

**ASX ANNOUNCEMENT**  
**13 NOVEMBER 2013**

## **DEEPER DRILLING SUCCESS AT GUCHAB**



Figure 1 - Diamond drilling underway near the peak of the Eisernenhut, Otavi Mountain Land, northern Namibia.

### **HIGHLIGHTS**

- **Drilling in the Guchab Canyon has intersected strong copper mineralisation at depth, below the levels of previous drilling,**
- **Recent Guchab drill results include:**
  - GCDD0045     21.86 metres @ 2.22% Copper & 44.59 gpt Silver from 183.00 metres
  - GCDD0046     26.40 metres @ 2.44% Copper & 43.61 gpt Silver from 95.60 metres
  - Including     10.50 metres @ 3.58% Copper & 67.46 gpt Silver from 111.50 metres
- **Drill results indicate that grade is increasing with depth, in line with Sabre modelling,**
- **Drilling at the Guchab Canyon deposit is targeted toward the estimation of a maiden JORC resource.**

## 1. Deeper Drilling at Guchab

The drilling program in the Guchab Canyon continues, with recent results confirming the continuity of mineralisation at depth, as well as an increase in the grade of the copper mineralisation.

### 1.1 Guchab Canyon – Deep Drilling

Sabre has continued to drill from a number of locations in the Guchab Canyon (Figure 3) in order to define the continuity and orientation of the copper mineralisation.

Recent results have included:

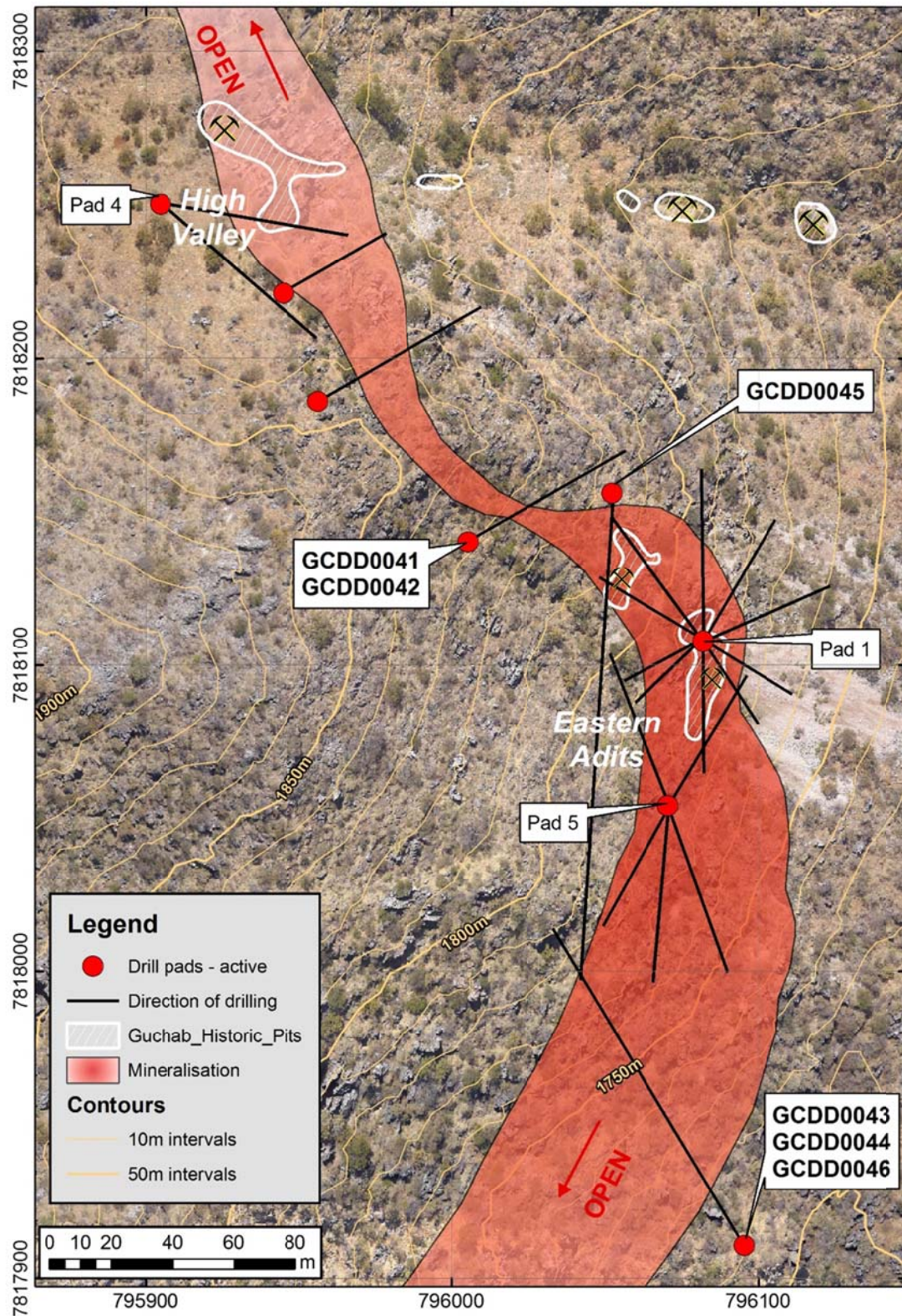
GCDD0045	6.81 metres @ 1.50% Copper & 1.47 gpt Silver from 25.00 metres
<i>and</i>	4.70 metres @ 0.87% Copper & 1.99 gpt Silver from 114.30 metres
<i>and</i>	21.86 metres @ 2.22% Copper & 44.59 gpt Silver from 183.00 metres
GCDD0046	26.40 metres @ 2.44% Copper & 43.61 gpt Silver from 95.60 metres
<i>including</i>	10.50 metres @ 3.58% Copper & 67.46 gpt Silver from 111.50 metres

These results show the copper-silver mineralisation in the Guchab Canyon extending to depth and strengthening in grade, which is in line with Sabre’s modelling and observations of the related copper mineralisation in the Otavi Mountain Land (e.g. the Kombat & Tsumeb mines). These intercepts occur approximately 100 metres vertically below surface.

The geological and geochemical results received from recent drilling also indicate that the structures hosting mineralisation have changed in orientation and as such drill hole GCDD0043 did not intersect mineralisation and may require extension in order to reach the target. Drill hole GCDD0044 was abandoned due to poor ground conditions and the target will be drilled from another location.



Figure 2 - Sabre's XT600 drilling GCDD0043 in the Guchab Canyon



**Figure 3** –The Guchab Canyon deposit, showing the distribution of mineralisation projected to surface, drill locations, drill hole projections, and historic surface workings. Results confirm continuity of mineralisation between the Eastern Adits (Pad 1) and the High Valley (Pad 4), as well as showing the mineralisation as being open to both the north & south.

## 1.2 Drilling at the Eisernenhut

Sabre is undertaking a short program of reconnaissance drilling at the Eisernenhut prior to the commencement of the wet season. This program will test the outcropping mineralisation in a number of locations for a structural assessment of the prospect and allow for the planning of a more extensive program, if initial results prove positive.

A short program of five holes is being undertaken, with the drill rig returning to the Guchab Canyon following the completion of the drill holes.

The program was pushed forward due to the dangers involved in drilling in such a topographically high location during the electrical storms that occur throughout the wet season.



Figure 4 - Outcropping copper mineralisation on the Eisernenhut.

The Company looks forward to updating shareholders as drilling continues in the Otavi Mountain Land.

**Tim Putt**  
**Chief Executive Officer**  
**Sabre Resources Ltd**

**For further information regarding the Company's activities, please contact:**

Norman Grafton  
Company Secretary  
Phone (08) 9481 7833

Timothy Putt  
Chief Executive Officer  
Phone (08) 9481 7833

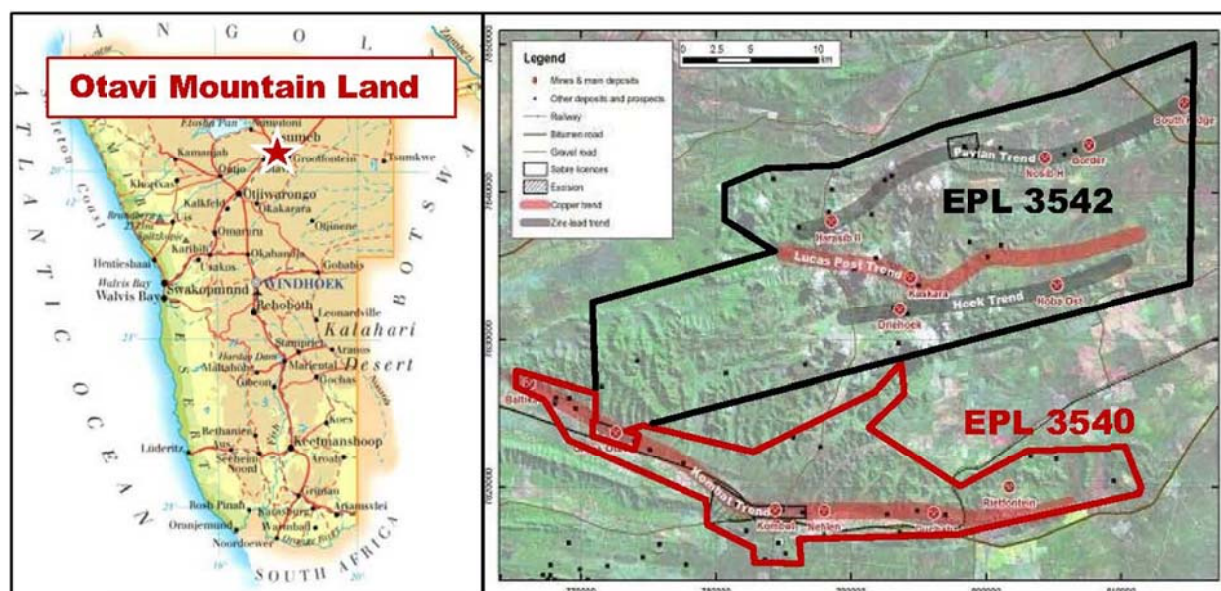
**Or consult our website:**

[www.sabresources.com](http://www.sabresources.com)

## SABRE'S OTAVI MOUNTAIN LAND COPPER PROJECT

The Otavi Mountain Land Copper Project ('OML') is located in northern Namibia, lying within the triangle created by the mining towns of Tsumeb, Otavi and Grootfontein.

The entire region is well served by sealed roads, rail to port, high voltage power, telephone and water, and is close to major towns and mining processing facilities, including the Kombat copper concentrator and Tsumeb Smelter complex (one of only five operating smelters in Africa).



Sabre's OML project consists of two Exclusive Prospecting Licences (EPL 3540 & 3542), which cover more than 800 km<sup>2</sup> of highly prospective base metal stratigraphy. Sabre has identified two key copper trends within its project area, each covering more than 25 km of strike, defined by surface geochemistry and historical workings. These extensive copper trends, namely the Lucas Post and Kombat Trends, are the present focus of exploration.

The region hosts a number of Copper, Zinc, Lead, Silver and Vanadium mines, including the **Tsumeb & Kombat Copper** mines. The Otavi Valley tenement (EPL 3540) surrounds the **Kombat Copper** mine on all sides and covers the strike extensions of the mine stratigraphy. To date, the Kombat Mine has produced over 8.7 Mt @ 3.1% Cu, 1.1% Pb and 26 gpt Ag, with owners, Kombat Copper (TSX-V), presently undertaking a drilling to define further NI 43-101 compliant resources within the mine area.

### Competent Person Declaration

The information in this report that relates to Exploration Results, Mineral Resources or Ore Reserves is based on information compiled by Mr T. Putt of Sabre Resources Ltd, who is a member of The Australian Institute of Geoscientists. Mr Putt has sufficient experience that is relevant to the style of mineralisation and type of deposit under consideration and to the activity that he is undertaking to qualify as a Competent Person as defined in the 2004 Edition of the "Australian Code for Reporting of Exploration Results, Mineral Resource and Ore Reserves". Mr Putt consents to the inclusion in the report of the matters based on his information in the form and context in which it appears.

### Forward-Looking Statements

This document may include forward-looking statements. Forward-looking statements include, but are not limited to, statements concerning Sabre Resources Ltd's planned exploration program and other statements that are not historical facts. When used in this document, the words such as "could," "plan," "estimate," "expect," "intend," "may", "potential," "should," and similar expressions are forward-looking statements. Although Sabre Resources Ltd believes that its expectations reflected in these forward-looking statements are reasonable, such statements involve risks and uncertainties and no assurance can be given that actual results will be consistent with these forward-looking statements.