



18 June 2013



**Re: Presentation at Australian Copper Conference – Brisbane 18 June 2013**

Attached is the presentation to be given to the Australian Copper Conference by Managing Director, Mr John Anderson on Tuesday 18 June 2013. The presentation features the silver and copper potential of the Company's tenements including:

- New Helen and Diomedes copper targets near Paris and
- Infill soil results for Wartaka South and Morgan South projects.

**For further information contact:**

Mr John Anderson  
Managing Director  
Investigator Resources Limited  
Phone: 07 3870 0357



# Investigator Resources Limited

ASX Code: **IVR**

## Investigator's Silver-Lining to the resurging Copper Kingdom

John Anderson, Managing Director

*Investor Presentation:*  
Australian Copper Conference  
Brisbane

18-19 June 2013

*Image: Drilling at Paris silver project, South Australia*





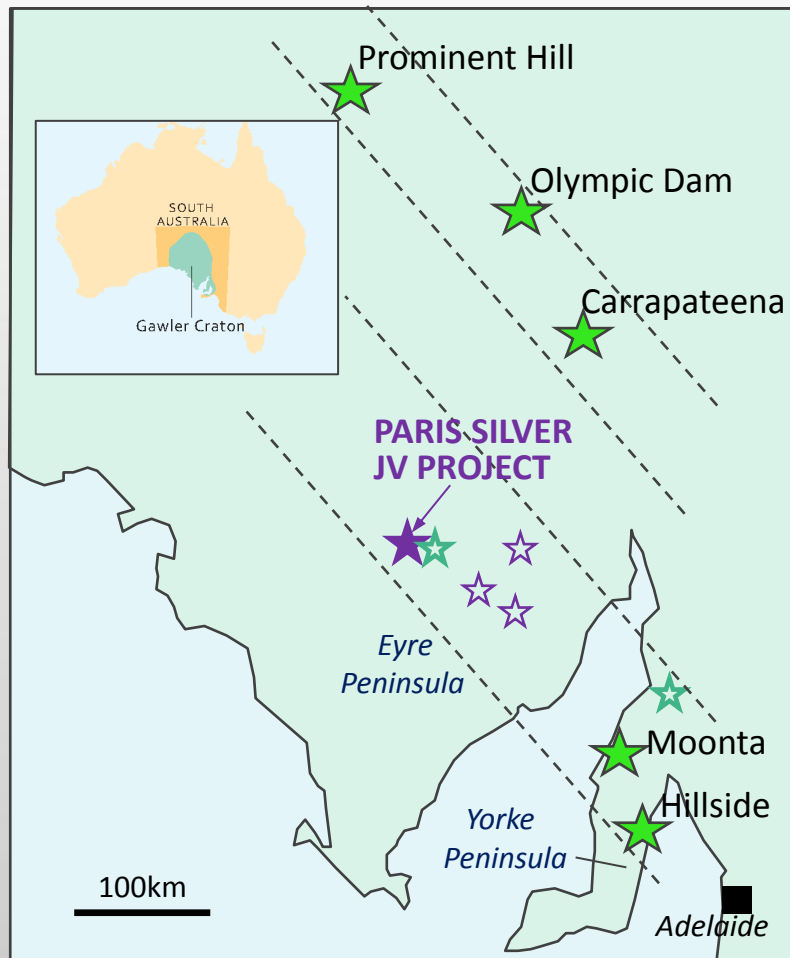
## Disclaimer

The information in this presentation is published to inform you about Investigator Resources Limited and its activities. Some statements in this presentation regarding estimates or future events are forward looking statements. They involve risk and uncertainties that could cause actual results to differ from estimated results. All reasonable effort has been made to provide accurate information, but we do not warrant or represent its accuracy and we reserve the right to make changes to it at any time without notice.

To the extent permitted by law, Investigator Resources Limited accepts no responsibility or liability for any losses or damages of any kind arising out of the use of any information contained in this presentation. Recipients should make their own enquiries in relation to any investment decisions.



# INVESTIGATOR RESOURCES – A leader in silver exploration within the resurging Gawler Craton copper province



★ Main copper deposits  
**Moonta historic field** discovered 1861  
(*The Copper Kingdom*)

**Iron oxide copper gold (+/-uranium)  
(modern large “IOCG”) deposits**

Olympic Dam discovered 1976

Prominent Hill “ 2001

Carrapateena “ 2005

Hillside “ 2008

*Next?*

★ IVR Paris silver discovery 2011  
in Peterlumbo field

★ Other potential IVR silver fields

★ Copper targets





# CORPORATE SUMMARY

**ASX-listed (IVR) in April 2007**

**Capital Structure** at 14<sup>th</sup> June 2013:

Total shares on issue 335,656,687

- CITIC Australia Pty Ltd 67,097,772  
(19.99% of total shares)
- Acorn Capital 16,893,865  
(5.03% of total shares)

Top 20 shareholders 43.32%

Total shareholders 3,772

**Capitalised** c. \$42m @ 12.5c per share  
(at 14<sup>th</sup> June 2013)

**Cash at bank** - \$12.5m (at 31<sup>st</sup> March 2013)

IVR.ASX@AUX: 0.125



*IVR share price during the Paris silver discovery.*

*Showing recent return to strength compared with silver peers & junior market.*



# STRATEGY for generating shareholder value

- Focussed on identification & development of potentially world class silver field in the Olympic Dam copper province of South Australia
- Discovery potential maximised through:-
  - Excellent board and technical team
  - Innovative Moonta Corridor concept
  - Proprietary regional soil geochemical dataset
  - Well funded
- Development of extensive high quality exploration portfolio through first-mover status with target flow
- Paris silver discovery - maiden resource soon; 4 other large silver targets; associated copper potential
- Multiple opportunities to monetize by:
  - development
  - sale
  - joint venture

# Eminent stable Board

**Roger Marshall OBE Non-Executive Chairman**  
*(former Deputy Chair - McArthur Coal)*

**Bruce Foy Non-Executive Director**  
*(former Managing Director - ING Bank NV Australia)*

**David Jones Non-Executive Director**  
*(former Chief Geologist - Newmont Australia)*

**John Anderson Managing Director**  
*(former GM Exploration Australia - MIM)*

**Company Secretary Garry Gill**

**Commercial Manager Alex Thin**

## Strong technical team

**Paris Project Manager Colin Skidmore**

**Senior Project Geologist Jason Murray**

**Senior Regional Geologist Richard Hill**

Plus three staff geologists, support staff & numerous consultants & contractors



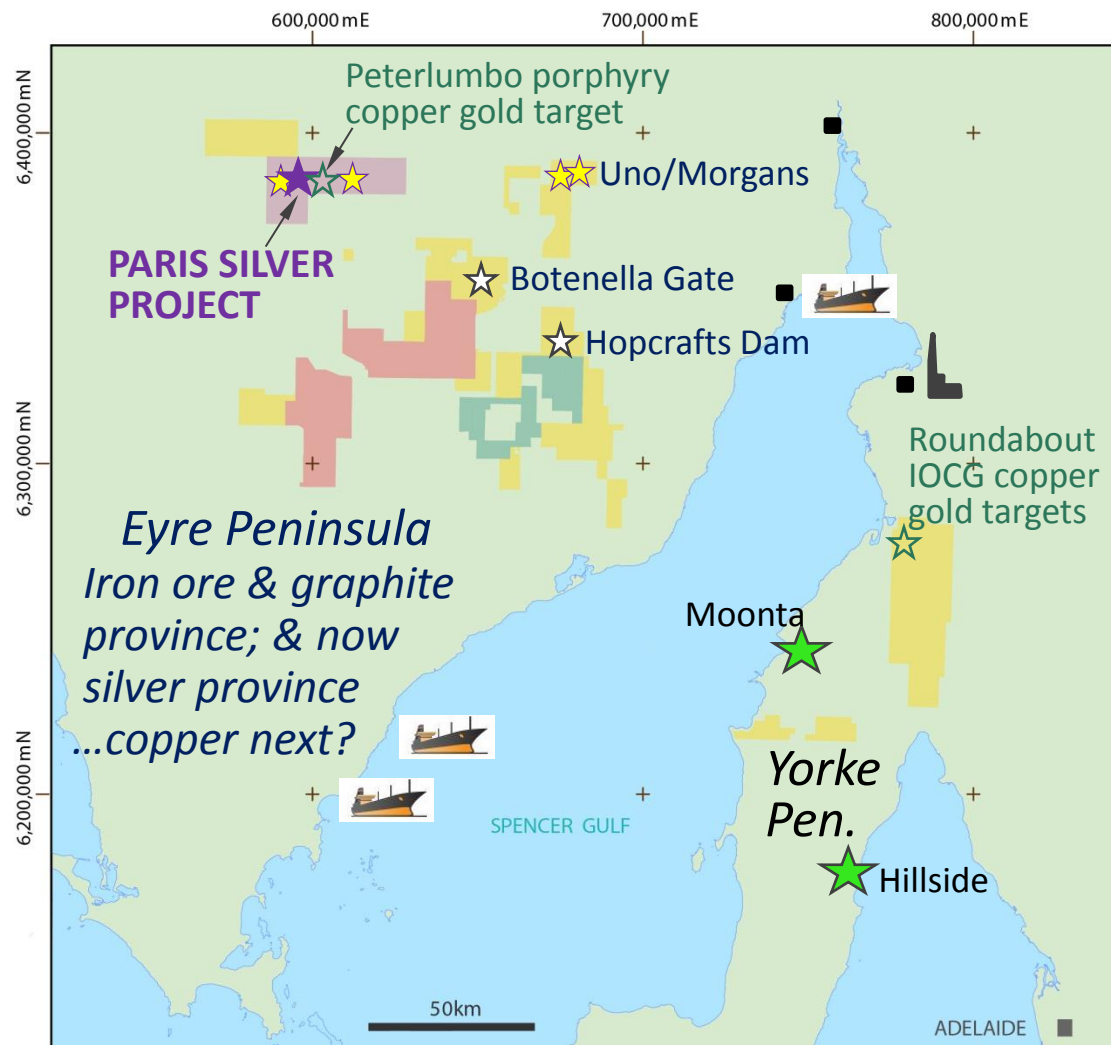
*Board at Paris*



*Paris camp*



# Dominant ground position IVR has secured about half the prospective area of a new silver province & developed a strong target portfolio



## Tenure Areas

- 100% IVR
- Peterlumbo JV (75% IVR)
- Yalanda Hill JV (60% IVR)
- Kimba JV (51% IVR)
- PARIS SILVER PROJECT
- Priority silver targets
- Other potential silver fields
- Copper targets

## Infrastructure

- Industrial city
- Proposed iron ore port
- Port Pirie custom smelter

**Paris silver project** is in a good location for development

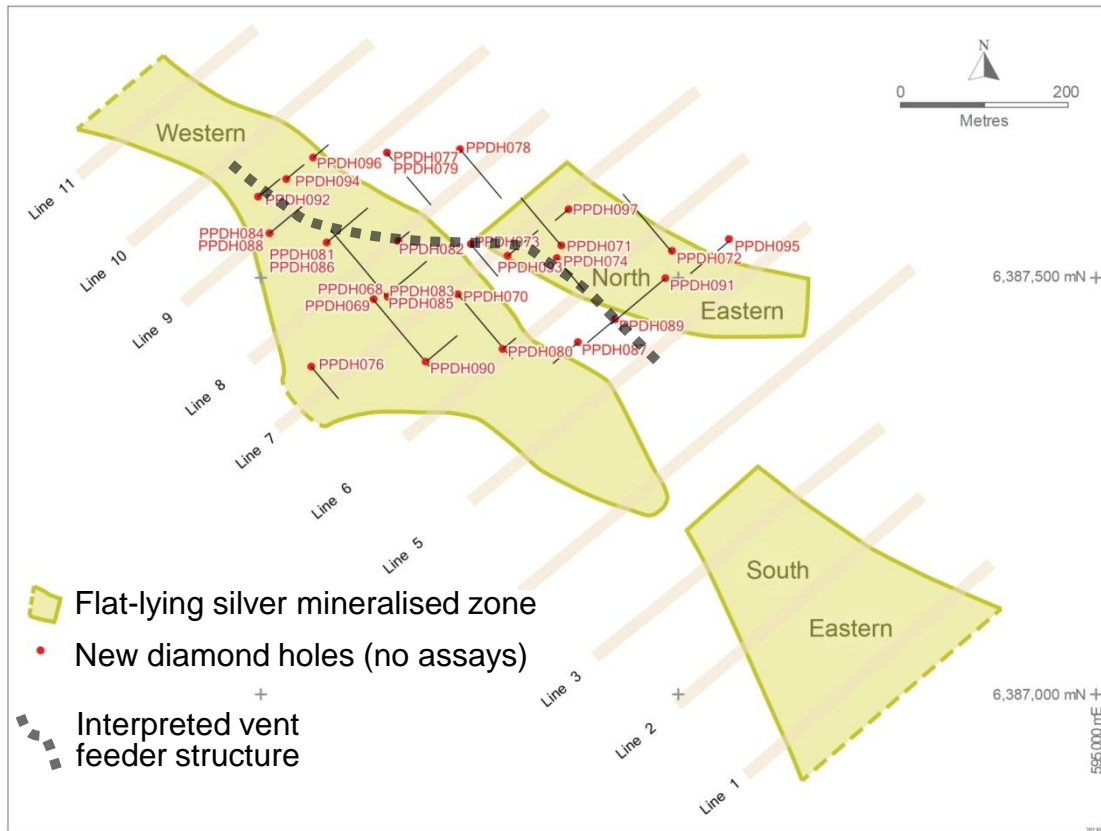


# PARIS SILVER PROSPECT PLAN

Large shallow silver system

Widespread high-grade silver intersections of substantial widths

Infill resource drilling in final stages



## Twenty best intersections [from downhole depth]

PPDH002	11.6m @ 3646g/t Ag	[63.5m]
PPRC003	22m @ 1318g/t Ag	[73m]
PPDH023	8.03m @ 3218g/t Ag	[165m]
PPDH038	12.1m @ 1766g/t Ag	[64m]
PPDH009	2m @ 9444g/t Ag	[46.1m]
PPDH039	15m @ 1209g/t Ag	[46m]
PPDH043	12.15m @ 1269g/t Ag	[45.4m]
PPDH025	14m @ 907g/t Ag	[97m]
PPDH026	7m @ 1810g/t Ag	[31m]
PPRC008	5m @ 2395g/t Ag	[101m]
PPDH065	7m @ 1570g/t Ag	[79m]
PPDH057	4.6m @ 1557g/t Ag	[45m]
PPDH009	5.5m @ 1062g/t Ag	[50.6m]
PPDH029	2m @ 852g/t Ag	[134m]
PPRC009	16m @ 331g/t Ag	[70m]
PPDH001	1.7m @ 2751g/t Ag	[140m]
PPDH042	2.8m @ 1643g/t Ag	[48.7m]
PPRC023	10m @ 432g/t Ag	[49m]
PLAC103	12m @ 344g/t Ag	[42m]
PLAC131	6m @ 691g/t Ag	[36m]

Nominal gold equivalence: Using gold:silver price ratio of 65:1 -

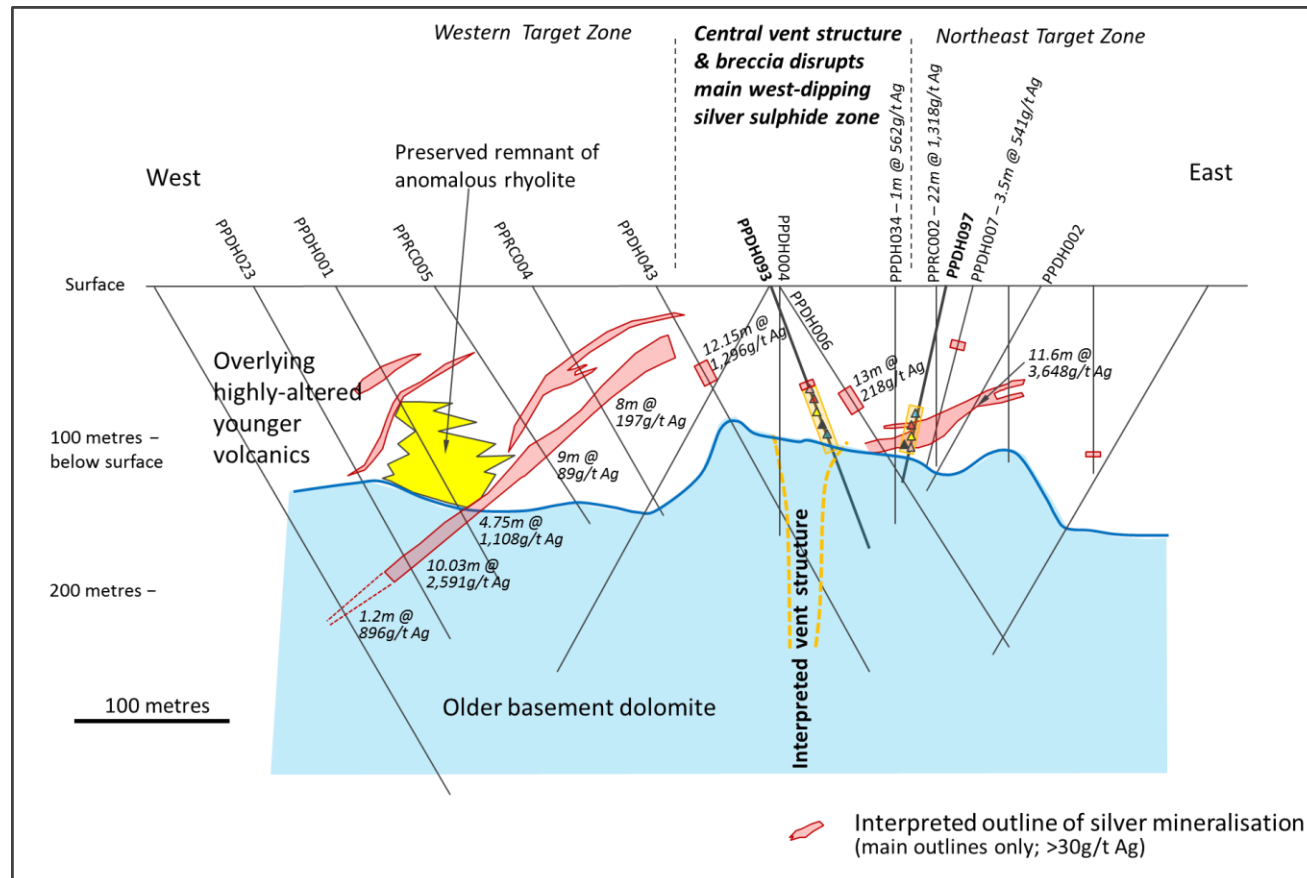
2,000g/t silver is equivalent to 30g/t gold

500g/t silver is equivalent to 7.7g/t gold

# PARIS SILVER PROSPECT – Line 7 Section

## Large shallow silver system

## Potentially open-pitabile with high grade zones



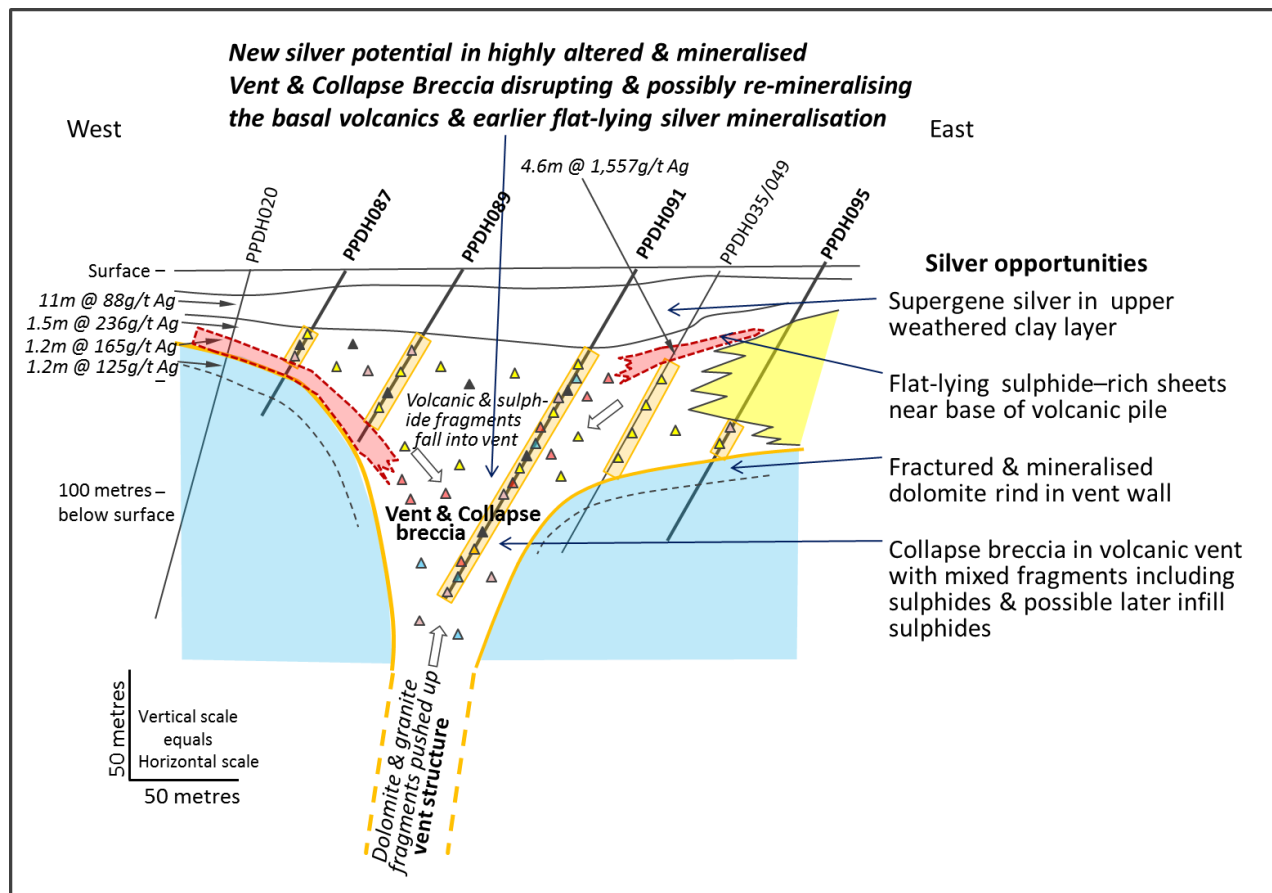
Hydrothermal mixed breccia incl. sulphide clasts

Mixed breccia incl. massive sulphide clast behind pencil PPDH097 – 78m



# PARIS SILVER PROSPECT – Line 5.5 interpretive section

## Additional shallow potential in newly recognised vent breccia



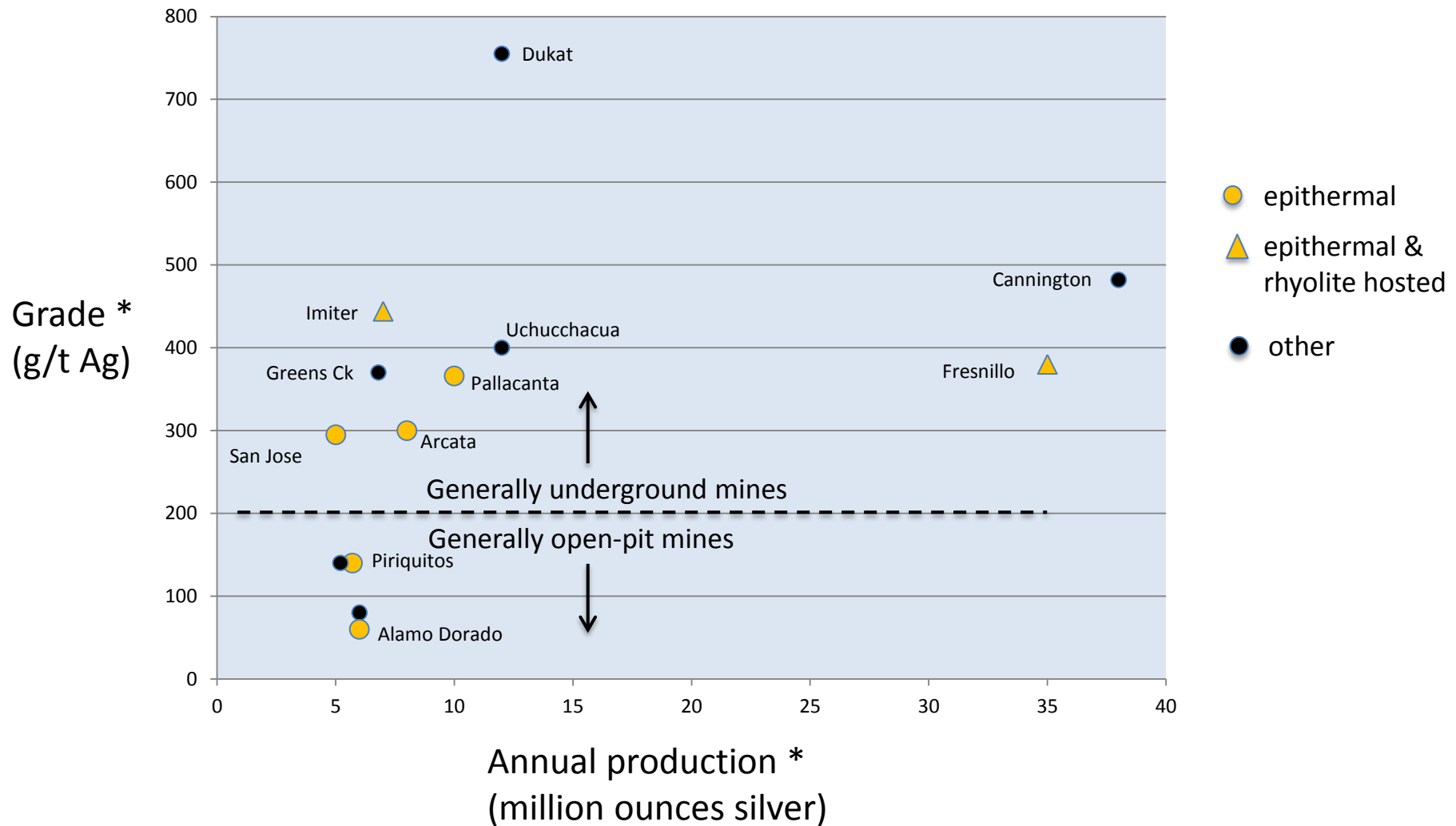
 Interpreted silver target zone

Massive sulphide clasts in altered breccia (PPDH091 – 82.4m)



# Global silver mines – size/grade comparison

shows Paris is potentially competitive as new shallow discovery

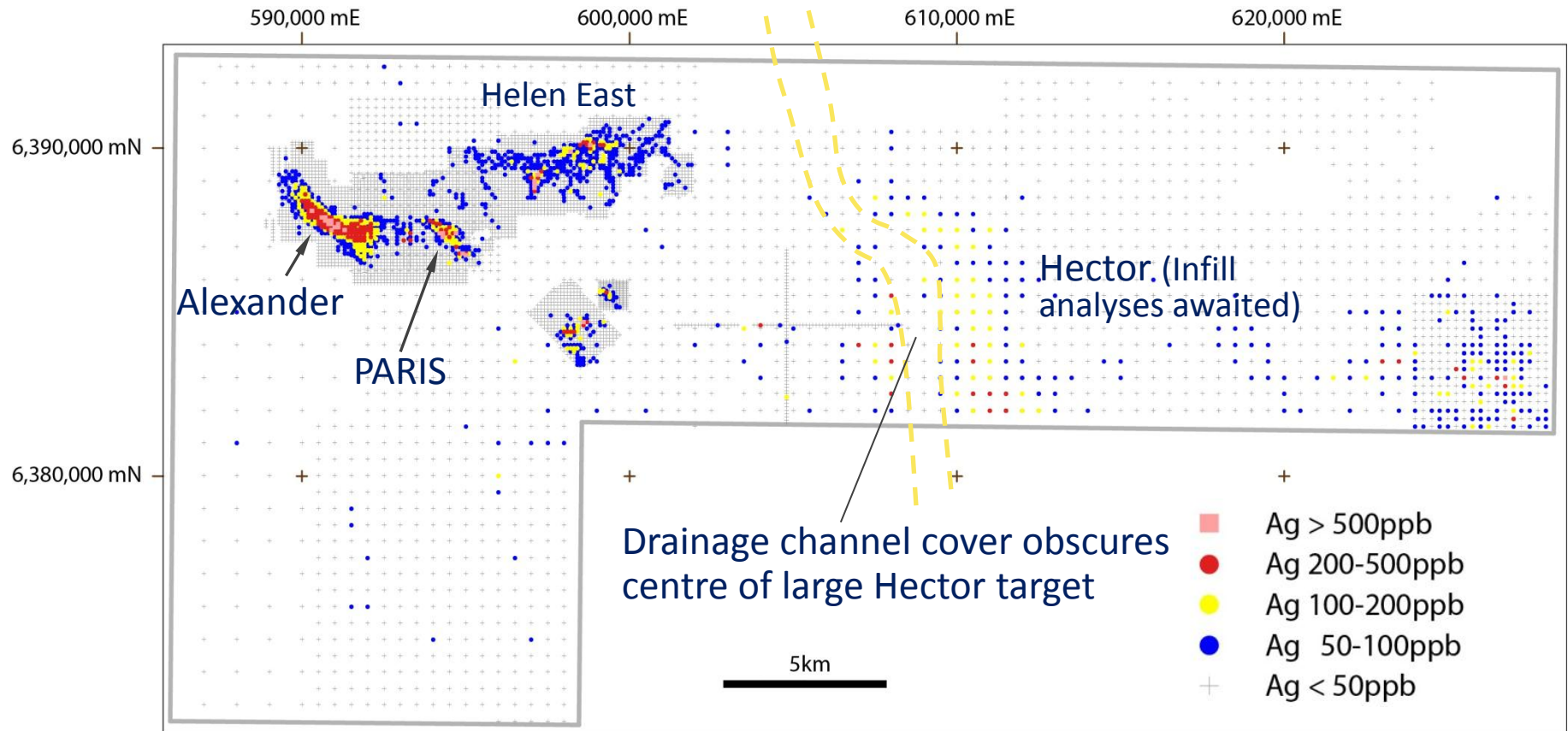


\* Note: Data is from various sources & is approximate; annual production is generally for 2010



# Peterlumbo Soil Geochemical Targets

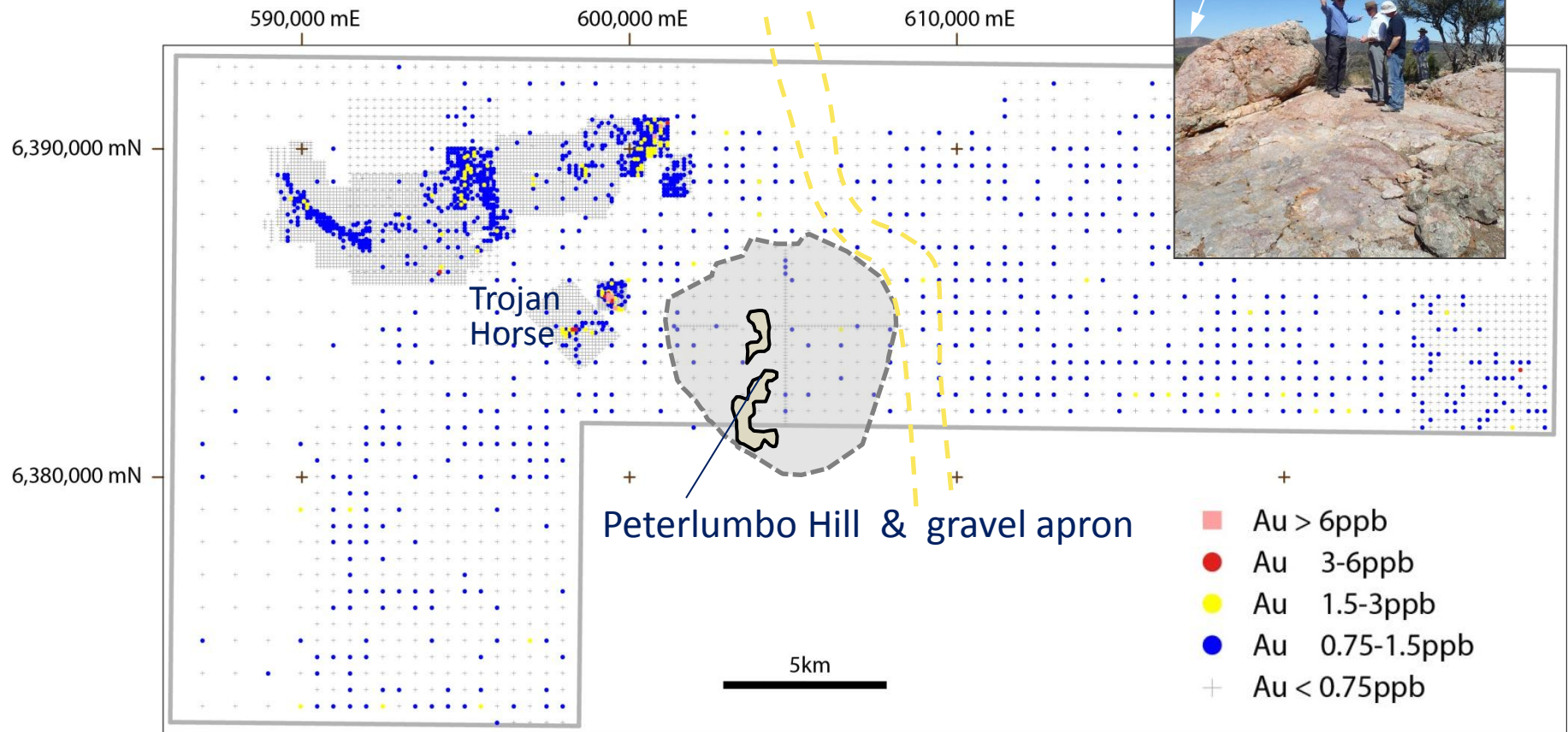
## SILVER



“Paris Plus” silver targets at Alexander & Hector  
look potentially even larger than Paris

# Peterlumbo Soil Geochemical Targets

## GOLD

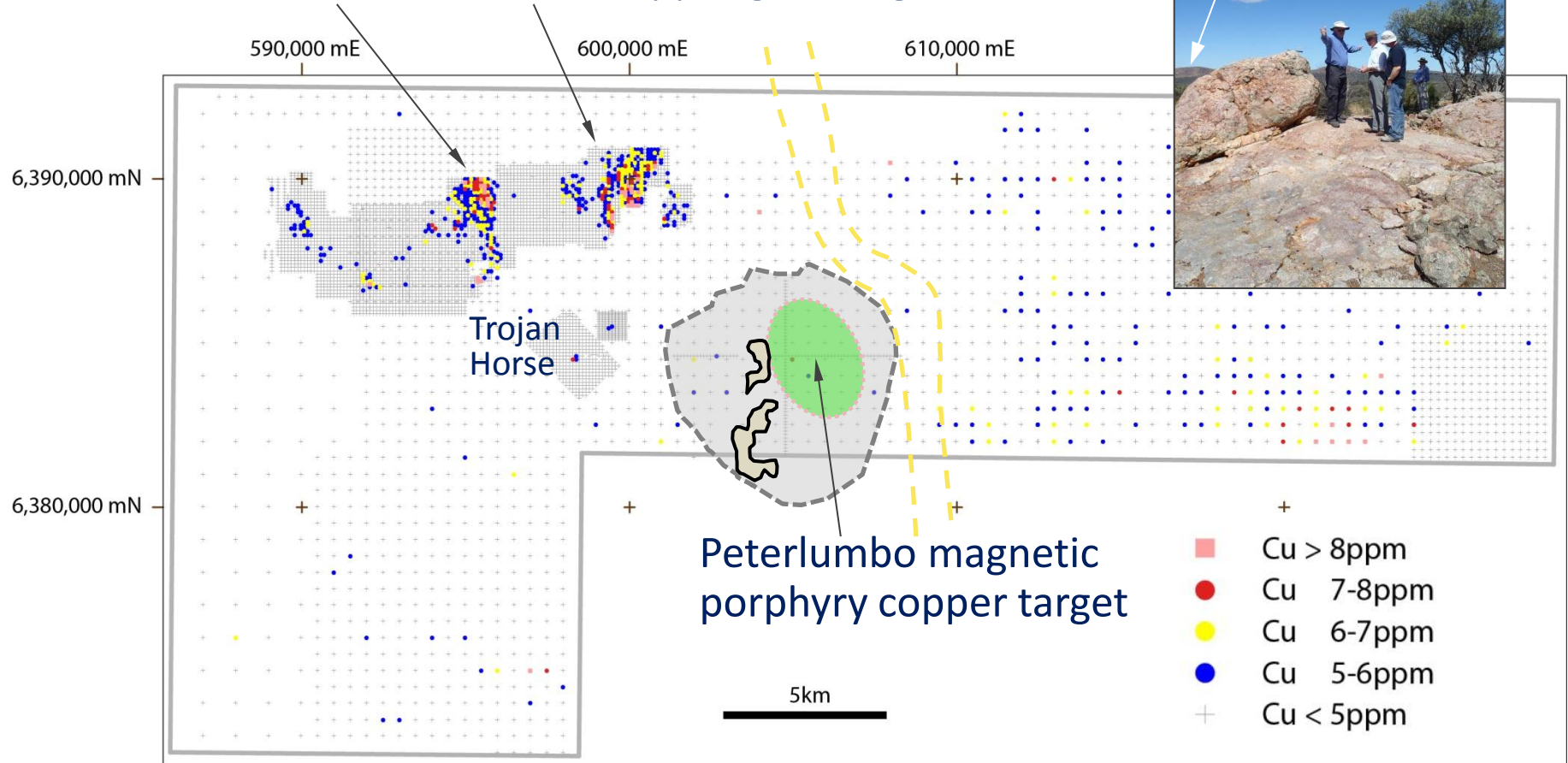


Gold-in-soil increase to east & Trojan Horse area  
*(rhyolite breccia & epithermal mineralisation)*  
 indicate potential for nearby porphyry systems

# Peterlumbo Soil Geochemical Targets

## COPPER

New Helen & Diomedes copper gold targets



Peterlumbo Hill & gravel apron obscures possible magnetic porphyry copper target at centre of Peterlumbo field



## PARIS/PETERLUMBO SILVER PROJECT - Timetable

Maiden Resource	September 2013
Drill Alexander & Hector	July - September 2013

*Reassess opportunity priorities*

*Subject to above, for Paris:-*

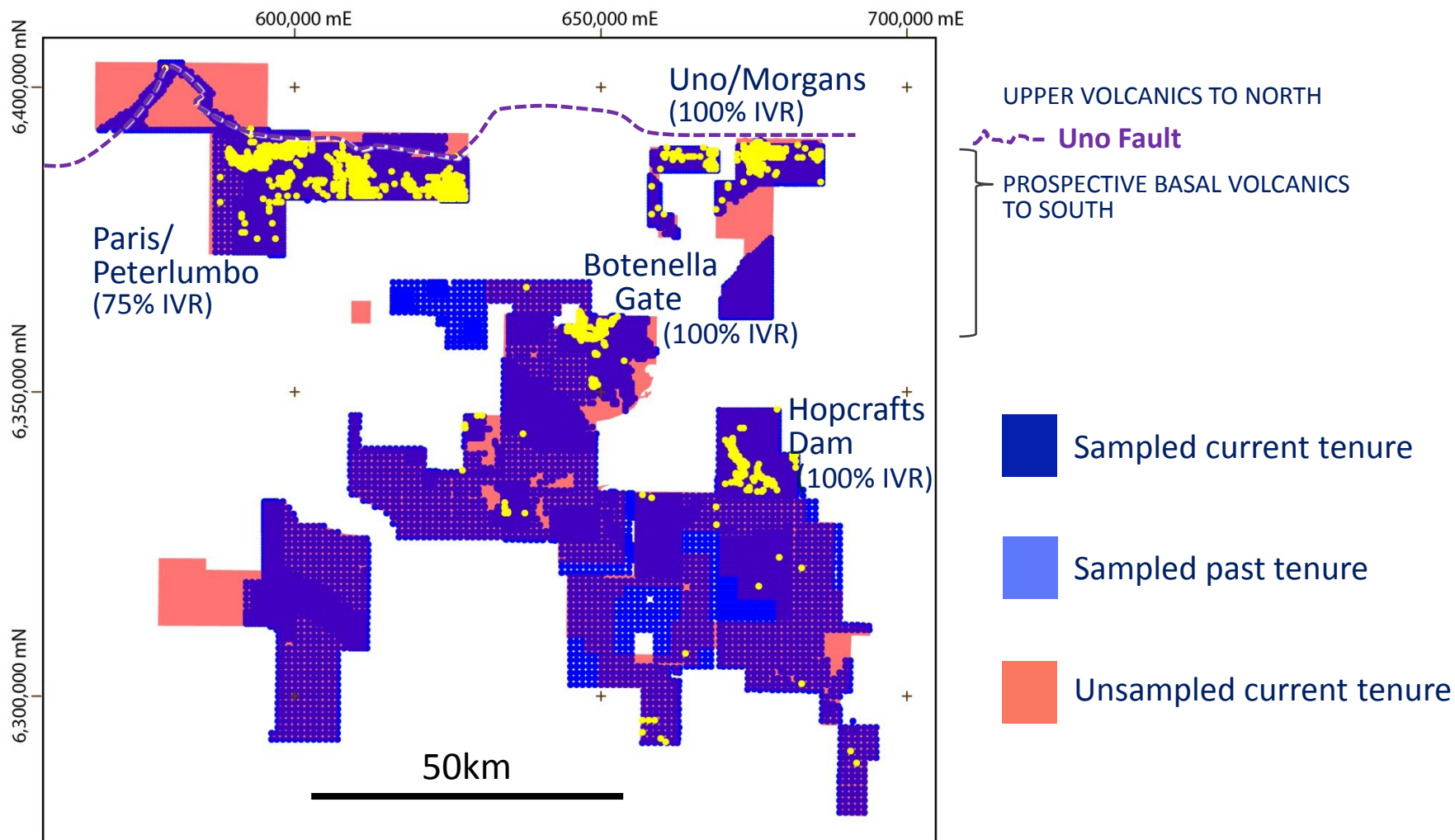
<u>Activity</u>	<u>Estimated completion</u>
Scoping Study	Early 2014
Metallurgical Studies	Mid 2014
Water Studies	Mid 2014
Feasibility Study	Late 2014

*(Timeframe subject to change)*



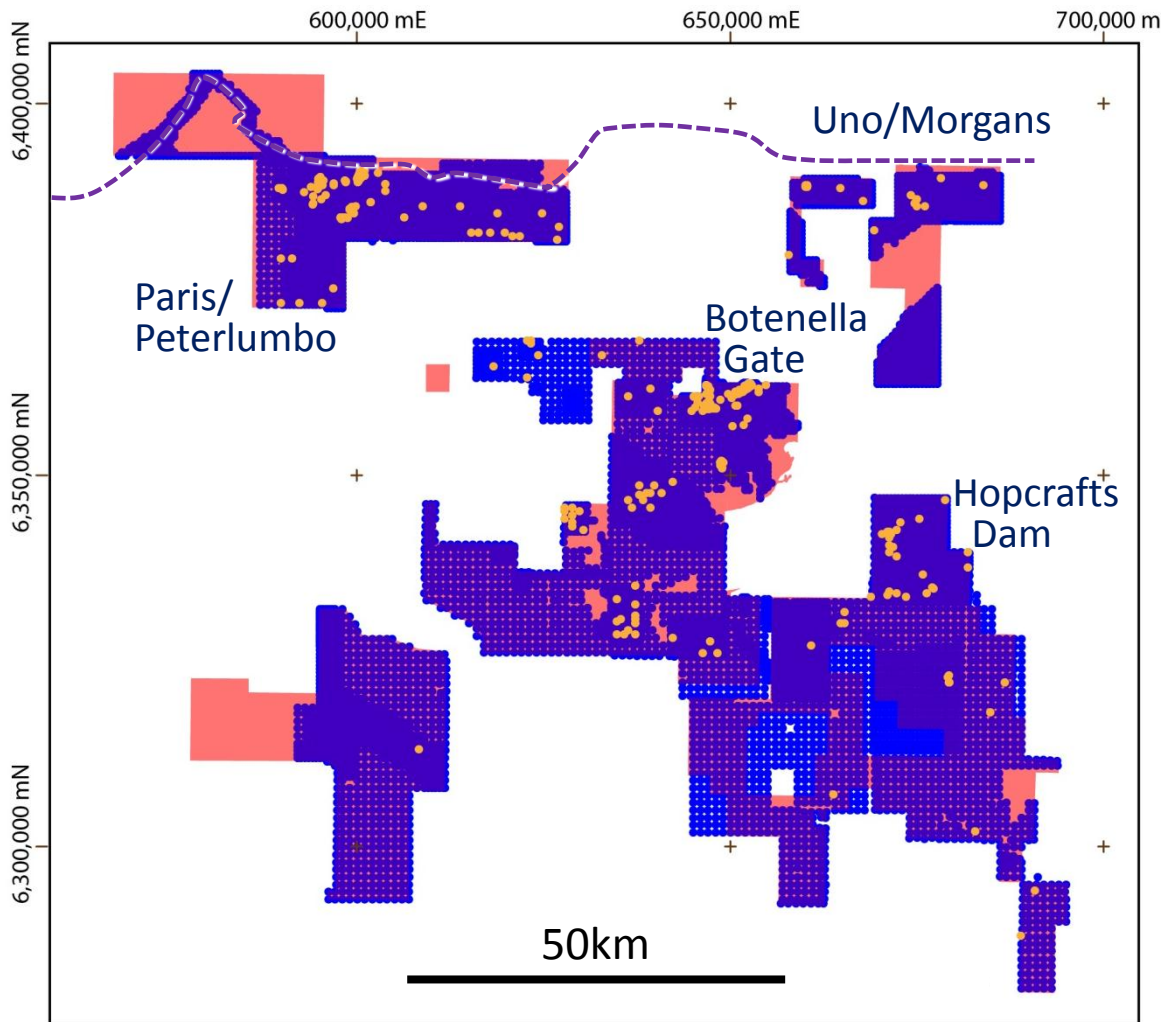
# Eyre Peninsula Soil Geochemistry reveals other possible new fields

**SILVER** Anomalous silver-in-soil • > 50ppb (parts per billion)



# Eyre Peninsula Soil Geochemistry Dataset

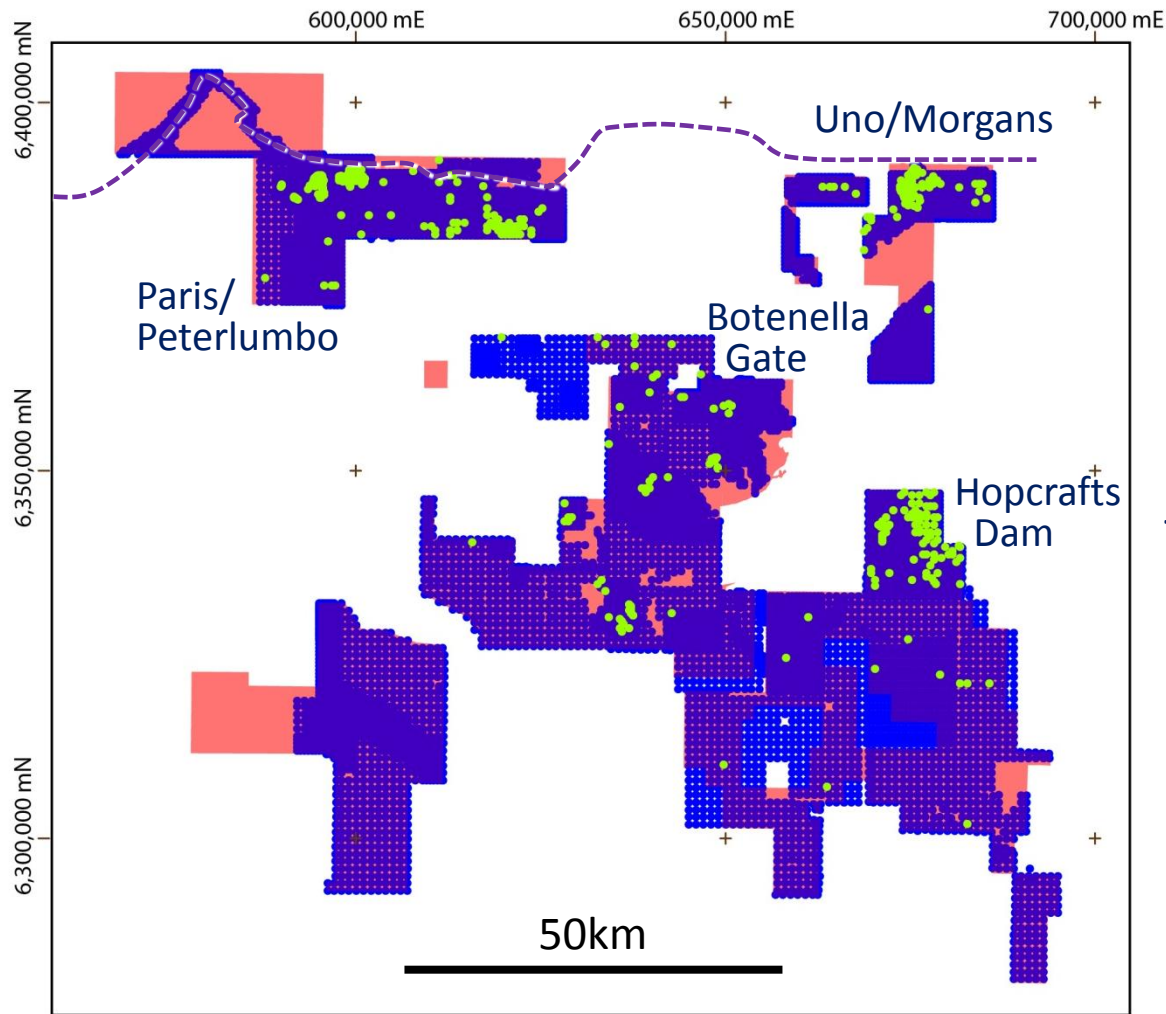
**GOLD** Anomalous gold-in-soil • > 1.5ppb (parts per billion)



Mostly coincident  
gold anomalies

# Eyre Peninsula Soil Geochemistry Dataset

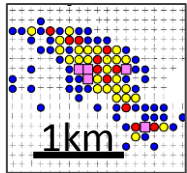
**COPPER** Anomalous copper-in-soil • > 6ppm (parts per million)



Botenella Gate & Hopcrafts Dam recently scout aircore Drilled (assays awaited)

Infill soil analyses received for Uno/Morgans

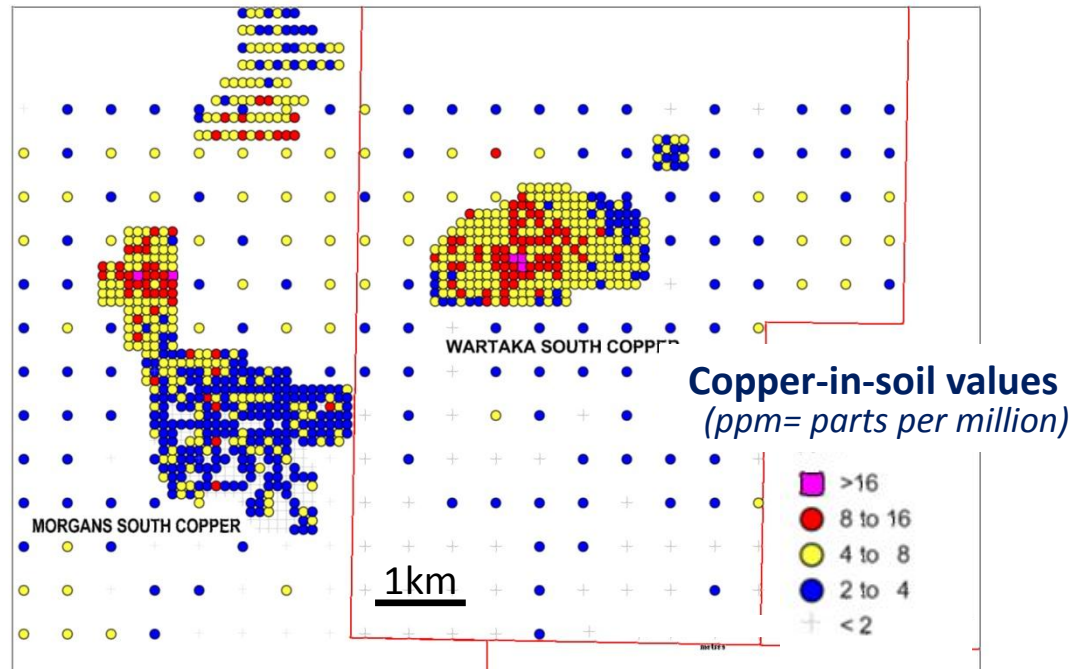
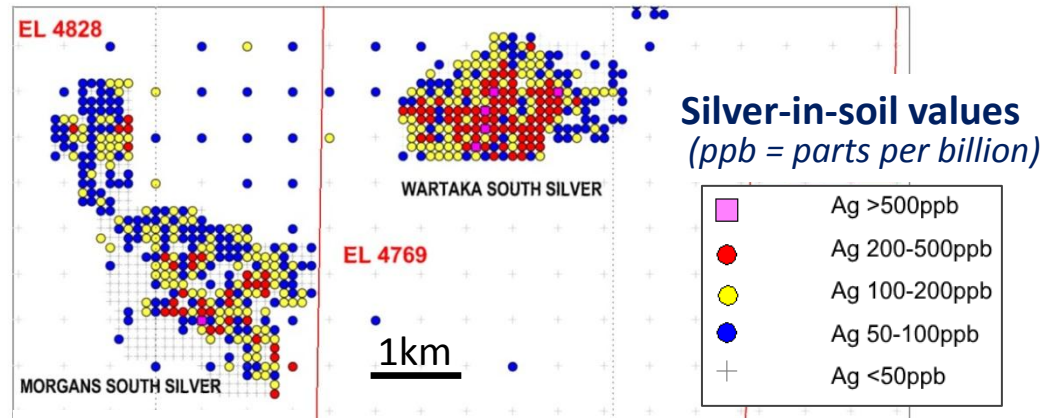
# “Paris Plus” silver targets in the Uno/Morgans area.....



Paris silver-in-soil target  
at same scale & stage  
of soil sampling



Epithermal silica outcrops & float  
in the Uno/Morgans area



....with associated copper targets



# Copper gold targets

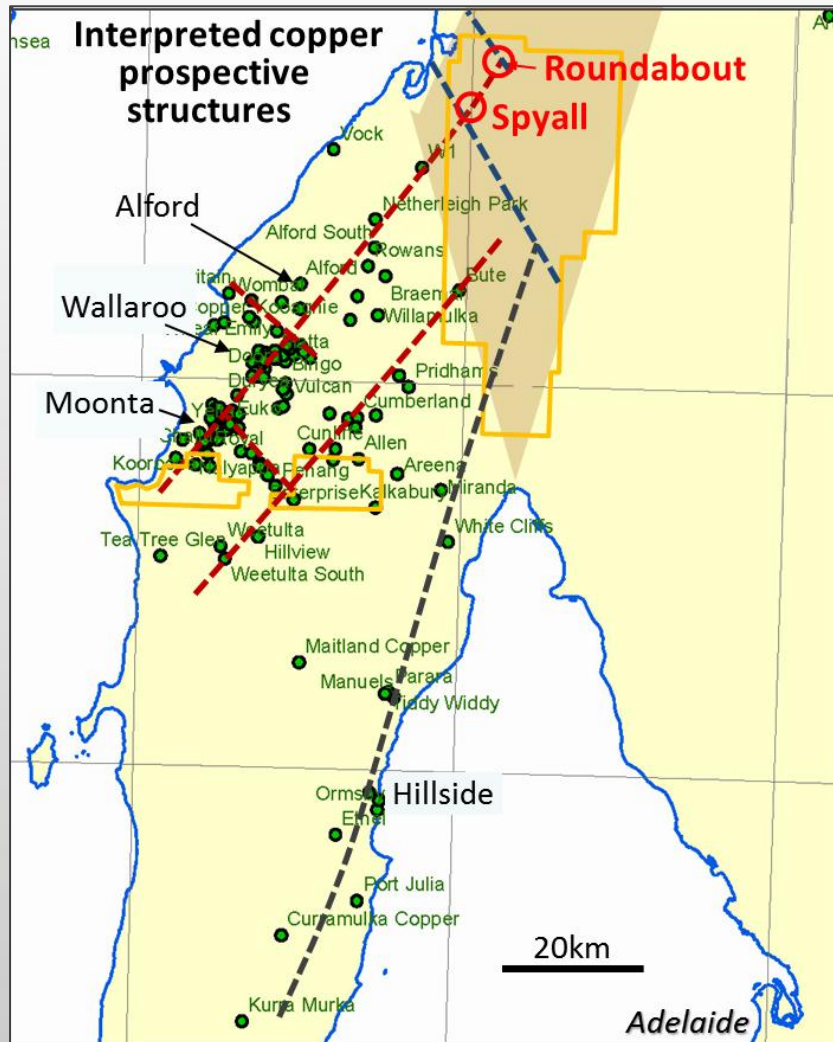
## Yorke Peninsula

100% IVR





# OPPORTUNITY FOR IOCG TARGETS under covered extensions to Moonta field & Hillside trend



Distribution of historic Moonta copper mines show Investigator's ground is highly prospective

Magnetic survey on western side of tenements in 2012 delineated two potential IOCG targets

Roundabout & Spyall anticipated to be only under 200m to 500m of cover

In prospective structural positions predicted by IVR's Moonta Corridor model

● Copper occurrence  
- historic mine, deposit  
or current prospect

IVR  
tenure

— Copper trend

— Hillside copper/  
magnetic trend

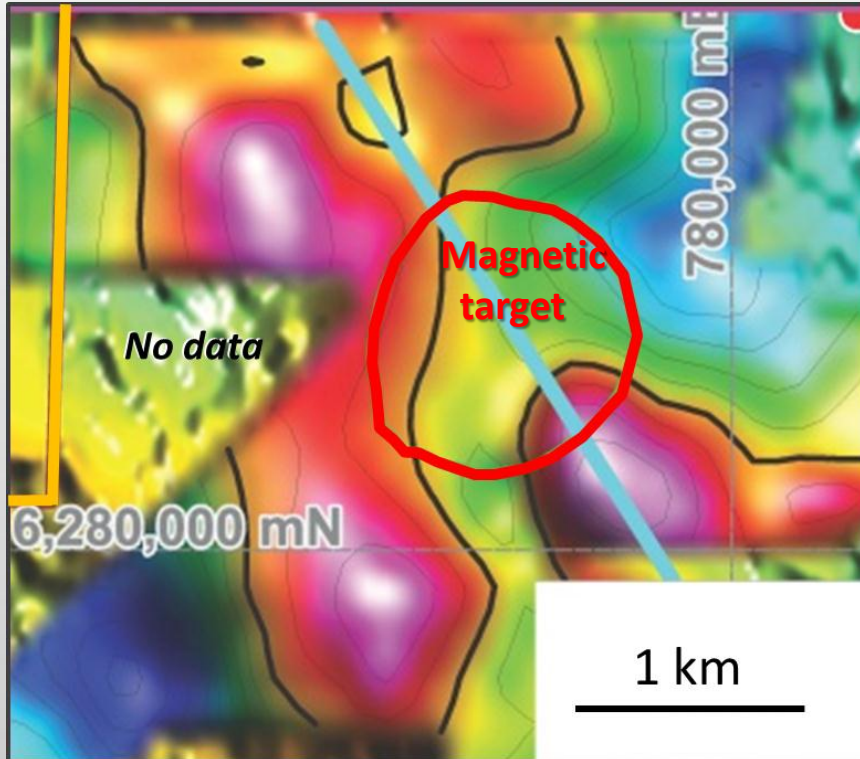
— Northwest  
structure

Prospective covered  
extensions

# RECENT GRAVITY SURVEY UPGRADES ROUNDABOUT IOCG TARGET

Large gravity targets delineated around magnetic target

- strong combination of geophysical signatures indicative of an IOCG system



Bouguer gravity image

Similar signatures resulted in the Prominent Hill & Carrapateena IOCG discoveries

Gravity anomalies are modelled to have a depth-to-top of about 200m from surface  
– reasonable drillable depths

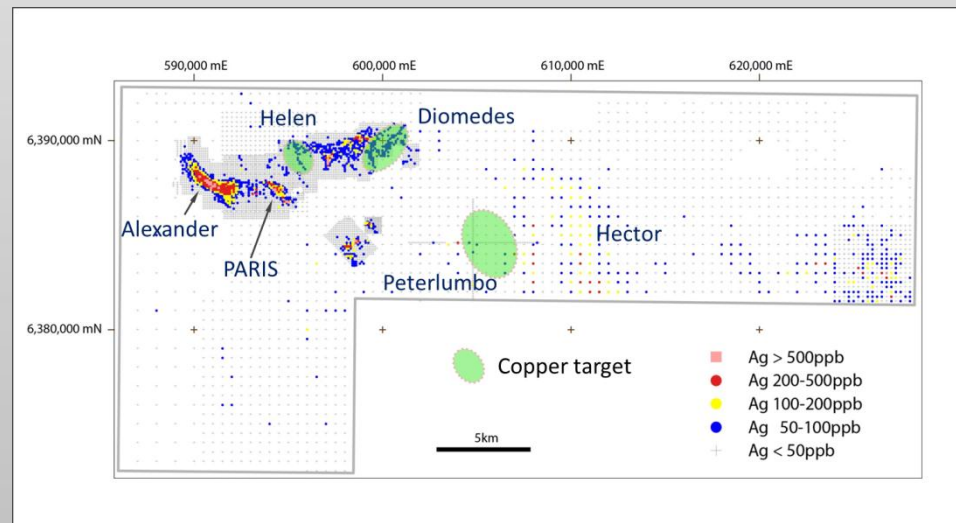
Roundabout to be drilled at earliest opportunity around farming activities  
– likely January 2014

# Investigator Resources Limited (ASX: IVR)

## INVESTMENT SUMMARY

- Highly experienced Board overseeing excellent technical team
- Outstanding land position in highly mineralised province
- Potentially discovered world-class silver fields
- Key results expected in September quarter
  - Maiden Paris resource
  - First drilling at “Paris Plus” Alexander & Hector silver targets
- Well funded with highly supportive strategic shareholders
- Regional exploration assets provide flexibility for growth & funding

Peterlumbo JV: main silver  
& copper targets





# INVESTIGATOR RESOURCES LIMITED



## Competent Person Statement

The information in this presentation that relates to Exploration Results and Mineral Resources is based on information compiled by John Anderson (BSc(Hons)Geol) who is a member of the Australasian Institute of Mining and Metallurgy and is bound by and follows the Institute's codes and recommended practices. Mr Anderson is a full-time employee of Investigator Resources Limited. He has sufficient experience which is relevant to the styles of mineralisation and types of deposits under consideration and to the activities being undertaken to qualify as a Competent Person as defined in the 2004 Edition of the "Australasian Code for Reporting of Exploration Results, Mineral Resources and Ore Reserves". Mr. Anderson consents to the inclusion in the report of the matters based on his information in the form and context in which it appears.

