



GAS TO POWER IN BOTSWANA



TLOU ENERGY

CORPORATE PRESENTATION MARCH 2017

DISCLAIMER

1

These presentation slides and the accompanying verbal presentation (together the "**Presentation Materials**") are confidential and have been issued in connection with the placing of new ordinary shares ("**Placing Shares**") in the capital of Tlou Energy Limited (the "**Company**") (the "**Transaction**").

These Presentation Materials do not constitute or form part of any invitation, offer for sale or subscription or any solicitation for any offer to buy or subscribe for any securities in the Company ("**Company Securities**") nor shall they or any part of them form the basis of or be relied upon in connection with, or act as any inducement to enter into, any contract or commitment with respect to Company Securities.

These Presentation Materials are for information purposes only and must not be used or relied upon for the purpose of making any investment decision or engaging in any investment activity. Whilst the information contained herein has been prepared in good faith, neither the Company, its subsidiaries (together with the Company, the "**Group**") nor any of the Group's directors, officers, employees, agents or advisers makes any representation or warranty in respect of the fairness, accuracy or completeness of the information or opinions contained in the Presentation Materials or otherwise in relation to the Group, its businesses or the Transaction, and responsibility and liability therefore (whether direct or indirect, express or implied, contractual, tortious, statutory or otherwise) is expressly disclaimed, provided that nothing herein is intended to limit the liability of any such person for fraud. No duty of care or advisory obligation is owed by any member of the Group or any of its directors, officers, employees, agents or advisers to any recipient of the Presentation Materials. No reliance may be placed for any purpose whatsoever on the information contained in the Presentation Materials or the completeness or accuracy of such information. The figures and projections included in the Presentation Materials are based on internal assumptions made by the directors and employees of the Company and have not been reviewed or verified as to their accuracy by any third party. The information contained in the Presentation Materials are provided as at the date of this presentation and are subject to updating, completion, revision, verification and further amendment without notice. However, the Company does not undertake or agree to any obligation to provide the recipient with access to any additional information or to update the Presentation Materials or to correct any inaccuracies in, or omissions from the Presentation Materials which may become apparent. The Presentation Materials should be read in conjunction with the Company's other periodic and continuous disclosure announcements lodged with the Australian Securities Exchange (ASX), which are available at www.asx.com.au.

The content of these Presentation Materials has not been approved by an authorised person within the meaning of the Financial Services and Markets Act 2000 ("**FSMA**"). Reliance on the Presentation Materials for the purpose of engaging in any investment activity may expose an individual to a significant risk of losing all of the property or other assets invested. Any person who is in any doubt about the subject matter to which this presentation relates should consult a person duly authorised for the purposes of FSMA who specialises in the acquisition of shares and other securities.

The Presentation Materials do not constitute an offer of transferable securities to the public for the purposes of section 85 FSMA. The Presentation Materials are exempt from the general restriction set out in section 21 FSMA on the communication of financial promotions on the grounds that they are directed only at: (i) persons whose ordinary activities involve them in acquiring, holding, managing and disposing of investments (as principal or agent) for the purposes of their business and who have professional experience in matters relating to investments or otherwise are "investment professionals" for the purposes of Article 19(5) of the Financial Services and Markets Act 2000 (Financial Promotion) Order 2005 (the "Order"); (ii) are persons who fall within Article 49(2)(a) to (d) of the Order; or (iii) otherwise fall within an applicable exemption within the Order (all such persons together being referred to as "**Relevant Persons**"). Persons of any other description, including those that do not have professional experience in matters relating to investment, should not rely or act upon the Presentation Materials. Any investment, investment activity or controlled activity to which the Presentation Materials may ultimately relate is available only to Relevant Persons and will be engaged in only with such Relevant Persons. The Presentation Materials are being distributed for and are only directed at Relevant Persons within the UK. Any person who is not a Relevant Person within the UK should not act or rely on the Presentation Materials.

The Presentation Materials do not constitute an offer of securities for sale in the United States, Australia, Japan or the Republic of South Africa or in any other country outside the United Kingdom where such distribution may lead to a breach of any legal or regulatory requirement, nor may they be distributed to persons with addresses in the United States, Australia, Japan or the Republic of South Africa, or to any national or resident of the United States, Australia, Japan or the Republic of South Africa, or to any corporation, partnership, or other entity created or authorised under the laws thereof. Any such distribution could result in a violation of American, Australian, Japanese or South African law. It is the responsibility of each recipient outside the United Kingdom to ensure compliance with the laws of and regulations of any relevant jurisdiction. The Company Securities have not been and will not be registered under the United States Securities Act of 1933, as amended (the "**Securities Act**"), or the securities laws of any state or other jurisdiction of the United States and may not be offered and sold in the United States except pursuant to an exemption from, or in a transaction not subject to, the registration requirements of the Securities Act. There will be no public offering of Company Securities in the United States.

No recipient of these Presentation Materials should deal in or attempt to deal in or otherwise engage in any behaviour in relation to financial instruments (as defined in the Market Abuse Regulation ("**MAR**")), which would or might amount to "market abuse" for the purposes of MAR, based on the information in these Presentation Materials (and any related materials) until after the information has been made generally available. Nor should the recipient use the information in these Presentation Materials (and any related materials) in any way which would constitute market abuse. These Presentation Materials contain information which is, or may be, inside information in relation to the Company's listed securities. Accordingly, any person who receives these Presentation Materials must not deal in the Company's securities or encourage anyone else to do so and must not disclose these Presentation Materials to any other person until such time as the information ceases to be inside information. A breach of UK insider dealing rules may be a criminal offence and/or may constitute market abuse and these Presentation Materials are given on the basis that all recipients understand their legal and regulatory obligations with respect to inside information under both MAR and Part V of the Criminal Justice Act 1993.

Past performance information given in these Presentation Materials is given for illustrative purposes only and should not be relied upon as (and is not) an indication of future performance.

These Presentation Materials contain forward-looking statements, including in relation to the Company, the Group, the Transaction and the Group's proposed strategy, plans and objectives. Such statements are generally identifiable by the terminology used, such as "may", "will", "could", "should", "would", "anticipate", "believe", "intend", "expect", "plan", "estimate", "budget", "outlook" or other similar wording. Indications of, and guidance on, future earnings and financial position and performance are also forward-looking statements. By its very nature, such forward-looking information requires the Company to make assumptions that may not materialise or that may not be accurate. Such forward-looking statements involve known and unknown risks, uncertainties and other important factors beyond the control of the Company that could cause the actual performance or achievements of the Company to be materially different from any future results, projections, guidance on future earnings and estimates, performance or achievements expressed or implied by such forward-looking statements and such statements should not be relied upon as an indication or guarantee of future performance. It is believed that the expectations reflected in these statements are reasonable, but they may be affected by a range of variables which could cause actual results or trends to differ materially, including but not limited to: price fluctuations, actual demand, currency fluctuations, drilling and production results, reserve estimates, loss of market, industry competition, environmental risks, physical risks, legislative, fiscal and regulatory developments, economic and financial market conditions in various countries and regions, political risks, project delay or advancement, approvals and cost estimates, and other factors, many of which are beyond the control of the Company. Furthermore, the forward-looking information contained in the Presentation Materials is made as of the date of the Presentation Materials and the Company accepts no obligation to disseminate any updates or revisions to such forward-looking statements. The forward-looking information contained in the Presentation Materials is expressly qualified by this cautionary statement.

DISCLAIMER

2

Investors are advised that by their nature as visual aids, presentations provide information in a summary form. The key information on detailed resource statements can be found in the Company's ASX and AIM press releases. Resource statements are provided to comply with ASX guidelines but investors are urged to read supporting information in full on the Company's website.

The gas reserves and resource estimate for the Lesedi CBM Project provided in this presentation (slide 8) were released to the market on 12 October 2016 (Announcement) and 15 February 2017 (Reserves Upgrade Announcement). Tlou confirms that it is not aware of any new information or data that materially affects the information included in the Announcement and/or the Reserves Upgrade Announcement and that all material assumptions and technical parameters underpinning the estimates in the Announcement and the Reserves Upgrade Announcement continue to apply and have not materially changed. The gas reserve and resource estimates are based on and fairly represents, information and supporting documentation and were determined by Dr. Bruce Alan McConachie of SRK Consulting (Australasia) Pty Ltd, in accordance with Petroleum Resource Management System guidelines. Dr. McConachie is considered to be a qualified person as defined under the ASX Listing Rule 5.42 and has given his consent to the use of the resource figures in the form and context in which they appear in this Presentation.

Shore Capital Stockbrokers Limited ("Shore Capital") and Optiva Securities Limited ("Optiva"), which authorised and regulated by the Financial Conduct Authority, are advising and acting only for the Company and no one else in connection with the Transaction and is not acting for or advising any other person, or treating any other person as its client, in relation thereto and will not be responsible for providing the regulatory protection afforded to clients of Shore Capital or Optiva or advice to any person other than the Company in relation to the Transaction. Any other person attending this presentation should seek their own independent legal, investment and tax advice as they see fit.

WARNING: You are advised to exercise caution in relation to the Presentation Materials. If you are in any doubt about any of the contents of this Presentation, you should obtain independent professional advice.

An investment in the Company's shares is subject to investment and other known and unknown risks, some of which are beyond the control of the Company. The Company does not guarantee any particular rate of return or the performance of the Company. Persons should have regard to the risks outlined in this Presentation.



BOARD OF DIRECTORS

3

Led by an experienced team including a pioneer of CBM in Queensland

Martin McIver
Chairman

- Over 17 years experience in finance and mining services
- Formerly with PwC
- Current General Manager – Mergers and Acquisitions of the WorkPac group

Anthony (Tony) Gilby
MD & CEO

- Geologist with over 30 years industry experience
- Co-founder of a number of successful CBM companies in Queensland
- Previous technical roles for ESSO & Exxon
- Led takeover of Sunshine Gas by QGC (BG) in 2008 for A\$1.1bn

Colm Cloonan
Finance Director

- Accountant (FCCA) with over 17 years experience
- Worked in various industries including power generation in Australia
- In-depth company knowledge having served in various roles, including CFO, since 2009

Gabaake Gabaake
Executive Director

- Geologist and former Botswana Permanent Secretary, Minerals Energy & Water
- Very strong government and industry relationships in Botswana
- Former director of international resource companies including Debswana, De Beers and DTC

KEY MANAGEMENT AND CONSULTANTS

4

Experienced management team and consultants to drive the project

Danny Horne
Chief Operating Officer

- 28 years in the drilling industry including 16 years in the Oil & Gas/CBM Sector
- Qualified in Diesel Engineering
- Diploma of Drilling (Onshore Oil & Gas)

Remigiyo Mavata
Chief Geologist

- Geologist with over 20 years experience with African based projects
- Experience in multidisciplinary exploration in conventional and unconventional reservoirs
- Batchelor of Science in Geology from the University of Zimbabwe

Phil Hicks
Commercial Manager

- 20 years experience in advising companies on financial matters, corporate strategy and managing corporate finance transactions including M&A and equity capital markets
- Former Head of Corporate Finance at Wilson HTM Corporate Finance
- Has undertaken a significant number of transactions in the coal seam gas, coal and mining services sectors

Solomon Rowland
**Company Secretary
& Legal Counsel**

- Over 16 years experience in various private, government and in-house legal roles
- Involved in advising government departments on commercial, corporate governance and policy matters
- Holds a Juris Doctor from the University of Queensland

Thlou aims to deliver a gas-to-power solution to a market with a chronic energy shortfall

- **Coalbed Methane (CBM) Gas-to-power development in Botswana and Southern Africa**
- **Attractive market due to the chronic energy shortage locally & regionally**
- **High potential power price, CBM would replace existing expensive imported power and diesel generation**
- **Independently Certified Gas Reserves in place**
- **Environmental Impact Statement approved for gas field development**
- **Request for proposal tender for up to 100 MW CBM power project received from Government of Botswana**
- **Extensive licence* area – 8,300km²**
- **Currently flaring gas**
- **Experienced team**

* Three Prospecting Licences due to expire on 31 March 2017 have been extended for the statutory renewal term of two years. Renewal applications for five Prospecting Licences that expire on 30 June 2017 to be submitted to the relevant Botswana Government department by 31 March 2017.

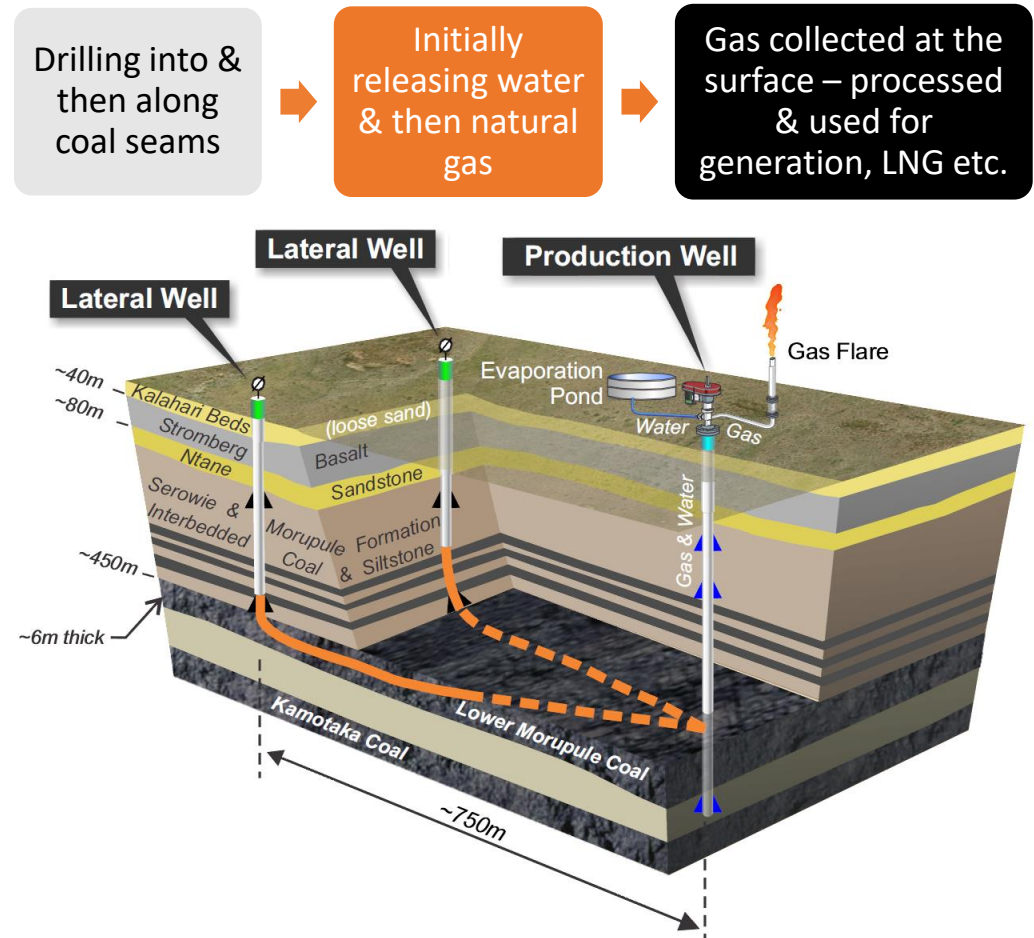


Coalbed Methane (CBM)

6

- Chemically identical to other sources of gas but is produced by non-conventional methods
- Extracted from coal seams rather than sandstone reservoirs
- Main component from natural gas is methane
- Typically found at depths of 400m – 1,000m enabling lower drilling costs per well in comparison to conventional gas wells
- Emerging markets, notably India & Africa are now looking to unlock the potential of CBM due to cost advantages & energy crisis

CBM Production Process



REGIONAL POWER DYNAMIC

7

As Botswana's reliance on non-firm imports and on-going diesel generation increases, the support for domestic sources of energy is strong

- Botswana's demand predicted to increase 31% to 1,017MW by 2025
- Current demand not being met
- In 2015 the shortfall in South Africa alone was **5,994MW**

Southern African Development Community - Supply and Demand						
Demand and Supply Balance with Current Peak Demand - 2015						
No. Country	Utility	Installed capacity (MW)	Operating Capacity (MW)	Current Peak Demand (MW)	Peak Demand Plus Reserves	Capacity excess/ shortfall including Reserves
Angola	ENE	2,210	1,772	1,599	1,829	(57)
Botswana	BPC	892	410	610	698	(288)
DRC	SNEL	2,442	1,066	1,317	1,507	(441)
Lesotho	LEC	74	70	150	172	(102)
Malawi	ESCOM	352	351	326	373	(22)
Mozambique	EDM/HCB/MOTRACO	2,724	2,279	1,780	2,036	243
Namibia	Nampower	501	354	629	720	(366)
South Africa	Eskom	46,963	36,000	36,711	41,994	(5,994)
Swaziland	SEC	70	55	227	260	(205)
Tanzania	TANESCO	1,380	823	935	1,070	(247)
Zambia	ZESCO/CEC/ LHPC	2,206	2,175	2,287	2,616	(441)
Zimbabwe	ZESA	2,045	1,555	1,589	1,818	(263)
TOTAL ALL		61,859	46,910	48,160	55,093	(8,183)
TOTAL Operating Members Only		57,917	43,964	45,300	51,821	(7,857)

Source: Data from 2015 from BPC presentation at the Botswana Resource Sector Conference 2016



TLOU ENERGY

www.tlouenergy.com

RESERVES AND RESOURCES

8

Independent Gas Reserves Certification⁽¹⁾

0.17
BCF
(1P)

3.9
BCF
(2P)

261.1
BCF
(3P)

Technical Fundamentals

Coal Depth	~260-764m
Gas Contents (Average)	4-6 m ³ /t (DAF)
Gas compositions	80-95% methane

Location	Project	Tlou Interest	Gas Reserves ⁽¹⁾			Gas Contingent Resources ⁽²⁾			Gas Prospective Resource (BCF) ³
			1P (BCF)	2P (BCF)	3P (BCF)	1C (BCF)	2C (BCF)	3C (BCF)	
Karoo Basin Botswana	Lesedi CBM (Lower Morupule coal) (PL002/2004)	100%	0.15	3.5	117	4.3	67.4	470	-
Karoo Basin Botswana	Lesedi CBM (all coal seams) (PL001/2004, PL002/2004) ⁴	100%	0.15	3.5	117	4.3	235	3,183	-
Karoo Basin Botswana	Mamba CBM (Lower Morupule coal) (PL238/2014, PL240/2014)	100%	0.02	0.4	144	n/a	n/a	n/a	-
Karoo Basin Botswana	PL003/2004, PL035/2000, PL037/2000	100%	-	-	-	-	-	-	8,596 ⁶

Notes:

Gas Resource numbers have been rounded to the nearest tenth for amounts less than 100 BCF, otherwise to the nearest whole number. Refer to Competent Persons Statement in the disclaimer slide of this presentation.

1) Tlou's Gas Reserves have not been adjusted for fuel or shrinkage and have been calculated at the wellhead (which is the reference point for the purposes of ASX Listing Rule 5.26.5).

2) Contingent Gas Resources are (100%) Unrisked Gross and are derived from the SRK certification at 31 March 2015 for all coal seams (as previously announced by Tlou on 9 April 2015) with adjustment for the gas volumes which have now been certified by SRK in the Gas Reserves category.

3) ASX Listing Rule 5.28.2 Statement relating to Prospective Resources:

The estimated quantities of petroleum gas that may potentially be recovered by the application of a future development project(s) relate to undiscovered accumulations. These estimates have both an associated risk of discovery and a risk of development. Further exploration appraisal and evaluation is required to determine the existence of a significant quantity of potentially moveable hydrocarbons.

4) The Gas Reserves and Contingent Gas Resources for all coal seams in PL001/2004 and PL002/2004 shown in the second row of the table above includes the numbers for the Lower Morupule coal seam which are shown in the first row of the table above

5) The most recent Reserves assessment by SRK did not include a review and assessment of Contingent Resources in the Mamba Project area.

6) Prospective Gas Resources are (100%) Unrisked Gross and are derived from a report to Tlou from Netherland, Sewell and Associates Inc (NSAI) dated 16th February 2012 regarding certification for all coal seams located in the remaining prospecting licences (as previously announced by Tlou in its prospectus dated 20 February 2013).



TLOU ENERGY

www.tlouenergy.com

Significantly de-risked and well advanced CBM project

CBM reserves in place

Reserves booked in both the **Lesedi and Mamba projects**

The company is not aware of any other independently certified CBM gas reserves in Botswana

Request for Proposal (RFP) for up to 100 MW of CBM power

Government plan to add **CBM power to their generation mix** as soon as possible

RFP Tender submission to be lodged in July 2017

Environmental approval in place

The Company has a **100% working interest** in tenements covering over **8,000 Km²**

Government environmental approval in place for upstream operations (2+ year process)

Attractive market opportunity

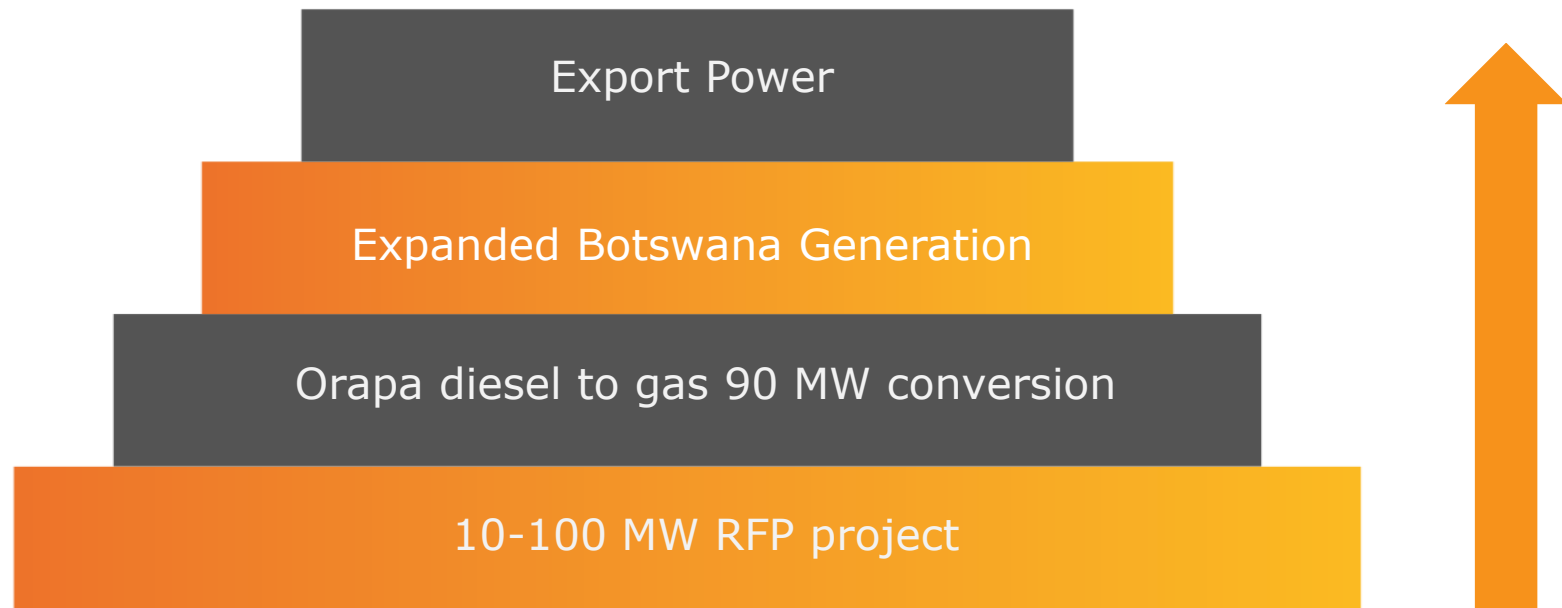
The company has a **large gas asset** in a region chronically short of power and with **demand forecast to grow** steadily



LONG TERM EXPANSION POTENTIAL

10

Long term vision to build a mid-tier energy provider in Southern Africa

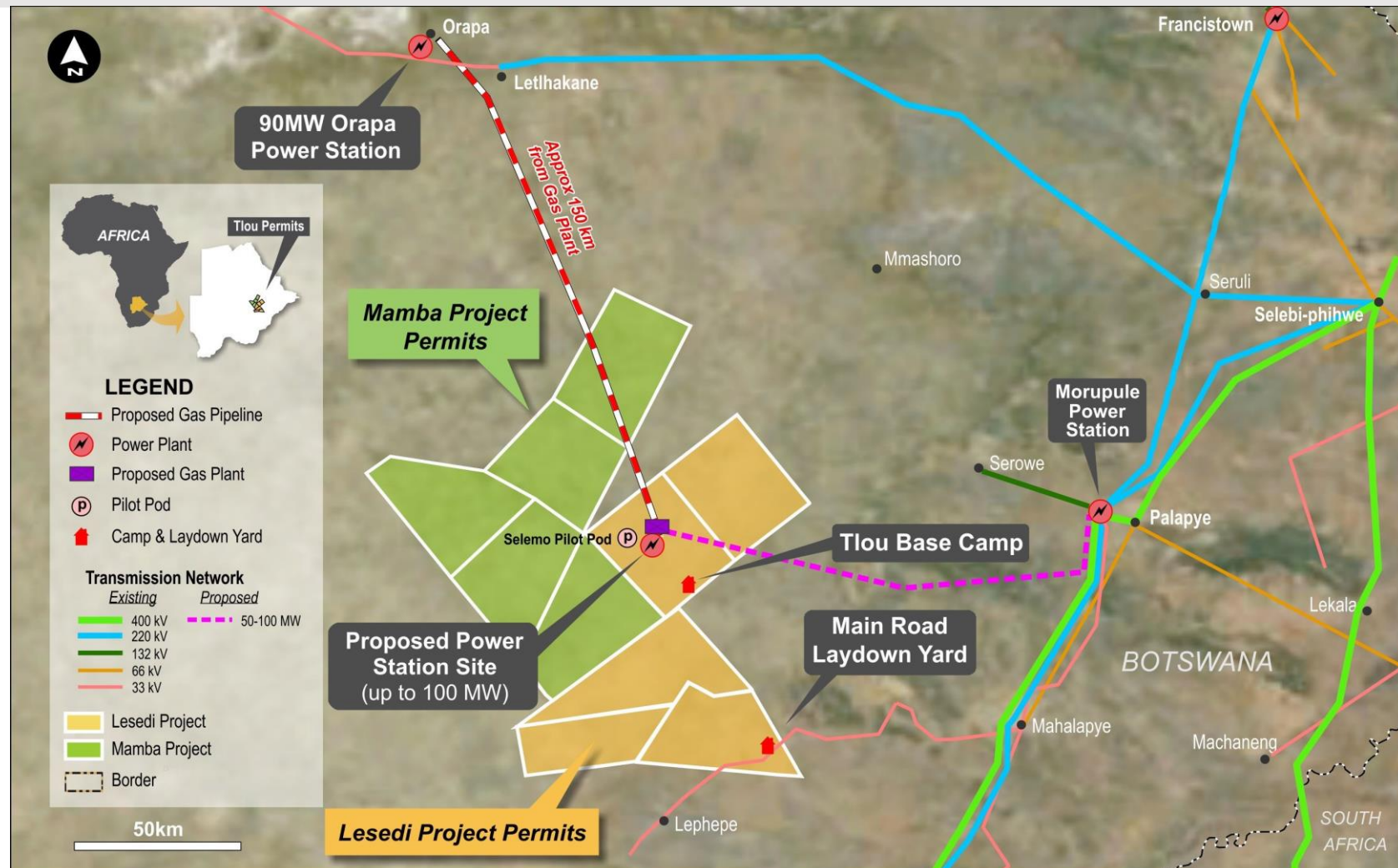


- The Orapa 90MW power plant is an existing government operated dual fuel (diesel and gas) plant located ~150km from Tlou's Lesedi CBM Project. The Orapa plant is current fuelled by diesel only.

GAS TO POWER PLANS IN BOTSWANA

11

Project Location and Supporting Infrastructure



PARTNERS AND CONSULTANTS

12

Experienced partners with worldwide expertise



Independent Power Corporation

- IPC is a British power development company, specialising in high efficiency, low emissions, gas fired power plants.
- provides a complete operations and maintenance service for power generation and distribution assets
- IPC has considerable experience operating in Africa including the development of power projects in Angola, Ghana and South Africa.
- IPC have introduced funding partners who have provided letters of interest for in-principle funding support to Tlou for the downstream infrastructure requirements of the IPP Project
- IPC and its funding partners plan to facilitate the building and funding of the necessary power generation and network access assets, enabling Tlou to commercialise its gas resources



SRK Consulting

- Independent specialist geological consultants
- Develop geological and hydrological model of CBM basins
- Clients include many of the worlds mining and exploration companies
- International firm with offices in 20 countries
- SRK have provided Tlou an updated geological/structural model of the Tlou Project areas to support future gas Reserve assessments



TLOU ENERGY

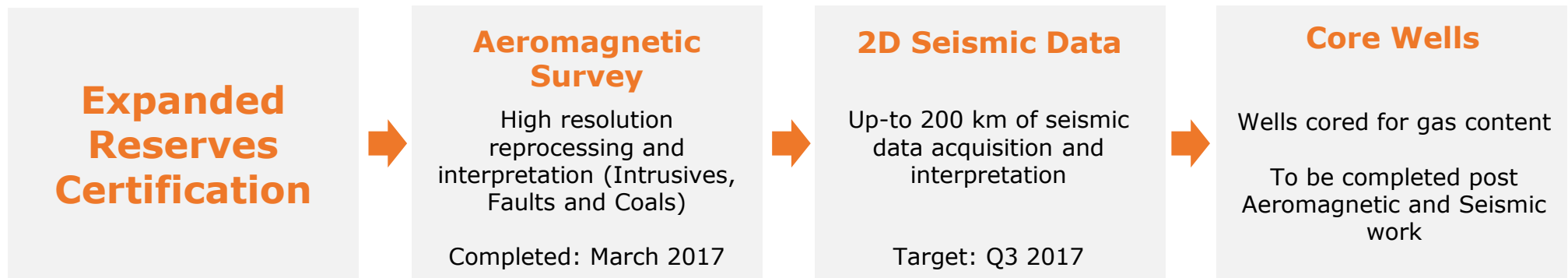
www.tlouenergy.com

IPC Heads of Agreement is a major step in commercialising Tlou's gas resources

- Tlou and IPC to jointly develop an initial 10 MW CBM to power project (IPP Project)
- IPC funding partners have provided letters of interest for in-principle funding support for the downstream requirements of the IPP Project
- Funding partners plan to facilitate the building of power generation and network access assets
- IPC to project manage the installation of the downstream components of the IPP project
- Tlou retains 100% of the Lesedi CBM Project, including current and future gas Reserves
- Tlou to fund and develop the gas field post offtake agreement
- Tlou retains the right to be a meaningful equity participant (up to 50%) in the power generation assets

Forward Work Programs

Expanded Reserves Certification work program aims to increase the 2P and 3P reserves currently in place, based on recommendations from SRK following their geological review of Tlou's data in March 2017. These recommendations include the acquisition of 2D seismic data and drilling of core wells in the Lesedi and Mamba projects.



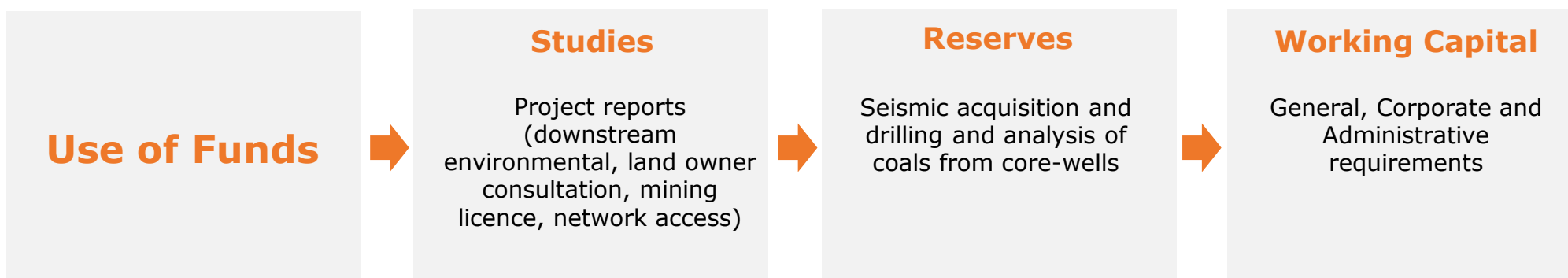
Project Development work program aims to complete regulatory and technical aspects for the 100 MW power project in advance of Government decision on the RFP tender



WORK PROGRAM TO EXPAND GAS RESERVES

15

Work program to complete regulatory requirements and expand independent certified gas reserves



Source of Funds:	USD \$m	GBP £m	AUD \$m
Cash balance (31 December 2016)	1.8	1.5	2.4
Equity Raising* proceeds (net of costs) from Placement and Share Purchase Plan (target)	4.2	3.5	5.6
	6.0	5.0	8.0
Uses:			
2D seismic data acquisition & interpretation	1.7	1.4	2.2
Vertical wells (cored) post seismic acquisition	1.2	1.0	1.6
Studies (upstream and downstream), Mining Licence, Environmental, consultants, fees	1.3	1.1	1.8
Working Capital	1.8	1.5	2.4
	6.0	5.0	8.0

* refer Tlou Announcement dated 24/3/17 for further details of the Equity Raising)



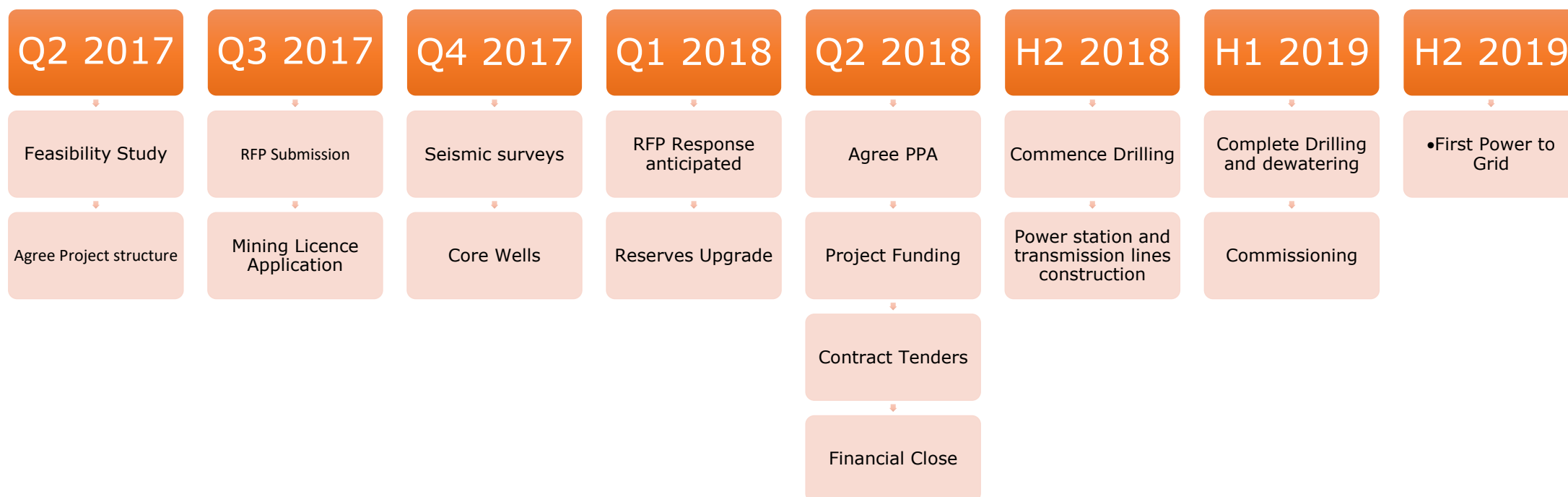
TLOU ENERGY

www.tlouenergy.com

INITIAL PROJECT – MILESTONES

16

Plan in place to deliver first gas to market via the first phase (10 MW) of the 100 MW RFP tender



- The timeline above is indicative and should not be taken as a definitive plan. There are various aspects to the project that are out of the control of Tlou, so may take longer to complete than currently anticipated. This may delay other aspects of the project and the ability of the Company to get power to market.

Summary

17

CBM Reserves in Place

Government RFP for up to **100MW Project**

Approved EIS for Upstream Development

In-Principle funding for downstream project

Attractive Market Opportunity

100% Owned

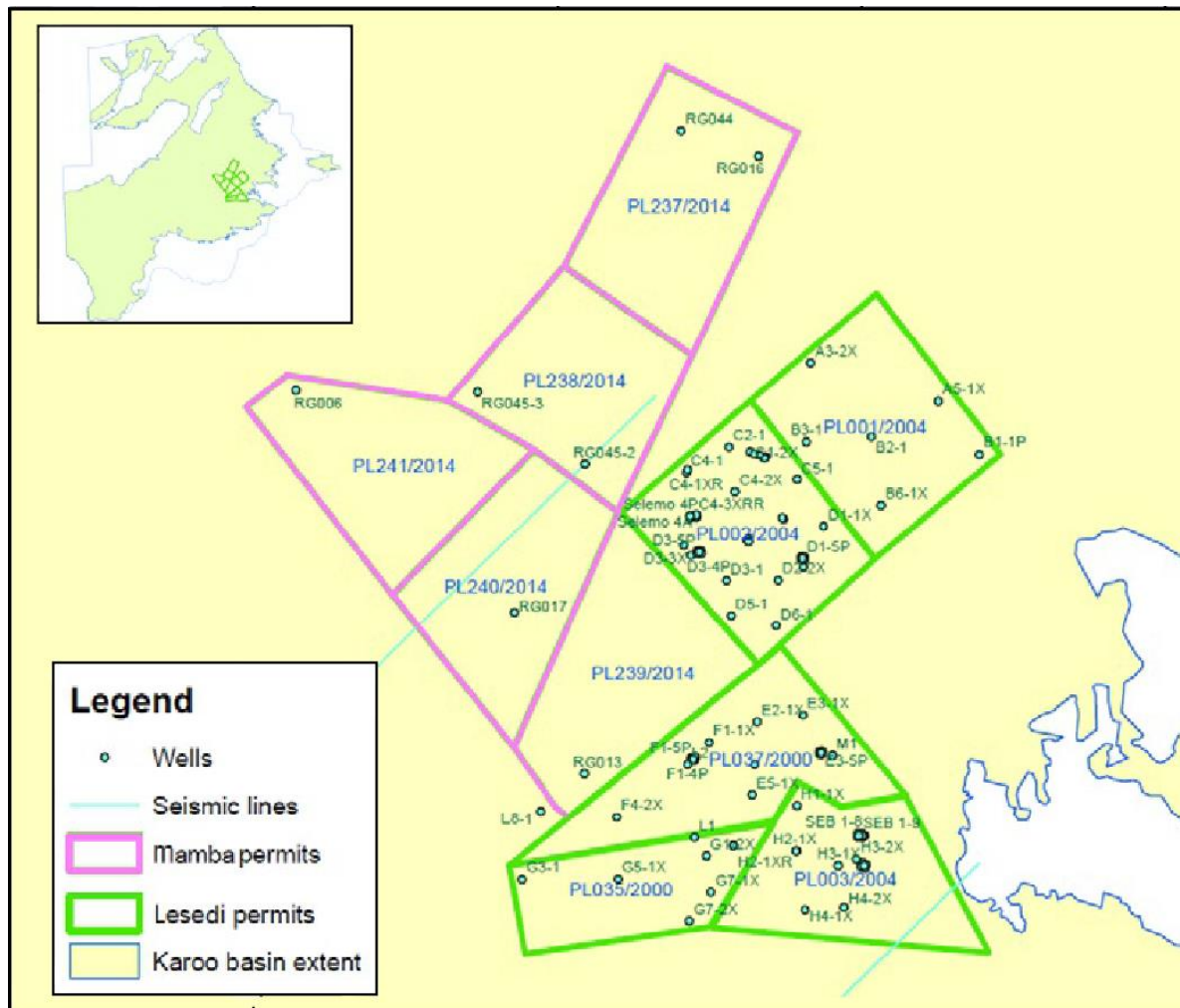


TLOU ENERGY

www.tlouenergy.com

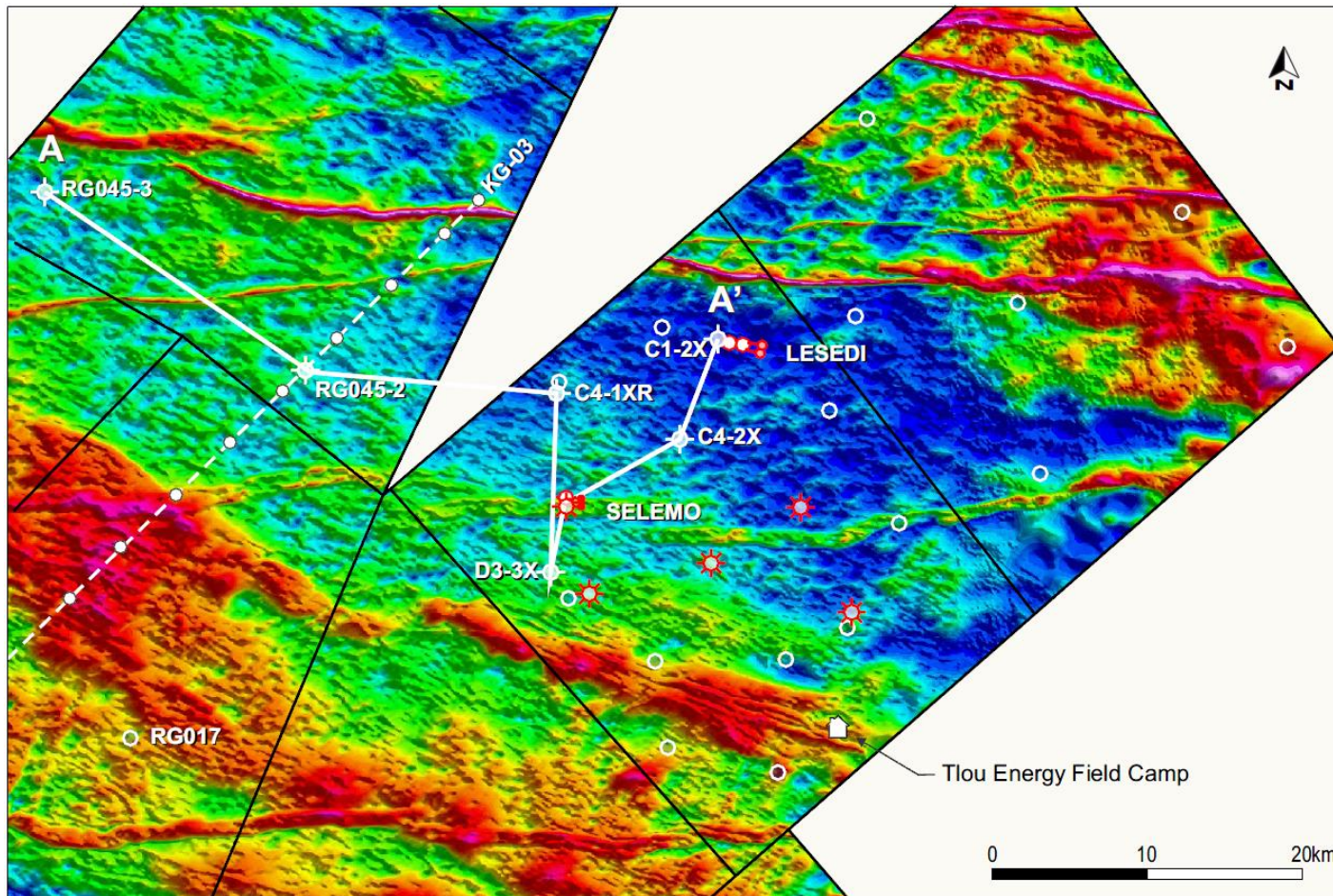
MARKET	ASX / AIM
EPIC	TOU / TLOU
SHARES IN ISSUE	237M
MARKET CAP (13-Mar-17)	AUD - \$27M / GBP - £17M
CASH BALANCE (31-Dec-16)	AUD - \$2.4M
NOMAD	GRANT THORNTON UK LLP
JOINT BROKERS	SHORE CAPITAL STOCKBROKERS LIMITED / OPTIVA SECURITIES LIMITED
PROJECT CO-SPONSOR	INDEPENDENT POWER CORPORATION PLC
GEOLOGICAL CONSULTANTS	SRK CONSULTING (AUSTRALASIA) PTY LTD

Geological Database for the Lesedi and Mamba Projects



- Extensive geological database used to provide an accurate sub-surface picture;
- Comprises over 100 wells in the Tlou Project area and surrounds;
- Includes many wells cored and evaluated for CBM parameters (e.g. gas content);
- Seismic data also exists within the Mamba Project area.

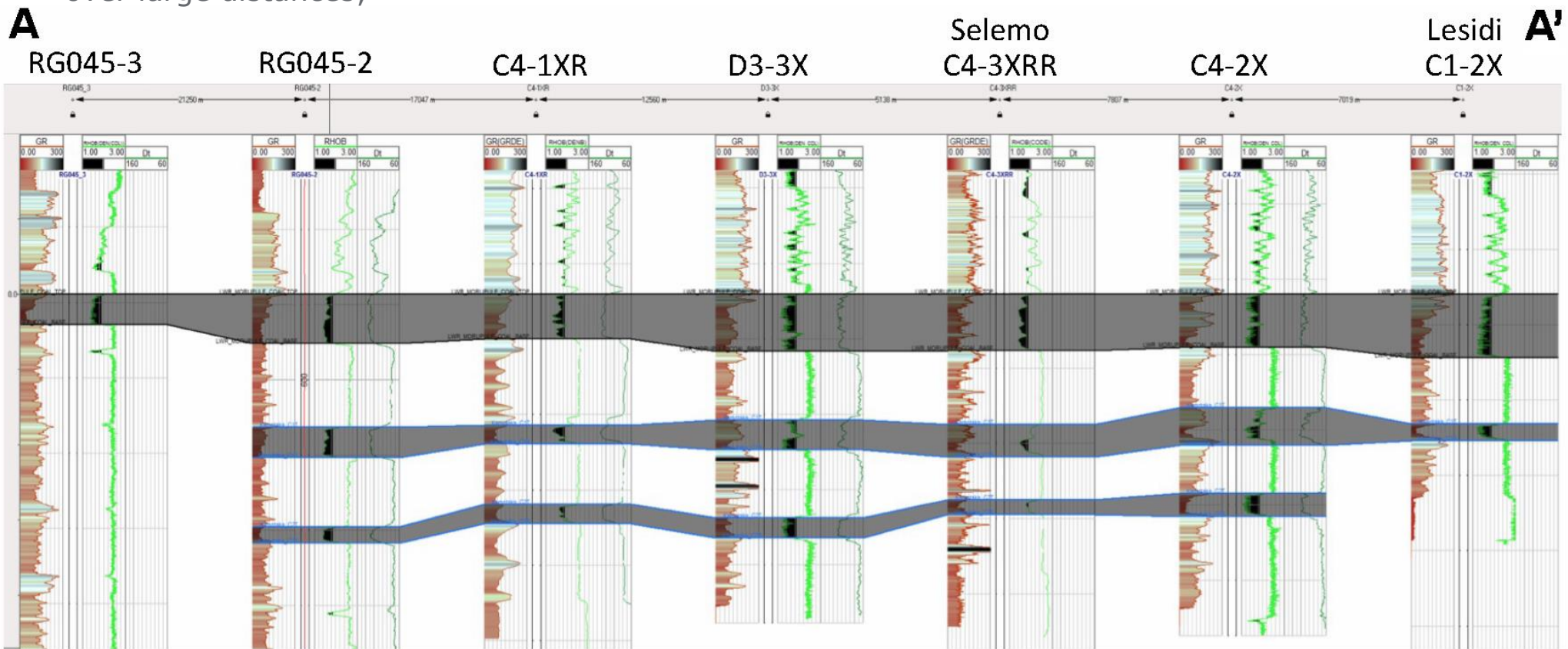
Aeromagnetic Map of the Lesedi and Mamba Projects



- Tlou recently commissioned reprocessing of existing aeromagnetic data;
- Structural features are now more clearly evident;
- Lower risk areas have been high-graded for more work;
- Provides framework for new seismic acquisition.

Cross-section A-A' showing lateral extent of Lower Morupule Coal target

- Lower Morupule Coal target section is laterally extensive over large distances;
- Thickness variations are relatively minor;
- Additional CBM targets also exist.



TRANSMISSION DEVELOPMENT PLAN

22



Source: BPC, Botswana Resource Sector Conference 2016

Tlou Energy Limited

210 Alice St
Brisbane
QLD 4000
Australia
+61 7 3012 9793

Ground Floor, Victoria House
132 Independence Avenue
Gaborone
Botswana
+267 316 0857

www.tlouenergy.com
info@tlouenergy.com

ASX: TOU
AIM: TLOU



TLOU ENERGY