









ALPHAGO  
00:00:54

LEE SEDOL  
00:01:00



AlphaGo

Lee Sedol

AGE = Under 18

12:41 hrs



GENDER = FEMALE

TOTAL  
SUN  
PROTECTION  
=  
23%  
INADEQUATE

2017.03.12



SYSTEM MAP

TEMPERATURE

L M H

ULTRAVIOLET  
LEVEL

L M H

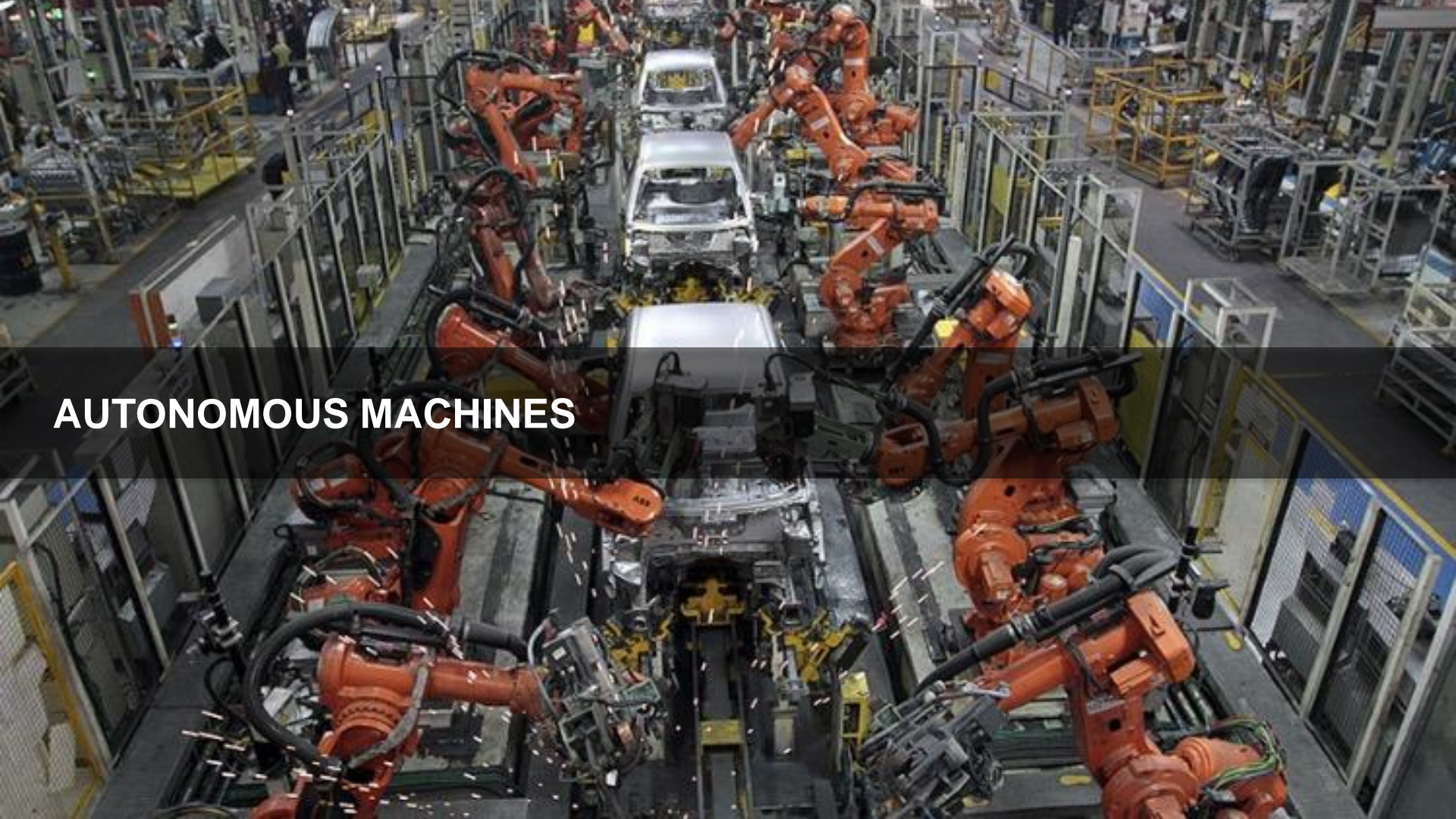
EMOTIONS



HAPPY

SAD



An aerial view of a car assembly line. Several white car chassis are positioned on a conveyor belt. On both sides of the belt, numerous orange robotic arms are visible, some of which are actively working on the cars. The background shows a complex industrial environment with various metal structures, pipes, and equipment. A semi-transparent dark grey horizontal band is overlaid across the middle of the image, containing the text "AUTONOMOUS MACHINES" in white, bold, sans-serif capital letters.

**AUTONOMOUS MACHINES**











# THE COMING TRANSPORT REVOLUTION WILL RE-SHAPE OUR CITIES AND COMMUNITIES

The average vehicle is used only 4% of the time and parked the other 96%



# THE WORLD'S FIRST FULLY AUTONOMOUS SEMI-TRAILER TRUCK DELIVERY OCT 16





OUR  
MENU

LOCAL  
DEALS

STORE  
FINDER

DOMINO'S  
FRANCHISE

INSIDE  
DOMINO'S

VIP

DAILY DEALS  
TO YOUR INBOX

j.smith@email.com

JOIN ▶

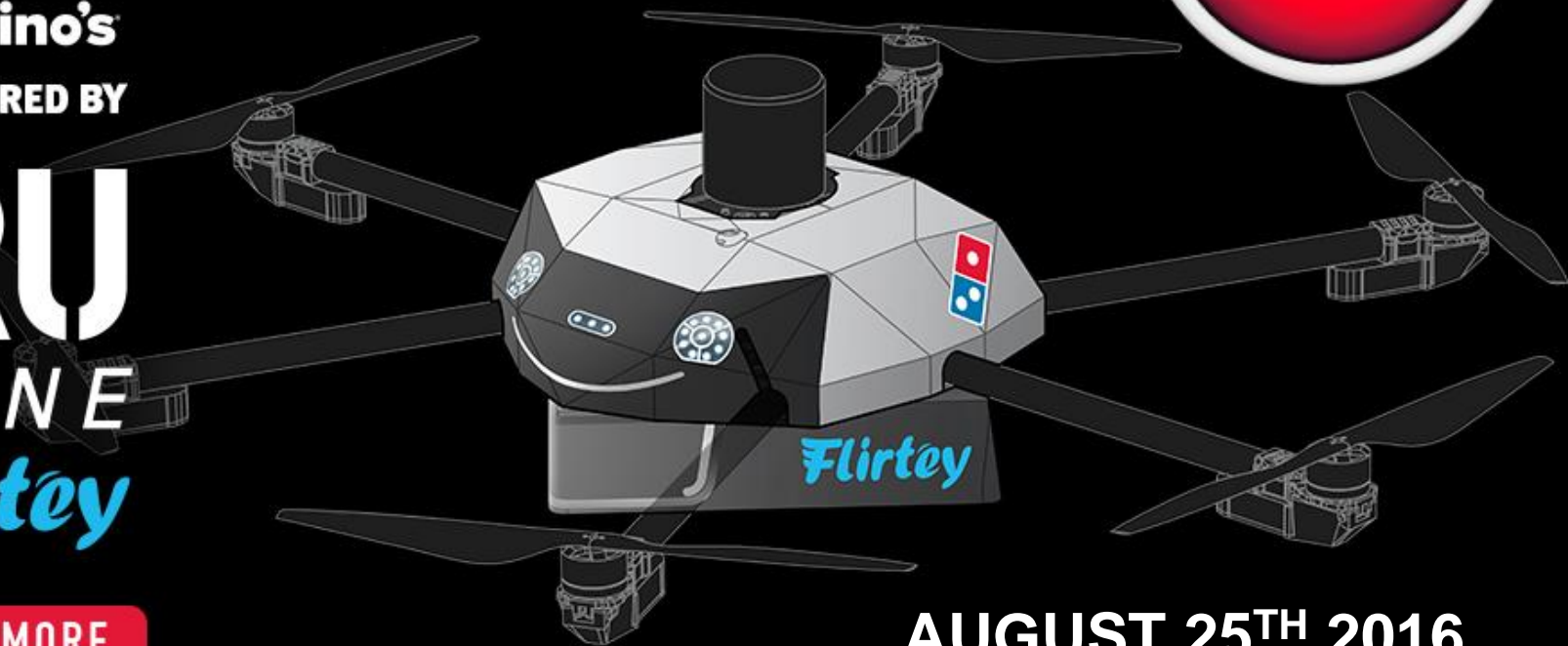
ORDER  
ONLINE



NOW DELIVERED BY

**DRU**  
**DRONE**  
BY *Flirtey*

FIND OUT MORE



AUGUST 25<sup>TH</sup> 2016





# TURNING SCIENCE FICTION INTO SCIENCE REALITY

The \$10 million global competition to put  
healthcare in the palm of your hand.

QUALCOMM  
TRICORDER **XPRIZE**

LEARN MORE



STAR TREK, TRICORDER and related marks and logos are trademarks of CBS Studios Inc. Used under license.



# HEALTHCARE



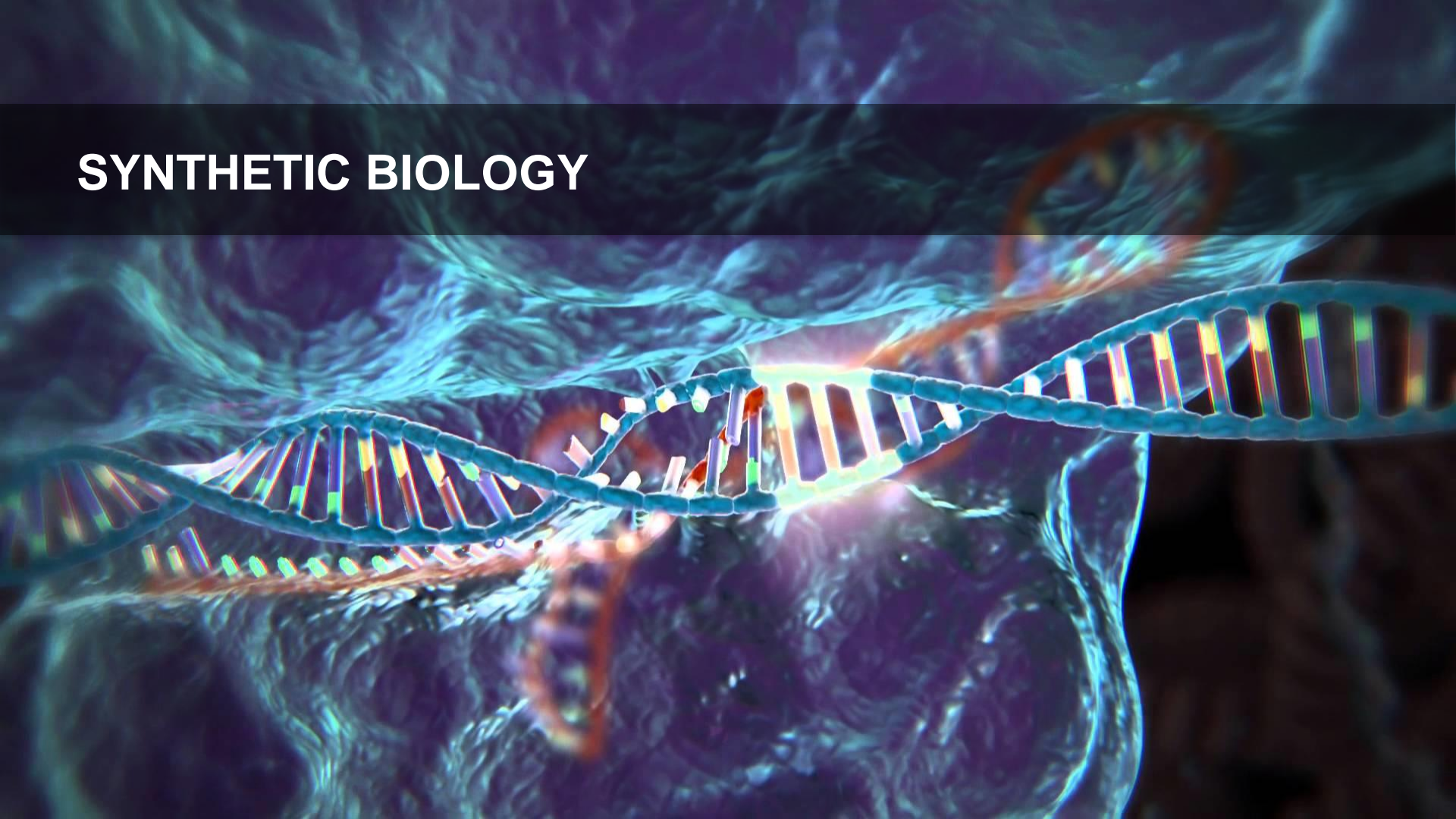


## 3D PRINTING

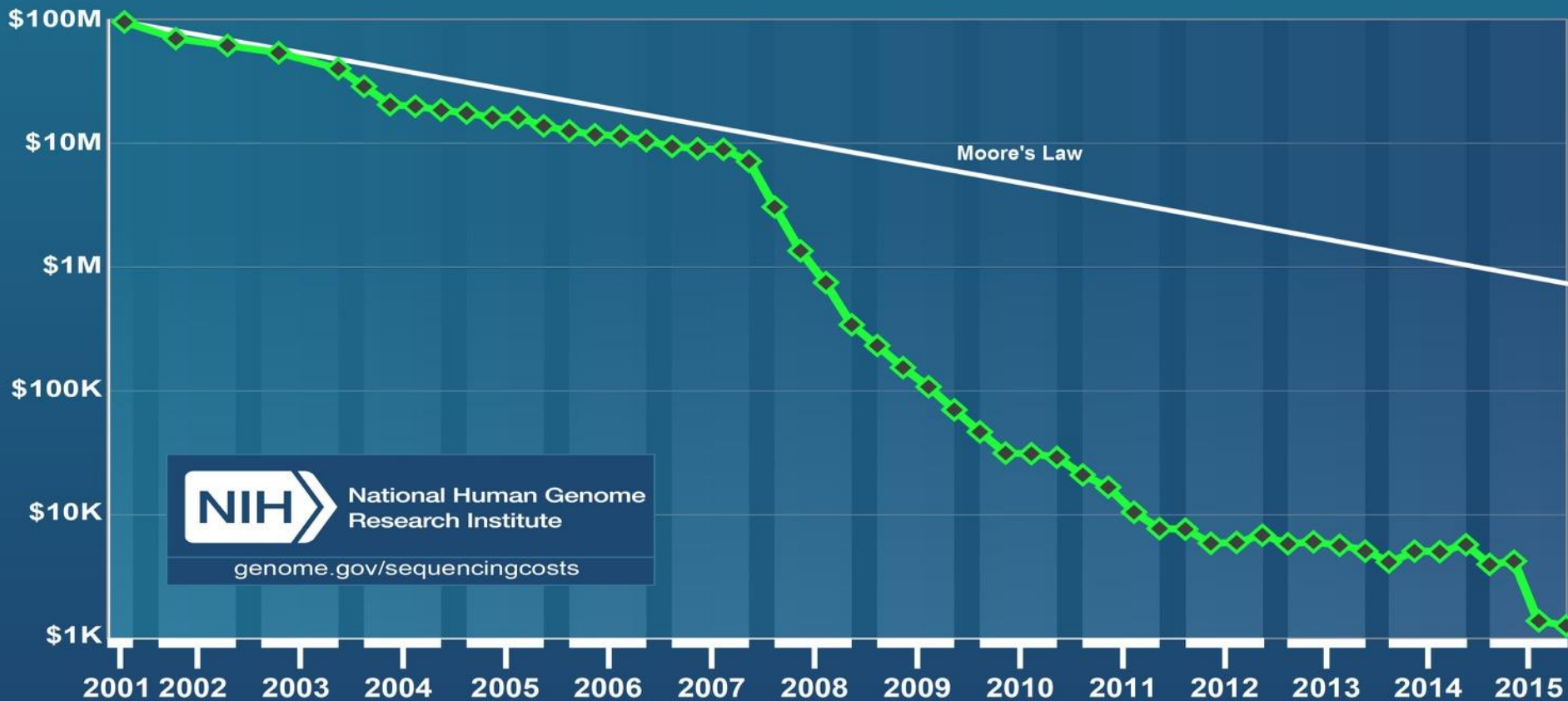
Anthony Atala, Director of the Wake Forest Institute for Regenerative Medicine



# SYNTHETIC BIOLOGY



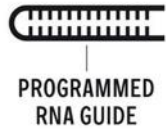
## Cost per Genome



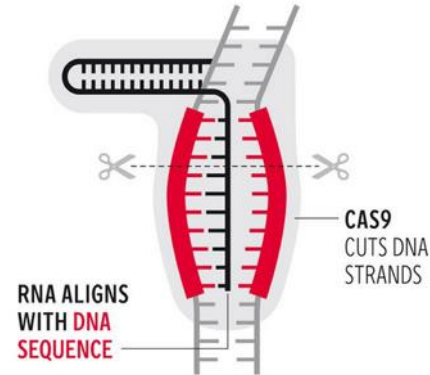
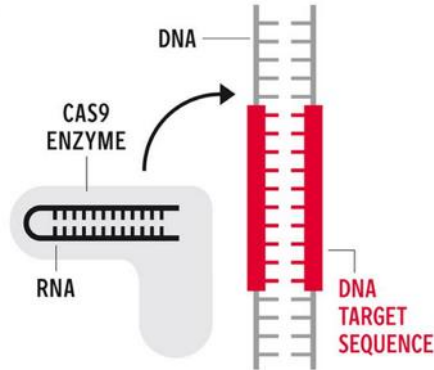


## A BRAVE NEW WORLD OF GENOME EDITING

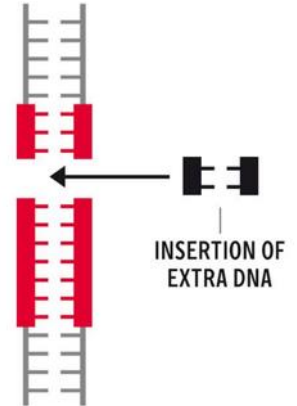
How the Crispr system derived from bacteria works on human cells to correct genetic defects



- 1 An RNA “guide” molecule can be **programmed to match any unique DNA sequence** found in the human genome
- 2 A special enzyme, called **CAS9**, can be attached to the RNA guide. Its job is to find the target sequence of DNA



- 3 The RNA aligns with the target DNA sequence and the **CAS9 attaches and cuts both strands of the DNA double helix**
- 4 The DNA cuts can be **amended with an extra DNA insertion** (above), or a deletion of defective DNA



# VIRTUAL REALITY





# AUGMENTED REALITY

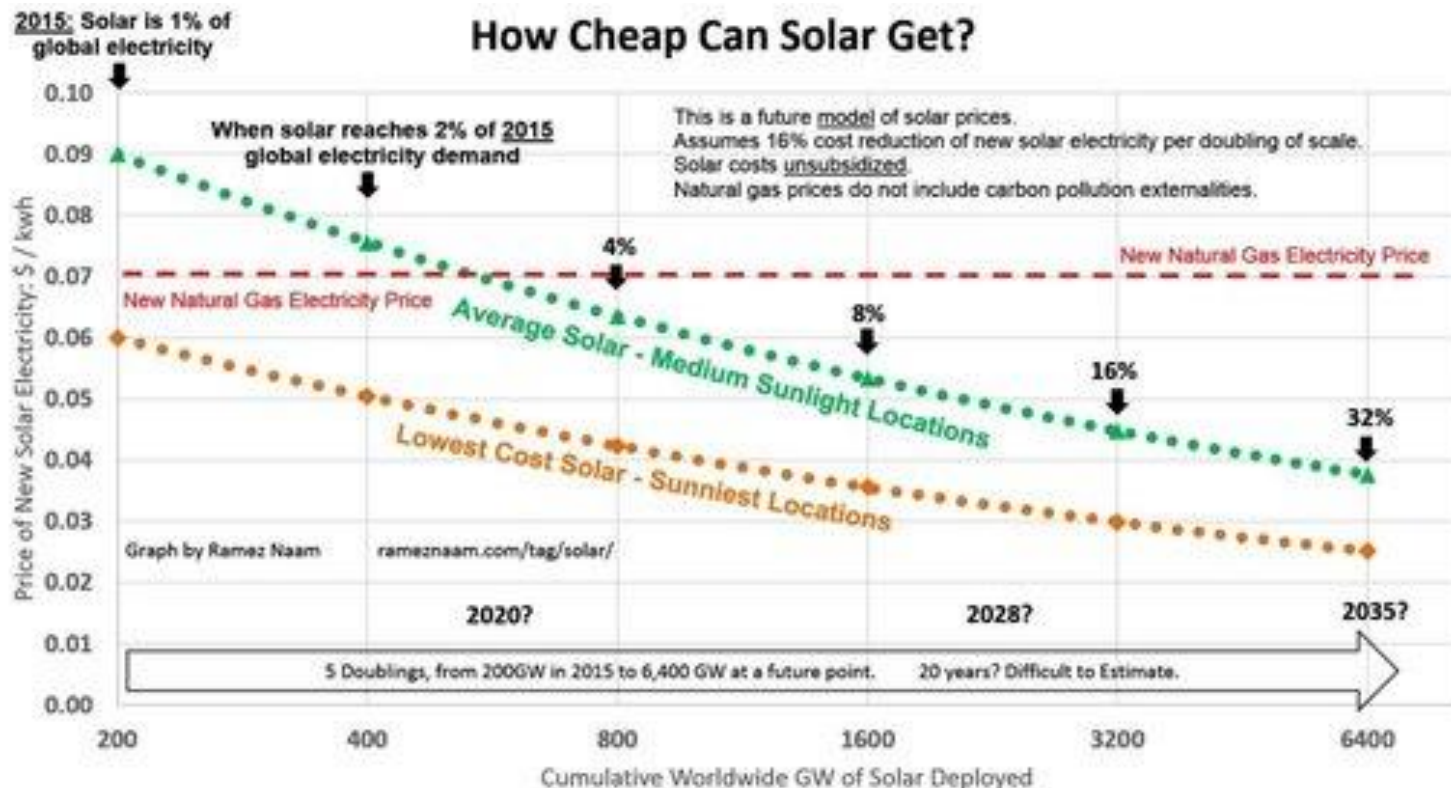


An aerial photograph of a large industrial building with a flat roof. The roof is covered with numerous blue solar panels, arranged in rows. There are several large HVAC units and ductwork visible on the roof. The building has a modern design with grey and white panels and a red section at the bottom. The text "RENEWABLE ENERGY" is overlaid in white on the left side of the image.

**RENEWABLE ENERGY**



## How Cheap Can Solar Get?





**$1\text{ km}^2 = 1,000,000\text{ m}^2$**

**$1\text{ kW}$  per  $1\text{ m}^2$  of solar energy**

**$1\text{ km}^2 = 1\text{ GW}$  of solar energy**



# PHOTOVOLTAIC BUILDING MATERIALS











What does this mean for the data centre?



**\$2B**

# AUSTRALIAN DC SERVICES MARKET \$2B BY 2021

“Cloud services providers are amongst the largest users of data centre facilities in the world and this is a catalyst for growth in the DC ecosystem, drawing enterprise customers, telcos and IT services firms.”

Wonjae Shim, Research Analyst, ICT Practice Australia & New Zealand, Frost & Sullivan

By 2018

**45%**  
of enterprise  
ICT spend will  
be on colocation  
& public cloud  
data centres

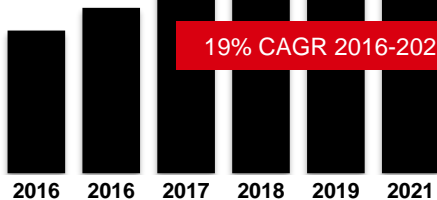
IDC FutureScape: Worldwide Datacenter 2017  
Predictions – APeJ Implications (Dec 2016)

By 2021

APAC colocation market  
revenue

**\$13b**

19% CAGR 2016-2021



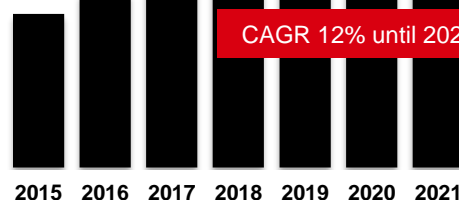
Research and Markets, Asia Pacific Colocation Market  
– Forecasts from 2016 to 2021

By 2021

Australian colocation data  
centre services revenue

**\$2b**

CAGR 12% until 2021



Frost & Sullivan report: Australian Data Centre Services Market 2016



# **Daily data created by 2020:**

**Avg internet user                      1.5GB**

**Autonomous vehicle                  4TB**

**Connected airplane                  5TB**

**Smart factory                          1PB**

**Cloud video                            750PB**

# Data centres are the key platform for the digital economy

In 2018

**\$1.7B**

predicted to be spent  
on public cloud IT  
services in Australia,  
double the 2014 spend

*IDC report, Australian Public IT Cloud  
Services 2014-2018*

**81%**

of companies choose  
hybrid cloud  
deployments for  
flexibility and scalability

*State of Hybrid Cloud 2015, IDG Connect*

In 2019

**40%**

of all Australian  
enterprises will be  
using hybrid cloud

*Telsyte Australian Infrastructure & Cloud  
Computing Market Study 2015*





A platform ...is simply a way of building something that is open, inclusive, and has a strategic focus. Think of the difference between a roadside store and a shopping centre. The mall has many advantages in size and scale and every store benefits from the marketing and promotion done by others. They share infrastructure and costs. The mall owner could have tried to have it all by building one big store, but it would have missed out on the opportunities to collect rent from everyone and benefit from the diverse crowds that the tenants attract."

# IT'S WHAT MAKES THESE COMPANIES SO DISRUPTIVE



**90,000**

new customers sign  
on to Microsoft Azure  
every month



**33%**

of internet users  
visit websites built  
on AWS every day



**50,000**

new Uber  
drivers sign up  
every month



**>2m**

businesses are  
paying to use  
Google Work  
productivity suite

**NETFLIX**

**36.5%**

of North American  
downstream traffic in  
peak evening hours



**17m**

people stayed with  
an Airbnb host  
over summer



**2.8m**

videos are  
viewed every  
minute

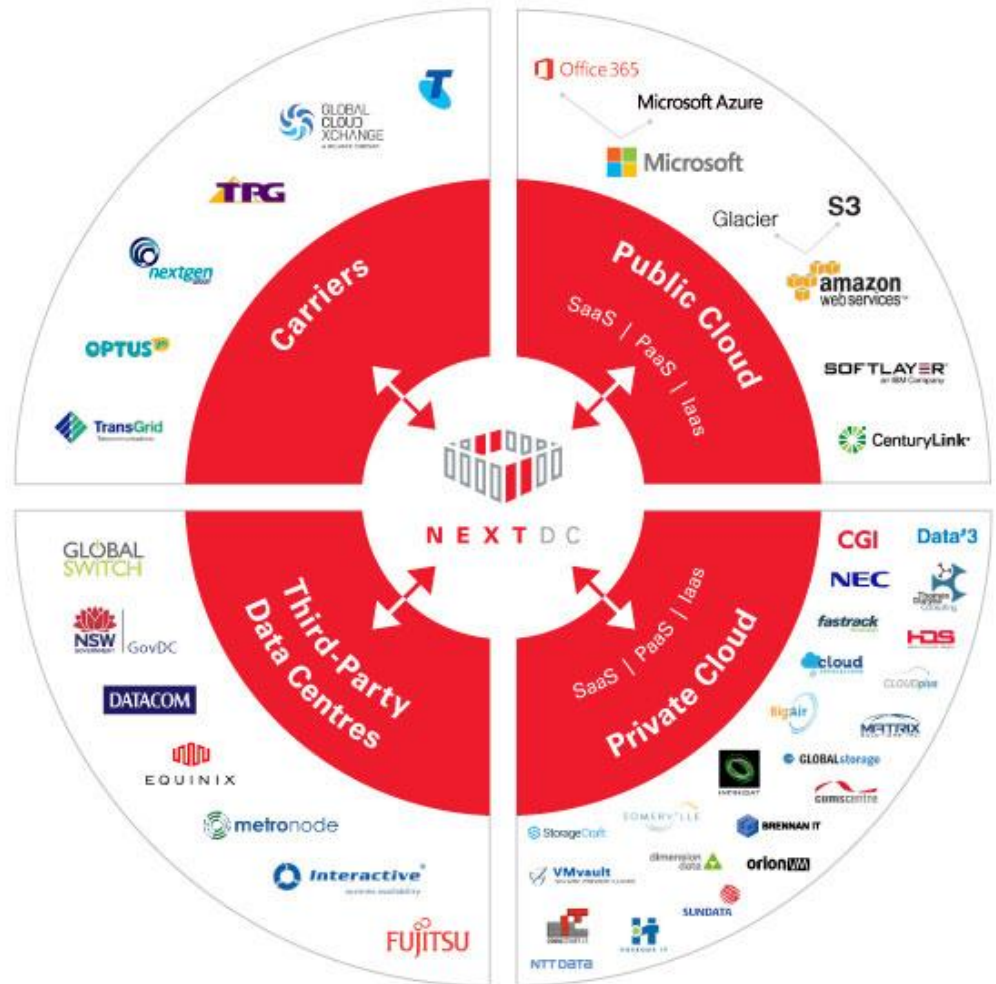
**facebook**

**6bn**

Facebook  
pages are  
viewed  
every minute

# THE PLATFORM GROWS INTO A UNIQUE ECOSYSTEM

Endless opportunities  
to connect with public  
and private cloud to  
deliver innovative  
services







# Increased business agility is rated as the most valued benefit of cloud computing

*Harvard Business Review*  
*"How the Cloud Looks from the Top"*

[https://hbr.org/resources/pdfs/tools/16700\\_HBR\\_Microsoft%20Report\\_LONG\\_webview.pdf](https://hbr.org/resources/pdfs/tools/16700_HBR_Microsoft%20Report_LONG_webview.pdf)

“

At the moment less than 0.5% of all data is ever analysed and used, just imagine the potential here.

<https://www.technologyreview.com/s/514346/the-data-made-me-do-it/>





# VISION

Our vision is to help enterprises harness the digital age, improving our society through the advancement of technology



# MISSION

Our mission is to be the leading customer-centric data centre services company, delivering solutions that power, secure and connect enterprise



# STRATEGY





A woman with long dark hair, wearing a black blazer over a light blue top, stands in the center of a server room aisle. She is smiling and has her hands clasped in front of her. The aisle is lined with blue server racks on both sides, and the perspective leads the eye down the center. The lighting is bright and even.

# **HYPERSCALE**

From 1kW quarter racks to 30kW/m<sup>2</sup> super compute platforms



A technician in a black polo shirt is working on a large, blue industrial engine. He is holding a small electronic device and appears to be checking or adjusting a component. The engine is complex with many pipes and hoses. In the background, there are red cables bundled together.


No break SLA

100%

Availability guarantee

**ENGINEERED FOR RELIABILITY**

Mission critical systems with UTI Tier III world class standards



Inert  
gas fire  
suppression  
system

# MISSION CRITICAL

N+1 redundancy for mechanical and electrical infrastructure





# EFFICIENT

NABERS 4.5 star certified energy efficiency





# SECURE

Multi-layered defense provides security for highly sensitive data

A photograph of a modern office interior with large windows and a red wall. In the foreground, two men in business suits are shaking hands and smiling. In the background, two other people are visible, also in business attire. A green plant is on the left side of the frame.

# ECOSYSTEM

We'll help you find the right suppliers  
for every project, every time.

CLOUD CENTRE



# CUSTOMER EXPERIENCE

World class customer experience from digital to physical





# HIGHLY CONNECTED

Unlimited connection possibilities enable hybrid cloud solutions



# ELASTIC

Create secure, high-speed connections between  
your data centres, networks and clouds



AXON VX

A photograph of two men in white shirts sitting on a ledge, looking at a laptop. The man on the left is pointing at the screen, and the man on the right is gesturing with his hand. The background is a modern office with a staircase and glass walls.

# REMOTE CONTROL

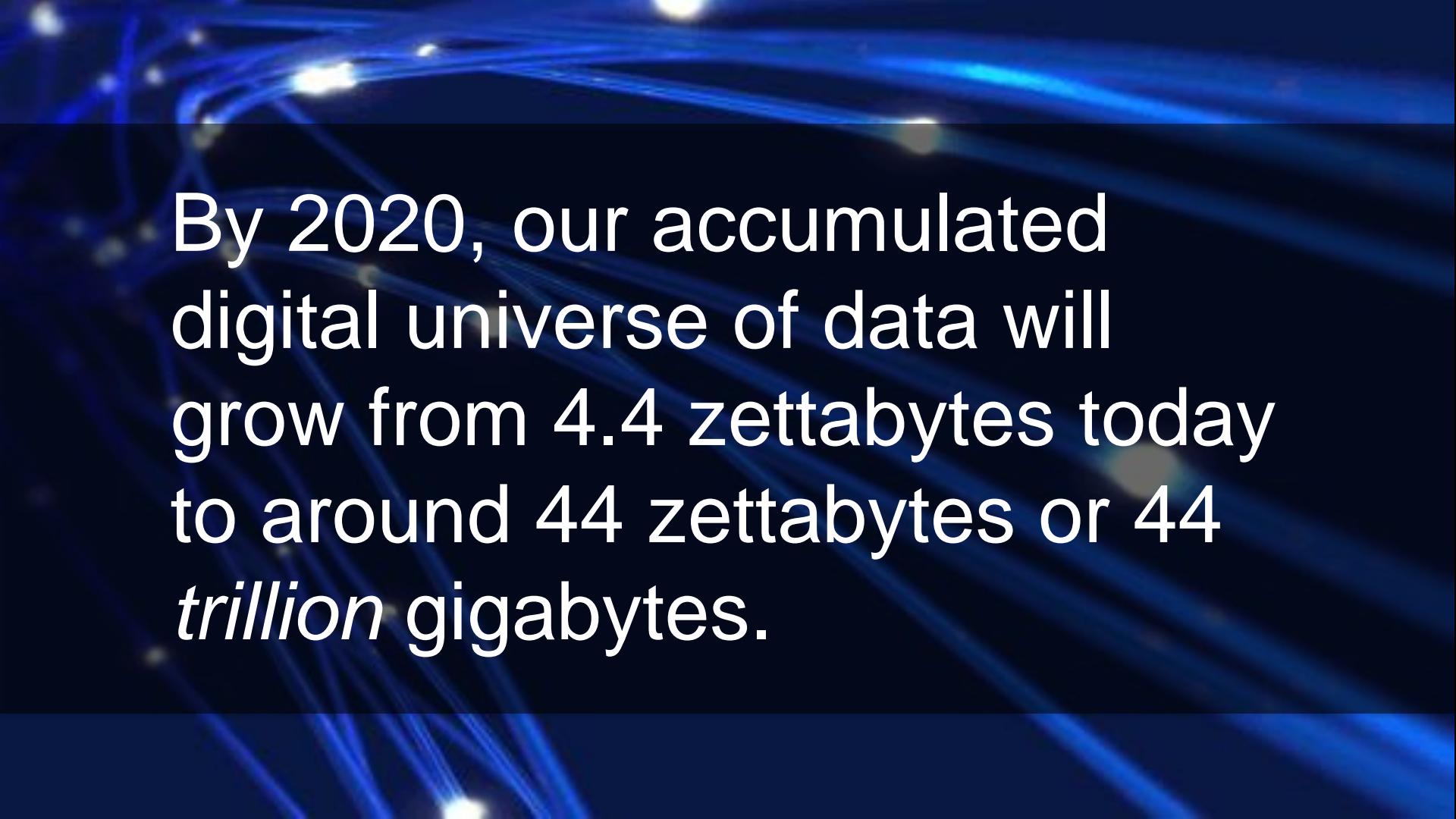
Keep tabs on your infrastructure with real-time intelligence





The background is a complex, layered collage of financial data visualizations. It includes several line charts with fluctuating lines in red, green, and blue. There are also bar charts and numerical data points scattered throughout. A prominent blue diagonal band runs across the middle. The overall aesthetic is high-tech and data-driven, with a color palette dominated by reds, greens, and blues.

# FUNDING EXPONENTIAL GROWTH

The background is a dark blue field filled with numerous bright blue, glowing lines that curve and intersect. Small, bright white and blue dots are scattered throughout, resembling stars or data points. The overall effect is one of dynamic energy and digital connectivity.

By 2020, our accumulated digital universe of data will grow from 4.4 zettabytes today to around 44 zettabytes or 44 *trillion* gigabytes.