



LCME

LITHIUM CONSOLIDATED MINERAL EXPLORATION LIMITED

ASX: Li3

Company Presentation
May 2017

Lithium brine exploration

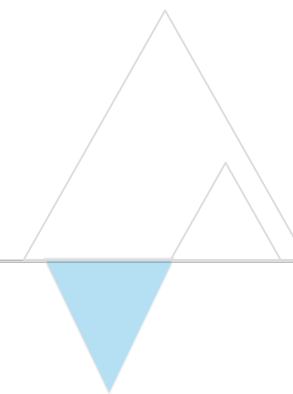


Important notice

- Any material used in this presentation is only an overview and summary of certain data selected by the management of **Lithium Consolidated Mineral Exploration Limited (“LCME”)**.
- The presentation does not purport to contain all the information that a prospective investor may require in evaluating a possible investment in LCME nor does it contain all the information which would be required in a disclosure document prepared in accordance with the requirements of the Corporations Act and should not be used in isolation as a basis to invest in LCME. Recipients of this presentation must make their own independent investigations, consideration and evaluation of LCME.
- LCME recommends that potential investors consult their professional advisor/s as an investment in LCME is considered to be speculative in nature.
- Statements in this presentation are made only as of the date of this presentation unless otherwise stated and the information in this presentation remains subject to change without notice. Reliance should not be placed on information or opinions contained in this presentation.
- To the maximum extent permitted by law, LCME disclaims any responsibility to inform any recipient of this presentation on any matter that subsequently comes to its notice which may affect any of the information contained in this document and presentation and undertakes no obligation to provide any additional or updated information whether as a result of new information, future events or results or otherwise.
- No representation or warranty, express or implied, is made as to the fairness, accuracy, completeness or correctness of the information, opinions or conclusions contained in or derived from this presentation or any omission from this presentation or of any other written or oral information or opinions provided now or in the future to any person.
- To the maximum extent permitted by law, neither LCME nor, any affiliates, related bodies corporate and their respective officers, directors, employees, advisors and agents, nor any other person, accepts any liability as to or in relation to the accuracy or completeness of the information, statements, opinions or matters (express or implied) arising out of, contained in or derived from this presentation or any omission from this presentation or of any other written or oral information or opinions provided now or in the future to any person.



Introduction



1. LCME has the largest lithium brine exploration land position in Nevada^(a)
2. Nevada is a suitable setting for developing new lithium brine processing facilities
3. Lithium brine:
 - Large-scale, low cost supply
 - 66% of global resources^(b)
 - Lowest-cost source of Li_2CO_3 ^(c)

Source:

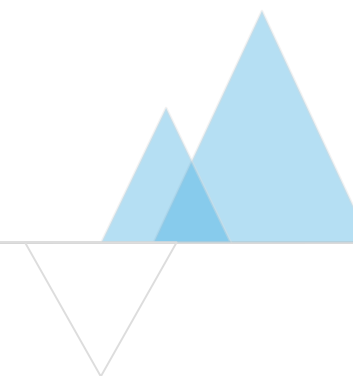
a) Company estimate

b) Equity Research Reports and company estimates

c) Lithium carbonate (Li_2CO_3)



Company overview



Share price (08/05/17)	\$0.145
Shares on Issue (undiluted) ^(a)	89,972,122
Market capitalisation	\$13.05m

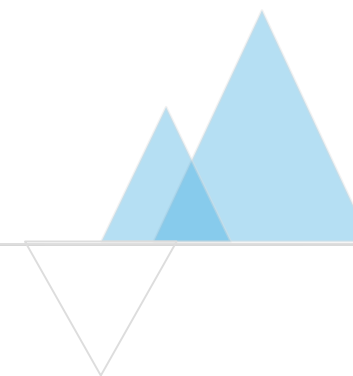
Notes:

- a) Excludes 4.0m options (with an exercise price of \$0.10-\$0.20) and 7.5m Performance Rights with varying vesting and ASX escrow conditions

Nevada: core assets	Botswana	Australia
Nevada – Tonopah Lithium <ul style="list-style-type: none">- 1,241 placer claims- 3.2 km from Silver Peak lithium mine Nevada – Teels <ul style="list-style-type: none">- 785 placer claims	<ul style="list-style-type: none">- 6 Prospecting Licences and 2 Applications over the Makgadikgadi Pans in north eastern Botswana	WA <ul style="list-style-type: none">- 10 Exploration Licence Applications (444km²) SA <ul style="list-style-type: none">- 5 Exploration Licence Applications (5,680 km²)



Why Lithium Brine?



- Lithium brine is 66% of global reserves
- Lithium brine is the lowest-cost source of Li_2CO_3

	Brine	Hard rock	Clay
% of global reserves ^(a)	66%	26%	8%
Value of product ^{(b) (c)}	+US\$8,500/t	+US\$800/t	x
Typical grade	200-1,500ppm Li	1.0 – 1.5% Li_2O	1,800-3,000ppm Li
Cash production costs (US\$/ t Li_2CO_3) ^(d)	US\$2,000-3,000/t	US\$5,000-8,000 /t	?
Established process	Evaporation + chemical process	Concentration + roasting + chemical	x

Notes:

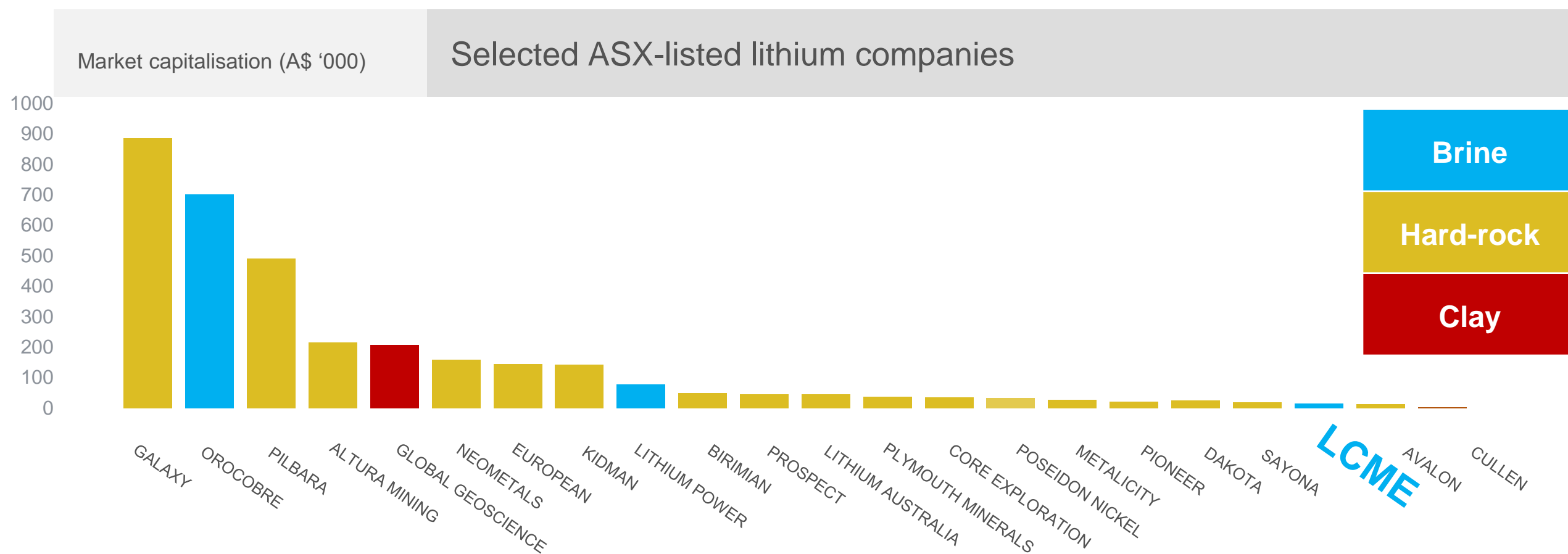
- a) Equity Research Reports
- b) Mine-gate product revenue.
- c) Company estimates
- d) Company estimates



ASX-listed Lithium companies



- Lithium brine sector is under-represented on the ASX

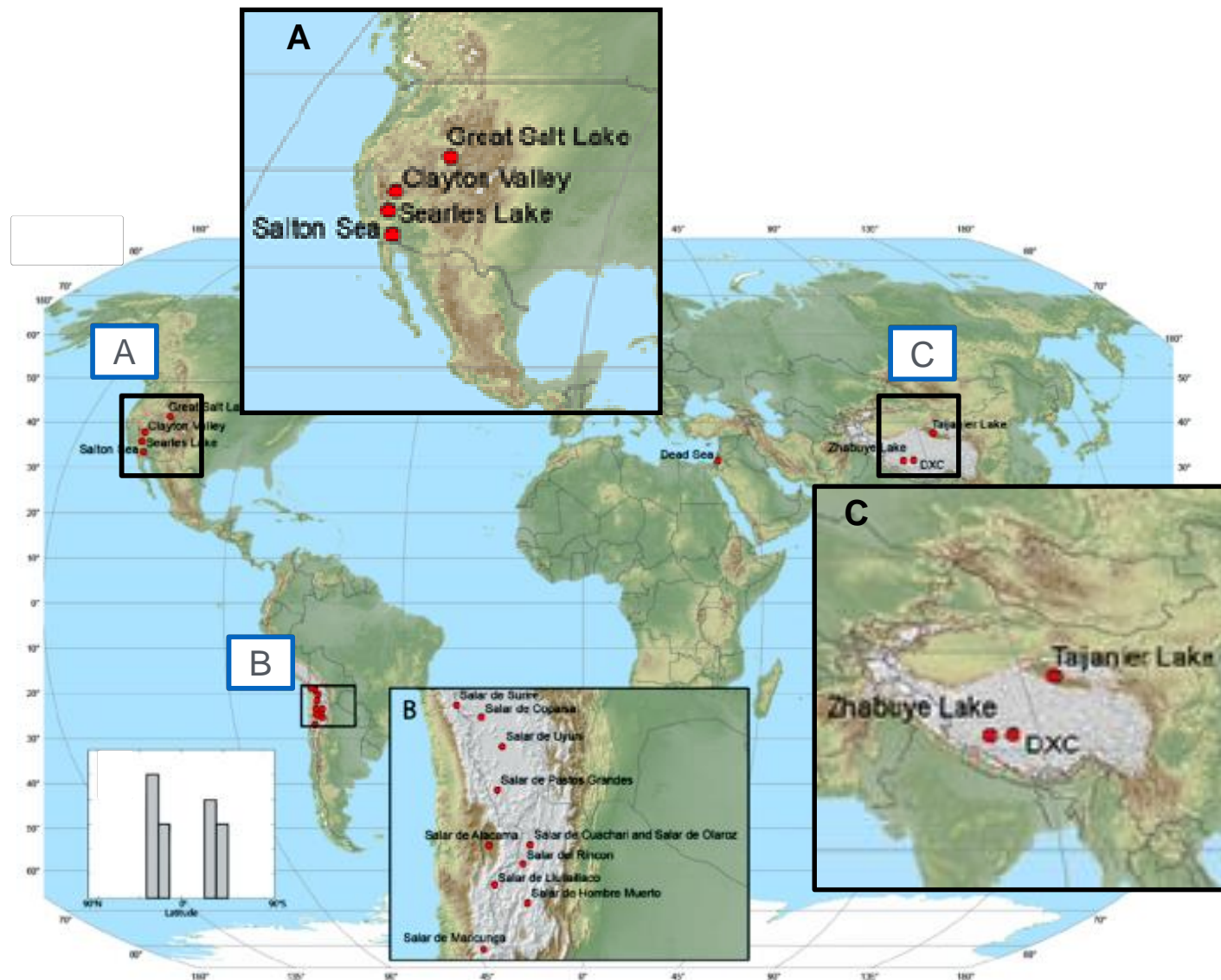


Notes:

- a) Estimated fully diluted market capitalisation
- b) Includes quoted and unquoted securities
- c) Based on share prices as of 08/05/17



Nevada: key Lithium Brine region

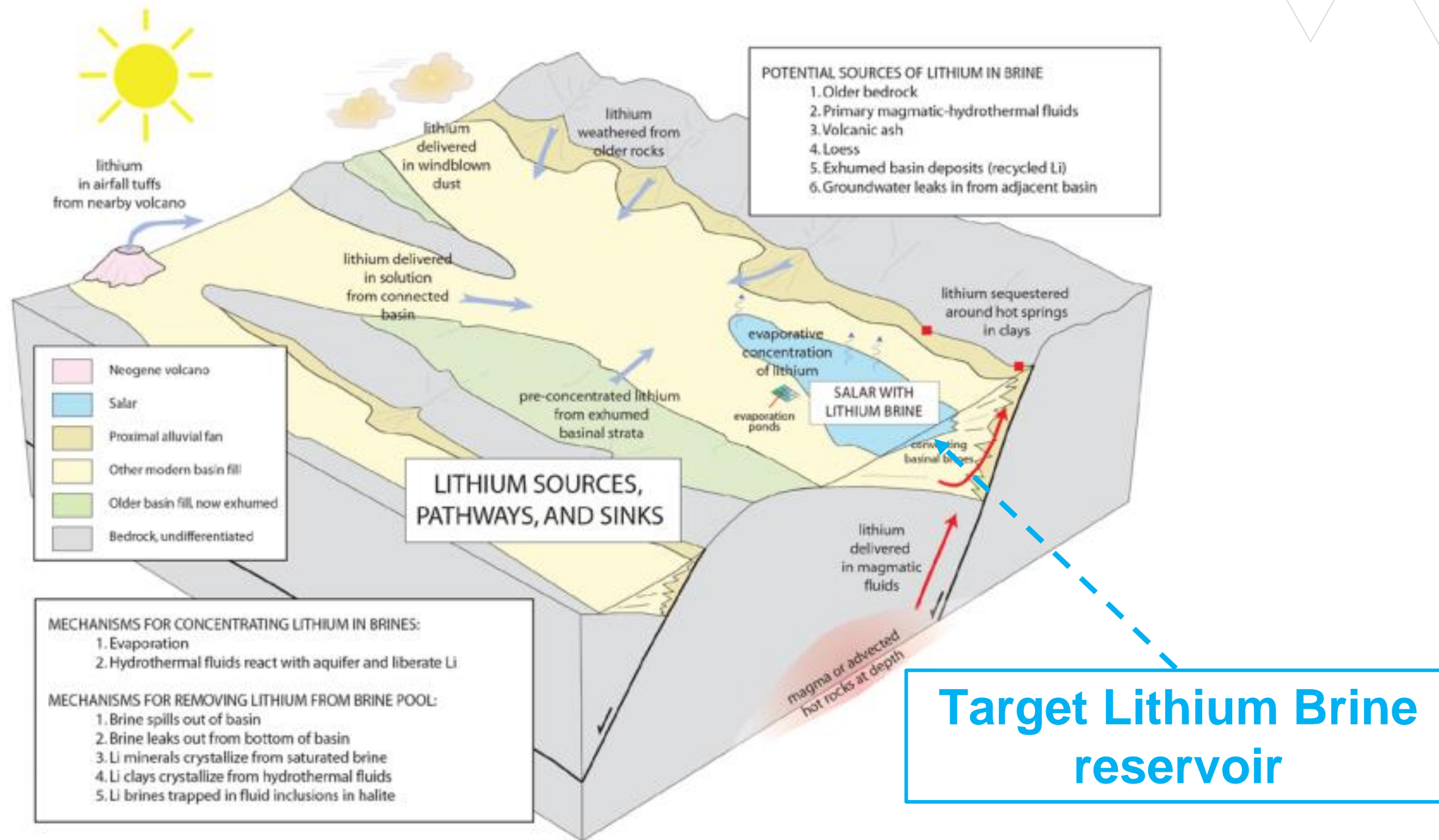


- Nevada is 1 of 4 key Li brine producing regions globally
 - others: China, Chile and Argentina
- Nevada is a suitable setting:
 - Li brine rich geology
 - Proven Li chemistry : +40 years at Silver Peak mine
 - Low Mg impurity levels (vs. Chile and Argentina)
 - Supportive Government and counties
 - Fraser Institute ranking: Nevada is No 2 of 96 jurisdictions for investment attractiveness`

Source: A Preliminary Deposit Model for Lithium Brines, 2013, USGS



Lithium Brine: geological model

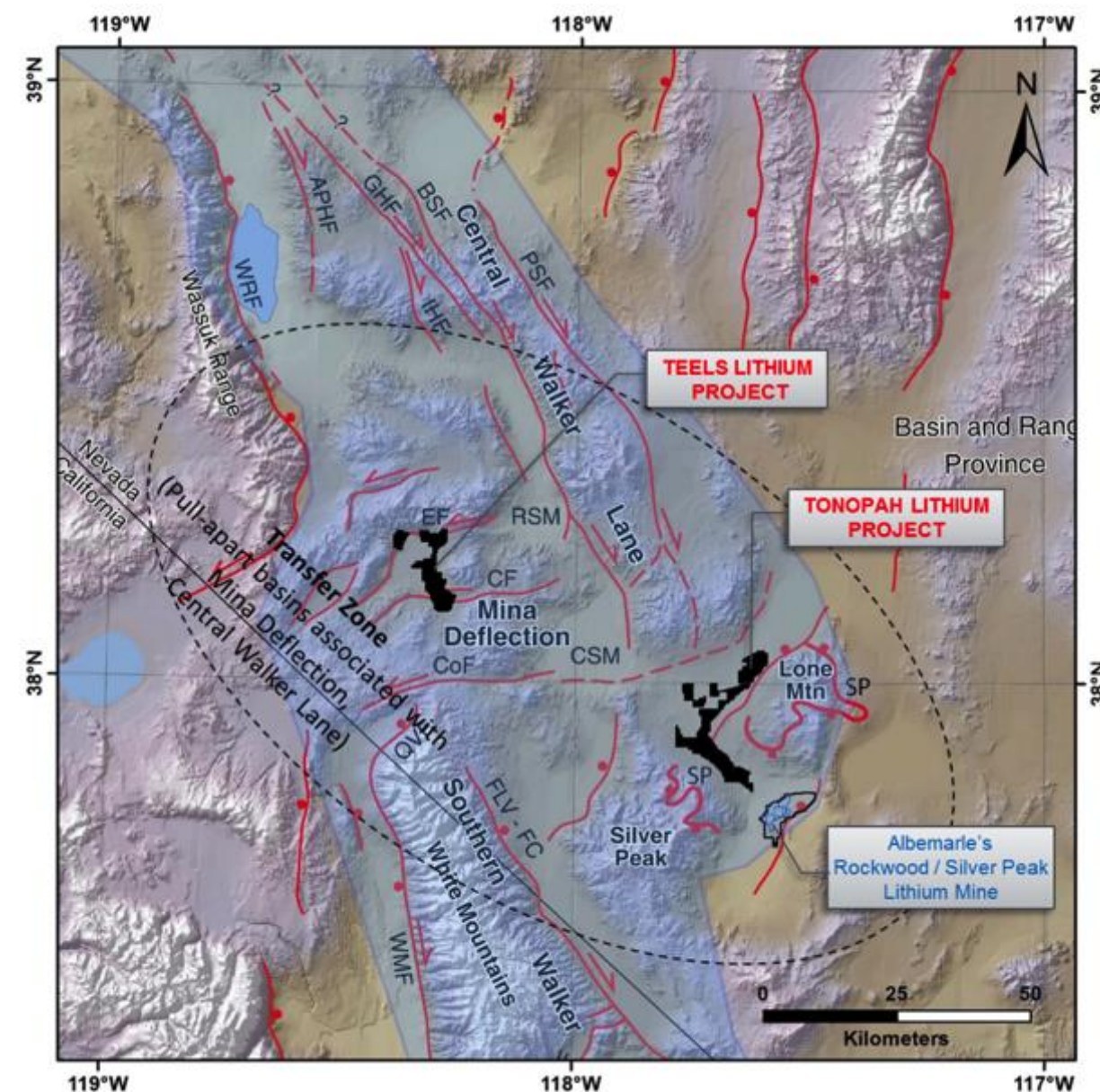


Source: A Preliminary Deposit Model for Lithium Brines, 2013, USGS



LCME Nevada Projects

- Large land positions
 - Silver Peak mine is in the same geological system:
1. **Volcanic sources** of lithium mineralisation
 2. **Tectonic activity** provides the “**plumbing**” for lithium leaching, transportation and brine concentration
 3. **Same lithium reservoir formation: Bishop Tuff is a key lithium source** at Silver Peak Mine





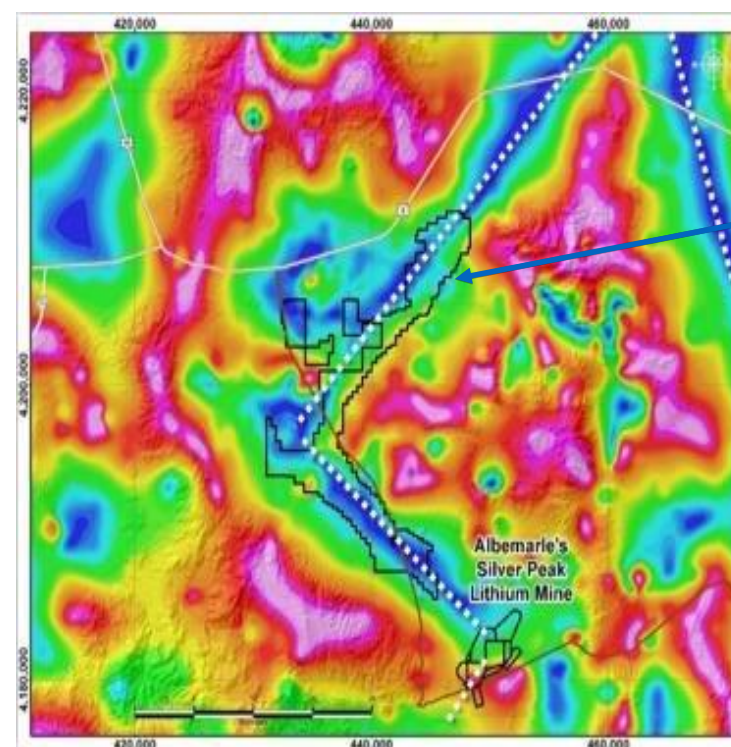
Tonopah Lithium Project





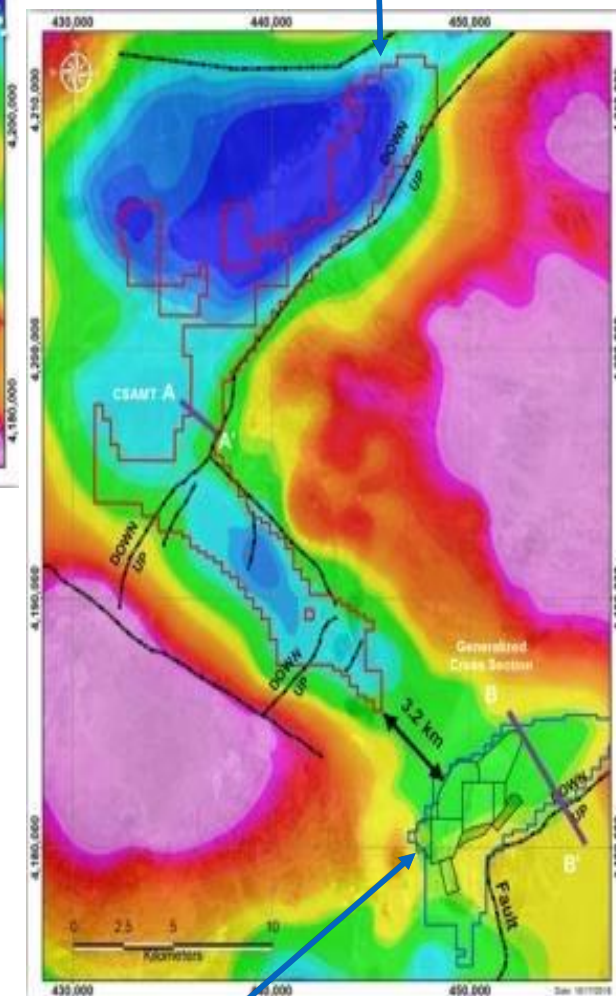
Tonopah Lithium Project

- Lithium migration channel is through the South Big Smokey Valley basin
- Tonopah Lithium Project southern border is < 2 miles (4 km) from Silver Peak mine
- Proof of lithium mineralisation:
 - Big Smokey Valley water well sampling
 - +40 years of lithium brine production at Silver Peak mine



South Big Smokey Valley basin

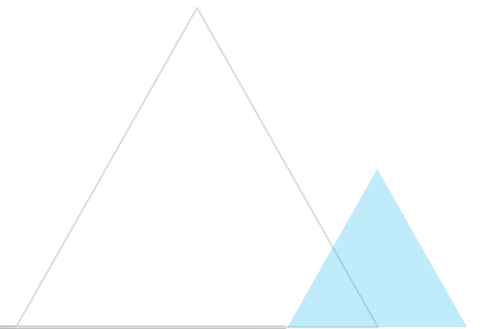
Bouguer Gravity Image (LHS) and Tilt Derivative Image (RHS) of the Big Smokey Valley showing the overall structural geometry of the basement in the Big Smokey Valley and connection to Clayton Valley



Clayton Valley basin



Teels Project

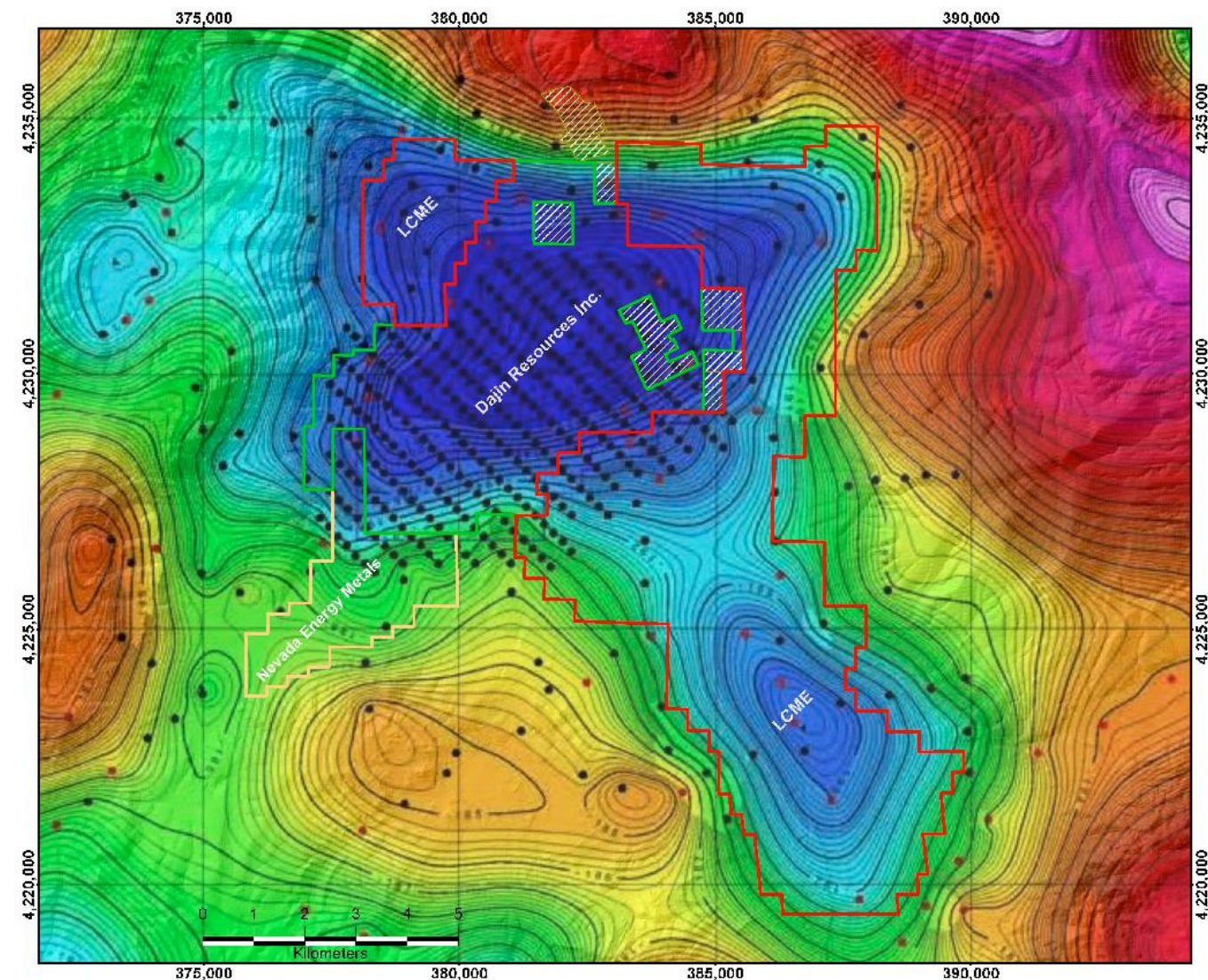




Teels Project



- Teels is located in Teels Marsh, an internally drained basin located approximately 80km NW of Silver Peak Mine
- Adjacent to U.S. Borax's historic borate mining operations
- Similar geology to Clayton Valley basin
- Claims surround a central claim block of 24km² held by Dajin Resources Corp (TSX listed company)
- Dajin has completed surface sampling and a 2D seismic survey
- Dajin Resources Corp has received drill permit for Teels (announced 23 March 2017)

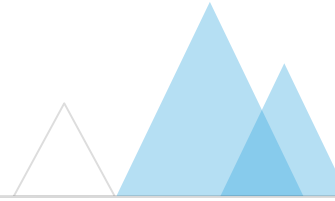


Bouguer Gravity image of Teels Marsh





Board of Directors



Jim
McKerlie

Non Executive Chairman

A senior director with many years experience on public company boards.

Current Non Executive Director of Beach Energy Ltd (and previous Chairman of Drillsearch for 8 years before its merger with Beach Energy)

Former Partner of global advisory firms (Deloitte and KPMG)
25 years of media experience.



Brian
Moller

Non Executive Director

Senior corporate partner at Hopgood Ganim with 30 years experience.

Current Chairman of AIM-listed SolGold plc and Non Executive Director of several public companies.

Admitted to practice in Queensland and Western Australia.



Vincent
Mascolo

Non Executive Director

Qualified mining engineer with extensive experience in gold and coal mining, quarrying and civil-works.

Director of various public and private companies over the past 25 years.

Current Chief Executive Officer and Managing Director of AIM-listed, IronRidge Resources Ltd.



Shanthar
Pathmanathan

Chief Executive Officer

14 years of corporate finance experience. Previous roles with Deutsche Bank's investment banking division and with Macquarie Group's investment banking division in Australia and New York.

Bachelor of Laws from the University of Western Australia.



Management team



Shanthar Pathmanathan

Chief Executive Officer

14 years of corporate finance experience. Recently with Deutsche Bank's investment banking division and previously with Macquarie Group's investment banking division in Australia and New York.
Bachelor of Laws from the University of Western Australia.



Damien Reynolds

Founder & Consultant

Over 25 years junior resources industry experience.
Led companies that have raised in excess of \$350 million for exploration and development activities globally.
Capital markets experience which spans North America, Europe and Australia.



Duncan Cornish

Chief Financial Officer and Company Secretary

Chartered Accountant with significant experience as public company CFO and Secretary, focused on junior resources companies.
Over 20 years of experience both in England and Australia, predominantly with global firms Ernst & Young and PWC.



Gordon Addie

Vice President, Exploration (North America)

Over 35 years of experience in mineral exploration and mine geology.
Co-founded Adriana Resources and has been involved in lithium exploration since 2009.



Conclusion

1. Lithium brine can provide large-scale, low cost supply
2. LCME is well positioned in Nevada (Lithium Brine rich geology)
3. Nevada is a suitable setting for developing new lithium brine processing facilities