

# DGO Gold Limited

ABN 96 124 562 849

## Shareholder Update

May 2017

# Important Information

## Forward Looking Statements

This presentation contains certain “Forward-Looking Statements” regarding future events and the future financial performance of DGO. All statements, other than statements of historical fact, included herein, including without limitation statements regarding forecast cash flows and potential mineralisation resources and reserves, exploration results and future expansion plans and development objectives of DGO Gold Limited are forward-looking statements that involve various risks and uncertainties many of which are outside the control of DGO. Any forward looking statements included in this presentation involve subjective judgement and analysis. There can be no assurance that such statements will prove to be accurate and actual results and future events could differ materially from those anticipated in such statements.

Except as required by law, no representation or warranty, express or implied, is made as to the fairness, accuracy, completeness, reliability or correctness of the information, opinions and conclusions, or as to the reasonableness of any assumption contained in this presentation. To the extent permitted by law, you release DGO Gold Limited (DGO) and its officers, employees and agents from any liability without limitation arising as a result of the reliance by you or any other person on anything contained in or omitted from this presentation.

The distribution of this presentation or information contained in it in jurisdictions outside Australia may be restricted by law and you should observe any such restrictions. The information contained in this presentation does not constitute investment, legal, accounting, regulatory, taxation or other advice and it does not take into account your investment objectives or personal situation or needs. You are solely responsible for seeking independent professional advice in relation to this presentation and any action taken on the basis of the information contained in it. No responsibility or liability is accepted by DGO or its officers, employees or agents for the information contained in this presentation or any action you take on the basis of this presentation.

# Corporate Structure

Share Capital	
Total Shares on Issue before rights issue	5,797,268

Director	Position	Expertise
Eduard Eshuys	Executive Chairman	Geology
Michael Ilett	Director and Company Secretary	Finance and Corporate Governance
Ross Hutton	Non Executive Director	Mining Engineering

Top 5 Substantial Shareholders	Percentage Holding
Cairnglen Investments Pty Ltd	19.95%
Lion Nominees Pty Ltd	19.37%
Eduard Eshuys (including associates)	14.89%
Ross Hutton (including associates)	8.96%
Scintilla Strategic Investments Ltd	5.17%
<b>Holdings by top 5 Substantial Shareholders</b>	<b>68.34%</b>

# Greenfield Exploration Strategy

- DGO has implemented its greenfield exploration strategy of using sediment hosted gold deposit (SHGD) analogues of world class gold deposits and the peak ages of gold deposition to target Australian sedimentary basins.
- Focus broadened to explore for Central African Copper Belt style Cu-Co mineralisation in Yerrida Basin (WA) and Adelaide Fold Belt/Stuart Shelf (SA).
- Sediment hosted exploration strategy supported by the research conducted over the past decade at CODES at the University of Tasmania.

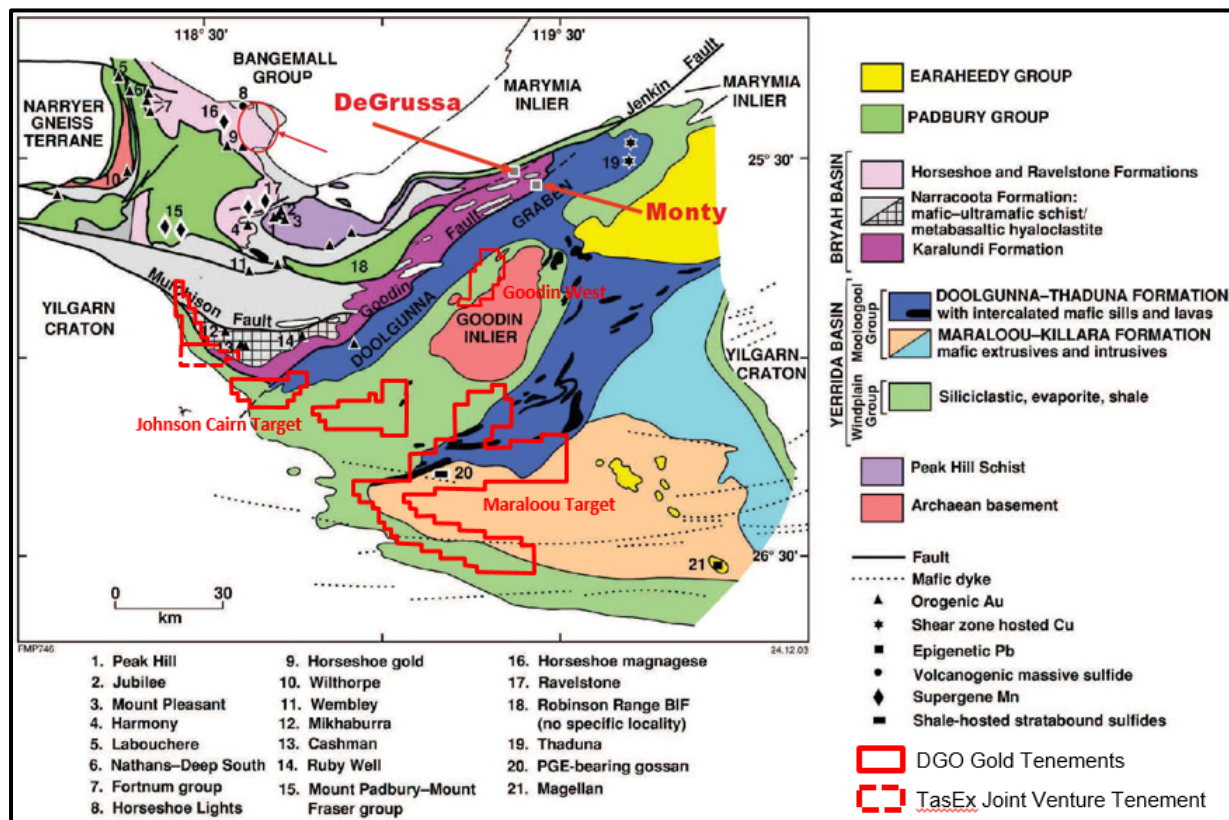


# Yerrida Basin, WA

Nine granted exploration licenses, one exploration licence application, cover an area of 1,655km<sup>2</sup> 100km north of Meekatharra in Western Australia.

DGO land covers rocks of the "right" age for the occurrence of sediment hosted gold mineralisation and prospective for Central African Copper Belt Cu-Co mineralisation.

Divided in to the Johnson Cairn Target, Maralooou Target and Goodin West.



# Maraloou Target – Cu-Co Prospectivity

Historic exploration within the Yerrida Basin by Renison Limited has identified cobalt mineralisation with up to 0.64% Co in rock chips within the Maraloou Formation.

Drilling by Australian Consolidated Minerals in 1983 returned up to 80m at 0.77% Co from 170m in the same stratigraphic position as covered by DGO's southern Maraloou Target tenements 40km to the west.

Recent follow up drilling by Riva Resources has intersected the altered and brecciated target horizon with a potential mineralised zone 110m wide.

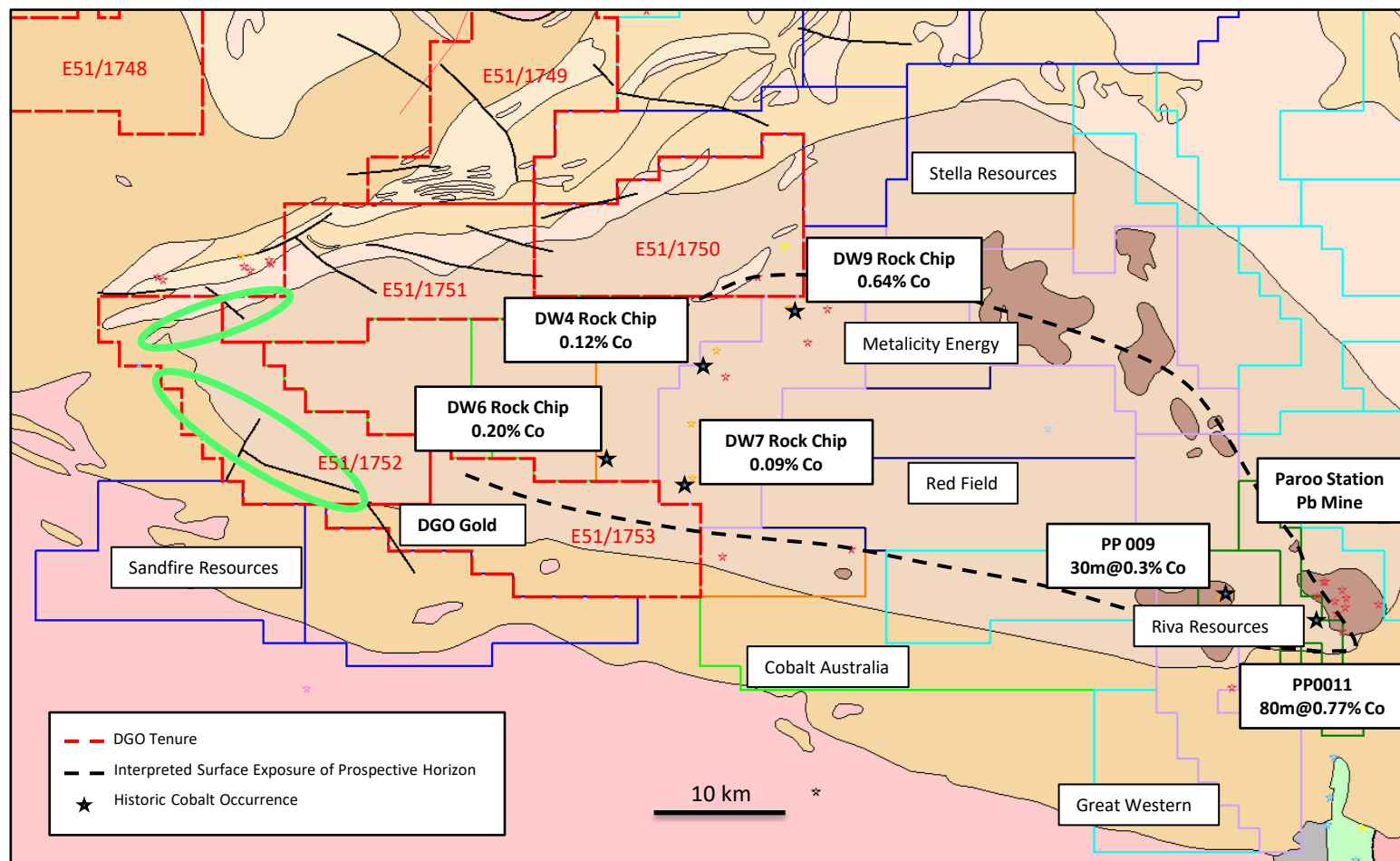
Broad parallels have been drawn to the Central African Copper Belt style mineralisation by the Company's expert consultants.

Maraloou Target tenements cover the important basal contact of the Maraloou Formation. This formation has stratigraphic and lithological similarities with the host sequence at Monty / DeGrussa to the north.

# Maraloou Target – Cu-Co Prospectivity

Cobalt prospective horizon extends in to south east and north east portions of DGO tenements.

Geophysical data review has identified two VHMS target areas coincident with moderate copper anomalism towards the base of the Maraloou Formation (green).



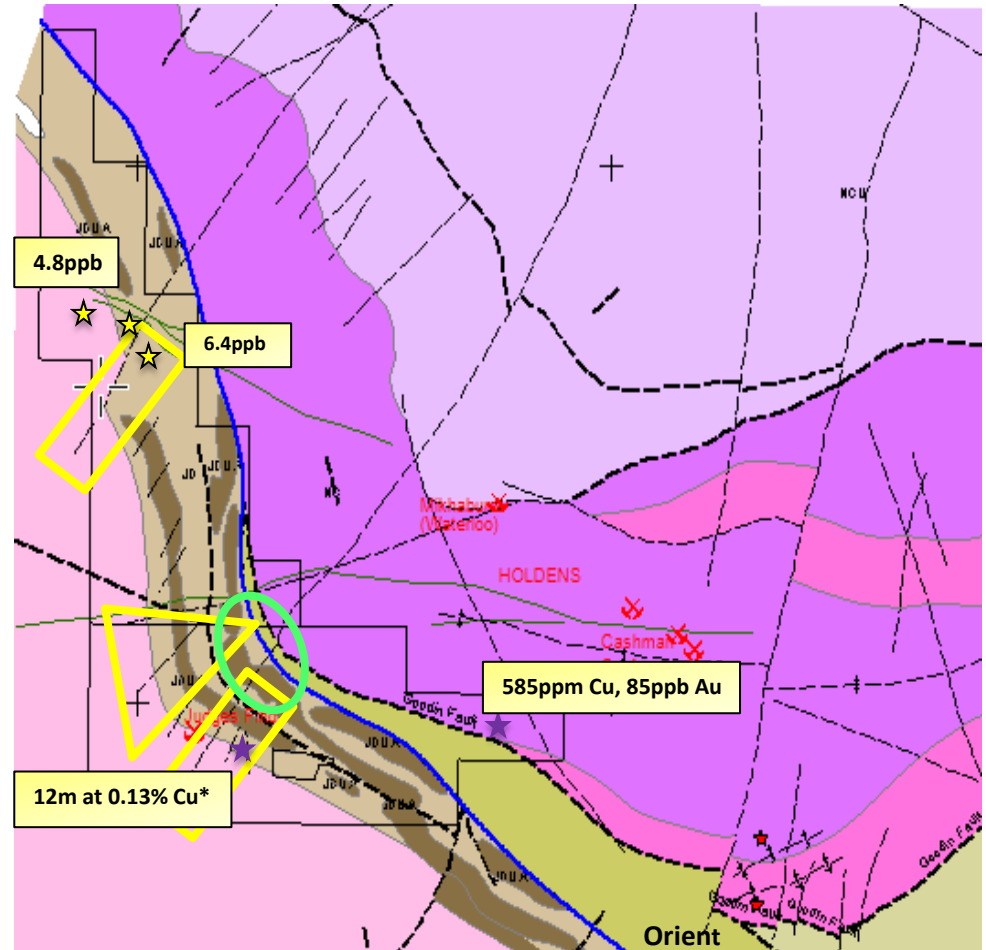
# Johnson Cairn Target

Tenure covers the south western extension of the Monty / Borg/Bono stratigraphy, the "right" age for sediment hosted gold mineralisation.

Review of geophysical data by DGO's consultant Barry Bourne combined with previous exploration data has identified target zones.

Sediment hosted gold targets (yellow) associated with major NE trending structures and anomalous gold values / nuggets.

VHMS target shown as green.





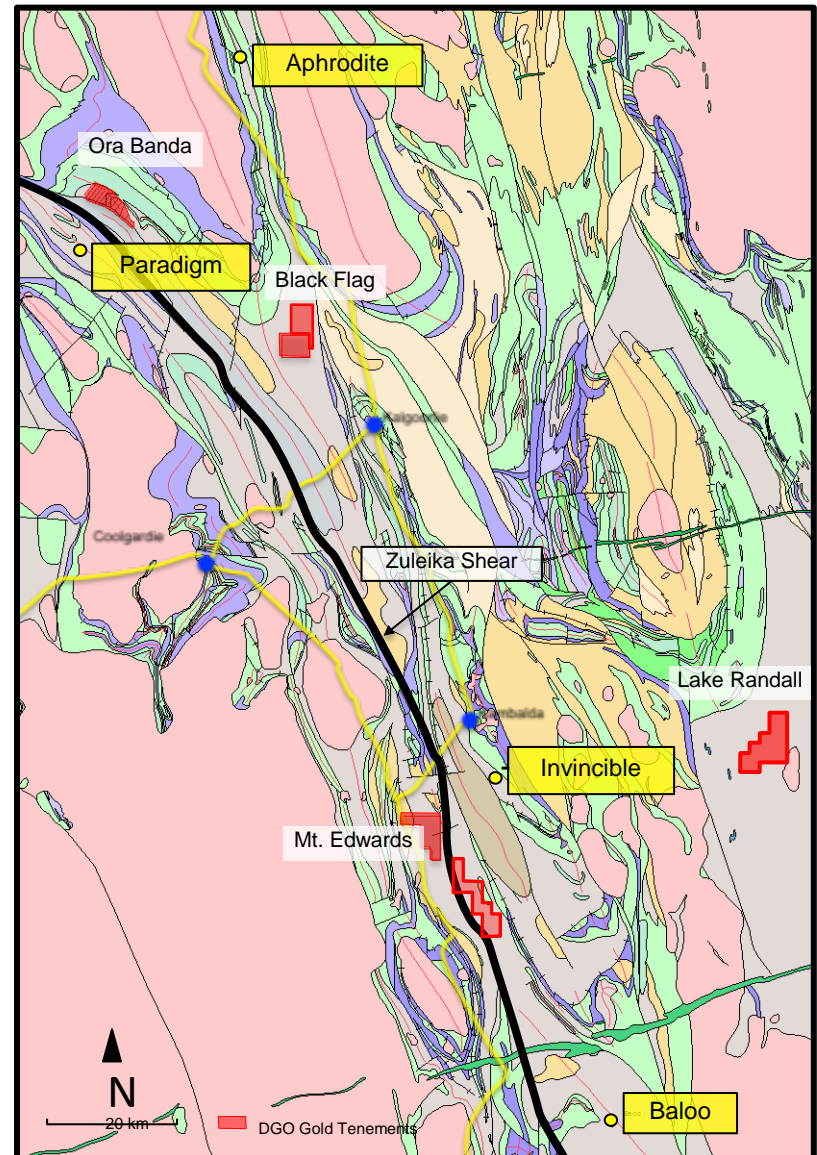
# Eastern Goldfields, WA - Black Flag Beds

Favourable geologic age identified from research by CODES at UTAS, with recent discoveries confirming the prospectivity.

DGO has secured four groups of tenements covering Black Flag Beds at Ora Banda, Black Flag, Mt Edwards and Lake Randall (JV) in the Eastern Goldfields of WA.

Analysis of past exploration has identified gold in shallow drilling with no significant deeper drilling.

Limited follow up RC drilling completed at Black Flag and a co-funded drilling program planned for Ora Banda.



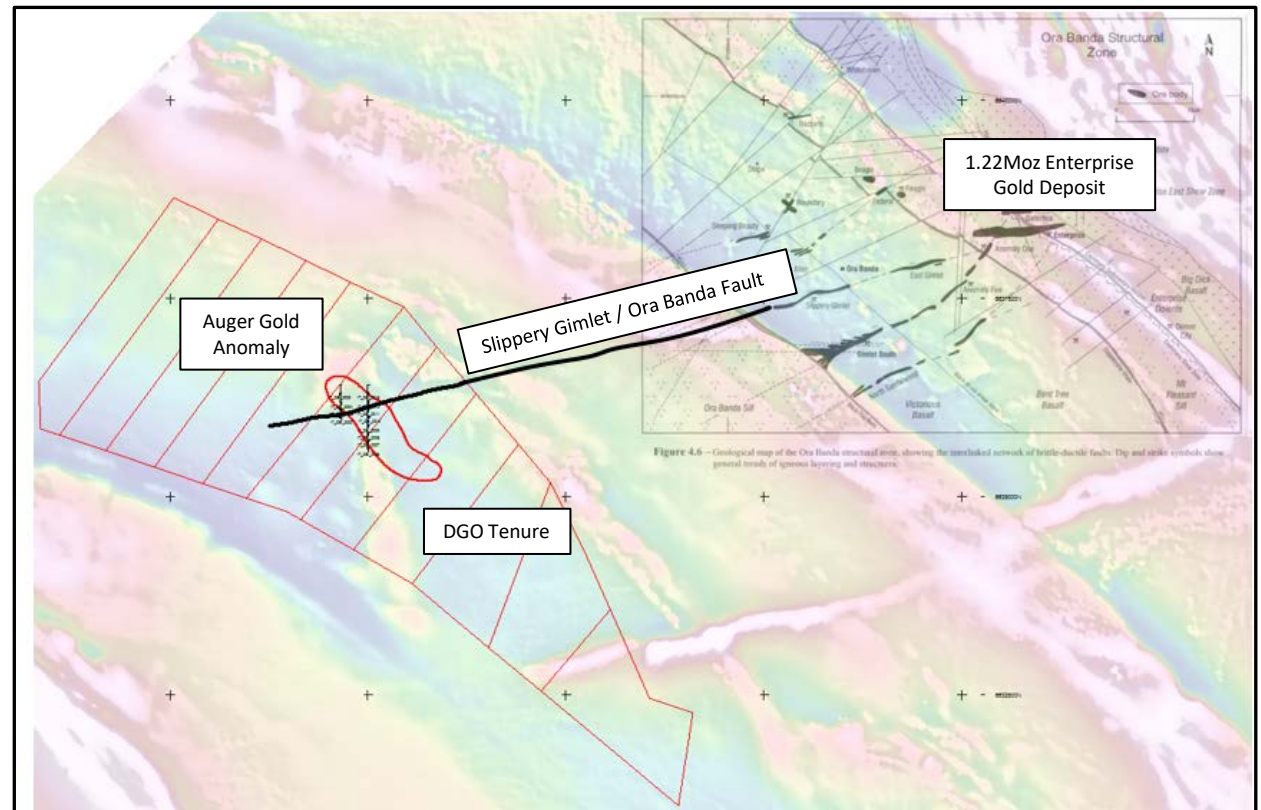
# Ora Banda

Ora Banda tenure overlies Black Flag Beds adjacent to the highly prospective Zuleika Shear.

Review of geophysical and past exploration data has identified an auger gold anomaly associated with a sequence of the Orinda Sill faulted by structures with the same orientation as the Slippery Gimlet / Ora Banda Fault.

Tenements covered by shallow surficial recent sediments and have been subjected to limited previous exploration.

These tenement are well located in relation to intense exploration activity in the Zuleika Shear region by companies such as Northern Star Resources Limited.



# Lake Randall JV

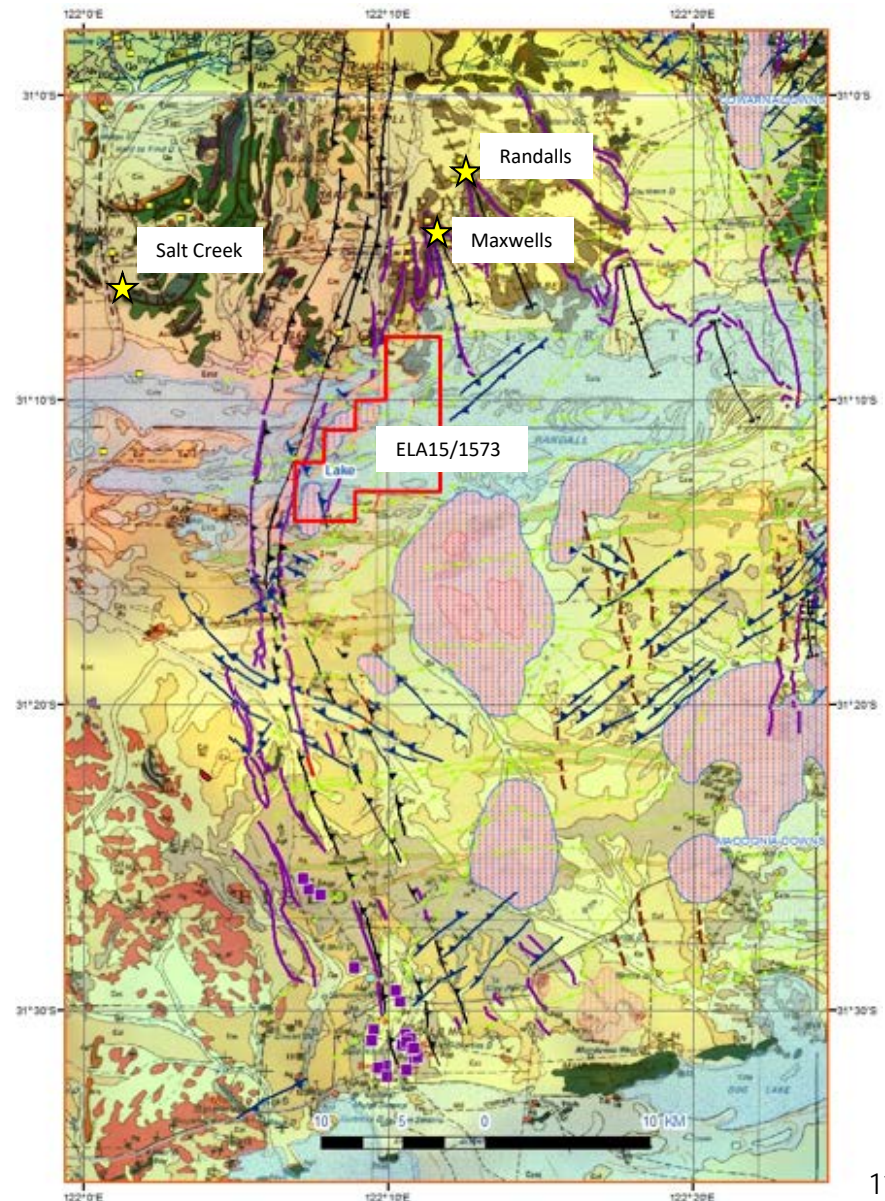
Joint venture over an exploration licence application located 80km SE of Kalgoorlie and about 10km SSW of the Randalls Gold Mine.

Shallow cover of gypsum dunes, sand and salt lake sediments overlying meta sediments.

Short low displacement NW – SE faults and small buried granites in a high strain zone within the tenement proximal to a major bend in regional scale strike slip faults to the west.

No historic drilling due to shallow cover masking surface geochemistry and restricting an understanding of the geology.

Located along strike to the south from Maxwells – Randalls Gold Mining Centre and to the south east of the Salt Creek Deposit.





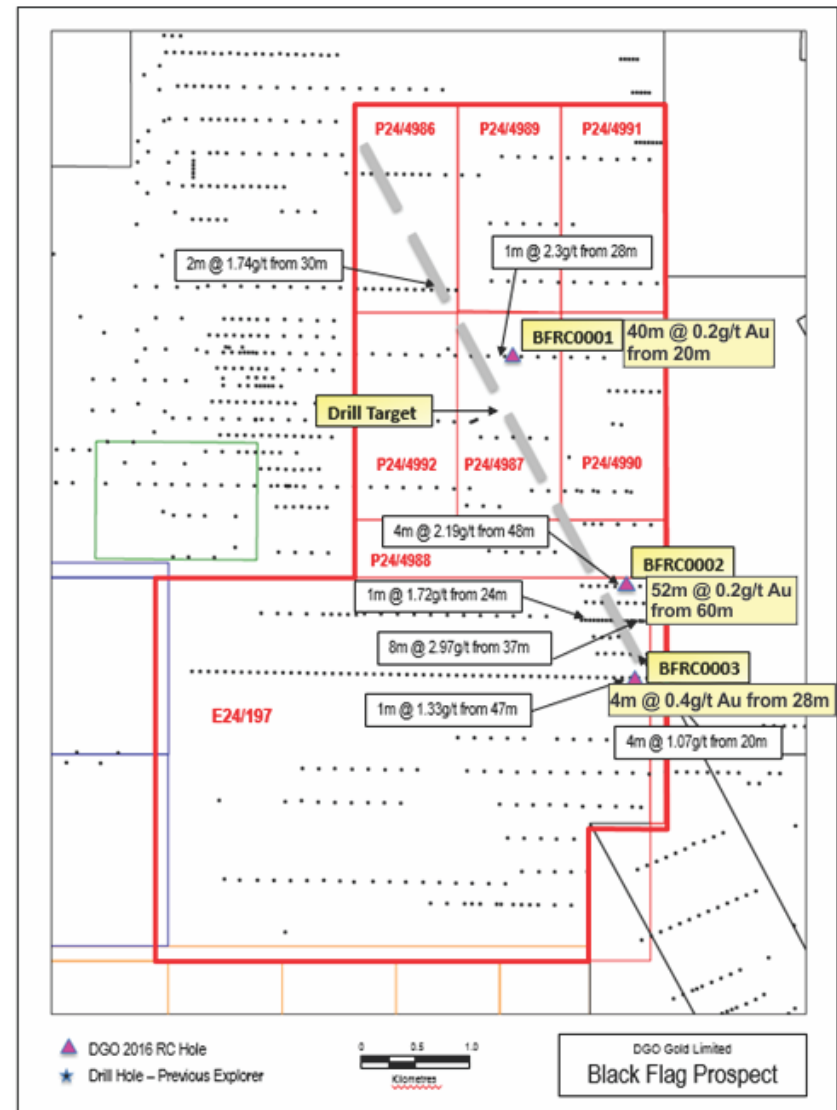
# Black Flag

Limited drilling by DGO was designed to test portions of a +3.0km long gold-in-saprolite anomaly within Black Flag Group sediments.

Anomaly defined from the review of shallow drilling by previous explorers at the Black Flag tenements 30km NW of Kalgoorlie.

Three RC holes were completed for 438m returning broad shallow interesting gold zones of up to 52m at 0.2g/t Au.

Review of available geophysical data is underway to assist in targeting for future drilling in an area of wide spread gold anomalism.



# Cobalt, South Australia

Cobalt prospective target areas identified on the Stuart Shelf and the Adelaide Fold Belt utilizing research from CODES at UTAS.

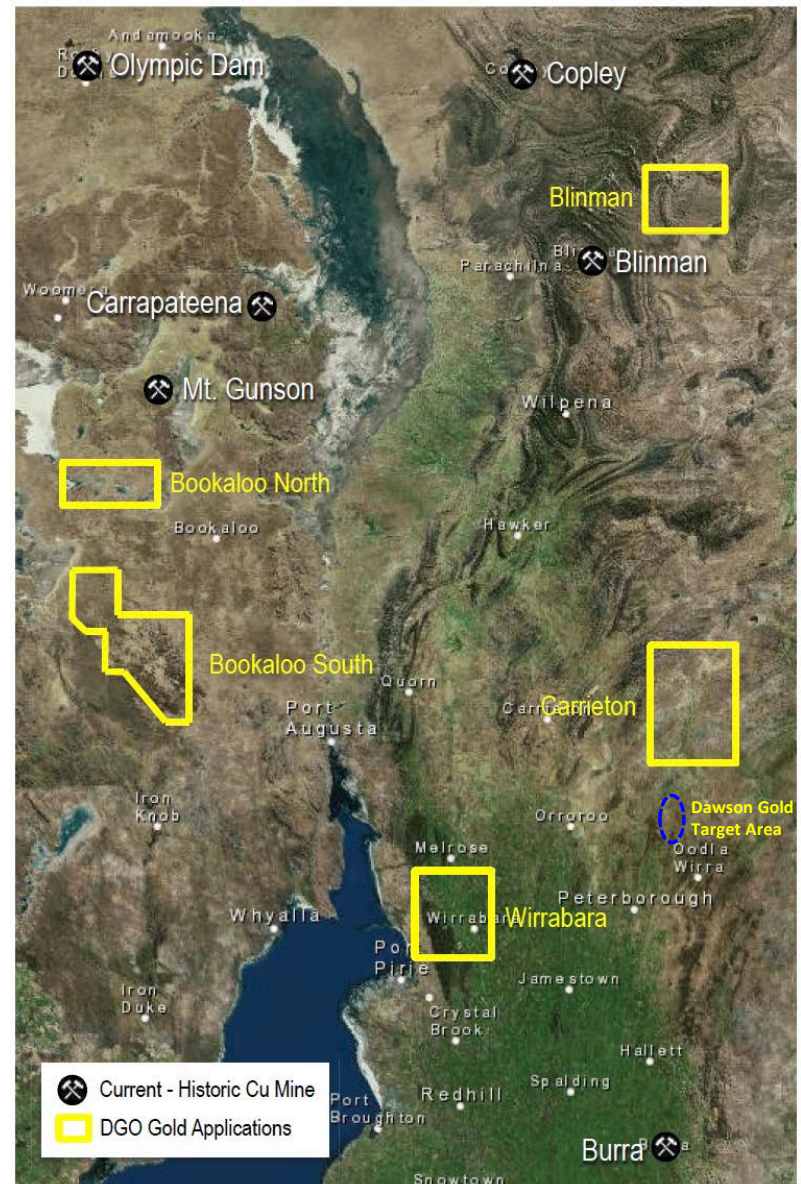
The organic rich black shale of the Tapley Hill Formation correlates with the CODES Central African Copper Belt style model.

Five exploration licence applications covering an area of 3,622km<sup>2</sup> have been lodged.

All applications contain outcrop or interpreted extensions of Tapley Hill Formation.

Mt Gunson – 30 to 45km north of Bookaloo North – hosts 20.8Mt at 1.0% Cu and 0.05% Co (Gindalbie Metals JV 17/03/17).

Review of open file data and relogging of previous core holes is to be carried out.





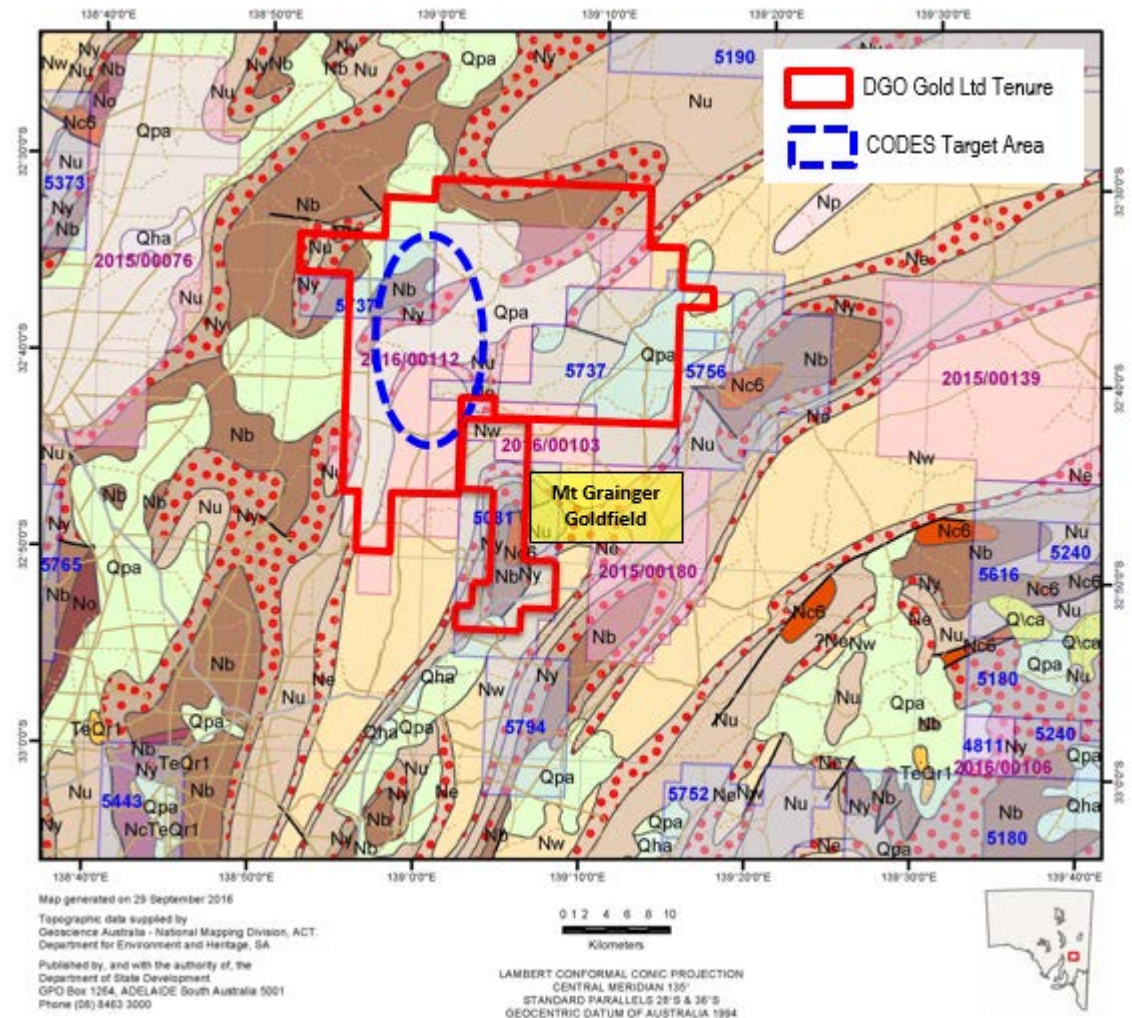
# Dawson – South Australia

CODES target based on broad anticlinal fold in Yerelina Group and Wilpena Group sediments evident in the regional magnetics.

Mt Grainger goldfield largely covered by new DGO exploration licence application.

Gold mineralisation at Mt Grainger hosted in Yerelina and Yudnamutana sediments on western limb near nose of anticlinal fold.

Disruption evident in the magnetics in the area likely to be a large fault that could have acted as a fluid conduit.



# March Quarter 2017 Highlights

- **Drill target identified** at Ora Banda with extension of the regionally significant Slippery Gimlet / Ora Banda Fault coincident with an auger gold anomaly.
- **South Australian cobalt strategy** focused on the **prospective Tapley Hill Formation** which correlates with the Central African Copper Belt mineralisation model developed by CODES in the Adelaide Fold belt and Stuart Shelf.
- **Cobalt prospective horizon at Yerrida – Maraloou Target** – interpreted to extend from area being drill tested by Riva Resources Limited (ASX: RIR) 40km to the east of DGO's Yerrida tenements.
- The Company now holds tenure (under joint venture, application or grant) covering 7,044km<sup>2</sup> across Western Australia, in the Eastern Goldfields, Yerrida Basin and the Pilbara, and in South Australia in the Adelaide Fold belt and Stuart Shelf.

# Summary

- Excellent research by UTAS over the past decade has led to clear identification of peak geologic times for gold deposits to form.
- DGO Gold is leveraging off this research using sediment hosted gold deposit analogues to target Australian sedimentary basins within these peak geologic times.
- Strategy has expanded to explore for Central African Copper Belt Cu-Co deposits in conjunction with DGO's research consultants from UTAS.
- Drill target identified at Ora Banda.
- A substantial portfolio of tenements (7,044km<sup>2</sup>) has been established in Western Australia and South Australia.
- Purpose of the capital raising is to continue funding of the research related to sediment hosted gold, copper and cobalt mineralisation in Australia and proof of the concept drilling.