

08 June 2017



Global Petroleum Limited
("Global" or "the Company")

Seismic survey

Global Petroleum (AIM: GBP, ASX: GBP) is pleased to announce that it has entered into a contract with Seabird Exploration of Norway in order to acquire 834 km of full fold 2D seismic data covering Global's operated block (PEL 0029) in Namibia.

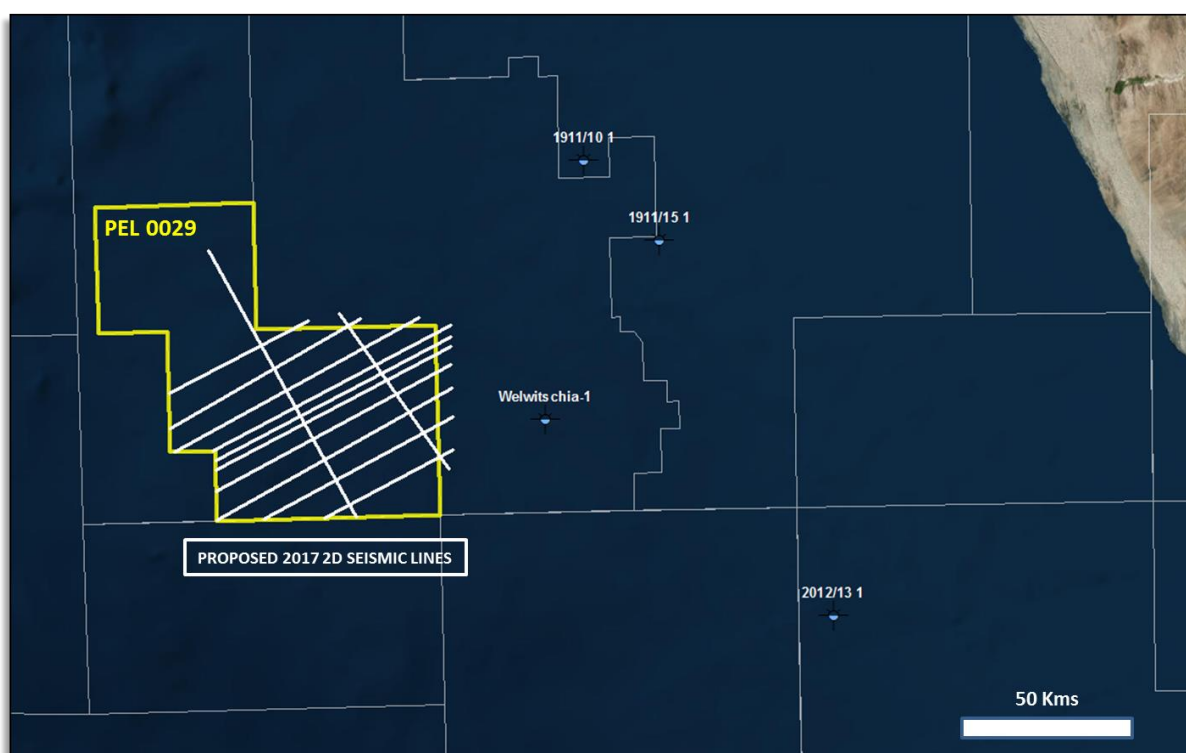


Figure 1: 834km area of full fold 2D seismic data over Global Petroleum's operated block (PEL 0029) in Namibia

The survey has been designed as an infill programme with the aim of providing better delineation of an extremely large, multi-level, dip closed prospect - Gemsbok - which has been mapped in the south eastern portion of the Global acreage.

The new 2D survey is expected significantly to clarify the nature and extent of Gemsbok. In addition, the survey has been specifically designed to improve resolution of the deeper syn-rift section adjacent to the Gemsbok structure, as well as to provide a more accurate understanding of the deeper sedimentary sequence where it is believed potential source rocks are likely to be present.

It is expected that the survey will commence towards the end of June/early July and take approximately 2 weeks to complete.

Global Petroleum's technical team is both intrigued and highly encouraged by its recent work which has confirmed the Gemsbok prospect, a structural closure extending over 200 square kms. It is

unusual to identify such a large, robust structure at prospective depths which does not rely on stratigraphic trapping.

For further information please visit www.globalpetroleum.com.au or contact:

Global Petroleum Limited

Peter Hill, Managing Director & CEO

+44 (0) 20 7495 6802

Damien Cronin, Company Secretary

+61 (0) 7 3310 8732

Cantor Fitzgerald Europe (Nominated Adviser & Joint Broker)

Sarah Wharry / Craig Francis

+44 (0) 20 7894 7000

GMP FirstEnergy Capital LLP (Joint Broker)

Hugh Sanderson

+44 (0) 20 7448 0200

Tavistock (Financial PR & IR)

Simon Hudson / Niall Walsh

+44 (0) 20 7920 3150