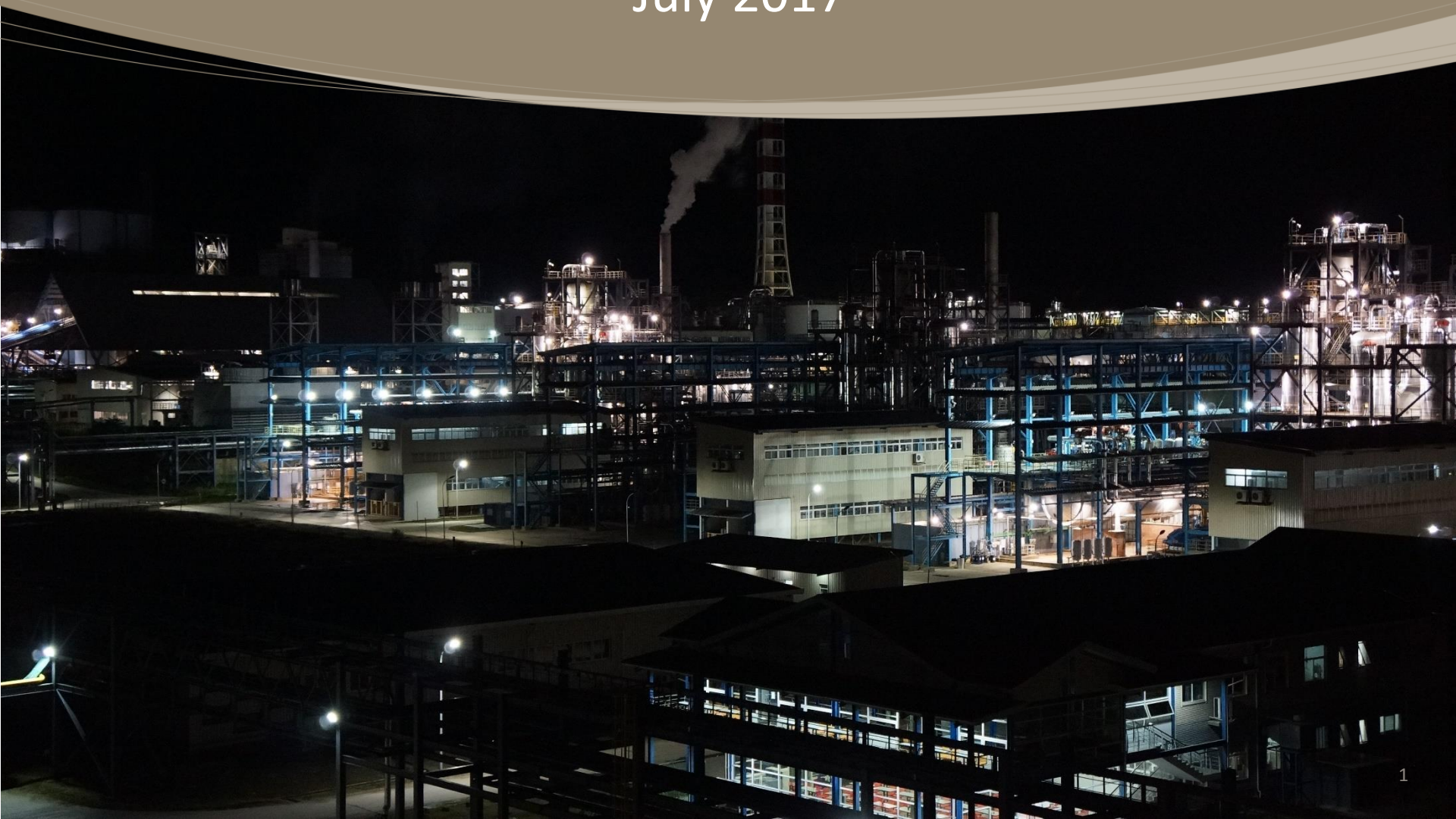




Noosa Mining Conference July 2017



This presentation has been prepared by Highlands Pacific Limited (“Company”). The material contained in this presentation is for information purposes only. This presentation is not an offer or invitation for subscription or purchase of, or a recommendation in relation to, securities in the Company and neither this presentation nor anything contained in it shall form the basis of any contract or commitment. This presentation is not financial product or investment advice. It does not take into account the investment objectives, financial situation and particular needs of any investor. Before making an investment in the Company, an investor or prospective investor should read this document in its entirety, consider whether such an investment is appropriate to their particular investment needs, objectives and financial circumstances, seek legal and taxation advice appropriate to their jurisdiction and consult a financial adviser if necessary. The Company is not licensed to provide financial product advice in respect of the Company’s securities.

This presentation may contain forward-looking statements that are subject to risk factors associated with exploring for, developing, mining, processing and sale of commodities. Forward-looking statements include those containing such words as anticipate, estimates, forecasts, should, will, expects, plans or similar expressions. Such forward-looking statements are not guarantees of future performance and involve known and unknown risks, uncertainties, assumptions and other important factors, many of which are beyond the control of the Company. It is believed that the expectations reflected in these statements are reasonable but they may be affected by a range of variables and changes in underlying assumptions which could cause actual results or trends to differ materially. Nothing in this document is a promise or representation as to the future. Actual results may vary from the information in this presentation and any variation may be material. Past performance is not an indication of future performance. Statements or assumptions in this presentation as to future matters may prove to be incorrect and any differences may be material. The Company does not make any representation or warranty as to the accuracy of such statements or assumptions. Investors are cautioned not to place undue reliance on such statements.

This presentation has been prepared by the Company based on information available to it and has not been independently verified. No representation or warranty, express or implied, is made as to the fairness, accuracy, completeness or correctness of the information, opinions and conclusions contained in this presentation. To the maximum extent permitted by law, none of the Company or its subsidiaries or affiliates or the Directors, employees, agents, representatives or advisers of any such party, nor any other person accepts any liability for any loss arising from the use of this presentation or its contents or otherwise arising in connection with it, including without limitation, any liability arising from fault or negligence on the part of the Company or its subsidiaries or affiliates or the Directors, employees, agents, representatives or advisers of any such party.

The Company estimates its reserves and resources in accordance with the Australian Code for Reporting of Identified Mineral Resources and Ore Reserves 2012 Edition (“JORC Code”), which governs such disclosures by companies listed on the Australian Securities Exchange.

Established player in PNG





- World class copper, gold and nickel projects
 - **RAMU nickel-cobalt mine - in production**
 - **FRIEDA RIVER copper-gold project - being permitted**
 - **STAR MOUNTAINS copper-gold project - exploration drilling**
 - **SEWA BAY nickel laterite - exploration**
- +20 years operating history in PNG makes Highlands an ideal project partner
- Past involvement in the Porgera Gold Mine, Kainantu Gold Mine and various exploration sites in PNG



Capital Structure

Shares on issue	936m
Share price	A\$0.059
Market capitalisation	A\$55m
Cash (June 2017)	A\$10.5m

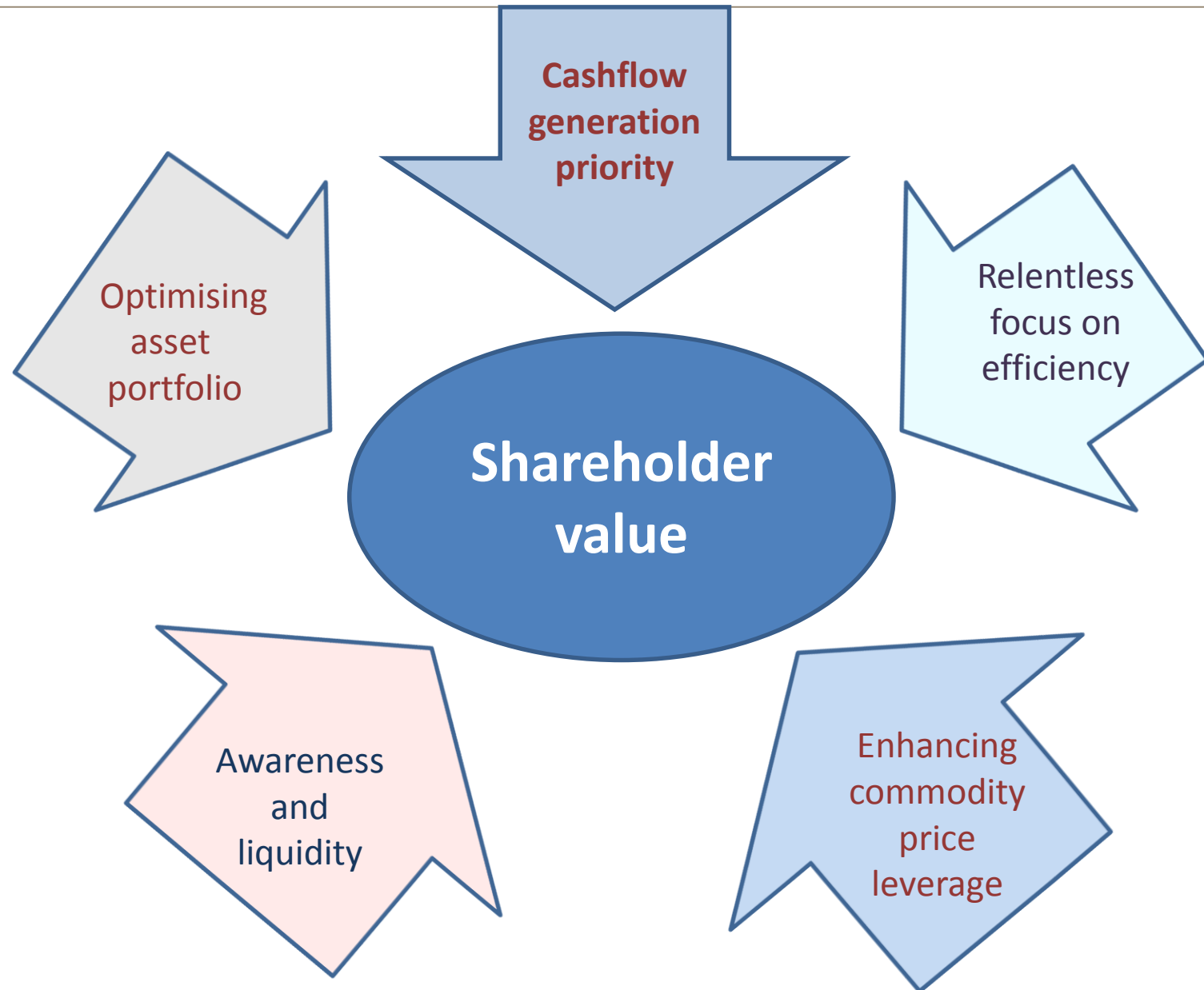
Major shareholders

 TRAFIGURA	15.9%	▪ Global commodities trader
	  GRAM	13.9%
		▪ Chinese State-owned minerals producer based in Guangzhou
		▪ JV partner at Frieda River
PNGSDP	11.5%	▪ Long association with PNG

2017 – start of a new era



- **Corporate review conducted 2016**
- **Efficiency measures implemented**
- **Board renewal process**
- **New Chairman and CEO appointed**
- **Asset review undertaken**
- **Strategy priorities refined**

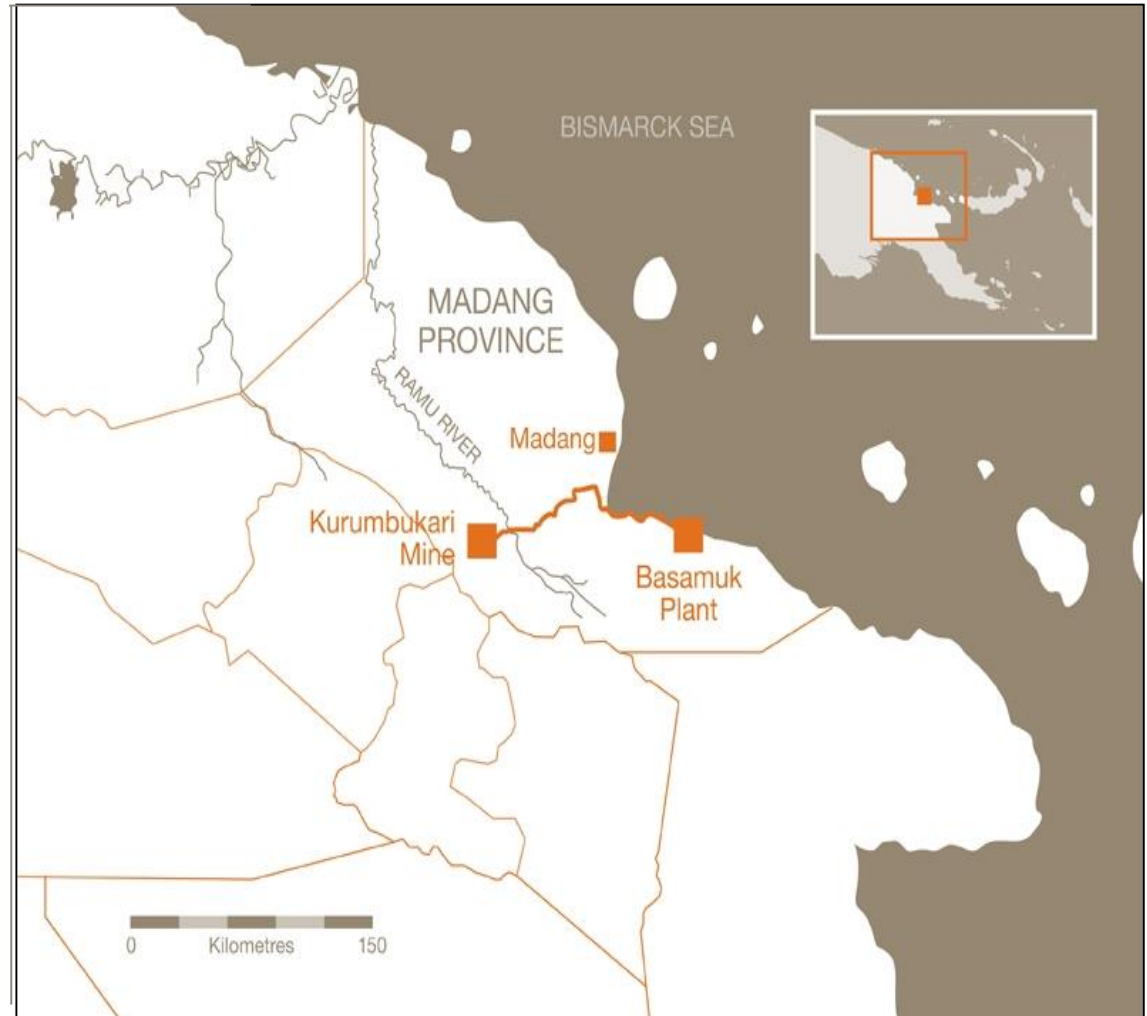


RAMU



Ramu Nickel – PNG success story

- Joint venture –
Highlands 8.56%, MCC
Ramu 85%, PNG Govt
and landowners 6.44%
- \$2.1 billion capex
- Annual production
capacity 32,600t Ni,
3300t Co
- Mine at Karumbukari.
135km slurry pipeline to
Basamuk port
- Construction 2008,
commissioning 2012
- Achieving record
production rates

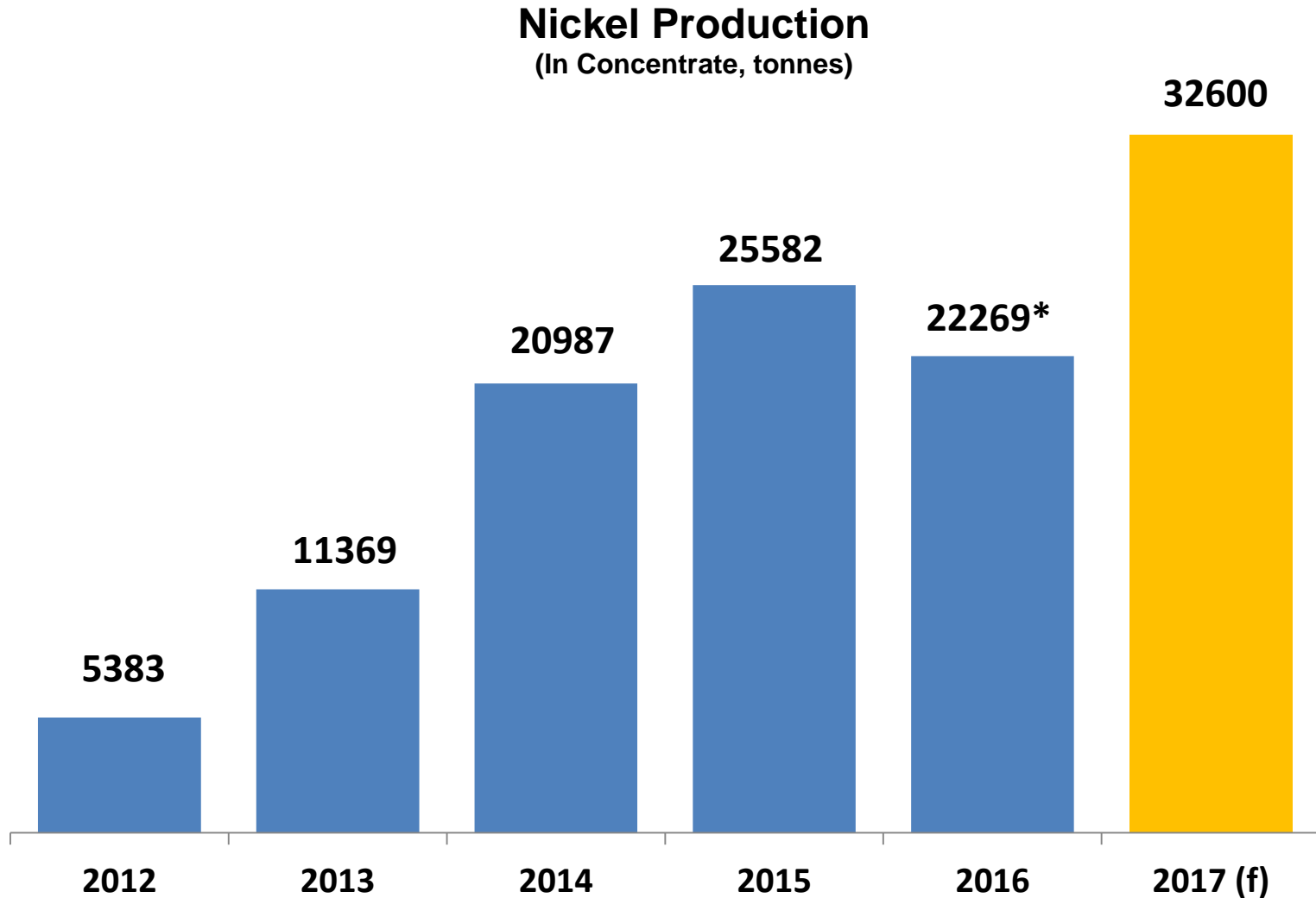


Ramu – A PNG success story

- **Resource: 124 Mt @ 1.0% Ni and 0.1% Co**
- **Reserve: 49 Mt @ 1.0% Ni and 0.1% Co**
- **Resource/reserve growth to deliver mine life of +35 years**
- **Mining: Open pit, free digging**
- **Strip Ratio: Low 0.28:1**



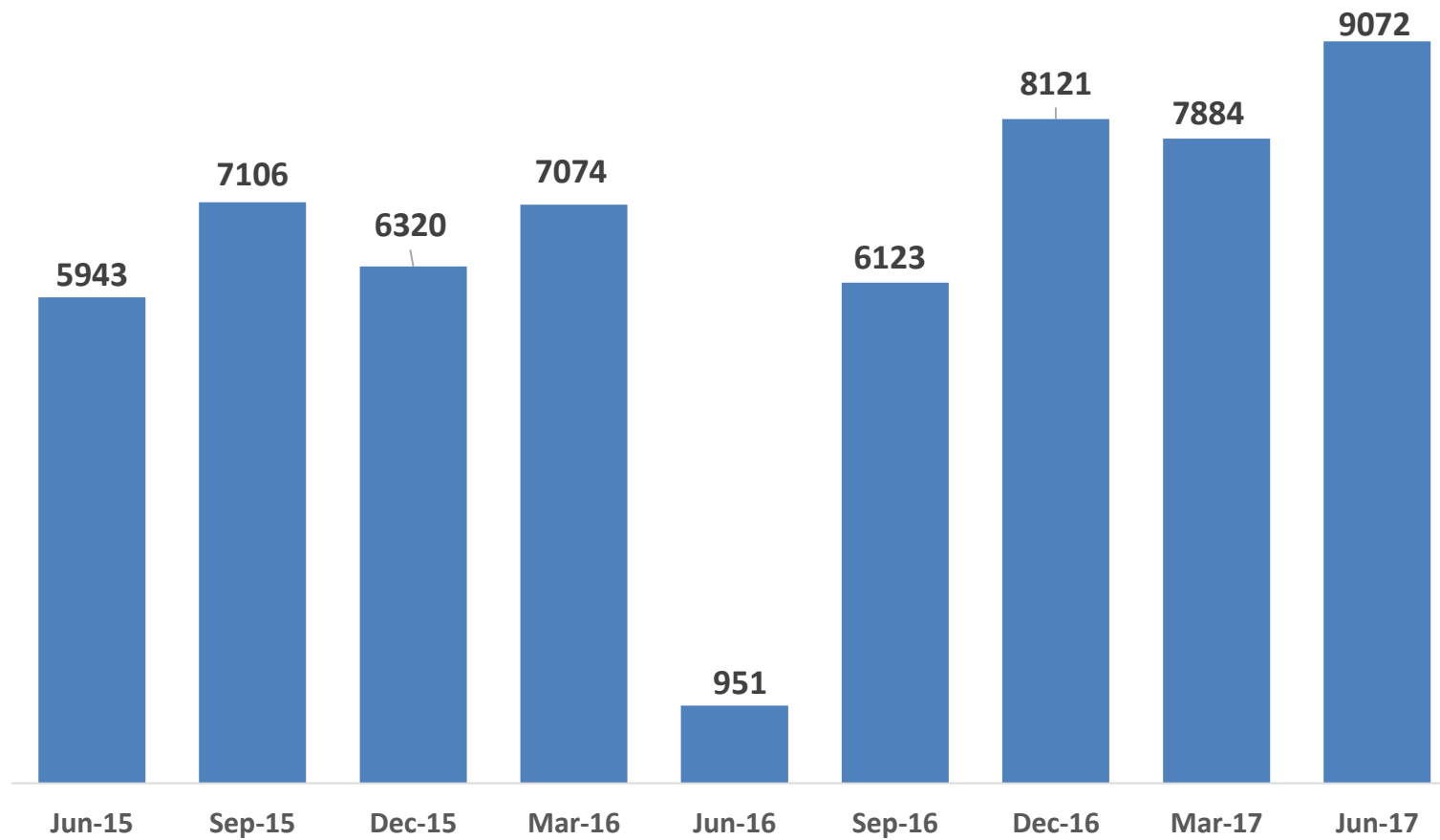
Record production forecast 2017



*2016 production affected by plant shutdown

Achieving record production rates

Nickel Production (In Concentrate, tonnes)



*June and Sept 2016 production affected by plant shutdown

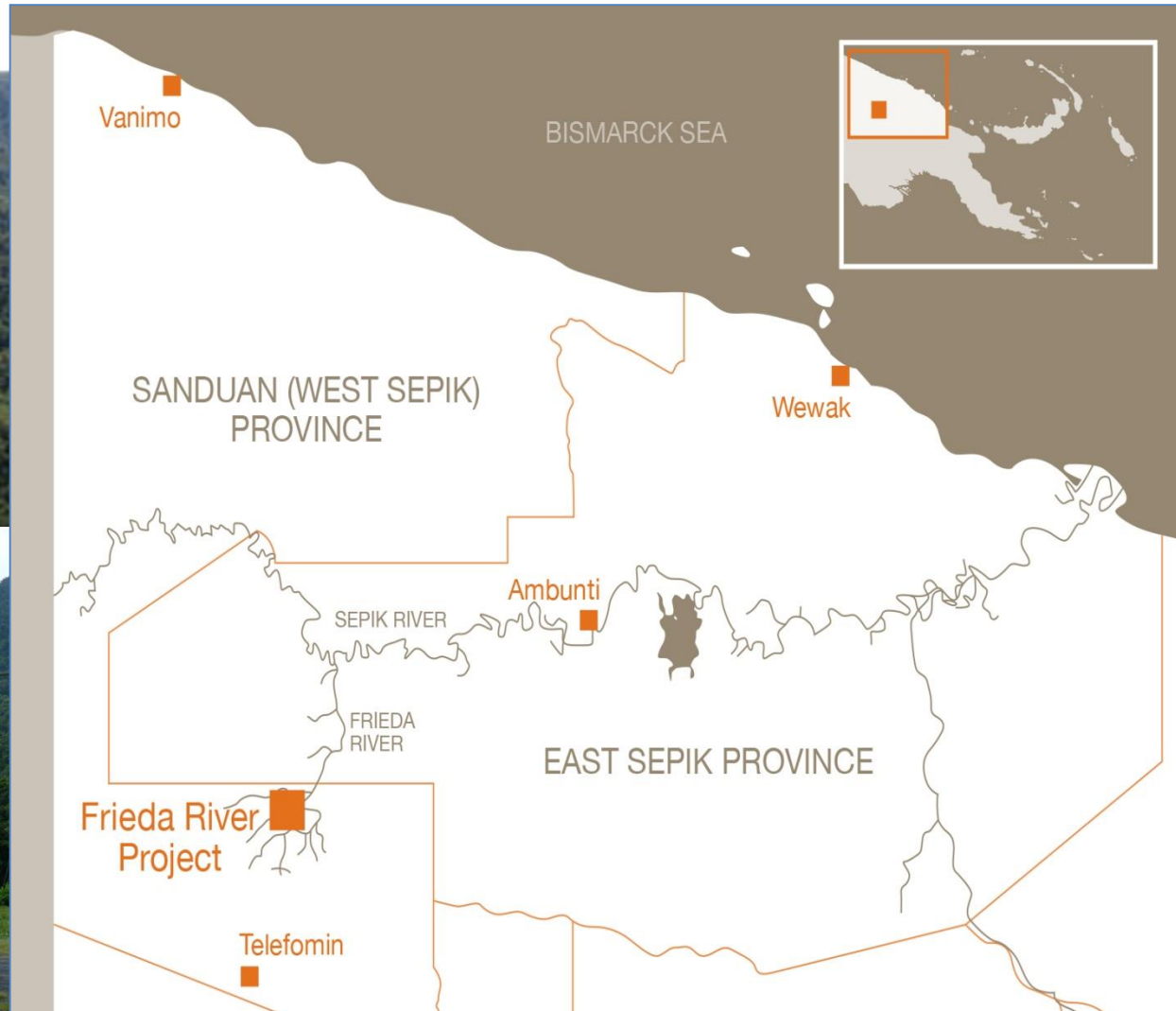
Social license to operate



FRIEDA RIVER



Remote location on Sepik River



Progressing through permitting

- **Special Mining Lease application lodged with MRA June 2016**
- **EIS lodged with CEPA Dec 2016**
- **Addendum released March 2017 with enhanced economics**
- **Potential production 2024/25**
- **Funding challenges being addressed**
- **Exploring potential asset value realization options**



Potentially attractive returns

- **Joint venture.
GRAM/PanAust 80%,
Highlands 20%.**
- **Project managed by
GRAM/PanAust**
- **Multi-stage development
approach.**
- **Large scale, open pit
mining.**
- **Conventional process
plant**

Processing rate	40 Mtpa (av). 700 Mt total at 0.5% Cu and 0.29 g/t Au
Av annual Cu production	175,000 tonnes
Av annual Au production	250,000 ounces
C1 cash cost **	US\$0.69/lb Cu
All In Sustaining Cost	US\$1.23/lb Cu
Pre-production capex *	US\$3.6 billion
Development and sustaining capital over LOM	US\$2.3 billion
Mine Life	Initial 17 years

*Excluding mining fleet and power plant

**Brook Hunt convention for the reporting of direct cash costs comprising: mine site, product transportation and freight, treatment and refining charges and marketing costs; based on payable metal content. Assumes Cu price of US\$3.30/lb, Au price of US\$1455/oz, Ag price of US\$23/oz..

STAR MOUNTAINS

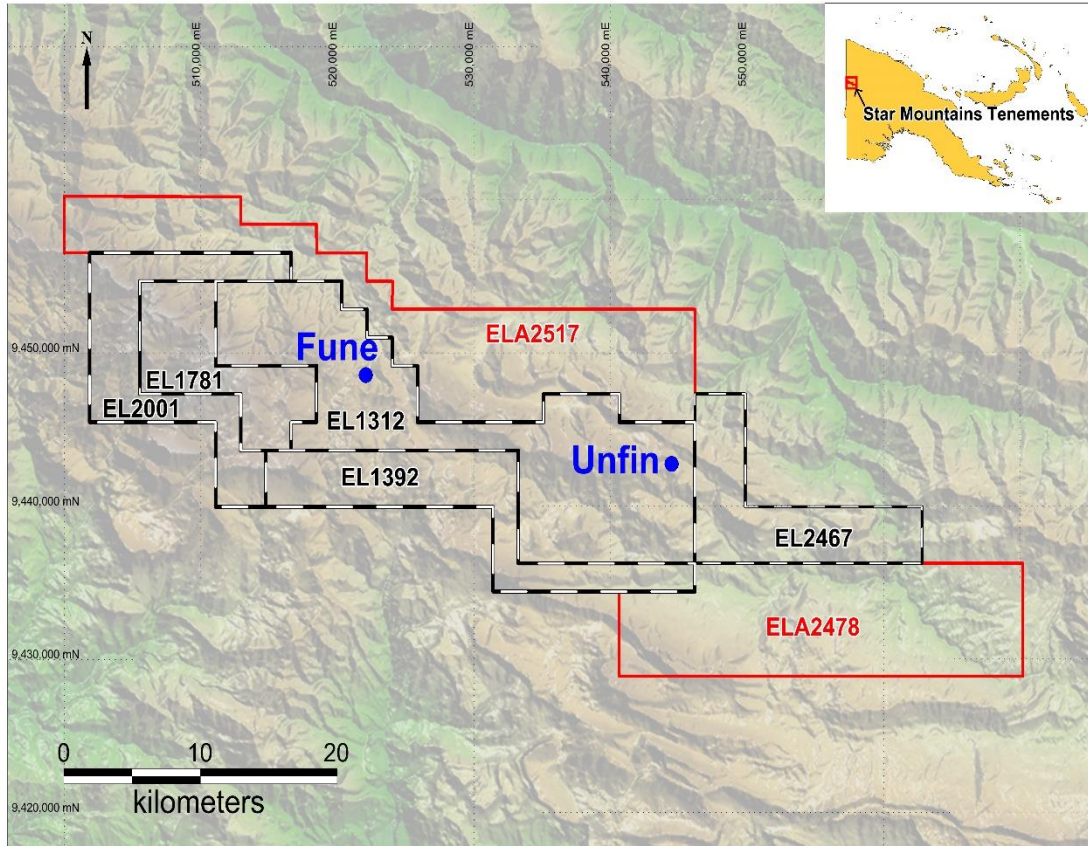


Exciting JV with Anglo American Plc



- Anglo paid \$US10 million initially and committed to earn in.
- Phase 1 (51%): Anglo to spend US\$25 million over four years and achieve a JORC inferred resource of 3 million tonnes contained Cu in five years.
- Anglo has achieved the US\$25 million spending hurdle, and consequently assumed project management
- Phase 2 (80%): Anglo to complete and fund BFS
- Anglo to provide Highlands up to \$150 million in project funding as deferred free carry

Exploration over five decades



- First explored by Kennecott in the early 1960s.
- HIG conducted drilling campaigns in 2011 and 2012.
- Intercepts included:
 - 596m @ 0.61% Cu & 0.85g/t Au from 24 m down hole,
 - 22m @ 1.42% Cu & 0.57 g/t Au from 146m down hole,
 - 68m @ 0.97% Cu & 0.37 g/t Au from 280m down hole.

(For full details of exploration results, see ASX release entitled "Star Mountains Project Update" released on March 1, 2013)

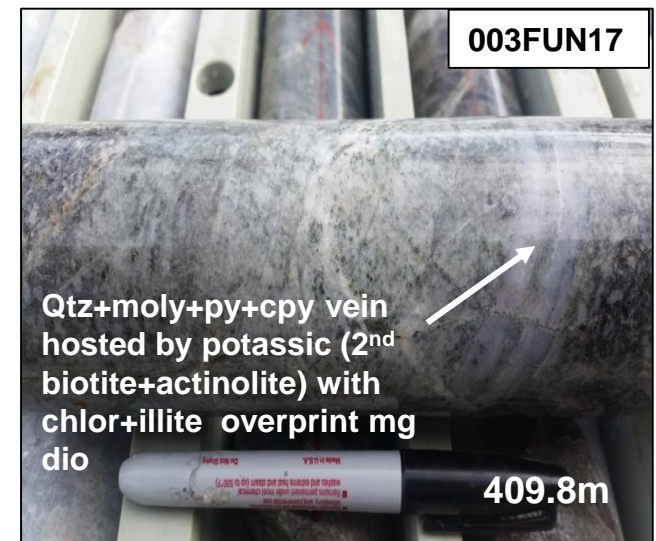
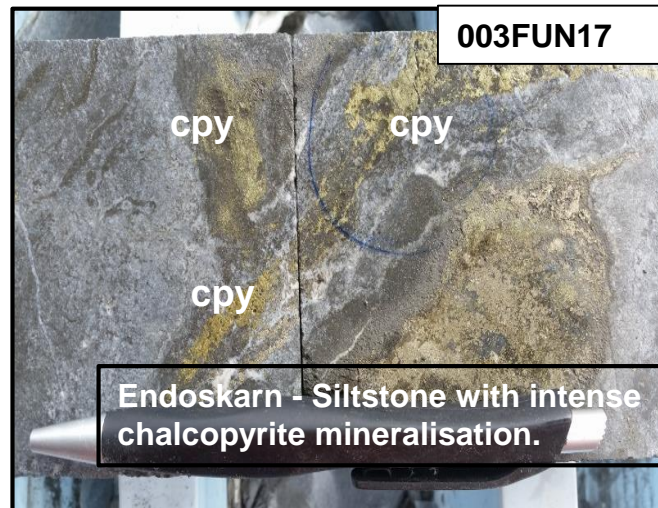
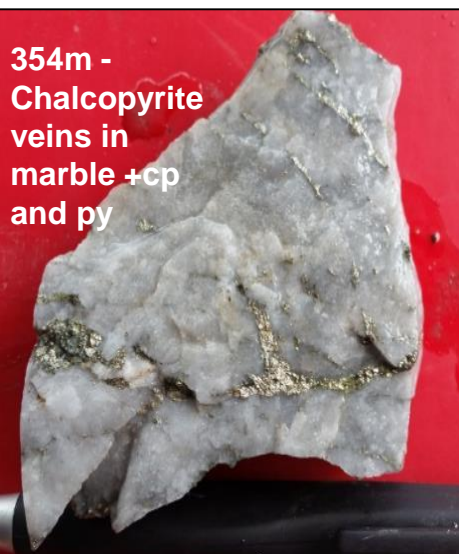
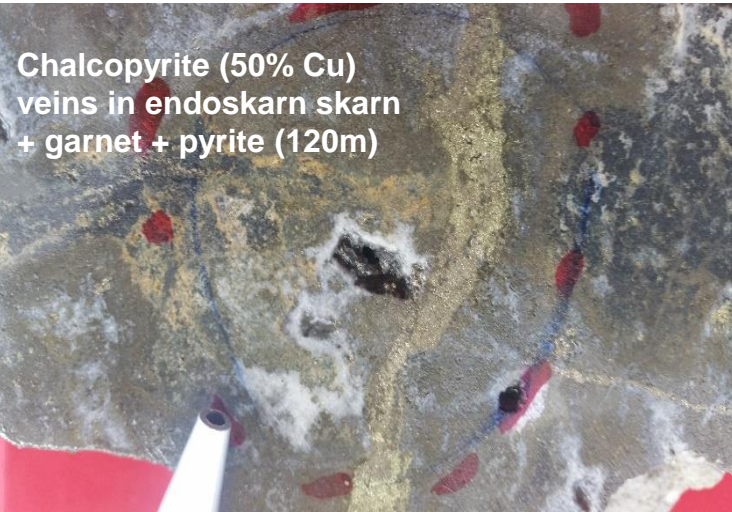
Drilling yielding encouraging results



- Initial JV drilling campaign completed December 2015. Nine holes for 5,387 metres.
- New campaign started October 2016.
- Five holes completed for 4,100 metres at two targets – Fune and Unfin.
- Latest results at Fune include:
 - 12m @ 0.19 g/t Au and 0.68% Cu from 198m; and
 - 94 m @ 0.17 g/t Au and 0.58% Cu from 260m, including 42m @ 0.31 g/t Au and 0.87% Cu from 326 m at a 0.5% Cu lower cut-off.
- Campaign extended to test targets at depth.

(For full details of exploration results, see ASX release of June 8, 2017)

003FUN17 Mineralisation Examples

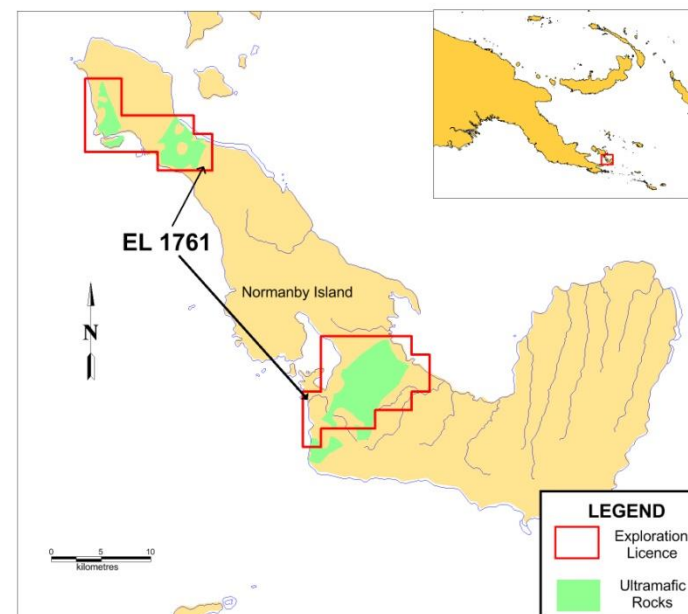


SEWA BAY



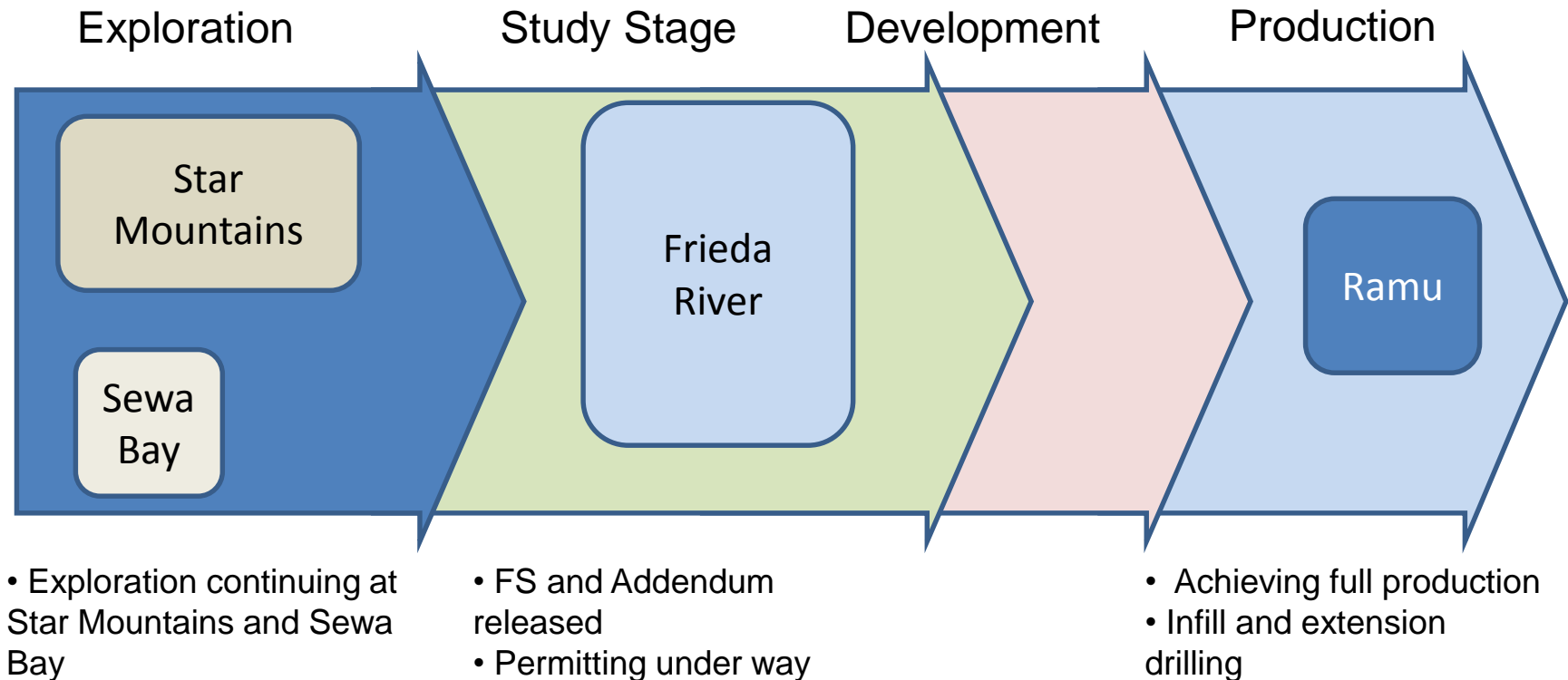
Nickel laterite exploration upside

- Potential direct-shipping export nickel laterite project
- Exploration partnership with Japanese trading house Sojitz/Pacific Metals
- Positive nickel laterite results from previous drilling campaigns
 - 1.1 metres at 1.61% Ni from surface
 - 1 metre at 1.43% Ni from surface
 - 2.4 metres at 1.42% Ni from surface
 - 1 metre at 1.41% Ni from surface
 - 1.9 metres at 1.4% Ni from surface*
- LIDAR program completed. Next stage being considered
- Exploration funded by Sojitz/Pacific Metals



*For full results see ASX announcement of August 18, 2015, entitled "Sewa Bay Update".

Well established project pipeline



- **Additional projects being actively pursued**
- **Focus on current portfolio commodities**
- **Projects with potential for cashflow generation within near to medium term**

Improved commodity price outlook

Nickel - poised for rebound

NICKEL



SOURCE: TRADINGECONOMICS.COM | OTC

Gold – up 6% in 2017

GOLD



SOURCE: TRADINGECONOMICS.COM | OTC

Copper – market deficit in sight

COPPER



SOURCE: TRADINGECONOMICS.COM | OTC

Cobalt – doubled in 12 months

COBALT



SOURCE: TRADINGECONOMICS.COM | OTC

Compelling investment case

Major leveraged exposure to copper, nickel, gold

	Copper (Mt)	Gold (Mozs)	Nickel (lbs Mn)	Cobalt (lbs Mn)
Total Resource Contained Metal	12.7	20.4	2778	278
HIG share	2.6	4.1	238	24





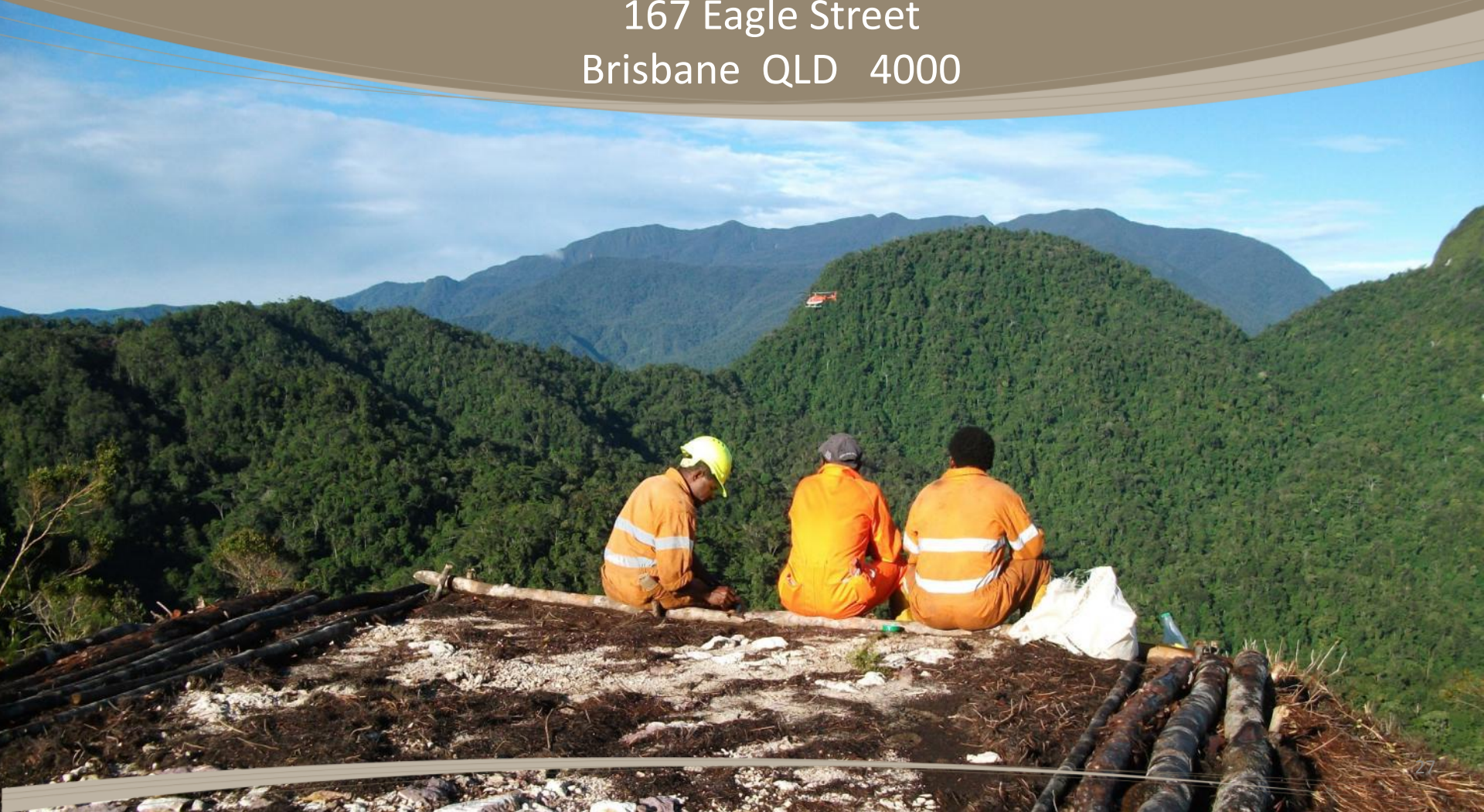
www.highlandspacific.com

Tel. 07 3239 7800

Level 4

167 Eagle Street

Brisbane QLD 4000



Frieda River (HITEK) Resource

The Frieda River Copper-Gold Project exploits the HITEK deposit, which is a large-scale porphyry-style copper-gold deposit with low concentrations of deleterious elements. The Mineral Resource estimates are reported under the Australasian Code for Reporting of Exploration Results, Mineral Resources and Ore Reserves (The JORC Code, 2012 Edition).

January 2017 HITEK Mineral Resource

Classification	Tonnes (Mt)	Copper (%)	Gold (g/t)
Measured	620	0.53	0.30
Indicated	1,240	0.44	0.22
M+I subtotal	1,860	0.47	0.25
Inferred	780	0.35	0.18
MII total	2,640	0.44	0.23

Copper cut-off grade 0.2% (total copper).

This Mineral Resource is reported on a 100% ownership basis.

May include minor computational errors due to rounding.

The HITEK Mineral Resource is constrained within Revenue Factor 1.5 shell, (US\$4.95/lb Cu, US\$2,175/oz Au)

"FRL_HITEK_V3_25x25x15_1608v1e HIT-MII EK-MII_Shell_06_1.5.sft".

Competent Person Statement

Mineral Resources

The data in this report that relate to Mineral Resources for Frieda River are based on information reviewed by Mr Shaun Versace who is a Member of the Australasian Institute of Mining and Metallurgy (MAusIMM). Mr Versace is a full time employee of PanAust Limited. Mr Versace has sufficient experience relevant to the style of mineralisation and type of deposit under consideration and to the activity which he is undertaking to qualify as a Competent Person as defined in the 2012 Edition of the Australasian Code for Reporting of Exploration Results, Mineral Resources and Ore Reserves. Mr Versace consents to the inclusion in the report of the Mineral Resources in the form and context in which they appear.

The information on the HITEK Resource is extracted from the report entitled "2017 Horse/Ivaal/Trukai/Ekwai/Koki (HITEK) Deposit Frieda River Mineral Resource and Ore Reserve Statements" created on 24 March 2017 and available on the Company website. No additional resource drilling or modelling has taken place for the HITEK deposit since the 2017 Resource and Reserve Report.

Nena Mineral Resource estimate (copper cut-off grade 0.3%)

Category	MT	Cu(%)	Au(g/t)	As(%)	Sb(ppm)
Indicated	33	2.81	0.65	0.22	153
Inferred	12	1.84	0.45	0.14	88
Total	45	2.55	0.60	0.20	136

Competent Person Statement: Details contained in this report that pertain to the Nena Resource Estimates are based upon, and fairly represent, information and supporting documents compiled by Mr Paul Gow. Mr Gow is a Member of The Australasian Institute of Mining and Metallurgy and was a full-time employee of Glencore Xstrata plc at the time the estimate was prepared. Mr Gow has sufficient experience which is relevant to the style of mineralisation and type of deposit under consideration and to the activity which he is undertaking to qualify as a Competent Person as defined in the 2012 Edition of the 'Australasian Code for Reporting of Exploration Results, Mineral Resources and Ore Reserves'. Mr Gow consents to the inclusion in the report of the matters based on his information in the form and context in which it appears.

The information on the Nena Resource is extracted from the report entitled "Frieda – Mineral Resource and Ore Reserve" created on 14 March 2014 and available on the Company website.

Frieda River (HIT) Ore Reserve

2017 HITEK Ore Reserve estimate

Classification	Tonnes (Mt)	Copper (%)	Gold (g/t)
Proved	413	0.54	0.32
Probable	272	0.45	0.21
Ore Reserves	686	0.50	0.28

The Measured and Indicated Mineral Resources are inclusive of those Mineral Resources modified to produce the Ore Reserves.

This Ore Reserve is reported on a 100% ownership basis.

May include minor computational errors due to rounding.

The Frieda River Ore Reserve is estimated at commodity prices of US\$3.30/lb copper and US\$1,455/oz gold subject to a floating value¹ based cut-off grade. The representative average copper only cut-off grade is 0.21% copper.

¹Potential mill feed is determined on a net mill value basis and incorporates the influence of metal recovery, ore processing costs and revenue.

Competent Person. Ore Reserves

The data in this report that relate to Ore Reserves for the Frieda River Project are based on information reviewed by Mr Scott Cowie who is a Member and Chartered Professional (Mining) of the Australasian Institute of Mining and Metallurgy (MAusIMM CP). Mr Cowie is a full time employee of PanAust Limited. Mr Cowie has sufficient experience relevant to the activity which he is undertaking to qualify as a Competent Person as defined in the 2012 Edition of the Australasian Code for Reporting of Exploration Results, Mineral Resources and Ore Reserves. Mr Cowie consents to the inclusion in the report of the Ore Reserves in the form and context in which they appear.

The information on the HITEK Reserve is extracted from the report entitled “2017 Horse/Ivaal/Trukai/Ekwai/Koki (HITEK) Deposit Frieda River Mineral Resource and Ore Reserve Statements” created on 24 March 2017 and available on the Company website.

Highlands confirms that it is not aware of any new information or data that materially affects the information included in the original market announcement and, in the case of estimates of Mineral Resources or Ore Reserves that all material assumptions and technical parameters underpinning the estimates in the relevant market announcement continue to apply and have not materially changed. Highlands confirms that the form and context in which the Competent Person’s findings are presented have not been materially modified from the original market announcement.

The information on the Horse-Ivaal, Trukai, Ekwai and Koki Resource and the HITEK Reserve is extracted from the report entitled “Feasibility Report Addendum (January 2017) released on 3 March 2017 and available on the Company website. No additional resource drilling or modelling has taken place for the Horse-Ivaal-Trukai, Ekwai and Koki deposits since the release of the Resource and Reserve Report included in the Addendum.

The information on the Nena Resource is extracted from the report entitled “2014 Mineral Resource and Ore Reserve Statements” created on 14 March 2014 and available on the Company website. No additional resource drilling or modelling has taken place for the Nena deposit since the 2014 Resource and Reserve Report

Highlands confirms that it is not aware of any new information or data that materially affects the information included in the original market announcement and, in the case of estimates of Mineral Resources or Ore Reserves that all material assumptions and technical parameters underpinning the estimates in the relevant market announcement continue to apply and have not materially changed. Highlands confirms that the form and context in which the Competent Person’s findings are presented have not been materially modified from the original market announcement.

Ramu Mineral Resource

Ramu Mineral Resources (at a 0.5% nominal cut-off and excluding oversize (+2mm)). 31 December 2016

Kurumbukari				
Category	MT	Ni(%)	Co(%)	
Measured	37	0.9	0.1	
Indicated	5	1.3	0.1	
Inferred	2	1.2	0.1	
Total	44	0.96	0.1	
Ramu West				
Category	MT	Ni(%)	Co(%)	
Indicated	17	0.9	0.1	
Inferred	3	1.5	0.1	
Total	20	1.0	0.1	
Greater Ramu				
Category	MT	Ni(%)	Co(%)	
Inferred	60	1.0	0.1	
Global Total	MT	Ni(%)	Co(%)	
	124	1.0	0.1	

Notes: 1. Totals may not equal the sum of the component parts due to rounding adjustments. 2. Tonnes (dry) represent the -2 mm economic portion of resource mineralization in the rocky saprolite .

Competent Persons Statement: The information in this report that relates to Ramu Mineral Resources is based on information compiled by Xiong Xiaofang, who is a Fellow of The Australasian Institute of Mining and Metallurgy. Mr Xiong Xiaofang is a full-time employee of China ENFI Engineering Corporation and has sufficient experience which is relevant to the style of mineralization and type of deposit under consideration and to the activity which he is undertaking to qualify as a Competent Person as defined in the 2012 Edition of the 'Australasian Code for Reporting of Exploration Results, Mineral Resources and Ore Reserves'. Mr Xiong Xiaofang consents to the inclusion in the report of the matters based on his information in the form and context in which it appears.

Ramu Ore Reserve

Ramu Ore Reserve. 31 December 2016

Kurumbukari				
Category	MT	Ni(%)	Co(%)	Rocks +2mm MT
Proved	29	0.9	0.1	
Probable	6	1.3	0.1	9
Total	35	1.0	0.1	9

Ramu West				
Category	MT	Ni(%)	Co(%)	Rocks +2mm MT
Proved				
Probable	14	0.9	0.1	
Total	14	0.9	0.1	

Global Total	MT	Ni(%)	Co(%)	
	49	1.0	0.1	9

Notes: 1. Totals may not equal the sum of the component parts due to rounding adjustments. 2. Ore tonnes (dry) represent the -2 mm economic portion of resource mineralization. Rock represents an estimate of oversize material (+2 mm) that includes low-grade rocks and rock fragments that occur in the rocky saprolite mineralized zone and are considered as internal waste. The rock will be removed by a simple screening process prior to beneficiation. Accordingly, the ore tonnage is reported after initial screening prior to the beneficiation plant. 3. The Ore Reserve estimate was made using metal prices of US\$17,045/t nickel and US\$25,412/t cobalt. 4. Cut-off grade is variable and equates to 0.58% nickel equivalent, including credit for recovered cobalt metal.

Competent Persons Statement: The information in this report that relates to Ramu Ore Reserves is based upon information compiled by Mr Chao An Deng, who is a Deputy Chief Engineer of China ENFI Engineering Corporation and a Fellow of the Australasian Institute of Mining and Metallurgy. Mr Chao An Deng is a full-time employee of China ENFI Engineering Corporation and has sufficient experience relevant to the style of mineralization and type of deposit under consideration to qualify as a Competent Person as defined in the 2012 Edition of the "Australasian Code for Reporting of Exploration Results, Mineral Resources and Ore Reserves (JORC Code)". Mr Chao An Deng consents to the inclusion in the report of the matters based on his information in the form and context in which it appears.

The following statements apply to the Star Mountains exploration results and exploration targets: (1) Mineralised intersections are quoted as down hole widths. The porphyry mineralisation occurs as disseminations and vein stockworks. Drill intersections described in this report are based on core lengths and may not reflect the true width of mineralisation. (2) Collar locations are in UTM Zone 54 co-ordinates using the ADG66 horizontal datum. (3) Drill core is PQ, HQ or NQ size. (4) Assays were carried out on half sawn core. The half core is crushed and pulverized to ~ 180 mesh. 200 gram samples are used for assay. QAQC control samples make up approximately 10% of each batch sent for analysis. The unused half core is stored on site. (5) Samples were analysed at ALS-Chemex in Townsville. Gold is by 50g fire assay and copper by ICP-AES on an aqua regia digest. Samples assaying greater than 0.5% Cu are re-assayed using an ore grade method suitable for higher grade samples. (6) Hole positions are based on surveys of the drill pad. Actual collars are within 10m of stated locations. (7) Copper equivalent calculations represent the total metal value for each metal, multiplied by the conversion factor, summed and expressed in equivalent copper percentage. These results are exploration results only and no allowance is made for recovery losses that may occur should mining eventually result, nor metallurgical flowsheet considerations. However it is the Company's opinion that elements considered here have a reasonable potential to be recovered as evidenced in similar multi-commodity natured porphyry mines elsewhere in Papua New Guinea. The copper equivalent calculation is intended as an indicative value only. Copper equivalent conversion factors and long-term price assumptions are as follows: Copper Equivalent Formula= $\text{Cu \%} + \text{Au(g/t)} \times 0.53$; Price Assumptions- Cu (US\$4/lb), Au (US\$1400/oz).

The following statements apply to the Sewa Bay exploration results:

- (i) Mineralised intersections are quoted as down hole width.;
- (ii) The auger holes were sampled using 1m sample lengths. The entire sample was submitted for assay.
- (iii) Locations are in UTM Zone 56 co-ordinates using the AMG66 horizontal datum.
- (iv) Samples were analysed at ALS-Chemex in Townsville. Nickel, cobalt and magnesium by ICP-AES on an aqua regia digest. Samples assaying greater than 1.0% Ni are re-assayed using an ore grade method suitable for higher grade samples. (v) Sample locations are based on GPS survey. Actual collars are within 10m of stated locations.

The Potential quantity and grade related to Exploration Targets in this presentation is conceptual in nature as there has been insufficient exploration to define a Mineral Resource. It is uncertain if further exploration will result in the determination of a Mineral Resource. These exploration target tonnes and grade ranges are considered realistic because they are well within the typical size and grade ranges expected for porphyry copper deposits in this and other south west Pacific island arcs, and are consistent with data for the known porphyry copper deposits already located in Highlands' Star Mountains tenements.

Competent Persons Statement: The exploration results and exploration targets reported here are based on information compiled by Mr L.D. Queen who is a member of the Australasian Institute of Mining and Metallurgy, and who was an employed by Highlands Pacific Limited, now a consultant to Highlands Pacific. Mr Queen has sufficient experience relevant to the style of mineralisation and the type of deposit under consideration, and to the activity which he is undertaking, to qualify as a Competent Person as defined in the "Australasian Code for Reporting of Exploration Results, Mineral Resources and Ore Reserves, The JORC Code 2012 Edition". He consents to the inclusion in the report of the matters based on the information compiled by him in the form and context in which it appears.



www.highlandspacific.com

Tel. 07 3239 7800

Level 4

167 Eagle Street

Brisbane QLD 4000

