



ASX ANNOUNCEMENT

7 August 2017

Aurora Tank Gold Priority Calcrete Sampling

Marmota Limited (ASX: MEU) ("Marmota")

KEY POINTS

- Last week, Marmota was delighted to announce **excellent high grade gold intersections**, including **4m at 40 g/t** gold (from 32m) at Aurora Tank (Goshawk) (EL5589) [[ASX:MEU 2 Aug 2017](#)]
- Given the excellent results obtained at Aurora Tank, and the partial state of calcrete sampling over the tenement, the Company is pleased to announce that Marmota has initiated high priority calcrete sampling via auger drilling over the rest of the Aurora Tank tenement
- Priority auger drilling program **to commence this week**
- **Program Details:** 400 calcrete samples at Aurora Tank via 4WD-mounted auger drill rig

Background

- Aurora Tank (EL 5589) is situated about 50km NE of the Challenger gold mine (ASX:WPG) [see Fig. 6]
- Aurora Tank is 100% owned by Marmota
- Gold was first identified at Aurora Tank's Goshawk gold prospect by calcrete sampling – the same methodology that led to the Challenger discovery

Historical and Proposed New Calcrete Sampling

- **Historical** calcrete sampling at Aurora Tank is shown on Fig. 1: spacings vary considerably between wide 800m (regional) and detailed 50m spacings
- **Proposed new** calcrete sampling at Aurora Tank, commencing this week, is shown in Fig. 2.

The proposed new calcrete sampling serves 4 main purposes:

1. **Historical gold-in-calcrete anomalies that have never been followed up:** There are a number of historical gold-in-calcrete anomalies within the tenement that have never been followed up. The program will in-fill around these locations at 50m spacings, and help define the extent and size of each anomaly.
2. To help define the **extent of the Goshawk zone** of likely mineralisation: to what extent it may be open in untested directions, in particular, to the north, west, and south [see Fig. 2 & 3]. Just from the recent drilling, 11 intersections are open.
3. The recent first-pass **Kingfisher reconnaissance drilling** identified a zone of gold anomalism at the very SE corner of the drilled zone, including an intersection of 4m at 1g/t (950ppb), surrounded by secondary dispersion to the west and south west. There is no drilling to the east of that point, and very sparse calcrete data to the east of that point. Here, 50m infill sampling will be carried out and follow-up drilling is likely [see Fig. 5].
4. **Over the rest of the tenement:** to reduce sample grid spacings from up to 800m to 400m, to identify new zones of gold-in-calcrete anomalism that may be of interest.

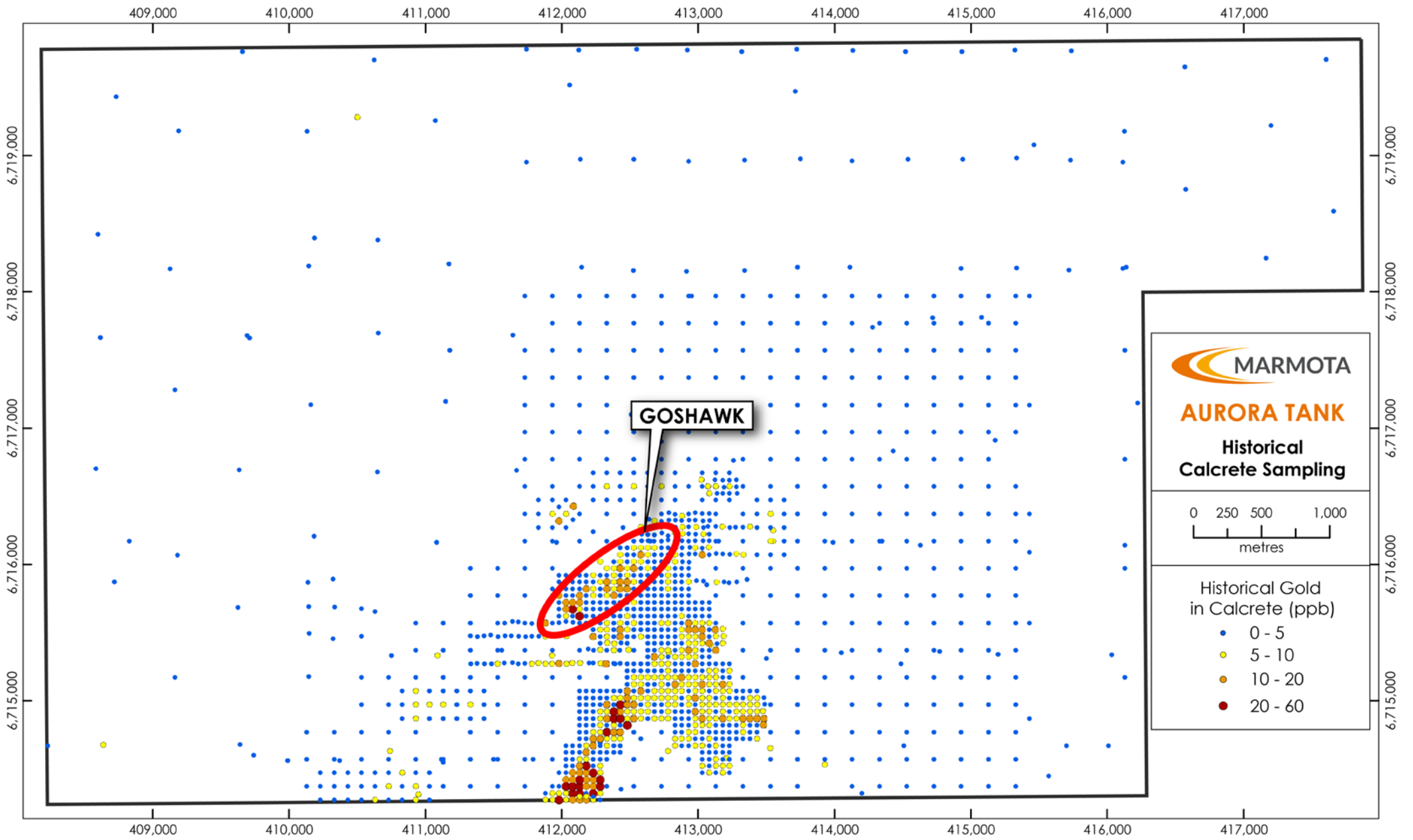


Figure 1: Historical Calcrete sampling over Aurora Tank + Goshawk Prospect

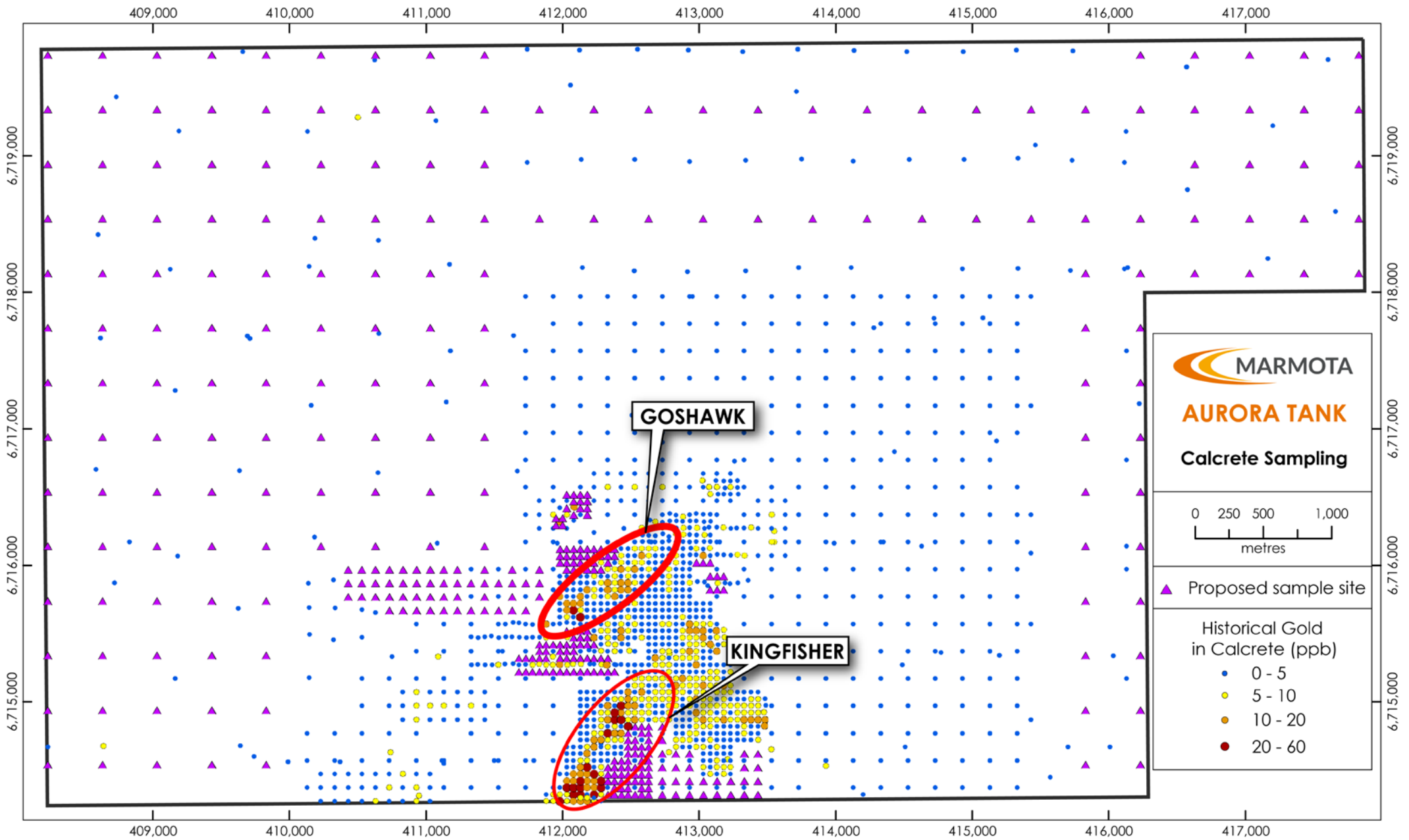


Figure 2: Aurora Tank tenement – Proposed calcrete sampling grid ▲ (commencing this week)

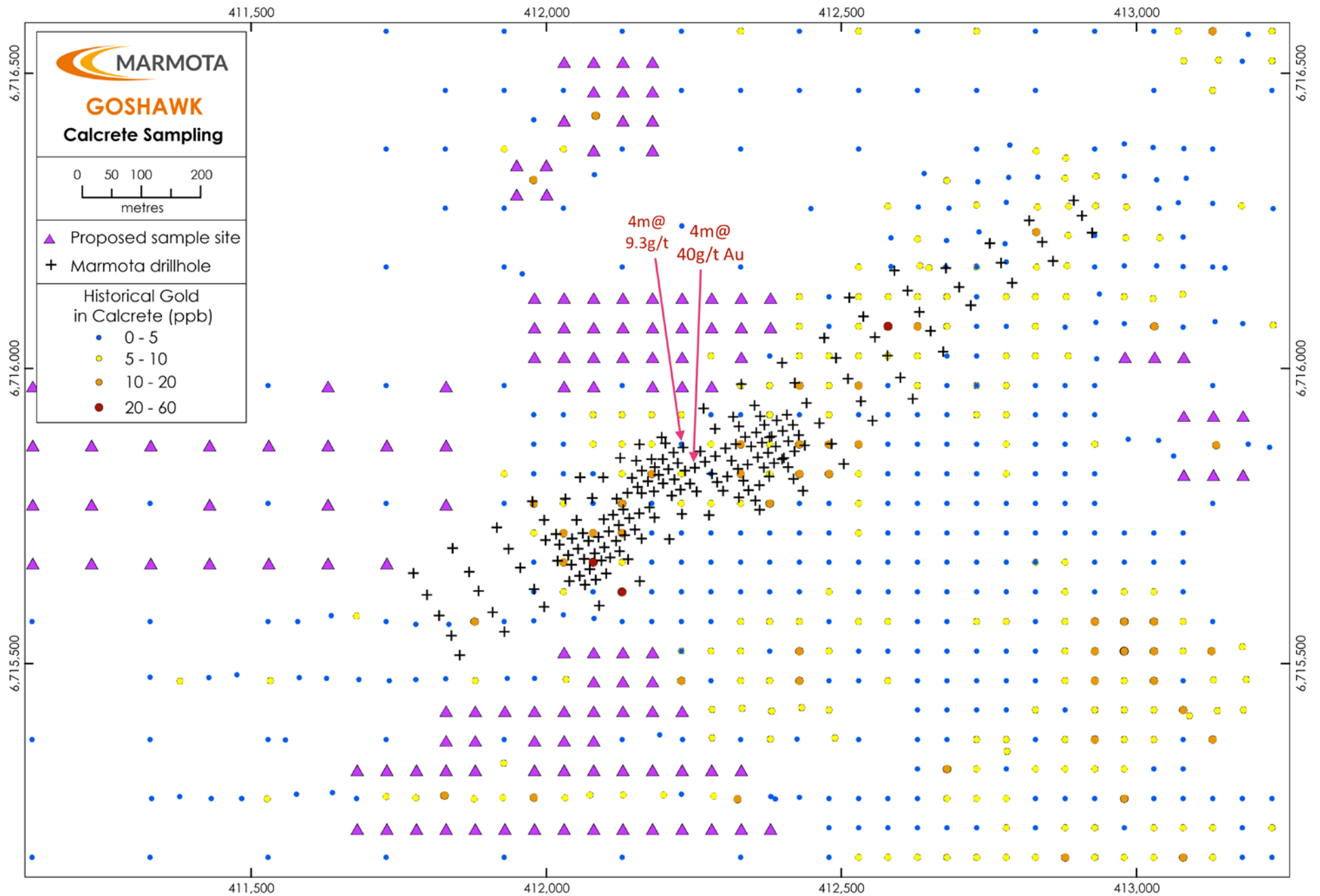


Figure 3: Goshawk detail – Infill calcrete sampling ▲ and Marmota 2016/17 Goshawk drilling (+)

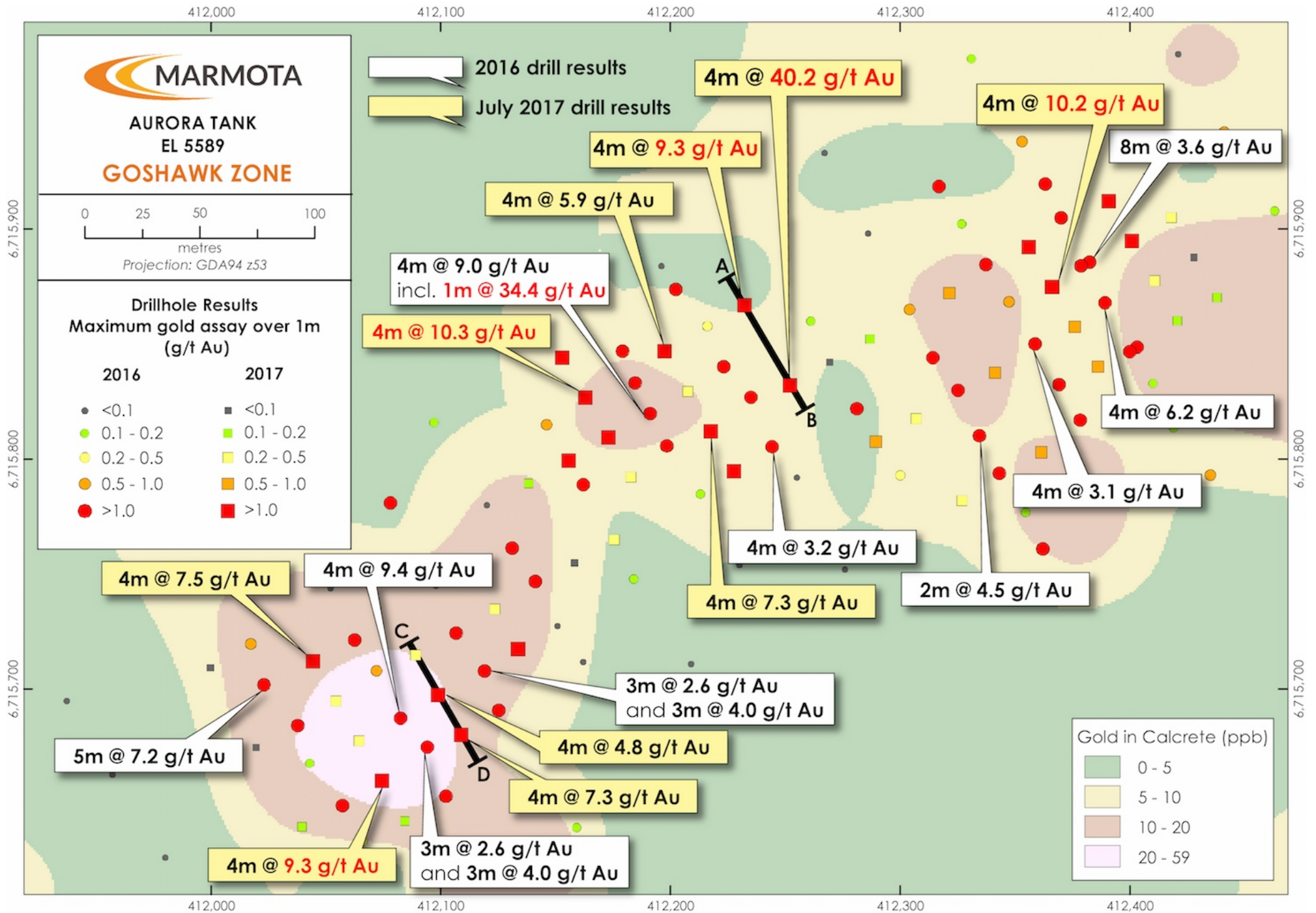


Figure 4: Goshawk detail – Location of 4m x 40g/t and gold-in-calcrete contour map

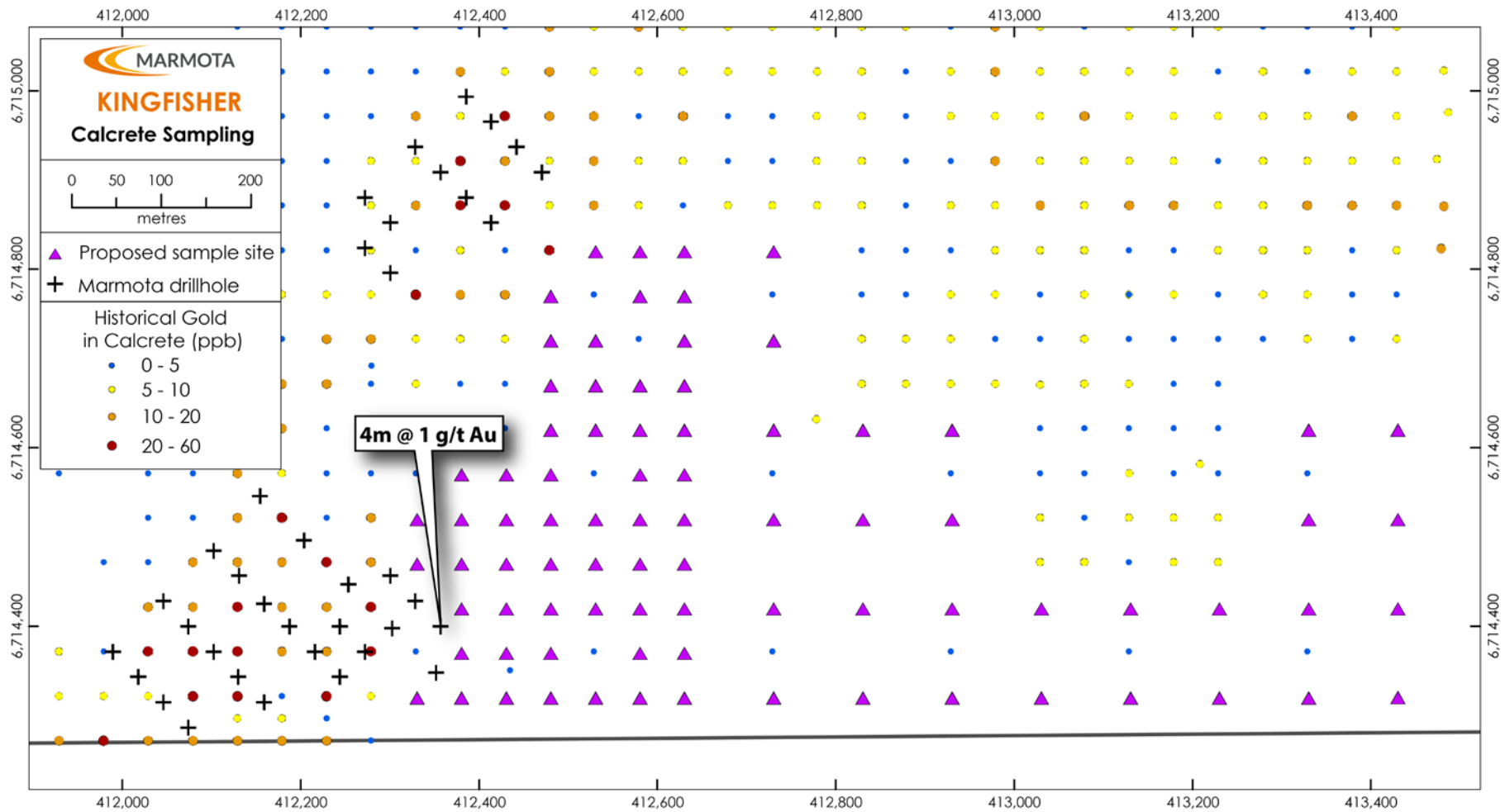
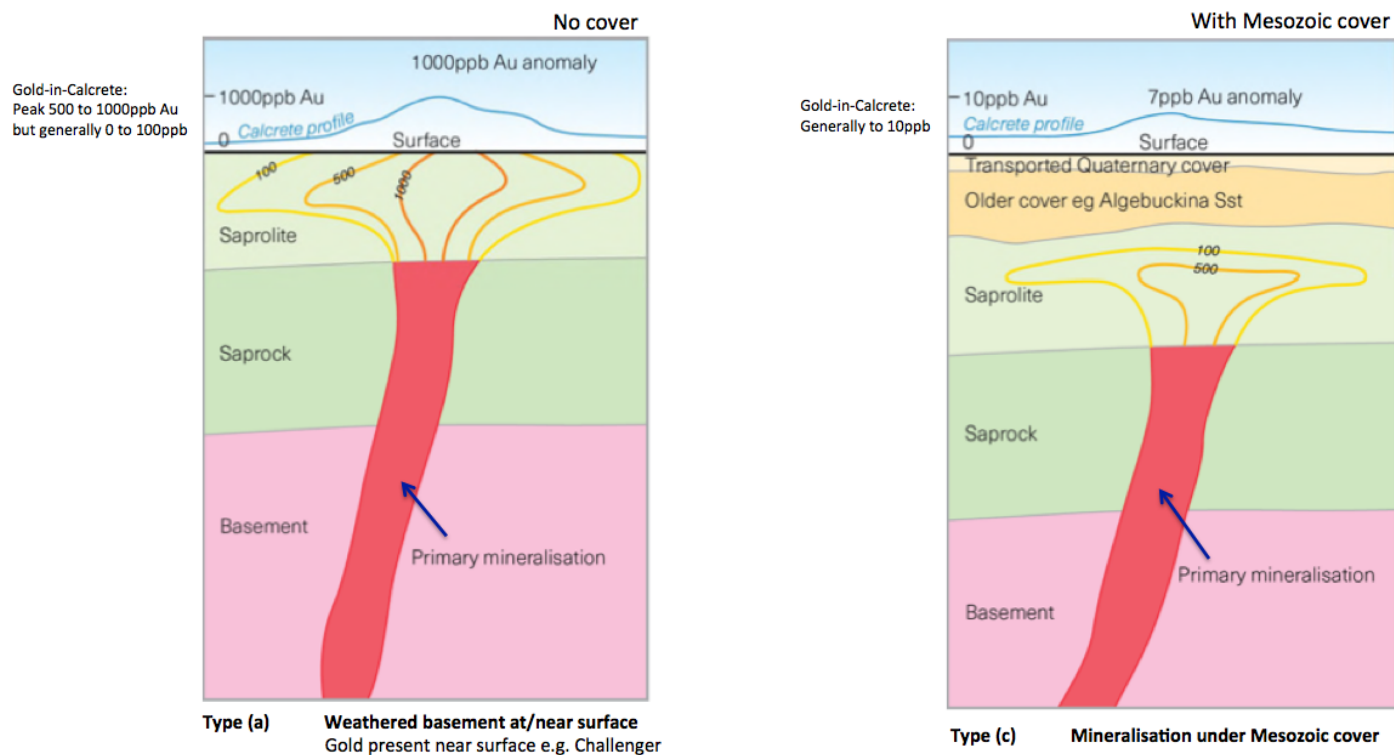


Figure 5: Kingfisher detail

Proposed infill calcrete sampling grid ▲
July 2017 reconnaissance drilling (+)

Commentary

An interesting feature of the 4m at 40g/t gold intersection in hole 17AT021, just obtained in July 2017 drilling [ASX:MEU 2 Aug 2017] is that, while it does occur under an elevated gold-in-calcrete anomalism, **the best result occurs underneath an area of just 5 to 10 ppb gold-in-calcrete** [see Figure 3 and 4 above: pale yellow contoured zone] – indeed, the best result is obtained under one of the lowest calcrete results in the elevated Goshawk zone! This highlights, as set out in Marmota’s Gold Exploration Updates [ASX:MEU 10 May 2017, 13 Sept 2016], that excellent results can occur under relatively low gold-in-calcrete anomalies, especially if obscured by just a small amount of surface cover. A diagrammatic example is illustrated below where the presence of transported cover (RHS) can greatly reduce the size of the measured gold-in-calcrete anomaly, even though the underlying primary mineralisation is identical.



This means that all coherent gold-in-calcrete anomalous zones should be considered as potentially significant targets.

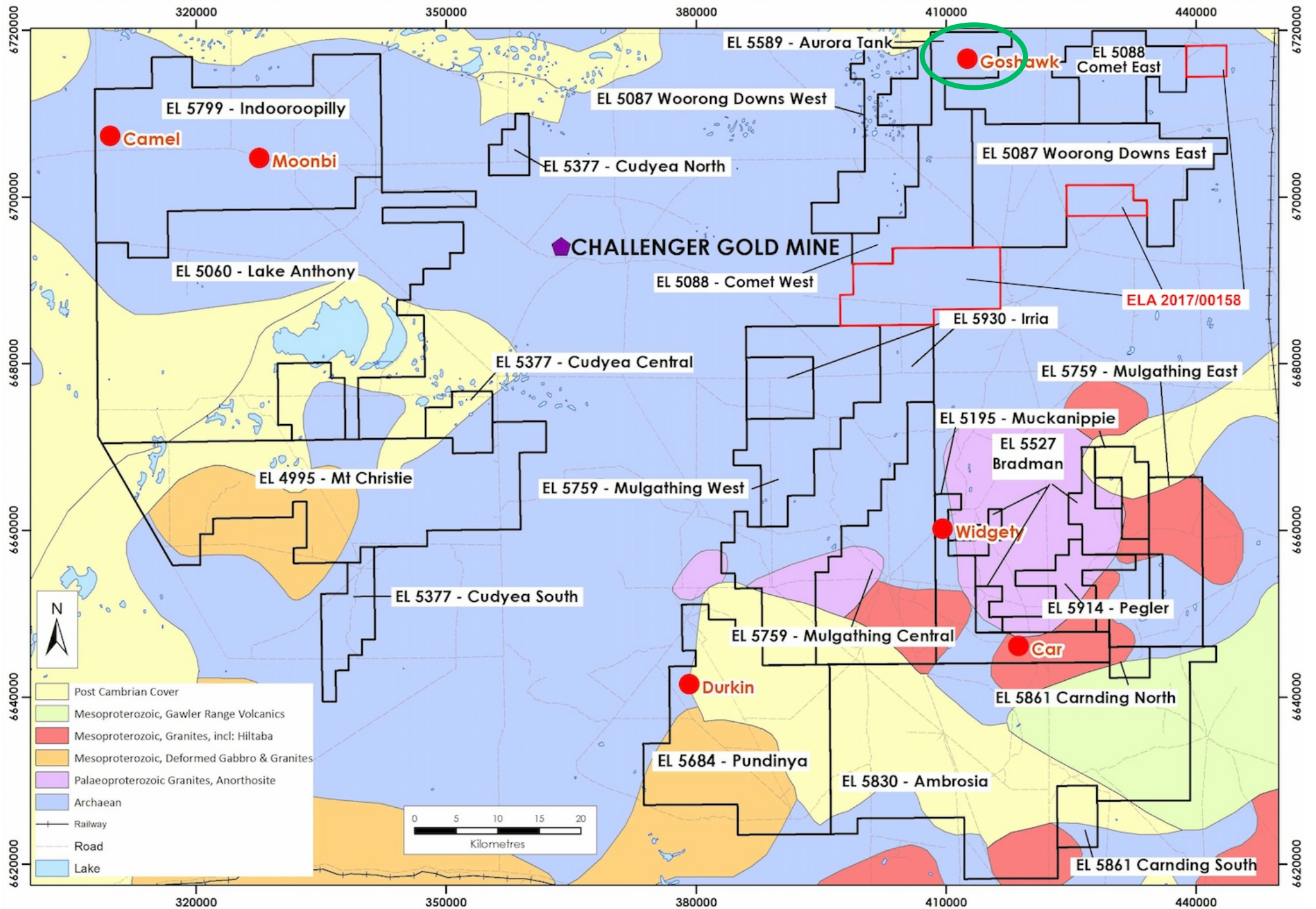


Figure 6: Marmota's Gawler Craton Gold Project

For further information, please contact:

Marmota Limited

Dr Colin Rose Executive Chairman
Email: colin@marmota.com.au

Unit 6
79-81 Brighton Road
Glenelg SA 5045
ABN: 38 119 270 816
T: (08) 8294 0899
F: (08) 8376 8633
www.marmota.com.au

About Marmota Limited

Marmota Limited (ASX: MEU) is a South Australian mining exploration company, focused on gold, copper and uranium. Gold exploration is centred on the Company's dominant tenement holding in the highly prospective and significantly underexplored Gawler Craton, near the Challenger gold mine, in the Woomera Prohibited Defence Area. The Company's copper project is based on the Yorke Peninsula. The Company's largest uranium project is at Junction Dam adjacent to the Honeymoon mine.

For more information, please visit: www.marmota.com.au

Competent Persons Statement

Information in this Release relating to Exploration Results is based on information compiled by Dr Kevin Wills, who is a Fellow of the Australasian Institute of Mining and Metallurgy. He has sufficient experience which is relevant to the styles of mineralisation and types of deposits under consideration and to the activities being undertaken to qualify as a Competent Person as defined in the 2012 Edition of the "Australasian Code of Reporting of Exploration Results, Mineral Resources and Ore Reserves." Dr Wills consents to the inclusion in this report of the matters based on his information in the form and context in which it appears.

Where results from previous announcements are quoted, Marmota confirms that it is not aware of any new information or data that materially affects the information included in the relevant market announcement and, in the case of estimates of Mineral Resources, that all material assumptions and technical parameters underpinning the estimates in the relevant market announcement continue to apply and have not materially changed.