



MARKET RELEASE

30 August 2017

Rural Broadband Initiative and Mobile Black Spot Funding decisions announced

Please find attached an announcement from the Communications Minister Simon Bridges regarding the Government investing \$270 million to roll out Ultra-Fast Broadband to 190 more small towns, and extend rural broadband to another 74,000 households and businesses.

As part of this investment the Rural Connectivity Group joint venture (a joint venture between the three largest mobile companies Spark, Vodafone and 2degrees) will be a partner with Crown Fibre Holdings on the Government's Rural Broadband Initiative and coverage of mobile black spots under the Mobile Black Spot Fund. The Rural Connectivity Group has secured between \$150 million and \$250 million of funding from the Government to help deliver these initiatives through the use of mobile technologies. Spark, as a member of the Rural Connectivity Group, has committed to invest a total of \$25 million over 5 years in these initiatives.

- ENDS -

For media queries, please contact:

Richard Llewellyn

Head of Corporate Communications

+64 (0) 27 523 2362

For investor relations queries, please contact:

Dean Werder

General Manager Finance and Business Performance

+64 (0) 27 259 7176

Hon Simon Bridges

Minister for Communications



30 August 2017

Media Statement

Ultra-Fast Broadband in 190 more towns

The Government is investing \$270 million to roll out Ultra-Fast Broadband (UFB) to 190 more small towns, and extend rural broadband to another 74,000 households and businesses, Communications Minister Simon Bridges says.

“We’re also bringing the completion of the UFB network forward by two years. By the end of 2022, our UFB programme will provide more than four million New Zealanders with access to world-class internet,” Mr Bridges says.

The investment is made up of:

- \$130 million to extend UFB to another 60,000 households and businesses in 190 new towns and complete the network by 2022.
- \$140 million to extend rural coverage of high speed broadband under the Rural Broadband Initiative (RBI) to another 74,000 rural households and businesses, and to deliver mobile coverage on 1000 kilometres of rural highways and more than 100 tourist areas through the Mobile Black Spot Fund (MBSF).

UFB uses fibre optic cables to deliver broadband to households and businesses. It is most suitable and cost effective in urban areas with higher dwelling and business densities.

“We started UFB in 2010 with the original goal of connecting 34 towns to world-class fibre-to-the-premises. Earlier this year we expanded it to 200 more towns and today’s announcement will bring us to 390,” Mr Bridges says.

Because UFB is not feasible for every rural community, the RBI provides faster internet to homes and businesses outside UFB areas through a combination of fixed lines upgrades and new fixed wireless coverage.

Over 300,000 rural homes and businesses already have access to improved broadband under the first phase of RBI which was completed in June 2016.

Today's funding announcement is in addition to the \$150 million the Government has already allocated for rural broadband and mobile coverage.

"We want to ensure that some of our biggest sectors that operate in rural New Zealand – such as agriculture and tourism – can benefit from the productivity improvements that better connectivity offers," Mr Bridges says.

The Mobile Black Spot Fund will improve public safety and visitor experiences by providing greater mobile coverage on stretches of State Highway and in tourism locations where no coverage currently exists.

"We are providing coverage along remote parts of the State Highway network that until now had no coverage at all. For example, State Highway 6 on the West Coast and State Highway 1 in the Far North," Mr Bridges says.

"Better connectivity in these remote areas will enhance visitor experiences at some of the country's tourist hotspots, such as Milford Sound, Cape Reinga and Bethells Beach.

Together, the Rural Broadband and Mobile Black Spot programmes will be delivered through the construction of more than 450 new towers, in addition to the 150 already built.

"Today's announcement brings our total investment in rolling out world-leading communications infrastructure to more than \$2 billion," Mr Bridges says.

"Once complete, New Zealand will be in the top five countries in the OECD for access to high speed broadband. Considering that in 2011 we were placed 26th with very little connectivity that will be a fantastic achievement.

"By 2022, 87 per cent of New Zealanders will have access to UFB and 99 per cent will have access to high speed internet," Mr Bridges says.

The \$270 million programme announced today will be funded by \$240 million of recycled capital from earlier stages of the UFB programme and \$30 million from the Telecommunications Development Levy.

"This investment is a vital part of the Government's plan to support regional growth and develop a productive and competitive economy," Mr Bridges says.

Media contact: Kristy Martin 022 015 8039

Attachments:

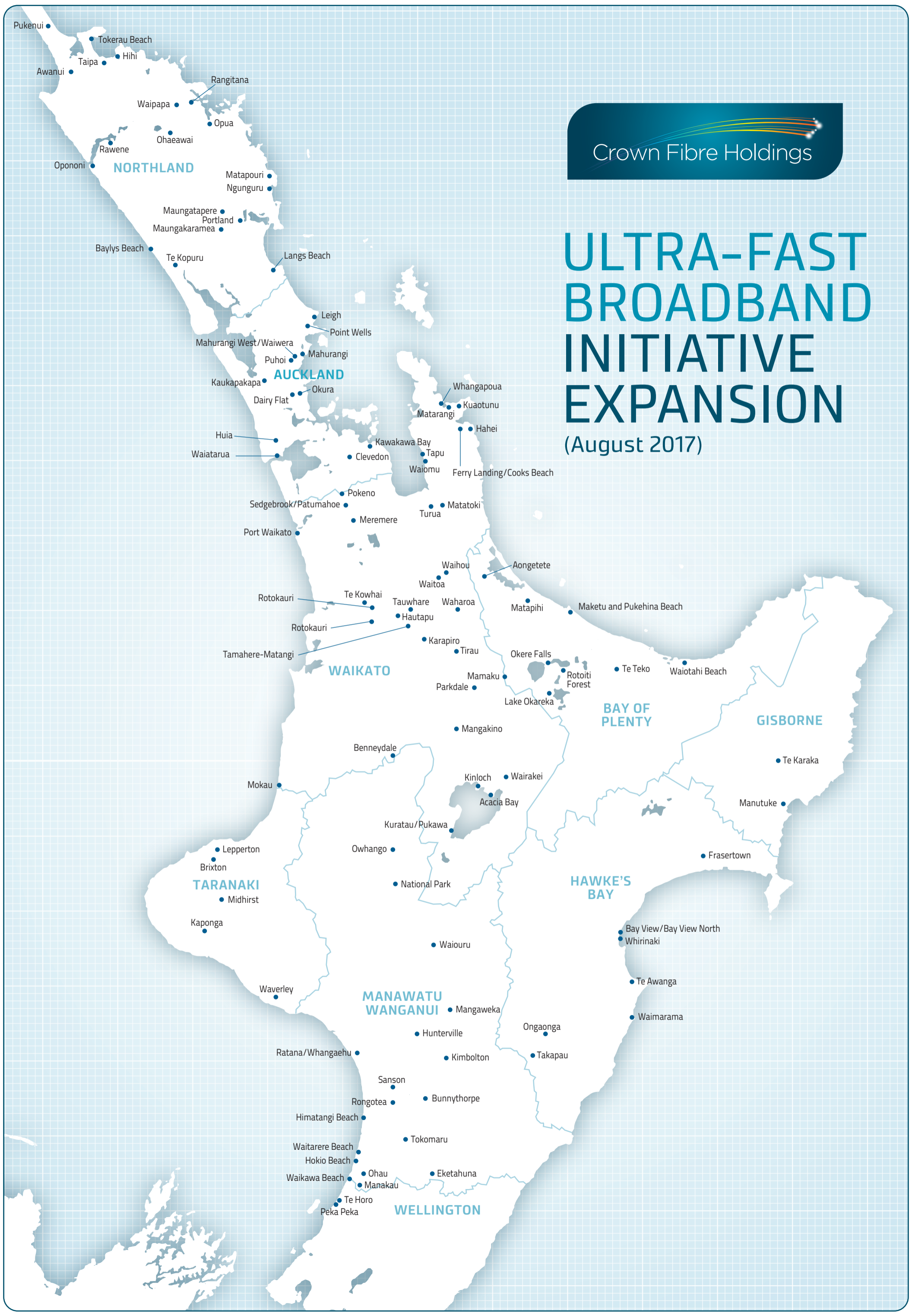
1. Regional Fact Sheets
2. North and South Island Ultra-Fast Broadband Expansion Map
3. Rural Broadband Initiative 2 and Mobile Blackspot Fund Map

For lists and maps of what has been announced, go to:

<http://www.mbie.govt.nz/info-services/sectors-industries/technology-communications/fast-broadband>

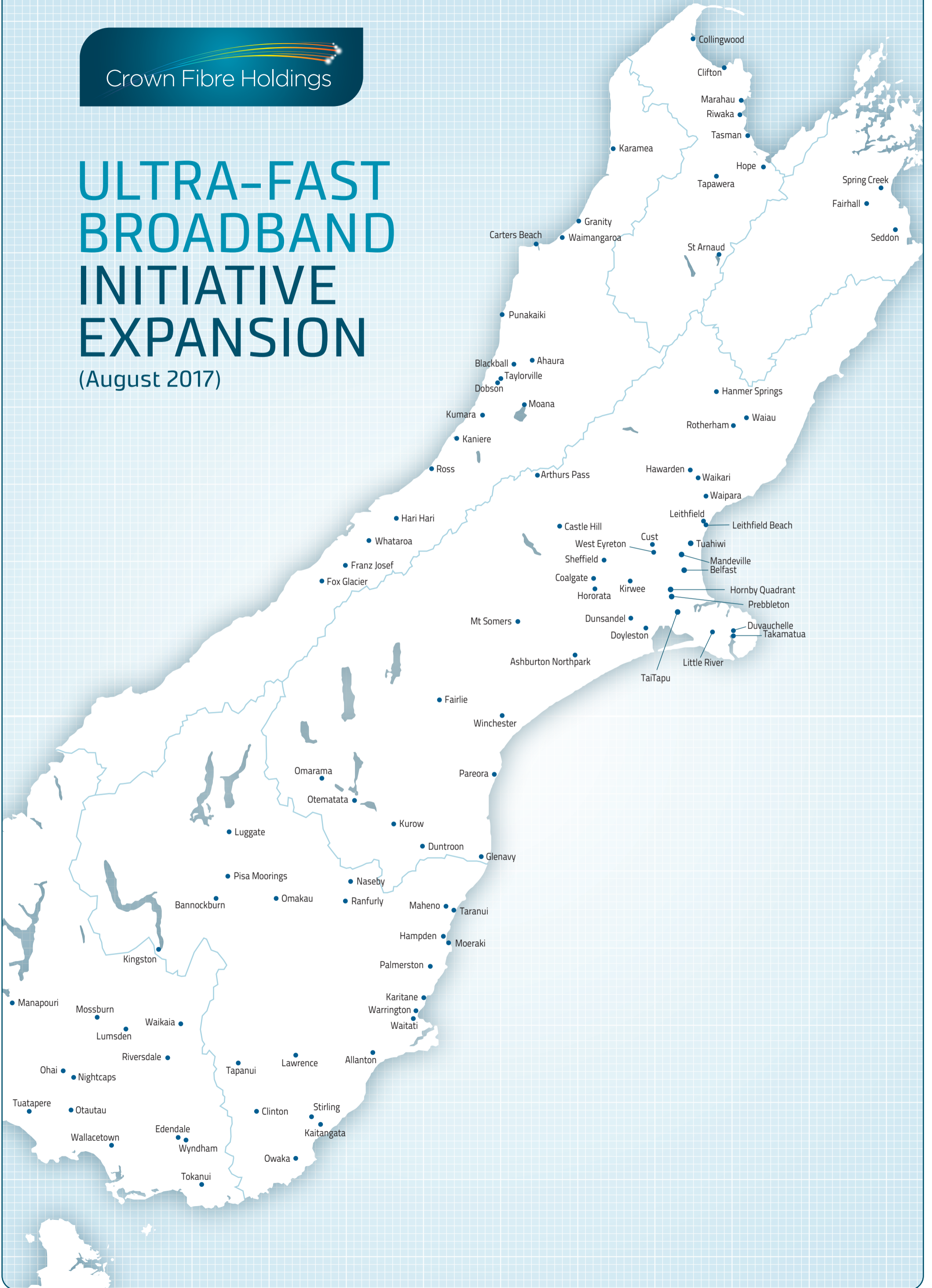
ULTRA-FAST BROADBAND INITIATIVE EXPANSION

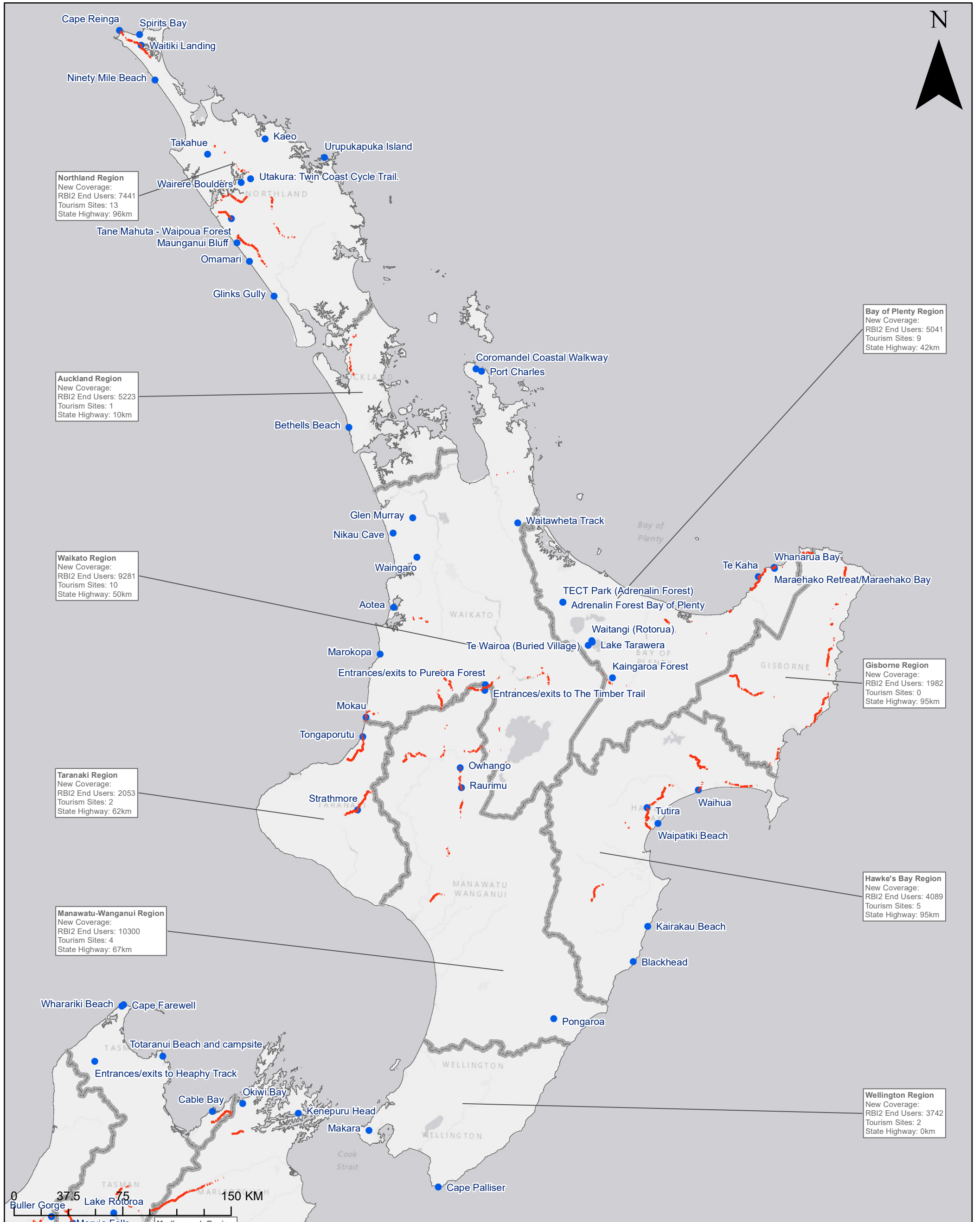
(August 2017)



ULTRA-FAST BROADBAND INITIATIVE EXPANSION

(August 2017)



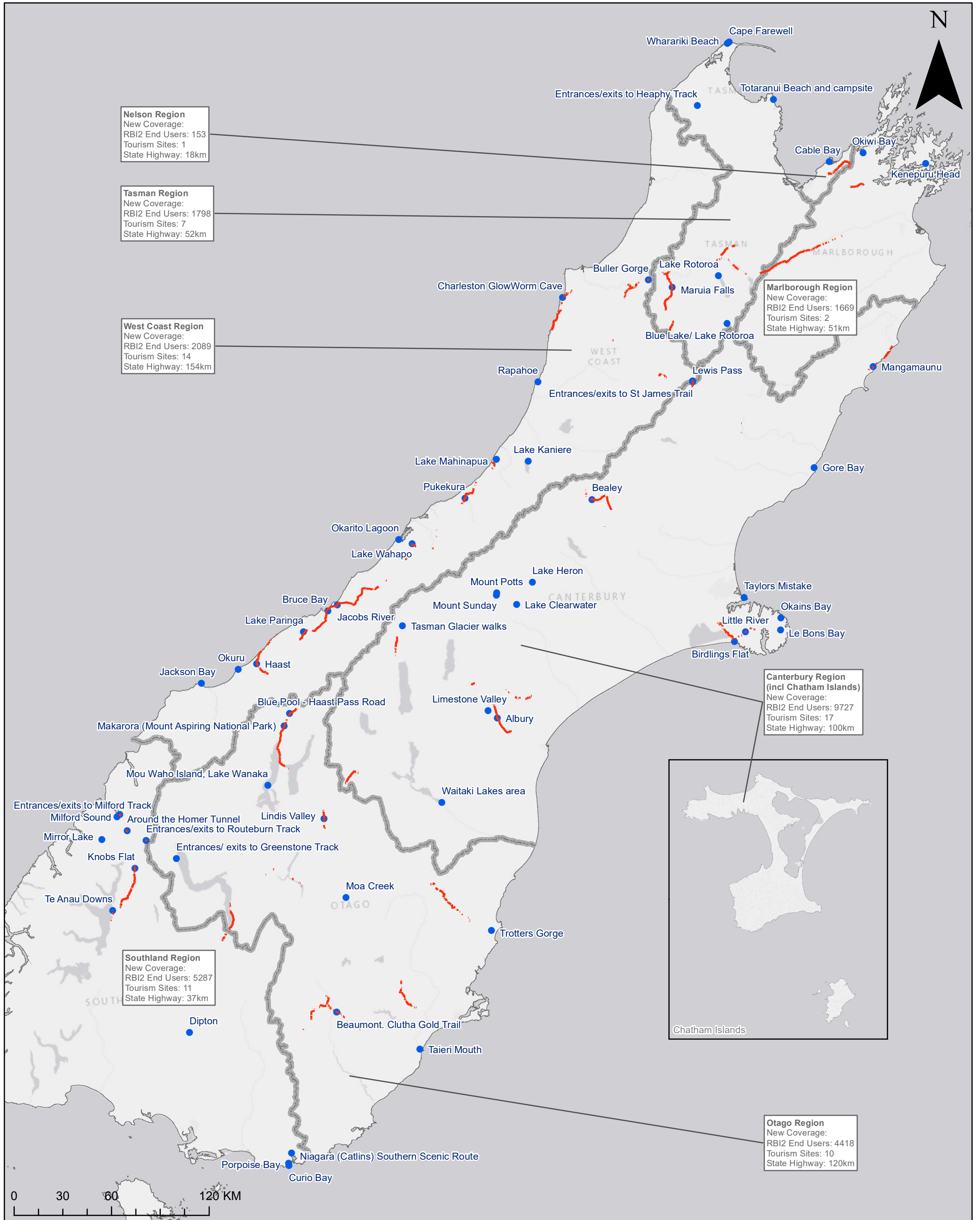


*The blue tourism areas and red State Highway coverage on this map are indicative, representing coverage expected to be achieved with the first \$150 million provided to the Rural Connectivity Group (RCG). The RCG contract will be expanded with another \$100 million to cover remaining tourism areas (not shown on this map) and remaining State Highway blackspots (not shown on this map).

**RBI2 end users are households and businesses. This projection is indicative and can fluctuate as the final locations for RBI2 sites are subject to land acquisition and consents.

**NORTH ISLAND
RBI2/Mobile Black Spots**

- State Highway New Coverage*
- Tourism New Coverage*



*The blue tourism areas and red State Highway coverage on this map are indicative, representing coverage expected to be achieved with the first \$150 million provided to the Rural Connectivity Group (RCG). The RCG contract will be expanded with another \$100 million to cover remaining tourism areas (not shown on this map) and remaining State Highway blackspots (not shown on this map).

**RBI2 end users are households and businesses. This projection is indicative and can fluctuate as the final locations for RBI2 sites are subject to land acquisition and consents.

**SOUTH ISLAND
RBI2/Mobile Black Spots**

- State Highway New Coverage*
- Tourism New Coverage*

New Zealand's broadband network – Factsheet

Ultra-Fast Broadband expansion and completion

Under the latest extension of the Government's Ultra-Fast Broadband programme, world-class broadband will be rolled out to an additional 190 towns and 46 fringe areas across New Zealand.

This will provide approximately 60,000 more New Zealand households and businesses with access to faster, more reliable internet.

The entire UFB build in New Zealand will be complete by the end of 2022.

The Government's total allocated investment in New Zealand's broadband connectivity is over \$2 billion.

Rural Broadband Initiative phase two

Under the second round of the Government's Rural Broadband Initiative, more than 70,000 additional rural households and businesses will receive new rural broadband coverage.

Exact coverage areas are to be determined. Crown Fibre Holdings will be working with partners to carry out more detailed planning over the coming months.

Mobile Black Spot Fund – State Highways & Tourism Areas

Mobile coverage will be extended to around 1,000 kilometres of state highways and more than 100 tourist areas across New Zealand.

Note: the information above is indicative only and subject to change. Crown Fibre Holdings will be working with partners to carry out more detailed planning over the coming months.

Regional Factsheets

Northland	3
Auckland	6
Waikato	8
Bay of Plenty	11
Gisborne	14
Taranaki	16
Hawke's Bay	18
Manawatu-Wanganui	20
Wellington	23
Nelson & Marlborough	25
Tasman	27
West Coast	29
Canterbury	32
Otago	35
Southland	38

Northland

Ultra-Fast Broadband expansion

Under the latest extension of the Government's Ultra-Fast Broadband programme, world-class broadband will be rolled out to an additional 19 towns and 2 fringe areas in Northland.

This will provide approximately 5,500 more Northland households and businesses with access to faster, more reliable internet.

New towns & fringe areas:

- Awanui
- Baylys Beach
- Dargaville Fringe
- Hihi
- Langs Beach/Waipu Cove
- Matapouri
- Maungakaramea
- Maungatapere
- Ngunguru
- Ohaeawai
- Opononi
- Opuā/Okīato
- Portland
- Pukenui
- Rangitana
- Rawene
- Taipa
- Te Kopuru
- Tokerau Beach/Whatuwhiwhi
- Waipapa
- Waipu South
- Chorus UFB2 fringe

The entire UFB build in Northland will be complete by the end of 2022, providing more than 47,000 Northland households and businesses with faster internet.

The Government's total investment in Northland UFB connectivity is \$71.2 million.

Rural Broadband Initiative phase two

Under the second round of the Government's Rural Broadband Initiative, a further 7,441 households and businesses in Northland will receive new rural broadband coverage.

Exact coverage areas are to be determined. Crown Fibre Holdings will be working with partners to carry out more detailed planning over the coming months.

Mobile Black Spot Fund – State Highways

Three state highways in Northland will receive new mobile coverage. Approximately 96kms will be covered across State Highway 1, 12 and 15.

Mobile Black Spot Fund – Tourism Areas

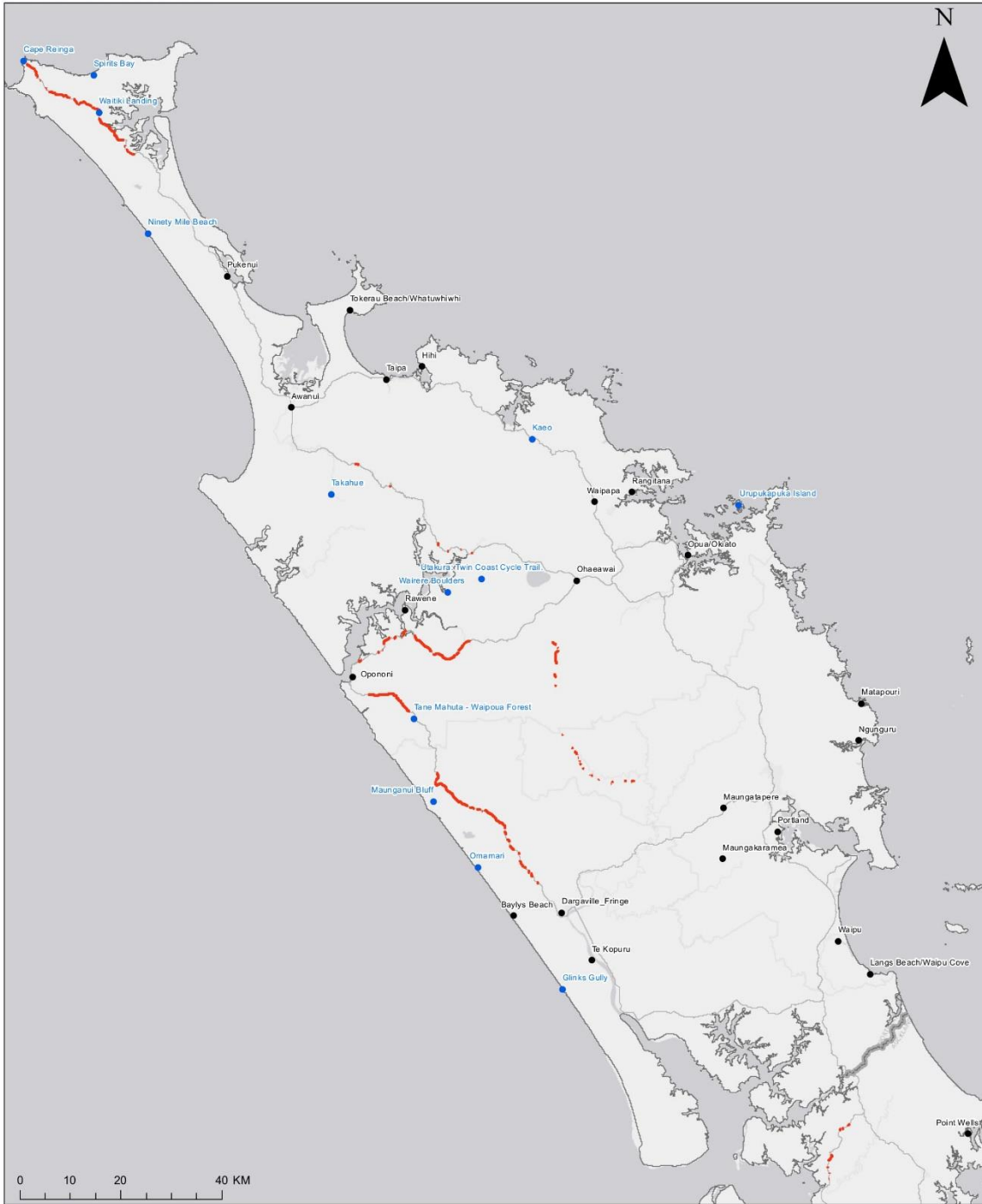
The Northland region will receive new mobile coverage for 13 tourism areas.

- Cape Reinga
- Glinks Gully
- Kaeo
- Maunganui Bluff
- Ninety Mile Beach
- Omamari
- Spirits Bay
- Takahue
- Tane Mahuta - Waipoua Forest
- Urupukapuka Island
- Uakura: Twin Coast Cycle Trail
- Wairere Boulders
- Waitiki Landing

Note: the information above is indicative only and subject to change. Crown Fibre Holdings will be working with partners to carry out more detailed planning over the coming months.



NORTHLAND REGION NEW COVERAGE



*The blue tourism areas and red State Highway coverage on this map are indicative, representing coverage expected to be achieved with the first \$150 million provided to the Rural Connectivity Group (RCG). The RCG contract will be expanded with another \$100 million to cover remaining tourism areas (not shown on this map) and remaining State Highway blackspots (not shown on this map).

**RBI2 end users are households and businesses. This projection is indicative and can fluctuate as the final locations for RBI2 sites are subject to land acquisition and consents.

21 new areas getting UFB
96 km State Highway Coverage
13 tourism locations
7,441 RBI2 End Users

- Tourism New Coverage*
- State Highway New Coverage*
- UFB2+

Auckland

Ultra-Fast Broadband expansion

Under the latest extension of the Government's Ultra-Fast Broadband programme, world-class broadband will be rolled out to an additional 13 towns and 2 fringe areas in the Auckland region.

This will provide approximately 4,000 more Auckland households and businesses with access to faster, more reliable internet.

New towns & fringe areas:

- Bombay/Paparata Rd
- Clevedon
- Dairy Flat/Goodland
- Flat Bush
- Huia
- Kaukapakapa
- Kawakawa Bay
- Leigh
- Mahurangi
- Mahurangi West/Waiwera
- Okura
- Point Wells
- Puhoi
- Sedgebrook/Patumahoe
- Waiatarua/Spragg Bush/Parkinsons lookout
- Chorus UFB2 fringe

The entire UFB build in Auckland will be complete by the end of 2022, providing more than 469,000 Auckland households and businesses with faster internet.

The Government's total investment in Auckland UFB connectivity is \$455.3 million.

Rural Broadband Initiative phase two

Under the second round of the Government's Rural Broadband Initiative, a further 5,223 households and businesses in Auckland will receive new rural broadband coverage.

Exact coverage areas are to be determined. Crown Fibre Holdings will be working with partners to carry out more detailed planning over the coming months.

Mobile Black Spot Fund – State Highways

One state highway in Auckland will receive new mobile coverage. Approximately 10kms will be covered across State Highway 16.

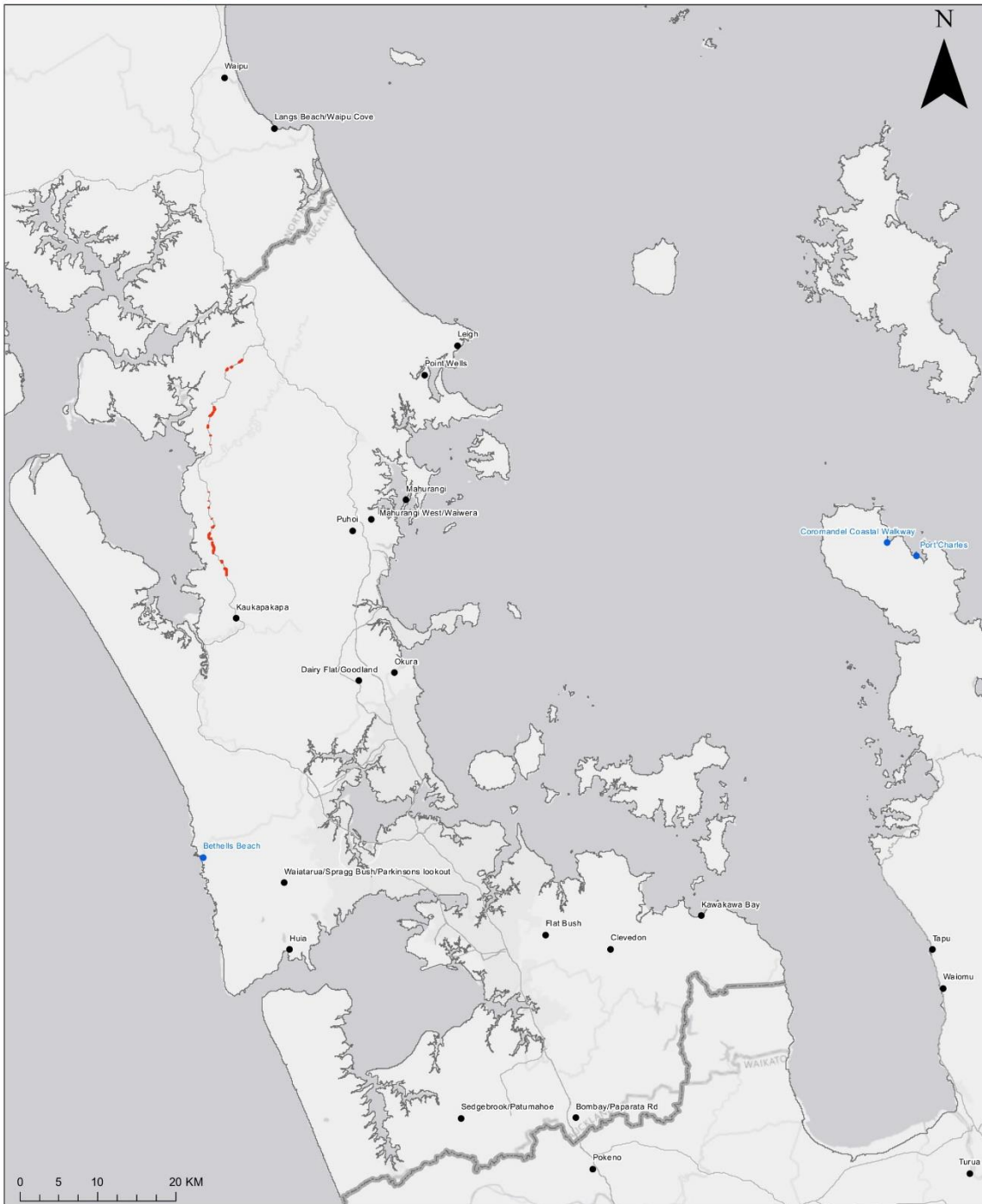
Mobile Black Spot Fund – Tourism Areas

One tourism area in Auckland – Bethells Beach - will receive new mobile coverage.

Note: the information above is indicative only and subject to change. Crown Fibre Holdings will be working with partners to carry out more detailed planning over the coming months.



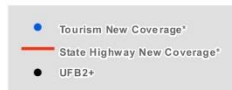
AUCKLAND REGION NEW COVERAGE



*The blue tourism areas and red State Highway coverage on this map are indicative, representing coverage expected to be achieved with the first \$150 million provided to the Rural Connectivity Group (RCG). The RCG contract will be expanded with another \$100 million to cover remaining tourism areas (not shown on this map) and remaining State Highway blackspots (not shown on this map).

**RBI2 end users are households and businesses. This projection is indicative and can fluctuate as the final locations for RBI2 sites are subject to land acquisition and consents.

15 new areas getting UFB
10 km State Highway Coverage
1 tourism location
5,223 RBI2 End Users



Waikato

Ultra-Fast Broadband expansion

Under the latest extension of the Government's Ultra-Fast Broadband programme, world-class broadband will be rolled out to an additional 23 towns and 11 fringe areas in Waikato.

This will provide approximately 12,500 Waikato households and businesses with access to faster, more reliable internet.

New towns & fringe areas:

- Acacia Bay
- Benneydale
- Cambridge North
- Ferry Landing/Cooks Beach
- Hahei
- Hautapu
- Karapiro
- Kihikihi
- Kinloch
- Kuaotunu
- Kuratau/Pukawa
- Mamaku
- Mangakino
- Matarangi
- Matatoki
- Meremere
- Mokau
- Parkdale
- Pokeno
- Port Waikato
- Rotokauri
- Tamahere/Matangi/Tauwhare Pa
- Tapu
- Tauwhare
- Te Kowhai
- Temple View
- Tirau
- Turua
- Waharoa
- Waihou
- Waiomu
- Wairakei Village/Wairakei
- Waitoa
- Whangapoua
- Chorus UFB2 fringe

The entire UFB build in Waikato will be complete by the end of 2022, providing more than 156,000 Waikato households and businesses with faster internet.

The Government's total investment in Waikato UFB connectivity is \$199.3 million.

Rural Broadband Initiative phase two

Under the second round of the Government's Rural Broadband Initiative, a further 9,281 households and businesses in Waikato will receive new rural broadband coverage.

Exact coverage areas are to be determined. Crown Fibre Holdings will be working with partners to carry out more detailed planning over the coming months.

Mobile Black Spot Fund – State Highways

Nine state highways in Waikato will receive new mobile coverage. Approximately 50kms will be covered across State Highways 1, 3, 4, 25, 30, 31, 32, 38 and 41.

Mobile Black Spot Fund – Tourism Areas

The Waikato region will receive new mobile coverage for 10 tourism areas:

- Aotea
- Coromandel Coastal Walkway
- Entrances/exits to Pureora Forest
- Glen Murray
- Marokopa
- Mokau
- Nikau Cave
- Port Charles
- Waingaro
- Waitawheta Track

Note: the information above is indicative only and subject to change. Crown Fibre Holdings will be working with partners to carry out more detailed planning over the coming months.



WAIKATO REGION NEW COVERAGE



34 new areas getting UFB
50 km State Highway Coverage
10 tourism locations
9,281 RB12 End Users

- Tourism New Coverage*
- State Highway New Coverage*
- UFB2+

*The blue tourism areas and red State Highway coverage on this map are indicative, representing coverage expected to be achieved with the first \$150 million provided to the Rural Connectivity Group (RCG). The RCG contract will be expanded with another \$100 million to cover remaining tourism areas (not shown on this map) and remaining State Highway blackspots (not shown on this map).

**RB12 end users are households and businesses. This projection is indicative and can fluctuate as the final locations for RB12 sites are subject to land acquisition and consents.

Bay of Plenty

Ultra-Fast Broadband expansion

Under the latest extension of the Government's Ultra-Fast Broadband programme, world-class broadband will be rolled out to an additional 7 towns and 3 fringe areas in Bay of Plenty.

This will provide approximately 2,700 Bay of Plenty households and businesses with access to faster, more reliable internet.

New towns & fringe areas:

- Aongetete
- Kukumoa/Waiotahi Beach
- Lake Okareka/Okareka
- Maketu/Pukehina Beach
- Matapihi
- Okere Falls
- Omokoroa
- Rotoiti Forest
- Te Puna (Minden)
- Te Teko
- Chorus UFB2 fringe

The entire UFB build in Bay of Plenty will be complete by the end of 2022, providing more than 102,000 Bay of Plenty households and businesses with faster internet.

The Government's total investment in Bay of Plenty UFB connectivity is \$110.7 million.

Rural Broadband Initiative phase two

Under the second round of the Government's Rural Broadband Initiative, a further 5,041 households and businesses in Bay of Plenty will receive new rural broadband coverage.

Exact coverage areas are to be determined. Crown Fibre Holdings will be working with partners to carry out more detailed planning over the coming months.

Mobile Black Spot Fund – State Highways

Three state highways in Bay of Plenty will receive new mobile coverage. Approximately 42kms will be covered across State Highways 2, 35 and 38.

Mobile Black Spot Fund – Tourism Areas

The Bay of Plenty region will receive new mobile coverage for 9 tourism areas.

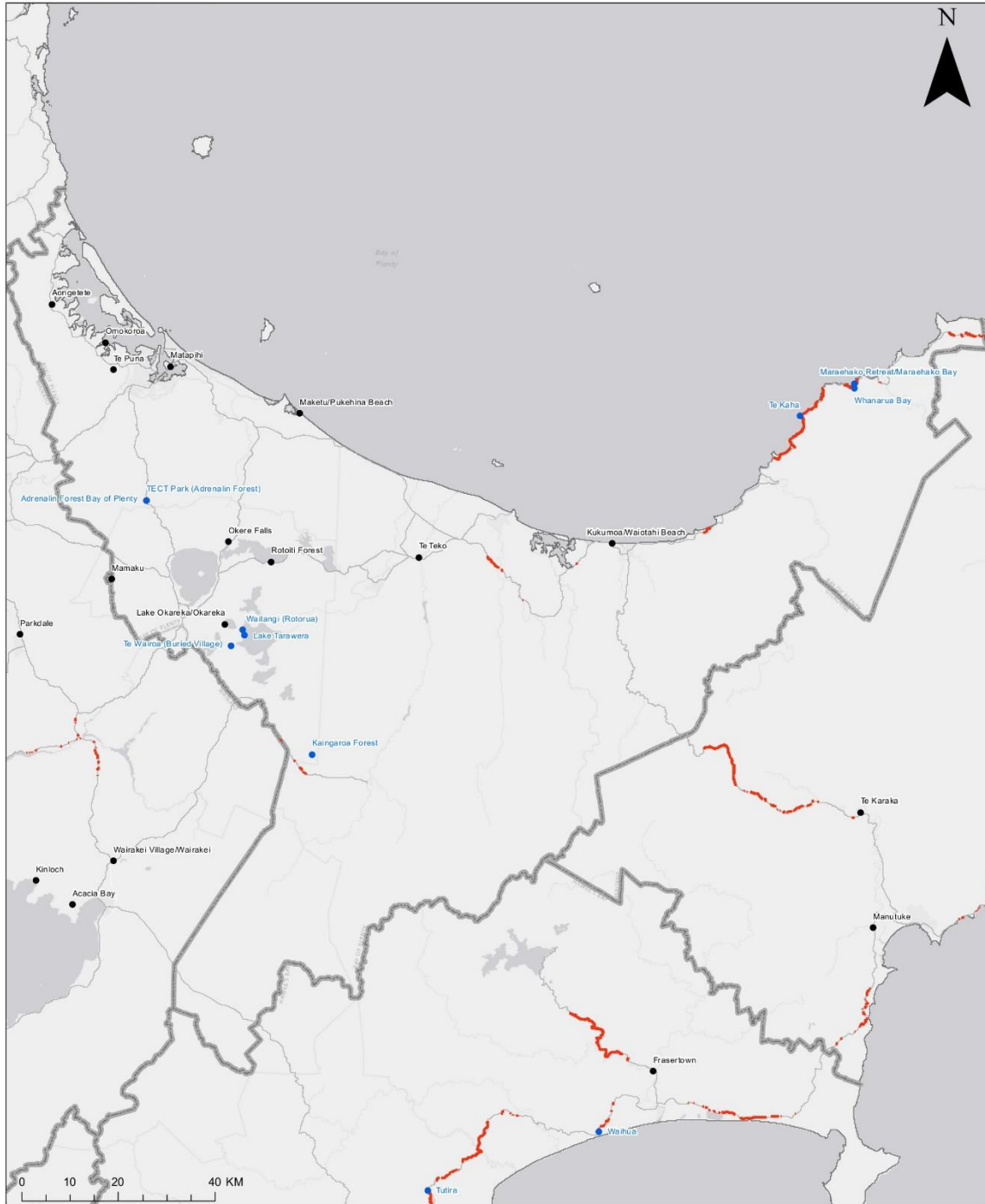
- Adrenalin Forest Bay of Plenty
- Kaingaroa Forest
- Lake Tarawera
- Maraehako Retreat/Maraehako Bay
- Te Kaha
- Te Wairoa (Buried Village)
- TECT Park (Adrenalin Forest)

- Waitangi (Rotorua)
- Whanarua Bay

Note: the information above is indicative only and subject to change. Crown Fibre Holdings will be working with partners to carry out more detailed planning over the coming months.



BAY OF PLENTY REGION NEW COVERAGE



*The blue tourism areas and red State Highway coverage on this map are indicative, representing coverage expected to be achieved with the first \$150 million provided to the Rural Connectivity Group (RCG). The RCG contract will be expanded with another \$100 million to cover remaining tourism areas (not shown on this map) and remaining State Highway blackspots (not shown on this map).

**RB2 end users are households and businesses. This projection is indicative and can fluctuate as the final locations for RB2 sites are subject to land acquisition and consents.

10 new areas getting UFB
42 km State Highway Coverage
9 tourism locations
5,041 RB2 End Users

- Tourism New Coverage*
- State Highway New Coverage*
- UFB2+

Gisborne

Ultra-Fast Broadband expansion

Under the latest extension of the Government's Ultra-Fast Broadband programme, world-class broadband will be rolled out to an additional 2 towns in the Gisborne region.

This will provide approximately 200 more Gisborne households and businesses with access to faster, more reliable internet.

New towns & fringe areas:

- Manutuke
- Te Karaka
- Chorus UFB2 fringe

The entire UFB build in Gisborne will be complete by the end of 2022, providing more than 15,000 Gisborne households and businesses with faster internet.

The Government's total investment in Gisborne and Hawke's Bay UFB connectivity is \$74.9 million.

Rural Broadband Initiative phase two

Under the second round of the Government's Rural Broadband Initiative, a further 1,982 households and businesses in Gisborne will receive new rural broadband coverage.

Exact coverage areas are to be determined. Crown Fibre Holdings will be working with partners to carry out more detailed planning over the coming months.

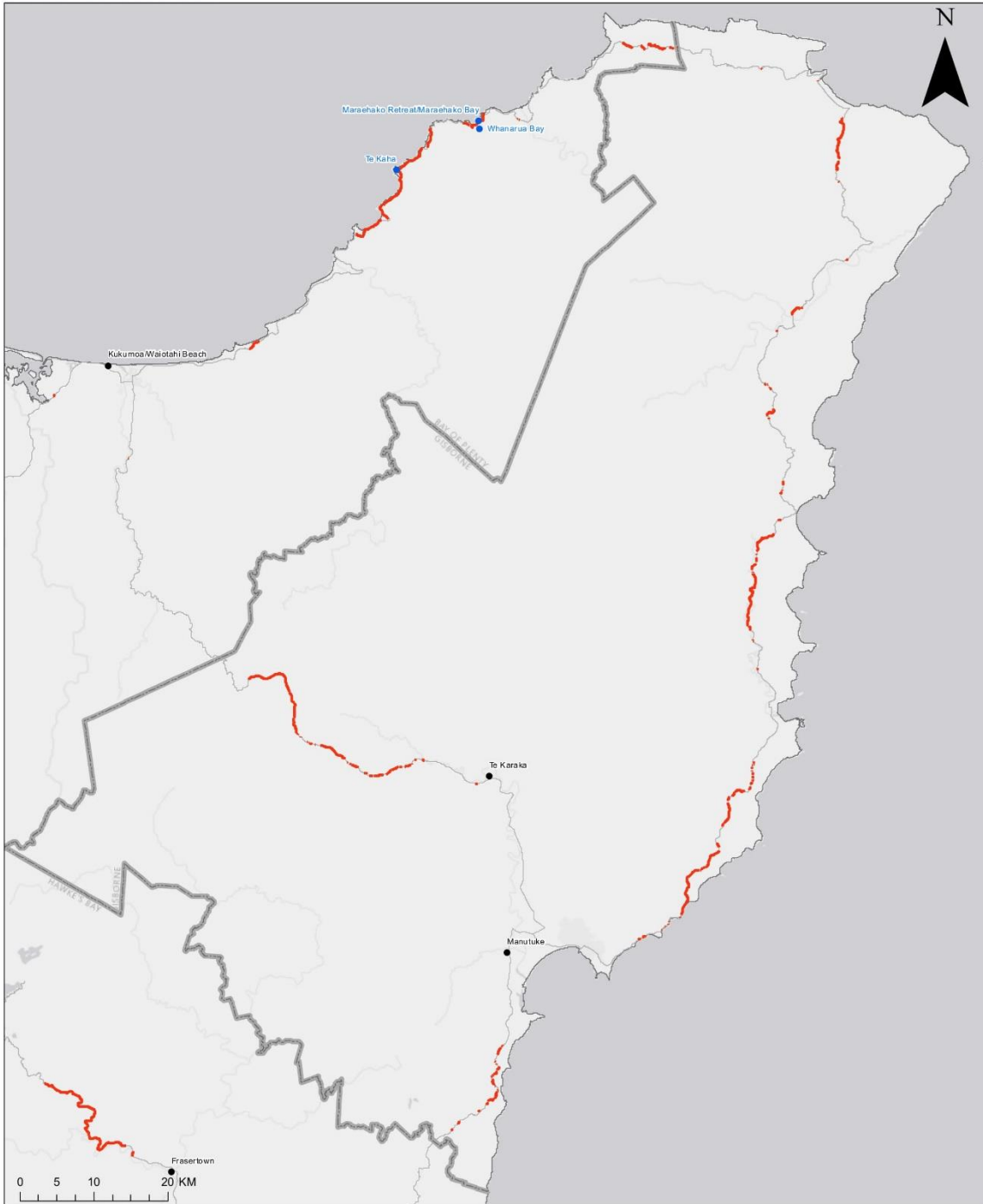
Mobile Black Spot Fund – State Highways

Two state highways in Gisborne will receive new mobile coverage. Approximately 86kms will be covered across State Highways 2 and 35.

Note: the information above is indicative only and subject to change. Crown Fibre Holdings will be working with partners to carry out more detailed planning over the coming months.



GISBORNE REGION NEW COVERAGE



*The blue tourism areas and red State Highway coverage on this map are indicative, representing coverage expected to be achieved with the first \$150 million provided to the Rural Connectivity Group (RCG). The RCG contract will be expanded with another \$100 million to cover remaining tourism areas (not shown on this map) and remaining State Highway blackspots (not shown on this map).

**RBI2 end users are households and businesses. This projection is indicative and can fluctuate as the final locations for RBI2 sites are subject to land acquisition and consents.

**2 new areas getting UFB
95 km State Highway Coverage
1,982 RBI2 End Users**

- Tourism New Coverage*
- State Highway New Coverage*
- UFB2+

Taranaki

Ultra-Fast Broadband expansion

Under the latest extension of the Government's Ultra-Fast Broadband programme, world-class broadband will be rolled out to an additional 4 towns and 2 fringe areas in Taranaki.

This will provide approximately 1,000 more Taranaki households and businesses with access to faster, more reliable internet.

New towns & fringe areas:

- Brixton
- Kaponga
- Lepperton
- Midhirst
- The Mercade
- Waverley
- Chorus UFB2 fringe

The entire UFB build in Taranaki will be complete by the end of 2022, providing more than 40,000 Taranaki households and businesses with faster internet.

The Government's total investment in Taranaki UFB connectivity is \$33.6 million.

Rural Broadband Initiative phase two

Under the second round of the Government's Rural Broadband Initiative, a further 2,053 households and businesses in Taranaki will receive new rural broadband coverage.

Exact coverage areas are to be determined. Crown Fibre Holdings will be working with partners to carry out more detailed planning over the coming months.

Mobile Black Spot Fund – State Highways

Two state highways in Taranaki will receive new mobile coverage. Approximately 62kms will be covered across State Highways 3 and 43.

Mobile Black Spot Fund – Tourism Areas

The Taranaki region will receive new mobile coverage for 2 tourism areas:

- Strathmore
- Tongaporutu

Note: the information above is indicative only and subject to change. Crown Fibre Holdings will be working with partners to carry out more detailed planning over the coming months.



TARANAKI REGION NEW COVERAGE



*The blue tourism areas and red State Highway coverage on this map are indicative, representing coverage expected to be achieved with the first \$150 million provided to the Rural Connectivity Group (RCG). The RCG contract will be expanded with another \$100 million to cover remaining tourism areas (not shown on this map) and remaining State Highway blackspots (not shown on this map).

**RBIZ end users are households and businesses. This projection is indicative and can fluctuate as the final locations for RBIZ sites are subject to land acquisition and consents.

6 new areas getting UFB
62 km State Highway Coverage
2 tourism locations
2,053 RBIZ End Users

- Tourism New Coverage*
- State Highway New Coverage*
- UFB2+

Hawke's Bay

Ultra-Fast Broadband expansion

Under the latest extension of the Government's Ultra-Fast Broadband programme, world-class broadband will be rolled out to an additional 6 towns and 1 fringe area in the Hawke's Bay.

This will provide approximately 1,500 more Hawke's Bay households and businesses with access to faster, more reliable internet.

New towns & fringe areas:

- Bay View/Bay View North
- Frasertown
- Ongaonga
- Takapau
- Te Awanga
- Waimarama
- Whirinaki
- Chorus UFB2 fringe

The entire UFB build in Hawke's Bay will be complete by the end of 2022, providing more than 57,000 Hawke's Bay households and businesses with faster internet.

The Government's total investment in Hawke's Bay and Gisborne UFB connectivity is \$74.9 million.

Rural Broadband Initiative phase two

Under the second round of the Government's Rural Broadband Initiative, a further 4,089 households and businesses in Hawke's Bay will receive new rural broadband coverage.

Exact coverage areas are to be determined. Crown Fibre Holdings will be working with partners to carry out more detailed planning over the coming months.

Mobile Black Spot Fund – State Highways

Four state highways in Hawke's Bay will receive new mobile coverage. Approximately 95kms will be covered across State Highway 2, 5, 38 and 50.

Mobile Black Spot Fund – Tourism Areas

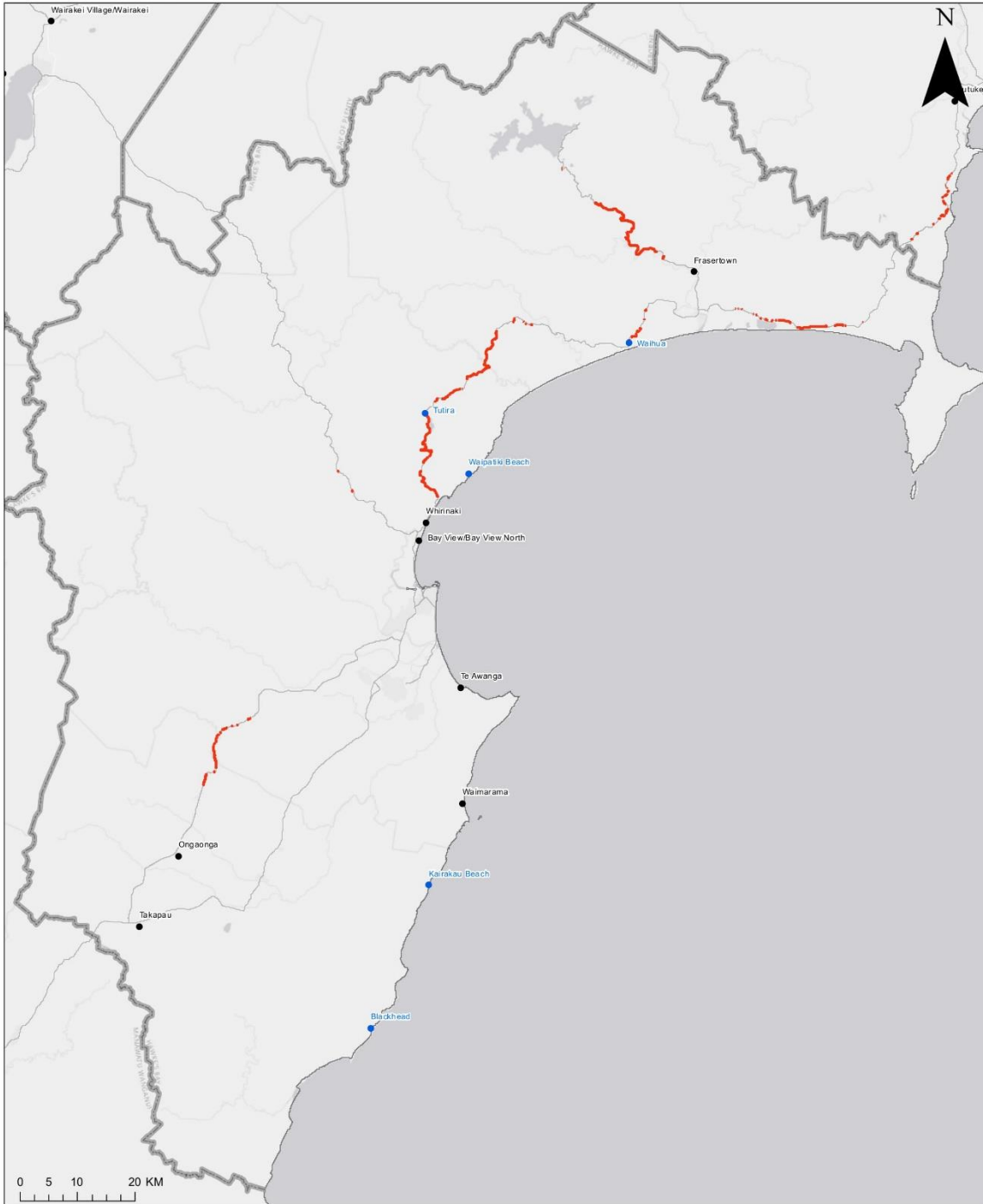
The Hawke's Bay region will receive new mobile coverage for 5 tourism areas.

- Blackhead
- Kairakau Beach
- Tutira
- Waihua
- Waipatiki Beach

Note: the information above is indicative only and subject to change. Crown Fibre Holdings will be working with partners to carry out more detailed planning over the coming months.



HAWKE'S BAY REGION NEW COVERAGE



7 new areas getting UFB
95 km State Highway Coverage
5 tourism locations
4,089 RB12 End Users

- Tourism New Coverage*
- State Highway New Coverage*
- UFB2+

*The blue tourism areas and red State Highway coverage on this map are indicative, representing coverage expected to be achieved with the first \$150 million provided to the Rural Connectivity Group (RCG). The RCG contract will be expanded with another \$100 million to cover remaining tourism areas (not shown on this map) and remaining State Highway blackspots (not shown on this map).

**RB12 end users are households and businesses. This projection is indicative and can fluctuate as the final locations for RB12 sites are subject to land acquisition and consents.

Manawatu-Wanganui

Ultra-Fast Broadband expansion

Under the latest extension of the Government's Ultra-Fast Broadband programme, world-class broadband will be rolled out to an additional 18 towns in Manawatu-Wanganui.

This will provide approximately 5,000 more Manawatu-Wanganui households and businesses with access to faster, more reliable internet.

New towns & fringe areas:

- Bunnythorpe
- Eketahuna
- Himatangi Beach
- Hokio Beach
- Hunterville
- Kimbolton
- Manakau
- Mangaweka
- National Park
- Ohau
- Owhango
- Ratana/Whangaehu
- Rongotea
- Sanson
- Tokomaru
- Waikawa Beach
- Waiouru
- Waitarere/Waitarere Beach
- Chorus UFB2 fringe

The entire UFB build in Manawatu-Wanganui will be complete by the end of 2022, providing more than 91,000 Manawatu-Wanganui households and businesses with faster internet.

The Government's total investment in Manawatu-Wanganui UFB connectivity is \$104.4 million.

Rural Broadband Initiative phase two

Under the second round of the Government's Rural Broadband Initiative, a further 10,300 households and businesses in Manawatu-Wanganui will receive new rural broadband coverage.

Exact coverage areas are to be determined. Crown Fibre Holdings will be working with partners to carry out more detailed planning over the coming months.

Mobile Black Spot Fund – State Highways

Four state highways in Manawatu-Wanganui will receive new mobile coverage. Approximately 67kms will be covered across State Highway 4, 30, 41 and 43.

Mobile Black Spot Fund – Tourism Areas

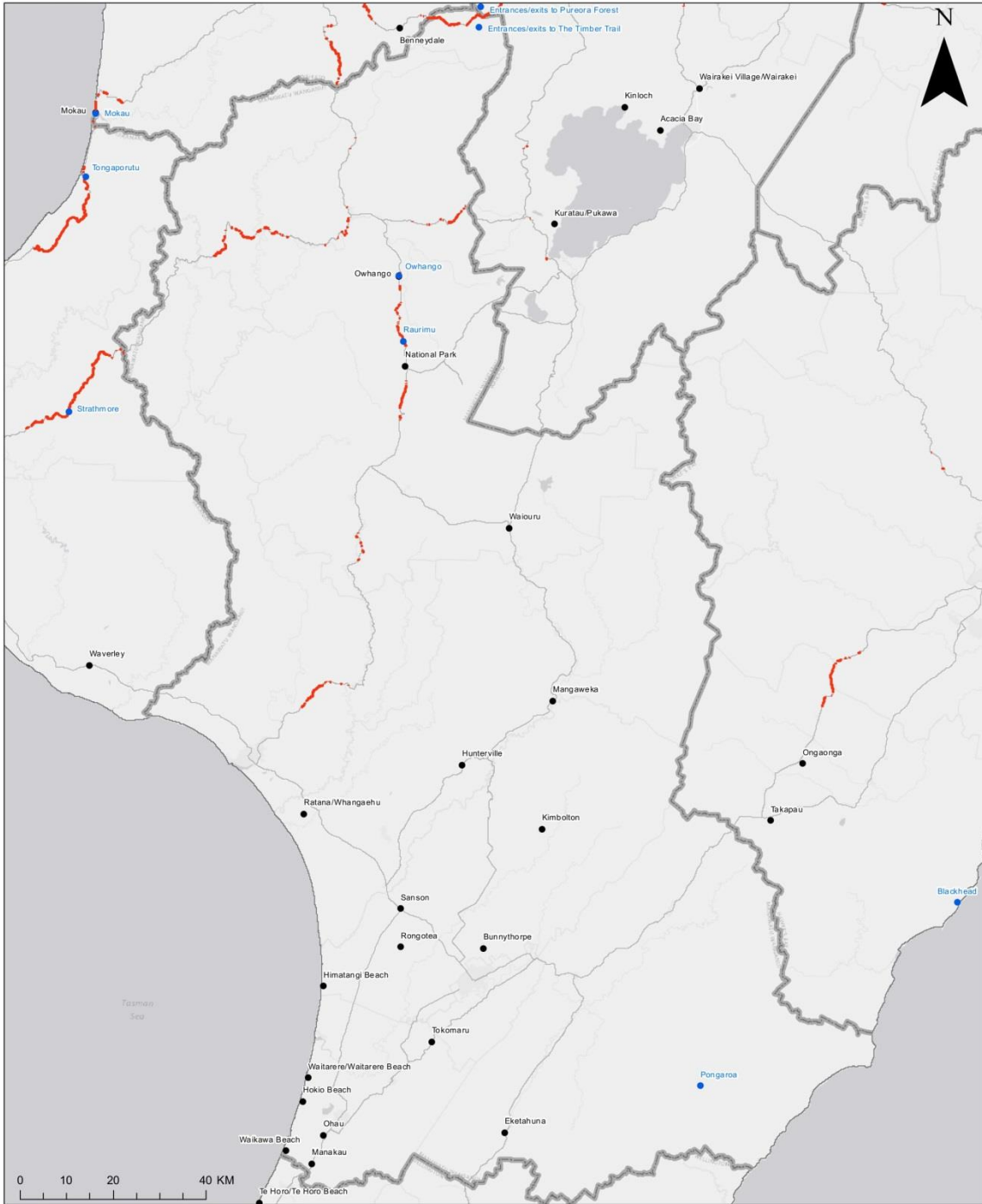
The Manawatu-Wanganui region will receive new mobile coverage for 4 tourism areas.

- Entrances/exits to The Timber Trail
- Owhango
- Pongaroa
- Raurimu

Note: the information above is indicative only and subject to change. Crown Fibre Holdings will be working with partners to carry out more detailed planning over the coming months.



MANAWATU-WANGANUI REGION NEW COVERAGE



*The blue tourism areas and red State Highway coverage on this map are indicative, representing coverage expected to be achieved with the first \$150 million provided to the Rural Connectivity Group (RCG). The RCG contract will be expanded with another \$100 million to cover remaining tourism areas (not shown on this map) and remaining State Highway blackspots (not shown on this map).

**RB2 end users are households and businesses. This projection is indicative and can fluctuate as the final locations for RB2 sites are subject to land acquisition and consents.

18 new areas getting UFB
67 km State Highway Coverage
4 tourism locations
10,300 RB2 End Users

- Tourism New Coverage*
- State Highway New Coverage*
- UFB2+

Wellington

Ultra-Fast Broadband expansion

Under the latest extension of the Government's Ultra-Fast Broadband programme, world-class broadband will be rolled out to an additional 3 towns in the Wellington region.

This will provide approximately 800 more Wellington households and businesses with access to faster, more reliable internet.

New towns & fringe areas:

- Otaihanga/Nikau Valley
- Peka Peka
- Te Horo/Te Horo Beach
- Chorus UFB2 fringe

The entire UFB build in Wellington will be complete by the end of 2022, providing more than 192,000 Wellington households and businesses with faster internet.

The Government's total investment in Wellington UFB connectivity is \$188.2 million.

Rural Broadband Initiative phase two

Under the second round of the Government's Rural Broadband Initiative, a further 3,742 households and businesses in Wellington will receive new rural broadband coverage.

Exact coverage areas are to be determined. Crown Fibre Holdings will be working with partners to carry out more detailed planning over the coming months.

Mobile Black Spot Fund – Tourism Areas

The Wellington region will receive new mobile coverage for 2 tourism areas.

- Cape Palliser
- Makara

Note: the information above is indicative only and subject to change. Crown Fibre Holdings will be working with partners to carry out more detailed planning over the coming months.



WELLINGTON REGION NEW COVERAGE



*The blue tourism areas and red State Highway coverage on this map are indicative, representing coverage expected to be achieved with the first \$150 million provided to the Rural Connectivity Group (RCG). The RCG contract will be expanded with another \$100 million to cover remaining tourism areas (not shown on this map) and remaining State Highway blackspots (not shown on this map).

**RBI2 end users are households and businesses. This projection is indicative and can fluctuate as the final locations for RBI2 sites are subject to land acquisition and consents.

3 new areas getting UFB
2 tourism locations
3,742 RBI2 End Users

- Tourism New Coverage*
- State Highway New Coverage*
- UFB2+

Nelson & Marlborough

Ultra-Fast Broadband expansion

Under the latest extension of the Government's Ultra-Fast Broadband programme, world-class broadband will be rolled out to an additional 3 towns and 1 fringe area in Nelson & Marlborough.

This will provide approximately 700 more Nelson & Marlborough households and businesses with access to faster, more reliable internet.

New towns & fringe areas:

- Blenheim Fringe/Old Renwick
- Fairhall
- Seddon
- Spring Creek
- Chorus UFB2 fringe (Marlborough region)
- Chorus UFB2 fringe (Nelson region)

The entire UFB build in Nelson & Marlborough will be complete by the end of 2022, providing more than 46,000 Nelson & Marlborough households and businesses with faster internet.

The Government's total investment in Nelson & Marlborough UFB connectivity is \$45.5 million.

Rural Broadband Initiative phase two

Under the second round of the Government's Rural Broadband Initiative, a further 1,822 households and businesses in Nelson & Marlborough will receive new rural broadband coverage.

Exact coverage areas are to be determined. Crown Fibre Holdings will be working with partners to carry out more detailed planning over the coming months.

Mobile Black Spot Fund – State Highways

Two state highways in Nelson & Marlborough will receive new mobile coverage. Approximately 69kms will be covered across State Highway 63 and 6.

Mobile Black Spot Fund – Tourism Areas

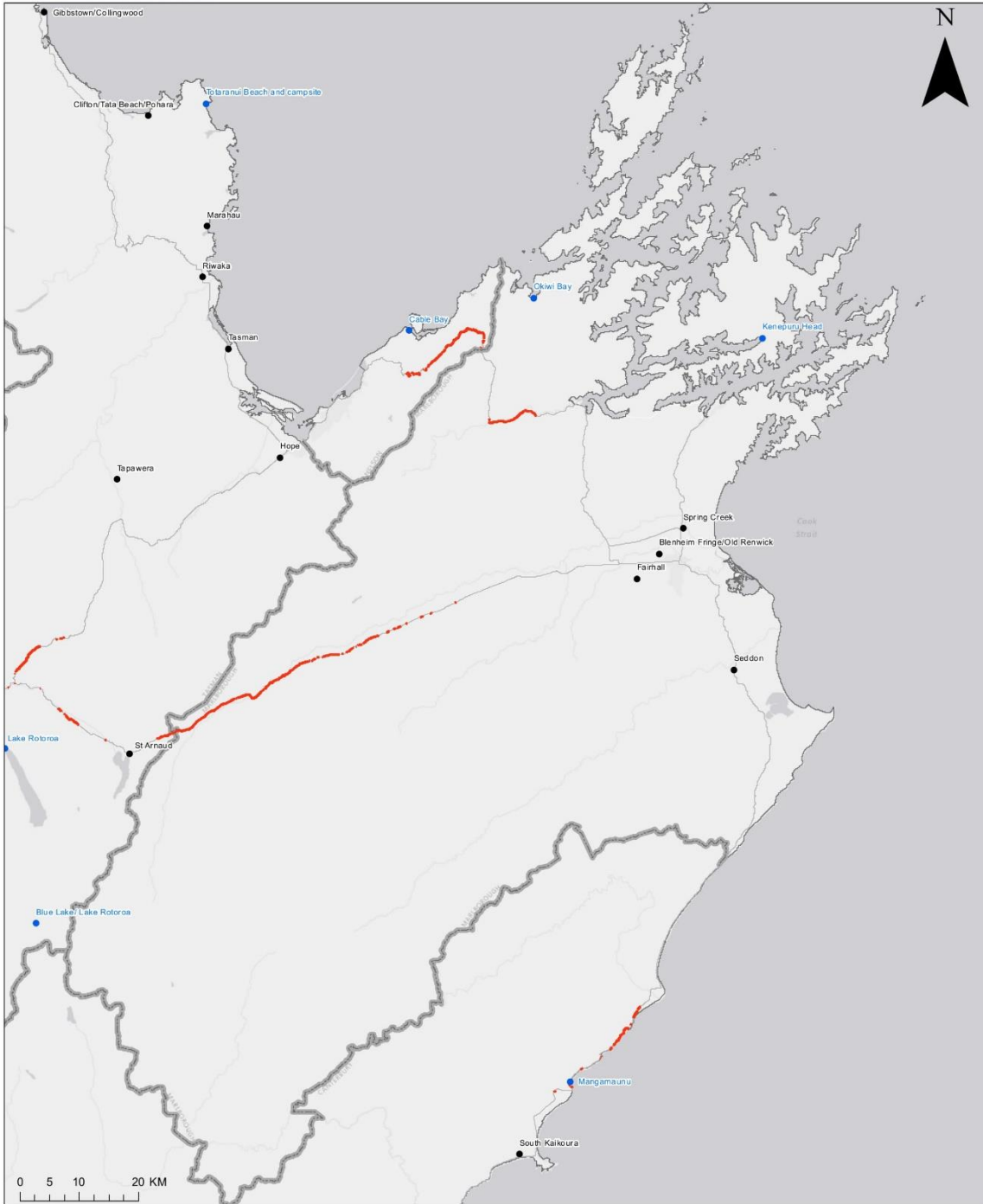
The Nelson & Marlborough region will receive new mobile coverage for 3 tourism areas.

- Cable Bay
- Kenepuru Head
- Okiwi Bay

Note: the information above is indicative only and subject to change. Crown Fibre Holdings will be working with partners to carry out more detailed planning over the coming months.



NELSON - MARLBOROUGH REGION NEW COVERAGE



*The blue tourism areas and red State Highway coverage on this map are indicative, representing coverage expected to be achieved with the first \$150 million provided to the Rural Connectivity Group (RCG). The RCG contract will be expanded with another \$100 million to cover remaining tourism areas (not shown on this map) and remaining State Highway blackspots (not shown on this map).

**RBI2 end users are households and businesses. This projection is indicative and can fluctuate as the final locations for RBI2 sites are subject to land acquisition and consents.

4 new areas getting UFB
69 km State Highway Coverage
3 tourism locations
1,822 RBI2 End Users

- Tourism New Coverage*
- State Highway New Coverage*
- UFB2+

Tasman

Ultra-Fast Broadband expansion

Under the latest extension of the Government's Ultra-Fast Broadband programme, world-class broadband will be rolled out to an additional 7 towns and 1 fringe area in Tasman.

This will provide approximately 1,800 more Tasman households and businesses with access to faster, more reliable internet.

New towns & fringe areas:

- Clifton/Tata Beach/Pohara
- Gibbstown/Collingwood
- Hope
- Marahau
- Riwaka
- St Arnaud
- Tapawera
- Tasman
- Chorus UFB2 fringe

The entire UFB build in Tasman will be complete by the end of 2022, providing more than 8,000 Tasman households and businesses with faster internet.

The Government's total investment in Tasman and West Coast UFB connectivity is \$31.9 million.

Rural Broadband Initiative phase two

Under the second round of the Government's Rural Broadband Initiative, a further 1,798 households and businesses in Tasman will receive new rural broadband coverage.

Exact coverage areas are to be determined. Crown Fibre Holdings will be working with partners to carry out more detailed planning over the coming months.

Mobile Black Spot Fund – State Highways

Three state highways in Tasman will receive new mobile coverage. Approximately 52kms will be covered across State Highway 6, 63 and 65.

Mobile Black Spot Fund – Tourism Areas

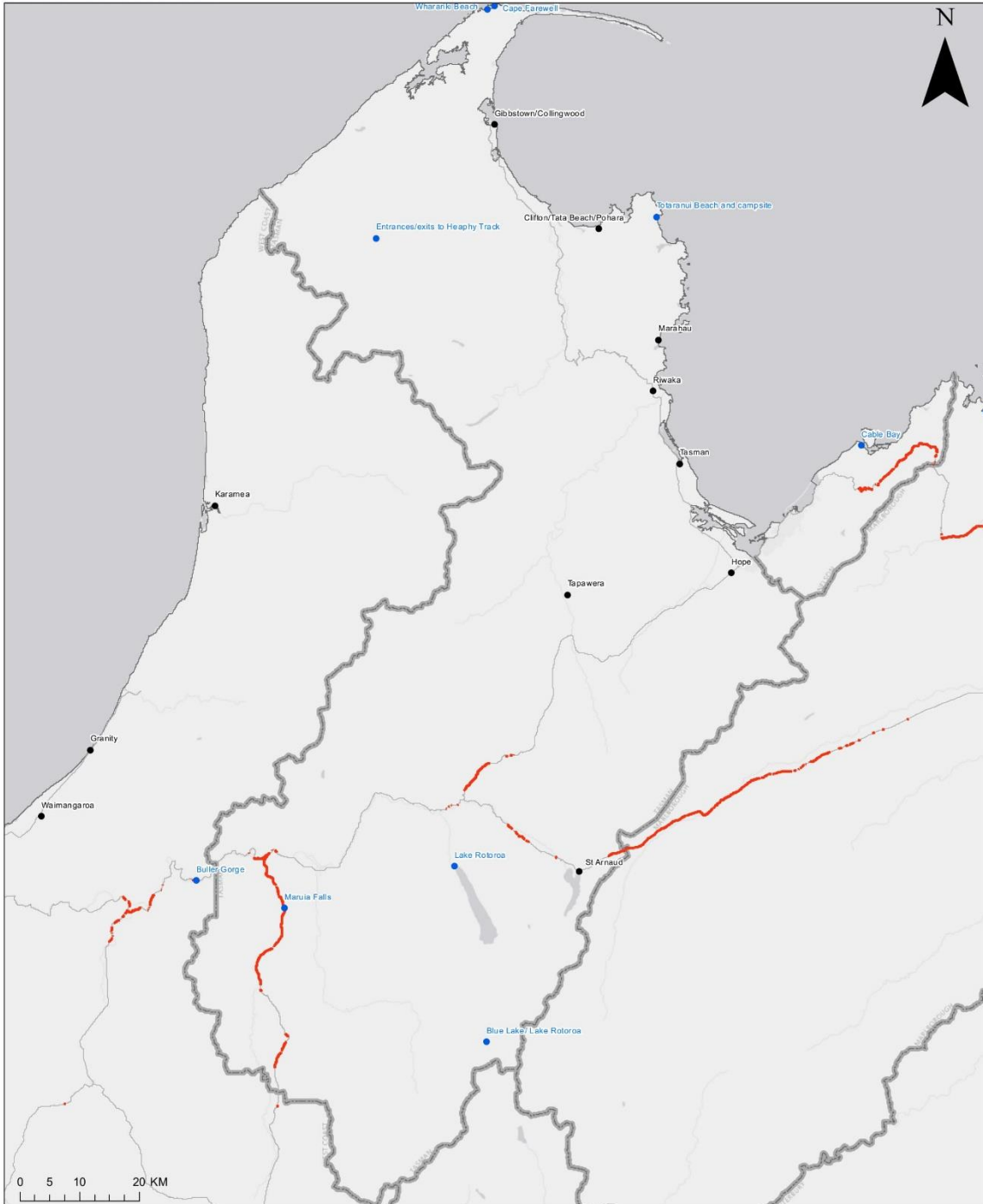
The Tasman region will receive new mobile coverage for 7 tourism areas.

- Blue Lake/ Lake Rotoroa
- Cape Farewell
- Entrances/exits to Heaphy Track
- Lake Rotoroa
- Maruia Falls
- Totaranui Beach and campsite
- Wharariki Beach

Note: the information above is indicative only and subject to change. Crown Fibre Holdings will be working with partners to carry out more detailed planning over the coming months.



TASMAN REGION NEW COVERAGE



*The blue tourism areas and red State Highway coverage on this map are indicative, representing coverage expected to be achieved with the first \$150 million provided to the Rural Connectivity Group (RCG). The RCG contract will be expanded with another \$100 million to cover remaining tourism areas (not shown on this map) and remaining State Highway blackspots (not shown on this map).

**RBI2 end users are households and businesses. This projection is indicative and can fluctuate as the final locations for RBI2 sites are subject to land acquisition and consents.

8 new areas getting UFB
52 km State Highway Coverage
7 tourism locations
1,798 RBI2 End Users

- Tourism New Coverage*
- State Highway New Coverage*
- UFB2+

West Coast

Ultra-Fast Broadband expansion

Under the latest extension of the Government's Ultra-Fast Broadband programme, world-class broadband will be rolled out to an additional 16 towns and 1 fringe area in the West Coast.

This will provide approximately 2,500 more West Coast households and businesses with access to faster, more reliable internet.

New towns & fringe areas:

- Ahaura
- Blackball
- Carters Beach
- Dobson
- Fox Glacier
- Franz Josef/Waiau
- Granity
- Hari Hari
- Kaniere
- Karamea
- Kumara
- Moana
- Punakaiki
- Ross
- Taylorville
- Waimangaroa
- Whataroa
- Chorus UFB2 fringe

The entire UFB build in the West Coast will be complete by the end of 2022, providing more than 12,000 West Coast households and businesses with faster internet.

The Government's total investment in West Coast and Tasman UFB connectivity is \$31.9 million.

Rural Broadband Initiative phase two

Under the second round of the Government's Rural Broadband Initiative, a further 2,089 households and businesses in the West Coast will receive new rural broadband coverage.

Exact coverage areas are to be determined. Crown Fibre Holdings will be working with partners to carry out more detailed planning over the coming months.

Mobile Black Spot Fund – State Highways

Four state highways in the West Coast will receive new mobile coverage. Approximately 154kms will be covered across State Highway 6, 7, 65 and 69.

Mobile Black Spot Fund – Tourism Areas

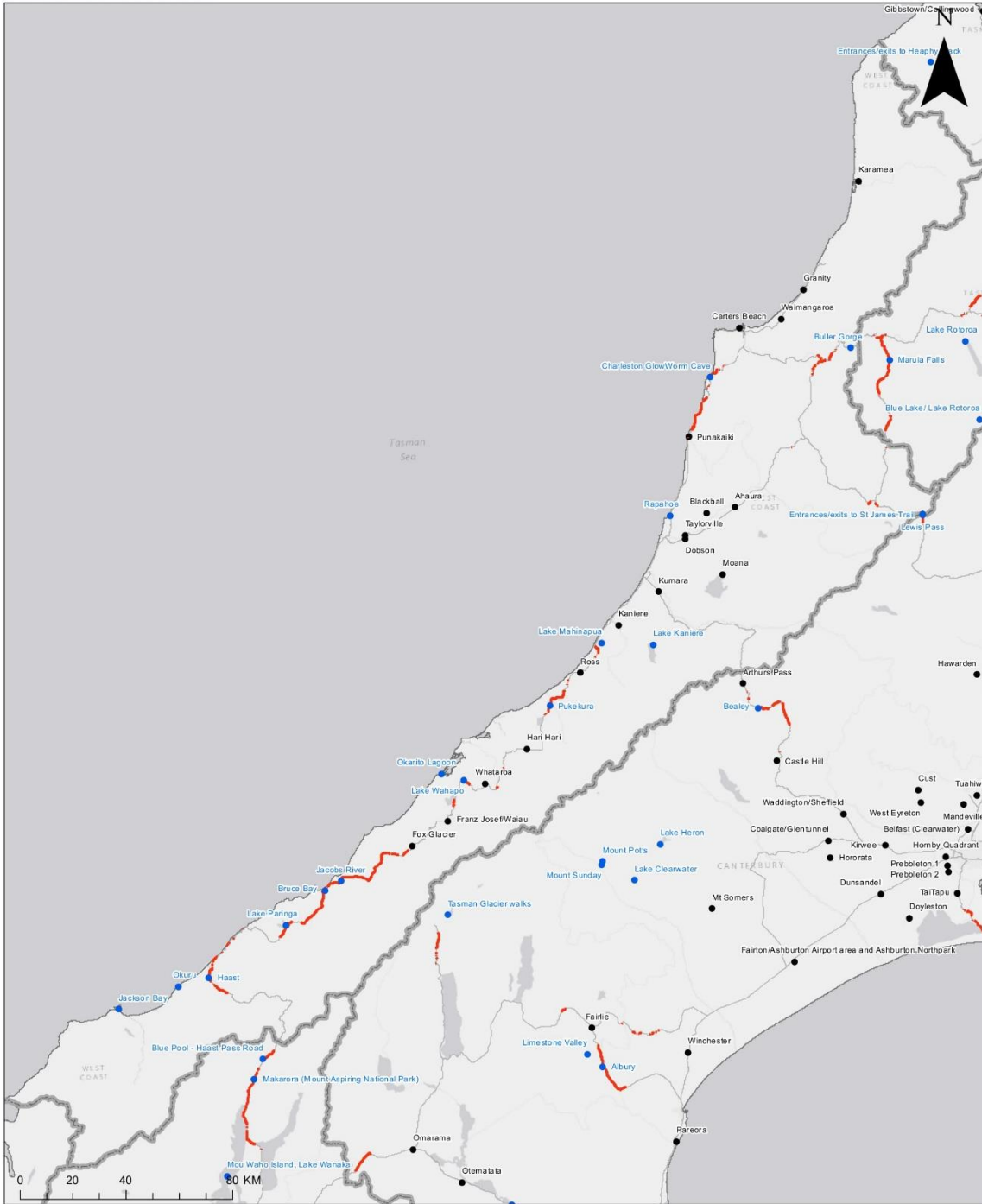
The West Coast region will receive new mobile coverage for 14 tourism areas.

- Bruce Bay
- Buller Gorge
- Charleston GlowWorm Cave
- Haast
- Jackson Bay
- Jacobs River
- Lake Kaniere
- Lake Mahinapua
- Lake Paringa
- Lake Wahapo
- Okarito Lagoon
- Okuru
- Pukekura
- Rapahoe

Note: the information above is indicative only and subject to change. Crown Fibre Holdings will be working with partners to carry out more detailed planning over the coming months.



WEST COAST REGION NEW COVERAGE



17 new areas getting UFB
154 km State Highway Coverage
14 tourism locations
2,089 RB12 End Users

- Tourism New Coverage*
- State Highway New Coverage*
- UFB2+

*The blue tourism areas and red State Highway coverage on this map are indicative, representing coverage expected to be achieved with the first \$150 million provided to the Rural Connectivity Group (RCG). The RCG contract will be expanded with another \$100 million to cover remaining tourism areas (not shown on this map) and remaining State Highway blackspots (not shown on this map).

**RB12 end users are households and businesses. This projection is indicative and can fluctuate as the final locations for RB12 sites are subject to land acquisition and consents.

Canterbury

Ultra-Fast Broadband expansion

Under the latest extension of the Government's Ultra-Fast Broadband programme, world-class broadband will be rolled out to an additional 34 towns and 5 fringe areas in Canterbury.

This will provide approximately 7,500 more Canterbury households and businesses with access to faster, more reliable internet.

New towns & fringe areas:

- Arthurs Pass
- Belfast (Clearwater)
- Castle Hill
- Coalgate/Glentunnel
- Cust
- Doyleston
- Dunsandel
- Duntroon
- Duvauchelle
- Fairlie
- Fairton/Ashburton Airport area and Ashburton Northpark
- Glenavy
- Hanmer Springs
- Hawarden
- Hornby Quadrant
- Hororata
- Kirwee
- Kurow
- Leithfield
- Leithfield Beach
- Little River
- Mandeville
- Mt Somers
- Omarama
- Otematata
- Pareora
- Prebbleton 1
- Prebbleton 2
- Rotherham
- South Kaikoura
- Tai Tapu
- Takamatua
- Tuahiwi
- Waddington/Sheffield
- Waiau
- Waikari
- Waipara
- West Eyreton
- Winchester

- Chorus UFB2 fringe

The entire UFB build in Canterbury will be complete by the end of 2022, providing more than 229,000 Canterbury households and businesses with faster internet.

The Government's total investment in Canterbury UFB connectivity is \$233.3 million.

Rural Broadband Initiative phase two

Under the second round of the Government's Rural Broadband Initiative, a further 9,727 households and businesses in Canterbury (and the Chatham Islands) will receive new rural broadband coverage.

Exact coverage areas are to be determined. Crown Fibre Holdings will be working with partners to carry out more detailed planning over the coming months.

Mobile Black Spot Fund – State Highways

Seven state highways in Canterbury will receive new mobile coverage. Approximately 100kms will be covered across State Highway 1, 7, 8, 73, 75, 79 and 80.

Mobile Black Spot Fund – Tourism Areas

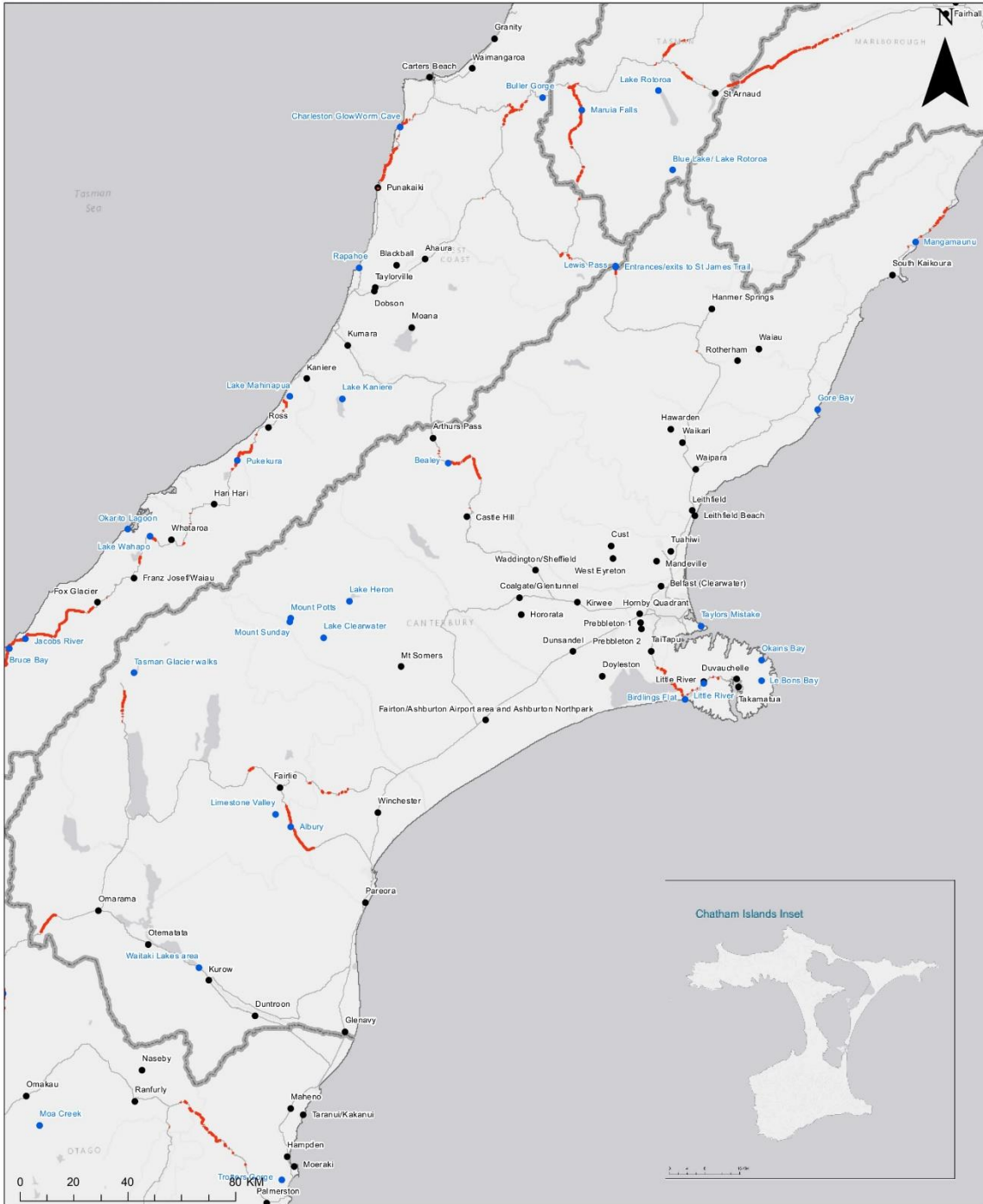
The Canterbury region will receive new mobile coverage for 17 tourism areas.

- Albury
- Bealey
- Birdlings Flat
- Entrances/exits to St James Trail
- Gore Bay
- Lake Clearwater
- Lake Heron
- Le Bons Bay
- Lewis Pass
- Limestone Valley
- Little River
- Mangamaunu
- Mount Potts
- Mount Sunday
- Okains Bay
- Tasman Glacier walks
- Taylors Mistake

Note: the information above is indicative only and subject to change. Crown Fibre Holdings will be working with partners to carry out more detailed planning over the coming months.



CANTERBURY REGION (INCL CHATHAM ISLANDS) NEW COVERAGE



39 new areas getting UFB
100 km State Highway Coverage
17 tourism locations
9,727 RB12 End Users

- Tourism New Coverage*
- State Highway New Coverage*
- UFB2+

*The blue tourism areas and red State Highway coverage on this map are indicative, representing coverage expected to be achieved with the first \$150 million provided to the Rural Connectivity Group (RCG). The RCG contract will be expanded with another \$100 million to cover remaining tourism areas (not shown on this map) and remaining State Highway blackspots (not shown on this map).

**RB12 end users are households and businesses. This projection is indicative and can fluctuate as the final locations for RB12 sites are subject to land acquisition and consents.

Otago

Ultra-Fast Broadband expansion

Under the latest extension of the Government's Ultra-Fast Broadband programme, world-class broadband will be rolled out to an additional 22 towns in Otago.

This will provide approximately 7,000 more Otago households and businesses with access to faster, more reliable internet.

New towns & fringe areas:

- Allanton
- Bannockburn
- Clinton
- Cromwell/Pisa Moorings
- Hampden
- Kaitangata
- Karitane
- Kingston
- Lawrence
- Luggate
- Maheno
- Michies Crossing/Waitati
- Moeraki
- Naseby
- Omakau
- Owaka
- Palmerston
- Ranfurly
- Stirling
- Tapanui
- Taranui/Kakanui
- Warrington
- Chorus UFB2 fringe

The entire UFB build in Otago will be complete by the end of 2022, providing more than 85,000 Otago households and businesses with faster internet.

The Government's total investment in Otago and Southland UFB connectivity is \$152.4 million.

Rural Broadband Initiative phase two

Under the second round of the Government's Rural Broadband Initiative, a further 4,418 households and businesses in Otago will receive new rural broadband coverage.

Exact coverage areas are to be determined. Crown Fibre Holdings will be working with partners to carry out more detailed planning over the coming months.

Mobile Black Spot Fund – State Highways

Five state highways in Otago will receive new mobile coverage. Approximately 120kms will be covered across State Highway 6, 8, 85, 87 and 90.

Mobile Black Spot Fund – Tourism Areas

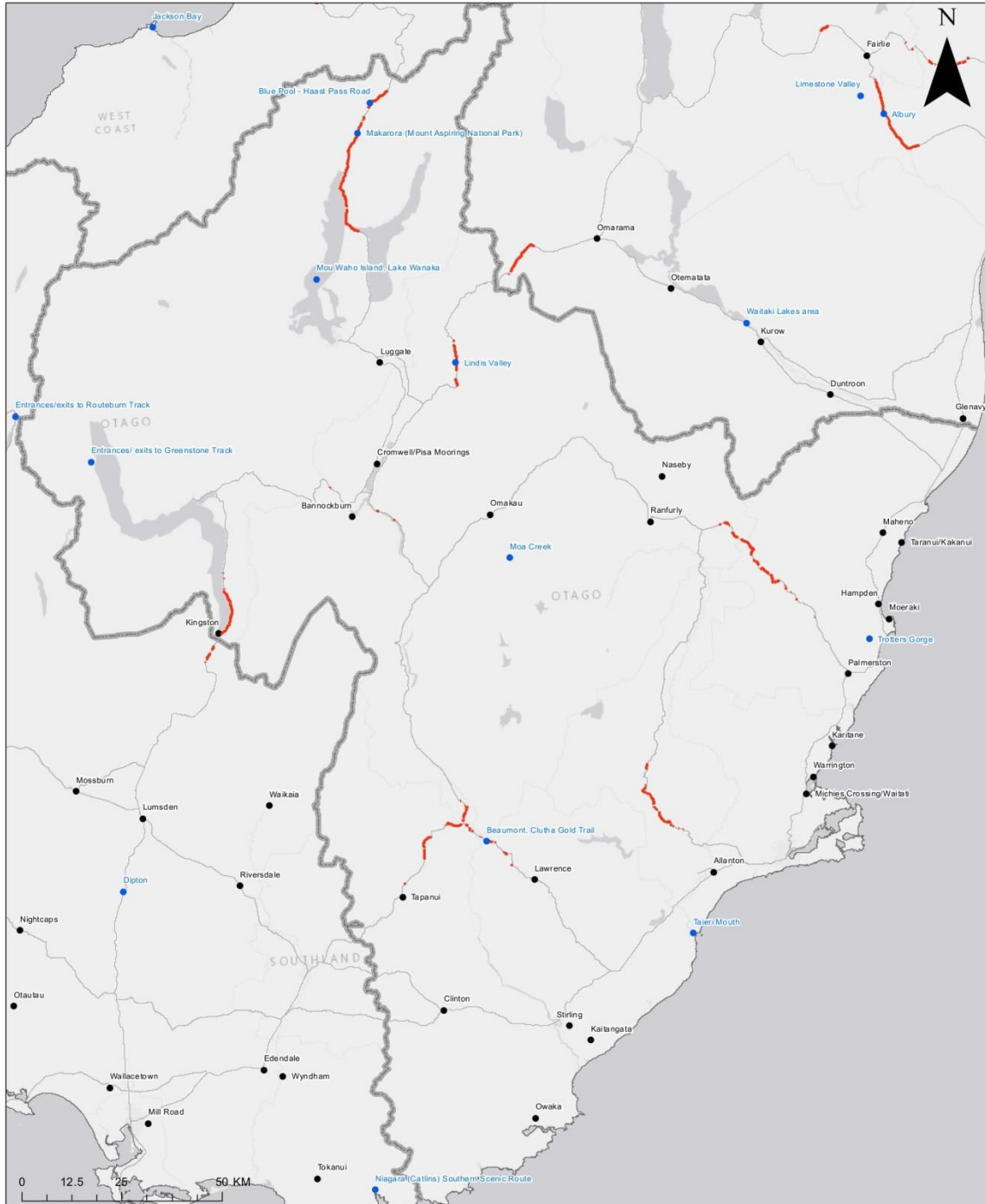
The Otago region will receive new mobile coverage for 10 tourism areas.

- Beaumont. Clutha Gold Trail
- Blue Pool - Haast Pass Road
- Entrances/exits to Greenstone Track
- Lindis Valley
- Makarora (Mount Aspiring National Park)
- Moa Creek
- Mou Waho Island, Lake Wanaka
- Taieri Mouth
- Trotters Gorge
- Waitaki Lakes area

Note: the information above is indicative only and subject to change. Crown Fibre Holdings will be working with partners to carry out more detailed planning over the coming months.



OTAGO REGION NEW COVERAGE



22 new areas getting UFB
120 km State Highway Coverage
10 tourism locations
4,418 RBIZ End Users

- Tourism New Coverage*
- State Highway New Coverage*
- UFB2+

*The blue tourism areas and red State Highway coverage on this map are indicative, representing coverage expected to be achieved with the first \$150 million provided to the Rural Connectivity Group (RCG). The RCG contract will be expanded with another \$100 million to cover remaining tourism areas (not shown on this map) and remaining State Highway blackspots (not shown on this map).

**RBIZ end users are households and businesses. This projection is indicative and can fluctuate as the final locations for RBIZ sites are subject to land acquisition and consents.

Southland

Ultra-Fast Broadband expansion

Under the latest extension of the Government's Ultra-Fast Broadband programme, world-class broadband will be rolled out to an additional 13 towns and 1 fringe area in Southland.

This will provide approximately 4,500 more Southland households and businesses with access to faster, more reliable internet.

New towns & fringe areas:

- Blackmount/Manapouri
- Edendale
- Lumsden
- Mill Road
- Mossburn
- Nightcaps
- Ohai
- Otautau
- Riversdale
- Tokanui
- Tuatapere
- Waikaia
- Wallacetown
- Wyndham
- Chorus UFB2 fringe

The entire UFB build in Southland will be complete by the end of 2022, providing more than 42,000 Southland households and businesses with faster internet.

The Government's total investment in Southland and Otago UFB connectivity is \$152.4 million.

Rural Broadband Initiative phase two

Under the second round of the Government's Rural Broadband Initiative, a further 5,287 households and businesses in Southland will receive new rural broadband coverage.

Exact coverage areas are to be determined. Crown Fibre Holdings will be working with partners to carry out more detailed planning over the coming months.

Mobile Black Spot Fund – State Highways

Two state highways in Southland will receive new mobile coverage. Approximately 37kms will be covered across State Highway 6 and 94.

Mobile Black Spot Fund – Tourism Areas

The Southland region will receive new mobile coverage for 11 tourism areas.

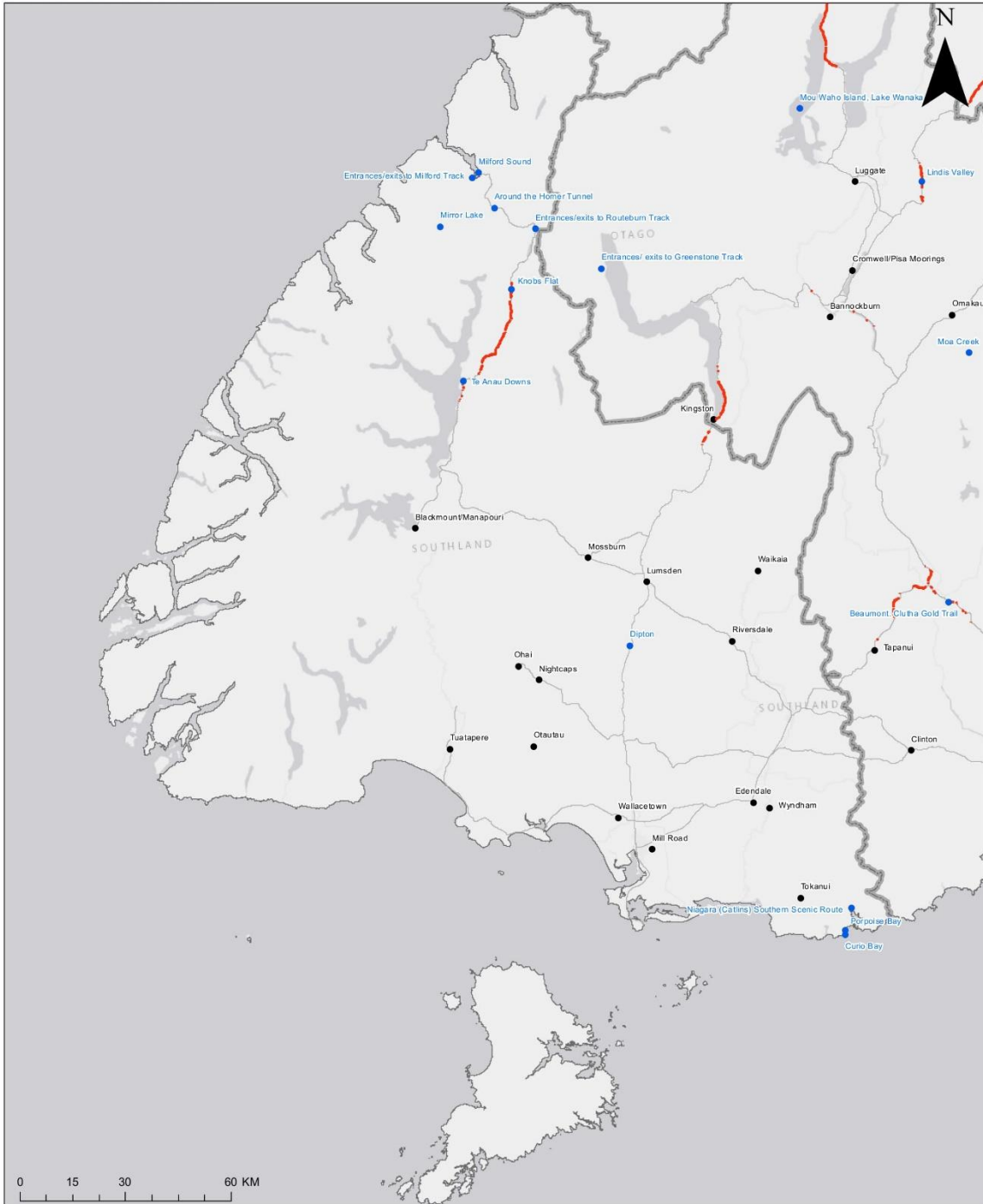
- Around the Homer Tunnel
- Curio Bay
- Dipton

- Entrances/exits to Milford Track
- Entrances/exits to Routeburn Track
- Knobs Flat
- Milford Sound
- Mirror Lake
- Niagara (Catlins) Southern Scenic Route
- Porpoise Bay
- Te Anau Downs

Note: the information above is indicative only and subject to change. Crown Fibre Holdings will be working with partners to carry out more detailed planning over the coming months.



SOUTHLAND REGION NEW COVERAGE



*The blue tourism areas and red State Highway coverage on this map are indicative, representing coverage expected to be achieved with the first \$150 million provided to the Rural Connectivity Group (RCG). The RCG contract will be expanded with another \$100 million to cover remaining tourism areas (not shown on this map) and remaining State Highway blackspots (not shown on this map).

**RBI2 end users are households and businesses. This projection is indicative and can fluctuate as the final locations for RBI2 sites are subject to land acquisition and consents.

14 new areas getting UFB
37 km State Highway Coverage
11 tourism locations
5,287 RBI2 End Users

- Tourism New Coverage*
- State Highway New Coverage*
- UFB2+