

**ASX Code: RDM**

Red Metal Limited is a minerals exploration company focused on the exploration, evaluation and development of Australian copper-gold and basemetal deposits.

**Issued Capital:**

196,818,409  
Ordinary shares

5,550,000  
Unlisted options

**Directors:**

Rob Rutherford  
Managing Director

Russell Barwick  
Chairman

Joshua Pitt  
Non-executive Director

**RED METAL LIMITED**

Level 15  
323 Castlereagh Street  
Sydney NSW 2000

Ph: +61 2 9281 1805  
Fax: +61 2 9281 5747

info@redmetal.com.au  
[www.redmetal.com.au](http://www.redmetal.com.au)

Queensland  
Explorer of the Year 2013

**ASX ANNOUNCEMENT**  
**23 October 2017**

**LAWN HILL ZINC PROJECT – DRILLING TO START**

Landowner access agreements and heritage surveys are now completed allowing drill tests to begin on three separate McArthur River style zinc plays situated only 40 kilometres northeast of the giant Century zinc mine (Figure 1).

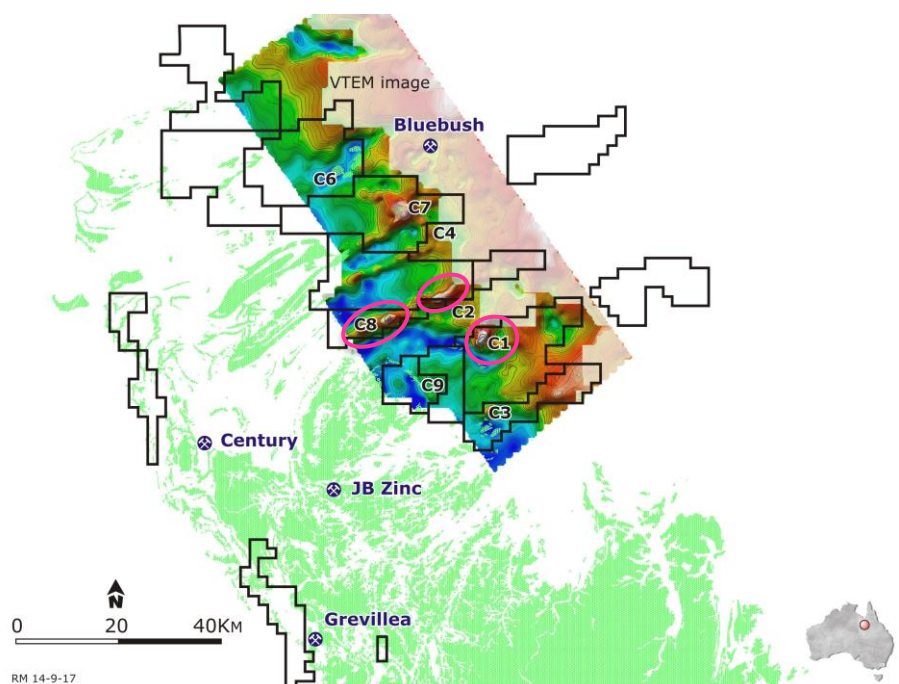
Recent target generation efforts, enhanced by a new airborne electromagnetic survey (VTEM), have defined several previously untested zinc plays for proof of concept drill tests (Figure 1). Standouts from this work include three strong, stratiform conductors in areas where McArthur River equivalent zinc stratigraphy is interpreted below just 50 to 200 metres of younger sedimentary cover (C1, C2 and C8 in Figure 1).

**Conductor 1 (C1)** is flat lying, measuring 5 kilometres by 6 kilometres and located under about 120 metres of cover (Figure 1).

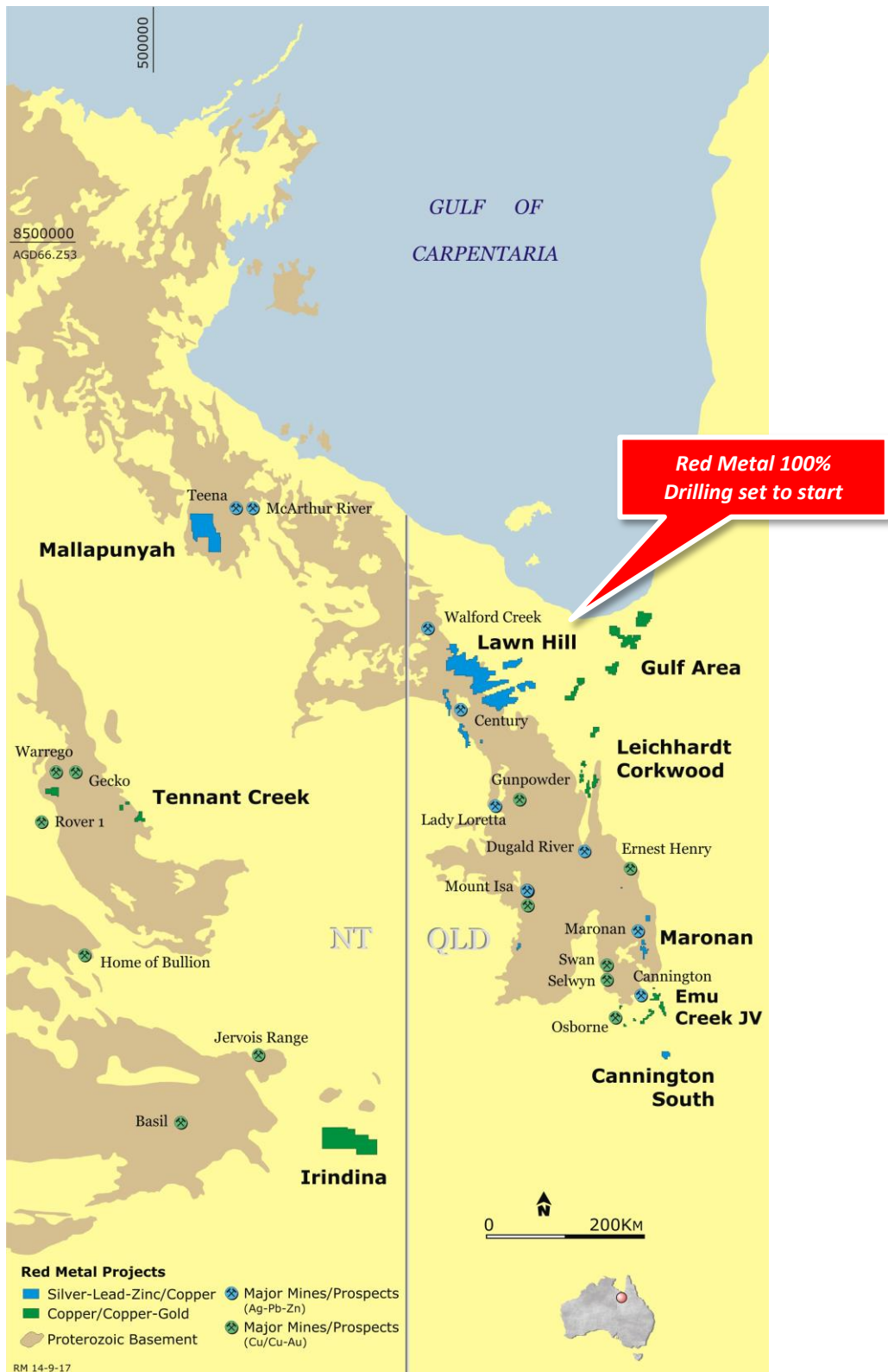
**Conductor 2 (C2)** is 5 kilometres long, dips about 30 degrees to the northwest and is located under 100 to 200 metres of cover (Figure 1).

**Conductor 8 (C8)** is the westward extension of Conductor 2 and continues for about 12 kilometres under less than 50 metres of cover.

Each of the three targets will be tested for their zinc potential with a separate percussion/diamond core hole drilled to a depth of about 600 metres. A suitable rig is being mobilized to site for start-up early next week. An update will be reported upon completion of the program.



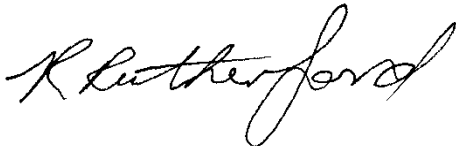
[Figure 1] Lawn Hill Project: Tenement locations on outcropping Proterozoic geology (light green shading) overlain by VTEM conductivity image showing main conductivity targets (C1 to C9) with zinc mines and prospects. The conductivity image is frosted where the Mesozoic sedimentary cover is too conductive to induce a basement response.



[Figure 2] Northwest Queensland and Northern Territory: Major deposits and Red Metal tenement locations.

For further information concerning Red Metal's operations and plans for the future please refer to the recently updated web site or contact Rob Rutherford, Managing Director at:

Phone +61 (0)2 9281-1805  
Fax +61 (0)2 9281-5747  
www.redmetal.com.au



Rob Rutherford  
Managing Director



Russell Barwick  
Chairman

---

*The information in this report that relates to Exploration Results is based on and fairly represents information and supporting documentation compiled by Mr Robert Rutherford, who is a member of the Australian Institute of Geoscientists (AIG). Mr Rutherford is the Managing Director of the Company. Mr Rutherford has sufficient experience which is relevant to the style of mineralisation and type of deposit under consideration and to the activity which he is undertaking to qualify as a Competent Person as defined in the 2012 Edition of the "Australasian Code for Reporting of Exploration Results, Mineral Resources and Ore Reserves" (the JORC Code). Mr Rutherford consents to the inclusion in the report of the matters based on his information in the form and context in which it appears.*