

SILVER CITY MINERALS LIMITED

ABN 68 130 933 309

ASX Code: SCI

Silver City Minerals

AGM

November 2017

Important Disclaimer

This presentation is provided to you for the sole purpose of providing background technical, financial and other information to enable you to review the business activities of Silver City Minerals Limited ("Silver City", "SCI" or the "Company"). This presentation contains forward looking statements concerning Silver City Minerals Limited. Forward-looking statements are not statements of historical fact and actual events and results may differ materially from those described in the forward looking statements as a result of a variety of risks, uncertainties and other factors. Forward-looking statements are inherently subject to business, economic, competitive, political and social uncertainties and contingencies. Many factors could cause the Company's actual results to differ materially from those expressed or implied in any forward-looking information provided by the Company, or on behalf of, the Company. Such factors include, among other things, risks relating to additional funding requirements, metal prices, exploration, development and operating risks, competition, production risks, regulatory restrictions, including environmental regulation and liability and potential title disputes. Forward looking statements in this document are based on Silver City's beliefs, opinions and estimates of Silver City Minerals as of the dates the forward looking statements are made, and no obligation is assumed to update forward looking statements if these beliefs, opinions and estimates should change or to reflect other future development. Nothing in this material should be construed as the solicitation of an offer to buy or sell SCI securities.

Competent Person

Information in this document that relates to Exploration Results, Mineral Resources or Ore Reserves is based on information compiled by Christopher Torrey, who is the Managing Director and full-time employee and shareholder of Silver City Minerals Limited, and a Member of the Australian Institute of Geoscientists. Mr Torrey has sufficient experience which is relevant to the style of mineralisation and type of deposit under consideration and to the activity which he is undertaking to qualify as a Competent Person as defined in the 2012 Edition of the "Australasian Code for Reporting of Exploration Results, Mineral Resources and Ore Reserves". Mr Torrey consents to the inclusion in the report of the matters based on his information in the form and context in which it appears.

Attractive Investment proposition

- Large tenement position at Broken Hill (≈ 1000 km²)
- Key projects: Copper-Gold (Cobalt) and Zinc close to Broken Hill
- Broken Hill home to worlds largest Zinc-Lead-Silver Deposit. Has long mining heritage – birthplace of BHP Billiton and Rio Tinto
- Excellent infrastructure and JV partner with mill in Broken Hill
- Global zinc deficit and upswing in copper price
- Pipeline of news flow to come

Company snapshot

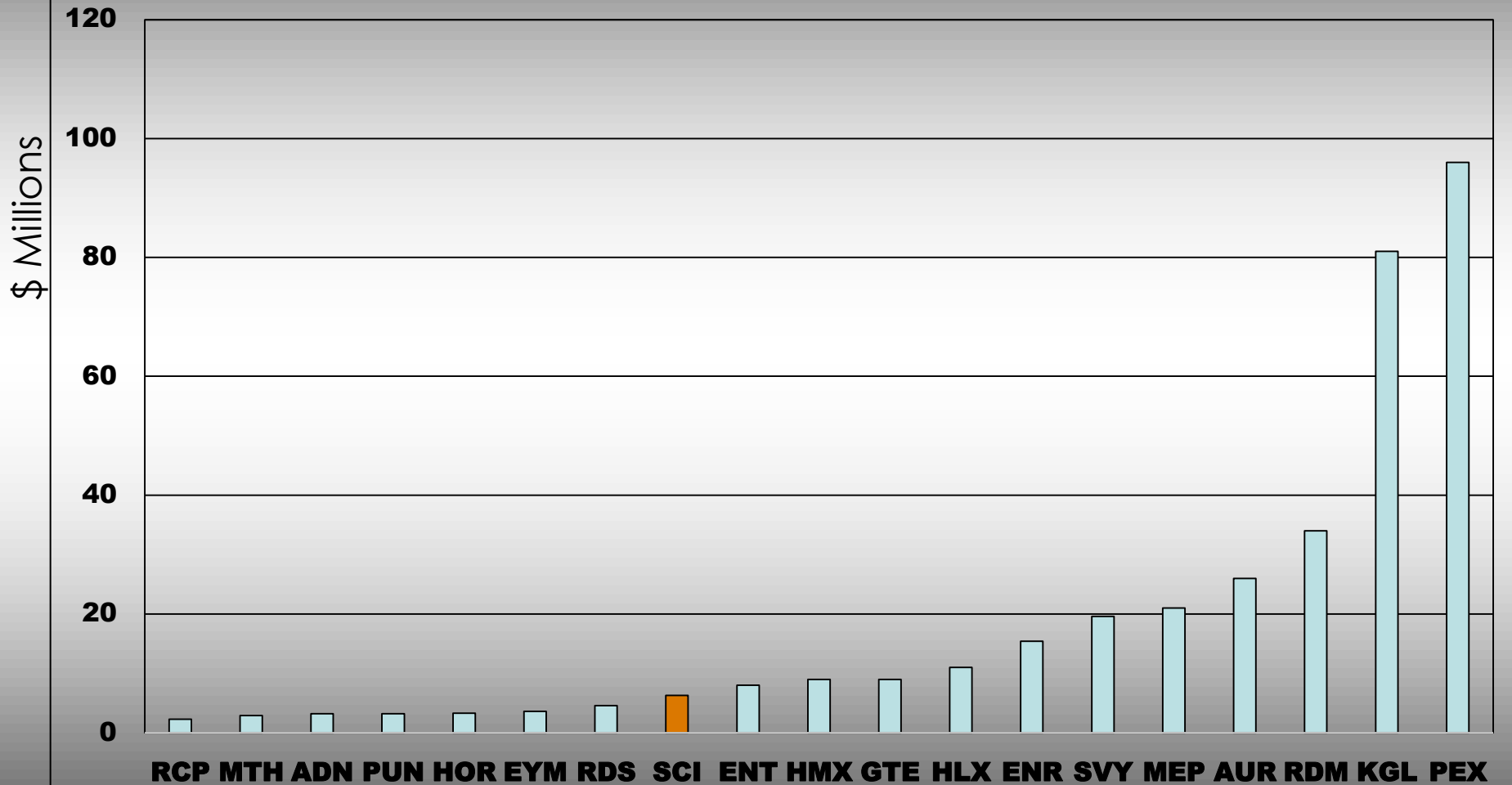


| Top shareholders | |
|-----------------------------|------|
| Jennings Family Investments | 3.6% |
| SCI Directors | 3.6% |
| Upsky Equity Pty | 3.6% |
| HSBC Custody Nominees | 2.6% |
| Calm Holdings Pty Ltd | 2.5% |
| Mr John Henry Toll | 2.3% |

Key metrics

| | | | |
|-------------------------|--------|-------------------------------------|--------|
| Market cap (at 4 cents) | \$7.9m | Cash on hand (at 30 September 2017) | \$1.2m |
| 52-week high | 6.3¢ | Top 20 shareholders | 37.2% |
| 52-week low | 1.6¢ | Shares on issue (No.) | 196.2m |
| 30-day average volume | 2.96m | Unlisted Options | 28.2m |

ASX COPPER EXPLORERS – AUSTRALIAN PROJECT MARKET CAP \$M



Board of Directors



Bob Besley
Chairman

Geologist with over 40 years experience in mining and exploration. Founder and original Managing Director of CBH Resources Limited. Bob took that company from inception as a junior explorer to a large zinc, lead and silver producer with a peak market cap of \$600m. Currently Chairman of Image Resources Limited.



Chris Torrey
Managing Director

Geologist with over 35 years experience in international mineral exploration. Senior management and consulting roles with Cyprus-Amax, ASX-listed Golden Cross Resources, US-listed Golden Minerals and Apex Silver. Past Chairman of Golden Cross Resources.



Greg Jones
Non-Executive Director

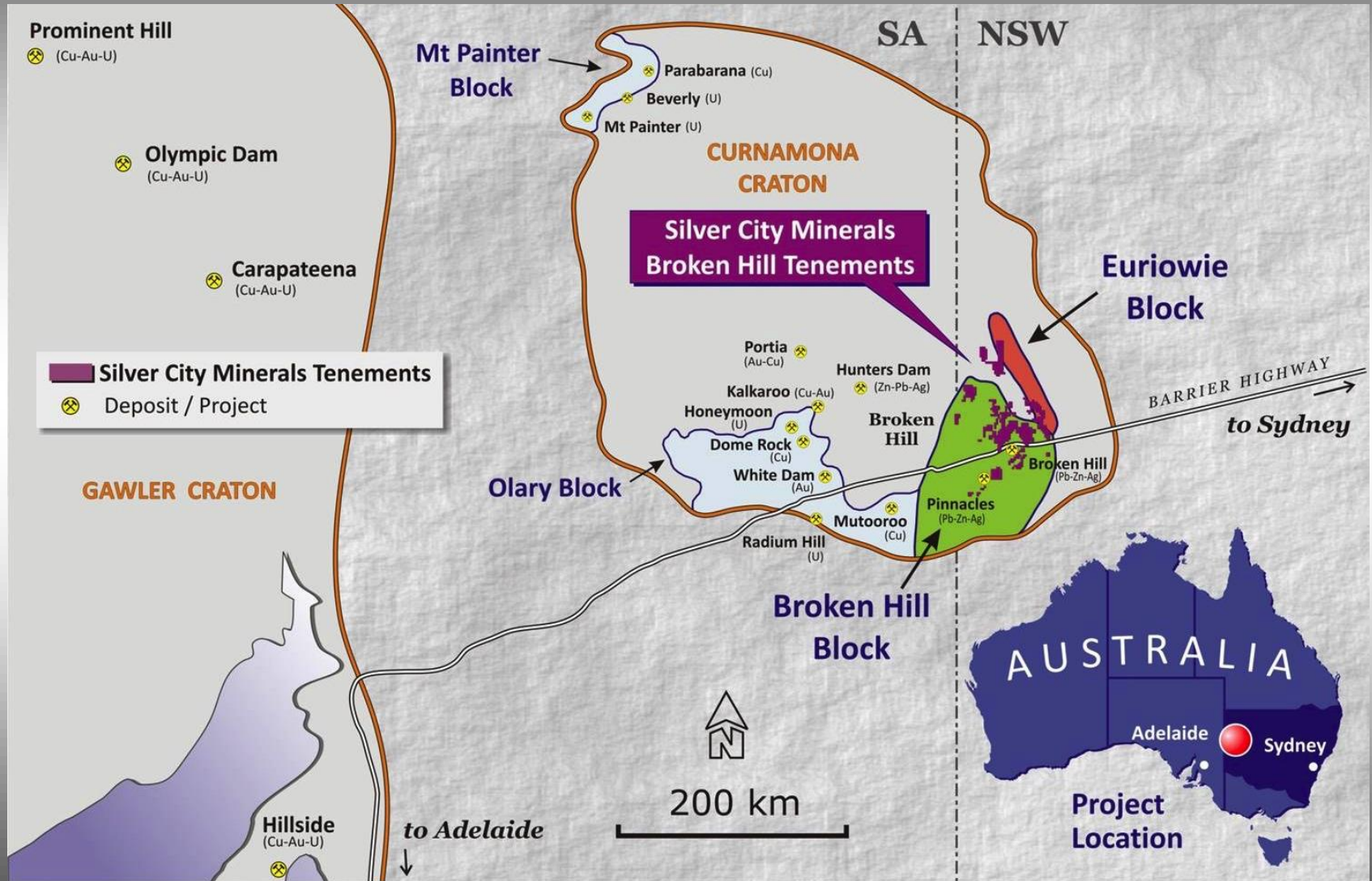
Greg is a geologist with 35 years exploration and mine operational experience. Senior management roles with Western Mining and Sino Gold. He currently holds directorships with ASX-listed companies; Moly Mines, Eastern Iron Limited and Thomson Resources. Greg is the Executive Technical Director of Variscan Mines Limited.



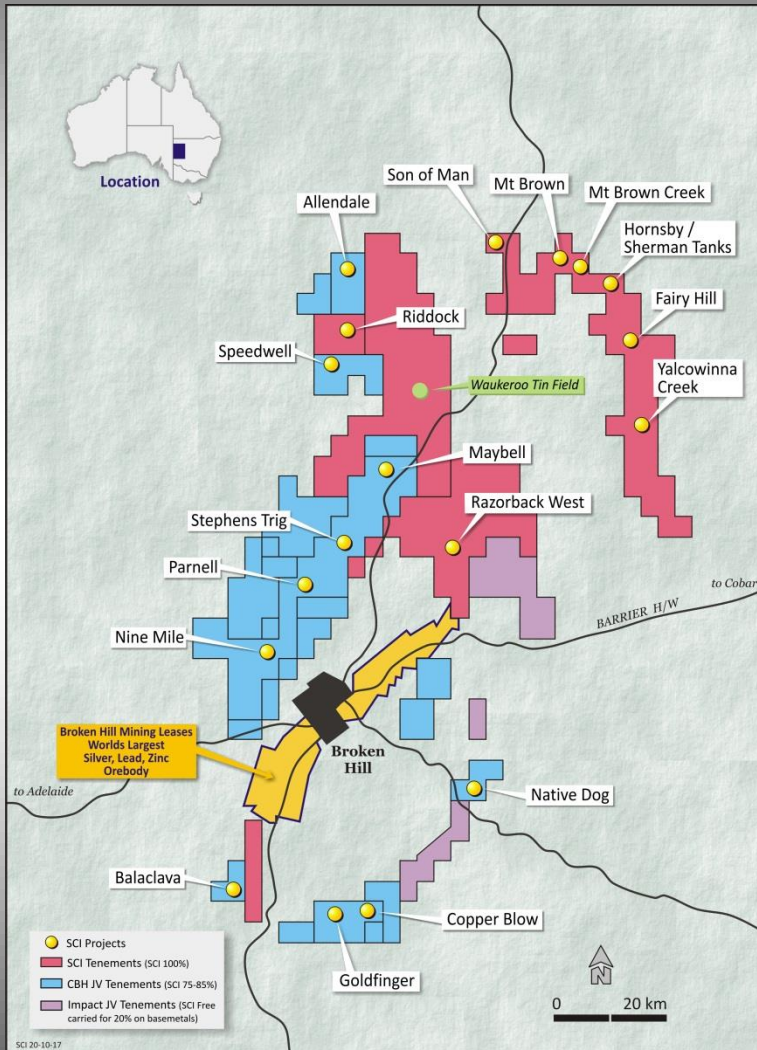
Josh Puckridge
Non-Executive Director

Josh is a Corporate Finance Executive formerly working as a specialist Equity Capital Markets Advisor for Fleming Australia, a Corporate Advisory and Funds Management firm. He has significant experience within funds management, capital raising, mergers, acquisitions and divestments of projects by companies listed on the Australian Securities Exchange.

Silver City minerals projects



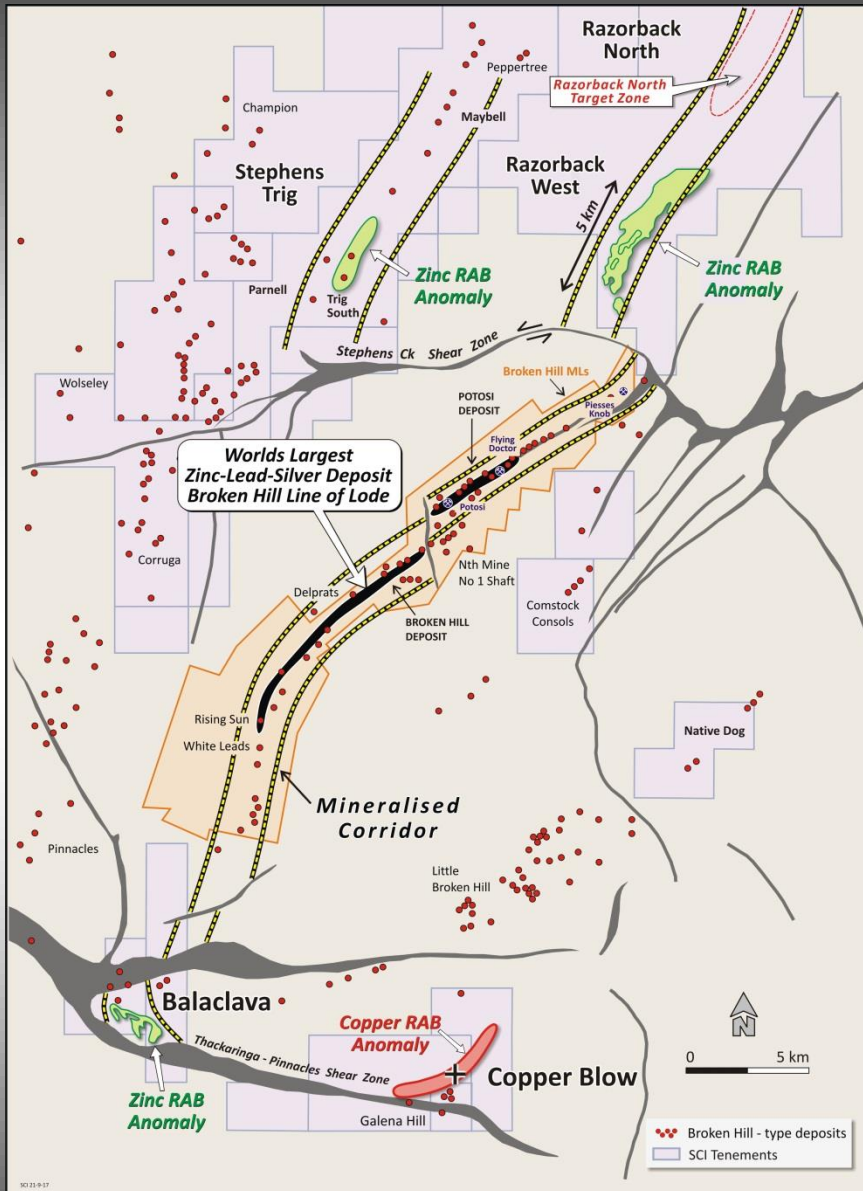
Broken Hill tenements



- Large tenement position
- Copper-Gold (Cobalt)
- Zinc-Lead-Silver
- Excellent infrastructure; mining centre
- Joint venture arrangements with CBH Resources and Impact Minerals

Project highlights

- Copper Blow and Razorback West
- Both significant geochemical anomalies under cover
- Both with mineralised drill intersections
- Both within 20km of a sulphide treatment plant
- Copper Blow in JV with CBH Resources (75/25, SCI/CBH)
- Razorback West 100% SCI



Copper Blow Key Features

High grades in SCI holes (approx 2700 metres)

- **4 metres at 6.1% copper, 4.23 g/t Au, 13 g/t Ag and 220 ppm cobalt from 188 metres (hole 17CB041) including:**
 - **1 metres at 11.3% copper, 10.7 g/t gold, 25 g/t silver and 405 ppm cobalt from 191 metres**
- **8.2 metres at 1.9% copper and 0.53 g/t gold 131.8 metres (hole 17CB043)**
- **2 metres at 2.4% copper, 0.8 g/t gold, 5 g/t silver from 162 metres (hole 17CB041)**
- **7 metres at 3.7% copper and 1.07 g/t gold from 126 metres (hole 15CB045) including:**
 - **3 metres at 7.4% copper and 2.38 g/t gold from 127 metres**

High grades in historic holes

- **11.8 metres at 6.7% copper and 1.92 g/t gold**
- **3 metres at 4.6 % copper**
- **2.7 metres at 5.7% copper and 4.2 g/t gold**

Results in ASX Releases 4th May 2017, 19 June 2017 and 26 and 27 Sept 2017, 5th October 2107, 26 October, 2017, 16 November 2017.

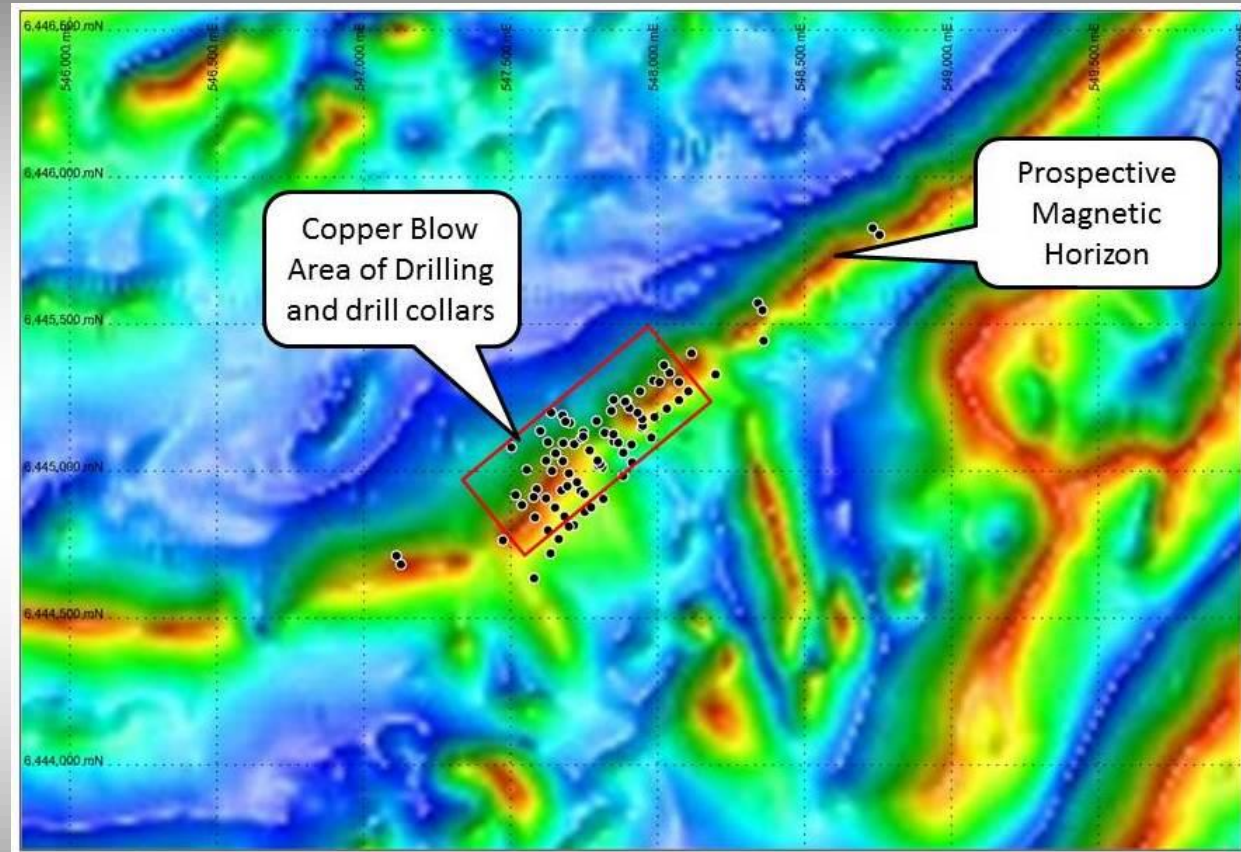
Mineralisation Styles



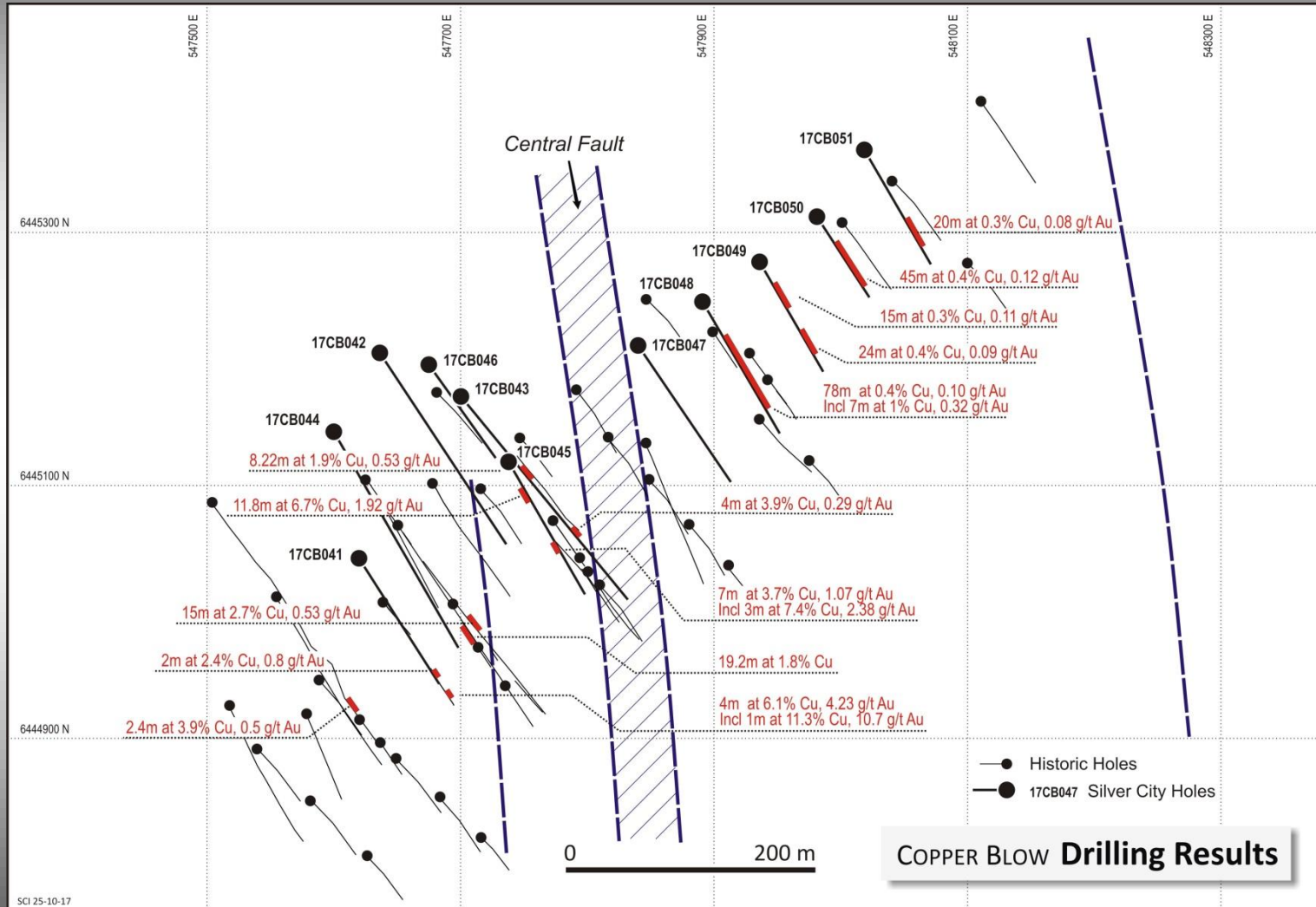
Drill core samples within intersections of +5% copper

Copper Blow exploration

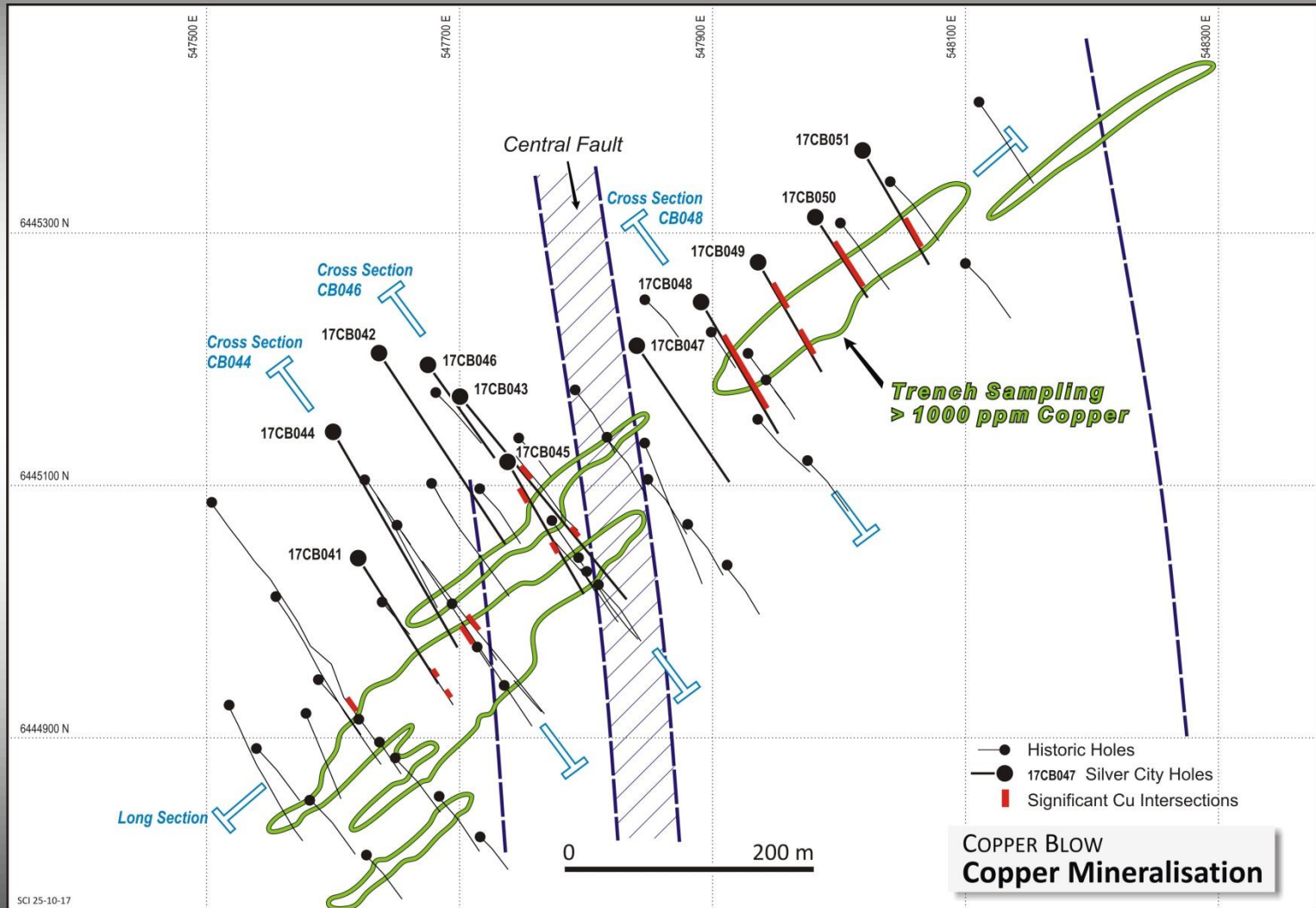
- Eleven SCI holes completed
- Copper-gold mineralisation, some cobalt
- 6 kilometres of strike potential



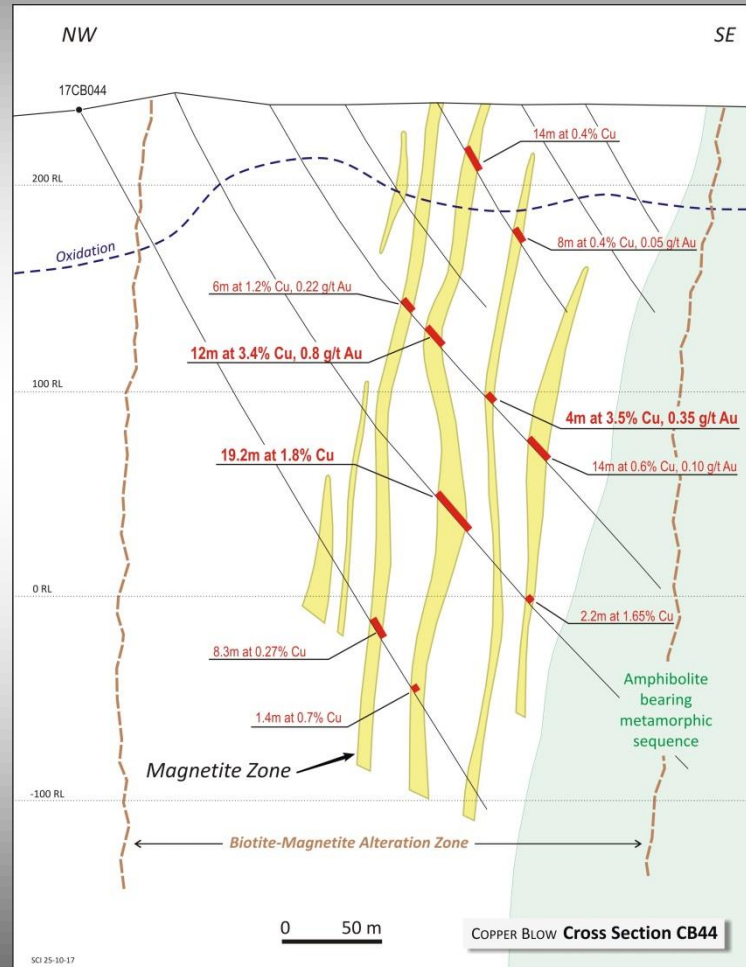
Copper Blow Drilling



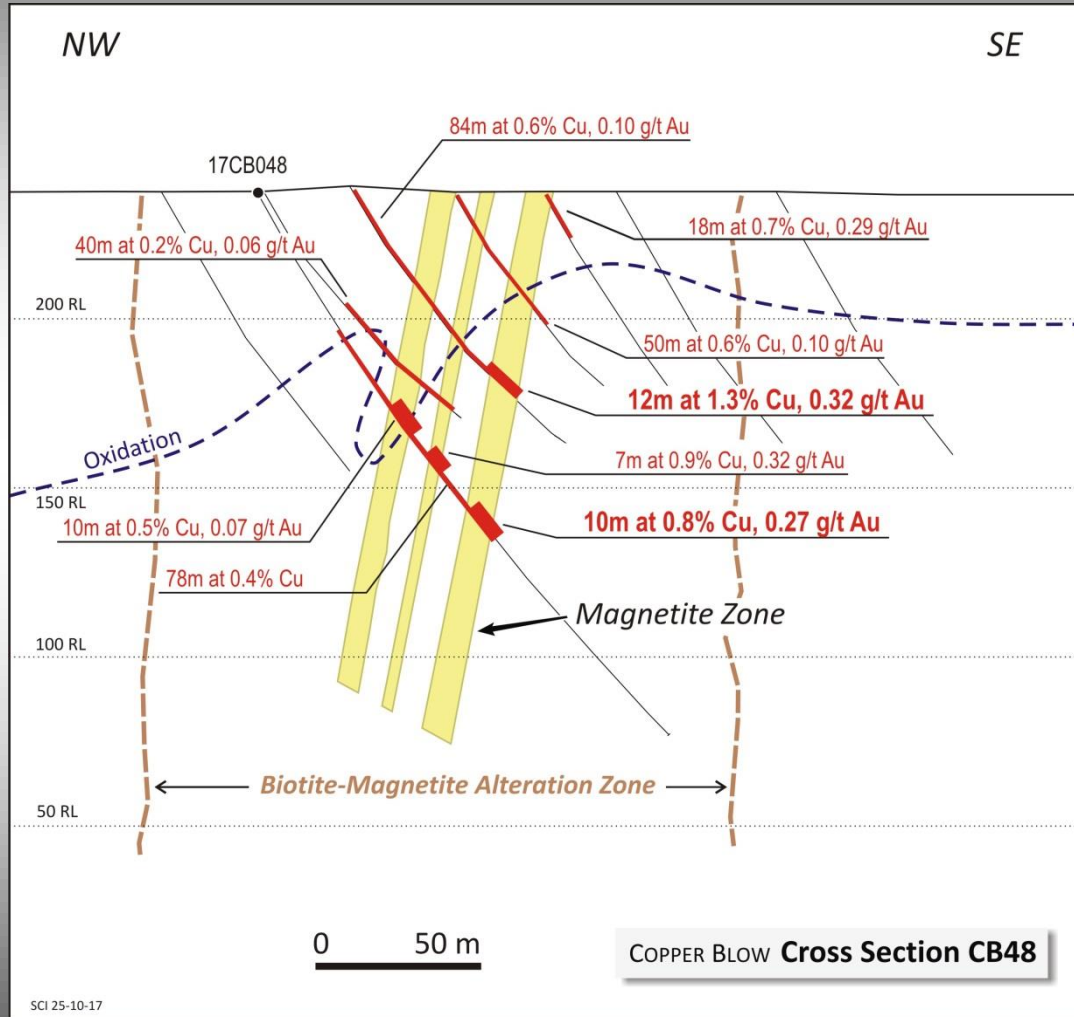
Copper Blow Drilling



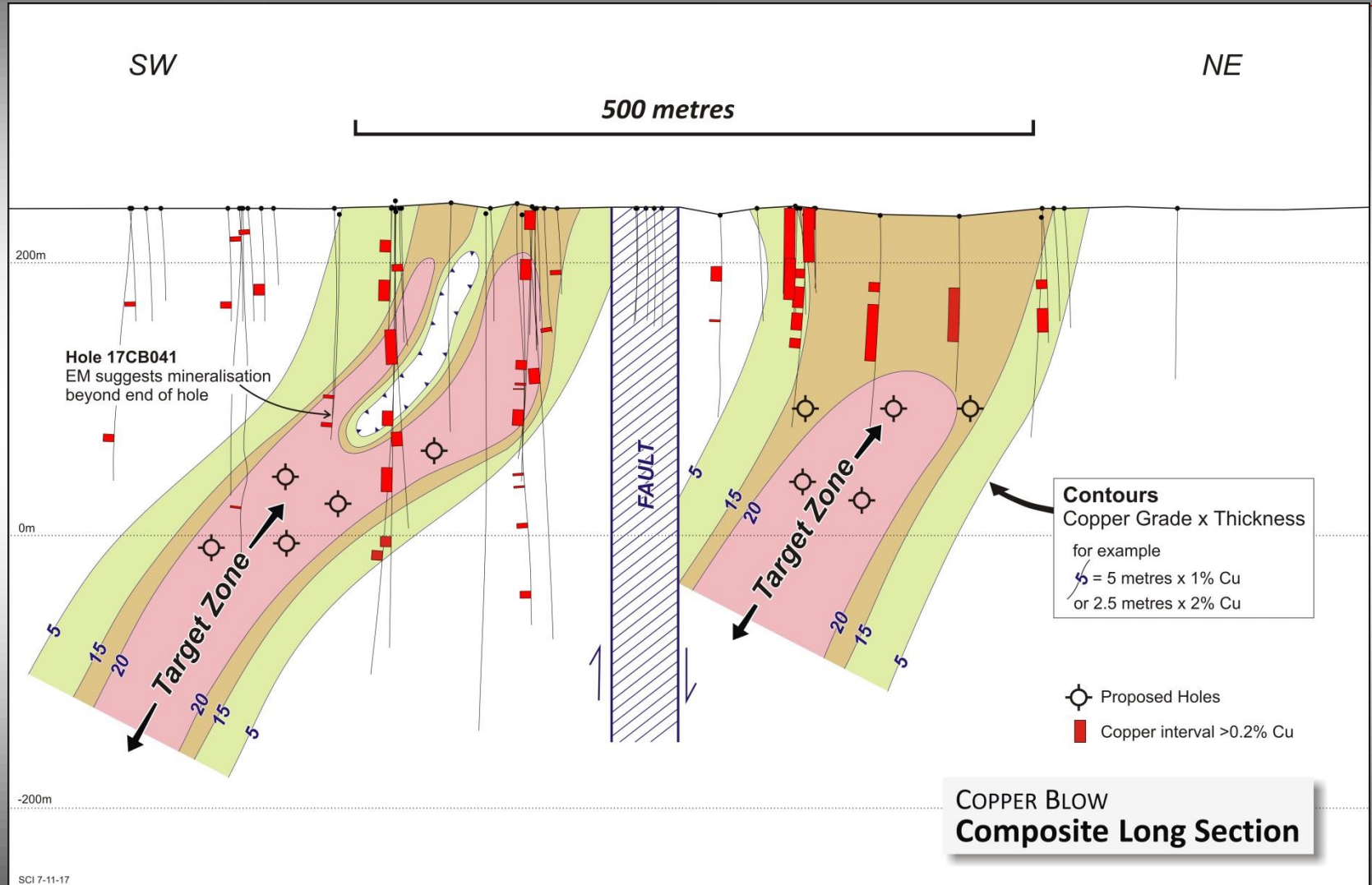
Copper Blow South Cross-Section



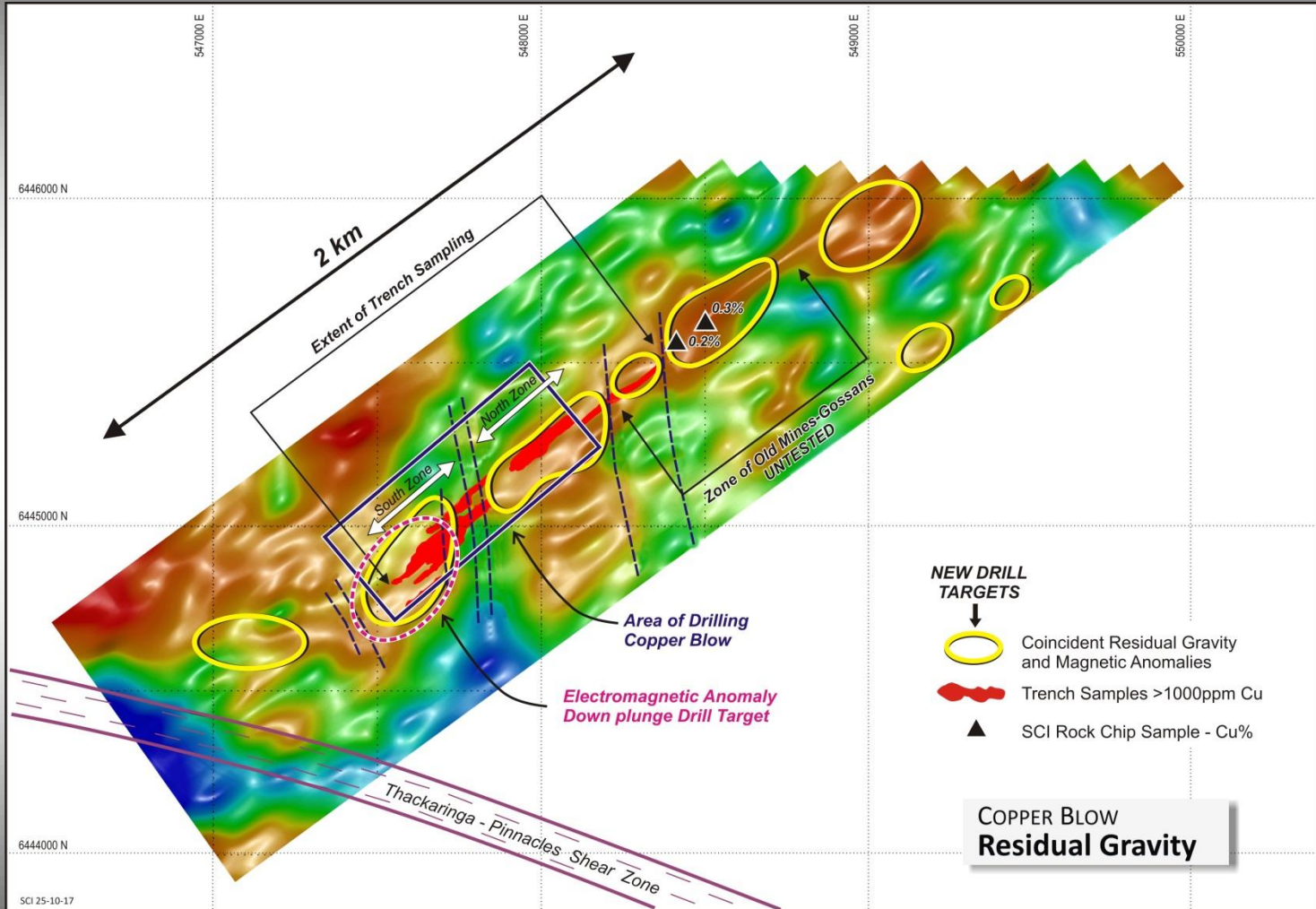
Copper Blow North Cross-Section



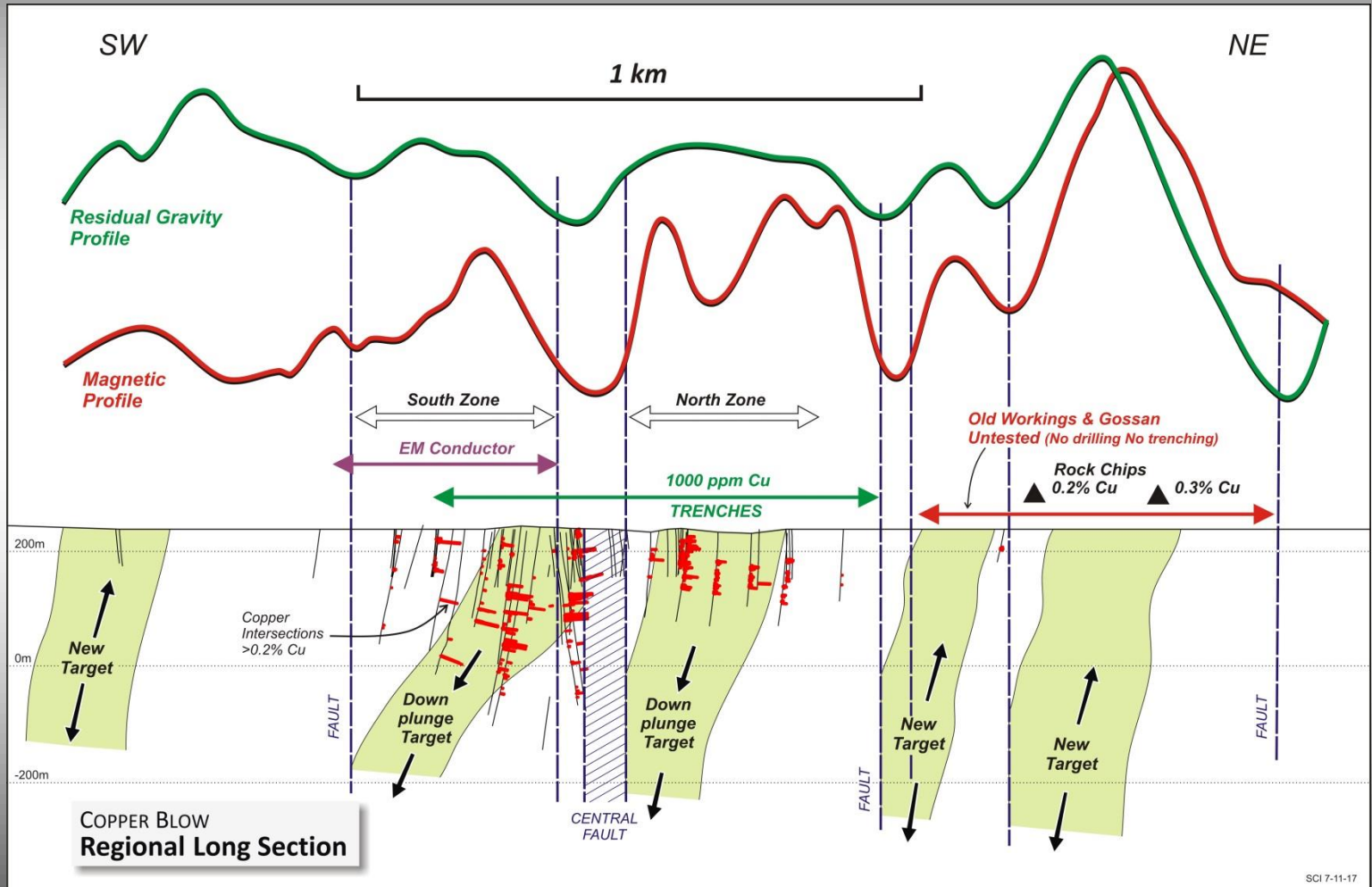
Copper Blow Longitudinal Section



New Targets

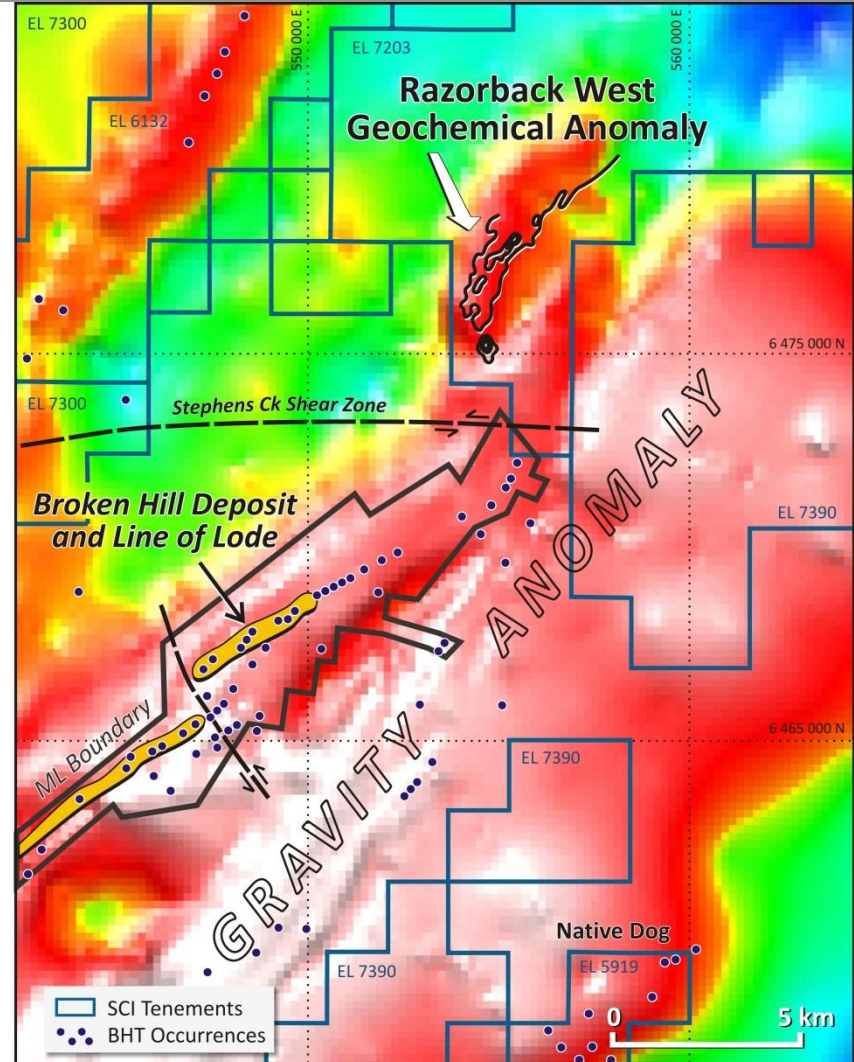
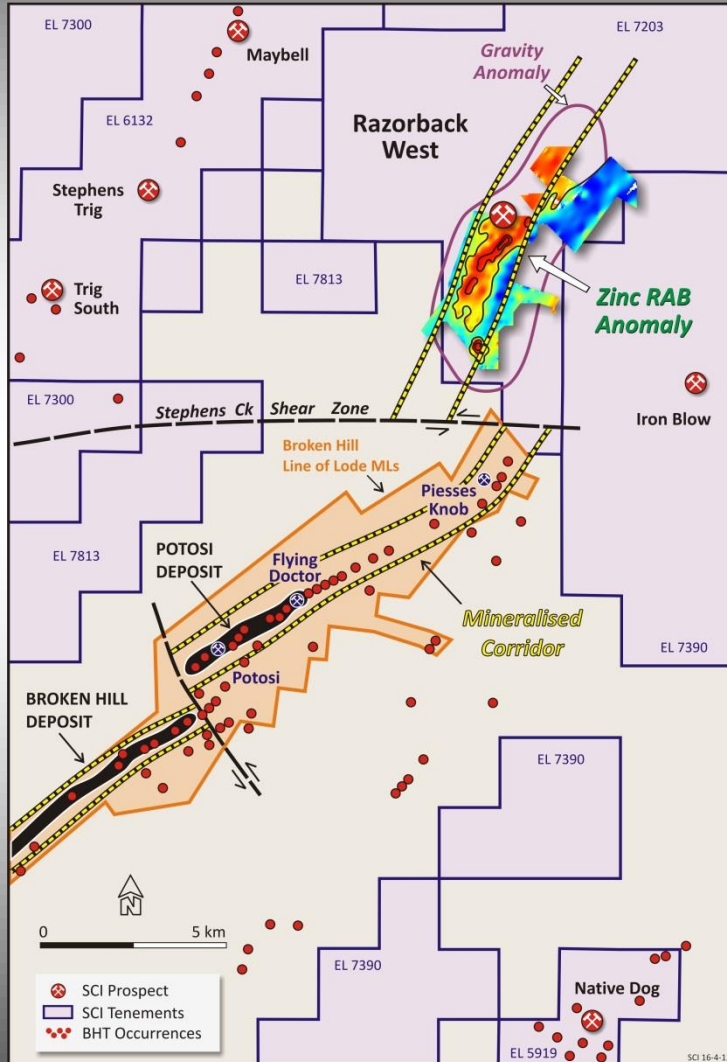


Regional Longitudinal Section



Results in ASX Releases 1 November 2017, 16 November 2017

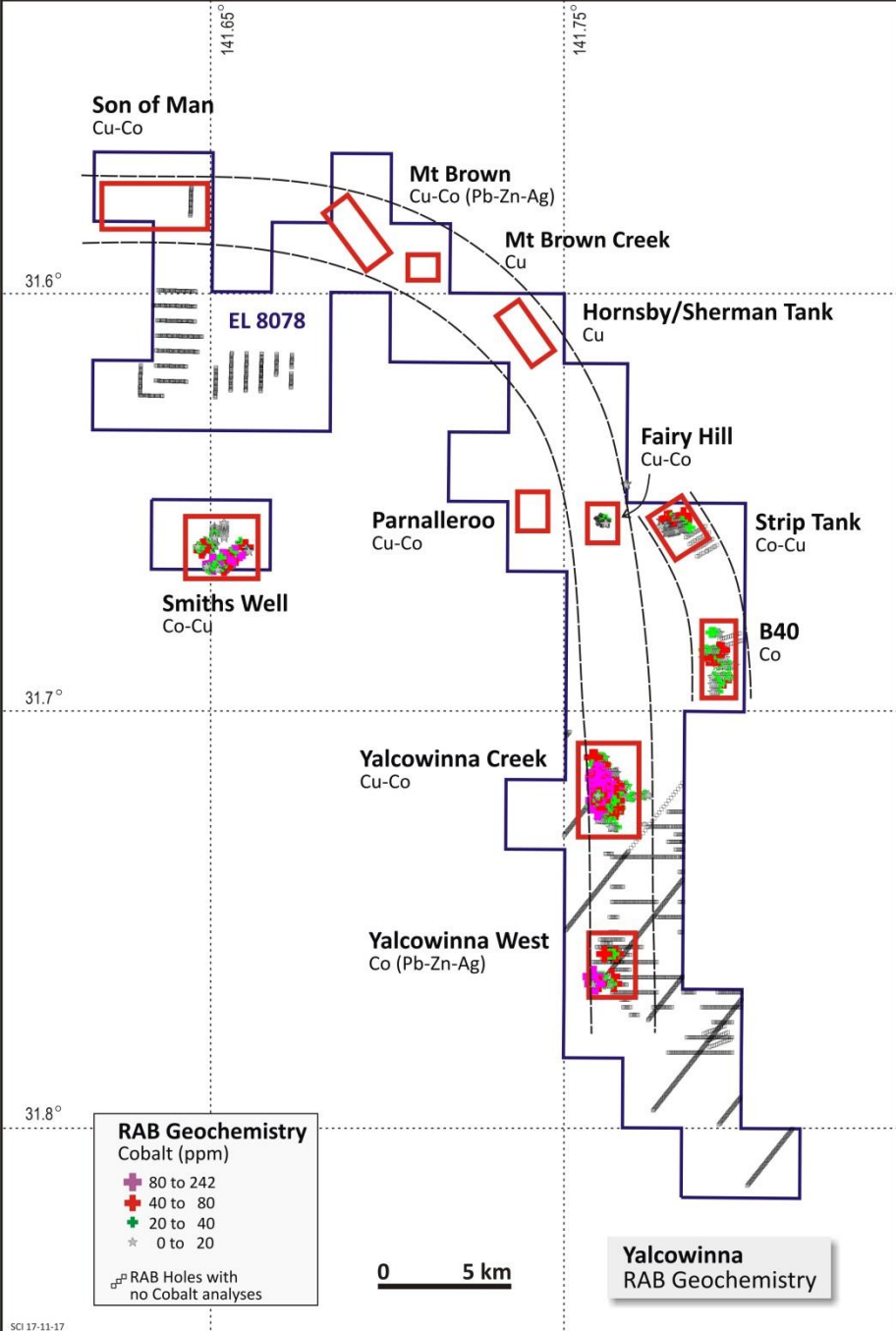
Razorback West Gravity



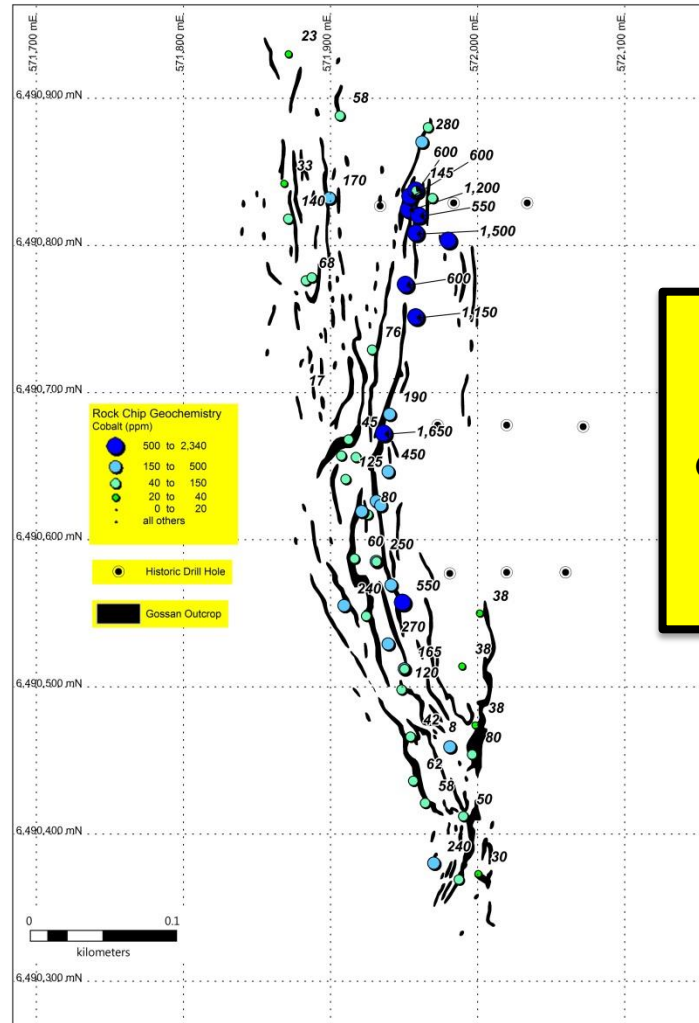
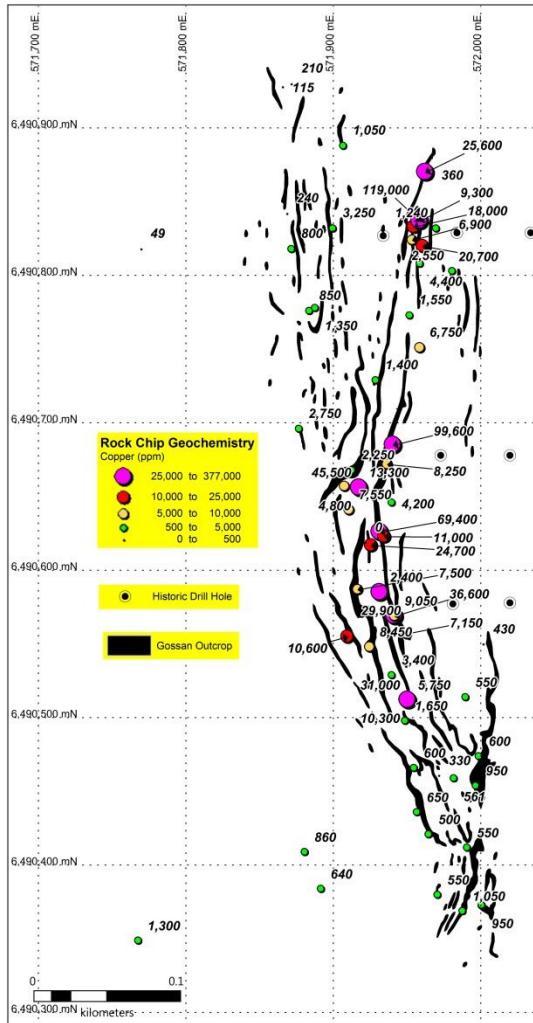
New projects

- Yalcowinna EL
- Copper and Copper-Cobalt belt over 25km
- 11 prospects
- High grade rock chip samples eg Yalcowinna Creek
 - Copper: 11.9%, 6.9%, 4.6%, 3.7%
 - Cobalt: 1650 ppm, 1500 ppm, 1200 ppm
- Best results 37.7% Copper and 0.23% Cobalt

Previous reports pertaining to this project include PlatSearch (ASX:PTS) Release 9 January 2006, Quarterly Reports ASX:PTS March 2006, June 2006 and March 2007 and SCI Releases 21 November 2012 and 17 October 2017.

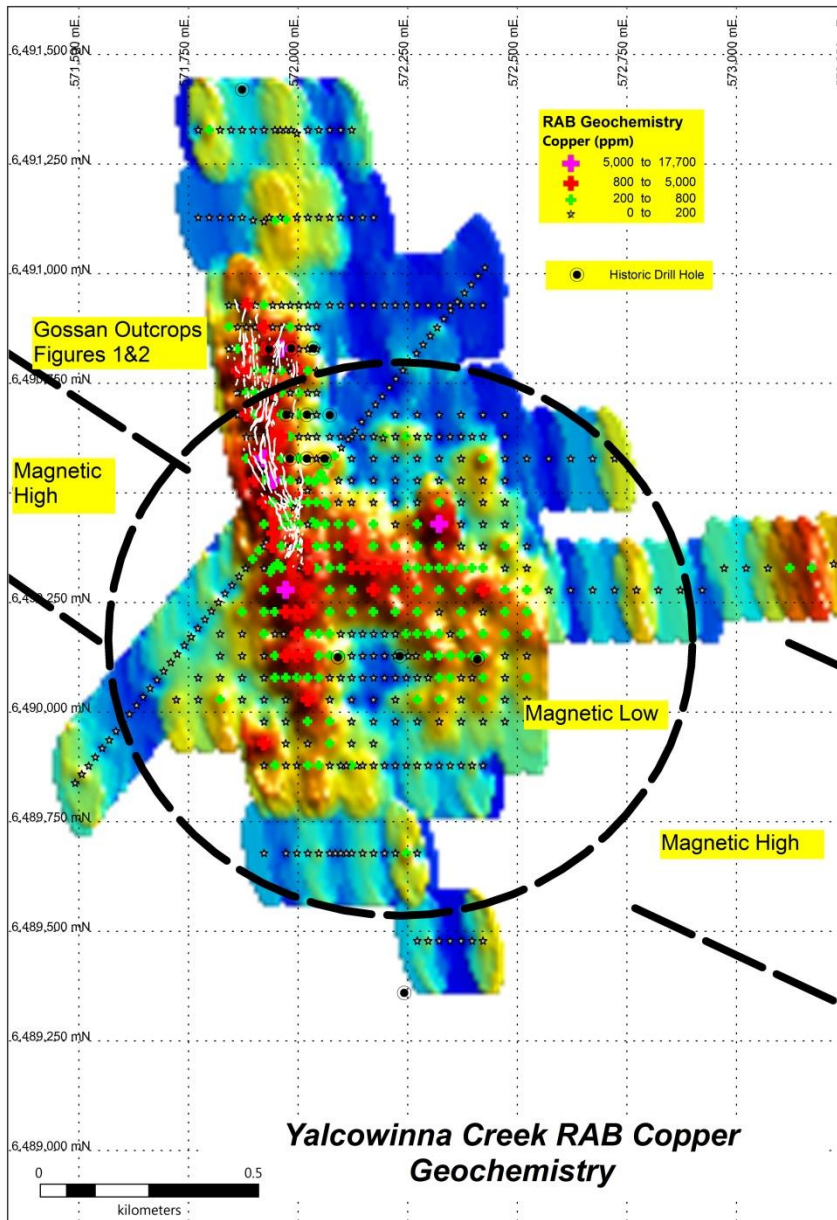


Yalcowinna Creek



Elevated copper and cobalt in gossans over 700 metres strike

Yalcowinna Creek



- Gossans outcrop and host elevated copper-cobalt
- RAB drilling is area of cover shows open copper (and cobalt) anomaly extends north-south for over 1.5 km
- Historic Drilling of N-S trend shows broad zones (20 to 40 metres) of copper cobalt at grades 0.1 to 0.4 copper and 100 to 800 ppm cobalt
- NW-trending RAB anomaly- untested feeder zone

Next steps

Work Program

| Item | Comment |
|----------------|---|
| Copper Blow | <ul style="list-style-type: none">• Geophysics: Ground gravity, magnetics (continues)• Follow-up RC and diamond drilling |
| Razorback West | <ul style="list-style-type: none">• Geophysics: Detailed ground gravity survey• Follow-up RC and diamond drilling |
| Yalcowinna | <ul style="list-style-type: none">• Prospect sampling and ranking• Ground IP surveys (Yalcowinna Creek)• First pass RC drilling |
| | |

Anticipated Milestones

Copper Blow

- New round of drilling before year end
- High quality drill targets

Razorback West

- Ground geophysical surveys to assist drill target definition

Yalcowinna

- Field geology and sampling. Project ranking

- Follow-up RAB and RC and diamond drilling of geophysical targets

- RAB and RC drilling of geophysical targets

- Ground IP surveys
- RAB and RC drilling

- Follow up drilling of RAB anomalies
- Detailed resource drilling

- Detailed resource drilling

- RC and diamond drilling

Nov

Dec-March

April-Sept

Summary

- Company-making opportunity in both Zinc and Copper-Cobalt
- Two existing sulphide treatment plants within 20km
- Supportive JV partner
- Broken Hill Mining Centre: ready access to infrastructure and workforce
- SCI attractively priced with low market cap
- Multiple activities and milestones in next 12-months

SILVER CITY MINERALS LIMITED

ABN 68 130 933 309



ASX Code: SCI

Level 1, 80 Chandos Street
St Leonards
NSW 2065
Australia
+61 2 94371737

www.silvercityminerals.com.au