

## Bauxite Hills Mine Commissioning

### Highlights

- Critical infrastructure Barge Loading Facility successfully commissioned
- Haul road construction progressing well
- Camp, fuel farm and other infrastructure remains on track for completion by the end of 2017
- Project construction remains on budget and on track

### CONSTRUCTION OVERVIEW

#### Marine Infrastructure

All major marine infrastructure has reached practical completion including the Barge Loading Facility ("BLF"), Marine Offloading Facility, cyclone moorings, navigational aids and tidal gauge.

The BLF was recently wet commissioned with first product being loaded onto the conveyor system and into a barge. The commissioning was a success with the BLF construction completed in only 5 months.

In the lead up to production, Metro will also commission the product sampling station and on-belt analyser which are used to support mining operations, specifically quality control.

Simon Finnis, Managing Director commented:

"Our team and partners really need to be congratulated on a fantastic effort to get the major items of infrastructure complete, and commissioned in this timeframe. A special thanks must go to Transshipment Services Australia, who were the Project Managers for the BLF and marine infrastructure for a job well done.

We are becoming increasingly excited about next year, and are confident we will be in production, as we have promised, early in Q2, 2018."



## Bauxite Hills Mine Commissioning



Barge Loading Facility Wet Commissioning



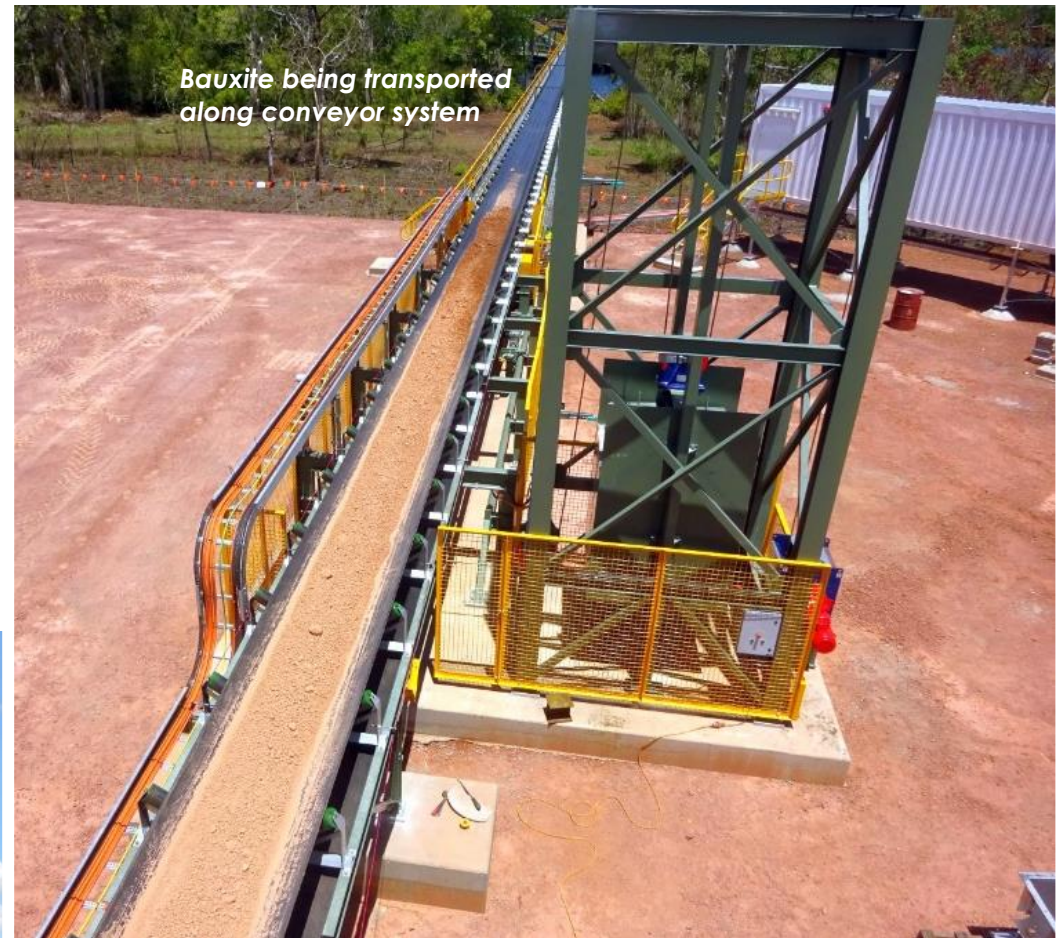
## ***Barge Loading Facility Aerial View***



***Bauxite Hills Mine General Manager Charles Easton & Transshipment Services Australia Director Ian Junk***



## Barge Loading Facility Wet Commissioning





## Accommodation Camp construction

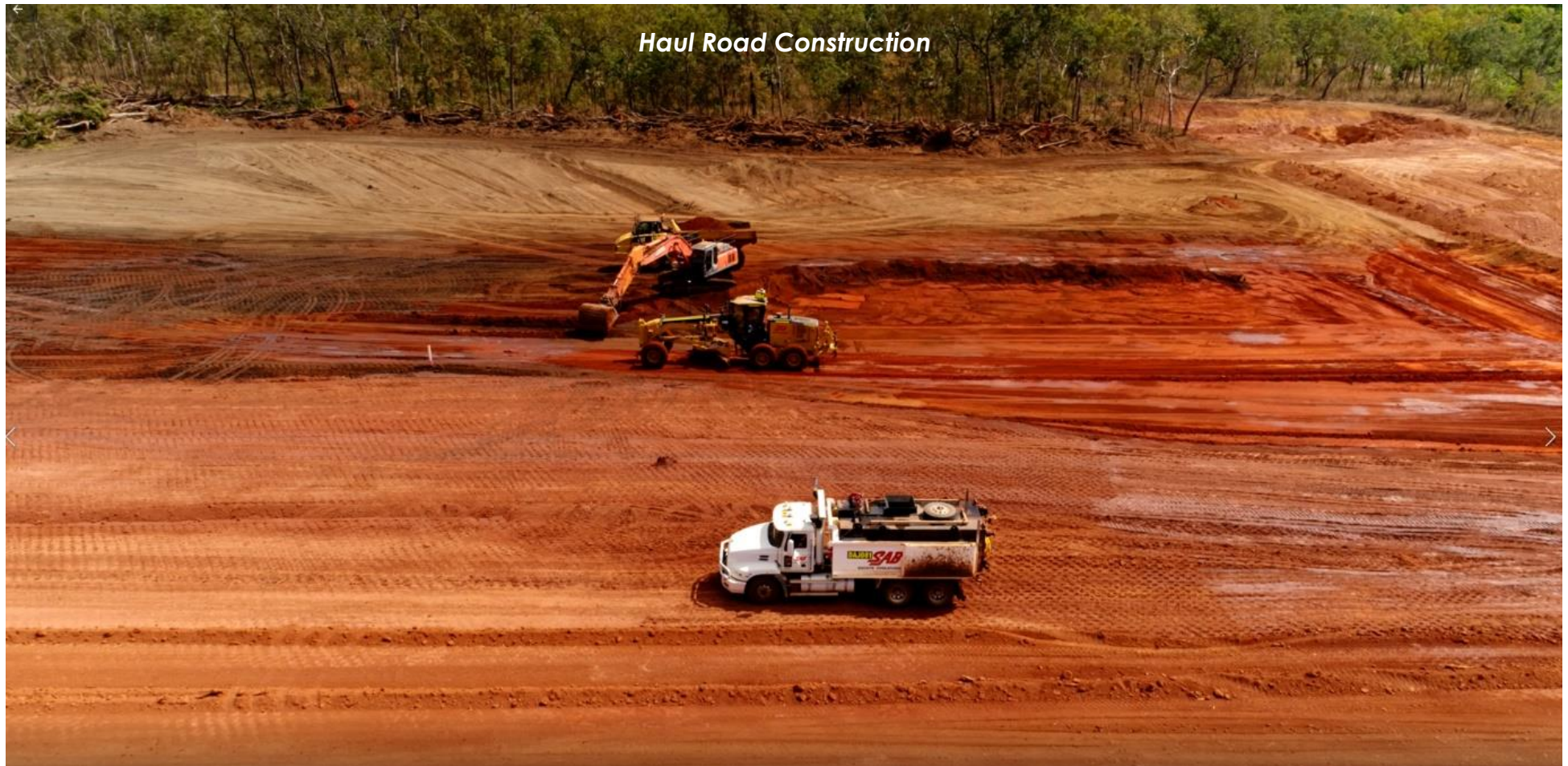
The construction of the accommodation camp remains on track for completion prior to the end of the year. The majority of new units are in place and new common user facilities such as the kitchen, wet mess and gynasium are also being installed.





## Civils Progress

The civils work package is progressing well and haul road construction is advancing. The haul road to the BH6 deposit, where mining will likely commence, is complete. Work continues on the haul road to the BH1 deposit.



ASX: MMI | ACN 117 763 443 | Further Information: P: +61 (0) 7 3009 8000 | E: [info@metromining.com.au](mailto:info@metromining.com.au) | [www.metromining.com.au](http://www.metromining.com.au)  
Contact: Simon Finnis, MD & CEO | Scott Waddell, CFO & Co Sec | Head Office: Lv 2, 247 Adelaide St, Brisbane | GPO Box 10955, Brisbane Q 4000

This announcement has been prepared for publication in Australia and may not be released or distributed in the USA. This announcement does not constitute an offer to sell, or a solicitation of an offer to buy, securities in the United States or any other jurisdiction. Any securities described in this announcement have not been, and will not be, registered under the US Securities Act of 1933 (as amended) and may not be offered or sold in the United States except in transactions exempt from, or not subject to, registration under the US Securities Act and applicable US state securities laws.