

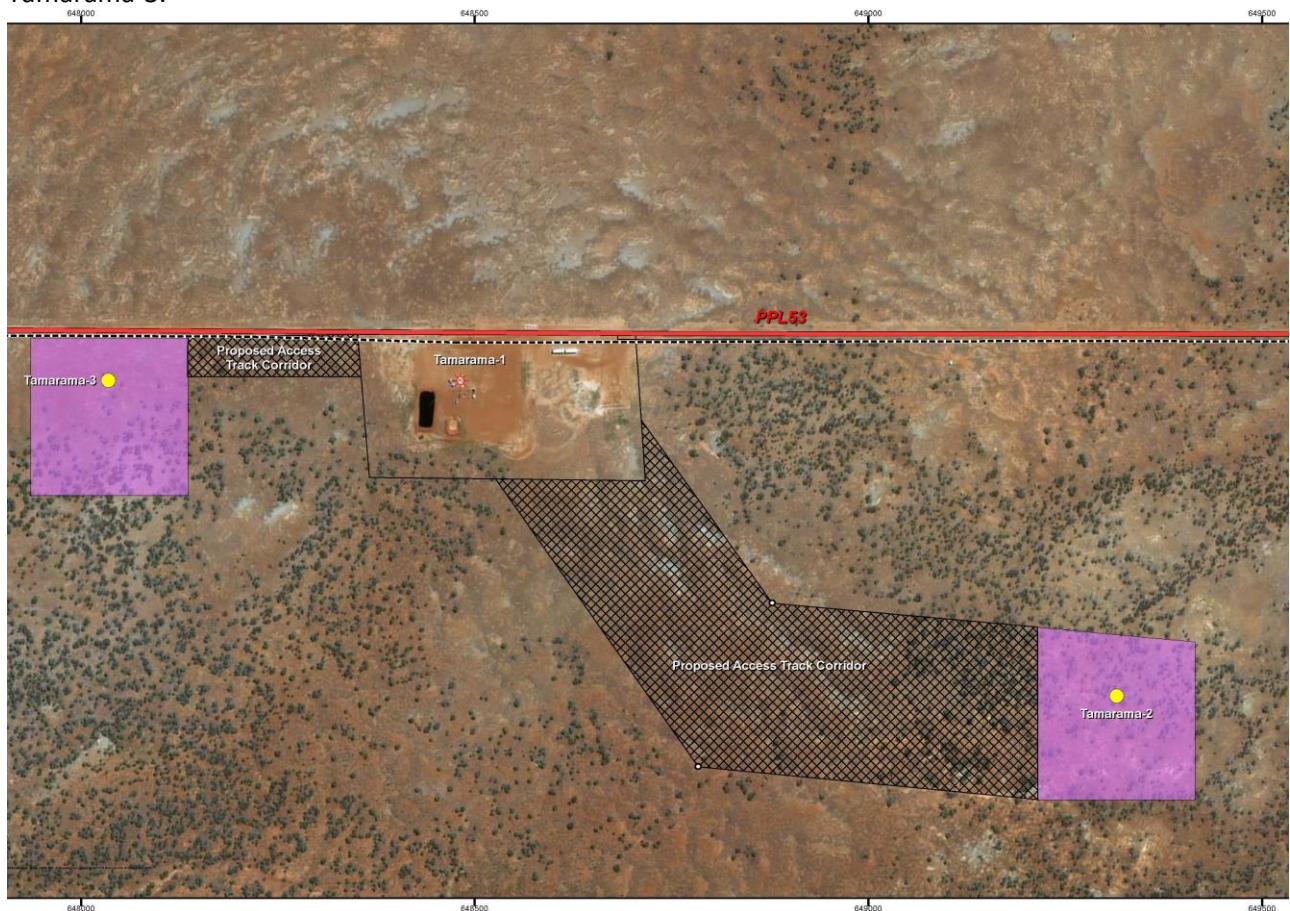


Real Energy Corporation Limited  
Level 3, 32 Walker Street North Sydney NSW 2060  
Telephone 02 9955 4008

## Update on Tamarama 2 & 3

- Location and design of Tamarama-2 & Tamarama-3 wells completed
- Long lead items purchased or ordered for the wells
- Application made for Gas Acceleration Program Funding

**Sydney: 19 February 2018** , Cooper Basin focused oil & gas exploration company, Real Energy Corporation Limited (ASX:RLE) ("Real Energy "), is pleased to provide shareholders with an update on the planned drilling of the next two wells at the Windorah Gas project in the Cooper Basin Queensland, Tamarama-2 and Tamarama-3.



### **Planned drilling of Tamarama-2 and Tamarama-3**

The Company is pleased to confirm that location and design of the Tamarama-2 and Tamarama-3 wells have been completed, long lead items have been ordered or already purchased by the Company and plans are well advanced for the drilling. The location of the Tamarama 1 in relation to Tamarama-2 and Tamarama-3 is shown on the map together with the proposed access tracks.

Real Energy has gathered considerable information from the drilling, testing and fracture stimulation of Tamarama-1 and this is being used to design the pilot well configuration. Tamarama 2 and 3 wells will be drilled as deviated wells and completed with casing and perforations suitable for multi-stage fracture stimulation specifically in the Cooper Basin stress regime. As reported in the recent Quarterly Report the Company has not yet contracted a drilling rig but recent discussions have been productive and may allow the Company to execute a drilling contract shortly.

The Company has applied to the Australian Government's Gas Acceleration Program Funding. If successful, the funds would assist the Company to accelerate its path to production.

### **For further information, please contact:**

Real Energy: Managing Director - Scott Brown +61 2 9955 4008

Released through: Ben Jarvis, Six Degrees Investor Relations, +61 (0) 413 150 448

Or visit the website: [www.realenergy.com.au](http://www.realenergy.com.au)

Twitter: <https://twitter.com/RealEnergyCor>

### **Geological Information**

*The geological information in this announcement relating to geological information and resources is based on information compiled by Mr Lan Nguyen, who is a Member of Petroleum Exploration Society of Australia, the American Association of Petroleum Geologist, and the Society of the Petroleum Engineers and has sufficient experience to qualify as a Competent Person. Mr Nguyen consents to the inclusion of the matters based on his information in the form and context in which they appear. The information related to the results of drilled petroleum wells has been sourced from the publicly available well completion reports.*

### **About Real Energy Corporation**

Real Energy is an oil and gas exploration and development company with a focus on the Cooper Basin, Australia's most prolific onshore producing petroleum basin. Real Energy has 100% ownership in 2 large permits in Queensland – ATP 927P & ATP1194PA.

Real Energy is focusing initially on the Toolachee and Patchawarra formations. These formations are well-known throughout the basin for holding and producing gas. Seismic interpretation in conjunction with existing petroleum well data has determined that the Toolachee and Patchawarra formations are significant across much of our acreage.

