



Real Energy Corporation Limited
Level 3, 32 Walker Street North Sydney NSW 2060
Telephone 02 9955 4008

REAL ENERGY TO COMMENCE HIGH IMPACT COOPER BASIN DRILLING IN EARLY APRIL

- **Drilling contract with Ensign International executed**
- **Contract signed for two firm appraisal wells Tamarama- 2 & Tamarama- 3 in ATP927P**
- **Preparation for field operations underway**
- **Fully funded for the drilling of 2 wells**
- **Pilot production to be established if wells are successful**
- **Real well placed to unlock significant value from its prospective Cooper Basin acreage**

Sydney, 16th March 2018: Cooper Basin focused oil & gas exploration company Real Energy Corporation Limited (ASX: RLE) (“Real Energy”) advises that it has signed a contract with Ensign International for drilling services at its 100%-owned ATP927P exploration permit in the Windorah project, Cooper Basin, in early April 2018.

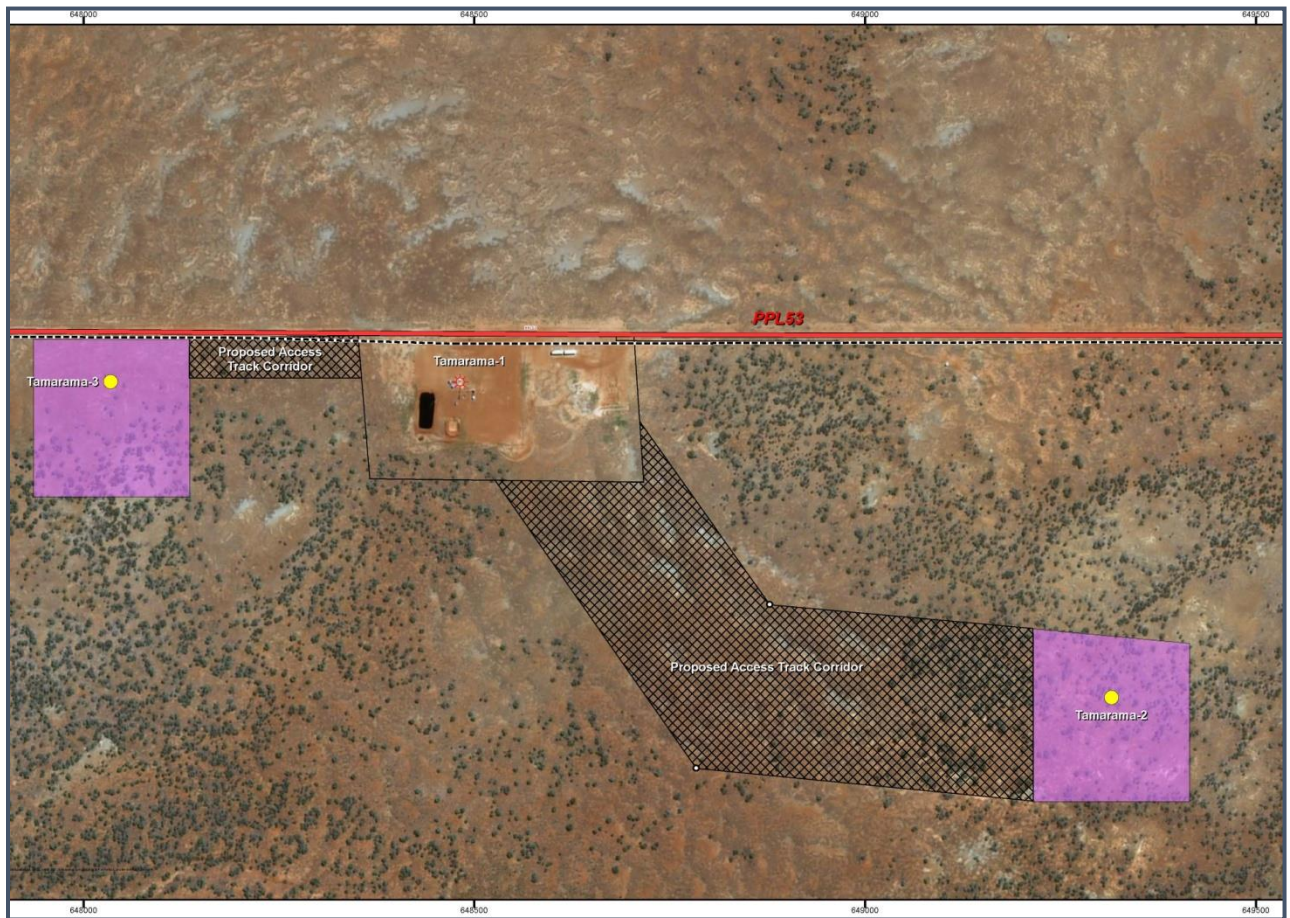
A contract has been signed for Rig 964 to drill the two pilot development wells, Tamarama - 2 & Tamarama - 3. If the wells are successful, Real Energy will look to establish pilot production out of the wells and look to connect flow lines so that sales gas can then be supplied to Australia’s East Coast gas market.

Wellsite and access roads construction for the drilling of the two wells will commence within the next few days. Real Energy is implementing the Research and Development it has gathered from the drilling, testing and fracture stimulation from Tamarama-1, and this knowledge is being used to work up a drilling program for a deviated well design suitable for multi-stage fracs for both wells.

These wells represent a major catalyst to potentially convert Real Energy’s contingent resources into reserves, and ultimately into production. The other aim is to start proving up the delivery of basin centred gas play within ATP927 which has a prospective resource estimated by De Golyer & Mac Naughton to be 13.7 Trillion Cubic Feet of gas initially in place.

Real Energy’s Managing Director, Scott Brown said: “As one of the few independent oil & gas companies with a substantial and 100%-owned acreage holding in the Cooper Basin, we are ideally placed to take

advantage of the significant unlocked value that prospects in the Basin hold. Real Energy has a strong financial position and is fully funded for the drilling of these wells."



The location of Tamarama-1, Tamarama-2 and Tamarama-3

"The commencement of drilling is an important milestone for Real Energy and follows a great deal of planning and investment to reach this stage. The drilling and fracking of Tamarama -1, and the subsequent gas flows from the well, have taught us a great deal and we are applying some of the methodology that we have developed to the drilling of Tamarama -2 and Tamarama -3."

"This is potentially a huge gas resource, based on the prospective resource in place of over 13 Tcf, and we have a lot of scope to progressively develop Windorah which sits within a proven hydrocarbon province." These next two wells mark the next step in this process and we will provide regular updates on the drilling progress once the first well is spudded."

Real Energy: Managing Director - Scott Brown +61 2 9955 4008.

Released through: Ben Jarvis, Six Degrees Investor Relations, +61 (0) 413 150 448

Or visit the website: www.realenergy.com.au

Twitter: <https://twitter.com/RealEnergyCor>

Geological Information

The geological information in this announcement relating to geological information and resources is based on information compiled by Mr Lan Nguyen, who is a Member of Petroleum Exploration Society of Australia, the American Association of Petroleum Geologist, and the Society of the Petroleum Engineers and has sufficient experience to qualify as a Competent Person. Mr Nguyen consents to the inclusion of the matters based on his information in the form and context in which they appear. The information related to the results of drilled petroleum wells has been sourced from the publicly available well completion reports.

About Real Energy Corporation

Real Energy is an oil and gas exploration and development company with a focus on the Cooper Basin, Australia's most prolific onshore producing petroleum basin. Real Energy has 100% ownership in 2 large permits in Queensland –ATP 927P & ATP1194PA.

Real Energy is focusing initially on the Toolachee and Patchawarra formations. These formations are well-known throughout the basin for holding and producing gas. Seismic interpretation in conjunction with existing petroleum well data has determined that the Toolachee and Patchawarra formations are significant across much of our acreage.

