



ASX:SVL Corporate Presentation March 2018

Disclaimer

The material in this presentation contains certain forecasts and forward-looking information, including regarding possible or assumed future performance or potential growth of Silver Mines Limited (“SVL”). Such information is not a guarantee of future performance and involves unknown risks and uncertainties, as well as other factors, many of which are beyond the control of SVL. Actual results and developments may differ materially from those expressed or implied by these forward-looking statements depending on a variety of factors.

No representation or warranty, expressed or implied, is made or given by or on behalf of SVL, any of SVL’s directors, or any other person as to the accuracy or completeness or fairness of the information or opinions contained in this presentation and no responsibility or liability is accepted by any of them for such information or opinions or for any errors, omissions, misstatements, negligent or otherwise, or for any communication written or otherwise, contained or referred to in this presentation.

Accordingly, neither SVL nor any of the SVL directors, officers, employees, advisers, associated persons or subsidiary undertakings shall be liable for any direct, indirect or consequential loss or damage suffered by any person as a result of relying upon the statement or as a result of any admission in, or any document supplied with, this presentation or by any future communications in connection with such documents and any such liabilities are expressly disclaimed.

Nothing in this material should be construed as either an offer to sell or a solicitation of an offer to buy or sell securities.

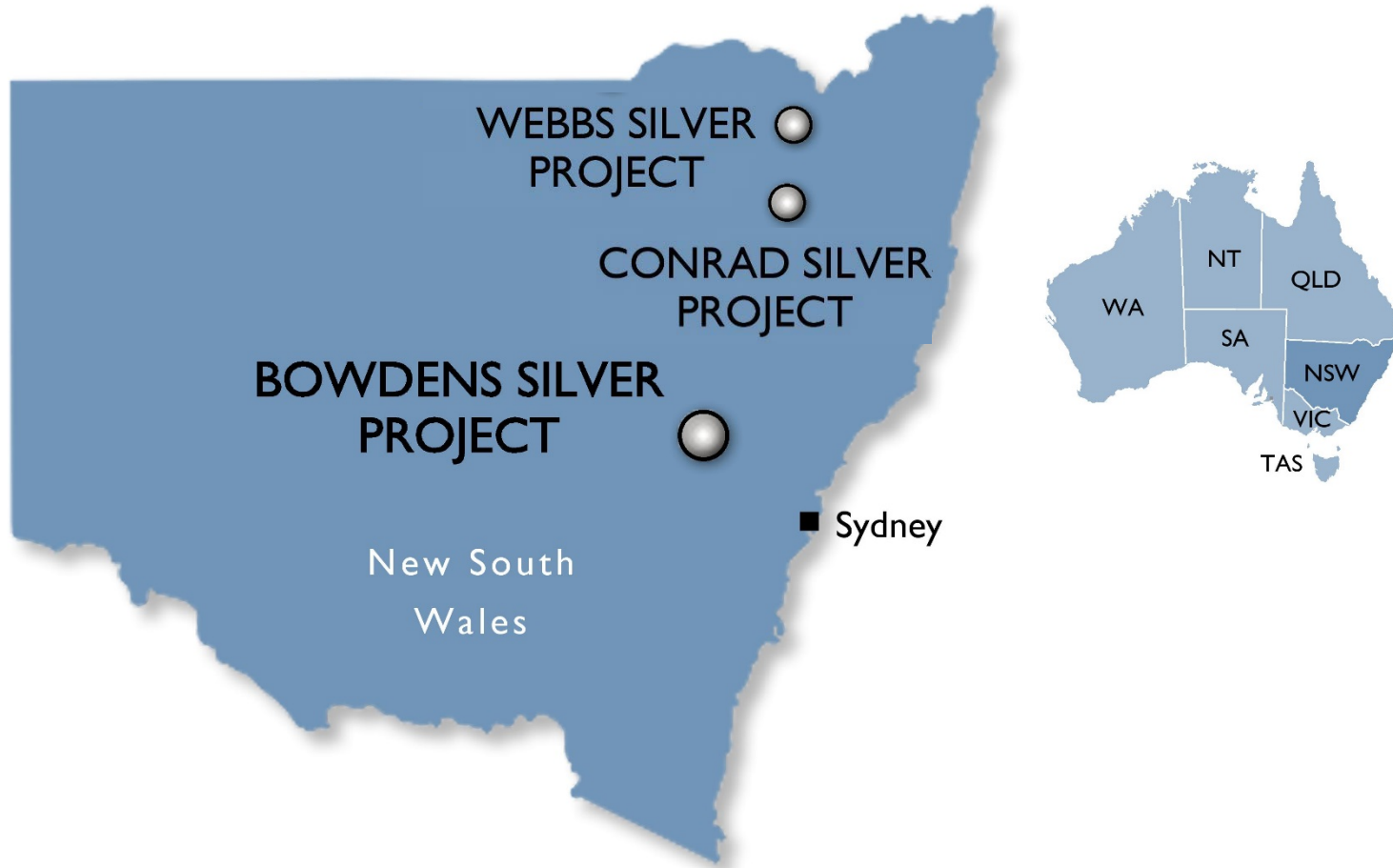
Silver Mines Limited Introduction

- Late Stage Feasibility for the development of one of the largest undeveloped precious metals deposits in Australia and one of the largest new silver developments globally.
- Recent major resource upgrade with 275 Moz silver equivalent resource confirmed including a higher grade core.
- Major Exploration Targets:
 - Confirmed significant extensions to mineralisation.
 - Discovered new high-grade zones at depth.
 - Discovered new base-metal massive sulphide including gold.
 - Discovered porphyritic felsic intrusion under the current resource.
- Experienced board and management.
- New South Wales, Australia is a safe quality jurisdiction.

Silver Mines Limited Snapshot

<u>Capital Structure</u>		ASX:SVL	
Shares on Issue	444.0m	Options	
Current Share Price	A\$0.045	Jun 2018 @ \$0.30	10.7m
Undiluted Market Capitalisation	A\$20.0m	Jun 2019 @ \$0.30	9.0m
Cash end Dec 2017	A\$1.5m	3 year milestone @ \$0.20	5.0m
<u>Directors</u> (refer to Appendix 4)		<u>Institutional Shareholders</u>	
Keith Perrett, Chairman		BlackRock	Konwave
Anthony McClure, Managing Director		Paradice	APAC
Peter Langworthy, Non Executive Director		Tribeca	Old Mutual
Jonathan Battershill, Non Executive Director		Karara	
<u>Assets</u>			
Silver Mines Resource Inventory, Australia (refer to Appendices 1, 2 and 3)		184 Moz Silver	309 Moz Silver Equivalent
Bowdens Silver, New South Wales, Australia		163 Moz Silver	275 Moz Silver Equivalent
- late stage Feasibility Study			
- substantial exploration play and program			

Quality Jurisdiction





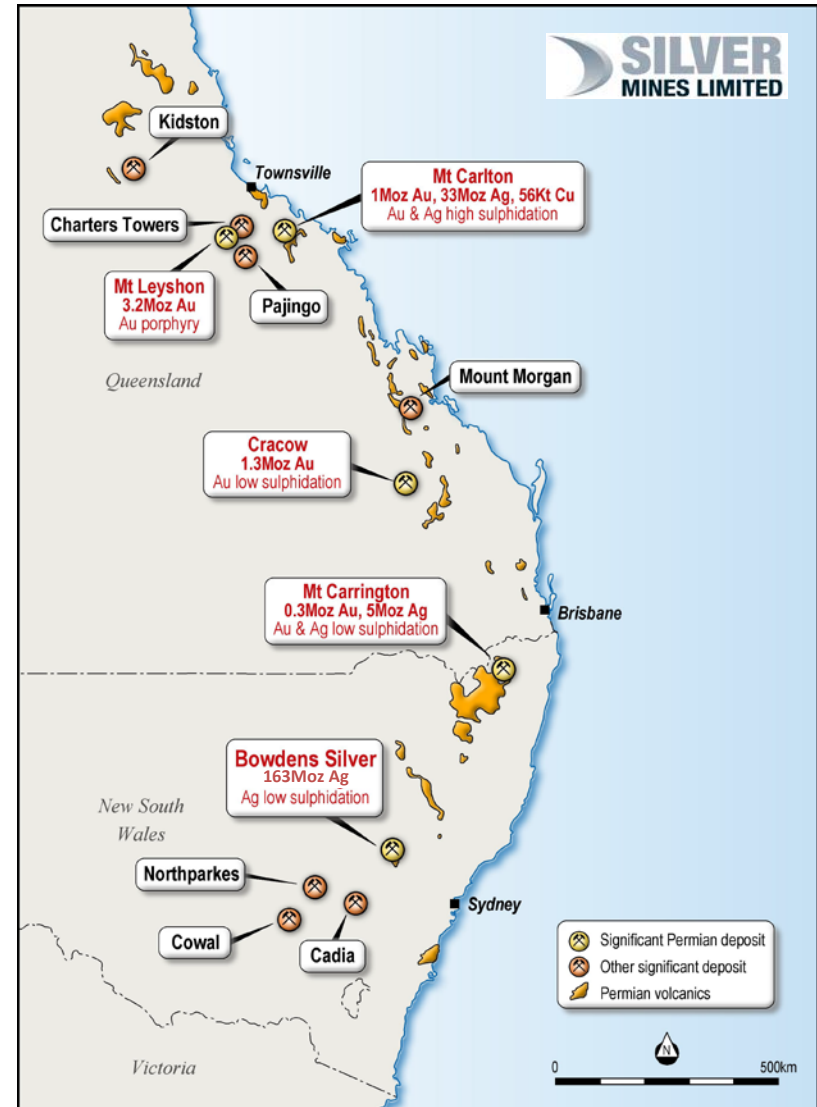
Bowdens Silver

*The Largest Undeveloped Silver
Project in Australia*



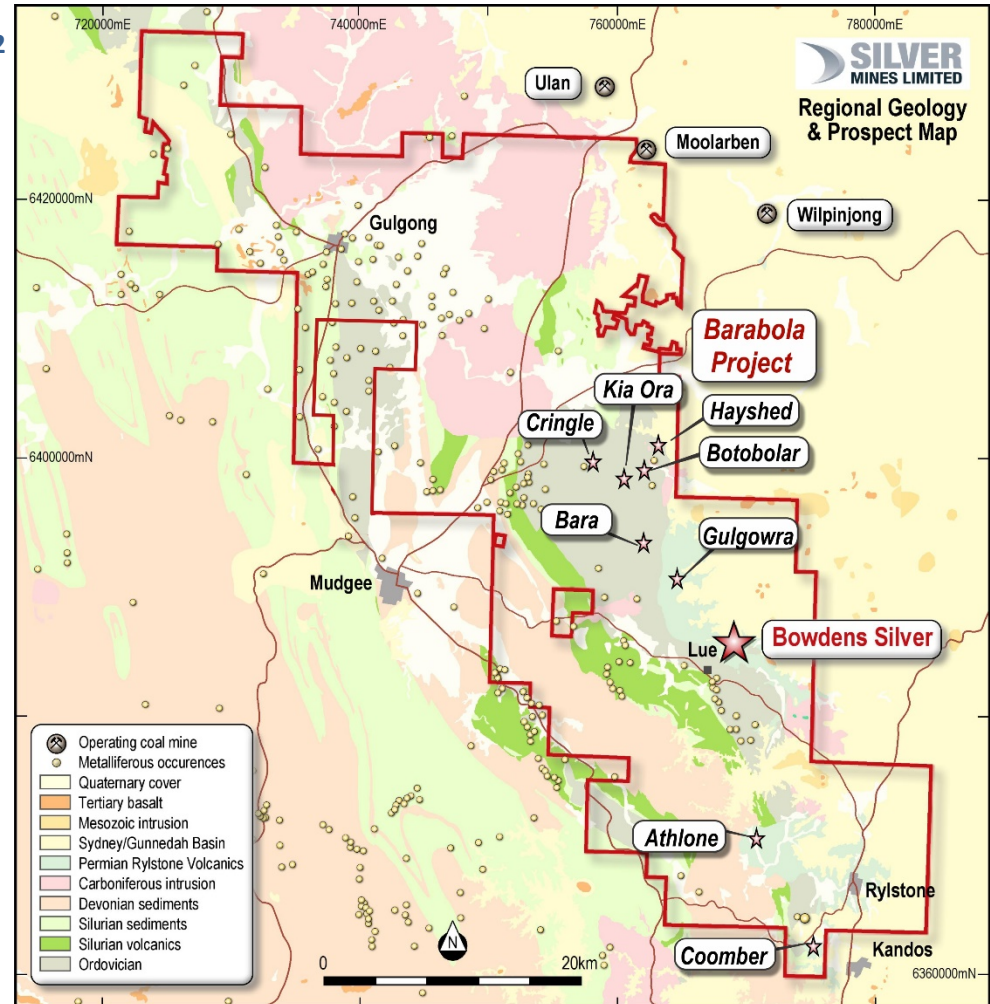
The Permian of Eastern Australia

- The Permian volcanics of eastern Australia contain high-grade, epithermal and porphyry related gold, copper, silver and base-metal deposits.
- The Bowdens Silver Project is a SILVER rich system but has geological affinities to GOLD and COPPER rich deposits such as Mt Leyshon and Mt Carlton.
- Silver Mines' exploration strategy involves:
 - Extending the current deposit; and
 - Developing targets at depth, including to test for a telescoped system zoned from:
 - $Ag > Zn + Pb$
 - $Zn + Pb > Ag$
 - $Au + Cu > Zn + Pb > Ag$



Regional Geology

- Extensive tenement holding (1,654 km² = 408,000 acres).
- Northeast corner of Lachlan Fold Belt, coal bearing Sydney and Gunnedah basins to the east.
- Wide range of prospective deposit types over different time periods (Siluro-Devonian, Carboniferous, Permian).
- Bowdens Silver epithermal, base metal VMS, Orogenic Gold, Intrusion Related Porphyry.



Quality Jurisdiction

- **New South Wales, Australia a quality jurisdiction.**
- **Major minerals projects in the state include;**
 - **Cadia/Ridgeway, Newcrest (650,000oz Au, 65,000t Cu pa).**
 - **Cowel, Evolution (260,000oz Au pa).**
 - **Northparkes, CMOC (60,000t Cu, 50,000oz Au pa).**
 - **Plus coal mining exports (170 million tonnes pa).**
- **Bowdens Silver Classified as “State Significant Development”.**

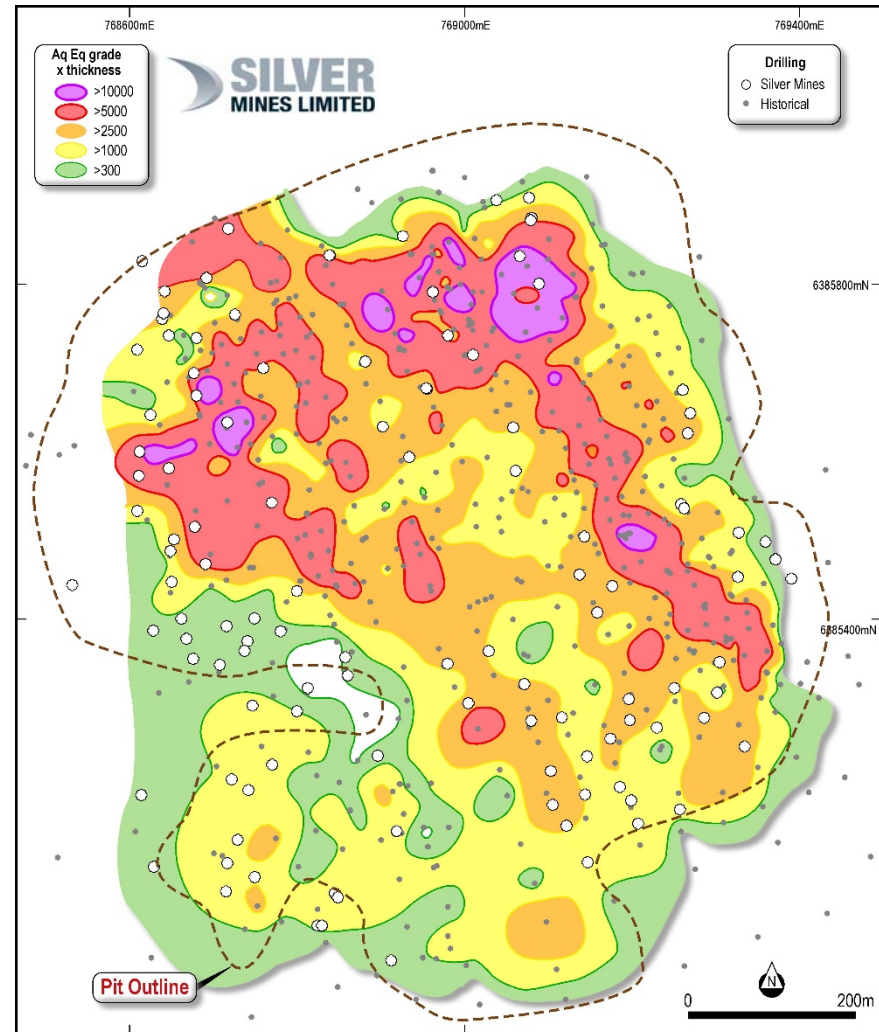
Drilling

Silver Mines drilling has focused on:

- Both infill and extensional drilling.
- Oriented core drilling enabling a detailed structural interpretation of high-grade zones.
- Drilling intersecting basement Ordovician rocks resulting in new discoveries at depth.
- Metallurgical drilling complete.

Company	DD	RC	Total
CRA, Silver Std, Golden Shamrock	8,764	40,965	49,729
Kingsgate	6,146	12,785	18,931
Silver Mines	13,252	11,863	25,115
Total	28,162	65,613	93,775

Total drilling on the project



Bowdens Silver Resource (as at September 2017)

30 g/t Ag Eq Cut	Tonnes (Mt)	Silver Eq. (g/t)	Silver (g/t)	Zinc (%)	Lead (%)	Million Ounces Silver	Million Ounces Silver Eq.
Measured	76	72	45	0.37	0.25	111	175
Indicated	29	59	31	0.38	0.25	29	55
Measured & Indicated	105	68	41	0.37	0.25	140	230
Inferred	23	60	31	0.40	0.28	23	45
Total	128	67	40	0.38	0.26	163	275

Refer to Appendix 1 for further details

Completed September 2017 - compared to the 2012 Mineral Resource Estimate this resource represents a:

- **51% increase in total silver equivalent ounces**
- **22% increase in silver ounces**
- **45% increase in total tonnes**
- **Measured and Indicated Resources increased from 59% to 82% of the total resource.**

Bowdens Silver Resource (as at September 2017)

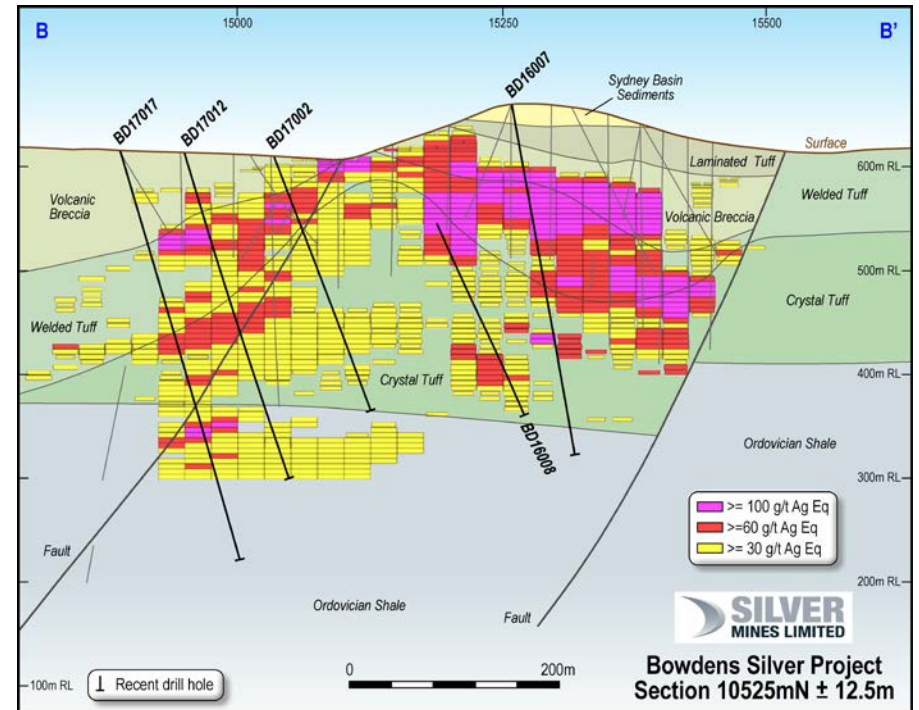
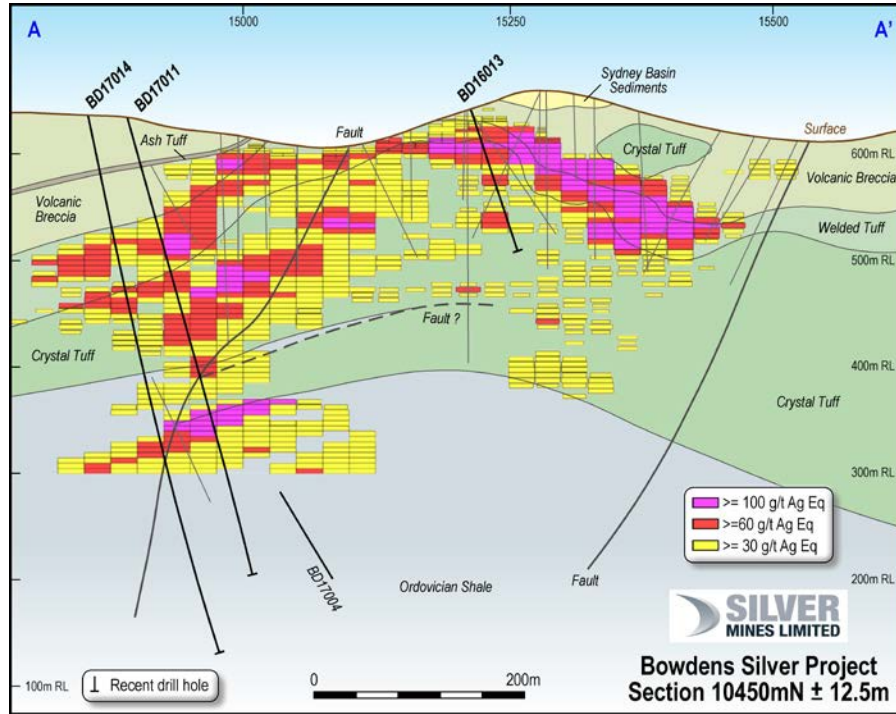
Cut off g/t Ag Eq	Tonnes (Mt)	Silver Eq. (g/t)	Silver (g/t)	Zinc (%)	Lead (%)	Million Ounces Silver	Million Ounces Silver Eq.
60	46.1	106.3	69.1	0.51	0.36	102	158
80	25.1	135.5	93.4	0.57	0.42	75	109
100	15.1	163.7	117.5	0.62	0.47	57	80
120	9.6	192.3	141.4	0.67	0.53	44	59

Refer to Appendix 1 for further details

The Bowdens Silver Deposit remains open...

- plunging to the northwest;
- at depth beneath the “Bundarra” lens in the north;
- and down dip to the west.

Block Model





Bowdens Silver

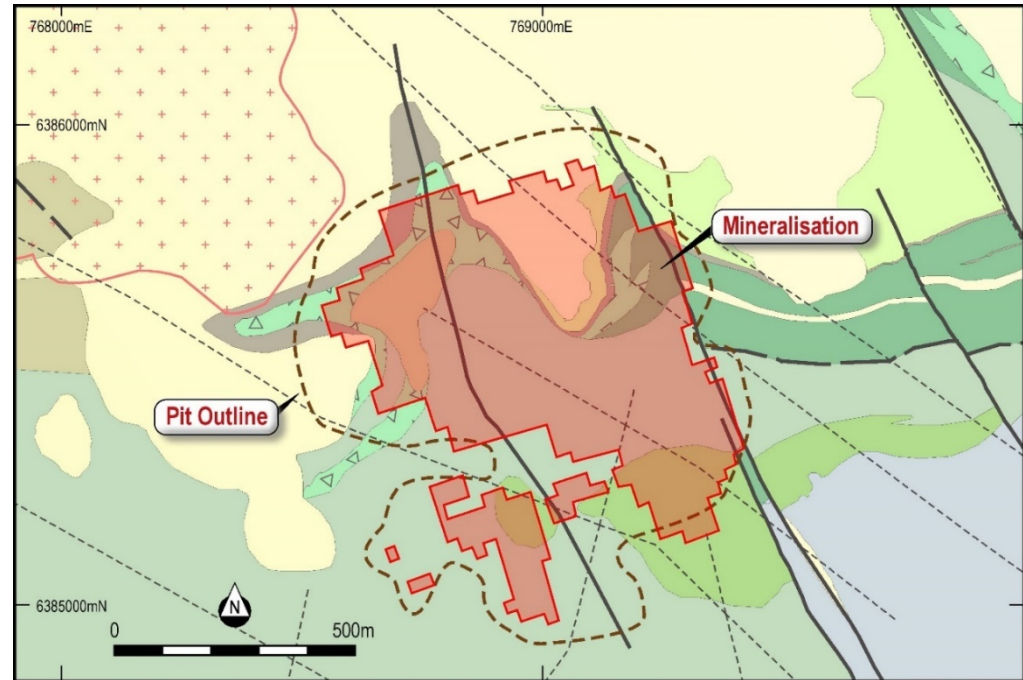
Fast Track through Feasibility to Development

Mine plan to initially focus on high-grade / near surface

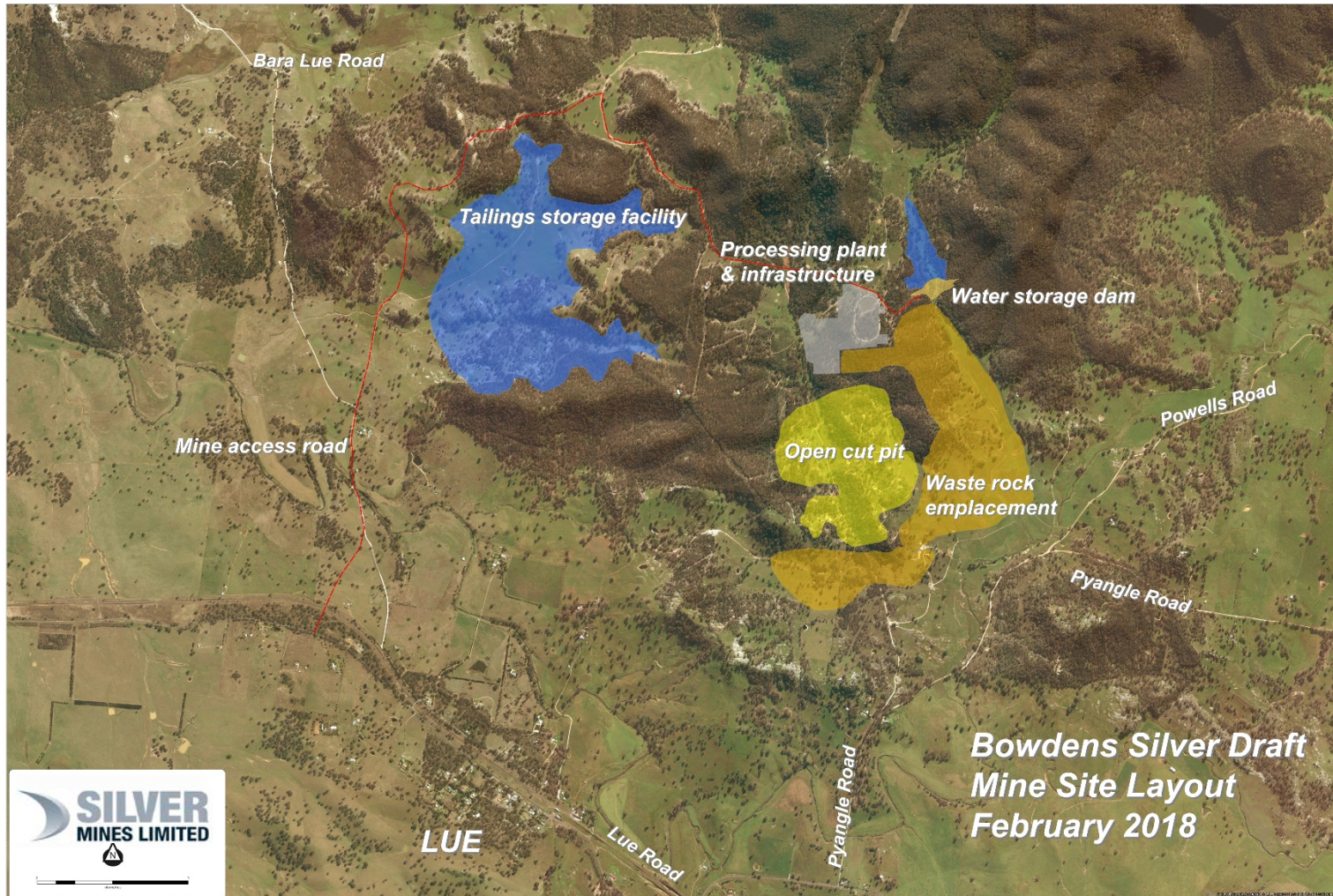


Bowdens Silver Project Development

- Classified as “State Significant Development” in New South Wales.
- Feasibility Study works by GR Engineering, AMC and ATC Williams.
- Smaller, more robust lower impact development planned.
- 2.0 million tonnes per annum ore.
- Production around 5 million ounces per year plus zinc and lead credits
- Very low strip ratio - less than 2:1.
- Mine life minimum around 15 years (likely to be much longer).
- Development capital investment circa A\$200m.
- Production of silver/lead concentrate and zinc concentrate for sale and treatment offsite.
- Feasibility Study to be complete late April 2018.



Bowdens Silver Development



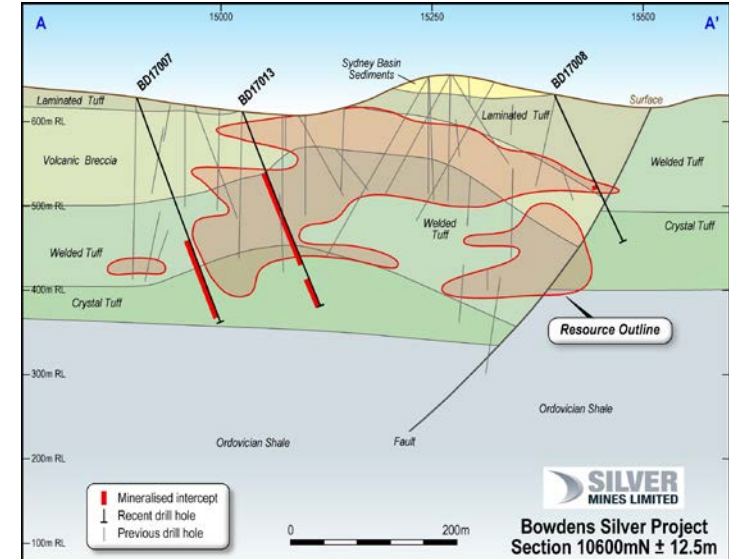
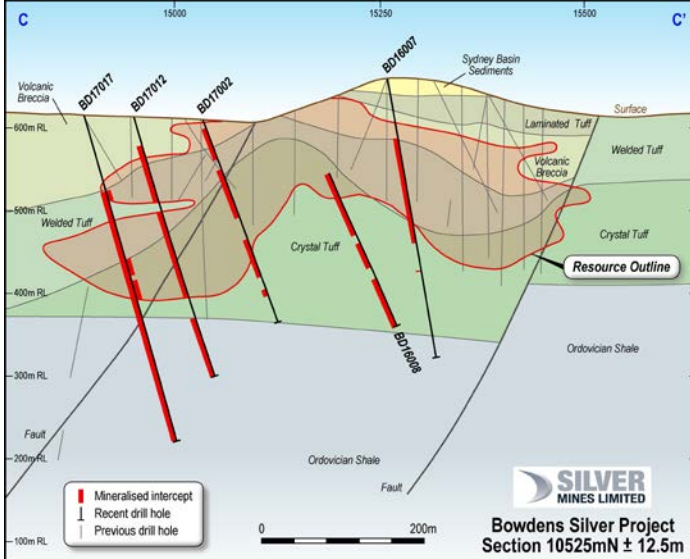
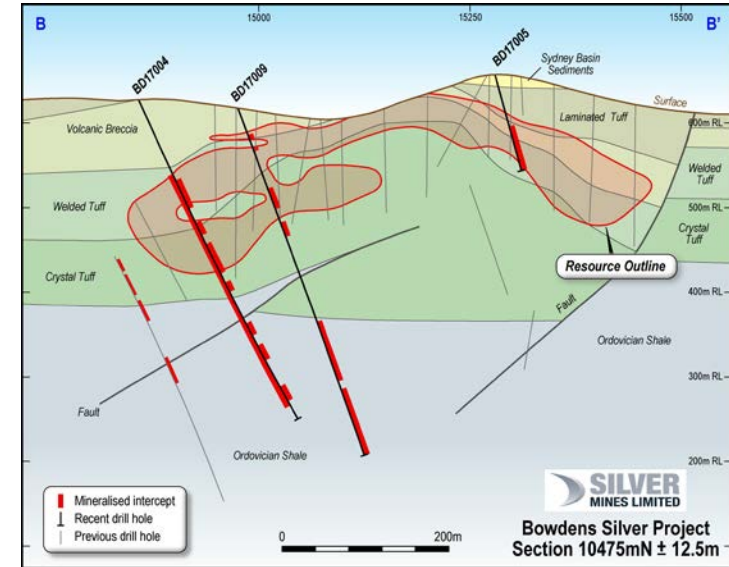
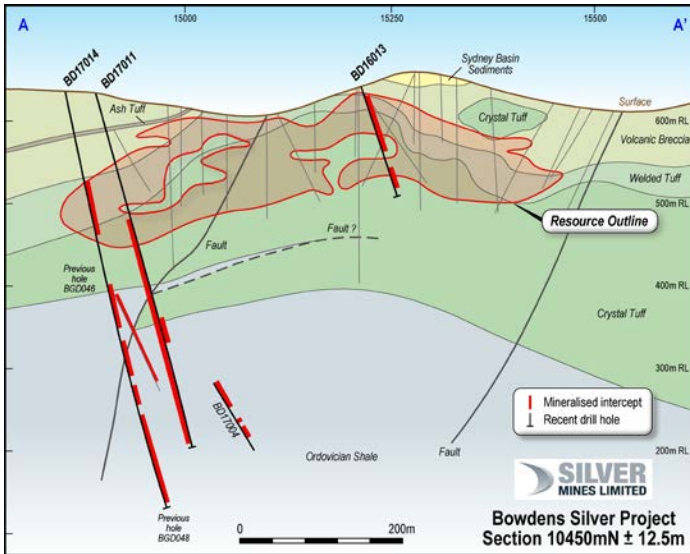


Bowdens Silver

*Exploration Upside – Building a
World Class Mineral Field*

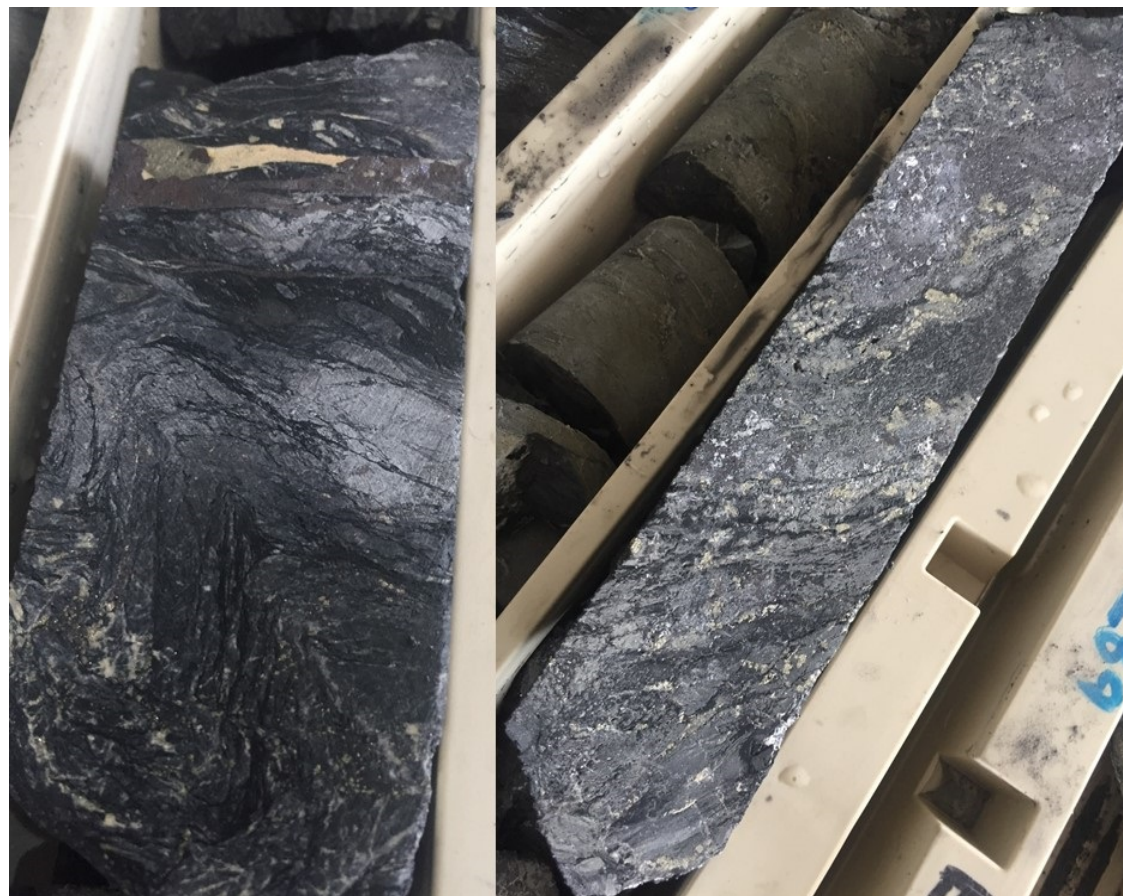


Drilling: Resource extensions at depth

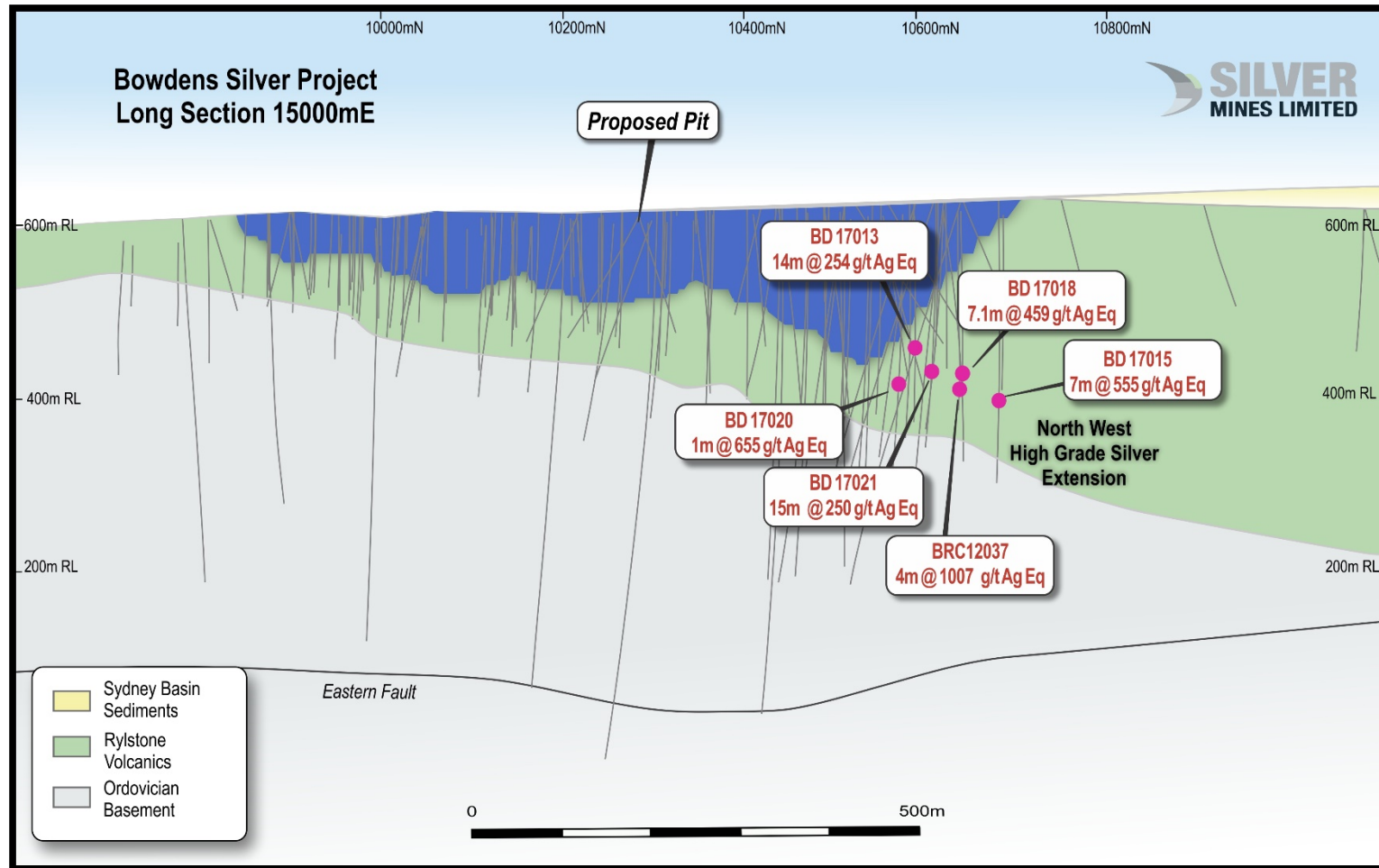


Massive Sulphide Discovery – Bowdens Deep

- Massive to semi-massive sulphide discovery.
- ~100 metres below the previous resource.
- Mineralised zone over 315 metres.
- Significant gold content.
- Results include:
 - 31.25m @ 3.24% Zn, 1.88% Pb, 23g/t Ag, 0.4g/t Au (218g/t AgEq) including;
 - 18.25m @ 4.6% Zn, 3.0% Pb 31g/t Ag, 0.52g/t Au (313g/t AgEq).
- The mineralised system is interpreted to be vectoring to the northwest and remains totally open along strike and down dip.



High Grade Silver Under the Planned Pit



Discovery of Porphyritic Intrusion – Bowdens Deep

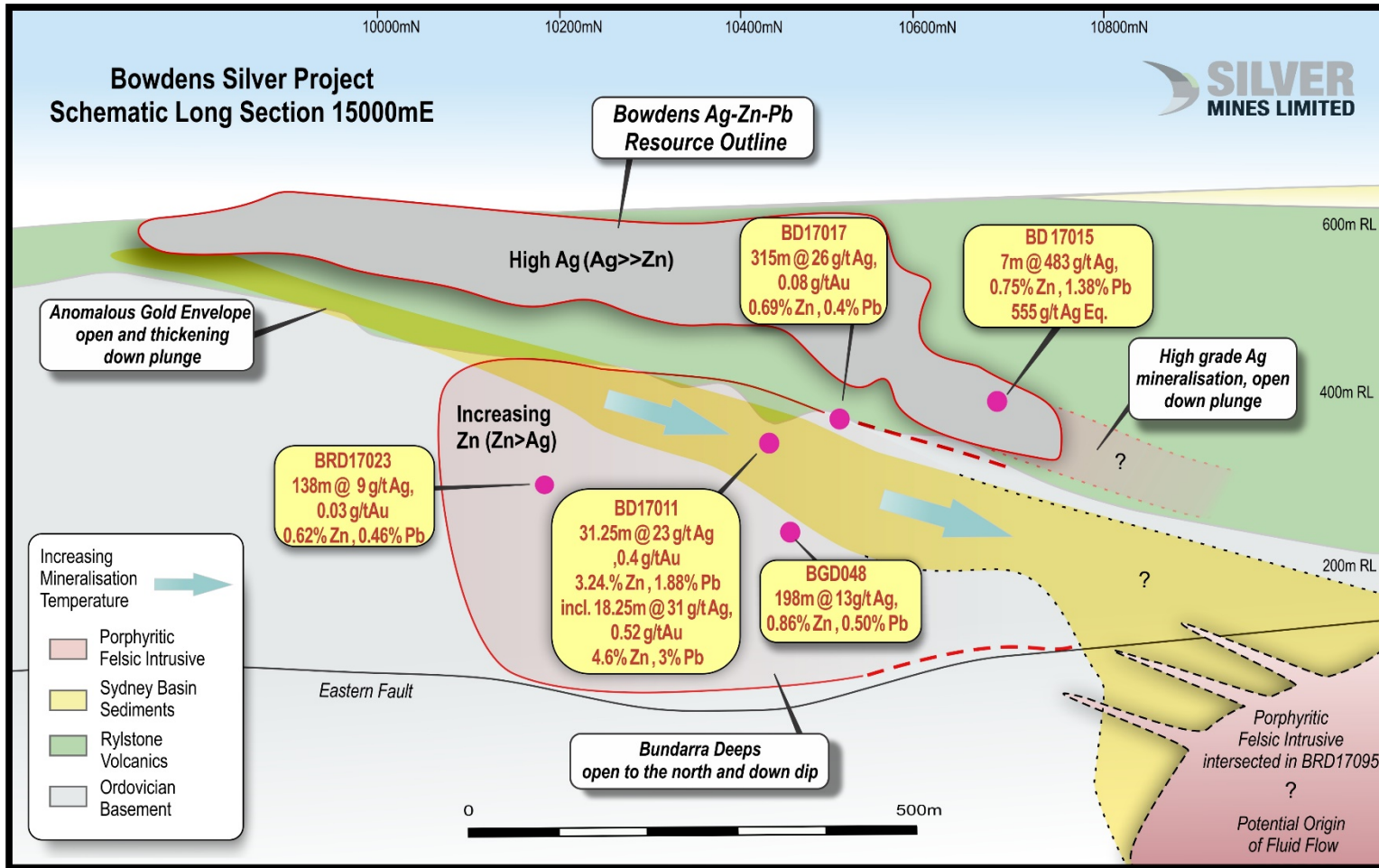
- Significant discovery of porphyritic felsic intrusion beneath the Bowdens Silver deposit.



- The intrusion is associated with strong metal zonation consistent with potential porphyry associated gold-copper mineralisation.

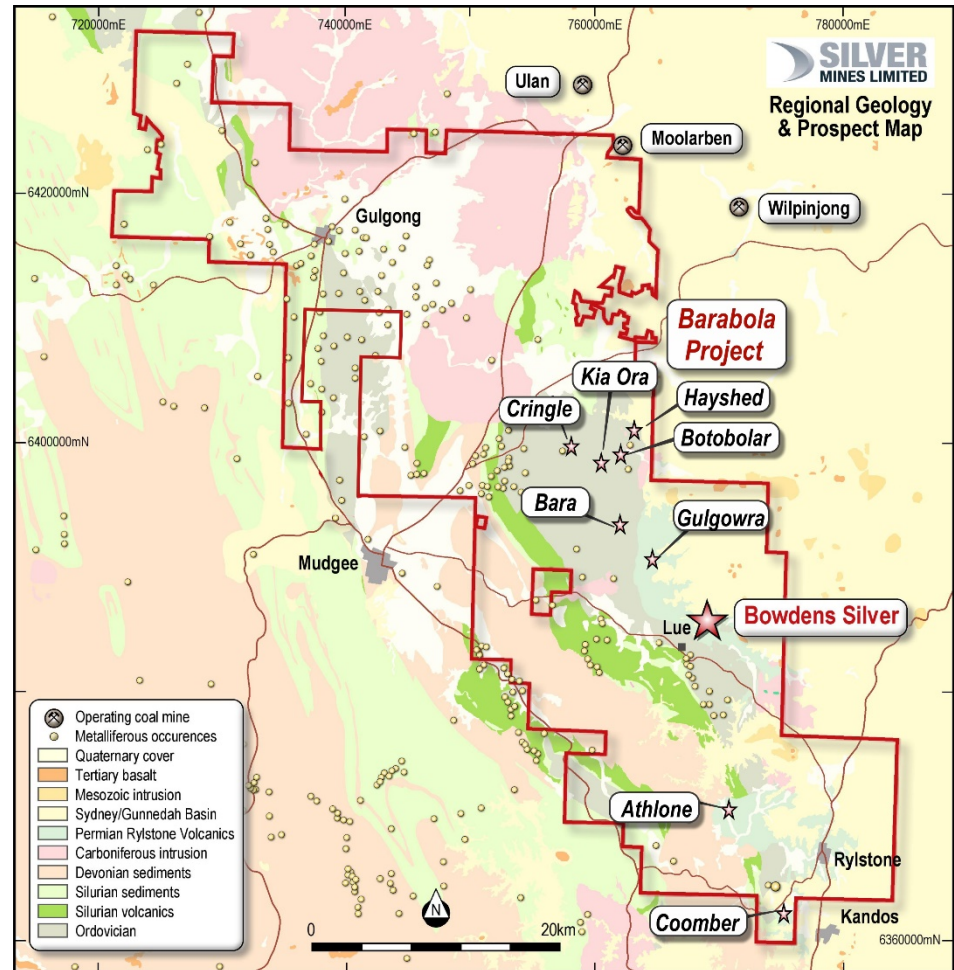
- Highly anomalous molybdenum content to the north west of Bowdens (high level indicator in mineralised porphyry systems).
- Nearby bonanza drill results including 7 metres at 555g/t silver-equivalent in the recent northern most drilling.
- The mineralised system is interpreted to be vectoring to the northwest and remains totally open along strike and down dip.

Unlocking a Major Mineralised System



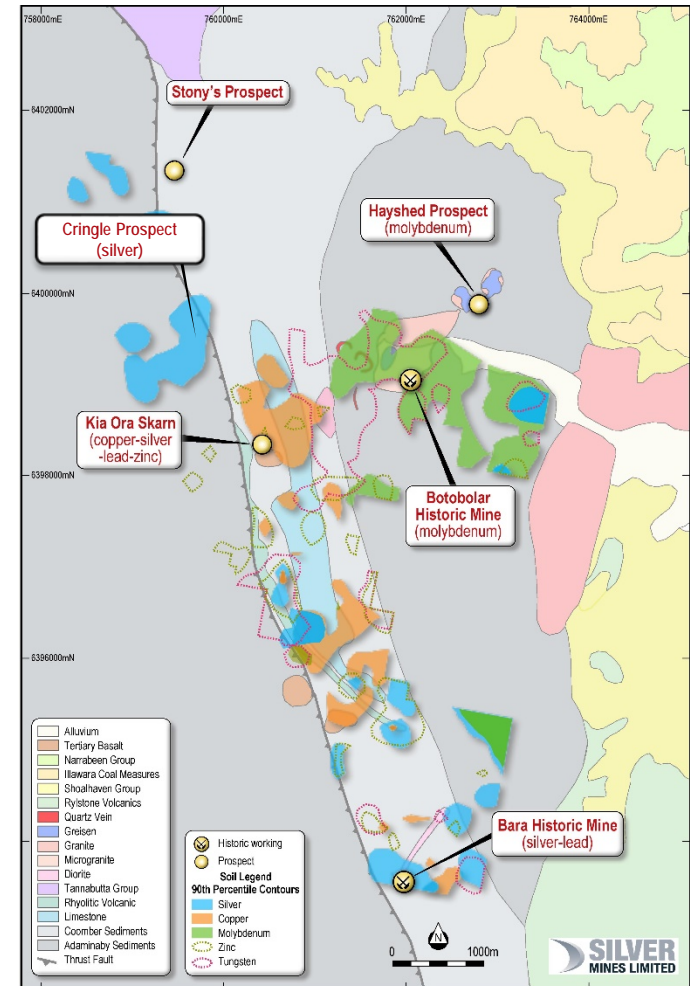
Regional Targets

- Over 60 kilometre strike length of mineral belt controlled by Silver Mines.
- Silver Mines has:
 - Undertaken detailed aeromagnetics.
 - Conducted extensive mapping and sampling programs.
 - Generated new targets of significant scale.
- Mineral deposit styles / potential include:
 - Bowdens Style (Ag-Zn-Pb).
 - Bundarra Style (Zn-Pb-Ag-Au).
 - Cadia style Porphyry (Cu-Au-Mo).
 - Shear hosted gold (e.g. McPhillamy's style) with base-metal association.
 - Volcanogenic Massive Sulphide (VMS).



Barabolar Regional Project

- Barabolar Project area located 10 kilometres northwest of the Bowdens Silver Deposit.
- 9000 x 2000 metre corridor of base-metal and silver soil anomalies.
- Mineralised skarn mapped over 3500 by 800 metres.
- Porphyry system type alteration assemblages.
- Several high order prospects:
 - Kia Ora Skarn (and proximal porphyry): Cu-Ag-Zn-Au.
 - Cringle: Large Ag anomaly.
 - Botobolar / Hayshed: Large molybdenum anomalies, abundant coarse molybdenite in associated felsic porphyry.

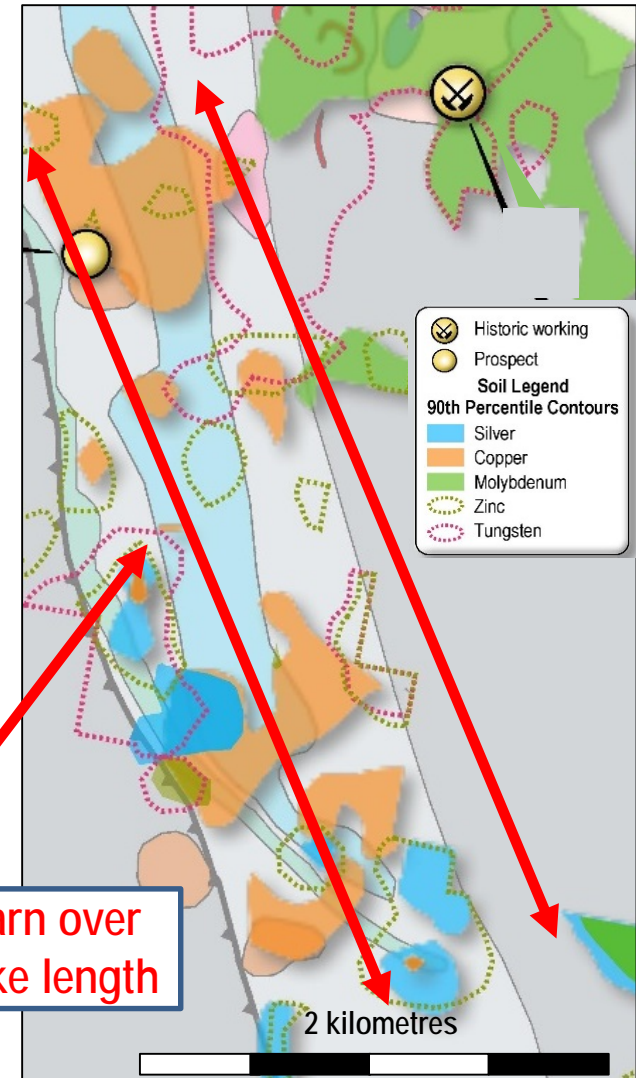


Kia Ora Skarn (Barabolar Project)

- Copper-Gold-Zinc-Lead-Silver Skarn.
- Mapped mineralised skarn over 3500 by 800 metres.
- Associated porphyry with chalcopyrite.
- Historic RAB drilling on periphery with Cu-Zn-Pb-Ag mineralisation.
- Main skarn not tested.
- Rock-chips with high grade Au-Cu-Zn.
- Next Steps -ground based geophysics and deep drill testing

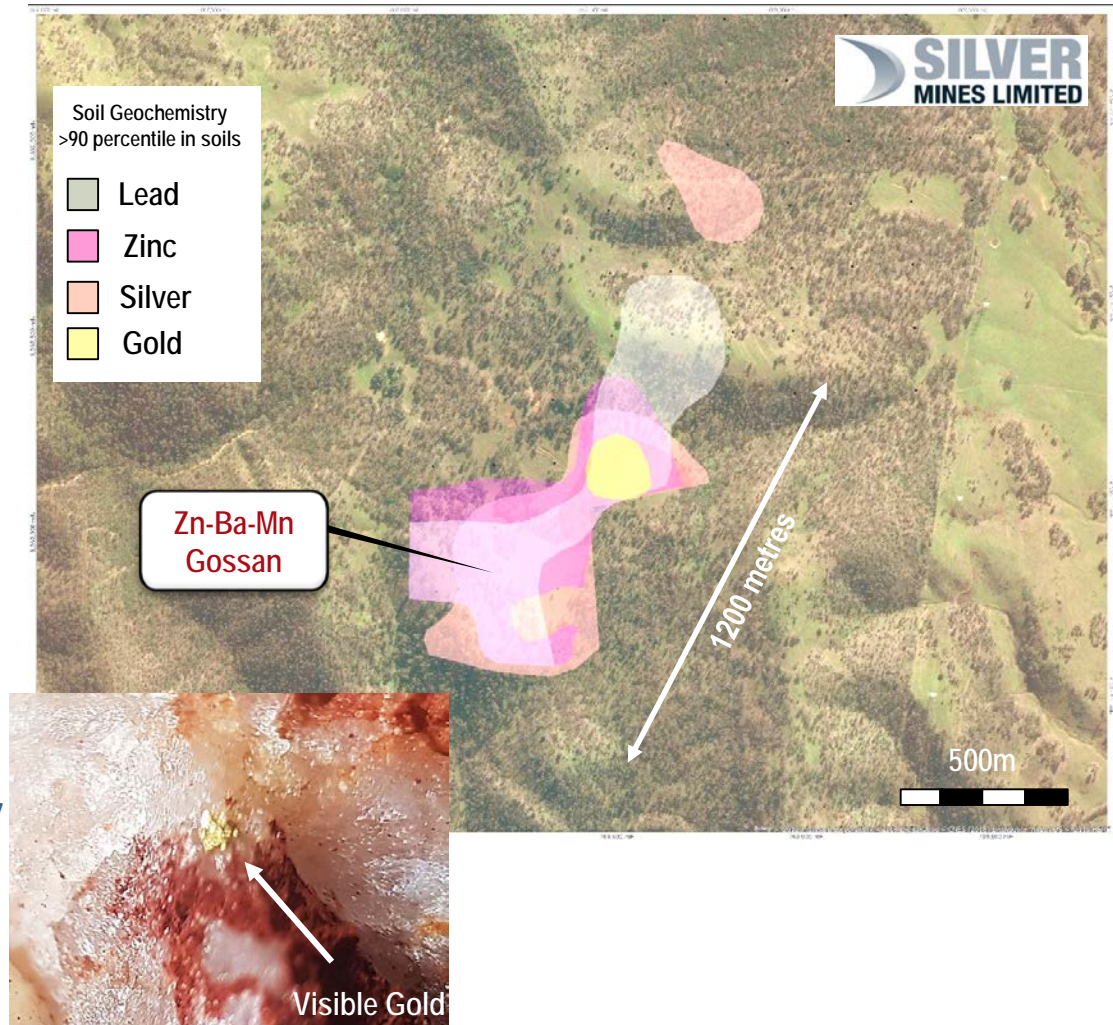


Mineralised skarn over 3500 metre strike length



Athlone Prospect

- Newly identified Au-Ag-Zn anomaly over 1200 metres.
- Targeting Volcanogenic Massive Sulphide (VMS).
- Manganese / barium gossans elevate in zinc.
- Quartz veins with visible gold.
- Magnetic anomaly over 2500 metres.
- Potential analogue to McPhillamy's (>2Moz):
- Next Steps - extend geochemistry to the northwest, ground based geophysics and drilling.



Summary

- ✓ Largest undeveloped silver deposit in Australia and one of the largest globally - extensive exploration play.
- ✓ Completion of maiden Reserve Statement April.
- ✓ Completion of Feasibility Study April.
- ✓ Exemplary geometry for low-strip ratio open pit.
- ✓ Confirmed significant extensions to mineralisation.
- ✓ Discovered new high-grade silver zones at depth.
- ✓ Discovered new base-metal massive sulphide including gold.
- ✓ Discovered porphyritic felsic intrusion under the current resource.
- ✓ Experienced management with history of wealth creation.
- ✓ Timing 'sweet spot' with macroeconomic trends.



*For further information please
contact: Anthony McClure,
Managing Director*



Appendix 1 - Silver Mines Resource Inventory

Deposit name	Tonnes (Mt)	Silver Eq. (g/t)	Silver (g/t)	Silver (Moz)	Silver Eq. (Moz)	Status
Bowdens Silver	128	67	40	163	275	100% owned
Webbs ¹	1.5	345	245	11.7	16.5	100% owned
Conrad ¹	2.6	206	105.4	9.0	17.5	100% owned
Total				184	309	

1. For further information on the Webbs and Conrad Projects refer to the Silver Mines Limited website.

Appendix 2 – Bowdens Silver Resource

30 g/t Ag Eq Cut	Tonnes (Mt)	Silver Eq. (g/t)	Silver (g/t)	Zinc (%)	Lead (%)	Million Ounces Silver	Million Ounces Silver Eq.
Measured	76	72	45	0.37	0.25	111	175
Indicated	29	59	31	0.38	0.25	29	55
Measured & Indicated	105	68	41	0.37	0.25	140	230
Inferred	23	60	31	0.40	0.28	23	45
Total	128	67	40	0.38	0.26	163	275

The Bowdens Mineral Resource Estimate has been compiled by H&S Consultants Pty Ltd using Multiple Indicator Kriging and the reporting is compliant with the 2012 JORC Code and Guidelines. For full disclosures refer to the Silver Mines Limited announcement of 19 September 2017.

1. Bowdens' silver equivalent: $\text{Ag Eq (g/t)} = \text{Ag (g/t)} + 33.48 * \text{Pb (\%)} + 49.61 * \text{Zn (\%)}$ calculated from prices of US\$20/oz silver, US\$1.50/lb zinc, US\$1.00/lb lead and metallurgical recoveries of 85% silver, 82% zinc and 83% lead estimated from test work commissioned by Silver Mines Limited.
2. Bowdens Silver Mineral Resource Estimate is reported to a 30g/t Ag Eq cut off and extends from surface and is trimmed to 300 metres RL which is approximately 320 metres below surface representing a potential volume for open-pit optimisation models.
3. In the Company's opinion, the silver, zinc and lead included in the metal equivalent calculations have a reasonable potential to be recovered and sold.
4. Variability of summation may occur due to rounding.

Appendix 3 - Bowdens Silver Resource

Cut off g/t Ag Eq	Tonnes (Mt)	Silver Eq. (g/t)	Silver (g/t)	Zinc (%)	Lead (%)	Million Ounces Silver	Million Ounces Silver Eq.
0	397.2	30.7	17.6	0.18	0.12	225	392
10	261.7	43.7	25.2	0.26	0.17	212	368
20	185.2	54.6	31.7	0.32	0.21	189	325
30	127.9	66.8	39.6	0.38	0.26	163	275
40	89.2	79.7	48.6	0.43	0.29	139	229
50	63.6	92.8	58.4	0.47	0.33	119	190
60	46.1	106.3	69.1	0.51	0.36	102	158
70	33.7	120.8	80.9	0.54	0.39	87	131
80	25.1	135.5	93.4	0.57	0.42	75	109
90	19.2	149.9	105.6	0.59	0.45	65	93
100	15.1	163.7	117.5	0.62	0.47	57	80
120	9.6	192.3	141.4	0.67	0.53	44	59

Appendix 4 – Board of Directors

Keith Perrett, Chairman

Mr Perrett has had a long involvement in agriculture as a producer and industry leader at local, state, national and international levels. He was formerly Chairman of the Grains Research and Development Corporation (GRDC), the National Rural Advisory Council (NRAC), the Wheat Research Foundation, and President of the Grains Council of Australia.

Anthony McClure, Managing Director

Mr McClure graduated with a Bachelor of Science (Geology) degree from Macquarie University in 1986. He has had 30 years technical, management and financial experience in the resource sector worldwide in project management and executive development roles. He has also worked in the financial services sector within the mineral and energy sectors.

Mr McClure is currently a director of unlisted public company Mekong Minerals Limited (since October 2010) and listed company Planet Gas Limited (since August 2003) and. He is also a past director of Bolnisi Gold NL and European Gas Limited.

Peter Langworthy, Non-Executive Director

Mr Langworthy graduated with a Bachelor of Science (Geology) degree (Hons) from Macquarie University in 1986. His career spans 30 years in mineral exploration and project development both in Australia and internationally. His industry experience includes senior management roles with WMC Resources Limited, PacMin Mining Limited, and Jubilee Mines NL. Mr Langworthy led the management team that was responsible for numerous discoveries that led to the outstanding success of Jubilee Mines.

Mr Langworthy is currently Chairman of Syndicated Metals Limited (since March 2012) and Technical Director at Capricorn Metals Limited (since July 2013.) Mr Langworthy previously held non-executive directorships with Northern Star Resources Limited, Talisman Mining Limited, Falcon Minerals Limited and Pioneer Resources Limited.

Jonathan (Jo) Battershill, Non Executive Director

Mr Battershill graduated with a Bachelor of Engineering (Geology) degree (Hons) from the Camborne School of Mines, United Kingdom in 1995. His career spans over 20 years in mining, business development and finance both in Australia and internationally. His industry experience includes senior operational and business development roles with WMC Resources Limited as well as significant stockbroking experience at Hartleys, Citigroup and UBS both in Sydney and London. Mr Battershill was consistently voted one of the leading mining analysts in Australia between 2009 and 2015 by institutional investors.

Until recently, Mr Battershill was the Global Mining Strategist (Executive Director) with the UBS investment bank in London and is currently the Principal of JJB Advisory Limited, a private advisory and consulting firm based in the UK.

Competent Persons Statements

Bowdens Silver Resource Estimation

The information in this report that relates to mineral resources is based on work compiled by Mr Arnold van der Heyden who is a Director of H & S Consultants Pty Ltd. Mr van der Heyden is a member and Chartered Professional (Geology) of the Australian Institute of Mining and Metallurgy and has sufficient experience that is relevant to the style of mineralisation and type of deposit under consideration, and to the activity being undertaken, to qualify as a Competent Person as defined in the 2012 edition of the 'Australasian Code for Reporting of Exploration Results, Mineral Resources and Ore Reserves' (JORC code). Mr van der Heyden consents to the inclusion in this report of the matters based on the information in the form and context in which it appears.

Bowdens Silver Exploration and Drill Results

The information in this report that relates to the Bowdens Silver drill hole intercepts and exploration in the Bowdens Silver area is based on information compiled by Scott Munro an employee of Bowdens Silver and a member of Australian Institute of Geoscientists (AIG) and Darren Holden an employee of GeoSpy Pty Ltd and a member of the Australasian Institute of Mining and Metallurgy (MAusIMM). Mr Munro and Mr Holden have sufficient experience that is relevant to the style of mineralisation and type of deposit under consideration to the activity that he is undertaking to qualify as a Competent Person as defined in the 2012 edition of the 'Australasian Code for Reporting Exploration Results, Mineral Resources and Ore Reserves' (JORC code). Mr Munro and Mr Holden consent to the inclusion in this report of the matters based on this information in the form and context in which it appears.