



Real Energy Corporation Limited  
Level 3, 32 Walker Street North Sydney NSW 2060  
Telephone 02 9955 4008

## Tamarama-3 Update

### ➤ More Gas shows in the Patchawarra Formation

**Sydney, 21 May 2018:** Cooper Basin focused oil & gas exploration company Real Energy Corporation Limited (ASX: RLE) ("Real Energy") is pleased to provide an update on the drilling of Tamarama-3.

Since the last report, the well was drilled from 2,488 metres MDRT (measured depth below rotary table) to the total depth of 2,634 metres MDRT.



**Ensign rig 964 on location**

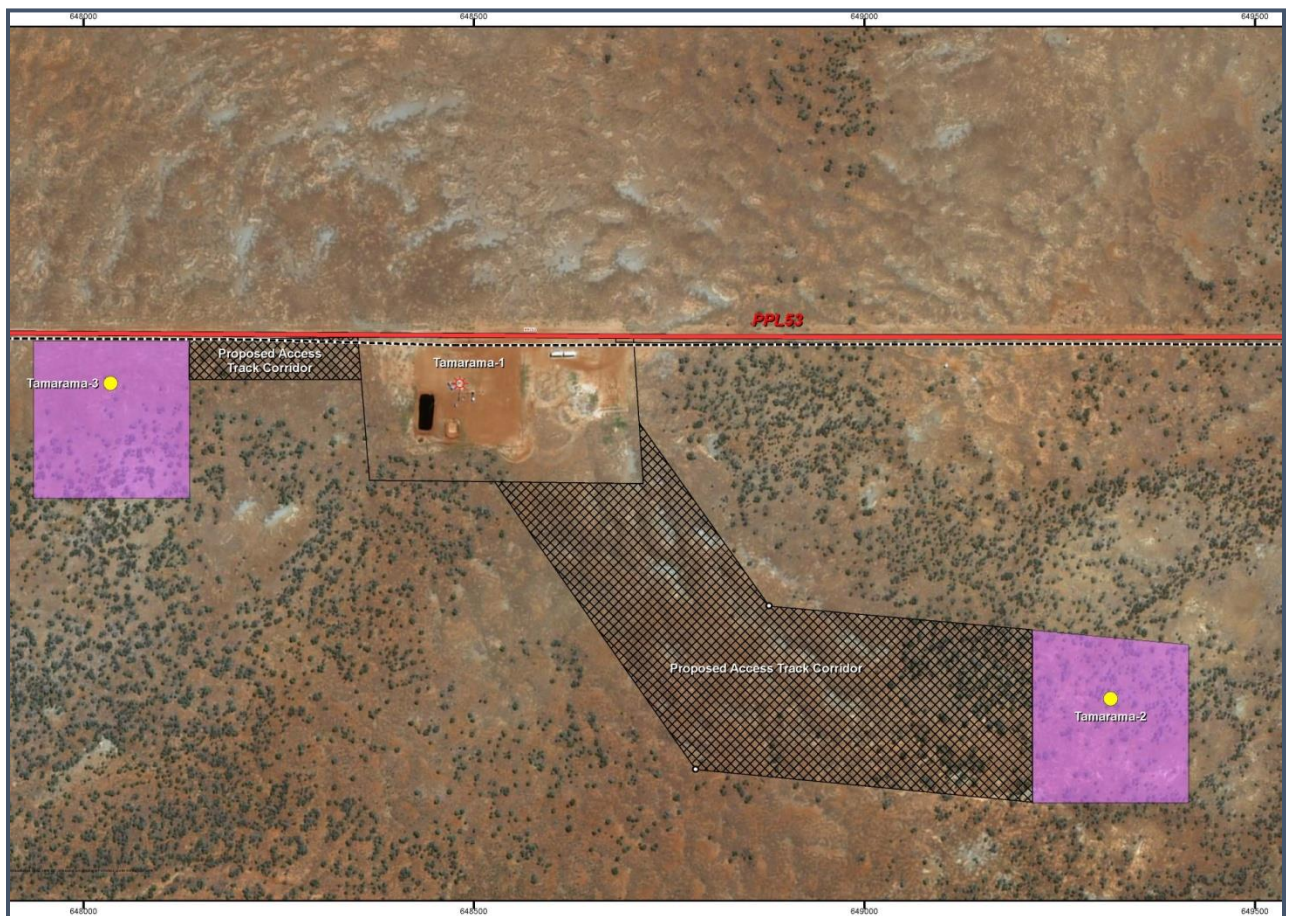
As previously reported, elevated gas readings were recorded over the Nappamerri Formation, the Toolachee Formation and upper Patchawarra Formation. Highly elevated gas readings have continued

through the Patchawarra Formation to the top of the basement at approximately 2,573 metres MDRT. Additional intervals in the Patchawarra Formation with notably high gas readings are:

- 2510–2520 metres MDRT: SANDSTONE with gas peak of 157.1 units over the background gas of 33.4 units;
- 2520-2529 metres MDRT: SANDSTONE with minor streaks interbedded SILTSTONE and COAL with gas peak of 164.2 units over the background gas of 19.3 units;
- 2540-2573 metres MDRT: SANDSTONE with minor streaks of SILTSTONE with gas peak of 136.4 units over the background gas of 19.4 units.

The significance of the gas shows in Tamarama-3 will be further evaluated by electric logs being undertaken as at 6 am EST today.

Managing Director of Real Energy Mr Scott Brown commented “The gas shows we are seeing in the Patchawarra continue the good results we have received so far for Tamarama-3. We have now completed drilling the well and are currently running electric logs to evaluate the significance of the gas shows seen in the well. ”



The surface location of Tamarama-1, Tamarama-2 and Tamarama-3

Tamarama-3 well is second well of Real Energy's two-well gas appraisal program designed to prove commercial gas flow. If the wells are successful, Real Energy will look to establish pilot production out of the

wells and look to connect flow lines so that sales gas can then be supplied into Australia's East Coast gas market.

Real Energy: Managing Director - Scott Brown +61 2 9955 4008.

Released through: Ben Jarvis, Six Degrees Investor Relations, +61 (0) 413 150 448

Or visit the website: [www.realenergy.com.au](http://www.realenergy.com.au)

Twitter: <https://twitter.com/RealEnergyCor>

### **Geological Information**

*The geological information in this announcement relating to geological information and resources is based on information compiled by Mr Lan Nguyen, who is a Member of Petroleum Exploration Society of Australia, the American Association of Petroleum Geologist, and the Society of the Petroleum Engineers and has sufficient experience to qualify as a Competent Person. Mr Nguyen consents to the inclusion of the matters based on his information in the form and context in which they appear. The information related to the results of drilled petroleum wells has been sourced from the publicly available well completion reports.*

### **About Real Energy Corporation**

Real Energy is an oil and gas exploration and development company with a focus on the Cooper Basin, Australia's most prolific onshore producing petroleum basin. Real Energy has 100% ownership in 2 large permits in Queensland –ATP 927P & ATP1194PA.

Real Energy is focusing initially on the Toolachee and Patchawarra formations. These formations are well-known throughout the basin for holding and producing gas. Seismic interpretation in conjunction with existing petroleum well data has determined that the Toolachee and Patchawarra formations are significant across much of our acreage.