



**GATEWAY  
MINING LTD**  
ASX: GML

- Consolidation of well-endowed Gidgee gold tenure in WA
- Never exposed to modern exploration techniques
- Targeting further shallow oxide discoveries and barely-tested potential at depth



**Creating value from advanced gold exploration in WA**

**Resources Rising Stars**  
Peter Langworthy – 29-30 May 2018



## Forward Looking Statements

- This presentation has been prepared by Gateway Mining Ltd (GML). The information contained in this presentation is a professional opinion only and is given in good faith. Certain information in this document has been derived from third parties and through Gateway Mining has no reason to believe that it is not accurate, reliable or complete, it has not been independently audited or verified by GML.
- This presentation is in summary form and does not purport to be all inclusive or complete. Recipients should conduct their own investigations and perform their own analysis in order to satisfy themselves as to the accuracy and the completeness of the information, statements and opinions contained.
- This is for information purposes only. Neither this nor the information contained in it constitutes an offer, invitation, solicitation or recommendation in relation to the purchase or sale of GML shares in any jurisdiction. This does not constitute investment advice and has been prepared without taking into account the recipient's investment objectives, financial circumstances or particular needs and the opinions and recommendations in this presentation are not intended to represent recommendations of particular investments to particular persons. Recipients should seek professional advice when deciding if an investment is appropriate. All securities transactions involve risks, which include (among others) the risk of adverse or unanticipated market, financial or political developments.
- To the fullest extent permitted by law, GML, its officers, employees, related bodies corporate, agents and advisors do not make any representations or warranty, express or implied, as to the currency, accuracy, reliability or completeness of any information, statements, opinions, estimated, forecasts or other representations contained in this presentation. No responsibility for any errors or omissions from this arising out of negligence or otherwise is accepted.
- Any forward looking statements included in this document involve subjective judgment and analysis and are subject to uncertainties, risks and contingencies, many of which are outside the control of, and may be unknown to, GML. In particular, they speak only as of the date of this document, they assume the success of GML's strategies, and they are subject to significant regulatory business, competitive and economic uncertainties and risks. Actual events may vary materially from the forward-looking statements and the assumptions on which the forward-looking statements are based. Recipients of this document are cautioned to not place undue reliance on such forward-looking statements.

# Important Notice and Disclaimer



## Competent Person Statement

- The information in this report that relates to Exploration Results or Mineral Resources is based on information compiled or reviewed by Mr Peter Langworthy who is a consultant to Gateway Mining Ltd and is a current Member of the Australian Institute of Mining and Metallurgy. Mr Peter Langworthy has sufficient experience, which is relevant to the style of mineralisation and types of deposit under consideration and to the activities undertaken, to qualify as a Competent Person as defined in the 2012 Edition of the “Australasian Code of Reporting of Exploration Results, Mineral Resources and Ore Reserves”. Mr Langworthy consents to the inclusion in the report of the matters based on the information in the form and context in which it appears.





## Strong shareholder support, aligned to Company's objectives

### BOARD OF DIRECTORS

**Trent Franklin – Non-Exec Chairman**

Experienced Corporate Advisor holding qualifications in Finance, Financial Planning and Insurance Broking. Trent also holds a BSc Degree (Geology/Geophysics) from the University of Sydney.

**Peter Langworthy – Managing Director**

Experienced explorer and project developer including senior management roles with Jubilee Mines NL, WMC Resources Limited, Capricorn Metals Ltd and PacMin Mining Ltd. Peter led the exploration team that was responsible for numerous discoveries that supported the outstanding success of Jubilee Mines.

**Debbie Fullarton – Non Exec Director**

Experienced Chartered Accountant with 25 years experience in senior roles including Executive Director, Chief Financial Officer and Financial Manager at Auris Minerals Ltd., DeBeers and Deloittes. Debbie holds a Bachelor Degree – Accounting (Hons) from the University of South Africa and has been a Chartered Accountant in Australia since 2005.

**Scott Brown - Non Exec Director**

A Company Director with 25 years experience in Project Management, Business Development and Logistics across the commercial construction, security-risk management and resource sectors both in Australia and internationally.

**Kar Chua – Company Secretary**

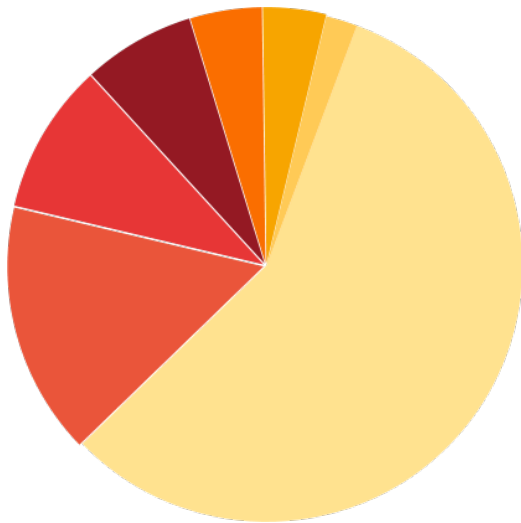
Chartered Accountant with extensive experience in company secretarial & finance roles and is currently CoSec and Financial Controller at Futura Resources Ltd. & ASX listed Raven Energy Ltd. Kar holds a Bachelor Degree in Accounting & Corporate Finance from the University of Adelaide.





## CAPITAL STRUCTURE

ASX Ticker	GML
Shares on Issue	836,845,924
Options attached to Entitlements Issue (3c)	63,684,593
Employee Options	20,000,000
Cash @ March 31, 2018	\$3,000,000
Share Price	\$0.025 (2.5 cents)
Market Capitalisation	\$20.5m



## Major Shareholders

- OMNI GeoX - 15.93%
- Harmanis Holdings - 9.49%
- L11 Capital - 7.07%
- Directors - 4.52%
- Crest Investment Group - 3.98%
- ACN 112 940 057 PTY LTD - 1.99%
- Other - 57.02%



# Gidgee Gold Project – Our Cornerstone Asset



- Large-scale gold system in a well-endowed gold region
- Known shallow oxide mineralization:
  - *150,000oz mined from shallow pits in the 1980s but no deep drilling*
- Virtually untested by modern exploration techniques or technology:
  - *Previous owners were successful despite barely scratching the surface*
- Targeting high-grade gold in major shear systems on the margin of the granitoid intrusion
- Associated granite-hosted sheeted veins and stockwork mineralization
- Volcanic Hosted Massive Sulphide (VHMS) deposit potential

**Gateway's strategy is in line with the highly successful approach implemented at many well-known but under-explored WA gold projects**



# Gidgee – A High-Quality Address



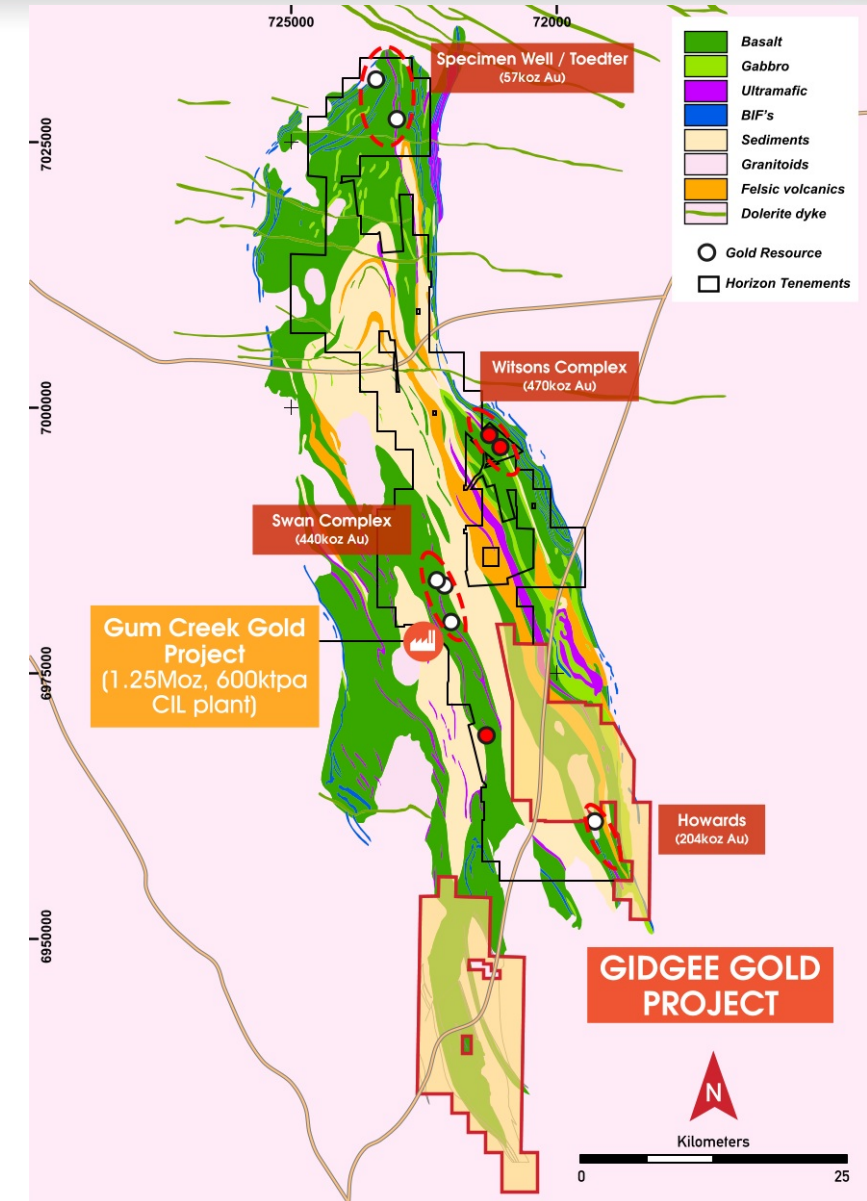
- Consolidated ground-holding of 600km<sup>2</sup>
- Well-developed infrastructure throughout the region
- Minimal systematic exploration historically
- Large areas remain un-explored beneath transported cover
- Modern approach with modern thinking!



# Gidgee – Under-explored World-Class Goldfield



- Gidgee Project comprises a core position over the highly endowed Gum Creek Archaean Greenstone Belt (~2Moz)
- Located immediately adjacent to Horizon Gold's Gum Creek Gold Project (ASX: HRN):
  - 17.3Mt at 2.25g/t Au for 1.25Moz<sup>1</sup>
  - ~60% free-milling
  - Swan Bitter, Wilsons, Swift, Kingfisher, Howards
- Consolidated tenure
- Core of granted Mining Leases

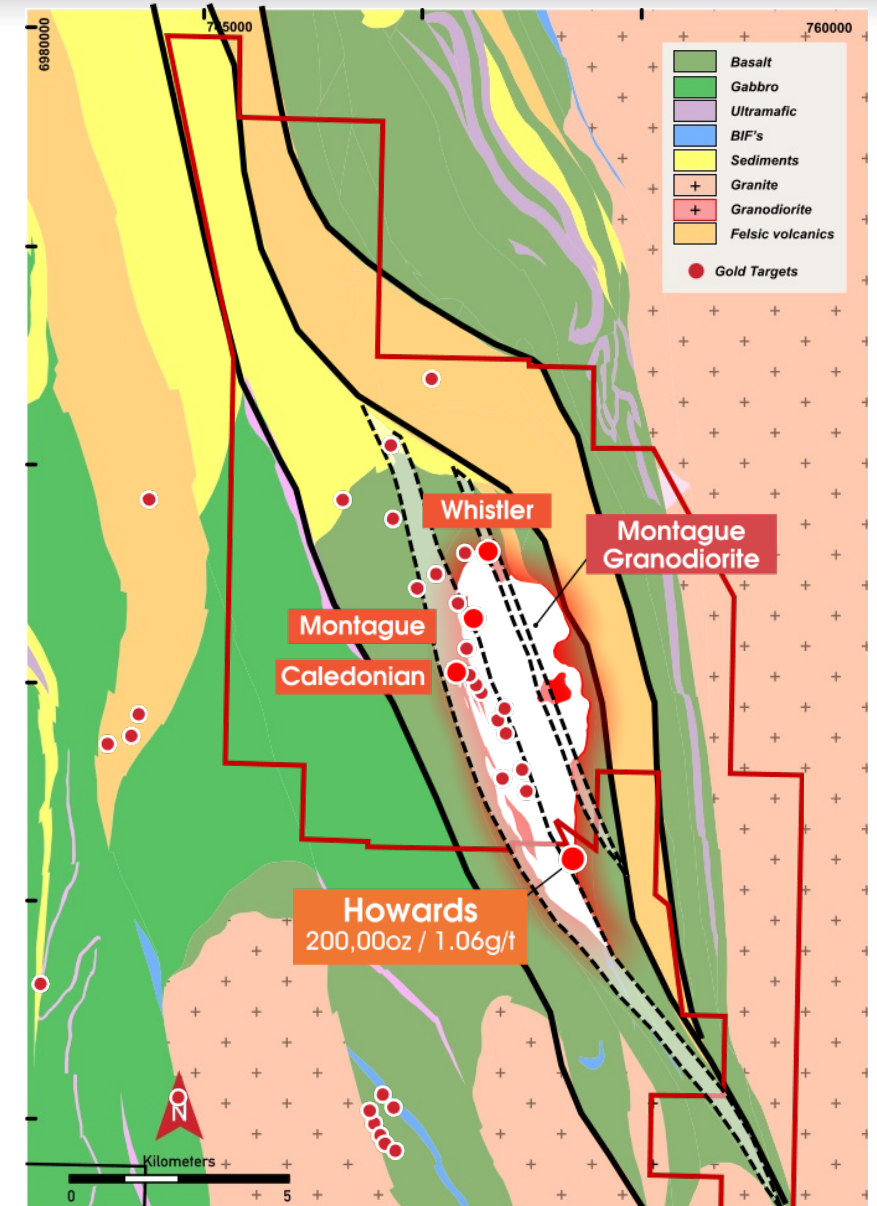


<sup>1</sup> Refer to HRN ASX Release dated 29 September 2018 titled "Mineral Resources as at 30 June 2017"

# Gidgee Gold Project – Regional Setting and Location



- Prospective geological setting to host a large-scale gold system
  - *Favourable structural setting*
  - *Strong demonstrated gold endowment*
- Structural controlled gold system on margin of granitoid intrusion is analogous to:
  - *Granny Smith (+2Moz: Gold Fields)*
  - *Tarmoola-King of the Hills (2.3Moz: RED 5)*
- Excellent potential for both additional oxide and high-grade primary mineralisation
  - *150,000oz mined from shallow pits mined in 1980's*
- Presence of high-grade lodes at depth confirmed by limited historical drilling – but never followed up!

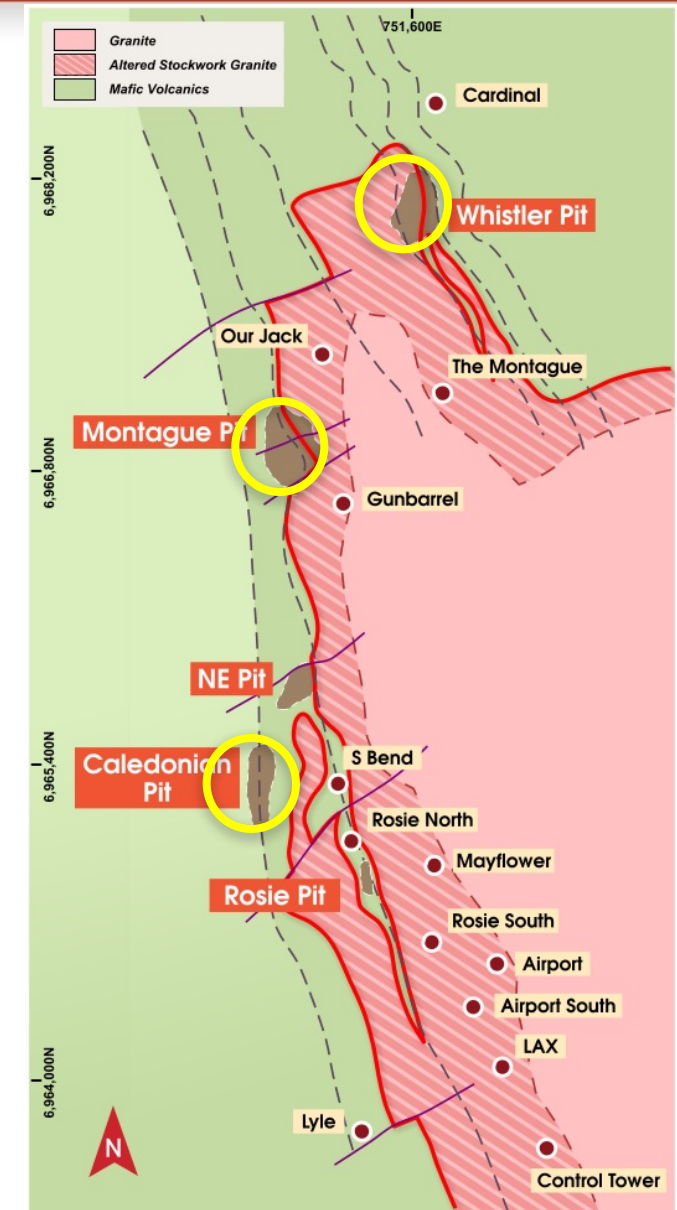


# Gidgee Gold Project – Target Summary



## HIGH PRIORITY DRILLING TARGETS:

- *Whistler Prospect*
- *Montague Prospect*
- *Caledonian Prospect*
- Targeting high-grade sheeted veins on sheared margin of granitoid
- Near-surface oxide and large-scale primary gold mineralisation
- Minimal previous systematic testing
- Previous exploration weighted towards stockwork mineralisation



# Gidgee Gold Project – Whistler Prospect

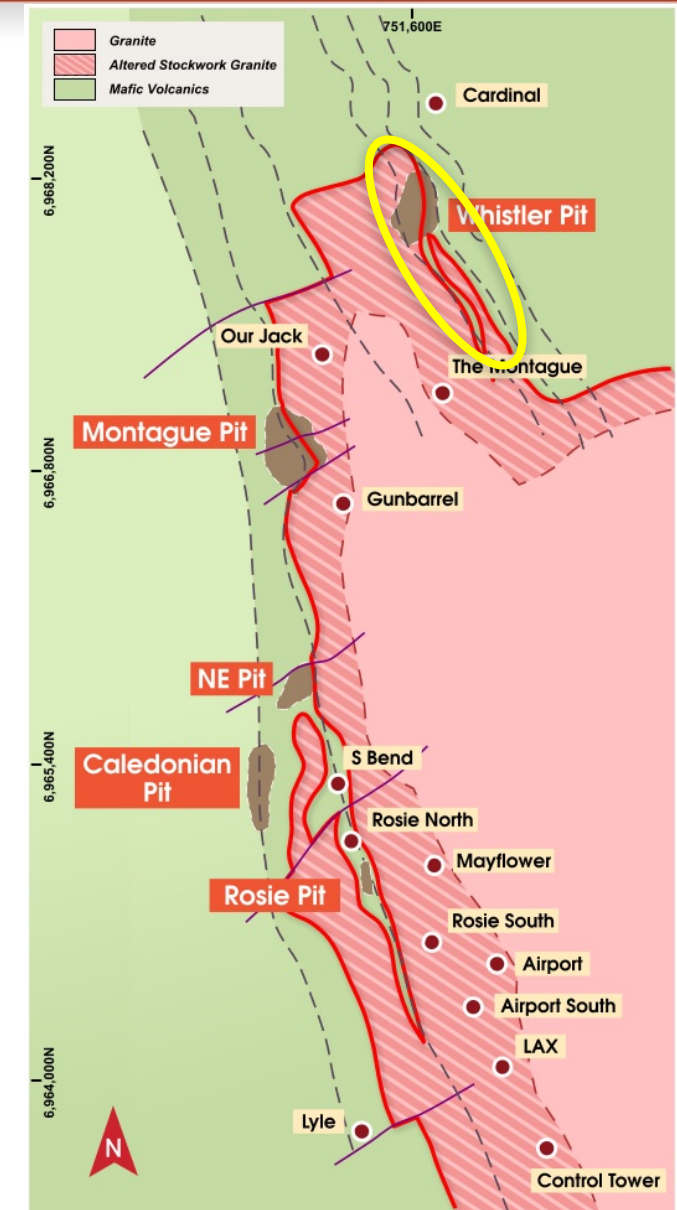


- Priority high-grade target beneath shallow open pit
- Sheeted veins and associated stockwork on granite contact
- Parallel shear zones to be tested in mafic volcanic rocks
- Open in all directions
- Historical drilling results include:

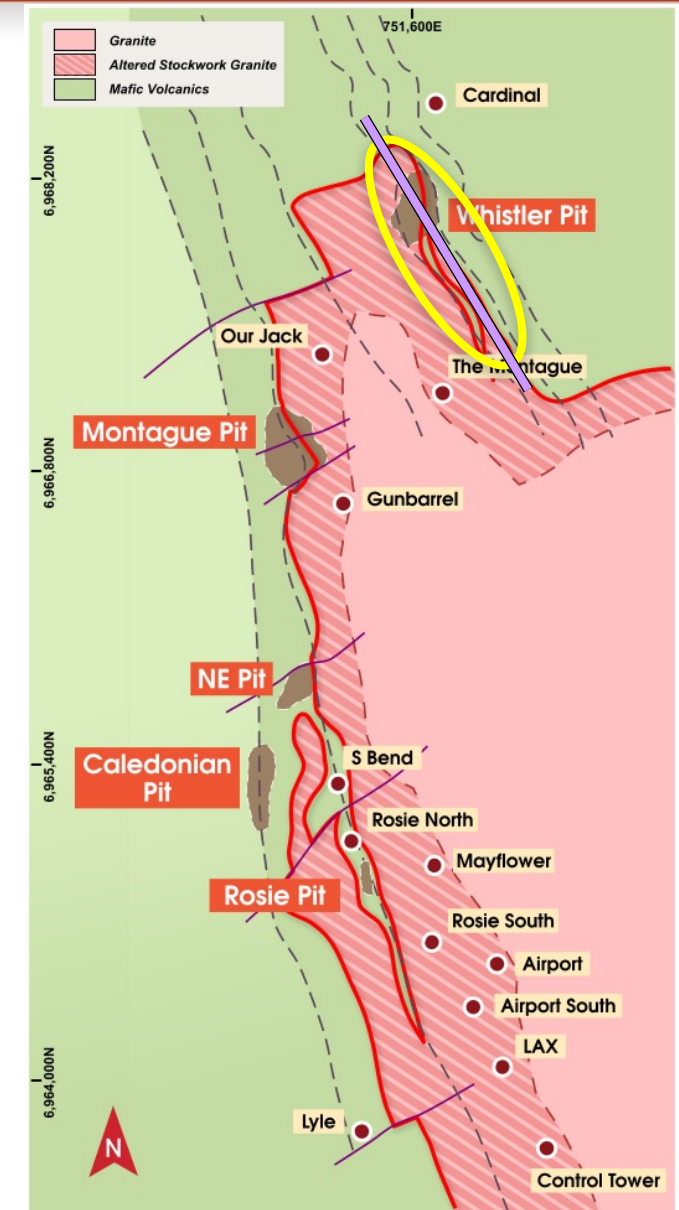
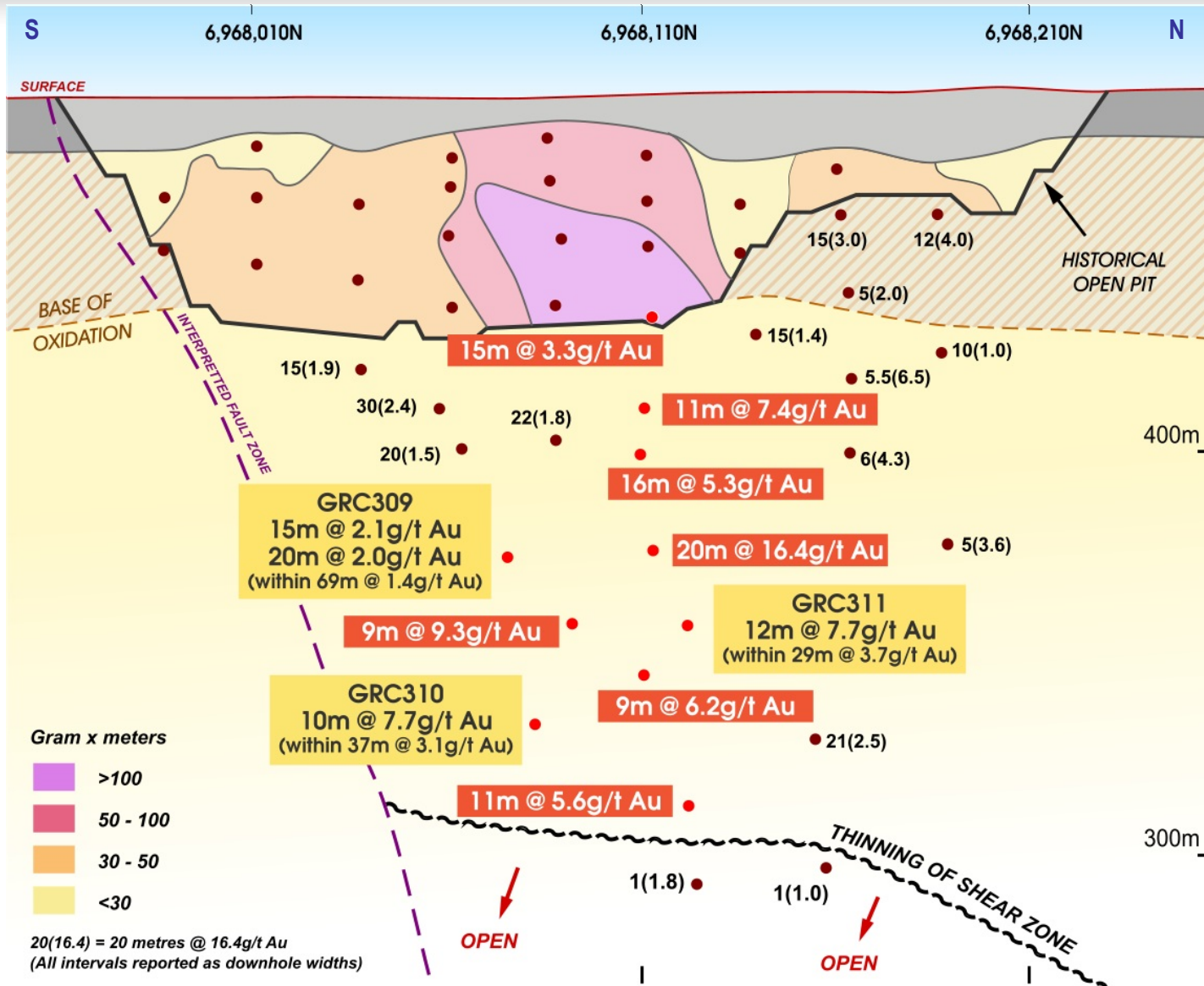
- **Priority focus of initial drilling program**

- 14 RC holes and 1 Diamond hole completed

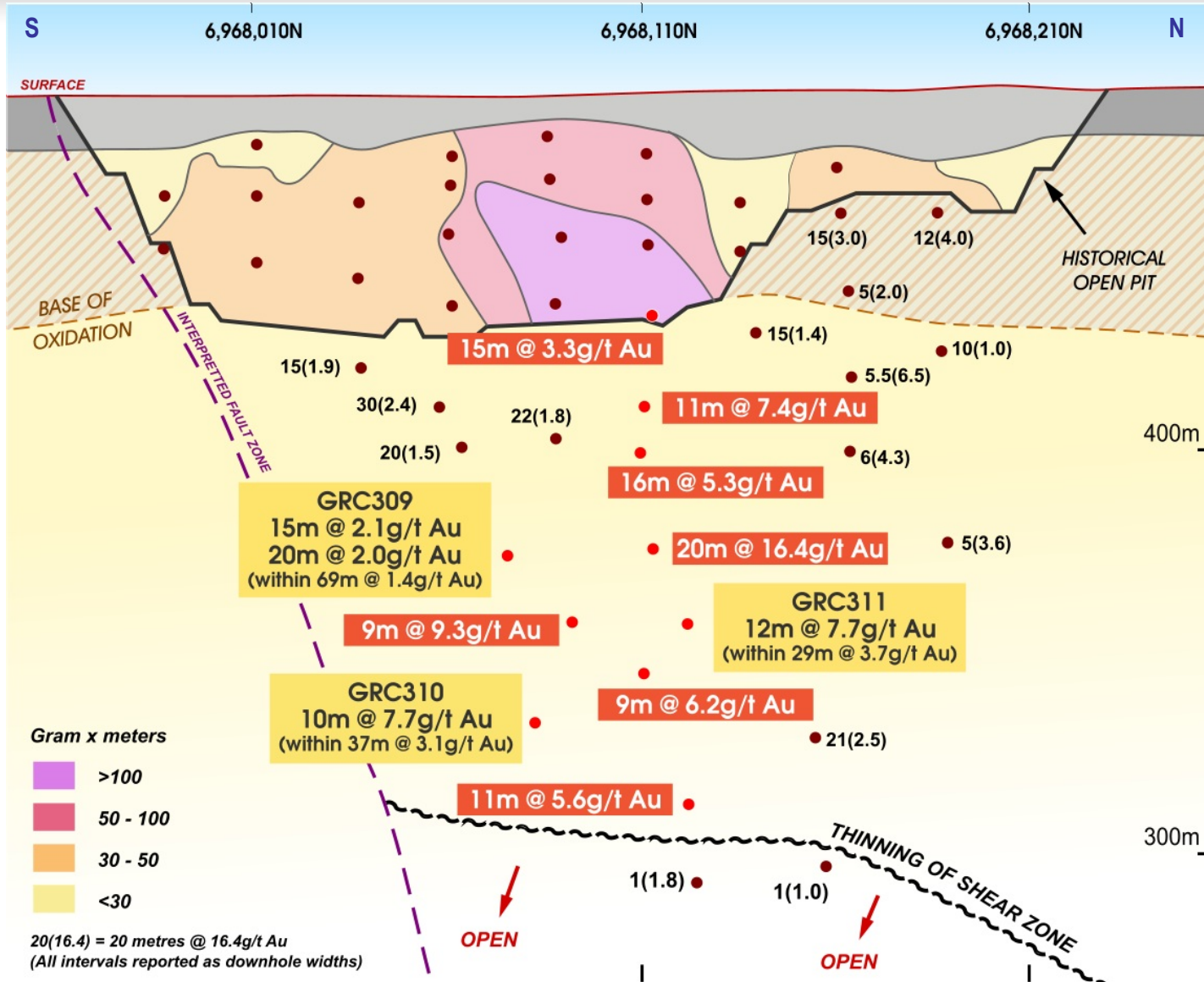
See ASX Announcement dated 30<sup>th</sup> May 2018 for drilling results details



# Whistler – An Emerging Primary High-Grade Gold Discovery?



# Whistler – An Emerging Primary High-Grade Gold Discovery?



## NEW DRILLING RESULTS

- **GRC311 12m @ 7.7g/t Au**  
(within 29m @ 3.7g/t Au)

- **GRC310 10m @ 7.7g/t Au**  
(within 37m @ 3.1g/t Au)

- **GRC309 15m @ 2.1g/t Au & 20m @ 2.0g/t Au**  
(within 68m @ 1.4g/t Au)

## HISTORICAL DRILLING RESULTS

■ 11m @ 7.42g/t Au	■ 9m @ 9.93g/t Au
■ 20m @ 16.4g/t Au	■ 9m @ 6.23g/t Au
■ 11m @ 5.64g/t Au	■ 22m @ 2.21g/t Au
■ 21m @ 2.54g/t Au	■ 30m @ 2.40g/t Au

See ASX Announcement dated 30<sup>th</sup> May 2018 for drilling results details

# Whistler – An Emerging Primary High-Grade Gold Discovery?

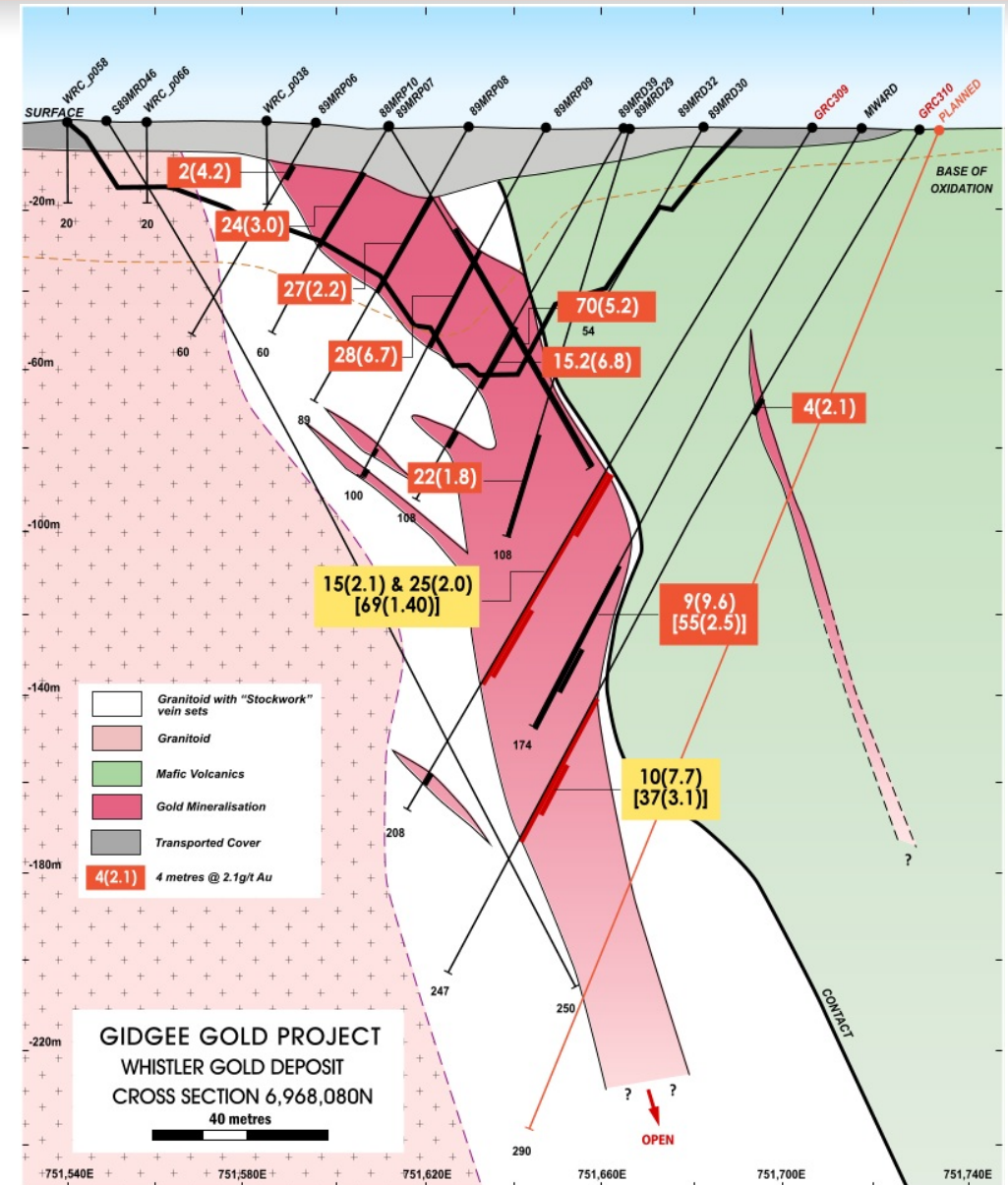


- Thick, coherent zone of gold mineralization
- High-grade central core
- Dip extent tested – results pending
- Primary target on granitoid contact
- Open in all directions

- **GRC311 12m @ 7.7g/t Au**  
(within 29m @ 3.7g/t Au)

- **GRC310 10m @ 7.7g/t Au**  
(within 37m @ 3.1g/t Au)

- **GRC309 15m @ 2.1g/t Au & 20m @ 2.0g/t Au**  
(within 68m @ 1.4g/t Au)



See ASX Announcement dated 30<sup>th</sup> May 2018 for drilling results details

# Whistler – An Emerging Primary High-Grade Gold Discovery?



- Thick, coherent zone of gold mineralization
- High-grade central core
- Dip extent tested – results pending
- Primary target on granitoid contact
- Open in all directions

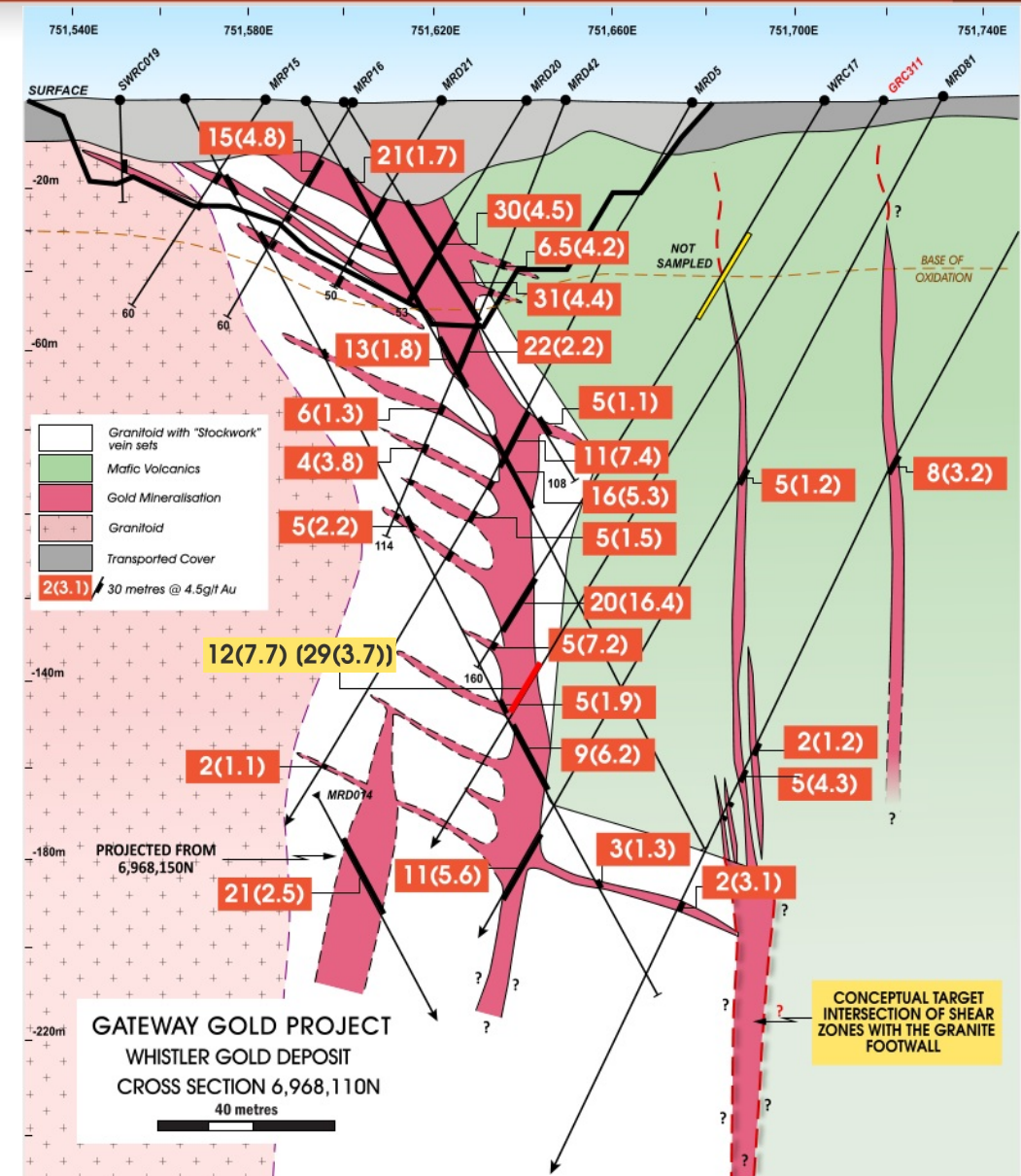
- **GRC311 12m @ 7.7g/t Au**  
(within 29m @ 3.7g/t Au)

- **GRC310 10m @ 7.7g/t Au**  
(within 37m @ 3.1g/t Au)

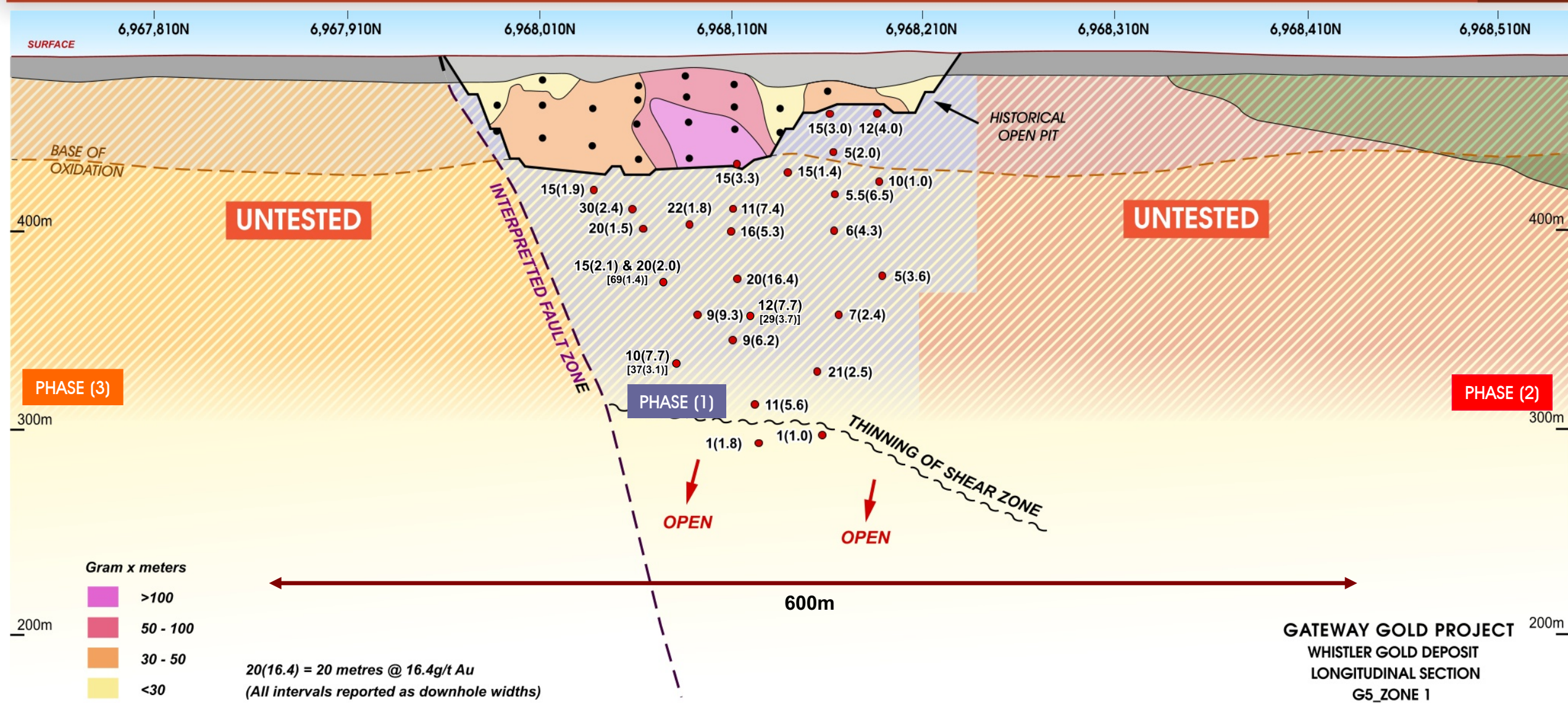
- **GRC309 15m @ 2.1g/t Au & 20m @ 2.0g/t Au**  
(within 68m @ 1.4g/t Au)

- Separate untested, parallel zone intersected in sheared mafic volcanic rocks:

- **MRD014: 5m @ 4.3g/t Au**
- **WRC018: 8m @ 3.2g/t Au**



# Whistler – Priority Focus for Initial Drilling

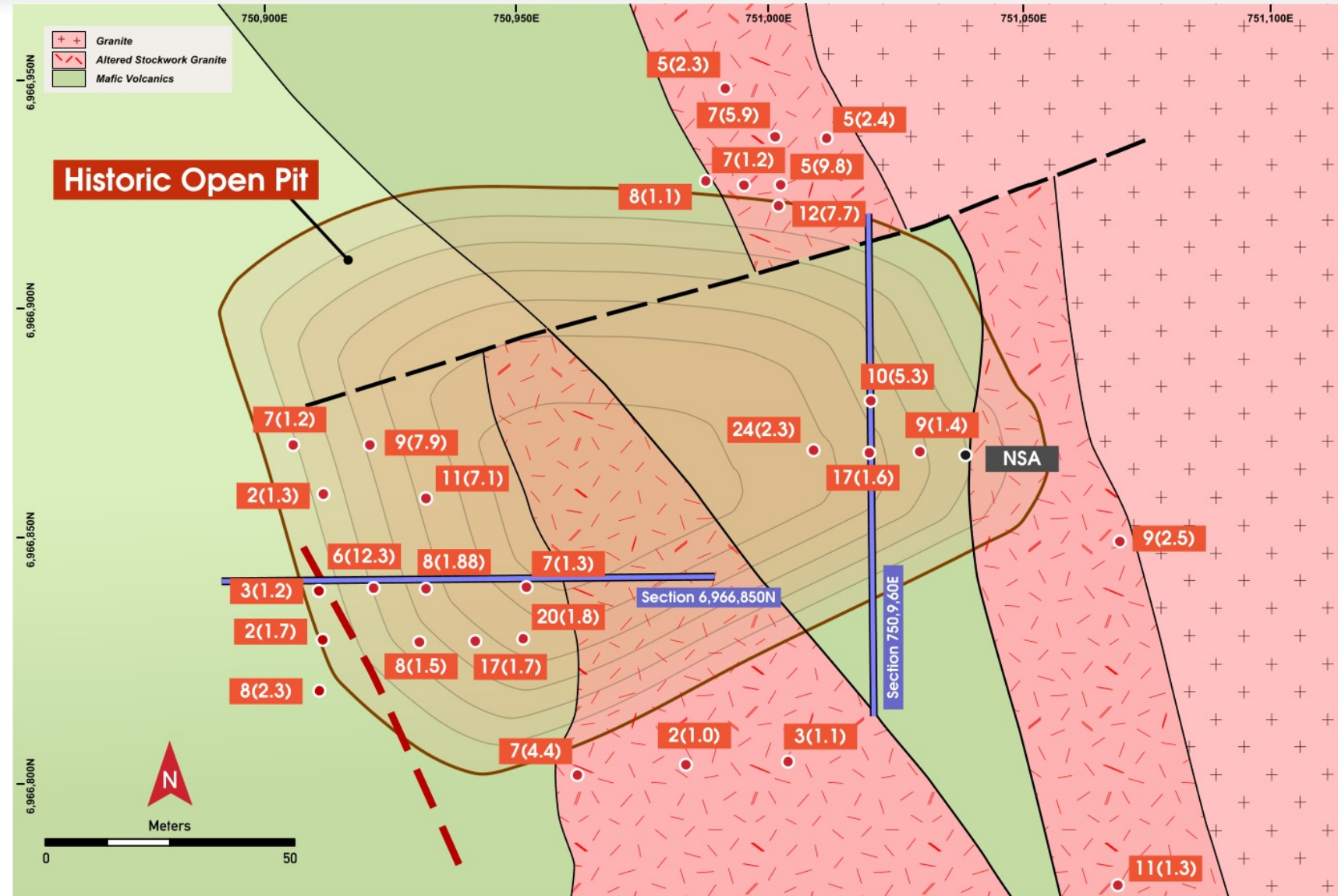


# Gidgee Gold Project – Montague Prospect



- Shallow oxide open cut
- Significant mineralisation:
  - *extending out of bottom of pit*
  - *open down dip and along strike*
- High-grade domains
- Multiple targets
- Open in all directions
- Drilling results include:

■ 6m @ 12.6g/t Au	■ 20m @ 1.8g/t Au
■ 9m @ 7.9g/t Au	■ 11m @ 7.1g/t Au
■ 17m @ 1.7g/t Au	■ 10m @ 5.28g/t Au
■ 17m @ 1.59g/t Au	■ 24m @ 2.5g/t Au
■ 12m @ 7.7g/t Au	■ 5m @ 9.8g/t Au

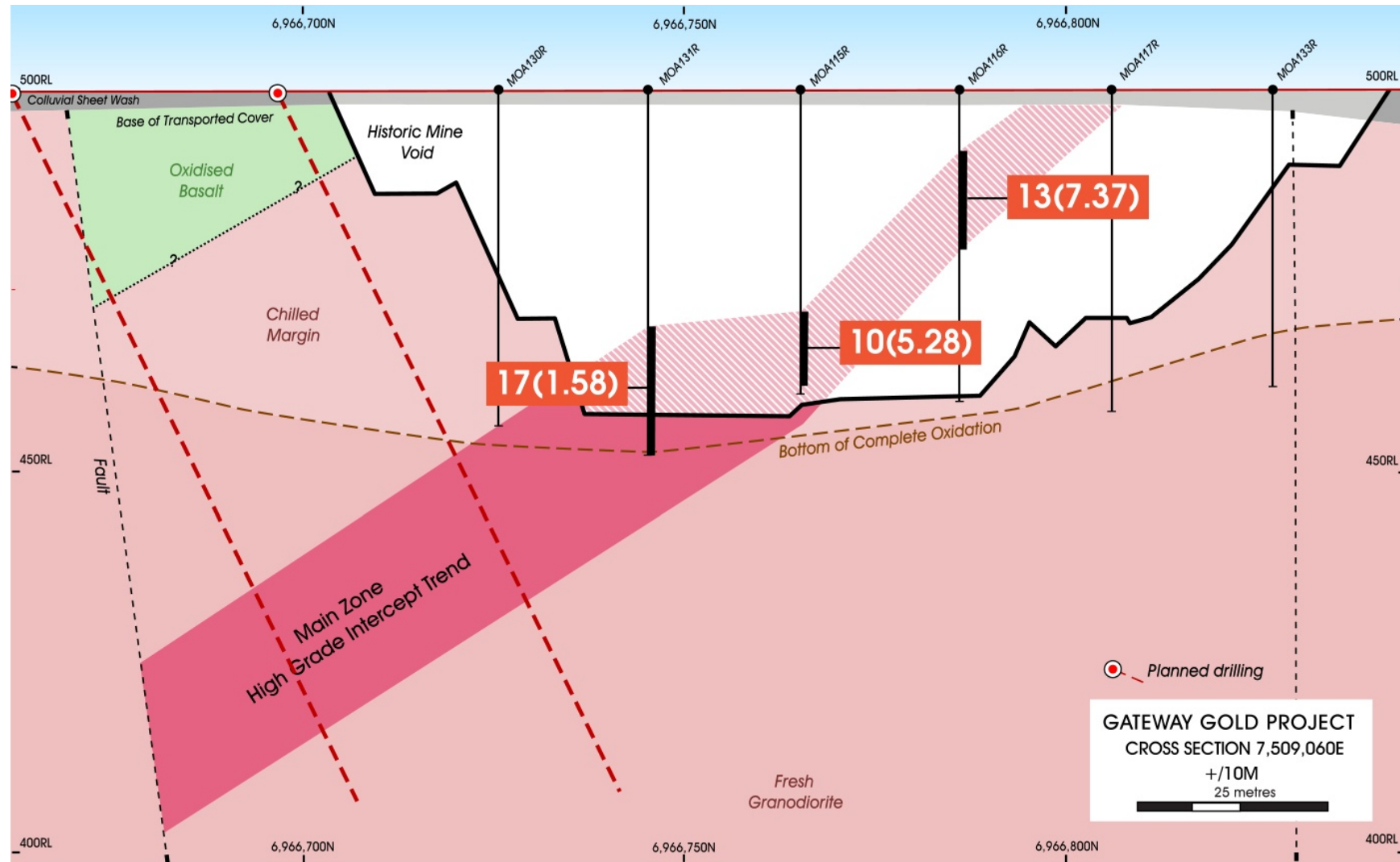


# Gidgee Gold Project – Montague Prospect



- Shallow oxide open cut
- Significant mineralisation:
  - *extending out of bottom of pit*
  - *open down dip and along strike*
- High-grade domains
- Multiple targets
- Open in all directions
- Drilling results include:

■ 6m @ 12.6g/t Au	■ 20m @ 1.8g/t Au
■ 9m @ 7.9g/t Au	■ 11m @ 7.1g/t Au
■ 17m @ 1.7g/t Au	■ 10m @ 5.28g/t Au
■ 17m @ 1.59g/t Au	■ 24m @ 2.5g/t Au
■ 12m @ 7.7g/t Au	■ 5m @ 9.8g/t Au

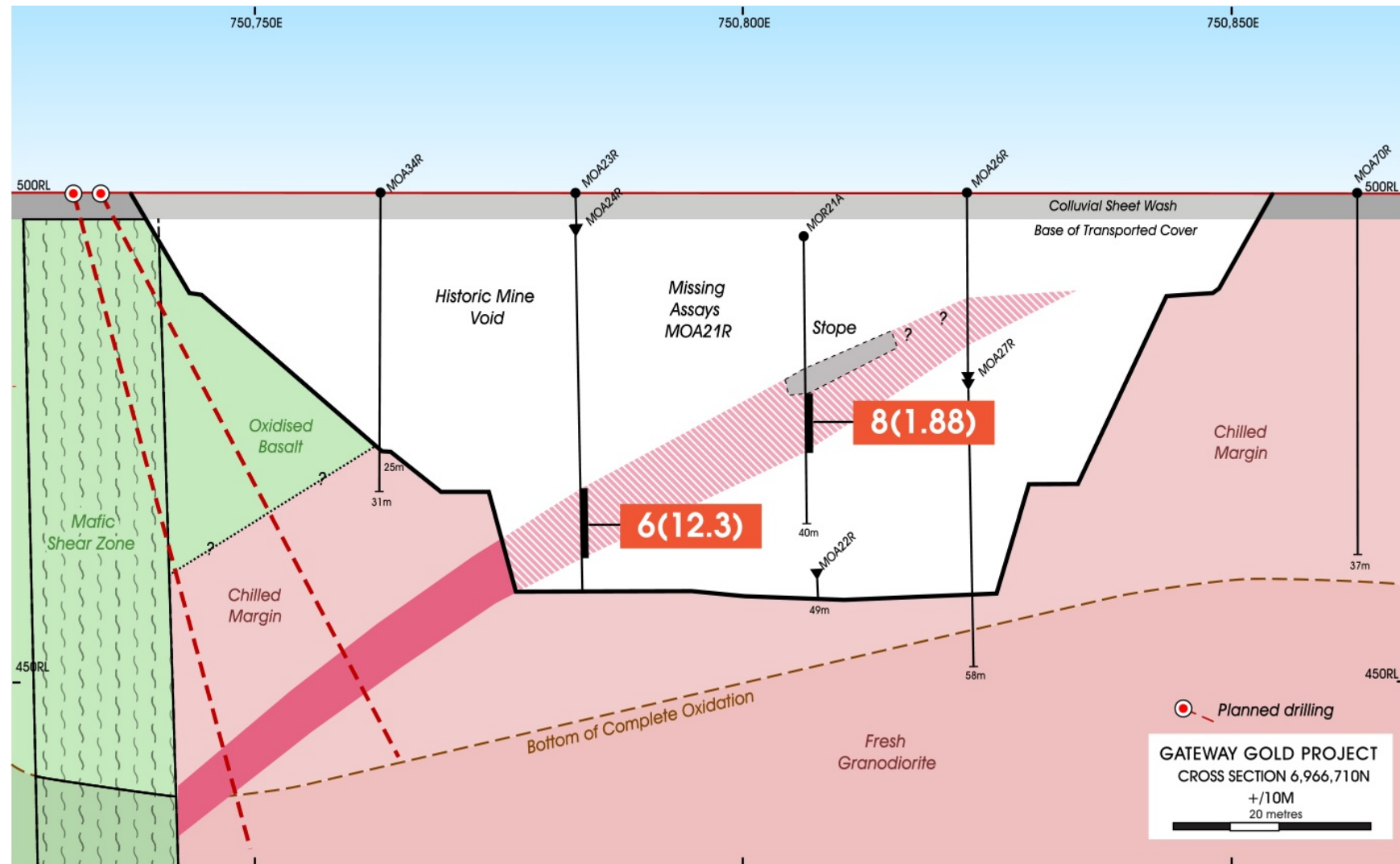


# Gidgee Gold Project – Montague Prospect



- Shallow oxide open cut
- Significant mineralisation:
  - *extending out of bottom of pit*
  - *open down dip and along strike*
- High-grade domains
- Multiple targets
- Open in all directions
- Drilling results include:

■ 6m @ 12.6g/t Au	■ 20m @ 1.8g/t Au
■ 9m @ 7.9g/t Au	■ 11m @ 7.1g/t Au
■ 17m @ 1.7g/t Au	■ 10m @ 5.28g/t Au
■ 17m @ 1.59g/t Au	■ 24m @ 2.5g/t Au
■ 12m @ 7.7g/t Au	■ 5m @ 9.8g/t Au

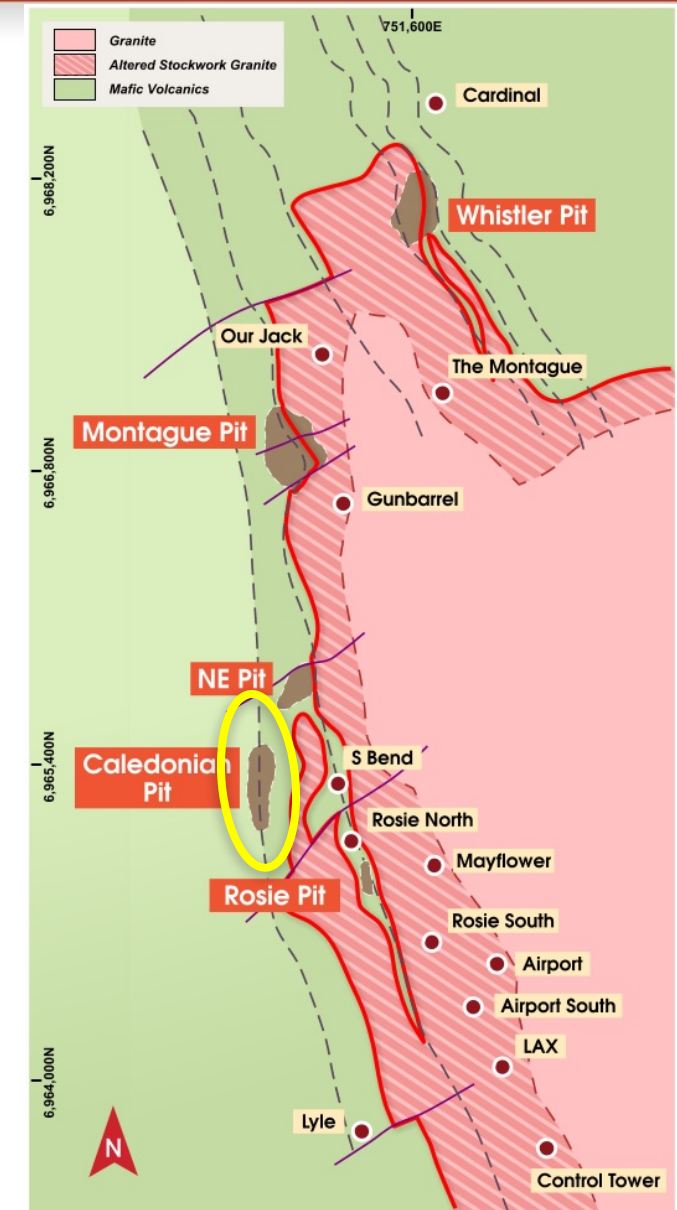


# Gidgee Gold Project – Caledonian Prospect

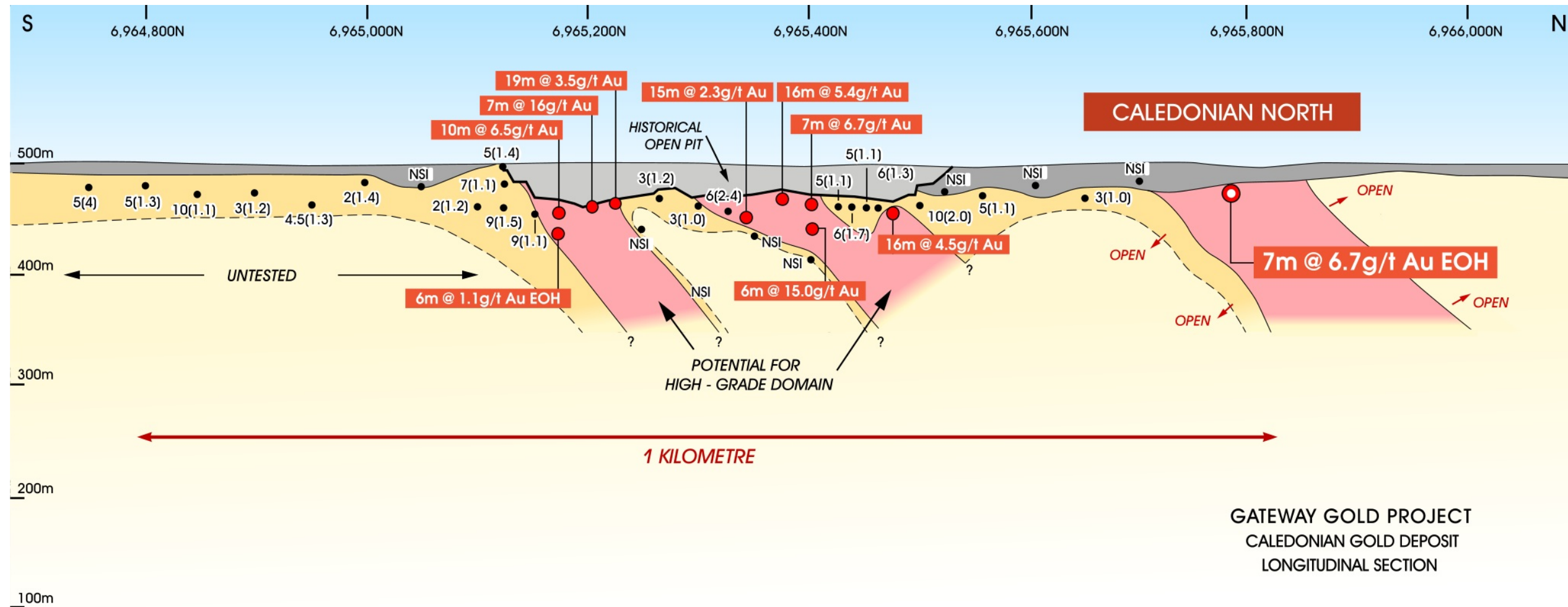


- Shallow oxide open cut (mined)
- Shallow oxide mineralisation drilled over 1km:
  - *High-grade domains*
  - *No testing beneath likely depletion zone in fresh rock*
  - *Open in all directions*
- Historical drilling results include\*:

■ 10m @ 6.5g/t Au	■ 7m @ 16g/t Au
■ 19m @ 3.5g/t Au	■ 16m @ 5.4g/t Au
■ 15m @ 2.3g/t Au	■ 6m @ 15g/t Au
■ 16m @ 4.5g/t Au	■ 10m @ 2.0g/t Au
■ 7m @ 6.7g/t Au	■ 9m @ 1.5g/t Au



# Gidgee Gold Project – Caledonian Prospect



# Gidgee – Aggressive Approach to Exploration



- Targeted programs of RC drilling underway since March 2018:
  - *Whistler – outstanding results from first three RC holes*
  - *Montague*
  - *Caledonian*
- Systematic Aircore drilling of granitoid contact
- Evaluation of stockwork targets
- Evaluation of eastern contact
- Evaluation of VHMS potential
- **Strategy is to:**
  - *Rapidly define the size and quality of the mineralised system*
  - *Commence resource evaluation and definition*



# Proposed Acquisition: Portfolio of Quality Regional Projects



## Bryah Basin Project

- Large, consolidated tenement holding in premier VMS copper-gold province
- Prospective for DeGrussa and Horseshoe Lights style Cu-Au deposits and Fortnum-style gold deposits

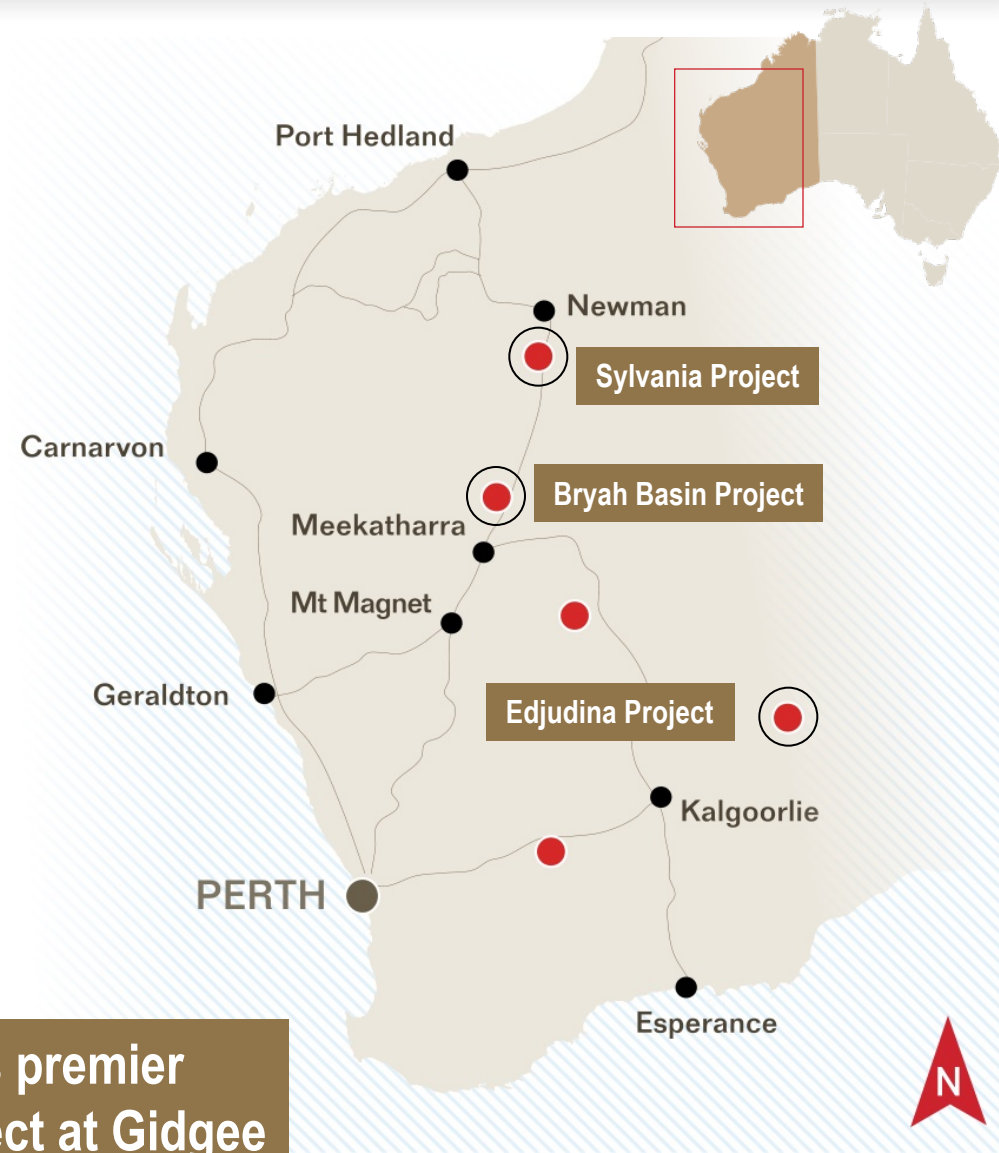
## Sylvania Project

- Exposure to “conglomerate-hosted gold” in the Pilbara

## Edjudina Project

- Exposure to the Laverton Tectonic Zone
- 30km strike of greenstone sequence immediately along strike from a major gold deposit

Gateway is expanding an extensive, quality asset base in WA's premier mineral belts, underpinned by an advanced high quality gold project at Gidjee



# Summary – Key Investment Takeaways



- A new growth opportunity in the WA gold sector following consolidation of the Gidgee gold tenure
- A Tier-1 address for gold exploration, development and mining
- Proven gold endowment as evidenced by historical mining and drilling
- Virtually no modern, systematic exploration – and no drilling at depth
- Prospective geology for large-scale gold system with multi-million ounce potential
- Initial metallurgical tests show the ore is free-milling
- Maiden RC and Diamond drilling campaign completed – news flow volume
- Regional aircore drilling program commencing in mid-June – new flow volume



**Gateway is aiming to systematically build a gold resource base at Gidgee capable of sustaining a mid-tier scale gold business**



**GATEWAY  
MINING LTD**  
ASX: GML

- Consolidation of well-endowed Gidgee gold tenure in WA
- Never exposed to modern exploration techniques
- Targeting further shallow oxide discoveries and barely-tested potential at depth



**Creating value from advanced gold  
exploration in WA**

**Resources Rising Stars**  
Peter Langworthy – 29-30 May 2018