

26 June 2018

Copper to the World 2018 Conference Presentation

Havilah Resources Limited (Havilah) is pleased to release a presentation, entitled *“Copper in the Curnamona Craton, Northeastern South Australia”*, which is to be presented at the [Copper to the World 2018 Conference](#) later today by Dr. Chris Giles, Havilah’s Technical Director.

This presentation highlights the widespread copper mineralisation and high prospectivity of Havilah’s 16,000 km² tenement holding in the Curnamona Craton. This occurs in the Curnamona Copper Belt, which is a 200 km long copper mineralized horizon with strong analogies to the Zambian Copper Belt. It also includes the Mutooroo Cobalt District, where there is widespread lode style copper-cobalt mineralisation that has never been systematically explored using modern technology.

For further information visit www.havilah-resources.com.au

Contact: Mr Walter Richards, CEO, on (08) 8155-4500 or email: info@havilah-resources.com.au



Havilah Resources

A New Mining Force in South Australia

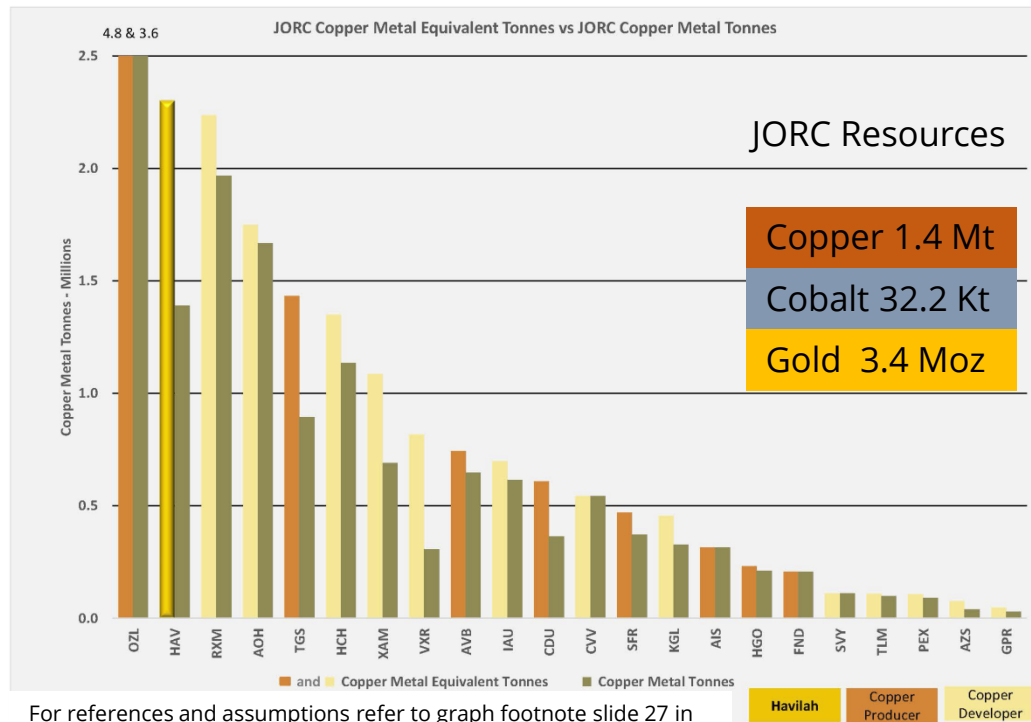


Copper in the Curnamona Craton, Northeastern South Australia
Copper to the World Presentation – Dr Chris Giles, Technical Director

Havilah Has Large Copper Resources.....

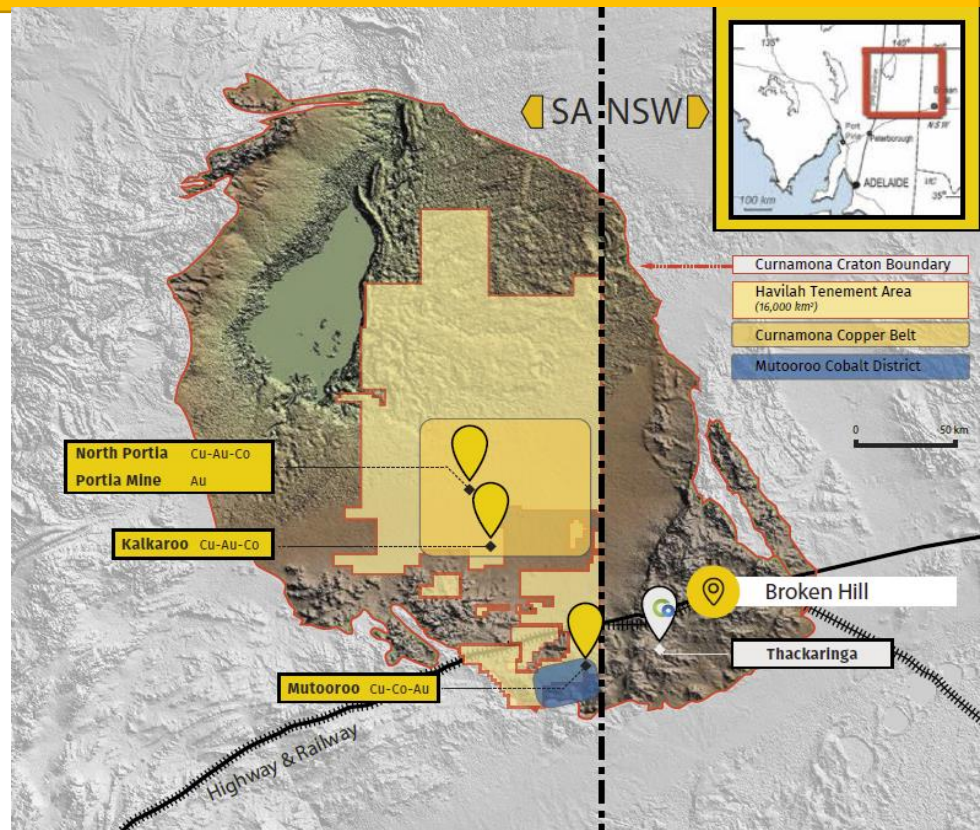
- Largest combined copper-cobalt-gold sulphide resources in Australia.
- Second largest total undeveloped CuEq resources in Australia (after Oz Minerals).
- Kalkaroo is the largest undeveloped open pit copper deposit in Australia on a CuEq basis.
- Large South Australian JORC cobalt resource.
- Every gram of metal was discovered and delineated by Havilah's exploration team.
- 16,000 km² exploration tenement holding in the highly prospective, greatly underrated Curnamona Craton.

IMAGINE THE POSSIBILITIES !



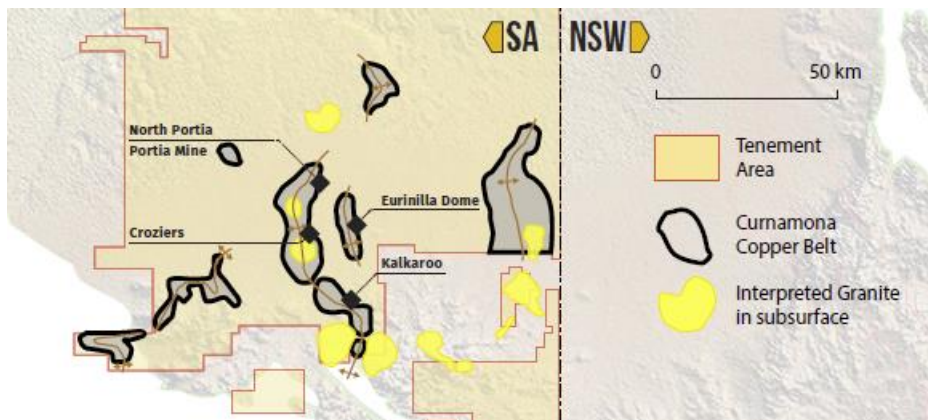
Focused on the Curnamona Craton, NE South Aust.

- Low sovereign risk, safe legal jurisdiction of South Australia.
- Favourable logistics - main highway and transcontinental railway run through the tenement block. Proximity to major regional mining centre of Broken Hill.
- The **Curnamona Copper Belt** is a world class copper-cobalt-gold province, which contains extensive sulphide mineralisation in a similar setting to the Zambian Copper Belt (eg Kalkaroo and North Portia).
- The **Mutooroo Cobalt District** contains widespread lode style cobalt-copper sulphide mineralisation (eg Mutooroo).

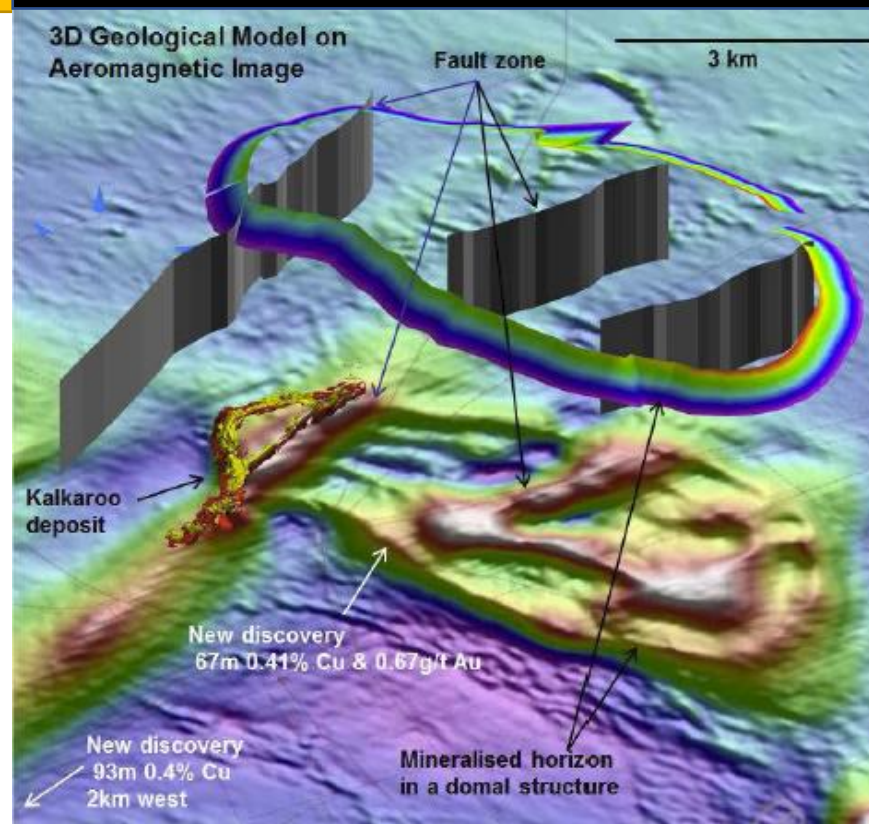


The Curnamona Copper Belt

- The **Curnamona Copper Belt** is a > 200 km long, sparsely drilled, mineralised horizon which hosts the Kalkaroo and North Portia deposits and numerous other prospects.
- Strong geological analogies to the **Zambian Copper Belt**.
- Aeromagnetics clearly identifies the prospective mineralised horizon position with shallow drilling follow up to locate economic mineralisation.



A world class copper-cobalt-gold province in NE South Australia.



Kalkaroo Deposit

- 100 Mt Ore Reserve from independent PFS.
- **Upside:** Substantial Inferred resources, orebody open in all directions, nearby prospects with ore grade intercepts, cobaltian pyrite in tails.
- Ownership of Kalkaroo Station secures land access.
- Example of copper belt replacement style sulphide mineralisation in the Curnamona Craton.

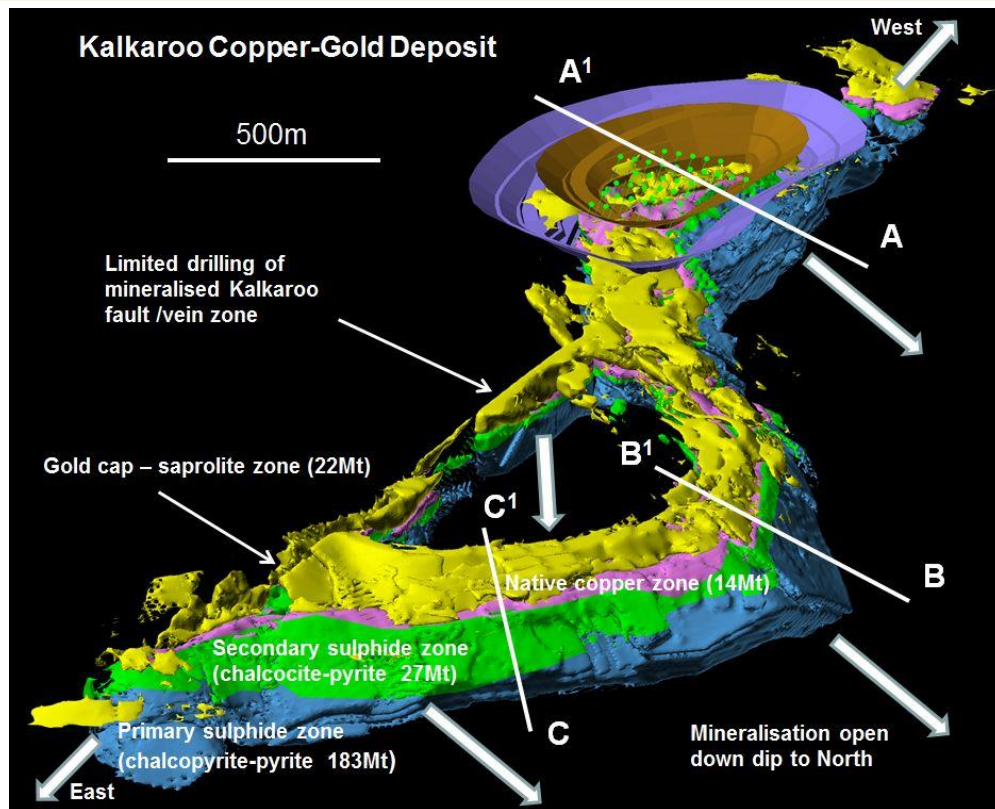


Copper 1.1 Mt

Cobalt 23.2 Kt

Gold 3.1 Moz

Australia's largest undeveloped open pit copper-cobalt-gold deposit

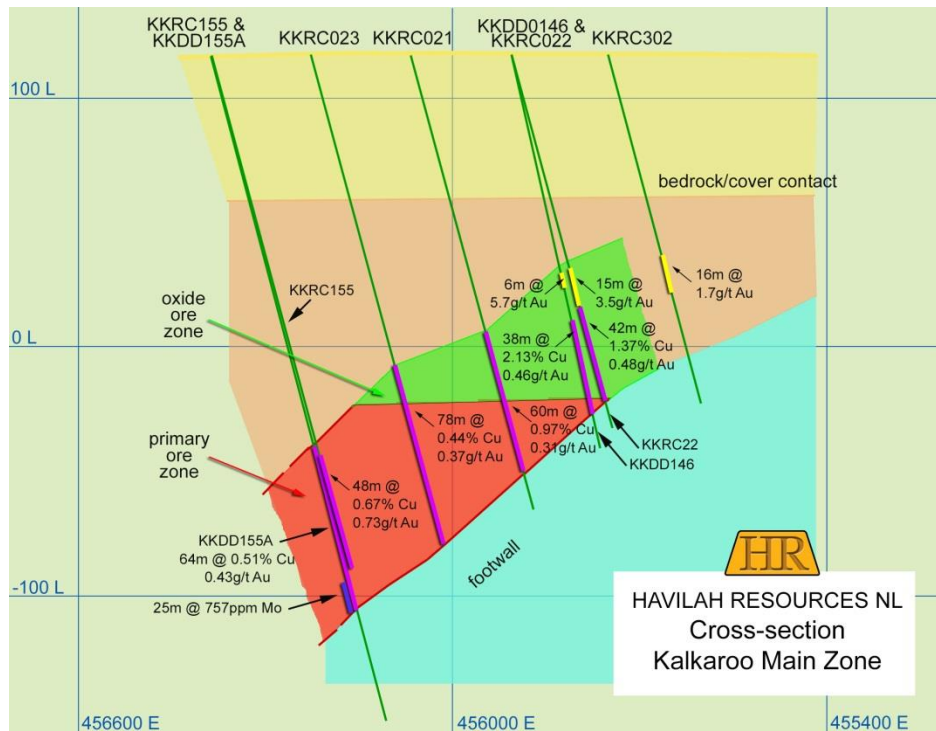


Kalkaroo Deposit

A thick, stratabound replacement style copper-cobalt-gold deposit.

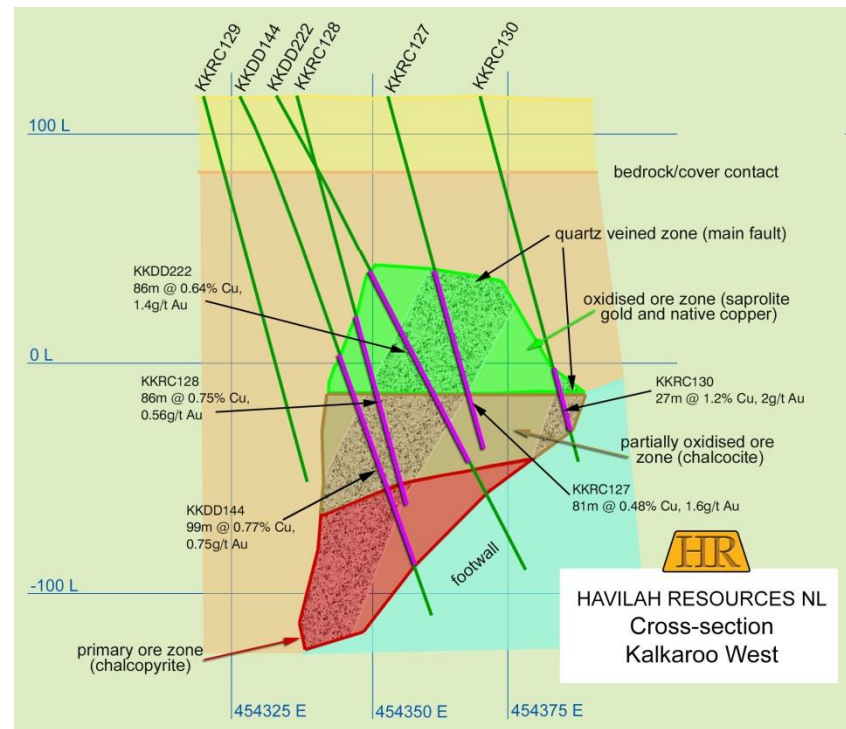
C

C¹



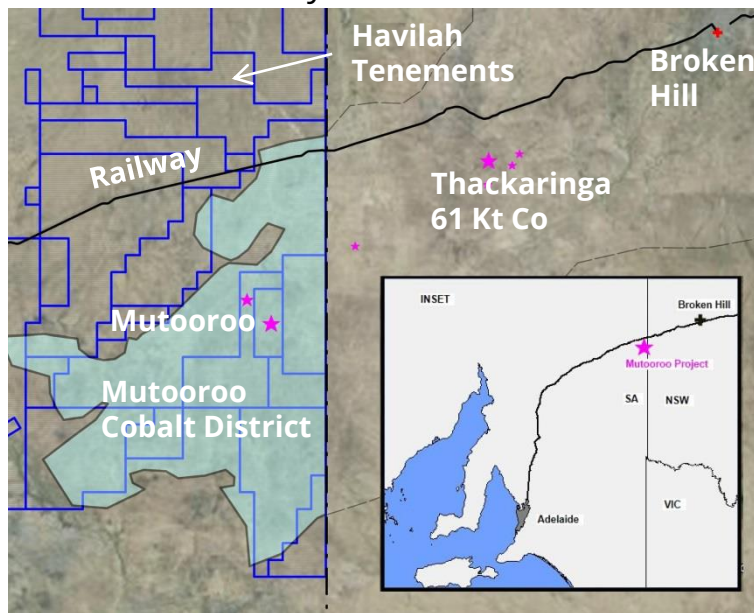
A

A¹

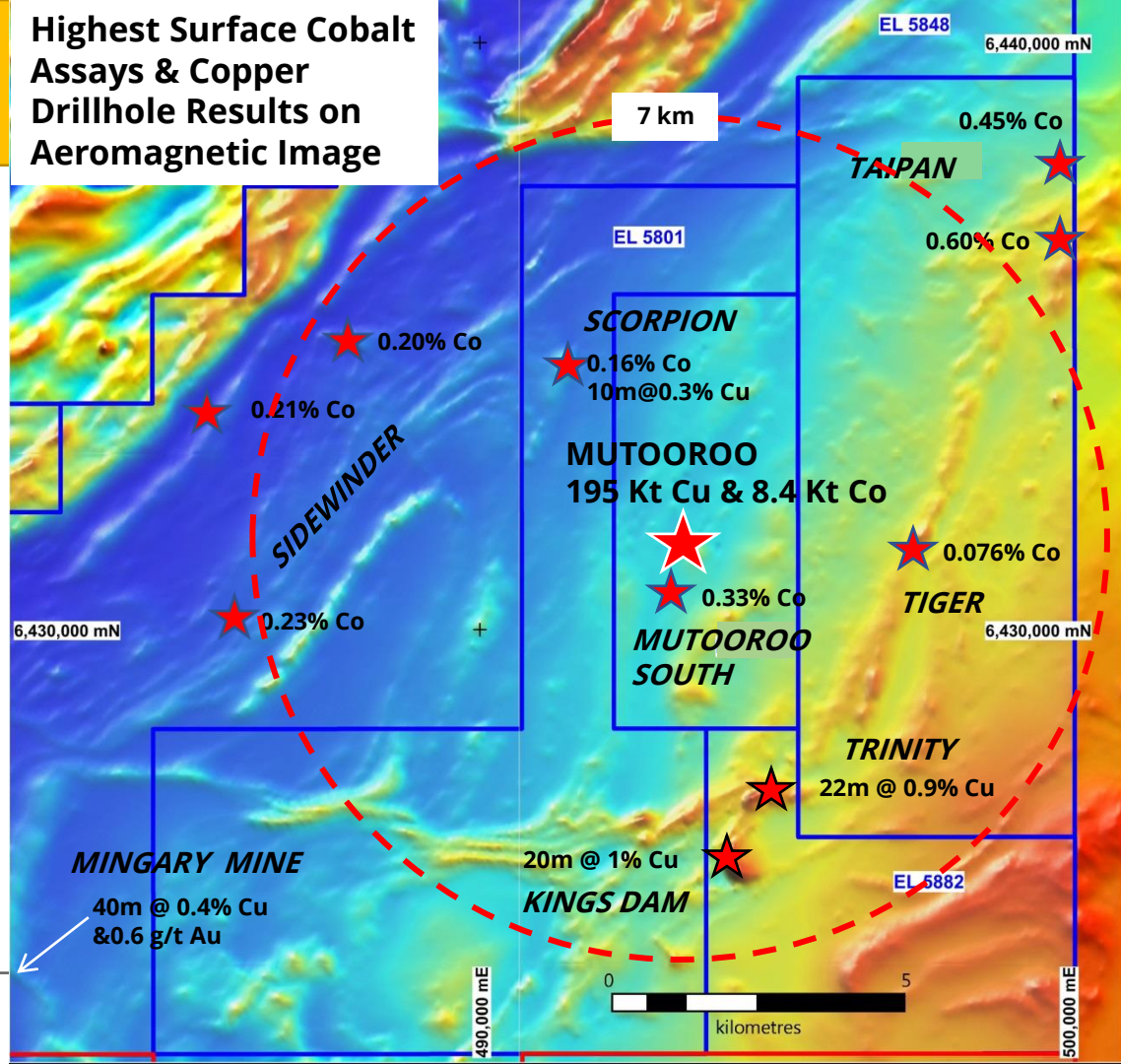


Mutooroo Cobalt District

- A major new copper-cobalt province identified in NE South Australia.
- 5 new copper-cobalt prospects identified, with very high cobalt surface samples.
- Walk up drill targets at Scorpion, Kings Dam and Trinity.

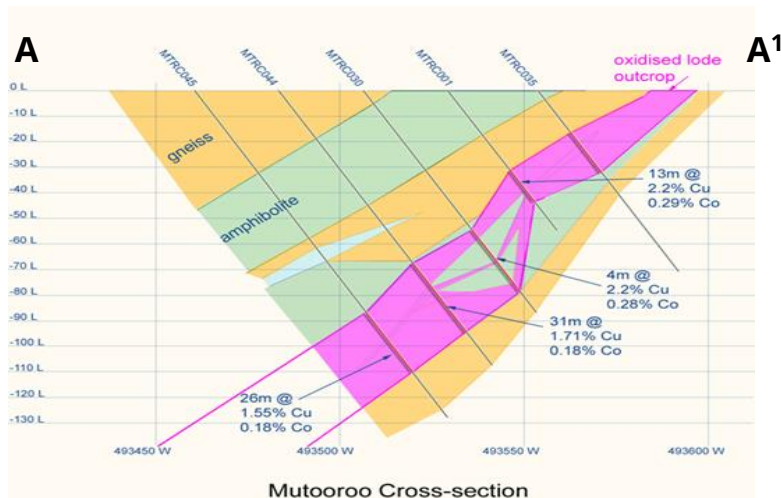


Highest Surface Cobalt Assays & Copper Drillhole Results on Aeromagnetic Image



Mutooroo Project

- Located close to Broken Hill and railway line.
- Economics underpinned by copper (1.5% Cu open pit), with appreciable cobalt upside.
- Resource expansion potential along strike, at depth, and in nearby prospects (eg Scorpion)

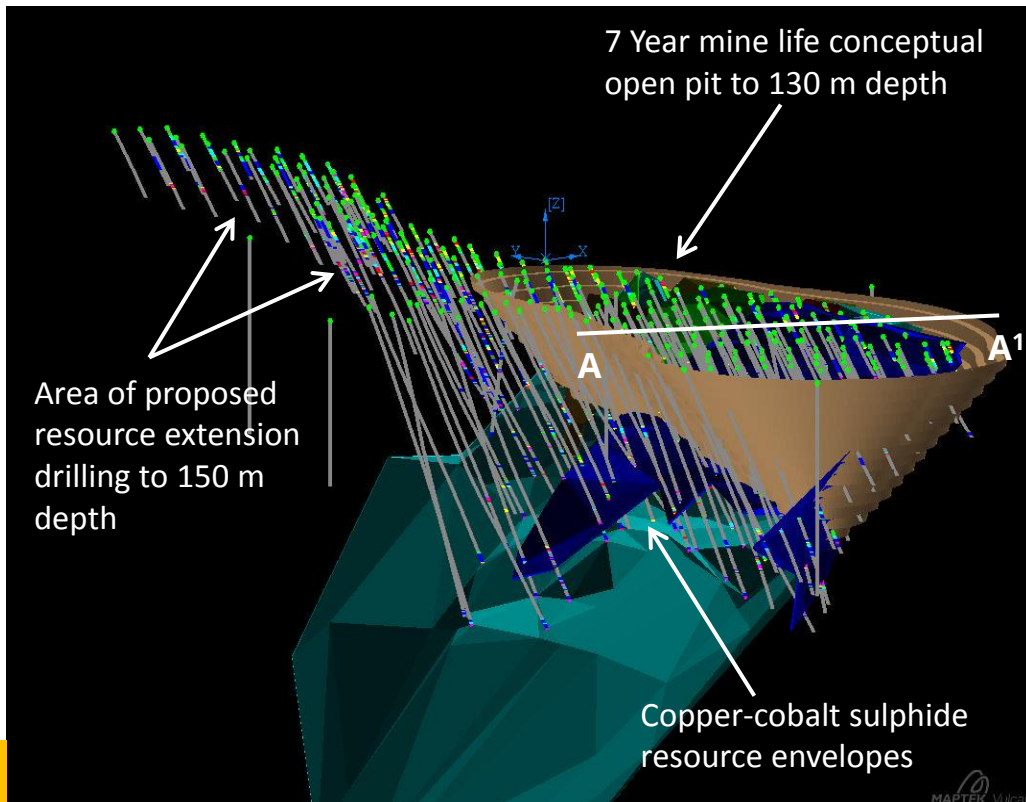


Copper 195.0 Kt

Cobalt 8.4 Kt

Gold 44.6 Koz

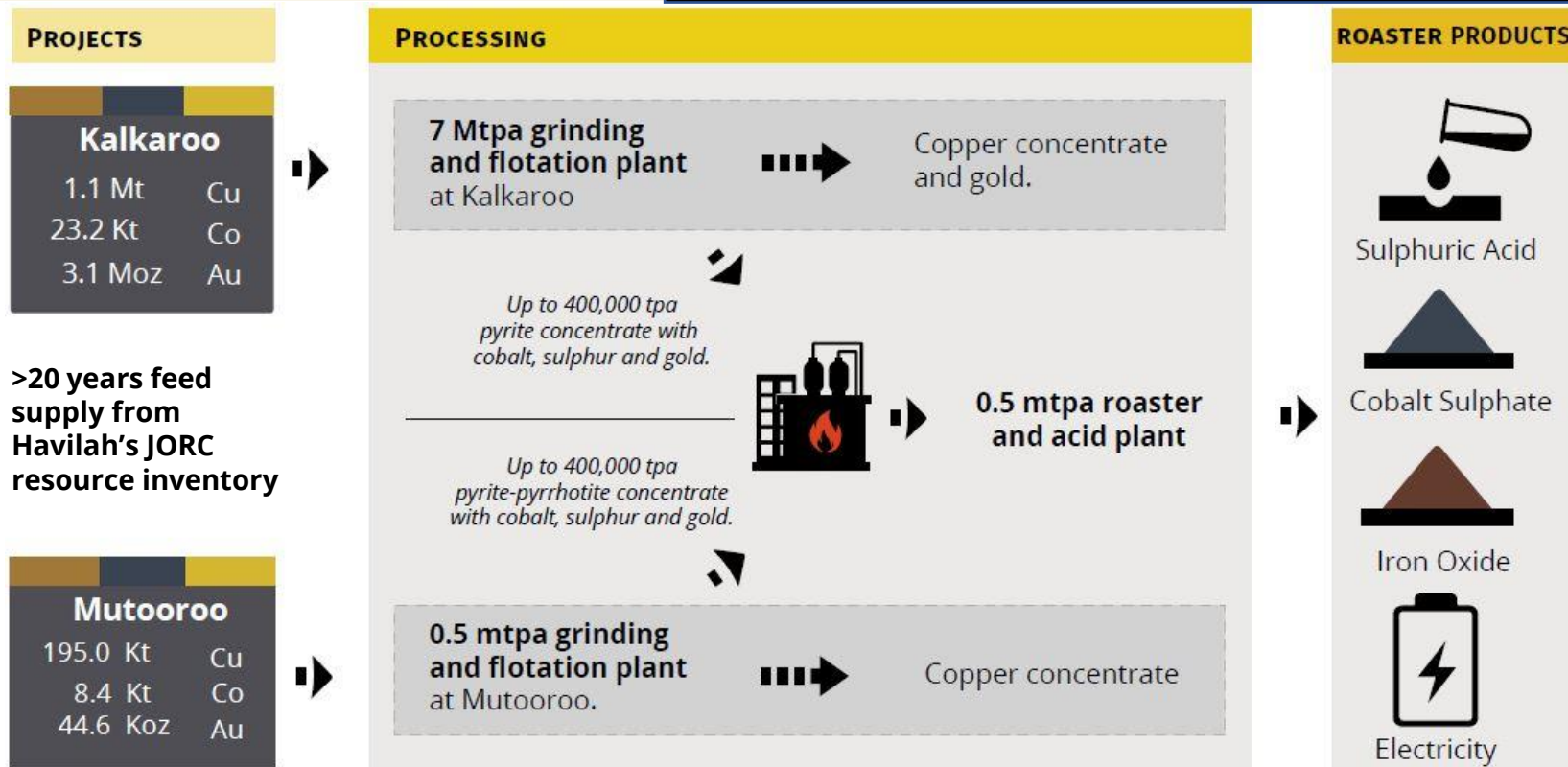
1.5% copper and 0.14% cobalt grade open pit located only 40 minutes from Broken Hill .



Havilah Resources

Havilah's Copper Strategy

The Big Picture is an integrated minerals processing industry in SA producing valuable products including cobalt, acid and electricity.



JORC Resource Inventory

Project*	Classification	Category	Tonnes	Copper (%)	Cobalt (%)	Gold (g/t)	Copper (tonnes)	Cobalt (tonnes)	Gold (ounces)
Mutooroo ¹	Measured	Oxide	598,000	0.56	0.040	0.08			
	Total	Oxide	598,000	0.56	0.040	0.08	3,300	200	1,500
	Measured	Sulphide Copper-Cobalt-Gold	4,149,000	1.23	0.140	0.18			
	Indicated	Sulphide Copper-Cobalt-Gold	1,697,000	1.52	0.140	0.35			
	Inferred	Sulphide Copper-Cobalt-Gold	6,683,000	1.71	ISD	ISD			
	Total	Sulphide Copper-Cobalt-Gold	12,529,000	1.53			191,700	8,200	43,100
		Total Mutooroo	13,127,000				195,000	8,400	44,600
Kalkaroo ²	Measured	Oxide Gold Cap	12,000,000			0.82			
	Indicated	Oxide Gold Cap	6,970,000			0.62			
	Inferred	Oxide Gold Cap	2,710,000			0.68			
	Total	Oxide Gold Cap	21,680,000			0.74			515,900
	Measured	Sulphide Copper-Gold	85,600,000	0.57		0.42			
	Indicated	Sulphide Copper-Gold	27,900,000	0.49		0.36			
	Inferred	Sulphide Copper-Gold	110,300,000	0.43		0.32			
	Total	Sulphide Copper-Gold	223,800,000	0.49		0.36	1,096,600		2,590,600
		Total Kalkaroo	245,480,000				1,096,600	23,200	3,106,500
	Inferred	Cobalt Sulphide ⁴	193,000,000		0.012			23,200	
North Portia ³	Inferred	Oxide	490,000			1.17			
	Total	Oxide	490,000			1.17			18,400
	Measured	Supergene Sulphide Copper-Gold	3,237,000	0.77	0.015	0.50			
	Indicated	Supergene Sulphide Copper-Gold	480,000	0.53	0.016	0.58			
	Inferred	Supergene Sulphide Copper-Gold	138,000	0.45	0.021	0.44			
	Total	Supergene Sulphide Copper-Gold	3,855,000	0.73	0.015	0.51	28,100	600	63,000
	Inferred	Primary Sulphide Copper-Gold	8,610,000	0.85	ISD	0.64			
	Total	Total Sulphide	12,465,000	0.81		0.60	101,000	600	240,600
		Total North Portia	12,955,000				101,000	600	259,000
Total All Projects		All Categories (rounded)	271,562,000				1,392,600	32,200	3,410,100

* Based on JORC resources, details released to ASX: 1. 23 Oct 2010, 2. 30 Jan 2018 & 7 Mar 2018, 3. 18 Oct 2010 & 14 May 2018. The Company confirms that it is not aware of any new information or data that materially affects the resource figures included in the above table and that all material assumptions and technical parameters underpinning the estimates in the relevant market announcement continue to apply and have not materially changed.

ISD means insufficient data.

⁴The Kalkaroo cobalt Inferred resource is not added to the total tonnage.

Cautionary and Competent Person Statement

Cautionary Statement

The information contained in this presentation is not financial product advice. The presentation is for information purposes and is of a general and summary nature only. Neither Havilah Resources Limited (Havilah) nor any member of the Havilah Group of companies, gives no warranties in relation to the statements and information in this presentation. Investors should seek appropriate advice on their own objectives, financial situation and needs.

This presentation contains certain statements which may constitute “forward-looking statements”. Such statements are only predictions and are subject to inherent risks and uncertainties which could cause actual values, performance or achievements to differ materially from those expressed, implied or projected in any forward looking statements.

Havilah disclaims any intent or obligation to update publicly any forward-looking statements, whether as a result of new information, future events or results or otherwise.

Investors are cautioned that forward-looking statements are not guarantees of future performance and investors are cautioned not to put undue reliance on forward-looking statements due to the inherent uncertainty therein.

Competent Person Statement

The information in this presentation that relates to Exploration Targets , Exploration Results, Mineral Resources and Ore Reserves is based on data compiled by geologist, Dr Chris Giles, a Competent Person who is a member of The Australian Institute of Geoscientists. Dr. Giles is a director of the Company and is employed by the Company on a consulting contract. Dr. Giles has sufficient experience, which is relevant to the style of mineralisation and type of deposit and activities described herein to qualify as a Competent Person as defined in the 2012 Edition of 'Australasian Code for Reporting of Exploration Results, Mineral Resources and Ore Reserves'. Dr. Giles consents to the inclusion in the presentation of the matters based on his information in the form and context in which it appears. Information for Kalkaroo has been updated to comply with the JORC Code 2012. All other information was prepared and first disclosed under the JORC Code 2004 and is presented on the basis that the information has not materially changed since it was last reported.

All drillhole results cited relate to various ASX releases, noting that the Company confirms that it is not aware of any new information or data that materially affects the information included in the relevant announcement and, in the case of the mineral resources that all material assumptions and technical parameters underpinning the estimates in the relevant market announcement continue to apply and have not materially changed.



Havilah Resources

A New Mining Force in South Australia



CORPORATE

Havilah Resources Limited
ABN: 39 077 435 520
ASX Code: HAV



OFFICE:

Level 1
164 Fullarton Road
Dulwich, SA 5065, Australia
Tel: + 61 (08) 8155 4500
Email: info@havilah-resources.com.au



FIND US HERE:

www.havilah-resources.com.au



youtube.com/havilahresources



linkedin.com/havilah-resources



facebook.com/havilahres



twitter.com/havilahres