

VISIBLE GOLD FROM DRILLING AT MORNING STAR GOLD MINE

AuStar Gold Limited (ASX: AUL) ('AuStar Gold' or 'the Company') provides the following update in relation to its current diamond drilling program at the Morning Star Gold Mine:

Highlights

- **Visible gold reported in the first hole completed in the new drilling program**
- **Logging and assays indicate the presence of several zones of gold mineralisation**
- **Assays from the first diamond drill hole include the following significant results:**
 - **0.65m @6.02 g/t Au** from 31.3 m down hole
 - **0.75m @10.92 g/t Au** from 43.4 m down hole
- **Potential for significant increase in mineable tonnage of material from existing infrastructure**

CEO Mr Tom De Vries said: "These results help to validate our revised geological models and increase our confidence in reviewing and understanding of the large data base available in the Morning Star mine. This is the first hole in a planned 8 hole program and to have success so early in the program is very encouraging."

"Although this is the first hole into this structure, the initial view is that this maybe the continuation of a previously mined structure. With the presence of visible gold and associated high grades this area may well be amenable for mining and processing and has increased our priority on completing the drilling program".

Overview of Target Zone

AuStar's strategy in relation to the Morning Star gold mine is to identify and prioritise exploration targets within the mine to develop diversified production sources and cashflow, utilising the Company's fully re-commissioned and proven mine infrastructure and gravity gold processing plant.

The Company's geological team have recently completed a detailed inspection and review of samples, assays and drill core from a target zone which is in the proximity of Maxwell and Stone reefs. The outcome of this review is that AuStar has identified this target zone between Level 7 and Level 8 of the Morning Star gold mine as highly prospective for gold mineralisation and, have accordingly, commenced a drill program (refer to ASX announcement dated 3 July 2018).

Drilling Results

The drill program is being undertaken from Level 7 in the Morning Star mine from a single location towards the southern end of the mine's dyke. This will improve drilling efficiency as the program will not require additional rig moves and set-up.

This hole is the first in a program of 8 holes, following up on existing data from previous historical drilling that had anomalous high grade results. The hole passed through 2 separate zones of altered dyke and quartz with gold mineralisation of **0.75m @10.92 g/t** from 43.4 m and **0.65m @6.02 g/t** from 31.30 m down hole, separated by 10.90 metres of the Morning Star dyke.

Figure 1. Isometric of planned drill program and interpreted position of the Target Zone

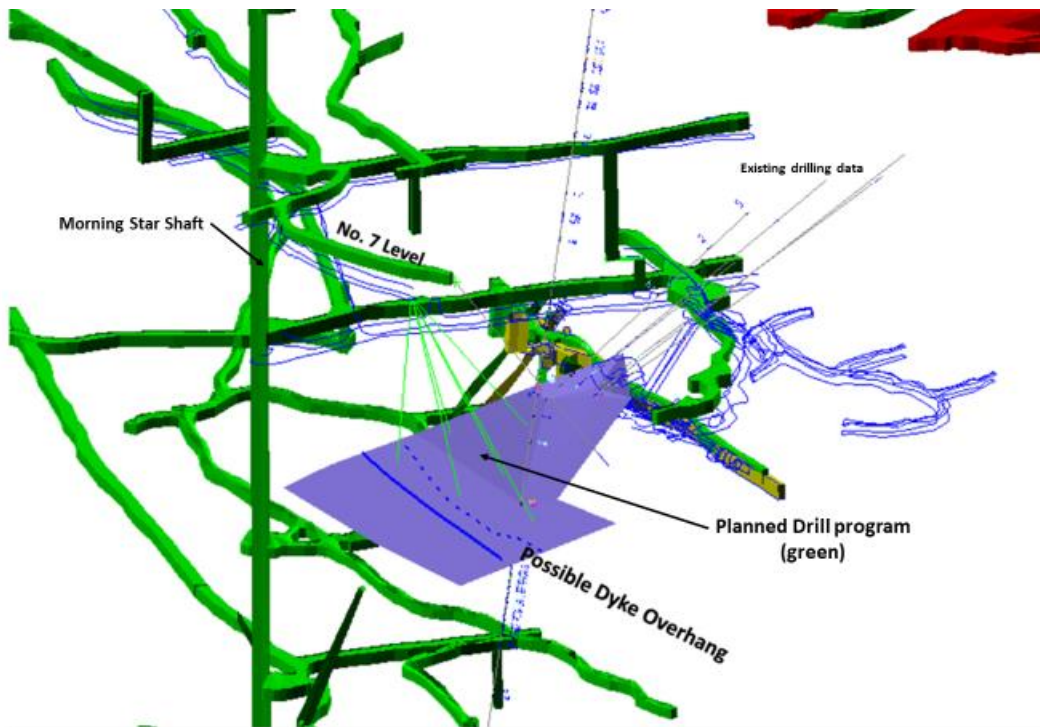


Table 1. Drill Hole and Significant Intersection.

HOLE ID	Sample ID	From	To	Interval	Grade g/t	Comment
L7016	A7010	31.30	31.90	0.60	6.02	
L7016	A7012	42.75	43.40	0.65	1.31	
L7016	A7013	43.40	44.25	0.85	10.92	Viz Gold at 44.15

Table 2. Drill Hole Locations.

Hole_ID	MineGrid East	MineGrid North	RL (m)	Dip	Dir (MineGrid)	EOH (m)	Status
L7015	7998.917	12950.922	515.869	-50	152	48	In Progress
L7016	7999.397	12951.197	515.857	-48	125.5	47.2	Completed
L7017	7999.062	12951.681	515.829	-63	108	46	Planned
L7018	7999.516	12952.21	515.862	-51	78.5	51	Planned
L7019	7998.647	12951.579	515.83	-72	138	43	Planned
L7020	7999.044	12952.478	515.813	-60	54	46	Planned
L7021	7998.56	12952.238	515.797	-78	33	41	Planned
L7022	7998.483	12951.153	515.852	-60	171	45	Planned

Photo 1. Mineralised zone in drill core (L7016 39.07m-45.37m, tray 7 of 8), showing fresh dyke, altered dyke and mineralized quartz. Visible gold at 44.15 m down hole.

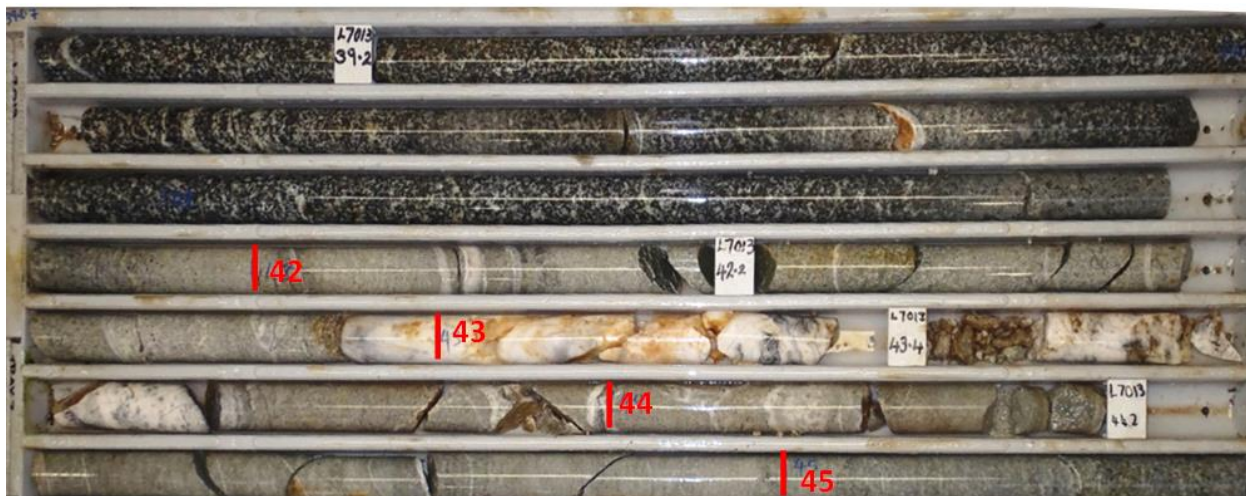


Photo 2. Visible gold in altered dyke in drillhole L7016, at 44.15 m down hole.



About AuStar Gold Limited:

AuStar Gold is focused on the return to production of the Morning Star mine and its environs - **an advanced high-grade gold project, with significant infrastructure including processing plant, a strategic tenement footprint, and prospectively, well positioned for near-term mining.**

In addition, AuStar Gold intends to develop its adjoining tenements in the Walhalla to Jamieson gold district (particularly the prolific Woods Point Dyke Swarm) into low cost high grade gold production projects.

For Further Information:

Tom de Vries
Chief Executive Officer
AuStar Gold Limited
info@austargold.com

Competent Persons Statement

The information in this report that relates to exploration and exploration results is based geological information compiled by Mr Peter de Vries, (BAppSc) a consulting geologist, on behalf AuStar Gold Limited. Mr de Vries is a member of the Australasian Institute of Mining and Metallurgy (MAIMM) and the Australian Institute of Geoscientists (MAIG) and is a Competent Person as defined by the 2012 edition of the Australasian Code for Reporting of Exploration Results, Mineral Resources and Ore Reserves (JORC Code), having more than five years' experience which is relevant to the style of mineralisation and type of deposit described in this report, and to the activity for which he is accepting responsibility. Mr de Vries consents to the publishing of the information in this report in the form and context in which it appears.

Section 1 Sampling Techniques and Data

(Criteria in this section apply to all succeeding sections.)

Criteria	JORC Code explanation	Commentary
Sampling techniques	<ul style="list-style-type: none"> Nature and quality of sampling (e.g. cut channels, random chips, or specific specialized industry standard measurement tools appropriate to the minerals under investigation, such as down hole gamma sounds, or handheld XRF instruments, etc). These examples should not be taken as limiting the broad meaning of sampling. Include reference to measures taken to ensure sample representivity and the appropriate calibration of any measurement tools or systems used. Aspects of the determination of mineralisation that are Material to the Public Report. In cases where 'industry standard' work has been done this would be relatively simple. 	<ul style="list-style-type: none"> Full drill core has been submitted for analysis. the drill core is LTK 48 in size Sample intervals are between 0.30 and 1.0 metres as the mineralization consists of multiple narrow veins within a diorite host. The presence of coarse gold will see underestimation of gold grades in drilling utilizing Fire Assay techniques. 2kg Leachwell analysis with fire assay tail will minimize this effect on a sample by sample basis. 0.5 metre lengths of LTK 48 drill core approximate 1.8kg for sample efficiency. Samples are pulverized to -75 Micron before subjected to 24 hr bottle roll with Leachwell. AAs readings are taken before the sample tail is washed, dried and a 50g Fire assay completed to check unleached gold.
Drilling techniques	<ul style="list-style-type: none"> Drill type (eg core, reverse circulation, open-hole hammer, rotary air blast, auger, Bangka, sonic, etc) and details (eg core diameter, triple or standard tube, depth of diamond tails, face-sampling bit or other type, whether core is oriented and if so, by what method, etc). 	<ul style="list-style-type: none"> The Morning Star diamond drilling program is being undertaken utilizing a pneumatically powered Kempe diamond drill producing LTK 48 size drill core (and capable of drilling up and down holes to angles of ~85 degrees. Drilling is being carried out by Starwest Drilling. Down hole surveys have been carried out. All collar positions will be surveyed upon completion of the program

Criteria	JORC Code explanation	Commentary
Drill sample recovery	<ul style="list-style-type: none"> Method of recording and assessing core and chip sample recoveries and results assessed. Measures taken to maximise sample recovery and ensure representative nature of the samples. Whether a relationship exists between sample recovery and grade and whether sample bias may have occurred due to preferential loss/gain of fine/coarse material. 	<ul style="list-style-type: none"> The core is marked up and measured by geologists. Core recovered (CR) is compared with the metres drilled (MD, recorded by the drillers in their 'run sheets') and a 'core recovery' percentage is calculated; $CR/MD \times 100 = \% \text{ recovered}$. Vein density is random and variable within the gross structural controls. Vein orientation takes two preferred orientations. The general "type" vein orientation is a flat ~10 degree dipping TVA with the second orientation being a conjugate set which are generally smaller but cut the previous veinset with minor displacements
Logging	<ul style="list-style-type: none"> Whether core and chip samples have been geologically and geotechnically logged to a level of detail to support appropriate Mineral Resource estimation, mining studies and metallurgical studies. Whether logging is qualitative or quantitative in nature. Core (or costean, channel, etc) photography. The total length and percentage of the relevant intersections logged. 	<ul style="list-style-type: none"> Logs exist for all of the drillholes on the property. The history of Exploration on the property has seen the one set of log codes utilized consistently. The logging describes the dominant and minor rock types, colour, mineralisation, oxidation, alteration, vein type, core recovery, basic structure (hardness has not been logged). Some geotechnical logging has taken place, though in most cases the existence of extensive underground development has meant that geotechnical work has been more focused on underground exposures. Core is photographed after markup and before sampling. Marked core for sampling is also photographed.
Sub-sampling techniques and sample preparation	<ul style="list-style-type: none"> If core, whether cut or sawn and whether quarter, half or all core taken. If non-core, whether riffled, tube sampled, rotary split, etc and whether sampled wet or dry. For all sample types, the nature, quality and appropriateness of the sample preparation technique. Quality control procedures adopted for all sub-sampling stages to maximise representivity of samples. Measures taken to ensure that the sampling is representative of the in situ material collected, including for instance results for field duplicate/second-half sampling. Whether sample sizes are appropriate to the grain size of the material being sampled. 	<ul style="list-style-type: none"> Full core has been sampled Core samples were assayed at the Gekko laboratory located in Ballarat, and at Onsite labs in Bendigo Total pulverization before subsampling for assay is carried out at the lab by grinding via a mixer mill to 90% passing -75 microns. Initial sampling is by 2kg BLEG (Leachwell) to ensure coarse gold is effectively sampled. A further fire assay of the washed pulp tail after leaching is undertaken to test for residual un leached gold.
Quality of assay data and laboratory tests	<ul style="list-style-type: none"> The nature, quality and appropriateness of the assaying and laboratory procedures used and whether the technique is considered partial or total. For geophysical tools, spectrometers, handheld XRF instruments, etc, the parameters used in determining the analysis 	<p>A standard sample is randomly inserted for approximately every 15 – 20 samples that are submitted.</p> <p>Laboratory blanks and random rechecks are also utilized by Gekko</p>

Criteria	JORC Code explanation	Commentary
	<p>including instrument make and model, reading times, calibrations factors applied and their derivation, etc.</p> <ul style="list-style-type: none"> Nature of quality control procedures adopted (eg standards, blanks, duplicates, external laboratory checks) and whether acceptable levels of accuracy (ie lack of bias) and precision have been established. 	
Verification of sampling and assaying	<ul style="list-style-type: none"> The verification of significant intersections by either independent or alternative company personnel. The use of twinned holes. Documentation of primary data, data entry procedures, data verification, data storage (physical and electronic) protocols. 	<ul style="list-style-type: none"> All reported data was subjected to validation and verification prior to release Submitted standards are tabled and compared to stated value Data from logging and assay is being entered into excel and imported into a 3D modeling program (Micromine) for modeling and geological analysis.
Location of data points	<ul style="list-style-type: none"> Accuracy and quality of surveys used to locate drill holes (collar and down-hole surveys), trenches, mine workings and other locations used in Mineral Resource estimation. Specification of the grid system used. Quality and adequacy of topographic control. 	<ul style="list-style-type: none"> All holes were located by direct measurement from underground survey points. Contract surveyors will pick up collars on completion of program for high level of accuracy. The coordinates used are a local mine grid with Morning Star Shaft collar points used as centre coordinate 5000mE and 5000mN. The vertical axis is ASL +1000m. All bearings are rotated 48 degrees counter-clockwise from true north. The topography control is of a high standard.
Data spacing and distribution	<ul style="list-style-type: none"> Data spacing for reporting of Exploration Results. Whether the data spacing and distribution is sufficient to establish the degree of geological and grade continuity appropriate for the Mineral Resource and Ore Reserve estimation procedure(s) and classifications applied. Whether sample compositing has been applied. 	<ul style="list-style-type: none"> Drilling has been carried out from underground drill cuddies. Reported drill holes are designed to intersect projected structural target at around 10 metre centres The aim of the drill program is to test for the presence of unmined mineralised structures that may contain economically definable amounts of gold. Sample compositing has not been applied
Orientation of data in relation to geological structure	<ul style="list-style-type: none"> Whether the orientation of sampling achieves unbiased sampling of possible structures and the extent to which this is known, considering the deposit type. If the relationship between the drilling orientation and the orientation of key mineralised structures is considered to have introduced a sampling bias, this should be assessed and reported if material. 	<ul style="list-style-type: none"> The drilling has been targeted to intersect mineralized veins at a steep angle, although some oblique holes have been drilled due to the locations of available drill sites. However, this has been taken into account in such a way as to eliminate sampling bias. No significant sample bias based on drill hole orientation is noted The mineralisation at the Morning Star mine consist of quartz infilled reverse faults of varying dips and orientations located with the Morning Star Diorite dyke.
Sample security	<ul style="list-style-type: none"> The measures taken to ensure sample security. 	<ul style="list-style-type: none"> The chain of custody for samples was managed by AuStar Gold Ltd, with an established set of procedures designed to maintain sample security

Criteria	JORC Code explanation	Commentary
Audits or reviews	<ul style="list-style-type: none"> The results of any audits or reviews of sampling techniques and data. 	<ul style="list-style-type: none"> No independent review has been undertaken of the announced drill results

Section 2 Reporting of Exploration Results

(Criteria listed in the preceding section also apply to this section.)

Criteria	JORC Code explanation	Commentary
Mineral tenement and land tenure status	<ul style="list-style-type: none"> Type, reference name/number, location and ownership including agreements or material issues with third parties such as joint ventures, partnerships, overriding royalties, native title interests, historical sites, wilderness or national park and environmental settings. The security of the tenure held at the time of reporting along with any known impediments to obtaining a licence to operate in the area. 	<ul style="list-style-type: none"> The Morning Star mine is located within MIN5009, which is wholly owned by AuStar Gold and its subsidiaries. The assets were acquired from receivers in 2016. The Morning Star mine is located approximately 90km southeast of Mansfield in Eastern Victoria, near the town of Woods Point. The Rose of Denmark lies within MIN5299 and is wholly owned by AuStar Gold and its subsidiaries.
Exploration done by other parties	<ul style="list-style-type: none"> Acknowledgment and appraisal of exploration by other parties. 	<ul style="list-style-type: none"> The Morning Star Gold mine has been intermittently active since 1861, with a large number of owners and operators. The mine was operated by Gold Mines of Australia between 1930 and 1960, and then briefly operated by Morning Star Gold Mines NL until 1963. Production up to that point has been variably estimated to be between 630,000 and 830,000 oz Au at grades from 25-30 g/t Au. Mount Conqueror acquired the asset in 1993 and carried out exploration development under that name and then subsequently under the name of Morning Star Gold. The company went into suspension in June 2012 and receivership in 2014.
Geology	<ul style="list-style-type: none"> Deposit type, geological setting and style of mineralisation. 	<ul style="list-style-type: none"> The project area lies within the Woods Point – Walhalla Synclinorium structural domain of the Melbourne zone, a northwest-trending belt of tightly folded Early Devonian Walhalla Group sandy turbidites. The domain is bounded by the Enoch's Point and Howe's Creek Faults, both possible detachment-related splay structures that may have controlled the intrusion of the Woods Point Dyke Swarm and provided the conduits for gold-bearing hydrothermal fluids. The local structural zone is referred to as the Ross Creek Faults Zone (RCFZ) Most gold mineralisation in the Woods Point to Gaffney's Creek corridor occurs as structurally-controlled quartz ladder vein systems hosted by dioritic dyke bulges. Rose of Denmark exhibits all these characteristics
Drill hole Information	<ul style="list-style-type: none"> A summary of all information material to the understanding of the exploration results including a tabulation of the following information for all Material drill holes: <ul style="list-style-type: none"> easting and northing of the drill hole collar elevation or RL (Reduced Level – elevation above 	<ul style="list-style-type: none"> See table in above document

Criteria	JORC Code explanation	Commentary
	<p>sea level in metres) of the drill hole collar</p> <ul style="list-style-type: none"> o dip and azimuth of the hole o down hole length and interception depth o hole length. 	
Data aggregation methods	<ul style="list-style-type: none"> • In reporting Exploration Results, weighting averaging techniques, maximum and/or minimum grade truncations (eg cutting of high grades) and cut-off grades are usually Material and should be stated. • Where aggregate intercepts incorporate short lengths of high grade results and longer lengths of low grade results, the procedure used for such aggregation should be stated and some typical examples of such aggregations should be shown in detail. • The assumptions used for any reporting of metal equivalent values should be clearly stated. 	<ul style="list-style-type: none"> • In all previous ASX releases the assays are given 'un-cut' unless otherwise stated & weighted averaging of results is used: in which the average grade is the sum of the products of length and grade for each sample in the interval, divided by the total length of the interval. A nominal cutoff of 0.1g/t is used for identification of potentially significant intercepts for reporting purposes. • Most of the reported intercepts are shown in sufficient detail, including gold maxima and subintervals, to allow the reader to make an assessment of the balance of high and low grades in the intercept. • Metal equivalents are not used.
Relationship between mineralisation widths and intercept lengths	<ul style="list-style-type: none"> • These relationships are particularly important in the reporting of Exploration Results. • If the geometry of the mineralisation with respect to the drill hole angle is known, its nature should be reported. • If it is not known and only the down hole lengths are reported, there should be a clear statement to this effect (eg 'down hole length, true width not known'). 	<ul style="list-style-type: none"> • Mineralised structures at Morning Star are variable in orientation, and therefore drill orientations have been adjusted from place to place in order to allow intersection angles as close as possible to true widths. • Exploration results have been reported as an interval with 'from' and 'to' stated in tables of significant economic intercepts. Tables clearly indicate that true widths will generally be narrower than those reported. • An estimate of true width can be made based on the known strike of mineralised quartz veins or quartz breccias, although it should be noted that these features are not absolutely planar and anastomosing does occur, with variable strike and dip.
Diagrams	<ul style="list-style-type: none"> • Appropriate maps and sections (with scales) and tabulations of intercepts should be included for any significant discovery being reported. These should include, but not be limited to a plan view of drill hole collar locations and appropriate sectional views. 	<ul style="list-style-type: none"> • See attached figures and plates.
Balanced reporting	<ul style="list-style-type: none"> • Where comprehensive reporting of all Exploration Results is not practicable, representative reporting of both low and high grades and/or widths should be practiced to avoid misleading reporting of Exploration Results. 	<ul style="list-style-type: none"> • Only initial significant results for the first hole is shown. Future drilling results will be followed by basic data.
Other substantive exploration	<ul style="list-style-type: none"> • Other exploration data, if meaningful and material, should be reported including 	<ul style="list-style-type: none"> • Results of an ongoing structural reappraisal of the mine are presented in some of the diagrams in this release. • These diagrams are schematic in nature based on field

Criteria	JORC Code explanation	Commentary
data	<i>(but not limited to): geological observations; geophysical survey results; geochemical survey results; bulk samples – size and method of treatment; metallurgical test results; bulk density, groundwater, geotechnical and rock characteristics; potential deleterious or contaminating substances.</i>	observations yet to be fully digitized in 3 D space (this work is ongoing)
Further work	<ul style="list-style-type: none"> <i>The nature and scale of planned further work (eg tests for lateral extensions or depth extensions or large-scale step-out drilling).</i> <i>Diagrams clearly highlighting the areas of possible extensions, including the main geological interpretations and future drilling areas, provided this information is not commercially sensitive.</i> 	<ul style="list-style-type: none"> Further exploration drilling from underground is planned, along in order to gain confidence regarding drilled grades. Gaining a correlation between drilled grades and recovered grades from large scale sampling is a key aim of this program and will be a significant factor in reporting resources and reserves to appropriate standards

Section 3 Estimation and Reporting of Mineral Resources

(Criteria listed in section 1, and where relevant in section 2, also apply to this section.)

Section 3 does not pertain to this report.

Section 4 Estimation and Reporting of Ore Reserves

(Criteria listed in section 1, and where relevant in sections 2 and 3, also apply to this section.)

Section 4 does not pertain to this report.

End