



Real Energy Corporation Limited
Level 3, 32 Walker Street North Sydney NSW 2060
Telephone 02 9955 4008

Tamarama-2 & 3 Well Stimulation Campaign

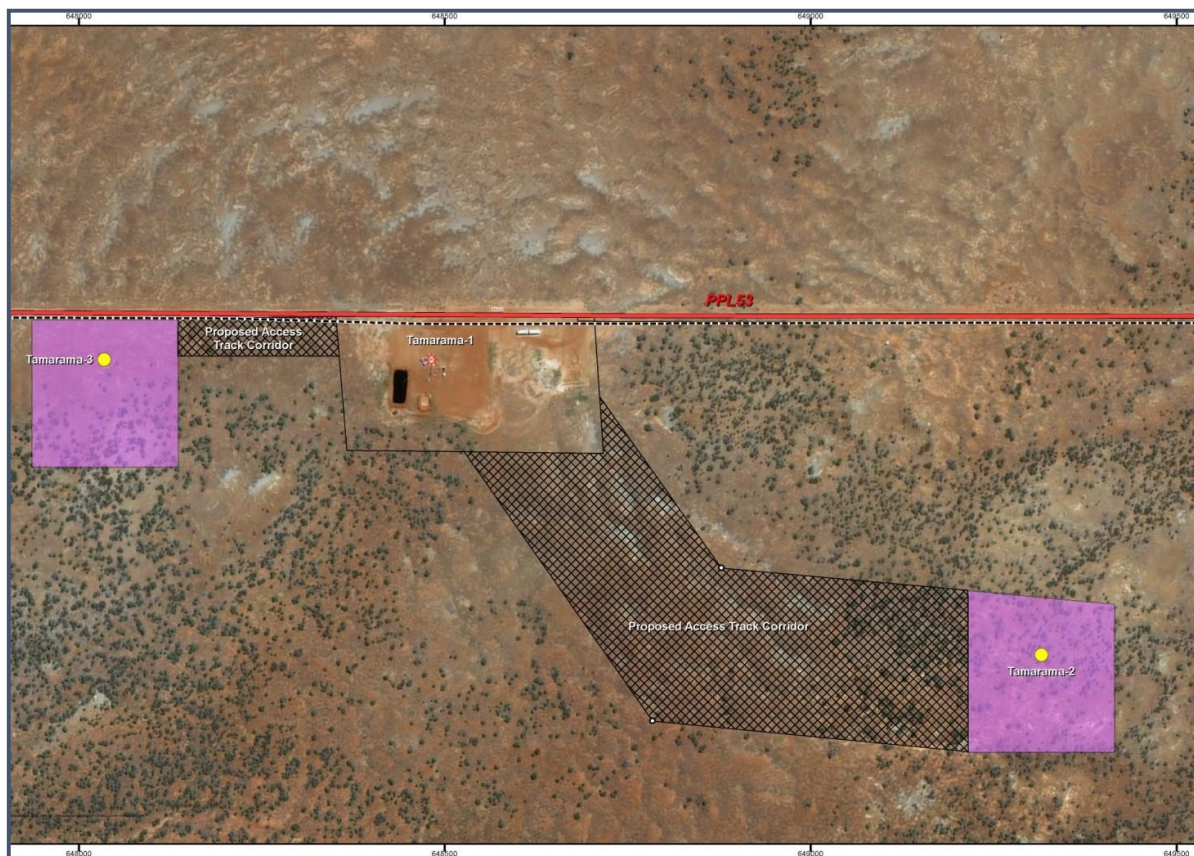
- **Two-week operations expected to commence late next month**
- **Halliburton Australia appointed to provide services**
- **Equipment and long lead time items ordered**

Sydney, 13 August 2018: Cooper Basin focused oil & gas company, Real Energy Corporation Limited (ASX:RLE) ("Real Energy"), is pleased to announce that it has appointed global oilfield services company Halliburton Australia to undertake fracture stimulation services at the company's Tamarama-2 and 3 wells, located in ATP 927P, Cooper Basin, Queensland.

Real Energy expects to commence the multi-stage fracture stimulation program, in the Toolachee-Patchawarra formation sections at depth below 2,300m in both Tamarama-2 & Tamarama-3 in late September 2018, subject to weather conditions. The Company has also ordered the necessary equipment and long lead items required to undertake the stimulation program.

Real Energy's Managing Director Scott Brown commented: "The well stimulation of Tamarama-2 and Tamarama-3 is an important step for the company as we move towards commercialising our gas resources in the Queensland Cooper Basin. We believe we will be able to prove commercial flow rates with these wells which will form the basis for our field development program."

"Real Energy is well-placed to take full advantage of the growing demand for east coast gas, and this well stimulation program will further build on the excellent results we have received to date at our 100%-owned ATP927P acreage. We will continue to update shareholders on progress leading up to well stimulation operations."



The surface location of Tamarama-1, Tamarama-2 and Tamarama-3

Real Energy: Managing Director - Scott Brown +61 2 9955 4008

Released through: Ben Jarvis, Six Degrees Investor Relations, +61 (0) 413 150 448

Or visit the website: www.realenergy.com.au

Twitter: <https://twitter.com/RealEnergyCor>

About Real Energy Corporation

Real Energy is an oil and gas exploration and development company with a focus on the Cooper Basin, Australia's most prolific onshore producing petroleum basin. Real Energy has 100% ownership in 2 large permits in Queensland –ATP 927P & ATP1194PA.

Real Energy is focusing initially on the Toolachee and Patchawarra formations. These formations are well-known throughout the basin for holding and producing gas. Seismic interpretation in conjunction with existing petroleum well data has determined that the Toolachee and Patchawarra formations are significant across much of our acreage.