



Real Energy Corporation Limited
Level 3, 32 Walker Street North Sydney NSW 2060
Telephone 02 9955 4008

TAMARAMA-3 WELL STIMULATION COMMENCES THIS WEEK

Sydney, 25 September 2018: Cooper Basin focused oil & gas exploration company Real Energy Corporation Limited (ASX: RLE) (“Real Energy”) advises that it has mobilised equipment to site and expects to commence well stimulation of Tamarama-3 well in the next few days.

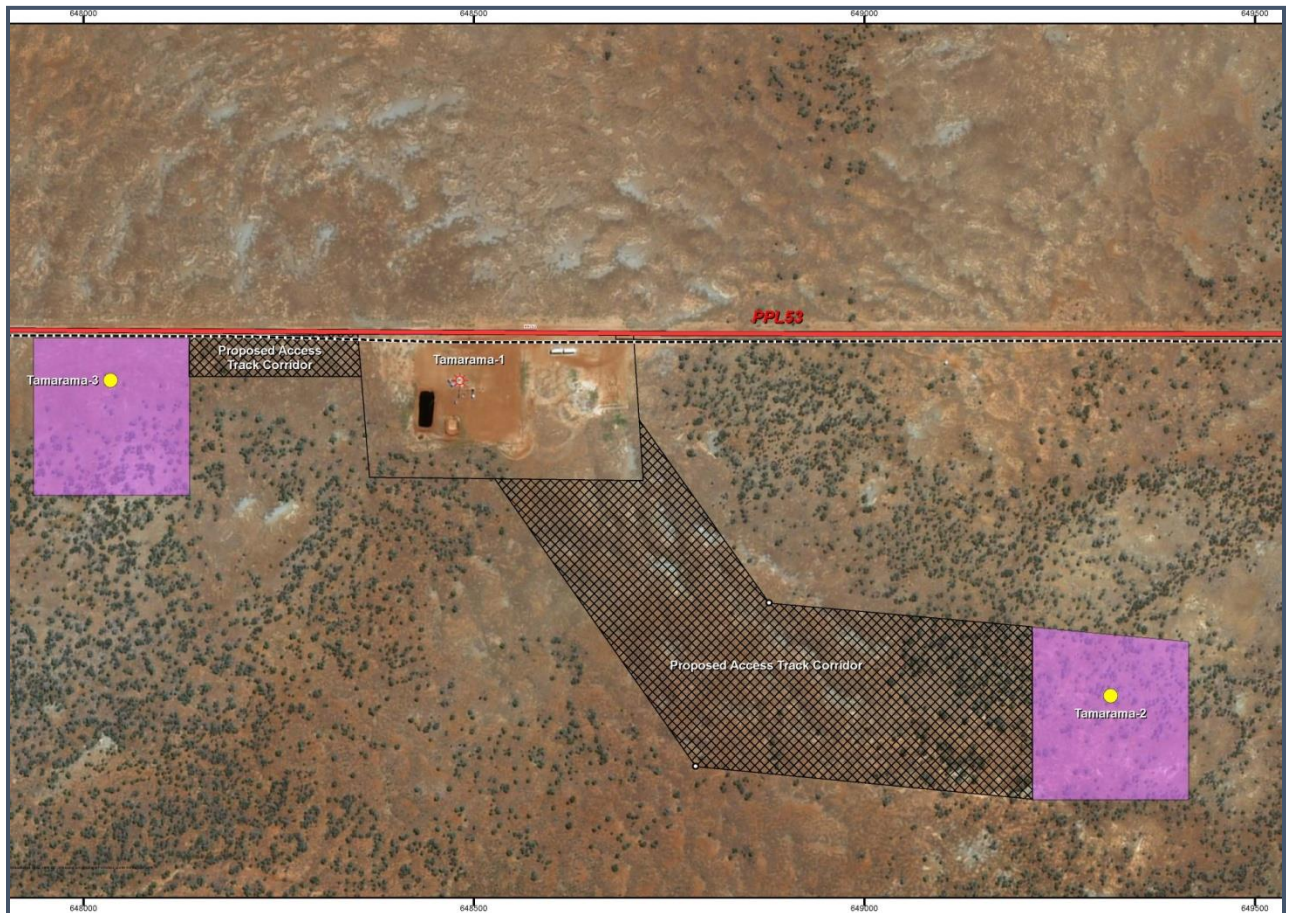
Tamarama-2 and Tamarama-3 incorporate new well designs to enable enhanced productivity through better alignment between the hydraulic fracture and the wellbore. This ‘alignment flow technology’ has been the result of extensive and ongoing research with Prof Raymond Johnson Jr at the University of Queensland to improve hydraulic fracturing designs in this area of the Cooper Basin. By better aligning the wellbore, perforations and the hydraulic fracture with the prevailing stress direction, an optimised hydraulic fracture and enhanced flow should be achievable.



Ensign Rig 964 on location.

Real Energy will conduct a four-stage fracture stimulation in Tamarama-3 in the Toolachee-Patchawarra formation sections at depths below 2,300m true vertical depth. Tamarama-2 & 3 wells were designed to prove commercial gas flow. If the wells are successful, Real Energy will look to establish pilot production out of the wells and connect flow lines so that sales gas can then be supplied into Australia's East Coast gas market.

The four-stage well stimulation program for Tamarama-3 expected to take about a week and meaningful progress and results will be reported as it comes to hand. After the well stimulation is complete for Tamarama-3 operations will move to the well stimulation for Tamarama-2.



The surface location of Tamarama-1, Tamarama-2 and Tamarama-3

Real Energy: Managing Director - Scott Brown +61 2 9955 4008.

Released through: Ben Jarvis, Six Degrees Investor Relations, +61 (0) 413 150 448

Or visit the website: www.realenergy.com.au

Twitter: <https://twitter.com/RealEnergyCor>

Geological Information

The geological information in this announcement relating to geological information and resources is based on information compiled by Mr Lan Nguyen, who is a Member of Petroleum Exploration Society of Australia, the American Association of Petroleum Geologist, and the Society of the Petroleum Engineers and has sufficient experience to qualify as a Competent Person. Mr Nguyen consents to the inclusion of the matters based on his information in the form and context in which they appear. The information related to the results of drilled petroleum wells has been sourced from the publicly available well completion reports.

About Real Energy Corporation

Real Energy is an oil and gas exploration and development company with a focus on the Cooper Basin, Australia's most prolific onshore producing petroleum basin. Real Energy has 100% ownership in 2 large permits in Queensland –ATP 927P & ATP1194PA.

Real Energy is focusing initially on the Toolachee and Patchawarra formations. These formations are well-known throughout the basin for holding and producing gas. Seismic interpretation in conjunction with existing petroleum well data has determined that the Toolachee and Patchawarra formations are significant across much of our acreage.