

4 October 2018

ASX Release

Drilling underway for Osborne JV, Cloncurry

Minotaur Exploration Ltd (ASX: MEP, "Minotaur") advises commencement of diamond drilling for the Osborne JV with JOGMEC in north-west Queensland.

Highlights

- Osborne JV is focused on greenfields discovery potential
- Exploration is targeting zinc-lead-silver and copper-gold mineralisation
- Two targets generated from recent CEI-funded EM survey
- Drilling underway to test multiple basement conductors
- Drill program underscores strong, ongoing relationship with global explorer JOGMEC

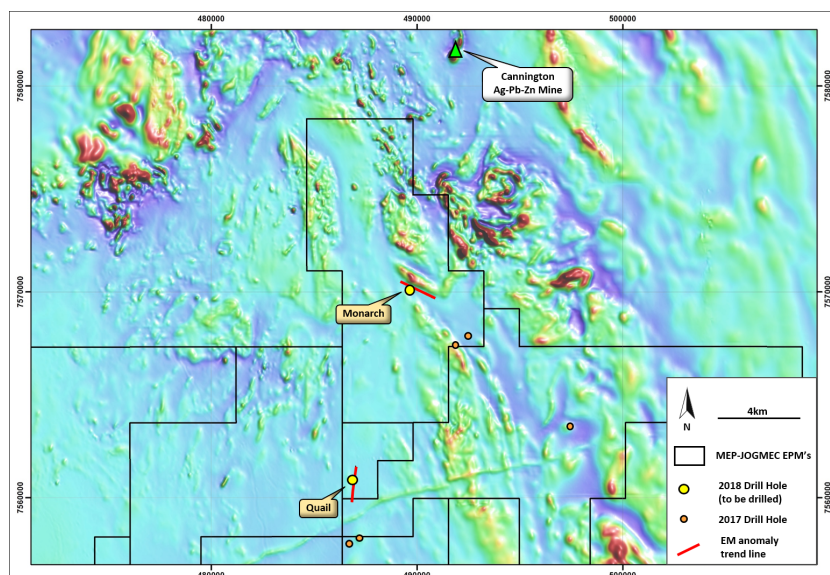
Background

The Osborne project, centred 175km south of Cloncurry, is a joint venture between Minotaur and JOGMEC (Japan Oil, Gas and Metals National Corporation). Exploration is seeking Cannington-style silver-lead-zinc and Eloise-style copper-gold mineralisation.

A Queensland Government funded CEI grant recently part-funded a systematic ground EM survey to target the southern extension of the Cloncurry Fault system for base metal mineralisation. Two EM conductive zones were defined at Monarch and Quail (Figure 1); these are now being drill tested.

A single hole will test two conductors at each site, with 800m in 2 holes through October.

Figure 1: Airborne magnetic image (TMI RTP) with EM targets and drill hole locations at Quail and Monarch



Monarch

Ground EM at Monarch defined conductors within a significant regional structure and adjacent to the southwestern margin of a magnetic high. The conductors lie within the interpreted Mt Norna Quartzite; host of many important deposits in the district. A single drillhole will test two modelled EM targets.

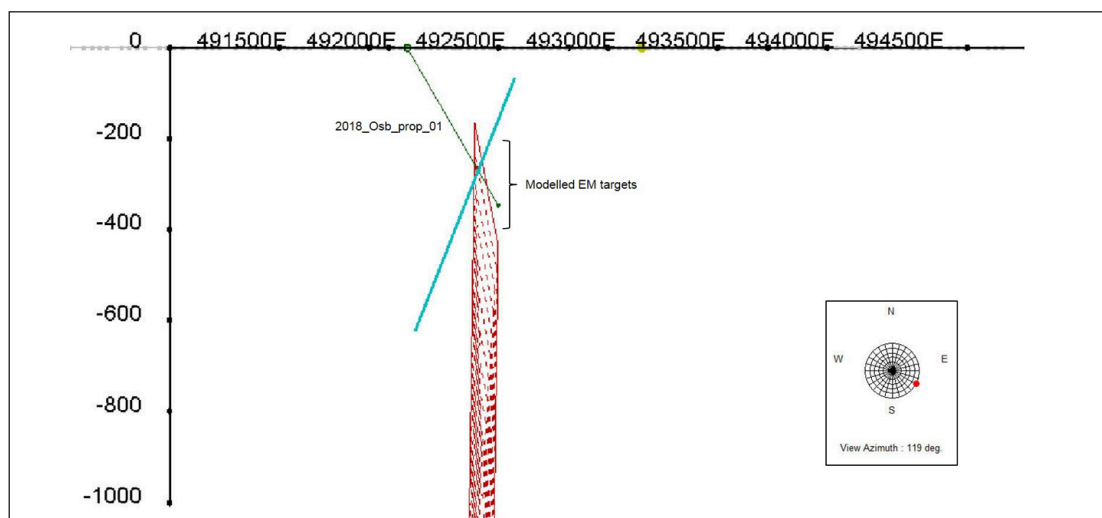


Figure 2: Drill hole to test modelled EM targets at Monarch.

Quail

Quail represents series of basement conductors defined parallel to the interpreted western margin of the Cloncurry Fault system. The area is magnetically quiet with little historic base metal drilling. Two EM conductors will be tested by a single drillhole.

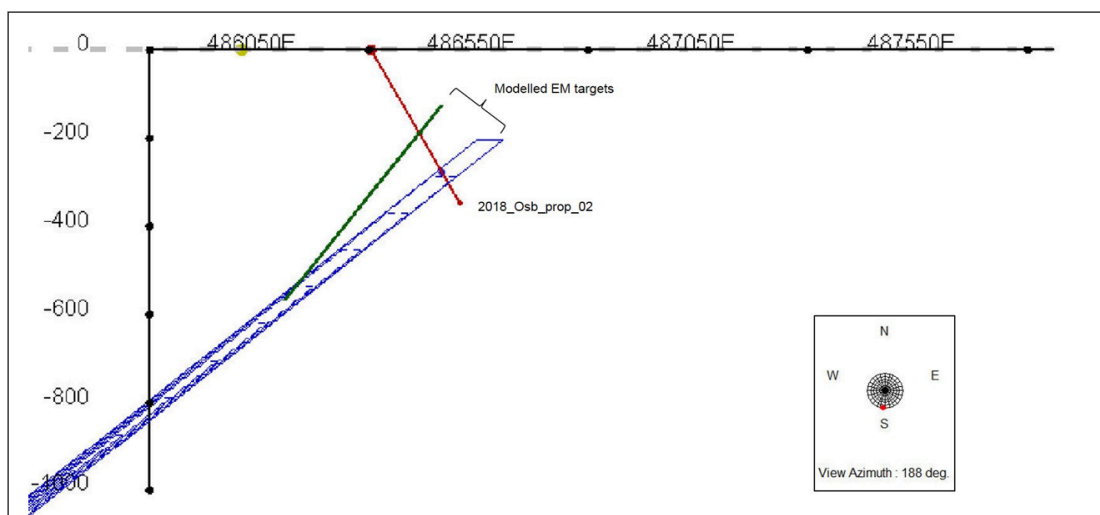


Figure 3: Drill hole to test modelled EM targets at Quail.

About the MEP – JOGMEC JV

The Osborne JV, centred 175km south of Cloncurry, is a joint venture between Minotaur (manager and operator) and Japan Oil, Gas and Metals National Corporation (JOGMEC). JOGMEC may earn up to 51% equity in the project by spending up to A\$3.5M with \$3.1M spent to date.

COMPETENT PERSON'S STATEMENT

Information in this report that relates to Exploration Results is based on information compiled by Mr. Glen Little, who is a full-time employee of the Company and a Member of the Australian Institute of Geoscientists (AIG). Mr. Little has sufficient experience relevant to the style of mineralization and type of deposit under consideration and to the activity that he is undertaking to qualify as a Competent Person as defined in the 2012 Edition of the Australasian Code for Reporting of Exploration Results, Mineral Resources and Ore Reserves (JORC Code). Mr. Little consents to inclusion in this document of the information in the form and context in which it appears.

Andrew Woskett

Managing Director

Minotaur Exploration Ltd

T +61 8 8132 3400

www.minotaurexploration.com.au