



ASX Code: SCI

Silver City Minerals Limited

Brisbane Resources Round-Up

October 2018

Important Disclaimer



This presentation is provided to you for the sole purpose of providing background technical, financial and other information to enable you to review the business activities of Silver City Minerals Limited ("Silver City", "SCI" or the "Company"). This presentation contains forward looking statements concerning Silver City Minerals Limited. Forward-looking statements are not statements of historical fact and actual events and results may differ materially from those described in the forward looking statements as a result of a variety of risks, uncertainties and other factors. Forward-looking statements are inherently subject to business, economic, competitive, political and social uncertainties and contingencies. Many factors could cause the Company's actual results to differ materially from those expressed or implied in any forward-looking information provided by the Company, or on behalf of, the Company. Such factors include, among other things, risks relating to additional funding requirements, metal prices, exploration, development and operating risks, competition, production risks, regulatory restrictions, including environmental regulation and liability and potential title disputes. Forward looking statements in this document are based on Silver City's beliefs, opinions and estimates of Silver City Minerals as of the dates the forward looking statements are made, and no obligation is assumed to update forward looking statements if these beliefs, opinions and estimates should change or to reflect other future development. Nothing in this material should be construed as the solicitation of an offer to buy or sell SCI securities.

Competent Person

Information in this document that relates to Exploration Results, Mineral Resources or Ore Reserves is based on information compiled by Christopher Torrey, who is the Managing Director and full-time employee and shareholder of Silver City Minerals Limited, and a Member of the Australian Institute of Geoscientists. Mr Torrey has sufficient experience which is relevant to the style of mineralisation and type of deposit under consideration and to the activity which he is undertaking to qualify as a Competent Person as defined in the 2012 Edition of the "Australasian Code for Reporting of Exploration Results, Mineral Resources and Ore Reserves". Mr Torrey consents to the inclusion in the report of the matters based on his information in the form and context in which it appears.

This document contains information extracted from ASX releases cited in the body of the document. These are available to view on the website www.silvercityminerals.com.au. The Company confirms that it is not aware of any new information or data that materially affects the information included in the original market announcements. The Company confirms that the form and context in which the Competent Person's findings are presented have not been materially modified from the original market announcement.

Attractive Investment Proposition



- **Broken Hill – home to worlds largest Zinc-Lead-Silver Deposit**
- **Long mining heritage – birthplace of BHP and Rio Tinto**
- **Two Key Projects**
 - *Copper Blow – Copper-Gold (Cobalt)*
 - *Razorback West – Zinc-Lead-Silver*
- **Excellent infrastructure – existing sulphide treatment mills in Broken Hill**
- **Strong copper and zinc demand**
- **Pipeline of news flow to come**

Board of Directors



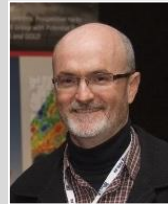
Bob Besley
Chairman

Geologist with over 40 years experience in mining and exploration. Founder and original Managing Director of CBH Resources Limited. Bob took that company from inception as a junior explorer to a large zinc, lead and silver producer with a peak market cap of \$600m. Currently Chairman of Image Resources Limited.



Chris Torrey
Managing Director

Geologist with over 35 years experience in international mineral exploration. Senior management and consulting roles with Cyprus-Amax, ASX-listed Golden Cross Resources, US-listed Golden Minerals and Apex Silver. Past Technical Director and Chairman of Golden Cross Resources.



Greg Jones
Non-Executive Director

Greg is a geologist with over 35 years exploration and mine operational experience. Senior management roles with Western Mining and Sino Gold. Former MD of Moly Mines and Executive Technical Director of Variscan Mines Limited. Greg is a non-executive director of Thomson Resources.



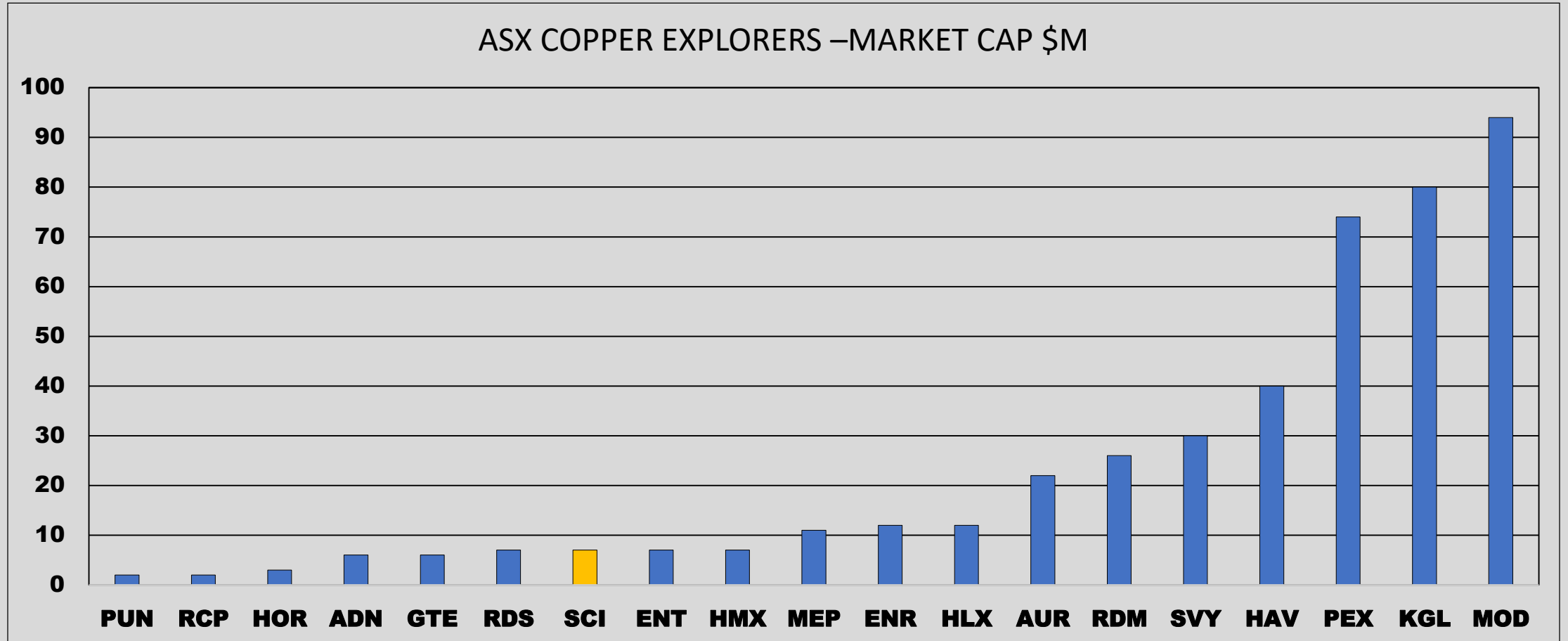
Josh Puckridge
Non-Executive Director

Josh is a Corporate Finance Executive formerly working as a specialist Equity Capital Markets Advisor for Fleming Australia, a Corporate Advisory and Funds Management firm. He has significant experience within funds management, capital raising, mergers, acquisitions and divestments of projects by companies listed on the Australian Securities Exchange.

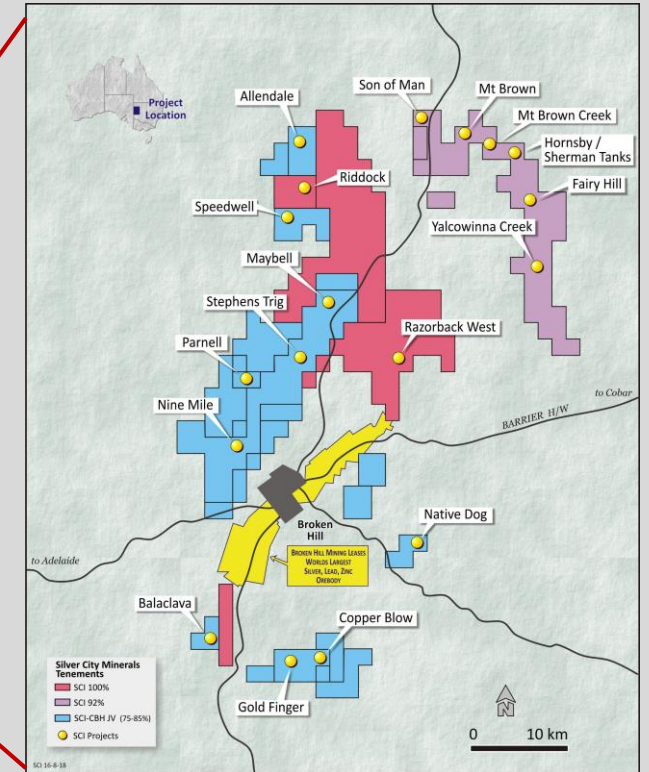
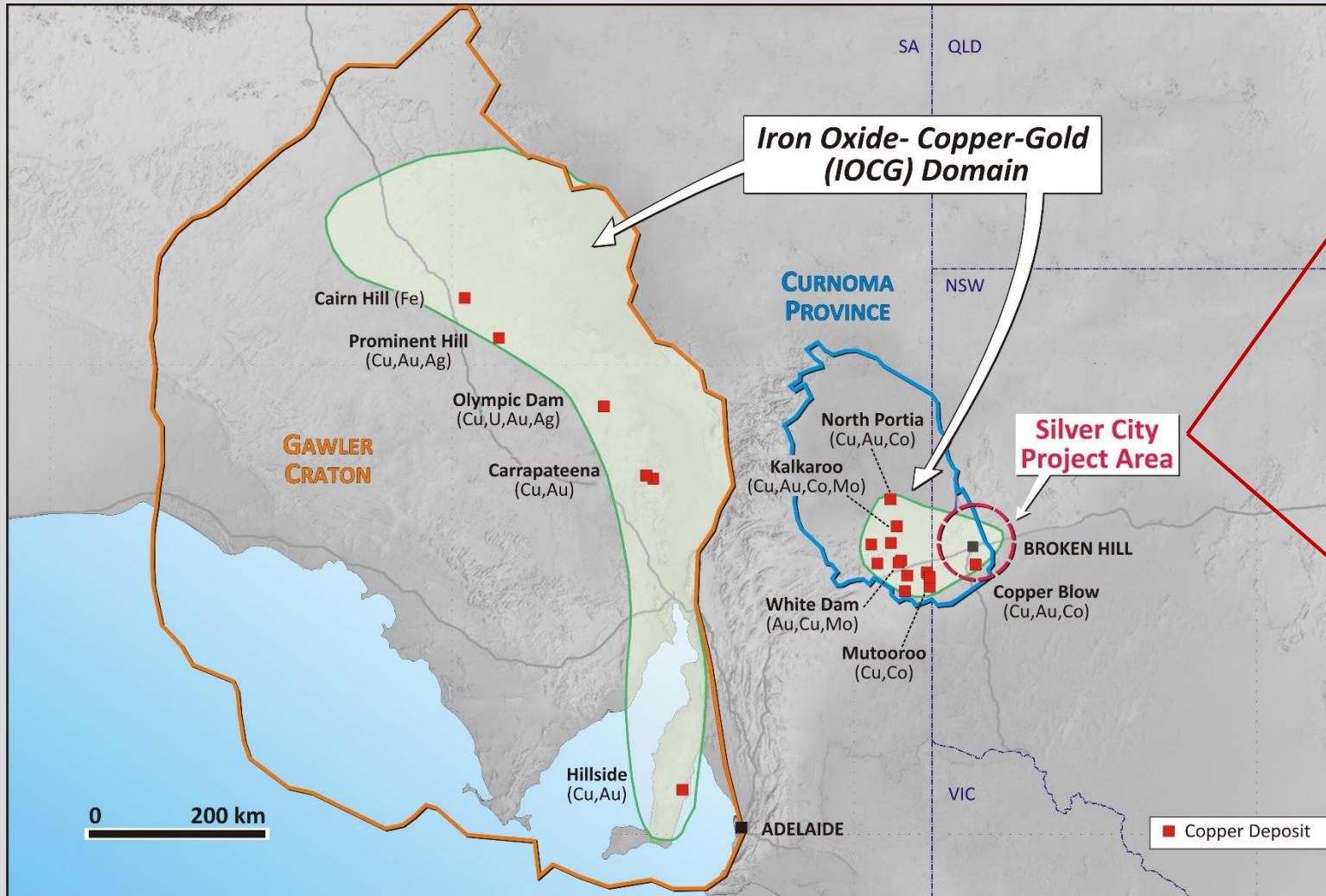
Company Snapshot

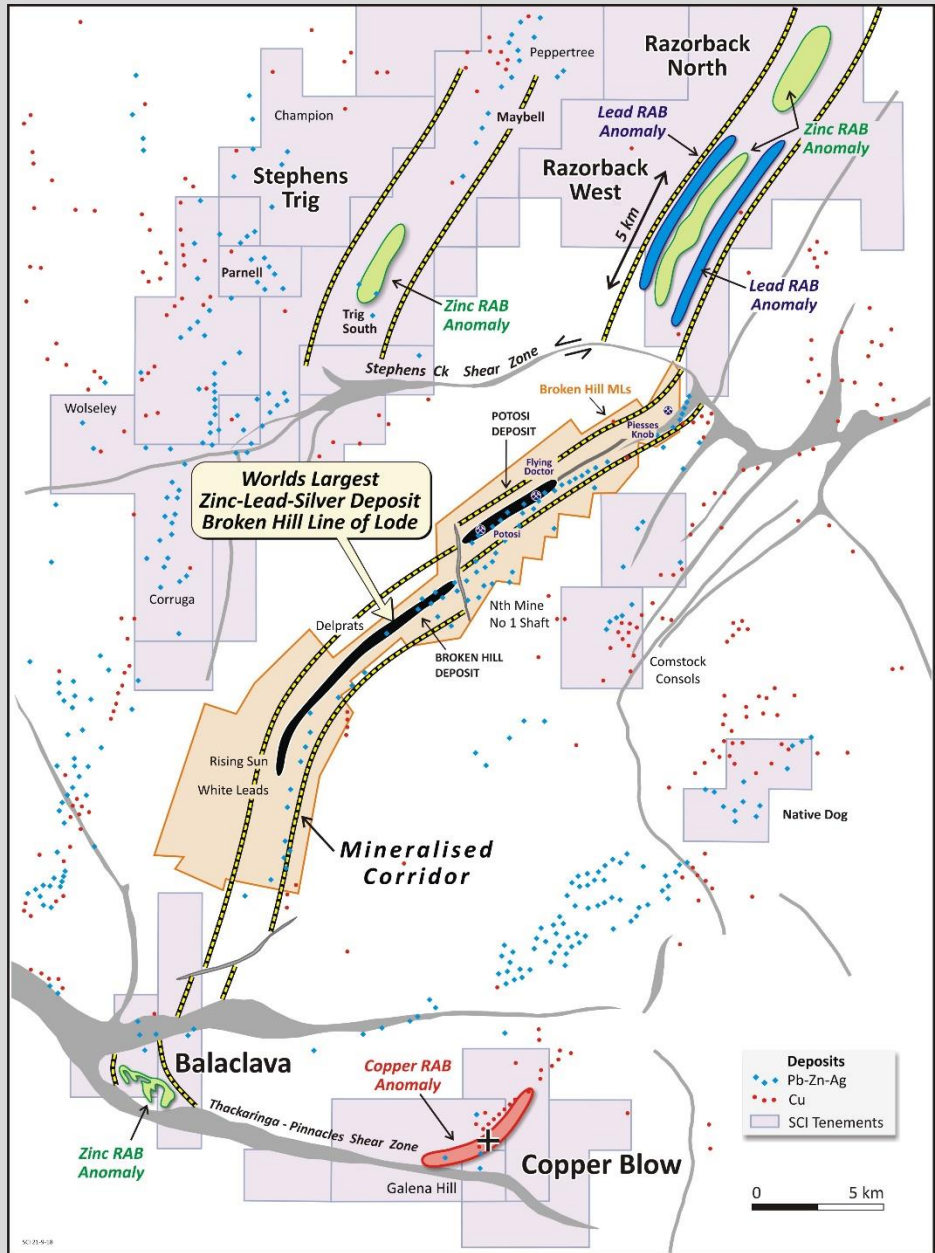


Peer Comparison



Silver City Minerals Projects



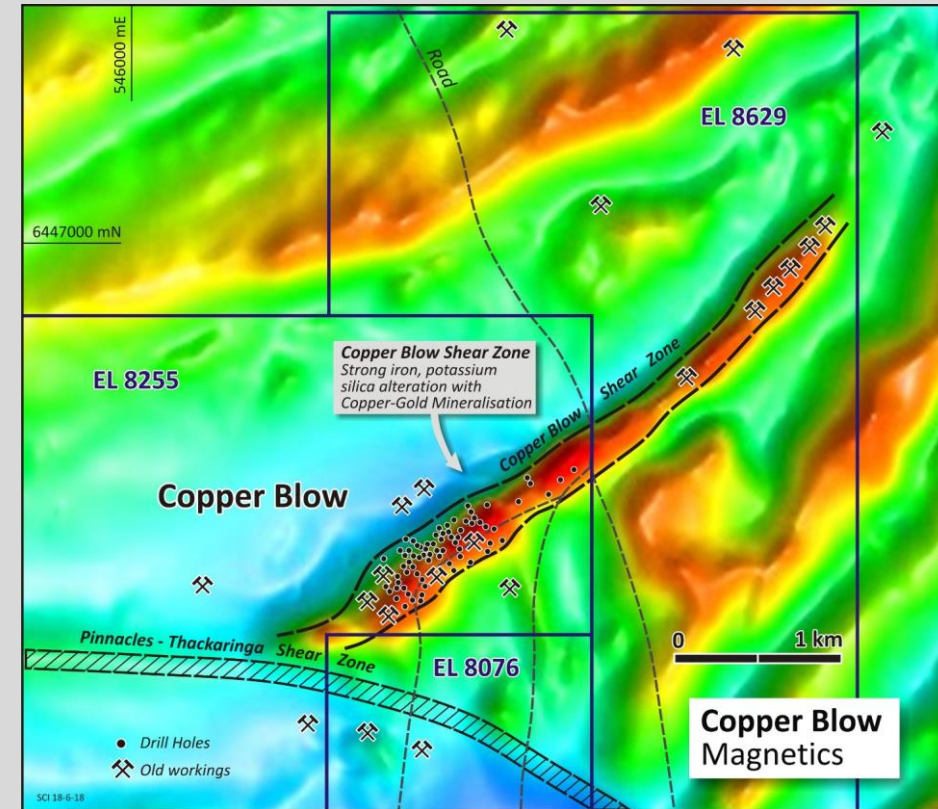


Copper Blow and Razorback West

- Copper Blow in JV with CBH Resources (75/25, SCI/CBH)
- Razorback West 100% SCI
- Both significant mineral projects, largely under cover
- Both contain mineralised drill intersections
- Both located within 20km of a sulphide treatment plants

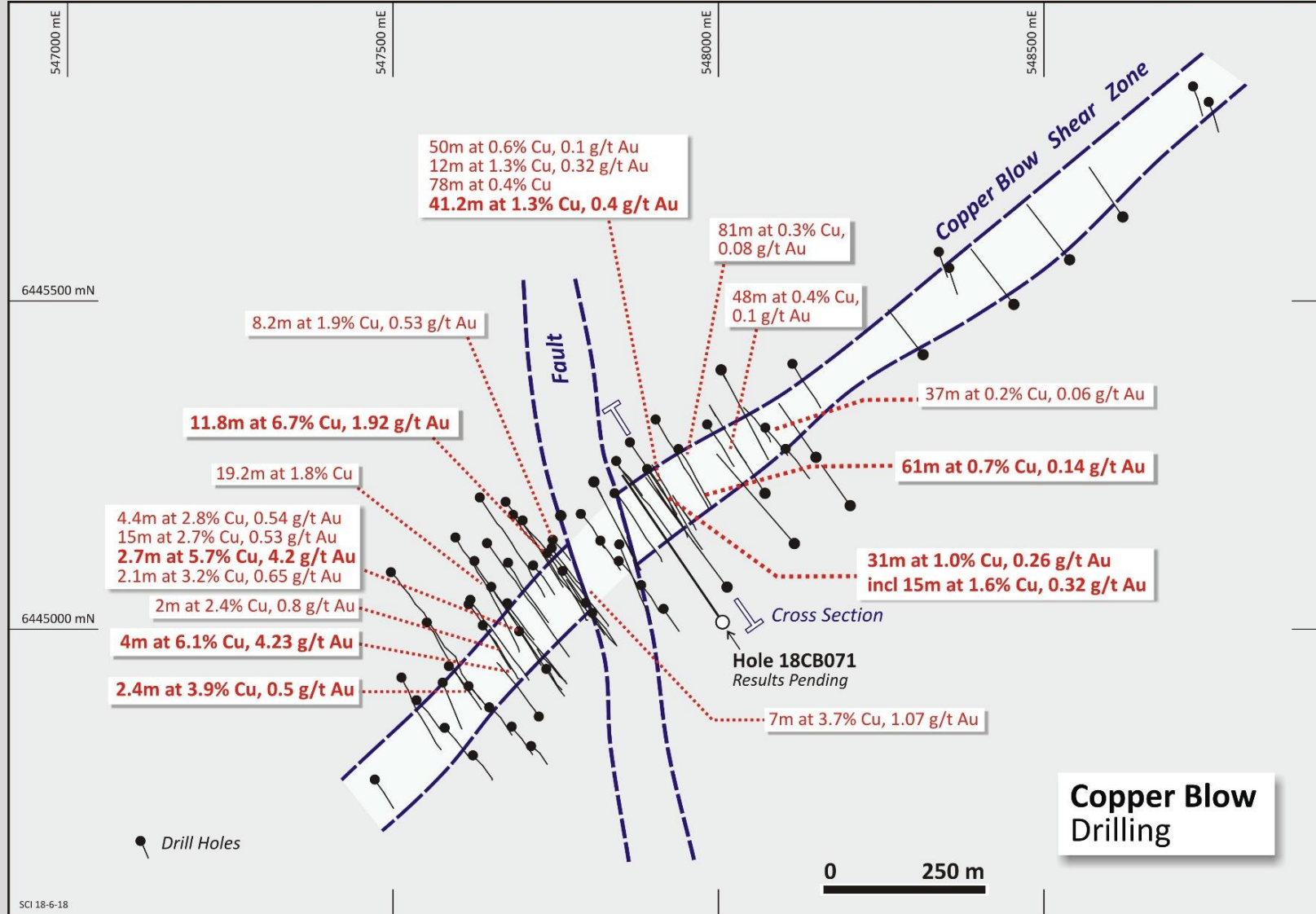
Copper Blow Key Features

- Copper-Gold (Cobalt) Project
- Iron Oxide Copper-Gold (IOCG) style
- Large intrusion-related mineral system
- Shear zone hosted and disseminated copper-gold
- 20km south of Broken Hill mining centre; excellent infrastructure
- Contributing Joint Venture with CBH Resources (SCI 75% CBH 25%)
- Two sulphide mills in Broken Hill
- Potential for open pit and underground resources
- Divided into two key zones – Copper Blow North and Copper Blow South



Copper Blow Magnetic Ironstone

Copper Blow Drilling



Copper Blow South

Multiple lode structures to 10 metres wide in shear zone

Historic holes

- 11.8 metres at 6.7% copper and 1.92 g/t gold
- 3 metres at 4.6 % copper
- 2.7 metres at 5.7% copper and 4.2 g/t gold

SCI holes

- 4 metres at 6.1% copper, 4.23 g/t Au, 13 g/t Ag and 220 ppm cobalt from 188 metres (hole 17CB041) including:
 - 1 metres at 11.3% copper, 10.7 g/t gold, 25 g/t silver and 405 ppm cobalt from 191 metres
- 8.2 metres at 1.9% copper and 0.53 g/t gold 131.8 metres (hole 17CB043)
- 2 metres at 2.4% copper, 0.8 g/t gold, 5 g/t silver from 162 metres (hole 17CB041)
- 7 metres at 3.7% copper and 1.07 g/t gold from 126 metres (hole 15CB045) including:
 - 3 metres at 7.4% copper and 2.38 g/t gold from 127 metres

Results in ASX Releases 4th May 2017, 19 June 2017 and 26 and 27 Sept 2017, 5th October 2107, 26 October, 2017, 16 November 2017, 22 February 2018.



Copper Blow North



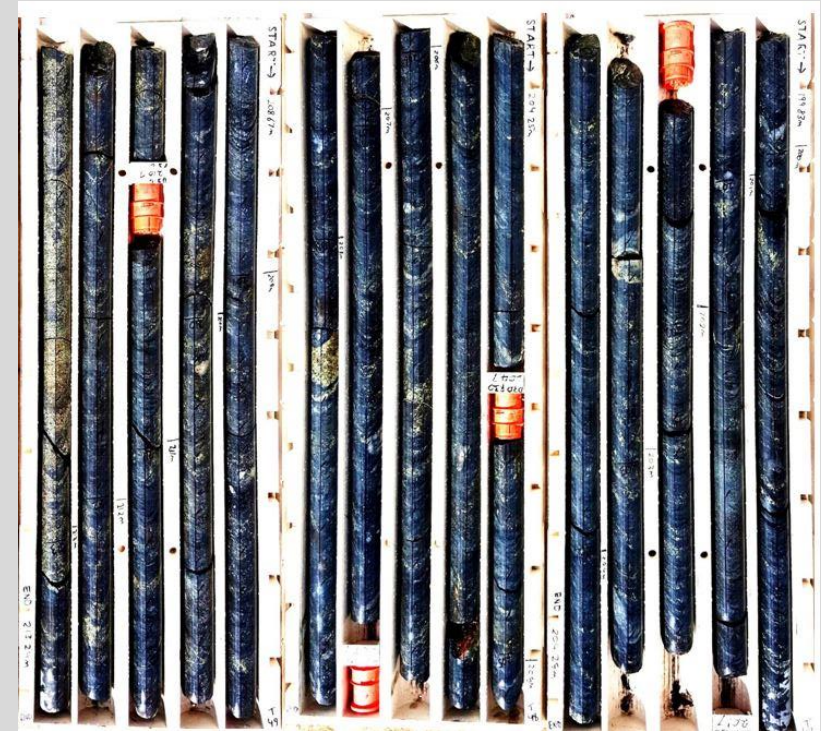
One continuous lode structure up to 60 metres wide

Historic Holes

- 86 metres at 0.6% copper and 0.14g/t gold
- 50 metres at 0.6% copper and 0.10 g/t gold
- 46 metres at 0.2% copper and 0.06 g/t gold
- 18 metres at 0.7% copper and 0.29 g/t gold

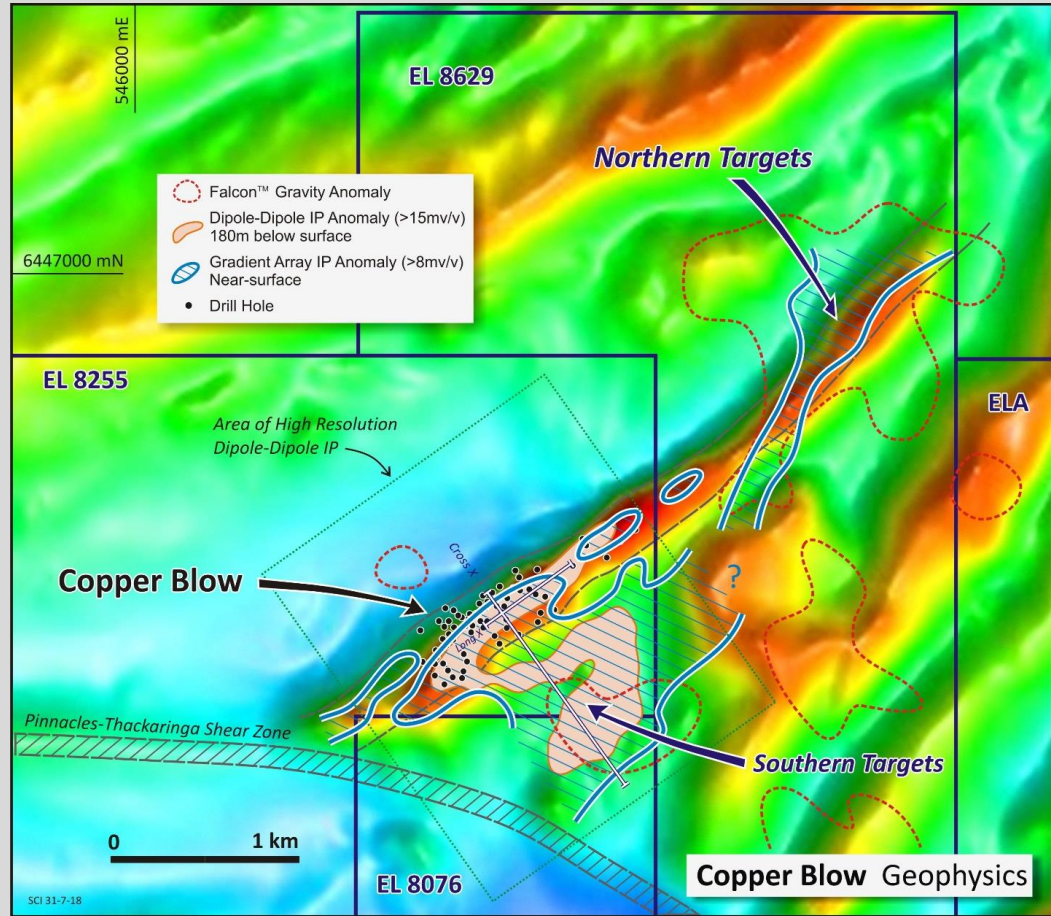
SCI holes

- 45 metres at 0.4% copper and 0.12 g/t gold from 69 metres (hole 17CB069)
- 41.2 metres at 1.3% copper and 0.40 g/t gold from 183.8 metres (hole 18CB054)
- 61 metres at 0.7% copper and 0.14 g/t gold from 184 metres (hole 18CB055)
- 31 metres at 1.0% copper and 0.26 g/t Au from 270 metres including 15 metres at 1.6% copper and 0.32 g/t gold from 285 metres (hole 18B057)
- Hole 18CB071 Deep intersection in structure (70 metres downhole) results pending

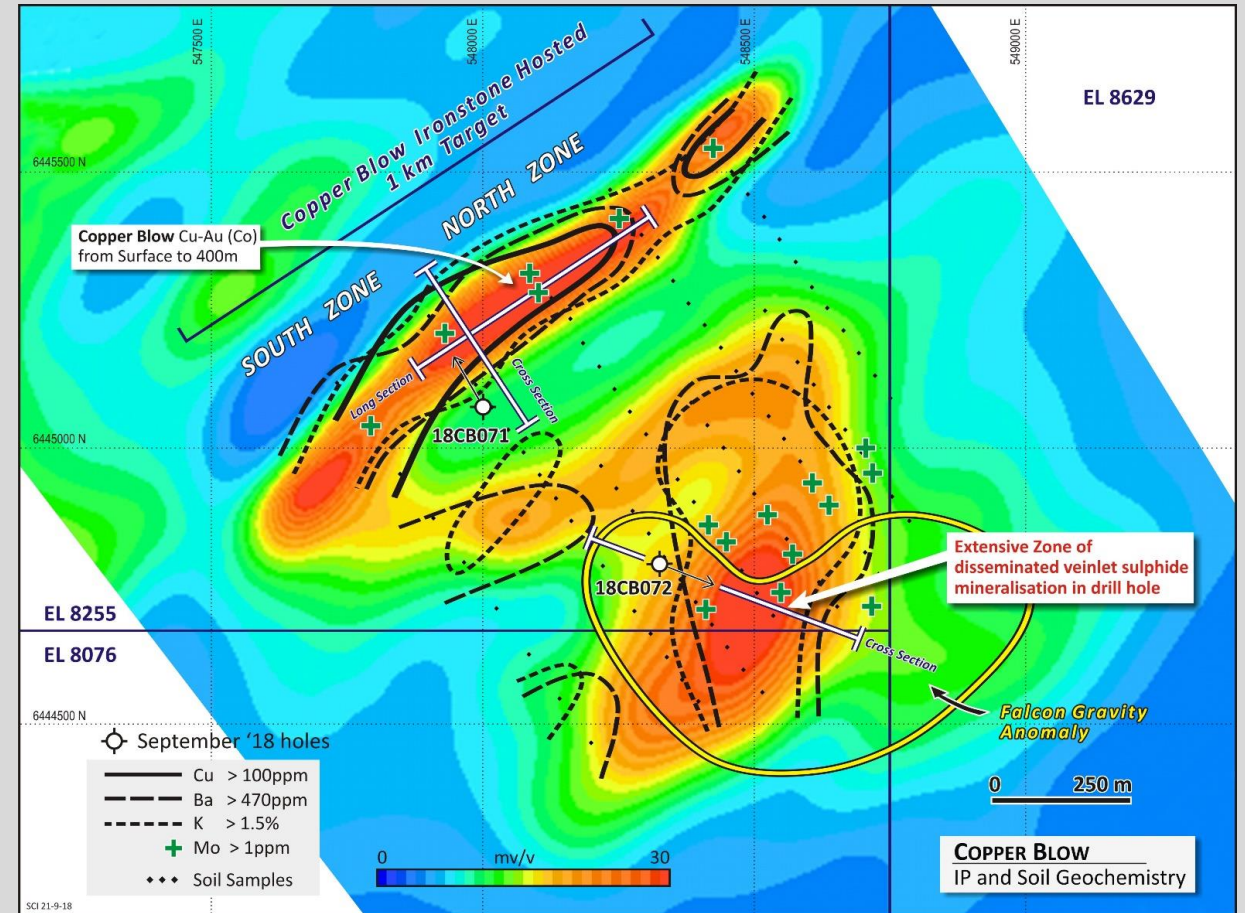


Results in ASX Releases 4th May 2017, 19 June 2017 and 26 and 27 Sept 2017, 5th October 2107, 26 October, 2017, 16 November 2017, 22 February 2018, 5 July 2018, 4 October 2018

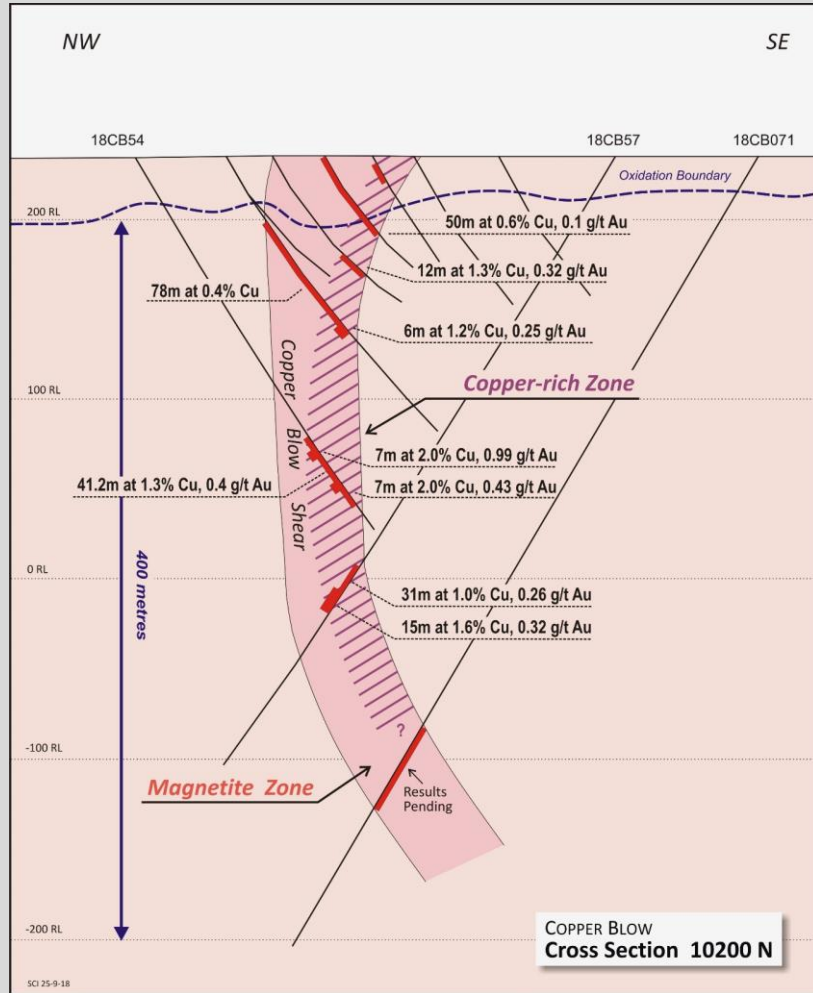
Copper Blow Geophysics



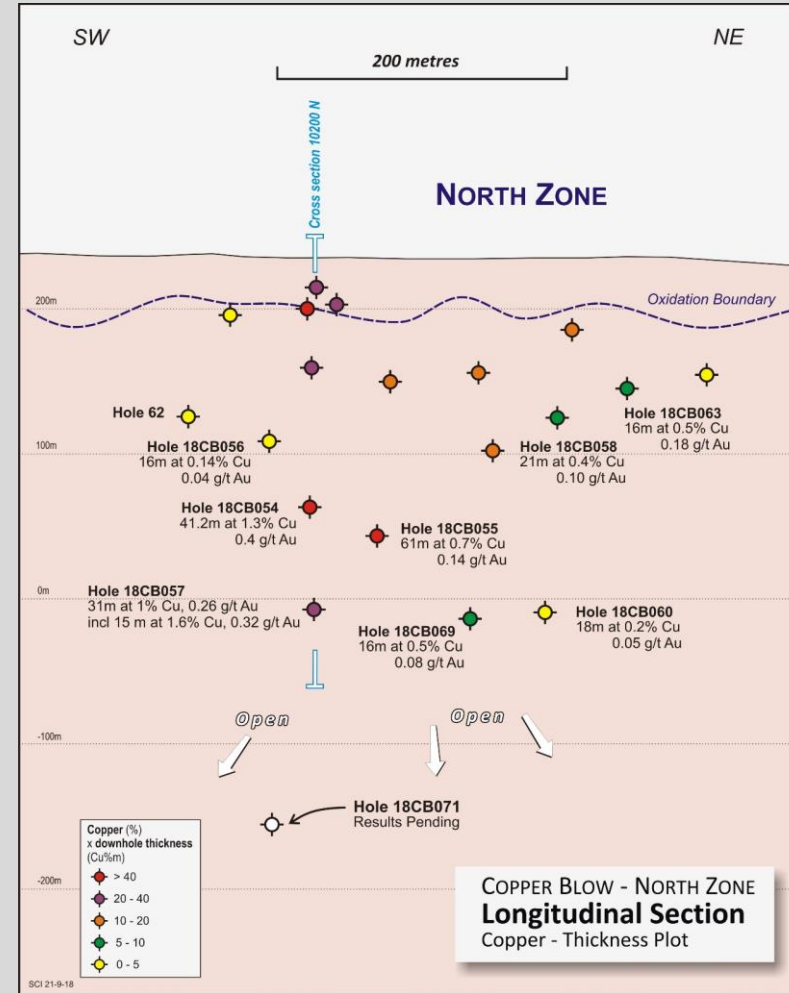
Copper Blow Dipole-Dipole IP



Cross-section North Zone

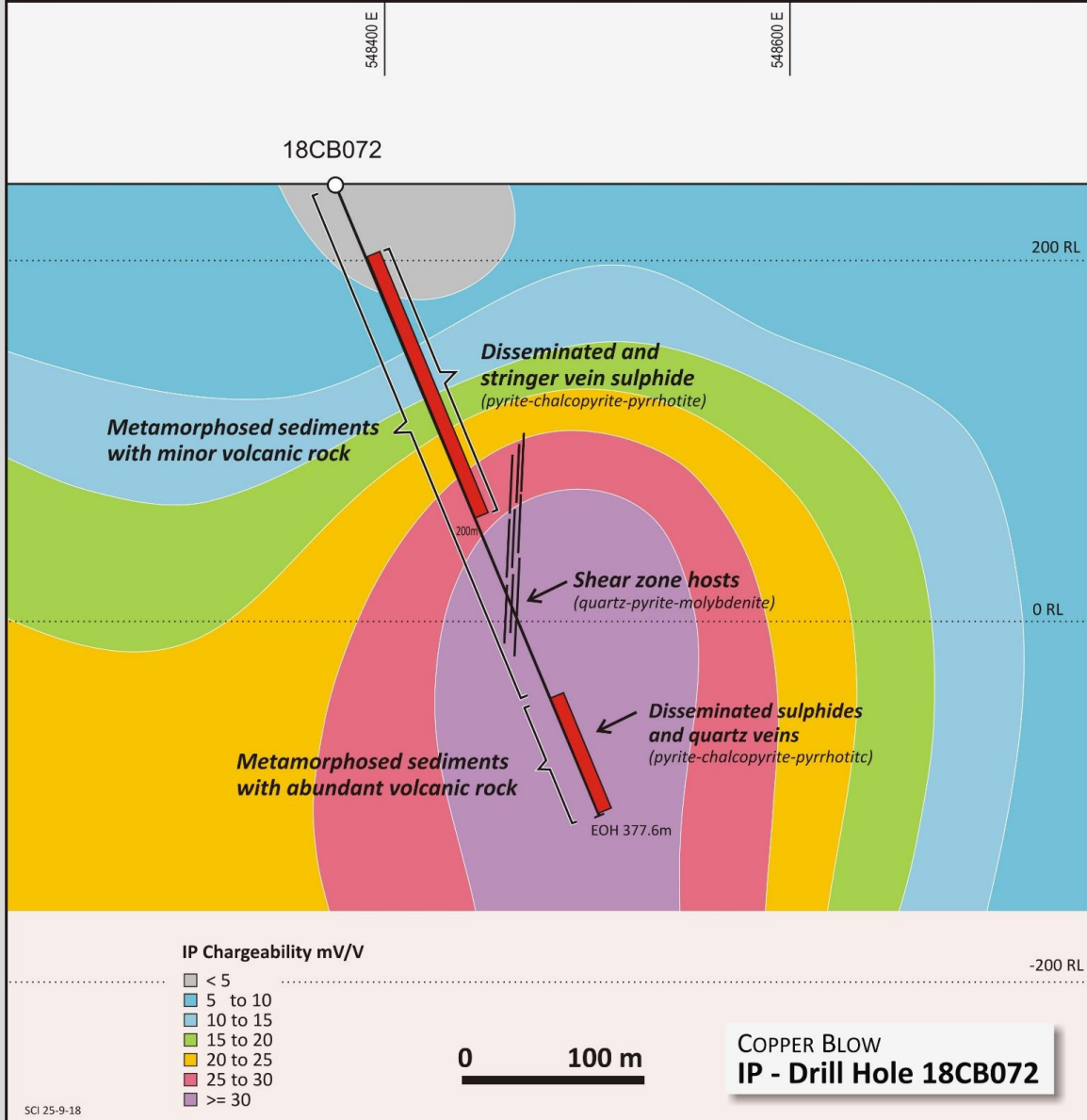


Copper-gold mineralisation from surface to approx. 400 metres depth

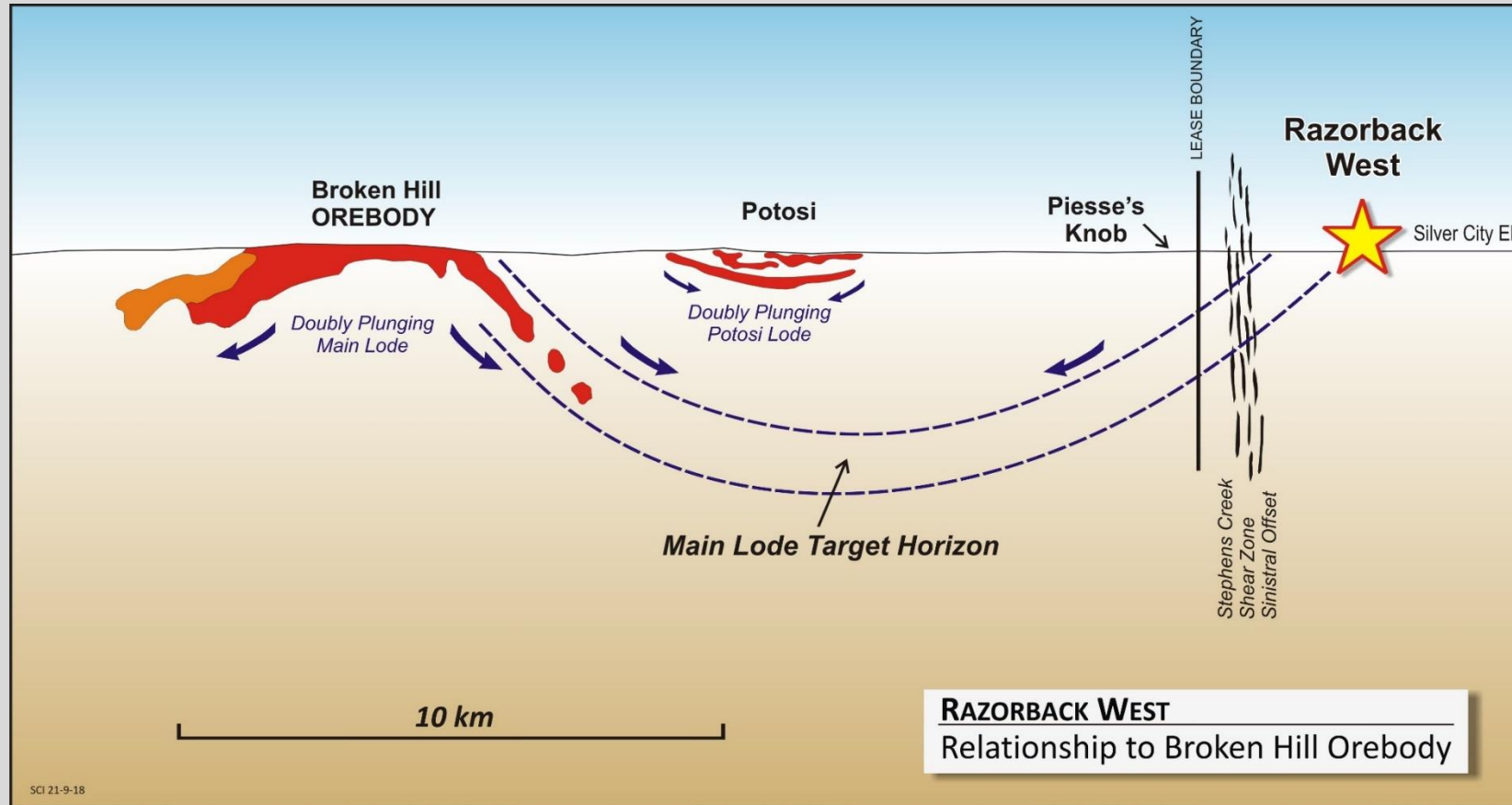


Longitudinal section north zone

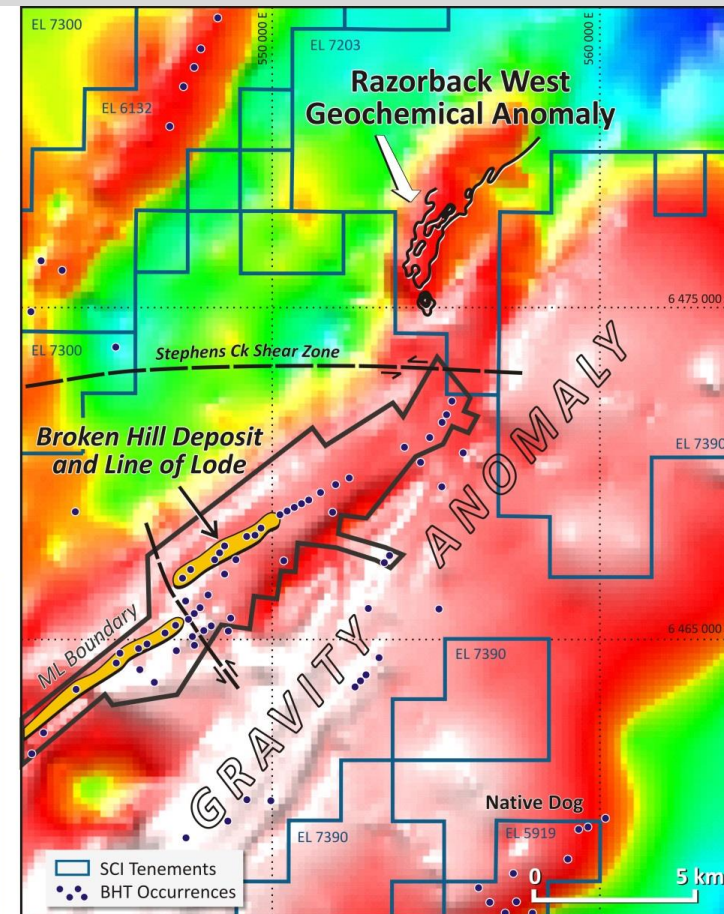
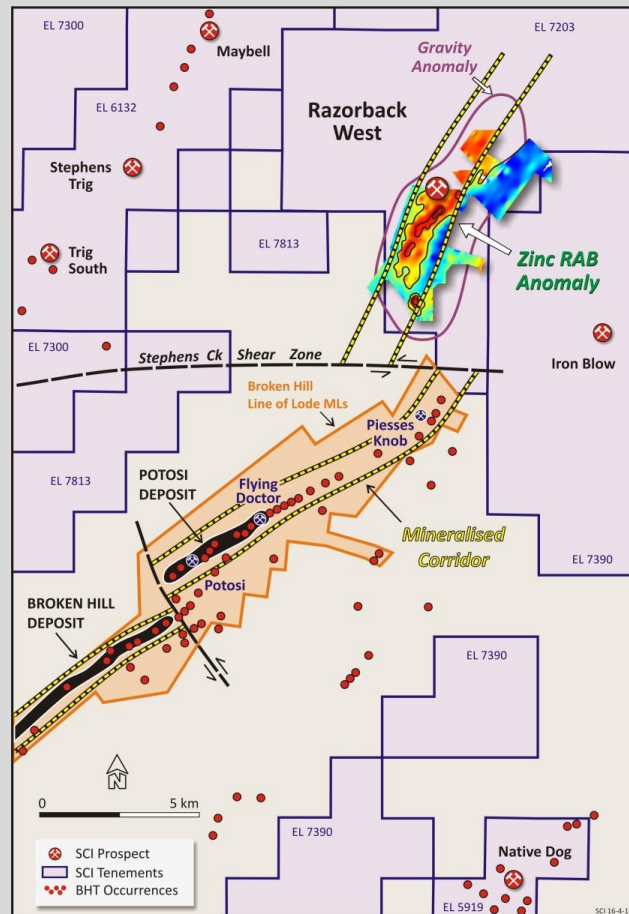
Cross-section Southern IP Anomaly



Razorback West – Key Location



Razorback West



Anticipated Milestones



Oct-Dec 2018

H1 2019

H2 2019

Copper Blow

- Ground geochemical surveys
- Geological mapping

- Continued drilling of geophysical and geochemical targets: Northern Targets(3000m)
- Step-out drilling in ironstone at Copper Blow

- Preliminary Resource Definition

Razorback West

- Surface geochemistry

- RAB and RC drilling

- Diamond Drilling





Summary

- **Company-making opportunities in Copper-Gold-(Cobalt) and Zinc**
- **Strong focus on Copper Blow (Cu-Au-Co); large IOCG mineral system**
- **Broken Hill Mining Centres:**
 - Ready access to infrastructure and workforce
 - Two operating sulphide treatment plants close by
- **Supportive JV partner (CBH Resources)**
- **SCI attractively priced with low market cap**
- **Multiple activities and milestones in next 12-months**



Contact Us

Chris Torrey

Managing Director

chris.torrey@silvercityminerals.com.au

Level 1, 80 Chandos Street

St Leonards

NSW 2065

Australia

+61 2 94371737

www.silvercityminerals.com.au

