



LITHIUMPOWER

INTERNATIONAL LTD

Global Lithium Explorer & Developer



MINERA
Salar Blanco

November, 2018



Important notice and disclaimer

This investor presentation has been prepared by Lithium Power International Limited (LPI or Company) and contains summary information about LPI and its activities as of July, 2018

Representations

No person is authorised to give any information or to make any representation in connection with Lithium Power International Limited (LPI or Company)) which is not contained in this presentation.

Any information or representation not so contained may not be relied on as having been authorised by the Company.

Not a disclosure document

This presentation does not contain the information that would be contained in a prospectus or other disclosure document prepared under the Corporations Act and does not purport to contain all the information that may be necessary or desirable to enable a potential investor to properly evaluate and consider an investment in the Company.

Presentation is not advice

The provision of this presentation is not and should not be taken as a recommendation in relation to an investment in the Company or that an investment in the Company is a suitable investment for the recipient of this presentation. This presentation does not purport to constitute any advice whatsoever, but to the extent it does, it constitutes only general advice (within the meaning of section 766B(4) of the Corporations Act) and does not take into account your individual investment objectives, financial situation or particular needs. It does not contain personal advice. The Company recommends prospective investors seek independent financial and taxation advice before making a decision as to whether or not to apply for shares.

Prospective investor to conduct own investigation and analysis

Prospective investors should carry out their own independent investigations and analysis of the Company and the information referred to in this presentation and other matters that may be relevant to it in considering whether to acquire the shares. Each prospective investor considering an investment in the shares must make, and will be taken to have made, its own independent investigation and analysis of the information provided in this presentation. Independent expert advice (including from a prospective investor's accountant, lawyer or other professional adviser) should be sought before making a decision to invest in the Company.

No responsibility for contents of presentation

To the maximum extent permitted by law, no representation, warranty or undertaking, express or implied, is made and, to the maximum extent permitted by law, no responsibility or liability is accepted by the Company and its advisers or any of their officers, employees, agents or advisers or any other person as to the adequacy, accuracy, completeness or reasonableness of the information contained in this presentation. To the maximum extent permitted by law, no responsibility for any errors or omissions whether arising out of negligence or otherwise is accepted.

Past performance

Past performance information, including past share price performance, should not be relied upon as an indication of future performance.

Projections and forecasts may not be accurate

The provision of this presentation may contain forward looking statements, which are based on subjective estimates and assumptions and about circumstances and events that have not yet taken place. Such estimates and assumptions involve significant elements of subjective judgement and analysis, which may or may not be correct. Accordingly, no representations are made by the Company, its related parties, consultants or advisers as to the accuracy of such information and there can be no assurance that any projected result would be achieved.

Investment risk

An investment in LPI shares is subject to investment and other known and unknown risks, some of which are beyond the control of the Company. LPI does not guarantee any particular rate of return or the performance of the LPI shares.

Disclaimer

This presentation may contain some references to forecasts, estimates, assumptions and other forward-looking statements. Although the company believes that its expectations, estimates and forecast outcomes are based on reasonable assumptions, it can give no assurance that they will be achieved. They may be affected by a variety of variables and changes in underlying assumptions that are subject to risk factors associated with the nature of the business, which could cause actual results to differ materially from those expressed herein. All references to dollars (\$) and cents in this presentation are to Australian currency, unless otherwise stated. Investors should make and rely upon their own enquires and assessments before deciding to acquire or deal in the Company's securities.

Competent Person's Statement

The information contained in this presentation relating to Mineral Resources has been compiled by Mr Murray Brooker. Mr Brooker is a Geologist and Hydrogeologist and is a Member of the Australian Institute of Geoscientists and has sufficient relevant experience to qualify as a competent person as defined in the 2012 edition of the Australasian Code for Reporting of Exploration Results, Mineral Resources and Ore Reserves. He is also a "Qualified Person" as defined by Canadian Securities Administrators' National Instrument 43-101. Murray Brooker consents to the inclusion in this announcement of this information in the form and context in which it appears. The Company confirms that it is not aware of any new information or data that materially affects the information included in the original market announcement. The Company confirms that the form and context in which the Competent Person's findings are presented have not been materially modified from the original market announcement.

Reference to Resource Estimate

The reader is referred to the announcement by LPI on the 12 July 2017, which provided details of the updated Maricunga project resource in accordance with Appendix 5A (JORC Code). LPI confirms that the supporting information provided in the announcement by LPI on the 12 July 2017 continues to apply and has not materially changed. The announcement of 12 July 2017 also outlines an exploration target for the Maricunga project. It must be stressed that an exploration target is not a mineral resource or reserve. The potential quantity and grade of the exploration target is conceptual in nature, and there has been insufficient exploration to define a Mineral Resource in the volume where the Exploration Target is outlined. It is uncertain if further exploration drilling will result in the determination of a Mineral Resource in this volume. The exploration target is where, based on the available geological evidence, there is the possibility of defining a mineral resource. The timing of any drilling with the objective of defining resources in the exploration target area has not been decided at this stage. In keeping with Clause 18 of the JORC Code and CIMM requirements the exploration target defined at Maricunga is based on a range of values, which represent the potential geological conditions. Values have been selected to present an upper and a lower exploration target size. It is likely that the lithium and potassium contained in the exploration target lies somewhere between the Upper and Lower Cases. The resource refers to lithium carbonate equivalent (LCE), using a conversion factor of 5.32 x lithium metal, and potassium chloride (KCl) using a conversion factor of 1.91 x potassium. A technical report to support the mineral resource estimate entitled "Lithium & Potassium Resource Estimate Maricunga Joint Venture, III Region, Chile, and dated 25 August 2017 may be accessed via this [link](#).

Cautionary note regarding reserves and resources

You should be aware that as an Australian company with securities listed on the ASX, the Company is required to report reserves and resources in Australia in accordance with the Australasian Code for Reporting of Exploration Results, Mineral Resources and Ore Reserves ("JORC Code"). You should note that while the Company's reserve and resource estimates may comply with the JORC Code, they may not comply with the relevant guidelines in other countries and, in particular, do not comply with Industry Guide 7, which governs disclosures of mineral reserves in registration statements filed with the U.S. Securities and Exchange Commission. The JORC Code differs in several significant respects from Industry Guide 7. In particular, Industry Guide 7 does not recognise classifications other than proven and probable reserves and, as a result, the SEC generally does not permit mining companies to disclose their mineral resources in SEC filings. Information contained in this presentation describing the Company's mineral deposits may not be comparable to similar information made public by U.S. companies subject to the reporting and disclosure requirements of United States securities laws. You should not assume that quantities reported as "resources" will be converted to reserves under the JORC Code or any other reporting regime or that the Company will be able to legally and economically extract them.

Lithium Power: Board

Lithium Power - Board and Technical Team



Mr David R Hannon, Chairman

LPI founding shareholder. Founding director and former Chairman of Atlas Iron Ltd which grew to over A\$3b market capitalisation. 30 year career in the finance industry with a focus on property, mining and international investing.



Mr Russell C Barwick, Non-Executive Director

Mining engineer with over 40 years of experience globally. Formerly Rio Tinto, Placer Dome, CEO of Newcrest, and COO of Goldcorp. Extensive management and technical experience globally including Latin America.



Mr Cristobal R Garcia-Huidobro, Chief Executive Officer and Managing Director - BASED IN CHILE

Civil engineer with 18 years of experience in the development and financing of mining, energy, infrastructure, finance and property projects who has led MSB's exploration and development program for the Maricunga Salar.



Mr Ricky P Fertig, Non-Executive Director

Founding director & senior executive with 30 years of international commercial experience across property, healthcare and mining services sectors.



Mr Richard A Crookes, Executive Director - Corporate Finance

Geologist with over 30 years of experience and a deep involvement in all aspects of mining projects, including exploration, mineral resource development, mine operations, environmental management, mine fleet selection, project finance and project management.



Mr Martin M Borda, Non-Executive Director - BASED IN CHILE

Economist with over 40 years of experience in a range of industries in Chile and internationally. He was a major stakeholder in the early development stages of the Maricunga Lithium Brine Project.



Mr Andrew G Phillips, CFO and Company Secretary

Over 25 years of commercial & financial experience. Previous senior management roles with Aristocrat, Allianz, Hoya Lens, and Sequoia, with additional Board experience in the small cap resources sector.

Lithium Power: Technical Committee

Andres Lafuente – Chief Operating Officer

Senior Executive with 24 years of experience in Financial & Infrastructure companies. Previously GM for Scotia Bank in Chile, and Corporate Manager and Compliance for Euroamerica Financial & Life Insurance.

Tarek Halasa – Chief Development Officer

Civil Engineer with 17 years of international experience, specialising in project & cost management, feasibility studies, and sub-contractor management. Previously held the role of Construction Coordinator for Bechtel for the past 8 years, working on projects for BHP, Xstrata, Anglo, and BP.

Frederick Reidel – QP under TSX NI 43-101

Hydrogeologist with 25 years of experience in water, lithium brine and infrastructure projects in North & South America. Undertook the reserve evaluation & feasibility study for Orocobre at the Olaroz lithium brine project. Technical advisor to Lithium Americas on the Cauchari lithium brine project. Participated in the initial resource evaluation for FMC's Hombre Muerto lithium brine project.

Peter Ehren – QP under TSX NI 43-101

Independent consultant and industry expert in development processes and technical & economic assessment for new brine projects, especially relating to lithium and potassium. Currently also consulting to Orocobre on the Olaroz project. Previously designed & evaluated projects in Chile, Argentina, China, and Australia.

Carlos Espinoza

Current Associate Professor of University of Chile with extensive experience in hydrogeological simulation and modelling, baseline studies, evaluation of environmental impact studies and water resources, and evaporation well simulation (Salar de Atacama).

Hugo Barrientos Ruiz

Over 30 years of experience as Mechanical Engineer with an extended background in leading companies such as SQM. Former Engineer Project Manager at Lithium Americas.

Murray Brooker – QP/CP under TSX NI 43-101/JORC

Independent consultant and hydrogeologist specialising in lithium brine over the last 8 years, with 25 years of total experience in mining and exploration. Areas of expertise include: project management, project evaluation & feasibility, and geological interpretation & reporting. Has previously led teams in Chile, Argentina, and Australia. Was the JORC Competent Person to Orocobre on their Olaroz lithium brine project.

Chile's next low-cost lithium producer

MARICUNGA RESOURCE

2.15mt LCE¹
5.7mt KCl²

HIGH GRADE

1,160mg/l Li
8,500mg/l K

DFS (WorleyParsons)

Targeted Release – 4Q18

¹ Lithium Carbonate Equivalent

² Potassium Chloride

Research Coverage

Canaccord Genuity	Reg Spencer
Hallgarten & Company	Christopher Ecclestone
TSI	Adam Kiley

Capital Structure

ASX Code	LPI
Shares on Issue	262.5M
Share price ¹	AU\$0.290
Market Capitalisation	AU\$76.13M
Cash @ bank	– LPI Circa AU\$21.4M – Chilean JV Circa US\$1.8M
Listed Options exercise price – 55 cps ²	34.6 M (A\$19M)
Unlisted Options exercise price – 25 cps ³ (average)	36.3 M (A\$9.08M)

¹ Closing share price as at close November 12th, 2018

² LPIOA expiry July 6th, 2019

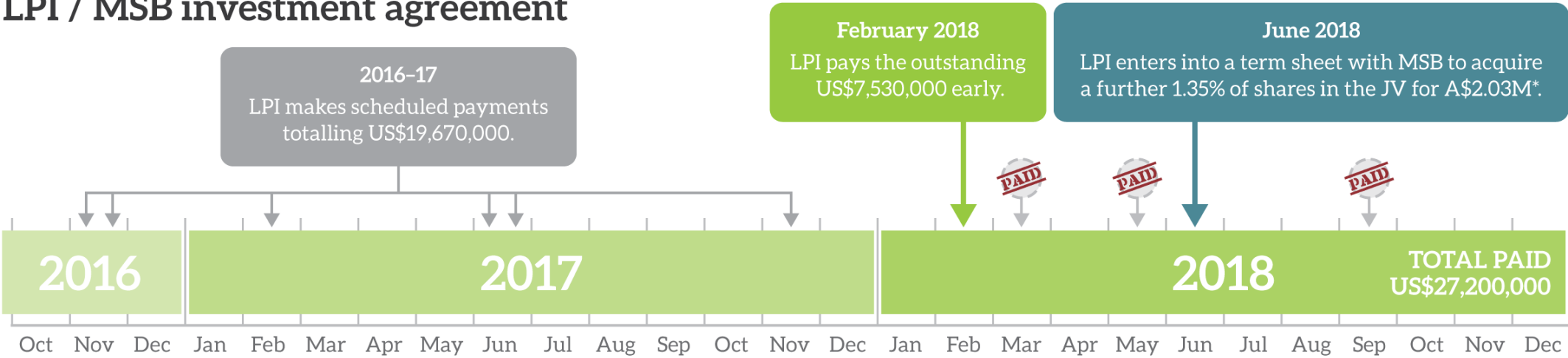
³ Majority of Unlisted options expiry June 23rd, 2021 (majority held by founders)

Substantial Shareholders (As at November 12th, 2018)

FOUNDERS & DIRECTORS	23.7%
CHILEAN JOINT VENTURE PARTNER	6.1%
MORGAN STANLEY AUSTRALIA SECURITIES PTY LTD	3.4%
YARANDI INVESTMENTS PTY LTD	3.2%
DM CAPITAL MANAGEMENT PTY LTD	3.1%
G HARVEY NOMINEES PTY LTD	2.5%
BRISPOT NOMINEES PTY LTD	2.1%
J P MORGAN NOMINEES AUSTRALIA LIMITED	2.0%
HSBC CUSTODY NOMINEES (AUSTRALIA) LIMITED	2.0%

Increasing LPI's ownership of MSB

LPI / MSB investment agreement



Maricunga: a high-quality asset

- ✓ **Located within the “Lithium Triangle”** – home to the largest and highest quality lithium brine deposits.
- ✓ **The highest quality pre-production lithium brine project** in South America in terms of lithium grade, size and aquifer characteristics.
- ✓ **The most advanced pre-production lithium** project in Chile.
- ✓ **100% owned by the JV** and not subject to leasehold related negotiations impacting other Chilean operators.

2017 JORC and Ni43-101 Resource Estimate

- ✓ **2.15 Mt LCE** and **5.7 Mt KCI**
- ✓ One of the worlds highest-grade lithium brine resources at **1,160 mg/l lithium** and **8,500 mg/l potassium**
- ✓ 80% Measured and Indicated: **1.7 Mt LCE** and **4.5 Mt KCI**
- ✓ 20% Inferred: **0.45 Mt LCE** and **1.2 Mt KCI**
- ✓ Exploration target **upper case scenario 2.5 Mt LCE**



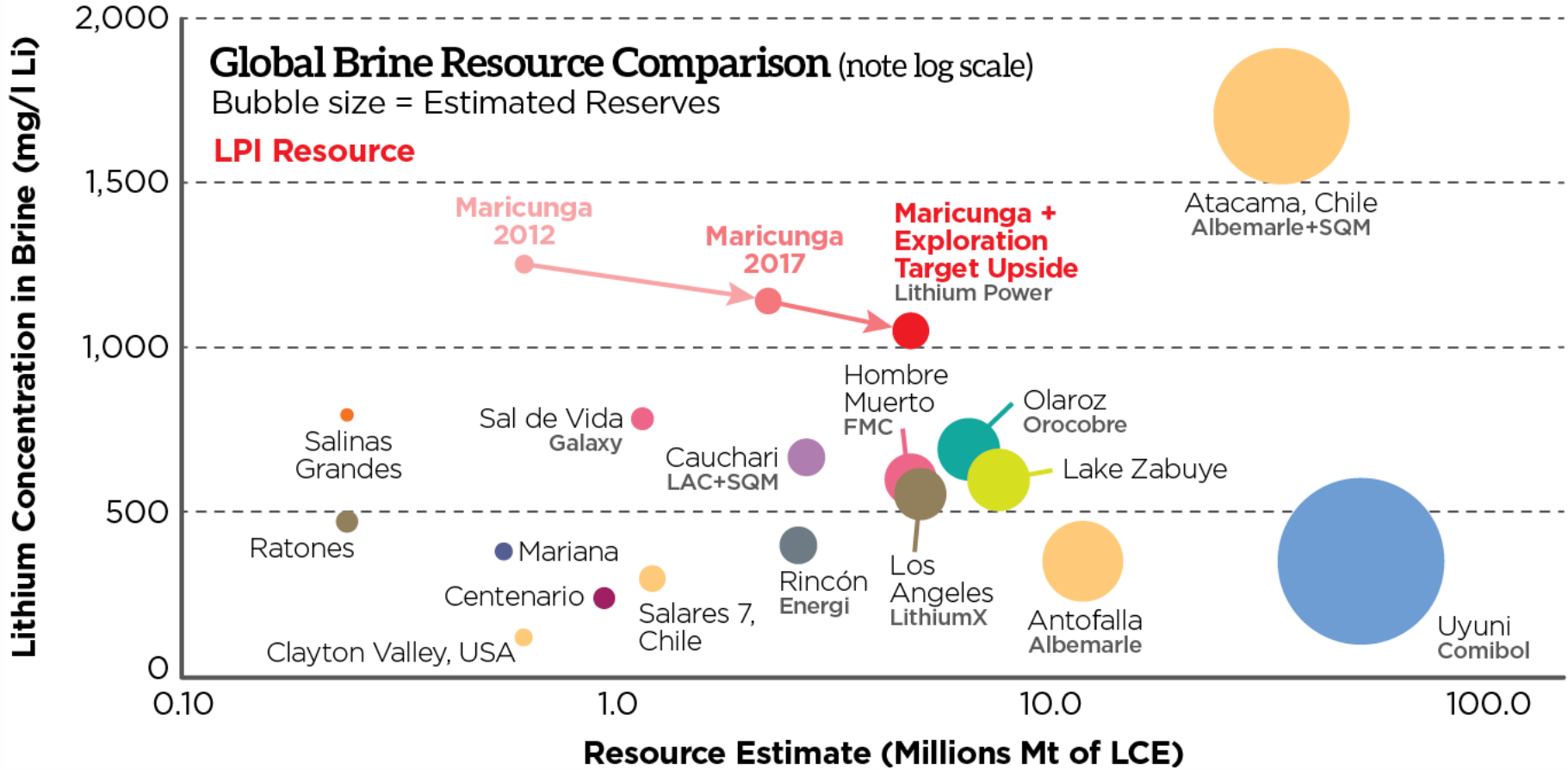
Lithium Power: a compelling investment opportunity

- ✓ **Test work has produced the first battery grade Li_2CO_3 samples, meeting commercial high quality specifications.**
 - ✓ Preliminary Economic Assessment (PEA) by WorleyParsons completed in Dec 2017 indicates Maricunga to be **a low-cost lithium producer with short payback and a long mine life.**
 - ✓ Definite Feasibility study targeted for end of 4Q18.
 - ✓ Optimization of lithium extraction and potassium production to develop the **lowest cost process with highest possible recoveries.**
 - ✓ **Port and logistics assessment fully completed.**
-
- ✓ **LPI received an award by the Australian Embassy** for being the company with the largest investment in the lithium sector in Chile.



Site visit of key market analysts – October 2017

Maricunga: a globally significant lithium resource



Source: Albemarle investor presentation modified by LPI

**MARICUNGA
RESOURCE**

2.15 Mt LCE¹
5.7 Mt KCl²

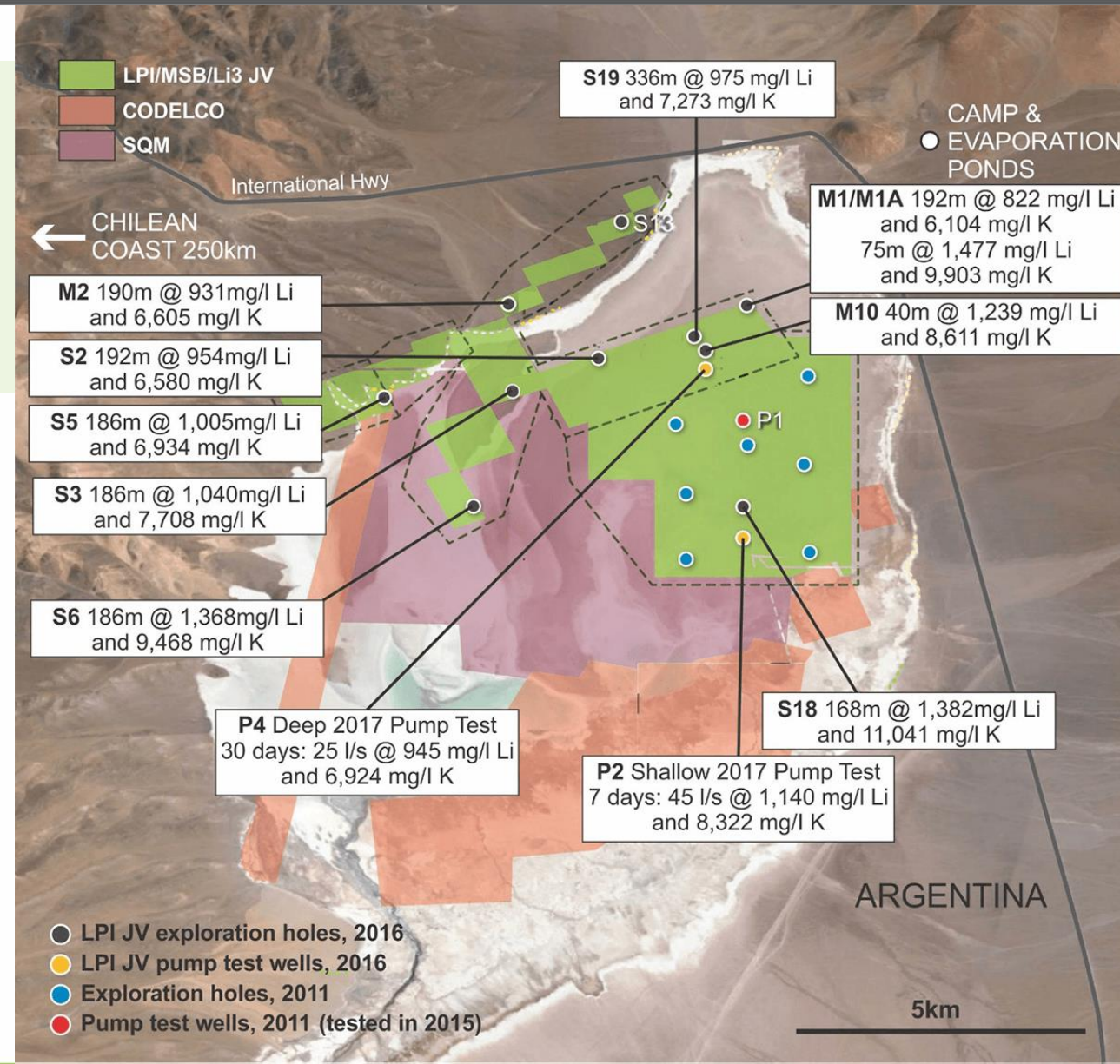
**HIGH
GRADE**

1,160mg/l Li
8,500mg/l K

The world's second-highest lithium grades

- ✓ Extensive Sonic and RC drilling results averaged **1,160 mg/l Li** and **8,500 mg/l K**
- ✓ 360m Deeper drilling a **“game changer”** for expanding the resource
- ✓ Deep hole S19 intersected a 336m interval at **975mg/l Li** and **7,273mg/l K** and remains open at depth.

Hole	Depth (m)	Interval (m)	Li (mg/l)	K (mg/l)
M10	200	40	1239	8611
M1	77	66	1,447	9,903
M2	198	190	931	6,605
S5	200	186	1,005	6,934
S3	200	186	1,040	7,708
S13	200	186	999	7,294
S6	200	186	1,368	9,498
M1A	200	192	822	6,104
S2	200	192	954	6,580
S18	173	168	1,382	11,041
S19	360	336	975	7,273
S20	40	N/A	N/A	N/A

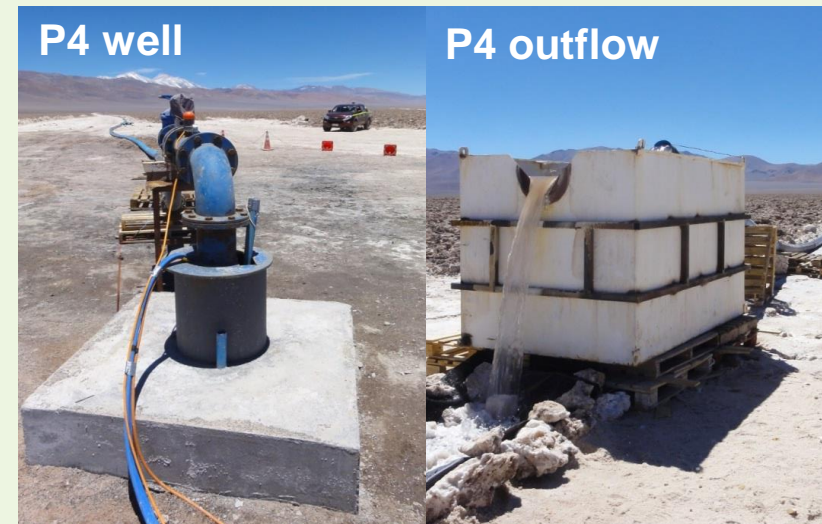


High drainable porosity and permeability

- ✓ Halite, gravel, sand and volcanoclastic sediments have **excellent drainable porosity and permeability** characteristics
- ✓ Deep well (P4) flowed at an average rate of **25 l/s** and average grade of **945mg/l Li** and **6,924mg/l K** from the gravel and volcanoclastic sediments over a 30 day test period
- ✓ The upper halite in well P2 flowed at **45 l/s**, with average grade of **1,140mg/l Li** and **8,322mg/l K** over a 7 day test period
- ✓ **Pumping confirms the high flow rate characteristics** of the sediments, which have a high permeability and allows pumping at a high flow rate: **very positive for long term brine extraction from the salar**
- ✓ Flow rates are **comparable to those of major lithium brine producers**

Geological Model	Drainable Porosity
Upper Halite	6.5%
Clay Core	2.2%
Deep Halite	5.3%
Alluvial NW	14.8%
Lower Alluvial	6.3%
Lower Sand	6.0%
Upper Volcanoclastic	10.3%
Lower Volcanoclastic	10.3%

Average drainable porosity values from laboratory test work



2017 JORC and NI 43-101 mineral resource estimate and exploration target

MARICUNGA RESOURCE ESTIMATE

	Measured		Indicated		Inferred		M&I		Total Resource	
Area km ²	18.88		6.76		14.38 ¹		25.64		25.64	
Aquifer volume km ³	3.06		1.35		0.72		4.41		5.13	
Brine volume km ³	0.15		0.14		0.06		0.30		0.36	
Mean drainable porosity % (Specific yield)	5.02		10.65		8.99		6.75		7.06	
Element	Li	K	Li	K	Li	K	Li	K	Li	K
Mean grade g/m ³ of aquifer	56	409	114	801	114	869	74	529	79	577
Mean concentration mg/l	1,174	8,646	1,071	7,491	1,289	9,859	1,143	8,292	1,163	8,512
Resource tonnes	170,000	1,250,000	155,000	1,100,000	80,000	630,000	325,000	2,235,000	405,000	2,980,000
Lithium Carbonate Equivalent tonnes	900,000		820,000		430,000		1,720,000		2,150,000	
Potassium Chloride tonnes	2,400,000		2,100,000		1,200,000		4,500,000		5,700,000	

Lithium is converted to lithium carbonate (Li₂CO₃) with a conversion factor of 5.32. Values may not add due to rounding. No cut-off grade is applied in the resource. Potassium is converted to potassium chloride (KCl) with a conversion factor of 1.91. ¹ Inferred underlies the Measured in the Lito properties

MARICUNGA EXPLORATION TARGET ESTIMATE

Subarea	Area km ²	Thickness m	Mean drainable porosity %	Brine volume million m ³	Li Concentration mg/l	Contained Li tonnes	LCE tonnes	K Concentration mg/l	Contained K tonnes	KCl tonnes
UPPER RANGE SCENARIO										
Western	4.23	100	10%	42.3	1,000	40,000	200,000	6,500	270,000	500,000
Central	21.41	200	10%	428.0	1,000	430,000	2,300,000	7,500	3,200,000	6,100,000
	Continues from directly below the resource					470,000	2,500,000		3,470,000	6,600,000
LOWER RANGE SCENARIO										
Western	4.23	100	6%	25.4	600	15,000	80,000	5,000	130,000	240,000
Central	21.41	200	6%	257.0	700	180,000	950,000	5,500	1,400,000	2,700,000
	Continues from directly below the resource					195,000	1,030,000		1,530,000	2,940,000

Lithium is converted to lithium carbonate (Li₂CO₃) with a conversion factor of 5.32. Values may not add due to rounding. Potassium is converted to potassium chloride (KCl) with a conversion factor of 1.91

PEA: outstanding economics



WorleyParsons
resources & energy



Production

20,000 t/a LCE & 74,000 t/a KCI
over 20 years

Pre-tax NPV(8%)

US\$ 1.049B

Project Operating Cost

US\$ 2,938/t
reducing to **US\$2,635/t** with KCI byproduct credits.

Ungearred IRR

23.4%

Project Development Cost

US\$ 366M
LPI's 51% share **US\$183M**; excludes KCI (US\$23M), indirect costs (US\$55M) and (US\$83M) contingency.

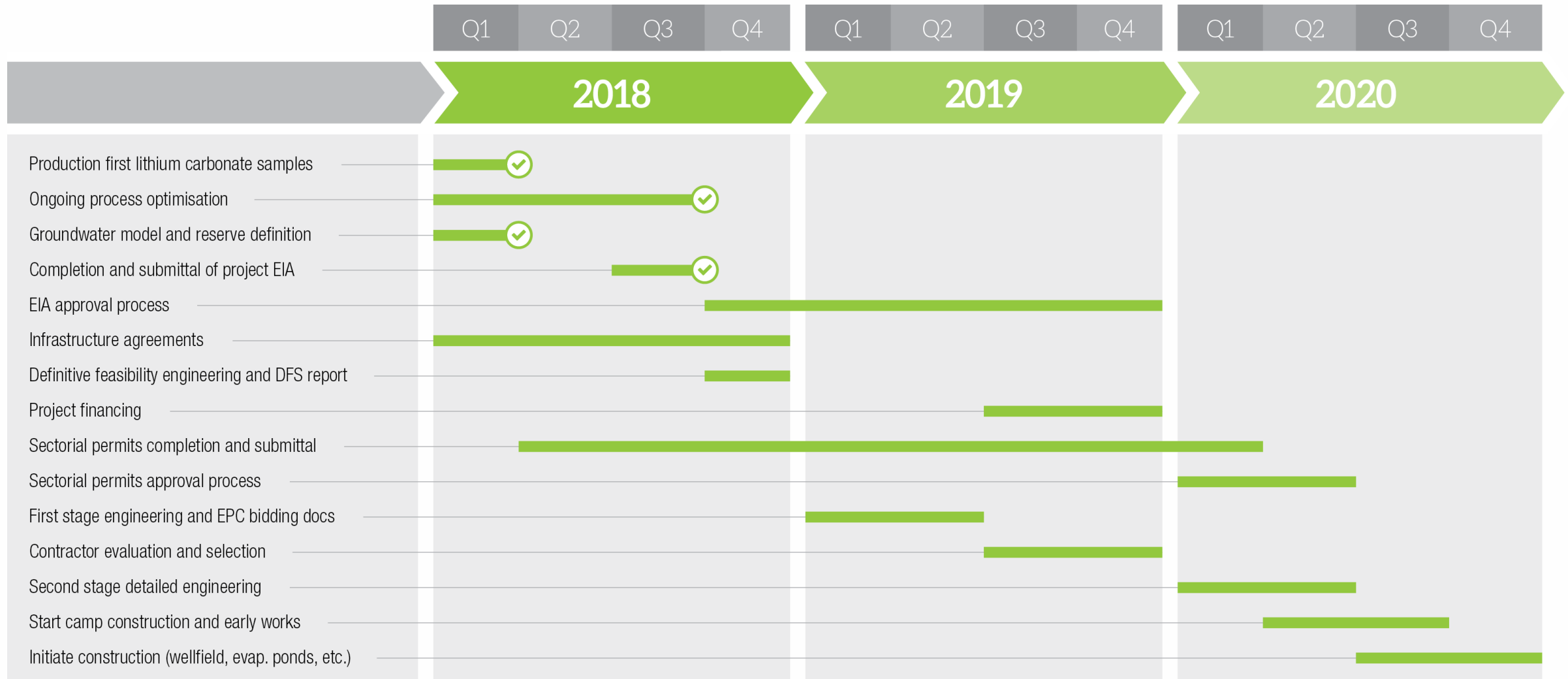
Payback

<3 years
based on **2-year** ramp-up

**ESTIMATED LOW
OPERATING COST PLACES
MARICUNGA AMONG THE
MOST EFFICIENT LITHIUM
PRODUCERS GLOBALLY**

- ✓ Project utilizes conventional evaporation pond and process technology to minimise operational risks.
- ✓ PEA completed by WorleyParsons to international standards with a +/- 25% study accuracy: [Technical Report 14-Dec-2017](#).
- ✓ Definitive Feasibility Study. Target 4Q18

Timeline for growth catalysts: 2018 to 2020



Unrivalled project quality

- ✓ **Tier-1 companies** undertaking project studies for low risk development
- ✓ **Feasibility in progress:** heading to definitive feasibility study
- ✓ **High quality** brine resource
- ✓ Use of **traditional and well proven** production processes
- ✓ Working with /pilot plant: **Tier 1 equipment suppliers**
 - **Engineering:** WorleyParsons
 - **Production:** GEA, Veolia, Andritz, FLSmidth, and SGS



WorleyParsons
resources & energy

GEA engineering for
a better world



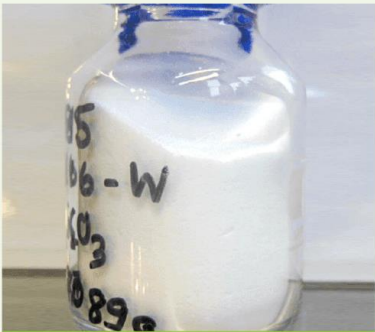
ANDRITZ



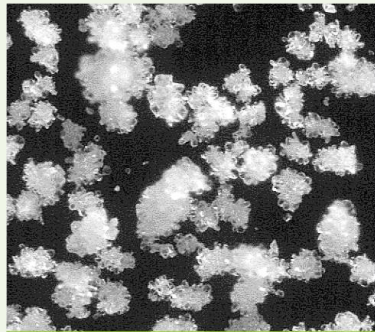
Building momentum for the future

February 2018

- ✓ **Highly experienced** process company GEA produced the first sample of lithium carbonate from Maricunga brine
- ✓ The sample has a **purity of 99.4%** lithium carbonate, consistent with battery grade Lithium Carbonate production such as by Albemarle and SQM in Chile



First lithium sample from the Maricunga brine



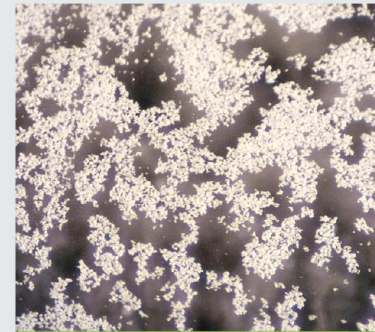
Washed sample from the completed process

April 2018

- ✓ **Tier 1 processing group** Veolia Water Technologies produced **99.9% lithium carbonate** samples from the Maricunga brine
- ✓ **Optimized evaporation process** developed by Minera Salar Blanco used several crystallization techniques to remove primary contaminants resulting in higher purity levels



Lithium carbonate sample



Lithium carbonate sample

Ongoing

Further upside:

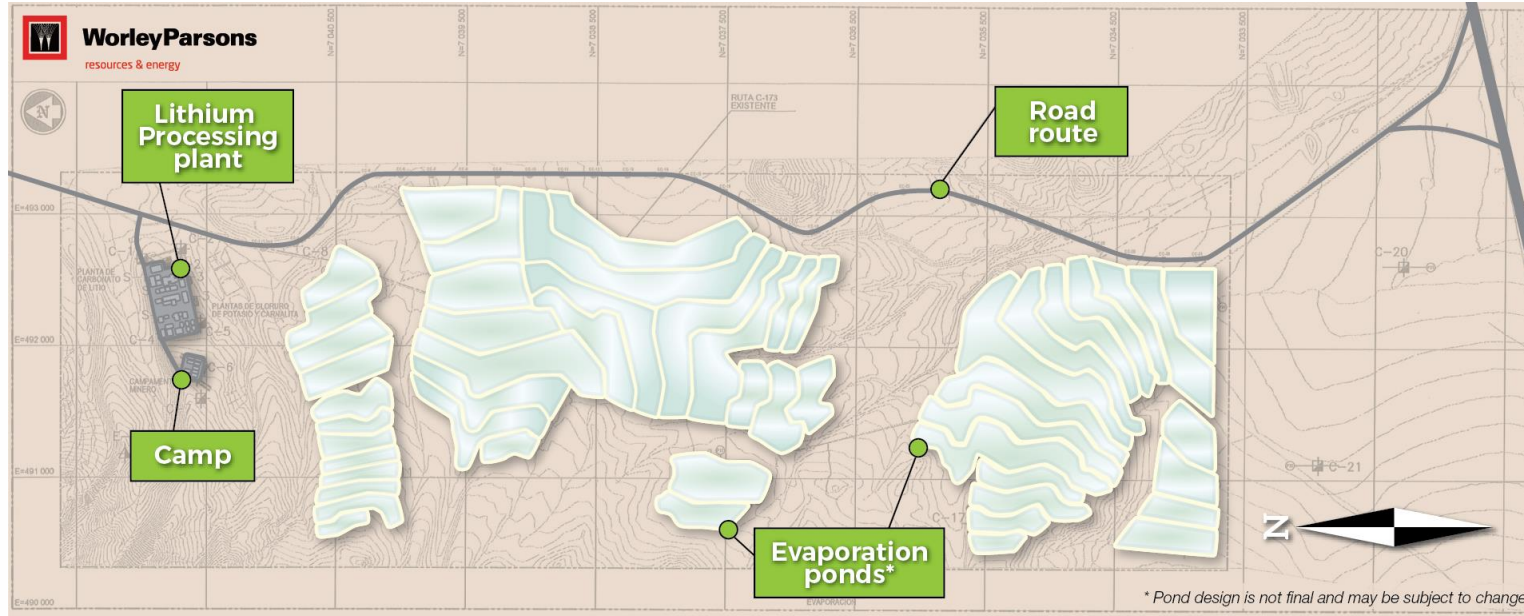
- ✓ **Pilot plant testing** to continue to further quantify the process for commercial sustainability
- ✓ **Production of lithium carbonate samples** leaves LPI well positioned for discussions with potential off-take partners and financiers

Infrastructure required for lithium production at Maricunga consists of:

- ✓ Evaporation ponds
- ✓ Process Plant
- ✓ Installation of wellfield and pipelines to the evaporation ponds
- ✓ Electricity supply and transmission lines
- ✓ Water supply and water treatment
- ✓ Roads of sufficient quality to transport construction equipment, chemical consumables for production and lithium carbonate product
- ✓ Port selection for importation and exportation

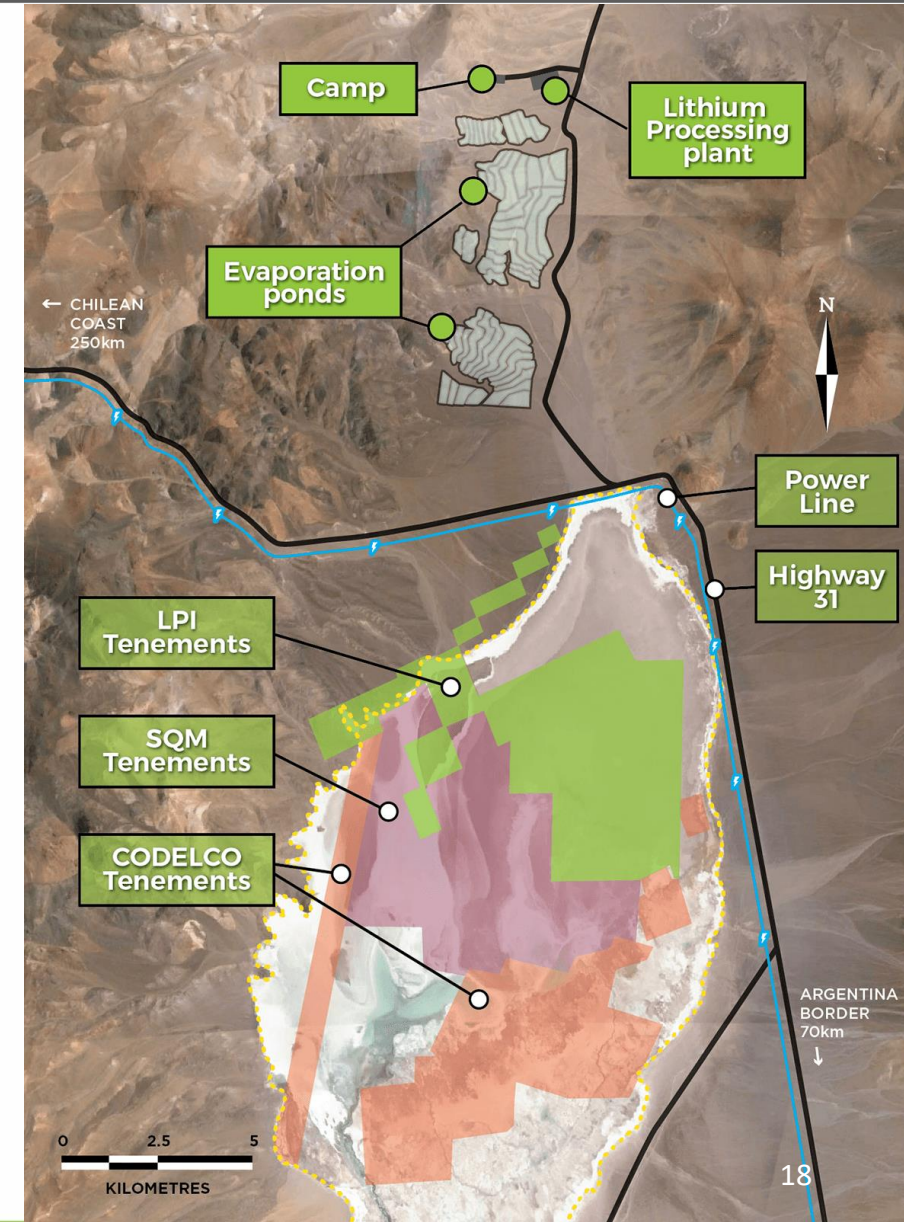


Processing plant and evaporation pond site design



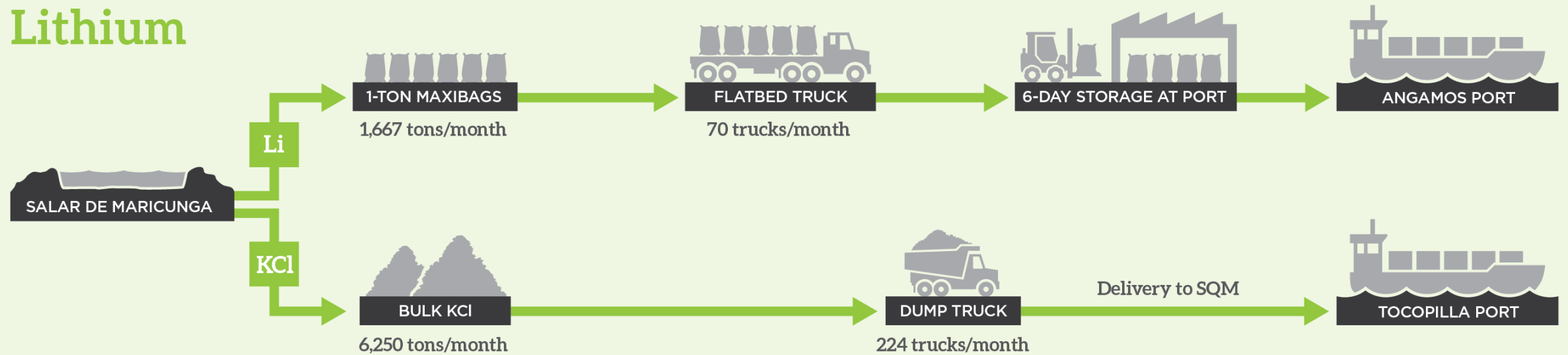
Ponds to be built off the salar to the north to:

- ✓ allow **easier construction** in areas of gravel; and
- ✓ **minimize the visual impact** of the ponds.



Port and logistic assessment completed

Lithium



Soda Ash (every three months)



Permitting update: natural course of business

✓ Environmental Impact Assessment (EIA):

- **Environmental baseline completed**, EIA submitted in September 2018.
- **Social aspects of the project advancing**, with indigenous groups and local municipalities.

✓ Awarded Production Permit (CCHEN): on 9 March 2018:

- The Chilean Nuclear Energy Commission (CCHEN) has awarded a **key regulatory export licence** for the production and marketing of lithium from LPI's 50%-owned Minera Salar Blanco S.A (MSB) joint venture for a period of 30 years.
- The approval permits the initial extraction quota of **88,885 metric tonnes of lithium metal** contained in brine or 472,868 tonnes of lithium carbonate equivalent (LCE). This covers production from the old code mining concessions.
- **The CCHEN can increase** the approved extraction quota upon MSB advancing the deep drilling below the 200m depth of the current resource.



MWH®

BUILDING A BETTER WORLD

- ✓ **High-grade** lithium project in a stable mining jurisdiction: **Chile**
- ✓ **We expect** feasibility study will confirm near term production **at very low cost**
- ✓ **Solid team** involved in **building mega mining projects**
- ✓ **Shareholder alignment:** Management **owns 20+%**
- ✓ **Fully funded** to **final investment decision**
- ✓ **Potential** to generate **additional value from...**
 - Mineral Resources conversion to reserves
 - Continued de-risking of the project
 - Securing strategic offtake partners

Lithium Power: Other Projects – Western Australia

1. Pilgangoora – Pilbara, Western Australia: 100% Ownership – Exploration Stage

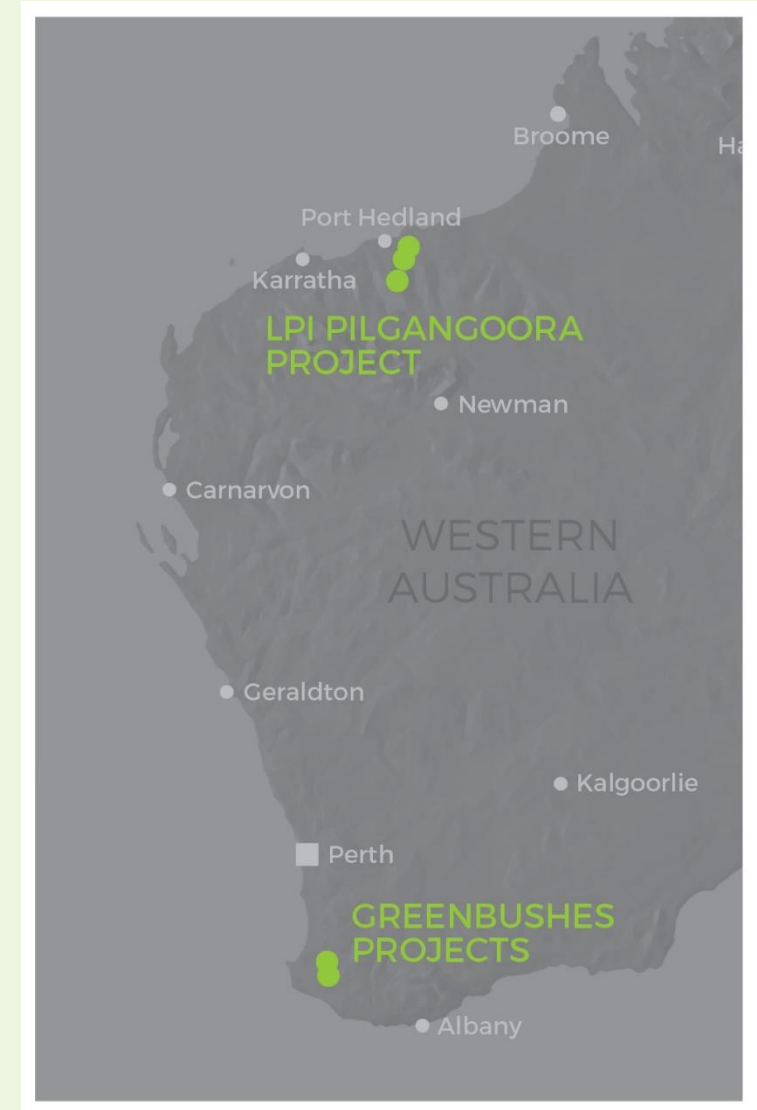
- ✓ Situated adjacent to Pilbara Minerals' and Altura Mining's lithium pegmatite deposits
- ✓ LPI is exploring for lithium pegmatites in a continuation of the same sequence of rocks immediately west of the tenements held by these companies
- ✓ An initial drilling program was undertaken in 2018
- ✓ Additional soil sampling and mapping to commence during 4Q18

2. Tappa Tappa and Strelley Projects, Western Australia: 100% Ownership – Exploration Stage

- ✓ Covers a 20km strike of highly prospective greenstone units situated north-west of FMG's Tappa Tappa project
- ✓ Contains the same greenstone belt that FMG is extensively drilling
- ✓ Field work has confirmed the outcrop of the two pegmatite bodies
- ✓ Results from rock chip samples and systematic soil sampling over these units will be returned in 4Q18

3. Greenbushes, Western Australia: 100% Ownership – Exploration Stage

- ✓ Tenements extend over 400km²
- ✓ Tenements contain large strike lengths of the same rock suite that hosts the adjacent Greenbushes lithium mine, the world's largest lithium producer
- ✓ Tenements include the Balingup project and the Brockman Highway project



Lithium Power: Other Projects – Argentina

1. Centenario, Argentina: 70% Ownership – Exploration Stage

- ✓ 70:30 Joint Venture between LPI and Centenario Lithium Limited
- ✓ Covers an area of 68km² in the Centenario lithium brine salar over 7 separate adjoining properties
- ✓ Geophysical surveys have recently been completed on the project and indicate an extensive brine body throughout the tenements
- ✓ Reviewing drill target points with a likely engagement of a drill program early 2019
- ✓ Drilling permits have been received from the government agencies



Other Projects: Technical Committee

Murray Brooker – QP/CP under TSX NI 43-101/JORC

Independent consultant and hydrogeologist specialising in lithium brine over the last 8 years, with 25 years of total experience in mining and exploration. Areas of expertise include: project management, project evaluation & feasibility, and geological interpretation & reporting. Has previously led teams in Chile, Argentina, and Australia. Was the JORC Competent Person to Orocobre on their Olaroz lithium brine project.

Ian Miles – Principal Exploration Geologist

Independent consultant and geologist with 20 years of experience specialising in advancing Greenfields projects to mining. His exploration expertise includes project generation, targeting, evaluation, assessment and the management of large exploration programs in Australia and South America.

