

Twenty
Seven

Co.

Twenty Seven Co

AGM Presentation



TWENTY SEVEN Co. CORPORATE STATISTICS

ASX Code:

TSC

Cash @ 27/11/18

\$675,000

Debt

Nil

Ordinary Shares:

892 million

Unlisted Options:

42.5 million

Performance Rights

280 million

Market Cap. (@ \$0.005)

\$4.4 million

Placement Capacity (shares)

Listing Rule 7.1 (15%)

133.8 million

Listing Rule 7.1A (10%)

89 million

Board and Management

Robert Rorrison (Non-Exec. Interim Chairman)

Martin Janes (Non Exec. Director)

Mark Siford (Non Exec. Director)

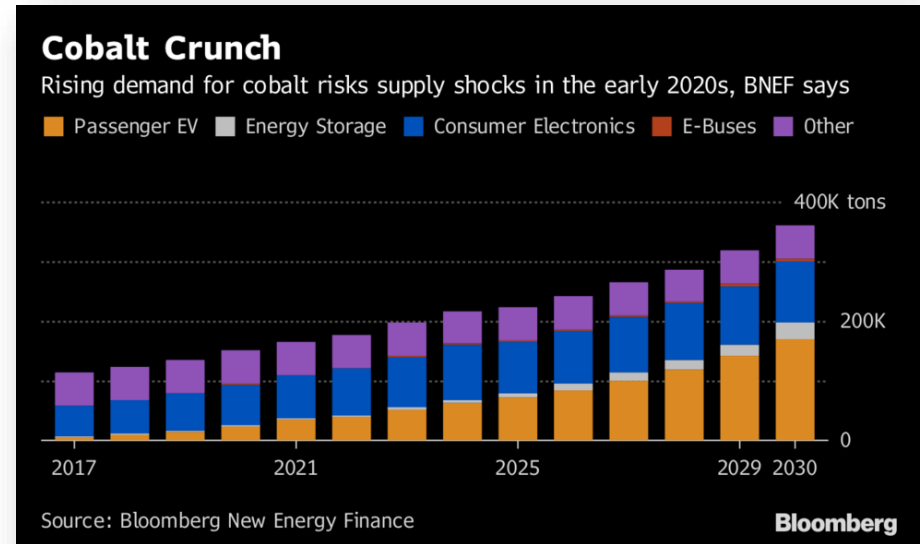
Damien Connor (CFO & Co Sec.)

Ian Warland (CEO)



COBALT DEMAND

- ❑ The rapid rise in cobalt demand and price is driven by growth in electric vehicles (EV) and the need for cobalt based lithium-ion batteries
- ❑ Bloomberg New Energy Finance forecasts sales of EV's to increase from 1.1 million in 2017 to 11 million in 2025 and 30 million in 2030



- ❑ Benchmark Mineral Intelligence (BMI) expects the use of cobalt in batteries will triple between 2017 and 2026 despite the shift to lower cobalt batteries
- ❑ BMI reports that 48 mega factories are built or being built in September 2018 up from 3 in 2015, highlighting the growth of lithium-ion batteries
- ❑ Cobalt is difficult to substitute in batteries for safety and longevity reasons

TSC COBALT PROJECTS LOCATION

Twenty
Seven

Co.

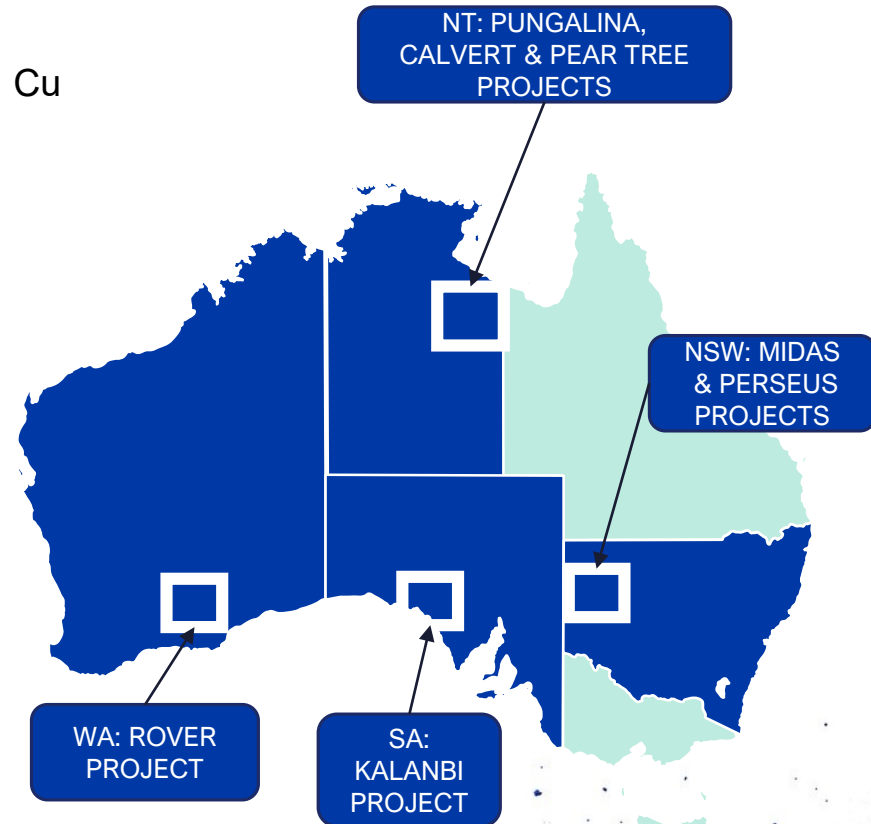
All projects 100% TSC

❑ Current Focus

- Midas and Perseus Projects (Co, Cu) including Benco Co prospect
- Kalanbi Project (Co, Ni, Cu, Au)

❑ Emerging Opportunities

- Pungalina, Pear Tree and Calvert Projects (Co, Cu)
- Rover Project (Co, Ni, Cu, Au)



A BUSY WORK SCHEDULE

Project	Activity	Sept 18 Qtr.	Dec 18 Qtr.	Mar 19 Qtr.	Jun 19 Qtr.
Midas	Soil geochemistry , mapping				
	Geophysics IP				
	<i>Reconnaissance drilling</i>				
Perseus	Tenement Grant , work approvals				
	Data review target generation				
	<i>Geochem auger drilling</i>				
Kalanbi	Tenement Grant , work approvals				
	Data review target generation				
	<i>Aircore drilling</i>				
NT	Tenement Grant , work approvals				
	Data review target generation				
	Mapping and geochemistry				
Rover	Tenement Grant				
	Data review target generation				

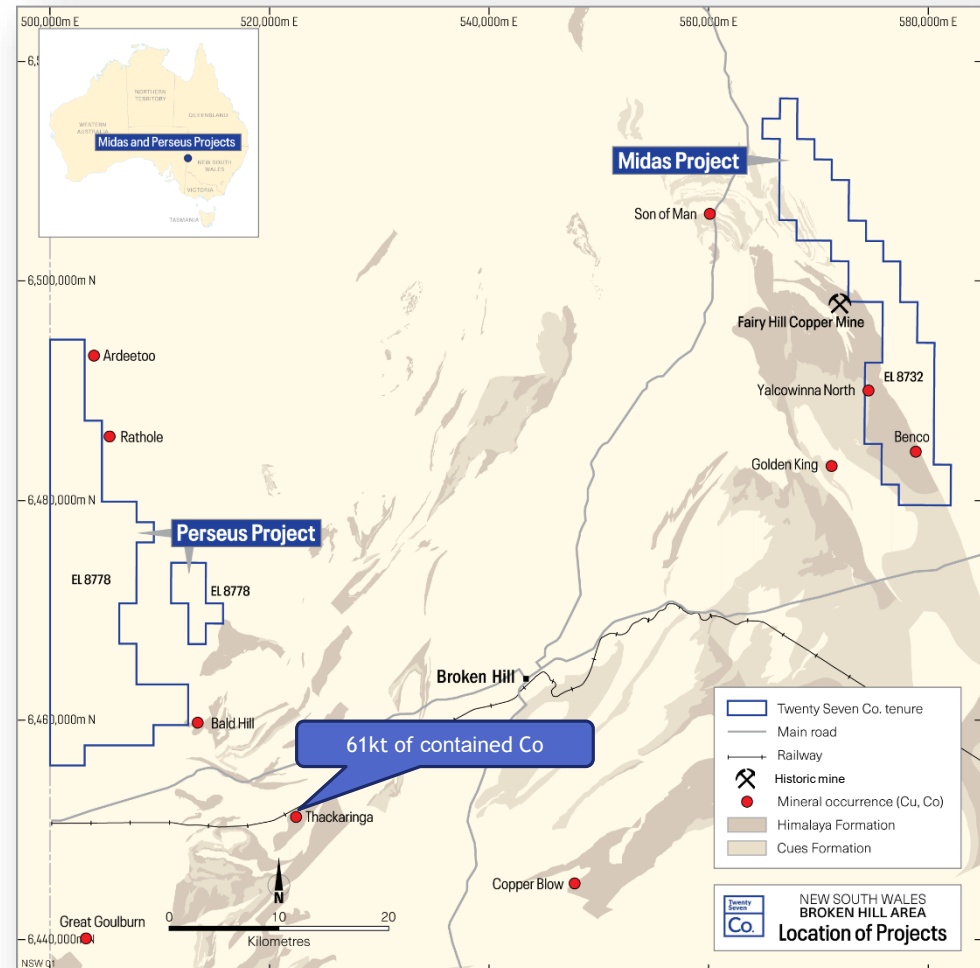
* The schedule is indicative only

MIDAS AND PERSEUS - BROKEN HILL, NSW

Twenty
Seven

Co.

- Two large Co Cu projects, Midas and Perseus in the Broken Hill Block, NSW
- Targeting the prospective Thackaringa Group for Co and Cu mineralisation
- Midas - TSC has already defined several areas of strong cobalt and copper anomalism in soil and rock chip sampling
- Perseus - six high priority aeromagnetic anomalies on redox boundary in favourable structural targets



MIDAS PROJECT (EL8732)

Twenty
Seven

Co.

Targeting Co Cu in Thackaringa Group Rocks

- Previous explorers focussed work to the west of Midas in areas of outcrop, leaving the area underexplored
- TSC's recent regional soil geochemistry and rock chip sampling identified 3 areas of strong Co Cu anomalism

Area 1

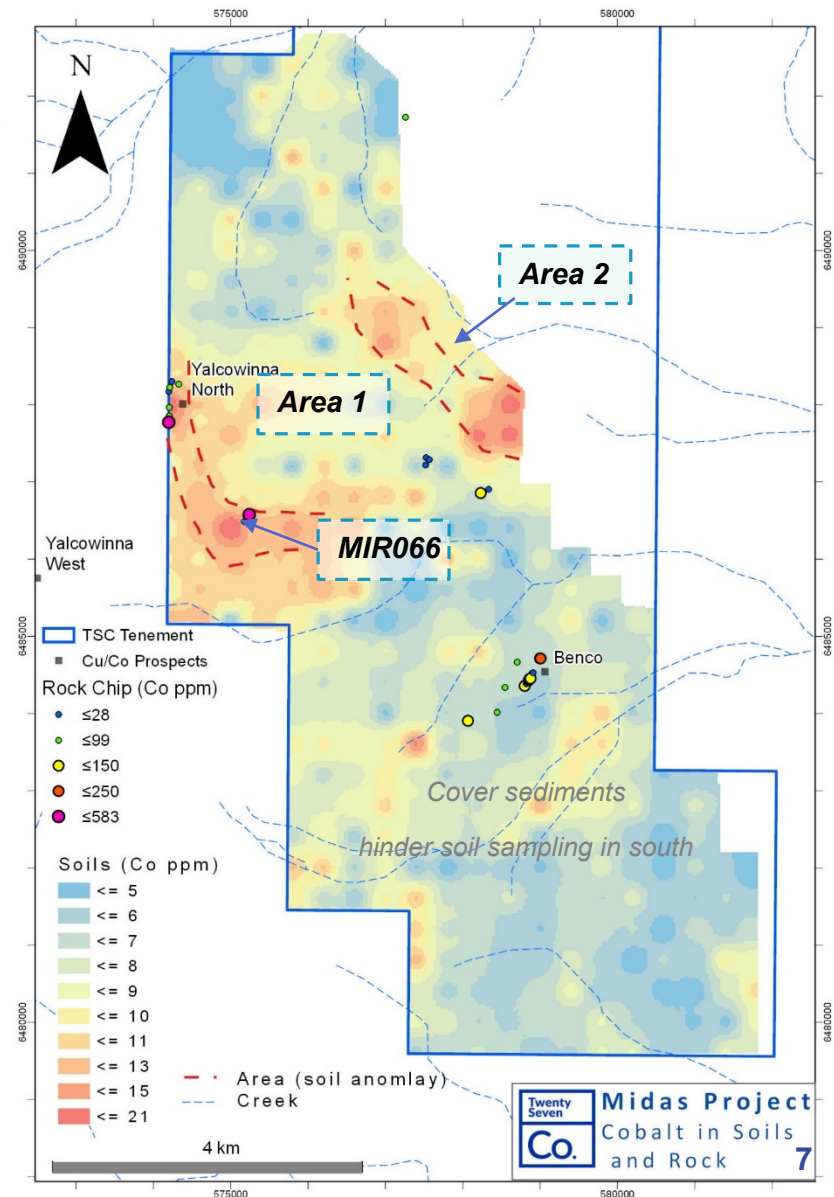
- Regional soil sampling extends Co Cu anomalism ~ 1.5km to the SE of Yalcowinna North gossanous outcrop
- MIR066 returned 583ppm Co and 704ppm Cu

Area 2

- NW trending zone of Co and Cu anomalism over 2km coincident with a strong NW trending structure and potential fold hinge

Benco Prospect

- Previously unrecorded two shallow workings ~75m apart on a quartz iron oxide vein with anomalous Cu and Co
- TSC mapping has identified multiple quartz iron oxide veins into a zone of interest ~1.6km by 300m



MIDAS CO CU PROSPECTS

Twenty
Seven

Co.

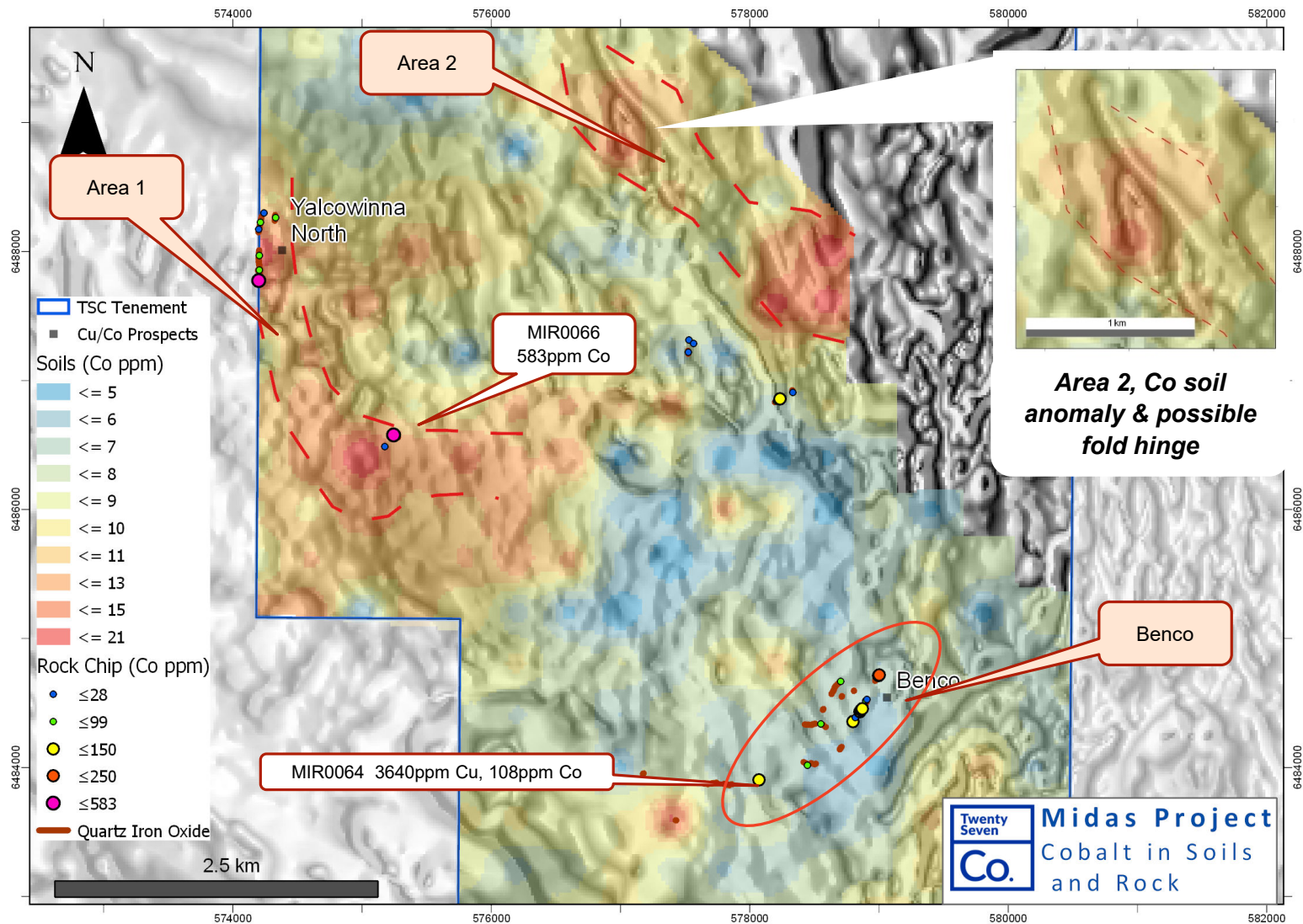


Figure: Coppmm in soils grid over RTP magnetics and rock chip results

MIDAS - BENCO CU CO PROSPECT

Twenty
Seven

Co.

- ❑ Benco is a previously unrecorded shallow workings in quartz haematite gossanous vein
- ❑ A complex series of subcropping narrow quartz iron oxide veins in a NE trending corridor ~1.6km by 300m
- ❑ Assayed rock chip samples have returned up to 4160ppm copper, 369ppm cobalt and 0.3g/t gold in separate samples at Benco
- ❑ Benco is coincident with a subtle ridge observable in the digital terrain model which could represent a significant NE trending fault or shear zone
- ❑ The presence of anomalous Au in some samples is encouraging given the Golden King historic gold mine ~7km west of Benco
- ❑ Next Steps - geophysics and geochemistry infill of anomalous areas in preparation for reconnaissance drilling

Iron Oxide rich gossan



Benco workings

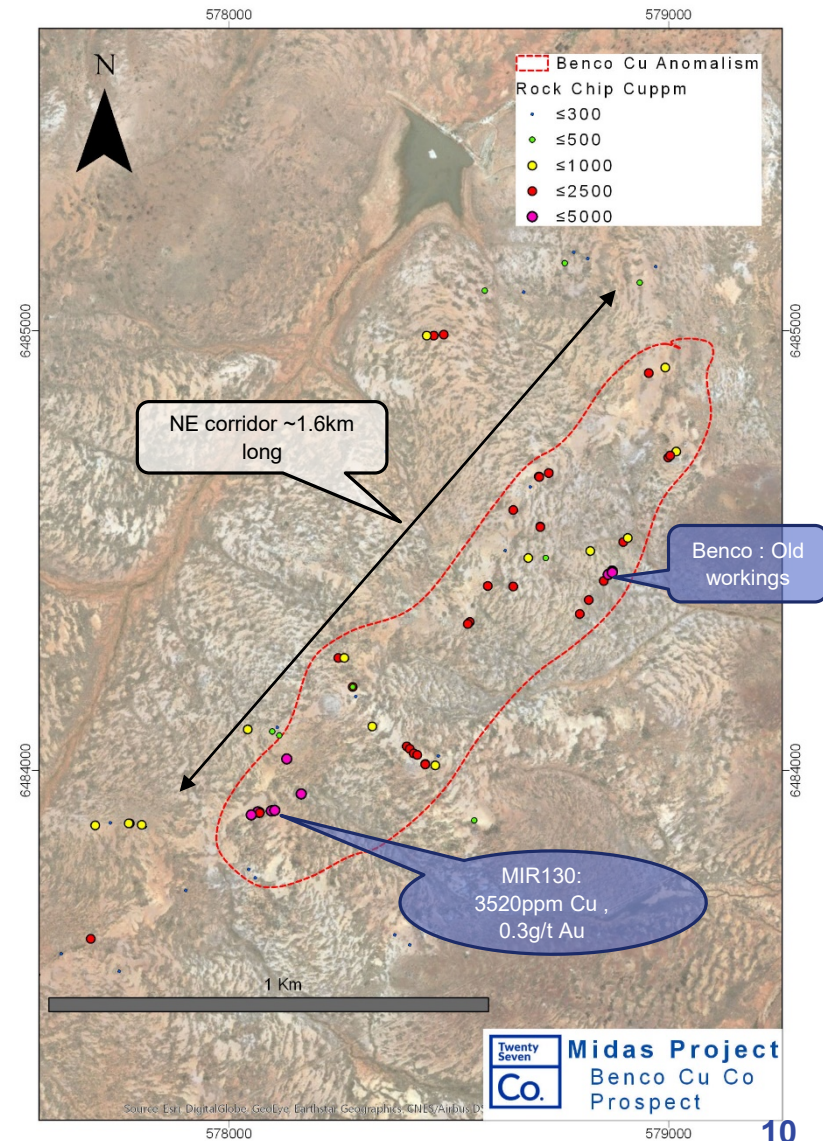
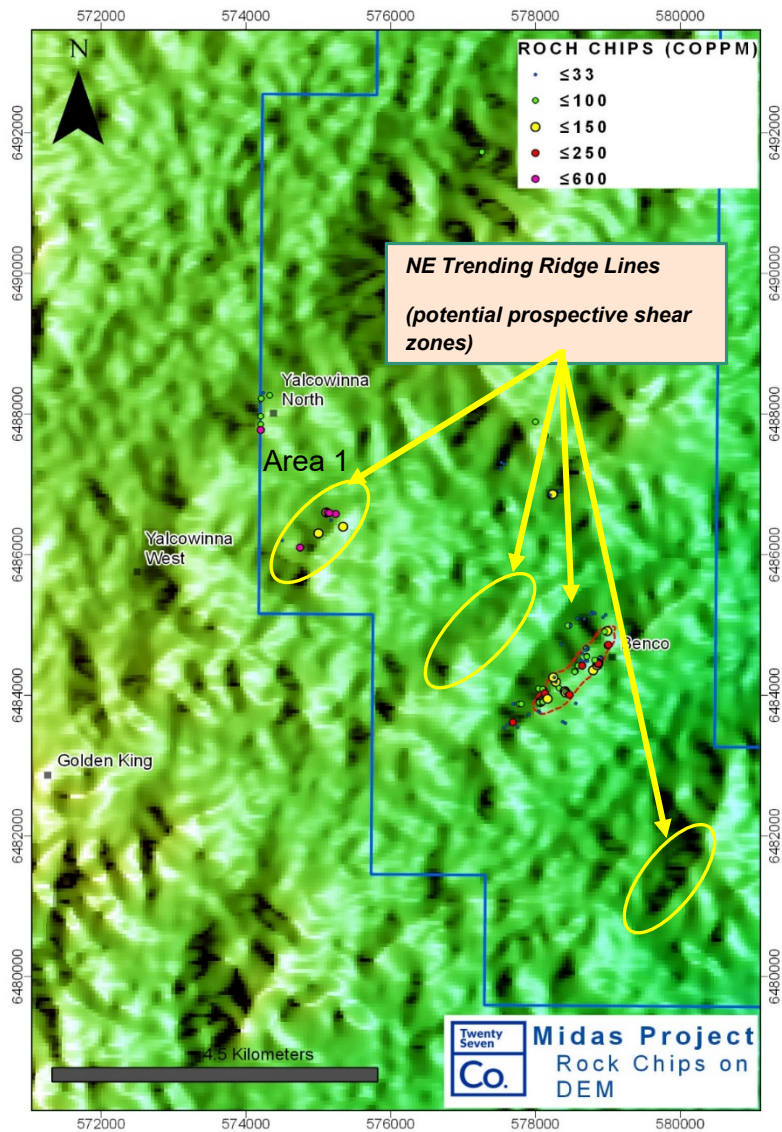


Malachite in outcrop

MIDAS CO CU PROSPECTS

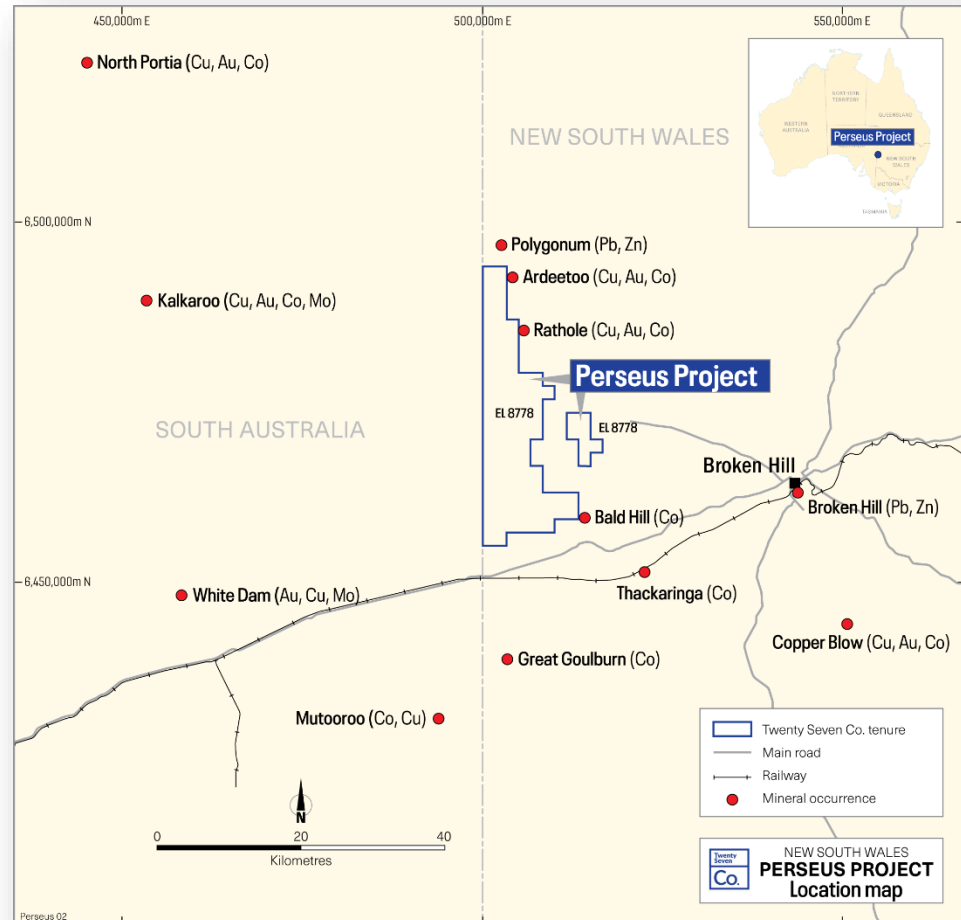
Twenty
Seven

Co.



PERSEUS PROJECT (EL8778)

- ~30km west Broken Hill and 15km north of Thackaringa cobalt project (ASX: COB)
- Large scale project potential for IOCG mineralisation
~275 sqkm of tenure with multiple targets
- Kalkaroo, North Portia & Portia IOCG are associated with redox boundary in equivalent stratigraphic position as the top of the Thackaringa Group
- 6 high priority Cu Co Au targets identified in the prospective Thackaringa Group rocks
- Extensive cover has hindered effective exploration in the past
- Limited previous exploration confirms anomalous Cu Co Au at several prospects
- Strong potential for higher grades in favourable structural traps such as fold noses, faults and shear zones



PERSEUS TARGET OVERVIEW

A review of previous exploration and reprocessing of aeromagnetic data has identified four areas of focus

North

- ❑ 2 high and 3 mid ranked priority magnetic anomalies
- ❑ Anomalous Cu Au at historic K1 and Ardeetoo near by

Central

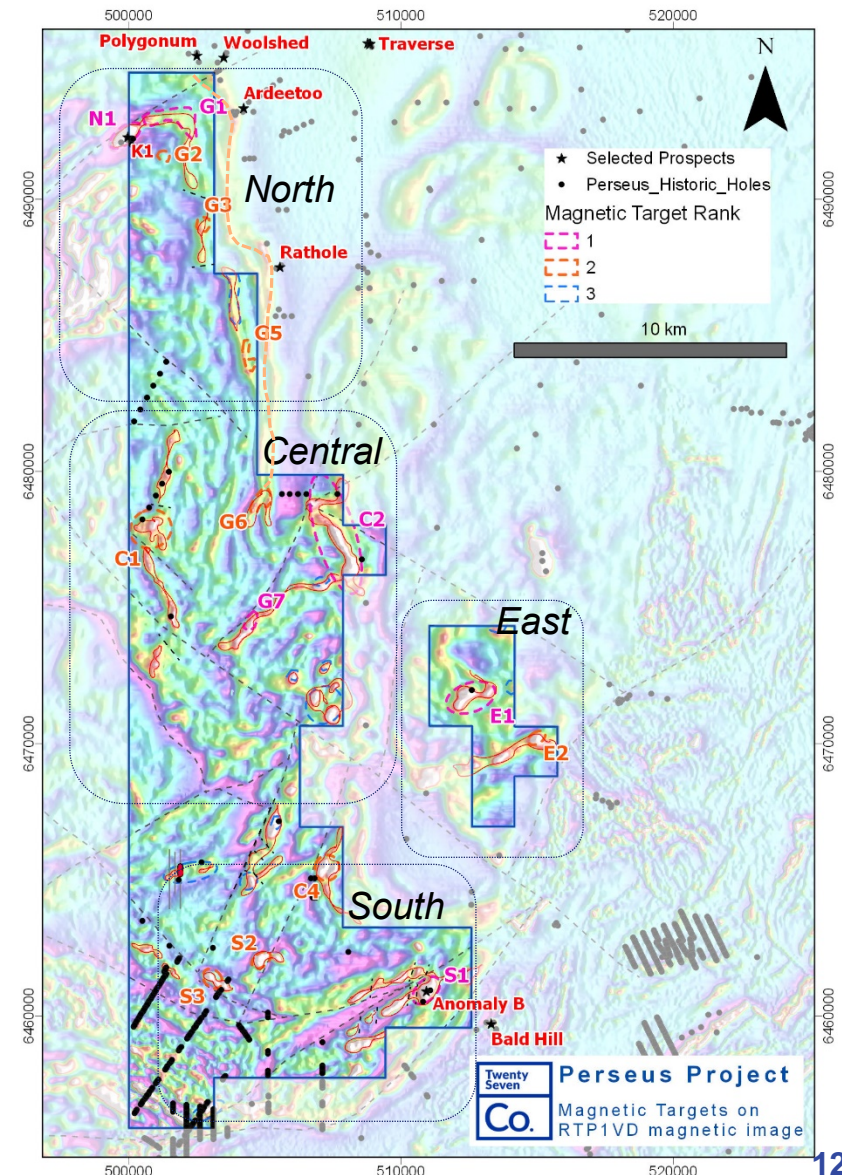
- ❑ 2 high priority and 2 mid ranked targets
- ❑ Thackaringa Group with anomalous Cu Co Au intersected in limited previous drilling

East

- ❑ E1: strong local magnetic high possible fold nose
- ❑ Previous drilling confirmed Thackaringa Group rocks in single drill hole

South

- ❑ S1: strong anomaly in tight fold hinge, proximal to major ENE-WSW structure
- ❑ Historic drill hole nearby intersects anomalous Cu Au in Thackaringa Group rocks



PERSEUS CENTRAL/EASTERN TARGETS

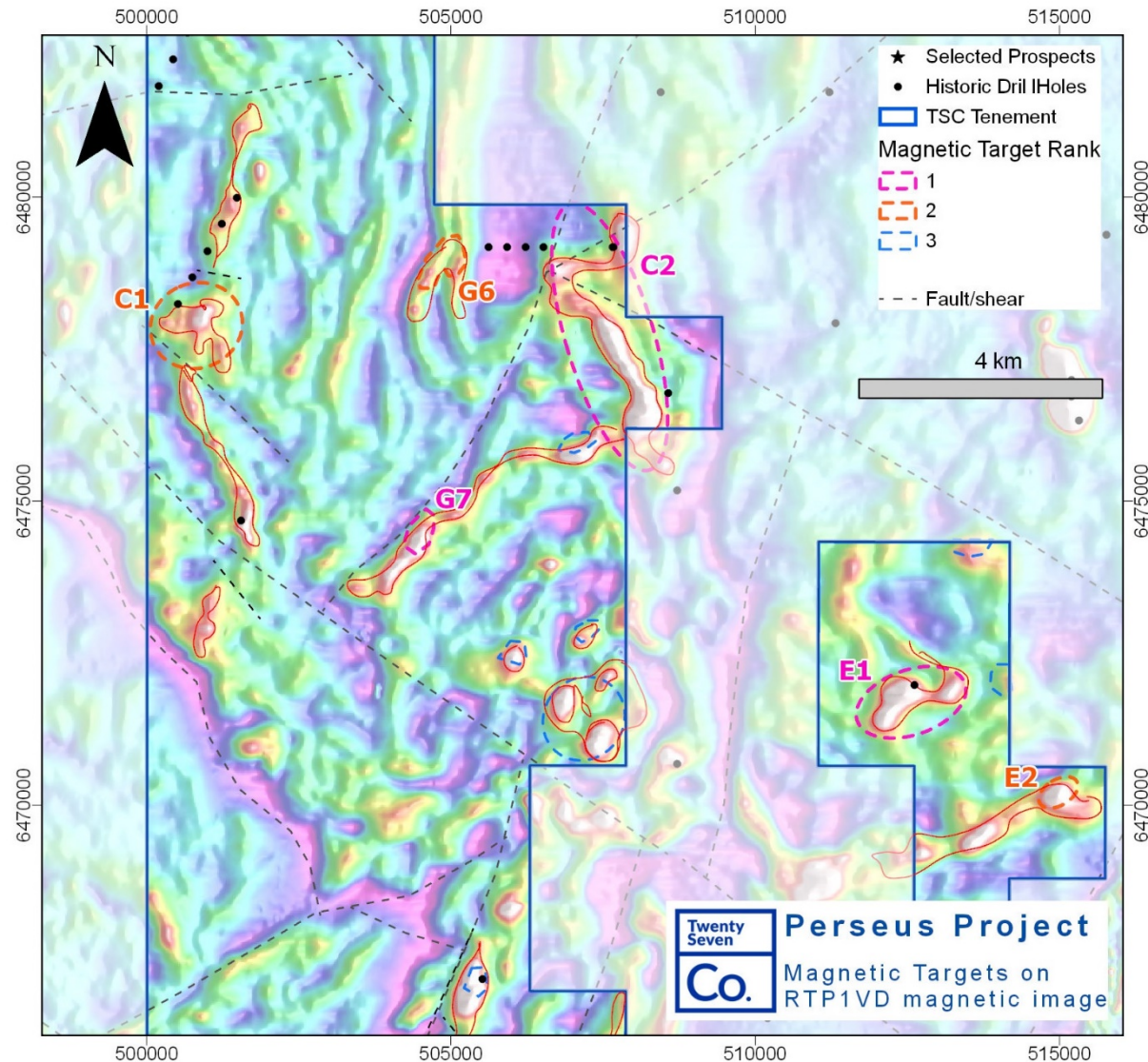
Twenty
Seven

Co.

New Targets

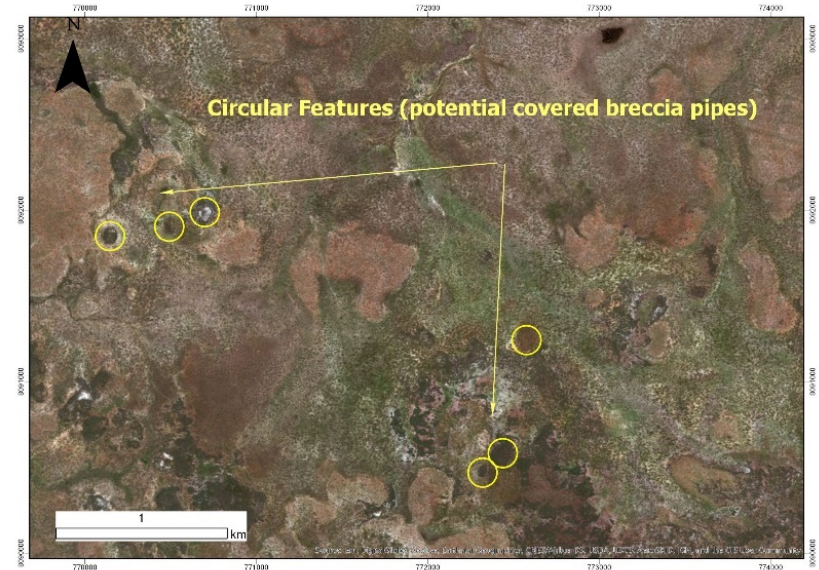
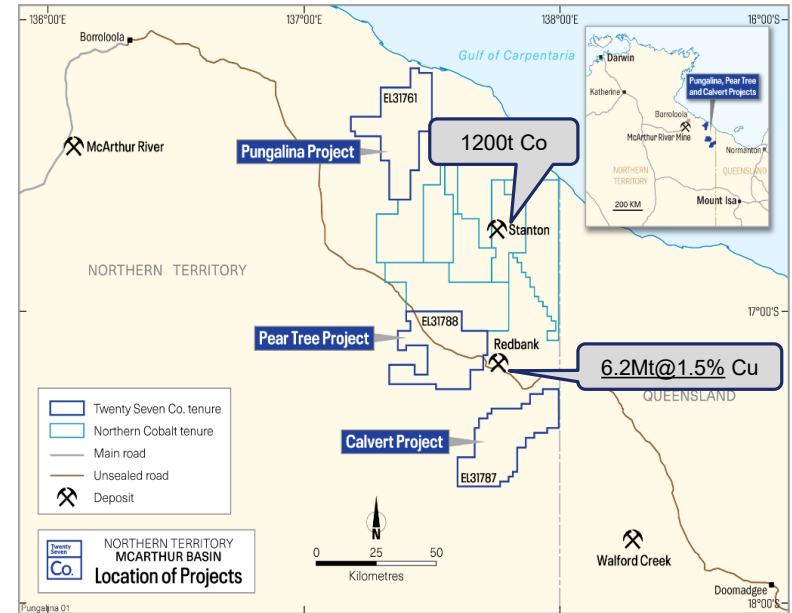
Tightly folded area with known anomalous metals in Thackaringa Group

- Fold hinge targets: G6, G7, E1
- C2: large strong magnetic anomaly, folded stratigraphy, only 2 previous holes in 3km of strike extent
- Possible Cu Co Au feeder system to stratiform zone: C1, C5
- Cross cutting magnetic anomaly: E2
- Next – geochemical auger drilling over magnetic targets



TSC holds three tenements covering ~2456sqkm within the highly prospective McArthur Basin, host to the world class McArthur River zinc-lead-silver deposit, the Stanton cobalt deposit and historic Redbank copper deposits

- ❑ The Stanton cobalt deposit (ASX:N27) and Redbank copper deposits (ASX:RCP) are hosted in breccia pipes within the Gold Creek Volcanics (GCV)
- ❑ Breccia pipes in the GCV often occur in clusters such as at Redbank and Stanton
- ❑ At TSC's Pear Tree Project TSC geologists have identified circular features consistent with breccia pipe shapes in the satellite imagery

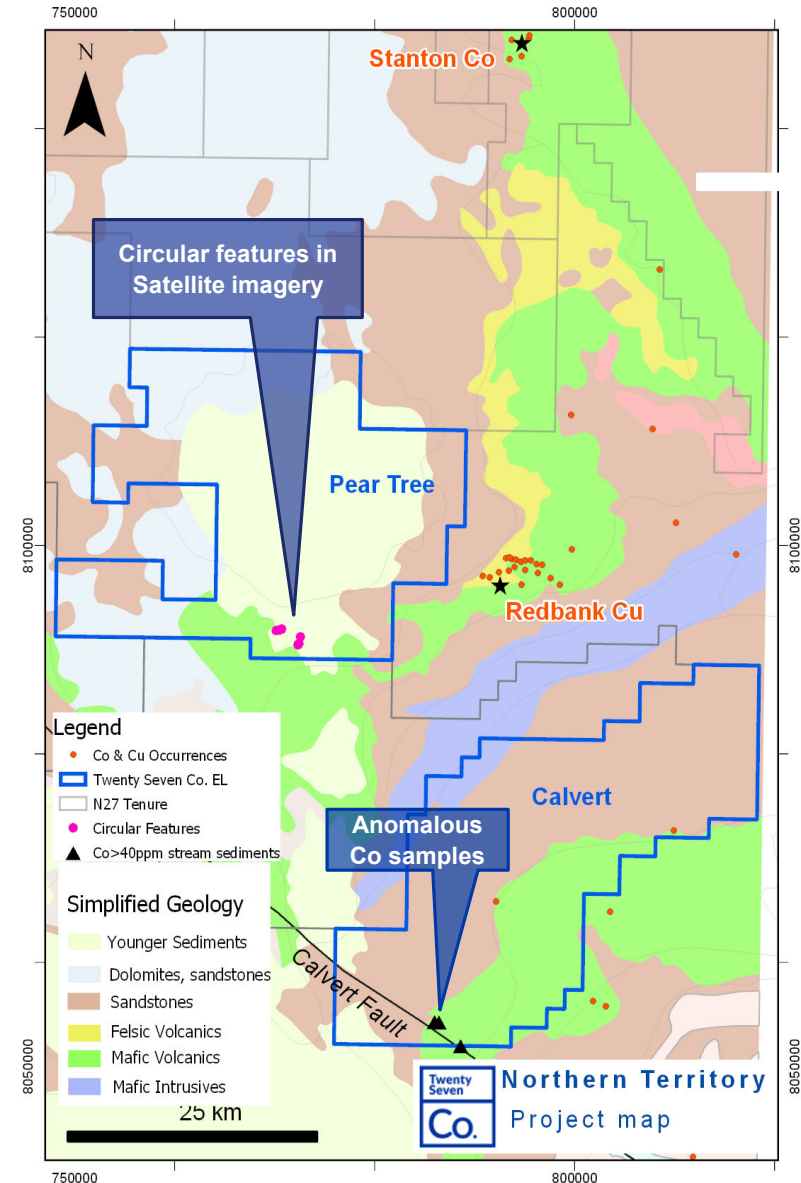


Pear Tree (EL31788)

- ❑ Cover sediments have hampered previous explorers
- ❑ GCV mapped in the southern area
- ❑ circular features in satellite imagery may be breccia pipes under recent cover

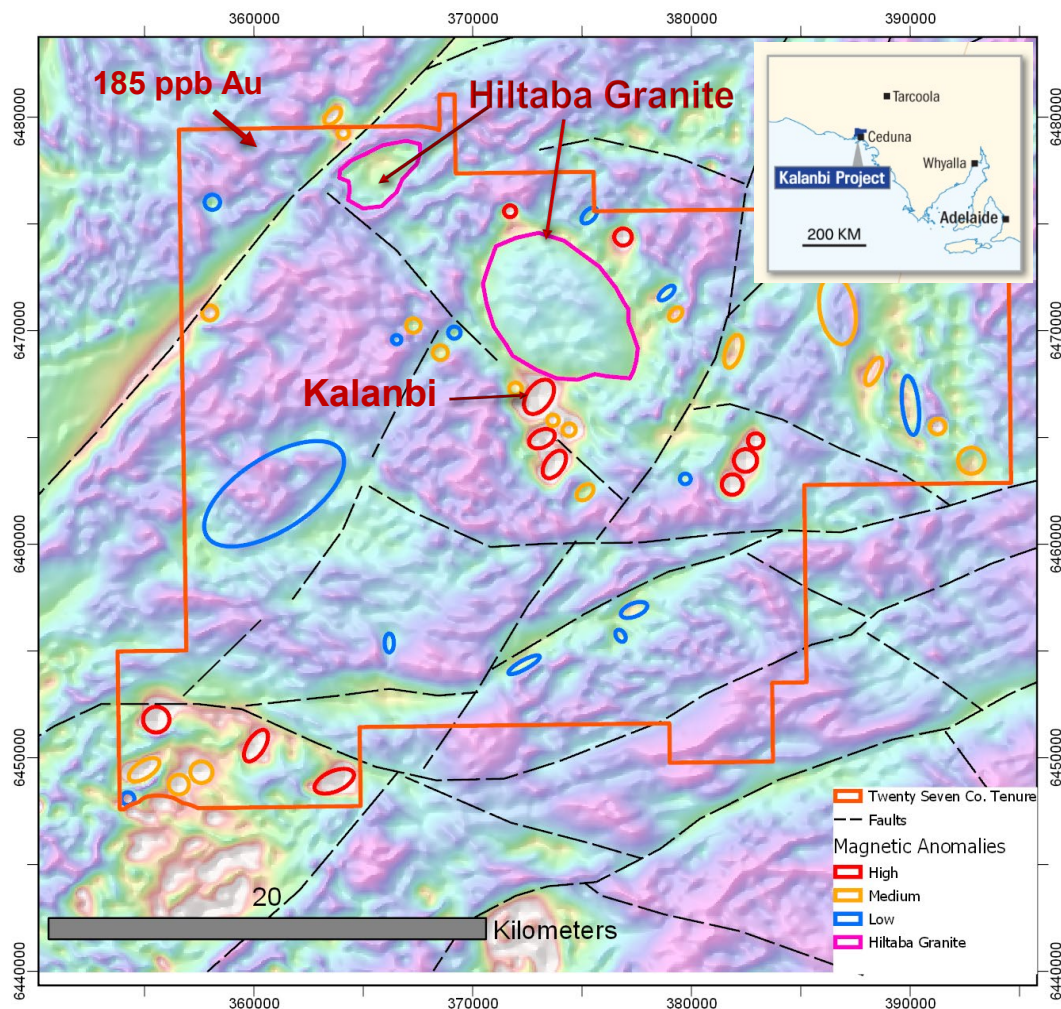
Calvert (EL31787)

- ❑ The Calvert Fault is a major structure that splays off the Fish River Fault to the south
- ❑ Aeon Metals (ASX: AML) Walford Creek Cu Pb Zn Ag Co deposit lies on the Fish River Fault ~60km SE of TSC Calvert Project
- ❑ Historic stream sediment samples results up to 80ppm Co form a small cluster of anomalous Co (>40ppm) next to Calvert Fault
- ❑ Several historic shear hosted Cu Co mineralisation occurrences recorded in the NT government database



Targeting cobalt, nickel and copper in the Proterozoic Ceduna mafic complex

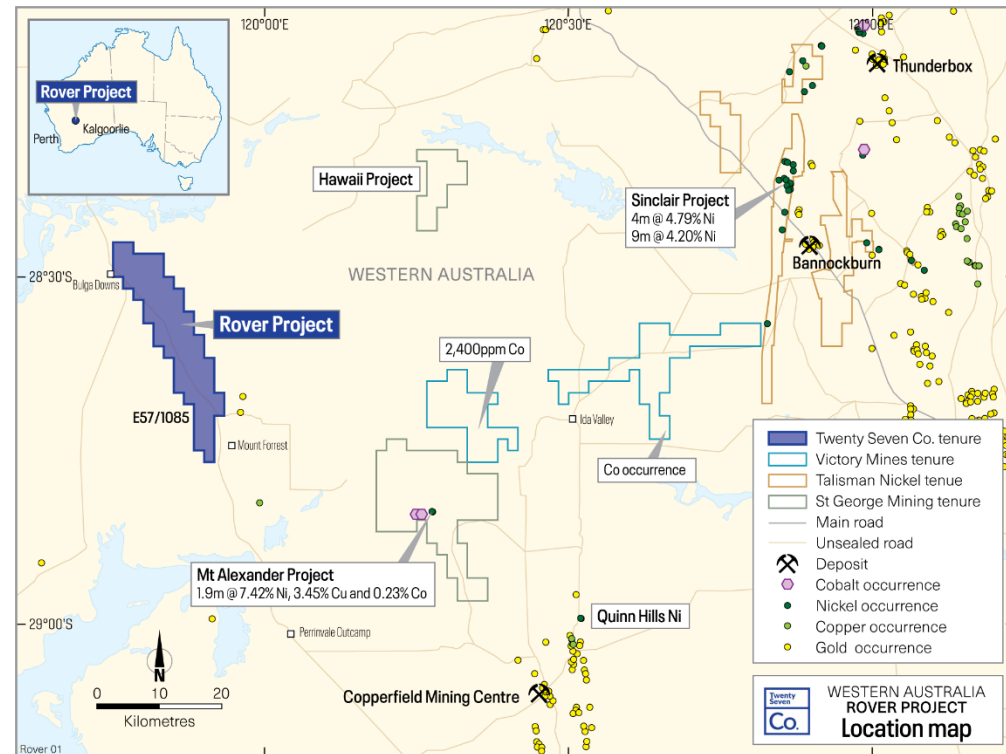
- TSC reprocessed aeromagnetic data identifying several prospective mafic and ultramafic intrusives, of which 12 highly ranked anomalies are selected for follow-up
- Historic drilling by Pasminco at Kalanbi prospect intersected up to 2600ppm Ni and 3400ppm Co from 24 to 26m
- Hiltaba Granite fringed by mafic intrusives may have potential to host hydrothermal style Ni-Cu (PGE) mineralisation analogous to the Avebury Ni deposit in Tasmania
- Historic aircore drilling intersecting up to 185ppb Au from 30m in a significant NE trending shear
- Next – new detailed government funded aeromagnetic data available late 2018



Kalanbi aeromagnetic targets on VRMI background

ROVER PROJECT (IN APPLICATION)

- ❑ TSC's Rover is 140km west of Leonora in Co-Ni-Cu mineral rich area associated with mafic and ultramafic rocks
- ❑ The area is underexplored for Co and now undergoing a resurgence in exploration
- ❑ St George Mining's (ASX: SGQ) intersected 1.9m @ 7.42% Ni, 3.45% Cu and 0.23% Co in January 2018¹ and recently reported average XRF readings of 6.92m @ 8.03% Ni and 5.06% Cu from 184.42m at Investigators Prospect¹



- ❑ Talisman Mines (ASX: TLM) intersected 4m @ 4.79% Ni and 8m @ 4.2% Ni
- ❑ Rover has historic anomalous Ni-Co values associated with mafic dykes and greenstones highlighting the significant potential of the project

JORC INFORMATION AND COMPETENT PERSON STATEMENT

JORC Information :

Additional details including JORC 2012 reporting tables, where applicable, can be found in the following relevant announcements lodged with the ASX;

- Multiple Veins Extends Benco Prospect at Midas – 27 November 2018
- Two New Cobalt Tenements Granted in NT – 13 November 2018
- Significant cobalt copper anomalism at Midas Project – 25 October 2018
- Enhanced Cobalt-Copper Mineralisation Potential at Midas – 3 October 2018
- Annual Report 2018 – 24 September 2018
- High Priority Co Ni Cu Targets identified at the Kalanbi Project - 28 August 2018
- Pungalina EL Granted - 16 August 2018
- Issue of Shares and Performance Rights and Appendix 3B – 13 August 2018
- Section 708A Notice – 2 August 2018
- Issue of Shares Appendix 3B - 2 August 2018
- EGM Presentation – 27 July 2018

Competent Person Statement

Mr Ian Warland is an employee of the company and has sufficient experience that is relevant to the style of mineralisation and type of deposit under consideration and to the activity being undertaken to qualify as a Competent Person as defined in the 2012 Edition of the 'Australian Code for Reporting of Exploration Results, Mineral Resources and Ore Reserves' and is a member of the Australasian Institute of Mining and Metallurgy. Mr Ian Warland consents to the inclusion in the report of the matters based on his information in the form in which it appears.

DISCLAIMER

This presentation has been prepared by Twenty Seven Co. Limited (Twenty Seven Co.). This document contains background information about Twenty Seven Co. 's current situation at the date of this presentation. The presentation is in summary form and does not purport to be all inclusive or complete. Recipients should conduct their own investigations and perform their own analysis in order to satisfy themselves as to the accuracy and completeness of the information, statements and opinions contained in this presentation. This presentation is for information purposes only. Neither this presentation nor the information contained in it constitutes an offer, invitation, solicitation or recommendation in relation to the purchase or sales of shares or other securities in any jurisdiction. This presentation is not a prospectus, product disclosure statement or other offering document under Australian law (and will not be lodged with the Australian Securities and Investments Commission (ASIC)) or any other law.

This presentation does not constitute investment or financial product advice (nor tax, accounting or legal advice) and has been prepared without taking into account the recipient's investment objectives, financial circumstances or particular needs and the opinions and recommendations in this presentation are not intended to represent recommendations of particular investments to particular persons. Recipients should seek professional advice when deciding if an investment is appropriate. All securities involve risks which include (among others) the risk of adverse or unanticipated market, financial or political developments.

To the fullest extent permitted by law, Twenty Seven Co. , its officers, employees, agents and advisors do not make any representation or warranty, express or implied, as to the currency, accuracy, reliability or completeness of any information, statements, opinions, estimates, forecasts or other representations contained in this presentation. No responsibility for any errors or omissions from this presentation arising out of negligence or otherwise are accepted.

This presentation may include forward-looking statements. Forward-looking statements are only predictions and are subject to risks, uncertainties and assumptions which are outside the control of Twenty Seven Co. . Actual values, results or events may be materially different to those expressed or implied in this presentation. Given these uncertainties, recipients are cautioned not to place reliance on forward looking statements.

Any forward-looking statements in this presentation speak only at the date of issue of this presentation. Subject to any continuing obligations under applicable law, Twenty Seven Co. does not undertake any obligation to update or revise any information or any of the forward-looking statements in this presentation or any changes in events, conditions, or circumstances on which any such forward looking statement is based.

FOR FURTHER INFORMATION

ASX:TSC

Twenty Seven Co is an ASX listed cobalt focussed explorer with tenements in NSW, SA, WA and the NT.

Our objective is to create shareholder wealth through discovery of mineral resources.

Contact:

Ian Warland (CEO)

+61 410 504 272

iwarland@twentysevensco.com.au

www.twentysevensco.com.au

Twenty Seven Co. Limited

ACN: 119 978 013

Adelaide Office

28 Greenhill Road

Wayville SA 5034

P+61 (0) 8 8274 2127

