

**ASX Announcement: 4 February 2019**

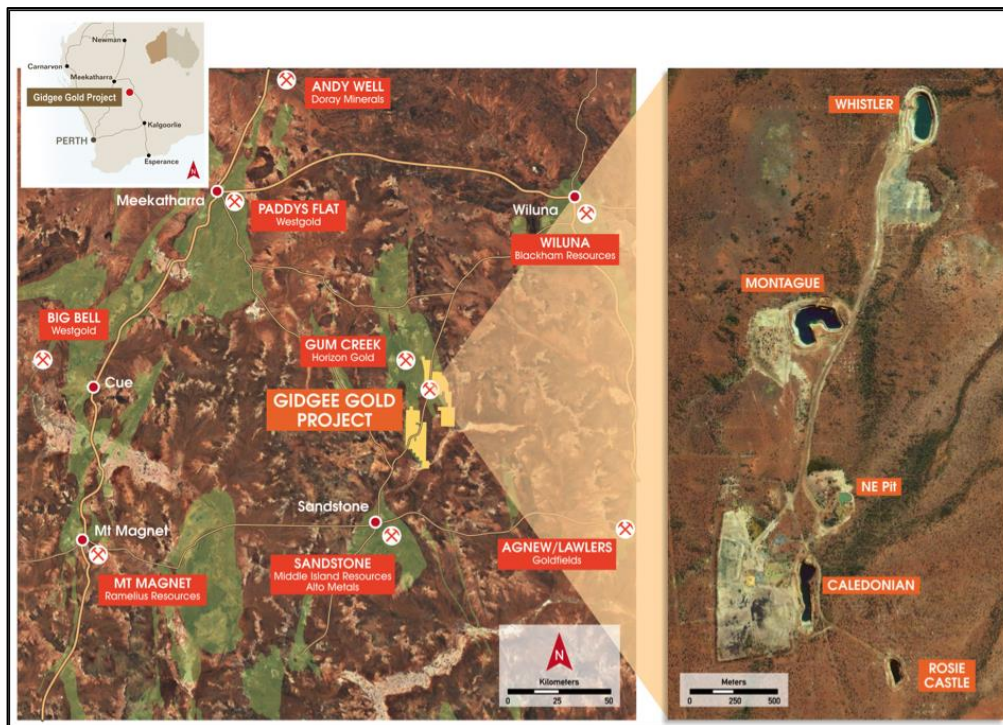
## **EXTENSIONAL DRILLING RESUMES AT GIDGEE GOLD PROJECT, WA**

### ***New program of diamond and reverse circulation drilling to test extensions at the key Whistler and Montague Gold Deposits***

Gateway Mining Limited (ASX: GML) (**Gateway** or **Company**) is pleased to advise that drilling is scheduled to recommence in mid-February 2019 at the Company's 100%-owned Gidgee Gold Project, Western Australia (Figure 1).

The new program will consist of a series of diamond drill tails at both the Whistler and Montague Gold Deposits (six holes for 350 metres), and 9 reverse circulation (RC) drill holes (~2,000m) at Montague. The drilling is targeting depth extensions of the high-grade mineralised zones at both the Whistler and Montague Gold Deposits.

Drilling is expected to be completed within a month of commencement, with results to be reported as they come to hand.



**Figure (1): Gidgee Gold Project Location Plan**

### **WHISTLER GOLD DEPOSIT**

Following the recent completion of a highly successful drilling program at Whistler<sup>1</sup>, the Company has decided to undertake an interim maiden Mineral Resource estimation with a particular focus on understanding the potential to undertake a cut-back on the existing open pit. Additional drilling is expected to expand the resource at depth and along strike.

Recent results include:

- **GRC0346** 21 metres @ 5.30g/t Au from 149 metres
- **GRC0354** 15 metres @ 4.51g/t Au from 119 metres

<sup>1</sup> See ASX announcement dated 10 January 2019 for additional details.

- GRC0364 8 metres @ 6.04g/t Au from 190 metres
- GRC0343 6 metres @ 14.5g/t Au from 198 metres
- GRC0356 26 metres @ 2.61g/t Au from 126 metres
- GRC0355 18 metres @ 2.85g/t Au from 114 metres
- GRC0345 32 metres @ 1.21g/t Au from 125 metres
- GRC0344 8 metres @ 1.10g/t Au from 103 metres
- GRC0353 11 metres @ 1.78g/t Au from 100 metres

This upcoming program of diamond drilling at Whistler is designed to continue testing the down-dip extensions to the high-grade mineralisation by drilling five diamond tails to the RC pre-collars completed in the recent work (Figure 2). Preparation will also be undertaken for the next phase of deeper step-out drilling.

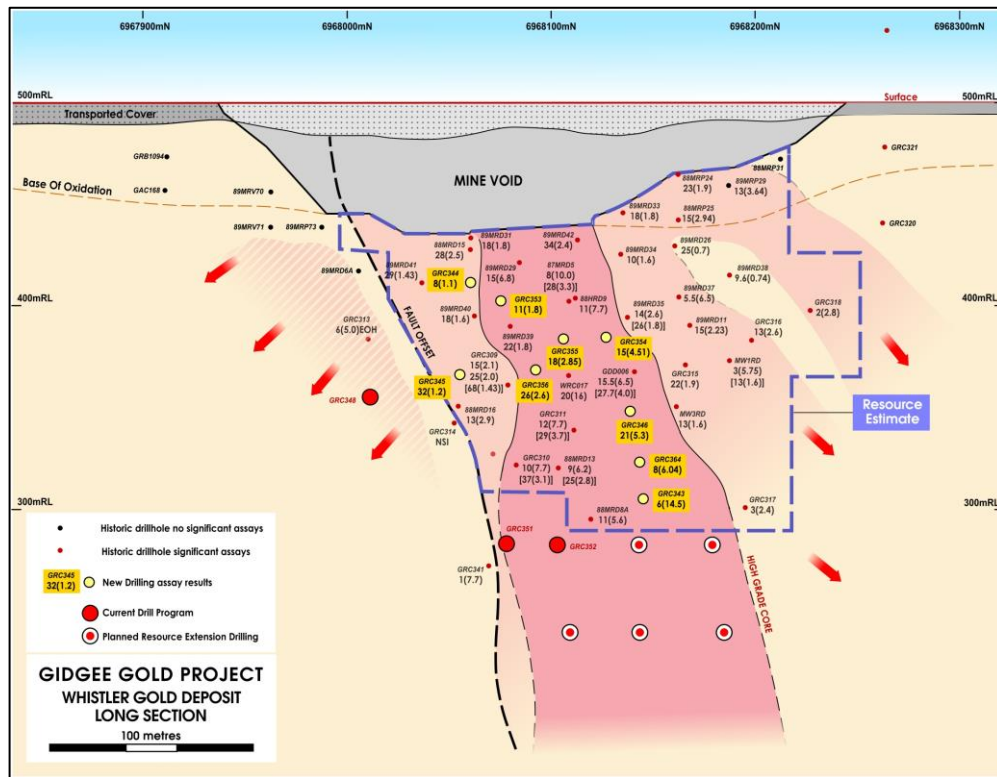


Figure (2): Whistler Gold Deposit Long Section

## MONTAGUE GOLD DEPOSIT

This recently completed program of Reverse Circulation (RC) drilling<sup>2</sup> at Montague confirmed the presence of a significant high-grade gold mineralised structure immediately down-dip of the historical open pit. The recent results include (Figures 2 and 3):

- GRC357 5 metres @ 11.5g/t Au from 104 metres
- GRC358 2 metres @ 5.80g/t Au from 75 metres
- GRC342 9 metres @ 4.24g/t Au from 89 metres
- GRC330\* 7 metres @ 3.91g/t Au from 70 metres (within 15 metres @ 2.10g/t Au) and;  
4 metres @ 24.1g/t Au from 239 metres ("Gordon's Lode")
- GRC325\* 5 metres @ 4.47g/t Au from 70 metres
- GRC360 3 metres @ 2.16g/t Au from 64 metres
- GRC361 7 metres @ 1.56g/t Au from 78 metres

This new program of RC drilling is designed to more aggressively test for significant down-dip extensions to the mineralisation (Figures 3 and 4) prior to resource estimation work. A single diamond tail will also be completed to extend a previously completed RC hole to provide a follow-up test of the high grade Gordon's Lode structure at depth.

<sup>2</sup> See ASX announcement dated 14 January 2019 for additional details.

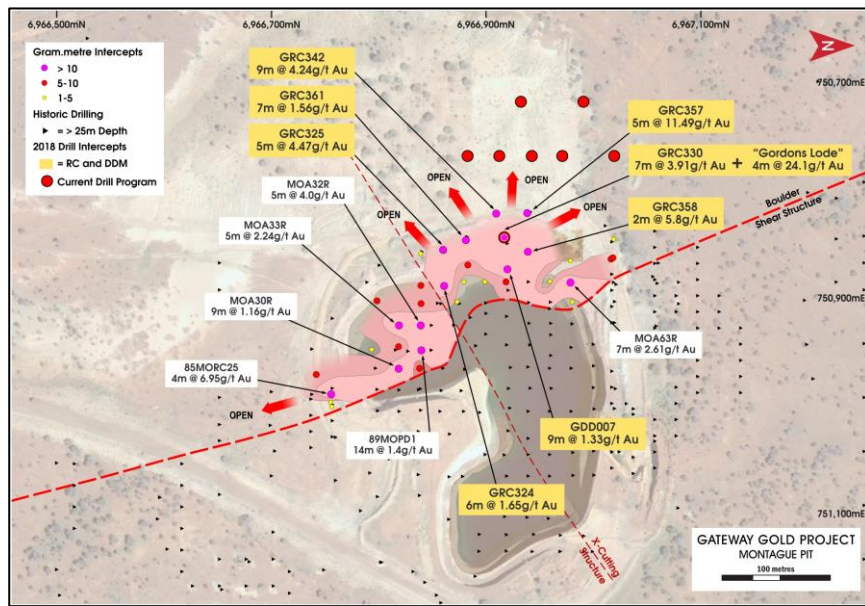


Figure (3): Montague Gold Project Gold Distribution Plan

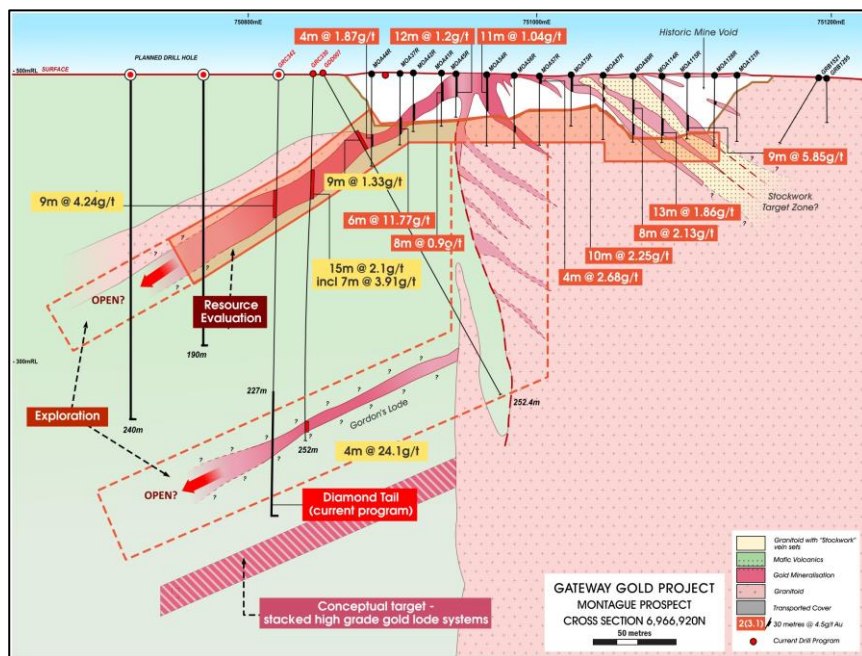


Figure (3): Montague Gold Project Gold Cross-Section

Peter Langworthy  
Managing Director

*For and on behalf of*  
**GATEWAY MINING LIMITED**

**Competent Person Statement:** The information in this report that relates to Exploration Results or Mineral Resources is based on information compiled or reviewed by Mr Peter Langworthy who is a full-time employee of Gateway Mining Ltd and is a current Member of the Australian Institute of Mining and Metallurgy. Mr Peter Langworthy has sufficient experience, which is relevant to the style of mineralisation and types of deposit under consideration and to the activities undertaken, to qualify as a Competent Person as defined in the 2012 Edition of the "Australasian Code of Reporting of Exploration Results, Mineral Resources and Ore Reserves". Mr Langworthy consents to the inclusion in the report of the matters based on the information in the form and context in which it appears.

## APPENDIX (1): TABLE OF SIGNIFICANT DRILLING INTERSECTIONS

Whistler Gold Deposit Significant Drilling Results											
Prospect	HoleJD	MGA_E	MGA_N	RL	Dip	Azi	EOH (m)	From (m)	To (m)	Width (m)	Au (g/t)
Whistler	GRC0343	751728	6968140	500	-59	270	263	198	204	6	14.5
Whistler	GRC0344	751703	6968059	500	-50	270	143	103	111	8	1.1
Whistler	GRC0345	751712	6968060	500	-59	272	183	125	157	32	1.2
Whistler	GRC0346	751710	6968142	500	-60	270	243	149	170	21	5.3
								177	178	1	19.9
								186	187	1	5.3
Whistler	GRC0350	751742	6968055	500	-60	270	263	-	-	-	NSR
Whistler	GRC0353	751696	6968090	500	-50	270	111	100	111	11	1.8
Whistler	GRC0354	751698	6968123	500	-57	270	177	119	134	15	4.5
Whistler	GRC0355	751698	6968112	500	-56	270	153	114	132	18	2.9
Whistler	GRC0356	751699	6968087	500	-58	272	177	126	152	26	2.6
Whistler	GRC0364	751726	6968130	500	-58	272	245	190	198	8	6.0

*GRC0348, GRC0351 and GRC352 were drilled as RC pre-collars in anticipation of follow-up diamond drilling.*

*All holes reported as downhole widths*

Significant Drilling Results from Montague											
Prospect	HoleJD	MGA_E	MGA_N	RL	Dip	Azi	EOH (m)	From (m)	To (m)	Width (m)	Au (g/t)
Montague	GRC0342	750820	6966910	504	-90	0	227	89	98	9	4.24
Montague	GRC0357	750820	6966941	503	-90	0	130	104	109	5	11.49
Montague	GRC0358	750820	6966941	503	-60	90	111	75	77	2	5.8
Montague	GRC0359	750857	6966840	500	-90	0	124	86	88	2	1.58
Montague	GRC0360	750857	6966840	500	-60	90	105	64	67	3	2.16
Montague	GRC0361	750843	6966882	502	-90	0	124	78	85	7	1.56
Montague	GRC0362	750843	6966882	502	-60	90	99	53	58	5	0.9



## APPENDIX (2): SIGNIFICANT DRILLING INTERSECTIONS

JORC Code, 2012 Edition

Table 1

### Section 1 Sampling Techniques and Data (Criteria in this section apply to all succeeding sections)

Criteria	JORC Code explanation	Commentary
<b>Sampling techniques</b>	<ul style="list-style-type: none"> <li>Nature and quality of sampling (e.g. cut channels, random chips, or specific specialised industry standard measurement tools appropriate to the minerals under investigation, such as down hole gamma sondes, or handheld XRF instruments, etc.). These examples should not be taken as limiting the broad meaning of sampling.</li> <li>Include reference to measures taken to ensure sample representivity and the appropriate calibration of any measurement tools or systems used.</li> <li>Aspects of the determination of mineralisation that are Material to the Public Report.</li> <li>In cases where 'industry standard' work has been done this would be relatively simple (e.g. 'reverse circulation drilling was used to obtain 1 m samples from which 3 kg was pulverized to produce a 30 g charge for fire assay'). In other cases more explanation may be required, such as where there is coarse gold that has inherent sampling problems. Unusual commodities or mineralisation types (e.g. submarine nodules) may warrant disclosure of detailed information.</li> </ul>	<ul style="list-style-type: none"> <li>RC drilling - 2kg - 3kg samples were split from dry 1m bulk samples. The sample was initially collected from the cyclone in an inline collection box with independent upper and lower shutters. Once the metre was completed, the drill bit was lifted off the bottom of the hole, to create a gap between samples, when the gap of air came into the collection box the top shutter was closed off. Once the top shutter was closed, the bottom shutter was opened, and the sample was dropped under gravity thorough a Metzke cone splitter. Once drilling reached fresh rock a fine spray of water was used to suppress dust and limit the loss of fines thorough the cyclone chimney. A second 2kg-3kg sample was collected at the same time the original sample. This sample has been stored on site. These duplicate samples have been retained for follow up analysis and test work. The bulk sample of the main ore zone was discharged from the cyclone directly into green bags.</li> <li>The bulk sample from the waste was collected in wheelbarrows and dumped into neat piles on the ground.</li> <li>During the sample collection process, the cone split, original and duplicate calico samples and the reject green bag samples were weighed to test for bias's and sample recoveries. The majority of the check work was undertaken through the main ore zones.</li> <li>Field duplicates were collected at a ratio of 1:20 through the mineralised zones and collected at the same time as the original sample through the B chute of the cone splitter. OREAS certified reference material (CRM) was inserted at a ratio of 1:20 through the mineralised zone. The grade ranges of the CRM's were selected based on grade populations and economic grade ranges.</li> </ul> <p><i>Historical Drilling:</i></p> <p><b>All information referred in this report not collected in this current program has been accessed through verifying historical company reports and/or available digital databases.</b></p> <p><b>Diamond Drilling:</b> HQ3 and NQ core drilled in fresh rock. Core orientated and mineralised noted and marked for cutting. Sample lengths sampled on 0.5 to 2m intervals and cut to half-core sub-sample collected.</p> <p>Samples were analysed for Au by AAS technique with results greater than 0.5ppm Au re-assayed by Fire Assay. Assays &gt;3g/t Au re-assayed by Screen Fire Assay. This</p>

Criteria	JORC Code explanation	Commentary
		<p><i>methodology was applied to account for a recognized coarse gold component within the mineralised zones.</i></p> <p><b>RC Drilling:</b> Samples were collected on 1m intervals, riffle split and 5m composite samples prepared for assay. Re-assays were undertaken on selected 1m samples.</p> <p><i>Samples sent to ALS in Perth, for 3kg pulverisation for production of homogenous 50g or 30g charge for Au fire assay, multi elements also analysed</i></p>
<b>Drilling techniques</b>	<ul style="list-style-type: none"> <li>Drill type (e.g. core, reverse circulation, open-hole hammer, rotary air blast, auger, Bangka, sonic, etc.) and details (e.g. core diameter, triple or standard tube, depth of diamond tails, face-sampling bit or other type, whether core is oriented and if so, by what method, etc.).</li> </ul>	<ul style="list-style-type: none"> <li>RC – Challenge Drilling drill rig was used. The rig consisted of a Schramm truck mounted RC rig with 1150cfm x 350psi on board compressor, an Airsearch 1800cfm x 900psi on board Booster, and a truck mounted Sullair 900cfm x 350psi auxiliary compressor.</li> </ul> <p><i>Historical Drilling:</i></p> <p><b>All information referred in this report not collected in this current program has been accessed through verifying historical company reports and/or available digital databases.</b></p> <p><b>Diamond Drilling:</b> RC percussion or HQ3 pre-collars were drilled to fresh rock. NQ core drilled for remainder of holes. No details available on drilling rig specifications.</p> <p><b>RC Drilling:</b> RC percussion drilled as pre-collars to fresh rock. No details available on drilling rig specifications.</p>
<b>Drill sample recovery</b>	<ul style="list-style-type: none"> <li>Method of recording and assessing core and chip sample recoveries and results assessed.</li> <li>Measures taken to maximize sample recovery and ensure representative nature of the samples.</li> <li>Whether a relationship exists between sample recovery and grade and whether sample bias may have occurred due to preferential loss/gain of fine/coarse material.</li> </ul>	<ul style="list-style-type: none"> <li>During the RC sample collection process, the cone split, original and duplicate calico samples and the reject green bag samples were weighed to test for bias's and sample recoveries. The majority of the check work was undertaken through the main ore zones. From this process showed that the majority of ore grade samples had recoveries greater than 80%</li> <li>Once drilling reached fresh rock a fine spray of water was used to suppress dust and limit the loss of fines thorough the cyclone chimney.</li> <li>At the end of each metre the bit was lifted off the bottom to separate each metre drilled.</li> <li>The majority of samples were of good quality with ground water having minimal effect on sample quality or recovery.</li> <li>From the collection of recovery data, no identifiable bias exists. Historical Drilling:</li> </ul> <p><b>All information referred in this report not collected in this current program has been accessed through verifying historical company reports and/or available digital databases.</b></p> <p><b>Diamond Drilling:</b> Recoveries in fresh rock are recorded as being satisfactory and that no inherent bias has been introduced from drilling or sampling techniques.</p> <p><b>RC Drilling:</b> There are no records available that capture information on drilling recoveries. Typically a minimum 3kg sample was provided to the laboratory for assay.</p>

Criteria	JORC Code explanation	Commentary
		Samples considered fit for purpose.
<b>Logging</b>	<ul style="list-style-type: none"> <li>Whether core and chip samples have been geologically and geotechnically logged to a level of detail to support appropriate Mineral Resource estimation, mining studies and metallurgical studies.</li> <li>Whether logging is qualitative or quantitative in nature. Core (or costean, channel, etc.) photography.</li> <li>The total length and percentage of the relevant intersections logged.</li> </ul>	<ul style="list-style-type: none"> <li>Reverse circulation chips were washed and stored in chip trays in 1m intervals for the entire length of each hole. Chips were visually inspected and logged to record lithology, weathering, alteration, mineralisation, veining and structure.</li> <li>Data on rock type, deformation, colour, structure, alteration, veining, mineralisation and oxidation state were recorded.</li> <li>Logging is both qualitative and quantitative or semi quantitative in nature.</li> </ul> <p><i>Historical Drilling:</i></p> <p><b>All information referred in this report not collected in this current program has been accessed through verifying historical company reports and/or available digital databases.</b></p> <p><i>Reverse circulation and Aircore chips were washed and stored in chip trays in 1m intervals for the entire length of each hole. Chips were visually inspected and logged to record lithology, weathering, alteration, mineralisation, veining and structure.</i></p> <p><i>Records of samples being wet or dry were taken.</i></p> <p><i>Diamond core was presented and stored in industry standard core boxes. The core was orientated and core loss noted.</i></p> <p><i>Data on rocktype, deformation, colour, structure, alteration, veining, mineralisation and oxidation state were recorded. RQD, magnetic susceptibility and core recoveries were recorded.</i></p> <p><i>Logging is considered both qualitative and quantitative or semi-quantitative in nature.</i></p> <p><i>The logging information is considered to be fit for purpose.</i></p>
<b>Sub-sampling techniques and sample preparation</b>	<ul style="list-style-type: none"> <li>If core, whether cut or sawn and whether quarter, half or all core taken.</li> <li>If non-core, whether riffled, tube sampled, rotary split, etc. and whether sampled wet or dry.</li> <li>For all sample types, the nature, quality and appropriateness of the sample preparation technique.</li> <li>Quality control procedures adopted for all sub-sampling stages to maximise representivity of samples.</li> <li>Measures taken to ensure that the sampling is representative of the in situ material collected, including for instance results for field duplicate/second-half sampling.</li> <li>Whether sample sizes are appropriate to the grain size of the material being sampled.</li> </ul>	<ul style="list-style-type: none"> <li>Samples were split from dry, 1m bulk sample via a cone splitter directly from the cyclone.</li> <li>The QC procedure adopted through the process includes: <ul style="list-style-type: none"> <li>Weighing both calicos and reject sample to determine sample recovery and check for sampling bias.</li> <li>Field duplicates were collected at a rate of 1:25, these were collected during RC drilling at the same time as the primary sample.</li> <li>OREAS certified material (CRM) was inserted at a rate of 1:25, the grade ranges of the CRM's were selected based on grade populations.</li> </ul> </li> <li>2-3kgs of sample was submitted to the laboratory.</li> <li>Samples oven dried at 10gdegC then pulverized in LM5 mills to 85% passing 75micron.</li> <li>All samples were analysed for Au using the Au-AA26 technique which is a 50g lead collection fire assay.</li> <li>Quality control for maximising representivity of samples included sample weights,</li> </ul>

Criteria	JORC Code explanation	Commentary
		<p>insertion of field duplicates and laboratory duplicates.</p> <p>Historical Drilling:</p> <p><b><i>All information referred in this report not collected in this current program has been accessed through verifying historical company reports and/or available digital databases.</i></b></p> <p>RC samples were split using a riffle splitter. 1m samples were collected and 5m composites prepared for assay. Re-assays were undertaken on selected 1m samples.</p> <p>Typically 3kg samples were submitted to the assay laboratory.</p> <p>Only minor numbers of samples are recorded as being wet.</p> <p>QA/QC data is not currently available.</p> <p>Sampling processes are considered fit for purpose.</p> <p>Diamond core was presented and stored in industry standard core boxes. The core was orientated and core loss noted. Once logged the core was marked up for sampling ranging from 0.5m to 2.0m largely matching geological contacts. Half core samples were collected and submitted to the assay laboratory.</p> <p>Samples were analysed for Au by AAS technique with results greater than 0.5ppm Au re-assayed by Fire Assay. Assays &gt;3g/t Au re-assayed by Screen Fire Assay. This methodology was applied to account for a recognized coarse gold component within the mineralised zones.</p>
<p><b>Quality of assay data and laboratory tests</b></p>	<ul style="list-style-type: none"> <li>• <i>The nature, quality and appropriateness of the assaying and laboratory procedures used and whether the technique is considered partial or total.</i></li> <li>• <i>For geophysical tools, spectrometers, handheld XRF instruments, etc., the parameters used in determining the analysis including instrument make and model, reading times, calibrations factors applied and their derivation, etc.</i></li> <li>• <i>Nature of quality control procedures adopted (e.g. standards, blanks, duplicates, external laboratory checks) and whether acceptable levels of accuracy (i.e. lack of bias) and precision have been established.</i></li> </ul>	<ul style="list-style-type: none"> <li>• Drill samples were submitted to ALS (Perth). All samples were analysed by a 50g fire assay (AAS finish) which is a total assay.</li> <li>• Ore zones were also submitted for accelerated cyanide leachwell test work. This involves a 2000g leach with AAS finish.</li> <li>• Field duplicates were collected at a rate of 1:25 with CRM's inserted at a rate of 1:25 also. The grade ranges of the CRM's were selected based on grade populations.</li> </ul> <p>Historical Drilling:</p> <p><b><i>All information referred in this report not collected in this current program has been accessed through verifying historical company reports and/or available digital databases.</i></b></p> <p><i>All samples were assayed at either Analabs or ALS in Perth.</i></p> <p><i>Samples were analysed for Au by AAS technique with results greater than 0.5ppm Au re-assayed by Fire Assay. Assays &gt;3g/t Au re-assayed by Screen Fire Assay. This methodology was applied to account for a recognized coarse gold component within the mineralised zones.</i></p>



Criteria	JORC Code explanation	Commentary
		<p><i>QA/QC data is not currently available.</i></p> <p><i>Sampling processes are considered fit for purpose.</i></p>
<b>Verification of sampling and assaying</b>	<ul style="list-style-type: none"> <li>• <i>The verification of significant intersections by either independent or alternative company personnel.</i></li> <li>• <i>The use of twinned holes.</i></li> <li>• <i>Documentation of primary data, data entry procedures, data verification, data storage (physical and electronic) protocols.</i></li> <li>• <i>Discuss any adjustment to assay data.</i></li> </ul>	<ul style="list-style-type: none"> <li>• Drilling results are cross checked by company geologists and consulting geologists (OMNI GeoX Pty Ltd.)</li> <li>• Data is recorded digitally at the project within standard industry software, assay results received digitally also.</li> <li>• All data is stored within a suitable database.</li> </ul> <p>Historical Drilling:</p> <p><b><i>All information referred in this report not collected in this current program has been accessed through verifying historical company reports and/or available digital databases.</i></b></p> <p>Logging and sampling were recorded directly into a Stratalog T500 digital logging unit.</p> <p>All drilling information is currently stored in a Gateway Access database.</p> <p>All information has been plotted on section and in plan to match against neighbouring holes and determine likely validity of the data</p> <p>QA/QC data is not currently available.</p> <p>Sampling and assay data are considered fit for purpose.</p>
<b>Location of data points</b>	<ul style="list-style-type: none"> <li>• <i>Accuracy and quality of surveys used to locate drill holes (collar and down-hole surveys), trenches, mine workings and other locations used in Mineral Resource estimation.</i></li> <li>• <i>Specification of the grid system used.</i></li> <li>• <i>Quality and adequacy of topographic control.</i></li> </ul>	<ul style="list-style-type: none"> <li>• Drill hole location is initially recorded with a handheld Garmin GPS (+/- 3m) and will eventually be recorded by Digital GPs (+/-1cm). A Reflex EZ North Seeking Gyro is used to record the deviation of the drill holes (+/- 1deg)</li> </ul> <p>Historical Drilling:</p> <p><b><i>All information referred in this report not collected in this current program has been accessed through verifying historical company reports and/or available digital databases.</i></b></p> <p><i>A truncated AMG grid was established across the project area and hole collars were measure from fixed survey pegs. These collar locations have been validated using detailed aerial photography.</i></p> <p><i>Downhole surveys were undertaken with an Eastman single shot camera on intervals ranging from 30 to 50m.</i></p> <p><i>Location data is considered fit for purpose.</i></p>
<b>Data spacing and distribution</b>	<ul style="list-style-type: none"> <li>• <i>Data spacing for reporting of Exploration Results.</i></li> <li>• <i>Whether the data spacing and distribution is sufficient to establish the degree of geological and grade continuity appropriate for the Mineral Resource and Ore Reserve estimation procedure(s) and classifications applied.</i></li> <li>• <i>Whether sample compositing has been applied.</i></li> </ul>	<ul style="list-style-type: none"> <li>• Refer to tables within text for data spacing.</li> <li>• Holes drilled within this program in combination with the historical holes and their related samples are deemed to be appropriate for resource estimation.</li> </ul> <p>Historical Drilling:</p>

Criteria	JORC Code explanation	Commentary
		<p><b>All information referred in this report not collected in this current program has been accessed through verifying historical company reports and/or available digital databases.</b></p> <p>Please See Table 1 for Results</p> <p>Drilling at the Whistler, Montague and Caledonian targets have been drill tested in various spacings. Typically immediately below the historical open pit mines the spacing is a nominal 25 x 25m and as the drilling moves deeper and along strike expands to 25 x 50m and 50 x 50m.</p>
<b>Orientation of data in relation to geological structure</b>	<ul style="list-style-type: none"> <li>Whether the orientation of sampling achieves unbiased sampling of possible structures and the extent to which this is known, considering the deposit type.</li> <li>If the relationship between the drilling orientation and the orientation of key mineralised structures is considered to have introduced a sampling bias, this should be assessed and reported if material.</li> </ul>	<ul style="list-style-type: none"> <li>Drill lines were orientated perpendicular to the perceived strike of the mineralized structure. Drilling at Whistler intercepts mineralisation at an oblique angle to the dip (~15deg off). The orientation of drilling is suitable for the mineralisation style and orientation of mineralisation.</li> </ul> <p>Historical Drilling:</p> <p><b>All information referred in this report not collected in this current program has been accessed through verifying historical company reports and/or available digital databases.</b></p> <p>Drilling directions at Whistler, Montague and Caledonian targets have been drilled perpendicular to strike (90-270) and in the across dip direction in most cases.</p> <p>The majority of holes have been drilled at a 60 to 90 degree dip and intersected the mineralisation at an appropriate angle.</p> <p>In some cases reverse angled holes have been completed to test for short range controls on the gold mineralisation.</p> <p>The orientation of the drilling is suitable for the mineralisation style and orientation of the mineralisation at the Whistler, Montague and Caledonian Targets.</p>
<b>Sample security</b>	<ul style="list-style-type: none"> <li>The measures taken to ensure sample security.</li> </ul>	<ul style="list-style-type: none"> <li>Calico samples are sealed into green/poly weave bags and cable tied. These are then sealed in bulka bags and transported to the laboratory in Perth by company staff or trusted contractors or established freight companies.</li> </ul> <p>Historical Drilling:</p> <p><b>All information referred in this report not collected in this current program has been accessed through verifying historical company reports and/or available digital databases.</b></p> <p>No information.</p>
<b>Audits or reviews</b>	<ul style="list-style-type: none"> <li>The results of any audits or reviews of sampling techniques and data.</li> </ul>	<ul style="list-style-type: none"> <li>Drilling results are cross checked by company geologists and consulting geologists (OMNI GeoX Pty Ltd.)</li> </ul>

Criteria	JORC Code explanation	Commentary
		<p><i>Historical Drilling:</i></p> <p><b>All information referred in this report not collected in this current program has been accessed through verifying historical company reports and/or available digital databases.</b></p>

## Section 2 Reporting of Exploration Results

(Criteria listed in the preceding section also apply to this section.)

Criteria	JORC Code explanation	Commentary
<i>Mineral tenement and land tenure status</i>	<ul style="list-style-type: none"> <li>Type, reference name/number, location and ownership including agreements or material issues with third parties such as joint ventures, partnerships, overriding royalties, native title interests, historical sites, wilderness or national park and environmental settings.</li> <li>The security of the tenure held at the time of reporting along with any known impediments to obtaining a licence to operate in the area.</li> </ul>	<ul style="list-style-type: none"> <li>The Whistler gold deposit is situated on Mining Lease M57/217 which is held 100% by Gateway Mining Ltd.</li> </ul>
<i>Exploration done by other parties</i>	<ul style="list-style-type: none"> <li>Acknowledgment and appraisal of exploration by other parties.</li> </ul>	<ul style="list-style-type: none"> <li>Whistler open cut was mined from November 1990 (Polaris Pacific NL) and ore was toll treated through the Herald mill. Little attention was paid to mineralisation other than gold.</li> </ul>
<i>Geology</i>	<ul style="list-style-type: none"> <li>Deposit type, geological setting and style of mineralisation.</li> </ul>	<ul style="list-style-type: none"> <li>The Whistler orebody is a N-S shear zone hosted at the contact between basalt (east) and granodiorite (west) that contains an array of NNE-striking quartz veins arranged <i>en echelon</i>.</li> </ul>
<i>Drill hole Information</i>	<ul style="list-style-type: none"> <li>A summary of all information material to the understanding of the exploration results including a tabulation of the following information for all Material drill holes: <ul style="list-style-type: none"> <li>easting and northing of the drill hole collar</li> <li>elevation or RL (Reduced Level – elevation above sea level in metres) of the drill hole collar</li> <li>dip and azimuth of the hole</li> <li>down hole length and interception depth</li> <li>hole length.</li> </ul> </li> <li>If the exclusion of this information is justified on the basis that the information is not Material and this exclusion does not detract from the understanding of the report, the Competent Person should clearly explain why this is the case.</li> </ul>	<ul style="list-style-type: none"> <li>Exploration drill results are contained with Table 1</li> </ul>
<i>Data aggregation methods</i>	<ul style="list-style-type: none"> <li>In reporting Exploration Results, weighting averaging techniques, maximum and/or minimum grade truncations (eg cutting of high grades) and cut-off grades are usually Material and should be stated.</li> <li>Where aggregate intercepts incorporate short lengths of high grade results and longer lengths of low grade results, the procedure used for such aggregation should</li> </ul>	<ul style="list-style-type: none"> <li>The minimum grade truncation was set at 1g/t. There was no maximum grade truncation given to these set of exploration results.</li> </ul>

Criteria	JORC Code explanation	Commentary
	<p><i>be stated and some typical examples of such aggregations should be shown in detail.</i></p> <ul style="list-style-type: none"> <li><i>The assumptions used for any reporting of metal equivalent values should be clearly stated.</i></li> </ul>	
<i>Relationship between mineralisation widths and intercept lengths</i>	<ul style="list-style-type: none"> <li><i>These relationships are particularly important in the reporting of Exploration Results.</i></li> <li><i>If the geometry of the mineralisation with respect to the drill hole angle is known, its nature should be reported.</i></li> <li><i>If it is not known and only the down hole lengths are reported, there should be a clear statement to this effect (eg 'down hole length, true width not known').</i></li> </ul>	<ul style="list-style-type: none"> <li>Drill lines were orientated perpendicular to the perceived strike of the mineralized structure. Drilling at Whistler intercepts mineralisation at an oblique angle to the dip (~15deg off). The orientation of drilling is suitable for the mineralisation style and orientation of mineralisation.</li> </ul>
<i>Diagrams</i>	<ul style="list-style-type: none"> <li><i>Appropriate maps and sections (with scales) and tabulations of intercepts should be included for any significant discovery being reported These should include, but not be limited to a plan view of drill hole collar locations and appropriate sectional views.</i></li> </ul>	<ul style="list-style-type: none"> <li>Appropriate maps and sections are included in the announcement</li> </ul>
<i>Balanced reporting</i>	<ul style="list-style-type: none"> <li><i>Where comprehensive reporting of all Exploration Results is not practicable, representative reporting of both low and high grades and/or widths should be practiced to avoid misleading reporting of Exploration Results.</i></li> </ul>	<ul style="list-style-type: none"> <li>The accompanying document is considered to be a balanced report with a suitable cautionary note.</li> </ul>
<i>Other substantive exploration data</i>	<ul style="list-style-type: none"> <li><i>Other exploration data, if meaningful and material, should be reported including (but not limited to): geological observations; geophysical survey results; geochemical survey results; bulk samples – size and method of treatment; metallurgical test results; bulk density, groundwater, geotechnical and rock characteristics; potential deleterious or contaminating substances.</i></li> </ul>	<ul style="list-style-type: none"> <li>Bulk density and leachwell analysis is ongoing and will be reported in due course</li> </ul>
<i>Further work</i>	<ul style="list-style-type: none"> <li><i>The nature and scale of planned further work (eg tests for lateral extensions or depth extensions or large-scale step-out drilling).</i></li> <li><i>Diagrams clearly highlighting the areas of possible extensions, including the main geological interpretations and future drilling areas, provided this information is not commercially sensitive.</i></li> </ul>	<ul style="list-style-type: none"> <li>A first pass inferred resource on the results obtained to date at Whistler</li> <li>Deeper diamond drilling to fully assess the underground potential/extension of the known high grade mineralised core.</li> </ul>