

## **December Quarter Activities Report and Appendix 5B**

Cannindah Resources Limited (**Company**) advises that as a result of an administrative error an incorrect version of the December Quarterly Activities Report and the Appendix 5B were lodged on the ASX Platform on 31 January 2019.

Following discussions with ASX, the correct versions of the reports are now attached.

For further information, please contact:

**Tom Pickett**  
**Executive Chairman**  
**Ph: +61 7 3357 3988**



## Quarterly Activities Report to 31 December 2018

### DECEMBER QUARTER ACTIVITIES:

#### Piccadilly

- During the quarter, the Company conducted further ground-based exploration work after being presented with additional information about the Piccadilly project from Minjar Gold. Minjar developed a crude 3D vein model developed using Leapfrog® software, in an effort to quantify a potential target estimate of the known mineralisation within the Mining Lease ML 1442. Minjar's estimate suggested that across a range of cut off grades, an approximate pre-mining, global, undiluted target within the 3 main known lodes inside the Mining Lease area excluding the surrounding EPM's and down to a depth of 100m could be as follows (refer ASX Announcement of 10<sup>th</sup> October 2018):

**Table: Global Pre-Mining Exploration Target Estimates**

Cut Off Grade	Tonnes	Au (ppm)	Ounces
3.0g/t Au	132,714	4.31	18,458
2.0g/t Au	291,990	3.28	30,926
1.0g/t Au	804,461	2.06	53,440

Cannindah requested geological consultants Terra Search to review the Minjar findings and they concurred with the methodology used in coming to the conclusions. It is noted that the Exploration Target is conceptual in nature as there has been insufficient exploration to define a Mineral Resource. It is uncertain if further exploration will result in the determination of a Mineral Resource<sup>1</sup>.

Much of the higher-grade ore in and around the mining lease area is likely to be in shoot controls. In an effort to better understand the location of these shoot controls the company set out to do a more intensive ground-based magnetic survey, this was completed during the quarter. In an announcement to the ASX on the 9<sup>th</sup> of November 2018 the company indicated that it had requested the commencement of the survey to provide closer spaced survey lines than the existing data provides in an attempt to identify shoot controls. Then, on the 10<sup>th</sup> of January 2019 (which is outside the current reporting period, but quite relevant), the company announced that the survey was completed. While the report is yet to be finalised, the preliminary result revealed an intricate pattern of mineralised structure, host sedimentary units, and faults that had never previously been seen in this much detail.

Two significant points to note from the release were that several faults likely to have displaced gold mineralisation were identified, and a semicircular overprint zone that coincides with an IP chargeability anomaly previously announced by the company, were also identified for the first time. This semicircular feature may be a sulphidic zone related to a previously unrecognised mineralised buried intrusive which is completely separate to the one being explored by the company 1km further south. As such, the company is awaiting the final report and it won't be until the report is finalised that more commentary on this new feature will be available. As always, although the company is dealing in areas of high-grade mineralisation near surface it is not clear whether further drilling exploration will result in the determination of a Mineral Resource. That being said, the ground based magnetic data is now of such detail that individual gold lodes are delineated. Combined with previous gold grade information, this will help Cannindah Resources Limited pin down the higher-grade shoots to assist greatly in the planned future drilling.

- The Piccadilly project has significant exploration potential that continues to get larger as more work is completed, with the La Meridian Cu-Au porphyry target remaining untested by drilling. The historically

<sup>1</sup>

The work completed by Minjar should be viewed as a target estimate of the mining lease only and does not in any way take into consideration of what may have been mined historically or the larger potential exploration target to the south within the exploration ground which surrounds it.

identified Myrtlevalle skarn mineralisation remains poorly tested to date and numerous IP anomalies require further exploration work. As previously stated, Cannindah Resources Limited intends to focus its current exploration effort on the large IP anomaly to the south of the Mining Lease area. The area within the defence ground, which is yet to be adequately tested by ground-based exploration methods, will also be further explored with a view to increasing the potential size of the exploration target.

- The company is continuing discussions with parties interested in obtaining gold ore for processing. No ore was transported under its ore purchase agreement with Minjar during the quarter, with a small load being collected for processing early in the previous period. There is currently a weather event in Townsville that is temporarily restricting access due to a small landslide on Hervey Range Road (which is the main access road to the project), but this is not likely to significantly impact the Company or its planned future exploration activities.
- Through the quarter, the Company continues moving towards completing its obligations under Phase 2 of the earn-in agreement executed with Piccadilly Gold Mine Holdings Limited.

## Diversification

- In accordance with previous announcements, the Company has pursued diversification opportunities. With the recent success of other listed entities involved in the Hemp sector the board has been pursuing similar opportunities, and during the quarter a distribution agreement was executed with Annabis SRO. This agreement grants the right to distribute Annabis Hemp products (see ASX release 8<sup>th</sup> November 2018). The company had been discussing for some months the potential for a distribution partnership with Annabis SRO, who are one of the European Union's largest exporters of hemp cosmetic products. The company continues to conduct its due diligence in relation to the Annabis products and has engaged the services of a consultant to provide insight into whether the products are compliant for the Australian market. Correspondence with the consultant is ongoing, but the Company is confident that any changes required to ensure compliance will be minor. Annabis is being kept abreast of the compliance review, and at this stage is amenable to making any changes that may be required to ensure compliance.

Annabis is currently active in many EU Countries including the U.K, France, Spain, Italy, and others, along with a few non-EU countries (e.g. Switzerland, Chile, Peru, and now potentially Australia and New Zealand). The operations will be conducted through a subsidiary called Cannindah Bioceuticals Distribution, utilising the expertise of existing board and management and leveraging off their contacts in Australia and other potential future markets. Further updates on the progress of Cannindah Bioceutical Distribution will be provided in due course. Surplus cash flow will be utilised for operations within the company including exploration activity and working capital.

## Corporate

- During the quarter the Company issued 11,000,000 shares to a professional investor to extinguish the short-term unsecured loan that had been drawn the previous quarter
- At the end of the quarter the company had circa \$30,000 in cash and discussions are continuing with Aquis Finance to deliver a solution on future funding and short-term cash requirements.
- The Board is currently working through the usual commercial discussions that occur when certain commercial transactions are contemplated both in terms of capital raising and future commercial opportunities. The company hopes to be able to update shareholders on discussions regarding potential asset purchases, further ore and assets sales, and the prospect of involving interested third parties in mining activity during the coming quarter.



## PROJECTS:

### Piccadilly Project

Cannindah Resources Limited has executed an earn-in agreement with Piccadilly Gold Mine Holdings Limited to gain access to 174.35 km<sup>2</sup> surrounding the mining lease at Piccadilly. As a result of this agreement, EPMs 16198 and 18322 are now under the operational control of Cannindah Resources Limited. (See Fig 1 – map)

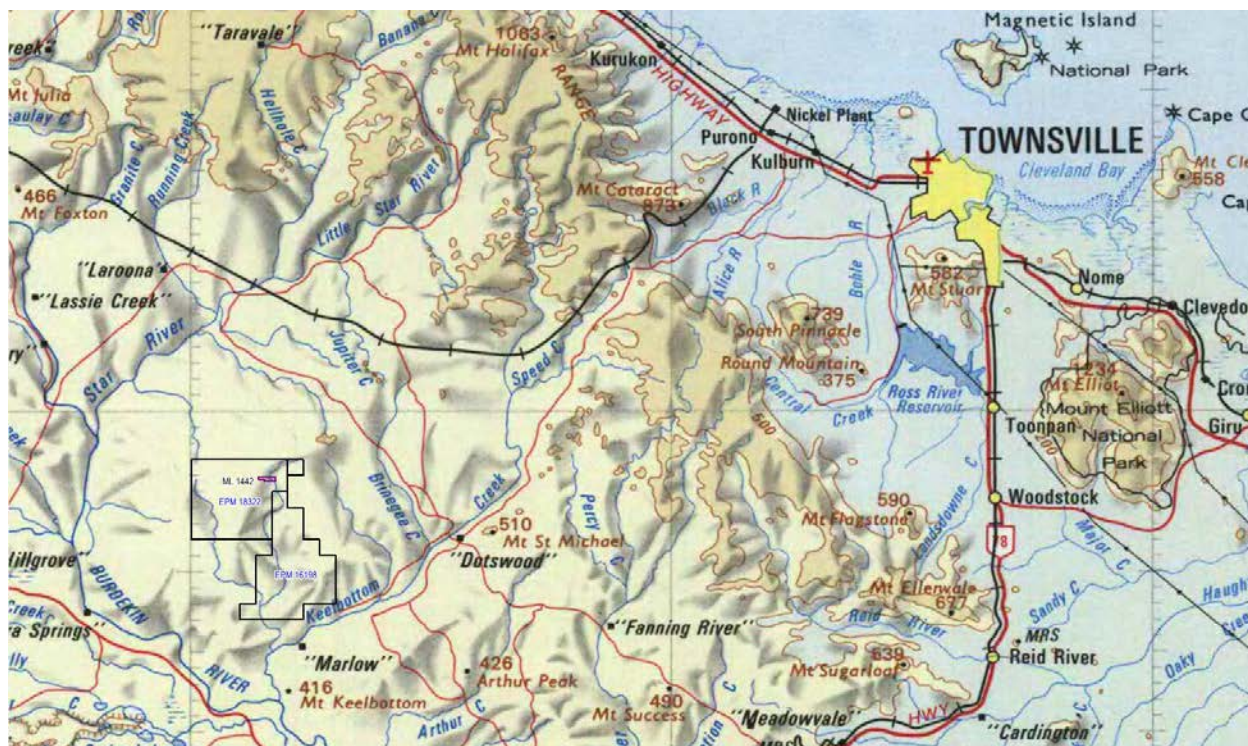


Figure 1: Location of EPM's and Piccadilly Mining Lease.

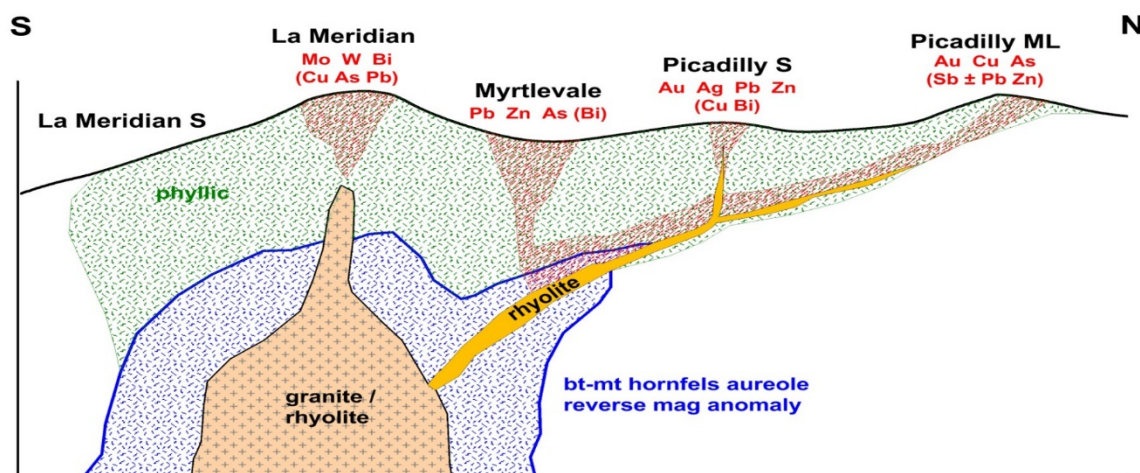
The EPMs surrounding the mining lease have already had significant exploration work completed on them. Cannindah now has the benefit of reviewing this data and complimenting it with the data obtained from exploration completed within the mining lease to date. The high-grade quartz vein material from the mining lease was at first thought to be the only significant gold-bearing material. However, recent work completed by Cannindah Resources Limited has found that the mineralised area is in fact much larger than first thought, and runs across significant widths (e.g. 8m @ 6.99g/t Au from ASX release 25<sup>th</sup> of August 2017). This discovery prompted further consideration of the existing exploration model that Cannindah Resources' consultants Terra Search and Klondike have developed for the Piccadilly Mining District, in which the ultimate source of the gold mineralising fluid is an interpreted intrusive centre located approximately 1.5 km to the south of the mining lease. With the agreement with Piccadilly Gold Mine Holdings Limited, we have now secured the right to explore this area.

Terra Search have been involved in the exploration of the surrounding EPMs for Piccadilly Gold Mine Holdings Limited from the early stages of the program. Dr Gregg Morrison from Klondike Exploration Services has directed his extensive international gold exploration experience to understanding and interpreting the Piccadilly Gold Mining District. Dr Morrison has previously developed mineralisation and zoning models for north Queensland intrusive related gold mines such as Kidston, Mt Leyshon, and Mt Wright, which have cumulatively produced over 7 million ounces of gold. Figure 2 below is the schematic exploration model that Dr Morrison has interpreted for the Piccadilly Mining District on the basis of existing exploration data. Cannindah Resources' consultants consider that the multi-element, geochemical zoning pattern that occurs over several kilometres at Piccadilly is similar in style and scale to the other major north Queensland intrusive gold systems.





**Piccadilly Cross Section Cartoon**



**Figure 2: Schematic Model of Interpreted Intrusive Related mineral system at Piccadilly. Note idealised geological north south cross section, looking west (after Beams & Morrison, 2015)**

Figure 2 shows the Piccadilly Mining Lease to the north, with suggested mineralisation dipping to the south towards the intrusive related source. It is interesting to note that this figure was created some years ago by Dr Morrison, on behalf of Piccadilly Gold Mine Holdings Limited, and that the recent work completed by Cannindah Resources Limited has confirmed that the high-grade gold in the Mining Lease does indeed dip to the south towards this area.

Given the cross-sectional dimension in Figure 2, the interpreted intrusive related gold system target potentially presents Cannindah with a very large, bulk-tonnage gold target area that is drill ready and kilometres in scale. A number of geological, geochemical and geophysical surveys have been completed across the EPMs surrounding the mining lease:

- Rock chip sampling
- Soil sampling
- Geological mapping
- PIMA mineralogical determination
- Ground based magnetic geophysical survey
- Induced Polarisation geophysical survey
- Portable XRF analysis

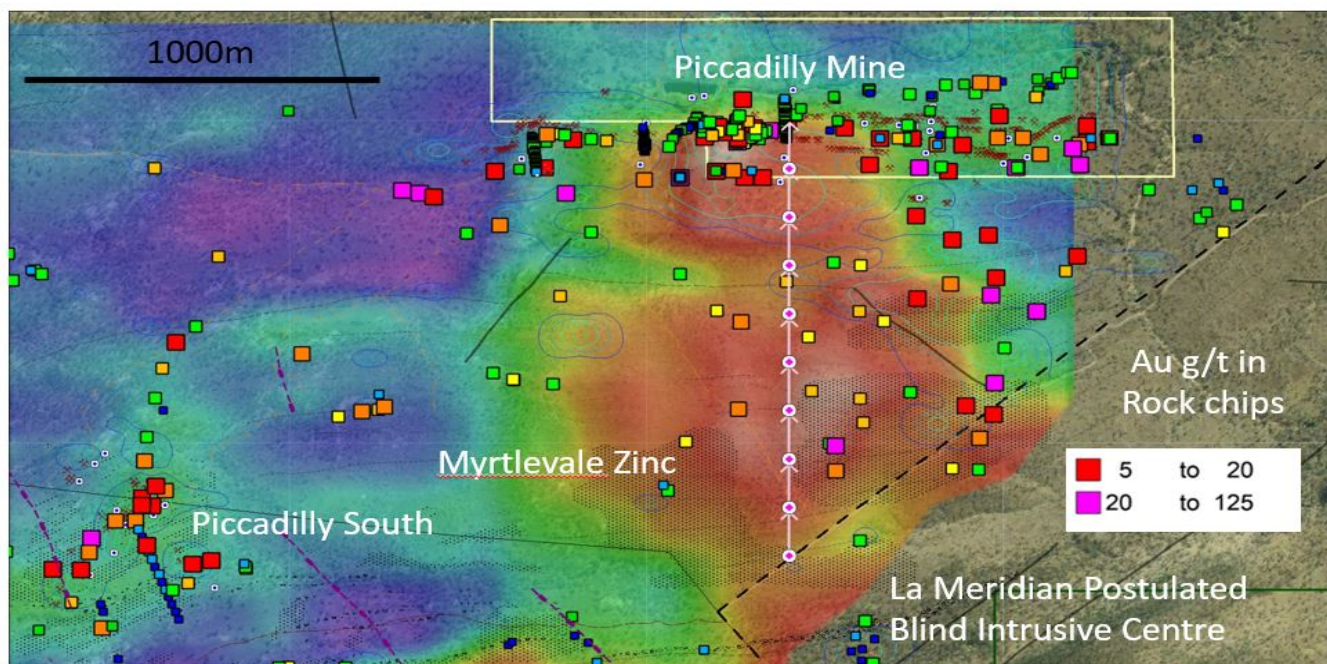
Cannindah Resources Limited has undertaken to review this data in conjunction with work currently being evaluated within the mining lease area to establish a targeted drilling program in the short term. Some 34.8km of IP surveying has been completed, resulting in a clearly defined target zone for the intrusion-centred gold system. Figure 3 is an image of the IP chargeability anomaly modelled at 106m. The image is a predictive model of the intensity of sulphide development that appears concentrated in and south of the ML. The IP anomaly overlaps with an even more extensive area of gold anomalies in both rock chip and soil samples. The line of proposed drill holes shown on Figure 3 commences from the area where Cannindah has confirmed mineralisation within the Mining Lease boundary and steps to the south across the set veins and the south-dipping master structure that is highlighted by the more intense IP anomaly.

Given the high-grade gold material obtained in the recent exploration and announced to the ASX over recent months, Cannindah is very excited to be planning the exploration of this potentially company-making target – a

target that has many times been described by consultants as sharing similar geochemical zoning patterns to major North Queensland intrusive related gold systems such as Kidston, Mt Leyshon, and Mt Wright.

The focus of the company is to develop a drilling program to confirm the existence of a large-scale, bulk-tonnage target that is currently expressed as being kilometres in scale. Concurrently, the company will continue with some small-scale exploration in the mining lease area, generating some tonnage containing high-grade ore that can be sold to Minjar Resources and thereby generate cash flow. Cannindah Resources Limited will continue to work through the significant amount of existing data sets covering the Piccadilly Mining District to ensure that the upcoming drilling is highly targeted and expands outwards from known mineralisation.

We are very focussed on delivering a great outcome for shareholders over the coming weeks and months ahead as further work occurs in relation to the EPM area along with the ML.



**Figure 3. Image of modelled IP Chargeability at a depth slice of 106m below surface , overlain with surface rock chip colour coded gold values.**



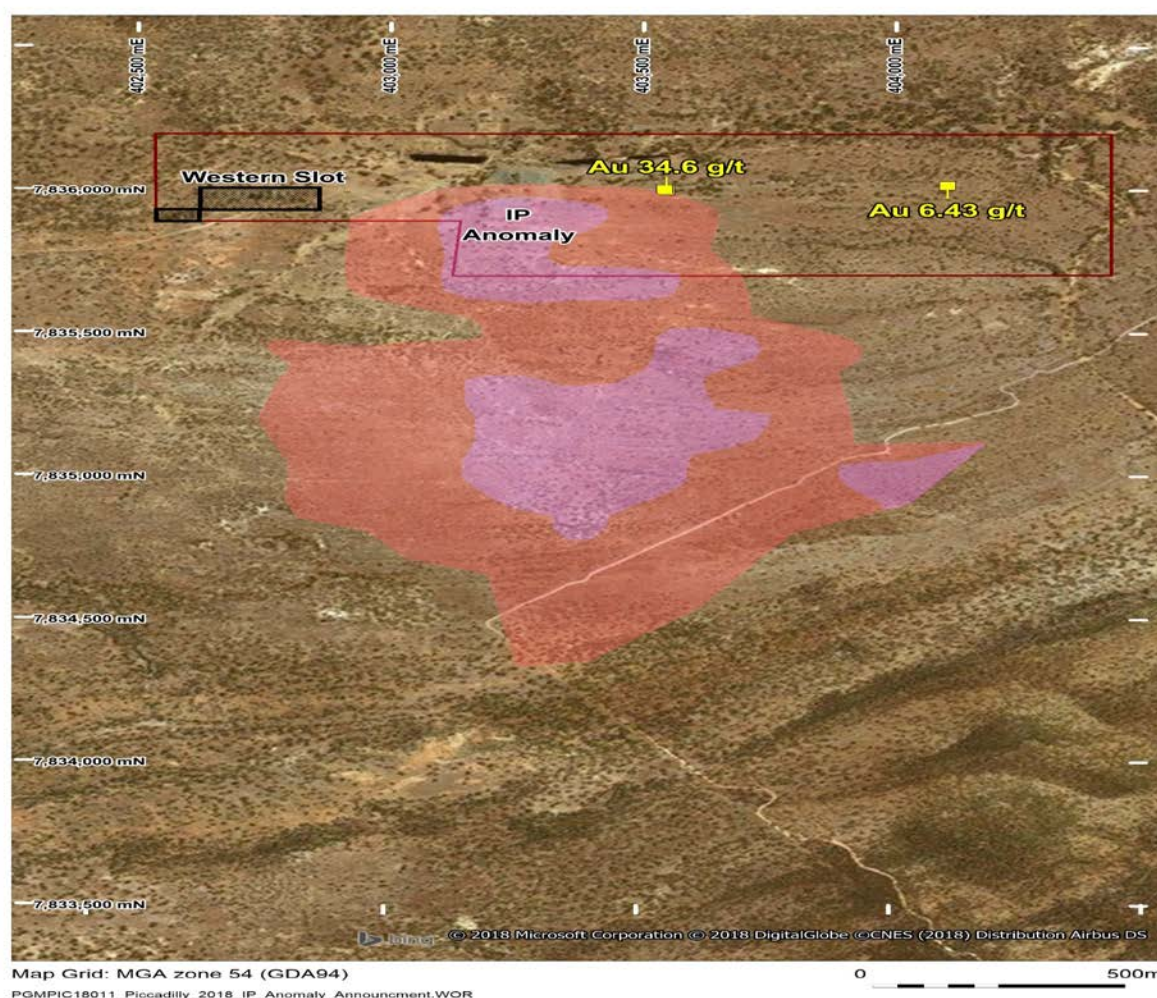


Figure 4: Location of Second Trench Relative to Western Slot

## Mount Cannindah Project

*Located approx. 100km south of Gladstone, Qld*

- The Mt Cannindah Project represents a large (greater than 9km<sup>2</sup>) high level “porphyry style” Cu-Mo-Au mineralised system. During the quarter, the company outlined further areas of interest (other than the known 5.5Mt @ 0.92% Cu) at Mt Cannindah to interested parties of the project area. Of particular interest is the potential for gold mineralisation within the existing mining lease area, which has previously been underexplored.
- No ground-based exploration was performed on site during the quarter.
- During the quarter the Company completed the process to relinquish EPM 25537.

The following summary of the prospect areas provides an insight into some of the potential for the known target areas within the Cannindah project for further exploration:

### Little Wonder-Midway-Cannindah East Prospects

The presence of a significant breccia fault structure has been confirmed between Little Wonder (LW) and Cannindah East (CE). This structure hosts felsic dykes that have introduced hydrothermal fluids, which have altered and mineralised the fault breccia in proximity to the felsic dykes. High grade Au-Ag veins are known at LW and CE within strong alteration. Both these areas (and Midway) are now drill targets for extensions to mineralisation and to possibly locate high grade veins that could be mined by underground methods.

## **North Mt Cannindah**

It is apparent that the potential northerly extension of the Mt Cannindah mineralisation has not been adequately tested. Several historical shallow holes in this area may not have been deep enough (or were poorly positioned) to test for plunging mineralisation. A very deep angle hole drilled from the west (CARCD003) may not have gone far enough, or could be too deep at this location (about 550m below surface) for a realistic test. The presence of weak mineralisation in DDH017 is encouraging for possible mineralisation continuing to the north or north-east.

Also encouraging is that core hole QMCMDD017 shows good Cu-Au-Ag mineralisation at depth below very low grades in DDH019, RC52, CM21 & QMCMRC016, indicating that good mineralisation is deepening to the north-north-east. To test for deeper northerly extensions of the mineralised zone, it is proposed that one or two angle holes be drilled from east to west, to “scissor” the known intercepts in QMCMDD010 & 025. If successful, additional drilling could be done on 25m intervals to provide extensions to the known Cannindah resource area. These E to W holes would also test the Au-Ag intercepts in QMCMDD025 (20m @ 46.4 g/t Au & 98.2 g/t Ag at 245m), in QMCMRC016 (2m @ 2.54 g/t Au, 8.9 g/t Ag & 0.39% Cu from 16 to 18m, and 3m @ 5.28 g/t Au, 7.2 g/t Ag & 0.32% Cu from 25-28m), in RC53 (4m @ 1.8 g/t Au from 116 to 120m), and in CM21 (10m @ 2.29 g/t Au, 12.6 g/t Ag & 0.33% Cu from 12 to 22m).

## **East Ridge (Blockade) Prospect**

The significance of the three MIM holes and Newcrest’s MC002 is that they show the East Ridge contains sporadic anomalous gold, silver, and copper mineralisation within the altered angular breccia that makes up much of this East Ridge. Combined with the presence of old gold workings (Blockade), local anomalous soils, and a deep IP anomaly, this makes this East Ridge area a potential target for deeper Cu-Ag-Au mineralisation. It is possible the altered breccia over the East Ridge is actually an upper “alteration plume” that could zone downward into significant mineralisation with higher sulphide content in breccia and veins.

It is surprising that west azimuth angle holes were not used in the past to test the Mt Cannindah “ore zone” by drilling under the East Ridge (Blockade Mine). It is proposed that reconnaissance and research be done in this area, including two or three IP lines. If further encouragement can be raised for this Blockade area, then two or three angle holes could be drilled to the west under the central part of this ridge.

## **South Mt Cannindah & Mt Theodore**

**South Mt Cannindah:** The previous drilling immediately south of the “ore body” at Mt Cannindah shows narrower zones of weak copper and gold mineralisation (about 0.40 to 0.60% Cu and 0.1 to 1.0 g/t Au & 3 to 5 g/t Ag) extending for about 50 to 75m south (see DDH012 & 032 and QMCMDD009 and CARCD001). There is a short gap due to a failed drill hole (DDH013), before mineralisation picks up from 150 to 250m in three holes close to Mt Theodore (see DDH016 & 027 and CARCD004). The intercept in hole DDH016 is the most significant with 14.3m @ 1.64% Cu, 0.67 g/t Au & 28.4 g/t Ag (including 8.2m @ 2.33% Cu, 0.73 g/t Au & 32.6 g/t Ag). This DDH016 intercept is at 200m vertical depth and lies beneath a much weaker zone in DDH015, which is at 50m vertical depth. This provides encouragement that the grade and thickness of mineralisation is increasing with depth. The intercept in DDH027, which is located 65m south of DDH016, continues this zone with 18.5m @ 0.75% Cu, about 0.2 g/t Au, & ~11 g/t Ag at 100m vertical depth. Within the DDH027 intercept there are three narrow high-grade intervals (0.5 to 1.0m) with 2.4 to 6.6% Cu, 0.31 to 1.55 g/t Au, & 28 to 54 g/t Ag. The mineralised zone in CARCD004 appears to be a separate zone, which is more a gold zone rather than a copper and silver zone as in DDH016 & 027. This broad gold zone in CARCD004 could be related to the alteration centred on Mt Theodore (see below). The mineralised zone in DDH016 should have been intersected deep in CARCD004 at about 300m vertical depth. The fact that this did not happen means that the mineralised zones in DDH016 & 027 have either been faulted out of this projected position,



or it has weakened considerably at this location. This could be a case of fluids just not accessing the “structure” at this location due to lack of dilation or other controls such as dyke emplacement.

**Mt Theodore:** Although Mt Theodore is made up of strongly brecciated rock, it is a relatively high hill due to the strong alteration that has healed the breccia and made it resistant to erosion. This alteration is related to at least two felsic dykes that intrude the breccia on Mt Theodore. The altered breccia contains significant sulphide mineralisation that, based on analysis, would appear to be mostly pyrite. However, there is some gold anomalism that is present in the soils, and locally in the rock, that was the focus of early miners. Some low-level copper is also present in soils. The presence of sulphides at depth is supported by two IP lines that show moderate chargeability responses under Mt Theodore.

The potential for gold mineralisation under Mt Theodore is enhanced by hole CARCD004 which is located about 150m NNE of Mt Theodore. CARCD004 contains an intercept of 75m @ 0.23 g/t Au, at a vertical depth of 250m. It could be this is the outer fringe of what may lie beneath Mt Theodore. The high Cu-Au-Ag intercepts in holes DDH016 & 027 lie just to the north-east of Mt Theodore, and may be present at depth along the east side of Mt Theodore.

No drill holes have tested under Mt Theodore, and no explanation is made for the large volume of alteration. It is possible this alteration is a cap or plume above significant Au-Ag and Cu-Au-Ag mineralisation in a vein-breccia system associated with felsic dykes. It is proposed that a significant effort be made to test for deeper mineralisation to the south of Mt Cannindah, and in particular under Mt Theodore. This should entail the use of an IP/resistivity survey looking to depth (~300m), followed by moderately deep drilling to test chargeability anomalies and specifically under the alteration zone at Mt Theodore.

### **Apple Tree**

The Apple Tree prospect is a broad fault breccia zone that has been intruded by multiple felsic dykes that have released hydrothermal fluids into the breccia, adjacent to the dyke contacts. The fluids have provided significant copper, silver, gold, and molybdenum into the re-fractured and brecciated altered rock. The zone of known mineralisation is up to 800 metres long and 50 metres wide and none of the earlier drilling has tested below about 36 metres depth. A deep IP chargeability response is present, opening up the possibility for a deeply mineralised system. It is proposed that a detailed IP survey be conducted over Apple Tree with the aim of defining drill targets at depth and along strike.

### **United Allies**

The United Allies prospect has several historical high-grade copper drill intercepts that appear to be associated with felsic dykes and related hydrothermal alteration and mineralisation. The dykes have intruded into structures within a broad polymict breccia zone that is thought to trend NE-SW.

The breccia has undergone variable argillic to phyllic alteration with local silicic alteration that has healed the breccia. It is noted that the alteration in the Newcrest core hole (MC004) appears to be stronger and more widespread than the alteration seen in the trenches. Almost all of the breccia in the MC004 appears to be strongly altered, whereas the surface trenches show local zones of alteration within larger areas of clayey matrix breccia (thought to be a fault breccia). Hence, the more pervasive alteration in MC004 may indicate a strengthening of alteration with depth.

A very deep IP response occurs beneath United Allies on the IP sections produced by GeoDiscovery in 2011. This needs further reprocessing work.

The presence of higher copper assays with maroon coloured limonite at around 100m downhole in MC004 (est. ~70m vertical depth), may indicate deep oxidation and supergene copper mineralisation. This possibility appears to



be supported by several of the MIM holes in the vicinity of MC004, where significant copper mineralisation is present to over 40m depth. The possibility for deeper supergene copper could improve the resource potential of this area.

Most of the early drilling was vertical and did not target the dyke/alteration structures. Hence many holes only returned modest copper results. Where drill holes did intersect dyke edges, the copper grade was generally quite high. It is proposed to drill several angled drill holes to test the dyke/structure contacts at about the level of supergene enrichment. This could add significant resource tonnes for the prospect. An IP survey would also be helpful in trying to define the deep chargeability response seen below United Allies.

#### **Lifesaver, Monument, South Monument, & Dunno**

These four prospects contain significant vein and breccia mineralisation related to structures and felsic dykes that have introduced the hydrothermal solutions. These mineralised structures are closely related to very strong soil assays for copper, gold, and molybdenum throughout the greater area. It is apparent that many of the ridges in this area are underlain by similar mineralised structures.

The presence of good copper and local gold mineralisation in trenches and shallow drill holes at Monument, Lifesaver, and Dunno raise the possibility that these areas could be considered potential open pit targets, as well as possible underground targets for high grade Cu-Au-Ag veins.

It is proposed that shallow angle drilling be done on all of these prospects to better define the mineralised structures. Assuming encouraging results, the shallow drilling could be followed by an IP/resistivity survey to define the mineralised structures to depth. This could then be followed by deeper drilling to test the mineralised structures at depth.

#### **Monument Ridge**

Monument Ridge contains two types of hydrothermal breccia that are associated with faulting and the intrusion of felsic dykes. Gold in soils are strongly anomalous on the central part of the ridge, and an IP chargeability anomaly appears to underlie the ridge. It is likely that altered sulphide-bearing structures occur in the core of Monument Ridge and possibly in several nearby ridges.

The Monument Ridge and other nearby ridges need to be mapped and sampled in more detail to better understand the structural control on potential deeper mineralisation. IP lines could be run at right-angles to ridges at strategic locations, to better define the chargeability responses under the ridges. Ultimately angled drill holes should be used to test for mineralisation underlying the ridges.

#### **Barrimoon Vein**

The sheer size of the Barrimoon vein and alteration structure makes it a viable target for a potential epithermal to mesothermal gold/silver deposit. The length is about 4 kilometres and the width of the shear/vein zone appears to be in the tens of metres.

The other positives for the Barrimoon vein are:

- The moderately anomalous assays for gold (0.05 to 0.21 g/t Au) and arsenic (100s of ppm As) from many rock chip samples at various locations along the vein.
- The presence of gold in gossan shears and veins in Carboniferous sediments at the Golden Crown gold prospect on the east end of the Barrimoon structure.
- The highly anomalous bismuth and tellurium in the rock and trench samples at Golden Crown.



- The presence of felsic dykes intruding into the Barrimoon structure, similar to that seen at Cannindah. This tends to support the connection of the Barrimoon vein to the Cannindah intrusive complex.
- No drilling has tested the vein at the unconformity between the older sediments and younger overlying volcanics (other than at Golden Crown, which is 3-4 km from Cannindah).

Given the apparent high level of this vein in the epithermal-mesothermal system, it is suggested that this vein needs to be tested between 200m to 350m below the present surface. Ideally, drill holes should test just above and just below the level of the unconformity between the Carboniferous sediments and the overlying Triassic andesitic volcanics. The initial drilling could use RC holes angled north-west from the lower slopes on the south side of the vein.

### **Kalpowar Fault**

If the Kalpowar Fault formed before or during the emplacement of the Cannindah Intrusive Complex, then there is a possibility it could be mineralised. More recent movement on this fault has allowed erosion to form the present river valley. Oxidation can be expected to be quite deep in a large fault occupying such a river valley. Thus, any sulphides present would also be oxidised to great depth and would be difficult to detect by IP.

If evidence arises showing the Kalpowar Fault is younger than the Cannindah intrusive complex, then nothing need be done. If, on the other hand, it remains debatable, then further work should be considered to resolve the question and target possible mineralised areas. This work could include the re-assessment of the Newcrest IP/resistivity data, followed by a new IP survey of two or three lines attempting to look deep on the most likely sites. If successful in finding a chargeability anomaly, then drilling could be contemplated.

### **Mount Borium Gold Project**

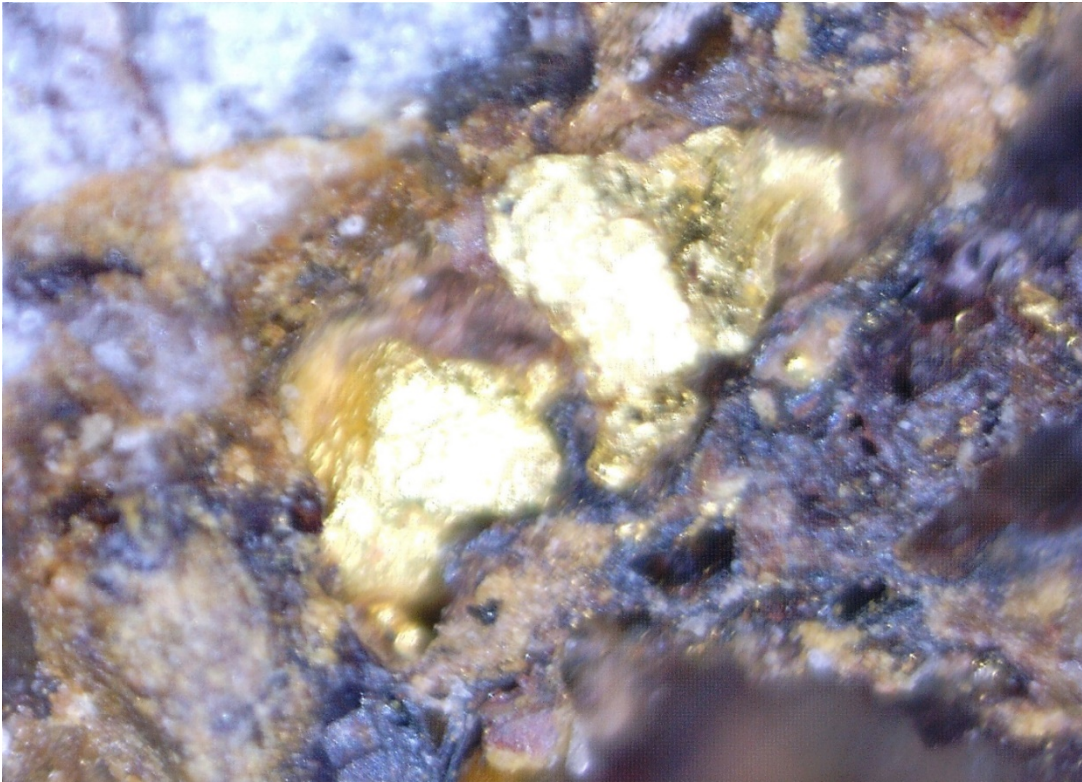
(EPMs 18960, 19009, 19015)

Subsequent to the end of the quarter the relinquishment process for the Mount Borium Gold Project foreshadowed in the previous report was completed.





**Figure 5: Visible Gold in gossanous quartz vein Piccadilly East – West Slot**



**Figure 6: Visible Au Tail in panned concentrate from crushed Piccadilly lode.**







**Figure 7: Visible Au tail in panned concentrate from crushed Piccadilly lode.**



**Figure 8: Close up of visible Au tail in panned concentrate from crushed Piccadilly lode.**







**Figure 9: Close up of visible gold tail in gossanous quartz vein Piccadilly East – West Slot**



**Figure 10: Visible Gold in gossanous quartz vein Piccadilly East – West Slot**



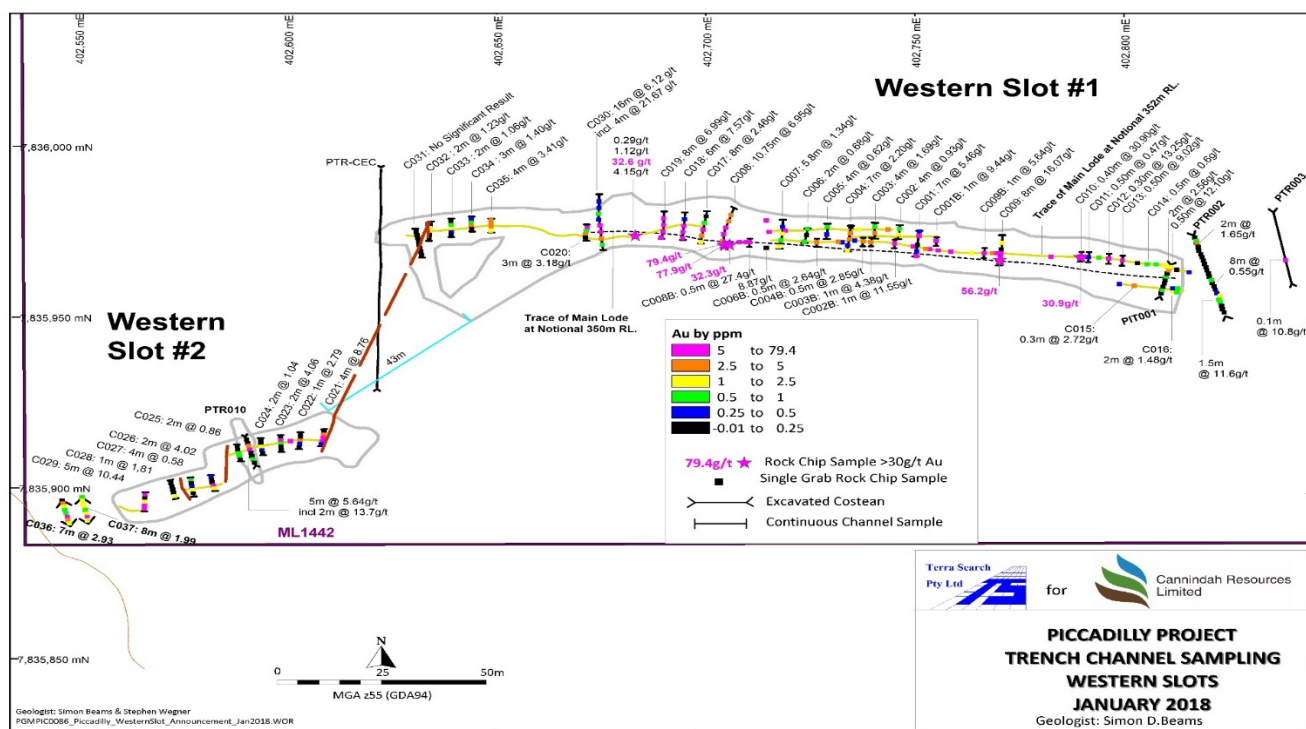




Figure 11: Belt sampling of Piccadilly ore occurring at Pajingo Mill



Figure 12: Channel Sample results from Western Slot# 1 & 2.



**Figure 13: First Piccadilly ore being loaded into the hopper at Pajingo Mill**



## **COMPETENT PERSON STATEMENTS**

*The information in this report that relates to exploration results has been previously released to the ASX and has been reviewed by Mr Laurie Johnson B.Sc (Geology) F.AusIMM who is a Director of Cannindah Resources Limited. Mr Johnson is a member of the Australian Institute of Mining and Metallurgy (AusIMM) and is bound by and follows the Institute's codes and recommended practices. Mr Johnson has sufficient experience of relevance to the styles of mineralisation and the types of deposits under consideration, and to the activities undertaken, to qualify as a Competent Persons as defined in the 2012 Edition of the Joint Ore Reserves Committee (JORC) Australasian Code for Reporting of Exploration Results, Mineral Resources and Ore Reserves. Mr Johnson consents to the inclusion of this information in the form and context in which it appears in this report.*

*The information in this report that relates to exploration targets has been previously released to the ASX and is based on information compiled by Dr. Simon D. Beams, a full-time employee of Terra Search Pty Ltd, geological consultants employed by Cannindah Resources Limited to carry out geological evaluation of the mineralisation potential of the Piccadilly Mining Lease (ML1442) 80 km west of Townsville, Queensland, Australia.*

*Dr. Beams has BSc Honours and PhD degrees in geology; he is a Member of the Australasian Institute of Mining and Metallurgy (Member #107121) and a Member of the Australian Institute of Geoscientists (Member # 2689). Dr. Beams has sufficient relevant experience in respect to the style of mineralization, the type of deposit under consideration and the activity being undertaken to qualify as a Competent Person within the definition of the 2012 Edition of the Australasian Code for Reporting of Exploration Results, Mineral Resources and Ore Reserves ("JORC Code").*

*Dr. Beams consents to the inclusion in the report of the matters based on this information in the form and context in which it appears*

*The information in this report that refers to Mineral Resources has been previously released to the ASX and has been reviewed by Mr Laurie Johnson B.Sc (Geology) F.AusIMM who is a Director of Cannindah Resources Limited. Mr Johnson is a member of the Australian Institute of Mining and Metallurgy (AusIMM) and is bound by and follows the*



Cannindah Resources  
Limited

**ASX RELEASE**

**31 January 2019**

ASX Code: CAE

*Institute's codes and recommended practices. Mr Johnson has sufficient experience of relevance to the styles of mineralisation and the types of deposits under consideration, and to the activities undertaken, to qualify as a Competent Persons as defined in the 2004 Edition of the Joint Ore Reserves Committee (JORC) Australasian Code for Reporting of Exploration Results, Mineral Resources and Ore Reserves. Mr Johnson consents to the inclusion of this information in the form and context in which it appears in this report.*

For further information, please contact:

**Tom Pickett**

**Executive Chairman**

**Ph: 07 3357 3988**



## Appendix 5B

### Mining exploration entity and oil and gas exploration entity quarterly report

Introduced 01/07/96 Origin Appendix 8 Amended 01/07/97, 01/07/98, 30/09/01, 01/06/10, 17/12/10, 01/05/13, 01/09/16

**Name of entity**

<b>CANNINDAH RESOURCES LIMITED</b>
------------------------------------

**ABN**

<b>35 108 146 694</b>
-----------------------

**Quarter ended ("current quarter")**

<b>31 DECEMBER 2018</b>
-------------------------

<b>Consolidated statement of cash flows</b>	<b>Current quarter \$A'000</b>	<b>Year to date (6 months) \$A'000</b>
<b>1. Cash flows from operating activities</b>		
1.1 Receipts from customers	-	7
1.2 Payments for		
(a) exploration & evaluation	(103)	(228)
(b) development	-	-
(c) production	-	-
(d) staff costs	(44)	(88)
(e) administration and corporate costs	(68)	(119)
1.3 Dividends received (see note 3)	-	-
1.4 Interest received	5	5
1.5 Interest and other costs of finance paid	(54)	(57)
1.6 Income taxes paid	-	-
1.7 Research and development refunds	-	-
1.8 Other (provide details if material)	-	-
<b>1.9 Net cash from / (used in) operating activities</b>	<b>(264)</b>	<b>(480)</b>

<b>2. Cash flows from investing activities</b>		
2.1 Payments to acquire:		
(a) property, plant and equipment	-	-
(b) tenements (see item 10)	-	-
(c) investments	-	-
(d) other non-current assets	-	-

<b>Consolidated statement of cash flows</b>		<b>Current quarter \$A'000</b>	<b>Year to date (6 months) \$A'000</b>
2.2	Proceeds from the disposal of:		
	(a) property, plant and equipment	-	-
	(b) tenements (see item 10)	-	-
	(c) investments		
	(d) other non-current assets	-	-
2.3	Cash flows from loans to other entities		
2.4	Dividends received (see note 3)	-	-
2.5	Other (provide details if material)		
<b>2.6</b>	<b>Net cash from / (used in) investing activities</b>	<b>-</b>	<b>-</b>

<b>3.</b>	<b>Cash flows from financing activities</b>		
3.1	Proceeds from issues of shares	242	411
3.2	Proceeds from issue of convertible notes	-	-
3.3	Proceeds from exercise of share options		
3.4	Transaction costs related to issues of shares, convertible notes or options	(3)	(29)
3.5	Proceeds from borrowings	50	120
3.6	Repayment of borrowings	-	-
3.7	Transaction costs related to loans and borrowings		
3.8	Dividends paid	-	-
3.9	Other (provide details if material)	-	-
<b>3.10</b>	<b>Net cash from / (used in) financing activities</b>	<b>289</b>	<b>502</b>

<b>4.</b>	<b>Net increase / (decrease) in cash and cash equivalents for the period</b>		
4.1	Cash and cash equivalents at beginning of period	7	10
4.2	Net cash from / (used in) operating activities (item 1.9 above)	(264)	(480)
4.3	Net cash from / (used in) investing activities (item 2.6 above)	-	-
4.4	Net cash from / (used in) financing activities (item 3.10 above)	289	502
4.5	Effect of movement in exchange rates on cash held	-	-
<b>4.6</b>	<b>Cash and cash equivalents at end of period</b>	<b>32</b>	<b>32</b>

5. <b>Reconciliation of cash and cash equivalents</b> at the end of the quarter (as shown in the consolidated statement of cash flows) to the related items in the accounts	Current quarter \$A'000	Previous quarter \$A'000
5.1     Bank balances	32	7
5.2     Call deposits	-	-
5.3     Bank overdrafts	-	-
5.4     Other (provide details)	-	-
<b>5.5     Cash and cash equivalents at end of quarter (should equal item 4.6 above)</b>	<b>32</b>	<b>7</b>

**6.     Payments to directors of the entity and their associates**

- 6.1     Aggregate amount of payments to these parties included in item 1.2
- 6.2     Aggregate amount of cash flow from loans to these parties included in item 2.3
- 6.3     Include below any explanation necessary to understand the transactions included in items 6.1 and 6.2

Current quarter \$A'000
77
-

Includes salary paid to Executive Chairman and rent, administration and IT services provided by associated entities of a Director.

**7.     Payments to related entities of the entity and their associates**

- 7.1     Aggregate amount of payments to these parties included in item 1.2
- 7.2     Aggregate amount of cash flow from loans to these parties included in item 2.3
- 7.3     Include below any explanation necessary to understand the transactions included in items 7.1 and 7.2

Current quarter \$A'000
-
-

## Mining exploration entity and oil and gas exploration entity quarterly report

8.	<b>Financing facilities available</b> <i>Add notes as necessary for an understanding of the position</i>	<b>Total facility amount at quarter end \$A'000</b>	<b>Amount drawn at quarter end \$A'000</b>
8.1	Loan facilities	3,700	3,464
8.2	Credit standby arrangements	-	-
8.3	Other – Loan from sophisticated investor	120	120
8.4	Include below a description of each facility above, including the lender, interest rate and whether it is secured or unsecured. If any additional facilities have been entered into or are proposed to be entered into after quarter end, include details of those facilities as well.		

The loan from Aquis Finance Pty Ltd has a facility limit of \$3.7 million, is secured and attracts an interest rate of 15% per annum which is capitalised into the loan up to the facility limit. On 29 June 2018, the Company announced that the term of the loan had been extended to 20 May 2019 on the same terms and conditions as the original loan.

9.	<b>Estimated cash outflows for next quarter</b>	<b>\$A'000</b>
9.1	Exploration and evaluation	100
9.2	Development	
9.3	Production	
9.4	Staff costs	40
9.5	Administration and corporate costs	40
9.6	Other (provide details if material)	
9.7	<b>Total estimated cash outflows</b>	<b>180</b>

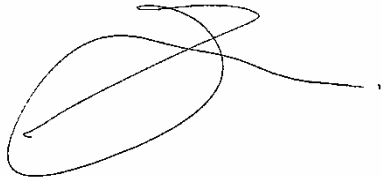
10.	<b>Changes in tenements (items 2.1(b) and 2.2(b) above)</b>	<b>Tenement reference and location</b>	<b>Nature of interest</b>	<b>Interest at beginning of quarter</b>	<b>Interest at end of quarter</b>
10.1	Interests in mining tenements and petroleum tenements lapsed, relinquished or reduced	EPM 18960 EPM 19015 EPM 19009 EPM 25537	Owner Owner Owner Owner	100% 100% 100% 100%	Nil Nil Nil nil
10.2	Interests in mining tenements and petroleum tenements acquired or increased		Nil		



### **Compliance statement**

- 1 This statement has been prepared in accordance with accounting standards and policies which comply with Listing Rule 19.11A.
- 2 This statement gives a true and fair view of the matters disclosed.

Sign here:



Date: 31 January 2019

Print name: Garry Gill

### **Notes**

1. The quarterly report provides a basis for informing the market how the entity's activities have been financed for the past quarter and the effect on its cash position. An entity that wishes to disclose additional information is encouraged to do so, in a note or notes included in or attached to this report.
2. If this quarterly report has been prepared in accordance with Australian Accounting Standards, the definitions in, and provisions of, AASB 6: Exploration for and Evaluation of Mineral Resources and AASB 107: Statement of Cash Flows apply to this report. If this quarterly report has been prepared in accordance with other accounting standards agreed by ASX pursuant to Listing Rule 19.11A, the corresponding equivalent standards apply to this report.
3. Dividends received may be classified either as cash flows from operating activities or cash flows from investing activities, depending on the accounting policy of the entity.

**CANNINDAH RESOURCES LIMITED**  
**QUARTERLY REPORT**  
**QUARTER ENDED 31 DECEMBER 2018**  
**TENEMENT TABLE**

TENEMENT TYPE	TENEMENT NUMBER	PROJECT NAME	LOCATION
EPM	14524	Barrimoon	Queensland
EPM	15261	Mt Cannindah 2	Queensland
ML	3201	Mt Cannindah	Queensland
ML	3202	Mt Cannindah	Queensland
ML	3203	Mt Cannindah	Queensland
ML	3204	Mt Cannindah Extended 1	Queensland
ML	3205	Mt Cannindah Extended 2	Queensland
ML	3206	Mt Cannindah Extended 3	Queensland
ML	3207	Mt Cannindah Extended 4	Queensland
ML	3208	Mt Cannindah Extended 5	Queensland
ML	3209	Mt Cannindah Extended 6	Queensland
ML	1442	Piccadilly	Queensland
EPM	16198	Piccadilly	Queensland
EPM	18322	Piccadilly	Queensland

The Piccadilly mining lease and EPM's are held by Piccadilly Gold Mines Holdings Limited. On 15 September 2017, Cannindah Resources Limited announced that it had signed an Earn-In Agreement with Piccadilly Gold Mine Holdings Limited under which the Company could earn in to a total interest of 75% of the Piccadilly Project. At 31 December 2018, the Company had completed the first phase of the earn-in and on completion of the second phase will gain the right to 25% of the project. At 31 December 2018, the Company's registered ownership interest in the Piccadilly mining lease and EPM's was nil.

Following the end of the quarter the Company completed the relinquishment of the Borium tenements (EPM's 18960, 19009 and 19015) as noted in the September Quarterly Activities report and relinquished EPM 25537 (Mt Cannindah project).

All other tenements are 100% owned with no farm in / farm out arrangements in existence at the end of the quarter and at the date of this statement.