

# Petratherm Limited

# ASX: PTR



## Company Presentation

March 2019

Fiddlers Creek Gold Battery, Avoca, Victoria



# About Petratherm

ASX Listing - April 2018 | Mineral Explorer | Highly experienced technical and corporate team

Shares On Issue: 171M | Options (unlisted): 14.9M

Market Cap (@0.036) : \$6.1M | Cash (end Dec 18 QTR): \$4.2M | EV: \$1.9M

Shareholders: 3,145 | Top 20 Holders 32.09%, Directors and Management 2.6%



# Experienced technical and corporate team

## **Mr Derek Carter – Non-Executive Chairman (BSc, MSc, FAusIMM (CP))**

Over 40 years' experience in exploration and mining geology and management. He held senior positions in the Shell Group of Companies and Burmine Ltd before founding Minotaur Gold NL in 1993. He is the Chairman of Highfield Resources Ltd, former Chairman of Minotaur Exploration Ltd, and a former board member of Intrepid Mines Ltd and Mithril Resources Ltd, all ASX listed companies.

## **Mr Donald Stephens – Non-Executive Director and Company Secretary (BA (Acc.), FCA)**

Mr Stephens is a Chartered Accountant and corporate advisor with over 25 years' experience in the accounting, mining and services industries, including 14 years as partner of HLB Mann Judd (SA), a firm of Chartered Accountants.

## **Mr Simon O'Loughlin – Non-Executive Director (BA (Acc.), Law Society Certificate in Law)**

Mr O'Loughlin is the founder of O'Loughlin's Lawyers, an Adelaide based, specialist commercial law firm. He has extensive experience in the corporate and commercial law fields while practising in Sydney and Adelaide, and also holds accounting qualifications.

## **Mr Peter Reid – Exploration Manager (BSc Hons, MAIG)**

Mr Reid is an exploration geologist with 25 years' experience. He has held senior roles with several ASX junior exploration companies and was one of the founders of Petratherm Limited, a specialist engineered geothermal explorer and developer.



# Petratherm – A Nimble Explorer !

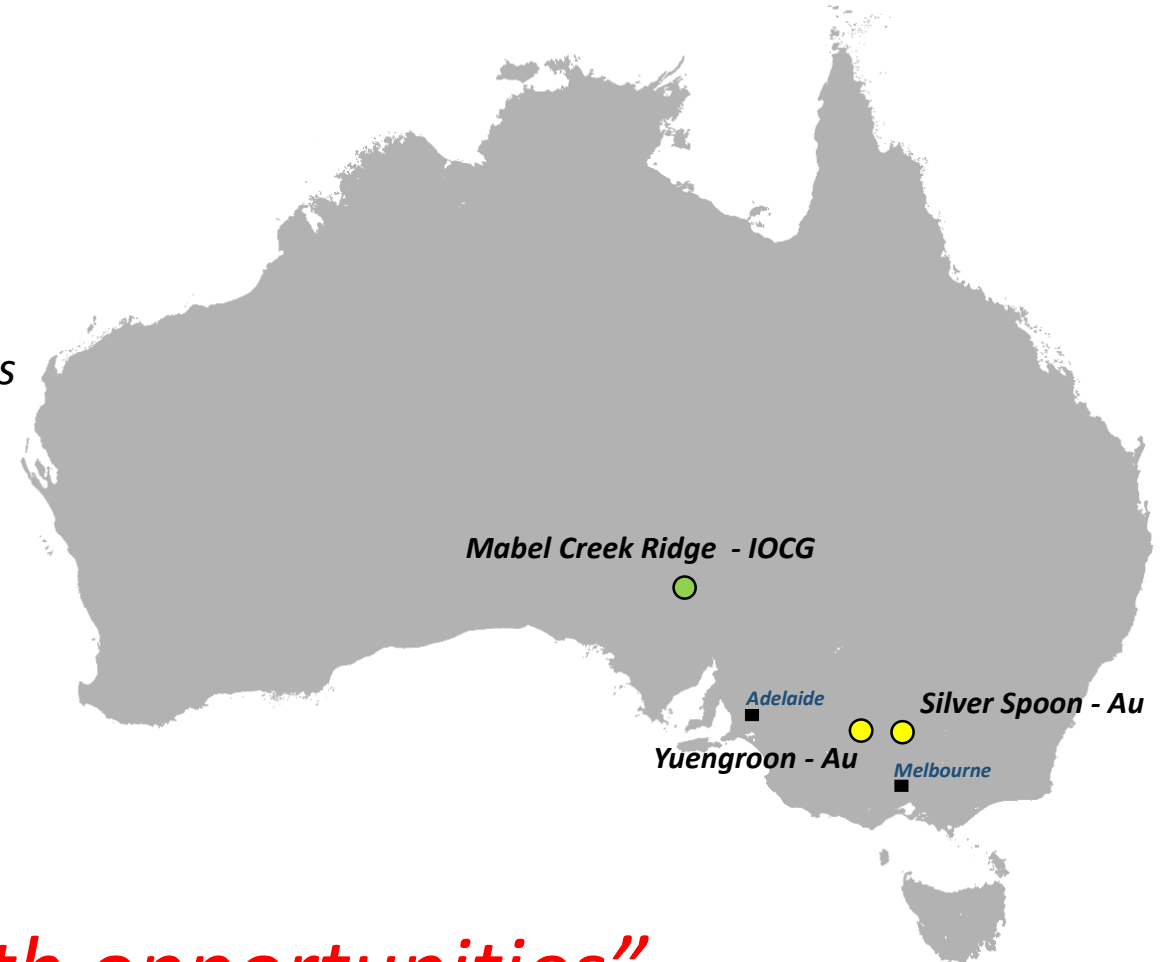
## Two Principal Deposit Styles

South Australia - Olympic Dam Style Copper-Gold

- *Multiple near drill ready high tenor gravity targets*

Victoria - Orogenic Gold

- *Two highly prospective ground positions acquired*
- *Seeking to increase Victorian gold holdings.*



*“focus is on new high growth opportunities”*



# South Australia's IOCG Province

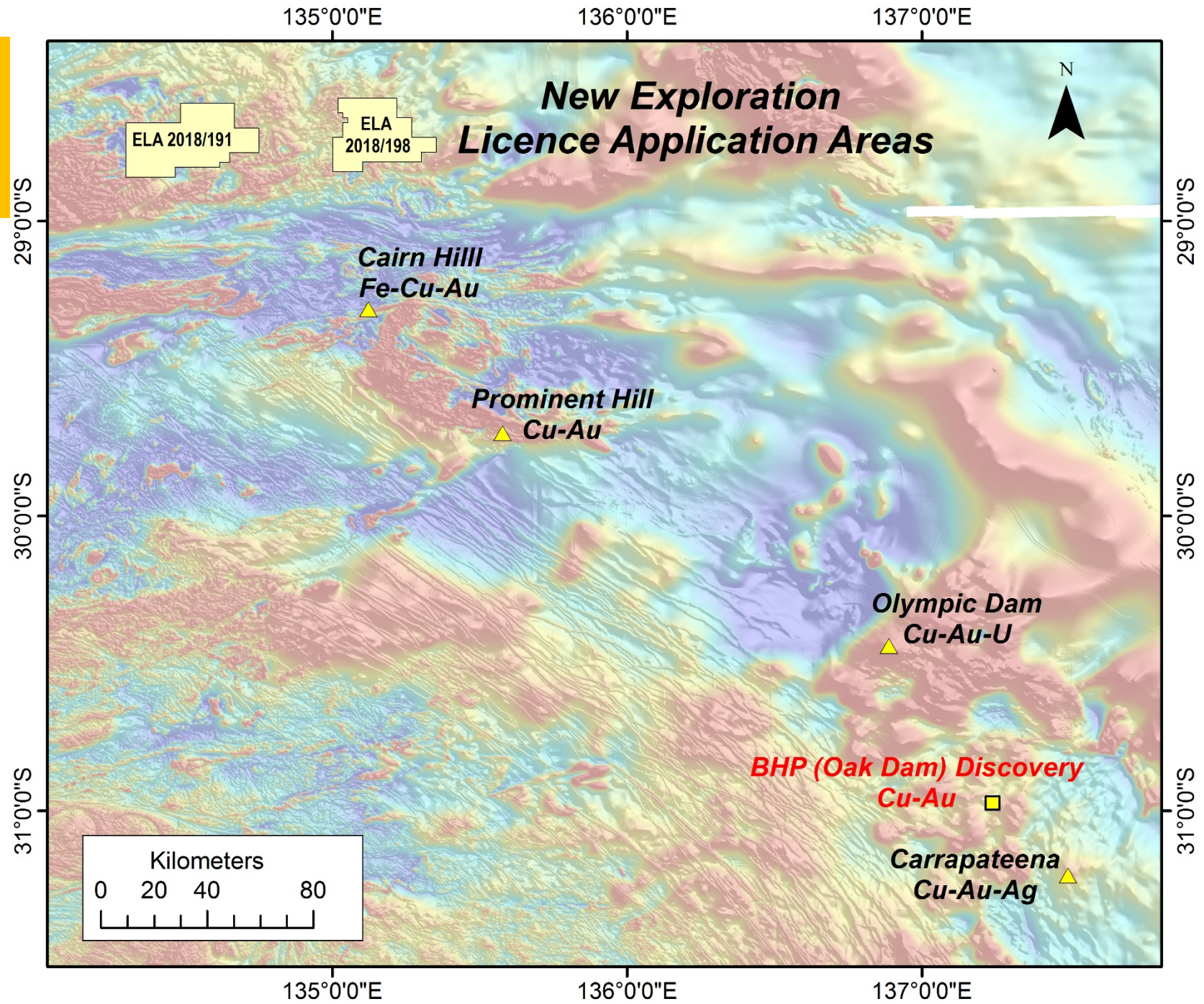
Large Licence Area - 1489 km<sup>2</sup>

Shallow Cover 100-200 metres

Region is fertile for Iron Oxide-Copper-Gold (IOCG) style mineralisation

Several semi-coincident large magnetic and gravity anomalies identified

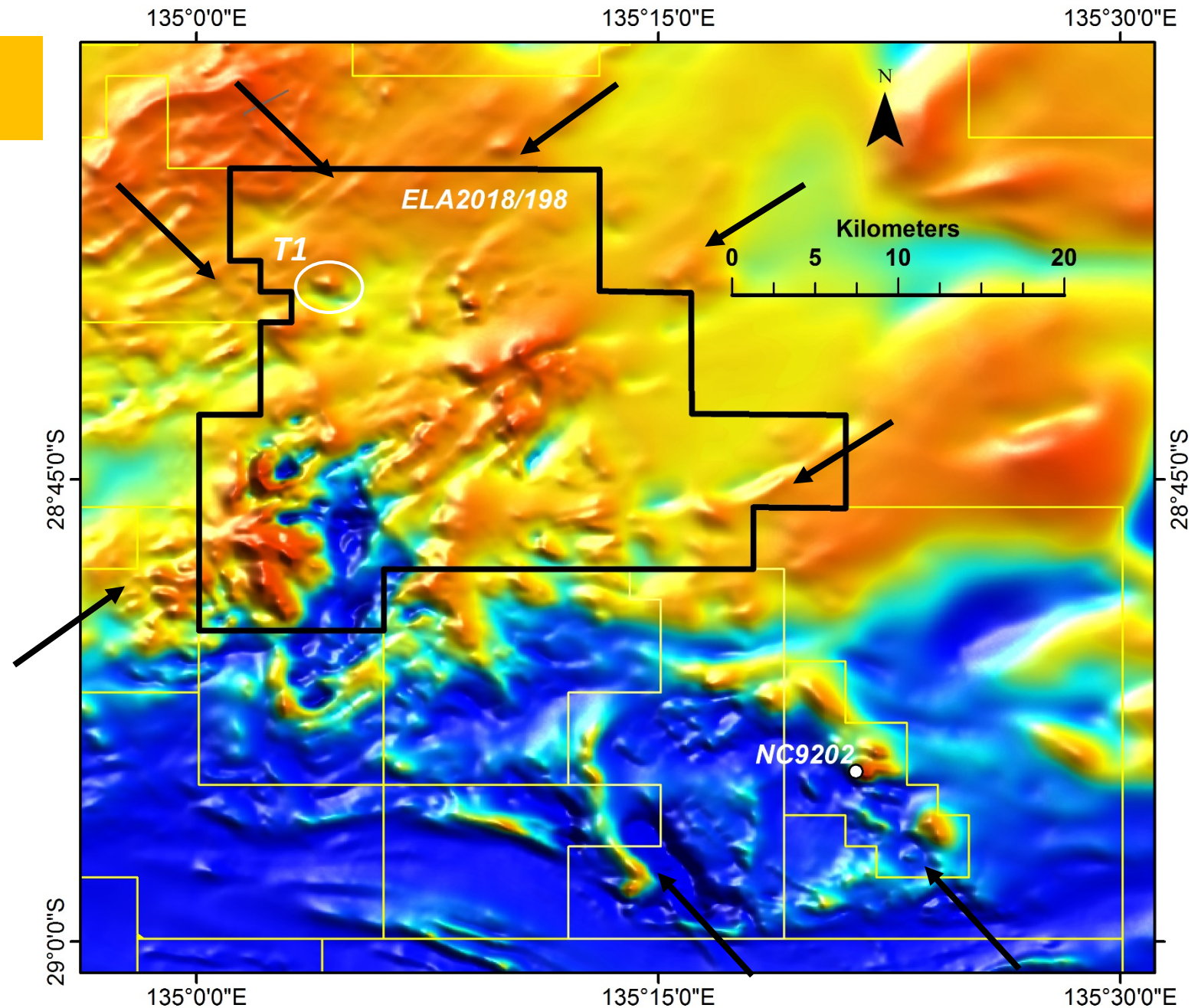
*Granting of EL's Imminent !  
(expected April 2019)*





# Mt Barry IOCG Project

- Eastern Margin of Gawler Craton
- Major NW and NE trending crustal Structures.
- Several discrete magnetic anomalies with semi co-incident gravity
- Historic BHP Drill hole - NC9202
  - 134m @ 626ppm Cu, 256ppm Pb, 593 ppm Zn from 96m.
  - Inc. 28m @ 0.14% Cu, 614ppm Pb, 0.23% Zn, 2 ppm Ag from 168m.
  - Anomalous rare earth elements were also present with values up to 1% Ce and La reported.

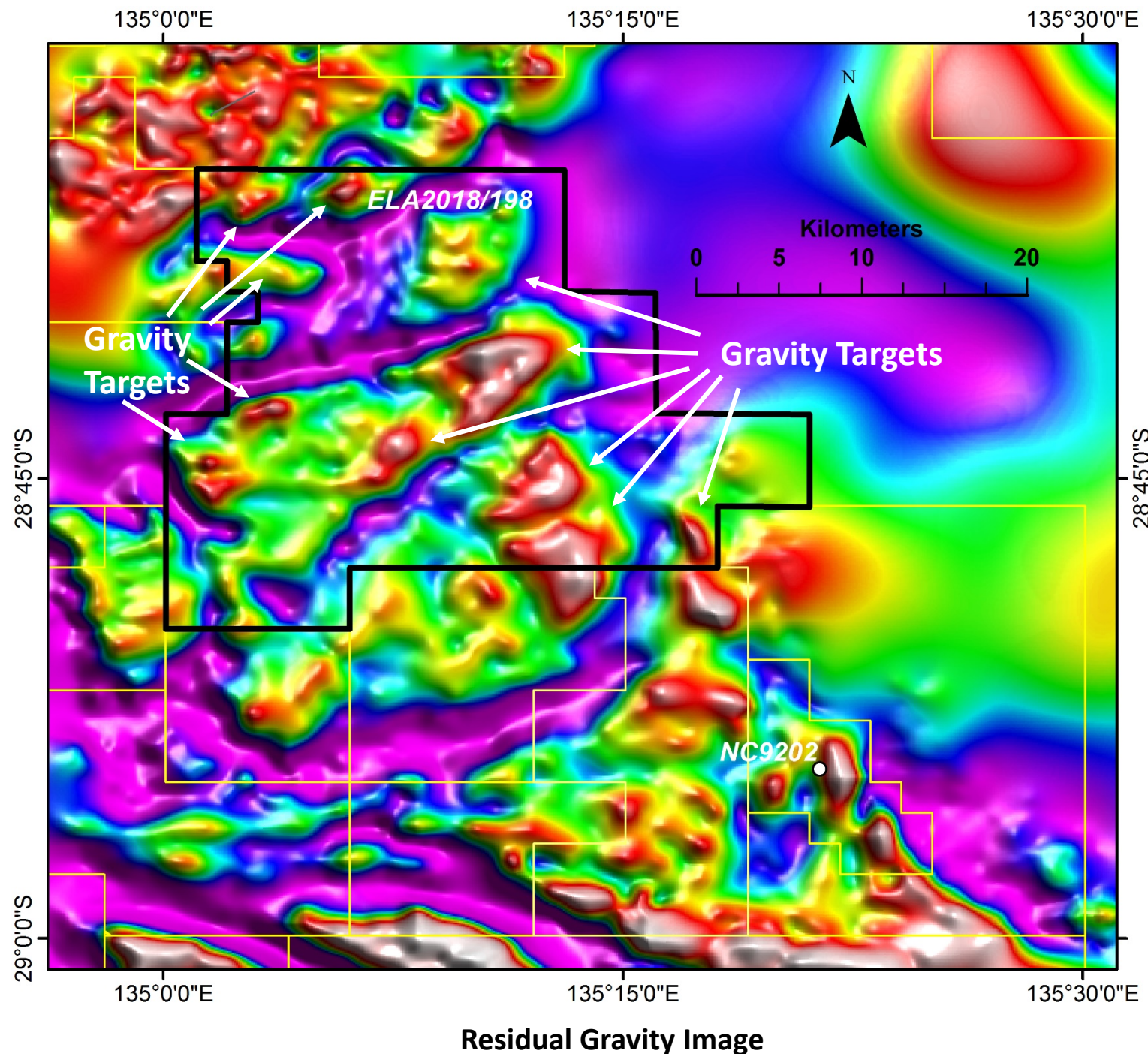


Reduced to pole, Total Magnetic Aeromagnetic Image



# Mt Barry IOCG Project

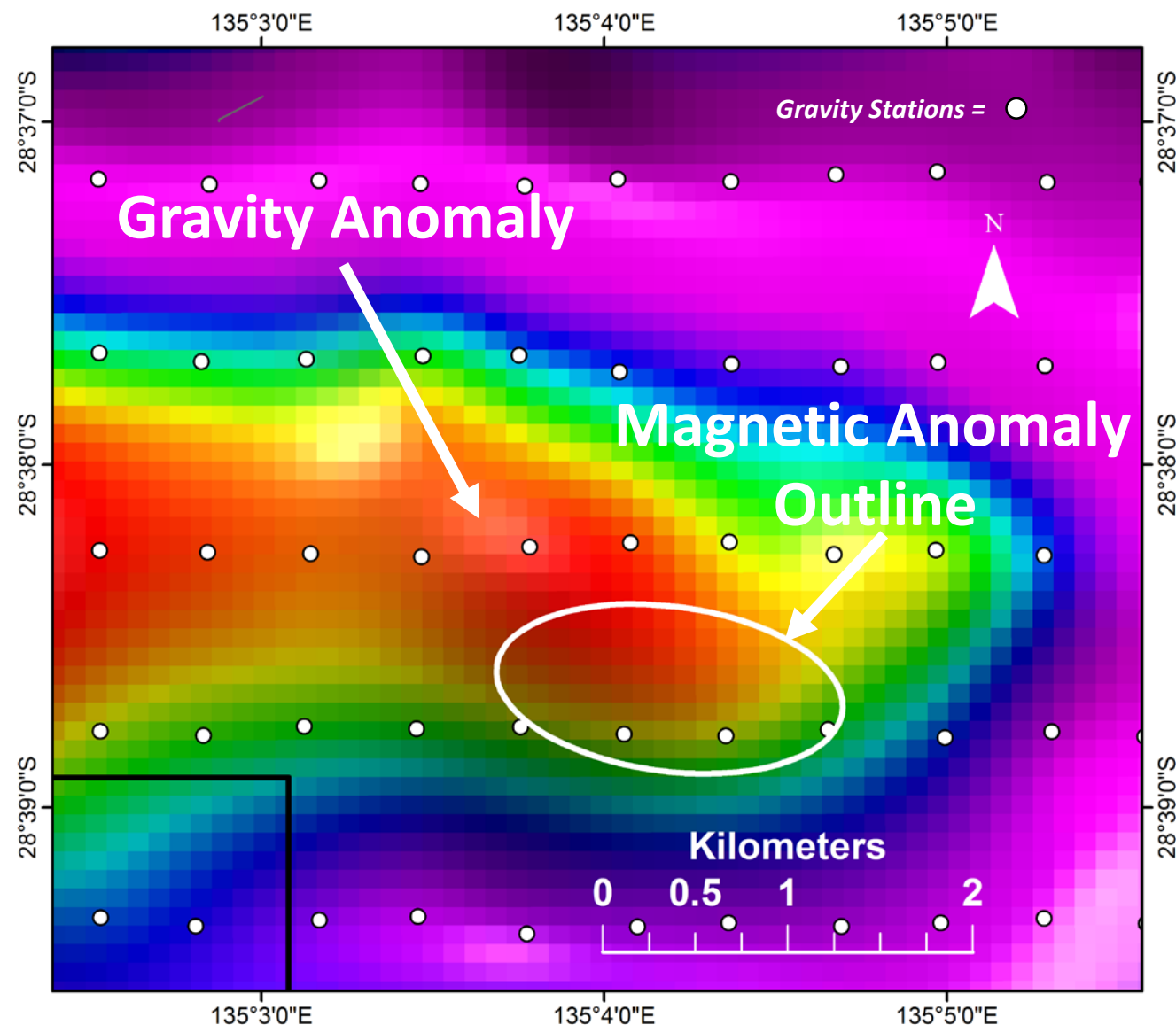
- Multiple High Amplitude ( $> 3\text{Mgal}$ ) Gravity Targets.
- Current gravity station spacing 500m to 5km
- Gravity survey planned for April 2019 (Subject to Landholder Approval)



# Mt Barry IOCG Project

## Target - T1 Detail

- 3+ milligal gravity anomaly
- Classical IOCG style target - Gravity Anomaly offset with Magnetic Anomaly
- Target occurs at regional large scale fault structural intersection and demonstrates a structural form indicative of an alteration system that may be mineralised
- Depth to basement: 100 to 200 metres
- Current gravity station spacing 500m by 1km

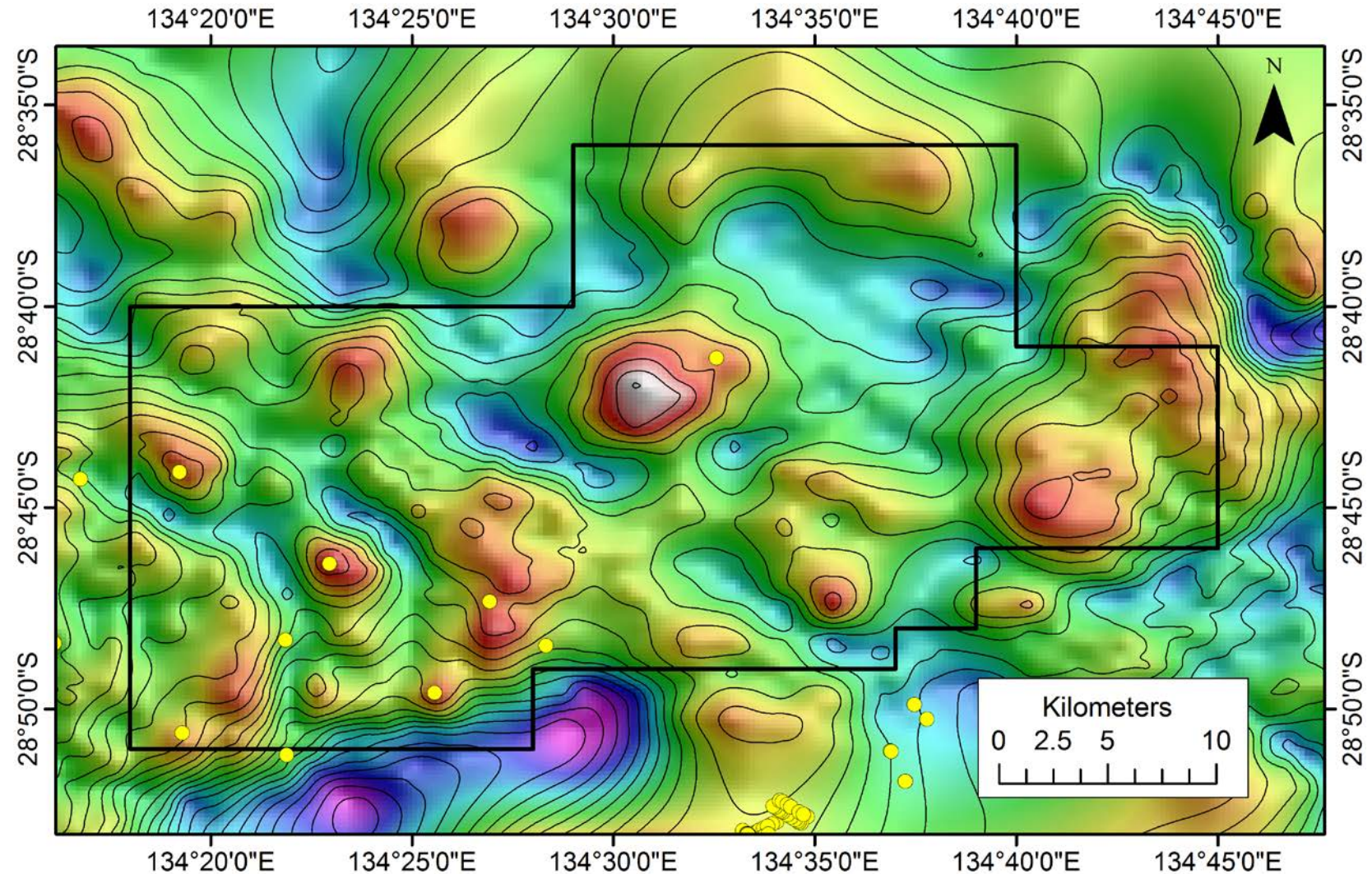




# Mt Willoughby IOCG Project

- Multiple High Amplitude (> 3Mgal) Gravity Targets.
- Current gravity station spacing is too coarse (500m to 2km), however has defined several large gravity targets worthy of infill ahead of drill testing

*Infill gravity survey planned for April 2019 (subject to landholder approval)*

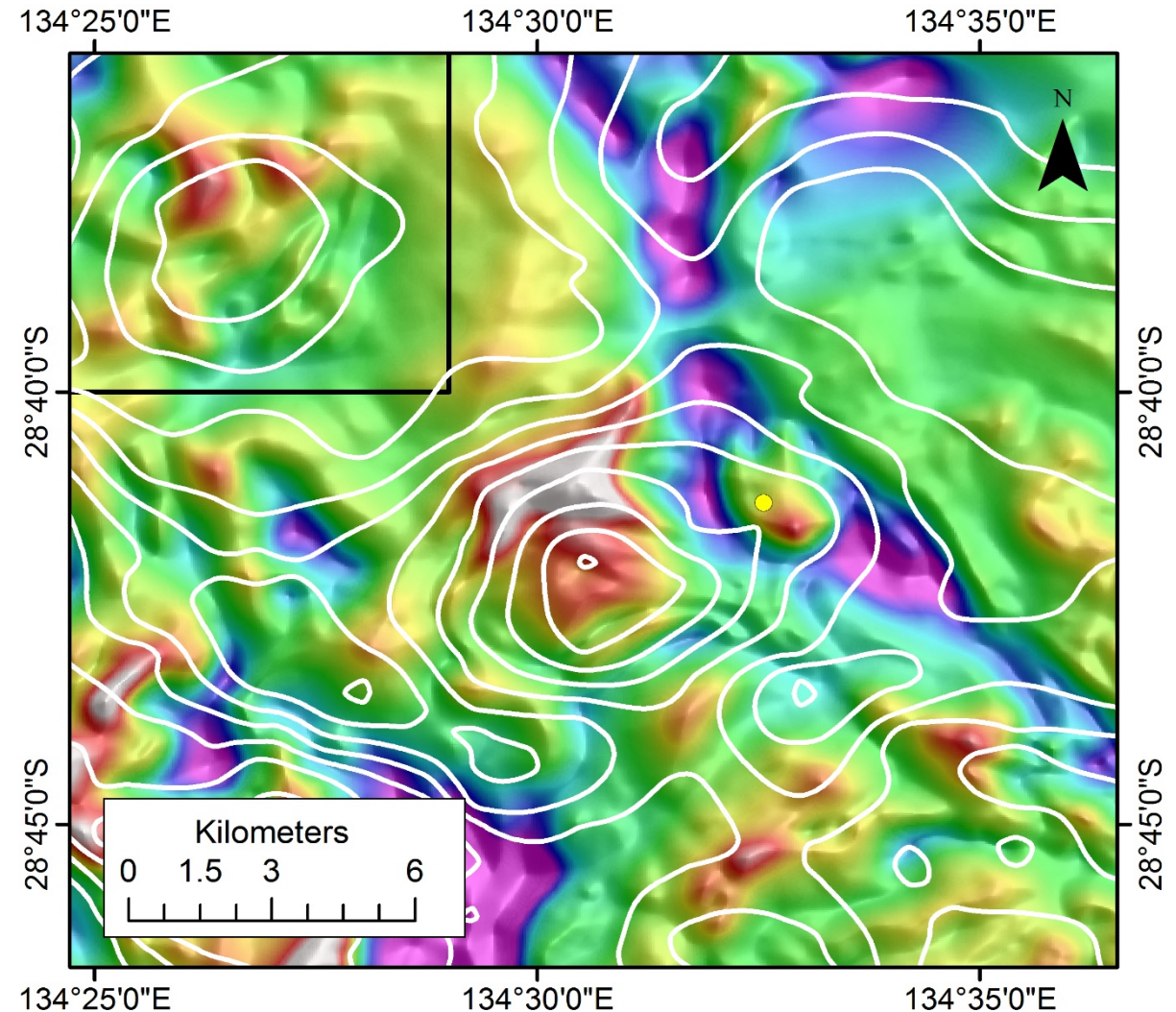


Regional pseudo-colour residual gravity image with 1 milligal gravity contours  
Historical drill hole collar positions shown as yellow dots.



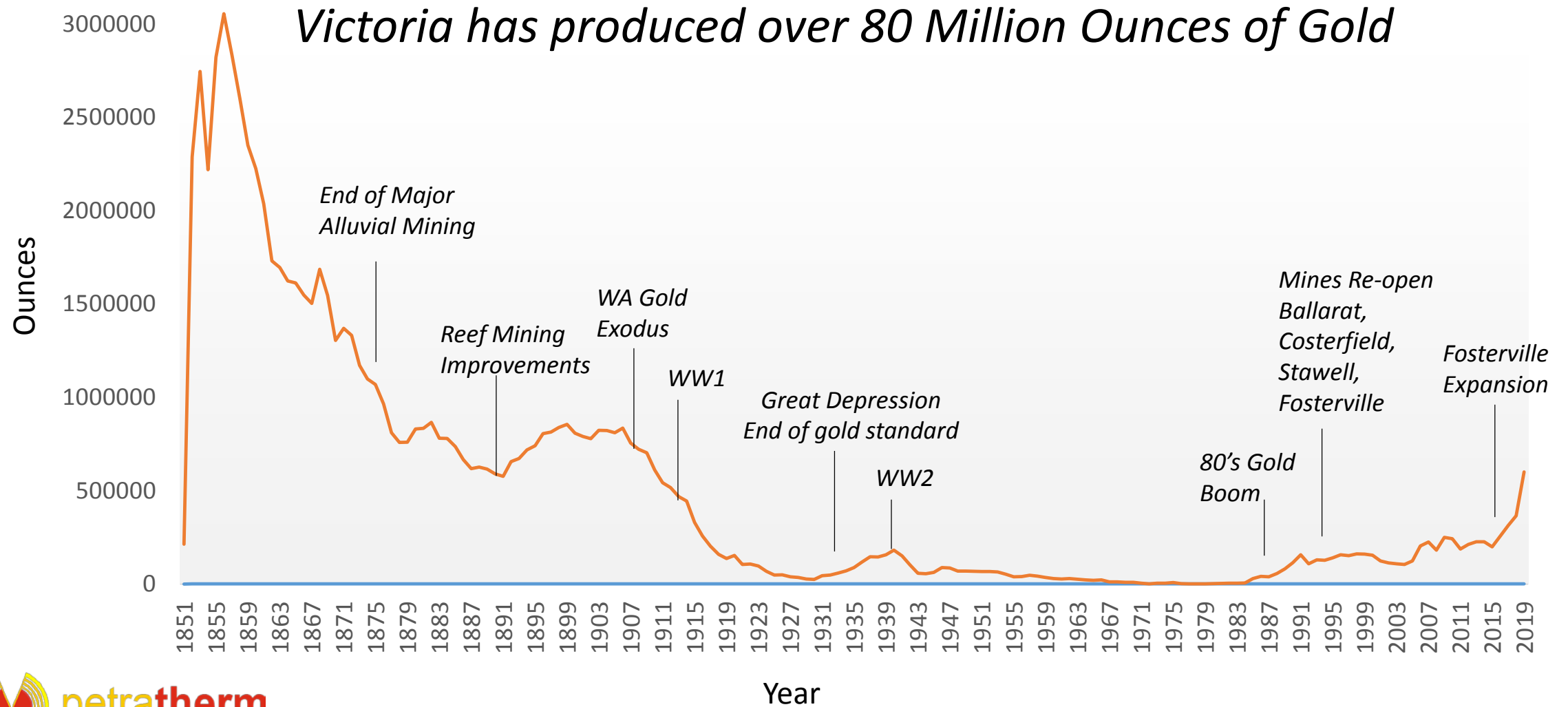
# Mt Willoughby IOCG Project

- Offset between peak of the magnetic and gravity anomalies.
- The gravity anomaly is at least 6 milligals in magnitude. As way of example the original Prominent Hill gravity target was approximately 4.5 milligals in magnitude.
- Historic drill hole (yellow) drilled to east intersected basement at 188 metres

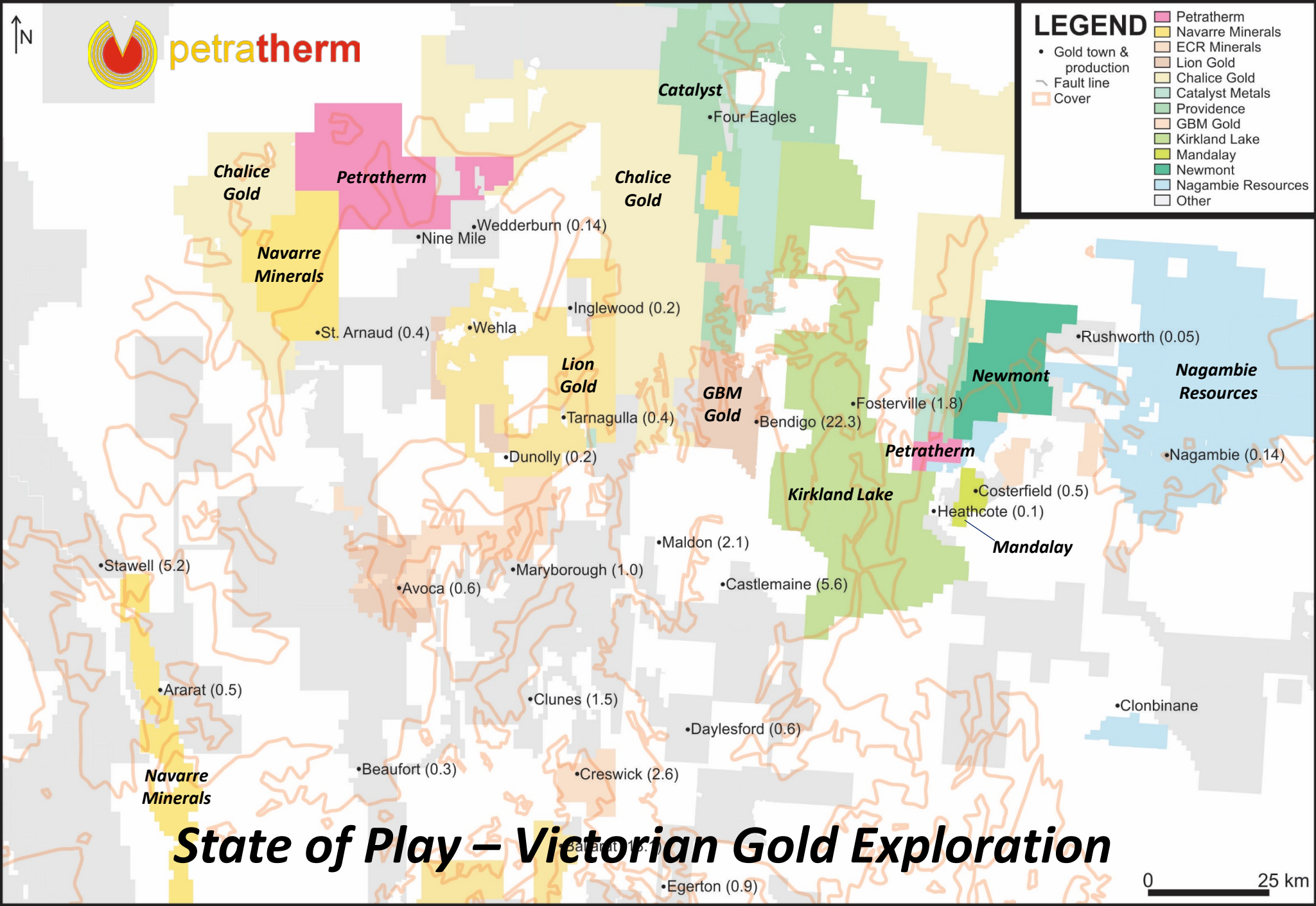




# Victorian Gold Production 1851 - 2019

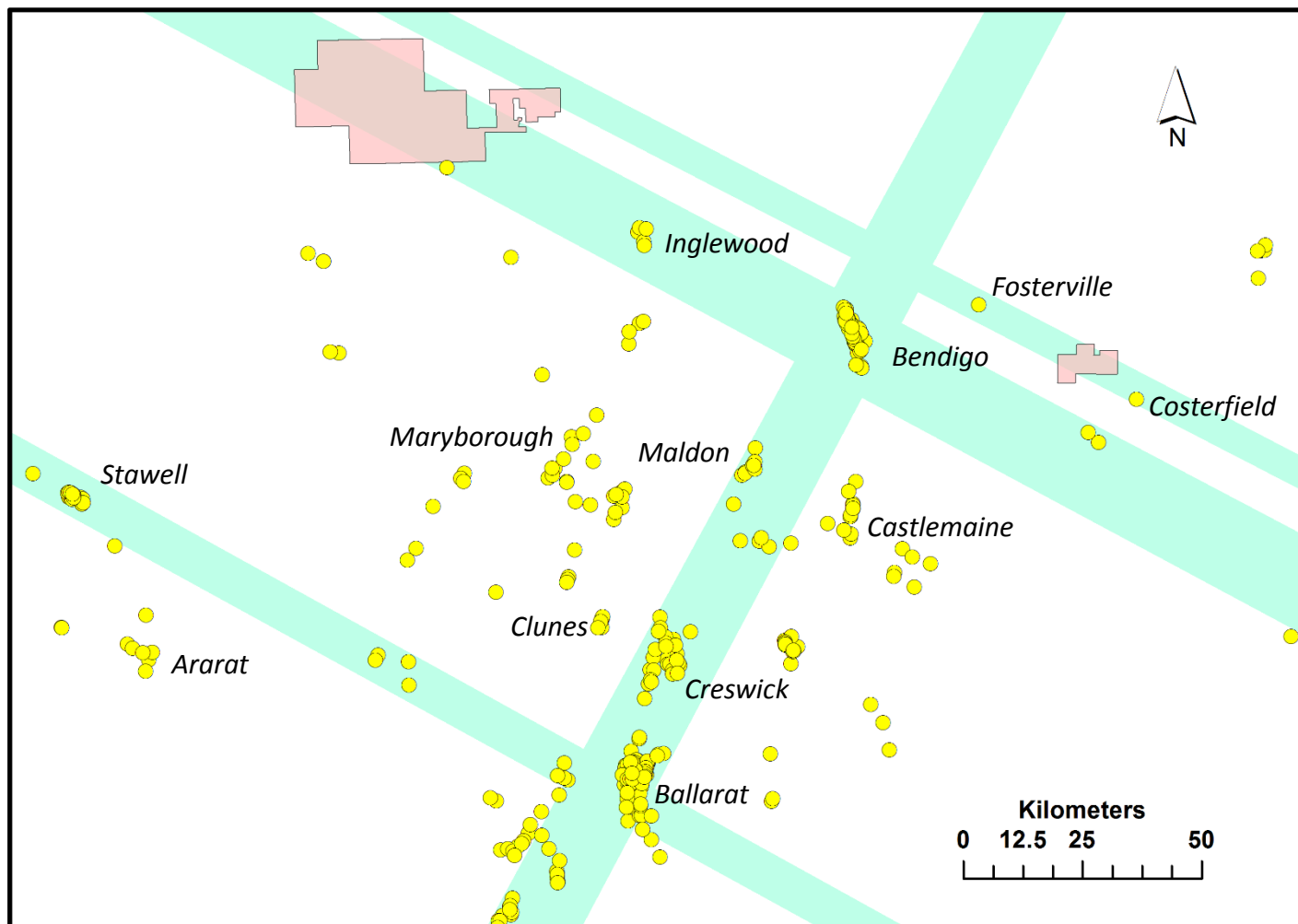






# Regional Targeting Program to locate Best Gold Areas

- Major goldfields occur in dilatational zones controlled by major crustal faults
- These deep seated faults are the major conduits of gold bearing fluid. Driven by upwelling hydrothermal fluid flow.
- Deposits themselves are hosted in higher order structures.
- Larger gold systems demonstrate large alteration halos. Often includes mafic dykes - evidence of magmatic source fluids

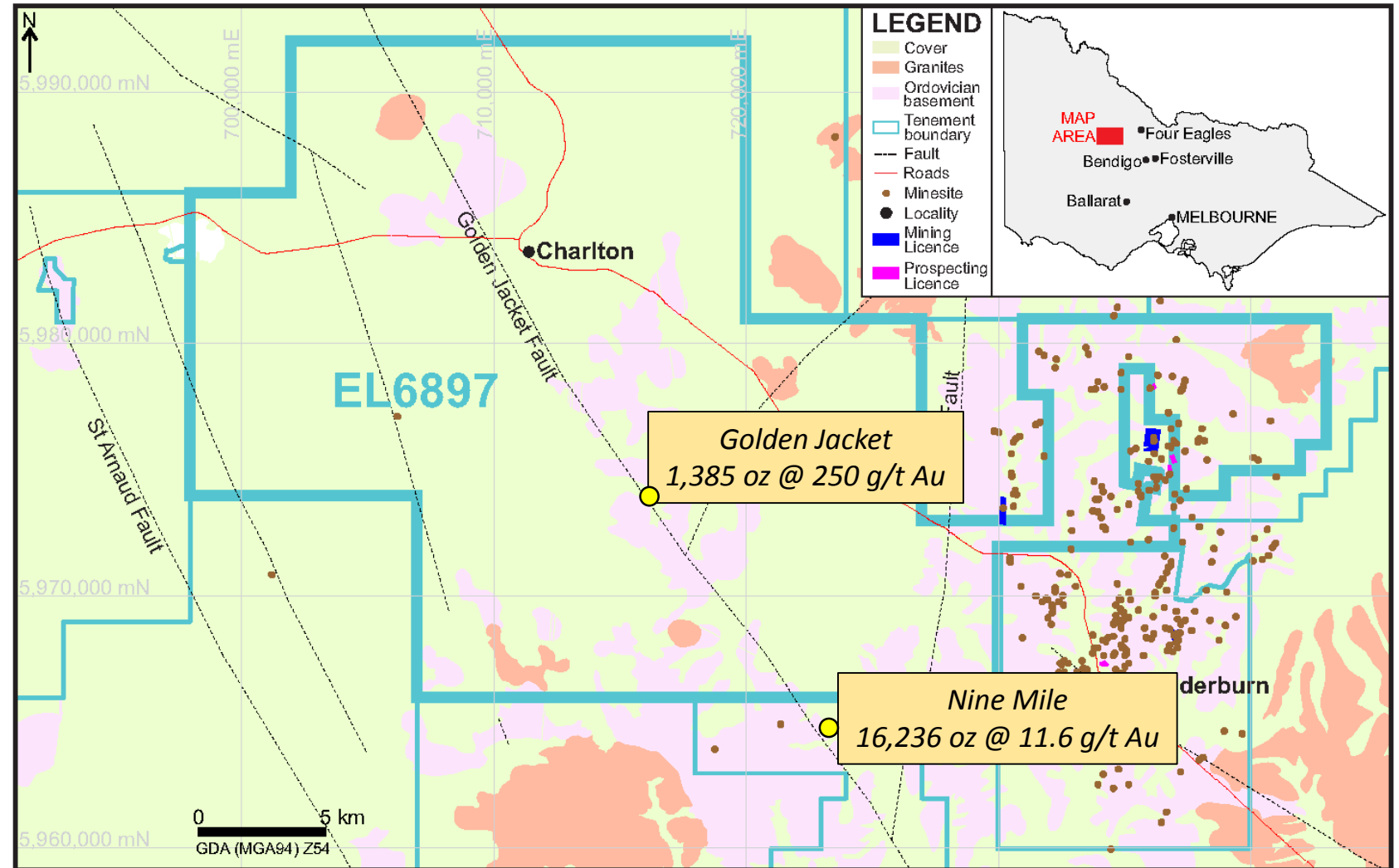


*Gold mines (>10,000 oz) (yellow dots), Petratherm tenements, (pink) and schematic interpretation of some of the deep crustal fault trends (based on interpretation of regional gravity) which may be controlling major gold accumulations.*



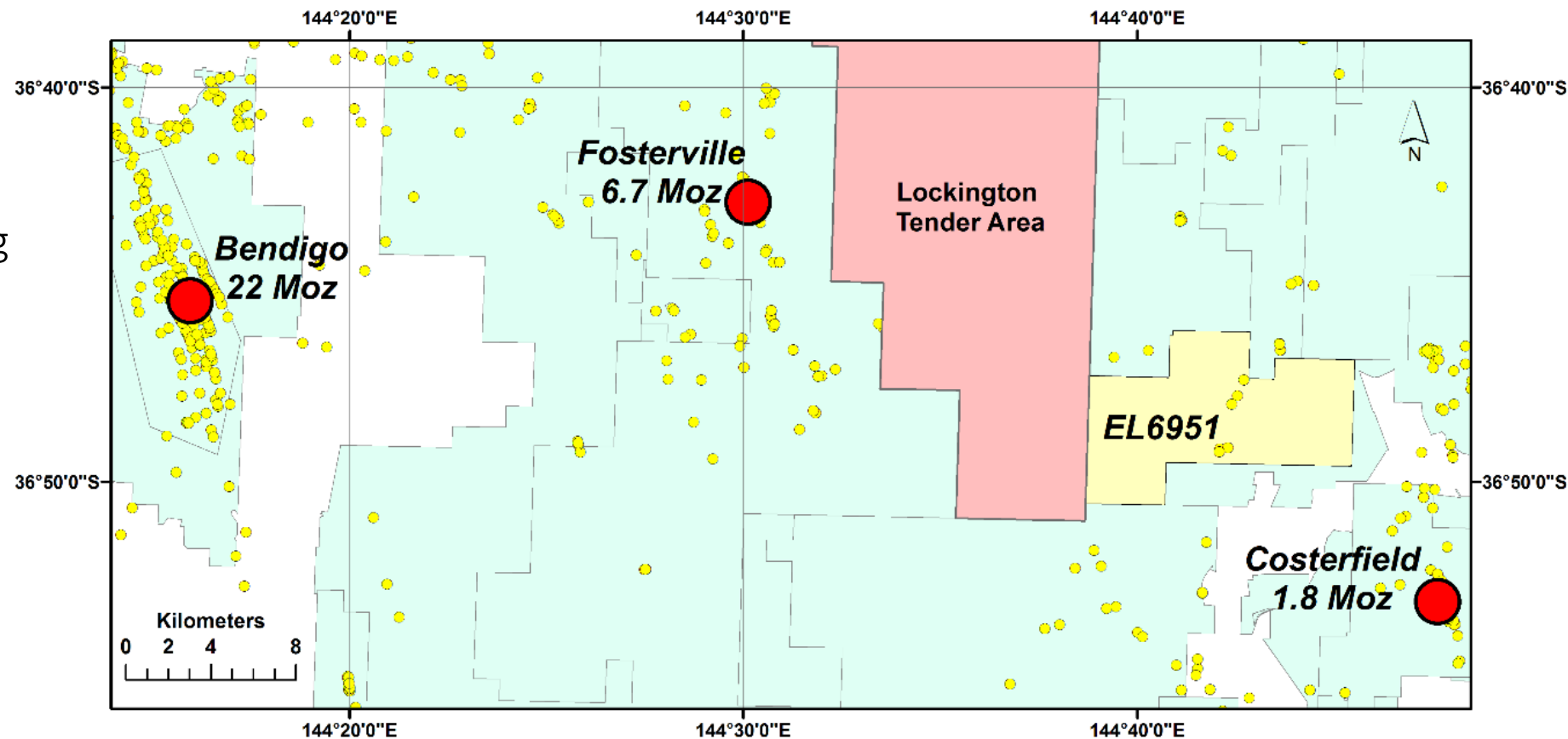
# Yuengroon Gold Project

- Large 687 km<sup>2</sup> area
  - Covers a portion of the Wedderburn Goldfield (140,000 Oz Au production)
  - Prospective mineralised fault structures
- Golden Jacket Mine  
1,385 Oz @ 250 g/t Au
- Nine Mile Mine  
16,236 oz @ 11.6 g/t Au
- Shallow cover over most of the tenement.
  - Land access works underway
  - Tenement granting due April 2019



# Silver Spoon Gold Project

- New tenement Application (Feb 19)
- Close to major operating mines
- Area only lightly explored due to shallow cover over most of the tenement
- Several historical gold shows and alteration recorded, associated with major faults



*EL6951 (Silver Spoon) Location Map, showing recorded historical mine sites (yellow dots), current exploration licences (light blue) and major gold mines.*



# 2019 Exploration Programme

## SA Olympic Dam Style Copper Gold targets

- Ground gravity to define gravity targets to a drill ready status
- Native Heritage surveys and drilling permitting

## Victoria – Orogenic Gold

- Land access, rock and soil sampling, regional gravity surveys to locate potential mineralised structures and/or IP geophysics over mineralised areas to define sulphide rich gold targets
- Drilling of targets identified from surface surveys (subject to obtaining permitting approvals)

## New Projects

- Petratherm is in discussion with several party's, with the aim of increasing its Victorian Gold Project Portfolio. Both early stage, greenfield's and advanced exploration plays.



*Reef Gold Drive Entrance, Wedderburn, Victoria*

# JORC Information and Competent Person Statement

## JORC Information:

Further details (Including JORC 2012 Code Reporting Tables, where applicable) for the information included in this Presentation can be found in the following Petratherm Limited announcements previously lodged with the ASX:

- Petratherm Secures Position in Highly Prospective Bendigo Gold Zone – 22 November 2018
- Petratherm Secures Land Position Over Highly Prospective Olympic Dam Style, Copper-Gold, Geophysical Anomalies – 5 December 2018
- Second Tenement Application over an Area Prospective Olympic Dam Style, Copper-Gold – 12 December 2018
- Victorian Gold Tenement Update - Exceptional 250 g/t Au Historic Reef Occurrence – 13 February 2019
- Exploration Licence Application close to Fosterville Gold Mine – 4 March 2019

## Competent Persons Statement:

The information in this report that relates to Exploration Targets and Exploration Results is based on information compiled by Mr Peter Reid, who is a Competent Person, and a Member of the Australian Institute of Geoscientists. Mr Reid is not aware of any new information or data that materially affects the historical exploration results included in this report. Mr Reid is an employee of Petratherm Ltd. Mr Reid has sufficient experience that is relevant to the style of mineralisation and type of deposit under consideration and to the activity being undertaken to qualify as a Competent Person as defined in the 2012 Edition of the 'Australasian Code for Reporting of Exploration Results, Mineral Resources and Ore Reserves'. Mr Reid consents to the inclusion in the report of the matters based on his information in the form and context in which it appears.





# Disclaimer

This presentation has been prepared by Petratherm Limited (Petratherm). The information contained in this presentation is a professional opinion only and is given in good faith. Certain information in this document has been derived from third parties and though Petratherm has no reason to believe that it is not accurate, reliable or complete, it may not have been independently audited or verified by Petratherm.

Any forward-looking statements included in this document involve subjective judgment and analysis and are subject to uncertainties, risks and contingencies, many of which are outside the control of, and maybe unknown to, Petratherm. In particular, they speak only as of the date of this document, they assume the success of Petratherm's strategies and they are subject to significant regulatory, business, competitive and economic uncertainties and risks. Actual future events may vary materially from the forward looking statements and the assumptions on which the forward looking statements are based. Recipients of this document ("Recipients") are cautioned not to place undue reliance on such forward-looking statements.

Petratherm makes no representation or warranty as to the accuracy, reliability or completeness of information in this document and does not take responsibility for updating any information or correcting any error or omission which may become apparent after this document has been issued.

To the extent permitted by law, Petratherm and its officers, employees, related bodies corporate and agents ("Agents") disclaim all liability, direct, indirect or consequential (and whether or not arising out of the negligence, default or lack of care of Petratherm and/or any of its Agents) for any loss or damage suffered by a Recipient or other persons arising out of, or in connection with, any use or reliance on this presentation or information. All amounts in Australian dollars (AUD) unless stated otherwise.