

**ASX Announcement: 30 April 2019**

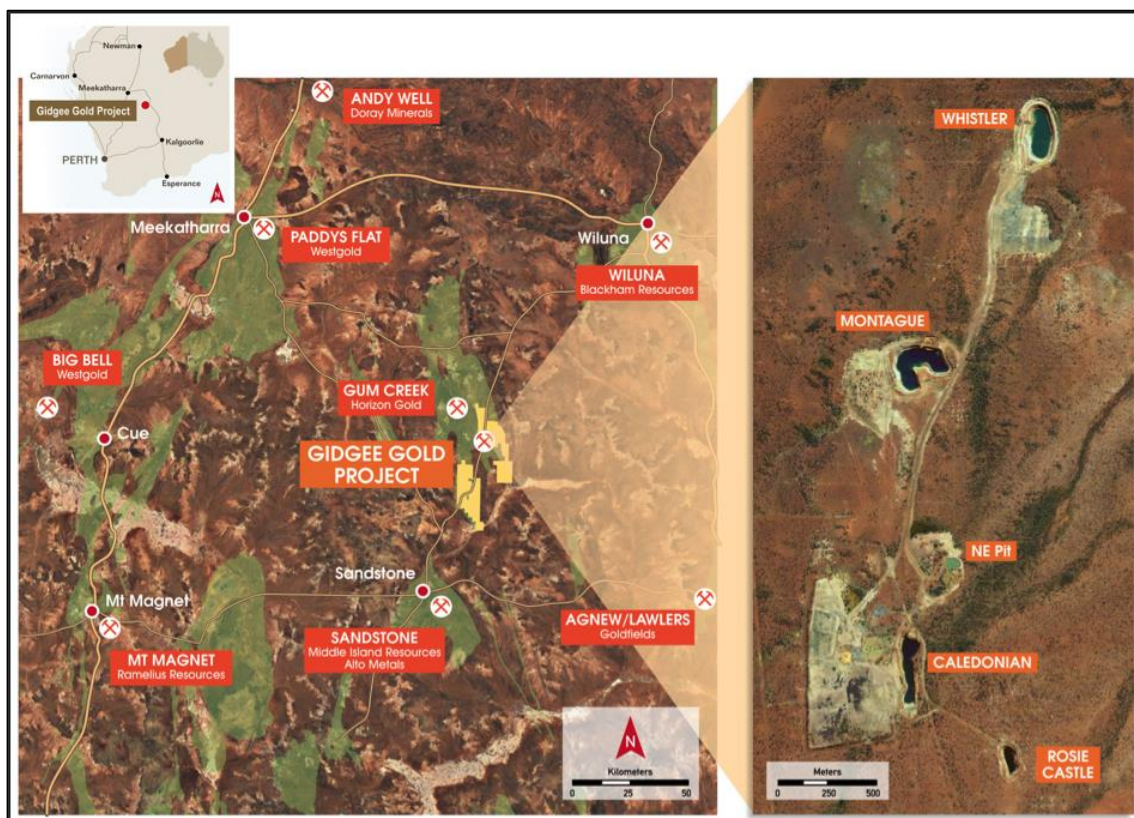
## **DRILLING RE-COMMENCES AT GIDGEE GOLD PROJECT**

***Ongoing programs of diamond and RC drilling underway at the Whistler and Montague Gold Deposits as well as initial testing of selected targets along the Montague granodiorite contact***

Gateway Mining Limited (ASX: GML) (**Gateway** or **Company**) is pleased to advise that drilling has re-commenced at the Company's 100%-owned Gidgee Gold Project, Western Australia (Figure 1).

This ongoing drilling program will initially consist of diamond drilling to test the depth extents of the high-grade domain at the Whistler Gold Deposit and will then move to the Montague Gold Deposit to test extensions of the mineralisation at depth and along strike. On completion, a Reverse Circulation (RC) and aircore drilling rig will be mobilised to start testing key targets along the highly prospective margin of the Montague Granodiorite, including immediately below the Rosie and North East Caledonian historical open pits.

These new drilling programs will continue for at least the next two months and results will be reported as they come to hand.



**Figure (1): Gidgee Gold Project Location Plan**

Peter Langworthy  
Managing Director

***For and on behalf of  
GATEWAY MINING LIMITED***

**Competent Person Statement**

The information in this report that relates to Exploration Results or Mineral Resources is based on information compiled or reviewed by Mr Peter Langworthy who is a full-time employee of Gateway Mining Ltd and is a current Member of the Australian Institute of Mining and Metallurgy. Mr Peter Langworthy has sufficient experience, which is relevant to the style of mineralisation and types of deposit under consideration and to the activities undertaken, to qualify as a Competent Person as defined in the 2012 Edition of the "Australasian Code of Reporting of Exploration Results, Mineral Resources and Ore Reserves". Mr Langworthy consents to the inclusion in the report of the matters based on the information in the form and context in which it appears.