



sensennetworks

Making Cities Smarter



Investor Presentation

May 2019

ASX: SNS

Disclaimer

This presentation has been prepared by SenSen Networks Pty Limited (SenSen or Company).

Summary information: This Presentation contains summary information about SenSen and its activities and is not intended for general circulation or publication and it cannot be reproduced without the prior written consent of SenSen.

No investment advice: This Presentation is for information purposes only and is not a prospectus or a disclosure document under Australia Law, and will not be lodged with the Australian Securities Investment Commission (ASIC). In Australia, this Presentation is limited to Australian Financial Services Licensees and their representatives. By attending this Presentation in Australia, you warrant that you are such a person. SenSen is not licensed to provide financial product advice in respect of SenSen securities and this Presentation should not be considered as an offer or invitation to subscribe for, or purchase any, securities in the Company or as an inducement to make an offer or invitation with respect to those securities. No agreement to subscribe for securities in the Company will be entered into on the basis of this Presentation.

Risk: An investment in SenSen shares is subject to investment risks and other known and unknown risks, some of which are beyond the control of SenSen. SenSen does not guarantee any particular rate of return or the performance of SenSen nor does it guarantee the repayment of capital from SenSen or any particular tax treatment.

Financial data: Throughout this Presentation all figures are quoted in A\$ dollars unless otherwise stated.

No reliance: You should not act and refrain from acting in reliance on this Presentation. This overview of the Company does not purport to be all-inclusive or to contain all information which its recipients may require in order to make an informed assessment of the Company's Presentation.

No representation: The Company has not audited or investigated the accuracy or completeness of the information, statements and opinions contained in this Presentation. Accordingly, to the maximum extent permitted by applicable laws, the Company makes no representation and can give no assurance, guarantee or warranty, express or implied, as to, and takes no responsibility and assumes no liability for, the authenticity, validity, accuracy, suitability or completeness of, or any errors in or omission, from any information, statement or opinion contained in this Presentation.

Confidential: The contents of this Presentation are confidential. This Presentation is being provided to you solely for your information and may not be reproduced or redistributed to any other person.



In the Casino vertical, our solutions help improve

- staff productivity
- yield and minimising loss
- customer satisfaction
- safety

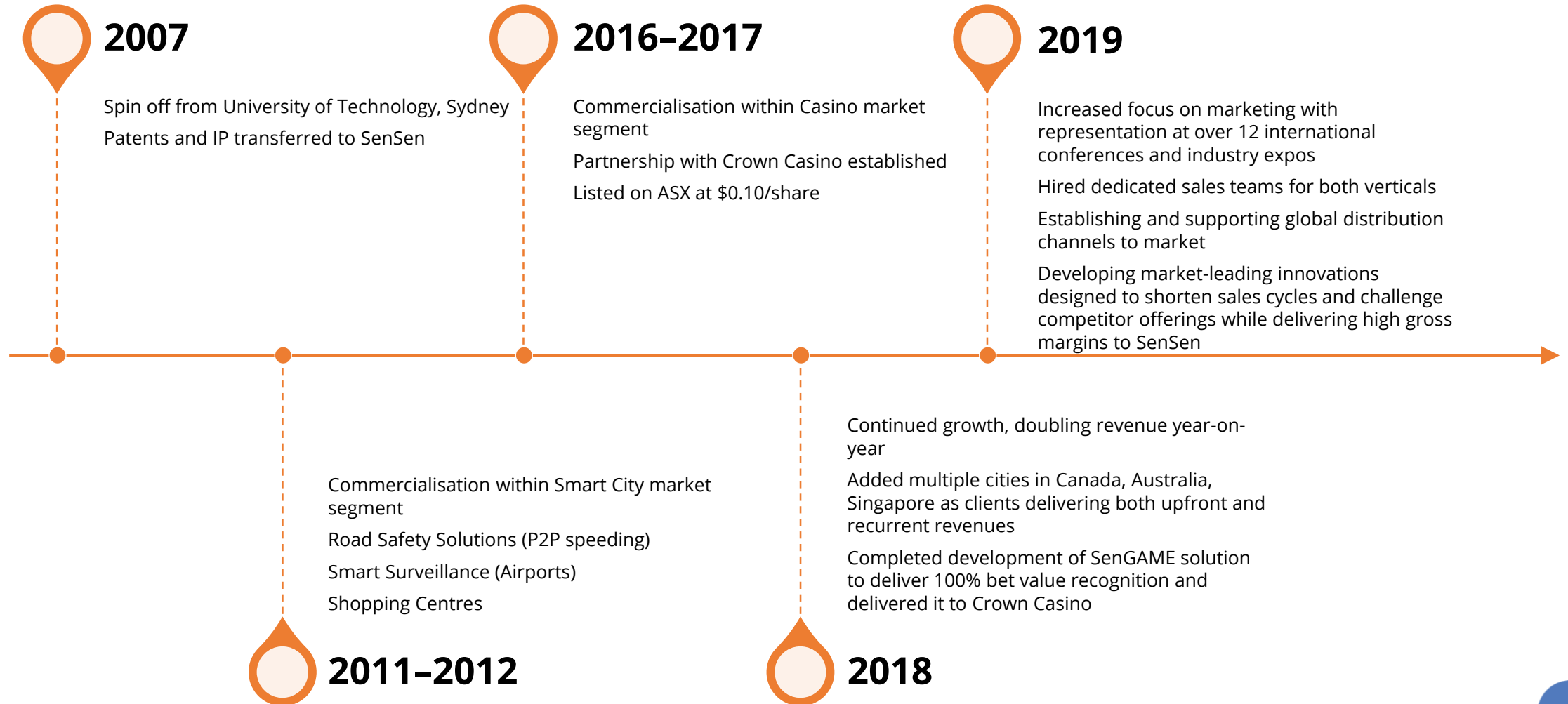
SenSen solutions
***make cities smarter
and enterprises more
efficient***

In the Smart Cities vertical,
we are making

- roads safer
- parking efficient
- communities cleaner
- roads congestion free
- asset audits efficient



SenSen Corporate History



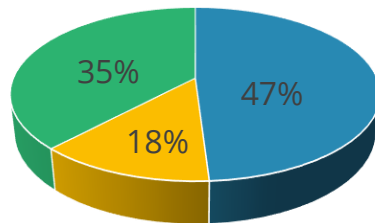
SenSen Corporate Snapshot

ASX STOCK CODE

SNS

| | |
|---------------------------------|--------------|
| Listing date | 18-Oct-17 |
| Share price as at 24 April 2019 | \$0.14 |
| Unlisted options | 31.5m |
| Issued shares | 418.6m |
| Fully diluted market cap | \$63m |

Share register



- HNW and retail investors
- Institutional investors
- Management and directors

Last 12 months' share trading price and volume



SenSen Board of Directors



Dr. Subhash Challa
Executive Chairman

Subhash founded SenSen Networks as a spin off from the University of Technology Sydney where he was the Professor of Computer Systems. He is a world leading authority in data science specialising in the analysis of video and sensor data with a focus on solving every day business problems.

Between 2007-2011, he was a Professor at National ICT Australia, University of Melbourne, and was a visiting scholar at Harvard University (1997) and Tan-Chin Tau fellow at Nanyang Technological University in Singapore (2003). Subhash joined SenSen as a full time CEO in January 2012 following a successful career in academia.

sensennetworks
MAKING CITIES SMARTER



David Smith - Executive Director & Company Secretary

David brings more than 15 years' experience as an investment banker, working in both the capital markets and M&A globally with JPMorgan Chase, Ord Minnett and BBY Ltd. He was regularly ranked as one of the Top 10 Australian Investment Bankers in annual surveys, and raised more than \$4 billion for corporate clients.

With an extensive background advising companies across all sectors, including tech, industrials and resources, David has driven the evolution of several emerging companies into multi-billion dollar enterprises. He is a Non-Executive Director of RAW Capital Partners Holdings Ltd, a UK-based international asset manager.



Zenon Pasieczny
Non-Executive Director

Zenon is an experienced venture capital investor and is closely involved in SenSen's strategic marketing and delivery of global communication messages to clients, partners and the media.

He backed SenSen for its outstanding potential as an Australian technology company with innovative and IP-driven solutions and has helped it to grow from an R&D-focused start-up to a globally respected industry leader.



Jason Ko
Non-Executive Director

Jason is the CEO of Moduware, an IoT platform and consumer device business. He is also a Director and former CEO of Speed shield Technologies.

Jason is a Dean's Scholar of Computer Science (Monash University) with a keen sense and passion for IoT where the businesses he's involved in have a unique data proposition. He brings a unique blend of high technical skill and business acumen with proven experience in setting up and operating successful businesses in Australia, China and the US.



Heather Scheibenstock
Non-Executive Director

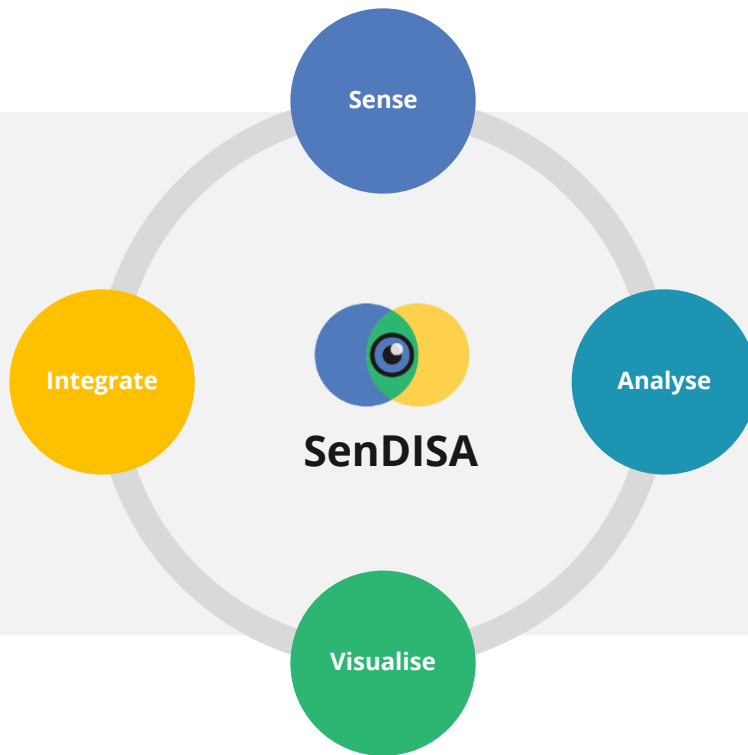
Heather has over 25 years' experience within the gaming and hospitality industries specialising in strategic planning, business development, stakeholder engagement and offshore growth.

She is currently a Non-Executive Director of ASX listed global gaming company, Ainsworth Game Technology (ASX:AGI). Prior to Ainsworth, Heather has held senior executive roles at numerous gaming companies including Bloomberry Resorts Corporation and Echo Entertainment Group (ASX: SGR).



SenSen Technology

THE SENDISA PLATFORM – POWERED BY THE LATEST
ADVANCES IN AI AND MACHINE LEARNING



Extract relevant data
from cameras and
sensors

Video-IoT data
analytics and
Artificial Intelligence

Use data to reduce
cost of operations
and increase revenue

Big data analytics and
Business Intelligence

Integrate with
Enterprise Business
Applications

Enterprise
application
integration software

SenSen uses SenDISA to develop market focused products and
solutions



Highly Scalable, Recurrent Revenue Model

VERTICAL APPLICATIONS

REVENUE MODEL

Parking Enforcement

Yearly license fee linked to the volume of parking violations processed or number of cameras used for monitoring parking violations

Parking Occupancy

Per bay per month

Sign/Line Audits

Per sign audited

Smart Surveillance

Upfront and yearly license fee that scales with number of cameras used for monitoring

Road Safety & Tolling

Upfront and yearly license fee that scales with number of cameras used for monitoring

Casinos

Per table per month



SenSen's Markets:

SenSen is operating in a rapidly growing, multi-billion dollar market undergoing significant transition due to adoption of AI and IoT

There are more than 2,000 smart cities in the world

There are more than 1,300 casinos with over 50,000 tables between them globally

We are targeting having 100+ cities using a mix of our solutions within the next 3 years

Our aim to be on over 10,000 tables delivering real time game and player analytics within the next 3 years

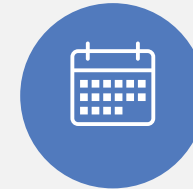


SenSen's Global Footprint



Financial Performance

| | FY16 (\$M) AUDITED | FY17 (\$M) AUDITED | FY18 (\$M) AUDITED | H1 FY19 (\$M) AUDITED |
|--|-----------------------|-----------------------|-----------------------|-----------------------------|
| Total Revenue | 1.11 | 2.07 | 4.05 | 2.22 |
| Total Cost of Goods | 0.37 | 0.84 | 1.61 | 0.90 |
| Gross Profit | 0.73 | 1.22 | 2.44 | 1.32 |
| Gov't Grants (R&D and EMDG + Other Income) | 1.02 | 0.85 | 0.73 | 0.17 |
| Total Income | 1.75 | 2.07 | 3.17 | 1.49 |
| Total Expenses | 2.35 | 2.91 | 12.46* | 4.19 |
| Net Profit | -0.60 | -0.84 | -9.22 | -2.71 |



Total revenue for **FY18 +96% year-on-year to \$1.8m**, driven by a combination of both new client contracts and existing recurring revenue from customers in Australia and overseas.



Trend of **strong traction expected to continue in 2019**, with revenue expected from both a healthy pipeline of new potential clients and recurrent revenue from SaaS licensing arrangements.

* Includes circa \$5.23m of notional restructure expense (non-cash) costs relating to reverse takeover, restructure and re-listing, \$2.1m share-based payments expense (non-cash) and one-off transaction costs of \$900k





Key Product for Smart Cities: SenFORCE

SenSen caters for automated enforcement of every bylaw related to parking, including no-stopping, clearways, school zone, bus/taxi zones in addition to paid/permit parking enforcement. Highest accuracy of LPR even in extreme operating conditions.

SenFORCE delivers higher accuracy than both of the competitors below, which are limited to paid/permit parking enforcement only.



Arvoo
(ScanGenius)



SenSen Smart City Solutions

The SenSen technology platform allows us to acquire customers on a point product offering and upsell other solutions

Smart Platform for Smart Cities



Competition – Smart City Solutions

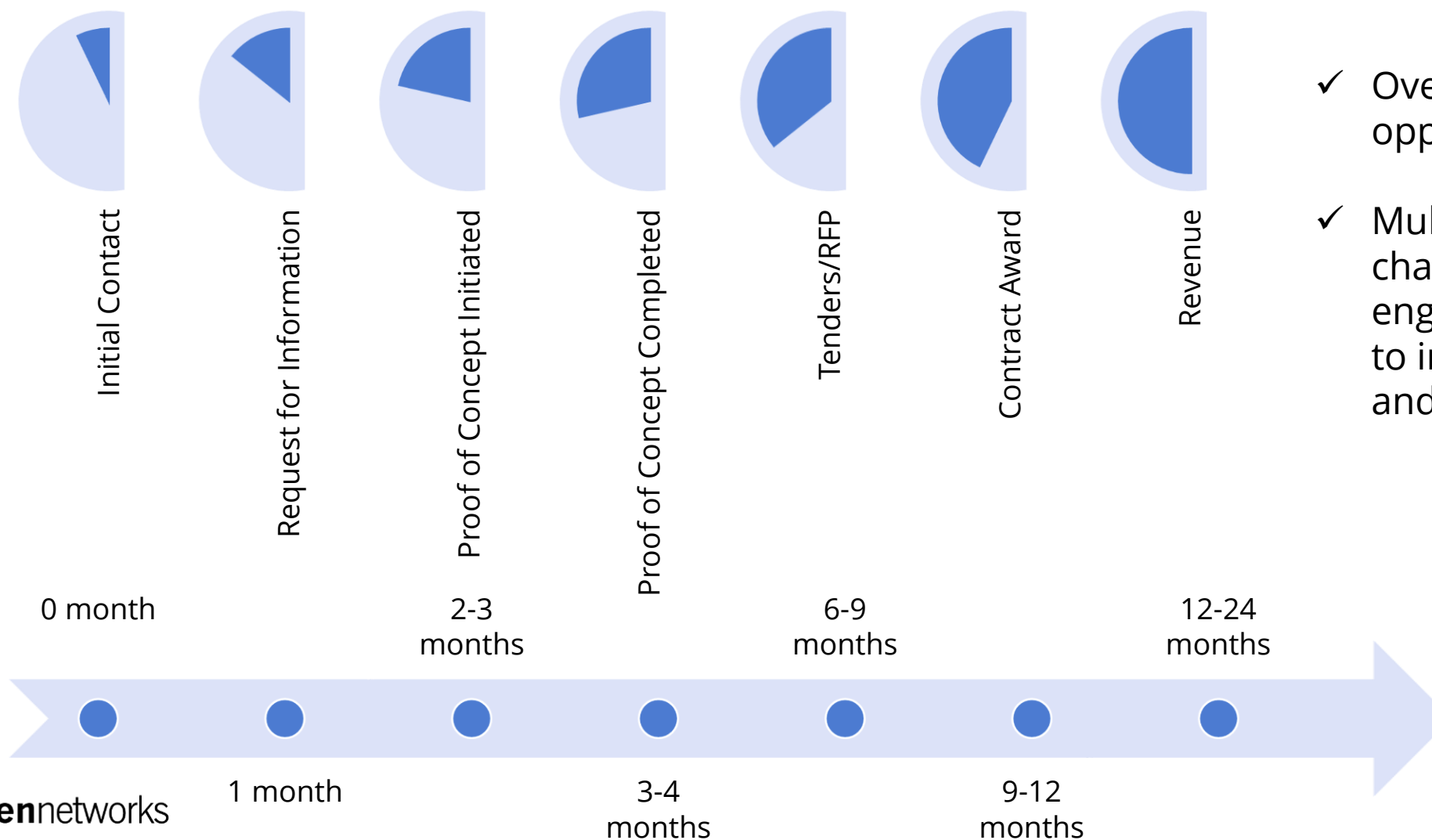
SenSen is unique

There is no other company that offers the breadth of solutions that we offer. SenSen consistently delivers higher accuracy at lower cost than competitors across multiple smart city use cases.

| Solution | Competitors | SenSen Advantage | Competitor Advantages |
|--------------------------------|-------------------------------------|--|--|
| Parking Enforcement - SenFORCE | Genetec, Arvoo, Sensor Dynamics | Higher accuracy and functionality | Incumbent in a sticky market, strong partner/channel network |
| Parking Guidance | Cleverciti, Parkam, Smart Parking | Camera independent solution, lower cost per bay | Strong partner/channel network, better UI/UX |
| Asset Audits | Roadbotics | Focused on signs and lines | Focused on road condition monitoring |
| Smart Surveillance | Agent VI, Avigilon, Ipsotek, Others | Higher accuracy, camera independence | Strong partner/channel network, better UI/UX |
| Road Safety | Gatso, Redflex, Jenoptix | Lower cost, low infrastructure, high accuracy | Strong legacy, strong partner/channel network |
| Tolling | Kapsch | Higher Accuracy, lower cost | Strong legacy, Strong partner/channel network |



Smart City Market – Sales Pipeline



- ✓ Over 120 customer opportunities in pipeline
- ✓ Multiple channels/distributors engaged and incentivised to increase the pipeline and shorten sales cycles



Gemineye

New Product Launch



Gemineye – New Product Launch

Gemineye will enable SenSen's smart city monitoring solutions to reach cities of all sizes, not just the mega cities

We estimate that this will expand the addressable market at least 10x

Lower cost, pay-as-you-go revenue model

Significantly shorter sales cycle

Strong endorsement by the market after launch

Extensive press coverage



Gemineye ANPR



- The smartphone app that offers cities and authorities worldwide an affordable, highly accurate solution for **Automatic Number Plate Recognition (ANPR)** and other smart city solutions, literally in the palm of their hands.
- By using off-the-shelf smartphones mounted using off-the-shelf mounting kits and white light illuminators, Gemineye can deliver high levels of ANPR performance
- Designed to offer flexibility, scalability and affordability to all cities globally



Gemineye Kerbside

- A smartphone in a patent pending enclosure powered by solar/battery/mains power, running Gemineye apps
- The data is sent to our cloud hosted software, SenBOS, for integration with downstream smart city applications
- Powered by SenSen AI to deliver the most advanced smart city monitoring solutions, including:
 - unauthorised rubbish dumping
 - illegal parking on streets
 - detecting vehicles of interest
 - determining occupancy of car parks
 - smart surveillance for citizen safety, eg. detecting people driving bikes on foot paths
 - generating amazing time-lapse images... and more
- Applications are limited only by imagination
- It takes less than one hour to have a fully installed system delivering results

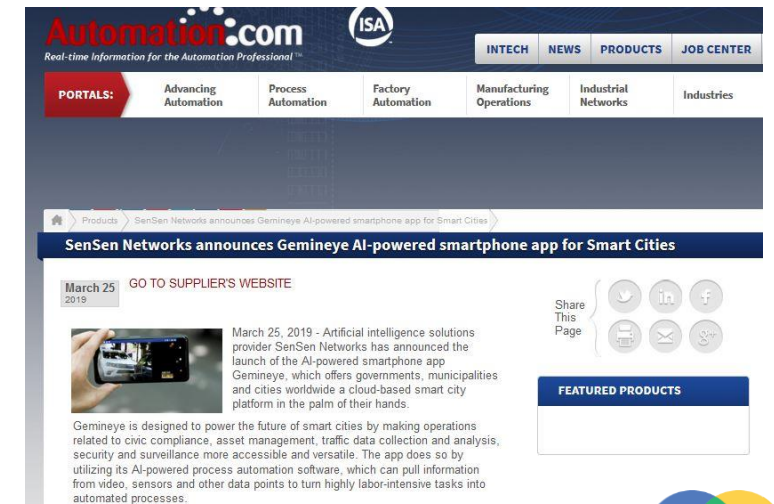
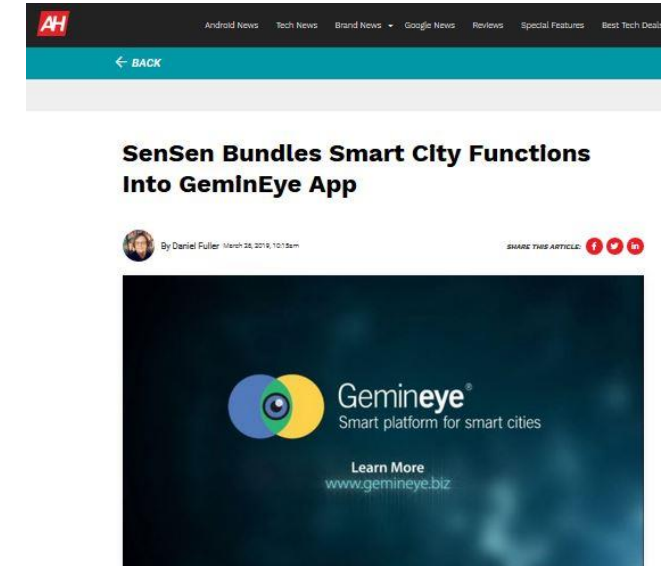
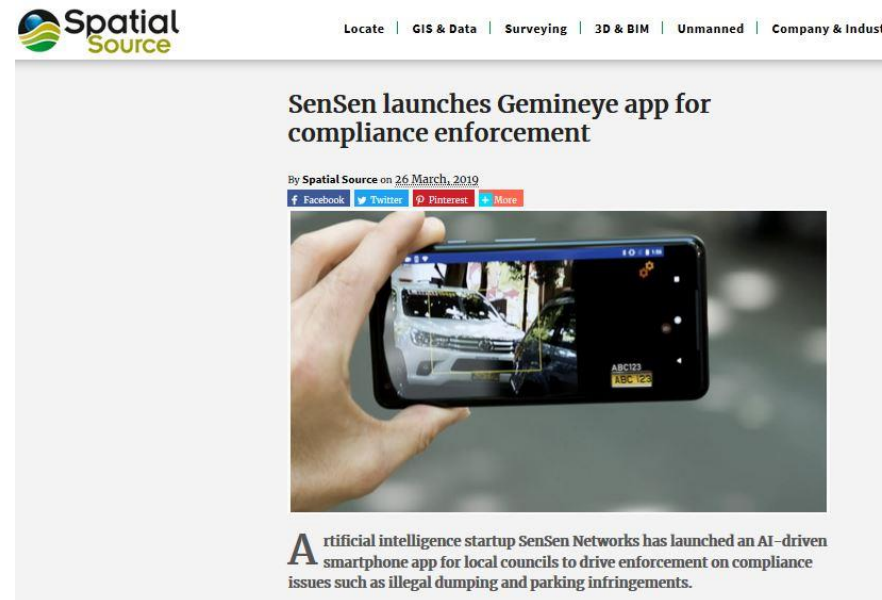
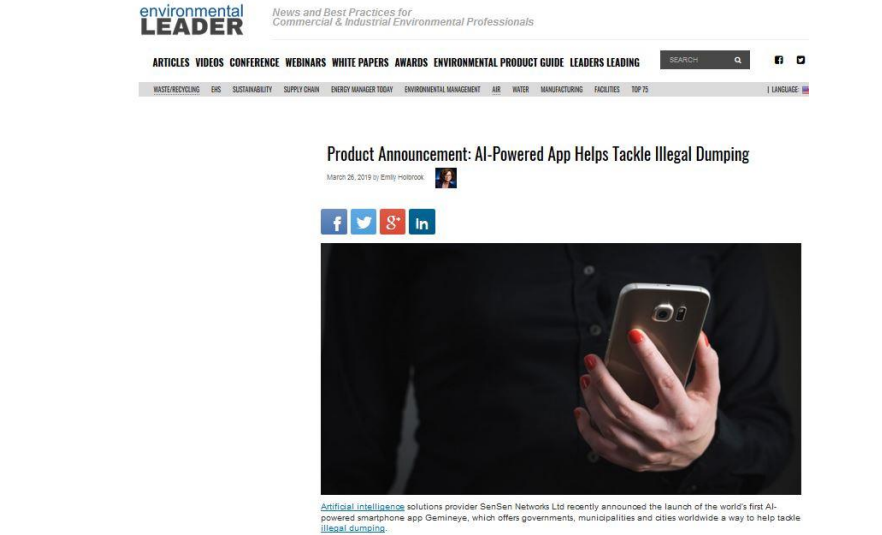


**A disruptive product offering enabling cities of all sizes
and budgets to become smart**

Extensive Recent Press Coverage



sensennetworks
MAKING CITIES SMARTER



Key Product: SenGAME



SenGAME revolutionises table game operations in casinos, allowing customers to accurately monitor traffic inflow and analyse the impact of non-gaming events.

Delivers accurate, immediately actionable insights regarding:

- Table activity and occupancy heat maps
- Floor yield management, hands per hour and dealer KPIs
- Type and value of every bet placed on the gaming floor
- Fraud detection
- Loyalty and accurate rating of players
- Bonus bets, jackpots and cash drop



SenSen's patent pending AI algorithms

For information on all products, visit
www.sensennetworks.com



Competition – Casino Table Games



lift your game

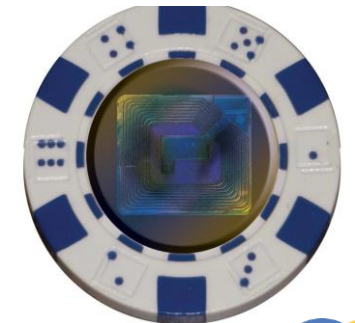
SenSen Networks SenGAME 3.0 delivers the highest accuracy of mixed stack height valuation including back betting. It is a plug and play solution which retrofits to existing tables that does not require changes to layouts, chips, dealer or player behaviour. It is inconspicuous and cost effective which is easy to install, calibrate and maintain.

Visit us during G2E Vegas at Stand #2236 for a live demo

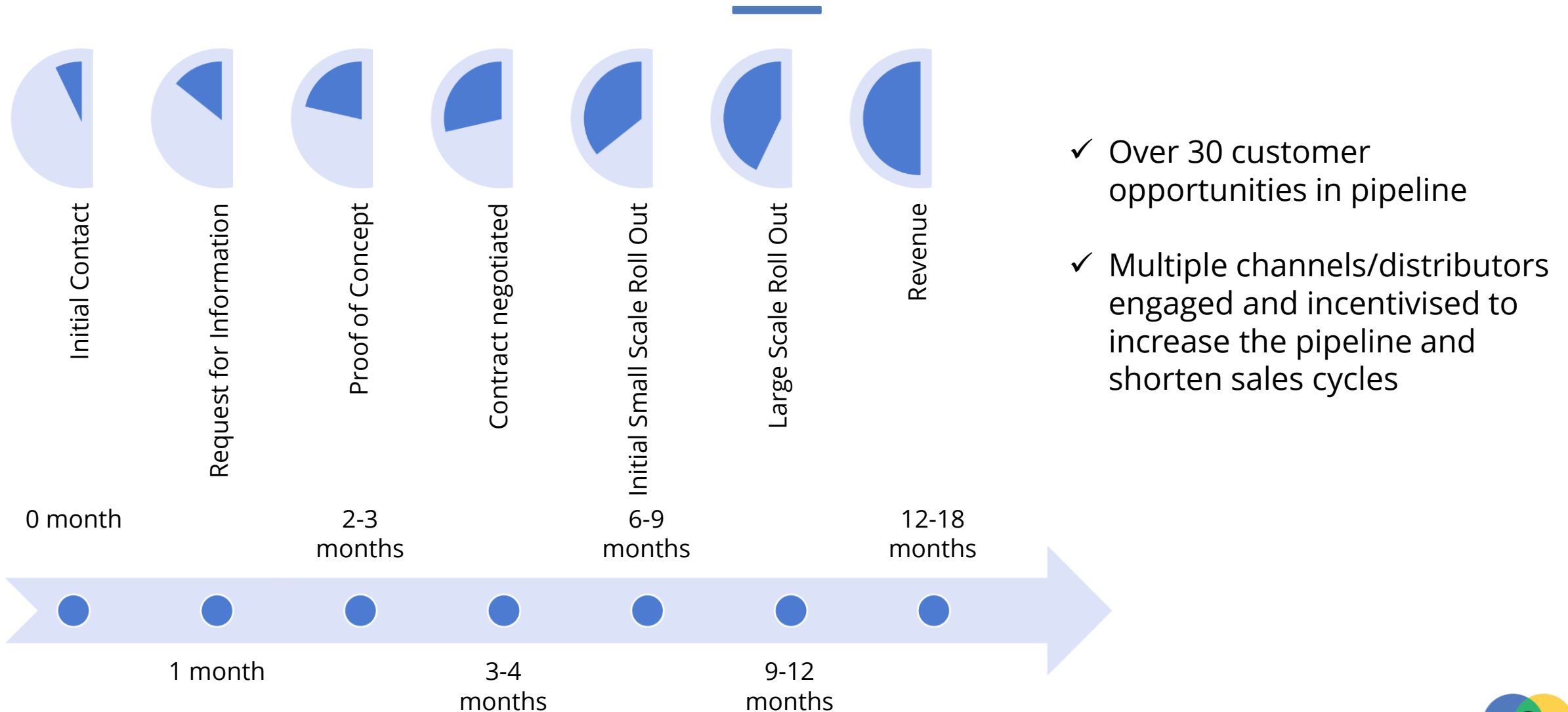


sensennetworks

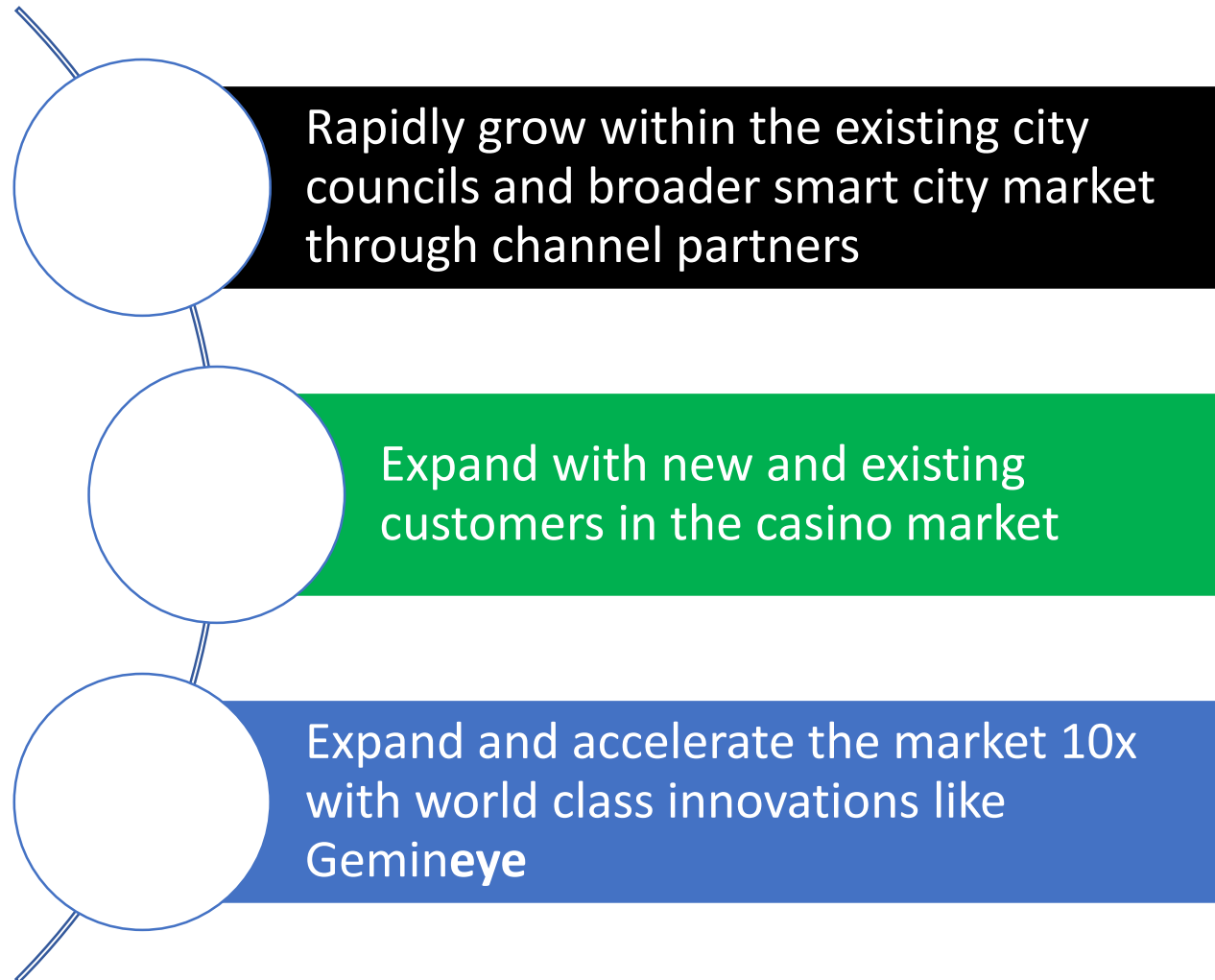
- SenSen Solution
 - is a complete retrofit – no change to the table or layout
 - A smart phone in a case... nothing more
 - Low cost and highly accurate
- Competitor
 - RFID chips, readers under the table
 - Extremely expensive



Casino Market - Sales Pipeline



SenSen Growth Strategy



New Customer Wins – FY19



Smart Cities

City of Cairns

ATB (Canada)

YMCA (Canada)

Riyadh

EVT (Thailand)



Casinos

Solaire Casino (Philippines)

Macau casino group

eConnect (USA)

SenSen has established a strong sales pipeline with **more than 150 active opportunities**. Every new customer adds to SenSen's recurrent revenue stream



Summary

Positives

- Large growing market
- Strong recurrent revenues
- Good upfront revenue
- Strong upsell opportunities
- Sticky customers - high life time value
- Accelerated momentum via reseller/distribution channels

Challenges

- The high cost and value of solutions has limited the existing market to large cities only
- Long sales cycle
- Tender driven - high level of uncertainty in the sales process
- Time to revenue 12-24 months from initial contact

Outlook

- Investing in breakthroughs like Gemineye will overcome the challenges outlined above
- Investing into empowering and incentivising channels to market will accelerate sales in the traditional large city and enterprise markets
- Invest in people and processes to support the increasing momentum



SenSen solutions
make
cities smarter
and
***enterprises more
efficient***





sensennetworks

Subhash Challa | CEO
subhash@sensennetworks.com
+61 409 082 952

David Smith | Executive Director
dsmith@sensennetworks.com
+61 414 239 84

Tim Dohrmann | Investor Relations
tim@nwrcommunications.com.au
+61 468 420 846

Unit 4, 71 Victoria Crescent, Abbotsford,
Melbourne, VIC 3067, Australia
Tel: +61 3 9417 5368

3 Spring Street,
Sydney, NSW 2000, Australia
Tel: +61 3 9417 5368

