



# Trangie Johnston

Managing Director

**Broken Hill Prospecting (ASX: BPL)**  
**Booth #48**

# Disclaimer

## Disclaimer

This presentation contains forward-looking statements that involve subjective judgement and analysis and accordingly, are subject to significant uncertainties and risks, many of which are outside the control of, and are unknown to, Broken Hill Prospecting Ltd ( "BPL"). In such circumstances, the forward-looking statements can be identified by the use of forward-looking words such as "may", "will", "expect", "intend", "seek", "estimate", "believe", "continue" or other similar words.

No representation, warranty or assurance is given or made in relation to any forward-looking statement by BPL or its representatives, In addition, no representation, warranty or assurance is given in relation to any underlying assumption or that any forward-looking statements will be achieved. Actual future events may vary materially from the forward-looking statements and the assumptions on which the forward-looking statements are based. Accordingly, presentation readers are cautioned not to place undue reliance on such forward-looking statements as a result of the uncertainties.

In particular, BPL wishes to caution readers that these forward-looking statements are based on economic predictions and assumptions on reserves, mining method, production rates, metal prices and costs (both capital and operating) developed by BPL management in conjunction with consultants.

This presentation and the forward-looking statements made in this presentation, speak only as of the date of the presentation.

Accordingly, subject to any continuing obligations under the Corporations Act and the Australian Securities Exchange Listing Rules, BPL disclaims any obligation or undertaking to publicly update or revise any of the forward-looking statements in this presentation, whether as a result of new information, or any change in events, conditions or circumstances on which any such statements is based.

## Competent Person Statement

The information in this presentation that relates to exploration results, Mineral Resources and Exploration Targets is based on information compiled by Mr Anthony Johnston, BSc (Hons), who is a Member of the Australian Institute of Mining and Metallurgy and is a full time employee of the Company. Mr Johnston has sufficient experience which is relevant to the style of mineralisation and type of deposits under consideration and to the activity which he is undertaking to qualify as a Competent Person as defined in the 2004 & 2012 Edition of the 'Australasian Code for Reporting of Exploration Results, Mineral Resources and Ore Reserves.' Mr Johnston consents to the inclusion in the announcement of the matters based on his information in the form and context that the information appears.

BPL confirms it is not aware of any new information or data that materially affects the information included in the original market announcement, and, in the case of estimates of Mineral Resources, that all material assumptions and technical parameters underpinning the estimates in the relevant market announcements continue to apply and have not materially changed. BPL confirms that the form and context in which the Competent Person's findings presented have not been materially modified from the original market announcement.

## Diversified Exploration & Development Company

 **World Class Regions**

 **Broken Hill Projects**

 **Thackaringa - Cobalt**

 **Murray Basin - HMS**

 **Asset Monetisation**

### Broken Hill Prospecting Limited ASX : BPL

Ordinary Shares on Issue	147,883,401
Listed Options	46,579,388
Market Cap (undiluted at 2 cps)	\$2.9m

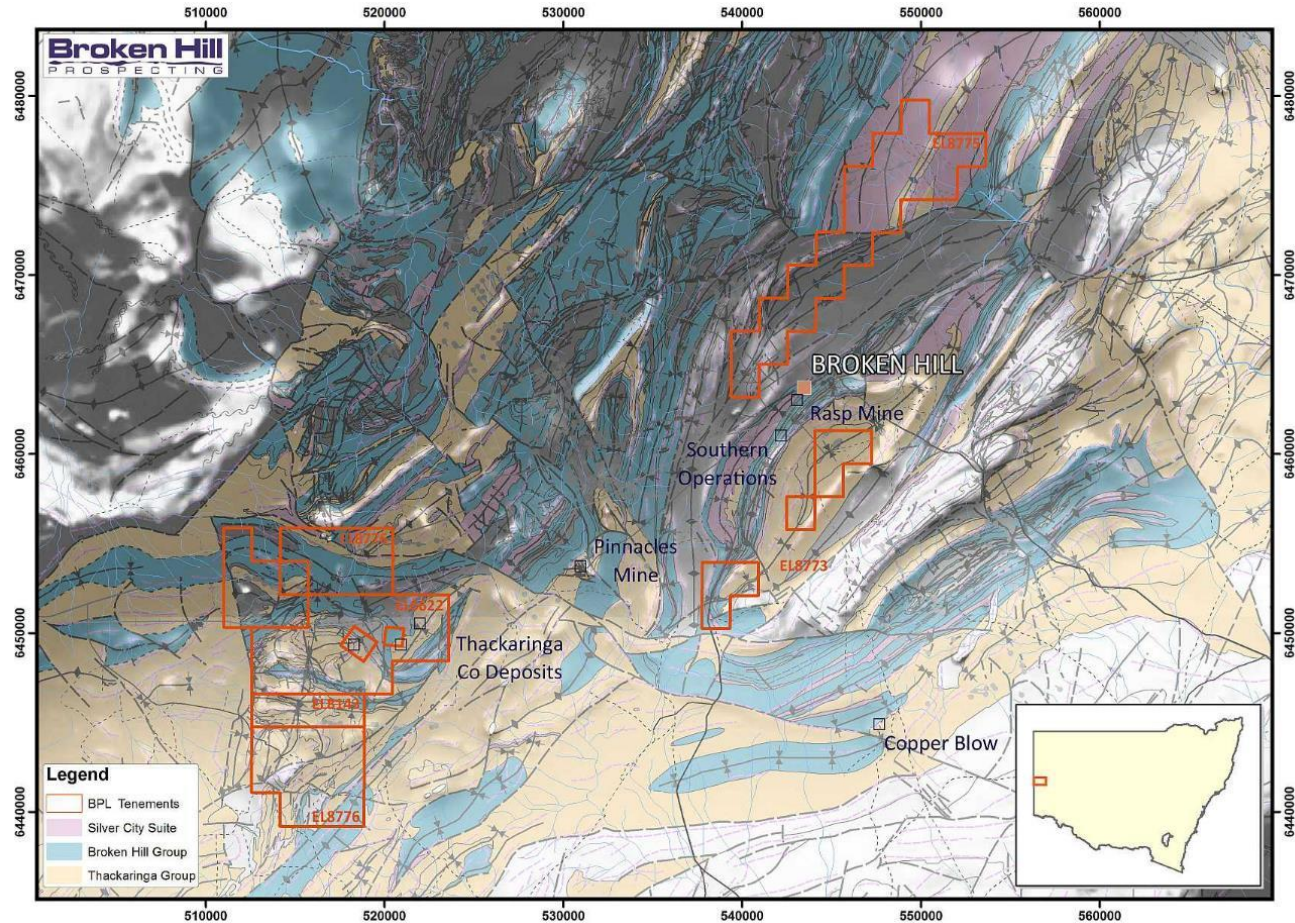
### Board of Directors & Management

Creagh O'Connor AM	Non Executive Chairman
Trangie Johnston	Managing Director & CEO
Geoff Hill	Non Executive Director
Matt Hill	Non Executive Director
Denis Geldard	Non Executive Director
Ian Morgan	Company Secretary



# World Class Broken Hill Region

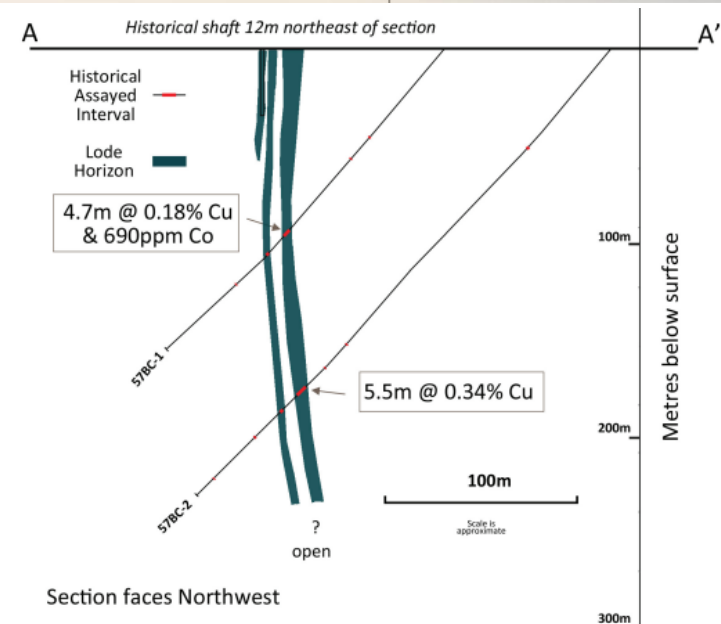
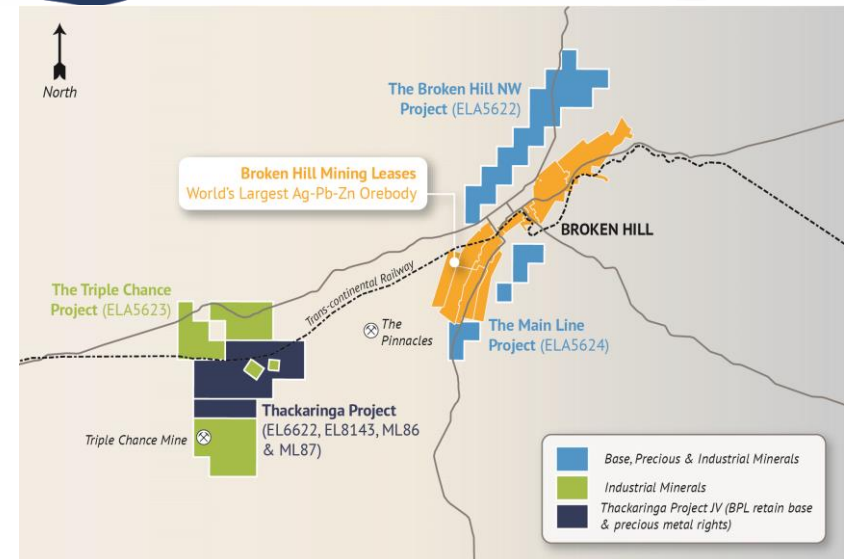
- Strategic expansion focused on base, precious and industrial minerals
- Numerous high quality, under-explored prospects, with excellent base metal potential
- 2018-2019 field season affected by ongoing severe drought conditions





# New Exploration Strategy

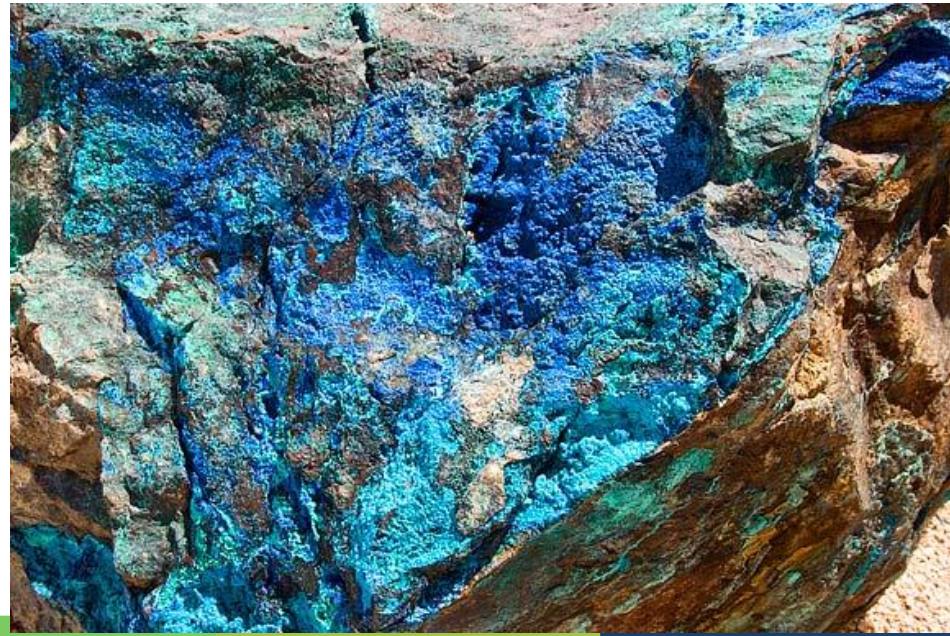
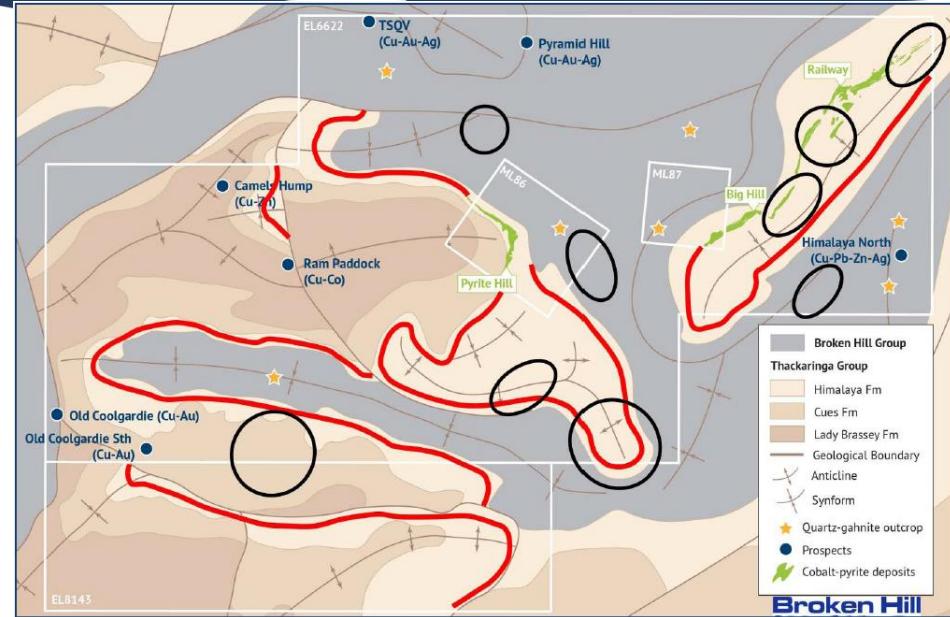
- Historically, Broken Hill exploration was biased towards Broken Hill type stratiform syn-genetic deposit models
- New regional Curnamona exploration strategy evolving incl IOCG styles:
  - New structural/stratigraphic controls
  - Major alkaline intrusive phases
  - Redox boundary between the Thackaringa and Broken Hill Group
  - BPL, Silver City Mineral, Impact Minerals, Havilah
- Burt & Catterson (Cu-Co-Au)
  - Cu-Co-Au mineralisation directly along strike from the Broken Hill line of lode in Thackaringa Group



Burt & Catterson Cross Section

# Thackaringa – Base/Precious Metals

- BPL retains all lead, zinc, copper, silver and gold mineralisation
- Numerous high quality, under-explored base and precious metals prospects
- Airborne EM geophysics, structural mapping and geochemical sampling programs – highlights anomalous base and precious metals up to 7.5% copper and 5.9% lead with high zinc, silver and gold
- Himalaya & Pyramid Hill prospects (Pb-Zn-Cu-Ag) ready for ground IP





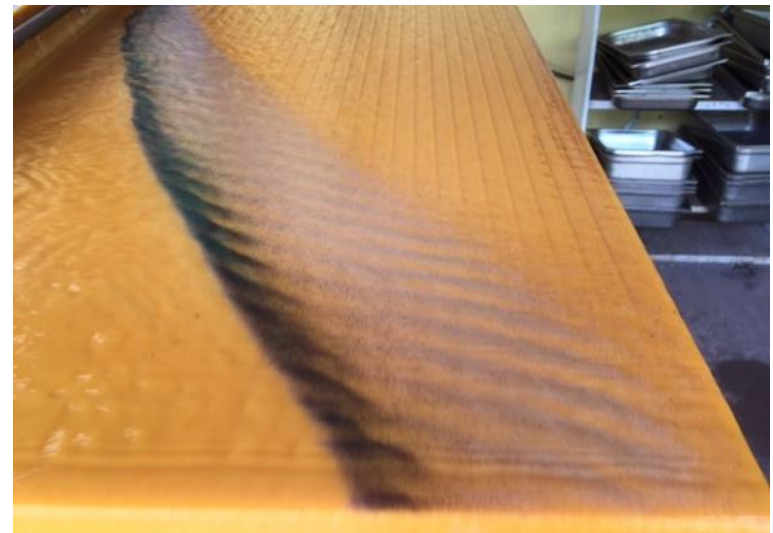
# Thackaringa Cobalt Project

- Thackaringa Cobalt Project JV (TJV) with Cobalt Blue (ASX:COB).
- TJV provides significant upside exposure for BPL
  - **BPL have 30% beneficial & 100% legal interest**
  - 2% net smelter return royalty
  - Retention of base & precious metals (lead, zinc, copper, silver and gold)
- Recent milestones
  - COB delivered PFS (June 2018)
  - Resources Upgrade (April 2019)
- First class infrastructure, pro-mining local community and supportive Government



# World Class Murray Basin

- New HMS business model successfully applied to the Murray Basin over the past 3 years
- Focus on high-grade, low-tonnage, shallow deposits with high value mineral assemblage
- Innovative development via low capex/low opex mobile, modular mining technology
- BPL has developed extensive IP with leading edge Industry groups
- Potential to develop and operate multiple operations across a broader project area
- High quality infrastructure – work force and transportation networks
- Largest tenement portfolio after extensive data compilation and prospectivity analysis

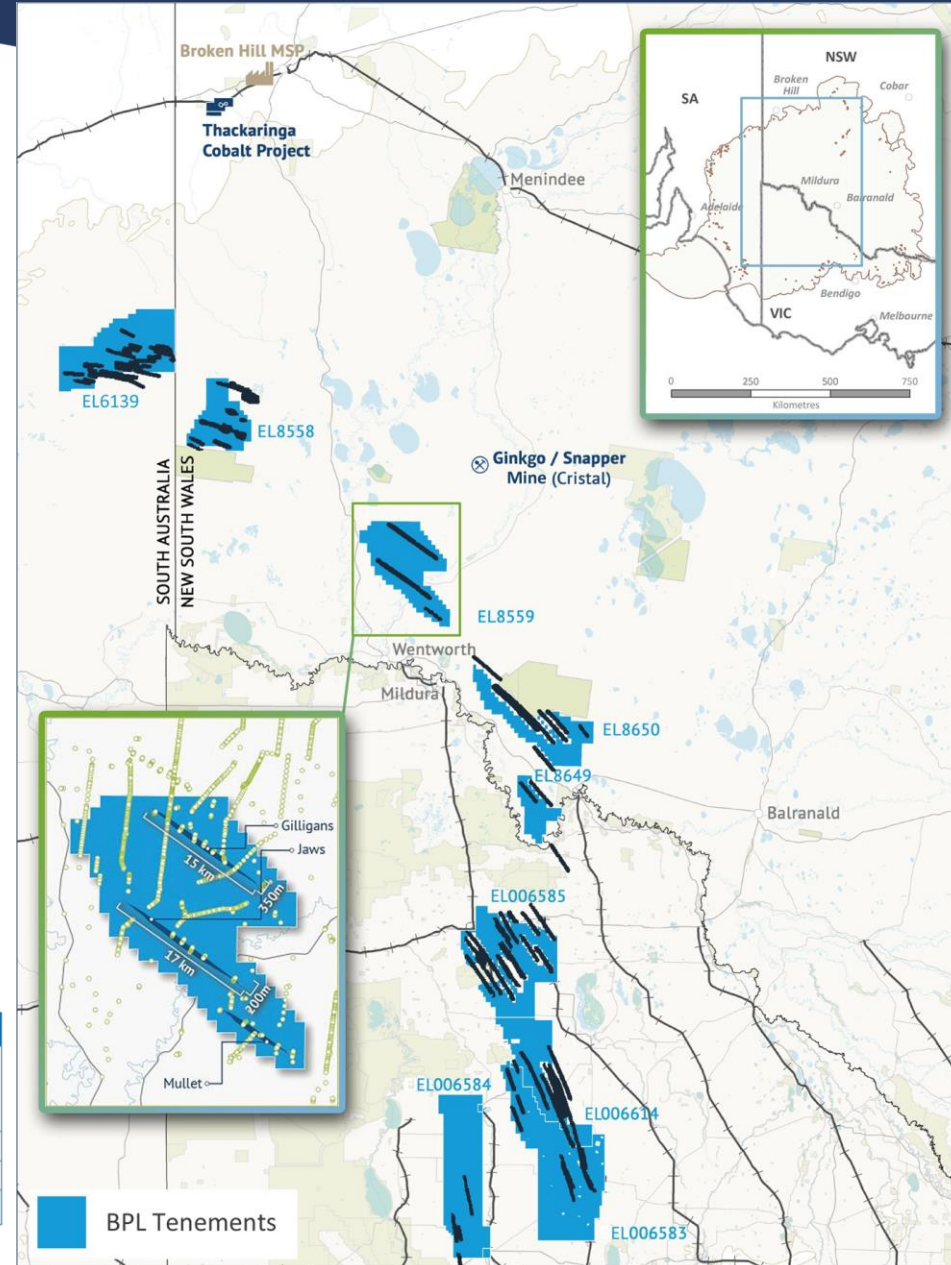




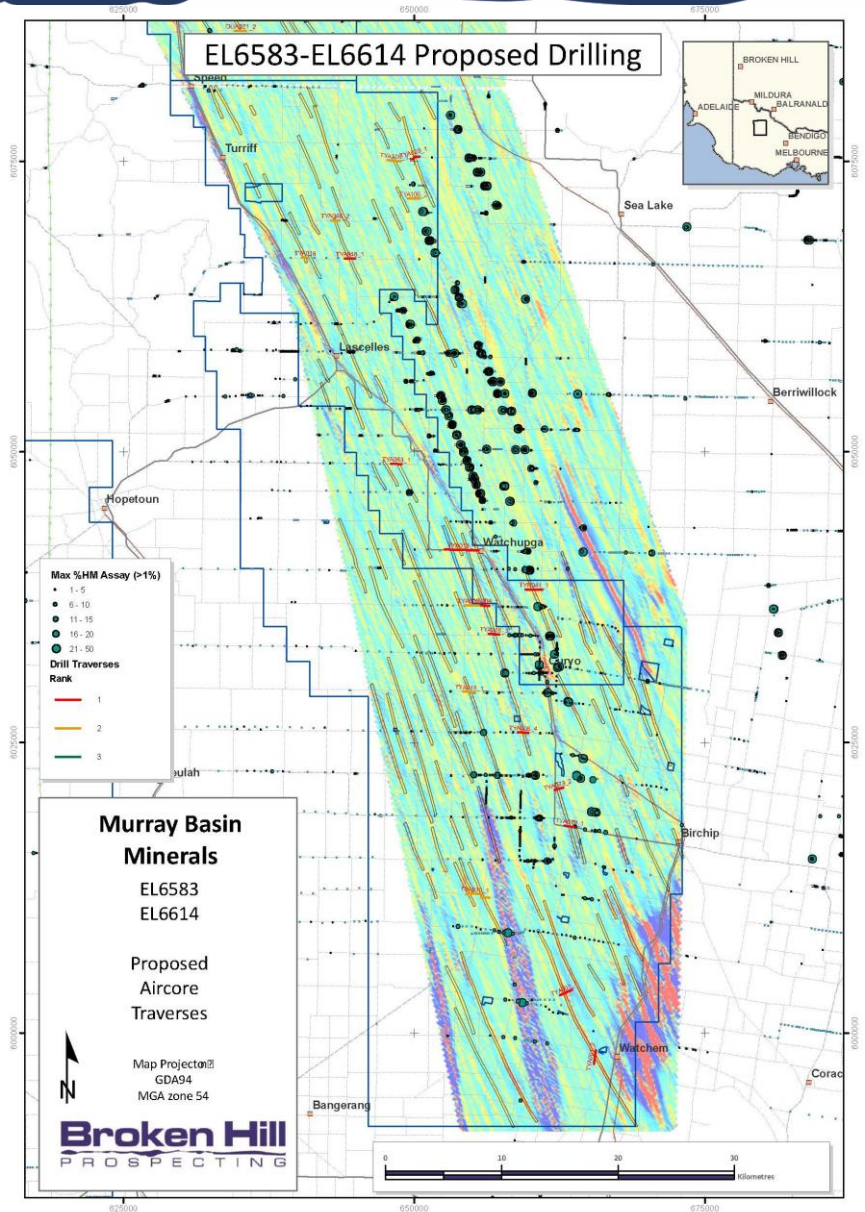
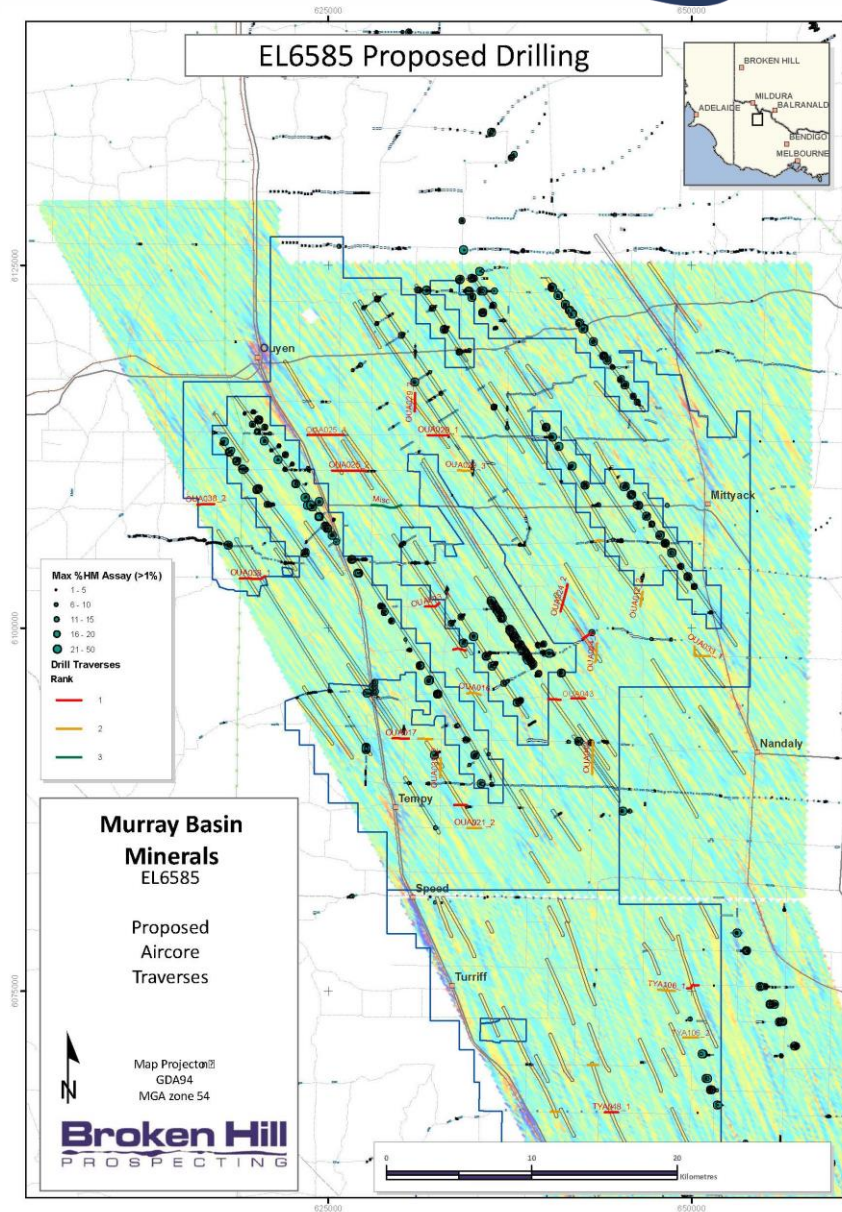
# First Class HMS Portfolio

- Entire Murray Basin Data Compilation
- \$100m exploration expenditure compiled
- 60,000 drill holes
- 2 million meters drilling
- Basement geology & geophysics
- Prospectivity analysis completed
- Gilligans & Jaws Resource Estimates

Summary of Mineral Resources							HM Assemblage				
Mineral Resource Category	Deposit	Material (Mt)	In Situ HM (Mt)	HM (%)	Clay (%)	Oversize (%)	Ilmenite (%)	Zircon (%)	Rutile (%)	Magnetic Leucoxene (%)	Non-Magnetic Leucoxene (%)
Inferred	Jaws	63	1.2	1.9	5	1	10	10	29	22	1
Inferred	Gilligans	50	0.8	1.6	2	2	8	9	23	20	2
<b>Total</b>		<b>113</b>	<b>2.0</b>	<b>1.8</b>	<b>3</b>	<b>1</b>	<b>10</b>	<b>10</b>	<b>26</b>	<b>21</b>	<b>2</b>



# Drill Ready Targets





## Diversified Exploration & Development Company

 **World Class Regions**

 **Broken Hill Projects**

 **Thackaringa - Cobalt**

 **Murray Basin - HMS**

 **Asset Monetisation**

### Broken Hill Prospecting Limited ASX : BPL

Ordinary Shares on Issue	147,883,401
Listed Options	46,579,388
Market Cap (undiluted at 2 cps)	\$2.9m

### Board of Directors & Management

Creagh O'Connor AM	Non Executive Chairman
Trangie Johnston	Managing Director & CEO
Geoff Hill	Non Executive Director
Matt Hill	Non Executive Director
Denis Geldard	Non Executive Director
Ian Morgan	Company Secretary

