

# Strike Energy Limited

Ocean Hill Farm Out  
EP495 – Perth Basin



# Important Notice



## Summary information

This presentation contains summary information regarding Strike Energy and its subsidiaries current as at 24 May 2019. The information in this presentation is of general background only and does not purport to be complete. The contents of this presentation should be considered in conjunction with Strike Energy's other announcements lodged with the Australian Securities Exchange available at [www.asx.com.au](http://www.asx.com.au).

## Not an offer

This presentation does not constitute an offer, invitation or recommendation to subscribe for, or purchase any security and neither this presentation nor anything contained in it shall form the basis of any contract or commitment.

## Not financial product advice

Reliance should not be placed on the information or opinions contained in this presentation. This presentation does not take into consideration the investment objectives, financial situation or particular needs of any particular investor. Any decision to purchase or subscribe for any shares in Strike Energy Limited should only be made after consideration of your own objectives and financial situation, making independent enquiries and seeking appropriate financial advice.

## Past performance

Statements about past performance provides no guarantee or guidance as to future performance, including in respect of the price of Strike shares.

## Future Statements

Statements contained in this presentation, including but not limited to those regarding the possible or assumed future costs, performance, dividends, returns, production levels or rates, oil and gas prices, reserve or resource potential, exploration drilling, potential growth of Strike Energy Limited, industry growth and any estimated company earnings are or may be forward looking statements.

Such statements relate to future events and expectations and as such involve known and unknown risk and uncertainties associated with oil, gas, geothermal and related businesses, many of which are outside the control of Strike Energy Limited, and are not guarantees of future performance.

Although the Company believes that the expectations reflected in these statements are reasonable, they may be affected by a variety of variables and changes in underlying assumptions which could cause actual results, actions and developments to differ materially from those expressed or implied by the statements in this presentation, including, but not limited to: price fluctuations, actual demand, drilling and production results, reserve estimates, regulatory developments, project delays or advancements and approvals and costs estimates.

Subject to any continuing obligations under applicable law and the Listing Rules of ASX Limited, Strike Energy Limited does not undertake any obligation to publicly update or revise any of the forward looking statements in this presentation or any changes in events, conditions or circumstances on which any such statement is based.

## Competent person's statements

The information in this presentation that relates to resource estimates is based on information compiled or reviewed by Mr A. Farley who holds a B.Sc in Geology and is a member of the Society of Petroleum Engineers. Mr A. Farley is Manager Geoscience for the Group and has worked in the petroleum industry as a practicing geologist for over 16 years. Mr A. Farley has consented to the inclusion in this report of matters based on his information in the form and context in which it appears.

Mr Tony Cortis (M.Sc. Geology) of Igesi Consulting has consented to the inclusion in this report of matters based on his information in the form and context in which they appear. Mr Cortis has over 29 years of industry experience, 28 of which were with Shell International, and is a member of APEGA and the AAPG. He has extensive technical and delivery experience in all three Unconventional Resource play types: tight clastic, shale and coal bed reservoirs. He has actively worked on CBM projects in the Bowser Basin, the Western Canada Sedimentary Basin and in the Ordos Basin of China. He has also worked on numerous conventional clastic and carbonate plays worldwide.



# EP495 – Ocean Hill

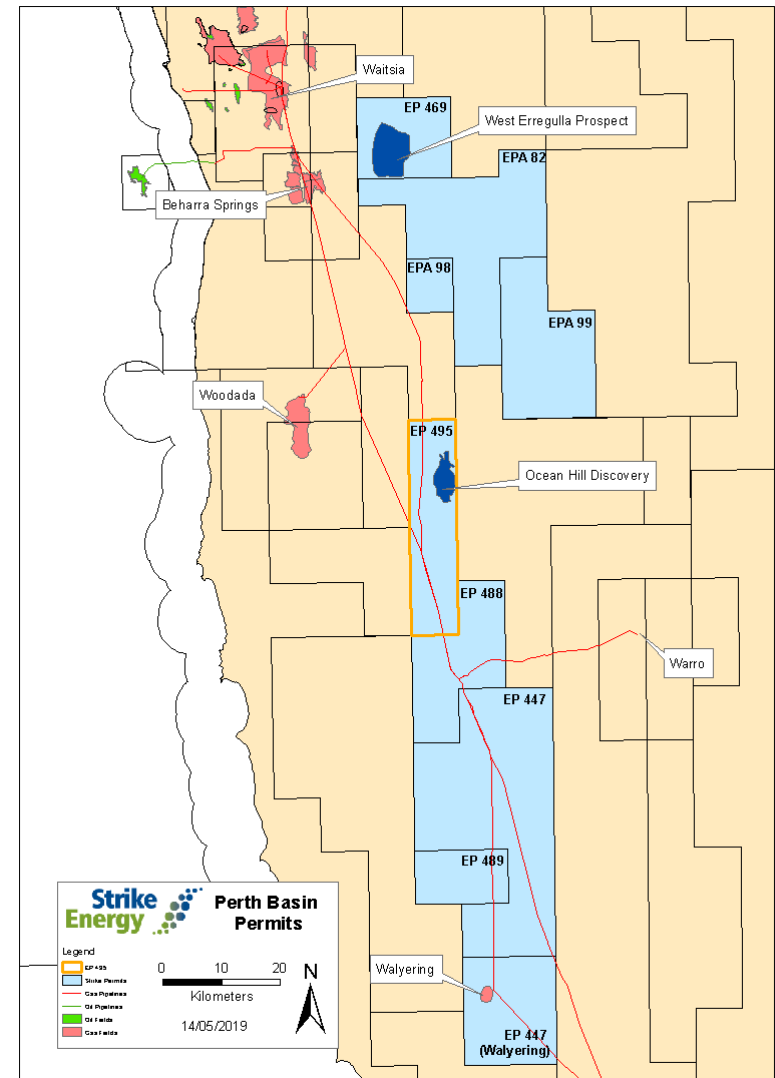
## 1. Discovered resource in Ocean Hill-1 (1991)

Recoverable Gas: 360 BCF (2C Contingent Resource)<sup>a</sup>

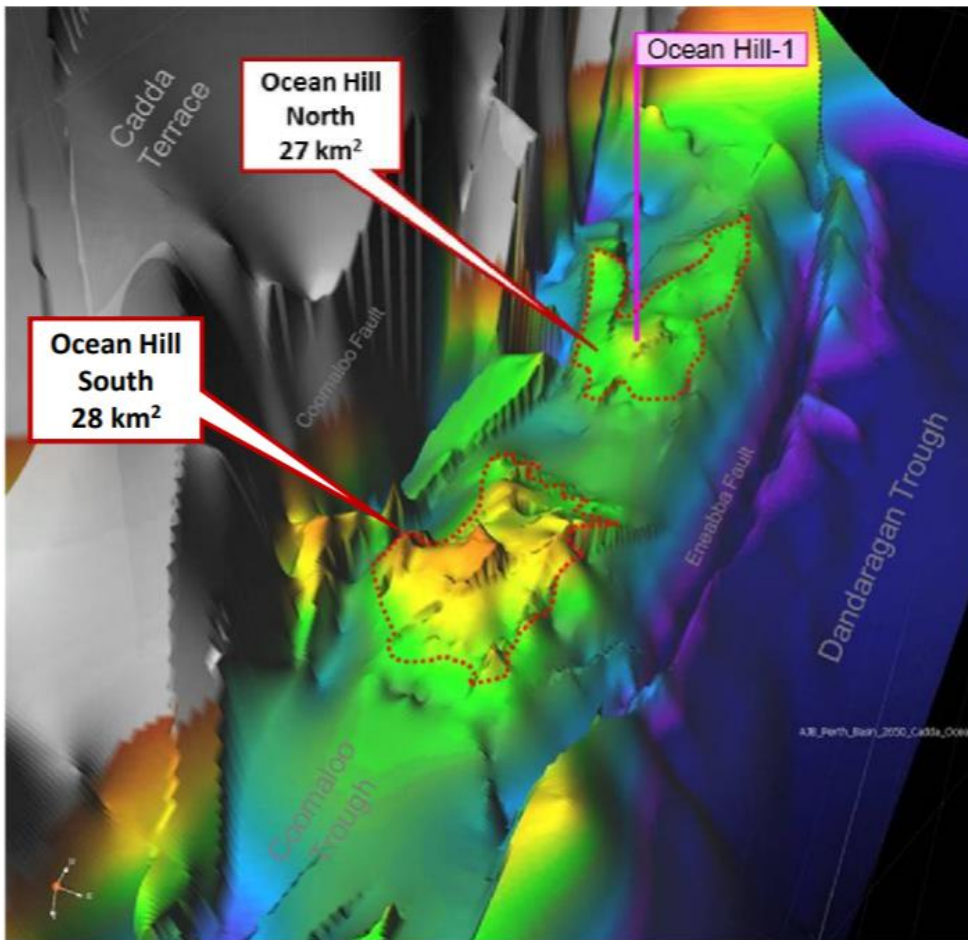
Associated Condensate: 1.2 mmbbls (2C Contingent Resource)<sup>a</sup>

2. New wet gas opportunities resulting from Strike G&G analysis
3. Permit has good well and seismic control
4. Permit is adjacent to infrastructure
5. Strike is a proven competent operator
6. Strike owns 100% of permits to the south

***Strike is offering a 40% non-operated position in exchange for a full carry on 250km<sup>2</sup> of 3D seismic (~\$3.2mln)***



# Ocean Hill: Two Promising Closures, but a Disappointing Well Result – New takeaways



**Strike's cutting edge understanding of the basin opens up a series of new opportunities**

## History

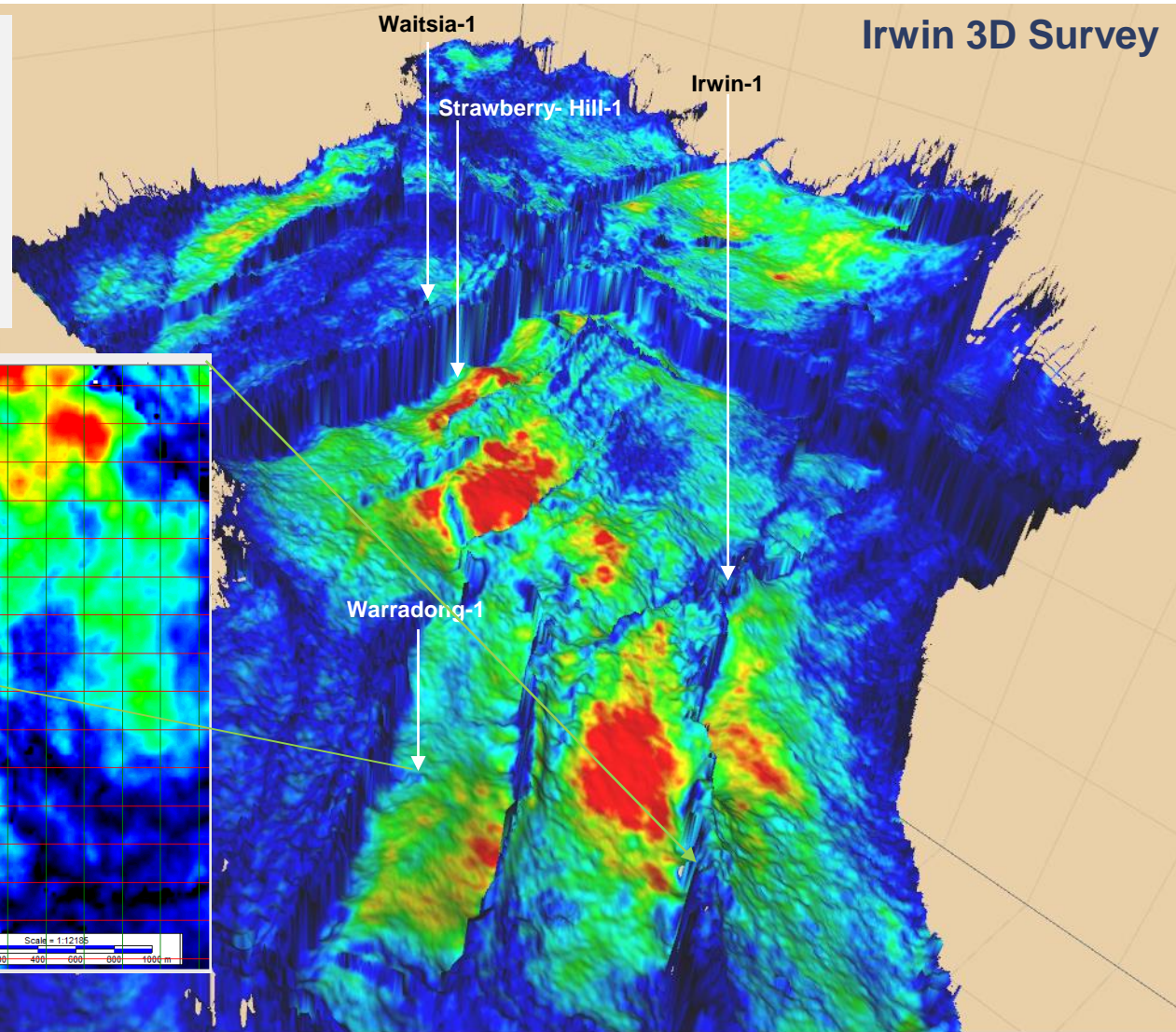
- Ocean Hill-1 was drilled in 1991 to a TD of 3,838m
- Tested a simple four way dip closed anticline. Main objectives were Early Jurassic Cadda Formation and Cattamarra Coal Measures
- Significant gas shows encountered through Early Jurassic section from 3,077m to Total Depth (total 761m). DST-2 flowed at 0.7mmscf/d.
- Electric Log analysis indicates over 100m net gas pay within multiple stacked sands

## New Takeaways

1. Working trapping geometry
2. Heterogeneous sand quality
3. Well placing is key which can only be informed by 3D seismic acquisition
4. Amplitudes align with good quality sands

# 3D Visualisation: Hydrocarbon migration via major faults to near Top Jurassic proven throughout the basin

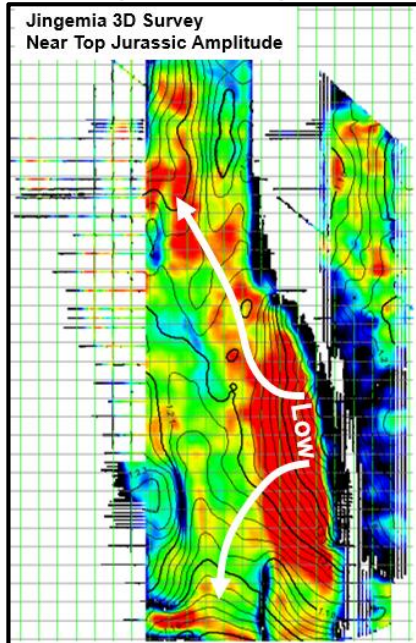
Amplitude patterns in near Top Jurassic Reflector in Irwin 3D show patterns suggestive of charge from extensional faults into coarser-channel sands in low on grabens and subsequent in-layer, buoyancy-driven migration.



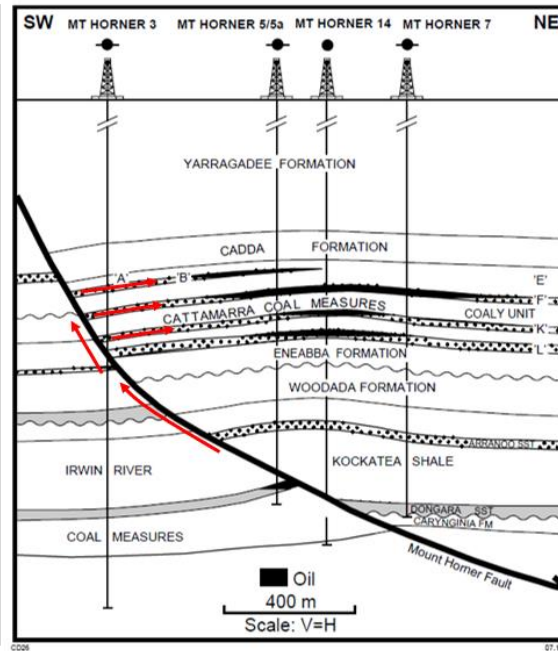


# Hydrocarbon migration analogue in Mount Horner & Jingemina Fields

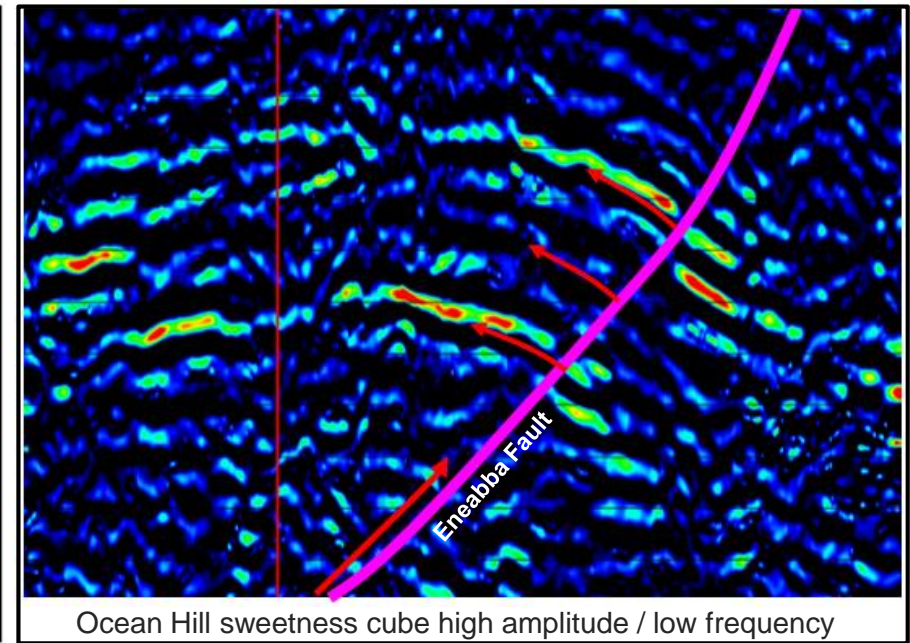
## Jingemina Migration



## Mount Horner Migration



## Ocean Hill Line B889-319 Sweetness

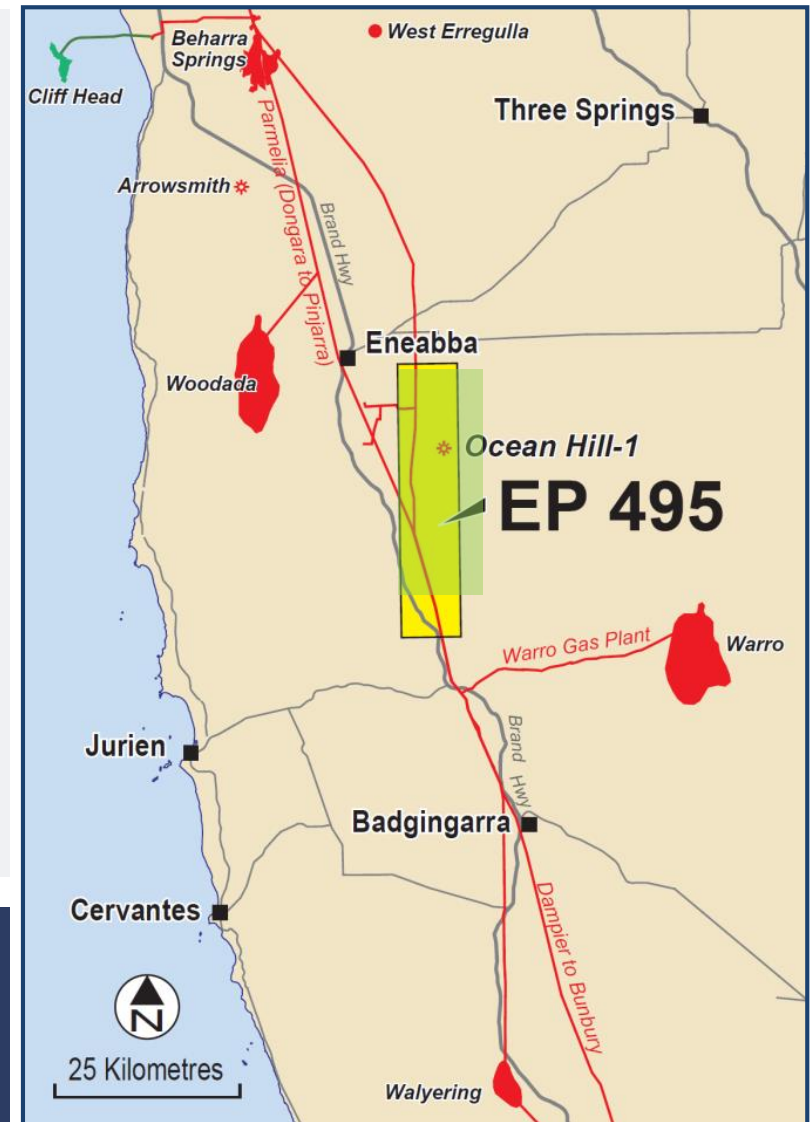


- Hydrocarbons from the Kockatea shale migrate up major regional faults (Eneabba at Ocean Hill)
- Hydrocarbons move into porous coarse sands when encountered on migration pathway
- Good quality, hydrocarbon filled reservoir exists in compartments of the original total Ocean Hill structure across both top and intermediate Cattamarra.

# A unique opportunity to enter well positioned acreage on ground floor terms with the Basin's premier explorer

1. Strike is offering a 40% non-operated position in exchange for a full carry on 250km<sup>2</sup> of 3D seismic. (circa \$3.2mIn)
2. Conducting marketing June to August.
3. Final negotiations September.
4. Execute SPA Q4/19
5. Q1/Q2-20 shoot 3D

[stuart.nicholls@strikeenergy.com.au](mailto:stuart.nicholls@strikeenergy.com.au)



**Strike**  
**Energy**

