



Exploring Senegal's Golden Corridor

Corporate Presentation June 2019

Compliance Statements

The material in this presentation (“material”) is not and does not constitute an offer, invitation or recommendation to subscribe for, or purchase any security in Chesser Resources Ltd (“CHZ”). Nor does it form the basis of any contract or commitment. CHZ makes no representation or warranty, express or implied, as to the accuracy, reliability or completeness of this material. CHZ, its directors, employees, agents and consultants shall have no liability, including liability to any person by reason of negligence or negligent misstatement, for any statements, opinions, information or matters, express or implied, arising out of, contained in, or derived from, or any omissions from this material except liability under statute that cannot be excluded. Statements contained in this material, particularly those regarding possible or assumed future performance, costs, dividends, production levels or rates, prices, resources or potential growth of CHZ, industry growth or other trend projections are, or may be, forward looking statements. Such statements relate to future events and expectations and, as such, involve known and unknown risks and uncertainties.

Actual results and developments may differ materially from those expressed or implied by these forward looking statements depending on a variety of factors. CHZ will not undertake any obligation to release publicly any revisions or updates to any forward looking statements to reflect events, circumstances or unanticipated events occurring after the date of this presentation except as required by law or by any appropriate regulatory authority.

This presentation is a visual aid and is not intended to be read as a stand alone document. The material contains selected and abbreviated summary information about CHZ and its subsidiaries and their activities as at the date of this presentation. The material is of general background and does not purport to be complete.

References to ASX Market Announcements

This Presentation contains information, including exploration results, extracted from the following ASX market announcements reported in accordance with the JORC Code (2012):

- i. Diamba Sud auger drilling exploration results reported on pages 3, 6, 8, 9, 10 and 18 of this presentation were reported in ASX Announcements dated 22 February 2018, 28 May 2018 and 27 August 2018.
- ii. Diamba Sud historical RC drilling results reported on page 3, 6, 7 and 12 of this presentation were reported in an ASX Announcement dated 3 April 2017.
- iii. Diamba Sud RC drilling results reported on pages 3, 8, 9, 10, 11, 13, 15, 16, 17, 18, 19 and 21 of this presentation were reported in an ASX Announcement dated 25 March 2019, 10 April 2019, 6th May 2019 and 14th of May 2019.
- iv. The private placement of \$1 million dollars mentioned on slide 4 and 12 of this presentation was reported in an ASX Announcement dated May 17 2019.

The Company is not aware of any new information or data that materially affects the information contained in the referenced ASX market announcements.

Competent Person's Statement

The information in this presentation that relates to Exploration Results is based on information compiled by geologists employed by Boya SAU (a wholly owned subsidiary of Chesser Resources) and reviewed by Mr Michael Brown, who is a member of the Australian Institute of Geoscientists (MAIG). Mr Brown is the Managing Director of Chesser Resources Limited. Mr Brown is considered to have sufficient experience deemed relevant to the style of mineralisation and type of deposit under consideration, and to the activity that he is undertaking to qualify as a Competent person as defined in the 2012 edition of the “Australasian Code for Reporting of Exploration Results, Mineral Resources and Ore Reserves” (the 2012 JORC Code). Mr Brown consents to the inclusion in this report of the matters based on this information in the form and context in which it appears.

None of the information in this presentation constitutes an offer to sell, or the solicitation of an offer to buy, any securities in the United States of America (United States). This presentation (or any part of it), may not be released or distributed directly or indirectly, to persons in the United States.

Strategic land package of over 400km² in Eastern Senegal gold province

Proximity to numerous large scale gold deposits, across Birimian greenstone belt

DIAMBA SUD: three high grade targets identified from widely spaced maiden drill program completed in Q1 2019 (4700m)

NORTHERN ARC: Multiple significant oxide and fresh rock intercepts

18m @5.56 g/t gold, 10m @2.72 gold,
8m @ 3.46g/t gold (oxides)

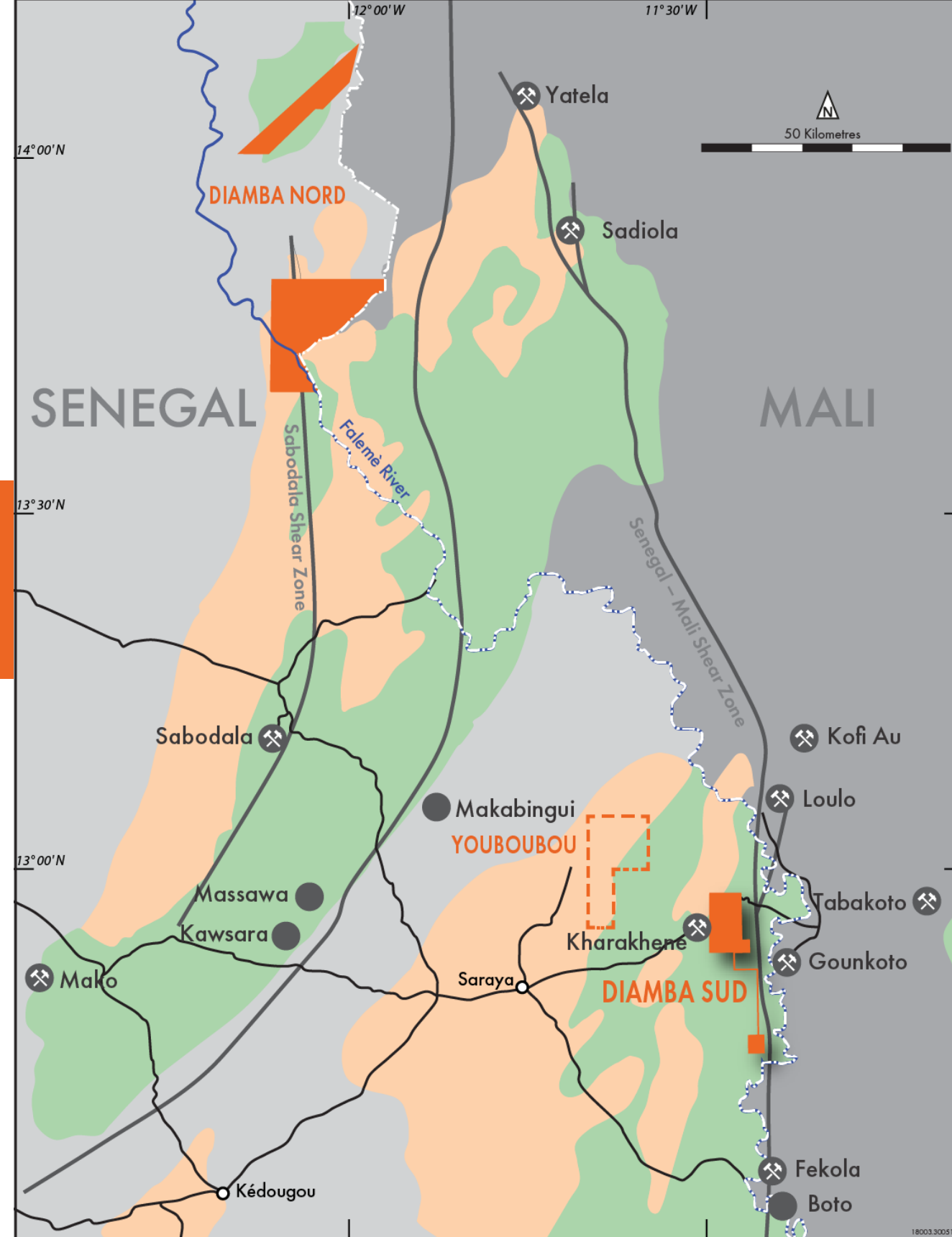
12m at 3.65g/t gold , 11m at 3.54g/t gold,
5m at 3.18g/t gold, (fresh rock)

WESTERN FLANK: 2km long untested mineralised structure identified

6m at 7.79 g/t gold, 32m @ 1.29g/t gold, incl
3m at 5.21 g/t gold

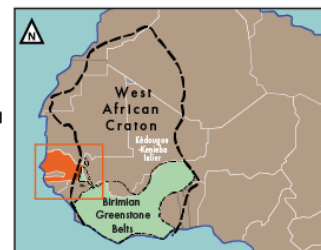
SOUTHERN ZONE: 1km² anomalous zone;

14m @ 2.85g/t gold, incl 4 @ 4.43g/t gold,
6m @ 4.70g/t gold, 19m @ 1.49g/t gold, 4m
@ 6.51g/t gold, incl. 2m @ 12.00g/t gold



SENEGAL PROJECT LOCATIONS

- Gold Mine (pickaxe icon)
- Advanced Project (black dot icon)
- Granite (orange square icon)
- Chesser Project Area (orange square icon)
- Country Border (dashed line icon)
- Mafic Units (green square icon)



EXPERIENCED MANAGEMENT AND BOARD

CAPITAL STRUCTURE

248.8m

OUTSTANDING SHARES

A\$9.95M

MARKET CAP
at A\$0.04/Share

~A\$8.5M

ENTERPRISE VALUE

~A\$1.5M*

CASH BALANCE
as at Mar 2019

A\$0

DEBT

TOP 20 SHAREHOLDERS: 43%

MANAGEMENT

MICHAEL (MIKE) BROWN
Managing Director & CEO

Former CEO and geologist with over 25 years' experience, working in exploration and mining in Australia, Indonesia, Chile and Argentina.

GARETH O'DONOVAN
Exploration Manager

Former Chairman of SRK Exploration, 10+ years working in various regions in Africa (including Senegal) with Anglo American Gold, fluent French speaker.

BOARD

SIMON O'LOUGHLIN
Non-Executive Chairman

Non-Executive director of Bod Australia Limited, and Petrathem Limited. Non-Executive Chairman of Oklo Resources.

SIMON TAYLOR
Non-Executive Director

Managing Director of Oklo Resources and Non-Executive director of Bod Australia and ARC Exploration.

STEPHEN KELLY
Executive Director, CFO & Company Secretary

Qualified Australian Chartered Accountant with more than 25 years' experience.

* Includes \$1m from May 17 private placement.

PROLIFIC MULTI MILLION OUNCE GOLD REGION

World-class underexplored province in Eastern Senegal's Birimian Greenstone Belt

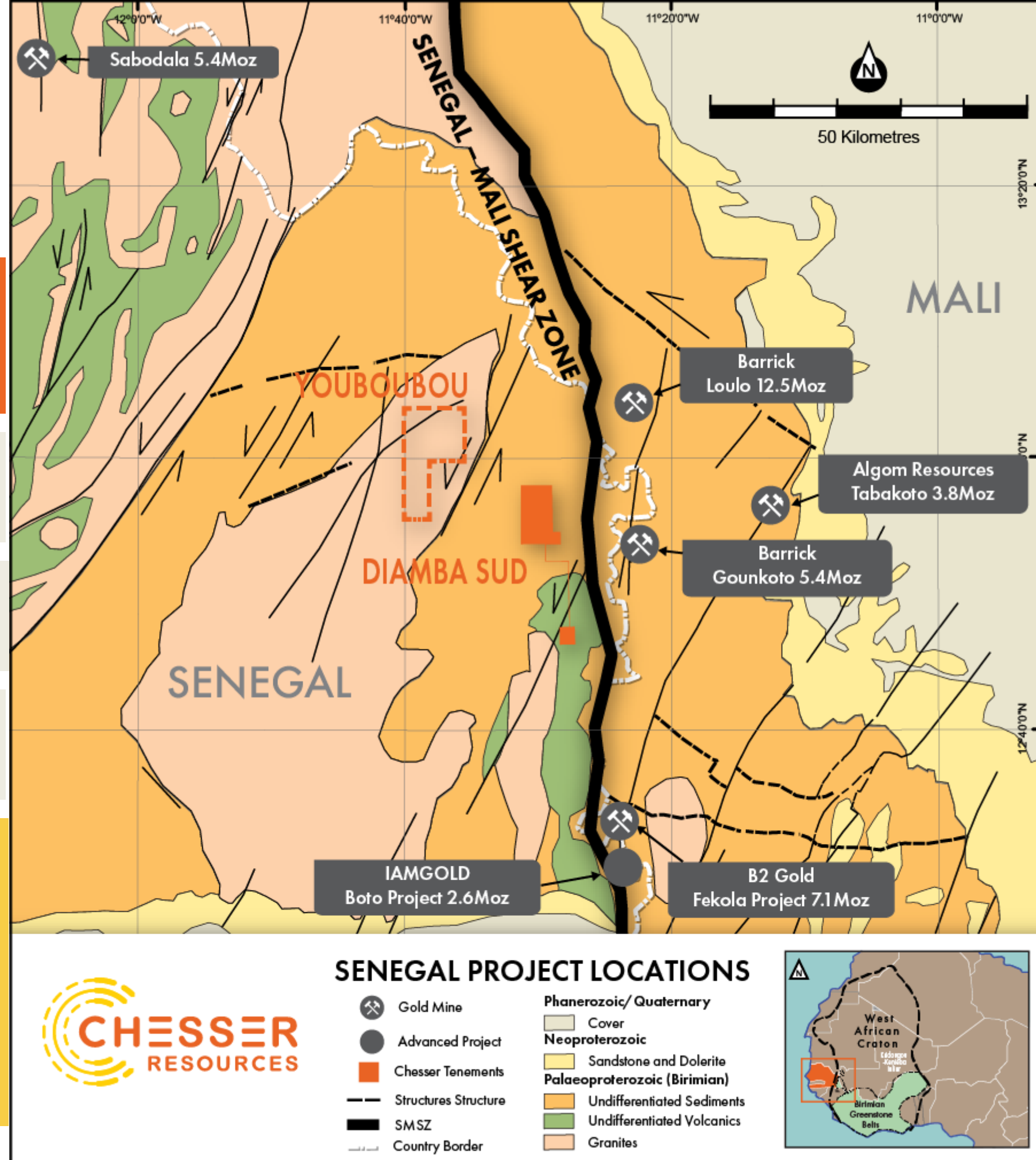
All deposits are adjacent to SMSZ, hosted on a splay off it.

Dominant N and NE structural control on mineralisation

Hosted by pyrite with strong alteration envelope

Diamba Sud: Nearology and characteristics;

- ✓ 2km to west of SMSZ
- ✓ Overlies 2 splays off the SMSZ
- ✓ Northerly trend
- ✓ High grade gold in pyrite with strong K alteration



FLAGSHIP DIAMBA SUD PROJECT

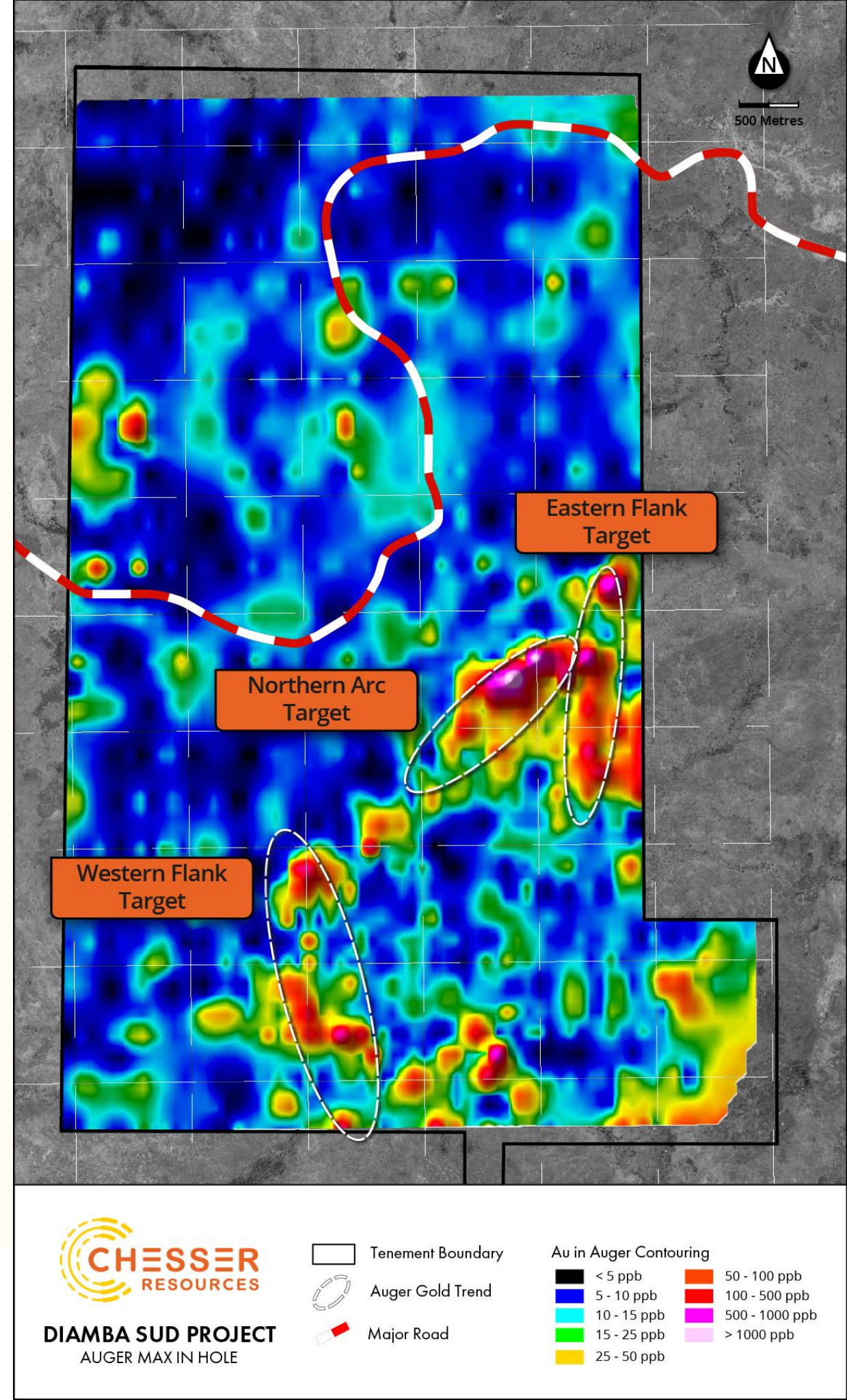
Identification of multiple large high-grade gold geochemical anomalies:

- Property acquired via way of acquisition of a private company and ASX listed company
- 100% owned, no royalties
- Wide spaced auger program completed initially.

Subsequent infill program;

- Auger to top of saprolite program identified a large ring like gold geochemical anomaly, as well as other follow up areas
- Circular area roughly correlates to granitoid intrusion
- High priority targets, tested in early 2019 by first pass wide spaced drilling;
 - Northern Arc
 - Western Flank
 - Eastern Flank, and
 - Southern Zone

Numerous other follow up exploration targets



DIAMBA SUD DISCOVERIES

Three high grade targets defined following testing of gold geochemical anomalies:

WESTERN FLANK

2km long untested mineralised structure identified.

- **6m @ 7.79 g/t gold** from 39m
- **32m @ 1.29 g/t gold**, including **3m @ 5.21 g/t gold** from 29m (*drilled 2016*)

NORTHERN ARC

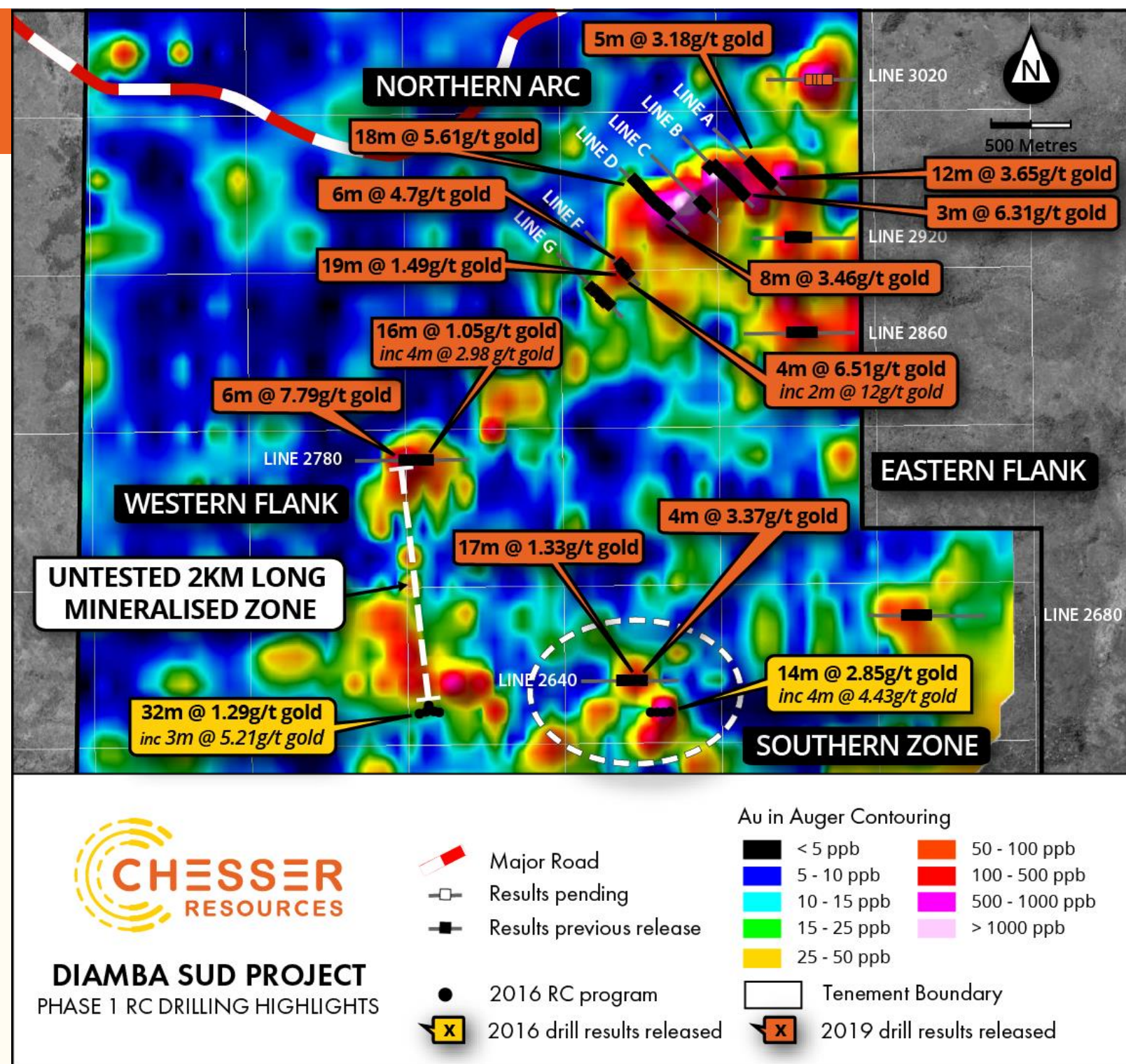
Oxide and fresh rock intercepts, including:

- **18m @ 5.56 g/t gold**, **10m @ 2.72 g/t gold**, **8m @ 3.46g/t gold** (oxides)
- **12m @ 3.65g/t gold**, **11m @ 3.54g/t gold**, **5m @ 3.18g/t gold**, (fresh rock)

SOUTHERN ZONE

- **6m @ 4.70g/t gold**, **19m @ 1.49g/t gold**, **4m @ 6.51g/t gold**, incl. **2m @ 12.00g/t gold**
- **14m @ 2.85g/t gold**, incl **4 @ 4.43g/t gold** (*drilled 2016*)

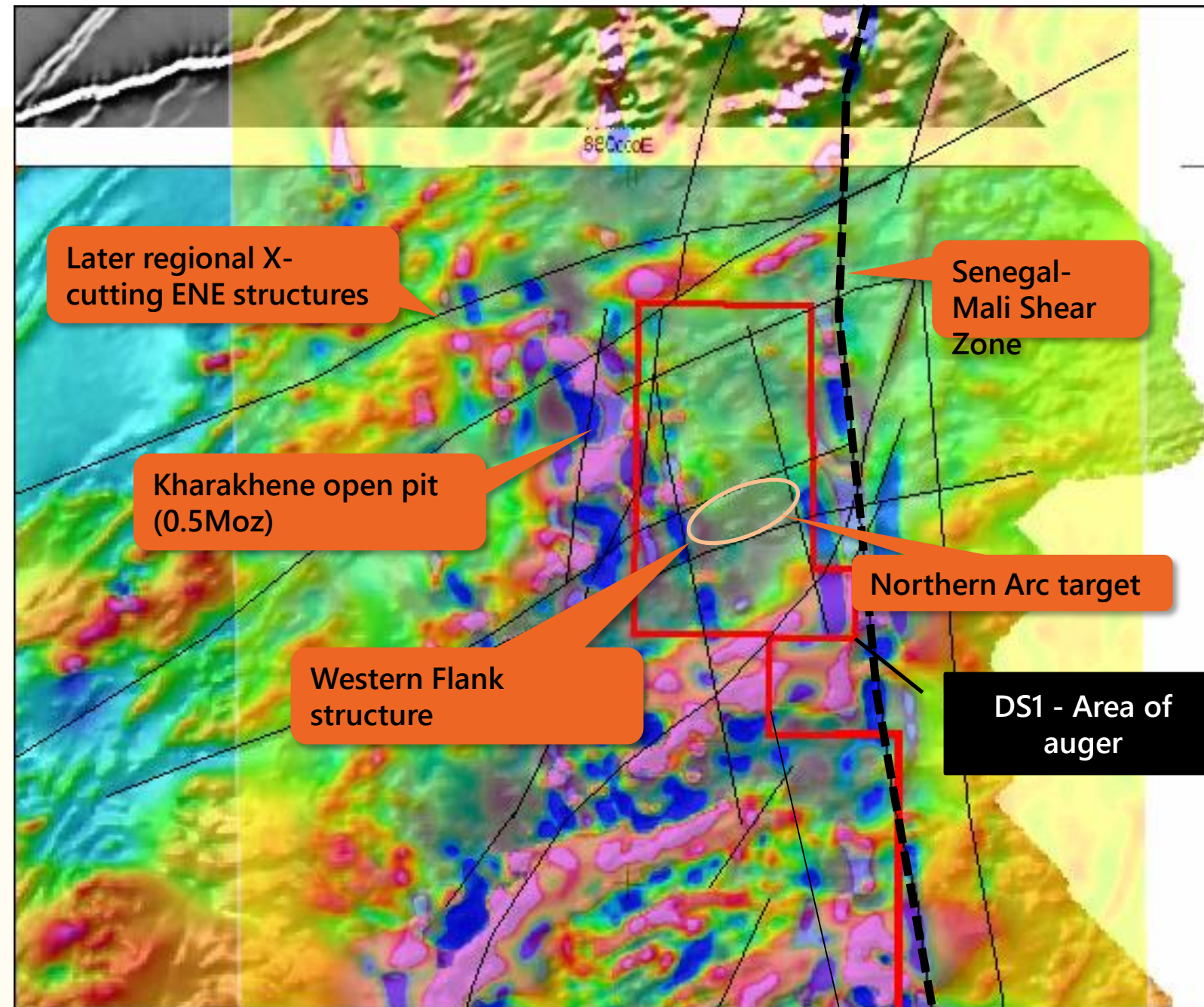
Numerous other follow up exploration targets



DIAMBA SUD - AERO MAGNETICS/TEMPEST GEOPHYSICAL SURVEY INTERPRETATION

Widely spaced airborne remote sensing undertaken on behalf of Government

- Identifies SMSZ ~2km to east of DS1
- ENE trending structures on both sides of SMSZ (Late staged?)
- NNW trending structure coincident with Western Flank
 - Splay off SMSZ?
- Northern Arc area may represent a dilational jog or tension zone between the two NNW structures

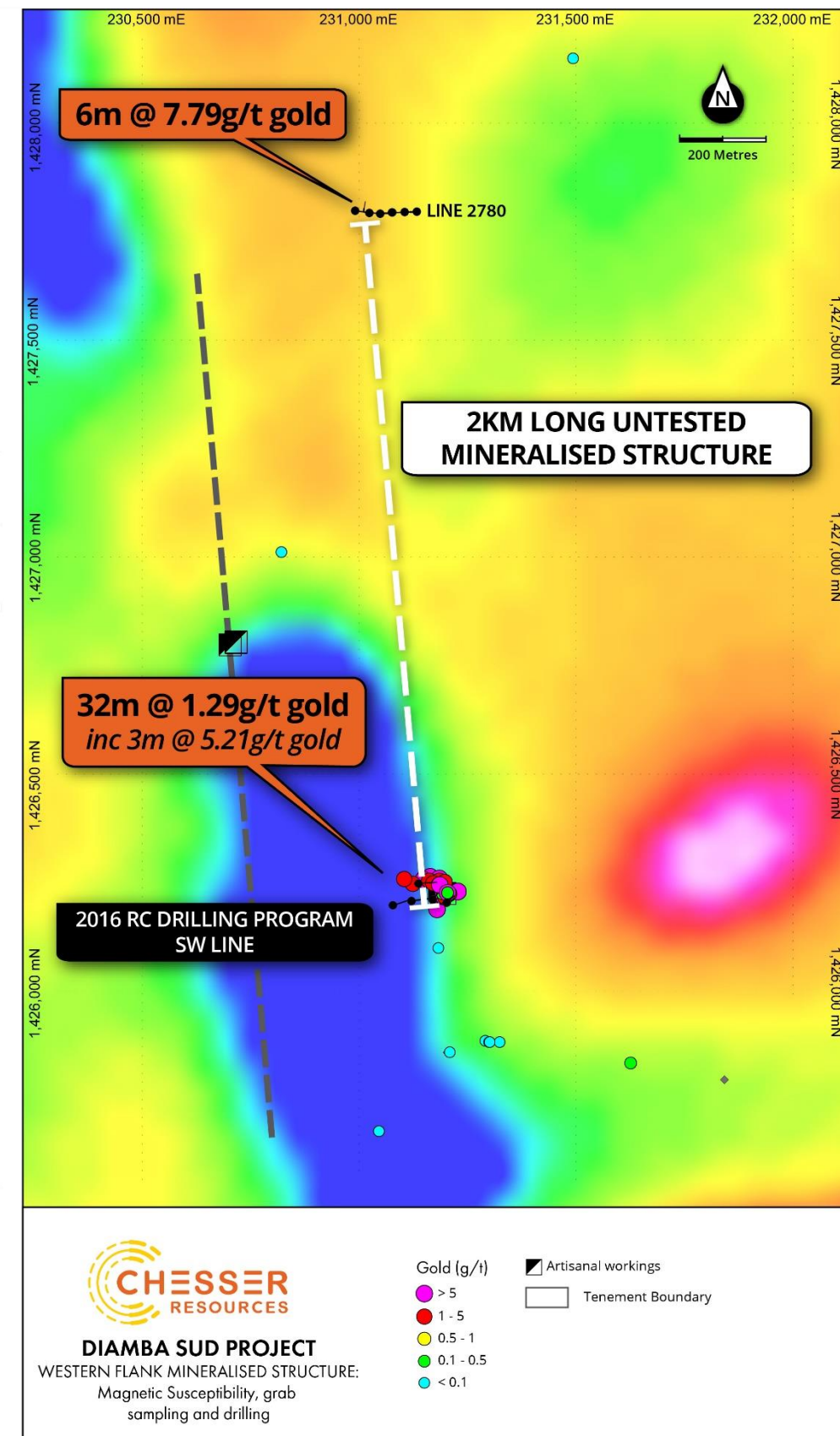
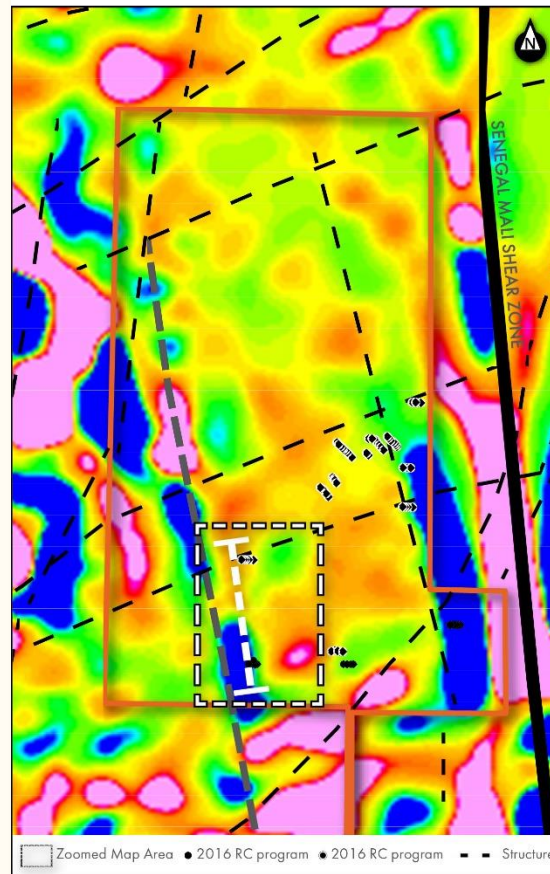


WESTERN FLANK TARGET

Potential 2km Long Mineralised Structure

High grade mineralisation along a trend aligned with an airborne magnetic linear feature

- DSR0052; 6m @ 7.79 g/t gold from 39m
- DS0002RC; 32m @ 1.29 g/t gold, incl 3m @ 5.21 g/t gold from 29m
 - Two drill holes 2km apart, defining a potential mineralised structure of at least 2km in length
 - Structure may be a splay of the SMSZ
- Artisanal miners' grab samples from mullock piles returned up to 12 g/t gold
- Potential for further parallel structures based on artisanal mining to the west

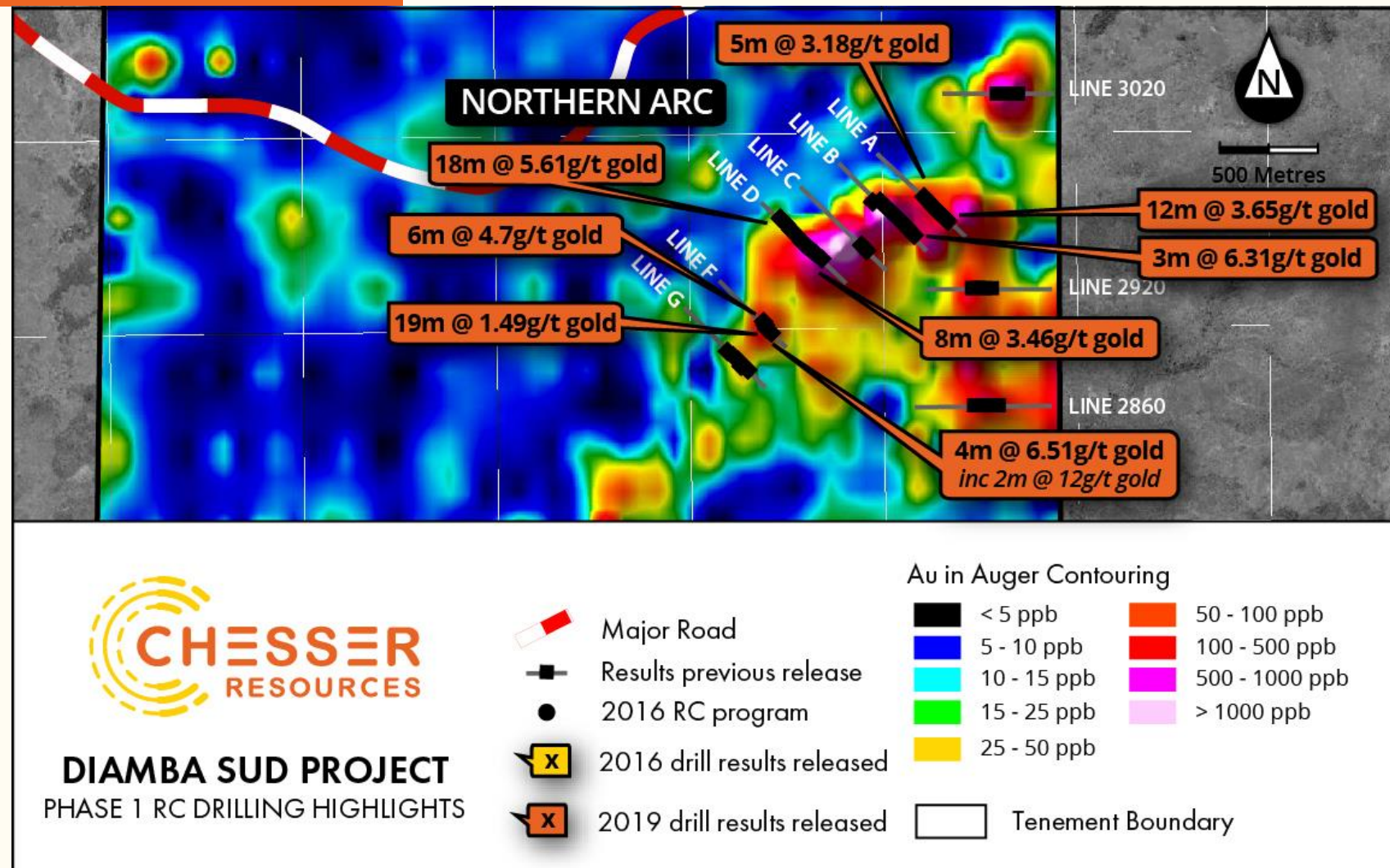


NORTHERN ARC TARGET

Potential for a Large Plumbing System

High grade gold, including;

- 18m at 5.61g/t gold from 6m, inc 8m at 11.84g/t gold (oxides)
- 12m at 3.65g/t gold (oxide-fresh)
- 5m at 3.18g/t gold (fresh)
- 8m at 3.46g/t gold (oxide-fresh)
- 3m at 6.31g/t gold (fresh)
- 10m at 2.72g/t gold (oxide)



Large Scale Alteration system present

- Strong alteration halo around high grade mineralisation, as observed at Goukoto, Yalea (Loulo) and Fekola on eastern side of SMSZ
- Geology consists of felsic and intermediate volcanics, greywackes, granites/diorites and felsic intrusives

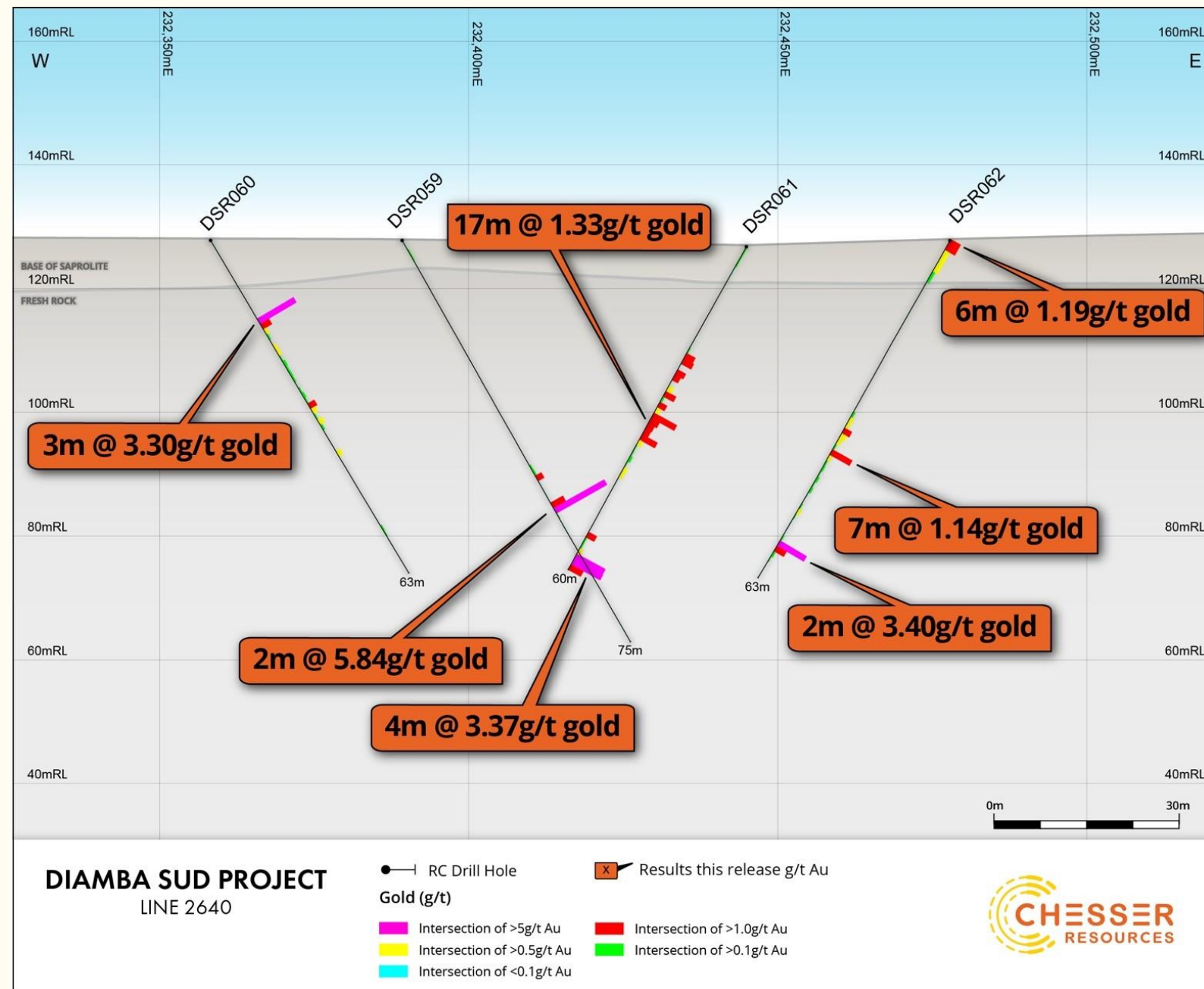
SOUTHERN ZONE TARGET

Large broad gold geochemical anomaly, with multiple drill intersections

Significant hits in fresh rock include;

- 4m at 3.37g/t gold
- 3m at 3.30g/t gold
- 2m at 5.84g/t gold
- 2m at 3.40g/t gold
- 17m at 1.13g/t gold
- 7m at 1.14g/t gold

Previous RC drill line approx. 200m to the southeast intersected 14m at 2.84g/t gold, including 4m at 4.43g/t gold, with other lower grade intersections. These drill lines lie over a cluster of highly anomalous gold in auger geochemical anomalies, with mineralisation open in all directions.



2019 EXPLORATION PROGRAM

10,000M OF RC DRILLING PLANNED

PHASE 1 4700m - Completed

- 4,700m drilling targeted high-grade zones of NE and N trending anomalies
- Targeted nominal ~60-90m depth, heel to toe coverage

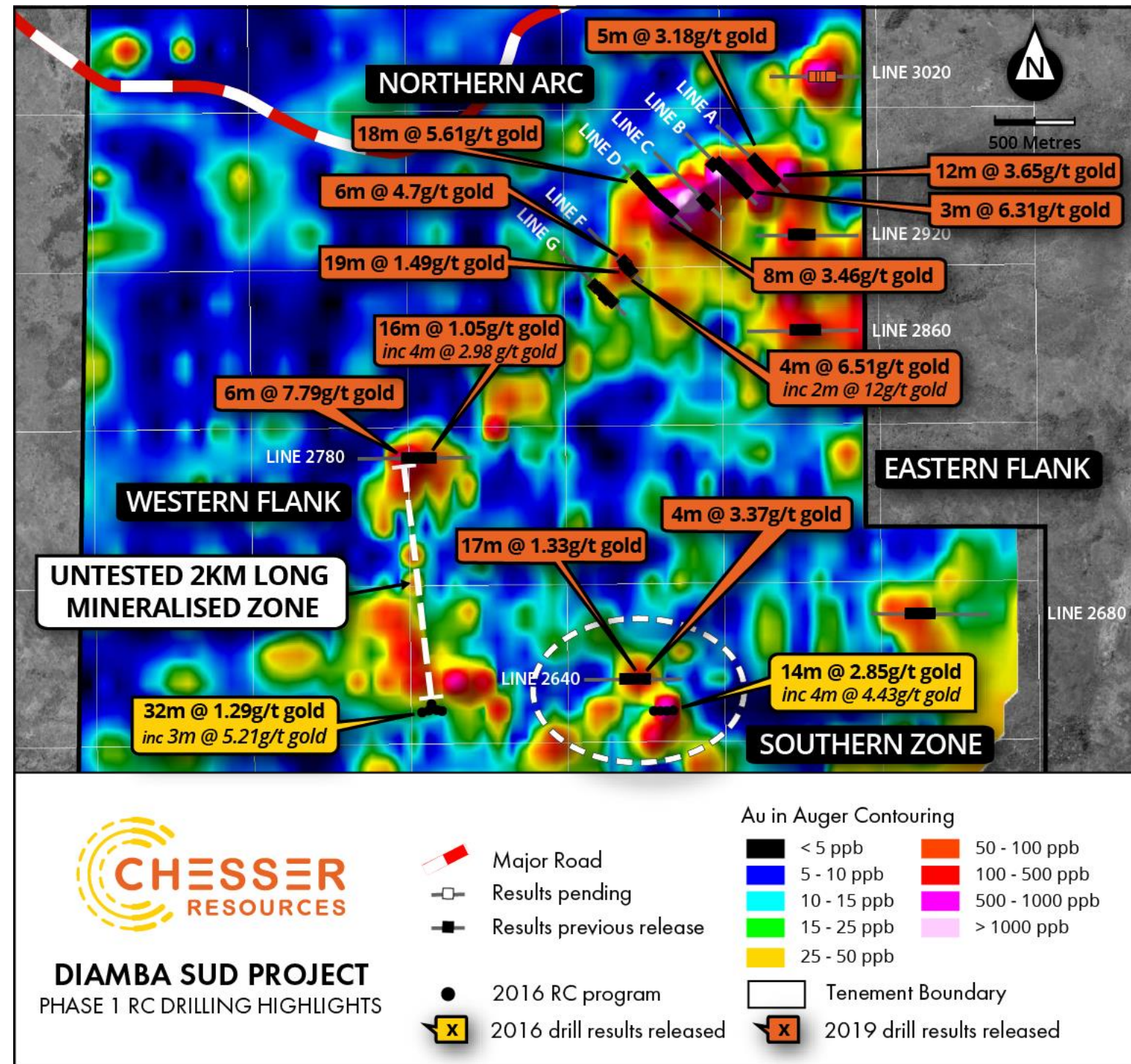
PHASE 2 – June/July

- Undertake an Induced Polarisation survey over priority target areas
- Follow up on mineralisation in Phase 1 program

RESULTS: PHASE 1

- **Three potential discoveries** – Northern Arc, Western Flank & Southern Zone

AUD1m Financing completed in May to fund Phase 2.



EXPLORING FOR GOLDEN ELEPHANTS

Underexplored Prolific Orogenic Gold Belt in West Africa hosting multimillion-ounce gold deposits

Three significant gold targets identified, providing follow-up drill targets for 2019 campaign (underway)

KEY FOCUS DIAMBA SUD Define and delineate high grade mineralisation from successful first pass Phase 1 drilling

Stable And Democratic Mining Friendly Country with opportunities to strategically acquire prospective landholdings





www.chesserresources.com.au

CONTACT

Mike Brown mikeb@chesserresources.com.au

APPENDIX:

Board and Management Bios

SIMON O'LOUGHLIN

Non-executive Chairman

Mr O'Loughlin is the founder of O'Loughlins Lawyers, an Adelaide based specialist commercial law firm. For many years he has practiced both in Sydney and Adelaide, in the corporate and commercial fields, with a particular focus on the resources sector. He is Non-executive Chairman of Oklo Resources. He is a Non-executive director of Bod Australia Limited and Petrathern Limited. In the last 3 years he has been a director of Kibaran Resources, Odin Mining, ARC Exploration, Piedmont Lithium & Oklo Resources.

MICHAEL BROWN

Managing Director & CEO

Mr Brown is a former CEO and qualified geologist with over 25 years' experience, having worked in exploration and mining in Australia, Indonesia, Chile and Argentina. He has held senior executive roles with Kinross Gold, Austral Gold and Argentex Mining. He has previously worked for Homestake, RioTinto and Phelps Dodge. Mr Brown was most recently a member of the executive team at Austral Gold (ASX: AGD), a junior producer. Prior to that, he was CEO of Argentex Mining, a TSX Listed precious metals explorer acquired by AGD. He was previously an executive director of Argentex Mining and non-executive director of Reservoir Capital.

SIMON TAYLOR

Non-executive Director

Mr Taylor is a geologist with over 25 years' experience throughout Australia and overseas having held Senior Geologist and Exploration Manager positions for numerous ASX listed resource companies. He is the Managing Director of Oklo Resources and Non-executive director of Bod Australia and ARC Exploration. In the last 3 years he has been a director of TW Holdings, King Solomons Mines & Aguia Resources.

STEPHEN KELLY

Executive Director, CFO & Company Secretary

Mr Kelly has been Company Secretary and Chief Financial Officer since 2012. He is a qualified Australian Chartered Accountant with more than 25 years' international experience in the areas of external and internal audit, risk management and compliance, treasury and corporate finance.

GARETH O'DONOVAN

Exploration Manager

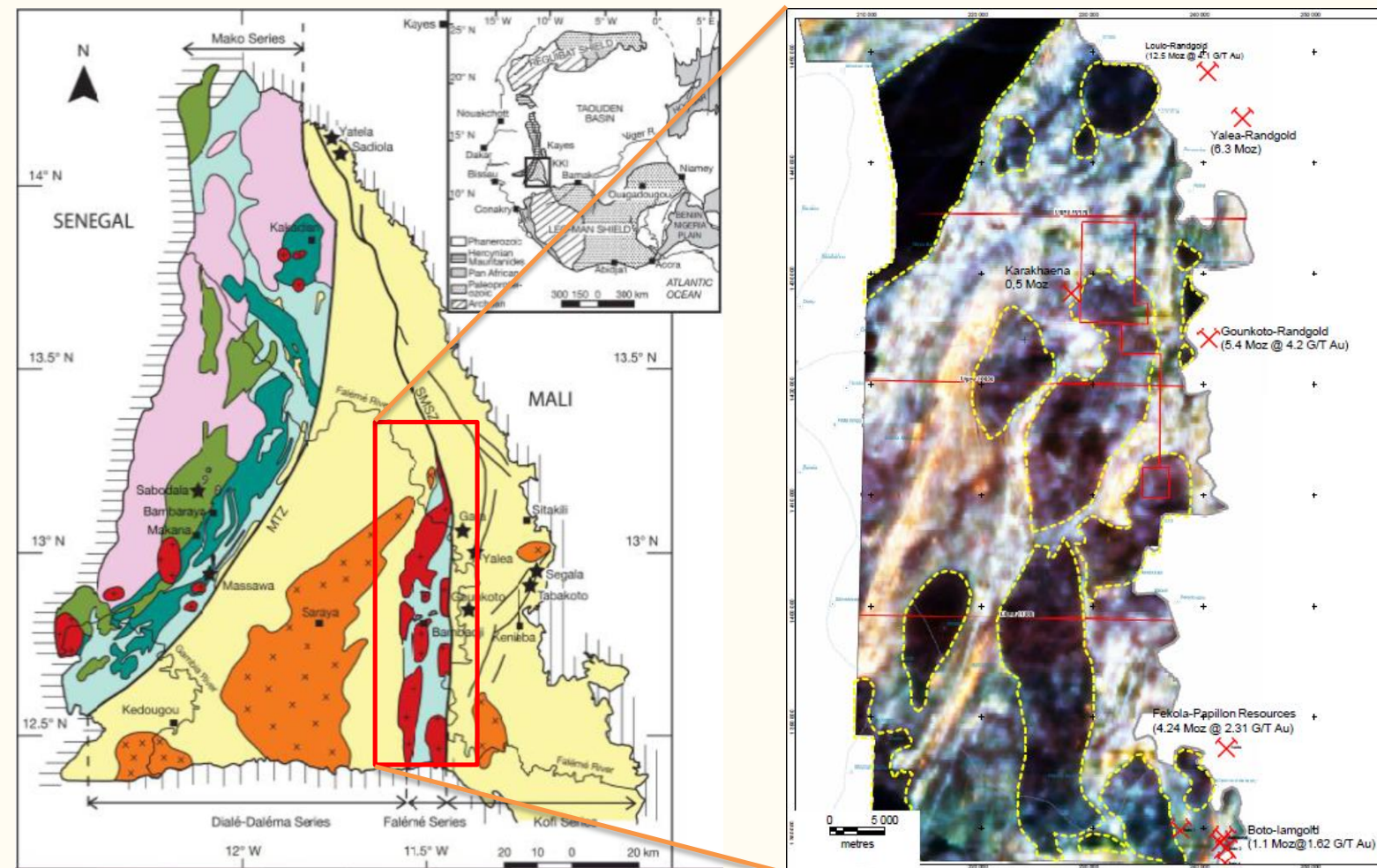
Mr O'Donovan has a wealth of experience in West Africa including direct experience in Senegal and regionally on the West African Birimian terranes and is a French speaker.

He joined SRK Consulting in 1997 and subsequently founded SRK's exploration consulting business in 2003. Mr O'Donovan was Managing Director of SRK Exploration until 2018 when he was appointed as Chairman. Prior to that he led exploration efforts for a number of junior explorers in West Africa following more than 10 years working in various regions in Africa (including Senegal) with Anglo American Gold.

APPENDIX:

Diamba Sud Geology

- Consists of a north-south suite of “Faleme” calc-alkaline volcanoclastics and metasedimentary units (lighter areas in EM)
- Intruded by calc-alkaline metaluminous granitoid bodies (darker areas in EM)
- Bounded to east by Senegal Mali Shear Zone (“SMSZ”) and to west by “Diale-Dalema” block, consisting of calc alkaline peraluminous granites and basin metasedimentary rocks
- Goukoto lies on eastern side of SMSZ, within the “Kofi series” of metasedimentary units, and proximal to the SMSZ (5km). Dominant structural controls associated with mineralisation are north and north east striking.



APPENDIX:

Western Flank: New Discovery of an open 2km structure

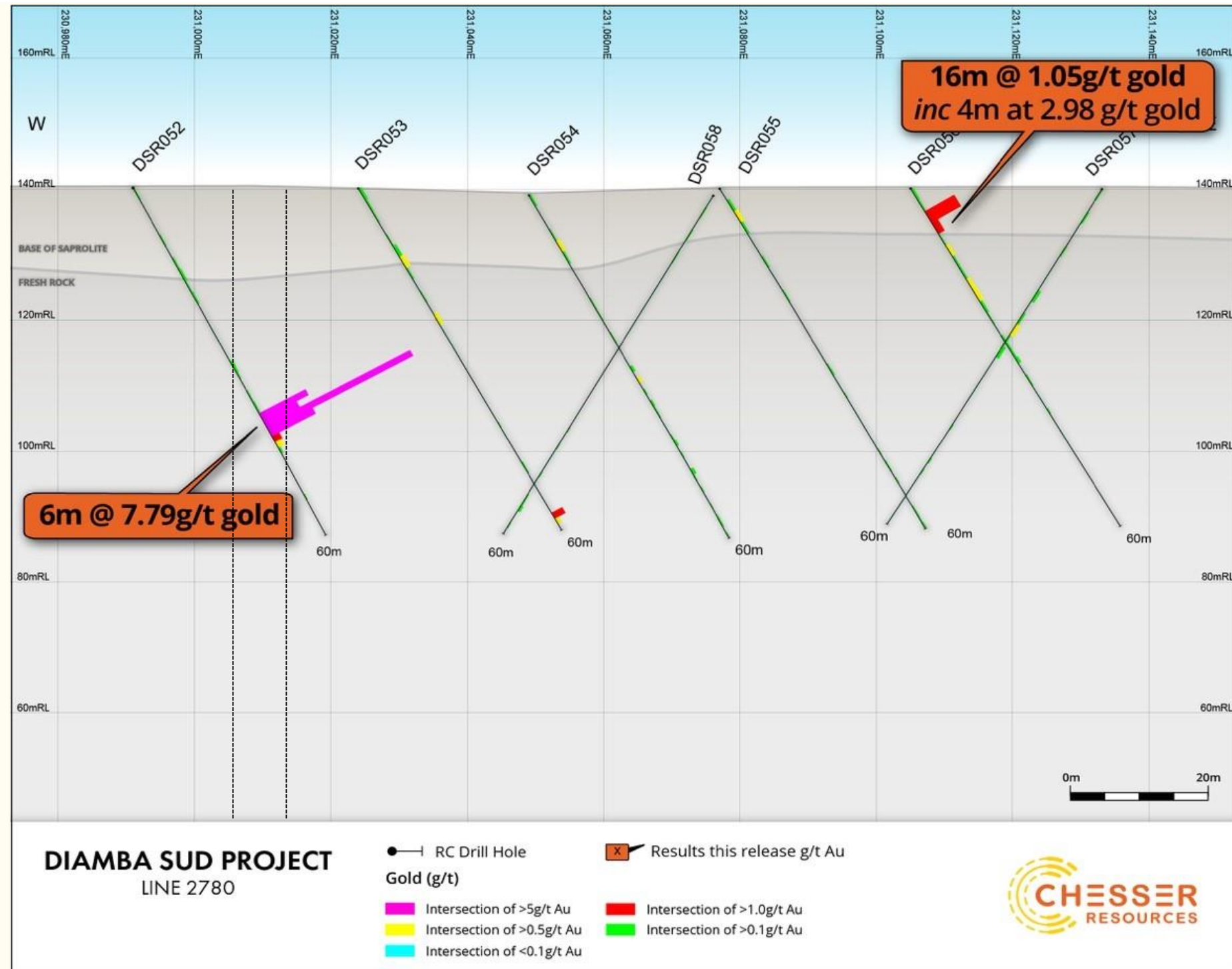
Hole 52 intersected a structural zone with high grade gold mineralisation.

Mineralised zone is brecciated with up to 5% pyrite.

This structure is generally parallel to aeromagnetic linear feature that strikes NNW, and is interpreted to be a splay structure off the SMSZ.

The intersection is along trend from intersection in RC drilling 2km to the SSW; 32m @ 1.29 g/t gold, including 3m @ 5.21g/t gold

DSR056 intersected a zone of good grade in oxide, with an extensive lower grade intersection of 12m at ~1 g/t in fresh rock beneath this.



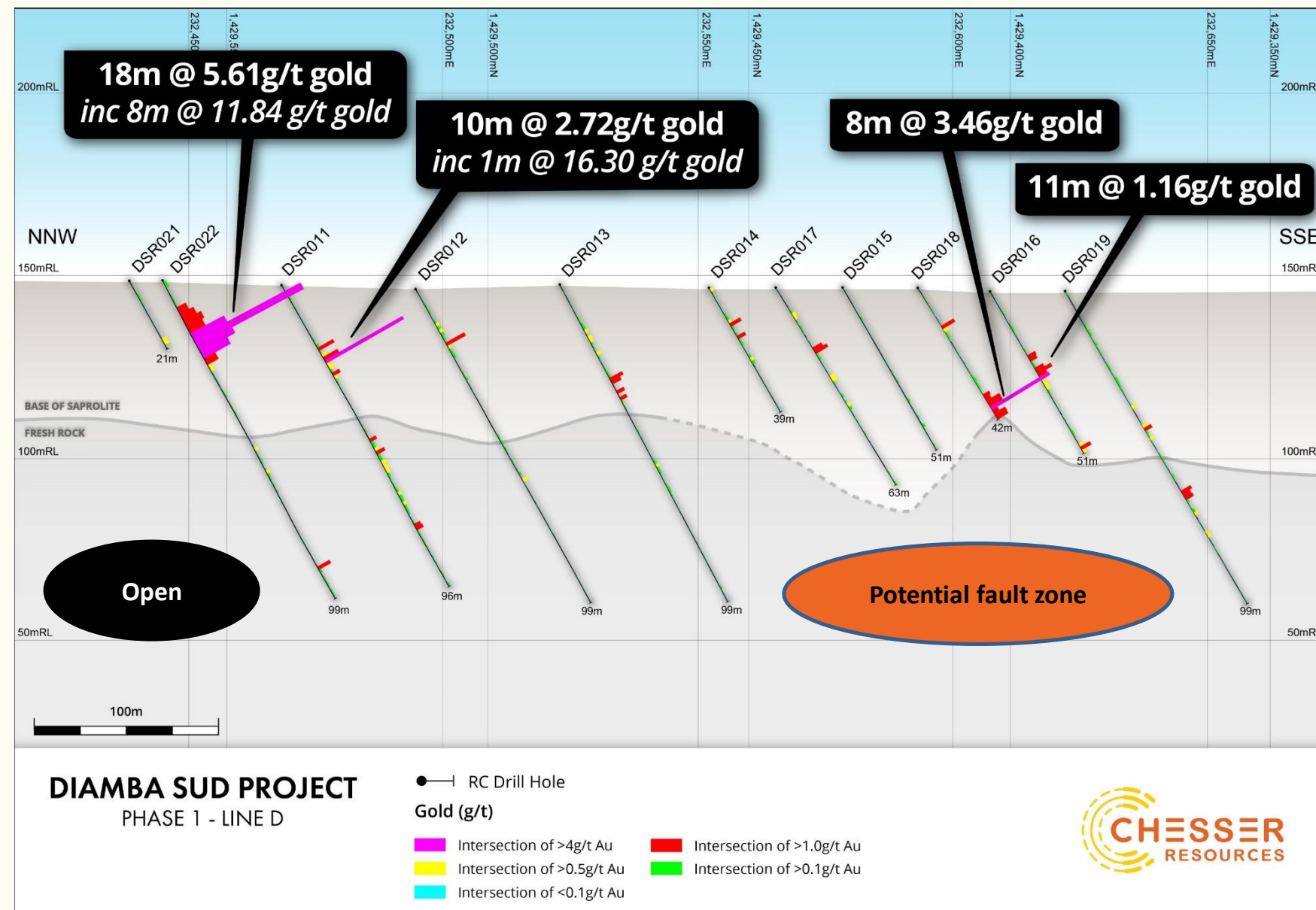
APPENDIX:

Line D: Multiple oxide intersects

Drilling completed on a SE azimuth to test apparent NE trend of the Northern Arc target and possible northerly trending structures.

Majority of holes hit mineralisation in oxide, with significant hits on the start of the line (NW);

- 18m @ 5.61g/t gold
inc 8m @ 11.84 g/t gold
- **Remains open in all directions,** with Hole DSR021 being abandoned due to bad ground
- Mineralisation in fresh rock was encountered in hole 18, but hole was abandoned due to excess water
- Narrow high grade intersections within broader lower grade zones of sulphide mineralisation
- Holes 14-18 terminated early. This may be result of proximity to a significant structure



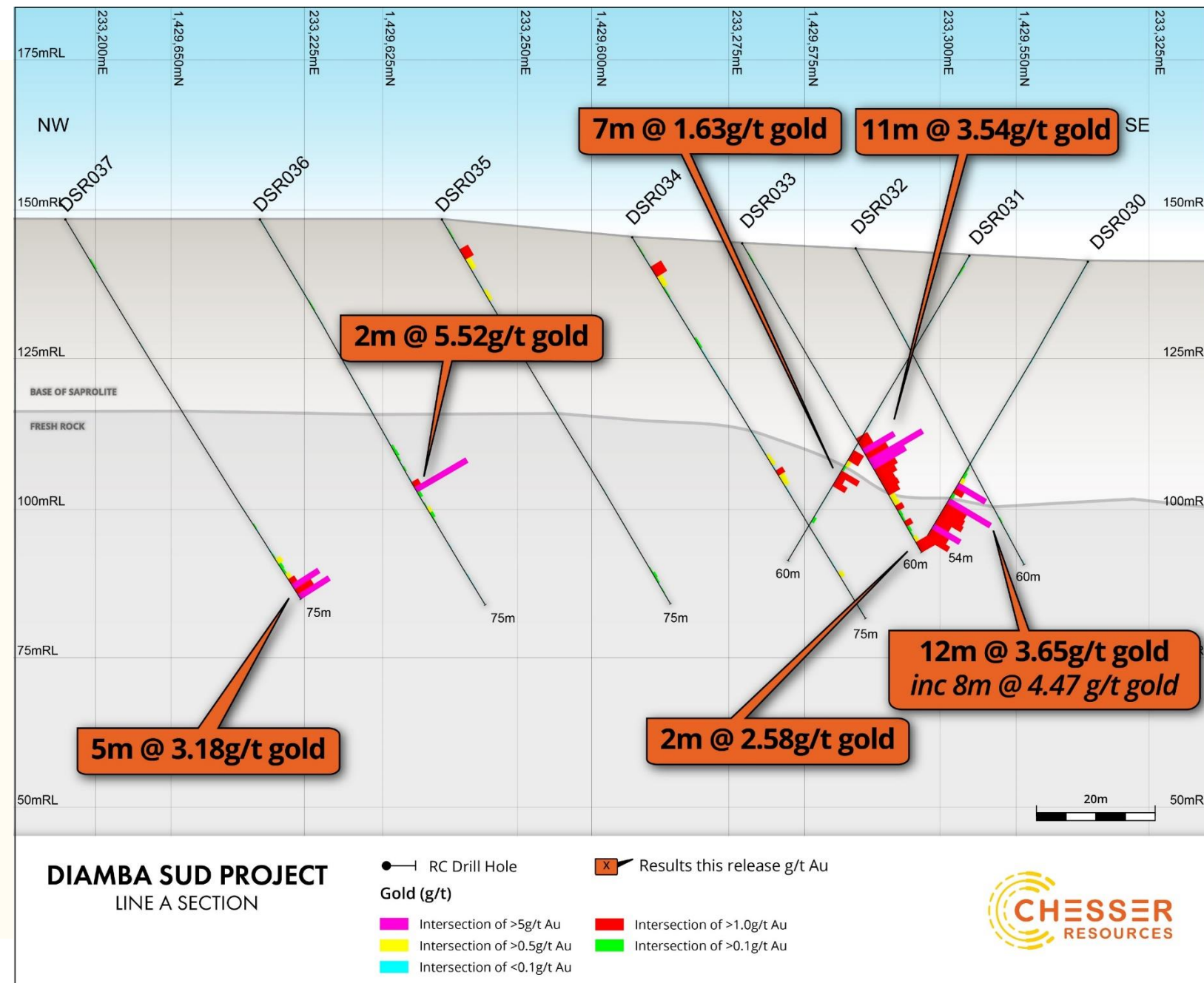
APPENDIX:

Line A: Fresh rock intercepts

Crossed the highest gold returned from auger drilling (21g/t gold).

Drilling was scissored to assist with interpretation of any mineralisation.

- 6 of 8 holes encountered mineralisation in fresh rock. The best intercept was:
 - **12m @ 3.65g/t gold**, including **8m @ 4.47g/t gold**
- Lack of mineralisation in oxide is noteworthy
- Both holes that encountered mineralisation in fresh rock at the SE end of Line A ended short due to excess water (proximity to structure?)

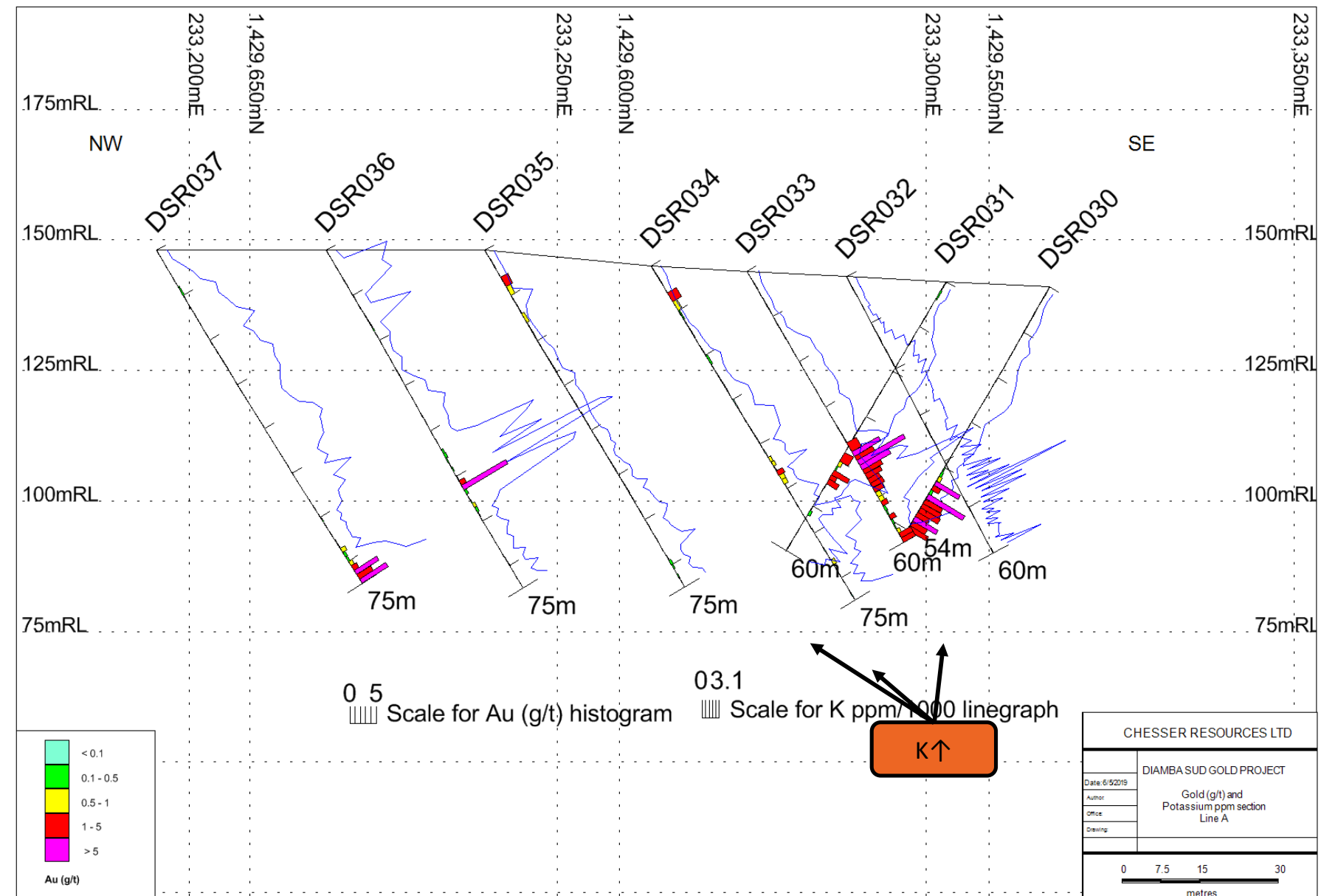


APPENDIX:

Alteration - *Indicative of a Plumbing system in Northern Arc area*

Drilling has demonstrated there is a strong correlation with potassium (K) (albite alteration) with gold mineralisation

- Potassic alteration (or albitization) is strongly associated with mineralisation on most of the SMSZ deposits; Goukoto, Yalea (Yalea and Gara deposits form the Loulo mine), and Fekola (all in Mali)
- K plots on sections of line A and B mark this strong correlation
- Increase in K in holes observed in the fault zone where water \pm clay caused early termination of hole

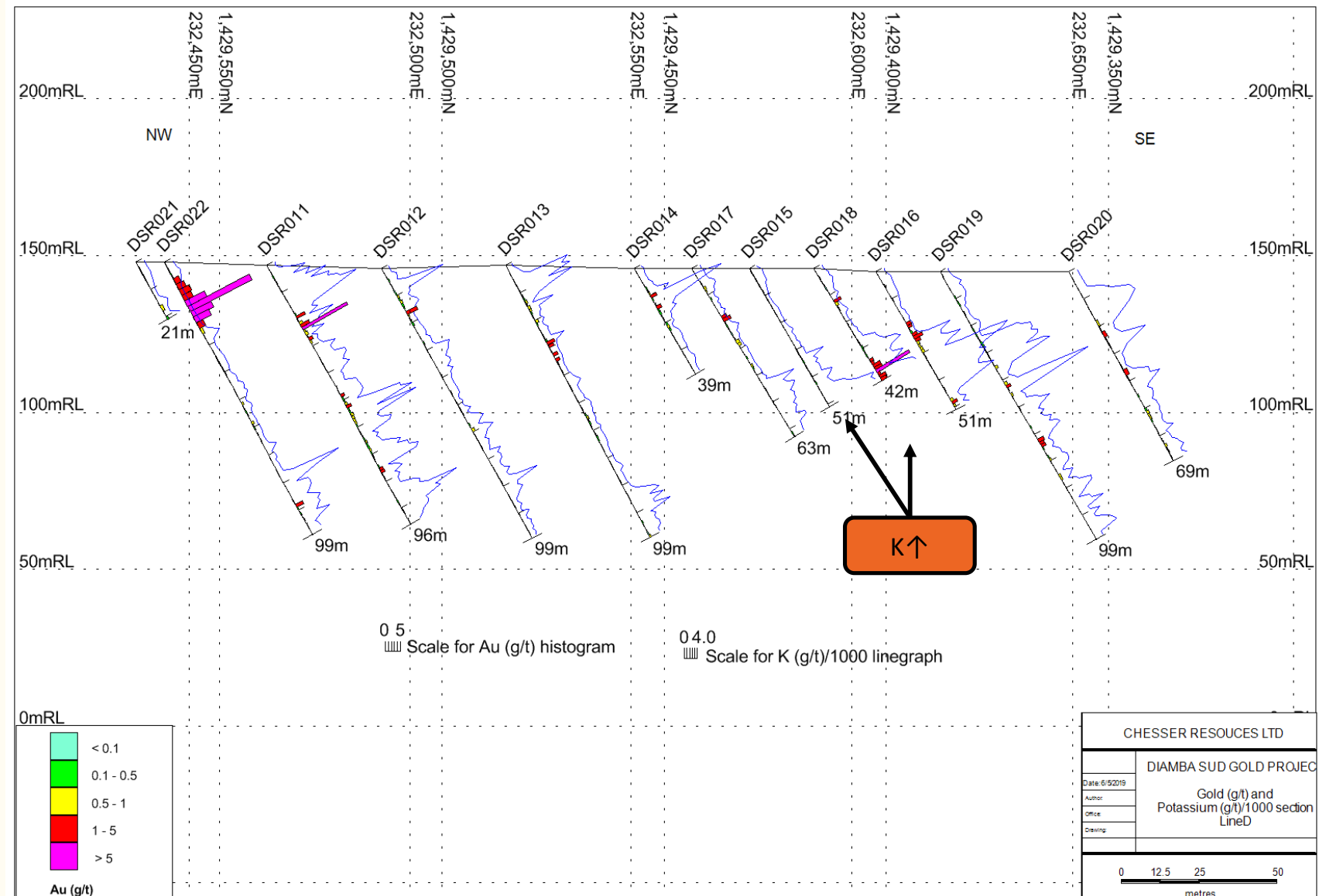


APPENDIX:

Alteration - *Indicative of a Plumbing system in Northern Arc area*

Drilling has demonstrated there is a strong correlation with potassium (K) (albite alteration) with gold mineralisation

- Potassic alteration (or albitization) is shown to be strongly associated with mineralisation in fresh rock intersections, with a more variable correlation in oxide
- Increase in K in holes observed in the fault zone where water ± clay caused early termination of hole
- Observance of K alteration with mineralisation may be indicative of a large plumbing system



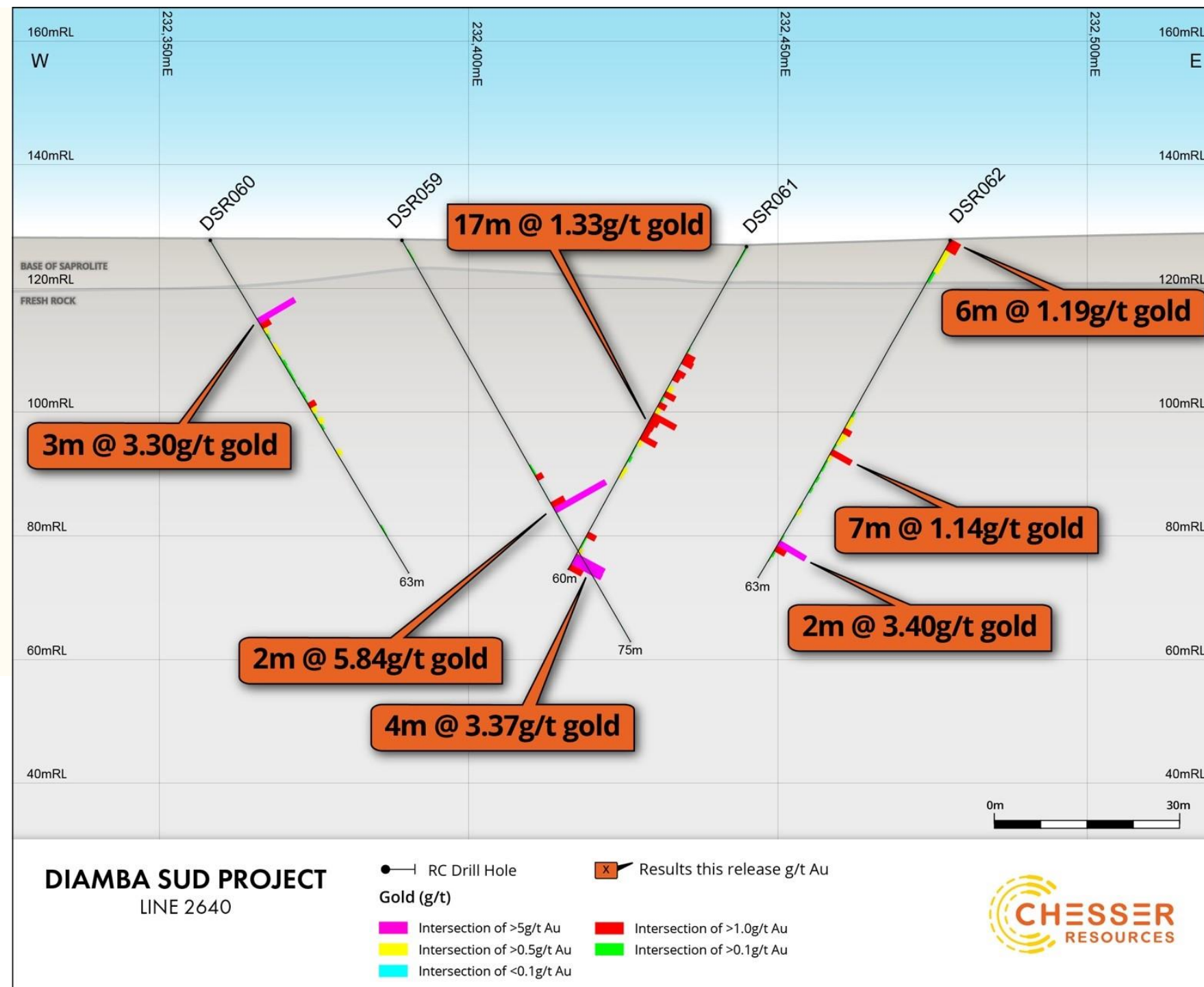
APPENDIX: SOUTHERN ZONE

Multiple medium to high grade shallow intersections across apparently northerly striking structures.

Most of intersections are fresh rock.

Drilling traverse was drilled approximately 200m to northwest of RC drilling done in 2016., which included **14m at 2.85g/t gold, incl. 4m at 4.43 g/t gold.**

Drilling is located within a 1km² gold in auger geochemical anomaly.





www.chesserresources.com.au

CONTACT

Mike Brown mikeb@chesserresources.com.au

Stephen Kelly stephenk@chesserresources.com.au