

ACTIVITIES REPORT

QUARTER ENDED 30 JUNE 2019

ActivEX Limited (ASX: AIV) ("ActivEX" or "the Company") provides the following summary of activities undertaken during the quarter ended 30 June 2019.

Summary and Highlights

- Field exploration program completed at Gilberton Gold Project, assay results to be announced when received.
- Project partnering opportunities continued with third parties through provision of data for review and assessment.
- Completion of a Loan Facility Agreement with Star Diamond Developments Limited ("Lender"). Pursuant to the Loan Facility, the Lender will provide up to \$2M in standby funding under which ActivEX can draw down as required, to fund its exploration activities, repay existing loan facilities and for general working capital.

ASX Code: AIV

Issued Capital

177,228,401 ordinary shares (AIV)

Market Capitalisation

\$33.67M (30 July 2019, \$0.19)

Directors

Min Yang (Chairman, NED)

Mark Derriman (Executive Director)

Geoff Baker (NED)

Dongmei Ye (NED)

Craig McPherson (Company Secretary)

About ActivEX

ActivEX Limited is a minerals exploration company committed to the acquisition, identification, and delineation of new resource projects through active exploration.

The ActivEX portfolio is focussed on copper and gold projects, with substantial tenement packages in the north and southeast Queensland and in the Cloncurry district of northwest Queensland.

The Company also has an advanced potash project in Western Australia where it is investigating optimal leaching methods for extraction and production of potash and by-products.

Suite 2, 3B Macquarie Street
Sydney, NSW 2000

admin@activex.com.au
www.activex.com.au

Phone +61 (02) 9251 9088

ABN 11 113 452 896

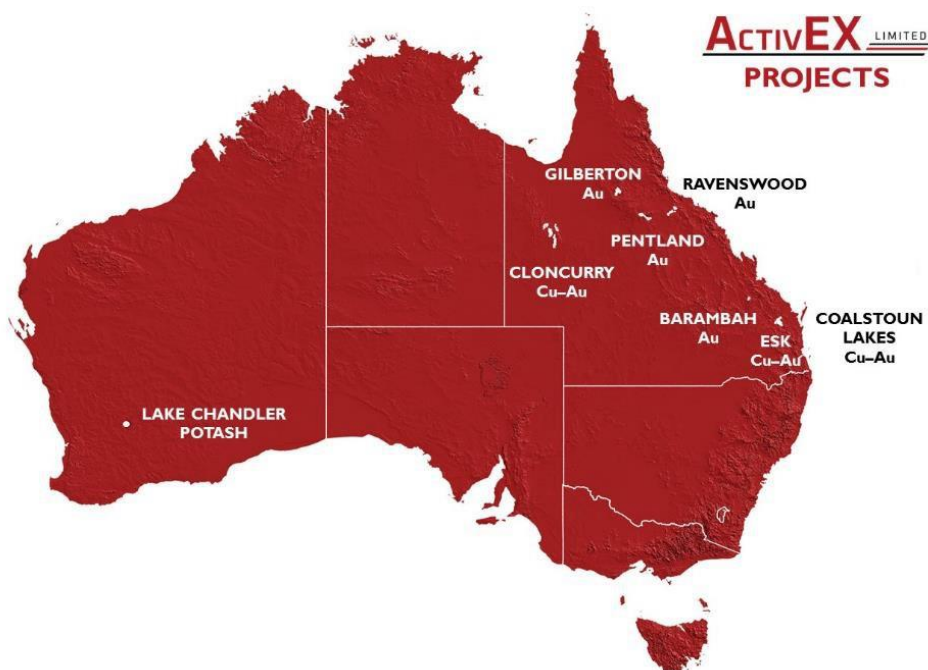


Figure 1. ActivEX Limited Projects and tenements.

OVERVIEW

Field Exploration Activities

ActivEX Limited ('ActivEX' or the 'Company') is pleased to announce that during the quarter it commenced field-based exploration activities at the Gilberton Gold Project focusing on rock chip sampling in Mt Hogan open pit and areas of other known mineral occurrences and workings.

The Company's JV partner, Au NQ Gold Pty (Au NQ Gold), commenced a detailed field appraisal of several high priority targets previously delineated during the regional phase of exploration over five (5) key gold-copper tenements located 60km south of Cloncurry in Northwest Queensland. Exploration is ongoing and work is continuing towards delineation of drill targets.

ActivEX's Queensland tenement holding remains substantial and comprises a total of 29 granted EPMs, for a total of 649 sub-blocks and encompasses an area of 1,959km² (Figure 1 & 2). ActivEX Limited holds a 100% interest in all of the tenements.

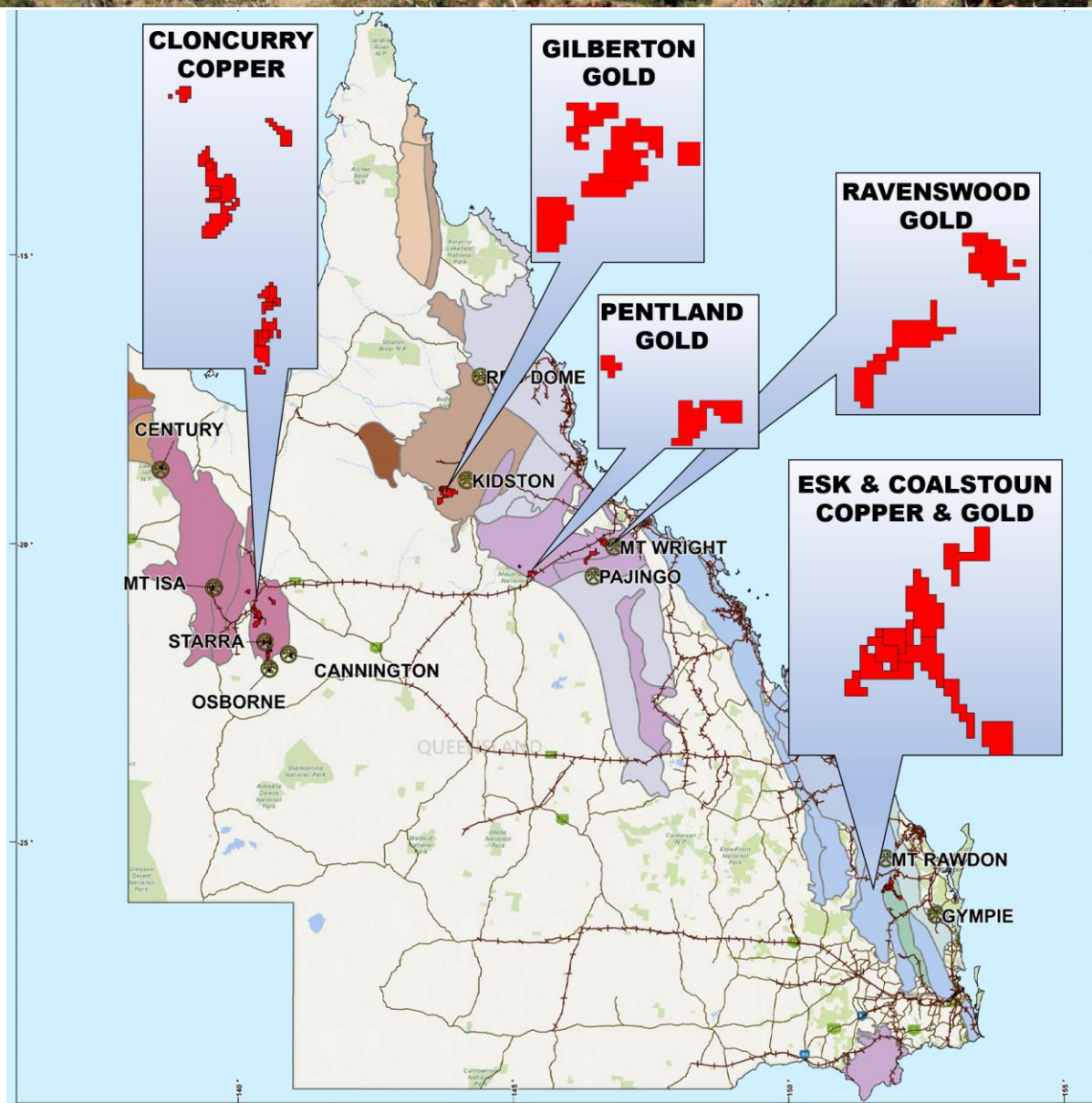
CORPORATE

During the quarter the Company continued to advance project partnering opportunities through the provision of data to third parties for their review and assessment. The Company will update the market should any agreement be finalised.

FINANCIAL

As at 30 June 2019, the Company had approximately \$19,000 in cash and has access to an undrawn facility of \$580,000, pursuant to the \$2 million loan facility agreement entered into with ASF Group Limited.

Subsequent to the end of the quarter, the Company announced that it has entered into a loan facility agreement with Star Diamond Developments Limited ("Star Diamond") pursuant to which Star Diamond will provide up to \$2 million standby facility to fund its exploration activities, repay existing loan facilities and for general working capital.



ActivEX LIMITED

Legend

- Town
- Road
- Railway

Tectonic Province

- Savannah / Iron Range Province
- Murphy / Western / Kalkadoon-Ewen / Eastern Province
- Hogkinson / Broken River / Clarke River Province
- Etheridge Province
- Croydon Province
- Cape River / Anakie / Thalanga Province
- New England Orogen

ACTIVEX QUEENSLAND TENEMENTS



Figure 2. ActivEX Limited Queensland Projects and tenements.

OPERATIONS

During the quarter, field-based exploration activities continued at the Cloncurry Copper and Gold Project focusing on a detailed ground based geophysical evaluation of several targets in the Cloncurry JV area by Au NQ Gold. Further exploration activities including geological and structural mapping,; focussed rock chip sampling and ground geophysical surveys by Au NQ Gold will continue with the aim being to delineate drill targets for testing in the 2019 field season. In addition, the company will be looking to grow the current resource base through a combination of internal and external funding initiatives which include potential joint ventures.

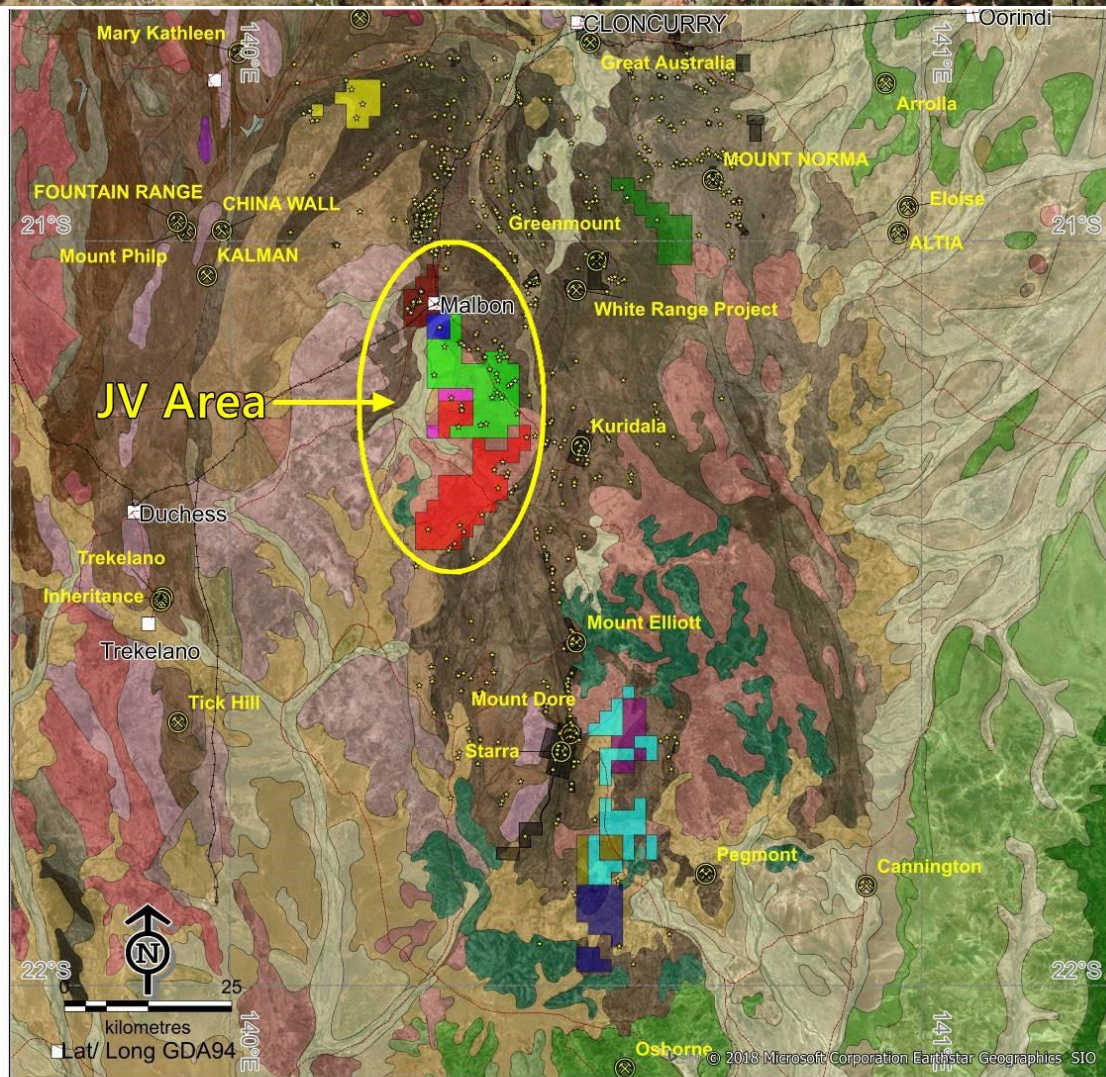
CLONCURRY COPPER AND GOLD PROJECT – Northwest Queensland

(EPMs 14955, 15285, 17313, 17805, 18053, 18073, 18511, 18852, 25192, 25454 and 25455 – ActivEX 100%)

The Cloncurry Copper and Gold Project is situated in northeast Queensland, approximately 60km south of Cloncurry (Figure 2 & 3). The Project consists of EPMs 14955, 15285, 17313, 17805, 18053, 18073, 18511, 18852, 25192, 25454 and 25455, which comprise a total of 222 sub-blocks and encompasses an area of 710km². ActivEX Limited holds 100% interest in all the tenements.

The Project is situated within the Eastern Succession of the Mount Isa Inlier, which is a highly prospective geological terrane containing numerous major deposits (Figure 3). These include Iron Oxide Copper Gold, skarn style Cu-Au, and Merlin-style Mo deposits.

Field-based exploration activities are continuing in the Cloncurry Copper and Gold Project focusing on detailed geophysical surveys, rock chip sampling and geological mapping (Figure 4) with the aim to delineate drilling targets.



ActivEX LIMITED

ActivEX Tenement

■	Mt Agate EPM 14955
■	Florence Creek EPM 15285
■	Malbon EPM 17313
■	Florence Flat EPM 17805
■	Bulonga EPM 18053
■	Selwyn East EPM 18073
■	Brightlands EPM 18511
■	Robour EPM 18852
■	Concorde EPM 25192
■	Heathrow EPM 25454
■	North Camel Dan EPM 25455

- Town
- Railway
- Road
- Major deposit
- ★ Mineral occurrence/ working
- Mining Lease (NOT AIV)

Geology

	QUATERNARY ALLUVIUM
	TERTIARY SEDIMENTARY ROCK
	EARLY CRETACEOUS MUDROCK
	LATE JURASSIC - EARLY CRETACEOUS ARENITE
	LATE CAMBRIAN - EARLY ORDOVICIAN MIXED SILICICLASTIC/CARBONATE ROCKS
	MESOPROTEROZOIC GRANITOID
	PALEOPROTEROZOIC MIXED METAMORPHOSED FELSITES & SEDIMENTARY ROCKS

CLONCURRY PROJECT

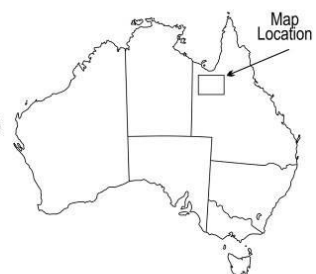


Figure 3. ActivEX Limited Cloncurry Copper and Gold Project regional geology, tenements and prospects.

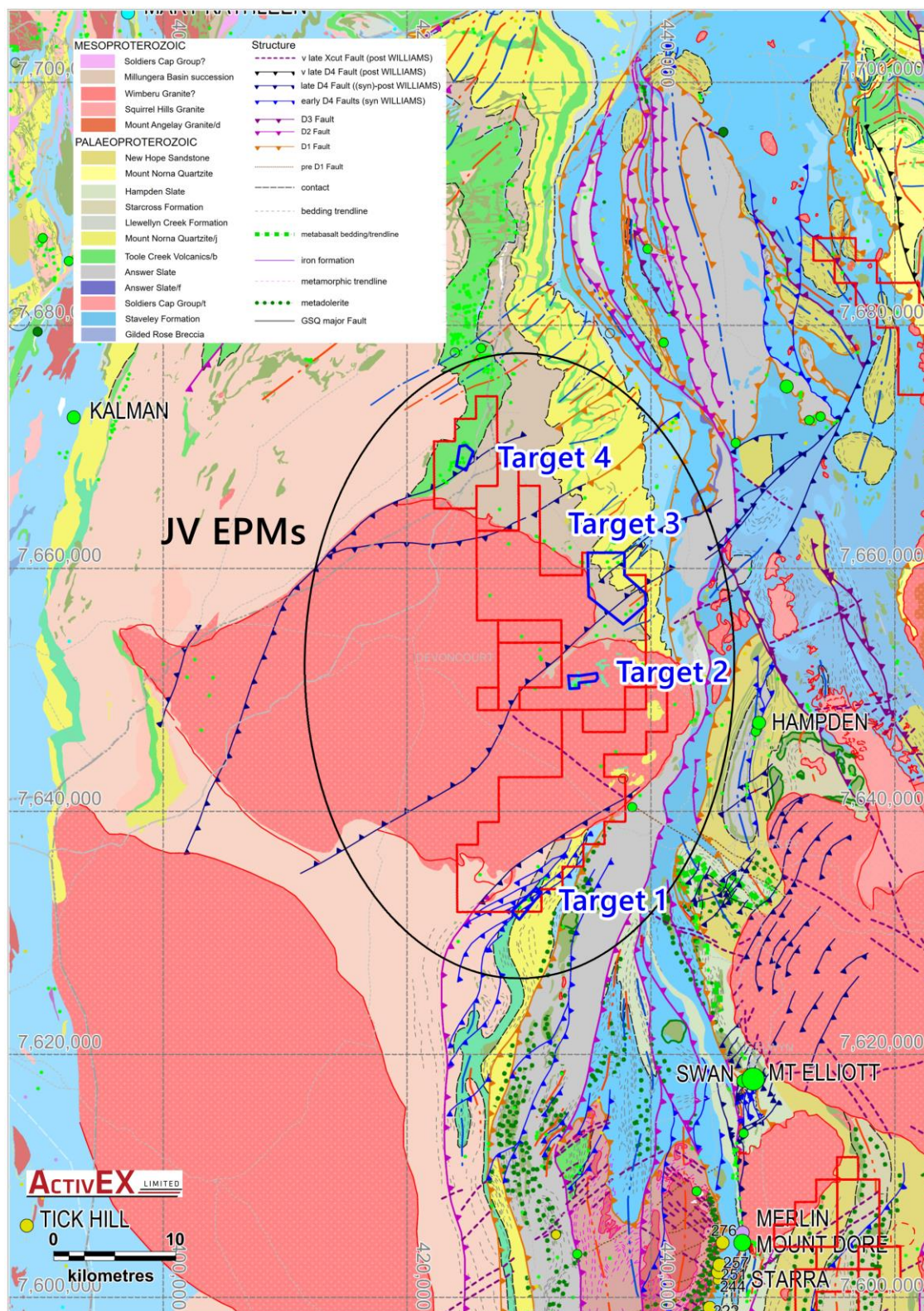


Figure 4. Cloncurry Project JV EPMs and selected targets on regional geology.

BARAMBAH GOLD PROJECT – Southeast Queensland**(EPMs 14937 and 18732 – ActivEX 100%)**

The Barambah Gold Project is located in south-east Queensland between the towns of Gayndah and Goomeri, 215 kilometres due north-west of Brisbane (Figure 2 & 5). The project tenure comprises EPMs 14937(Barambah) and 18732 (One Mile) for a total of 25 sub-blocks and encompass an area of 77 km² (Figure 5).

The Barambah deposit consists of several gold and silver mineralised veins hosted by the Aranbanga Volcanic Group which consist of a number of polymictic to monomictic pyroclastic breccias, rhyolitic lapilli-ash tuff and rhyolitic airfall lapilli-ash tuff and lesser intrusive andesite (Figure 5 & 6). The veins are cut by quartz-feldspar phyric rhyolitic dykes, particularly to the north of historic mining. Field observations, age relationships and regional geological dating, suggest an approximate age of $\sim 220 \pm 5$ Ma for the deposit.

To date drill testing has been confined along strike of the Barambah open pit with the delineation of a maiden JORC Resource by the Company in 2015. The Aranbanga Volcanic Group is host to numerous auriferous epithermal quartz vein systems and deeper CSAMT targets along the main Barambah trend which to date remain partially tested by drilling. The Company is reviewing funding options for a drill focussed exploration program to grow the current gold resource base at the Barambah Gold Project.

ESK COPPER AND GOLD PROJECT – Southeast Queensland**(EPMs 14476, 14979, 16265 and 16327 – ActivEX 100%)**

The Esk Copper and Gold Project consists of tenements 14476 (One Mile), 14979 (Dadamarine), 16265 (Blairmore), 16327 (Ban Ban), which comprises a total 53 sub-blocks and encompass an area of 164 km² (Figure 2 & 5). ActivEX Limited holds 100% interest in all tenements. The Project is located in the New England Orogen in southeast Queensland between the towns of Gayndah and Goomeri, 215 km due northwest of Brisbane (Figure 2). The prospects are situated at the intersection of the NNW trending Perry Fault zone (host to Mt Rawdon +2Moz gold deposit) and NE trending (Darling Lineament related) structures.

The Esk Copper and Gold project is host to mineralisation with similarities to many High-K Calcalkalic to Alkalic Porphyry copper-gold deposits, near surface supergene copper deposits, as well as potential for breccia-pipe hosted gold-copper deposits.

COALSTOUN LAKES COPPER AND GOLD PROJECT – Southeast Queensland**(EPM 14079 – ActivEX 100%)**

The Coalstoun Lakes Copper and Gold Project consists of tenement EPM 14079, which comprises 50 sub-blocks and encompass an area of 160 km² (Figure 1). The Project is located in the New England Orogen in southeast Queensland between the towns of Gayndah and Goomeri, 215 km due northwest of Brisbane (Figure 2 & 5). ActivEX Limited holds 100% interest in the tenement. The Coalstoun Lakes Copper and Gold Project is situated at the intersection of the NNW trending Perry Fault zone (host to Mt Rawdon +2Moz gold deposit) and NE trending (Darling Lineament related) structures.

The Coalstoun Lakes Copper and Gold Project is host to mineralisation with similarities to many High-K Calc-alkalic to Alkalic Porphyry copper-gold deposits, near surface supergene copper deposits, as well as potential for breccia-pipe hosted gold-copper deposits.

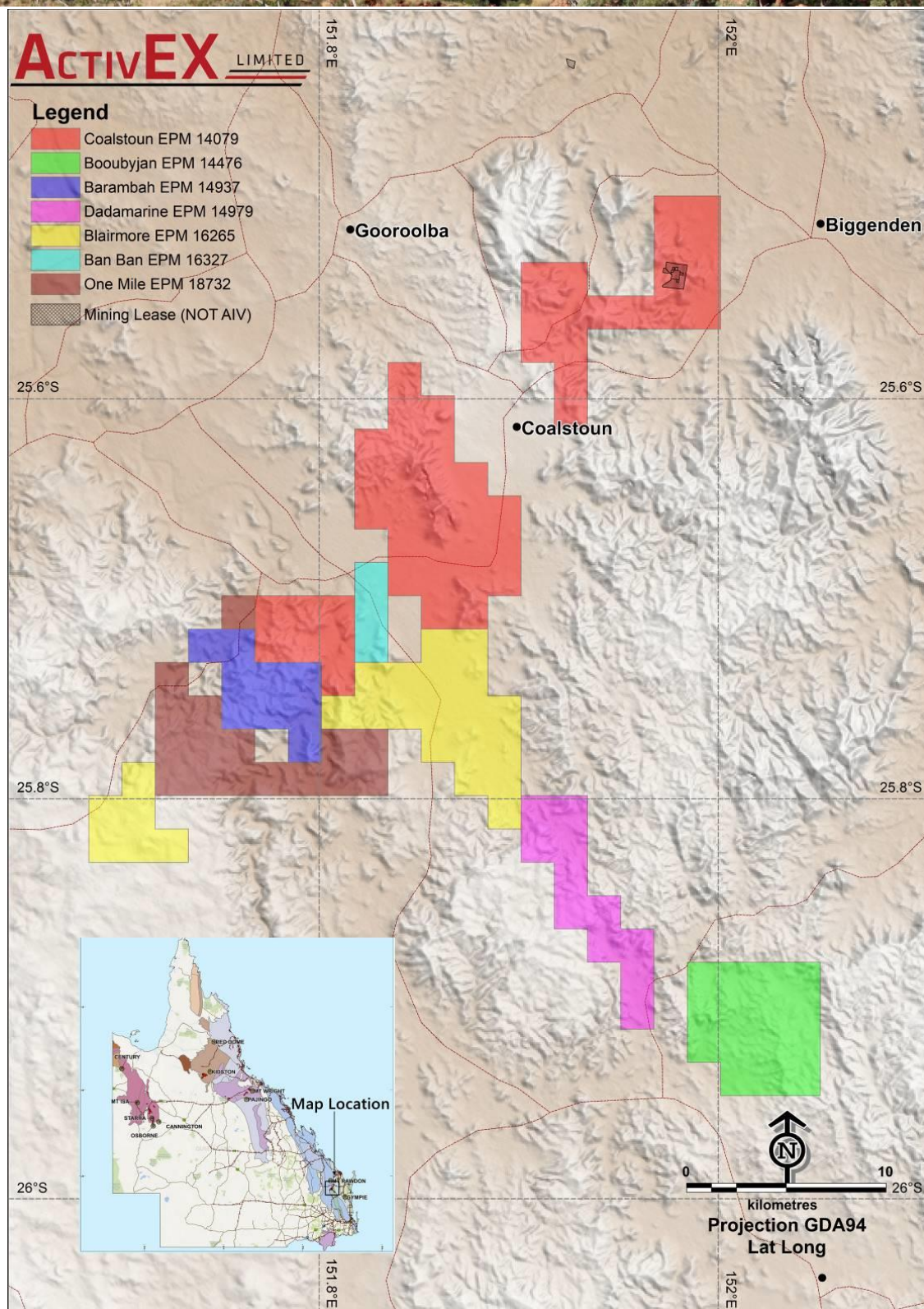


Figure 5. ActivEX Limited South-east Queensland Projects and Tenements location.

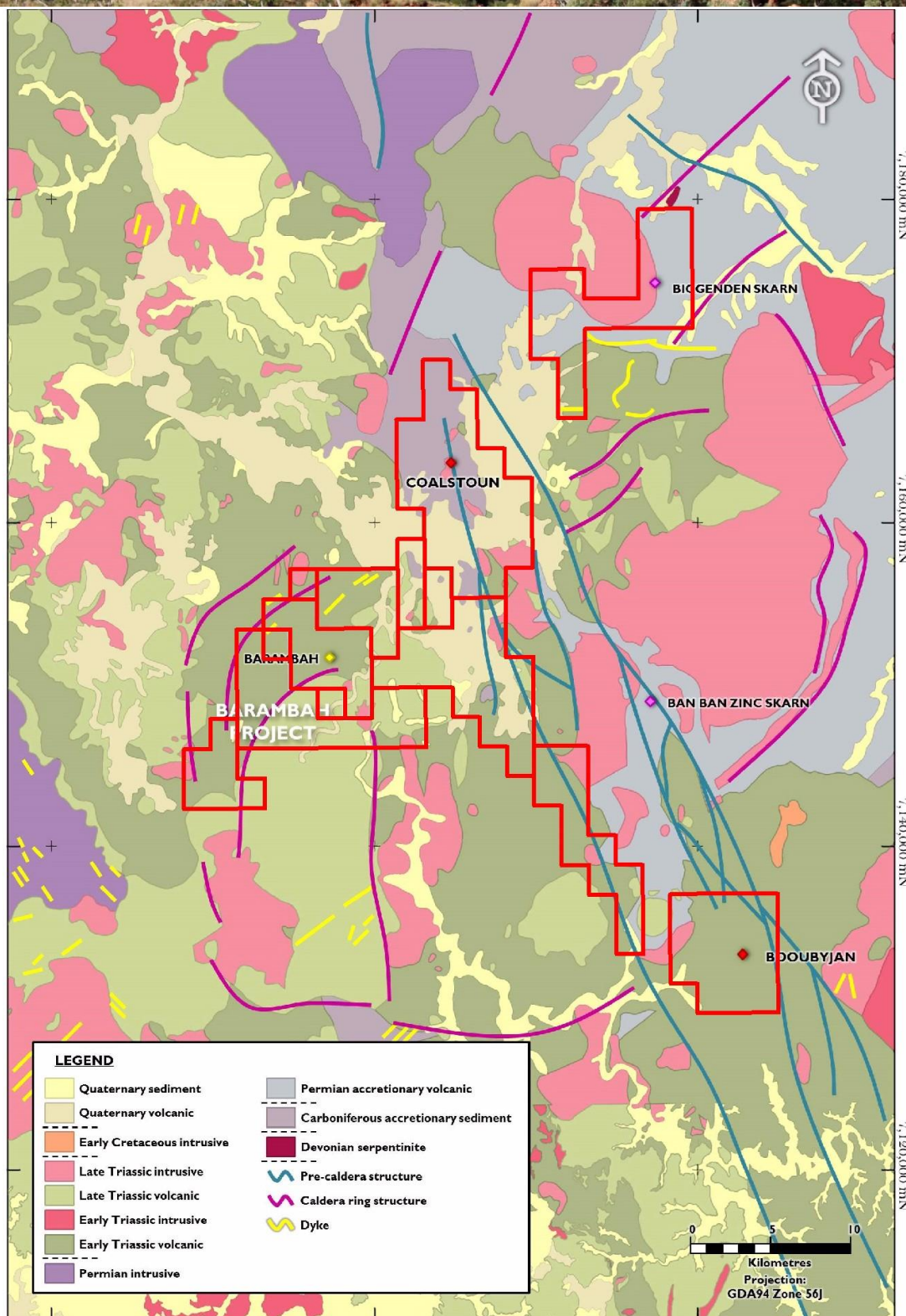


Figure 6. ActivEX Limited South-east Queensland Projects and Tenements regional geology.

RAVENSWOOD GOLD PROJECT – North Queensland**(EPMs 18424, 18426, 18637, 25466 and 25467 – ActivEX 100%)**

The Ravenswood Gold Project is situated in the Charters Towers Province in northeast Queensland, approximately 60km south of Charters Towers (Figure 2 & 7). The Project consists of EPMs 18424, 18637, 18426, 25466 and 25467, which comprise a total of 104 sub-blocks and encompass an area of 335km². ActivEX Limited holds 100% interest in all the tenements (Figure 7).

The Project is located in the highly prospective Charters Towers – Ravenswood region which has produced over 12Moz of Au including 6.6Moz at Charters Towers, 3.5Moz at Mount Leyshon as well as 1Moz at Mount Wright Au in addition the current nearby Ravenswood mining operation with a global resource of 4.3Moz. Mineralisation styles in the district include mesothermal gold veins (e.g. Charters Towers and Ravenswood Goldfields), breccia hosted gold (e.g. Mount Leyshon, Welcome Breccia) and epithermal gold veins (e.g. the Pajingo group).

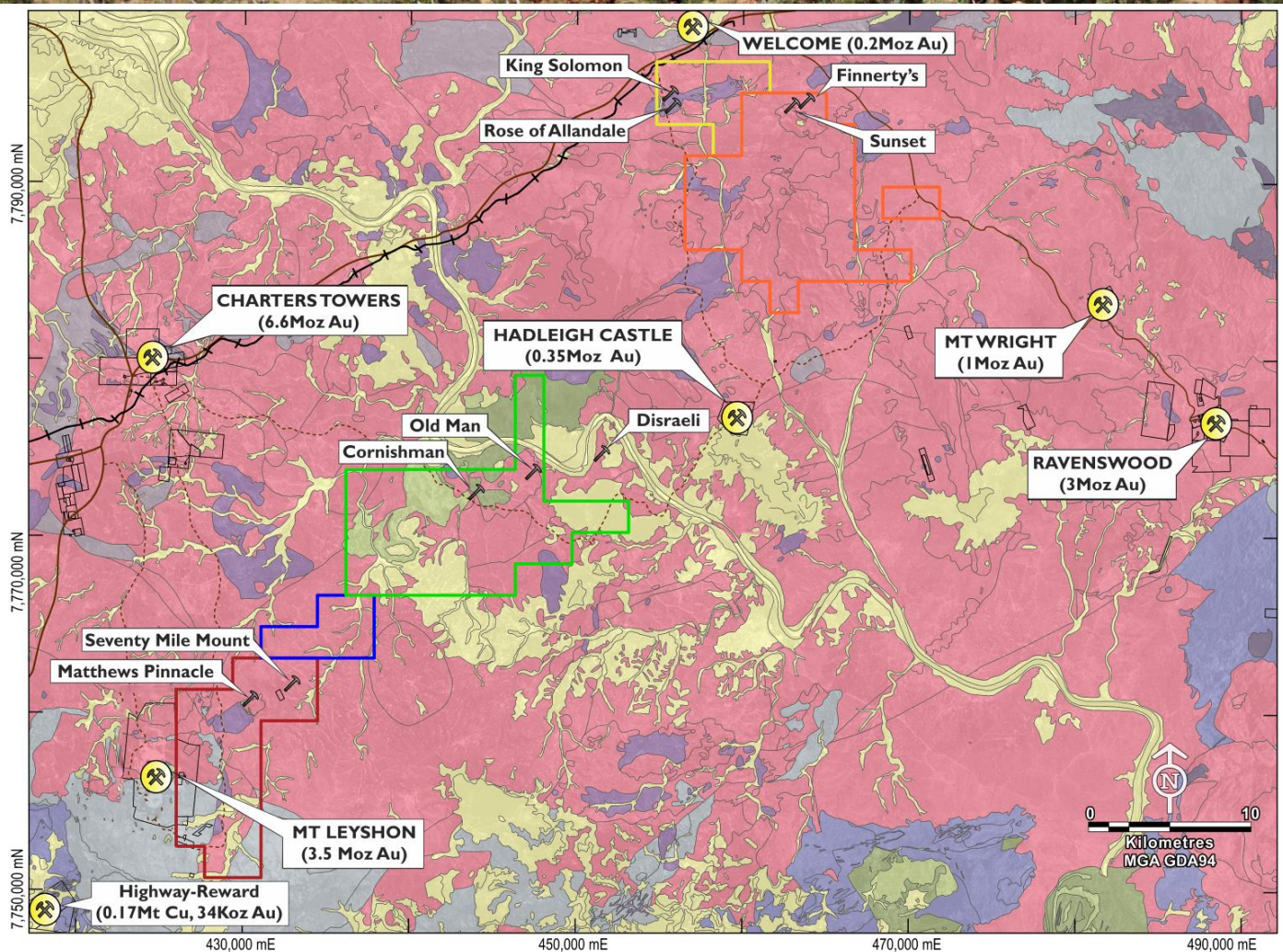
GILBERTON GOLD PROJECT – North Queensland**(EPMs 18615, 18623, 19207, 26232 and 26307 – ActivEX 100%)**

The Gilberton Gold Project is situated in the Georgetown Province in northeast Queensland, approximately 300km west-northwest of Townsville (Figure 2 & 8). The Project is in an area which is prospective for several metals (Au, Ag, Cu, Ta-Nb, Co) and a wide range of deposit styles (plutonic IRGS, porphyry breccia, and epizonal / epithermal IRGS). The world-class Kidston breccia hosted Au-Ag deposit occurs in similar geological terrain approximately 50km to the northeast. The Project consists of EPMs 18615 (Mt Hogan), 18623 (Gilberton), 19207 (Percy River), 26232 (Gum Flat) and 26307 (Split Rock). The Project comprises a total of 156 sub-blocks and encompasses an area of 508km² (Figure 9). ActivEX Limited holds 100% interest in all the tenements.

During the quarter field-based exploration activities commenced at the Gilberton Gold Project focusing on rock chip sampling in Mt Hogan open pit and other known mineral occurrences and workings (Figure 9 & 10).

Mt Hogan was the largest gold producer within the project area. Records of historic production date back to 1876-1877, when 2,256t of ore were crushed at the Mt Hogan battery and 106.9kg of bullion were produced. Most of this ore was probably from scattered workings scattered over the Mt Hogan hill. Mining recommenced in 1885 until 1910, and 341.22kg of bullion were produced from 7,016.8t of ore (average grade 48.6g/t Au). Most old workings at Mt Hogan are generally shallow, less than 10m deep, except for the Independence lode that occurs north from Mt Hogan mine, which was worked to about 40m inclined depth in the main shaft.

Field work is in progress and results will be reported to the market when received.



ActivEX LIMITED

Legend

- Mt Leyshon EPM 18424
- Cornishman EPM 18426
- King Solomon EPM 18637
- Charlie Creek EPM 25466
- Birthday Hills EPM 25467
- Mining Lease (not ActivEX Ltd)
- Road
- Access Track
- Railway

Geology

- Cainozoic
- Alluvial, Colluvial and Sedimentary Cover
- Palaeozoic
- Carboniferous-Permian Granitoid
- Carboniferous-Permian Volcanic
- Devonian Sediment
- Ordovician Volcanic
- Palaeozoic Felsic Granitoid
- Palaeozoic Mafic Granitoid
- Cambrian Volcanic

RAVENSWOOD GOLD PROJECT



Figure 7. ActivEX Limited Ravenswood Gold Project tenement and prospect locations.

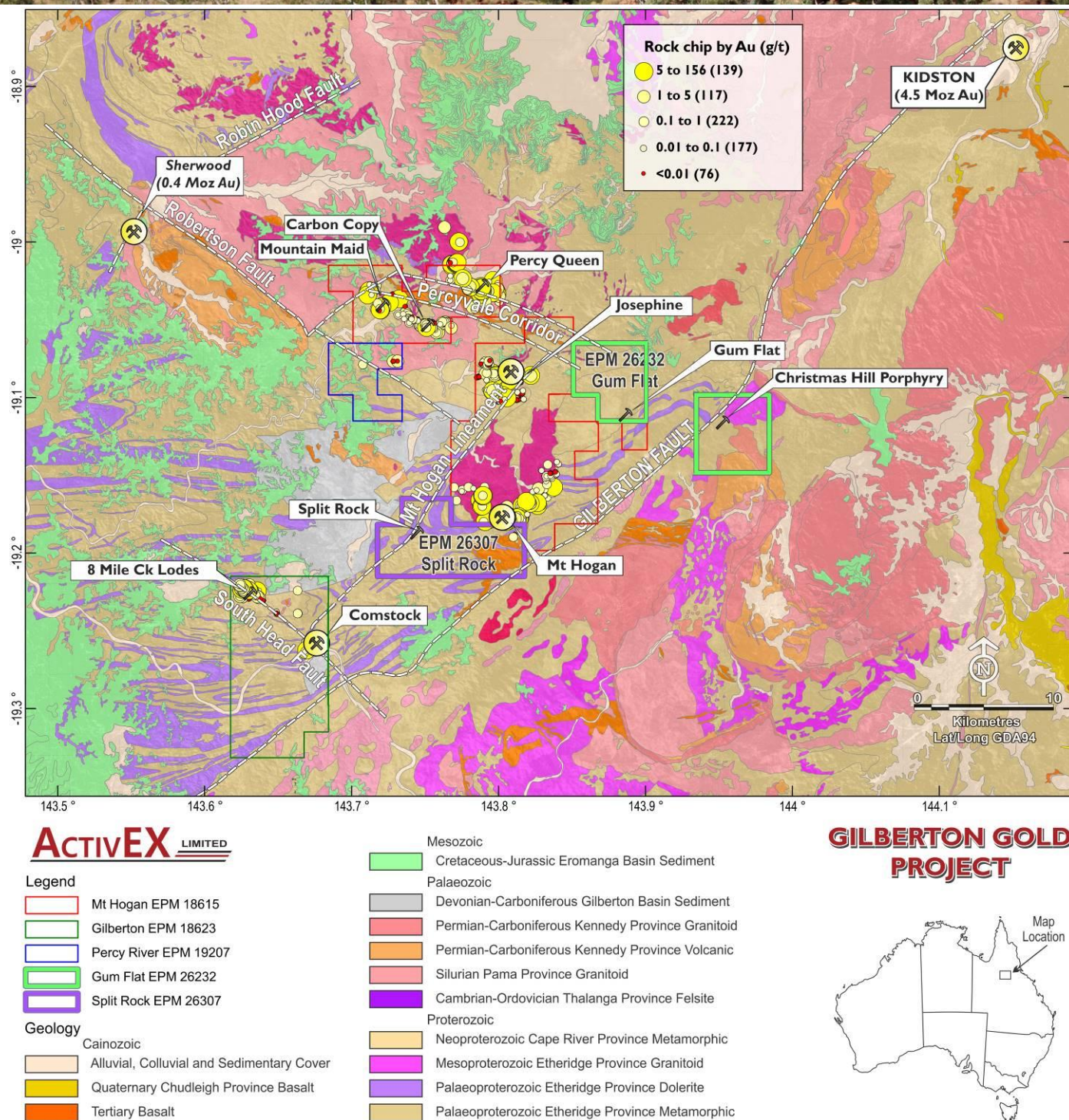


Figure 8. ActivEX Limited Gilberton Gold Project regional geology, tenements, prospect and rock chips thematically mapped by Au content.



Figure 9. Representative sample from Mt Hogan open pit, displaying a classic hypozonal quartz texture

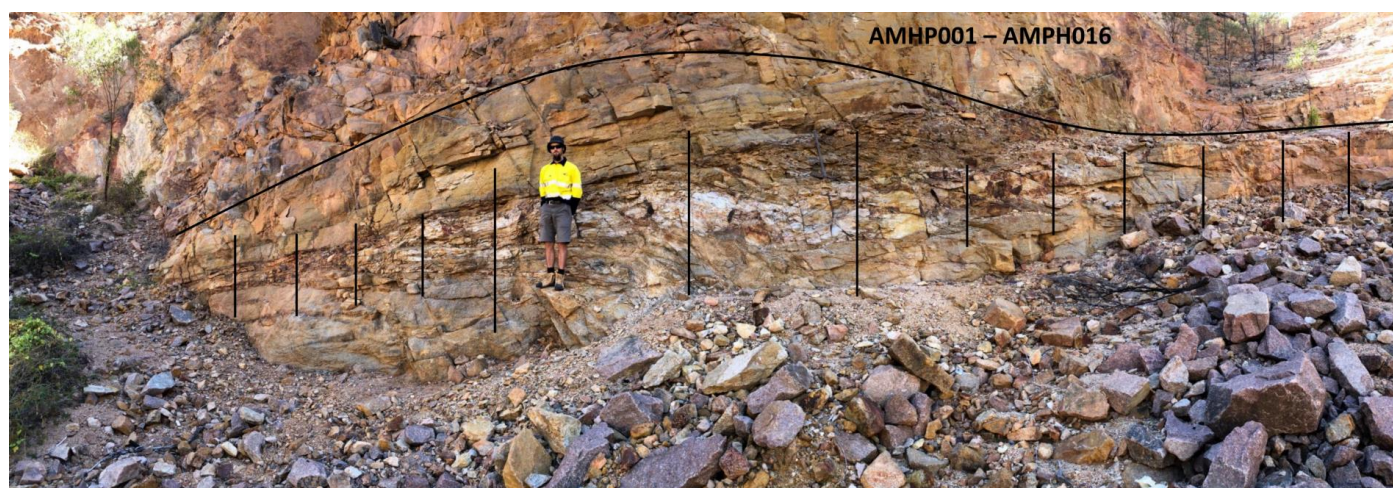


Figure 10. Mt Hogan open pit (Facing NNW, black lines indicate samples location)

Further exploration activities such as geological and structural mapping; focussed rock chip sampling; and conventional soil sampling will be undertaken at Mt Hogan, Gilberton, Percy River, Gum Flat and Split Rock EPMs (e.g. Gum Flat, Bernecker, Split Rock and Christmas Hill prospects) with a view delineating drilling targets at the Gilberton Gold Project during the 2019 field season.

PENTLAND GOLD PROJECT – North Queensland

(EPM 14332 – ActivEX 100%,

The Pentland Gold Project consists of tenement EPM 14332 (Pentland), which comprises a total of 39 sub-blocks and encompass an area of 125km² (Figure 2 & 11). The Project is located in the Charters Towers district of northern Queensland. The township of Pentland is located within the tenement area, in the southeast of EPM 14332. The project contains 4 established prospects where ActivEX has carried out extensive ground-based surveys and these areas are drill-ready with a number of targets already identified. Outside of these areas, the project package is only lightly explored and significant potential remains.

The Pentland tenement encompasses much of the Cape River Gold and Mineral Field. Alluvial, deep lead and primary gold were discovered along the Cape River in 1867. Recorded production from the field was around 45,000 ounces (approximately 1400kg), but true production was considerably more as there is no record of the amount extracted by the Chinese miners, who were almost as numerous as Europeans during the productive years of the field in the late 1800's. Several areas within the Exploration Permit have seen small scale mining since that time. The Pentland tenements cover an area in which a wide variety of mineralisation styles have been identified and worked in part, including quartz vein gold, alluvial, eluvial and deep lead gold, shear zone hosted gold, epithermal and porphyry-related gold, porphyry-related copper-molybdenum, and shear-breccia zone hosted Pb-Cu-Au.

Gold, copper and molybdenum mineralisation is hosted in breccia zones containing diorite fragments in a vuggy quartz-sulphide matrix and steeply dipping, vuggy quartz-galena-sphalerite veins. There are many mineral occurrences in the tenement with four prospects currently under investigation at various stages in the exploration process.

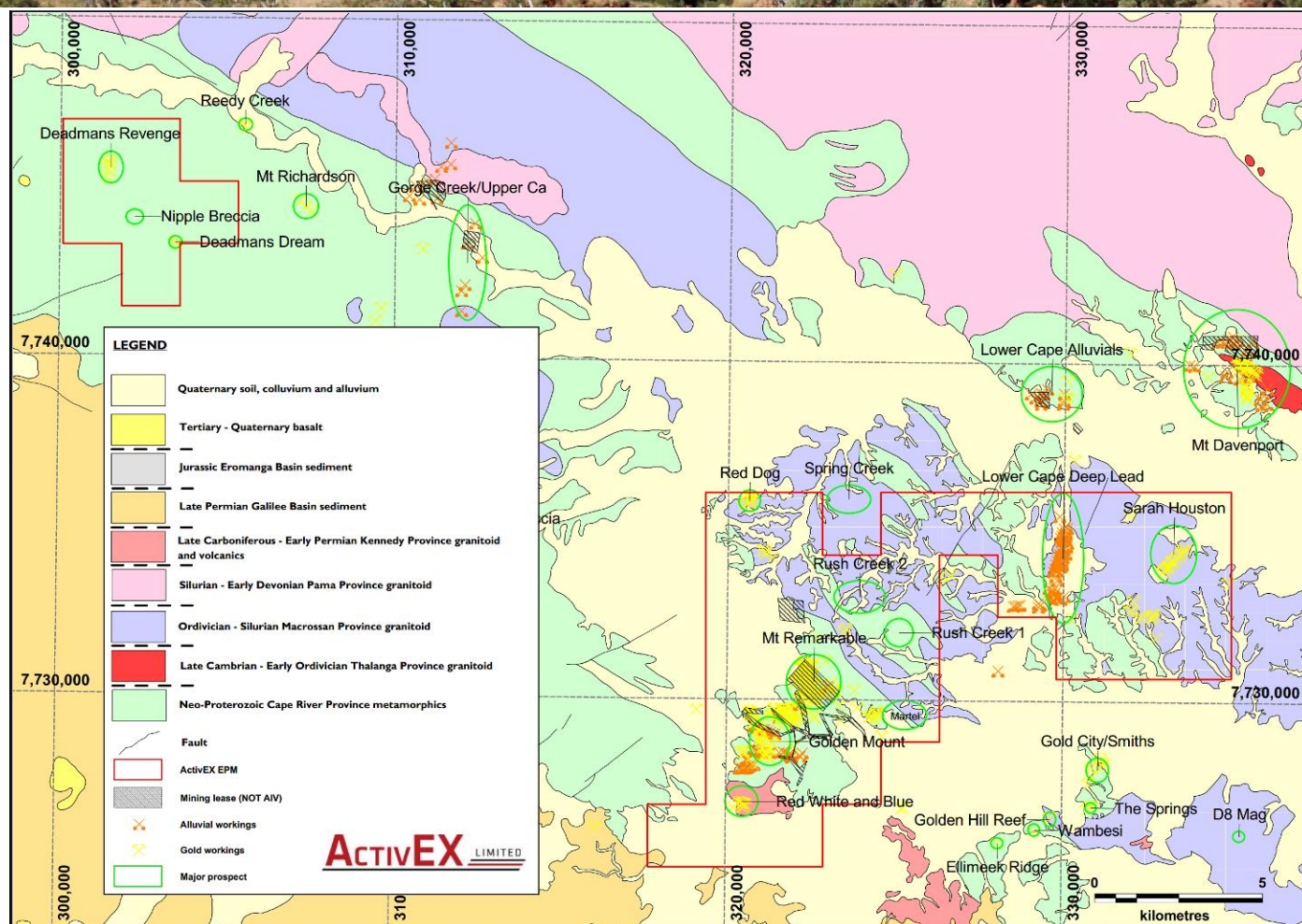


Figure 11. ActivEX Limited Pentland Gold Project regional geology

For further information contact:
 Mr Mark Derriman, Executive Director
 or Mr Craig McPherson, Company Secretary

Appendix 1

Declarations under 2012 JORC Code and JORC Tables

The information in this report which relates to Exploration Results is based on information reviewed by Mr. Mark Derriman, who is a member of The Australian Institute of Geoscientists (1566) and Mr. Xusheng Ke, who is a Member of the Australasian Institute of Mining and Metallurgy (310766) and a Member of the Australian Institute of Geoscientists (6297).

Mr. Mark Derriman and Mr. Xusheng Ke have sufficient experience that is relevant to the style of mineralisation and type of deposit under consideration and to the activities which he is undertaking to qualify as a Competent Person as defined in the 2012 Edition of the Australasian Code for Reporting of Exploration Results, Mineral Resources and Ore Reserves.

Mr. Mark Derriman and Mr. Xusheng Ke consent to the inclusion of his name in this report and to the issue of this report in the form and context in which it appears.

Appendix 2 LICENCES STATUS

Pursuant to ASX Listing Rule 5.4.3 the Company reports as follows in relation to minerals tenements held at the end of the June 2019 quarter and acquired or disposed of during that quarter and their locations. There was no change in beneficial interests under farm-in or farm-out agreements.

List of Exploration/Mining Tenements held by ActivEX Limited at 30 June 2019

(in accordance with ASX Listing Rule 5.3.3)

Project Name	Tenement Name	EPM	Status	Granted	Expires	Holder	Details	Interest at start of quarter	Interest at end of quarter	Sub-blocks at start of quarter	Sub-blocks at end of quarter
Southeast Queensland											
Barambah Gold	Barambah	14937	Granted	14-Mar-05	13-Mar-22	ActivEX Limited		100%	100%	9	9
	One Mile	18732	Granted	15-Oct-10	14-Oct-20	ActivEX Limited		100%	100%	16	16
Esk Copper and Gold	Boobyjan	14476	Granted	08-Jun-04	07-Jun-22	ActivEX Limited		100%	100%	15	15
	Dadamarine	14979	Granted	12-Apr-05	11-Apr-20	ActivEX Limited		100%	100%	11	11
	Blairmore	16265	Granted	04-Sep-07	03-Sep-22	ActivEX Limited		100%	100%	24	24
	Ban Ban	16327	Granted	31-Jul-07	30-Jul-22	ActivEX Limited		100%	100%	3	3
Coalstoun Lakes Copper and Gold	Coalstoun	14079	Granted	23-Oct-03	22-Oct-20	ActivEX Limited		100%	100%	50	50
Northwest Queensland											
Cloncurry Copper and Gold	Mt Agate	14955	Granted	29-Jun-06	28-Jun-21	ActivEX Limited		100%	100%	50	50
	Florence Creek	15285	Granted	30-Oct-07	29-Oct-22	ActivEX Limited		100%	100%	43	43
	Malbon	17313	Granted	24-May-10	23-May-21	ActivEX Limited		100%	100%	5	5
	Florence Flat	17805	Granted	21-Apr-11	20-Apr-21	ActivEX Limited		100%	100%	4	4
	Brightlands	18511	Granted	30-Apr-12	29-Apr-22	ActivEX Limited		100%	100%	11	11
	Selwyn East	18073	Granted	19-Sep-11	18-Sep-21	ActivEX Limited		100%	100%	36	36
	Concorde	25192	Granted	16-Dec-14	15-Dec-19	ActivEX Limited		100%	100%	21	21
	Heathrow East	25454	Granted	24-Dec-14	23-Dec-19	ActivEX Limited		100%	100%	11	11
	North Camel Dam	25455	Granted	01-May-15	30-Apr-20	ActivEX Limited		100%	100%	8	8
	Robur	18852	Granted	10-Aug-12	09-Aug-22	ActivEX Limited		100%	100%	20	20
	Bulonga	18053	Granted	27-Apr-12	26-Apr-22	ActivEX Limited		100%	100%	13	13
North Queensland											
Gilberton Gold	Percy River	19207	Granted	13-Dec-12	12-Dec-22	ActivEX Limited		100%	100%	7	7
	Mt Hogan	18615	Granted	19-Jun-13	18-Jun-23	ActivEX Limited		100%	100%	89	89
	Gilberton	18623	Granted	08-Apr-14	07-Apr-24	ActivEX Limited		100%	100%	29	29
	Gum Flat	26232	Granted	02-Feb-17	01-Feb-22	ActivEX Limited		100%	100%	17	17
	Split Rock	26307	Granted	06-Mar-17	05-Mar-22	ActivEX Limited		100%	100%	14	14
Pentland Gold	Pentland	14332	Granted	10-Dec-04	09-Dec-19	ActivEX Limited		100%	100%	39	39
Ravenswood Gold	Mt Leyshon	18424	Granted	08-May-12	07-May-22	ActivEX Limited		100%	100%	22	22
	King Solomon	18637	Granted	17-Aug-12	16-Aug-22	ActivEX Limited		100%	100%	8	8
	Cornishman	18426	Granted	16-Dec-14	15-Dec-19	ActivEX Limited		100%	100%	34	34
	Charlie Creek	25466	Granted	14-Oct-14	13-Oct-19	ActivEX Limited	Renewal Lodged	100%	100%	6	6
	Birthday Hills	25467	Granted	19-Mar-15	18-Mar-20	ActivEX Limited		100%	100%	34	34
Western Australia											
Lake Chandler Potash	Lake Chandler	M77/22	Granted	17-Jan-85	16-Jan-27	ActivEX Limited		100%	100%	359 ha	359 ha