



ASX: Li3

LITHIUM CONSOLIDATED LTD ACN 612 008 358

Entitlement Offer and Additional Offer

Investor Presentation
August 2019



IMPORTANT NOTICE

- Any material used in this presentation is only an overview and summary of certain data selected by the management of Lithium Consolidated Limited (**Li3**).
- The presentation does not purport to contain all the information that a prospective investor may require in evaluating a possible investment in Li3 nor does it contain all the information which would be required in a disclosure document prepared in accordance with the requirements of the Corporations Act and should not be used in isolation as a basis to invest in Li3. Recipients of this presentation must make their own independent investigations, consideration and evaluation of Li3.
- Li3 recommends that potential investors consult their professional advisor/s as an investment in Li3 is considered to be speculative in nature.
- Statements in this presentation are made only as of the date of this presentation unless otherwise stated and the information in this presentation remains subject to change without notice. Reliance should not be placed on information or opinions contained in this presentation.
- To the maximum extent permitted by law, Li3 disclaims any responsibility to inform any recipient of this presentation on any matter that subsequently comes to its notice which may affect any of the information contained in this document and presentation and undertakes no obligation to provide any additional or updated information whether as a result of new information, future events or results or otherwise.
- No representation or warranty, express or implied, is made as to the fairness, accuracy, completeness or correctness of the information, opinions or conclusions contained in or derived from this presentation or any omission from this presentation or of any other written or oral information or opinions provided now or in the future to any person.
- To the maximum extent permitted by law, neither Li3 nor, any affiliates, related bodies corporate and their respective officers, directors, employees, advisors and agents, nor any other person, accepts any liability as to or in relation to the accuracy or completeness of the information, statements, opinions or matters (express or implied) arising out of, contained in or derived from this presentation or any omission from this presentation or of any other written or oral information or opinions provided now or in the future to any person.



ENTITLEMENT AND ADDITIONAL OFFERS

Entitlement Offer ^(a)	<ul style="list-style-type: none">Lithium Consolidated Limited (Li3) is raising up to approximately \$1.2 million through a non-renounceable pro-rata Entitlement Offer of 1 New Share for every 4 Shares held by Eligible Shareholders^(b)
Additional Offer ^(a)	<ul style="list-style-type: none">An additional Offer to other Investors of New Shares will be made on the same terms as the Entitlement Offer to raise up to \$2.0m^(b)
Total Offer Size ^(a)	<ul style="list-style-type: none">A total of up to \$3.2m to be raised under the Entitlement and Additional Offers
Issue Price & Attaching Option ^(a)	<ul style="list-style-type: none">The Issue Price will be \$0.05 per New ShareEvery New Share (under both the Entitlement Offer and the Additional Offer) will have 1 Attaching Option, being an option to subscribe for one ordinary share in the Company exercisable at \$0.05 cents per share on or before 30 September 2020
Offer Timetable ^(a)	<ul style="list-style-type: none">Opening Date of Offers (9.00 am Brisbane time): 7 August 2019Closing Date of Offers (5.00 pm Brisbane time): 4 September 2019Issue of New Shares and Attaching Options: 10 September 2019Expected despatch of holding statements for New Shares: 12 September 2019

Notes:

(a) All defined terms are as in the Li3 Prospectus dated 30 July 2019

(b) Please refer to the Li3 Prospectus dated 30 July 2019 for additional information



PROPOSED USE OF FUNDS FROM THE OFFERS

Proposed use of funds	Funds raised under Entitlement Offer only (next 6 months of activities) ^(b)	Funds raised under Entitlement Offer and Additional Offer (next 12 months) ^(b)
Exploration – Western Australia ^(a)	\$160,000	\$600,000
Exploration – Mozambique ^(a)	\$350,000	\$1,000,000
Exploration – Zimbabwe ^(a)	\$100,000	\$360,000
Corporate & Administration	\$390,000	\$780,000
Working Capital	\$94,026	\$209,026
Estimated costs of the Offers (including legal fees, Lead Manager's fees, Share Registry fees, ASX fees and other miscellaneous costs associated with the Offer)	\$85,000	\$230,000
Total (maximum raising)	\$1,179,026	\$3,179,026

Notes:

(a) Please refer to the Li3 Prospectus dated 30 July 2019 for additional information

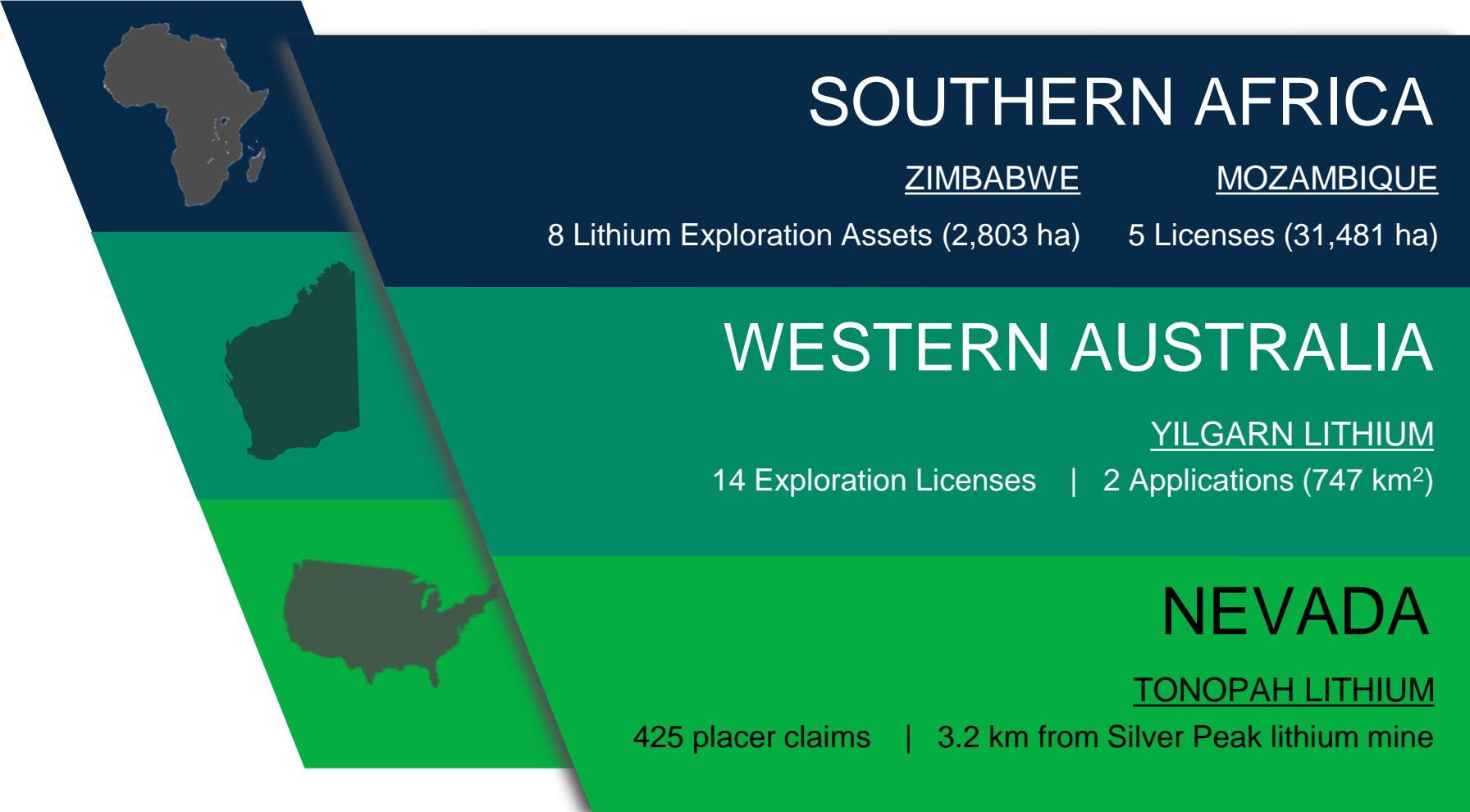
(b) All defined terms are as in the Li3 Prospectus dated 30 July 2019



COMPANY OVERVIEW

SHARES ON ISSUE (UNDILUTED) ^(a)	SHARE PRICE (7 August 2019)	Market capitalisation (7 August 2019)
94,322,122	\$0.055	\$5.2m

CAPITAL STRUCTURE	
NUMBER	CLASS
94,322,122	Ordinary Shares
4,000,000	Options @ varying exercise prices of \$0.15-0.20 and varying expiry dates between 31-Dec- 2019 to 31-Dec-2021
5,700,000	Performance Rights



Notes:
a) Excludes 4.0m options (with exercise prices of \$0.15-\$0.20) and 5.7m Performance Rights with varying vesting conditions

BOARD OF DIRECTORS & MANAGEMENT



**NON EXECUTIVE
CHAIRMAN**

**BRIAN
MOLLER**

Senior corporate partner at Hopgood Ganim Lawyers with 30 years experience.
Current Chairman of LSE-listed SolGold plc and Non Executive Director of several public companies. Admitted to practice in Queensland and Western Australia.



**CHIEF EXECUTIVE
OFFICER &
EXECUTIVE DIRECTOR**

**SHANTHAR
PATHMANATHAN**

Over 17 years of natural resources sector experience, including as investment banker with Deutsche Bank and Macquarie in Australia and USA.
Shanthar has been involved in M&A and financing deals with total value of +US\$3.6 billion.
Bachelor of Laws from the University of Western Australia.



**NON EXECUTIVE
DIRECTOR**

**VINCENT
MASCOLO**

Qualified mining engineer with extensive experience in gold and coal mining, quarrying and civil-works.
Director of various public and private companies over the past 25 years. Current Chief Executive Officer and Managing Director of AIM-listed, IronRidge Resources Ltd



**CHIEF FINANCIAL OFFICER
& COMPANY SECRETARY**

**DUNCAN
CORNISH**

Chartered Accountant with significant experience as public company CFO and Secretary, focused on junior resources companies. Over 20 years of experience both in England and Australia, predominantly with global firms Ernst & Young and PWC.

TECHNICAL TEAM

SB



SALLY BEVINGTON | EXPLORATION MANAGER

B.SC (HONS)

Sally is an exploration geologist with 20 years of experience in a variety of commodities including PGE's, base metals, coal, gold, chromite and bauxite. Sally has been involved in all aspects of project management from grassroots exploration through to feasibility studies and has spent her career based largely in Africa with a great deal of southern Africa experience. She has spent her career in the corporate, junior exploration and private equity sectors managing exploration and mining projects throughout Africa.

DH



DR DOUGLAS HAYNES | TECHNICAL ADVISOR

B.SC (HONS), PH.D, MAUSIMM

Former Chief Geologist at BHP Minerals and BHP Billiton Minerals and Chief Scientist at Western Mining Corporation Ltd.

Initiated various successful mineral resource discoveries:

1. Olympic Dam Cu-Au-U-REE
2. Wirrda Well Cu-Au-U-REE (South Australia)
3. Nifty Cu (Western Australia), Yandan Au (Queensland),
4. Ernest Henry Cu-Au (Queensland),
5. Kamo a Cu (Katanga Province, Democratic Republic of the Congo (Ivanplats Ltd), and
6. Gold deposits, including Yam 14 within the Yamarna greenstone belt (Western Australia).

DH



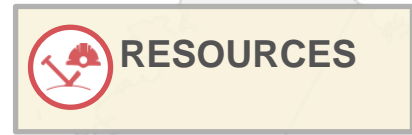
DR DARRYN HEDGER | TECHNICAL ADVISOR

B.APPSC, M.APPSC, PH.D, MAUSIMM, MSEG, MAIG, IAH

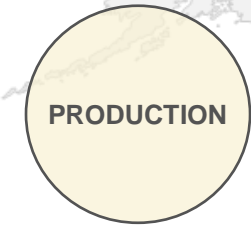
Geologist / Hydrogeologist with over 25 years' experience in minerals exploration. Masters Degree from University of NSW, PhD from the University of Queensland. Held positions with BHP Minerals, Freeport McMoran, BP Minerals and Zapopan, and has been involved with the discovery of several gold and uranium deposits in the Northern Territory.



GLOBAL LITHIUM SUPPLY REGIONS



RESOURCES



PRODUCTION

USA
Operator:
Albemarle

4%

6%

CHINA
Operators: Tianqi,
Genteng

40%

AUSTRALIA
Operators: Tianqi,
Albemarle, Galaxy,
Tawana

50%

ARGENTINA
Operators: FMC,
Orocobre, TTC

CHILE
Operators: SQM,
Albemarle

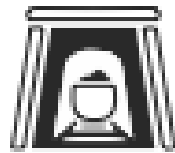
SOUTHERN AFRICA
HAS SIGNIFICANT
HARD ROCK LITHIUM
POTENTIAL BUT
REMAINS UNTAPPED

Sources: USGS (2017), Announced production



GLOBAL LITHIUM PORTFOLIO

MULTIPLE ASSETS



Multiple lithium exploration assets provide greatest exposure to global lithium growth

KNOWN LITHIUM PROVINCES



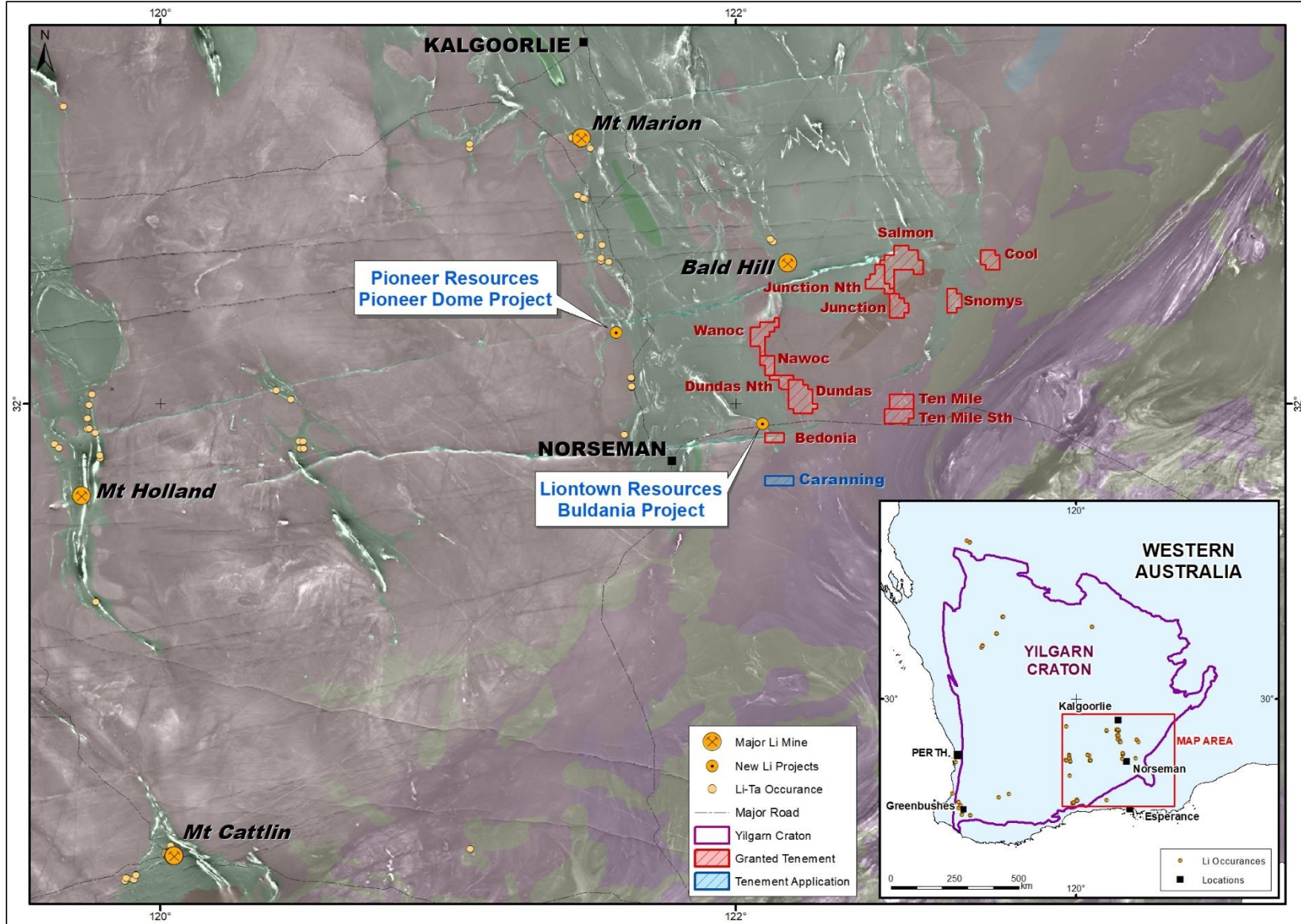
Western Australia, Mozambique & Zimbabwe are known hard rock lithium provinces with significant potential

UPCOMING DRILLING PROGRAMS



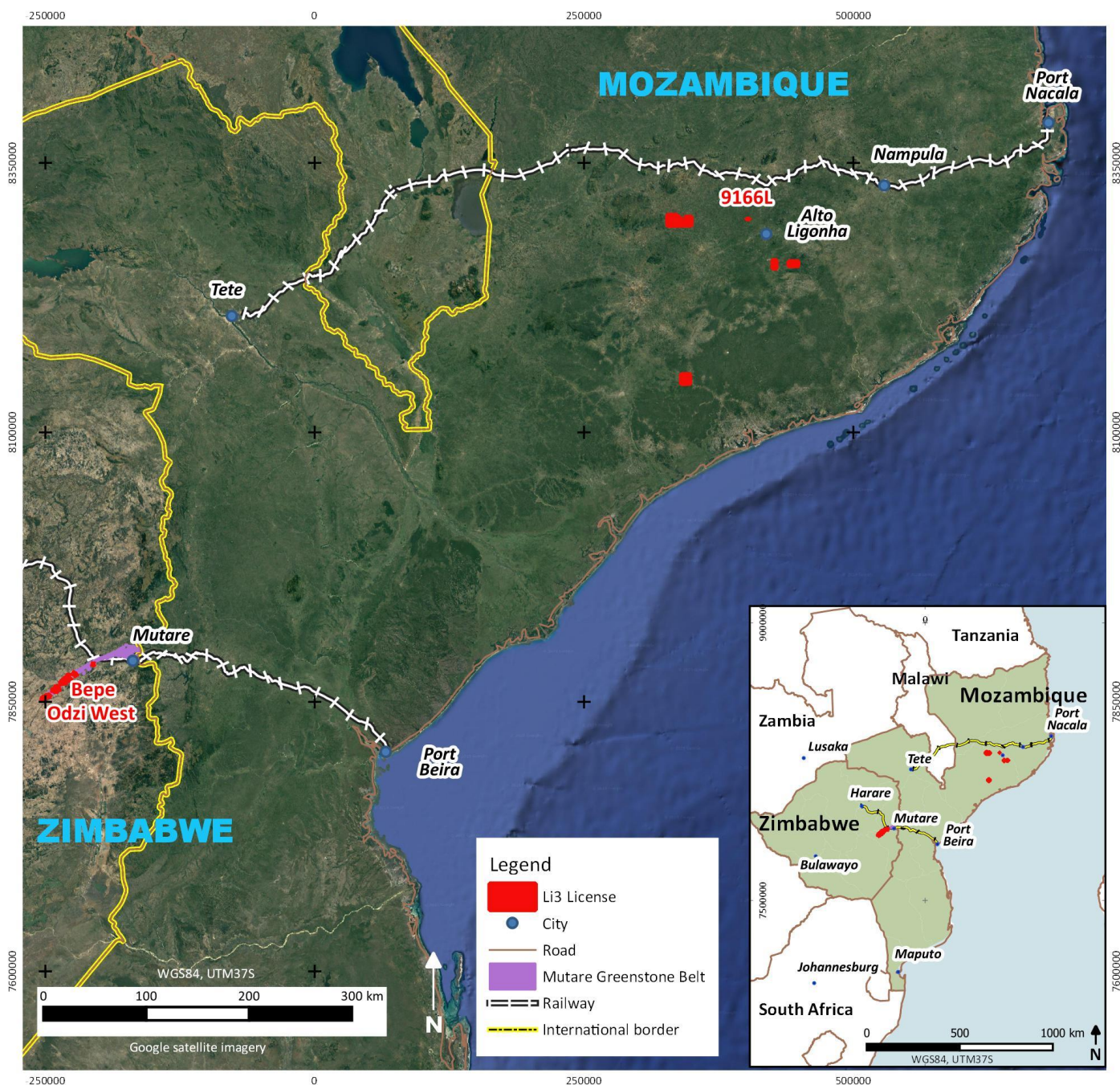
Drilling programs in Western Australia, 3,600m of RC drilling in Mozambique and 1,100m of RC drilling in Zimbabwe





WESTERN AUSTRALIA ASSETS



- 14 granted Exploration Licenses and 2 Exploration License Applications over 747km² (74,760 ha)
- Prospective for beta-spodumene bearing pegmatites
- 13 Lithium Plays: All Shallowly Concealed
- Strong new Li-indicator anomalies in four partly tested plays
- 8 require initial evaluation
- Anomalies require full delineation

MOZAMBIQUE & ZIMBABWE LITHIUM

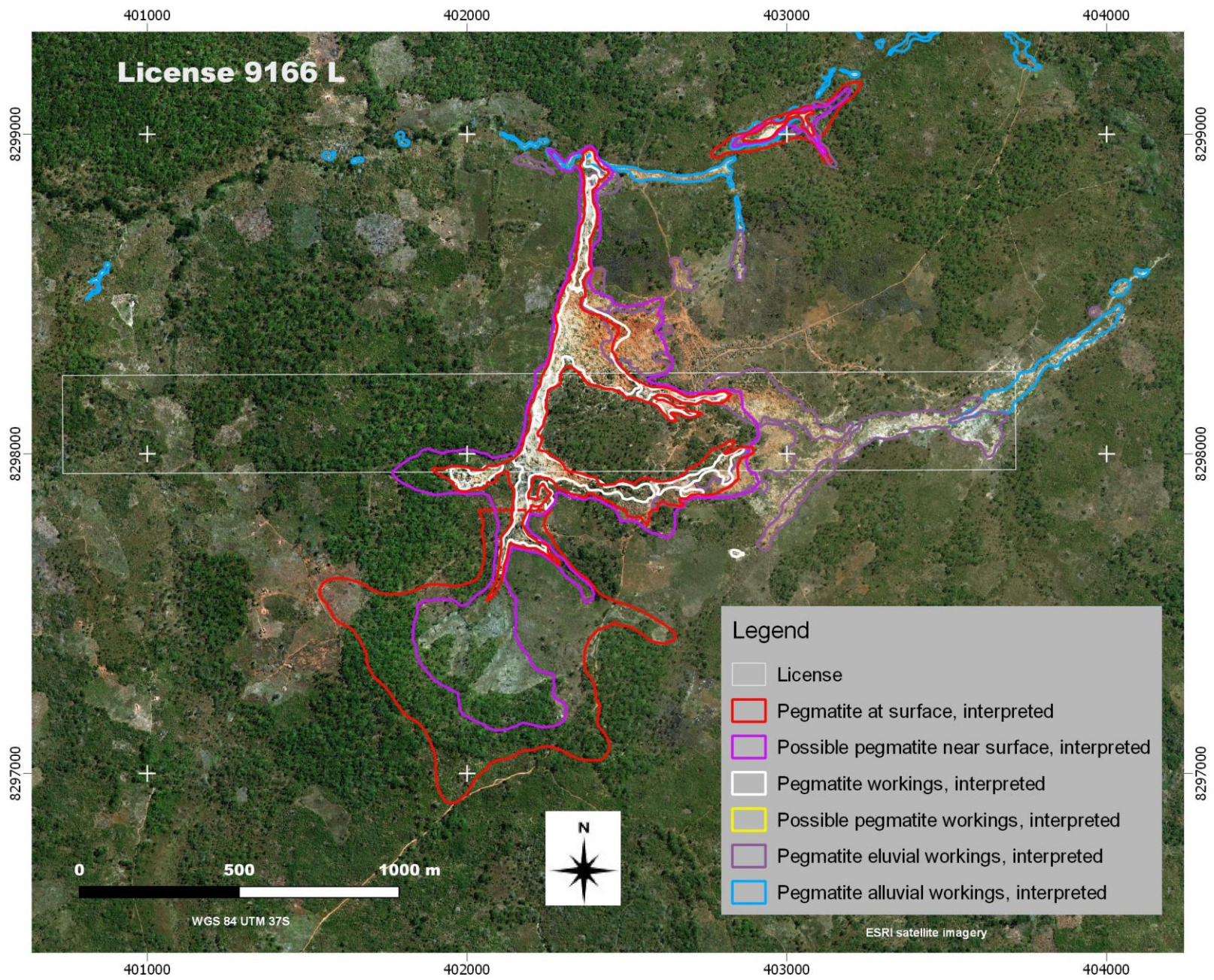


-  1st ASX listed company to enter Mozambique for lithium and 2nd in Zimbabwe
-  Lithium orebody targets at or near-surface and visible in outcrops or historical workings
-  Alto Ligonha Pegmatite Province has main concentration of pegmatites in Mozambique
-  Mozambique was the second largest producer of beryl with significant lithium, niobium and tantalum production during the 1960's
-  Mutare Greenstone Belt in Zimbabwe has locally extensive pegmatites which have been historically mined for beryl, tantalite, cassiterite, and lithium minerals
-  Mozambique and Zimbabwe are geologically comparable to Pilbara Craton in Western Australia
-  Well-developed infrastructure coverage (within 300km of Port facilities)
-  Mozambique and Zimbabwe are pro-mining jurisdictions^{(a),(b)}

Note:

- (a) 2.00% Royalty on industrial minerals; 25% corporate tax rate; and 0.875% gross revenue commission to Minerals Marketing Corporation
- (b) 3.00% Royalty on lithium and 32% corporate tax rate

MOZAMBIQUE PRIORITY ASSET: 9166 L



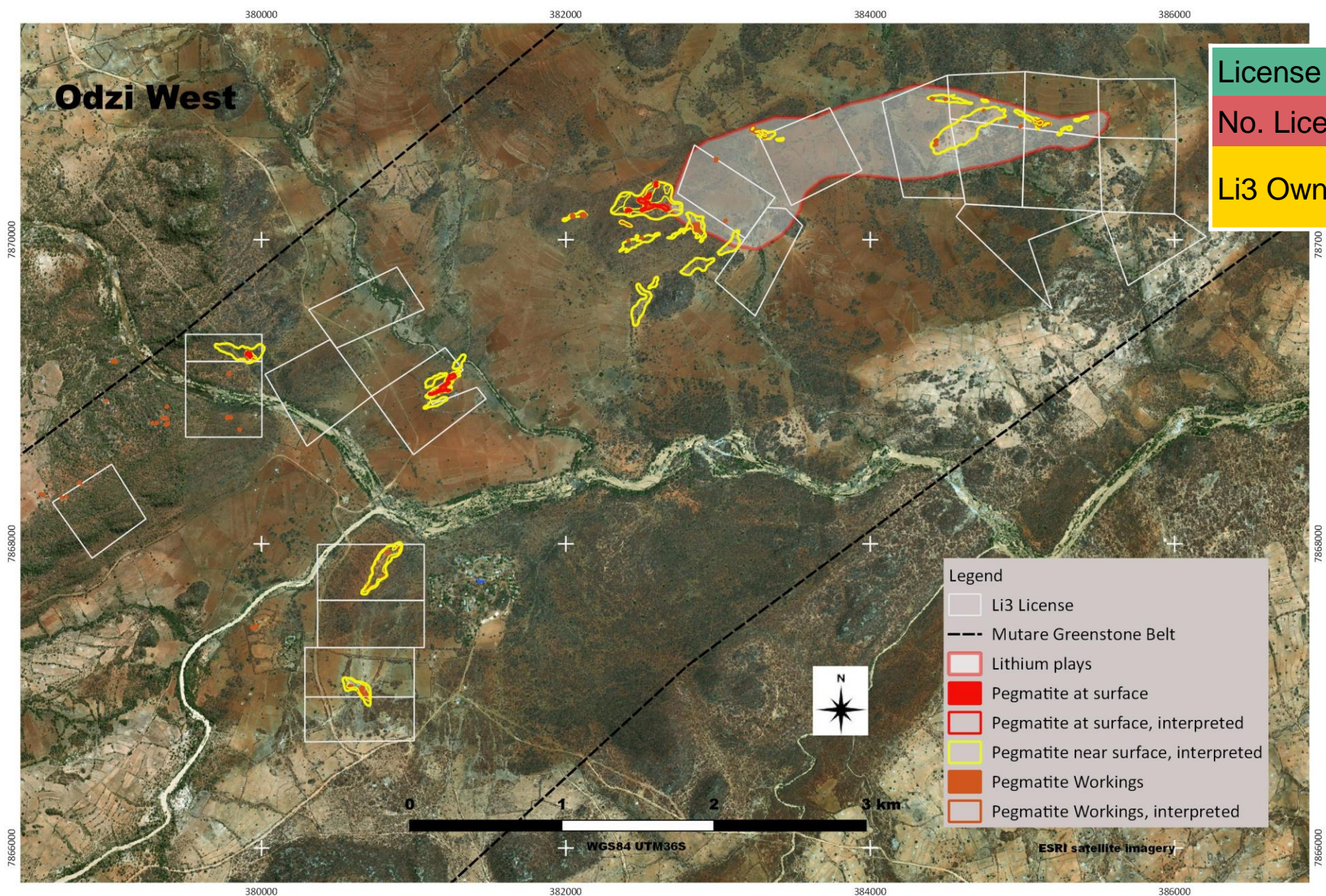
License area	91 ha
No. Licenses	1
Li3 Ownership	100% ^(a)

GEOLOGY

- Located on an interpreted pegmatite not recorded on prior maps of the region
- Area comprises undifferentiated rocks of the Nampula Complex, banded biotite gneisses and migmatitic biotite gneisses
- Imagery interpretation has identified extensive artisanal workings which appear to be located on a potentially large pegmatite body, the central portion of which is covered by the license

Note:
 (a) All Mozambique Assets owned through a Mozambique registered company, LithiumB, S.A., which is a wholly-owned subsidiary of Lithium Consolidated Ltd

ZIMBABWE PRIORITY ASSET: ODZI WEST



License area	497 ha
No. Licenses	22 (a)
Li3 Ownership	100%(b)

GEOLOGY

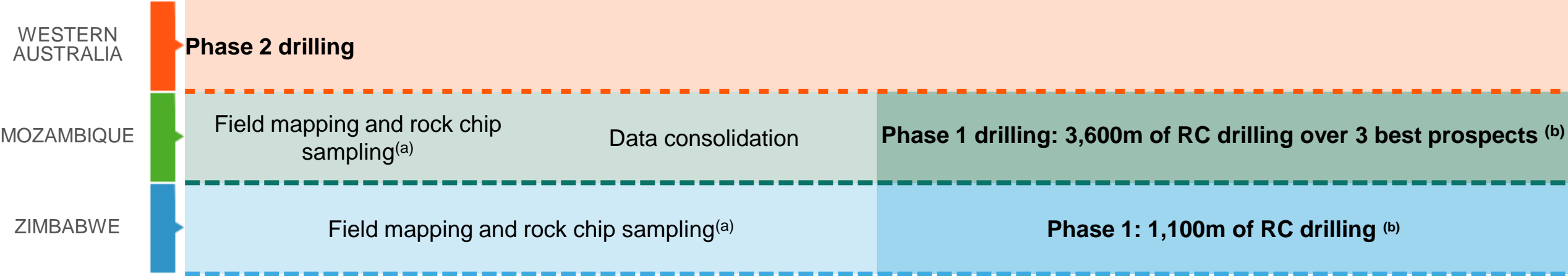
- Numerous clusters of shallow artisanal workings identified over outcropping pegmatites
- Lepidolite, tourmaline, garnet and cleavelandite confirmed within Odzi West license. Spodumene also reported in the area
- Exploration program planned to cover the full Odzi West area

Note:

- (a) Includes licenses not yet granted
- (b) All Zimbabwe Assets owned through a Zimbabwe registered company, LICOMEX (Private) Limited, which is a wholly-owned subsidiary of Lithium Consolidated Ltd



FORWARD WORK PROGRAM



Notes:
(a) Mineralised outcropping pegmatites will be delineated via field mapping and reconnaissance rock chip sampling. Size and potential will be established using systematic surface geochemical sampling incorporating rock chip sampling over outcrop and soil sampling in covered areas
(b) Prospective pegmatites will then be drilled using inclined holes to establish depth potential