

Windorah Gas Project

Developing a Significant Gas Field in the Cooper Basin



Real Energy Corporation Limited (ASX: RLE)
Good Oil conference September 2019



Disclaimer

Extent of Information

This document has been prepared by Real Energy Corporation Limited (“Real Energy” or “Company”).

This Presentation, including the information contained in this disclaimer, does not constitute an offer, invitation or recommendation to subscribe for or purchase any security and neither the Presentation, disclaimer nor anything contained in such forms the basis of any contract or commitment. This Presentation does not take into account your individual investment objective, financial situation or particular needs. You must not act on the basis of any other matter contained in this Presentation but must make your own assessment of the Company.

No representation, express or implied, is made as to the fairness, accuracy, completeness or correctness of the information contained in this Presentation, including the accuracy, likelihood of the achievement or reasonableness of any forecast, prospects, returns or statements in relation to future matters contained in the Presentation (“Forward-looking statements”). Any such forward-looking statements that are contained in this Presentation or can be implied by the same are by their nature subject to significant uncertainties and contingencies associated with the oil and gas industry and are based on a number of estimates and assumptions that are subject to change (and in many cases are outside the control of Real Energy and its directors) which may cause the actual results or performance of Real Energy to be materially different from any future results or performance expressed or implied by such forward-looking statements.

To the maximum extent permitted by law, none of Real Energy’s, or related corporations, directors, employees, agents nor any other person accepts and liability, including without limitation arising from fault or negligence, for any loss arising from use of this Presentation or its content or otherwise arising in connection with it.

Exclusion of Financial Product Advice

This Presentation is for information purposes only and is not a prospectus or other offering under Australian law or under any others laws in the jurisdictions where the Presentation might be available. Nothing herein constitutes investment, legal, tax or other advice. This Presentation is not a recommendation to acquire shares and has been prepared without taking into account the investment objectives, financial situation or needs of individuals.

Independent Advice

You should consider the appropriateness of the information having regard to your own objectives, financial situation and needs and seek appropriate advice, including, legal and taxation advice appropriate to your jurisdiction. Real Energy is not licensed to provide financial advice in respect of its shares.

Geological Information

The geological information in this presentation relating to geological information and resources is based on information compiled by Mr Lan Nguyen, who is a Member of Petroleum Exploration Society of Australia, the American Association of Petroleum Geologist, and the Society of the Petroleum Engineers and has sufficient experience to qualify as a Competent Person. Mr Nguyen consents to the inclusion of the matters based on his information in the form and context in which they appear. The information related to the results of drilled petroleum wells has been sourced from the publicly available well completion reports.

Investment proposition

01

Significant Acreage Real Energy owns 100% over 2,761 sq km in the Cooper Basin – with 2 high quality permits being - ATP927P and ATP1194PA

02

Resources Upgrade - Real Energy's acreage has a certified Estimated Total Mean Gas-In-Place of 13.76 TCF and a 3C gas resources of 770 BCF in ATP927P

03

4 wells drilled in ATP927P – all gas discoveries - Close to existing major developments and easy access to gas pipelines connecting Australian domestic market and LNG hubs
Initial flow of 2 mmcf/d and 2.5 mmcf/d from Tamarama 2 and 3 wells respectively

04

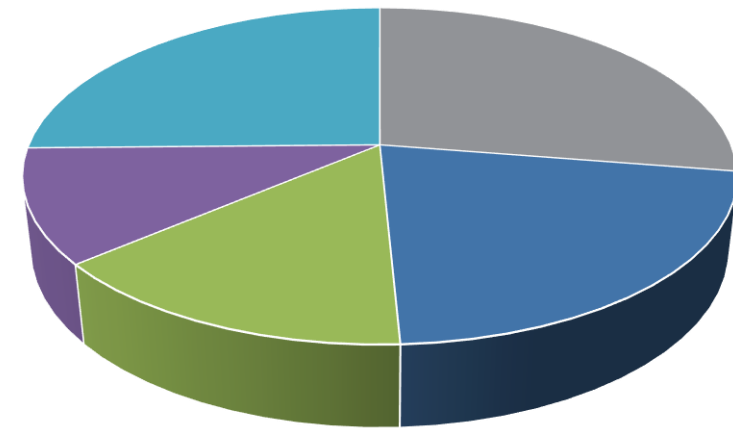
Agreement for gas transportation & processing executed with Santos Limited and Beach Energy Limited – Well placed to supply gas to the Eastern Australian gas markets which are short gas and dependent on undeveloped resources

05

Pipeline Licence PPL2041 granted by Queensland Government

Capital Structure

Capital Structure	
ASX Code	RLE
Ordinary Shares	349,419,204
Share Price	\$0.03
Market Capitalisation \$AUD	\$10.5m
Listed Options RLEOB	55,879,622
Cash 30 June 2019 \$AUD	\$3.3m
Debt	-
EV \$AUD	\$7.2m



- Other shareholders outside Top 100
- Funds and Institutions
- Directors
- Overseas Shareholders
- Other Top 100

Directors



Lan Nguyen
NON-EXECUTIVE CHAIRMAN

B.Sc (Mining Engineer-Geology), M.Sc (Petroleum Geology). Lan has over 25 years' experience in petroleum exploration, development and production in Australia and internationally. Previously as Managing Director of ASX listed Mosaic Oil, he transformed the company from a speculative petroleum explorer to a successful petroleum production company.



Scott Brown
MANAGING DIRECTOR

B.Bus, M. Commerce. Prior to Real Energy, Scott was the CFO of Mosaic Oil, a public Australian company with an extensive range of oil and gas production and exploration permits in Queensland, New Zealand and offshore WA. He is also a non executive director of Kairiki Energy Limited (ASX:KIK) and Shine Metals Limited (ASX:SHI).



John Wardman
NON-EXECUTIVE DIRECTOR

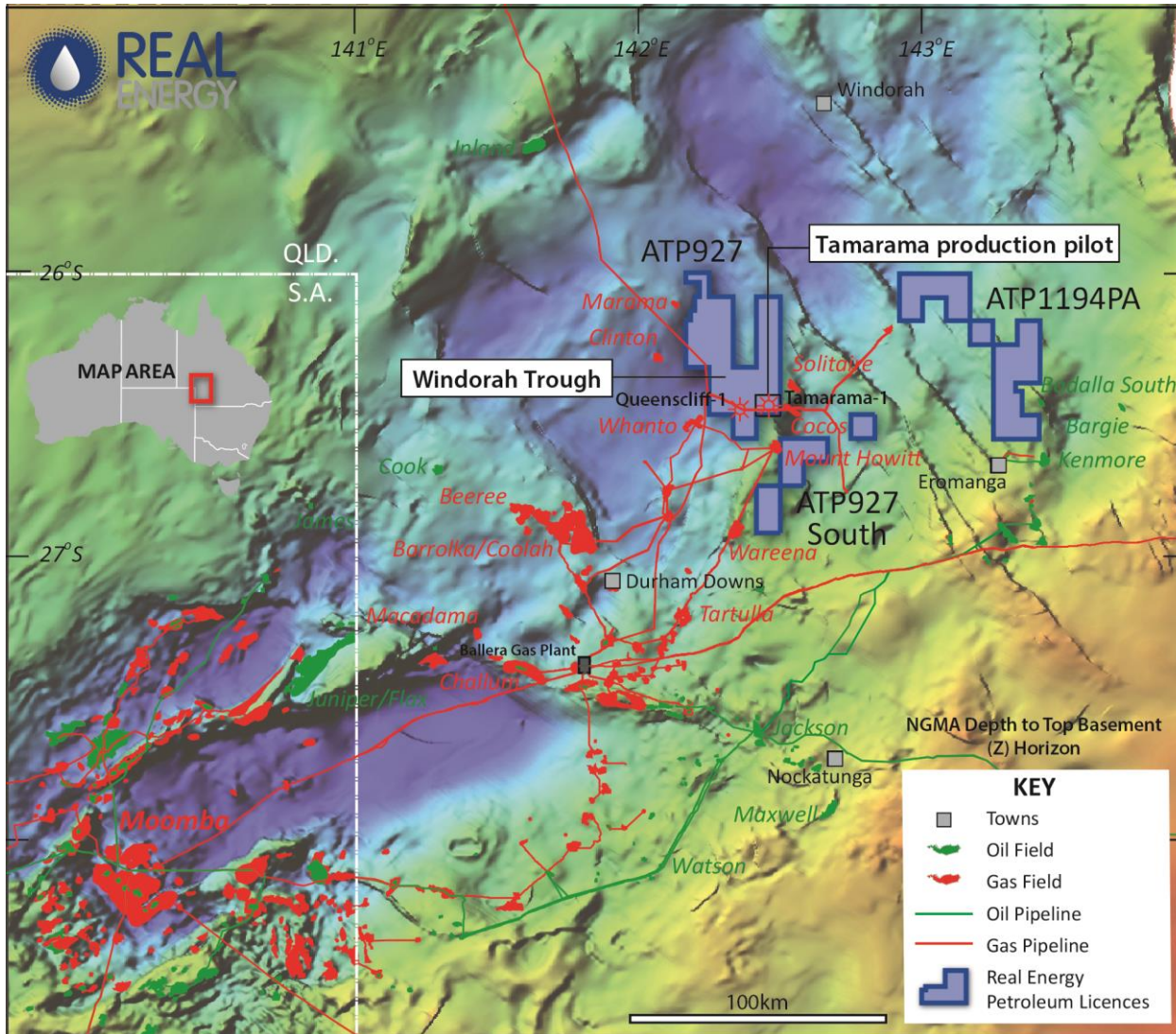
Mr Wardman is a stockbroker with over 25 years industry experience and special expertise in smaller stocks. For 13 years, John was with a senior adviser with Macquarie Private Wealth and more recently with a boutique Australian wealth management firm. John has an extensive network of contacts and clients.



Peter Mangano
NON-EXECUTIVE DIRECTOR

Peter has worked as a Fund Manager, Resource Analyst and Corporate Advisor over the last 30 years in the resources and energy sectors. He previously spent 6 years at Colonial First State, and 12 years in Citigroup including 6 years as a Managing Director and Deputy Head of US Equity Research in New York.

World Class Location



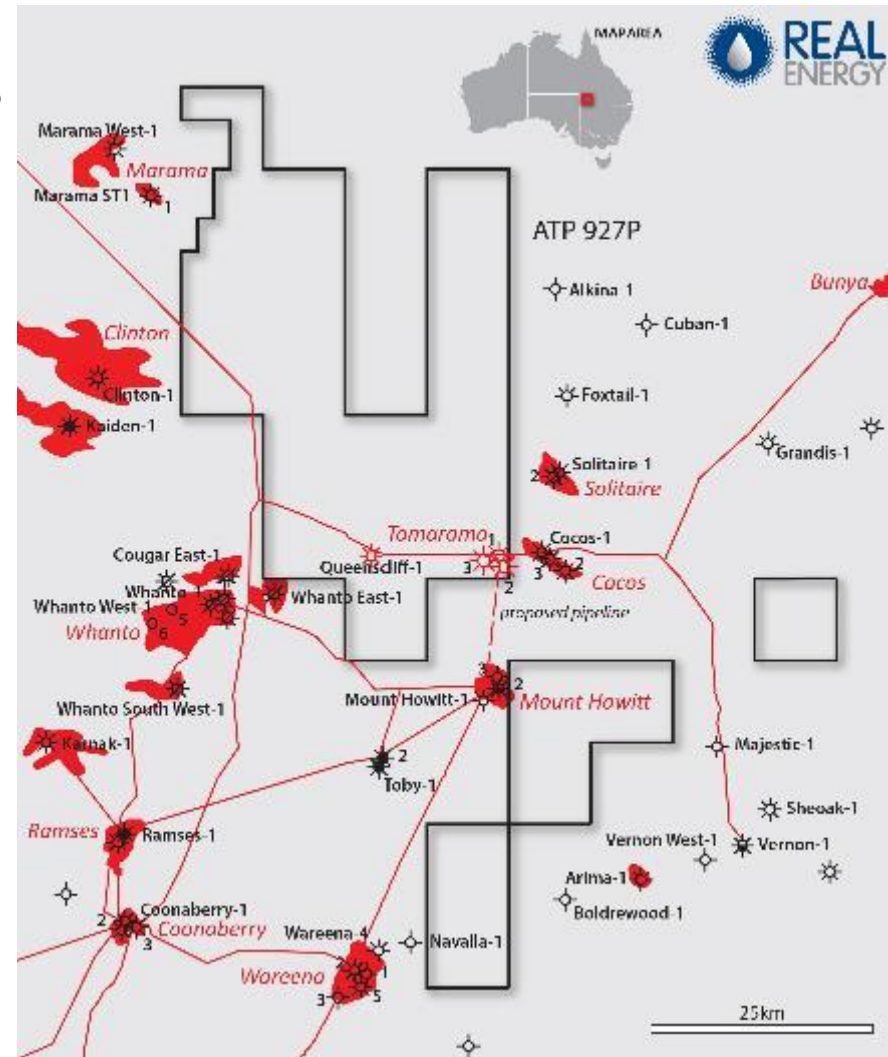
- ◆ The Cooper Basin is the premium onshore basin producing gas, NGLs, condensate and oil in SA & QLD
- ◆ Over 6 Tcf of gas and 300 Million BBLs of Oil produced
- ◆ 100% ownership in Queensland permits ATP 927P & ATP 1194PA
- ◆ Permits are in close proximity to major energy players with easy access to domestic and export markets
- ◆ Santos and Beach are drilling significant wells in the Cooper Basin in the next 12 months
- ◆ Close to existing large-scale developments and easy access to gas plants and pipelines connecting to domestic markets and LNG hub

Basin Centred Gas - Significant Gas Resources

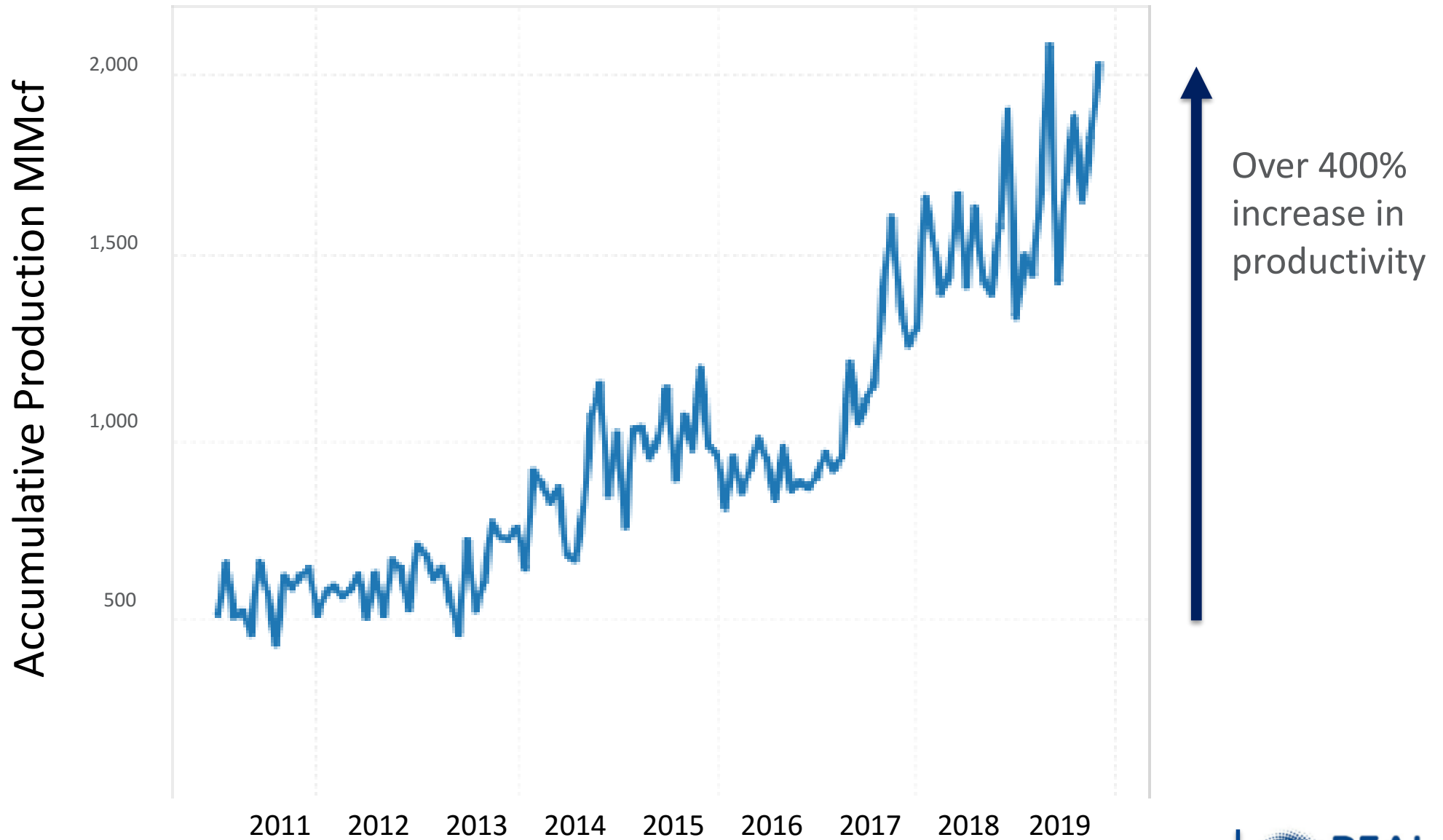
- 2 rounds of drilling – first round – Tamarama 1 & Queenscliff 1 – second round Tamarama 2 and Tamarama 3
- 3C gas resources upgrade to 770 BCF from four discoveries – Tamarama 1, 2 & 3 + Queenscliff 1
- Tamarama 2 had initial flow rates of 2 mmcf/d
- Tamarama 3 had initial flow rates of 2.5 mmcf/d
- Considerable improvements in Tamarama 2 and Tamarama 3 and further improvements expected through technology
- Designs of future wells likely to be horizontal (or near horizontal) wells with multi-staged fracs in the upper & middle Patchawarra sandstone units

Permit	Volume (BCF)	
	ATP 927P	ATP 1194P
Prospective OGIP	13,761	-
2C Resources	330	-
3C Resources	770	-

•Estimated Prospective OGIP are Mean Original Gas-In-Place excluding 2C/3C Resources.
 •Gas Volumes are expressed in billions of cubic feet (BCF) at standard temperature and pressure bases.
 •Resource estimates independently certified by DeGolyer & MacNaughton (Queenscliff area & Aeon Petroleum Consultants (Tamarama area)

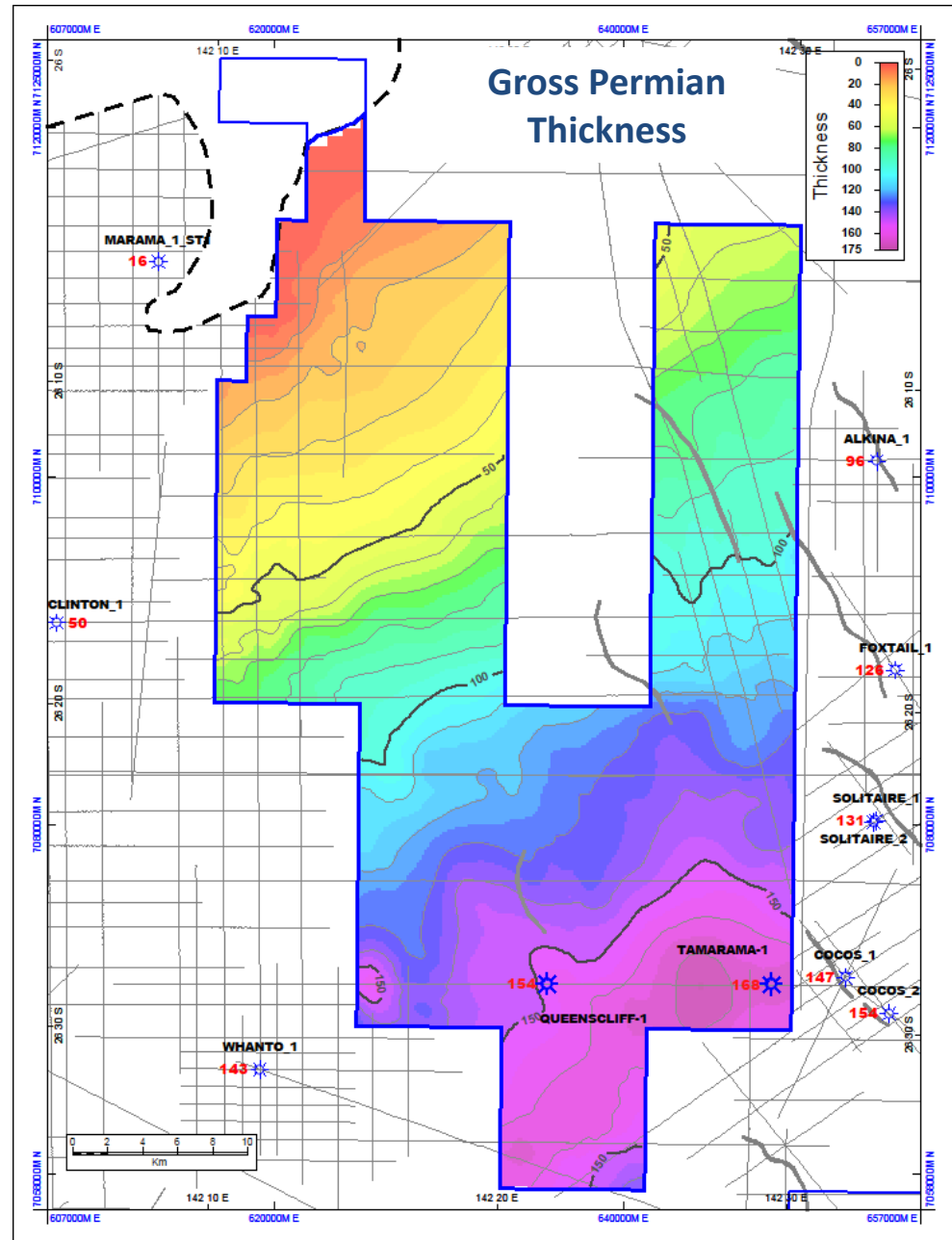
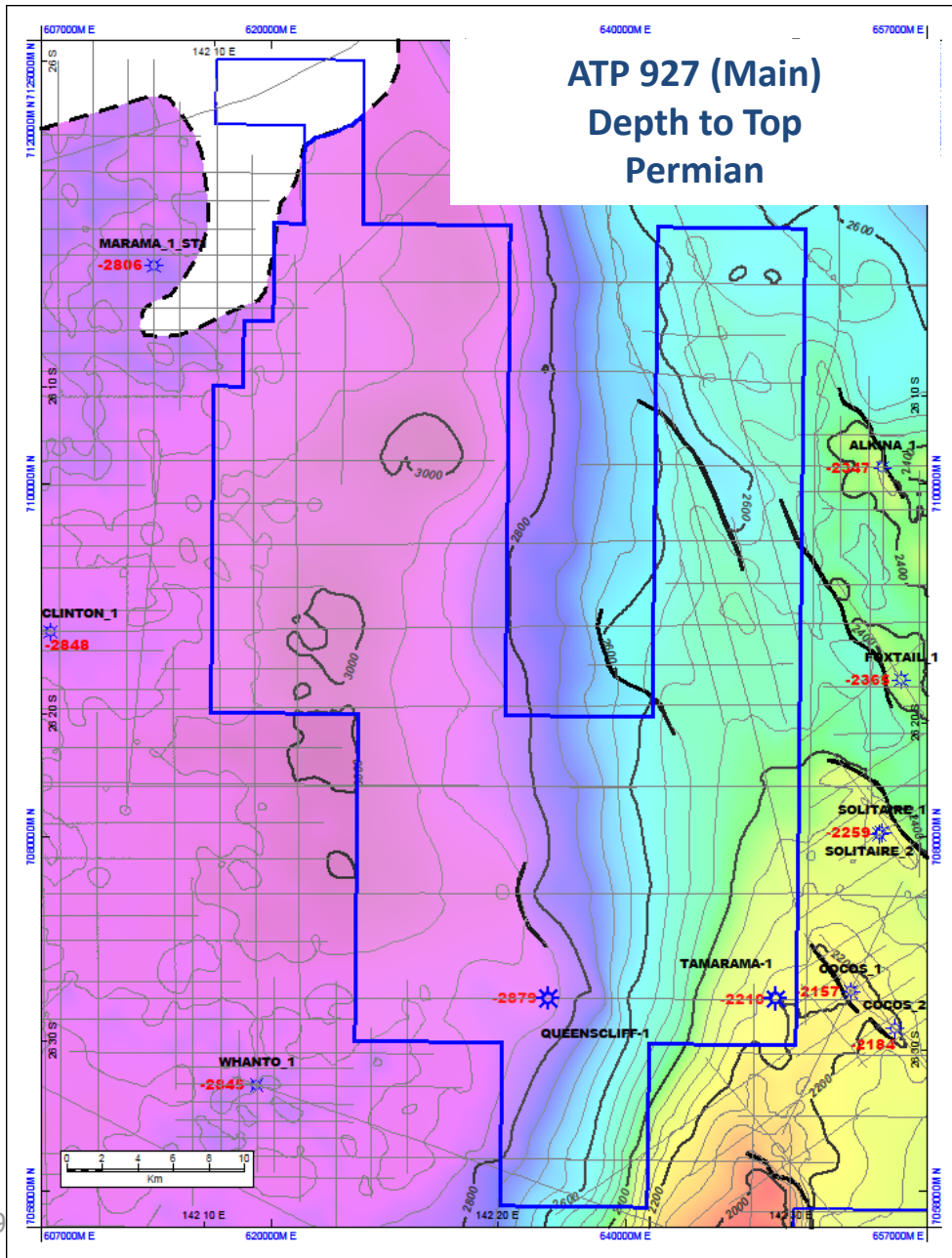


Marcellus production from new wells first six months

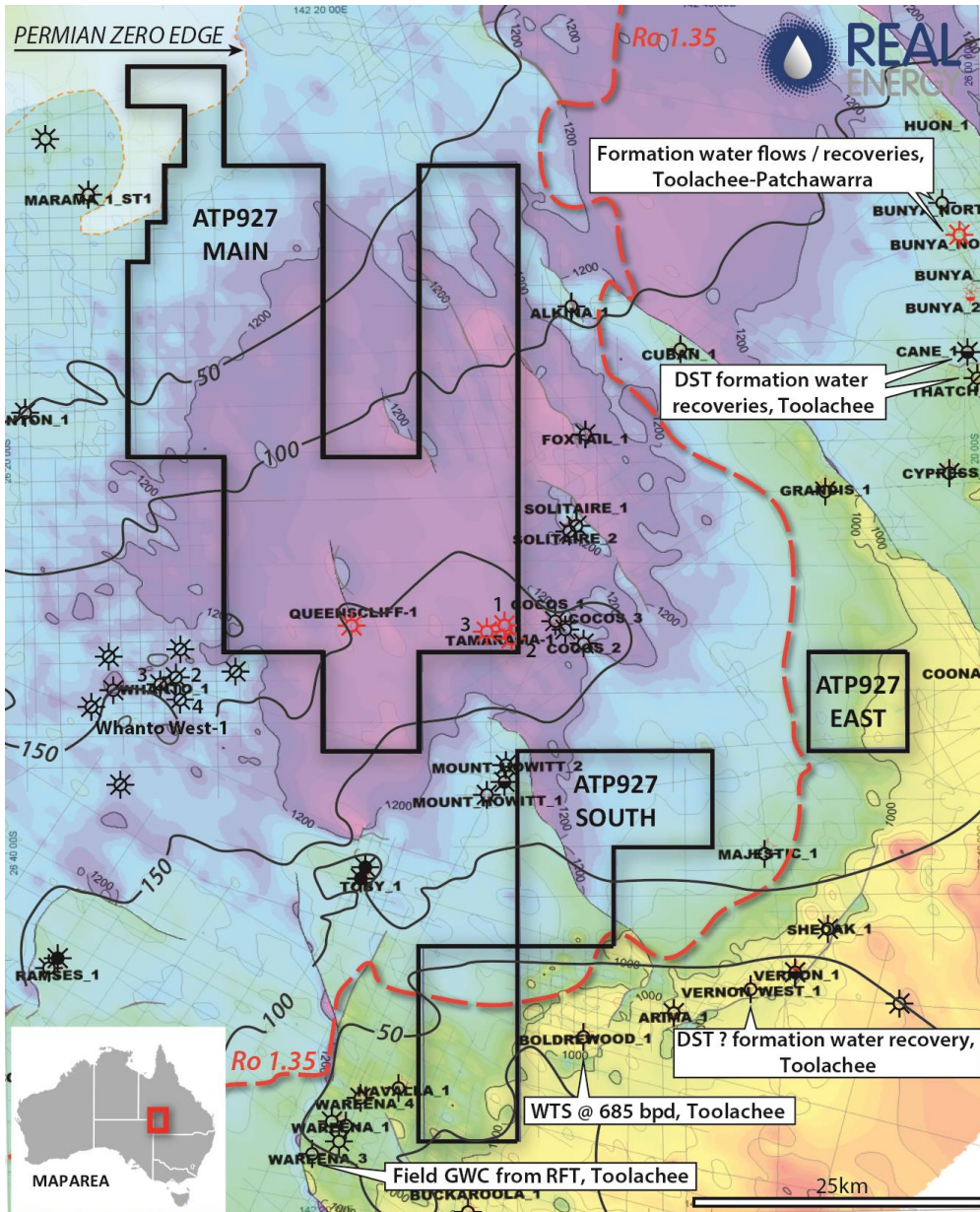


Source: <https://shaleprofile.com/2019/07/01/marcellus-pa-update-through-april-2019/>

Windorah Gas Project - ATP 927 Structural Setting



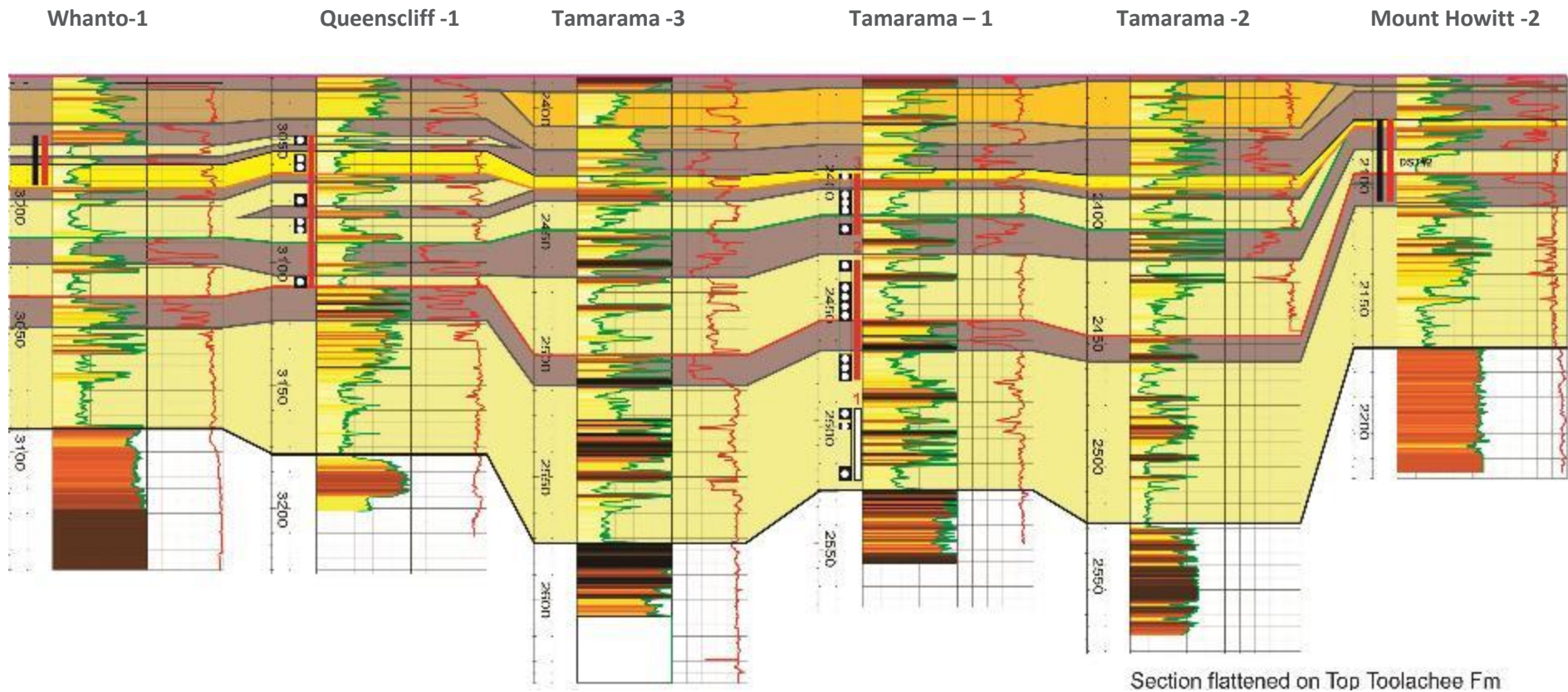
Where is the best part of the Basin Centred Gas play ?



- The Windorah Trough is a very large prospective gas resource (OGIP of 13.7 Tcf within ATP927)
- Colour fill shows structure at top Permian at the time of peak hydrocarbon generation and expulsion – purple is deep, yellows are shallow
- The contours represent thickness of the Permian section – thickest in central area, thinning to North and South
- The Ro 1.35 contour line represents thermal maturity of the Permian coaly source rocks. The best part of the play lies within ATP927

ATP 927 Permian Stratigraphy - log correlation

Toolachee & Patchawarra formations contain significant sandstone reservoirs which are gas charged and laterally extensive



Pathway to Production

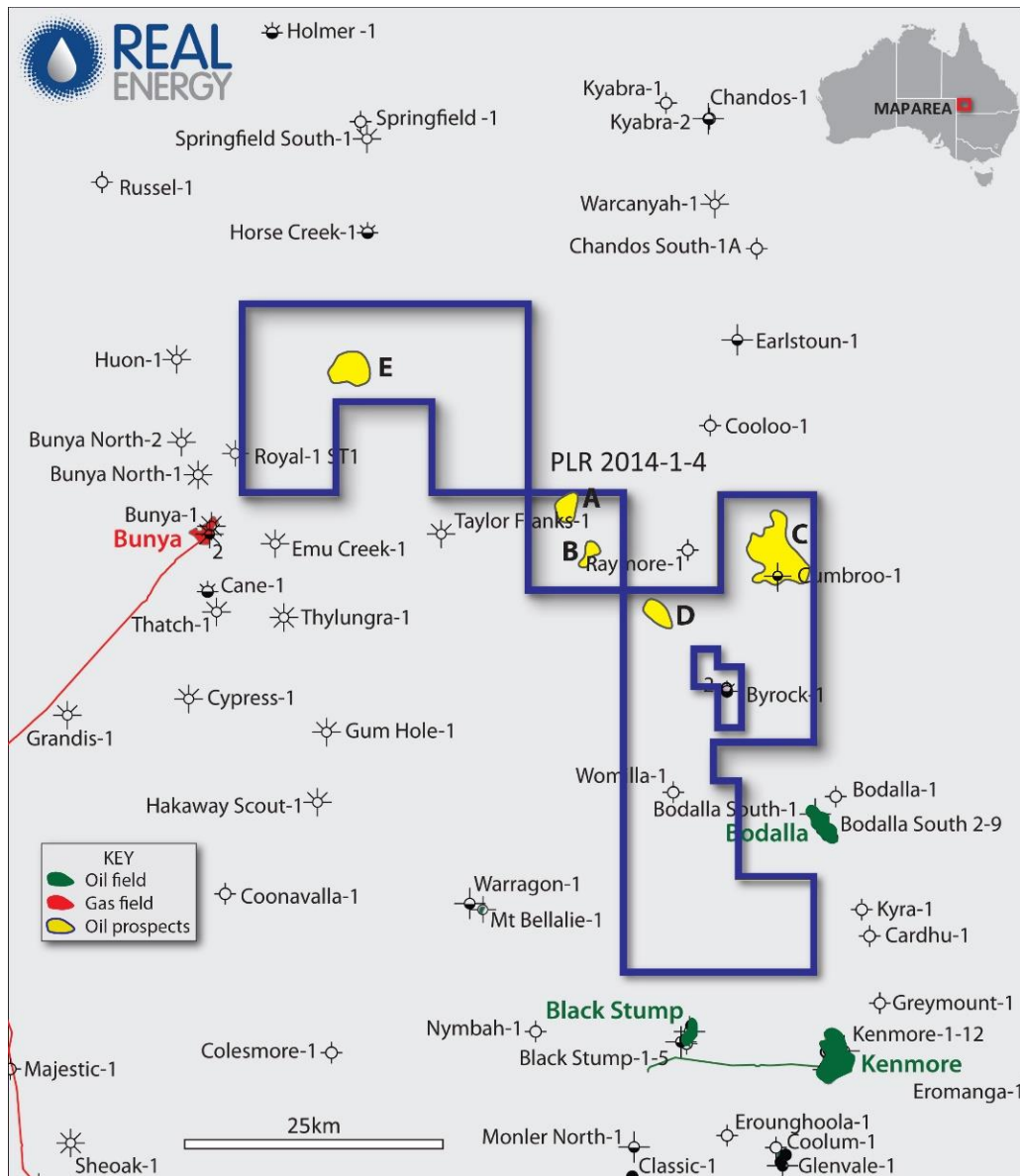


Tamarama 2 flaring from initial flow

- ◆ Real Energy signed a tie-in and Processing with Santos and Beach Energy so gas will be transported and processed at Moomba
- ◆ A pipeline licence has been granted between the Tamarama area and Mt Howitt
- ◆ Discussions are ongoing with potential farm in partners
- ◆ New well designs are likely to be horizontal (or near horizontal) wells with multi-staged fracs in the upper & middle Patchawarra sandstone units
- ◆ Real Energy will also include smaller proppant and better gel breakers



Eastern flank - Leads and Prospects



- ATP 1194PA – 1043 sq.kms – 100% RLE
- Permit adjacent to Kenmore (>12.5 mmbo produced) and Bodalla South (>6 mmbo produced) oil fields
- Preliminary mapping at Cadna-owie level identified 5 leads considered prospective for oil
- Resource potential (single zone):

Original Oil in Place MMbbls					
LEAD	P90	P50	P10	Mean	
A	0.39	0.94	2.12	1.13	
B	0.13	0.25	0.51	0.29	
C	1.06	2.23	4.57	2.56	
D	0.41	1.05	2.51	1.31	
E	0.76	1.63	3.40	1.91	

The estimates above are based on unrisks prospective resources through Monte Carlo simulation as at 30 June 2019 in accordance SPE-PRMS. The estimated quantities of petroleum that may be potentially recovered by the application of a future development related to undiscovered accumulations. These estimates have associated risk of discovery and a risk of development. Further exploration, appraisal and evaluation will be required to the potential of moveable petroleum.

Investment Summary

01

World Class Location in Cooper Basin - Close to existing major developments and easy access to major gas pipelines connecting Australian domestic market and LNG hubs

02

'Stronger for Longer' East Coast Gas Crisis – Well placed to supply gas to the Eastern Australian gas markets which are short gas and dependent on undeveloped resources

03

Significant Gas Resources – Real Energy's acreage has a certified Estimated Total Mean Gas-In-Place of 13.76 TCF and a 3C gas resources of 770 BCF in ATP927P

04

Flow back - Gas Flow Rates – Good initial flow backs of recently completed Tamarama 2 and 3 wells

05

Significant Acreage Real Energy owns 100% over 2,761 sq kms in the Cooper Basin – with 2 high quality permits being - ATP927P and ATP1194PA



Contact

Scott Brown – Managing Director
Ph: +61 2 9955 4008
E: scott.brown@realenergy.com.au

Real Energy Corporation Limited
Level 3, 32 Walker Street
North Sydney NSW 2060
Australia

