

ASX Code: AIV**30 October 2019****Issued Capital**

177,228,401 ordinary shares (AIV)

Market Capitalisation

\$31.9M (17 October 2019, \$0.18)

Directors

Min Yang (Chairman, NED)

Mark Derriman (Executive Director)

Geoff Baker (NED)

Dongmei Ye (NED)

Craig McPherson (Company Secretary)

About ActivEX

ActivEX Limited is a minerals exploration company committed to the acquisition, identification, and delineation of new resource projects through active exploration.

The ActivEX portfolio is focussed on copper and gold projects, with substantial tenement packages in the north and southeast Queensland and in the Cloncurry district of northwest Queensland.

The Company also has an advanced potash project in Western Australia where it is investigating optimal leaching methods for extraction and production of potash and by-products.

Suite 2, 3B Macquarie Street
Sydney, NSW 2000

admin@activex.com.auwww.activex.com.au

Phone +61 (02) 9251 9088

ABN 11 113 452 896

ACTIVITIES REPORT**QUARTER ENDED 30 SEPTEMBER 2019**

ActivEX Limited (ASX: AIV) ("ActivEX" or "the Company") provides the following summary of activities undertaken during the quarter ended 30 September 2019.

Summary and Highlights

- Significant rock chip assay results received from sampling within the Mt Hogan open pit, and at the Perryvale, Alcade and Limonite Prospects within the Gilberton Gold Project.
- Project partnering opportunities continued with third parties through provision of data for review and assessment.
- Farm-in & Joint Venture Agreement (JV) finalised with unlisted company Rockland Resources Pty Ltd (ACN 601 029 529) (Rockland) over the Company's 100% owned Pentland gold tenement located in North-east Queensland, approximately 100km west of Charters Towers. The tenement is located in the highly mineralised Cape River Province (Figure 2). An Airborne geophysical survey was completed by Rockland at the Pentland Project during the quarter.



Figure 1. ActivEX Limited Projects and tenements.

OVERVIEW

Field Exploration Activities

ActivEX Limited ('ActivEX' or the 'Company') is pleased to announce that during the quarter it completed field-based exploration activities at the Gilberton Gold Project focusing on rock chip sampling in the Mt Hogan open pit and areas of other known mineral occurrences and workings.

ActivEX's Queensland tenement holding remains substantial and comprises a total of 29 granted EPMs, for a total of 649 sub-blocks and encompasses an area of 1,959km² (Figure 1 & 2). ActivEX Limited holds a 100% interest in all of the tenements.

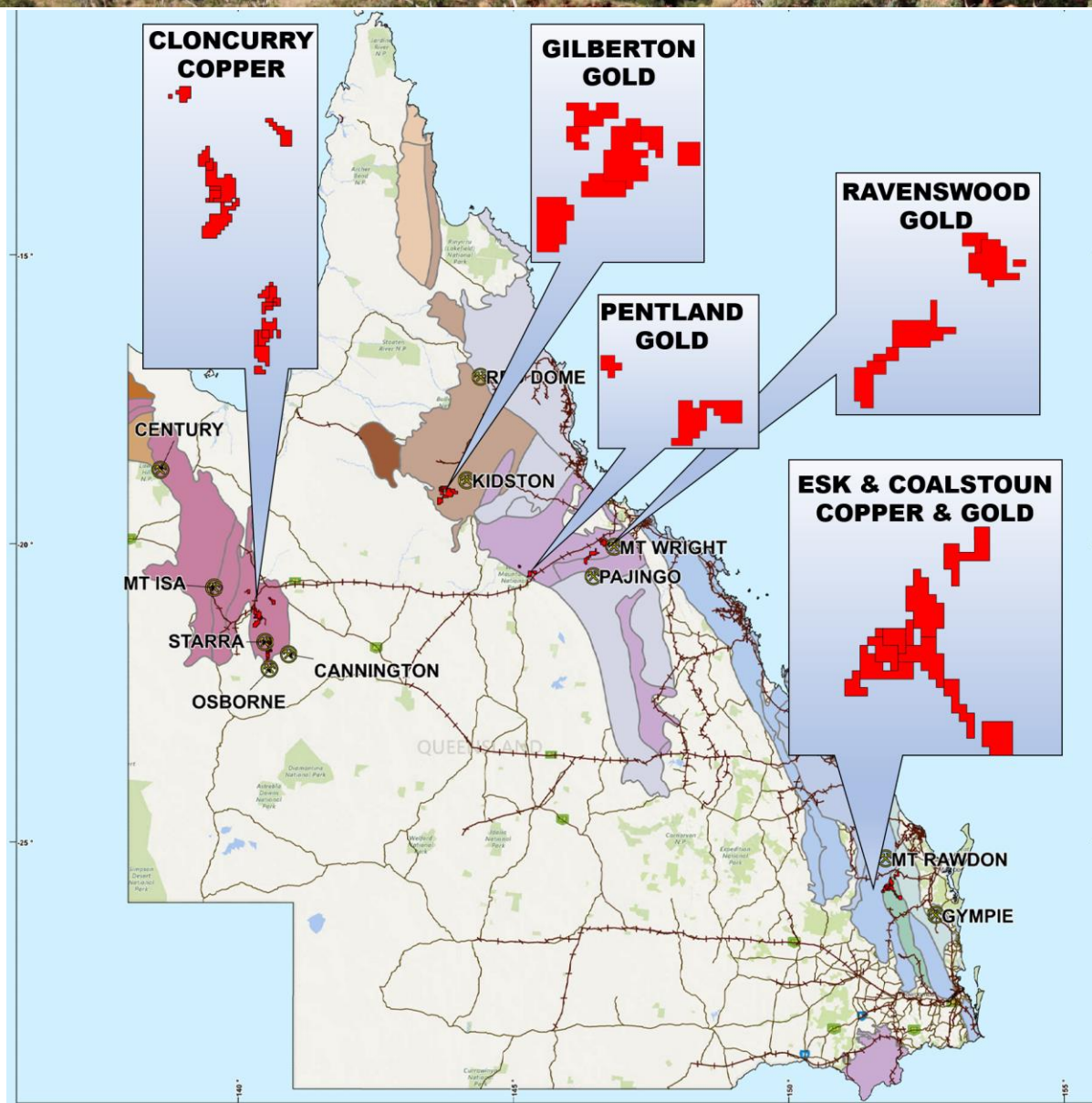
CORPORATE

During the quarter the Company continued to advance projects partnering opportunities through the provision of data to third parties for their review and assessment. The Company will update the market should any agreement be finalised.

Subsequent to the end of the quarter, the Company announced that it had finalised a Farm-in & Joint Venture Agreement (Joint Venture) with unlisted company Rockland Resources Pty Ltd (ACN 601 029 529) (Rockland) over the Company's 100% owned Pentland gold tenement located in North-east Queensland, approximately 100km west of Charters Towers. The tenement is located in the highly mineralised Cape River Province. Rockland completed an airborne geophysical survey over the Pentland Project with preliminary processing completed.

FINANCIAL

As at 30 September 2019, the Company had approximately \$67,000 in cash and has access to undrawn facilities of \$2,325,000, pursuant to the \$4 million loan facility agreements entered into with ASF Group Limited (\$2m) and Star Diamond Developments Limited (\$2m).



ActivEX LIMITED

Legend

- Town
- Road
- Railway

Tectonic Province

- Savannah / Iron Range Province
- Murphy / Western / Kalkadoon-Ewen / Eastern Province
- Hogkinson / Broken River / Clarke River Province
- Etheridge Province
- Croydon Province
- Cape River / Anakie / Thalanga Province
- New England Orogen

ACTIVEX QUEENSLAND TENEMENTS

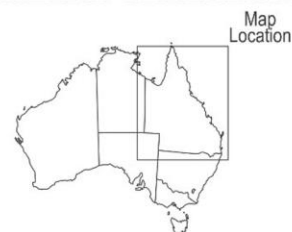


Figure 2. ActivEX Limited Queensland Projects and tenements.

OPERATIONS

During the quarter, field-based exploration activities were completed at Gilberton Gold Project. Assay results have been received from rock chip sampling within the abandoned Mt Hogan open cut gold mine (Mt Hogan tenement, EPM 18615), Gilberton Gold Project (Figure 3). Attendant rock chip samples have been assayed returning assays of up to 40.5g/t Au from Mt Hogan open pit wall. The Mt Hogan abandoned gold mine and surrounding areas are considered a priority gold target for drill testing in 2020.

GILBERTON GOLD PROJECT – North Queensland

(EPMs 18615, 18623, 19207, 26232 and 26307 – ActivEX 100%)

The Gilberton Gold Project is situated in the Georgetown Province in northeast Queensland, approximately 300km west-northwest of Townsville (Figure 2 & 3). The Project is in an area which is prospective for several metals (Au, Ag, Cu, Ta-Nb, Co) and a wide range of deposit styles (plutonic IRGS, porphyry breccia, and epizonal / epithermal IRGS). The world-class Kidston breccia hosted Au-Ag deposit occurs in similar geological terrain approximately 50km to the northeast. The Project consists of EPMs 18615 (Mt Hogan), 18623 (Gilberton), 19207 (Percy River), 26232 (Gum Flat) and 26307 (Split Rock). The Project comprises a total of 156 sub-blocks and encompasses an area of 508km² (Figure 3). ActivEX Limited holds 100% interest in all the tenements.

During the quarter field-based exploration activities were completed at the Gilberton Gold Project focusing on rock chip sampling in Mt Hogan open pit and other known mineral occurrences and workings (Figure 3 & 4).

Mt Hogan was the largest gold producer within the Gilberton Gold Project. Records of historic production date back to 1876-1877, when 2,256t of ore were crushed at the Mt Hogan battery and 106.9kg of bullion were produced. Most of this ore was probably won from scattered workings across the Mt Hogan hill. Mining recommenced in 1885 until 1910, and 341.22kg of bullion were produced from 7,016.8t of ore (average grade 48.6g/t Au). Most old workings at Mt Hogan are generally shallow, less than 10m deep, except for the Independence lode that occurs north from Mt Hogan mine, which was worked to about 40m inclined depth in the main shaft.

Gold mineralisation is concentrated around the south-eastern margin of the Mt Hogan Granite and consists of a set of stacked, shallow, southwest dipping (15-20°) quartz - sulphide veins. The veins are composed of medium grained, euhedral buck quartz crystals that have been brecciated and recrystallised by later movement of the vein's structures. Cores of the veins are often filled with sulphide. The lenticular veins are enveloped by an alteration halo of sericite (proximal), chlorite and epidote (distal) and appear to have developed in tensional openings produced by north-easterly thrusting. Continued movement along structures after vein formation has deformed and folded some veins. Individual veins reach up to 60cm in thickness but are generally thinner (10 – 20cm). Face sampling within Mt Hogan open pit returned assays to 40.5g/t Au and 138 g/t Ag (Figure 4 & 5).

Rock chip sampling was also completed at the Perryvale, Alcade and Limonite prospects which comprise numerous historical workings. The Limonite Prospect (historical production: 26.13kg of gold and 184.20kg of silver) which is located to the south-southwest of the Comstock mine and comprises of a group of workings and trenches. Siliceous breccia was noted on the dump near the north trench comprising angular to sub angular fragments of quartz/chert in a siliceous groundmass. The vein quartz with galena is up to 3m in width and occurs intermittently between the trenches and either side (Figure 6). The best assays from the Perryvale, Alcade and Limonite areas are 34.9g/t gold, 223 g/t silver and 22.6% lead (Figure 6).

The Gilberton Project has a very high crustal abundance of gold, similar to Kalgoorlie and Charters Towers, and therefore a fertile area for new large tonnage discoveries. Further exploration activities, such as pXRF surveys and focussed rock chip and conventional soil sampling, are being planned for the Mt Hogan, Gilberton and Split Rock EPMs with a view to a potential drill program at multiple targets within the Gilberton Gold Project in 2020.

Further exploration activities such as geological and structural mapping; focussed rock chip sampling; and conventional soil sampling will be undertaken at Mt Hogan, Gilberton, Percy River, Gum Flat and Split Rock EPMs (e.g. Gum Flat, Bernecker, Split Rock and Christmas Hill prospects) with a view delineating drilling targets at the Gilberton Gold Project for the 2020 field season.

The sample results mentioned are taken from ASX Announcement of 19 September 2019 – ‘Gilberton Gold Project – Exploration Results’.

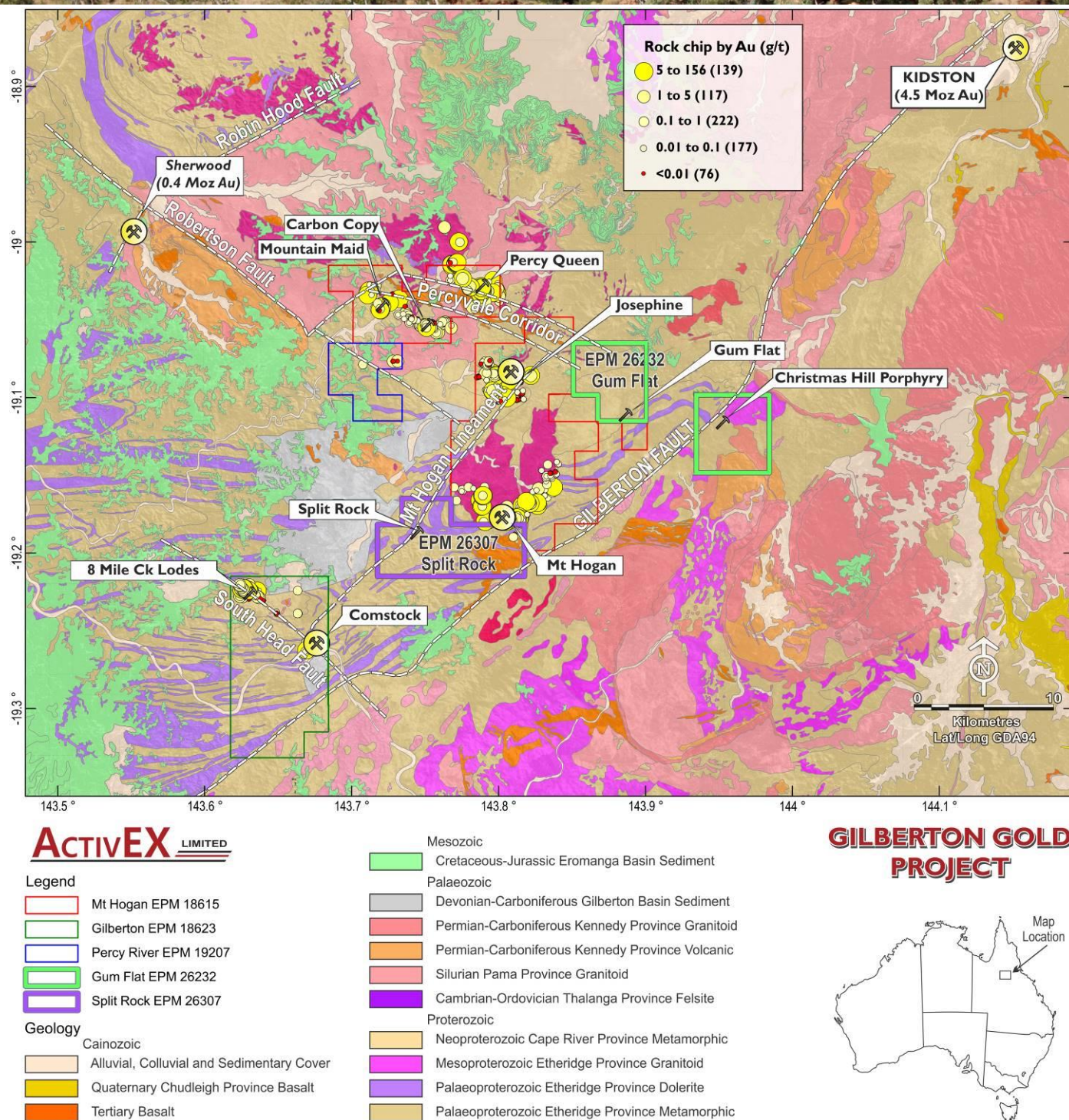


Figure 3. ActivEX Limited Gilberton Gold Project regional geology, tenements, prospect and rock chips thematically mapped by Au content.

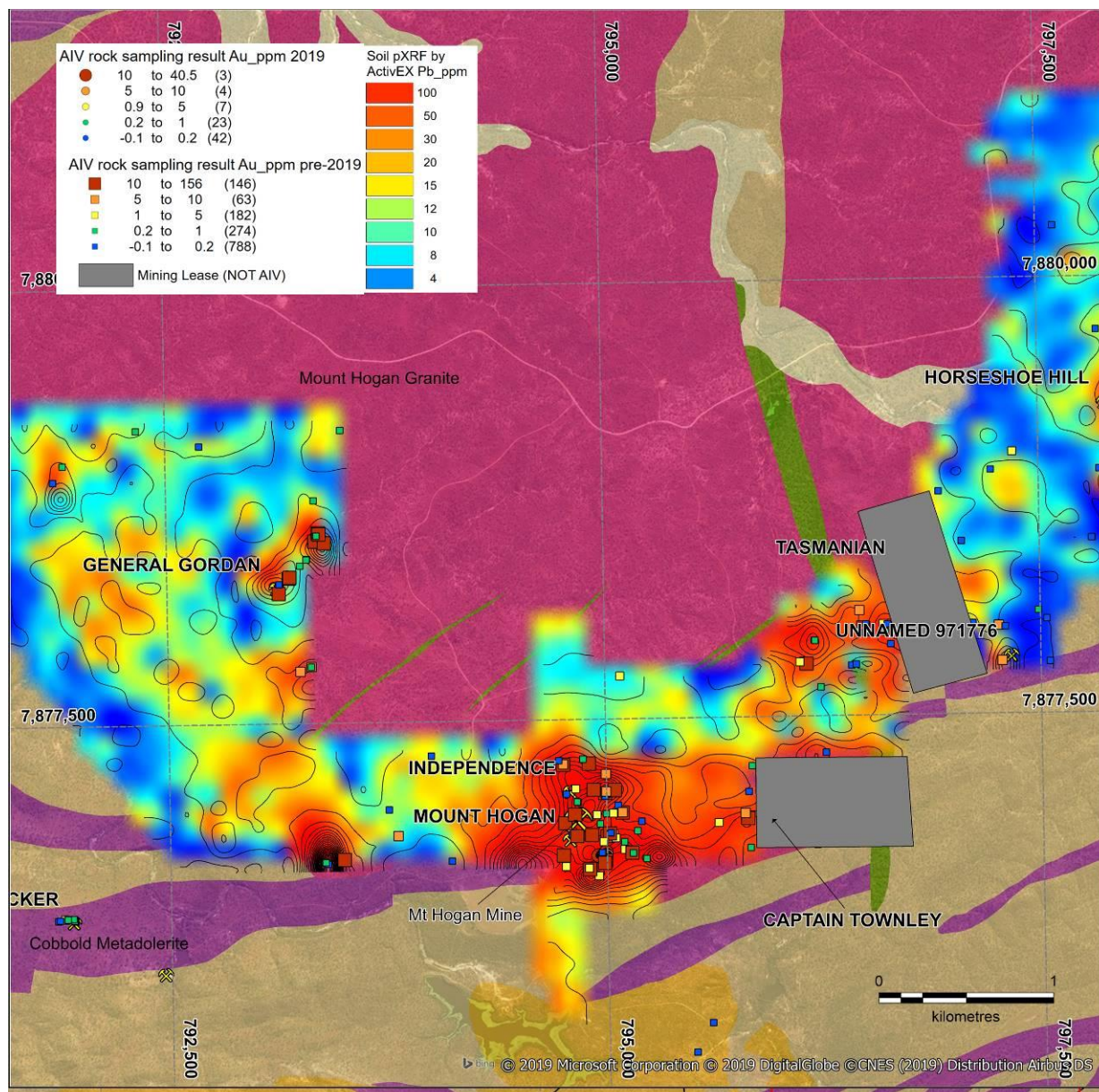
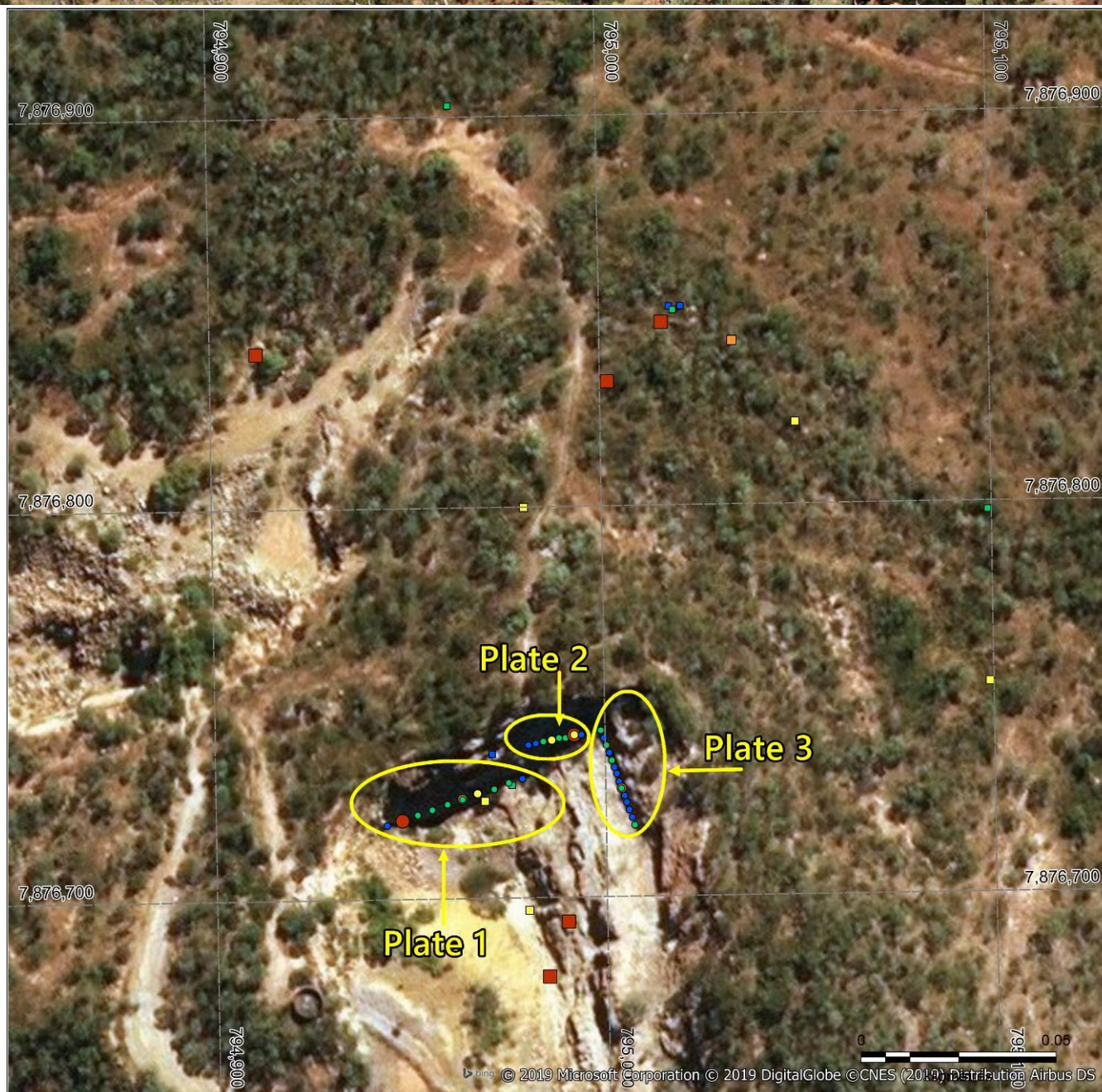


Figure 4. ActivEX Limited Mt Hogan Au in rock sampling assay results to 2019 and Pb in soils read by the companies pXRF instrument



AIV rock sampling result Au_ppm 2019

- 10 to 40.5 (3)
- 5 to 10 (4)
- 0.9 to 5 (7)
- 0.2 to 1 (23)
- -0.1 to 0.2 (42)

AIV rock sampling result Au_ppm pre-2019

- 10 to 156 (146)
- 5 to 10 (63)
- 1 to 5 (182)
- 0.2 to 1 (274)
- -0.1 to 0.2 (788)

■ Mining Lease (NOT AIV)

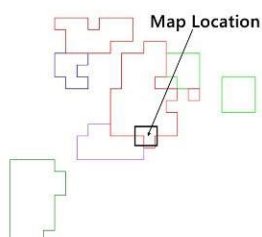
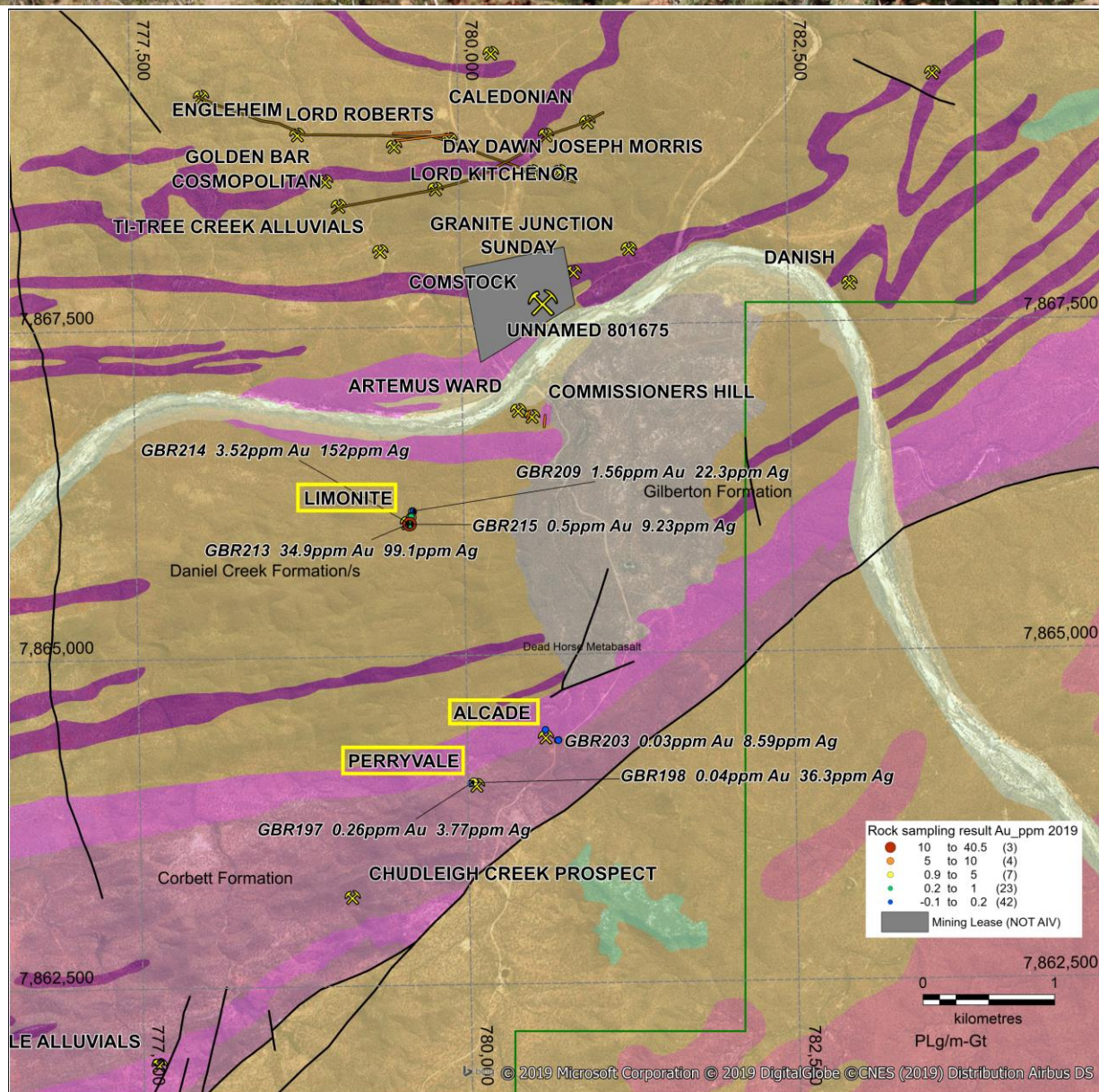


Figure 5 ActivEX Limited Mt Hogan Au in rock sampling assay results.



ActivEX LIMITED

Legend

- Mt Hogan EPM 18615
- Gilberton EPM 18623
- Percy River EPM 19207
- Gum Flat EPM 26232
- Split Rock EPM 26307

Geology

- Cainozoic
- Alluvial, Colluvial and Sedimentary Cover
- Quaternary Chudleigh Province Basalt
- Tertiary Basalt

- Mesozoic
- Cretaceous-Jurassic Eromanga Basin Sediment
- Palaeozoic
- Devonian-Carboniferous Gilberton Basin Sediment
- Permian-Carboniferous Kennedy Province Granitoid
- Permian-Carboniferous Kennedy Province Volcanic
- Silurian Pama Province Granitoid
- Cambrian-Ordovician Thlanga Province Felsite
- Proterozoic
- Neoproterozoic Cape River Province Metamorphic
- Mesoproterozoic Etheridge Province Granitoid
- Palaeoproterozoic Etheridge Province Dolerite
- Palaeoproterozoic Etheridge Province Metamorphic

GILBERTON GOLD PROJECT

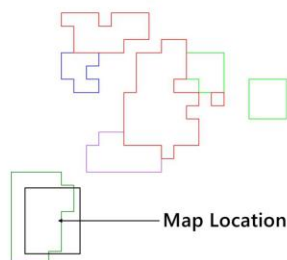


Figure 6 ActivEX Limited Limonite Alcade and Perryvale prospects rock sampling assay results.

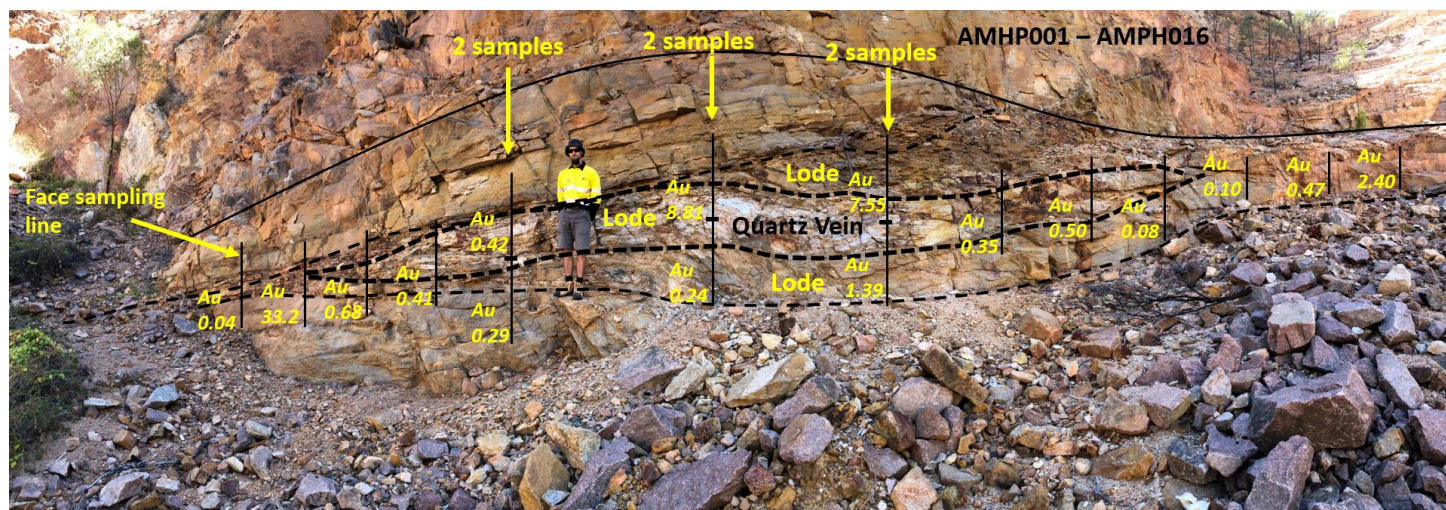


Plate 1. Photo of lode in north wall of the main Mt Hogan open cut. The shallow northerly plunge of structure is evident in the photo, sense of movement of thrust forming the lode of sheared and brecciated granite and opening up tension gashes filled with quartz and sulphides.

Facing NNW, black lines indicate samples location, Au assay results in g/t

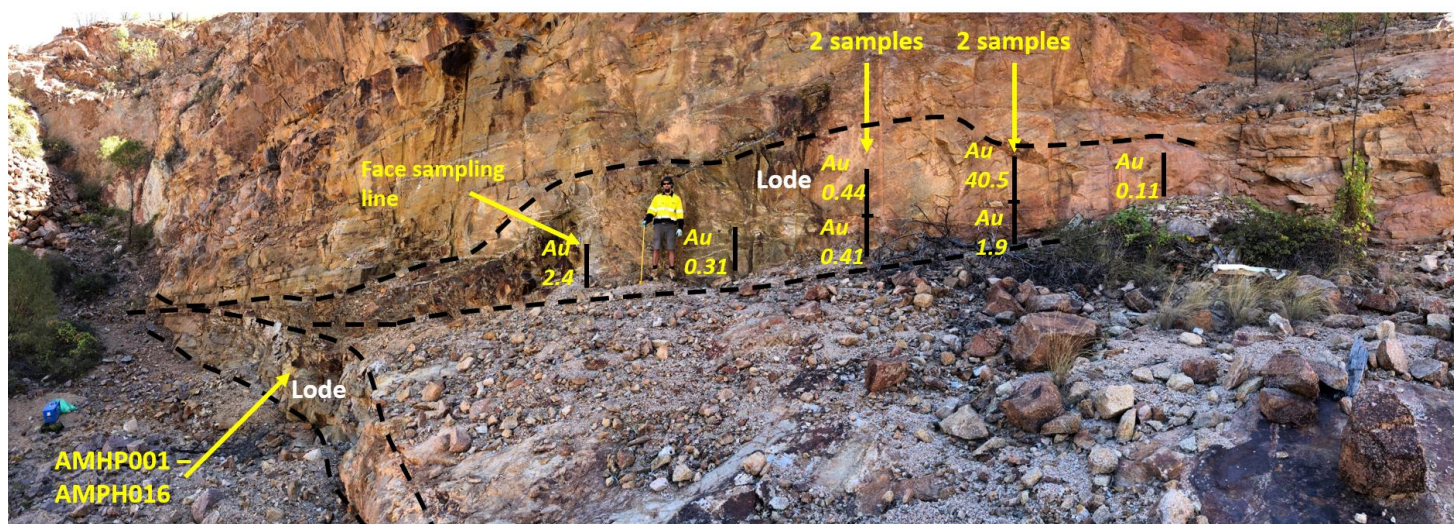


Plate 2. Photo of lode in north wall of the main Mt Hogan open cut. Facing NNW, black lines indicate samples location, Au assay results in g/t

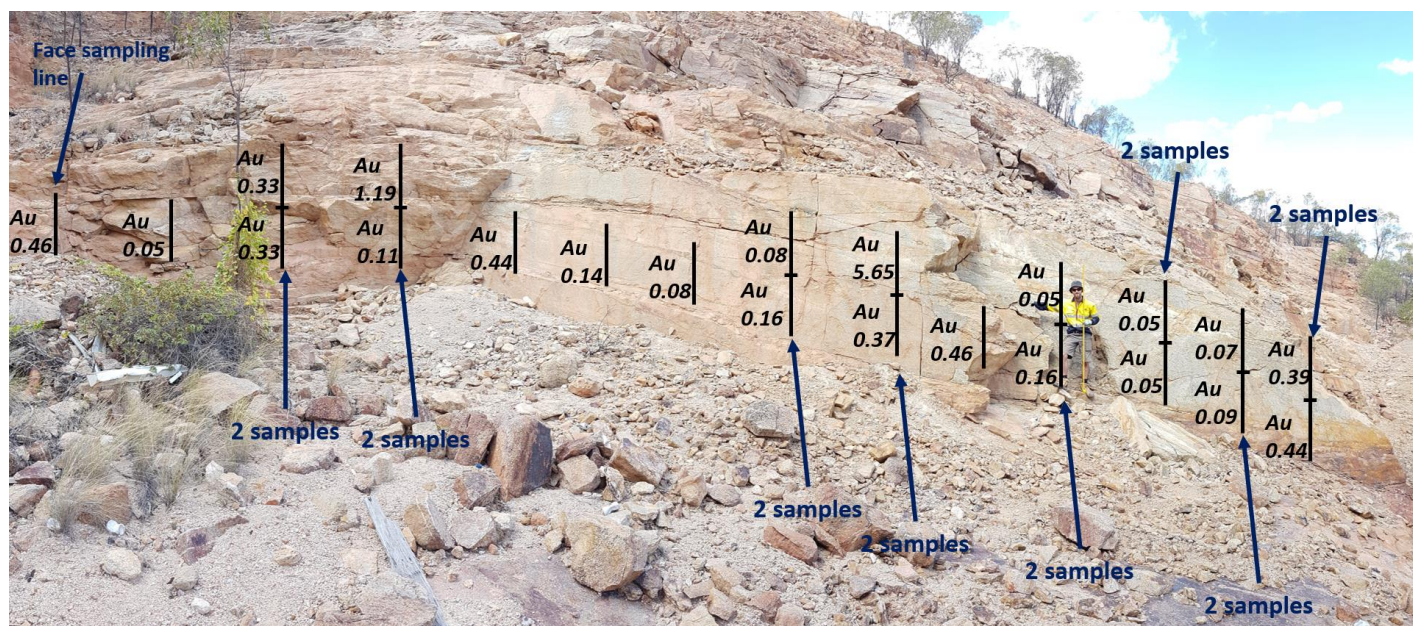


Plate 3. Photo wall of the main Mt Hogan open cut. Facing NEE, black lines indicate samples location, Au assay results in g/t

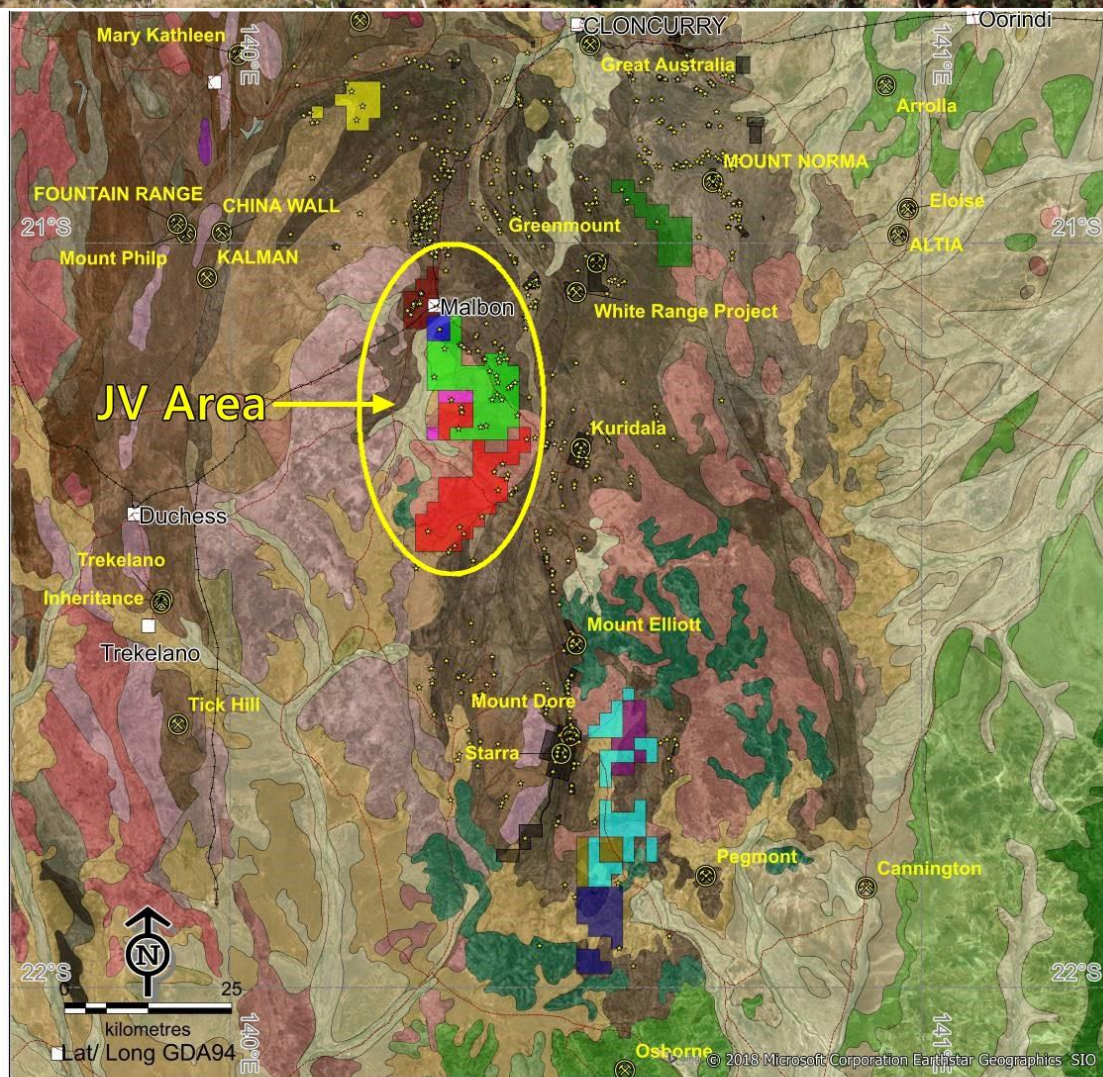
CLONCURRY COPPER AND GOLD PROJECT – Northwest Queensland

(EPMs 14955, 15285, 17313, 17805, 18053, 18073, 18511, 18852, 25192, 25454 and 25455 – ActivEX 100%)

The Cloncurry Copper and Gold Project is situated in northeast Queensland, approximately 60km south of Cloncurry (Figure 2 & 3). The Project consists of EPMs 14955, 15285, 17313, 17805, 18053, 18073, 18511, 18852, 25192, 25454 and 25455, which comprise a total of 222 sub-blocks and encompasses an area of 710km². ActivEX Limited holds 100% interest in all the tenements.

The Project is situated within the Eastern Succession of the Mount Isa Inlier, which is a highly prospective geological terrane containing numerous major deposits (Figure 7). These include Iron Oxide Copper Gold, skarn style Cu-Au, and Merlin-style Mo deposits.

Field-based exploration activities are continuing in the Cloncurry Copper and Gold Project focusing on detailed geophysical surveys, rock chip sampling and geological mapping (Figure 8) with the aim to delineate drilling targets.



ActivEX LIMITED

ActivEX Tenement

■	Mt Agate EPM 14955
■	Florence Creek EPM 15285
■	Malbon EPM 17313
■	Florence Flat EPM 17805
■	Bulonga EPM 18053
■	Selwyn East EPM 18073
■	Brightlands EPM 18511
■	Robour EPM 18852
■	Concorde EPM 25192
■	Heathrow EPM 25454
■	North Camel Dan EPM 25455

- Town
- Railway
- Road
- Major deposit
- ★ Mineral occurrence/ working
- Mining Lease (NOT AIV)

Geology

	QUATERNARY ALLUVIUM
	TERTIARY SEDIMENTARY ROCK
	EARLY CRETACEOUS MUDROCK
	LATE JURASSIC - EARLY CRETACEOUS ARENITE
	LATE CAMBRIAN - EARLY ORDOVICIAN MIXED SILICICLASTIC/CARBONATE ROCKS
	MESOPROTEROZOIC GRANITOID
	PALEOPROTEROZOIC MIXED METAMORPHOSED FELSITES & SEDIMENTARY ROCKS

CLONCURRY PROJECT

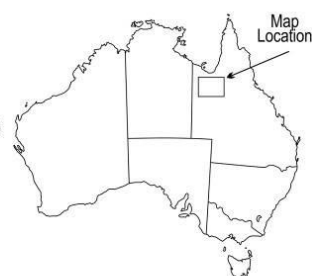


Figure 7. ActivEX Limited Cloncurry Copper and Gold Project regional geology, tenements and prospects.

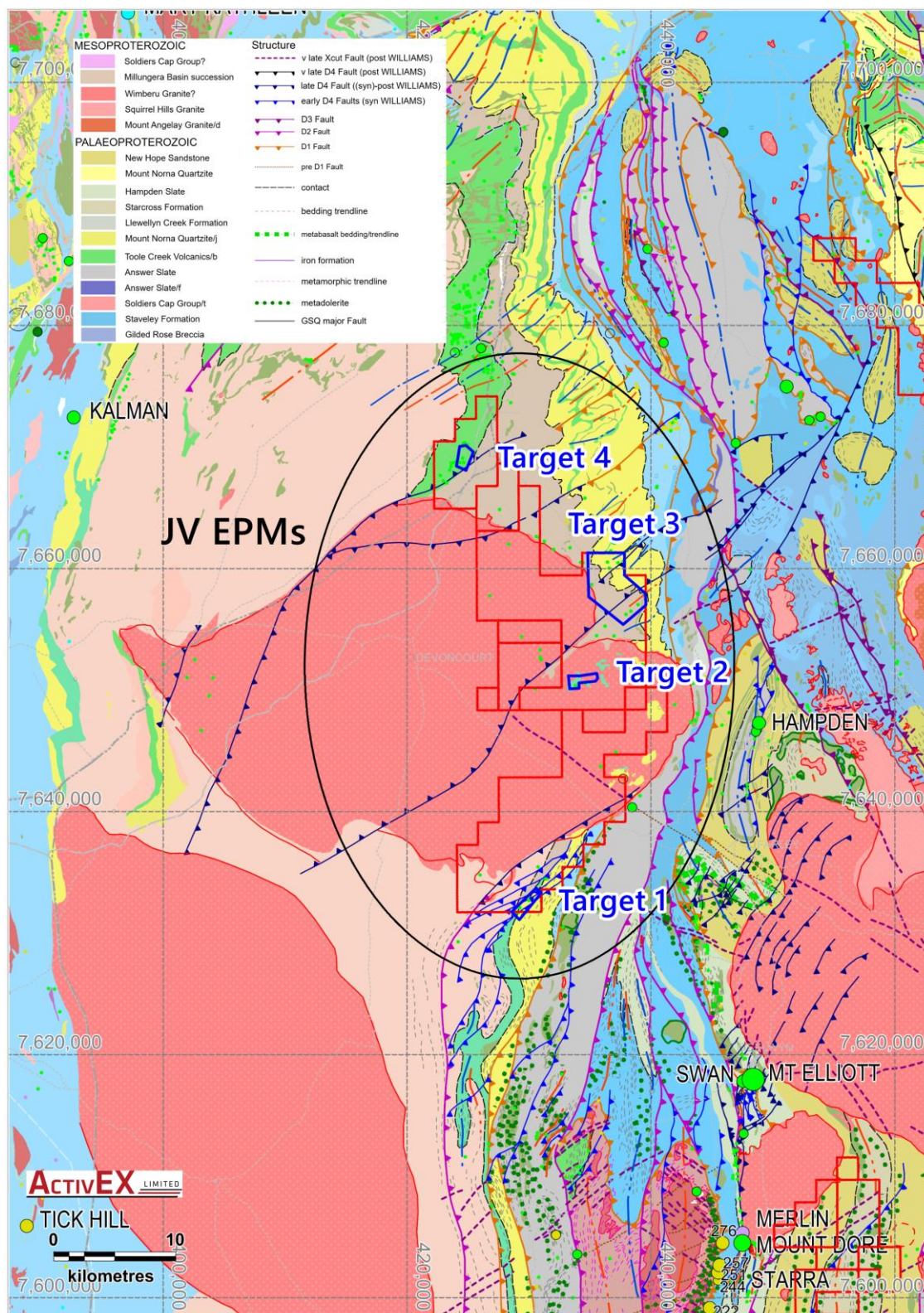


Figure 8. Cloncurry Project JV EPMs and selected targets on regional geology.

BARAMBAH GOLD PROJECT – Southeast Queensland**(EPMs 14937 and 18732 – ActivEX 100%)**

The Barambah Gold Project is located in south-east Queensland between the towns of Gayndah and Goomeri, 215 kilometres due north-west of Brisbane (Figure 2 & 9). The project tenure comprises EPMs 14937(Barambah) and 18732 (One Mile) for a total of 25 sub-blocks and encompass an area of 77 km² (Figure 9).

The Barambah deposit consists of several gold and silver mineralised veins hosted by the Aranbanga Volcanic Group which consist of a number of polymictic to monomictic pyroclastic breccias, rhyolitic lapilli-ash tuff and rhyolitic airfall lapilli-ash tuff and lesser intrusive andesite (Figure 9 & 10). The veins are cut by quartz-feldspar phyric rhyolitic dykes, particularly to the north of historic mining. Field observations, age relationships and regional geological dating, suggest an approximate age of $\sim 220 \pm 5$ Ma for the deposit.

To date drill testing has been confined along strike of the Barambah open pit with the delineation of a maiden JORC Resource by the Company in 2015. The Aranbanga Volcanic Group is host to numerous auriferous epithermal quartz vein systems and deeper CSAMT targets along the main Barambah trend which to date remain partially tested by drilling. The Company is reviewing funding options for a drill focussed exploration program to grow the current gold resource base at the Barambah Gold Project.

ESK COPPER AND GOLD PROJECT – Southeast Queensland**(EPMs 14476, 14979, 16265 and 16327 – ActivEX 100%)**

The Esk Copper and Gold Project consists of tenements 14476 (One Mile), 14979 (Dadamarine), 16265 (Blairmore), 16327 (Ban Ban), which comprises a total 53 sub-blocks and encompass an area of 164 km² (Figure 2 & 9). ActivEX Limited holds 100% interest in all tenements. The Project is located in the New England Orogen in southeast Queensland between the towns of Gayndah and Goomeri, 215 km due northwest of Brisbane (Figure 2). The prospects are situated at the intersection of the NNW trending Perry Fault zone (host to Mt Rawdon +2Moz gold deposit) and NE trending (Darling Lineament related) structures.

The Esk Copper and Gold project is host to mineralisation with similarities to many High-K Calcalkalic to Alkalic Porphyry copper-gold deposits, near surface supergene copper deposits, as well as potential for breccia-pipe hosted gold-copper deposits.

COALSTOUN LAKES COPPER AND GOLD PROJECT – Southeast Queensland**(EPM 14079 – ActivEX 100%)**

The Coalstoun Lakes Copper and Gold Project consists of tenement EPM 14079, which comprises 50 sub-blocks and encompass an area of 160 km² (Figure 2). The Project is located in the New England Orogen in southeast Queensland between the towns of Gayndah and Goomeri, 215 km due northwest of Brisbane (Figure 2 & 9). ActivEX Limited holds 100% interest in the tenement. The Coalstoun Lakes Copper and Gold Project is situated at the intersection of the NNW trending Perry Fault zone (host to Mt Rawdon +2Moz gold deposit) and NE trending (Darling Lineament related) structures.

The Coalstoun Lakes Copper and Gold Project is host to mineralisation with similarities to many High-K Calc-alkalic to Alkalic Porphyry copper-gold deposits, near surface supergene copper deposits, as well as potential for breccia-pipe hosted gold-copper deposits.

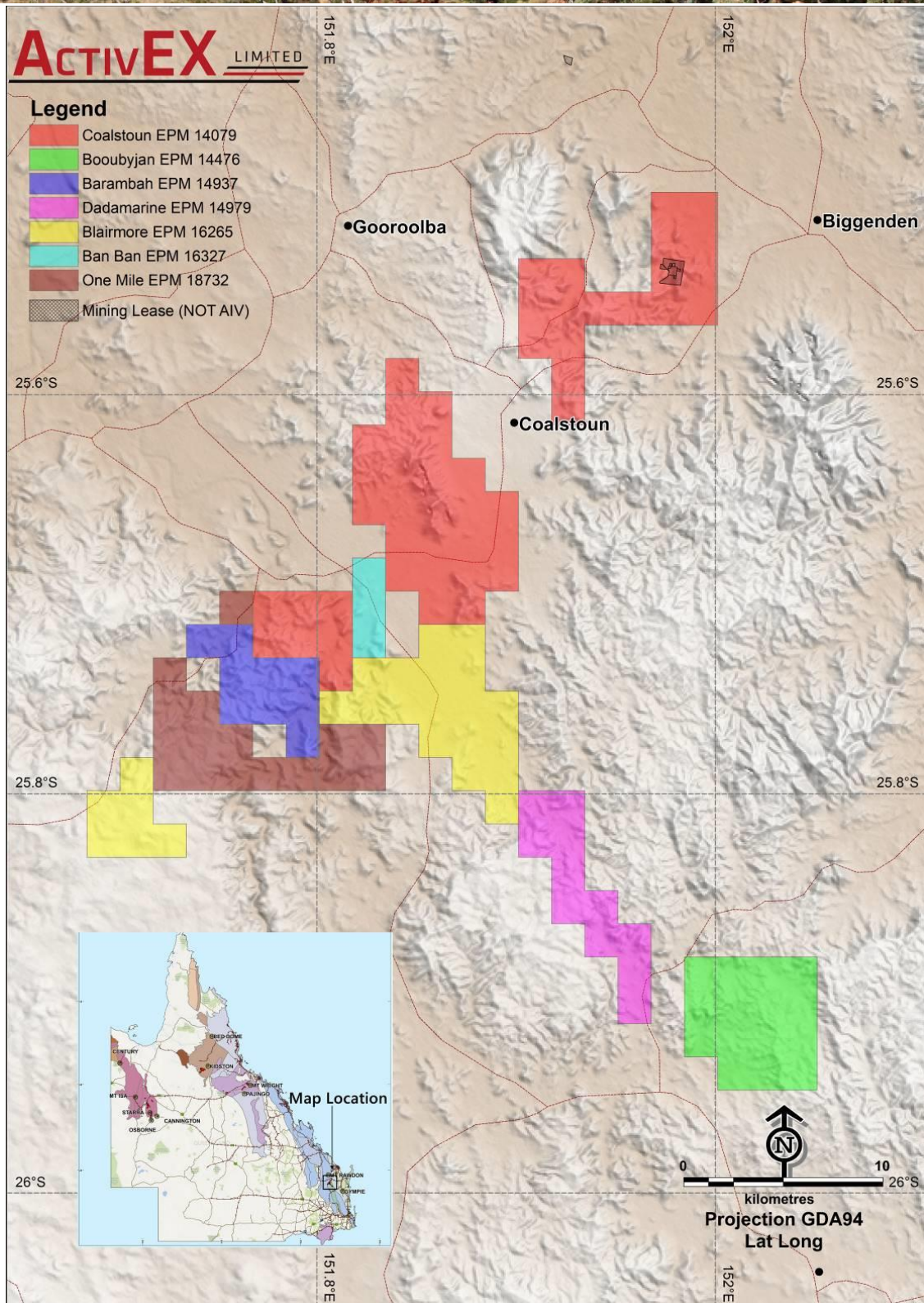


Figure 9. ActivEX Limited South-east Queensland Projects and Tenements location.

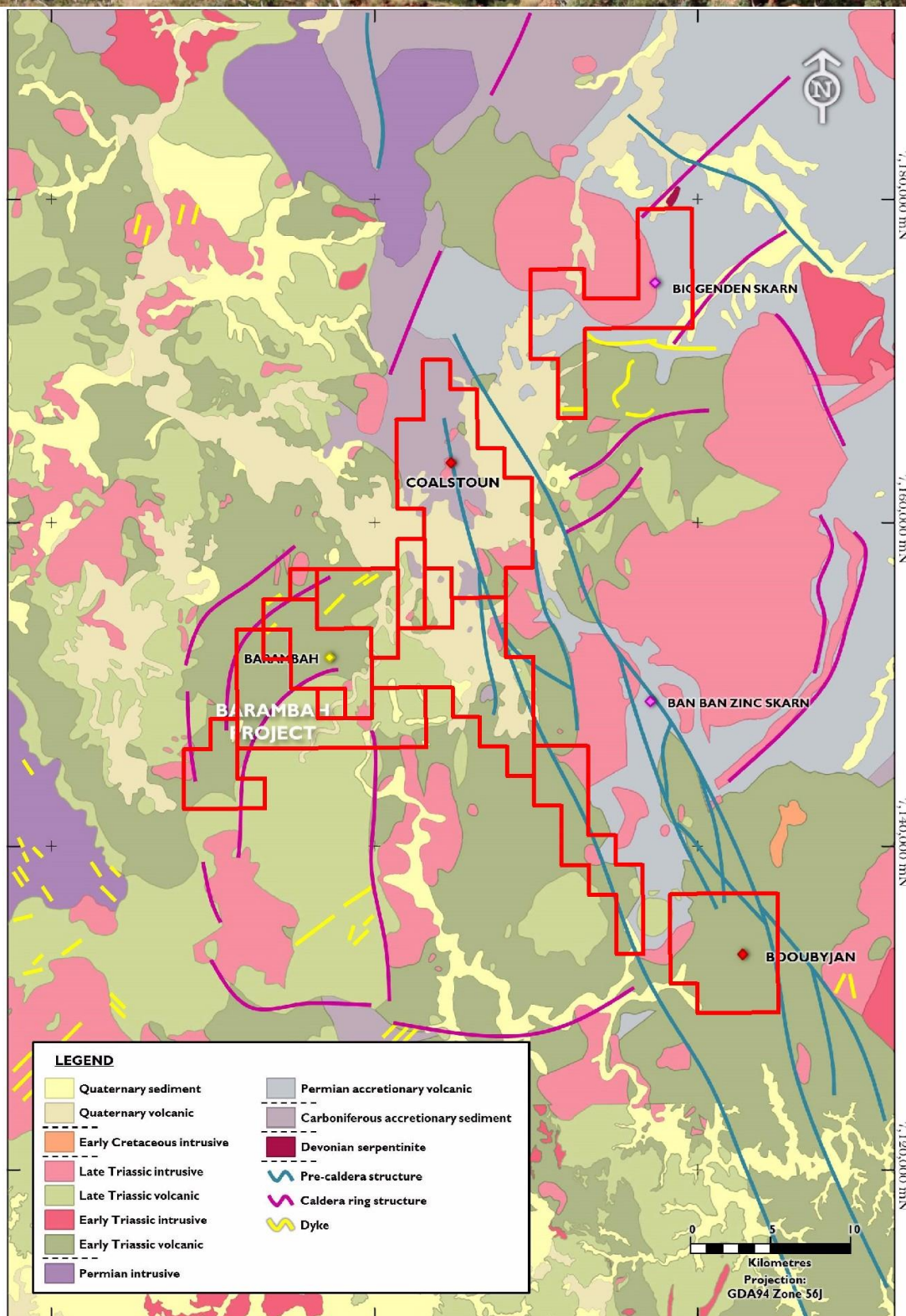


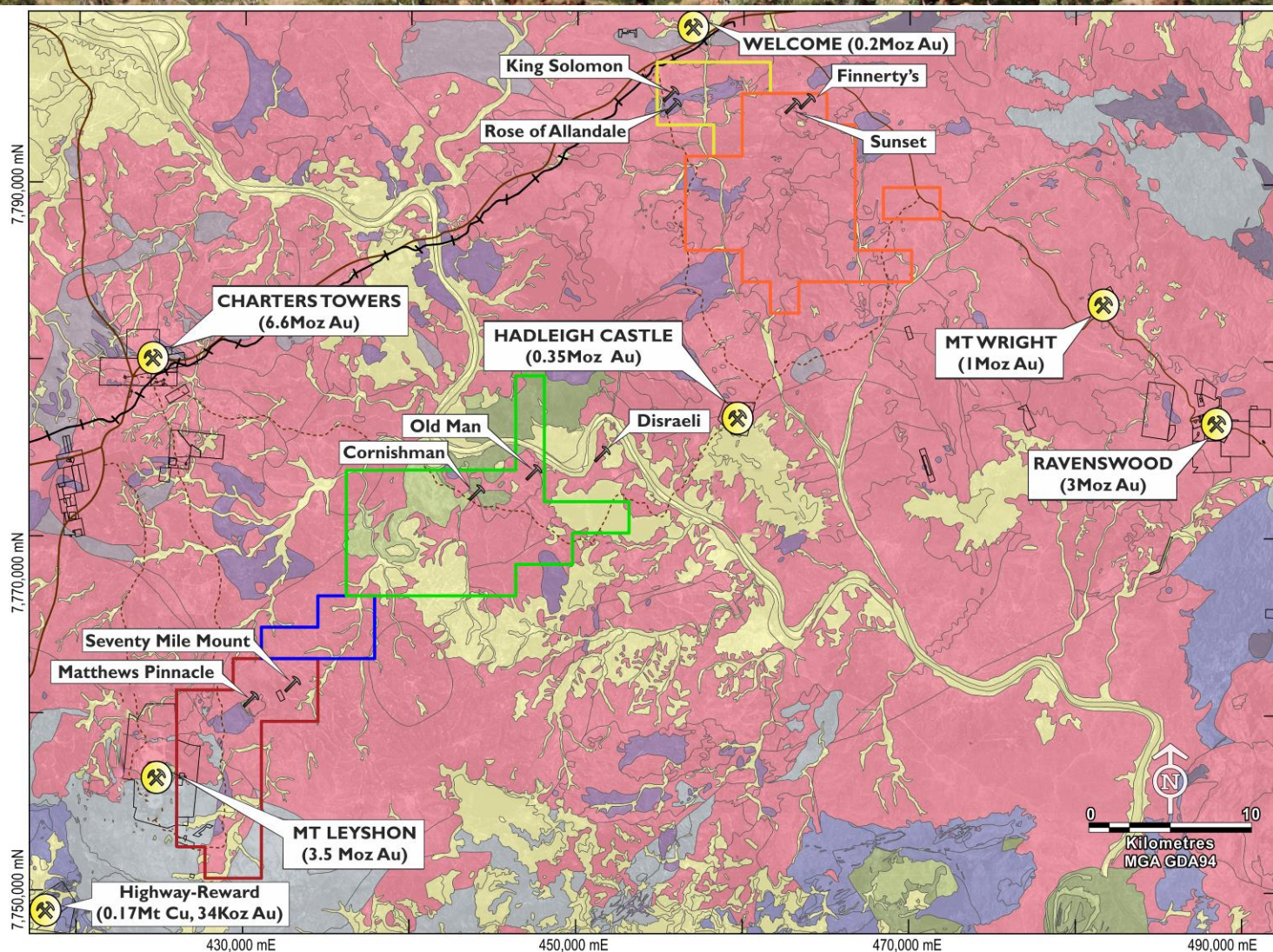
Figure 10. ActivEX Limited South-east Queensland Projects and Tenements regional geology.

RAVENSWOOD GOLD PROJECT – North Queensland

(EPMs 18424, 18426, 18637, 25466 and 25467 – ActivEX 100%)

The Ravenswood Gold Project is situated in the Charters Towers Province in northeast Queensland, approximately 60km south of Charters Towers (Figure 2 & 11). The Project consists of EPMs 18424, 18637, 18426, 25466 and 25467, which comprise a total of 104 sub-blocks and encompass an area of 335km². ActivEX Limited holds 100% interest in all the tenements (Figure 11).

The Project is located in the highly prospective Charters Towers – Ravenswood region which has produced over 12Moz of Au including 6.6Moz at Charters Towers, 3.5Moz at Mount Leyshon as well as 1Moz at Mount Wright Au in addition the current nearby Ravenswood mining operation with a global resource of 4.3Moz. Mineralisation styles in the district include mesothermal gold veins (e.g. Charters Towers and Ravenswood Goldfields), breccia hosted gold (e.g. Mount Leyshon, Welcome Breccia) and epithermal gold veins (e.g. the Pajingo group).



ActivEX LIMITED

Legend

- Mt Leyshon EPM 18424
- Cornishman EPM 18426
- King Solomon EPM 18637
- Charlie Creek EPM 25466
- Birthday Hills EPM 25467
- Mining Lease (not ActivEX Ltd)
- Road
- Access Track
- Railway

Geology

- Cainozoic
- Alluvial, Colluvial and Sedimentary Cover
- Palaeozoic
- Carboniferous-Permian Granitoid
- Carboniferous-Permian Volcanic
- Devonian Sediment
- Ordovician Volcanic
- Palaeozoic Felsic Granitoid
- Palaeozoic Mafic Granitoid
- Cambrian Volcanic

RAVENSWOOD GOLD PROJECT



Figure 11. ActivEX Limited Ravenswood Gold Project tenement and prospect locations.

PENTLAND GOLD PROJECT – North Queensland**(EPM 14332 – ActivEX 100%,**

The Pentland Gold Project consists of tenement EPM 14332 (Pentland), which comprises a total of 39 sub-blocks and encompass an area of 125km² (Figure 2 & 12). The Project is located in the Charters Towers district of northern Queensland. The township of Pentland is located within the tenement area, in the southeast of EPM 14332. The project contains 4 established prospects where ActivEX has carried out extensive ground-based surveys and these areas are drill-ready with a number of targets already identified. Outside of these areas, the project package is only lightly explored and significant potential remains.

The Pentland tenement encompasses much of the Cape River Gold and Mineral Field. Alluvial, deep lead and primary gold were discovered along the Cape River in 1867. Recorded production from the field was around 45,000 ounces (approximately 1400kg), but true production was considerably more as there is no record of the amount extracted by the Chinese miners, who were almost as numerous as Europeans during the productive years of the field in the late 1800's. Several areas within the Exploration Permit have seen small scale mining since that time. The Pentland tenements cover an area in which a wide variety of mineralisation styles have been identified and worked in part, including quartz vein gold, alluvial, elluvial and deep lead gold, shear zone hosted gold, epithermal and porphyry-related gold, porphyry-related copper-molybdenum, and shear-breccia zone hosted Pb-Cu-Au.

Gold, copper and molybdenum mineralisation is hosted in breccia zones containing diorite fragments in a vuggy quartz-sulphide matrix and steeply dipping, vuggy quartz-galena-sphalerite veins. There are many mineral occurrences in the tenement with four prospects currently under investigation at various stages in the exploration process.

A Farm-in & Joint Venture agreement (JV) has been finalised with unlisted company Rockland Resources Pty Ltd (ACN 601 029 529) (Rockland) over the Company's 100% owned Pentland gold tenement located in North-east Queensland, approximately 100km west of Charters Towers. The tenement is located in the highly mineralised Cape River Province.

During this quarter, Rockland flew a 50m line spaced airborne magnetic/radiometric survey (totalling 3,374 line km) over the entire tenement. Preliminary processing has been completed (Figure 13) and further results will be released as they are completed.

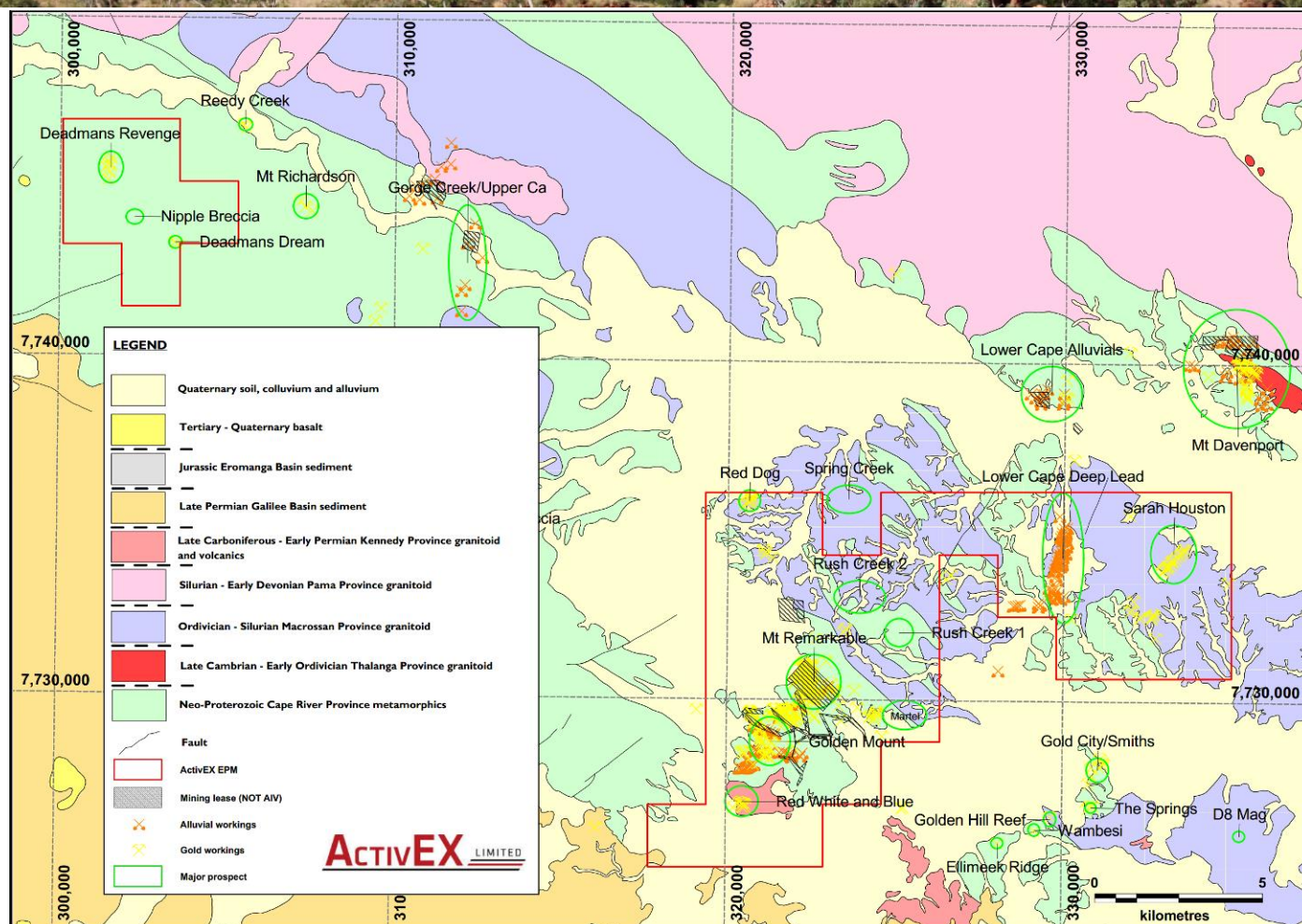


Figure 12. ActivEX Limited Pentland Gold Project regional geology

For further information contact:
Mr Mark Derriman, Executive Director
or Mr Craig McPherson, Company Secretary

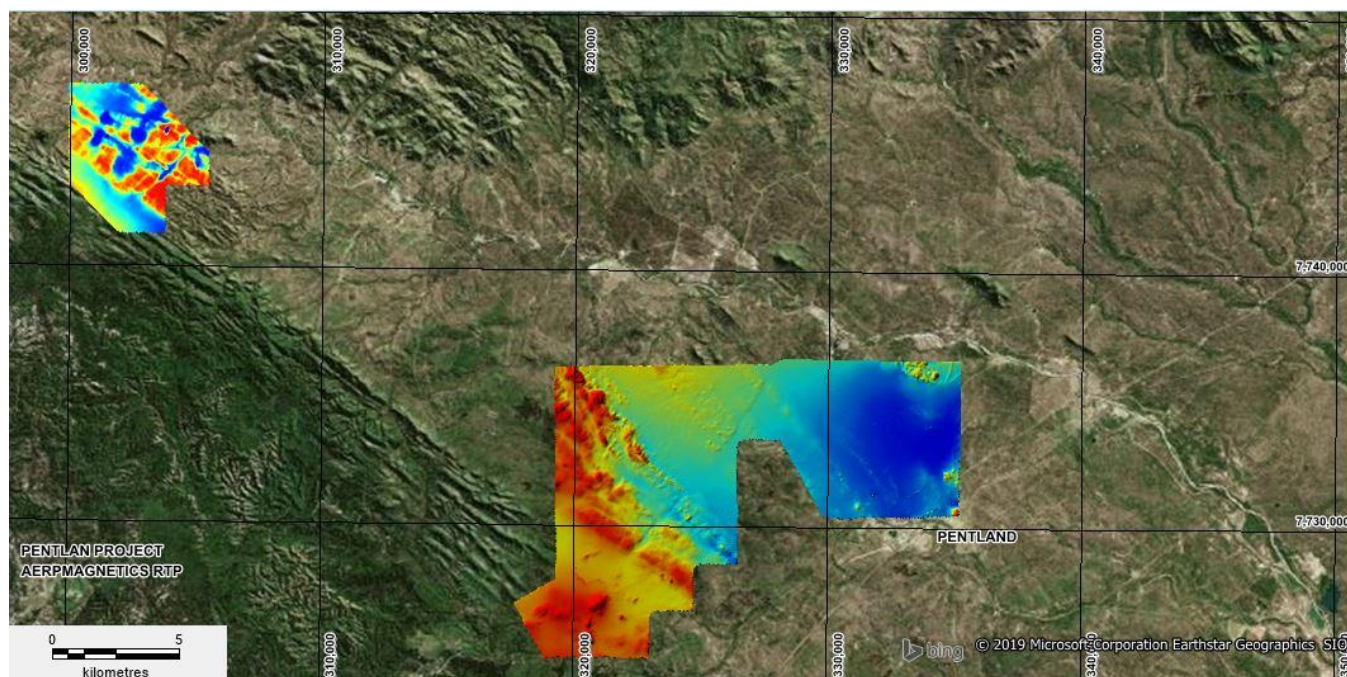


Figure 13. ActivEX Limited Pentland Gold Project airborne geophysical survey - preliminary RTP magnetics

Appendix 1

Declarations under 2012 JORC Code and JORC Tables

The information in this report which relates to Exploration Results is based on information reviewed by Mr. Mark Derriman, who is a member of The Australian Institute of Geoscientists (1566) and Mr. Xusheng Ke, who is a Member of the Australasian Institute of Mining and Metallurgy (310766) and a Member of the Australian Institute of Geoscientists (6297).

Mr. Mark Derriman and Mr. Xusheng Ke have sufficient experience that is relevant to the style of mineralisation and type of deposit under consideration and to the activities which he is undertaking to qualify as a Competent Person as defined in the 2012 Edition of the Australasian Code for Reporting of Exploration Results, Mineral Resources and Ore Reserves.

Mr. Mark Derriman and Mr. Xusheng Ke consent to the inclusion of his name in this report and to the issue of this report in the form and context in which it appears.

Previous Disclosure - 2012 JORC Code

Information relating to Mineral Resources, Exploration Targets and Exploration Data associated with previous disclosures relating to the Gilberton Gold Project in this announcement has been extracted from the following ASX Announcements:

- ASX announcement titled "Gilberton Gold Project – Exploration Results" dated 19 September 2019.

Copies of reports are available to view on the ActivEX Limited website www.activex.com.au. These reports were issued in accordance with the 2012 Edition of the JORC Australasian Code for Reporting of Exploration Results, Mineral Resources and Ore Reserves. The Company confirms that it is not aware of any new information or data that materially affects the information included in the original market announcements. The Company confirms that the form and context in which the Competent Person's findings are presented have not been materially modified from the original market announcement.

Appendix 2 LICENCES STATUS

Pursuant to ASX Listing Rule 5.4.3 the Company reports as follows in relation to minerals tenements held at the end of the September 2019 quarter and acquired or disposed of during that quarter and their locations. There was no change in beneficial interests under farm-in or farm-out agreements.

Project Name	Tenement Name	EPM	Status	Granted	Expires	Holder	Details	Interest at start of quarter	Interest at end of quarter	Sub-blocks at start of quarter	Sub-blocks at end of quarter
Southeast Queensland											
Barambah Gold	Barambah	14937	Granted	14-Mar-05	13-Mar-22	ActivEX Limited		100%	100%	9	9
	One Mile	18732	Granted	15-Oct-10	14-Oct-20	ActivEX Limited		100%	100%	16	16
Esk Copper and Gold	Boobyjan	14476	Granted	08-Jun-04	07-Jun-22	ActivEX Limited		100%	100%	15	15
	Dadamarine	14979	Granted	12-Apr-05	11-Apr-20	ActivEX Limited		100%	100%	11	11
	Blairmore	16265	Granted	04-Sep-07	03-Sep-22	ActivEX Limited		100%	100%	24	24
	Ban Ban	16327	Granted	31-Jul-07	30-Jul-22	ActivEX Limited		100%	100%	3	3
Coalstoun Lakes Copper and Gold	Coalstoun	14079	Granted	23-Oct-03	22-Oct-20	ActivEX Limited		100%	100%	50	50
Northwest Queensland											
Cloncurry Copper and Gold	Mt Agate	14955	Granted	29-Jun-06	28-Jun-21	ActivEX Limited		100%	100%	50	50
	Florence Creek	15285	Granted	30-Oct-07	29-Oct-22	ActivEX Limited		100%	100%	43	43
	Malbon	17313	Granted	24-May-10	23-May-21	ActivEX Limited		100%	100%	5	5
	Florence Flat	17805	Granted	21-Apr-11	20-Apr-21	ActivEX Limited		100%	100%	4	4
	Brightlands	18511	Granted	30-Apr-12	29-Apr-22	ActivEX Limited		100%	100%	11	11
	Selwyn East	18073	Granted	19-Sep-11	18-Sep-21	ActivEX Limited		100%	100%	36	36
	Concorde	25192	Granted	16-Dec-14	15-Dec-19	ActivEX Limited	Renewal Lodged	100%	100%	21	21
	Heathrow East	25454	Granted	24-Dec-14	23-Dec-19	ActivEX Limited	Renewal Lodged	100%	100%	11	11
	North Camel Dam	25455	Granted	01-May-15	30-Apr-20	ActivEX Limited		100%	100%	8	8
	Robur	18852	Granted	10-Aug-12	09-Aug-22	ActivEX Limited		100%	100%	20	20
	Bulonga	18053	Granted	27-Apr-12	26-Apr-22	ActivEX Limited		100%	100%	13	13
North Queensland											
Gilberton Gold	Percy River	19207	Granted	13-Dec-12	12-Dec-22	ActivEX Limited		100%	100%	7	7
	Mt Hogan	18615	Granted	19-Jun-13	18-Jun-23	ActivEX Limited		100%	100%	89	89
	Gilberton	18623	Granted	08-Apr-14	07-Apr-24	ActivEX Limited		100%	100%	29	29
	Gum Flat	26232	Granted	02-Feb-17	01-Feb-22	ActivEX Limited		100%	100%	17	17
	Split Rock	26307	Granted	06-Mar-17	05-Mar-22	ActivEX Limited		100%	100%	14	14
Pentland Gold	Pentland	14332	Granted	10-Dec-04	09-Dec-19	ActivEX Limited	Renewal Lodged	100%	100%	39	39
Ravenswood Gold	Mt Leyshon	18424	Granted	08-May-12	07-May-22	ActivEX Limited		100%	100%	22	22
	King Solomon	18637	Granted	17-Aug-12	16-Aug-22	ActivEX Limited		100%	100%	8	8
	Cornishman	18426	Granted	16-Dec-14	15-Dec-19	ActivEX Limited	Renewal Lodged	100%	100%	34	34
	Charlie Creek	25466	Granted	14-Oct-14	13-Oct-21	ActivEX Limited		100%	100%	6	3
	Birthday Hills	25467	Granted	19-Mar-15	18-Mar-20	ActivEX Limited		100%	100%	34	34
Western Australia											
Lake Chandler Potash	Lake Chandler	M77/22	Granted	17-Jan-85	16-Jan-27	ActivEX Limited		100%	100%	359 ha	359 ha