



ASX RELEASE

2 March 2020

LORRAINE MINE GOLD PROJECT – SCOPE OF WORKS UPDATE

Summary

- Orix Geoscience Canada (Orix) was commissioned to complete the Scope of Works (SOW) for the Lorraine Mine Gold Project which included the compilation of all historic mine data (1964 – 1968) and digitization of all associated drilling;
 - Orix's interrogation to date has resulted in the accurate location of the high-grade channel sampled intervals on the 6-Level - 601W drift, namely:
 - **28m at 45.24g/t Au, 41g/t Ag and 3.19% Cu; and,**
 - **9.4m @ 14.12g/t Au, 22g/t Ag and 3.16% Cu**
 - The collar location of underground hole 6-U-76 which intersected **1m @ 53.47 g/t Au and 12g/t Ag** has been confirmed and importantly places the mineralised intercept **approximately 12m below the 6-Level 28m channel sample** highlighted above;
 - The start date for diamond drilling based on the data being compiled by Orix has been set to follow the Alotta Project drilling which is set to commence in the week of 18 May 2020 subject to weather and access constraints; and,
 - Leon Pretorius is currently attending the Internationally acclaimed PDAC conference in Toronto and will be spending time with Orix to finalise the SOW and the critical targeting phase of the drilling programme.
-

Chase Mining Corporation Limited ("CML" or "The Company") provides the following update on its planned Lorraine Mine Gold Project deep diamond drill programme targeting the gold (plus silver and copper) mineralisation reported from historic sampling and limited drilling associated with the 6-Level development of the Lorraine Nickel Mine in southeast Quebec.

This update is based on evaluation and interpretation of historic data completed to date by the Company's Canadian consultants Orix Geoscience (Orix). This forms part of the Scope of Works (SOW) commissioned by the Company as outlined in the ASX Announcement dated 21 January 2020.

It is an excellent outcome given the Orix desktop studies have now accurately confirmed the locations of the previously reported highgrade gold (plus copper and silver) underground channel and drill hole sample locations on sections as discussed and displayed below.



CHASE MINING CORPORATION LIMITED

ABN 12 118 788 846

Level 8, 46 Edward Street, Brisbane QLD 4000

PO Box 15505, City East QLD 4002

0439 310 818 | 0419 702 616

<https://www.chasemining.com.au>



Lorraine Mine Gold Potential Evaluation Programme

Stope development at the mine was put on hold during 1966 due to a drop in metal prices and the Levels 3 and 4 ore becoming poor in nickel and richer in copper. Development work however continued on the 5 and 6 Levels to provide drill access to the ESE plunging ore zone. Gold mineralisation was reported in the 5 and 6 Level drift development during this time. Only gold assay data from the 6 Level is currently available to the Company as highlighted above and shown in **Figures 1 to 3**.

Interrogation of the historic Lorraine mining and drilling database by Orix has resulted in the accurate location of the high-grade gold mineralisation in channel sampled intervals on the 6-Level - 601W drift (~300m VD) associated with quartz-chalcopyrite veining along the footwall sheared diorite-gabbro / intermediate volcanic contact zone, namely:

- **28m at 45.24g/t Au, 41g/t Ag and 3.19% Cu*** on the 601 W; and,
- **9.4m @ 14.12g/t Au, 22g/t Ag and 3.16%Cu** on the 601 W drift.

In addition, the collar location of underground hole U-6-76 which returned an intersection of **1m @ 53.47g/t Au and 12g/t Ag** was confirmed on the 601 S crosscut. Importantly it places the intersection approximately 12m below the 28m channel sample as shown in **Figure 3**.

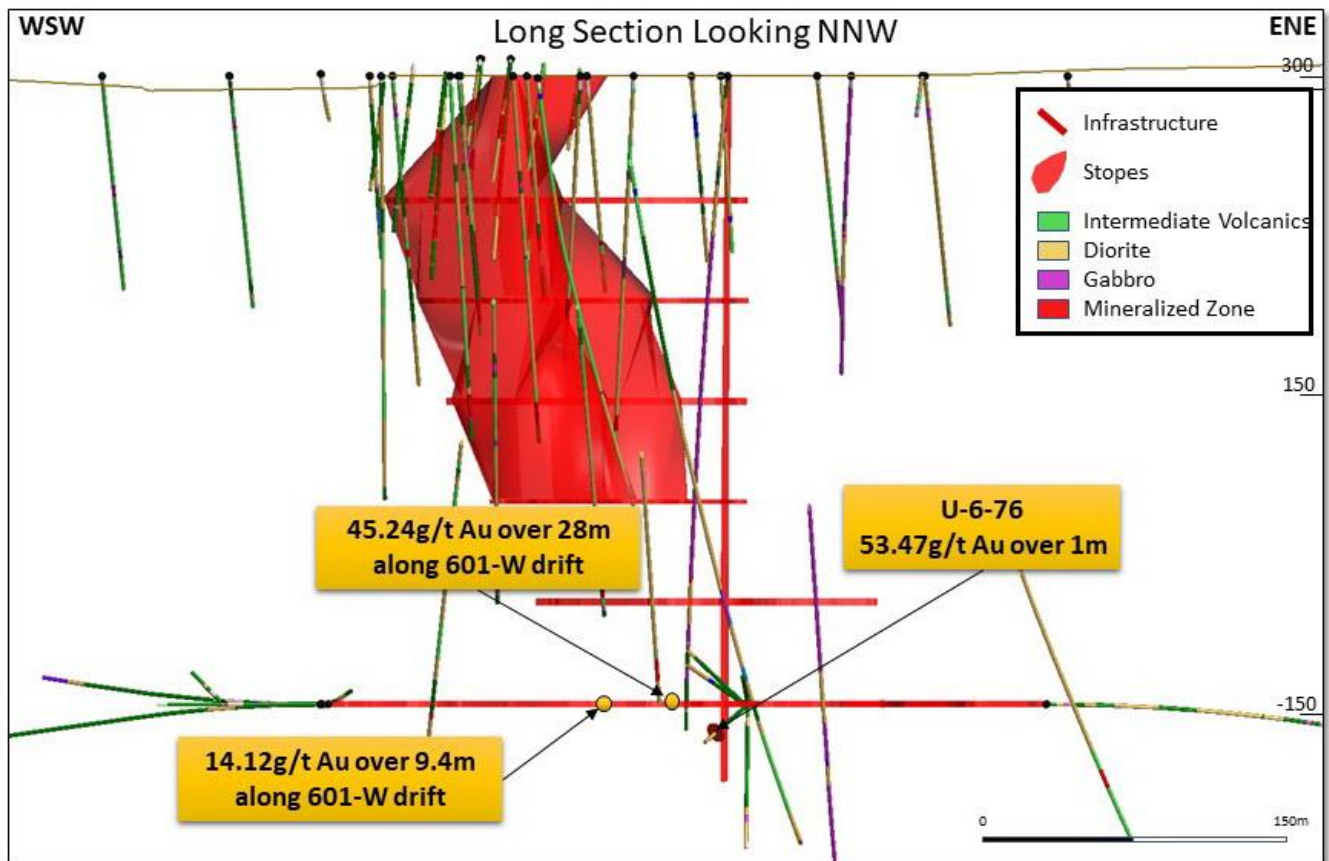


Figure 1: Lorraine Mine long-section showing large (600,000t) stope to surface above the 4-Level Ni-Cu orebody and the shaft and development drifts with gold mineralisation on the 6-Level shown.

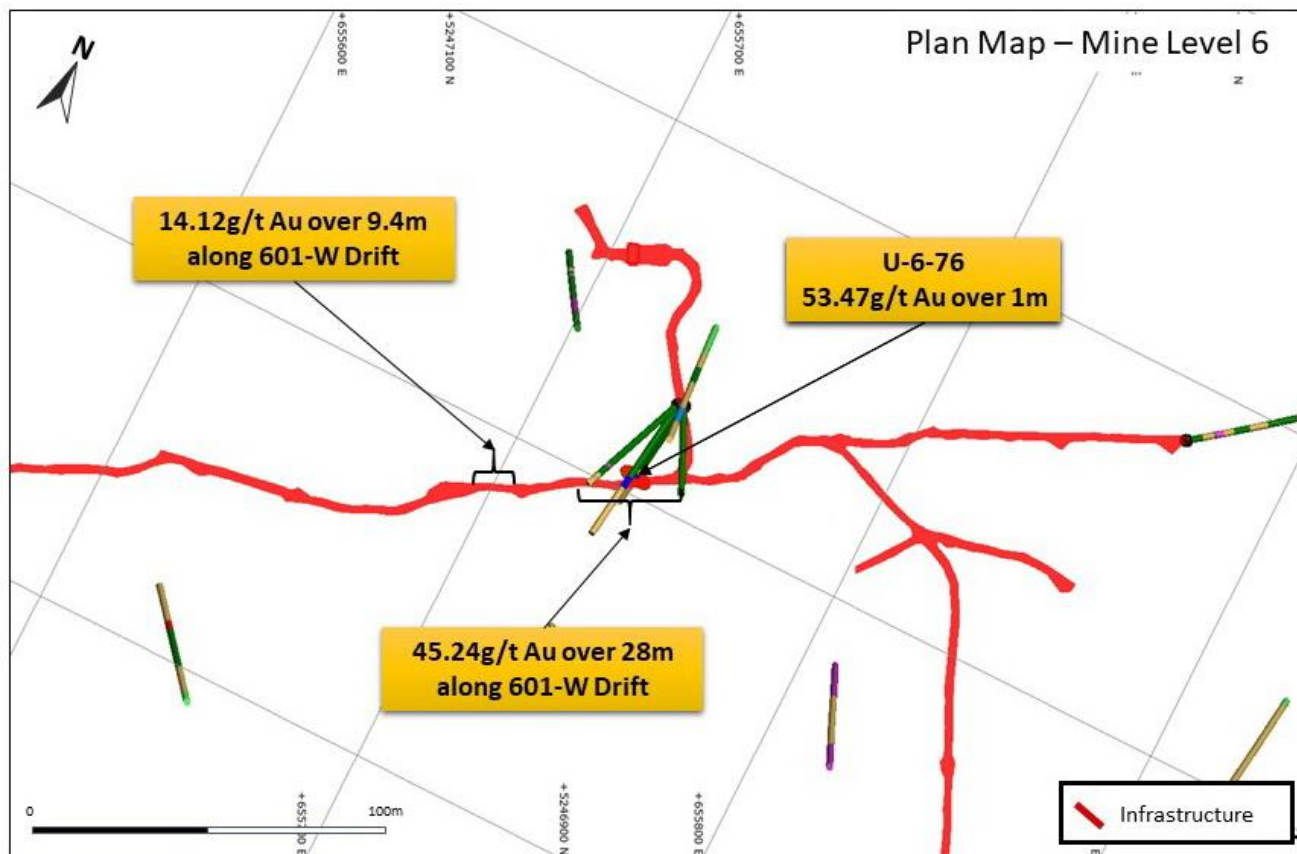


Figure 2: Lorraine Mine Plan View 6-Level (300m VD) showing the location of gold assay values from sampling of the backs. An underground hole drilled from the 601S crosscut intersected the vein system ~12m below the 601 W drift (see Figure 3).

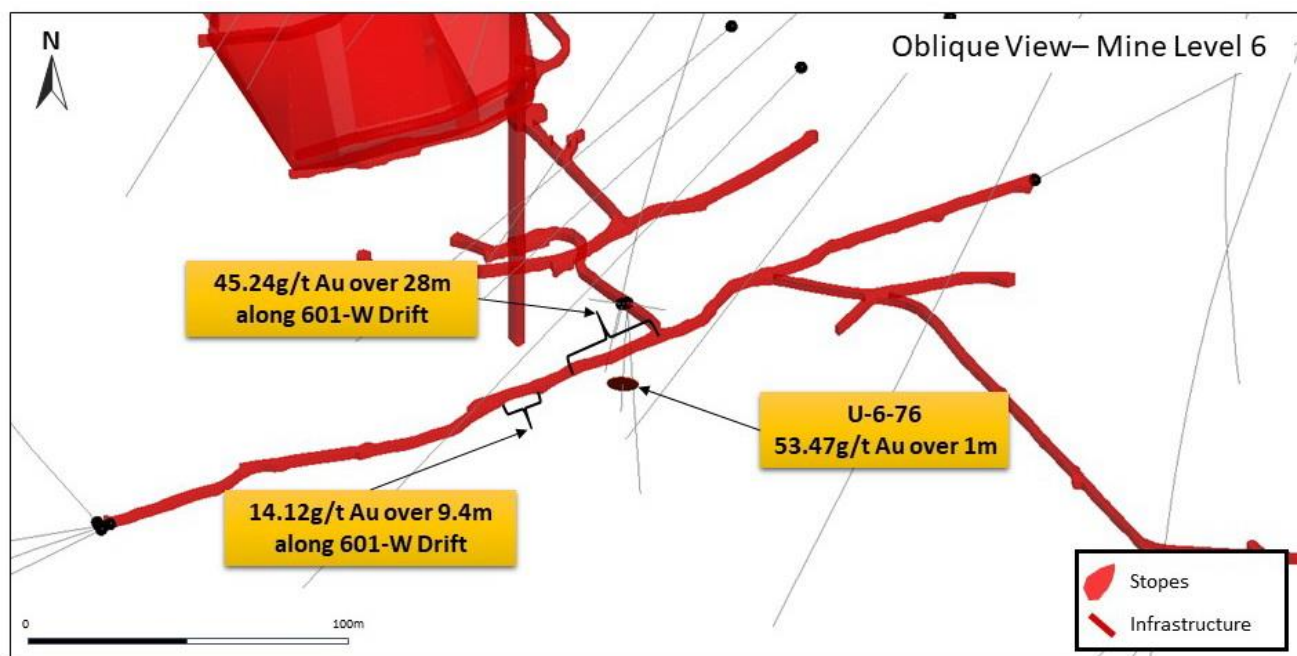


Figure 3: Lorraine Mine 6-Level (300m VD) oblique view of Figure 2 showing the location of gold assay values from sampling of the backs. Underground hole U-6-76 drilled from the 601S crosscut intersected the vein system ~12m below the 601 W drift (also see Figure 4).

Conclusions

The compilation phase of the Orix SOW is almost complete as can be seen from the Figures presented in this report.

Without committing to specific targets at this stage (of the SOW) there appears to be excellent potential to develop a gold mineralised system within the footwall of the Ni-Cu massive sulphide lens (**Figure 4**).

It is estimated that pending the final results, up to 8 deep (350 to 400m) holes will initially be required to test the reported footwall gold potential.

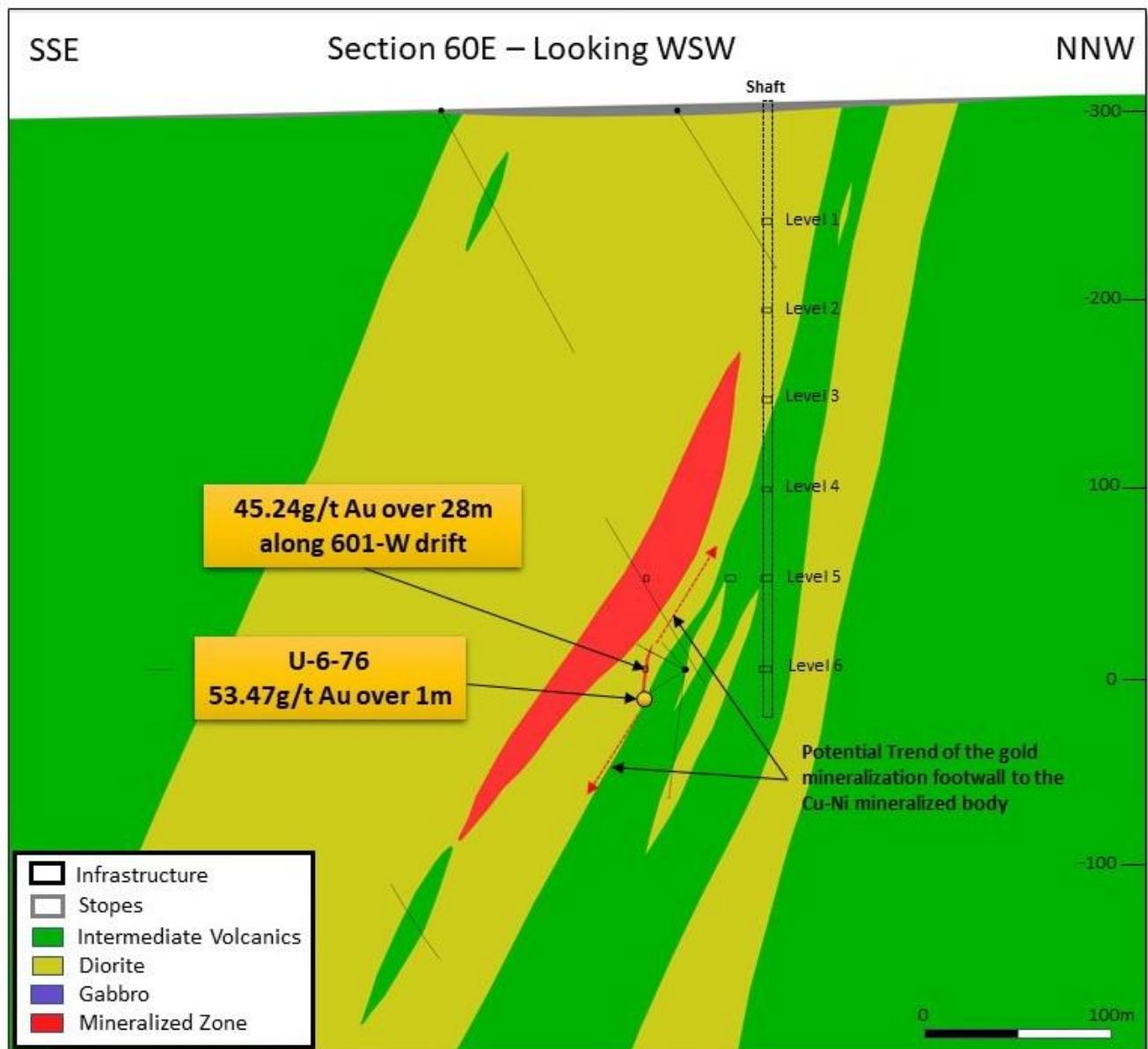


Figure 4: Interpreted Section 60E showing the shaft and level development, importantly the location of u/g hole U-6-76 is shown with the high-grade intercept ~12m below the 6-Level drift

Future Work

Upon completion of the Lorraine Gold Project SOW, Orix will commence the Alotta SOW as detailed in the ASX Announcement of 21 January 2020. The current intension is to drill 4 or 5 holes at Alotta set to start for the week of 18 May 2020 subject to weather and access constraints and then to move the drilling rig to Lorraine.

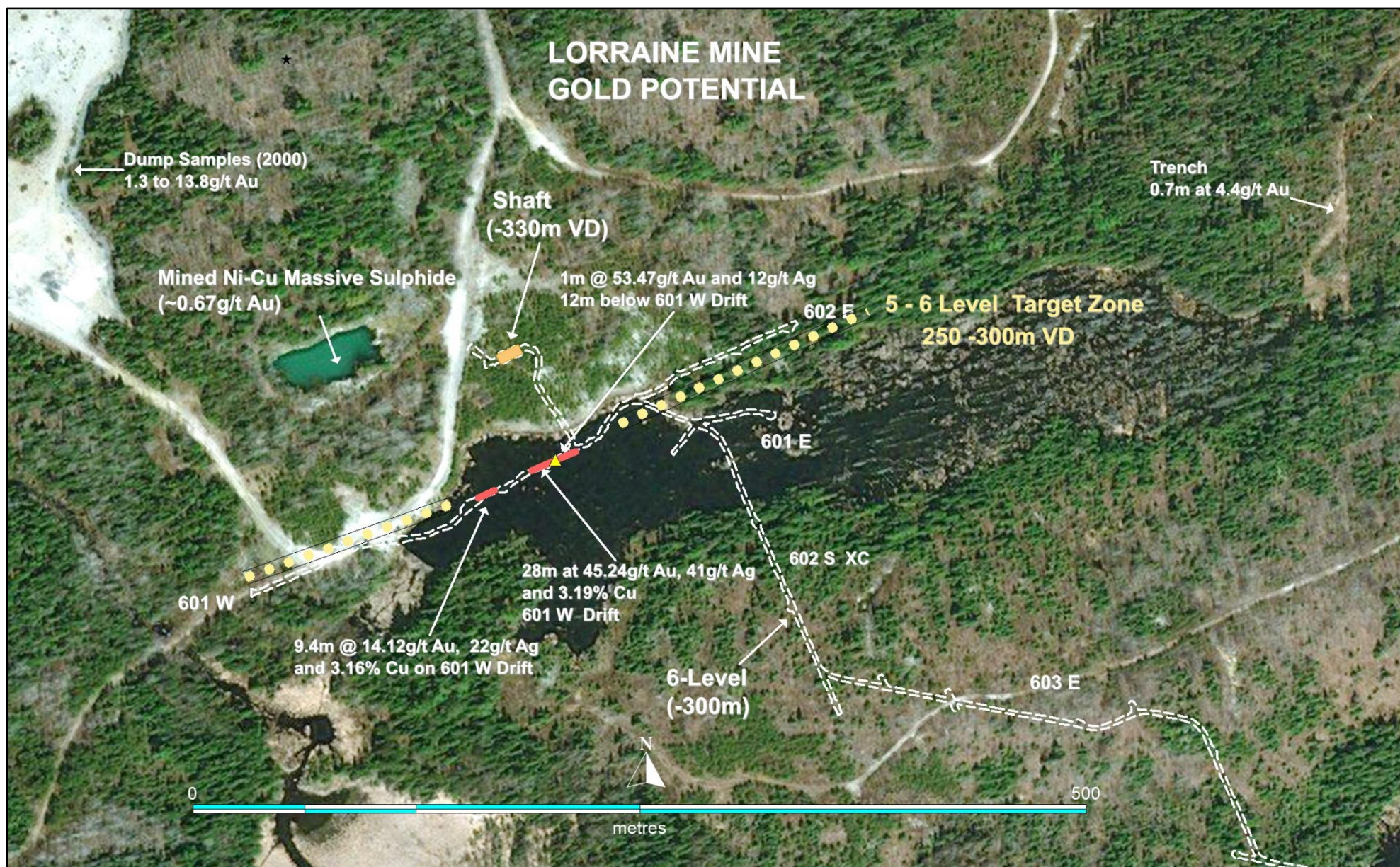


Figure 5: Lorraine Mine Site – Surface Plan with 6-Level Gold Sampling

This announcement has been authorised for release to the ASX by the Disclosure Committee, on behalf of the Board.

For, and on behalf of, the Board of Directors of Chase Mining Corporation Limited:

Dr Leon Pretorius
Executive Chairman
Chase Mining Corporation Limited

2 March 2020

Direct any enquiries to: Martin Kavanagh on 0419 429 974 or Leon Pretorius on 0419 702 616

Competent Person Statements*

The information in this report that relates to Exploration Activities is based on information evaluated by Dr Leon Pretorius who is a Fellow of The Australasian Institute of Mining and Metallurgy (FAusIMM) and who has sufficient experience relevant to the activity which he is undertaking to qualify as a Competent Person as defined in the 2012 Edition of the Australasian Code for Reporting of Exploration Results, Mineral Resources and Ore Reserves (JORC Code 2012). Dr Pretorius is the Executive Chairman of Chase Mining Corporation Limited and he consents to the inclusion in the report of the information in the form and context in which it appears. Dr Pretorius holds shares in Chase Mining Corporation Limited.

Information in this ASX announcement that relates to Exploration Activities is based on information compiled by Mr Martin Kavanagh. Mr Kavanagh is a Non-Executive Director of Chase Mining Corporation Limited and is a Fellow of the Australasian Institute of Mining and Metallurgy (FAusIMM), a Member of the Australian Institute of Geoscientists (MAIG) and a Member of the Canadian Institute of Mining, Metallurgy and Petroleum (CIM). Mr Kavanagh has sufficient experience, which is relevant to the style of mineralisation and type of deposit under consideration, and to the activities, which he is undertaking. This qualifies Mr Kavanagh as a "Competent Person" as defined in the 2012 edition of the Australasian Code for Reporting of Exploration Results, Mineral Resources and Ore Reserves (JORC Code 2012). Mr Kavanagh consents to the inclusion of information in this announcement in the form and context in which it appears. Mr Kavanagh holds shares in Chase Mining Corporation Limited.

*The Orix personnel (professional geologists) who are compiling and reviewing information from the Company's Lorraine database are being supervised by Chase Mining Corporation Ltd director's Dr Leon Pretorius and Martin Kavanagh, the above-named Competent Persons.

APPENDIX 2

JORC Code, 2012 Edition – Table 1 report template

2 March 2020

Section 1 Sampling Techniques and Data

(Criteria in this section apply to all succeeding sections.)

Criteria	JORC Code explanation	Commentary
Sampling techniques	<ul style="list-style-type: none">• <i>Nature and quality of sampling (e.g. cut channels, random chips, or specific specialised industry standard measurement tools appropriate to the minerals under investigation, such as down hole gamma sondes, or handheld XRF instruments, etc). These examples should not be taken as limiting the broad meaning of sampling.</i>• <i>Include reference to measures taken to ensure sample representivity and the appropriate calibration of any measurement tools or systems used.</i>• <i>Aspects of the determination of mineralisation that are Material to the Public Report.</i>• <i>In cases where 'industry standard' work has been done this would be relatively simple (e.g. 'reverse circulation drilling was used to obtain 1 m samples from which 3 kg was pulverised to produce a 30g charge for fire assay'). In other cases, more explanation may be required, such as where there is coarse gold that has inherent sampling problems. Unusual commodities or mineralisation types (e.g. submarine nodules) may warrant disclosure of detailed information.</i>	<ul style="list-style-type: none">• No current drilling is being reported• This ASX relates to the reporting of historic (1960s) data from the then operating Lorraine Nickel Mine.• Information relating to the Lorraine Projects exploration history was sourced from company reports lodged with the Quebec Mines Department (MERN -Ministère de l'Énergie et des Ressources naturelles) and compiled by ORIX Geoscience the Company's consultant geologists• All of the assessment work has been carried under the supervision of the Company's Competent Persons namely, Directors Dr Leon Pretorius and Martin Kavanagh.
Drilling techniques	<ul style="list-style-type: none">• <i>Drill type (e.g. core, reverse circulation, open-hole hammer, rotary air blast, auger, Bangka, sonic, etc) and details (e.g. core diameter, triple or standard tube, depth of diamond tails, face-sampling bit or other type, whether core is oriented and if so, by what method, etc).</i>	<ul style="list-style-type: none">• No Drilling, not applicable.
Drill sample recovery	<ul style="list-style-type: none">• <i>Method of recording and assessing core and chip sample recoveries and results assessed.</i>• <i>Measures taken to maximise sample recovery and ensure representative nature of the samples.</i>• <i>Whether a relationship exists between sample recovery and grade and whether sample bias may have occurred due to preferential loss/gain of fine/coarse material.</i>	<ul style="list-style-type: none">• No Drilling, not applicable.
Logging	<ul style="list-style-type: none">• <i>Whether core and chip samples have been geologically and geotechnically logged to a level of detail to support appropriate</i>	<ul style="list-style-type: none">• No Drilling, not applicable.

Criteria	JORC Code explanation	Commentary
	<p><i>Mineral Resource estimation, mining studies and metallurgical studies.</i></p> <ul style="list-style-type: none"> • <i>Whether logging is qualitative or quantitative in nature. Core (or costean, channel, etc) photography.</i> • <i>The total length and percentage of the relevant intersections logged.</i> 	
Sub-sampling techniques and sample preparation	<ul style="list-style-type: none"> • <i>If core, whether cut or sawn and whether quarter, half or all core taken.</i> • <i>If non-core, whether riffled, tube sampled, rotary split, etc and whether sampled wet or dry.</i> • <i>For all sample types, the nature, quality, and appropriateness of the sample preparation technique.</i> • <i>Quality control procedures adopted for all sub-sampling stages to maximise representivity of samples.</i> • <i>Measures taken to ensure that the sampling is representative of the in situ material collected, including for instance results for field duplicate/second-half sampling.</i> • <i>Whether sample sizes are appropriate to the grain size of the material being sampled.</i> 	<ul style="list-style-type: none"> • No Drilling, not applicable.
Quality of assay data and laboratory tests	<ul style="list-style-type: none"> • <i>The nature, quality and appropriateness of the assaying and laboratory procedures used and whether the technique is considered partial or total.</i> • <i>For geophysical tools, spectrometers, handheld XRF instruments, etc, the parameters used in determining the analysis including instrument make and model, reading times, calibrations factors applied and their derivation, etc.</i> • <i>Nature of quality control procedures adopted (e.g. standards, blanks, duplicates, external laboratory checks) and whether acceptable levels of accuracy (i.e. lack of bias) and precision have been established.</i> 	<ul style="list-style-type: none"> • No Drilling, not applicable.
Verification of sampling and assaying	<ul style="list-style-type: none"> • <i>The verification of significant intersections by either independent or alternative company personnel.</i> • <i>The use of twinned holes.</i> • <i>Documentation of primary data, data entry procedures, data verification, data storage (physical and electronic) protocols.</i> • <i>Discuss any adjustment to assay data.</i> 	<ul style="list-style-type: none"> • No Drilling, not applicable.

Criteria	JORC Code explanation	Commentary
<i>Location of data points</i>	<ul style="list-style-type: none"> • <i>Accuracy and quality of surveys used to locate drill holes (collar and down-hole surveys), trenches, mine workings and other locations used in Mineral Resource estimation.</i> • <i>Specification of the grid system used.</i> • <i>Quality and adequacy of topographic control.</i> 	<ul style="list-style-type: none"> • The historic mine grid and all hole collars have been tied into UTM NAD83 Zone 17 (Northern Hemisphere) • The VD shown in Figure 4 are based on the Canadian Height Datum (CGVD) • Figures 1 to 5 of this ASX show the location of the underground gold channel sampling and drilling relative to a reconstructed mine grid system which has also been tied into the local UTM grid
<i>Data spacing and distribution</i>	<ul style="list-style-type: none"> • <i>Data spacing for reporting of Exploration Results.</i> • <i>Whether the data spacing and distribution is sufficient to establish the degree of geological and grade continuity appropriate for the Mineral Resource and Ore Reserve estimation procedure(s) and classifications applied.</i> • <i>Whether sample compositing has been applied.</i> 	<ul style="list-style-type: none"> • Not Applicable – no resource estimates
<i>Orientation of data in relation to geological structure</i>	<ul style="list-style-type: none"> • <i>Whether the orientation of sampling achieves unbiased sampling of possible structures and the extent to which this is known, considering the deposit type.</i> • <i>If the relationship between the drilling orientation and the orientation of key mineralised structures is considered to have introduced a sampling bias, this should be assessed and reported if material.</i> 	<ul style="list-style-type: none"> • Not Applicable
<i>Sample security</i>	<ul style="list-style-type: none"> • <i>The measures taken to ensure sample security.</i> 	<ul style="list-style-type: none"> • Not Applicable
<i>Audits or reviews</i>	<ul style="list-style-type: none"> • <i>The results of any audits or reviews of sampling techniques and data.</i> 	<ul style="list-style-type: none"> • Not Applicable

Section 2 Reporting of Exploration Results

(Criteria listed in the preceding section also apply to this section.)

Criteria	JORC Code explanation	Commentary
<i>Mineral tenement and land tenure status</i>	<ul style="list-style-type: none"> Type, reference name/number, location and ownership including agreements or material issues with third parties such as joint ventures, partnerships, overriding royalties, native title interests, historical sites, wilderness or national park and environmental settings. The security of the tenure held at the time of reporting along with any known impediments to obtaining a licence to operate in the area. 	<ul style="list-style-type: none"> The Company holds 100% of the Project tenements in the name of its wholly owned subsidiary Zeus Olympus Sub Corp. The Mining Claims are in good standing and no known impediments exist
<i>Exploration done by other parties</i>	<ul style="list-style-type: none"> Acknowledgment and appraisal of exploration by other parties. 	<ul style="list-style-type: none"> Information relating to the Lorraine Projects exploration history was sourced from company reports lodged with the Quebec Mines Department (MERN -Ministère de l'Énergie et des Ressources naturelles) and compiled by ORIX Geoscience the Company's consultant geologists.
<i>Geology</i>	<ul style="list-style-type: none"> Deposit type, geological setting and style of mineralisation. 	<ul style="list-style-type: none"> The Company is focused on the exploration for Ni-Cu-Co-PGM mineralised gabbro bodies which intrude a sequence of mafic volcanic and felsic volcanoclastic sedimentary rocks in the Belleterre-Angliers Greenstone Belt. The BAGB contains a number of gold deposits Gold mineralisation at the Lorraine Mine occurs as shear zone hosted quartz-pyrite-chalcopyrite veins footwall to Lorraine Ni-Cu-PGE massive sulphide body The Company's website and listed ASX Announcements contain numerous references to the 'Bonanza Grade Gold Mineralisation' at the Lorraine Mine and of the Company's intension to drill the gold mineralised zone ASX Announcements; 10 September 2018, 9 January 2019, 7 August 2019, 15 October 2019, 9 December 2019 and 21 January 2020.
<i>Drill hole Information</i>	<ul style="list-style-type: none"> A summary of all information material to the understanding of the exploration results including a tabulation of the following information for all Material drill holes: <ul style="list-style-type: none"> easting and northing of the drill hole collar 	<ul style="list-style-type: none"> Only one underground drill hole is referenced in this ASX announcement namely U-6-76. The collar location is posted on the mine level plans The hole geology and assays results are taken from a Lorraine

Criteria	JORC Code explanation	Commentary
	<ul style="list-style-type: none"> ○ elevation or RL (Reduced Level – elevation above sea level in metres) of the drill hole collar ○ dip and azimuth of the hole ○ down hole length and interception depth ○ hole length. ● If the exclusion of this information is justified on the basis that the information is not Material and this exclusion does not detract from the understanding of the report, the Competent Person should clearly explain why this is the case. 	<p>Mining Company Diamond Drill Log.</p> <ul style="list-style-type: none"> ● Information on the 601 W channel sampling was taken from various historic reports.
Data aggregation methods	<ul style="list-style-type: none"> ● In reporting Exploration Results, weighting averaging techniques, maximum and/or minimum grade truncations (e.g. cutting of high grades) and cut-off grades are usually Material and should be stated. ● Where aggregate intercepts incorporate short lengths of high-grade results and longer lengths of low-grade results, the procedure used for such aggregation should be stated and some typical examples of such aggregations should be shown in detail. ● The assumptions used for any reporting of metal equivalent values should be clearly stated. 	<ul style="list-style-type: none"> ● The historic data contains no information on the OAQC of the 1960s gold sampling and assaying ● The Company has reported factual data from the 1960s and as such emphasises that modern QAQC procedures and related checks and balances are not available in regard the historic database information
Relationship between mineralisation widths and intercept lengths	<ul style="list-style-type: none"> ● These relationships are particularly important in the reporting of Exploration Results. ● If the geometry of the mineralisation with respect to the drill hole angle is known, its nature should be reported. ● If it is not known and only the down hole lengths are reported, there should be a clear statement to this effect (e.g. 'down hole length, true width not known'). 	<ul style="list-style-type: none"> ● Gold mineralisation at Lorraine Mine is interpreted to be hosted in steeply dipping SSE shear zone footwall to the Ni-Cu massive sulphide body ● Refer to Figure 4 in body of text. ● The intersection is reported as a down hole lengths
Diagrams	<ul style="list-style-type: none"> ● Appropriate maps and sections (with scales) and tabulations of intercepts should be included for any significant discovery being reported. These should include, but not be limited to a plan view of drill hole collar locations and appropriate sectional views. 	<ul style="list-style-type: none"> ● Figures 1 to 5 of this ASX show the location of the underground gold channel sampling and drilling relative to a reconstructed mine grid system which has also been tied into the local UTM grid
Balanced reporting	<ul style="list-style-type: none"> ● Where comprehensive reporting of all Exploration Results is not practicable, representative reporting of both low and high grades and/or widths should be practiced to avoid misleading reporting of Exploration Results. 	<ul style="list-style-type: none"> ● The Company has reported factual data from the 1960s and as such emphasises that modern QAQC procedures and related checks and balances are not available in regard the historic database information
Other substantive	<ul style="list-style-type: none"> ● Other exploration data, if meaningful and material, should be reported including (but not limited to): geological observations; geophysical survey results; geochemical survey results; bulk samples – size and method of treatment; metallurgical test results; bulk density, 	<ul style="list-style-type: none"> ● The Company's website (www.chasemining.com.au) details historical exploration, geology and mineralisation and geophysical survey data tabled in the form of ASX announcements for the Canadian projects.

Criteria	JORC Code explanation	Commentary
<i>exploration data</i>	<i>groundwater, geotechnical and rock characteristics; potential deleterious or contaminating substances.</i>	
<i>Further work</i>	<ul style="list-style-type: none"> <i>The nature and scale of planned further work (e.g. tests for lateral extensions or depth extensions or large-scale step-out drilling).</i> <i>Diagrams clearly highlighting the areas of possible extensions, including the main geological interpretations and future drilling areas, provided this information is not commercially sensitive.</i> 	<ul style="list-style-type: none"> Upon completion of the Lorraine Gold Project SOW, Orix will commence the Alotta SOW as detailed in the ASX Announcement of 21 January 2020. The current intension is to drill 4 or 5 holes at Alotta set to start for the week of 18 May 2020 subject to weather and access constraints and then to move to Lorraine