

# Invigorated for Action

March 2020



**Diversified Minerals Explorer**  
GOLD - COPPER - LITHIUM

[www.li3limited.com](http://www.li3limited.com)

 **ASX Li3**



Presentation By: **Andrew Haythorpe**

CEO & Managing Director

## ■ What's Happening Today with Li3

- New Assets
- Exploration on the ground underway
- New Opportunities
- New People
- New Strategy

## ■ New Diversified Future for Li3

The Company has acquired new assets and a new approach to creating value for shareholders.

0.019

20 March 2020 7:00 PM AEDT



## Li3 New Assets

### ■ Gold

- 510km<sup>2</sup> of gold copper prospects
- Located in the Yalgoo / Mount Magnet districts of Western Australia
- **Accessible low-cost assets with near surface potential.**

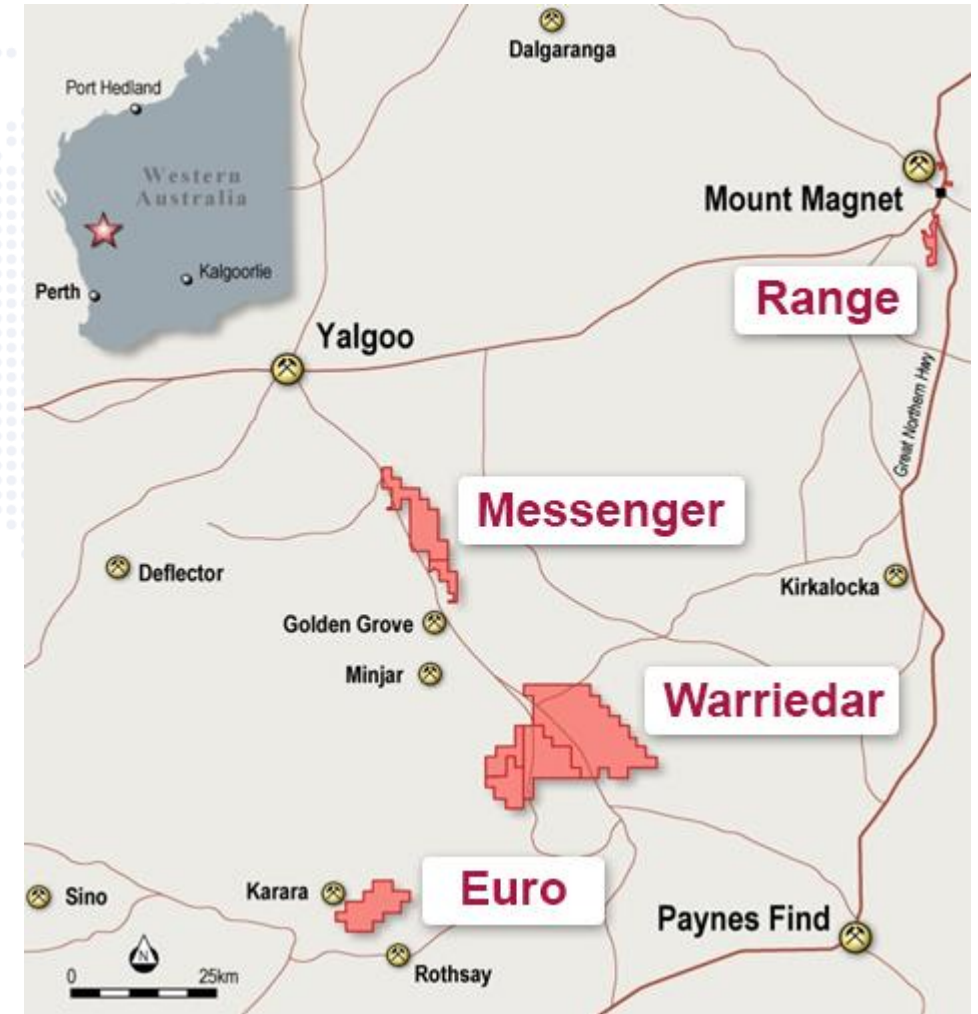
### ■ Priority Gold targets include:

- 8g/t gold surface quartz vein chips reported at Warriedar <sup>(1)</sup>
- 15m @ 2.33 g/t (including 7m @ 3.4g/t) historical results at Euro. <sup>(1)</sup>

### ■ Gold and base minerals

- Safe-haven commodity with well established commercial models
- Stability and familiarity, something WA does very well.

Reference (1) : Li3 ASX Release dated 21 November 2019 – Lithium Consolidated to Acquire Warrigal Mining.



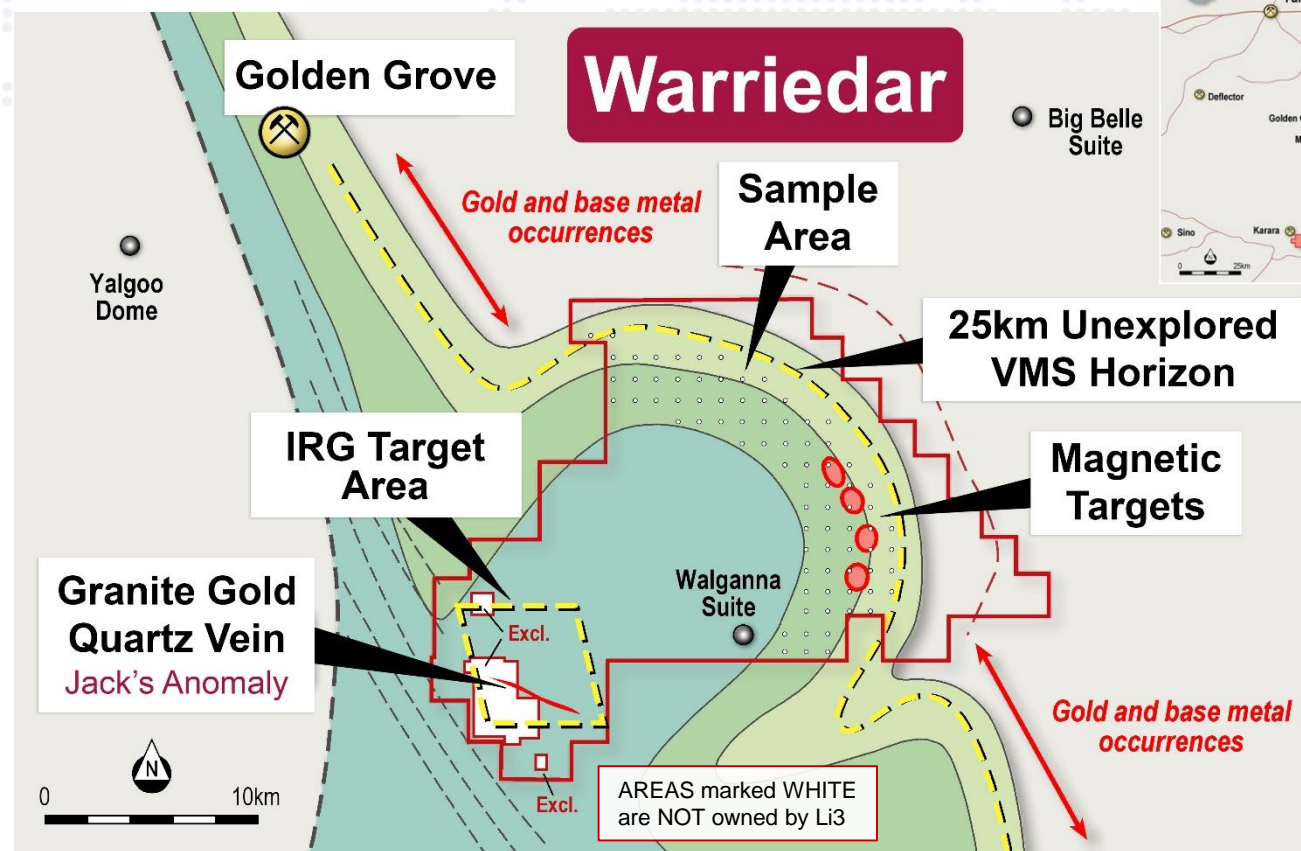
Mt Magnet and Yalgoo tenement location map



## Sampling and Mapping Underway

- 333km<sup>2</sup> of granted tenure
- Located within 20km of the Minjar and Golden Grove mines
- Surface samples up to 8g/t
- >25km of previously unrecognized greenstone and felsic volcanics
- Highly prospective for base metals and gold
- 1913-1935 State Battery reported 10.7g/t gold <sup>(1)</sup>
- The Warriedar Mine reported 9.83% Copper. <sup>(1)</sup>

Reference (1) : Li3 ASX Release dated 21 November 2019 –Lithium Consolidated to Acquire Warrigal Mining.



## What's Happening

- Large coincident Base Metals anomaly identified in potential Golden Grove rock types
- 25km long newly confirmed greenstone belt sampled
- Above background gold identified along 20km of strike
- 2 of 3 regional mapping and soil Geochem surveys now completed
- 543 assays received or pending from Programs
- Infill follow up Program being planned for gold and base metals.



## Action at Site

### Program One

319 samples (received)

- Considered highly prospective for Volcanic Massive Sulphides (VMS) and Gold
- Co-incident Copper, Lead and Zinc anomaly on hand auger sampling

### Program Two

224 samples (pending)

- Flanked by greenstone and volcanics
- Significant Intrusive Related Gold System (IRGS)
- Surface sample grades up to 8g/t

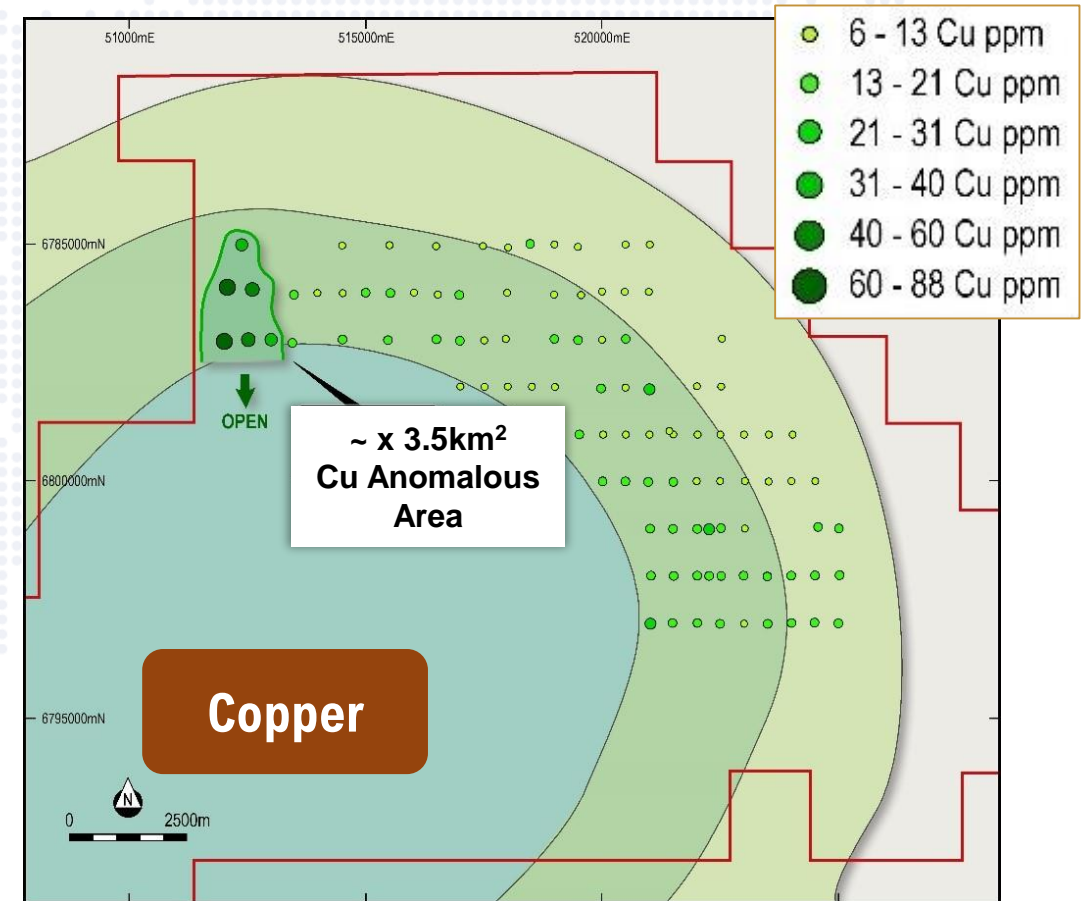
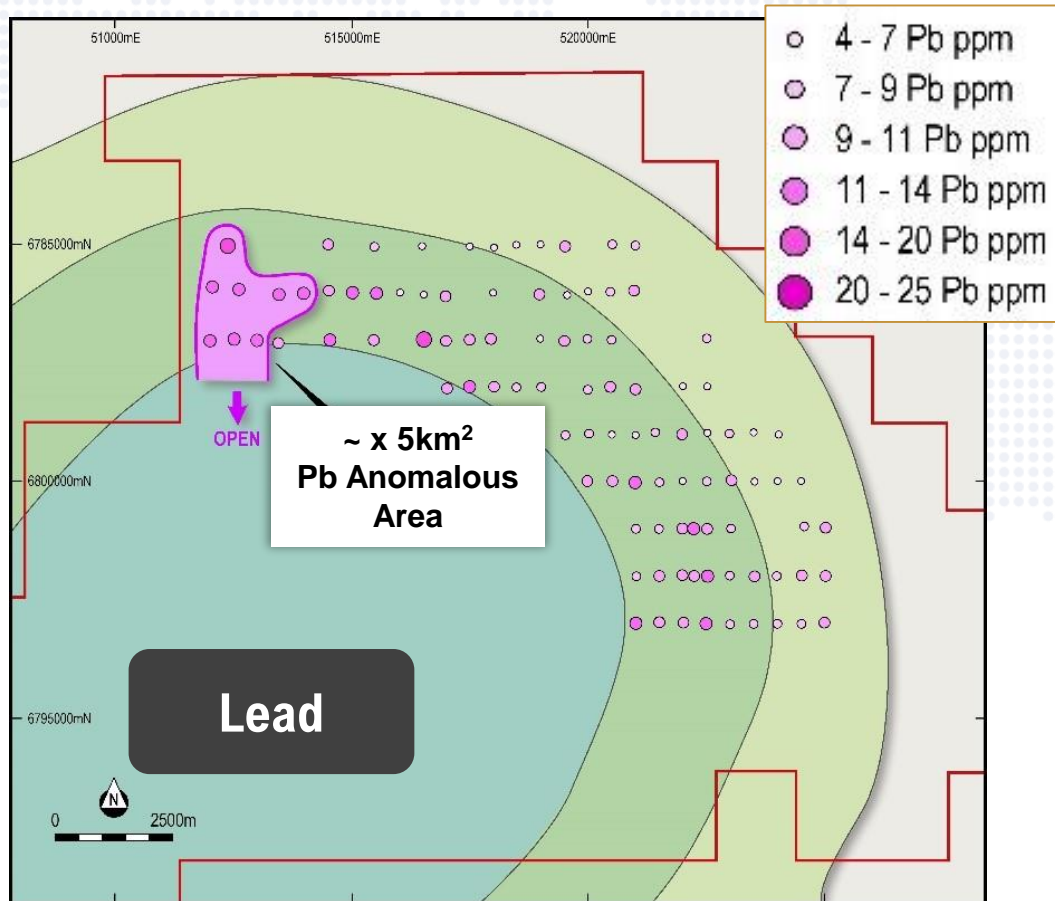
---

**Auger** and **RAB** are preferred methodologies for next round of target work



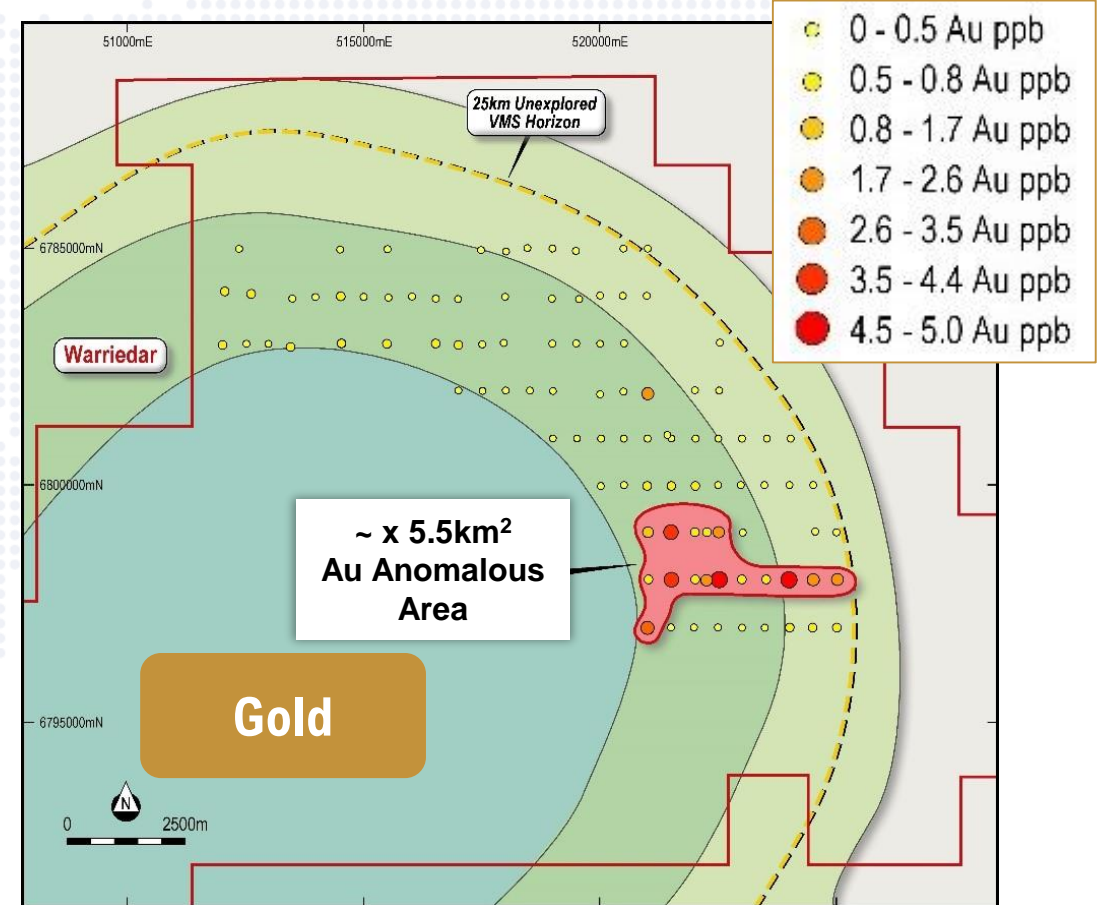
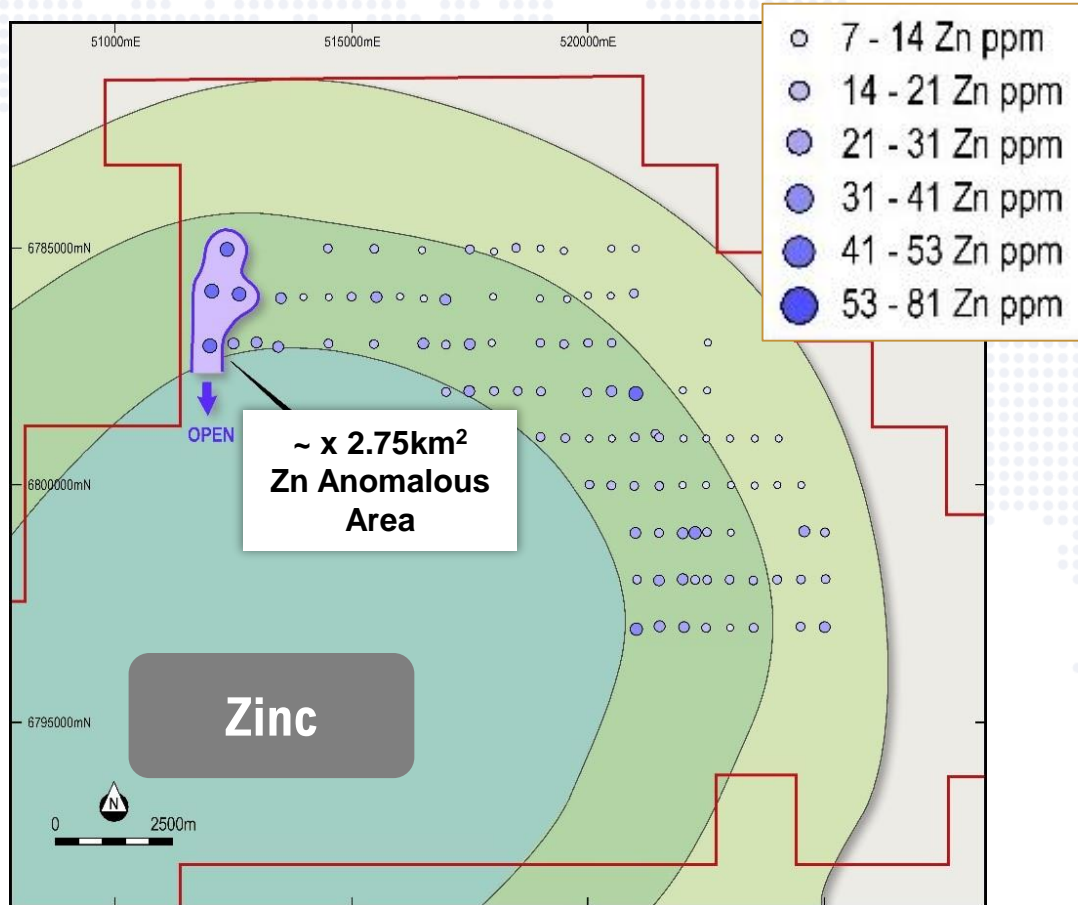
**Significantly, results show a co-incident Copper, Lead and Zinc anomaly**

## Program One



**With Gold target area  
identified for evaluation**

**Program One**

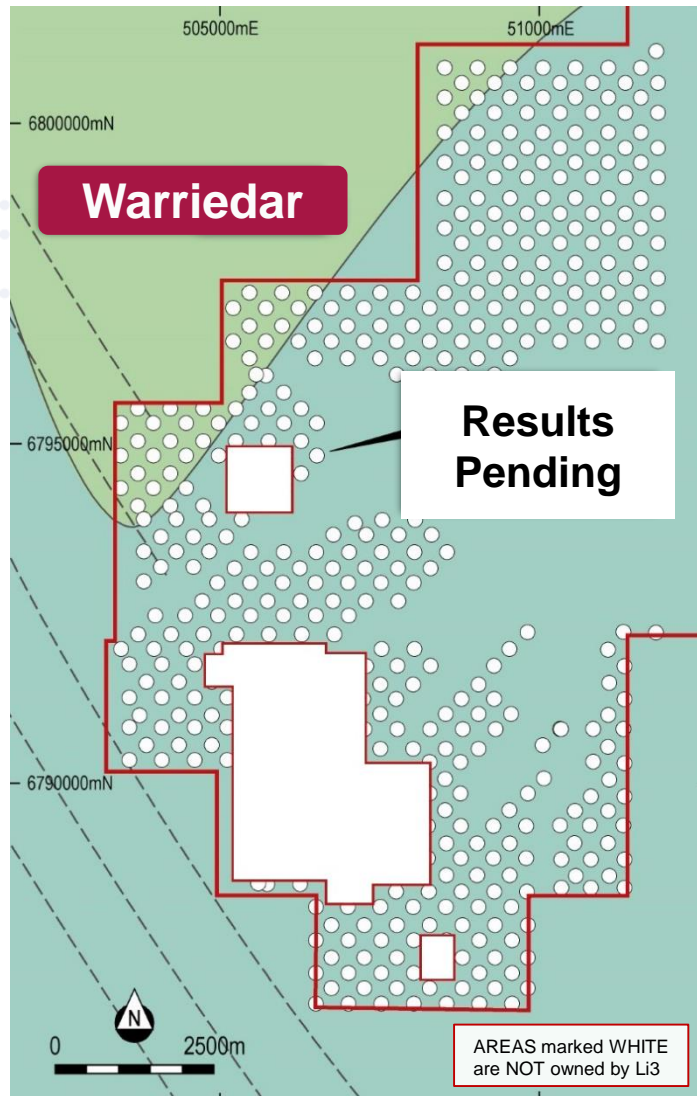




## Program Two

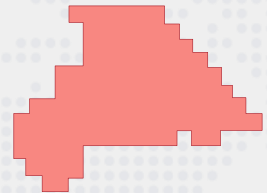
### Focus on South-western corner of Intrusive

- Results pending 224 samples
- Altered granite with quartz
- Small scale gold mining in adjacent tenements



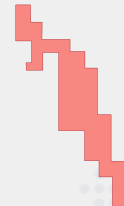


# Key Gold Projects



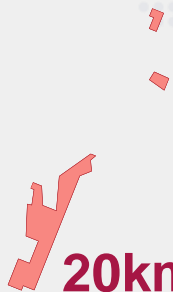
**333km<sup>2</sup>**  
granted tenure

**Warriedar Gold Project**



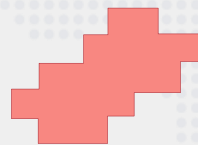
**93km<sup>2</sup>**  
granted tenure

**Messenger Gold Project**



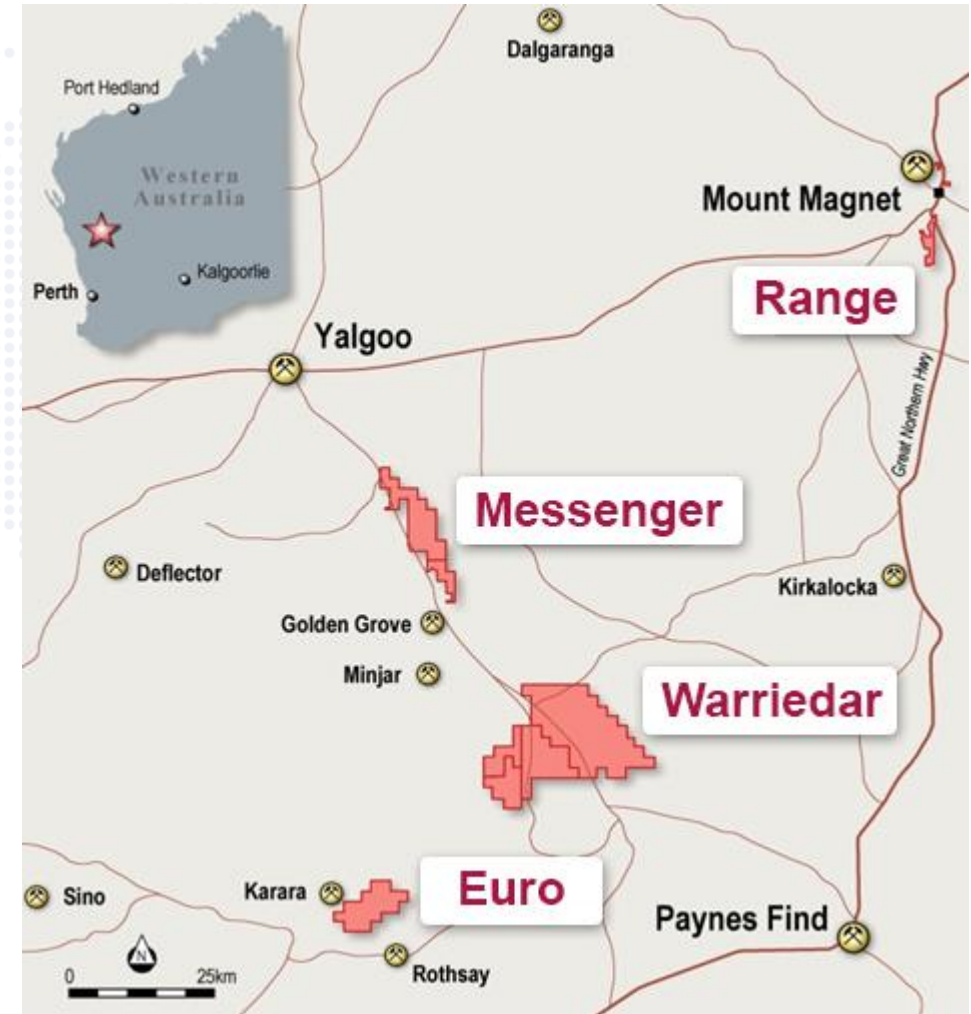
**20km<sup>2</sup>**  
granted tenure

**Range Gold Project**



**63km<sup>2</sup>**  
granted tenure

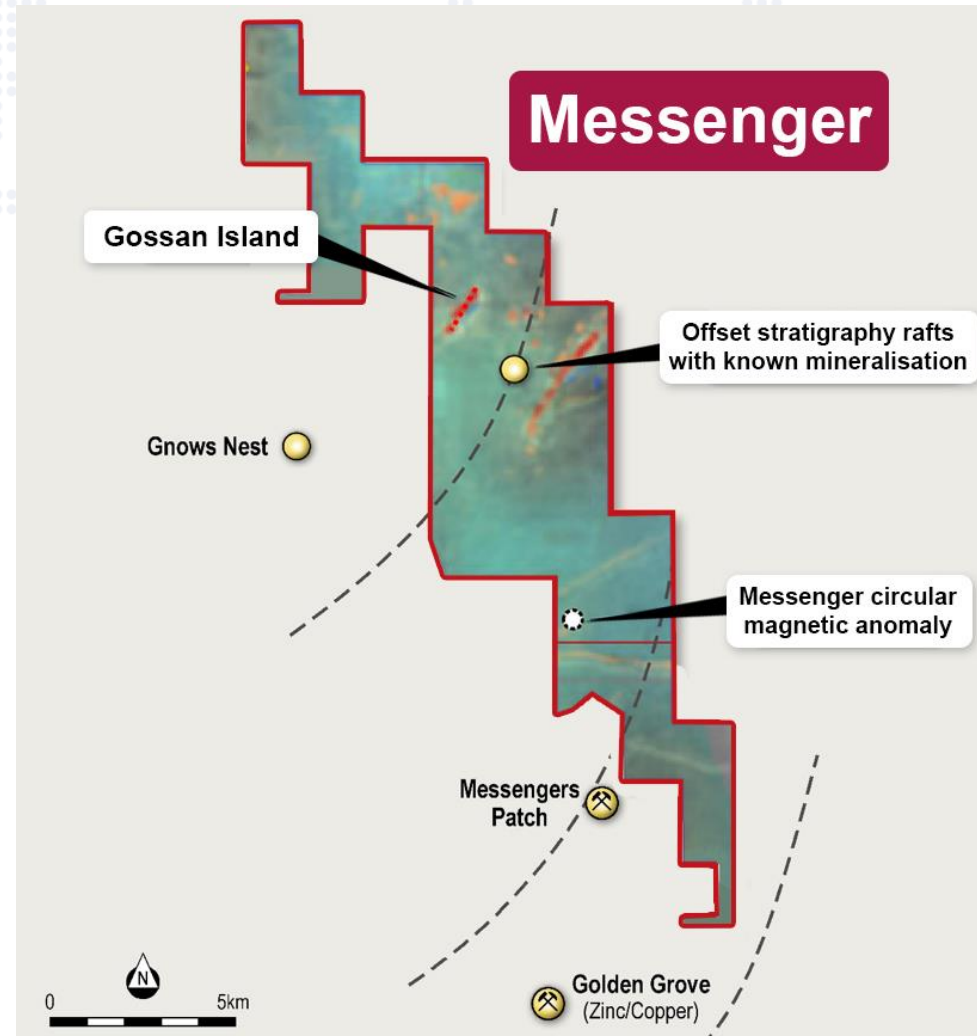
**Euro Gold Project**



Mt Magnet and Yalgoo tenement location map

## Golden Grove Potential

- 93km<sup>2</sup>
- Located near the EMR Golden Grove base and precious metal mine
- Golden Grove Unit outcrops
- Large outcrops of underexplored greenstone hosted quartz lodes
- Gold discovered in 1907
- Extensive artisanal gold production
- Minimal modern exploration.



Messenger Project with magnetics and nearby mineral occurrences



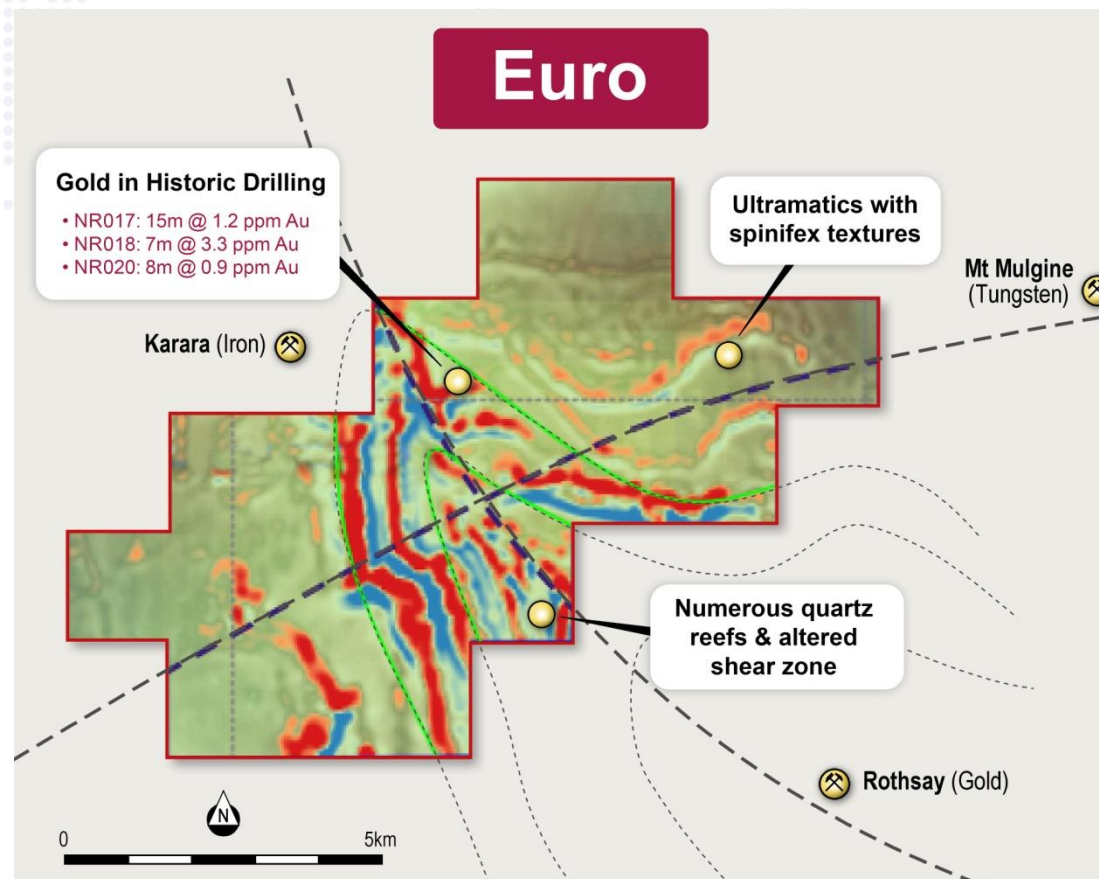


## Near Surface Gold

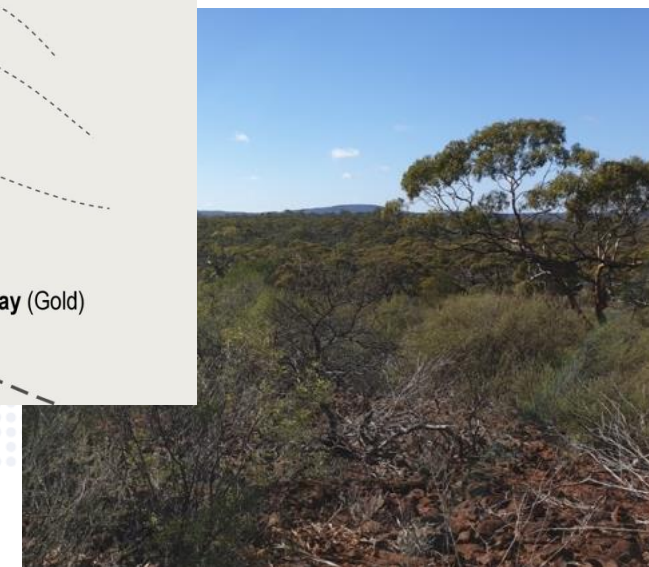
- 63km<sup>2</sup> on the south Yalgoo Greenstone belt
- Cross-cutting shear zones host significant mineralization
- Historical drill intercepts
- Recent discovery of ultramafic units with spinifex textures (indicative of nickel).

HOLE ID	DEPTH	INTERVAL
NR017	20m	15m @ 1.15g/t
NR020	20m	8m @ 0.87g/t (including 5m @ 1.3g/t)
NR018	15m	15m @ 2.33 g/t (including 7m @ 3.4g/t)

**Reference (1)** : Li3 ASX Release dated 21 November 2019 – Lithium Consolidated to Acquire Warrigal Mining.



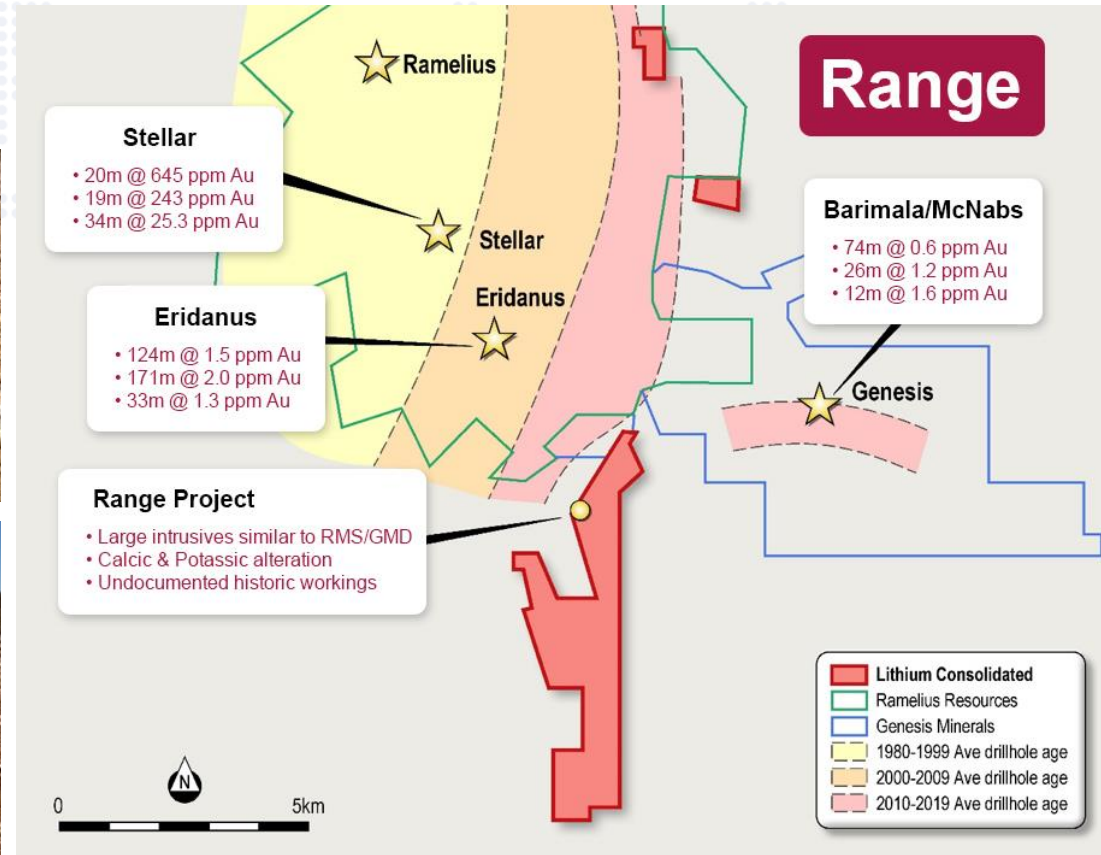
Euro Project and nearby operations



## Historical Production

- 20km<sup>2</sup> of granted tenure
- Located 5km from Mt Magnet (>6Moz historical production)
- 7km strike length of prime geology
- Numerous shear hosted and orogenic quartz lodes
- Intrusive and porphyry-style mineralisation
- Mapping encouraging.

**Reference (2)** : Source of the data is WAMEX (specifically document A48951, Aztec Mining Annual Report 1996)



Range Project with neighbouring exploration success





## ■ Area has a History

- Yalgoo and Mount Magnet mining districts of Western Australia have a proven endowment
- Substantial potential remains.

## ■ Location

- Lower cost exploration
- Close to Perth
- Good access via road. No FIFO
- Lower cost area to operate
- Services + materials with infrastructure in this region.









# Li3 Activity and Action





## ■ Directors are Owners

- Directors among the top shareholders
- Strong personal connections to the success of the Company
- The Directors have long-term industry experience with real mining expertise and strong corporate abilities.

## ■ Executive Management

- New CEO/Managing Director with commercial and operational expertise and a track-record in building a Gold Company.

## ■ New Team

- A New Team with the right skills and capability
- A passion to make this work.



DIRECTORS INTERESTS (20 March 2020)		
DIRECTOR	TOTAL SHARES	PERCENTAGE
Mr B Moller	2,162,500	1.47
Mr A Haythorpe	342,000	0.23
Mr V Mascolo	1,050,000	0.71
Mr O Burchell	6,601,718	4.48
Mr D Smith	6,601,718	4.48
<b>TOTAL</b>	<b>16,757,936</b>	<b>11.37</b>







**BRIAN  
MOLLER**

Non-executive Chairman

Brian Moller specializes in capital markets, mergers and acquisitions.

Brian has been a partner at the legal firm, Hopgood Ganim for 30 years and leads the Corporate Advisory and Governance practice. Brian acts for many publicly listed companies in Australia and regularly advises boards of directors on corporate governance and related issues.

Brian is a Non-executive director of ASX listed DGR Global Ltd and Dark Horse Resources Ltd and Chairman of ASX listed Aus Tin Mining Ltd , Platina Resources Ltd , Lithium Consolidated Ltd and LSE and and TSX listed SolGold PLC.



**VINCENT  
MASCOLO**

Non-executive Director

Vincent Mascolo is a qualified Mining Engineer with extensive experience in a variety of fields including, gold and coal mining, quarrying and civil-works.

Vincent has completed large scale infrastructure projects in the civil and construction industry, including construction and project management, engineering, quality control and environment and safety management.

Vincent is a member of both the Australian Institute of Mining and Metallurgy and the Institute of Engineers of Australia.

Vincent is the CEO of AIM listed IronRidge Resources Ltd and a Non-executive Director of ASX listed DGR Global Ltd.



**ANDREW  
HAYTHORPE**

Managing Director

Andrew Haythorpe has 30 years experience in geology, funds management and has been a Director and Chairman of a number of TSX and ASX listed companies.

Andrew has been involved in over A\$300 million of mergers, acquisitions and capital raisings.

More recently Andrew was the Managing Director of Crescent Gold, and Managing Director of Michelago Resources.

Andrew has a Bachelor of Science (Hons) from the James Cook University, is a Member of the Australian Institute of Company Directors (MAICD) and a Fellow of the Australian Minerals Institute (FAusIMM).



**DON  
SMITH**

Non-executive Director

Don Smith is a Geologist and entrepreneur with over 20 years in the mining industry. He has worked roles for junior through to multinational firms spanning over 10 countries and numerous commodities.

Don was a founding director of Platypus Resources and BK Gold Mines. More recently, as a director of Alderan Resources, he was involved in the development of the company's assets and successful IPO.

Don has a Bachelor of Science from Newcastle University and a MBA from the Australian Institute of Business. Member of the Australasian Institute of Mining and Metallurgy and a member of the Australian Institute of Geoscientists.



**OWEN  
BURCHELL**

Non-executive Director

Owen Burchell is a Mining Engineer with 20 years of technical, operational and corporate experience including management positions at Rio Tinto, BHP and Barrick Gold through to numerous mining start-ups, closures and operational turnaround projects.

Owen is currently a director of several private resource companies and draws on his extensive industry knowledge consulting in this sector.

Owen holds several post graduate qualifications from the West Australian School of Mines and is the holder of a First Class Mine Managers Certificate of Competency. Member of the Australasian Institute of Mining and Metallurgy.

## CAPITAL STRUCTURE

DATE	20/03/2020
ASX CODE	Li3
SHARES ON ISSUE	147.27m
SHARE PRICE	A\$ 0.019
UNLISTED OPTIONS	41.4m
MARKET CAPITALISATION	2.8m
CASH – DEC 31 2019	\$929,000
DEBT	0

0.019

20 March 2020 7:00 PM AEDT

ASX Li3



## TOP 5 SHAREHOLDERS (13 February 2020)

POSITION	TOTAL SHARES	PERCENTAGE
1	AUSTRALIAN CONSOLIDATED VENTURE CAPITAL PTY LTD	16.86
2	V-DOOR PTY LTD (Mr D Smith)	4.48
3	GALT INDUSTRIES PTY LTD (Mr O Burchell)	4.48
4	HSBC CUSTODY NOMINEES (AUSTRALIA) LIMITED	2.92
5	BIG SMOKEY EXPLORATION LLC	2.29



- Any material used in this presentation is only an overview and summary of certain data selected by the management of Lithium Consolidated Limited (“Li3”).
- The presentation does not purport to contain all the information that a prospective investor may require in evaluating a possible investment in Li3 nor does it contain all the information which would be required in a disclosure document prepared in accordance with the requirements of the Corporations Act and should not be used in isolation as a basis to invest in Li3. Recipients of this presentation must make their own independent investigations, consideration and evaluation of Li3.
- Li3 recommends that potential investors consult their professional advisor/s as an investment in Li3 is considered to be speculative in nature.
- Statements in this presentation are made only as of the date of this presentation unless otherwise stated and the information in this presentation remains subject to change without notice. Reliance should not be placed on information or opinions contained in this presentation.
- To the maximum extent permitted by law, Li3 disclaims any responsibility to inform any recipient of this presentation on any matter that subsequently comes to its notice which may affect any of the information contained in this document and presentation and undertakes no obligation to provide any additional or updated information whether as a result of new information, future events or results or otherwise.
- No representation or warranty, express or implied, is made as to the fairness, accuracy, completeness or correctness of the information, opinions or conclusions contained in or derived from this presentation or any omission from this presentation or of any other written or oral information or opinions provided now or in the future to any person.
- To the maximum extent permitted by law, neither Li3 nor, any affiliates, related bodies corporate and their respective officers, directors, employees, advisors and agents, nor any other person, accepts any liability as to or in relation to the accuracy or completeness of the information, statements, opinions or matters (express or implied) arising out of, contained in or derived from this presentation or any omission from this presentation or of any other written or oral information or opinions provided now or in the future to any person.

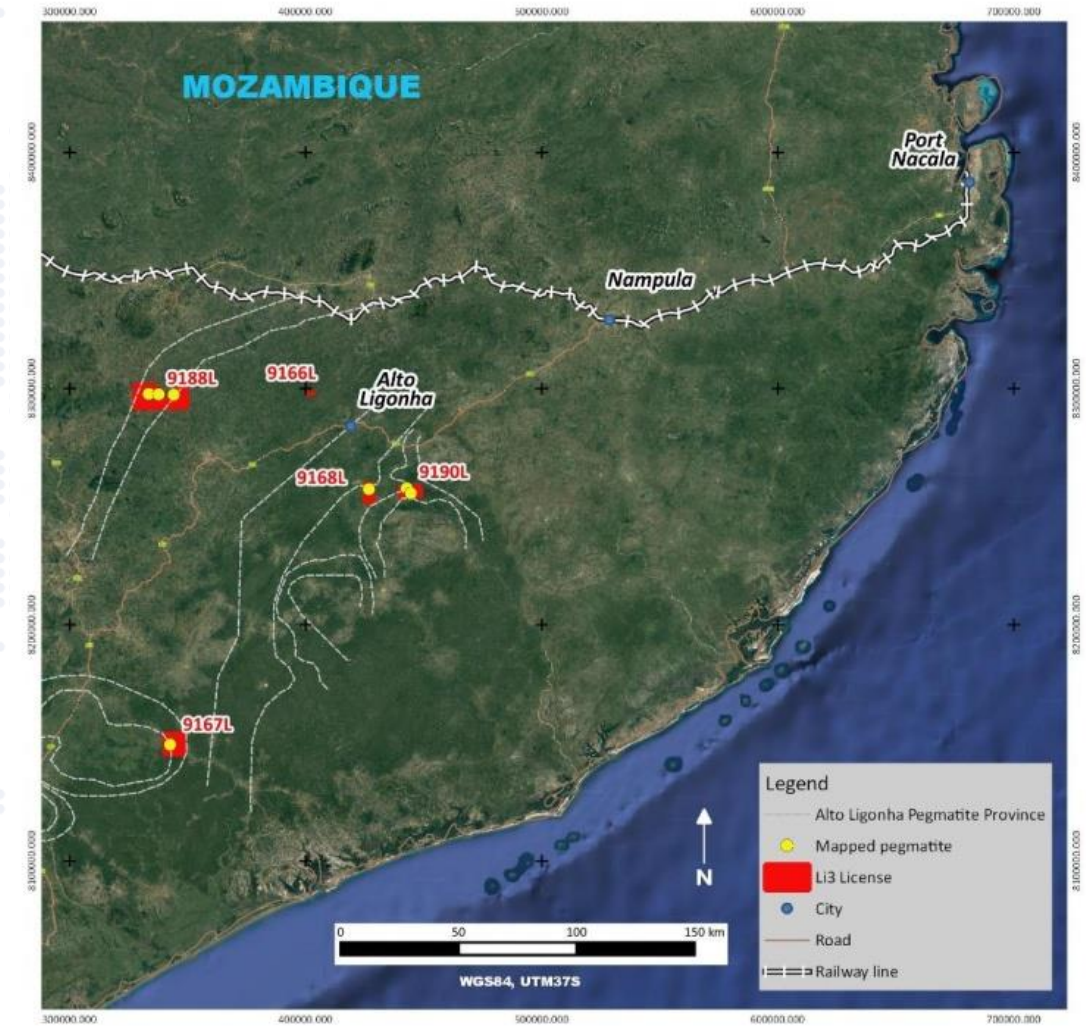


## Competent Persons Statement

The scientific and technical information contained within this Presentation is based on, and fairly represents information prepared by Mr. Andrew Haythorpe, a Competent Person who is a Chartered Geologist and a Fellow of the Australian Minerals Institute. Mr. Haythorpe is the Chief Executive Officer of Lithium Consolidated Limited and has sufficient experience that is relevant to the style of mineralisation and type of deposit under consideration and to the activity being undertaken to qualify as a Competent Person as defined in the 2012 Edition of the “Australasian Code for Reporting of Exploration Results, Mineral Resource and Ore Reserves”. Mr Haythorpe consents to the inclusion in this presentation of the matters based on his information in the form and context in which it appears.

# Mozambique Lithium Projects

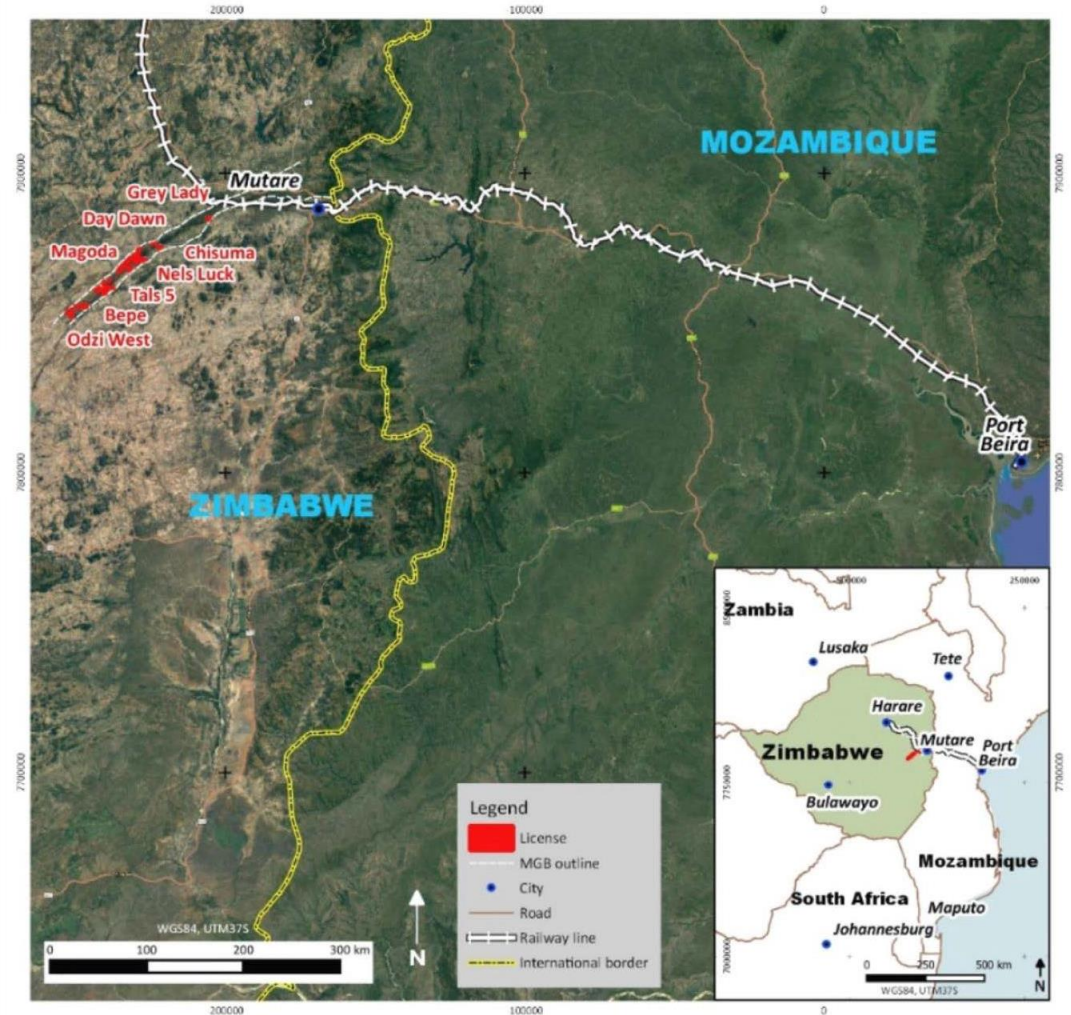
- The Company has established a significant land position in the Alto Ligonha Pegmatite Province in northern Mozambique through the ownership of five exploration licenses over an area of 31,481ha
- Li3 is the first ASX-listed company to enter Mozambique for hard-rock lithium in an area where pegmatites were historically exploited for their beryl, rare-earth minerals and gemstones making the country the second largest beryl producer in the world during the 1960s
- The Alto Ligonha Pegmatite Province (ALPP) encompasses most pegmatites within Mozambique
- Outcropping pegmatites are interpreted in our five licenses and have potential for extensions at shallow depths, which may be confirmed through modern lithium-focused exploration.



Location plan of the Mozambique assets over Google imagery



- Li3 has established a dominant land position in the Mutare Greenstone Belt in eastern Zimbabwe, through eight lithium exploration assets consisting of a total of 72 Licenses over an area of 2,803ha, where 59 have been granted (1,800ha) and the remainder are pending grant
- Li3 is one of the first ASX-listed companies to enter Zimbabwe for hard-rock lithium despite Zimbabwe being a known lithium province and ranked as the fifth largest lithium producer globally, based on production from a single mine, the Bikita mine
- The Mutare Greenstone Belt is believed to be highly prospective for pegmatite hosted lithium deposits based on historical information and recent image analysis, in which flat-lying pegmatites with potential for open-pit mining were interpreted.



Location plan of the Zimbabwe assets over Google imagery