

Real Energy & Strata X Energy

Project Venus proposed 2020 program



Real Energy Corporation Limited (ASX: RLE) &
Strata- X Energy Limited (ASX:SXA)



Disclaimer

Extent of Information

This document has been prepared by Real Energy Corporation Limited (“Real Energy” or “Company”).

This Presentation, including the information contained in this disclaimer, does not constitute an offer, invitation or recommendation to subscribe for or purchase any security and neither the Presentation, disclaimer nor anything contained in such forms the basis of any contract or commitment. This Presentation does not take into account your individual investment objective, financial situation or particular needs. You must not act on the basis of any other matter contained in this Presentation but must make your own assessment of the Company.

No representation, express or implied, is made as to the fairness, accuracy, completeness or correctness of the information contained in this Presentation, including the accuracy, likelihood of the achievement or reasonableness of any forecast, prospects, returns or statements in relation to future matters contained in the Presentation (“Forward-looking statements”). Any such forward-looking statements that are contained in this Presentation or can be implied by the same are by their nature subject to significant uncertainties and contingencies associated with the oil and gas industry and are based on a number of estimates and assumptions that are subject to change (and in many cases are outside the control of Real Energy and its directors) which may cause the actual results or performance of Real Energy to be materially different from any future results or performance expressed or implied by such forward-looking statements.

To the maximum extent permitted by law, none of Real Energy’s, or related corporations, directors, employees, agents nor any other person accepts and liability, including without limitation arising from fault or negligence, for any loss arising from use of this Presentation or its content or otherwise arising in connection with it.

Exclusion of Financial Product Advice

This Presentation is for information purposes only and is not a prospectus or other offering under Australian law or under any other laws in the jurisdictions where the Presentation might be available. Nothing herein constitutes investment, legal, tax or other advice. This Presentation is not a recommendation to acquire shares and has been prepared without taking into account the investment objectives, financial situation or needs of individuals.

Independent Advice

You should consider the appropriateness of the information having regard to your own objectives, financial situation and needs and seek appropriate advice, including, legal and taxation advice appropriate to your jurisdiction. Real Energy is not licensed to provide financial advice in respect of its shares.

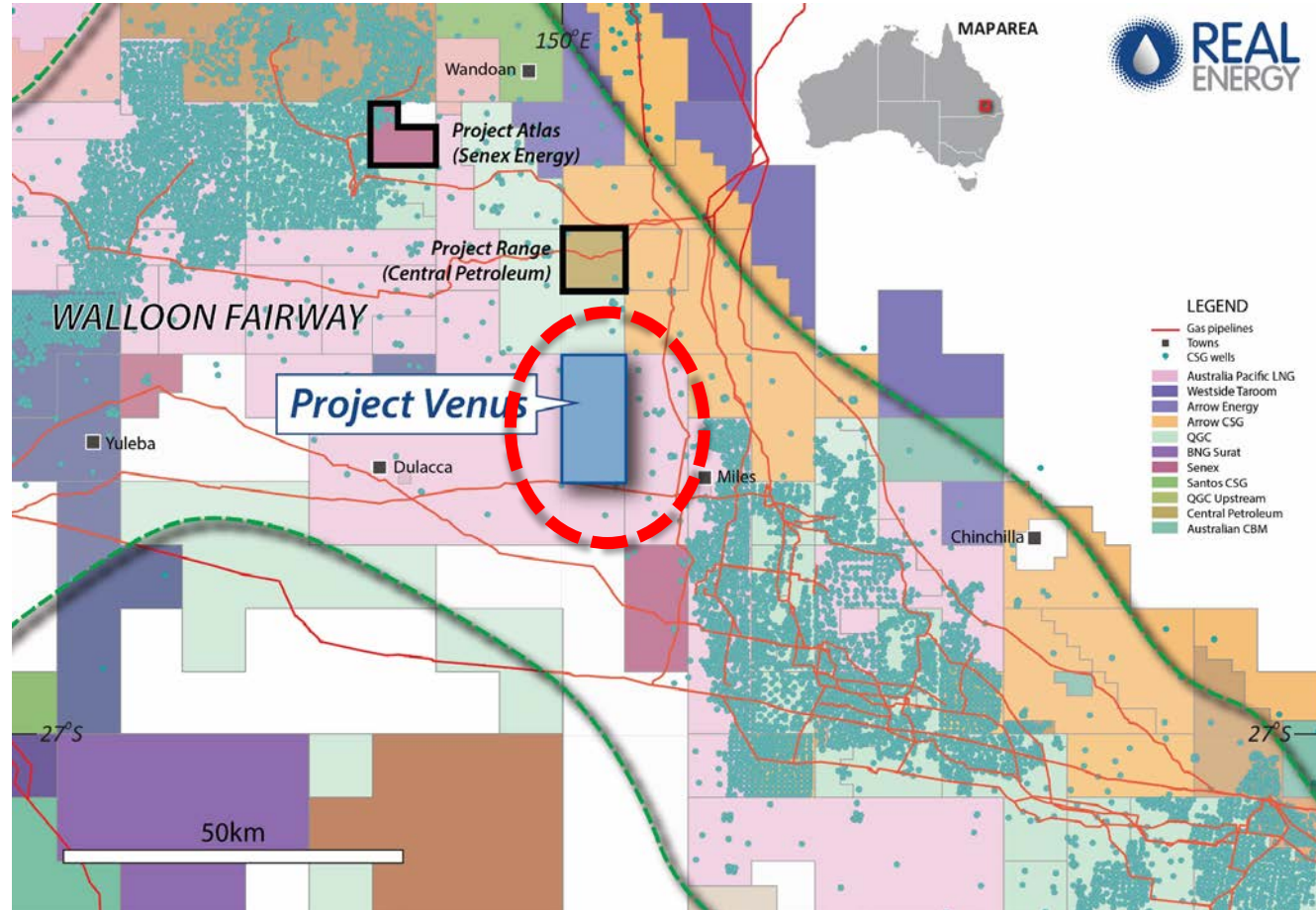
Geological Information

The geological information in this presentation relating to geological information and resources is based on information compiled by Mr Lan Nguyen, who is a Member of Petroleum Exploration Society of Australia, the American Association of Petroleum Geologists, and the Society of the Petroleum Engineers and has sufficient experience to qualify as a Competent Person. Mr Nguyen consents to the inclusion of the matters based on his information in the form and context in which they appear. The information related to the results of drilled petroleum wells has been sourced from the publicly available well completion reports.

Project Venus permit granted as ATP 2051 on March 26

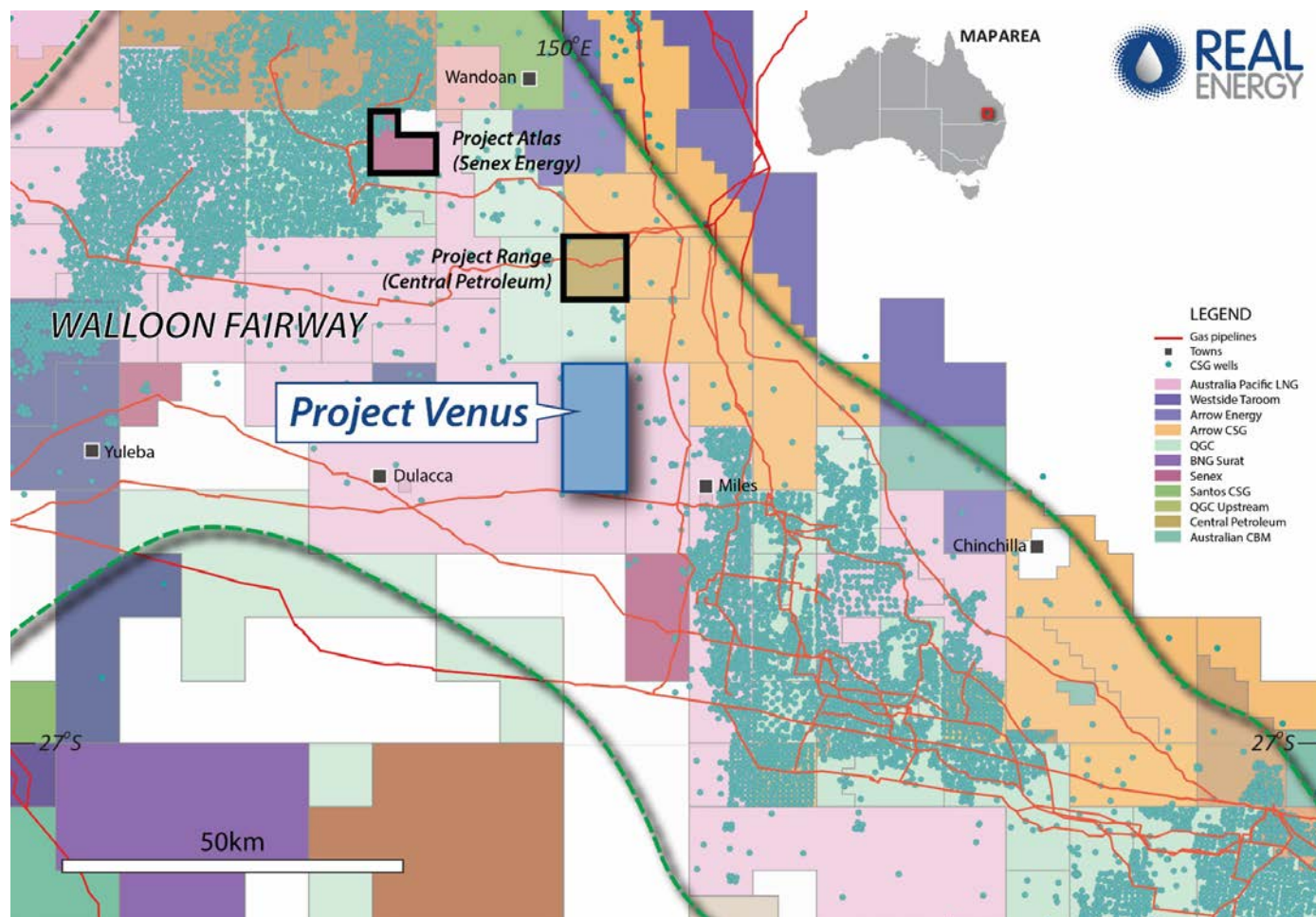
ATP 2051 Project Venus

- ◆ Real Energy and Strata-X Energy JV (50/50)
- ◆ Real Energy operator
- ◆ 50 sub-blocks = 154 km²
- ◆ ~9km west of Miles
- ◆ Walloon Subgroup Coal measures CSG targets are pervasive throughout permit
- ◆ **Prospective Gas Resources = Best Estimate 694 PJ for 100%**
- ◆ Adjacent to gas pipelines with access.

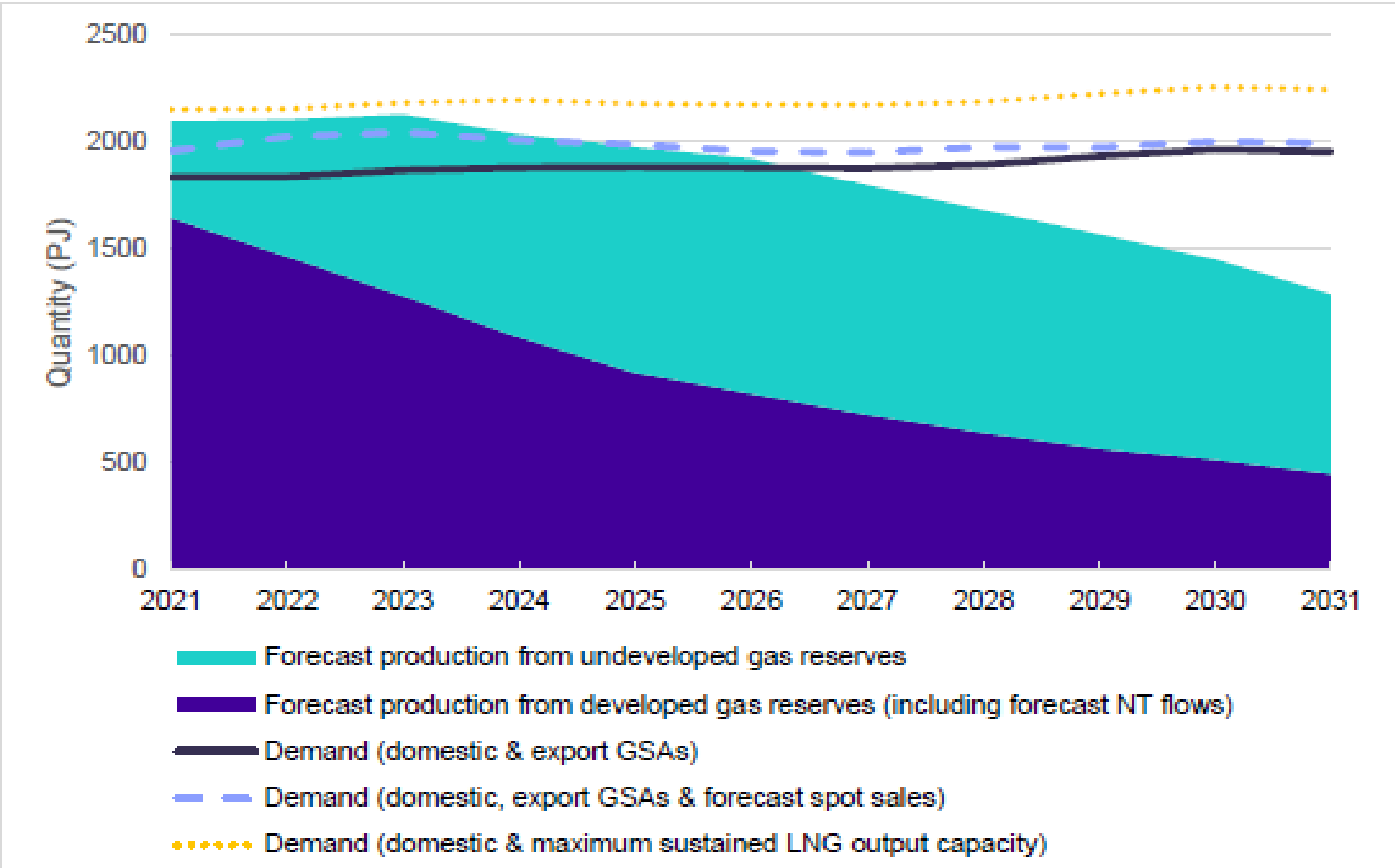


Project Venus is located within the Proven Walloon CSG Fairway

- A prolific CSG producing region with over 4,000 wells drilled – see green dots on Map
- The Ironbark Project was sold for \$231M with reported reserves of 129PJ¹
- Senex Energy² is developing Project Atlas – reported 2P reserves 144 PJ
- Central Petroleum² is developing Project Range – reported 2C contingent resources of 270 PJ

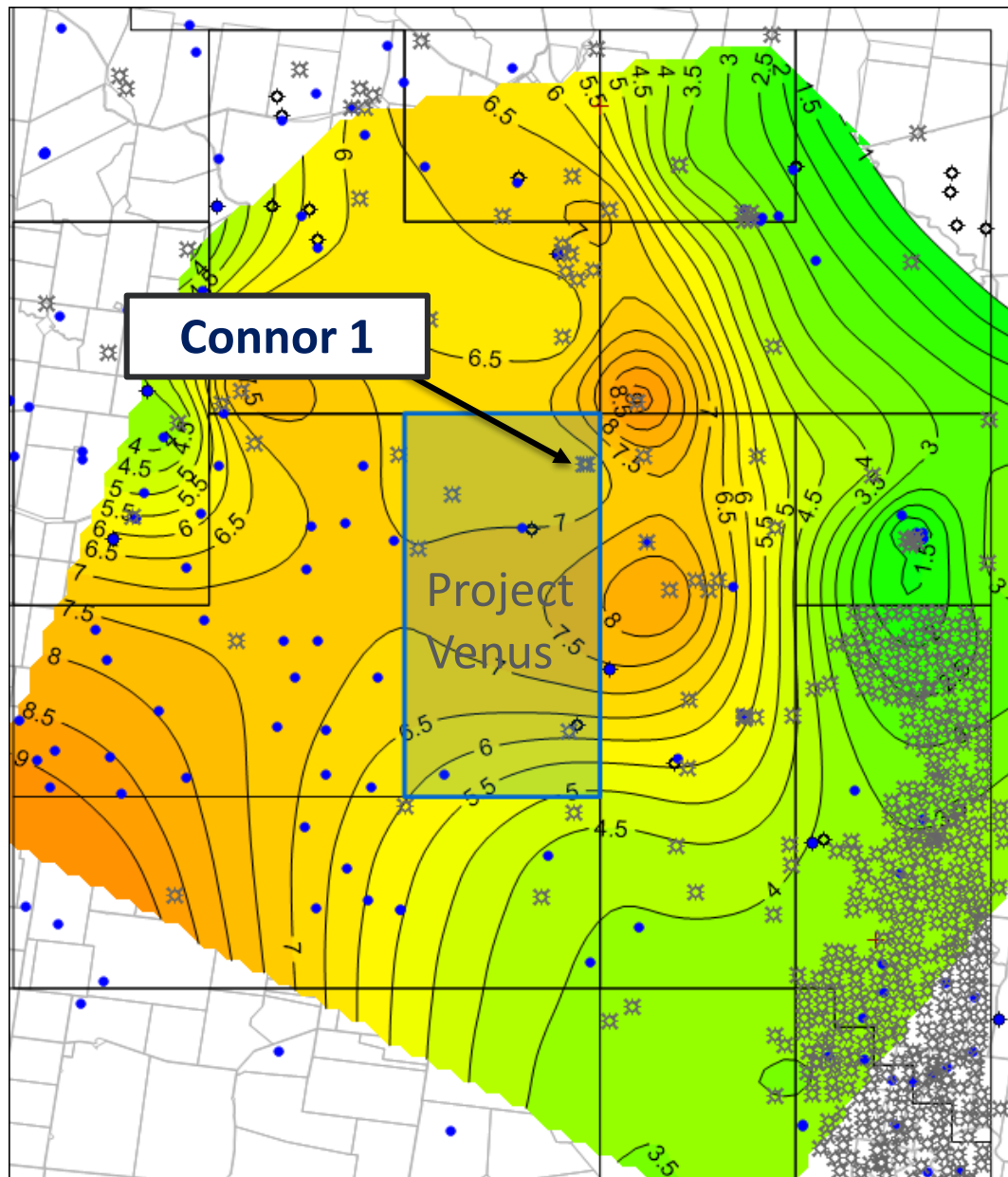


East Coast Gas Market Forecast Supply Shortage vs Demand 2021–2031



Source: ACCC Interim Report Gas Enquire 2017 - 2025

Project Venus has nearby gas fields and CSG wells with high gas saturations



Project Venus Bcf/km²

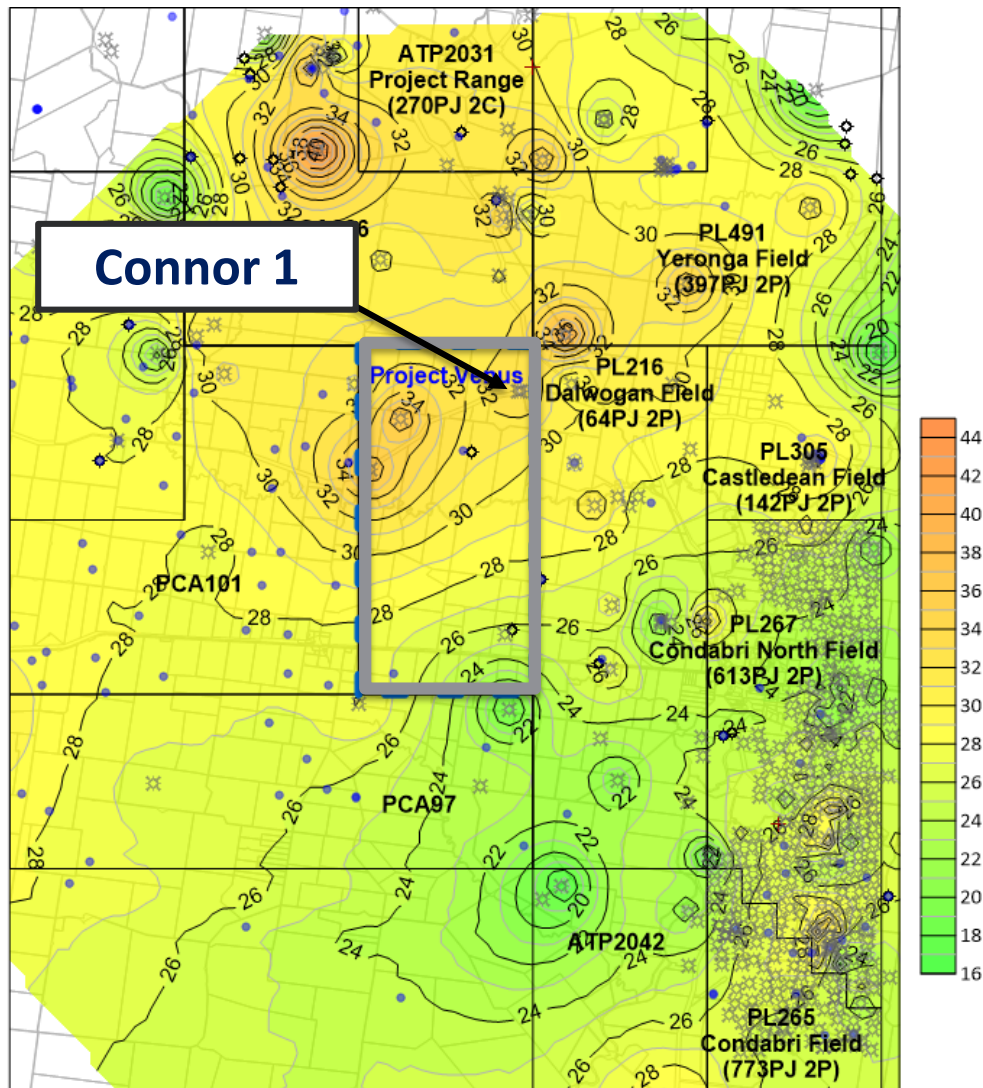
- 💧 > 1200 PJ 2P reserves in nearby CSG fields*
- 💧 Previous CSG wells in permit include 4 Connor wells (QGC) plus Goonlah-1 (APLNG)
- 💧 Upper Walloon Coals seams in the Connor-2 core hole, adjacent to Connor-1, had ~100% gas saturations
- 💧 No CSG wells in permit properly flow tested

Source: Map - Avadale Energy Pty Ltd

Notes:

2P reserve numbers in adjacent Petroleum Leases are based on DNRME reported remaining reserves as at 31/12/2018
<https://www.data.qld.gov.au/dataset/petroleum-gas-production-and-reserve-statistics>
Based on public domain CSG core exploration, appraisal & development wells
(QDEX - Queensland Digital Exploration Reports <https://qdexquest.dnrm.qld.gov.au/portal/site/qdex/search>)

Walloon Coals in Connor-1 area have strong CSG attributes



Project Venus - Walloon Subgroup Net Coal (m)

Previously drilled Connor-1 has:

- ✓ 34 metres of net Walloon coals
- ✓ ~100% gas saturations in upper Walloon coals (upper 25 metres)
- ✓ Permeability in upper Walloon coals in Connor-1 and surrounding wells
- ✓ Connor-1 was never properly flow tested

Notes:
2P reserve numbers in adjacent Petroleum Leases are based on DNRME reported remaining reserves as at 31/12/2018
<https://www.data.qld.gov.au/dataset/petroleum-gas-production-and-reserve-statistics>
Net Coal based on public domain CSG core exploration, appraisal & development wells
(QDEX - Queensland Digital Exploration Reports <https://qdexquest.dnrm.qld.gov.au/portal/site/qdex/search>)

Connor-1 Re-entry and flow test to prove water flow rates and induce gas breakout

- ◆ Plan to use Coil Tubing to drill out cement and mill bridge plug
- ◆ Then carry out Coil Tubing abrasive perforations enhancement of coal seams between 410 and 645 metres to make ready for flow testing



Connor-1 site is clear of trees, flat with easy access

Connor-1 Re-entry

Using small footprint Wellpro Coil tubing unit.

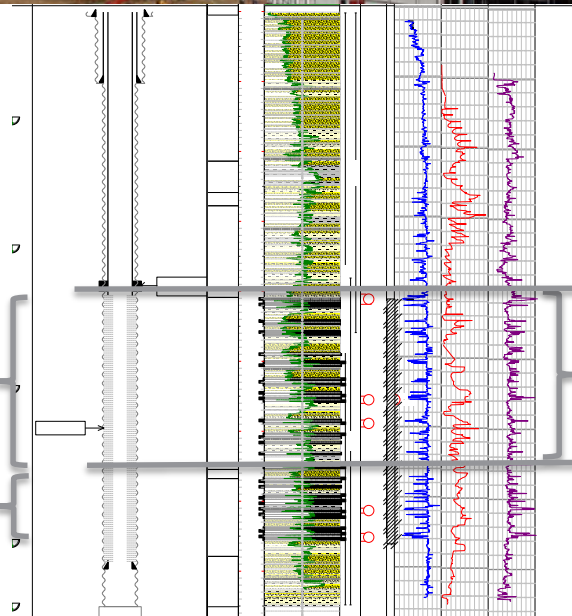


Current Downhole:

Cement from surface to
bridge plug at 384 metres

~100% gas saturated seams

Undersaturated seams



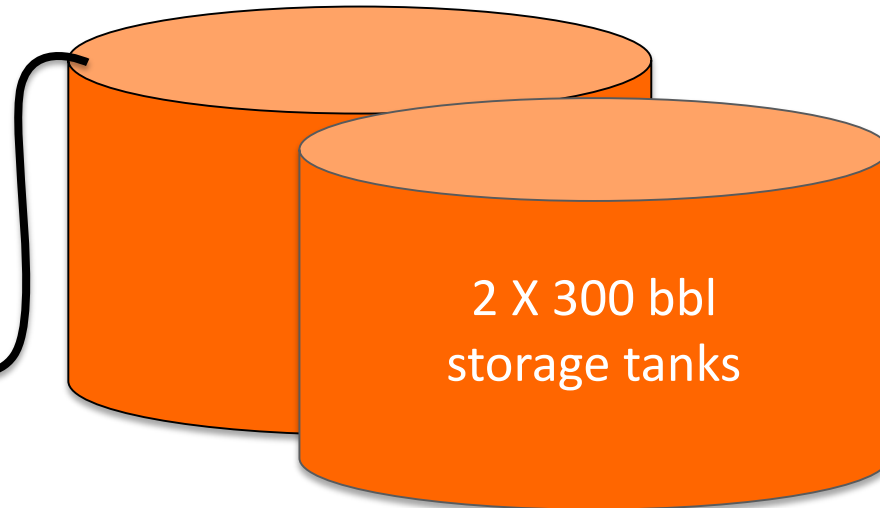
Re-entry Program:

1. Drill out cement to 384 metres.
2. Mill bridge plug.
3. Abrasive perforations of coals seams from 410 to 645 metres.
4. Flow test using water test rig.

Flow testing program of Connor-1 re-entry



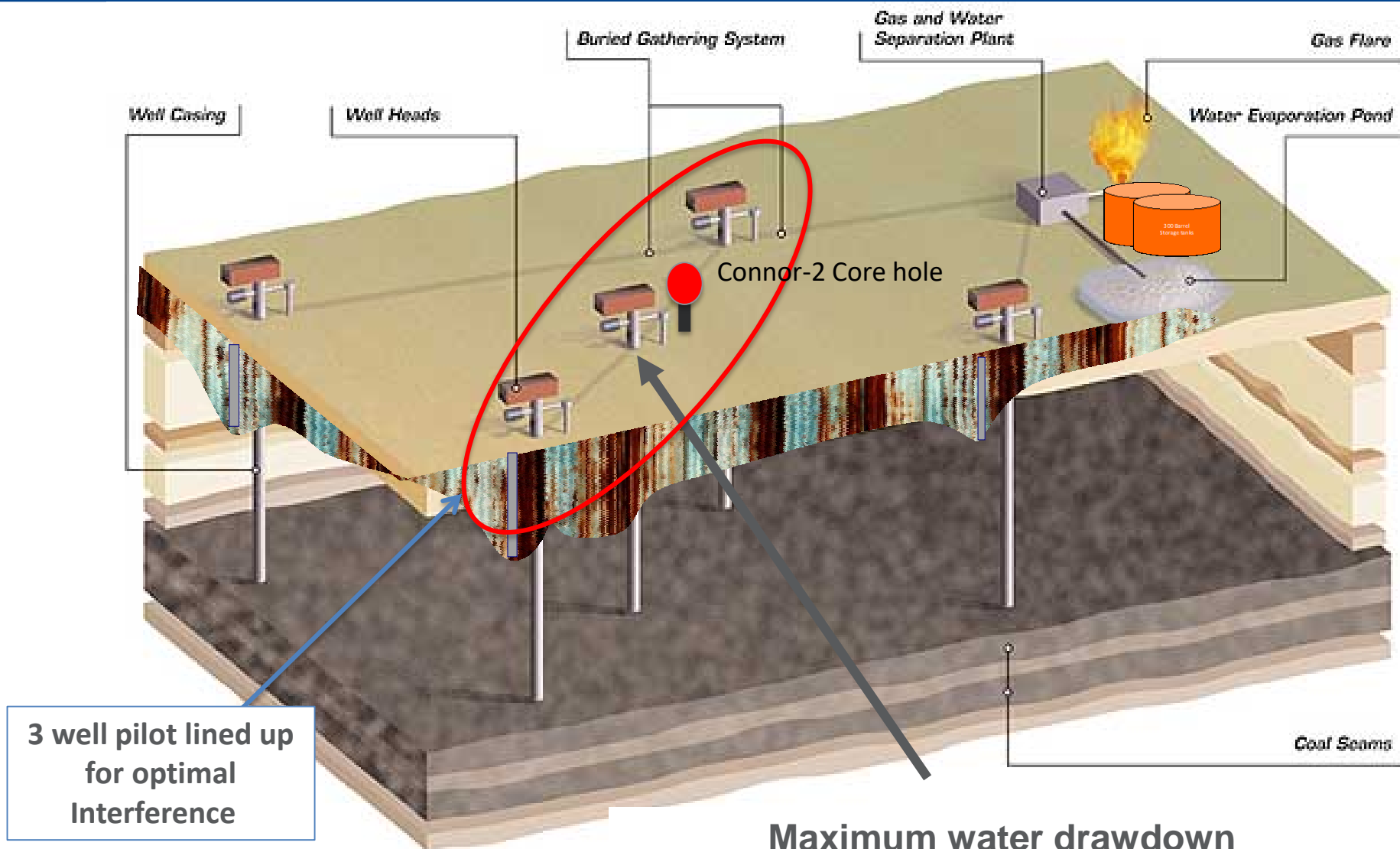
Flow test using bore hole testing rig



1. Controlled draw down to determine water influx, induce gas breakout.
2. Storage tanks to be used to store water from flow testing.

Initial 3 well CSG pilot with 2 wells ~400 m offset from Connor-1 re-entry

Pilot located adjacent to core hole with 100% gas saturations in upper Walloon coal seams



Pilot Development Layout

Timing of ATP 2051 Connor-1 re-entry and CSG pilot

Connor-1 re-entry and flow testing:

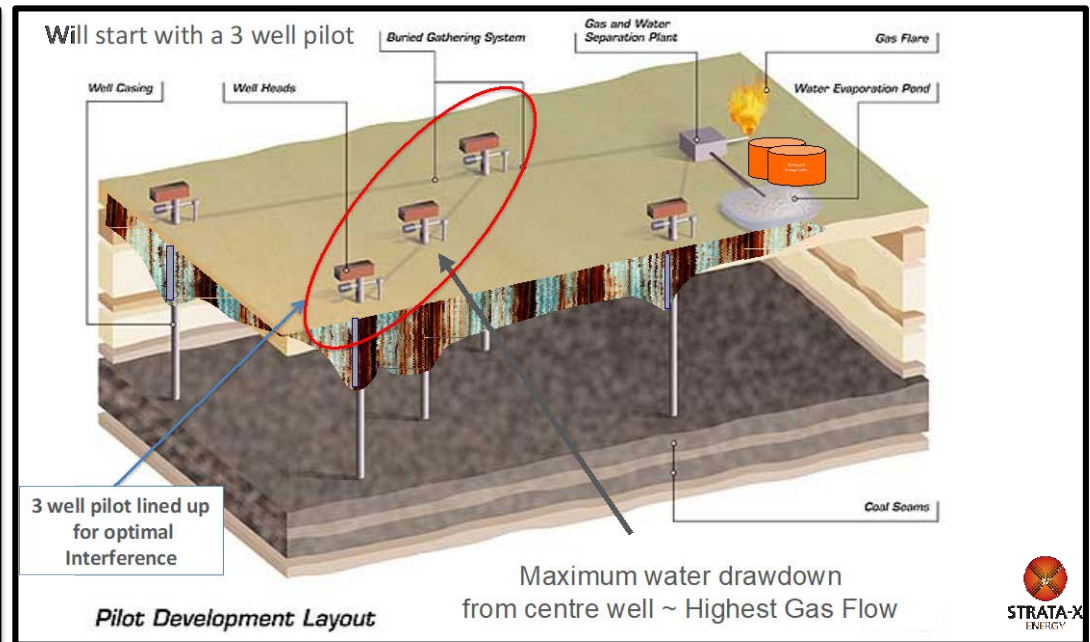
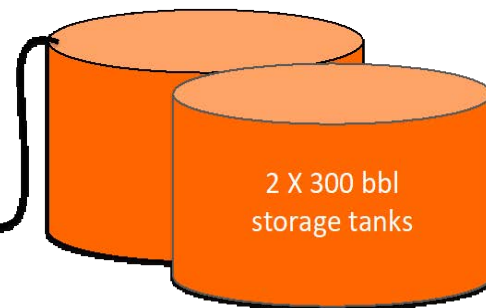
Wellpro selected as contractor. Final timing to be confirmed. Field trip to site next week.

Connor CSG Pilot:

3-well pilot to be firmed after results of Connor-1 re-entry, likely 3rd to 4th quarter of 2020.



Flow test using bore hole testing rig





QUESTIONS?

Contact

Scott Brown – Managing Director
Ph: +61 2 9955 4008
E: scott.brown@realenergy.com.au

Real Energy Corporation Limited
Level 3, 32 Walker Street
North Sydney NSW 2060
Australia



REAL
ENERGY