

9 July 2020

## Infigen announces June 2020 monthly production

Infigen (ASX: IFN) today reported unaudited production for June 2020 as follows:

Wind Farm <sup>1</sup>	State	June			FYTD		
		2020 (GWh)	2019 (GWh)	Variance (%)	FY20 (GWh)	FY19 (GWh)	Variance (%)
Alinta	WA	21	23	(9)	311	342	(9)
Bodangora	NSW	25	24	2	353	224	n/m
Capital	NSW	24	20	24	406	359	13
Lake Bonney 1	SA	16	16	(4)	182	200	(9)
Lake Bonney 2	SA	29	33	(12)	361	371	(3)
Lake Bonney 3	SA	7	9	(20)	97	97	-
Woodlawn	NSW	11	9	26	166	147	13
Production Generated from Owned Renewable Energy Assets <sup>2</sup>		133	134	-	1,877	1,740	8
Production Sold from Owned Renewable Energy Assets <sup>3</sup>		129	128	1	1,827	1,684	9
Production purchased and sold from Contracted Assets <sup>4</sup>		11	9	n/m	131	92	n/m
Renewable Energy Generation Sold		140	137	n/m	1,959	1,775	10

During June 2020, Production Sold from the Smithfield OCGT was 3GWh. Smithfield is a gas peaking facility where annual capacity utilisation is expected to be in the range of 2-8%, with significant variations in output expected from month to month.

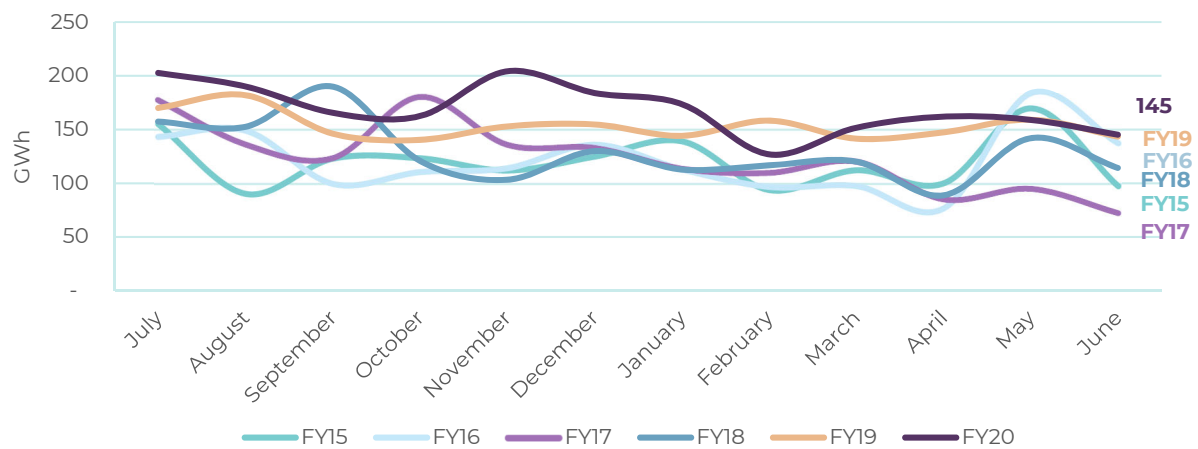
<sup>1</sup> Some totals may not add down the column or across the row (where applicable) due to rounding of individual components. Variance is reported as a percentage and is based on unrounded figures.

<sup>2</sup> Owned Renewable Energy Assets refers to Infigen's seven owned wind farms.

<sup>3</sup> Production Generated is subject to marginal loss factors (MLFs) that are fixed annually by the Australian Energy Market Operator to account for network losses. Production Sold reflects the impact of these MLFs.

<sup>4</sup> Contracted Assets refer to production acquired under run of plant PPAs where Infigen is the offtaker. Production from Contracted Assets commenced with Kiata Wind Farm in September 2018 and includes Toora Wind Farm from January 2020.

## Monthly Renewable Energy Generation Produced in current and prior Financial Years<sup>5</sup>:



Further details in relation to Production Generated is reported in Appendix 1. Further details in relation to Production Sold is reported in Appendix 2.

## Ends

This announcement was authorised by: Managing Director and Chief Executive Officer, Ross Rolfe AO.

For further information please contact:

### Peter Campbell

General Manager, Investor Relations

[Peter.Campbell@InfigenEnergy.com](mailto:Peter.Campbell@InfigenEnergy.com)

+61 2 8031 8870

## About Infigen

Infigen is leading Australia to a clean future, today. Our strategy is to provide Australian businesses with firm supplies of reliable and competitively priced clean energy.

We generate renewable energy from our fleet of owned wind farms. We also source renewable energy from our portfolio of contracted assets. We manage intermittency risk with our fast start assets, enabling us to provide our customers with firm prices and firm volumes for renewable energy.

For more information, please visit: [www.infigenenergy.com](http://www.infigenenergy.com)

<sup>5</sup> Monthly Production Generated from Owned Renewable Energy Assets and Contracted Assets. Production from the Bodangora Wind Farm commenced in August 2018. Production from Contracted Assets commenced in September 2018.

## Appendix 1

### Monthly Renewable Energy Generation Produced (GWh) in current and prior Financial Years:

Wind Farm	Alinta	Bodangora	Capital	Lake Bonney 1	Lake Bonney 2	Lake Bonney 3	Woodlawn	Contracted Assets	Total
<b>FY20<sup>6</sup></b>									
July	22	30	41	23	45	12	18	12	203
August	27	26	42	19	38	11	17	11	190
September	23	30	37	14	28	8	15	10	166
October	30	29	29	14	29	9	12	10	162
November	37	30	43	18	36	11	17	13	204
December	28	29	40	17	34	9	16	11	184
January	36	31	32	14	28	7	12	14	174
February	21	33	33	4	8	2	12	14	127
March	24	36	23	12	26	6	9	16	152
April	19	25	36	15	30	7	16	15	162
May	24	29	26	17	29	8	11	14	159
June	21	25	24	16	29	7	11	12	145
Total	311	353	406	182	361	97	166	151	2,028

<b>FY19<sup>6</sup></b>									
July	19	-	46	28	46	12	19	-	170
August	25	1	47	27	50	13	19	-	182
September	24	6	30	17	36	10	12	11	146
October	26	9	30	14	30	8	12	12	140
November	34	18	35	13	24	6	13	10	153
December	38	25	25	13	26	7	10	10	155
January	39	27	23	10	20	5	10	9	144
February	30	33	25	14	29	8	10	9	158
March	30	27	26	12	21	5	11	9	142
April	24	31	20	15	32	9	8	9	147
May	31	22	32	21	23	6	14	11	159
June	23	24	20	16	33	9	9	10	143
Total	342	224	359	200	371	97	147	101	1,841

<sup>6</sup> Some totals may not add down the column or across the row (where applicable) due to rounding of individual components.

## Appendix 2

### Monthly Renewable Energy Generation Sold (GWh) in current and prior Financial Years:

Wind Farm	Alinta	Bodangora	Capital	Lake Bonney 1	Lake Bonney 2	Lake Bonney 3	Woodlawn	Contracted Assets	Total
<b>FY20<sup>7</sup></b>									
July	22	29	40	22	44	12	17	10	196
August	27	25	41	18	37	11	16	9	184
September	23	28	36	14	27	8	15	8	160
October	30	27	28	14	29	9	11	9	157
November	37	28	42	17	35	10	17	11	197
December	28	28	39	17	34	8	15	9	178
January	36	29	31	13	28	7	12	12	168
February	21	31	32	4	8	2	12	12	122
March	24	34	22	12	25	6	9	14	146
April	19	24	35	15	29	7	15	13	157
May	24	28	26	17	29	7	11	12	154
June	21	24	24	16	28	7	11	11	140
<b>Total</b>	<b>311</b>	<b>335</b>	<b>394</b>	<b>178</b>	<b>353</b>	<b>95</b>	<b>161</b>	<b>131</b>	<b>1,959</b>

<b>FY19<sup>7</sup></b>									
July	19	-	46	25	42	11	20	-	163
August	25	-	48	25	46	12	19	-	175
September	24	6	30	16	33	9	12	10	140
October	26	9	30	13	27	7	12	11	135
November	34	18	35	12	22	6	13	9	148
December	38	24	26	12	24	6	10	9	150
January	39	27	24	9	19	5	10	8	140
February	30	33	25	13	27	7	10	8	153
March	30	27	27	11	19	5	12	9	137
April	24	30	20	14	29	8	8	8	142
May	31	22	32	19	21	5	14	10	154
June	23	24	20	15	30	8	9	9	137
<b>Total</b>	<b>342</b>	<b>220</b>	<b>364</b>	<b>184</b>	<b>339</b>	<b>90</b>	<b>149</b>	<b>92</b>	<b>1,775</b>

<sup>7</sup> Some totals may not add down the column or across the row (where applicable) due to rounding of individual components.