



INVESTIGATOR
RESOURCES
LIMITED

Virtual Gold Conference

August 2020

Paris – Australia's highest-grade Ag project

ASX : IVR

Andrew McIlwain
Managing Director

Disclaimer and competent person statement

DISCLAIMER

The information in this presentation is published to inform you about Investigator Resources Limited and its activities. Some statements in this presentation regarding estimates or future events are forward looking statements. They involve risk and uncertainties that could cause actual results to differ from estimated results. All reasonable effort has been made to provide accurate information, but we do not warrant or represent its accuracy and we reserve the right to make changes to it at any time without notice.

To the extent permitted by law, Investigator Resources Limited accepts no responsibility or liability for any losses or damages of any kind arising out of the use of any information contained in this presentation. Recipients should make their own enquiries in relation to any investment decisions.

COMPETENT PERSONS STATEMENT

The information in this presentation relating to exploration results is based on information compiled by Mr. Jason Murray who is a full time employee of the company. Mr. Murray is a member of the Australasian Institute of Mining and Metallurgy. Mr. Murray has sufficient experience of relevance to the styles of mineralisation and the types of deposits under consideration, and to the activities undertaken, to qualify as a Competent Person as defined in the 2012 Edition of the Joint Ore Reserves Committee (JORC) Australasian Code for Reporting of Exploration Results, Mineral Resources and Ore Reserves. Mr. Murray consents to the inclusion in this report of the matters based on information in the form and context in which it appears.

The information in this presentation that relates to Mineral Resources Estimates at the Paris Silver Project is extracted from the report "Significant 26% upgrade for Paris Silver Resource to 42Moz contained silver" lodged with the ASX on 19 April 2017 and is available to view on the Company's website www.investres.com.au. Previous resource reports were lodged with the ASX on 9 November 2015 and 15 October 2013. The Company confirms that it is not aware of any new information or data that materially affects the information included in the original market announcement and that all material assumptions and technical parameters underpinning the estimates in the relevant market announcement continue to apply and have not materially changed. The company confirms that the form and context in which the Competent Person's findings are presented have not been materially modified from the original market announcement.

ASX:IVR

Andrew McIlwain
Managing Director

What do you need to know about Investigator?

- ASX listed – IVR
- Absolute leverage to Silver price
- Paris Silver Project:
 - 100% IVR owned
 - 43Moz Ag - JORC (2012) Resource
 - Regional exploration potential
- Reviewing domestic precious metals projects for diversification
- Experienced and capable Board



Corporate



Notes:

- 1: - IVROA - listed options 204M @ 3.5c expiring 31 Dec 2020
- 2: - unlisted employee options – 24M @ 3.5c expiring 20 Nov 2022
- 3: - 15M MD perf. rights (various vesting conditions over 3 years to 2022)

Capital Structure - at 14 Aug 2020

ASX code - listed 2007	IVR
Shares - ordinary	1,031M
Options – IVROA - listed ¹	202M
Options - unlisted ²	24M
Performance Rights ³	15M
Share Price – 14 Aug 2020	5.2c
12 Month range	0.8c to 6.4c
Market Cap – 23 July 2020	\$53.6M
Cash* – 14 Aug 2020	~\$8M**
* unaudited	
** +\$2.5M Tranche 2 in September	

Share Register - at 14 Aug 2020

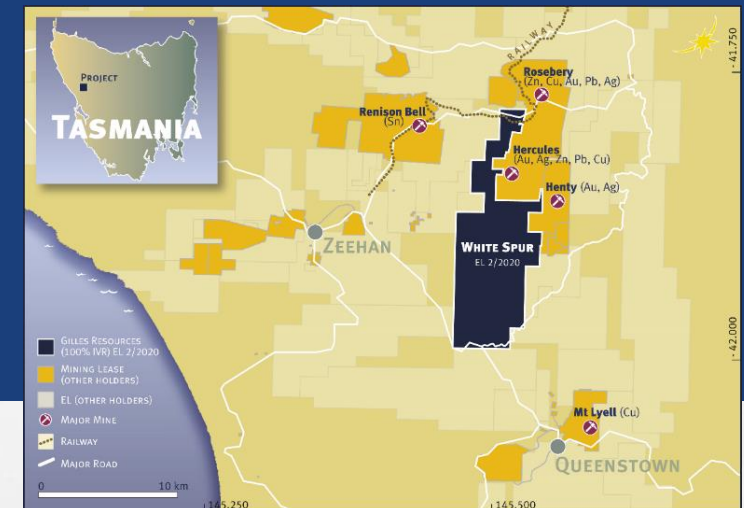
Merian Global Investors	9.35%
Top 20	27%
Total Shareholders	4,076

Board

Kevin Wilson	Non-executive Chairman
Andrew Shearer	Non-executive Director
Andrew McIlwain	Managing Director

Introduction to Investigator

- Tenements in South Australia & Tasmania
- 2011 Paris silver discovery
- 2017 Paris Resource:
 - 9.3Mt @ 139g/t Ag, 0.6% Pb for 42Mozs Ag + 55kt Pb
- Recently granted White Spur tenement in Tasmania
- Actively seeking additional precious metals asset



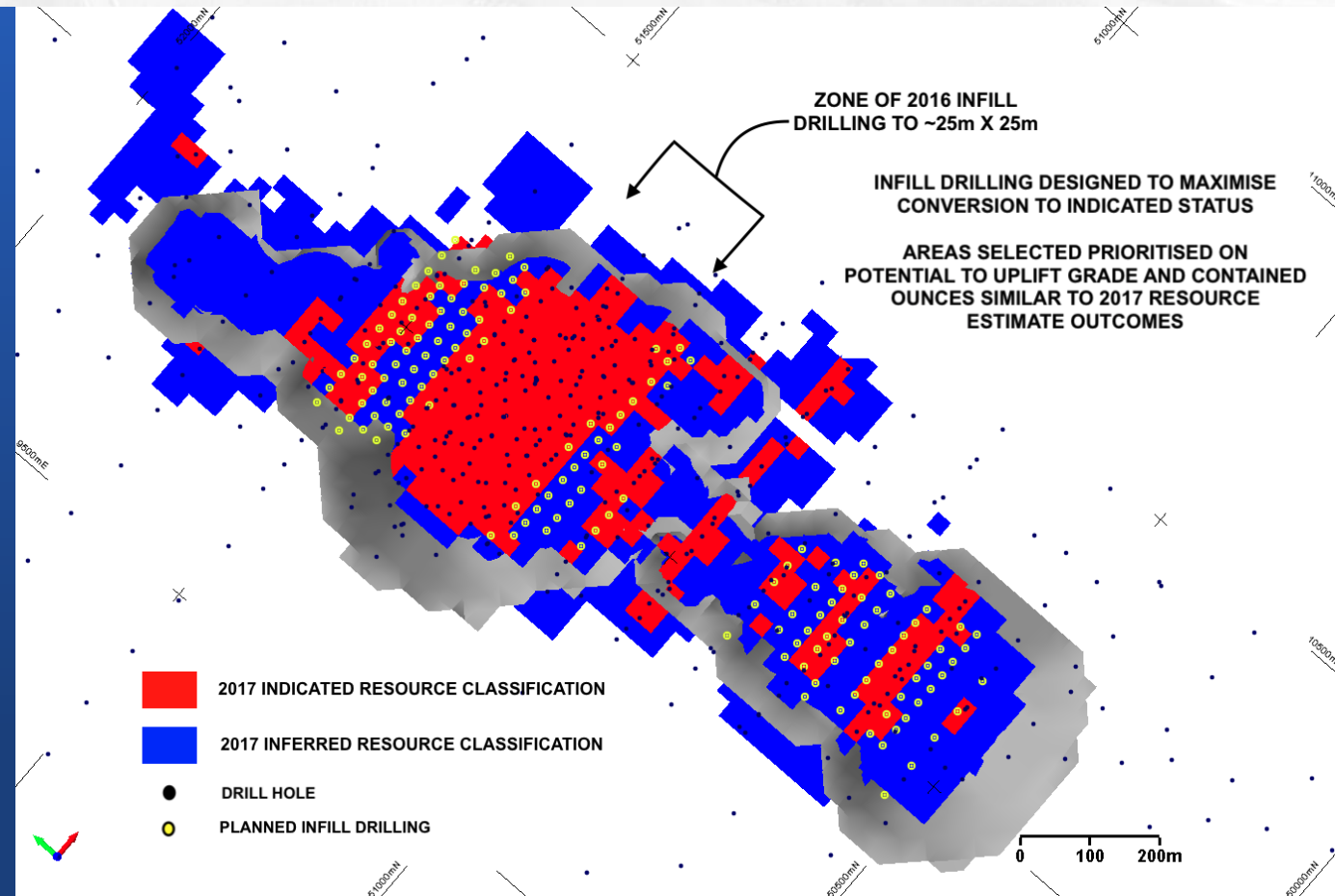
Paris Silver Project

- 2013 Maiden resource:
 - 5.9Mt @ 110g/t Ag, 0.6% Pb = 20Mozs Ag + 38kt Pb
- 2015 Resource:
 - tonnes & Ag ozs +60%
 - 8.8Mt @ 113g/t Ag, for 33Mozs
- 2017 Resource:
 - Ag grade +20%, total Ag ozs + 26%
 - 9.3Mt @ 139g/t Ag, 0.6% Pb for 42Mozs Ag + 55kt Pb
 - (@50g/t cutoff – upside leverage)
- Shallow, flat lying orebody – ~10Mt open pit to 120m
- Scoping study met testwork, flowsheet design, geotech completed
- Silver leach recoveries of between 65% and 89%



Paris Silver Project – Steps to finalise PFS

- Planned infill drill programme:
 - 15,000m
 - Convert Inferred to Indicated Resource
 - Anticipated grade uplift as per 2017
- Open pit mine design & scheduling
- Process flowsheet refinements
- Power & water supply design
- Capex and Opex estimation
- Economic evaluation
- 9 months to complete



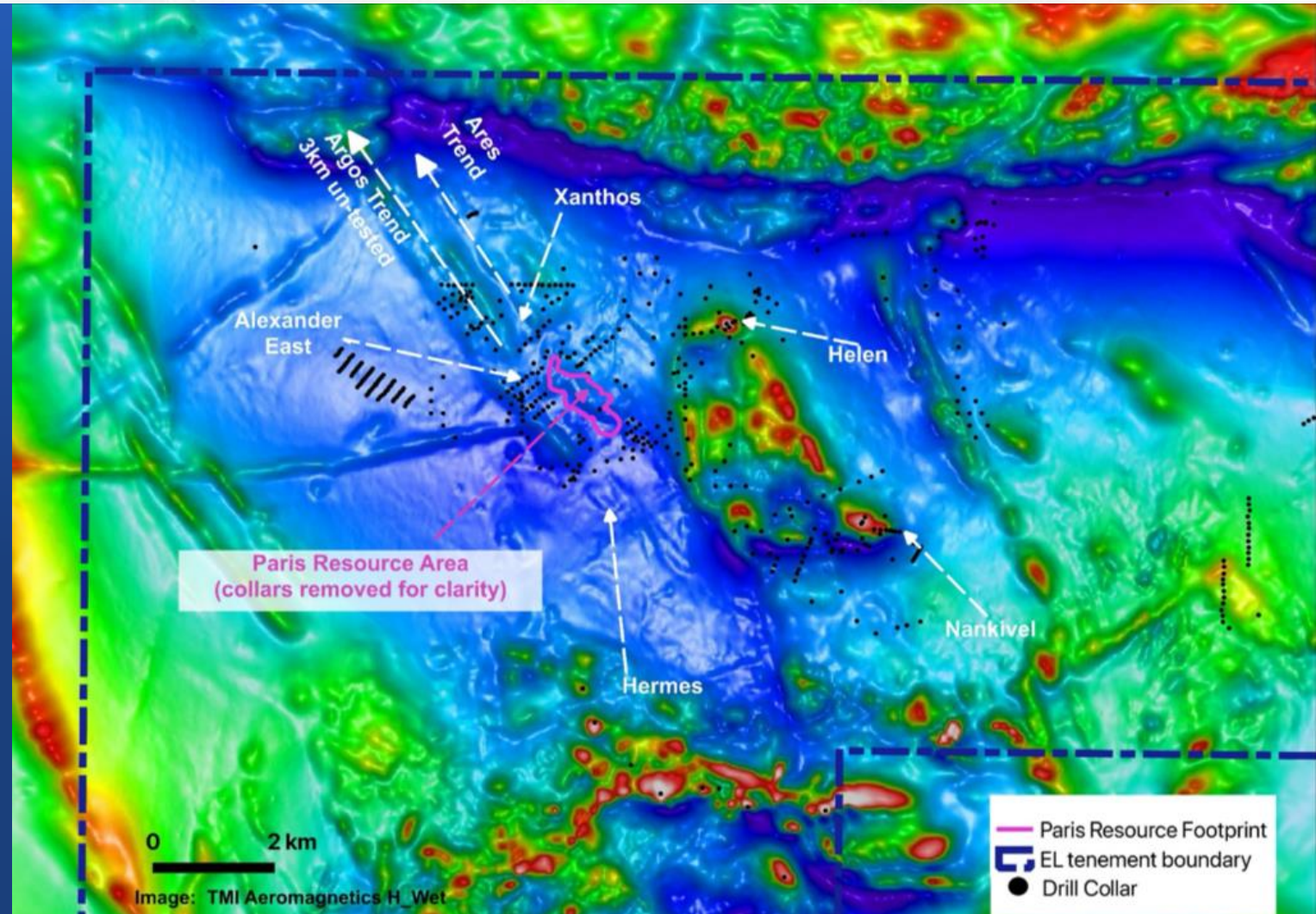


Paris....the highest grade Ag project in Australia

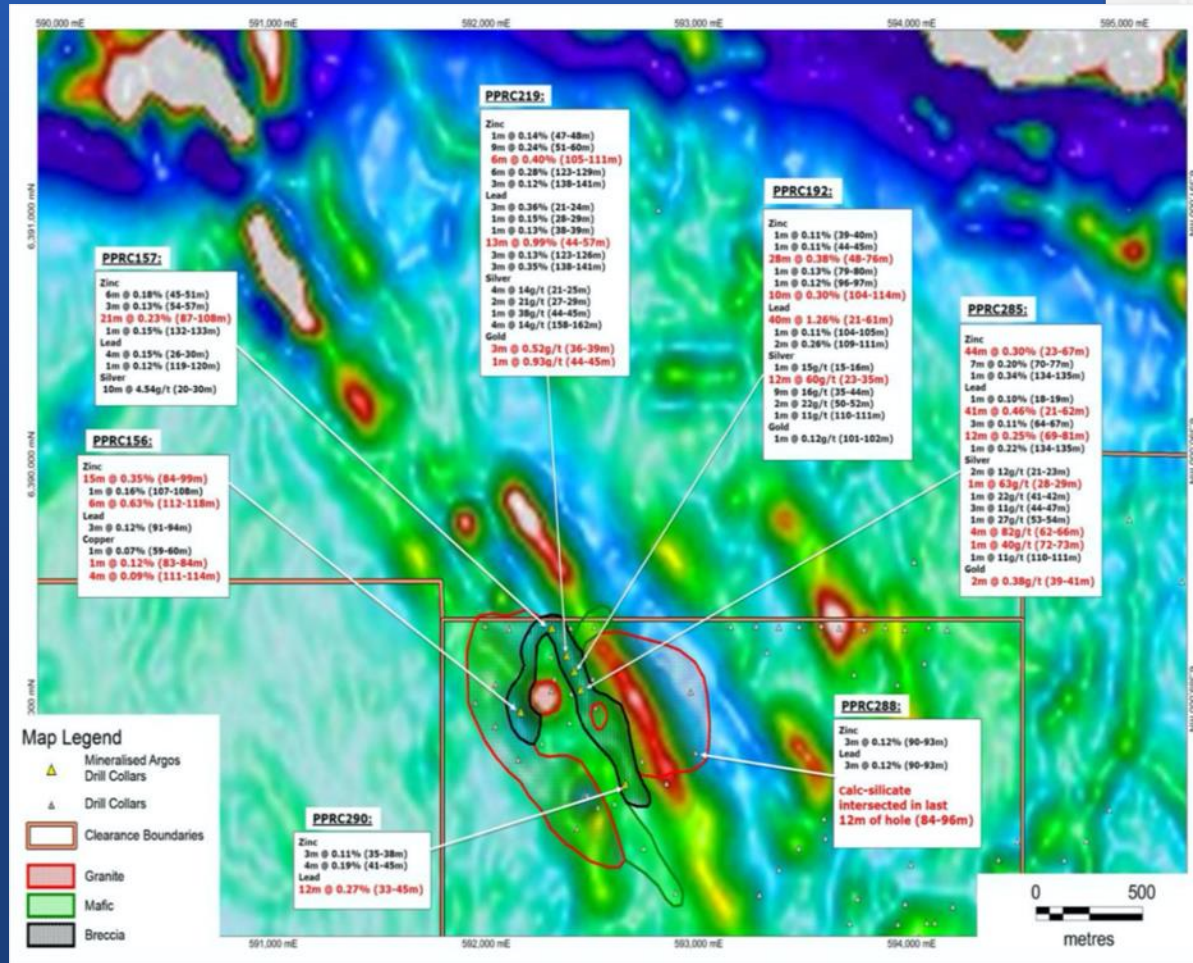
Paris – Regional Exploration

Targets within 5kms of Paris

- **Argos**
 - Gravity & magnetic structure along strike from Paris
- **Xanthos**
 - Fault offset of Paris extension?
- **Helen**
 - 7m @ 531g/t Ag at bottom of hole - needs follow up



Argos – Paris 2.0?



- Gravity & magnetic structure directly along strike of Paris
- Sporadic scout drilling;
 - 12m @ 60g/t Ag
 - 4m@82g/t Ag
 - 1m @ 0.92g/t Au
- Rock chips to 6ppm Ag – limited outcrop
 - Extrusive breccia subcrop identified in petrology
- No drilling along 3km of strike extension due to previous restricted access – now resolved

Other Tenements – South Australia

Stuart Shelf

- Highly prospective Cu & Co sediment hosted Cu (Mt Gunson style/Zambian Cu belt style)
- IOCG potential remains
- Reconnaissance field work commenced

Wiawera

- Prospective for Au, Cu & Ag

Folwer – ELA's

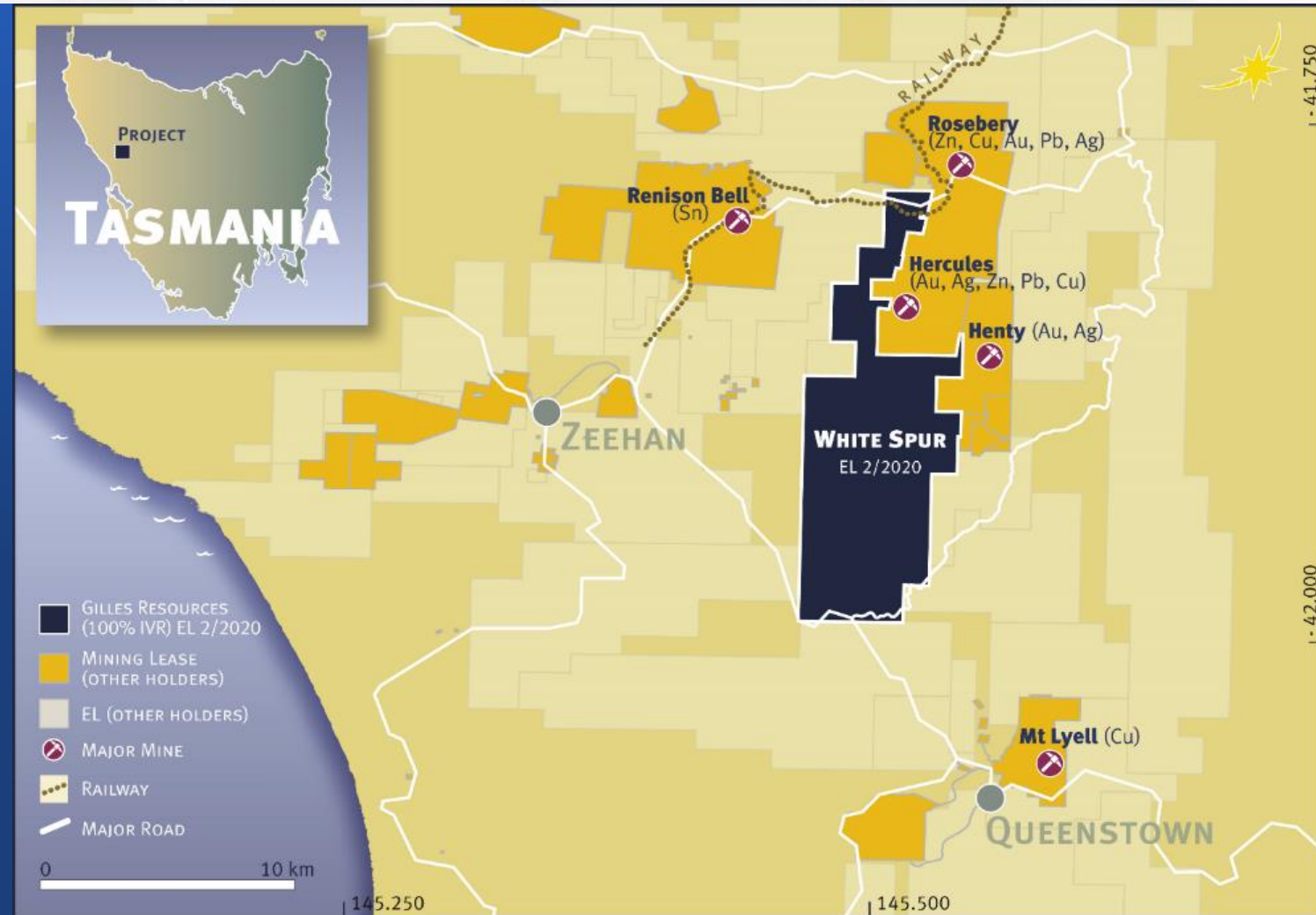
- Adjacent to recent WSA nickel discovery



Other Tenements - Tasmania

White Spur - Tas

- Highly endowed West Coast
- Identified through AI targeting
- Limited drilling:
 - Thallium - known vector to Zn mineralisation
- Adjacent to producing Rosebery, historic Hercules (Zn, Cu, Au, Pb, Ag) and Henty Mines (Au & Ag)



IVR – In Summary

- Board with significant experience and broad range of skills
- Seeking to acquire advanced stage value add project
- Experienced team with project knowledge and operational skillset
- Regional exploration targets with potential to extend Paris mine life
- Focussed on maximising value from Paris Silver Project
- Rising silver price environment
- Highest grade primary Ag project in Australia

