

ASX ANNOUNCEMENT

4 JUNE 2021

ASX:MKG



TCHAGA CONTINUES TO EXPAND WITH FURTHER HIGH-GRADE RESULTS

HIGHLIGHTS

- ❖ **Results received for further RC and DD drill holes at Tchaga Prospect at the Napié Project**
- ❖ **Select results received from Tchaga include:**
 - **NARC419DD: 9.85m at 6.63g/t Au** from 213.15m, including **2m at 30.15g/t Au** from 217.5m
 - **NARC404DD: 17m at 3.06g/t Au** from 129m
 - **NARC402: 2m at 14.99g/t Au** from 14m; and
 - **5m at 4.63g/t Au** from 50m
 - **NARC333DD: 15m at 1.08g/t Au** from 32m; and
 - **4m at 1.42g/t Au** from 87m
 - **13.8m at 1.74g/t Au** from 193.1m
 - **NARC418DD: 5m at 1.31g/t Au** from 53m; and
 - **12m at 0.96g/t Au** from 151m
 - **3.9m at 5.35g/t Au** from 183.8m
 - **NARC395: 5m at 3.53g/t Au** from 70m
 - **NARC399: 5m at 3.13g/t Au** from 101m
 - **NARC394: 6m at 1.97g/t Au** from 68m
 - **NARC407: 5m at 1.18g/t Au** from 32m; and
 - **6m at 1.81g/t Au** from 44m
 - **NARC388DD: 2m at 6.39g/t Au** from 130.1m
 - **NARC409: 5m at 1.84g/t Au** from 33m
 - **NARC405DD: 6m at 1.26g/t Au** from 37m; and
 - **3m at 2.98g/t Au** from 56m
 - **NARC403: 4m at 1.40g/t Au** from 46m
- ❖ **Results extend known mineralisation at depth and along strike on current lodes**
- ❖ **Evidence of new lodes to the north and south of known mineralisation warrant follow-up drilling**
- ❖ **Extension to mineralised zone to be included in the upcoming Maiden Mineral Resource Estimate**
- ❖ **Ongoing news flow with drill operating on double shifts and two assay laboratories being utilised to process drill samples**

Mako's Managing Director, Peter Ledwidge commented:

"The footprint of the Tchaga Project continues to expand as exploration progresses with further high-grade drill intersections and new largely untested lodes that have been defined. The deeper high-grade results reported are significant as these confirm the high-grade shoots within the broader mineralised envelope on multiple cross-sections. The confirmation of these high-grade intercepts at depth increases confidence in Mako being able to deliver a robust Maiden Mineral Resource Estimate with gold mineralisation present from surface to the base of a conceptual pit.

Drilling is ongoing at Tchaga to further extend the strike-length of known mineralised lodes as well as the newly identified lodes. We look forward to providing constant news flow with our drilling progressing well and assay turnaround times back on track now that we are utilising two assay laboratories."

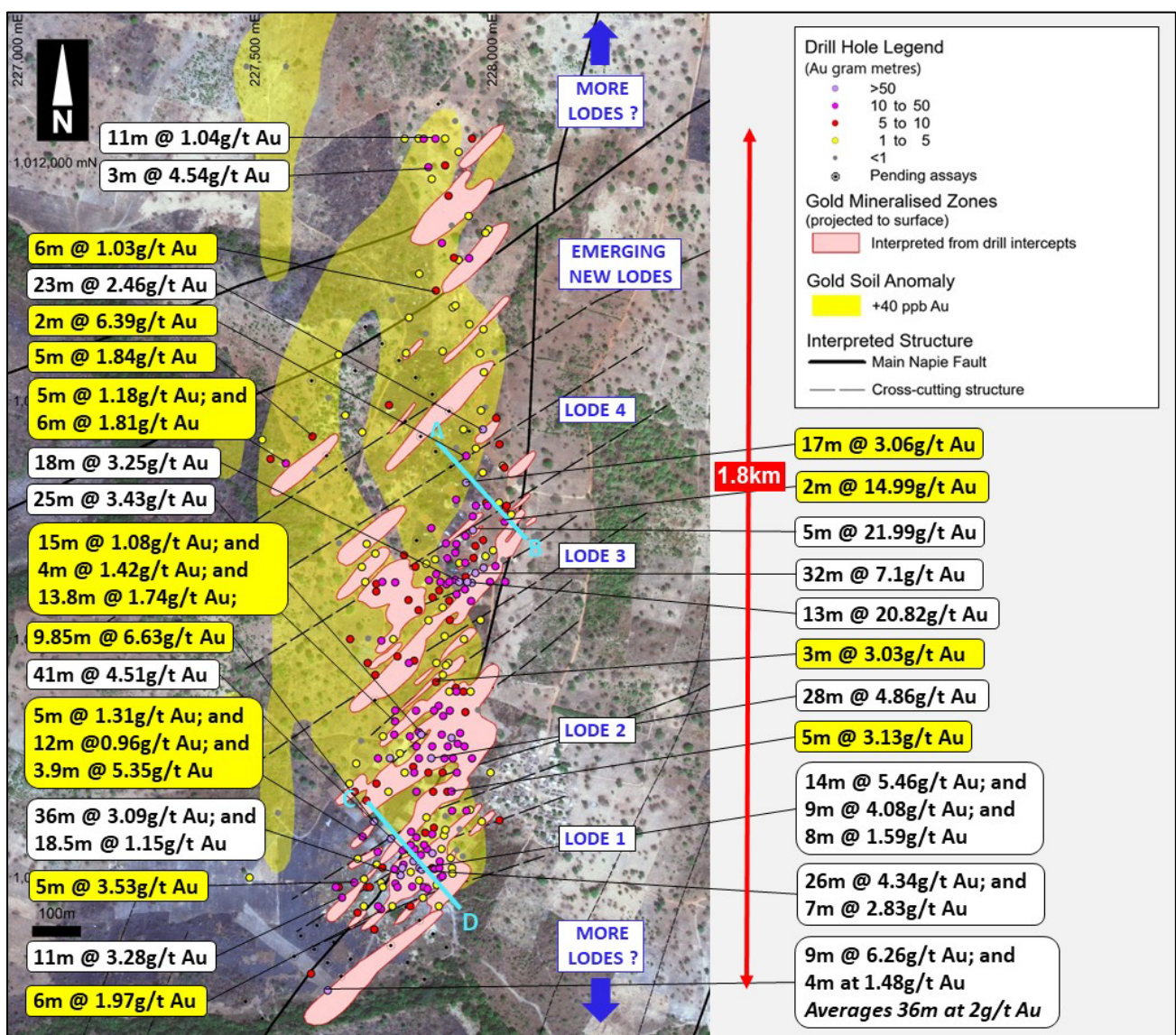


Figure 1: Tchaga Prospect - Select new (yellow) and previous (white) gold intercepts – note the +40ppb gold soil geochem anomaly in shaded yellow which highlights future drill targets to extend known mineralisation (shown in pink)

Mako Gold Limited (“Mako” or “the Company”; ASX:MKG) is pleased to advise that it has received the assay results for further reverse circulation (RC) and diamond drilling (DD) holes from the ongoing drilling program at the Tchaga Prospect at the Company’s flagship Napié Project in Côte d’Ivoire.

The current results, including **17m at 3.06g/t Au** in NARC404DD and **9.85m at 6.63g/t Au** in NARC419DD, validate our methodical approach of infill drilling as well as drilling along-strike, and down-dip of previously identified mineralised lodes. This increases the footprint of each lode and targets new lodes, with the aim of delivering a significant Maiden Mineral Resource Estimate later this year.

Multiple stacked lenses extend in a northeast-southwest direction. To date the drilling has been concentrated in the eastern portion of the 1.8km x 0.5km wide Tchaga soil anomaly (Figure 1). All mineralised lodes remain open along strike to the north-east and the south-west, as well as at depth. Significant potential exists to extend the mineralisation by drill testing more of the soil anomaly, as well as testing the emerging lodes intersected in drilling to the north and south of existing lodes.

Significant new results from Tchaga drilling are shown on Figure 1.

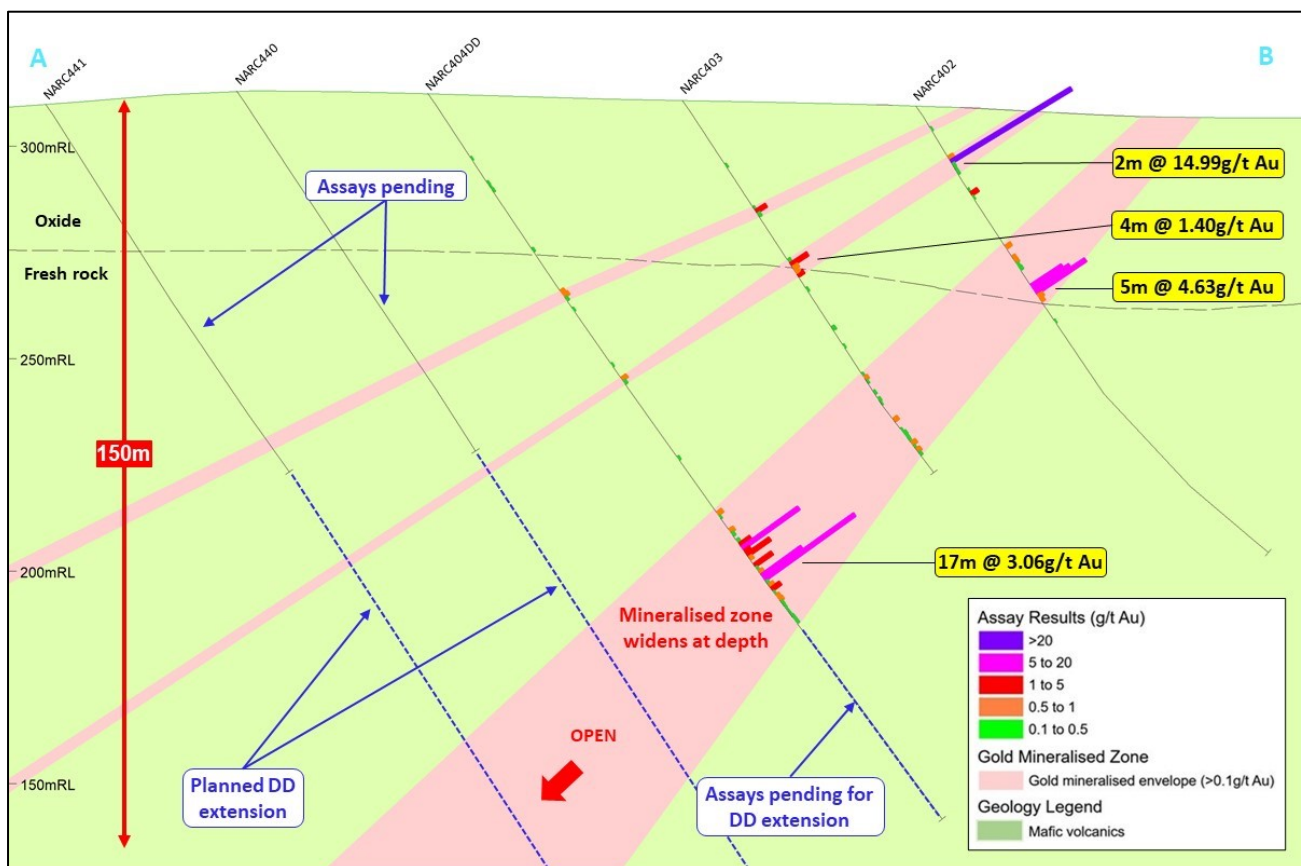


Figure 2: Section AB looking northeast – note that the main mineralised zone seems to be increasing in width down-dip – assays are pending for holes NARC440 and NARC441 and these holes will be extended with DD to target mineralisation down-dip of NARC404DD – assays are also pending for the DD extension of NARC404DD

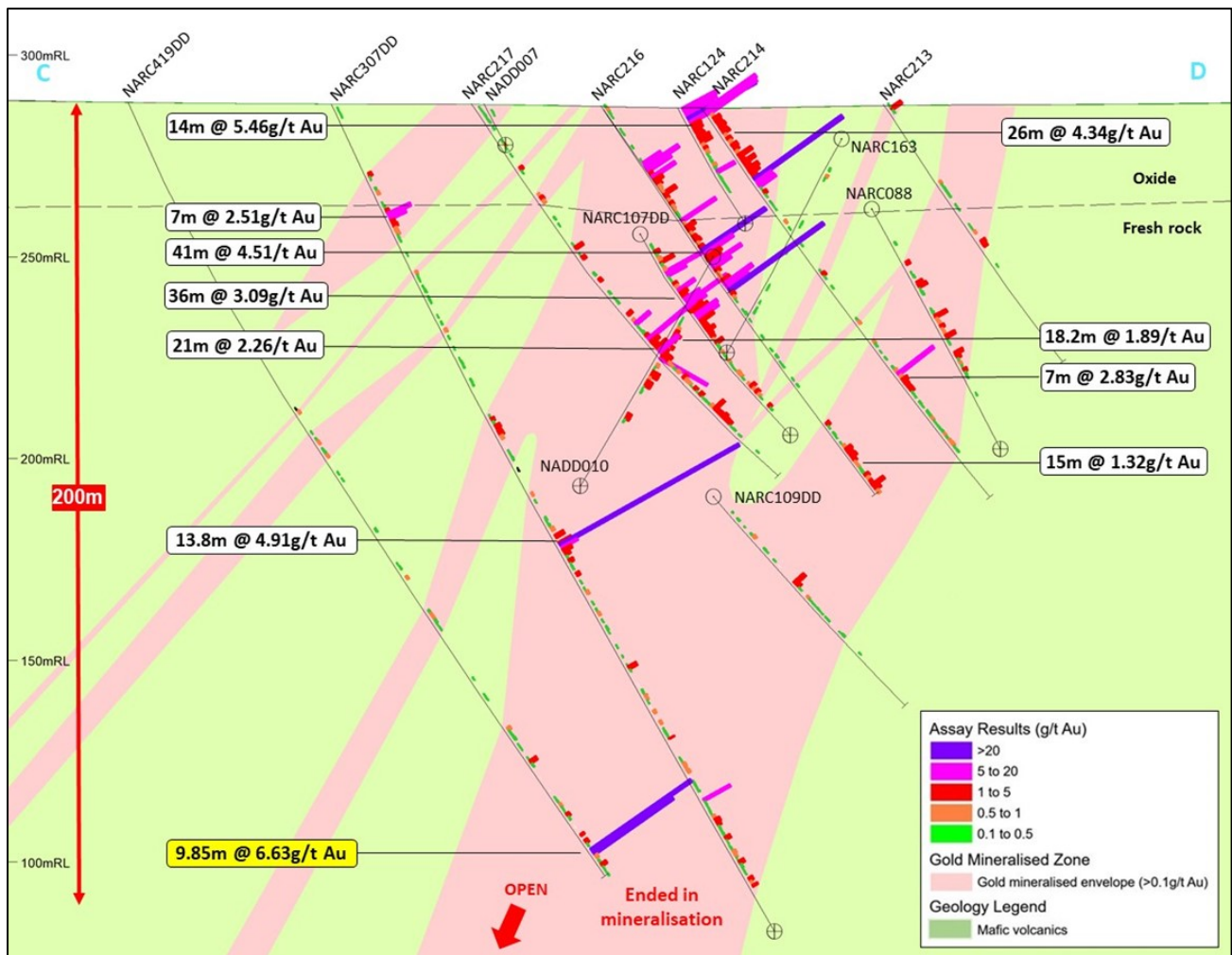


Figure 3: Section AB looking northeast showing continuity of mineralisation down-dip to 200m vertical depth

Select significant results from previous drilling at Tchaga are shown alongside the new results in Figures 1 to 3 which include¹:

- **41m at 4.51g/t Au** from 17m in NARC216
- **32m at 7.1g/t Au** from 13m in NARC184
- **13m at 20.82g/t Au** from 32m in NARC145
- **9m at 22.73g/t Au** from 36m in NARC184
- **36m at 3.09g/t Au** from 43m in NARC107
- **28m at 4.86g/t Au** from 83m in NARC057
- **26m at 4.34g/t au** from surface in NARC214
- **25m at 3.43g/t Au** from 53m in NARC017

¹ Refer to ASX announcements dated 9 July 2018, 13 March 2019, 3 December 2019, 5 March 2020, 15 July 2020, 11 August 2020, 17 November 2020, 15 March 2021, 28 April 2021, and 26 May 2021

- **14m at 5.46g/t Au** from surface in NARC124
- **18m at 3.25g/t Au** from 39m in NARC080
- **23m at 2.46g/t Au** from 15m in NARC084
- **17m at 2.43g/t Au** from 86m in NARC055
- **7.7m at 11.65g/t Au** from 169m in NARC058DD
- **4m at 8.24g/t Au** from 70m in NARC130

Tchaga is located on the +23km soil anomaly and coincident 30km-long interpreted structure (Figure 4). Significant potential also exists at other prospects, such as Gogbala where recent reconnaissance drilling highlighted a 2km-long priority target for follow-up drilling in the coming months.

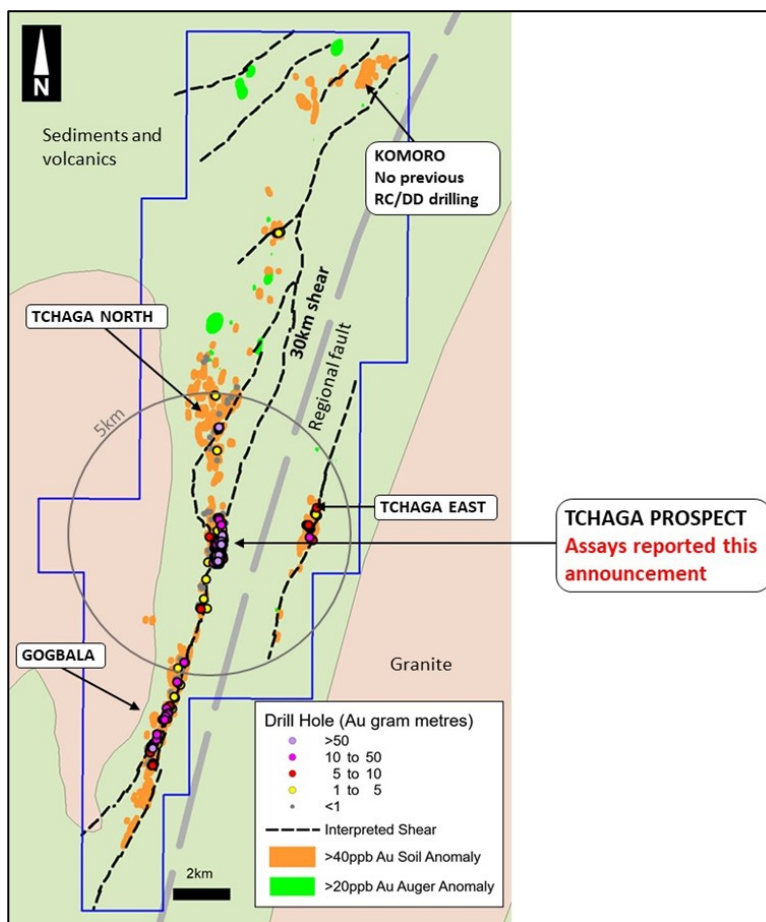


Figure 4: Napié Project – Prospect location map

This announcement has been approved by the Board

For further information please contact:

Peter Ledwidge

Managing Director

Ph: +61 417 197 842

Email: pledwidge@makogold.com.au

Paul Marshall

Company Secretary/CFO

Ph: +61 433 019 836

Email: pmarshall@makogold.com.au

ABOUT MAKO GOLD

Mako Gold Limited (**ASX:MKG**) is an Australian based exploration Company focused on advancing its flagship Napié Gold Project (296km²) in Côte d'Ivoire located in the West African Birimian Greenstone Belts which hosts more than 70 +1Moz gold deposits. Senior management has a proven track record of high-grade gold discoveries in West Africa and aim to deliver significant high-grade gold discoveries.

Mako Gold entered into a farm-in and joint venture agreement on the Napié Permit with Occidental Gold SARL, a subsidiary of West African gold miner Perseus Mining Limited (ASX/TSX:PRU). Mako currently own a 51% interest in Napié and has the ability to earn up to 75% interest through the delivery of a Feasibility Study¹.

In addition, Mako Gold has 100% ownership of the Korhogo Gold Project comprising two permits (296km²) covering 17km of faulted greenstone/ granite contact (high-grade gold targets) located within 30km of Barrick's operating Tongon Gold Mine (4.9Moz Au) in a highly prospective greenstone belt that also hosts Montage Gold's 3.2Moz Kone gold deposit, both located in Côte d'Ivoire, as well as Endeavour's 2.7Moz Wahgnion gold mine across the border in Burkina Faso (Figure 5).

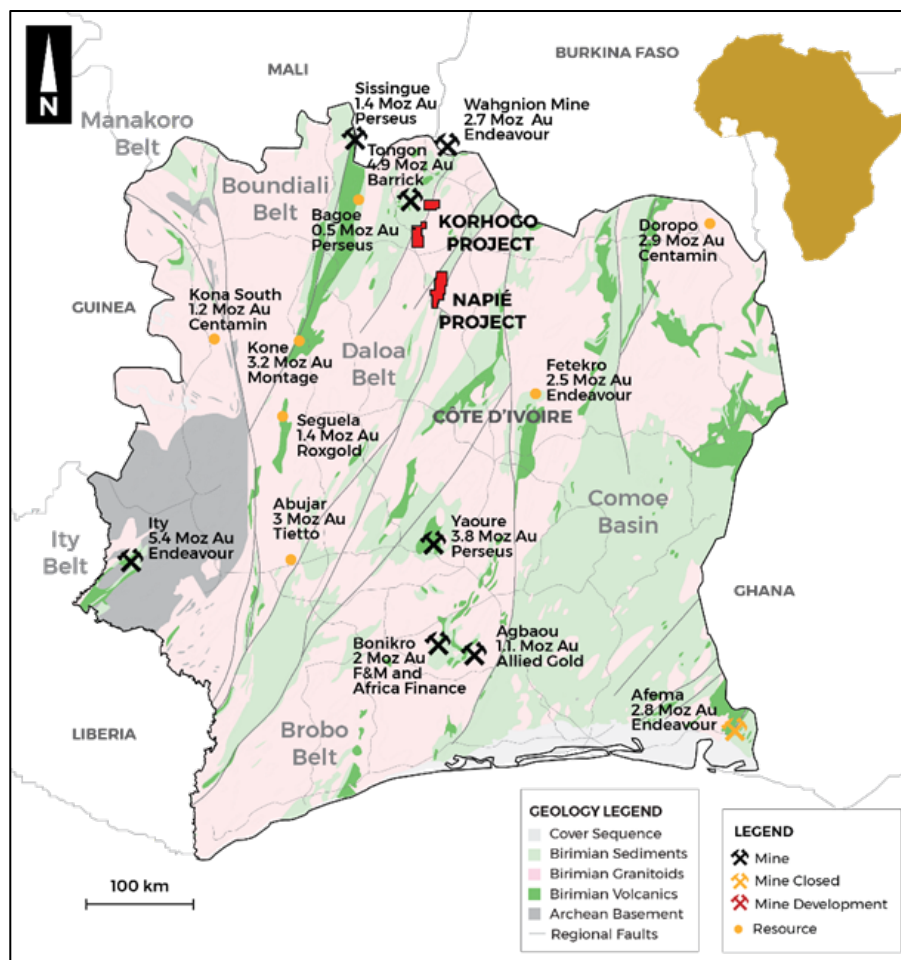


Figure 5: Côte d'Ivoire - Mako projects on simplified geology with mines and deposits

¹ For details of the agreement please refer to Section 9.1 of Mako Gold's Prospectus and section 4.6 of Mako Gold's Supplementary Prospectus, lodged on the ASX on 13 April 2018.

Competent Person's Statement

The information in this report that relates to Exploration Results is based on information compiled by Mrs Ann Ledwidge B.Sc.(Hon.) Geol., MBA, who is a Member of The Australian Institute of Geoscientists (AIG). Mrs Ledwidge is a full-time employee and a shareholder of the Company. Mrs Ledwidge has sufficient experience which is relevant to the style of mineralisation and type of deposit under consideration and to the activity which she is undertaking to qualify as a Competent Person as defined in the 2012 Edition of the 'Australasian Code for Reporting of Exploration Results, Mineral Resources and Ore Reserves'. Mrs Ledwidge consents to the inclusion in the report of the matters based on his information in the form and context in which it appears.

Disclaimer

This Announcement ("Announcement") is for informational purposes only and is not a prospectus, disclosure document or offer document under the Corporations Act 2001 (Cth) ("Corporations Act") or any other law. This Announcement does not constitute, and is not to be construed as, an offer to issue or sell, or a solicitation of an offer or invitation to subscribe for, buy or sell securities in Mako Gold Limited ACN 606 241 829 ("Mako"). The material in this announcement has been prepared by the Company and contains summary information about the Company's activities. The truth or accuracy of the information in this announcement cannot be warranted or guaranteed by the Company. The information in this announcement is of a general background nature and does not purport to be complete or contain all the information security holders would require to evaluate their investment in the Company. It should be read in conjunction with the Company's other periodic and continuous disclosure announcements which are available at www.makogold.com.au. Other than to the extent required by law (and only to that extent) the Company and its officers, employees and professional advisors make no reannouncement or warranty (express or implied) as to, and assume no responsibility or liability for, the contents of this announcement.

This Announcement does not purport to contain all information that recipients may require to make an informed assessment of Mako or its securities. Statements in this Announcement are made only as at the date of this Announcement unless otherwise stated and remain subject to change without notice. No reannouncement or warranty, express or implied, is made as to the fairness, accuracy or completeness of the information or opinions contained in this Announcement, or any omission from this Announcement. To the maximum extent permitted by law, Mako disclaims any responsibility to inform any recipient of this Announcement on any matter that subsequently comes to its notice which may affect the information contained in this Announcement, and undertakes no obligation to provide any additional or updated information whether as a result of new information, future events or results or otherwise.

Not financial product advice or offer

Information in this announcement, including forecast financial information, should not be considered as advice or a recommendation to investors or potential investors in relation to holding, purchasing or selling securities. Before acting on any information, you should consider the appropriateness of the information having regard to these matters, any relevant offer document and in particular, you should seek independent financial advice.

Appendix 1 – Summary of drilling results

Hole No.	East (WGS84)	North (WGS84)	RL (m)	Length (m)	Dip	Az (true)	From (m)	To (m)	Width (m)	Au (g/t)
NARC249DD	227886	1010910	298	204.4	-55	135	38	43	5	1.38*
							55	58	3	3.03*
							126	127	1	2.05*
							154.8	155.8	1	1.06
							162	164.7	2.7	0.56
NARC333DD	227800	1010828	295	259.2	-65	135	32	47	15	1.08*
							87	91	4	1.42*
							95	98	3	0.94*
							118	119.15	1.15	1.1*
							126	127	1	1.09*
							132.7	133.5	0.8	1.08*
							186.5	187	0.5	1.32
							193.1	206.9	13.8	1.74
							244.7	249.6	4.9	0.67
NARC388DD	227950	1011384	314	234.4	-55	135	130.1	132.1	2	6.39
							160.4	163	2.6	0.82
							167.1	169	1.9	0.78
							171.75	175.5	3.75	0.87
							186.4	188.35	1.95	2.55
NARC394	227770	1010433	284	104	-55	135	68	74	6	1.97
							Includes 71	72	1	5.36
NARC395	227714	1010490	284	100	-55	135	70	75	5	3.53
							Includes 71	72	1	7.26
NARC396	227735	1010497	285	105	-55	135	41	42	1	1.44
							52	54	2	1.01
							88	89	1	1.16
NARC397	227982	1010617	292	70	-55	135	4	7	3	1.64
NARC398	227958	1010642	293	85	-55	135	40	44	4	1.06
							51	53	2	0.86
NARC399	227919	1010681	293	125	-55	135	10	12	2	0.6
							15	16	1	1.12
							59	60	1	1.64
							66	67	1	4.36
							101	106	5	3.13
							Includes 104	105	1	7.16
NARC402	228031	1011247	309	135	-55	135	14	16	2	14.99
							Includes	16	1	29.14

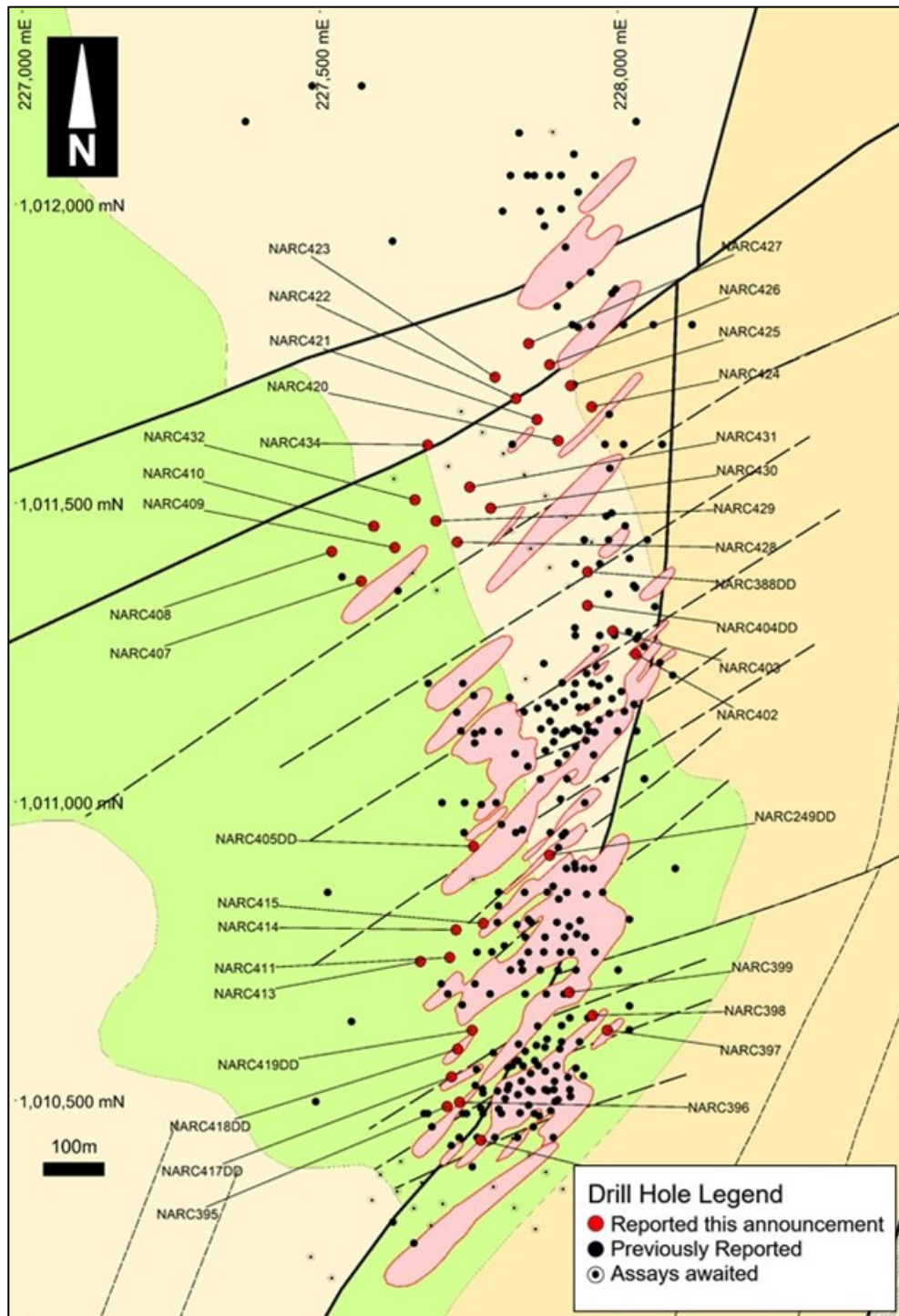
Hole No.	East (WGS84)	North (WGS84)	RL (m)	Length (m)	Dip	Az (true)	From (m)	To (m)	Width (m)	Au (g/t)
							15			
							24	25	1	1.19
							42	44	2	0.54
							50	55	5	4.63
							Includes 50	53	3	7.25
NARC403	227992	1011286	311	106	-55	135	31	32	1	1.76
							46	50	4	1.4
							97	100	3	0.5
NARC404DD (pre-collar)	227950	1011328	312	209.8	-55	135	56	58	2	0.71
							129	146	17	3.06
							Includes 130	131	1	10.82
							138	140	2	12.49
NARC405DD (pre-collar)	227758	1010925	298	225.35	-55	135	31	33	2	1.51
							37	43	6	1.26
							56	59	3	2.98
							Includes 56	57	1	5.61
							62	65	3	0.72
							77	79	2	1.92
NARC407	227569	1011369	311	100	-55	135	14	20	6	0.5
							25	26	1	2.35
							32	37	5	1.18
							44	50	6	1.81
							Includes 48	49	1	5.31
NARC408	227520	1011418	313	108	-55	135	83	84	1	2.16
							87	91	4	0.76
							105	108	3	0.68
							Hole ended in mineralisation			
NARC409	227626	1011425	307	111	-55	135	33	38	5	1.84
							Includes 36	37	1	5.20
NARC410	227590	1011461	308	100	-55	135	No significant results			
NARC411	227718	1010739	293	94	-65	135	18	19	1	1.16
NARC413	227669	1010732	293	125	-65	135	No significant results			
NARC414	227728	1010785	294	115	-65	135	No significant results			
NARC415	227774	1010796	294	123	-65	135	67	70	3	0.68
							82	84	2	0.61
							114	117	3	0.80
NARC417DD	227721	1010539	286	181.1	-65	135	10	12	2	1.57

Hole No.	East (WGS84)	North (WGS84)	RL (m)	Length (m)	Dip	Az (true)	From (m)	To (m)	Width (m)	Au (g/t)
							158.9	159	0.55	1.40
NARC418DD	227731	1010586	287	195.4	-65	135	3	5	2	0.99
							53	58	5	1.31
							142.95	145	2.05	1.01
							151	163	12	0.96
							183.8	188	3.9	5.35
							Includes 187	187.7	0.7	25.84
NARC419DD	227756	1010617	288	225.7	-65	135	43	45	2	0.74
							147	149	2	0.55
							191	192	1	2.15
							204	208	4	0.51
							213.15	223	9.85	6.63
							Includes 217.5	219.5	2	30.15
Hole ended in mineralisation										
NARC420	227900	1011604	309	93	-55	135	23	27	4	0.7
NARC421	227865	1011639	306	115	-55	135	No significant results			
NARC422	227829	1011675	304	144	-55	135	98	99	1	1.88
NARC423	227794	1011710	304	111	-55	135	No significant results			
NARC424	227957	1011661	311	84	-55	135	62	63	1	1.13
NARC425	227921	1011696	309	141	-55	135	129	130	1	1.01
NARC426	227886	1011731	308	144	-55	135	102	108	6	1.03
							112	114	2	0.94
NARC427	227851	1011767	307	142	-55	135	67	68	1	3.14
NARC428	227730	1011434	307	100	-55	135	89	92	3	0.66
NARC429	227695	1011470	305	111	-55	135	84	85	1	1.56
							104	106	2	1.38
NARC430	227787	1011491	309	90	-55	135	54	55	1	6.19
							78	80	2	0.92
NARC431	227752	1011526	305	123	-55	135	No significant results			
NARC432	227660	1011505	305	120	-55	135	No significant results			
NARC434	227681	1011597	302	130	-55	135	81	83	2	0.82

* Previously reported RC pre-collar

Results are reported with a 0.5g/t cut-off grade with 2m internal waste unless noted otherwise. Intercepts of 1m at less than 1g/t Au are not considered significant and are not reported. Areas shaded in blue represent assays between 5 to 10 gram/metres (length x Au grade), and areas shaded in yellow represent assays over 10 gram/metres and are considered significant.

Appendix 2 –Location map for drill holes reported in current announcement



Appendix 3 - JORC 2012 Table 1 Reporting

Section 1 - Sampling techniques and Data

Criteria	JORC Code explanation	Commentary
Sampling techniques	<i>Nature and quality of sampling (eg cut channels, random chips, or specific specialised industry standard measurement tools appropriate to the minerals under investigation, such as down hole gamma sondes, or handheld XRF instruments, etc). These examples should not be taken as limiting the broad meaning of sampling.</i>	This report relates to results for reverse circulation (RC) and diamond drilling (DD) on the Napié Permit. Drilling on the Napié Permit is at an early stage. The focus of this program was on exploration drilling to test the lateral and strike continuity in areas of previously reported gold intercepts at the Tchaga Prospect and to test new conceptual targets outside of the main area.
	<i>Include reference to measures taken to ensure sample representivity and the appropriate calibration of any measurement tools or systems used.</i>	Sampling was undertaken along the entire length of RC drill holes. Each 1m RC drill hole interval was collected in a plastic sample bag. A sub-sample was collected using a riffle splitter to obtain a 3-6kg sample for laboratory analysis. DD holes were cut and sampled at nominal 1m lengths, except where lengths were altered to match geological boundaries. Sampling was undertaken along the entire length of DD drill holes.
	<i>Aspects of the determination of mineralisation that are Material to the Public Report. In cases where 'industry standard' work has been done this would be relatively simple (eg 'reverse circulation drilling was used to obtain 1 m samples from which 3 kg was pulverised to produce a 30 g charge for fire assay'). In other cases, more explanation may be required, such as where there is coarse gold that has inherent sampling problems. Unusual commodities or mineralisation types (eg submarine nodules) may warrant disclosure of detailed information.</i>	RC samples were submitted for lab analysis as 1m intervals. The samples submitted to the lab consisted of a circa 3-6kg riffle split of the 1m interval. Diamond core was cut in half to provide circa 2 to 4kg samples for submission to the laboratory. Samples were submitted to Bureau Veritas Minerals in Abidjan for sample preparation during which the field sample was dried, the entire sample crushed to 70% passing 2mm, with a 1.5kg split by riffle splitter pulverized to 85% passing 75 microns in a ring and puck pulveriser. From this, a 200g subsample was collected and assayed for gold by 50g fire assay with AAS finish.
Drilling techniques	<i>Drill type (eg core, reverse circulation, open-hole hammer, rotary air blast, auger, Bangka, sonic, etc) and details (eg core diameter, triple or standard tube, depth of diamond tails, face-sampling bit or other type, whether core is oriented and if so, by what method, etc).</i>	RC drilling was carried out using a 5 3/8-inch face sampling hammer using an Austex900 multipurpose drill rig. The same drill rig was used to recover HQ size core. Core was oriented using a Reflex Ace tool.
Drill sample recovery	<i>Method of recording and assessing core and chip sample recoveries and results assessed.</i>	RC recoveries were determined by weighing each drill metre bag. DD recoveries were measured by comparing the length of core relative to the length drilled.
	<i>Measures taken to maximise sample recovery and ensure representative nature of the samples.</i>	The drill metre intervals collected were weighed to ensure consistency of sample size and monitor sample recoveries. DD drilling used triple tube technique to maximize recovery in poorly consolidated ground. Recoveries were measured at the drill rig at the time of drilling and monitored by the rig geologist.
	<i>Whether a relationship exists between sample recovery and grade and whether sample bias may have occurred due to preferential loss/gain of fine/coarse material.</i>	No relationship has been observed between sample recovery and grade.
Logging	<i>Whether core and chip samples have been geologically and geotechnically logged to a level of detail to support appropriate Mineral Resource estimation, mining studies and metallurgical studies.</i>	Geological logging was carried out on all RC chips and drill core by Mako Gold geologists. This included lithology, alteration, intensity of oxidation, intensity of foliation, sulphide percentages and vein percentages.
	<i>Whether logging is qualitative or quantitative in nature. Core (or costean, channel, etc) photography.</i>	A standard lithological and alteration legend is used to produce consistent qualitative logs. This legend includes descriptions, and a visual legend with representative photos for comparison purposes. Sulphide and vein content (expressed as %) are quantitative in nature. Intensities are qualitative in nature. A sample of RC chips are washed and retained in chip trays marked with hole number and down hole interval. All RC chip trays are photographed. Structural measurements from core are quantitative in nature. The half-core not sent to the laboratory remains in core trays marked with the hole number and metre marks indicating length drilled. All DD core is photographed as whole core and again as half core.
	<i>The total length and percentage of the relevant intersections logged.</i>	All drill holes are logged in full.

Criteria	JORC Code explanation	Commentary
Sub-sampling techniques and sample preparation	<i>If core, whether cut or sawn and whether quarter, half or all core taken.</i>	Not applicable to RC drilling. Core is sawn into half core and the right side (looking down the hole) was sent to the laboratory. Duplicate samples are taken by sawing half core into quarter core.
	<i>If non-core, whether riffled, tube sampled, rotary split, etc and whether sampled wet or dry.</i>	RC samples are riffle split in the field to a notional 3-6kg sample per metre drilled, with the splitting method (single tier or 3-tier) based on the original sample weight. Splitting method is recorded for each sample. The use of a booster and auxiliary compressor provide dry samples for depths below the water table.
	<i>For all sample types, the nature, quality and appropriateness of the sample preparation technique.</i>	A riffle splitter is used for RC samples to provide representative sub-samples. A core saw is used to cut DD samples in half, as per industry standards. Industry standard sample preparation is conducted under controlled conditions within the laboratory and is considered appropriate for the sample types.
	<i>Quality control procedures adopted for all sub-sampling stages to maximise representivity of samples.</i>	QAQC samples, consisting of a minimum of 2 blanks, 1 duplicate and 1 standard, were submitted with each drill hole. Regular reviews of the sampling were carried out by the supervising geologist to ensure all procedures were followed and best industry practice carried out. Sample sizes and preparation techniques are considered appropriate.
	<i>Measures taken to ensure that the sampling is representative of the in-situ material collected, including for instance results for field duplicate/second-half sampling.</i>	Duplicate sampling results are reviewed regularly. RC chips and DD core are inspected in areas with reported gold assay results to visually ascertain that results are consistent with the style of mineralisation expected.
	<i>Whether sample sizes are appropriate to the grain size of the material being sampled.</i>	The sample sizes are considered to be appropriate for the nature of mineralisation within the project area.
Quality of assay data and laboratory tests	<i>The nature, quality and appropriateness of the assaying and laboratory procedures used and whether the technique is considered partial or total.</i>	Samples were assayed at Bureau Veritas Minerals in Abidjan using 50g fire assay for gold which is considered appropriate for this style of mineralisation. Fire assay is considered total assay for gold.
	<i>For geophysical tools, spectrometers, handheld XRF instruments, etc, the parameters used in determining the analysis including instrument make and model, reading times, calibrations factors applied and their derivation, etc.</i>	No geophysical tools have been used to determine assay results for any elements.
	<i>Nature of quality control procedures adopted (eg standards, blanks, duplicates, external laboratory checks) and whether acceptable levels of accuracy (i.e. lack of bias) and precision have been established.</i>	Monitoring of results of duplicates, blanks and standards is conducted regularly. Internal laboratory QAQC checks are reported and reviewed regularly by Mako's Database Geologist.
Verification of sampling and assaying	<i>The verification of significant intersections by either independent or alternative Company personnel.</i>	Significant intersections are routinely monitored through review of drill chip and core photographs and by site visits by the General Manager Exploration.
	<i>The use of twinned holes.</i>	No twinning of holes was undertaken in this program which is at an early stage of exploration.
	<i>Documentation of primary data, data entry procedures, data verification, data storage (physical and electronic) protocols.</i>	Primary data is collected on field sheets and then compiled on standard Excel templates for validation and data management. The database is maintained in Microsoft Access.
	<i>Discuss any adjustment to assay data.</i>	All samples returning assay values below detection limit are assigned a value of 0.005g/t Au (half of the lower detection limit). No other adjustments have been applied to assay data.
Location of data points	<i>Accuracy and quality of surveys used to locate drill holes (collar and down-hole surveys), trenches, mine workings and other locations used in Mineral Resource estimation.</i>	Drill hole collar locations are initially set out (and reported) using a hand-held GPS with a location error of +/- 5m. Collar positions are subsequently located using a hand-held GPS set to average for a minimum of 5 minutes. Elevations are extracted from digital terrain model data as handheld GPS elevations are inconsistent. Down hole surveys are routinely commenced from 6m down hole depth and additional readings taken at approximately 30m intervals thereafter.
	<i>Specification of the grid system used.</i>	The grid system used is WGS84. A northern hemisphere zone is applied that is applicable to the location of individual project areas.
	<i>Quality and adequacy of topographic control.</i>	A detailed topographic survey of the project area has not been conducted.
Data spacing and distribution	<i>Data spacing for reporting of Exploration Results.</i>	Drill holes are irregularly located, as they are based on wide-spaced exploration targets. A limited number of drill holes are drilled along sections spaced 20m to 50m apart at the Tchaga Prospect.

Criteria	JORC Code explanation	Commentary
	<i>Whether the data spacing, and distribution is sufficient to establish the degree of geological and grade continuity appropriate for the Mineral Resource and Ore Reserve estimation procedure(s) and classifications applied.</i>	Drilling reported is at an early stage of exploration and has not been used to estimate any mineral resource or reserve.
	<i>Whether sample compositing has been applied.</i>	No sample compositing was done.
Orientation of data in relation to geological structure	<i>Whether the orientation of sampling achieves unbiased sampling of possible structures and the extent to which this is known, considering the deposit type.</i>	Exploration is at an early stage and, as such, knowledge on exact location of mineralisation and its relation to lithological and structural boundaries is not accurately known. However, the current hole orientation is considered appropriate for the program to reasonably assess the prospectivity of known structures interpreted from surface and other data sources.
	<i>If the relationship between the drilling orientation and the orientation of key mineralised structures is considered to have introduced a sampling bias, this should be assessed and reported if material.</i>	No orientation-based sampling bias has been identified in the data to date.
Sample security	<i>The measures taken to ensure sample security.</i>	Samples are stored securely on the project site under supervision of security guards and/or Company personnel. Company personnel maintain chain of custody of the samples prior to collection from site by laboratory personnel. Documentation is prepared to record handover of samples to laboratory personnel.
Audits or reviews	<i>The results of any audits or reviews of sampling techniques and data.</i>	A cursory review of the sampling techniques and data, appropriate to this early stage of exploration, was previously conducted. As a result of the review, sample size was increased from a nominal 2kg to 5kg. No change was made to DD sample size.

Section 2 - Reporting of Exploration Results

Criteria	JORC Code explanation	Commentary
Mineral tenement and land tenure status	<i>Type, reference name/number, location and ownership including agreements or material issues with third parties such as joint ventures, partnerships, overriding royalties, native title interests, historical sites, wilderness or national park and environmental settings.</i>	The Napié Permit was granted to Occidental Gold SARL, a 100% owned, Ivorian registered, subsidiary of Perseus Mining Ltd, by decree No. 2012-1164 on 19th December 2012 and was valid for three years. The first, three-year, renewal of the permit was granted to Occidental Gold by decree No: 181 /MIM/DGMG DU on 19 December 2016. The second, three-year renewal was granted to Occidental Gold by decree No: 00018/MIM/DGMG on 21 March 2019. On 7th September 2017 Mako Gold Limited signed a Farm-In and Joint Venture Agreement with Occidental Gold SARL. The agreement gives Mako the right to earn 51% of the Napié Permit by pending US\$ 1.5M on the property within three years and the right to earn 75% by sole funding the property to completion of a Feasibility Study. Mako has achieved the 51% earn-in ahead of schedule.
	<i>The security of the tenure held at the time of reporting along with any known impediments to obtaining a licence to operate in the area.</i>	The tenement is in good standing and no known impediments exist.
Exploration done by other parties	<i>Acknowledgment and appraisal of exploration by other parties.</i>	Previous exploration was conducted by Occidental Gold (the permit owner) and consisted of surface geochemical sampling, auger sampling, an airborne geophysical survey and interpretation, RAB drilling and limited RC drilling (2 holes). Refer to Section 4.6 and Annexure A of Mako Gold's Prospectus lodged on the ASX on 13 April 2018 for details on previous exploration.
Geology	<i>Deposit type, geological setting and style of mineralisation.</i>	The Napié Permit is located within the Lower Proterozoic Birimian Dalao greenstone belt. The style of mineralisation sought is structurally controlled orogenic gold, within an interpreted shear zone related to a regional-scale fault and secondary splays.

Criteria	JORC Code explanation	Commentary
Drill hole Information	<p>A summary of all information material to the understanding of the exploration results including a tabulation of the following information for all Material drill holes:</p> <ul style="list-style-type: none"> ○ easting and northing of the drill hole collar ○ elevation or RL (Reduced Level – elevation above sea level in metres) of the drill hole collar ○ dip and azimuth of the hole ○ down hole length and interception depth ○ hole length. 	<p>Drill collars are shown in the figures within the report and in Appendix 2. Significant intervals have been reported in the body of the report.</p> <p>A summary of drill information is contained in Appendix 1 of this report.</p>
Data aggregation methods	<p>In reporting Exploration Results, weighting averaging techniques, maximum and/or minimum grade truncations (eg cutting of high grades) and cut-off grades are usually Material and should be stated.</p>	<p>A nominal 0.5g/t Au lower cut-off has been applied incorporating up to 2m of internal dilution below the reporting cut-off grade. Intercepts of 1m less than 1g/t Au are not considered significant and have not been reported.</p> <p>All reported assays have been length weighted.</p> <p>No density weighting or high-grade cuts have been applied.</p>
	<p>Where aggregate intercepts incorporate short lengths of high-grade results and longer lengths of low-grade results, the procedure used for such aggregation should be stated and some typical examples of such aggregations should be shown in detail.</p>	<p>High grade gold intervals internal to broader zones of mineralisation are reported as included intervals.</p>
	<p>The assumptions used for any reporting of metal equivalent values should be clearly stated.</p>	<p>No metal equivalent values have been used for reporting exploration results.</p>
Relationship between mineralisation widths and intercept lengths	<p>These relationships are particularly important in the reporting of Exploration Results.</p> <p>If the geometry of the mineralisation with respect to the drill hole angle is known, its nature should be reported.</p> <p>If it is not known and only the down hole lengths are reported, there should be a clear statement to this effect (eg ‘down hole length, true width not known’).</p>	<p>Intersection lengths are reported as down hole lengths (the distance from the surface to the end of the hole, as measured along the drill trace). True widths are uncertain at this time (although an approximation has been provided on some sections with higher drillhole density) as the orientation of mineralisation is not understood at this early stage of exploration.</p>
Diagrams	<p>Appropriate maps and sections (with scales) and tabulations of intercepts should be included for any significant discovery being reported. These should include, but not be limited to a plan view of drill hole collar locations and appropriate sectional views.</p>	<p>Refer to Figures contained within this report.</p>
Balanced reporting	<p>Where comprehensive reporting of all Exploration Results is not practicable, representative reporting of both low and high grades and/or widths should be practiced to avoid misleading reporting of Exploration Results.</p>	<p>All results are reported with the exception of intercepts of 1m less than 1g/t Au which are not considered significant and have not been reported.</p>
Other substantive exploration data	<p>Other exploration data, if meaningful and material, should be reported including (but not limited to): geological observations; geophysical survey results; geochemical survey results; bulk samples – size and method of treatment; metallurgical test results; bulk density, groundwater, geotechnical and rock characteristics; potential deleterious or contaminating substances.</p>	<p>No other exploration data that is considered meaningful and material has been omitted from this report</p>
Further work	<p>The nature and scale of planned further work (eg tests for lateral extensions or depth extensions or large-scale step-out drilling). Diagrams clearly highlighting the areas of possible extensions, including the main geological interpretations and future drilling areas, provided this information is not commercially sensitive.</p>	<p>RC and diamond drilling is planned along strike and at depth to follow up the results reported in this announcement.</p> <p>An IP survey and follow up drilling is planned at the Gogbala Prospect.</p>