

Lode Resources Ltd

Pre-Quotation Disclosure

Lode Resources Ltd ("Lode" or "the Company") (ASX: LDR) is please provide to ASX Limited (ASX) the following confirmations to satisfy the conditions for the admission of the Company's fully paid ordinary shares to quotation on ASX.

Capitalised terms which are not otherwise defined in this document have the meanings given to them in the prospectus lodged by LDR with the Australian Securities and Investments Commission on 13 April 2021 (Prospectus).

1. Confirmation of Close of offer

The Company confirms that the public offer (offer) under its prospectus dated 13 April 2021 as varied by a supplementary prospectus dated 6 May 2021 closed on 7 June 2021 and 25,576,000 fully paid ordinary shares were issued at \$0.20 per share to raise \$5,115,200.

2. Confirmation issue of options

The Company confirms granting 500,000 unquoted options to Mr Keith Mayes and 500,000 unquoted options to Mr Jason Beckon. The options have an exercise price of \$0.30 and expiry on 2 July 2023.

The Company confirms that no options were granted or will be granted to the Lead Manager.

3. Transfer of Shares and Options

The Company confirms that on 28 June 2021, the following were despatched on behalf of the Company:

- (a) in relation to all holdings on the CHESS sub-register, a notice from the Company under ASX Settlement Operating Rule 8.9.1; and
- (b) in relation to all other holdings, issuer sponsored holding statements.

The Company confirms there were no oversubscriptions and no refunds were processed.

4. Distribution Schedule



ADVANCED

110 Stirling

PO Box 1156,

SHARE REGISTRY LIMITED

1300 113 258

Nedlands WA 6909

+61 8 9389 8033

+61 8 6370 4203

Perth Office

Highway, Nedlands WA 6009

Sydney Office

www.advancedshare.com.au Suite 8H, 325 Pitt Street, Sydney NSW 2000
admin@advancedshare.com.au PO Box Q1736, Queen Victoria Building NSW 1230

TOP SPREAD REPORT

LODE RESOURCES LTD

Date: 23/06/2021

For Class: [25908]LDR25908 FINAL IPO ALT JUN21

Operator: Kan

Wang Page: 1

SPREAD OF HOLDINGS	NUMBER OF HOLDERS	NUMBER OF UNITS	% OF TOTAL ISSUED CAPITAL
1 - 1,000	0	0	0.000 %
1,001 - 5,000	0	0	0.000 %
5,001 - 10,000	131	1,310,000	1.638 %
10,001 - 100,000	167	6,836,000	8.549 %
100,001 - 999,999,999,999	57	71,820,002	89.813 %
TOTAL	355	79,966,002	100 %

5. Statement of the 20 Largest holders

Company: LODE RESOURCES LTD



Security: LDR25908 FINAL IPO ALT JUN21
As of 23 Jun 2021

Ordinary Shareholders

Rank	Name	Units	% of Units
1	AUGUSTA ENTERPRISES PTY LTD <AUGUSTA ENTERPRISES A/C>	20,750,001	25.95
2	A M VAN HEYST SUPERANNUATION <A VAN HEYST PRIVATE S/F A/C>	20,750,001	25.95
3	KESLI CHEMICALS PTY LTD <RUANE S/F A/C>	3,000,000	3.75
4	TYSON RESOURCES PTY LTD	2,000,000	2.5
5	TYSON RESOURCES PTY LTD	2,000,000	2.5
6	JANICE ELIZABETH GIBSON + KENNETH WILLIAM GIBSON <K&J GIBSON SUPER FUND A/C>	1,500,000	1.88
7	WILLIAMS NORTHWOOD PTY LTD <WILLIAMS SUPER FUND A/C>	1,500,000	1.88
8	DHR SUPERANNUATION PTY LTD <DHR SUPERANNUATION NO 2 A/C>	1,000,000	1.25
9	DOWMARDELLA PTY LTD <RODGERS SUPER FUND A/C>	1,000,000	1.25
10	MR KENNETH WILLIAM GIBSON + MRS JANICE ELIZABETH GIBSON	1,000,000	1.25
11	ASHABIA PTY LTD <ASHABIA SUPER FUND A/C>	1,000,000	1.25
12	ONE MANAGED INVESTMENT FUNDS LIMITED <TI GROWTH A/C>	1,000,000	1.25
13	MCJP DARLING ENTERPRISE PTY LTD <TADAR SMSF A/C>	990,000	1.24
14	STATION CAPITAL PTY LTD	750,000	0.94
15	BLUE LAKE PARTNERS PTY LTD	750,000	0.94
16	MS RENAE WAINWRIGHT + MR DAVID LAWRENCE HUGHES <HUGHES FAMILY A/C>	660,000	0.83
17	MR DAVID ARITI	625,000	0.78
18	EDNA SECURITIES PTY LTD <WARREN GELFAND PSF A/C>	500,000	0.63
19	HOLLAND INTERNATIONAL PTY LTD <THE HOLLAND FAMILY A/C>	500,000	0.63
20	VILLASOR HOLDINGS PTY LTD <AM VAN HEYST INVESTMENT A/C>	500,000	0.63

Totals: Top 20 holders of LDR25908 FINAL IPO ALT JUN21

61,775,002 77.25

Total Remaining Holders Balance

18,191,000 22.75

Total Holders Balance

79,966,002 100

6. Statement of commitments

The Company confirms that it has raised \$5,115,200 in accordance with the minimum subscription offer in the prospectus. The Company confirms that intends to use the proceeds as outlined on page 26 in the prospectus under the minimum subscription.

Use of funds	Minimum Subscription	
	\$	%
Exploration	\$2,809,200	56.18%
Working Capital	\$1,472,800	29.46%
Costs of the Offer	\$718,000	14.36%
Total	\$5,000,000	100.00%

7. Mandatory Restrictions

The tables below sets out the number of securities subject to ASX mandatory restrictions and the restriction period applied to those securities.

Shares	Number of Securities	Restriction Expiry Date
Fully paid ordinary shares	40,414,900	24 months from the date of quotation

Options	Number of Securities	Restriction Expiry Date
Unlisted options	1,000,000	24 months from the date of quotation

Shares	Number of Securities	Restriction Expiry Date
Fully paid ordinary shares	3,615,000	5 January 2022

8. Exploration Tenements

The Company confirms that there are no legal, statutory or contractual impediments to the Company entering into the exploration tenements and carrying out exploration activities in respect of:

EL8933 Webbs Consol Project;
 EL8980 Uralla Project;
 EL9003 Fender Project;
 EL9004 Elsinore Project;
 EL9084 Tea Tree Project;
 EL9085 Thor Project; and
 EL9087 Uralla West Project.

The Company confirms that it will be able to spend its cash in accordance with its commitments for the purposes of Listing Rule 1.3.2(b)

9. Rock chip Samples

JORC Code, 2012 Edition – Table 1 – supplementary

Section 1 - Sampling Techniques and Data

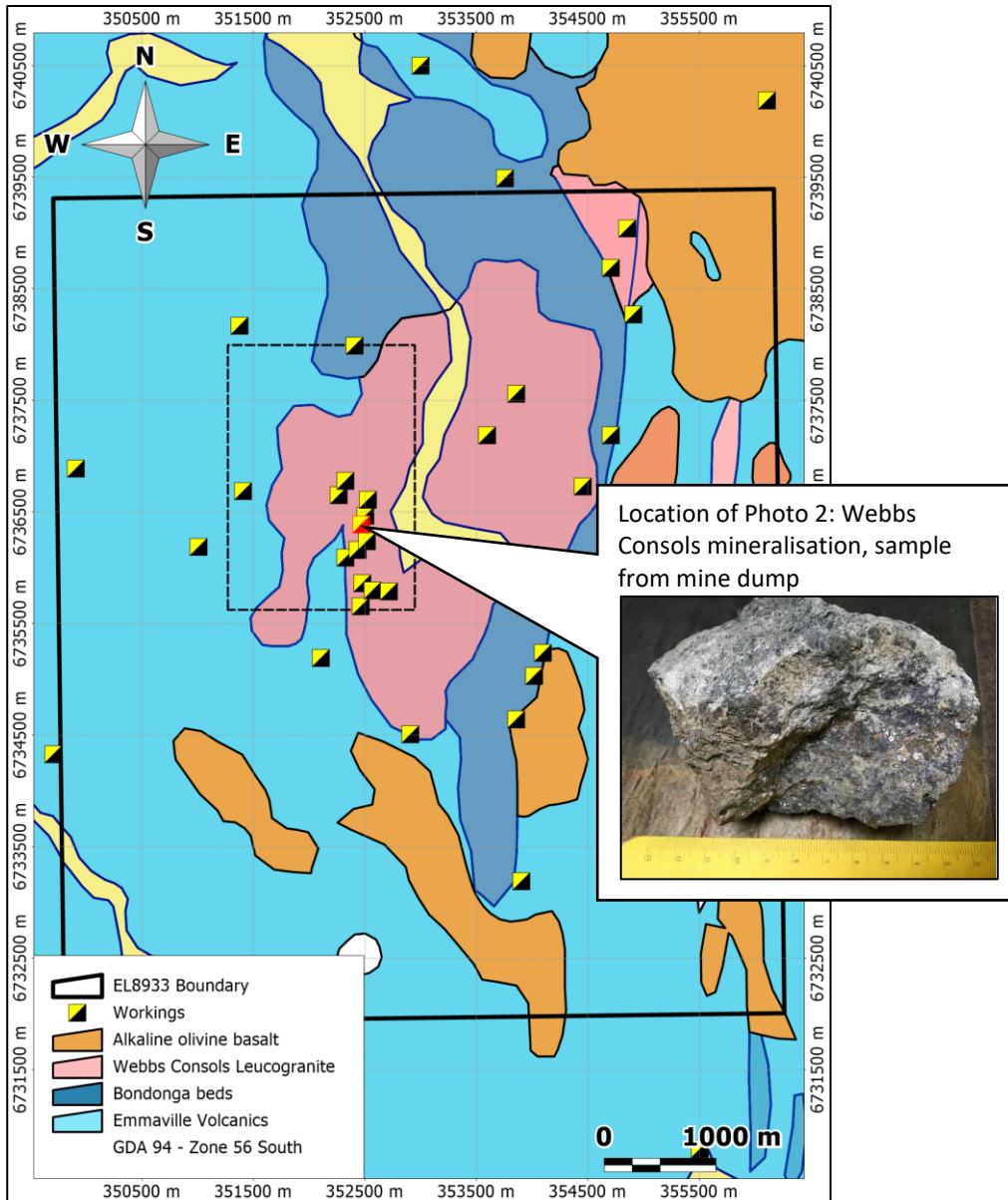
This is a supplementary version of the JORC Table 1 in the IGR included in the Lode Resources Supplementary Prospectus dated 6 May 2021.

This supplementary JORC Table 1 concerns photographs of three rock samples included on pages 41, 62 and 100 of the Independent Geologist Report contained in Annexure A of the Supplementary Prospectus.

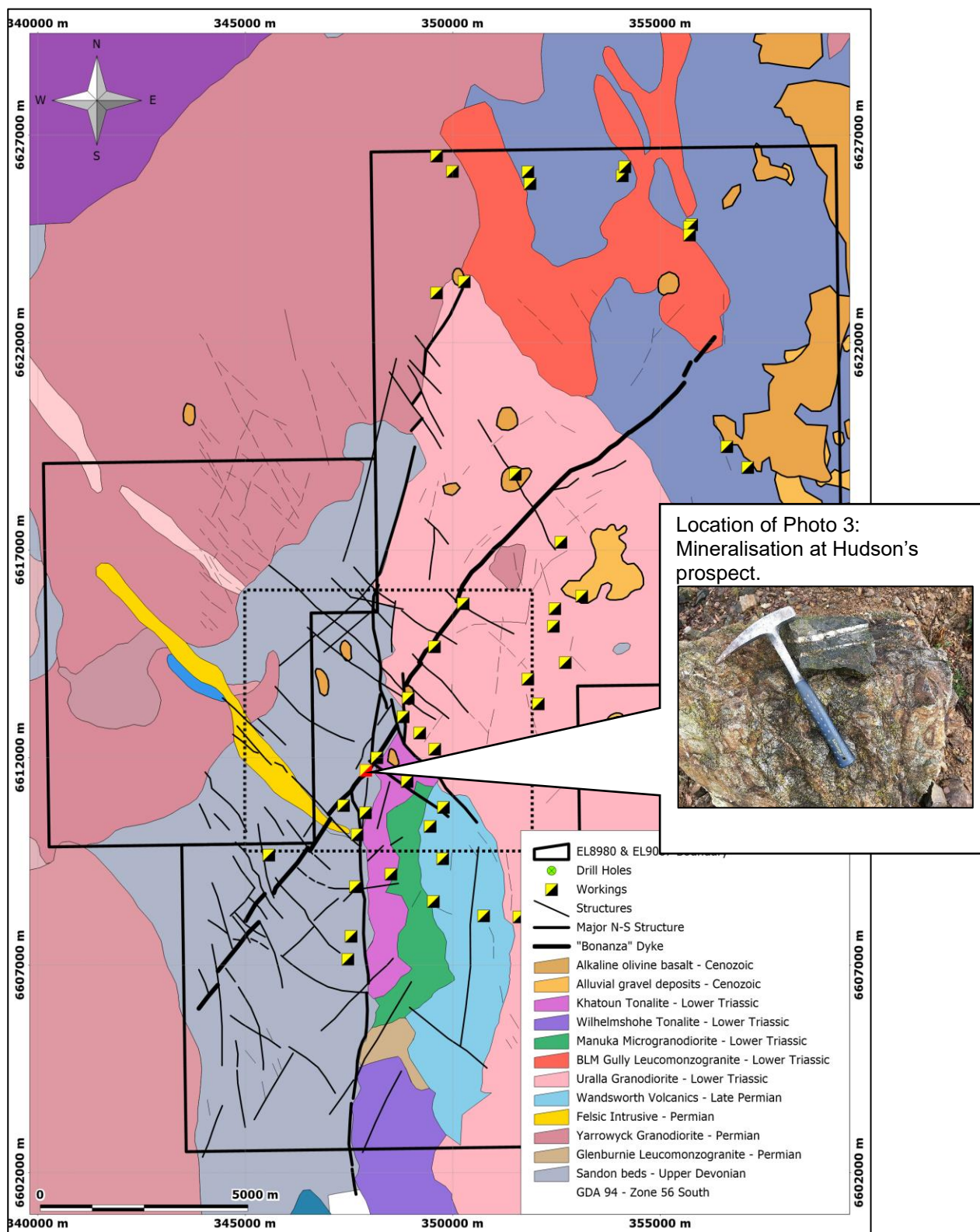
The locations of the photographed rock samples are summarised in the table below and shown in accompanying Maps 1, 2 & 3.

Page	Photo Description	Project	MGA94, Zone 56		Map Ref.
			Easting	Northing	
41	Photo 2: Webbs Consols mineralisation, sample from mine dump	Webbs Consol (EL8933)	352,465	6,736,387	Map 1
62	Photo 3: Mineralisation at Hudson's prospect	Uralla (EL8980)	347,904	6,611,688	Map 2
100	Photo 6: Trough Gully mineralisation	Fender (EL9003)	320,604	6,549,088	Map 3

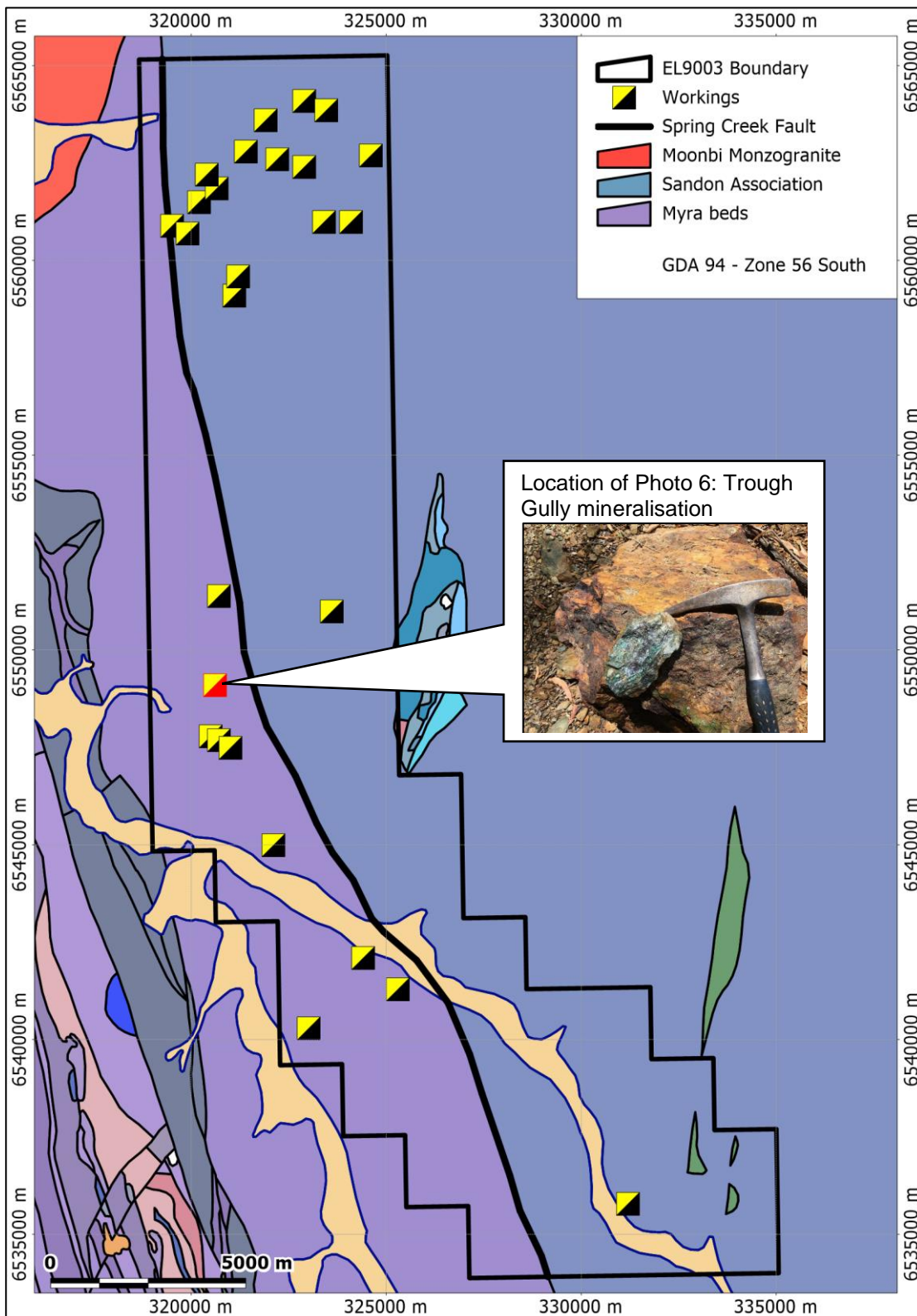
Map 1. Webbs Consol (EL8933)



Map 2. Uralla (EL8980 & EL9087)



Map 3. Fender (EL9003)



Criteria	Commentary
<i>Sampling techniques</i>	<p>Photo 2 - Webbs Consols Project</p> <ul style="list-style-type: none"> The sample was a loose piece of mineralized material taken from a mine dump at the Webbs Consols mine. <p>Photo 3 - Uralla Project</p> <ul style="list-style-type: none"> The samples consisted of two loose pieces of quartz-veined metasediments collected from mine dumps at the Hudsons prospect <p>Photo 6 - Fender Project</p> <ul style="list-style-type: none"> The samples consisted of two loose pieces of gossanous and malachite-stained metasediments from mine dumps at Trough Gully mine.
<i>Drilling techniques</i>	<ul style="list-style-type: none"> No drilling involved in the samples.
<i>Drill sample recovery</i>	<ul style="list-style-type: none"> No drilling involved in the samples.
<i>Logging</i>	<ul style="list-style-type: none"> No drilling involved in the samples.
<i>Sub-sampling techniques and sample preparation</i>	<ul style="list-style-type: none"> No sample preparation involved.
<i>Quality of assay data and laboratory tests</i>	<ul style="list-style-type: none"> The samples were not assayed.
<i>Verification of sampling and assaying</i>	<ul style="list-style-type: none"> The samples were not assayed.
<i>Location of data points</i>	<ul style="list-style-type: none"> The sample locations were recorded using a hand-held GPS unit (accuracy 5m).
<i>Data spacing and distribution</i>	<ul style="list-style-type: none"> Not applicable. The photos were for geological reference only.
<i>Orientation of data in relation to geological structure</i>	<ul style="list-style-type: none"> Not applicable.
<i>Sample security</i>	<ul style="list-style-type: none"> Not applicable.
<i>Audits or reviews</i>	<ul style="list-style-type: none"> No audits or reviews of sampling techniques undertaken.

Section 2 - Reporting of Exploration Results

(Criteria listed in the preceding section also apply to this section.)

Criteria	Commentary
<i>Mineral tenement and land tenure status</i>	<ul style="list-style-type: none"> The samples were collected from EL8933 (Photo 2), EL8980 (Photo 3) and EL9003 (Photo 6).
<i>Exploration done by other parties</i>	<ul style="list-style-type: none"> The samples were collected from mine dumps at historical workings.
<i>Geology</i>	<ul style="list-style-type: none"> The Webbs Consols mineralisation (Photo 2) consisted of a silica-rich, fractionated, I-type leucogranite containing disseminated to semi-massive sulphides (sphalerite, galena, pyrite). The Hudsons mineralisation (Photo 3) consisted of quartz veins hosted by metasediments. The Trough Gully mineralisation (Photo 6) consisted of gossanous metasediments containing copper carbonate minerals.
<i>Drill hole Information</i>	<ul style="list-style-type: none"> No drilling involved in the samples.
<i>Data aggregation methods</i>	<ul style="list-style-type: none"> No drilling involved in the samples.
<i>Relationship between mineralisation widths and intercept lengths</i>	<ul style="list-style-type: none"> Not applicable.
<i>Diagrams</i>	<ul style="list-style-type: none"> Sample locations are shown on the attached maps.
<i>Balanced reporting</i>	<ul style="list-style-type: none"> The photos were taken of samples containing visible mineralisation that are not necessarily representative of the bulk of the mineral occurrences.
<i>Other substantive exploration data</i>	<ul style="list-style-type: none"> Not applicable.
<i>Further work</i>	<ul style="list-style-type: none"> Not applicable.

This announcement has been approved by the Chairman of the Board, Andrew Van Heyst.