

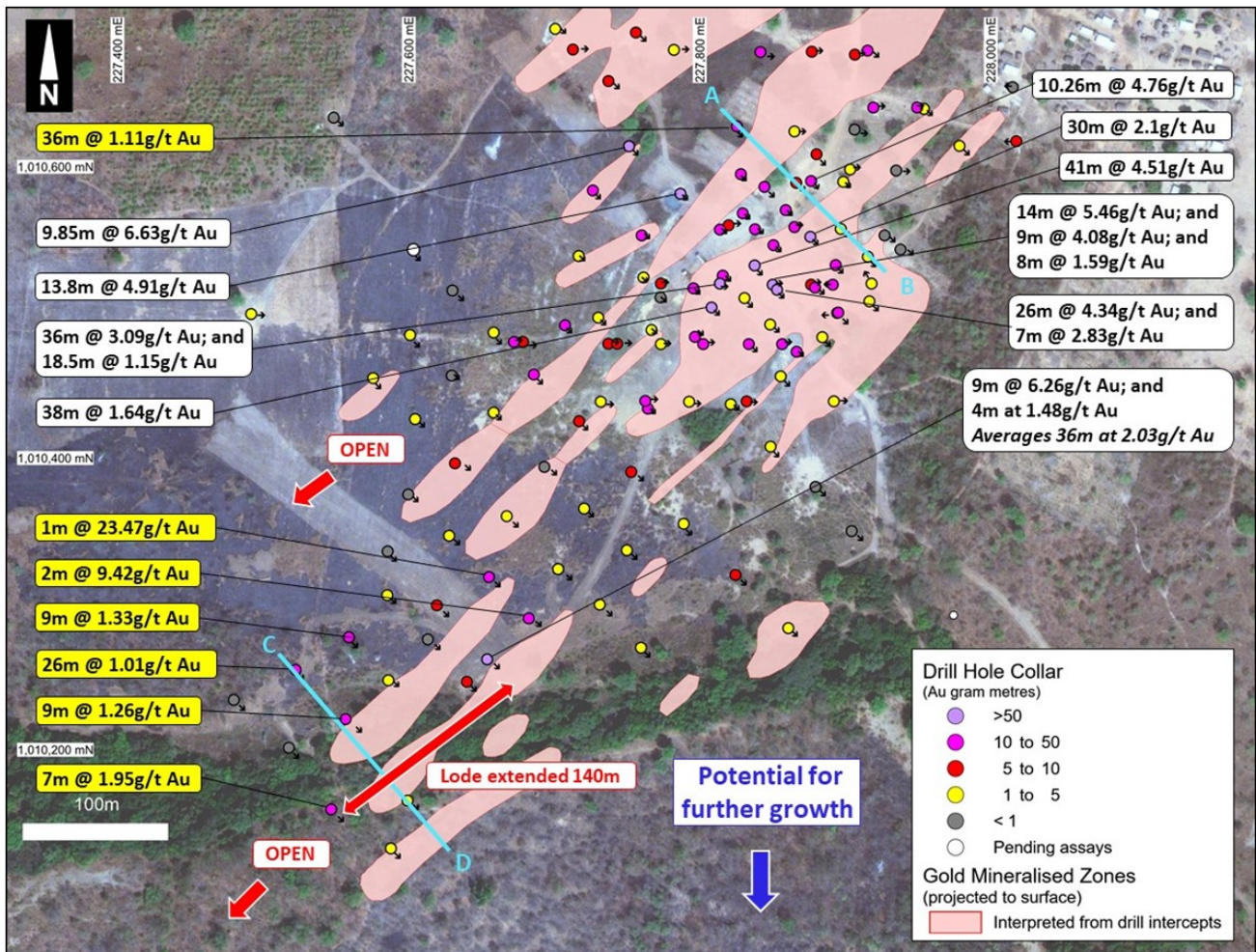
## **DRILLING EXTENDS TCHAGA STRIKE TO 2KM AHEAD OF MAIDEN MINERAL RESOURCE ESTIMATE**

### **HIGHLIGHTS**

- ❖ **Gold mineralisation at Tchaga Prospect increases to the southwest by 140m for a total north-south strike-length of 2km**
- ❖ **New results significantly increase the size of Lode 1 thereby adding to the size of the upcoming Maiden Mineral Resource Estimate**
- ❖ **Select results received from Tchaga include:**
  - **NARC497: 36m averaging 1.11g/t Au** intersected over multiple zones from 40m; including
    - **10m at 1.92g/t Au** from 40m; and
    - **18m at 0.99g/t Au** from 58m
  - **NARC467: 26m averaging 1.01g/t Au** intersected over multiple zones from 92m; including
    - **9m at 1.09g/t Au** from 100m; and
    - **5m at 2.55g/t Au** from 113m
  - **NARC460: 2m at 9.42g/t Au** from 36m
  - **NARC461: 1m at 23.47g/t Au** from 82m
  - **NARC469: 9m at 1.33g/t Au** from 86m
  - **NARC466: 5m at 1.67g/t Au** from 28m; and **9m at 1.26g/t Au** from 99m
  - **NARC490: 7m at 1.95g/t Au** from 105m
- ❖ **22 of the 29 holes intersected significant mineralisation indicating widespread gold mineralisation at Tchaga**
- ❖ **Large portions of the extensive gold soil anomaly remain to be drill tested**
- ❖ **Mineralisation at Tchaga remains open in all directions**

### **Mako's Managing Director, Peter Ledwidge commented:**

*"Our exploration strategy is paying off, as we once again increase the mineralised footprint of the Tchaga Prospect with our methodical approach of following mineralisation along strike on each lode, as well as targeting new lodges to the south and north of known lodges. We have significantly increased the size of Lode 1 and intend to apply this same strategy to the other lodges we have discovered to date at Tchaga. The extension of Lode 1 indicates a potential increase to the size of our upcoming Maiden Resource Estimate. Drilling is ongoing at Tchaga, and we anticipate receipt of more results shortly."*



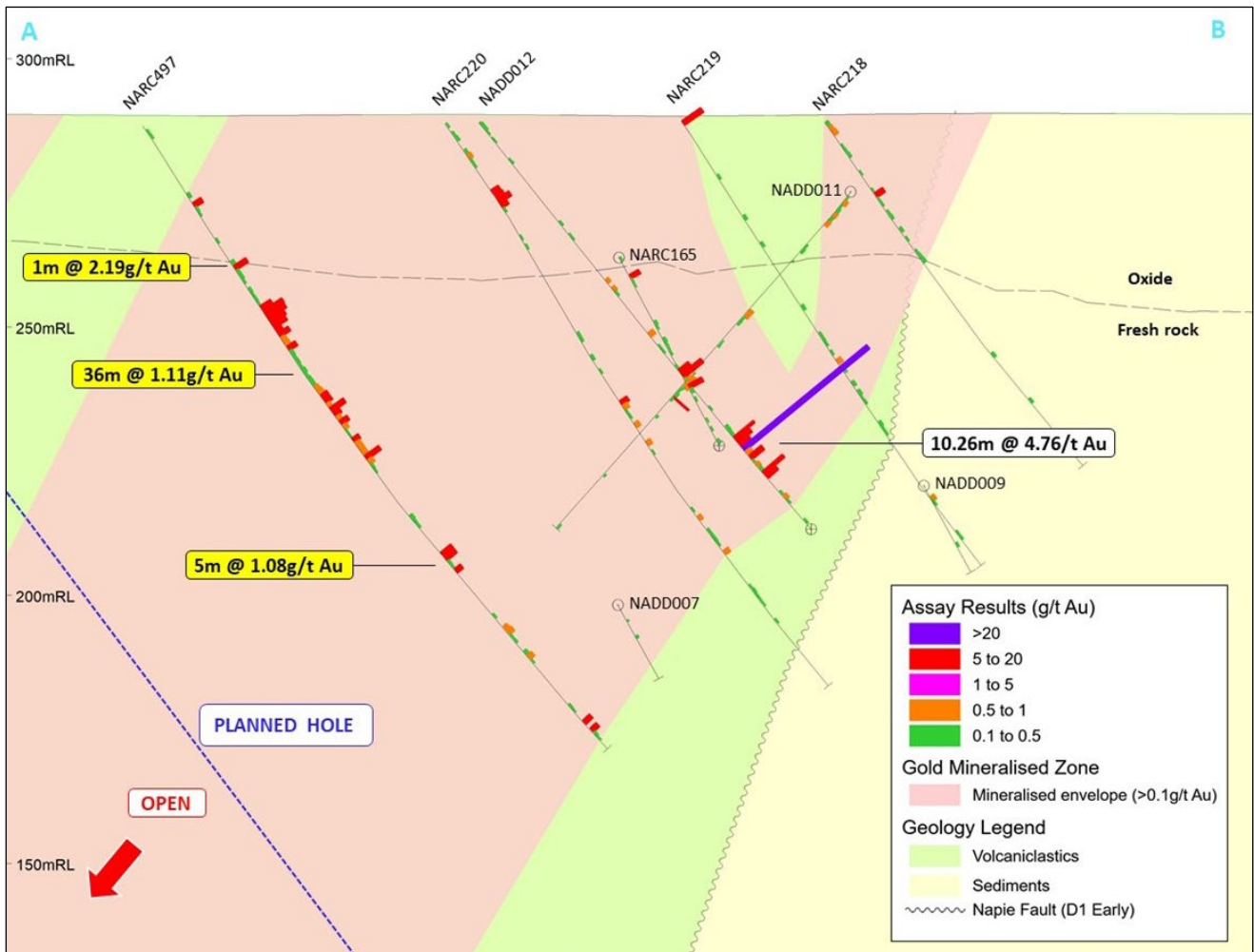
**Figure 1: Select new (yellow) and previous (white) gold intercepts on Lode 1 at Tchaga (see location on Figure 4) - Note the 140m extension of the mineralised zone to the SW and potential for further growth to the south**

Mako Gold Limited (“Mako” or “the Company”; ASX:MKG) is pleased to advise that it has received assay results for further reverse circulation (RC) drill holes from the ongoing drilling program at the Tchaga Prospect at the Company’s flagship Napié Project in Côte d’Ivoire.

Drill results are reported for Lode 1 of the Tchaga Prospect, where the Company continues to grow the footprint of the mineralised zone. The current drill results have **increased the footprint 140m to the southwest** which has now **increased the north-south mineralised footprint of the entire Tchaga Prospect to 2km**.

Significant potential exists to further extend the mineralised footprint at Tchaga with **large portions of the +40ppb soil geochemical anomaly remaining undrilled** (Figure 4). The area surrounding the creek at the southern extent of Tchaga is not conducive to soil sampling as it is in a flood zone. The soil anomaly carries on south of the creek and extends to the Gogbala Prospect.

Gold mineralisation at Tchaga occurs in northwest-dipping stacked lenses that repeat along the Napié Shear Zone. **Mineralisation is shallow** (surface to 200m) and **remains open** along strike and at depth.



**Figure 2: Section AB looking northeast with select new (yellow) and previous (white) gold intercepts**

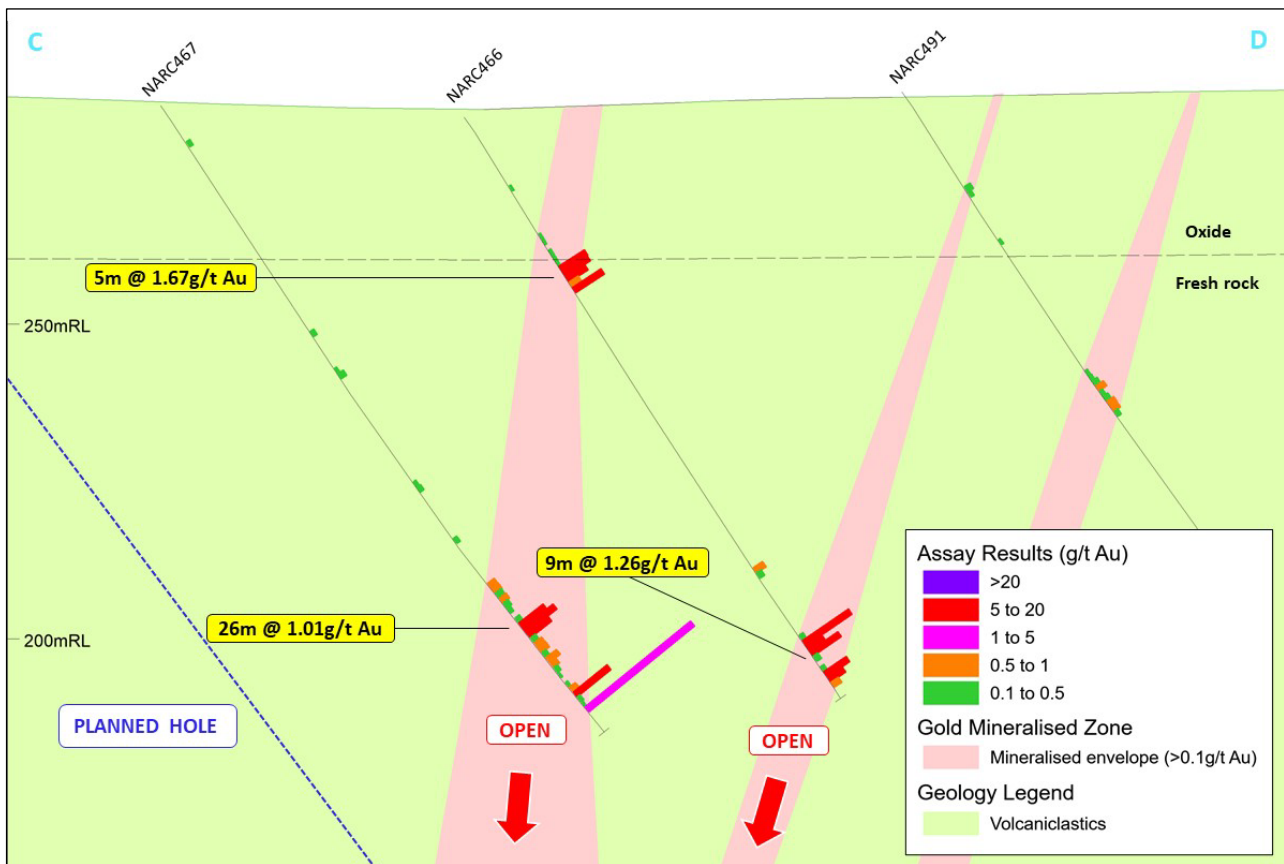
Intervals above 0.5g/t Au cut-off (unless otherwise noted) are reported in Appendix 1. A map of the Tchaga drill hole locations is shown in Appendix 2.

Select significant results from previous drilling at Tchaga are shown below. A few of these results are shown in Figures 1 to 5 alongside select new results<sup>1</sup>:

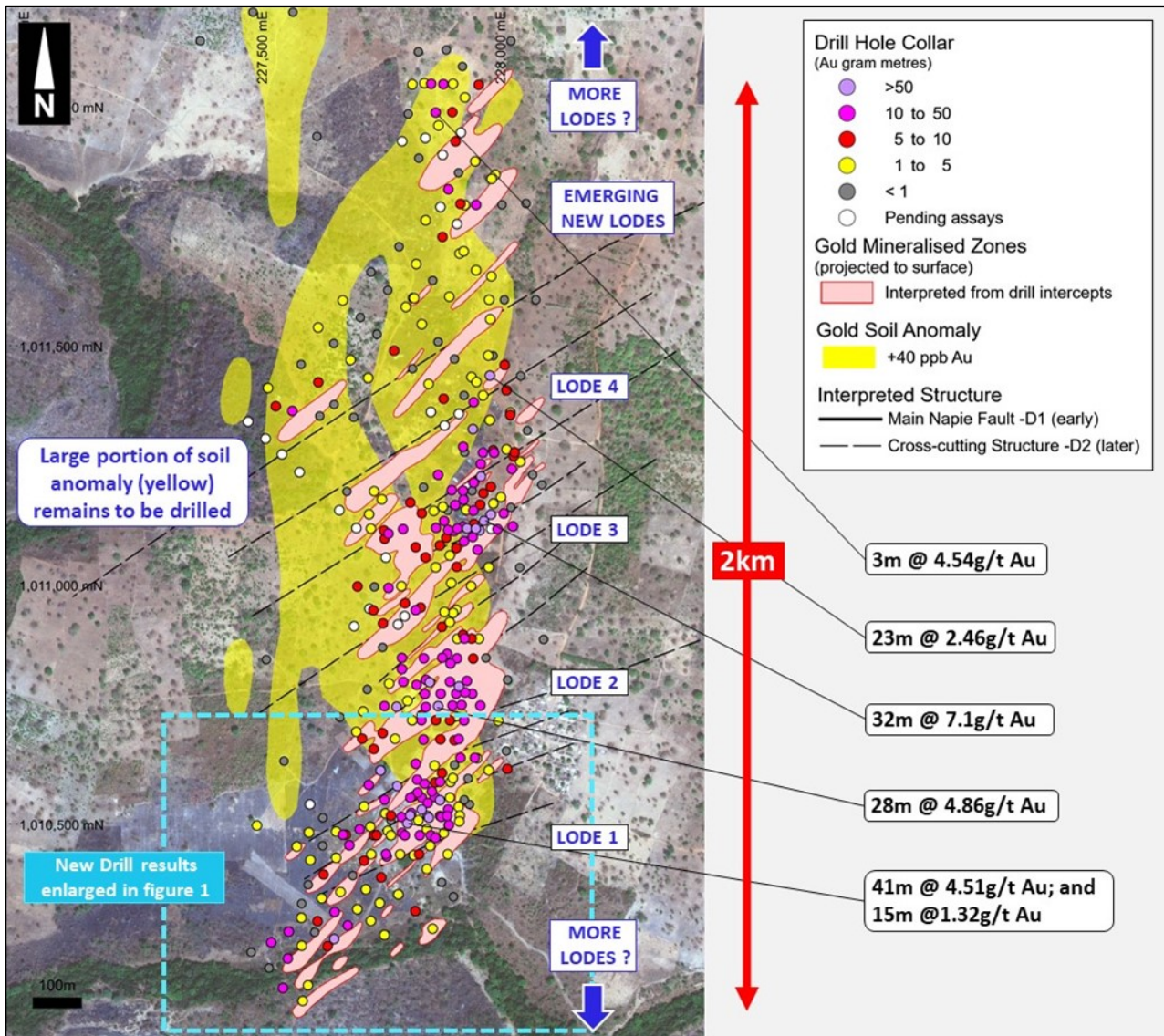
- **41m at 4.51g/t Au** from 17m in NARC216
- **32m at 7.1g/t Au** from 13m in NARC184
- **13m at 20.82g/t Au** from 32m in NARC145
- **9m at 22.73g/t Au** from 36m in NARC184
- **36m at 3.09g/t Au** from 43m in NARC107
- **28m at 4.86g/t Au** from 83m in NARC057

<sup>1</sup> Refer to ASX announcements dated 9 July 2018, 13 March 2019, 3 December 2019, 5 March 2020, 15 July 2020, 11 August 2020, 17 November 2020, 15 March 2021, 28 April 2021, 26 May 2021, and 4 June 2021

- **26m at 4.34g/t Au** from surface in NARC214
- **25m at 3.43g/t Au** from 53m in NARC017
- **14m at 5.46g/t Au** from surface in NARC124
- **18m at 3.25g/t Au** from 39m in NARC080
- **23m at 2.46g/t Au** from 15m in NARC084
- **17m at 3.06g/t Au** from 129m in NARC404DD
- **7.7m at 11.65g/t Au** from 169m in NARC058DD
- **4m at 8.24g/t Au** from 70m in NARC130



**Figure 3: Section CD looking northeast with select new gold intercepts**



**Figure 4: Tchaga Prospect - Select previous (one per lode) gold intercepts – note the abundance of purple (>50 gram metre) and pink (10-50 gram metre) drill intercepts - also note the +40ppb gold soil geochem anomaly in shaded yellow which highlights future drill targets to extend known mineralisation - the creek in the south floods the area which explains why there is no soil anomaly present proximal to the creek**

### Significance of Results

The latest results validate the Company’s strategy of expanding previously identified mineralised lodes on the Tchaga Prospect and continue to increase the potential size of the upcoming maiden Mineral Resource Estimate (**MRE**). Large parts of the soil anomaly at Tchaga remain undrilled which provides potential upside for growth, following the maiden MRE. In addition, Mako plans to keep drilling to the south to find new lodes in the immediate area and along the 30km-long Napié Fault.

The exploration approach used at Tchaga will be applied to the whole of the Napié Project. Gogbala and Tchaga North prospects which are located on the same +23km soil anomaly and coincident 30km-long Napié

Fault have already delivered wide and high-grade drill results in wide spaced drilling completed to date (Figure 5).

Mako believes that the opportunity exists to identify multiple large gold deposits within the 30km-long permit.

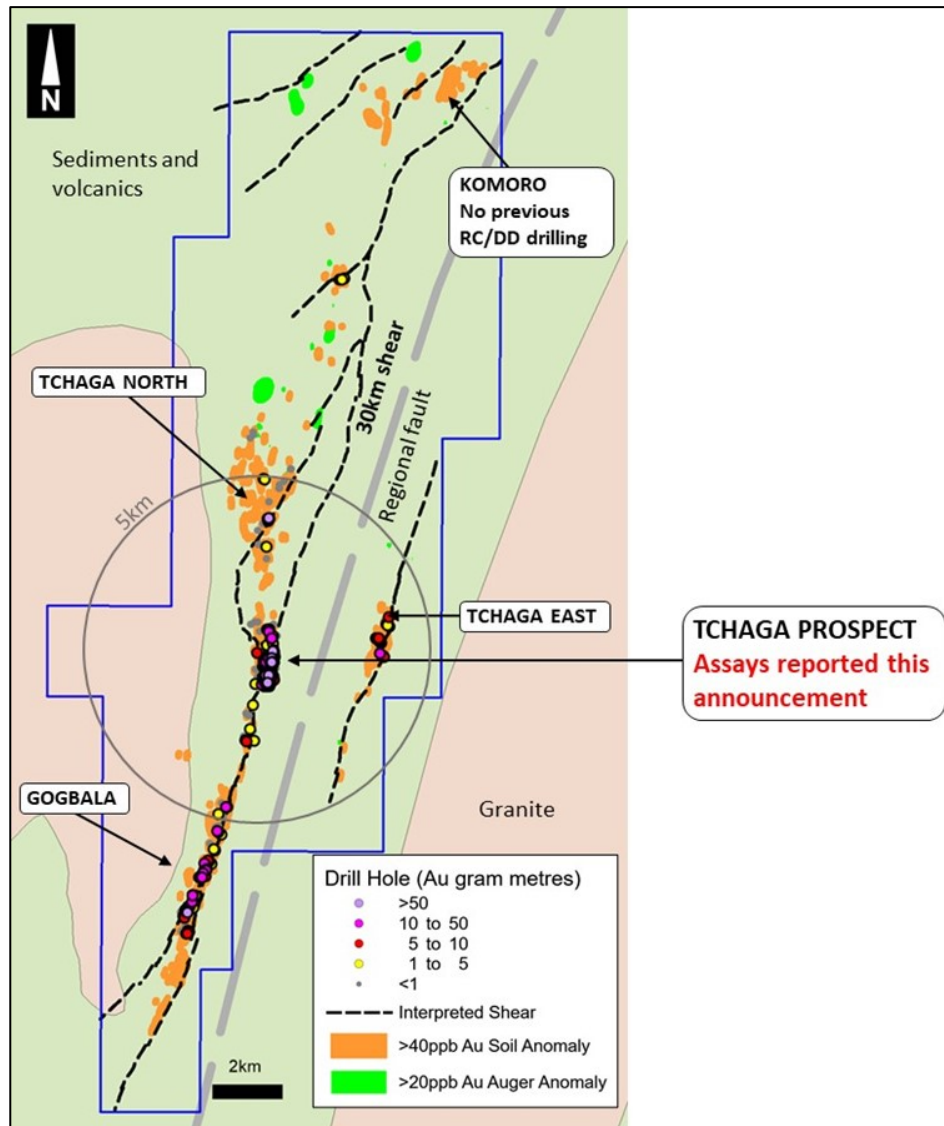


Figure 5: Napié Project – Prospect location map

This announcement has been approved by the Board of Mako Gold

For further information please contact:

**Peter Ledwidge**

Managing Director

Ph: +61 417 197 842

Email: [pledwidge@makogold.com.au](mailto:pledwidge@makogold.com.au)

**Paul Marshall**

Company Secretary/CFO

Ph: +61 433 019 836

Email: [pmarshall@makogold.com.au](mailto:pmarshall@makogold.com.au)

## ABOUT MAKO GOLD

Mako Gold Limited (**ASX:MKG**) is an Australian based exploration Company focused on advancing its flagship Napié Gold Project (296km<sup>2</sup>) in Côte d'Ivoire located in the West African Birimian Greenstone Belts which hosts more than 70 +1Moz gold deposits. Senior management has a proven track record of high-grade gold discoveries in West Africa and aim to deliver significant high-grade gold discoveries.

Mako Gold entered into a farm-in and joint venture agreement on the Napié Permit with Occidental Gold SARL, a subsidiary of West African gold miner Perseus Mining Limited (ASX/TSX:PRU). Mako currently own a 51% interest in Napié and has the ability to earn up to 75% interest through the delivery of a Feasibility Study<sup>1</sup>.

**Mako has recently entered into a binding agreement with Perseus Mining (ASX:PRU) to consolidate ownership from 51% to 90%.<sup>2</sup>**

In addition, Mako Gold has 100% ownership of the Korhogo Gold Project comprising two permits (296km<sup>2</sup>) covering 17km of faulted greenstone/ granite contact (high-grade gold targets) located within 30km of Barrick's operating Tongon Gold Mine (4.9Moz Au) in a highly prospective greenstone belt that also hosts Montage Gold's 3.2Moz Kone gold deposit, both located in Côte d'Ivoire, as well as Endeavour's 2.7Moz Wahgnion gold mine across the border in Burkina Faso (Figure 6).

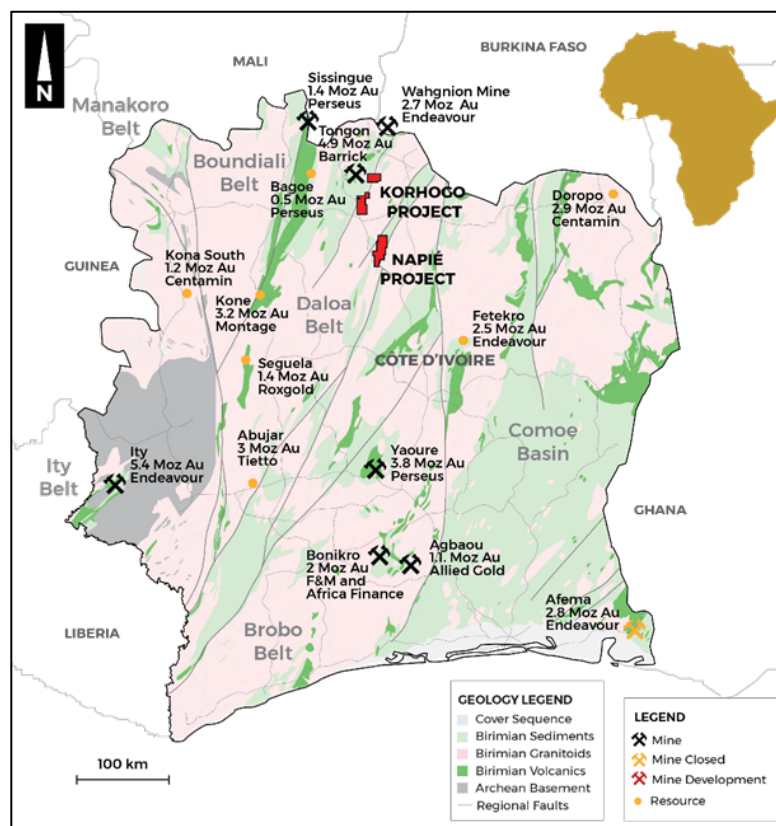


Figure 6: Côte d'Ivoire - Mako projects on simplified geology with mines and deposits

<sup>1</sup> For details of the agreement please refer to Section 9.1 of Mako Gold's Prospectus and section 4.6 of Mako Gold's Supplementary Prospectus, lodged on the ASX on 13 April 2018.

<sup>2</sup> Refer to ASX release dated 29 June 2021

**Competent Person's Statement**

The information in this report that relates to Exploration Results is based on information compiled by Mrs Ann Ledwidge B.Sc.(Hon.) Geol., MBA, who is a Member of The Australian Institute of Geoscientists (AIG). Mrs Ledwidge is a full-time employee and a shareholder of the Company. Mrs Ledwidge has sufficient experience which is relevant to the style of mineralisation and type of deposit under consideration and to the activity which she is undertaking to qualify as a Competent Person as defined in the 2012 Edition of the 'Australasian Code for Reporting of Exploration Results, Mineral Resources and Ore Reserves'. Mrs Ledwidge consents to the inclusion in the report of the matters based on his information in the form and context in which it appears.

**Disclaimer**

This Announcement ("Announcement") is for informational purposes only and is not a prospectus, disclosure document or offer document under the Corporations Act 2001 (Cth) ("Corporations Act") or any other law. This Announcement does not constitute, and is not to be construed as, an offer to issue or sell, or a solicitation of an offer or invitation to subscribe for, buy or sell securities in Mako Gold Limited ACN 606 241 829 ("Mako"). The material in this announcement has been prepared by the Company and contains summary information about the Company's activities. The truth or accuracy of the information in this announcement cannot be warranted or guaranteed by the Company. The information in this announcement is of a general background nature and does not purport to be complete or contain all the information security holders would require to evaluate their investment in the Company. It should be read in conjunction with the Company's other periodic and continuous disclosure announcements which are available at [www.makogold.com.au](http://www.makogold.com.au). Other than to the extent required by law (and only to that extent) the Company and its officers, employees and professional advisors make no reannouncement or warranty (express or implied) as to, and assume no responsibility or liability for, the contents of this announcement.

This Announcement does not purport to contain all information that recipients may require to make an informed assessment of Mako or its securities. Statements in this Announcement are made only as at the date of this Announcement unless otherwise stated and remain subject to change without notice. No reannouncement or warranty, express or implied, is made as to the fairness, accuracy or completeness of the information or opinions contained in this Announcement, or any omission from this Announcement. To the maximum extent permitted by law, Mako disclaims any responsibility to inform any recipient of this Announcement on any matter that subsequently comes to its notice which may affect the information contained in this Announcement, and undertakes no obligation to provide any additional or updated information whether as a result of new information, future events or results or otherwise.

**Not financial product advice or offer**

Information in this announcement, including forecast financial information, should not be considered as advice or a recommendation to investors or potential investors in relation to holding, purchasing or selling securities. Before acting on any information, you should consider the appropriateness of the information having regard to these matters, any relevant offer document and in particular, you should seek independent financial advice.



## Appendix 1 – Summary of drilling results

Hole No.	East (WGS84)	North (WGS84)	RL (m)	Length (m)	Dip	Az (true)	From (m)	To (m)	Width (m)	Au (g/t)
NARC460	227684	1010290	284	100	-55	135	36	38	2	9.42
							Incl 36	37	1	14.32
NARC461	227656	1010318	285	121	-55	135	73	75	2	1.54
							82	83	1	23.47
NARC462	227629	1010347	284	125	-55	135	86	88	2	1.00
NARC463	227601	1010375	284	120	-55	135	No significant results			
NARC464	227519	1010201	283	120	-55	135	No significant results			
NARC465	227481	1010234	284	120	-55	135	No significant results			
NARC466	227558	1010221	283	110	-55	135	28	33	5	1.67
							99	108	9	1.26 <sup>1</sup>
NARC467	227524	1010255	285	122	-55	135	92	118	26	1.01 <sup>2</sup>
							Incl 92	96	4	0.53 <sup>3</sup>
							100	109	9	1.09 <sup>3</sup>
							113	118	5	2.55 <sup>3</sup>
NARC468	227587	1010248	283	100	-55	135	26	27	1	1.27
							69	70	1	2.67
NARC469	227560	1010277	285	122	-55	135	60	64	4	1.09
							70	72	2	2.02
							75	76	1	1.77
							86	95	9	1.33
							112	119	7	0.79
NARC470	227641	1010247	284	100	-55	135	88	90	2	3.25
NARC471	227614	1010276	285	122	-55	135	No significant results			
NARC472	227587	1010306	285	127	-55	135	39	40	1	1.20
							81	90	9	0.35 <sup>2</sup>
NARC473	227761	1010270	283	106	-55	135	71	74	3	0.40 <sup>2</sup>
NARC474	227732	1010300	284	100	-55	135	39	40	1	1.43
NARC475	227577	1010455	284	100	-55	135	15	19	4	0.84
NARC476	227606	1010427	284	120	-55	135	88	93	5	0.63
NARC477	227751	1010337	284	100	-55	135	38	39	1	2.50
							50	54	4	0.66
							76	78	2	2.40
NARC478	227722	1010366	284	103	-55	135	31	32	1	1.28
							73	74	1	1.67
NARC479	227694	1010394	284	114	-55	135	No significant results			
NARC480	227660	1010431	283	104	-55	135	96	98	2	0.66
NARC481	227602	1010485	284	120	-55	135	76	78	2	1.37
							107	108	1	1.70

Hole No.	East (WGS84)	North (WGS84)	RL (m)	Length (m)	Dip	Az (true)	From (m)	To (m)	Width (m)	Au (g/t)
							114	115	1	3.73
NARC482	227631	1010457	284	102	-55	135	No significant results			
NARC483	227660	1010486	284	100	-55	135	22	23	1	1.27
NARC484	227631	1010515	284	100	-55	135	No significant results			
NARC489	227589	1010132	287	121	-55	135	30	32	2	1.11
NARC490	227550	1010159	286	120	-55	135	105	112	7	1.95
NARC491	227601	1010165	286	100	-55	135	55	62	7	0.41 <sup>2</sup>
NARC497	227829	1010629	289	145	-55	135	17	18	1	1.43
							31	32	1	2.19
							40	76	36	1.11 <sup>2</sup>
							Incl 40	50	10	1.92 <sup>3</sup>
							58	76	18	0.99 <sup>3</sup>
							97	102	5	1.08
							115	117	2	0.84
138	141	3	0.93							

<sup>1</sup> 3m of internal waste

<sup>2</sup> 0.25g/t Au cut-off

<sup>3</sup> Interval within broader mineralised interval at 0.5g/t Au cut-off

Results are reported with a 0.5g/t cut-off grade with 2m internal waste unless noted otherwise. Intercepts of 1m at less than 1g/t Au are not considered significant and are not reported. Areas shaded in blue represent assays between 5 to 10 gram/metres (length x Au grade), and areas shaded in yellow represent assays over 10 gram/metres and are considered highly significant.

Appendix 2 –Location map for drill holes reported in current announcement



## Appendix 3 - JORC 2012 Table 1 Reporting

### Section 1 - Sampling techniques and Data

Criteria	JORC Code explanation	Commentary
<b>Sampling techniques</b>	<i>Nature and quality of sampling (eg cut channels, random chips, or specific specialised industry standard measurement tools appropriate to the minerals under investigation, such as down hole gamma sondes, or handheld XRF instruments, etc). These examples should not be taken as limiting the broad meaning of sampling.</i>	This report relates to results for reverse circulation (RC) and diamond drilling (DD) on the Napié Permit. Drilling on the Napié Permit is at an early stage. The focus of this program was on exploration drilling to test the lateral and strike continuity in areas of previously reported gold intercepts at the Tchaga Prospect and to test new conceptual targets outside of the main area.
	<i>Include reference to measures taken to ensure sample representivity and the appropriate calibration of any measurement tools or systems used.</i>	Sampling was undertaken along the entire length of RC drill holes. Each 1m RC drill hole interval was collected in a plastic sample bag. A sub-sample was collected using a riffle splitter to obtain a 3-6kg sample for laboratory analysis. DD holes were cut and sampled at nominal 1m lengths, except where lengths were altered to match geological boundaries. Sampling was undertaken along the entire length of DD drill holes.
	<i>Aspects of the determination of mineralisation that are Material to the Public Report. In cases where 'industry standard' work has been done this would be relatively simple (eg 'reverse circulation drilling was used to obtain 1 m samples from which 3 kg was pulverised to produce a 30 g charge for fire assay'). In other cases, more explanation may be required, such as where there is coarse gold that has inherent sampling problems. Unusual commodities or mineralisation types (eg submarine nodules) may warrant disclosure of detailed information.</i>	RC samples were submitted for lab analysis as 1m intervals. The samples submitted to the lab consisted of a circa 3-6kg riffle split of the 1m interval. Diamond core was cut in half to provide circa 2 to 4kg samples for submission to the laboratory. Samples were submitted to Bureau Veritas Minerals in Abidjan for sample preparation during which the field sample was dried, the entire sample crushed to 70% passing 2mm, with a 1.5kg split by riffle splitter pulverized to 85% passing 75 microns in a ring and puck pulveriser. From this, a 200g subsample was collected and assayed for gold by 50g fire assay with AAS finish.
<b>Drilling techniques</b>	<i>Drill type (eg core, reverse circulation, open-hole hammer, rotary air blast, auger, Bangka, sonic, etc) and details (eg core diameter, triple or standard tube, depth of diamond tails, face-sampling bit or other type, whether core is oriented and if so, by what method, etc).</i>	RC drilling was carried out using a 5 3/8-inch face sampling hammer using an Austex900 multipurpose drill rig. The same drill rig was used to recover HQ size core. Core was oriented using a Reflex Ace tool.
<b>Drill sample recovery</b>	<i>Method of recording and assessing core and chip sample recoveries and results assessed.</i>	RC recoveries were determined by weighing each drill metre bag. DD recoveries were measured by comparing the length of core relative to the length drilled.
	<i>Measures taken to maximise sample recovery and ensure representative nature of the samples.</i>	The drill metre intervals collected were weighed to ensure consistency of sample size and monitor sample recoveries. DD drilling used triple tube technique to maximize recovery in poorly consolidated ground. Recoveries were measured at the drill rig at the time of drilling and monitored by the rig geologist.
	<i>Whether a relationship exists between sample recovery and grade and whether sample bias may have occurred due to preferential loss/gain of fine/coarse material.</i>	No relationship has been observed between sample recovery and grade.
<b>Logging</b>	<i>Whether core and chip samples have been geologically and geotechnically logged to a level of detail to support appropriate Mineral Resource estimation, mining studies and metallurgical studies.</i>	Geological logging was carried out on all RC chips and drill core by Mako Gold geologists. This included lithology, alteration, intensity of oxidation, intensity of foliation, sulphide percentages and vein percentages.
	<i>Whether logging is qualitative or quantitative in nature. Core (or costean, channel, etc) photography.</i>	A standard lithological and alteration legend is used to produce consistent qualitative logs. This legend includes descriptions, and a visual legend with representative photos for comparison purposes. Sulphide and vein content (expressed as %) are quantitative in nature. Intensities are qualitative in nature. A sample of RC chips are washed and retained in chip trays marked with hole number and down hole interval. All RC chip trays are photographed. Structural measurements from core are quantitative in nature. The half-core not sent to the laboratory remains in core trays marked with the hole number and metre marks indicating length drilled. All DD core is photographed as whole core and again as half core.
	<i>The total length and percentage of the relevant intersections logged.</i>	All drill holes are logged in full.

Criteria	JORC Code explanation	Commentary
<b>Sub-sampling techniques and sample preparation</b>	<i>If core, whether cut or sawn and whether quarter, half or all core taken.</i>	Not applicable to RC drilling. Core is sawn into half core and the right side (looking down the hole) was sent to the laboratory. Duplicate samples are taken by sawing half core into quarter core.
	<i>If non-core, whether riffled, tube sampled, rotary split, etc and whether sampled wet or dry.</i>	RC samples are riffle split in the field to a notional 3-6kg sample per metre drilled, with the splitting method (single tier or 3-tier) based on the original sample weight. Splitting method is recorded for each sample. The use of a booster and auxiliary compressor provide dry samples for depths below the water table.
	<i>For all sample types, the nature, quality and appropriateness of the sample preparation technique.</i>	A riffle splitter is used for RC samples to provide representative sub-samples. A core saw is used to cut DD samples in half, as per industry standards. Industry standard sample preparation is conducted under controlled conditions within the laboratory and is considered appropriate for the sample types.
	<i>Quality control procedures adopted for all sub-sampling stages to maximise representivity of samples.</i>	QAQC samples, consisting of a minimum of 2 blanks, 1 duplicate and 1 standard, were submitted with each drill hole. Regular reviews of the sampling were carried out by the supervising geologist to ensure all procedures were followed and best industry practice carried out. Sample sizes and preparation techniques are considered appropriate.
	<i>Measures taken to ensure that the sampling is representative of the in-situ material collected, including for instance results for field duplicate/second-half sampling.</i>	Duplicate sampling results are reviewed regularly. RC chips and DD core are inspected in areas with reported gold assay results to visually ascertain that results are consistent with the style of mineralisation expected.
	<i>Whether sample sizes are appropriate to the grain size of the material being sampled.</i>	The sample sizes are considered to be appropriate for the nature of mineralisation within the project area.
<b>Quality of assay data and laboratory tests</b>	<i>The nature, quality and appropriateness of the assaying and laboratory procedures used and whether the technique is considered partial or total.</i>	Samples were assayed at Bureau Veritas Minerals in Abidjan using 50g fire assay for gold which is considered appropriate for this style of mineralisation. Fire assay is considered total assay for gold.
	<i>For geophysical tools, spectrometers, handheld XRF instruments, etc, the parameters used in determining the analysis including instrument make and model, reading times, calibrations factors applied and their derivation, etc.</i>	No geophysical tools have been used to determine assay results for any elements.
	<i>Nature of quality control procedures adopted (eg standards, blanks, duplicates, external laboratory checks) and whether acceptable levels of accuracy (i.e. lack of bias) and precision have been established.</i>	Monitoring of results of duplicates, blanks and standards is conducted regularly. Internal laboratory QAQC checks are reported and reviewed regularly by Mako's Database Geologist.
<b>Verification of sampling and assaying</b>	<i>The verification of significant intersections by either independent or alternative Company personnel.</i>	Significant intersections are routinely monitored through review of drill chip and core photographs and by site visits by the General Manager Exploration.
	<i>The use of twinned holes.</i>	No twinning of holes was undertaken in this program which is at an early stage of exploration.
	<i>Documentation of primary data, data entry procedures, data verification, data storage (physical and electronic) protocols.</i>	Primary data is collected on field sheets and then compiled on standard Excel templates for validation and data management. The database is maintained in Microsoft Access.
	<i>Discuss any adjustment to assay data.</i>	All samples returning assay values below detection limit are assigned a value of 0.005g/t Au (half of the lower detection limit). No other adjustments have been applied to assay data.
<b>Location of data points</b>	<i>Accuracy and quality of surveys used to locate drill holes (collar and down-hole surveys), trenches, mine workings and other locations used in Mineral Resource estimation.</i>	Drill hole collar locations are initially set out (and reported) using a hand-held GPS with a location error of +/- 5m. Collar positions are subsequently located using a hand-held GPS set to average for a minimum of 5 minutes. Elevations are extracted from digital terrain model data as handheld GPS elevations are inconsistent. Down hole surveys are routinely commenced from 6m down hole depth and additional readings taken at approximately 30m intervals thereafter.
	<i>Specification of the grid system used.</i>	The grid system used is WGS84. A northern hemisphere zone is applied that is applicable to the location of individual project areas.
	<i>Quality and adequacy of topographic control.</i>	A detailed topographic survey of the project area has not been conducted.
<b>Data spacing and distribution</b>	<i>Data spacing for reporting of Exploration Results.</i>	Drill holes are irregularly located, as they are based on wide-spaced exploration targets. A limited number of drill holes are drilled along sections spaced 20m to 50m apart at the Tchaga Prospect.

Criteria	JORC Code explanation	Commentary
	<i>Whether the data spacing, and distribution is sufficient to establish the degree of geological and grade continuity appropriate for the Mineral Resource and Ore Reserve estimation procedure(s) and classifications applied.</i>	Drilling reported is at an early stage of exploration and has not been used to estimate any mineral resource or reserve.
	<i>Whether sample compositing has been applied.</i>	No sample compositing was done.
<b>Orientation of data in relation to geological structure</b>	<i>Whether the orientation of sampling achieves unbiased sampling of possible structures and the extent to which this is known, considering the deposit type.</i>	Exploration is at an early stage and, as such, knowledge on exact location of mineralisation and its relation to lithological and structural boundaries is not accurately known. However, the current hole orientation is considered appropriate for the program to reasonably assess the prospectivity of known structures interpreted from surface and other data sources.
	<i>If the relationship between the drilling orientation and the orientation of key mineralised structures is considered to have introduced a sampling bias, this should be assessed and reported if material.</i>	No orientation-based sampling bias has been identified in the data to date.
<b>Sample security</b>	<i>The measures taken to ensure sample security.</i>	Samples are stored securely on the project site under supervision of security guards and/or Company personnel. Company personnel maintain chain of custody of the samples prior to collection from site by laboratory personnel. Documentation is prepared to record handover of samples to laboratory personnel.
<b>Audits or reviews</b>	<i>The results of any audits or reviews of sampling techniques and data.</i>	A cursory review of the sampling techniques and data, appropriate to this early stage of exploration, was previously conducted. As a result of the review, sample size was increased from a nominal 2kg to 5kg. No change was made to DD sample size.

## Section 2 - Reporting of Exploration Results

Criteria	JORC Code explanation	Commentary
<b>Mineral tenement and land tenure status</b>	<i>Type, reference name/number, location and ownership including agreements or material issues with third parties such as joint ventures, partnerships, overriding royalties, native title interests, historical sites, wilderness or national park and environmental settings.</i>	The Napié Permit was granted to Occidental Gold SARL, a 100% owned, Ivorian registered, subsidiary of Perseus Mining Ltd, by decree No. 2012-1164 on 19th December 2012 and was valid for three years. The first, three-year, renewal of the permit was granted to Occidental Gold by decree No: 181 /MIM/DGMG DU on 19 December 2016. The second, three-year renewal was granted to Occidental Gold by decree No: 00018/MIM/DGMG on 21 March 2019. On 7th September 2017 Mako Gold Limited signed a Farm-In and Joint Venture Agreement with Occidental Gold SARL. The agreement gives Mako the right to earn 51% of the Napié Permit by pending US\$ 1.5M on the property within three years and the right to earn 75% by sole funding the property to completion of a Feasibility Study. Mako has achieved the 51% earn-in ahead of schedule.
	<i>The security of the tenure held at the time of reporting along with any known impediments to obtaining a licence to operate in the area.</i>	The tenement is in good standing and no known impediments exist.
<b>Exploration done by other parties</b>	<i>Acknowledgment and appraisal of exploration by other parties.</i>	Previous exploration was conducted by Occidental Gold (the permit owner) and consisted of surface geochemical sampling, auger sampling, an airborne geophysical survey and interpretation, RAB drilling and limited RC drilling (2 holes). Refer to Section 4.6 and Annexure A of Mako Gold's Prospectus lodged on the ASX on 13 April 2018 for details on previous exploration.
<b>Geology</b>	<i>Deposit type, geological setting and style of mineralisation.</i>	The Napié Permit is located within the Lower Proterozoic Birimian Dalao greenstone belt. The style of mineralisation sought is structurally controlled orogenic gold, within an interpreted shear zone related to a regional-scale fault and secondary splays.

Criteria	JORC Code explanation	Commentary
<b>Drill hole Information</b>	<p>A summary of all information material to the understanding of the exploration results including a tabulation of the following information for all Material drill holes:</p> <ul style="list-style-type: none"> <li>○ easting and northing of the drill hole collar</li> <li>○ elevation or RL (Reduced Level – elevation above sea level in metres) of the drill hole collar</li> <li>○ dip and azimuth of the hole</li> <li>○ down hole length and interception depth</li> <li>○ hole length.</li> </ul>	<p>Drill collars are shown in the figures within the report and in Appendix 2. Significant intervals have been reported in the body of the report.</p> <p>A summary of drill information is contained in Appendix 1 of this report.</p>
<b>Data aggregation methods</b>	<p>In reporting Exploration Results, weighting averaging techniques, maximum and/or minimum grade truncations (eg cutting of high grades) and cut-off grades are usually Material and should be stated.</p>	<p>A nominal 0.5g/t Au lower cut-off has been applied incorporating up to 2m of internal dilution below the reporting cut-off grade. Intercepts of 1m less than 1g/t Au are not considered significant and have not been reported.</p> <p>All reported assays have been length weighted.</p> <p>No density weighting or high-grade cuts have been applied.</p>
	<p>Where aggregate intercepts incorporate short lengths of high-grade results and longer lengths of low-grade results, the procedure used for such aggregation should be stated and some typical examples of such aggregations should be shown in detail.</p>	<p>High grade gold intervals internal to broader zones of mineralisation are reported as included intervals.</p>
	<p>The assumptions used for any reporting of metal equivalent values should be clearly stated.</p>	<p>No metal equivalent values have been used for reporting exploration results.</p>
<b>Relationship between mineralisation widths and intercept lengths</b>	<p>These relationships are particularly important in the reporting of Exploration Results.</p> <p>If the geometry of the mineralisation with respect to the drill hole angle is known, its nature should be reported.</p> <p>If it is not known and only the down hole lengths are reported, there should be a clear statement to this effect (eg ‘down hole length, true width not known’).</p>	<p>Intersection lengths are reported as down hole lengths (the distance from the surface to the end of the hole, as measured along the drill trace). True widths are uncertain at this time (although an approximation has been provided on some sections with higher drillhole density) as the orientation of mineralisation is not understood at this early stage of exploration.</p>
<b>Diagrams</b>	<p>Appropriate maps and sections (with scales) and tabulations of intercepts should be included for any significant discovery being reported. These should include, but not be limited to a plan view of drill hole collar locations and appropriate sectional views.</p>	<p>Refer to Figures contained within this report.</p>
<b>Balanced reporting</b>	<p>Where comprehensive reporting of all Exploration Results is not practicable, representative reporting of both low and high grades and/or widths should be practiced to avoid misleading reporting of Exploration Results.</p>	<p>All results are reported with the exception of intercepts of 1m less than 1g/t Au which are not considered significant and have not been reported.</p>
<b>Other substantive exploration data</b>	<p>Other exploration data, if meaningful and material, should be reported including (but not limited to): geological observations; geophysical survey results; geochemical survey results; bulk samples – size and method of treatment; metallurgical test results; bulk density, groundwater, geotechnical and rock characteristics; potential deleterious or contaminating substances.</p>	<p>No other exploration data that is considered meaningful and material has been omitted from this report</p>
<b>Further work</b>	<p>The nature and scale of planned further work (eg tests for lateral extensions or depth extensions or large-scale step-out drilling). Diagrams clearly highlighting the areas of possible extensions, including the main geological interpretations and future drilling areas, provided this information is not commercially sensitive.</p>	<p>RC and diamond drilling is planned along strike and at depth to follow up the results reported in this announcement.</p> <p>An IP survey and follow up drilling is planned at the Gogbala Prospect.</p>