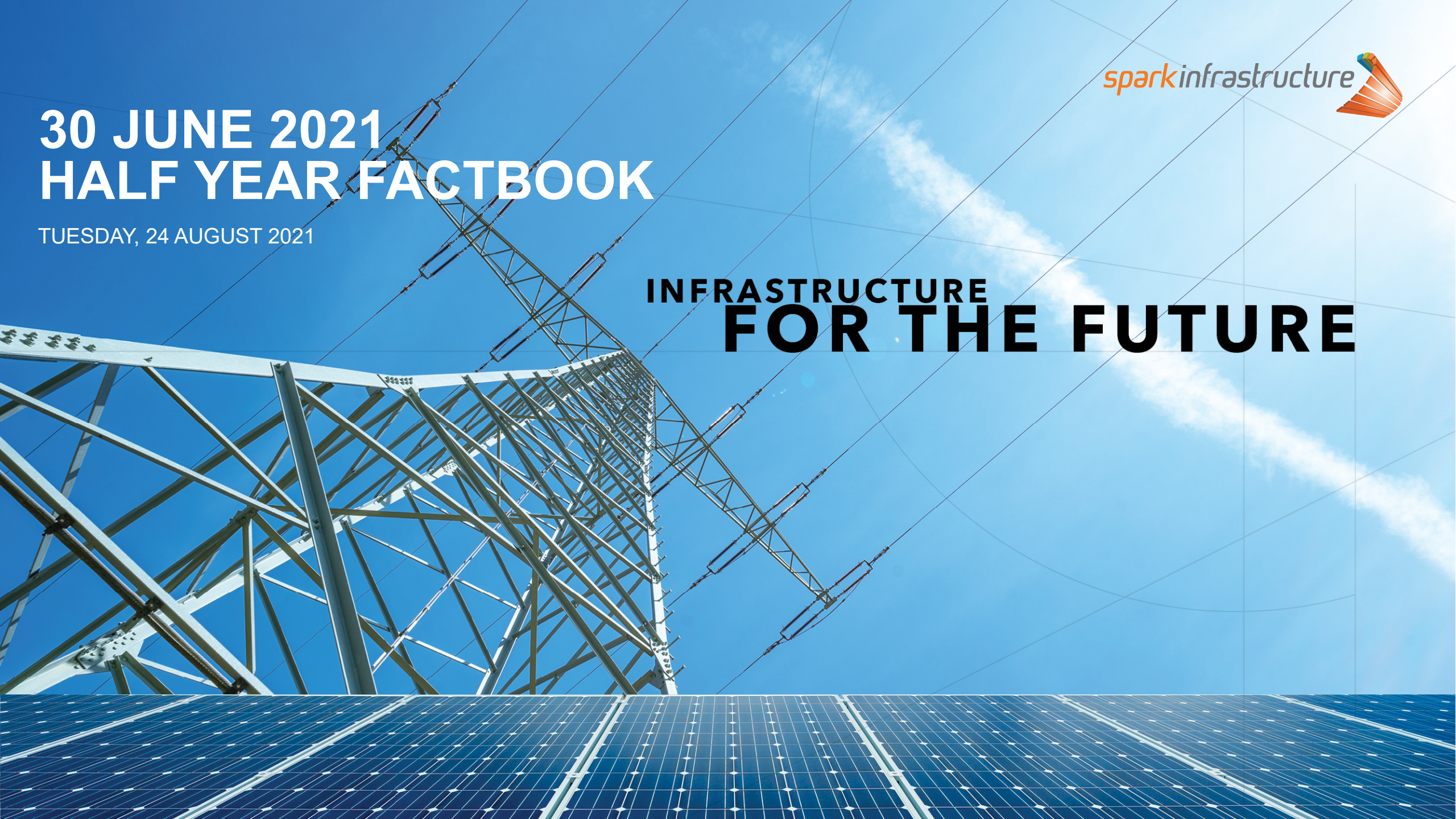


30 JUNE 2021 HALF YEAR FACTBOOK

TUESDAY, 24 AUGUST 2021

INFRASTRUCTURE
FOR THE FUTURE



CONTENTS

Spark Infrastructure Financial Results	03
Victoria Power Networks Financial Results	06
SA Power Networks Financial Results	10
TransGrid Financial Results	14
Corporate Contact Details	19

Spark Infrastructure RE Limited ACN 114 940 984 AFSL 290436 as responsible entity of Spark Infrastructure Trust ARSN 116 870 725

The following information represents the total results for Victoria Power Networks Pty Limited, SA Power Networks and TransGrid. Spark Infrastructure owns 49% of Victoria Power Networks Pty Limited and SA Power Networks and 15.01% of TransGrid.

The following information for TransGrid represents an aggregation of NSW Electricity Networks Operations Holdings Trust (TOTH) and its controlled entities, and NSW Electricity Networks Assets Holdings Trust (TATH) and its controlled entities, recognising that TOTH does not control TATH and that TATH does not control TOTH. Transactions and balances between the entities have been eliminated.

This package is provided for information purposes only. It does not form part of the financial report for the period ended 30 June 2021 and should not be relied on for decision making purposes.

IMPORTANT INFORMATION AND DISCLAIMER

This information has been prepared by Spark Infrastructure for information purposes only, to assist analysts in their own review of Spark Infrastructure's financial results for the financial period ended 30 June 2021. Numbers may not add due to rounding. The information in this pack has not been audited and is not intended to replace the audited financial statements of Spark Infrastructure, which it is important that you review. This material is provided to you as a person who holds an Australian financial services licence or is a representative of a licence holder, or as a person who is a wholesale client within the meaning of section 761G or 761GA of the Corporations Act 2001 (Clth).

Do not rely on this information

Do not rely on this information to make an investment decision. This information is a high level summary only – information, opinions and conclusions in this pack are intended as a guide only and do not constitute representations or forecasts of Spark Infrastructure or any other person or entity. You must form your own judgement in relation to information, opinions and conclusions in this pack having regard to the audited financial results for the financial period ended 30 June 2021. This pack does not set out the underlying assumptions, circumstances or risks which may affect the performance of Spark Infrastructure.

General Information only

This pack is prepared for your general information only. It is not intended to be a recommendation by Spark Infrastructure, its related bodies corporate or any of their representatives, officers, employees, agents or advisors to invest in securities. This pack does not take into account the investment objectives, financial situation or needs of any particular investor. Before making any investment decision regarding Spark Infrastructure, an investor should consider the suitability of an investment in Spark Infrastructure in view of their investment objectives, financial situation and needs and should seek independent advice.

No liability

No representation or warranty, express or implied, is made as to the fairness, accuracy or completeness of this pack, or any information, opinions and conclusions it contains. To the maximum extent permitted by law, each of Spark Infrastructure, all of its related bodies corporate and their representatives, officers, employees, agents and advisers exclude responsibility or liability for any such information, opinions and conclusions or for any action taken by you on the basis of this pack, including without limitation any liability arising from negligence on the part of any person.

Past performance is not a reliable indicator of future performance.

Spark Infrastructure does not accept any obligation to correct or update this pack or to notify you that any correction or change is required, except to the extent otherwise required by law.

All securities transactions involve risks, and investments in Spark Infrastructure are subject to investment risk, including possible delays in repayment and loss of income and capital invested.

INCOME STATEMENT

(A\$million)	6 months to 30 June 2021	6 months to 30 June 2020
Share of equity accounted profits	85.7	112.7
Interest income from associates	29.0	29.9
	114.7	142.6
Revenue - Bomen Solar Farm related	6.3	-
Other income - interest	-	0.4
Total revenue	121.0	143.0
Interest expense (including borrowing costs) ⁽¹⁾	(2.0)	(7.9)
General and administrative expenses	(8.8)	(6.9)
Project and transaction bid costs	(2.0)	(2.2)
Tax shortfall penalties	0.8	(1.3)
Operating costs – Bomen Solar Farm related	(1.6)	(0.6)
Depreciation - Bomen Solar Farm related	(2.9)	-
Unrealised (losses)/gains from derivative instruments – Bomen Solar Farm related	(10.5)	8.1
Profit before Loan Note interest	93.9	132.2
Interest expense - Loan Notes	(61.3)	(58.8)
Profit before income tax	32.6	73.4
Income tax expense	(11.0)	(23.7)
Profit after tax attributable to Securityholders	21.6	49.7

(1) HY2020 Includes interest charge of \$6.7m on historical tax payments made.

INFRASTRUCTURE FOR THE FUTURE

BALANCE SHEET

(A \$million)	30 June 2021	31 December 2020
Assets		
Cash and cash equivalents	52.6	36.9
Receivables from associates	6.8	6.8
Tax and interest refund receivable	45.0	45.0
GST receivable	-	0.7
Other current assets	2.6	3.7
Total current assets	107.0	93.1
Property, plant and equipment	170.3	172.6
Derivative instruments – Power Purchase Agreements (PPA)	33.3	43.8
Derivative instruments – Interest rate swaps	2.0	-
Investments in associates:		
- Investments accounted for using the equity method	2,239.0	2,043.9
- Loans to associates	460.6	460.6
- Loan notes to associates	237.4	237.4
Total non-current assets	3,142.6	2,958.4
Total assets	3,249.6	3,051.5
Liabilities		
Payables	5.7	5.7
GST Payable	0.2	-
Interest bearing liabilities	-	39.0
Current tax liability	4.8	39.4
Loan Note interest payable to Securityholders	61.4	61.7
Total current liabilities	72.1	145.8
Payables	0.1	0.6
Derivative instruments – Interest rate swaps	1.4	4.2
Interest bearing liabilities	99.2	-
Loan Notes attributable to Securityholders	1,111.3	1,098.0
Deferred tax liabilities	245.1	206.9
Total non-current liabilities	1,457.1	1,309.7
Total liabilities	1,529.2	1,455.5
Net assets	1,720.4	1,596.0
Equity		
Equity attributable to the Parent Entity		
- Issued capital	702.0	732.9
- Reserves	(154.9)	(247.7)
- Retained earnings	1,173.3	1,110.8
Total equity	1,720.4	1,596.0

CASHFLOW STATEMENT

(A\$million)	6 months to 30 June 2021	6 months to 30 June 2020
Cash flows from operating activities		
Distributions from associates – preferred partnership capital	34.3	34.5
Distributions from associates – other	46.4	72.0
Interest received from associates	29.0	30.3
Interest received – other	-	0.4
Interest paid – other	(1.5)	(6.8)
Other expenses	(8.1)	(7.5)
Operating cash flows - Bomen Solar Farm related	5.3	(0.5)
Project and transaction bid costs	(1.5)	(3.3)
Tax paid ⁽¹⁾	(52.4)	(74.3)
Net cash inflows from operating activities	51.6	45.0
Cash flows from Investing activities		
Purchase of property, plant and equipment	(0.1)	-
Net (purchase)/receipt of property, plant and equipment – Bomen Solar Farm	(0.8)	2.0
Equity investment in TransGrid ⁽²⁾	(15.3)	-
Net cash inflows from investing activities	(16.2)	2.0
Cash flows from financing activities		
Payment of external borrowing costs	-	(1.4)
Payment for share issue costs	(0.1)	(0.2)
Payment of lease liability	(0.4)	(0.4)
Proceeds from external borrowings	60.0	140.0
Distributions to Securityholders:		
- Loan Note interest	(61.7)	(60.3)
- Trust' distributions	(17.5)	(20.9)
Net cash outflows from financing activities	(19.7)	56.8
Net Cash Movement	15.7	103.7
Opening cash	36.9	31.4
Closing Cash	52.6	135.1

- (1) 2021 tax paid of \$52.4 million is comprised of:
- \$38.3 million is attributable to the 31 December 2020 income tax year.
 - \$14.1 million relates to tax instalments in respect of 31 December 2021 income tax year.
- 2020 tax paid of \$74.3 million is comprised of:
- \$34.4 million relating to a number of historical income tax years (2015-2018) regarding the ongoing tax dispute with the Australian Tax Office (ATO).
 - \$33.7 million relating to the 31 December 2019 income tax year.
 - \$6.2 million relating to the 31 December 2020 income tax year, and with respect to the SIH No.2 Tax Consolidated Group.

(2) Relates to equity investment in TransGrid to support capital expenditure requirements (Project Energy Connect).

VICTORIA POWER NETWORKS

FINANCIAL RESULTS

INCOME STATEMENT

VICTORIA POWER NETWORKS (100% RESULTS)

(A\$million)	6 months to 30 June 2021	6 months to 30 June 2020
Distribution revenue ⁽¹⁾	422.4	490.4
Transmission revenue	164.0	170.5
Transmission charges	(164.0)	(170.5)
	422.4	490.4
Metering revenue	39.6	40.4
Semi regulated and unregulated revenue	193.8	153.9
Total revenue	655.8	684.7
Operating expenses	(278.5)	(252.5)
EBITDA	377.3	432.2
Depreciation and amortisation	(164.8)	(161.0)
Senior debt ⁽²⁾	(80.1)	(85.9)
Subordinated debt	(50.6)	(50.9)
Interest income	0.1	0.2
Profit before tax	81.9	134.7
Tax expense	(26.2)	(42.0)
Profit after tax	55.8	92.7

(1) Variances from other Spark Infrastructure reporting documents relate to the following:

- Adjustments are made to distribution revenues to defer/accrue for amounts in excess of/under the regulated revenue cap to reflect that these amounts will be returned to/recovered from electricity consumers in future periods via adjustments to tariffs. For the period ended 30 June 2021 an amount of \$11.9m was accrued (2020: \$4.3m accrued).

(2) Includes non-cash credit valuation hedge adjustment

BALANCE SHEET

VICTORIA POWER NETWORKS (100% RESULTS)

(A'\$million)	30 June 2021	31 December 2020
Assets		
Cash and deposits	167.6	126.7
Trade and other receivables	175.5	169.2
Inventories	58.1	56.5
Derivative financial instruments	38.5	35.1
Other assets	44.1	58.7
Income tax refund receivable	26.0	26.8
Total current assets	509.8	472.9
Derivative financial instruments	192.2	159.0
Property, plant and equipment	7,531.5	7,364.7
Right of Use Asset	59.0	62.8
Intangible assets	811.7	816.0
Other	27.7	0.6
Total non-current assets	8,622.1	8,403.1
Total assets	9,131.9	8,876.0
Liabilities		
Trade and other payables	442.1	409.8
Borrowings ⁽¹⁾	1,342.7	1,407.5
Provisions	117.0	107.7
Lease Liability - current	6.2	6.0
Derivative financial instruments	2.9	11.4
Total current liabilities	1,910.9	1,942.4
Borrowings ⁽¹⁾	4,914.0	4,679.1
Provisions	4.8	12.8
Deferred tax liabilities	611.3	536.4
Derivative financial instruments	188.8	267.7
Lease Liability	71.1	74.7
Other	3.7	21.9
Total non-current liabilities	5,793.7	5,592.6
Total liabilities	7,704.6	7,535.0
Net assets	1,427.3	1,341.0
Equity		
Share capital	1,639.2	1,639.2
Reserves	(1,951.3)	(2,038.2)
Retained profit	1,739.4	1,740.0
Total equity	1,427.3	1,341.0

(1) Includes external debt, subordinated debt and accounting adjustments e.g. capitalised debt costs. Refer to Spark HY 2021 Investor Presentation for gross and net debt balances.

CASHFLOW STATEMENT

VICTORIA POWER NETWORKS (100% RESULTS)

(A'\$million)	6 months to 30 June 2021	6 months to 30 June 2020
Cash flows from operating activities		
Receipts from customers	887.2	900.5
(Payment to)/Receipts from customers for capital works	1.6	(2.8)
Cash payments to suppliers and employees	(468.6)	(482.5)
Interest received	-	0.2
Income tax paid	(2.7)	(31.0)
Interest and other costs of senior debt	(83.1)	(81.9)
Net payment/(receipt) of trust monies	(0.4)	-
Net cash inflows from operating activities	334.0	302.5
Cash flows from Investing activities		
Purchase of property, plant and equipment	(324.9)	(311.6)
Dividends paid to non-controlling interests	(1.4)	(1.5)
Proceeds from sale of property, plant and equipment	2.5	1.2
Net cash outflows from investing activities	(323.8)	(311.9)
Cash flows from financing activities		
Proceeds from borrowings - external	993.6	600.0
Repayment of borrowings - external	(820.0)	(418.1)
Interest payments on subordinated debt	(50.6)	(50.9)
Dividends paid	(89.4)	(109.1)
Lease repayments	(2.9)	(2.6)
Net cash outflows from financing activities	30.7	19.3
Net cash movement	40.9	9.9
Opening cash	126.7	61.6
Closing cash	167.6	71.5

(1) Purchase of property, plant and equipment net of customer contributions

SA POWER NETWORKS

FINANCIAL RESULTS

INCOME STATEMENT

SA POWER NETWORKS (100% RESULTS)

(A'\$million)	6 months to 30 June 2021	6 months to 30 June 2020
Distribution revenue ⁽¹⁾	410.4	430.0
Transmission revenue	(131.0)	(122.7)
Transmission charges	131.0	122.7
	410.4	430.0
Semi regulated and unregulated revenue	155.4	197.1
Total revenue	565.8	627.0
Operating expenses	(236.5)	(265.4)
EBITDA	329.3	361.6
Depreciation and amortisation	(161.9)	(155.1)
Interest on senior debt and other finance costs ⁽²⁾	(63.8)	(72.4)
Interest on subordinated debt	(35.9)	(36.1)
Interest income	0.1	0.2
Profit before tax	67.8	98.2
Income tax expense	(2.1)	(2.2)
Profit after tax	65.7	95.9

1. Adjustments are made to distribution revenues to defer/accrue for amounts in excess of/under the regulated revenue cap to reflect that these amounts will be returned to/recovered from electricity consumers in future periods via adjustments to tariffs. For the period ended 30 June 2021 an amount of \$2.2m was deferred (2020: \$1.0m accrued).

2. Includes non-cash credit valuation hedge adjustment

BALANCE SHEET

SA POWER NETWORKS (100% RESULTS)

(A'\$million)	30 June 2021	31 December 2020
Assets		
Cash and deposits	116.2	75.3
Trade and other receivables	219.5	193.1
Other financial assets	14.8	-
Inventories	19.2	18.0
Other	11.6	11.6
Total current assets	381.3	298.0
Property, plant & equipments	5,285.7	5,279.7
Intangible assets	903.6	906.1
Inventories	9.7	9.9
Other	583.4	604.6
Total non-current assets	6,782.4	6,800.3
Total assets	7,163.7	7,098.3
Liabilities		
Trade and other payables	271.6	240.3
Borrowings ⁽¹⁾	67.6	0.0
Other	158.0	135.8
Total current liabilities	497.2	376.1
Borrowings ⁽¹⁾	4,102.4	4,196.8
Other	226.2	394.0
Total non-current liabilities	4,328.6	4,590.8
Total liabilities	4,825.8	4,966.9
Net assets	2,337.9	2,131.4
Equity		
Partners capital accounts	623.3	623.3
Partners current accounts	1,927.4	1,826.7
Reserves	(212.8)	(318.6)
Total equity	2,337.9	2,131.4

(1) Includes external debt, subordinated debt and accounting adjustments e.g. capitalised debt costs. Refer to Spark HY 2021 Investor Presentation for gross and net debt balances

CASHFLOW STATEMENT

SA POWER NETWORKS (100% RESULTS)

(A'\$million)	6 months to 30 June 2021	6 months to 30 June 2020
Cash flows from operating activities		
Receipts from customers	754.4	844.6
Cash payments to suppliers and employees	(386.6)	(470.2)
Interest and other costs of senior debt	(64.0)	(66.5)
Interest received	0.2	0.2
Income tax paid	(4.0)	(4.0)
Net cash inflows from operating activities	300.0	304.1
Cash flows from investing activities		
Purchase of property, plant and equipment ⁽¹⁾	(188.5)	(200.5)
Proceeds from sale of property, plant and equipment	1.6	1.3
Net cash outflows from investing activities	(186.9)	(199.2)
Cash flows from financing activities		
Proceeds from borrowings - external	-	60.0
Payment for debt issue costs	(0.4)	(0.5)
Repayment of lease liabilities	(1.8)	(1.9)
Interest and other payments on subordinated debt (CKI / PAH)	(35.7)	(35.9)
Preferred partnership distribution (Spark Infrastructure)	(34.3)	(34.5)
Ordinary distributions (All partners)	-	(25.0)
Net cash outflows from financing activities	(72.2)	(38.0)
Net cash movement	40.9	67.0
Opening cash	75.3	29.7
Closing cash	116.2	96.7

(1) Purchase of property, plant and equipment includes gross customer contributions

TRANSGRID

FINANCIAL RESULTS

INCOME STATEMENT

TRANSGRID (100% RESULTS)

(A\$million)	6 months to 30 June 2021	6 months to 30 June 2020
Transmission revenue ⁽¹⁾	374.0	367.8
Unregulated revenue	71.2	63.0
Other revenue	0.2	-
Total revenue	445.4	430.8
Operating expenses	(123.5)	(117.9)
EBITDA	321.9	313.0
Depreciation and amortisation	(173.9)	(168.2)
Interest expense	(106.3)	(104.4)
Interest on shareholder loan	(28.0)	(33.0)
Interest income	0.2	0.8
Other financing charges	(7.7)	(4.5)
Profit before tax	6.2	3.7
Income tax expense	-	-
Profit after tax	6.2	3.7

1) Variances from other Spark Infrastructure reporting documents relate to the following:

- Adjustments are made to transmission revenues to defer/accrue for amounts in excess of/under the regulated revenue cap to reflect that these amounts will be returned to/recovered from electricity consumers in future periods via adjustments to tariffs. For the period ended 30 June 2021 an amount of \$32.8m was accrued (2020: \$13.7m accrued).

BALANCE SHEET

TRANSGRID (100% RESULTS)

(A'\$million)	30 June 2021	31 December 2020 ⁽²⁾
Assets		
Cash and cash equivalents	177.1	143.7
Derivative assets	16.5	12.5
Trade and other receivables	107.2	107.3
Inventories	22.7	23.8
Other current assets	15.2	12.7
Total current assets	338.7	300.0
Derivative assets	114.5	101.1
Property, plant and equipment	8,396.9	8,013.1
Intangibles	2,611.9	2,606.8
Other non-current assets	111.5	109.8
Total non-current assets	11,234.8	10,830.8
Total assets	11,573.5	11,130.8
Liabilities		
Trade and other payables	268.9	123.8
Borrowings ⁽¹⁾	635.0	286.9
Derivative liabilities	108.0	112.5
Provisions	77.9	69.4
Other current liabilities	60.5	53.2
Total current liabilities	1,150.3	645.8
Borrowings ⁽¹⁾	5,802.9	6,019.3
Shareholder loans	1,581.9	1,581.9
Derivative liabilities	163.9	259.2
Provisions	40.4	75.5
Other non-current liabilities	49.7	51.7
Total non-current liabilities	7,638.8	7,987.6
Total liabilities	8,789.1	8,633.4
Net assets	2,784.4	2,497.4
Equity		
Units on issue	3,092.9	2,973.2
Reserves	(246.6)	(407.2)
Retained earnings	(61.9)	(68.6)
Total equity	2,784.4	2,497.4

(1) Includes external debt and accounting adjustments e.g. capitalised debt costs. Refer to Spark HY 2021 Investor Presentation for gross and net debt balances

(2) Derivative assets and liabilities at 31 December 2020 have been restated by the CCIRS Derivative Assets for comparative purposes to 30 June 2021.

CASHFLOW STATEMENT

TRANSGRID (100% RESULTS)

(A\$million)	6 months to 30 June 2021	6 months to 30 June 2020
Cash flows from operating activities		
Receipts from customers	490.6	460.5
Payments to suppliers and employees	(156.8)	(138.5)
Interest paid for shareholder loans	(28.4)	(35.5)
Finance costs paid	(110.6)	(107.0)
Rental income from investment property	3.8	0.8
Interest received	0.2	0.9
Net cash inflows from operating activities	198.8	181.2
Cash flows from investing activities		
Acquisition of property, plant and equipment and intangibles	(423.0)	(273.4)
Proceeds from sale of property, plant and equipment	1.9	0.9
Net cash outflows from investing activities	(421.1)	(272.5)
Cash flows from financing activities		
Proceeds from borrowings	600.2	131.8
Repayment of borrowings	(420.0)	(23.4)
Capital injections from Securityholders	102.0	-
Debt establishment costs	(8.1)	(0.7)
Repayment of lease liability	(1.4)	(0.2)
Distribution to securityholders	(17.0)	(42.0)
Net cash outflows from financing activities	255.7	65.5
Net cash movement	33.4	(25.8)
Opening cash	143.7	144.8
Closing cash	177.1	119.0

DISCLAIMER AND SECURITIES WARNING

Investment company financial reporting - The financial reporting is based on TransGrid's special purpose financial statements for the half year ended 31 December 2020 and year ended 30 June 2021. Results have been adjusted by Spark Infrastructure to reflect the 6 month period to 30 June 2021.

No offer or invitation. This presentation is not an offer or invitation for subscription or purchase of or a recommendation to purchase securities or any financial product.

No financial product advice. This presentation contains general information only and does not take into account the investment objectives, financial situation or particular needs of individual investors. It is not financial product advice. Investors should obtain their own independent advice from a qualified financial advisor having regard to their objectives, financial situation and needs.

Summary information. The information in this presentation does not purport to be complete. It should be read in conjunction with Spark Infrastructure's other periodic and continuous disclosure announcements lodged with the Australian Securities Exchange (ASX), which are available at www.asx.com.au.

U.S. ownership restrictions. This presentation does not constitute an offer to sell, or a solicitation of an offer to buy, securities in the United States or to any "U.S. person". The Stapled Securities have not been registered under the U.S. Securities Act or the securities laws of any state of the United States. In addition, none of the Spark Infrastructure entities have been registered under the U.S. Investment Company Act of 1940, as amended, in reliance on the exemption provided by Section 3(c)(7) thereof. Accordingly, the Stapled Securities cannot be held at any time by, or for the account or benefit of, any U.S. person who is not both a QIB and a QP. Any U.S. person who is not both a QIB and a QP (or any investor who holds Stapled Securities for the account or benefit of any US person who is not both a QIB and a QP) is an "Excluded US Person" (A "U.S. person", a QIB or "Qualified Institutional Buyer" and a QP or "Qualified Purchaser" have the meanings given under US law). Spark Infrastructure may require an investor to complete a statutory declaration as to whether they (or any person on whose account or benefit it holds Stapled Securities) are an Excluded US Person. Spark Infrastructure may treat any investor who does not comply with such a request as an Excluded US Person. Spark Infrastructure has the right to: (i) refuse to register a transfer of Stapled Securities to any Excluded U.S. Person; or (ii) require any Excluded US Person to dispose of their Stapled Securities; or (iii) if the Excluded US Person does not do so within 30 business days, require the Stapled Securities be sold by a nominee appointed by Spark Infrastructure. To monitor compliance with these foreign ownership restrictions, the ASX's settlement facility operator (ASX Settlement Pty Limited) has classified the Stapled Securities as Foreign Ownership Restricted financial products and put in place certain additional monitoring procedures.

Foreign jurisdictions. No action has been taken to register or qualify the Stapled Securities in any jurisdiction outside Australia. It is the responsibility of any investor to ensure compliance with the laws of any country (outside Australia) relevant to their securityholding in Spark Infrastructure.

No liability. No representation or warranty, express or implied, is made in relation to the fairness, accuracy or completeness of the information, opinions and conclusions expressed in the course of this presentation. To the maximum extent permitted by law, each of Spark Infrastructure, all of its related bodies corporate and their representatives, officers, employees, agents and advisors do not accept any responsibility or liability (including without limitation any liability arising from negligence on the part of any person) for any direct, indirect or consequential loss or damage suffered by any person, as a result of or in connection with this presentation or any action taken by you on the basis of the information, opinions or conclusions expressed in the course of this presentation. You must make your own independent assessment of the information and in respect of any action taken on the basis of the information and seek your own independent professional advice where appropriate.

Forward looking statements. No representation or warranty is given as to the accuracy, completeness, likelihood of achievement or reasonableness of any forecasts, projections, prospects, returns, forward-looking statements or statements in relation to future matters contained in the information provided in this presentation. Such forecasts, projections, prospects, returns and statements are by their nature subject to significant unknown risks, uncertainties and contingencies, many of which are outside the control of Spark Infrastructure, that may cause actual results to differ materially from those expressed or implied in such statements. There can be no assurance that actual outcomes will not differ materially from these statements.

Rounding. Amounts have been rounded to one decimal place. As a result, totals as correctly stated in tables may differ from individual calculations.

CORPORATE CONTACT DETAILS

REGISTERED OFFICE

Spark Infrastructure

Level 29, 225 George Street

Sydney NSW 2000

T: +61 2 9086 3600

F: +61 2 9086 3666

E: info@sparkinfrastructure.com

W: sparkinfrastructure.com

Managing Director

Rick Francis

Chief Financial Officer

Gerard Dover

Company Secretary

Jenny Faulkner

Investor Relations

Neil Donaldson

SECURITY REGISTRY

Boardroom Pty Limited

ABN 14 003 209 836

GPO Box 3993

Sydney NSW 2001

Tel: 1300 737 760 (within Australia)

Tel: +61 2 9290 9600 (outside Australia)

Fax: +61 2 9279 0664

www.boardroomlimited.com.au

enquiries@boardroomlimited.com.au