



HIGHLY ACTIVE WEST AUSTRALIAN MINERAL EXPLORER  
FOCUSED ON DISCOVERY

---

**NEW WORLD METALS CONFERENCE - SEPTEMBER 2021**

# Disclaimer



*This presentation includes forward-looking statements. When used in this document, the words such as “could”, “plan”, “estimate”, “expect”, “intend”, “may”, “potential”, “should”, and similar expressions are forward-looking statements. Although Dreadnought Resources Limited (“Dreadnought”) believes that the expectation reflected in these forward-looking statements are reasonable, such statement involved risks and uncertainties and no assurance can be given that actual results will be consistent with these forward-looking statements.*

*This presentation has been prepared by Dreadnought for the purpose of providing an overview of its current prospects and growth strategy to recipients. This presentation and its contents are provided to recipients on the basis that It may not be reproduced or disclosed in whole or in part to any other person, without the written consent of Dreadnought.*

*This presentation is provided on the basis that neither Dreadnought nor its respective officers, shareholders, related bodies corporate, partners, affiliates, employees, representatives and advisers, make any representation or warrant (express or implied) as to the accuracy, reliability, relevance or completeness of the material contained in this presentation and nothing contained in the presentation is, or may be relied upon, as a promise, representation or warrant, whether as to the past or the future. Dreadnought hereby excludes all warranties that can be excluded by law.*

*All persons should consider seeking appropriate professional advice in reviewing the presentation and all other information with respect to Dreadnought and evaluating the business, financial performance and operation of Dreadnought. Neither the provision of the presentation nor any information contained in the presentation or subsequently communicated to any person in connection with the presentation is, or should be taken as, constituting the giving of investment advice to any person.*

## Competent Person's Statement

*The information in this announcement that relates to geology and exploration results and planning was compiled by Mr. Dean Tuck, who is a Member of the AIG, Managing Director, and shareholder of the Company. Mr. Tuck has sufficient experience which is relevant to the style of mineralisation and type of deposit under consideration and to the activity being undertaken to qualify as a Competent Person as defined in the 2012 Edition of the 'Australasian Code for Reporting of Exploration Results, Mineral Resources and Ore Reserves'. Mr. Tuck consents to the inclusion in the report of the matters based on the information in the form and context in which it appears.*

*The Company confirms that it is not aware of any new information or data that materially affects the information in the original reports, and that the forma and context in which the Competent Person's findings are presented have not been materially modified from the original reports. (referencing historic and new company announcements).*

## Currency

*All amounts shown are in Australian dollars unless otherwise stated.*

## Illaara Gold-VMS-Iron Ore Project

- 24 June 2019 75 km Long Illaara Greenstone Belt Acquired from Newmont
- 23 September 2019 Illaara Gold Project Update
- 6 December 2019 Consolidation of 75km Long Illaara Greenstone Belt
- 19 March 2020 RC Drilling Hits High Grades at Metzke's Find
- 13 July 2020 RC Drilling Hits High Grade Gold at Metzke's Find
- 14 July 2020 Three New Gold Targets Along Strike And Adjacent to Metzke's Find
- 17 July 2020 Remaining Metzke's Find Assays
- 22 July 2020 High-grade Iron Ore Opportunity - Illaara Greenstone Belt
- 25 September 2020 Further High-Grade Gold from Metzke's Find
- 8 October 2020 Further High-Grade Gold from Metzke's Find
- 30 November 2020 Exploration Update Illaara Gold-VMS-Iron Ore Project
- 13 October 2020 100g/t Au from Maiden Drill Program at Longmore's Find
- 12 January 2021 Longmore's Find Assay Results – Illaara Gold-VMS-Iron Ore Project
- 10 March 2021 Illaara Update and Planned Lawrence's Corridor Drilling
- 27 April 2021 Illaara Update and Regional Target Generation
- 31 May 2021 Drilling Results – Illaara Au-Cu-Iron Ore Project

## Kimberley Ni-Cu-Au Project

- 6 June 2019 Ground EM Survey Lights Up Strong Conductor at the Texas Ni-Cu-PGE Target
- 2 December 2019 Assays and EM Surveys Confirm Massive Sulphide System at Chianti-Rufina
- 23 December 2019 Grants Cu-Au Assays and Coincident Magnetic/Gravity Targets
- 24 August 2020 High Priority Copper Gold Targets at Fuso and Paul's Find
- 25 August 2021 RC Results from Orion, Grant's Find & Fuso Indicate Large Cu-u-Ag-Co System

## Mangaroon Ni-Cu-PGE, REE & Au Project

- 25 November 2020 Mangaroon Ni-Cu-PGE & Au Project
- 07 April 2021 Option/JV Agreement Signed with Global Base Metal Miner
- 19 July 2021 High Grade REE Ironstones Outcropping at Mangaroon
- 1 September 2021 Encouraging Results for Rare Earths at Yin

# Company Snapshot



Capital Structure	
ASX Code	DRE
Share Price (06/09/2021)	\$0.038
Shares on Issue	2,597.4M
Market Cap (undiluted)	\$98.7M
Market Cap (diluted)	\$101.8M
Cash (30/06/2021)	\$2.6M
Debt	Nil
Unlisted Options (various strike prices)	82.5M
Top 20 Shareholders	34%
Board and Management	
Paul Chapman – Non-Executive Chairman	Board and Management Cash Investment ~\$1,300,000
Dean Tuck – Managing Director	
Ian Gordon – Non-Executive Director	
Paul Payne – Non-Executive Director	
Jessamyn Lyons – Company Secretary	Board and Management Shareholding ~17%
Matt Crowe – Exploration Manager	
Frank Murphy – Operations Manager	
Nick Chapman / Luke Blais – Senior Geologist	



## Kimberley Ni-Cu-Au Projects (100%, E04/2315 80%)

- 2,660km<sup>2</sup> land holding in the West Kimberley, 2<sup>nd</sup> largest land owner behind IGO and ahead of Chalice
- Unexplored since 1978 with known outcropping mineralisation
  - Texas Ni-Cu-PGE: Coincident EM and magnetic target in the Ruins Dolerite
  - Fuso and Paul's Find Cu-Au: Coincident magnetic and gravity target
  - Chianti VMS: 7 EM plates with outcropping mineralisation

## Mangaroon Ni-Cu-PGE (Option with FQM), REE & Au Project (100%)

- ~4,500km<sup>2</sup> land holding in the Gascoyne Province
- Vastly unexplored with historical work led by local pastoralists
- Recent option/JV agreement over outcropping fertile Ni-Cu-PGE system
- Outcropping rare earth ironstones, nickel-copper-PGE sulphides and gold

## Illaara Gold-VMS-LCT-Iron Ore Project (100%)

- Consolidated 880km<sup>2</sup> landholding covering 75km strike of the Illaara greenstone belt initially acquired from Newmont
- High grade gold, outcropping fertile LCT pegmatites, Iron Ore and base metal gossans
- Metzke's Find maiden JORC resource underway:
  - MZRC016: 3m @ 21.0g/t Au from 85m
  - MZRC017: 7m @ 7.5g/t Au from 51m
  - MZRC019: 2m @ 39.2g/t Au from 45m
  - MZRC021: 3m @ 13.8g/t Au from 108m
  - MZRC022: 2m @ 20.7g/t Au from 19m
  - MZRC030: 2m @ 10.8g/t Au from 102m

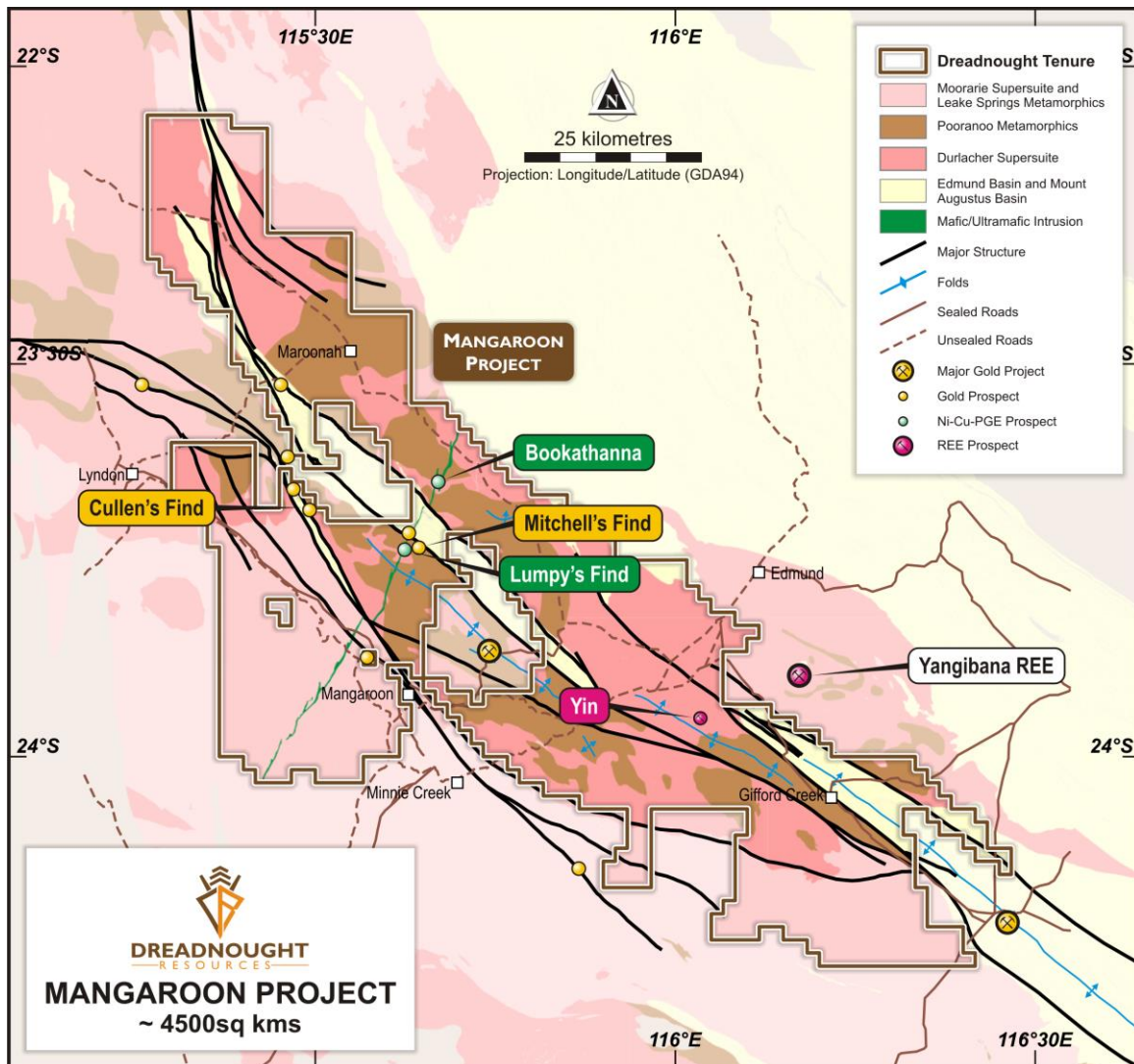


# Mangaroon Ni-Cu-PGE, REE & Au Project

---



# Mangaroon Project



## ➤ Rare Earths: Yin Camp – 100% Owned

- Outcropping high-grade Rare-Earth ironstones – similar to Yangibana
- High NdPr ratio – high value product for permanent magnets
- Straight forward exploration and metallurgical methodology

## ➤ Ni-Cu-PGE: The Money Intrusion – Option/JV with FQM

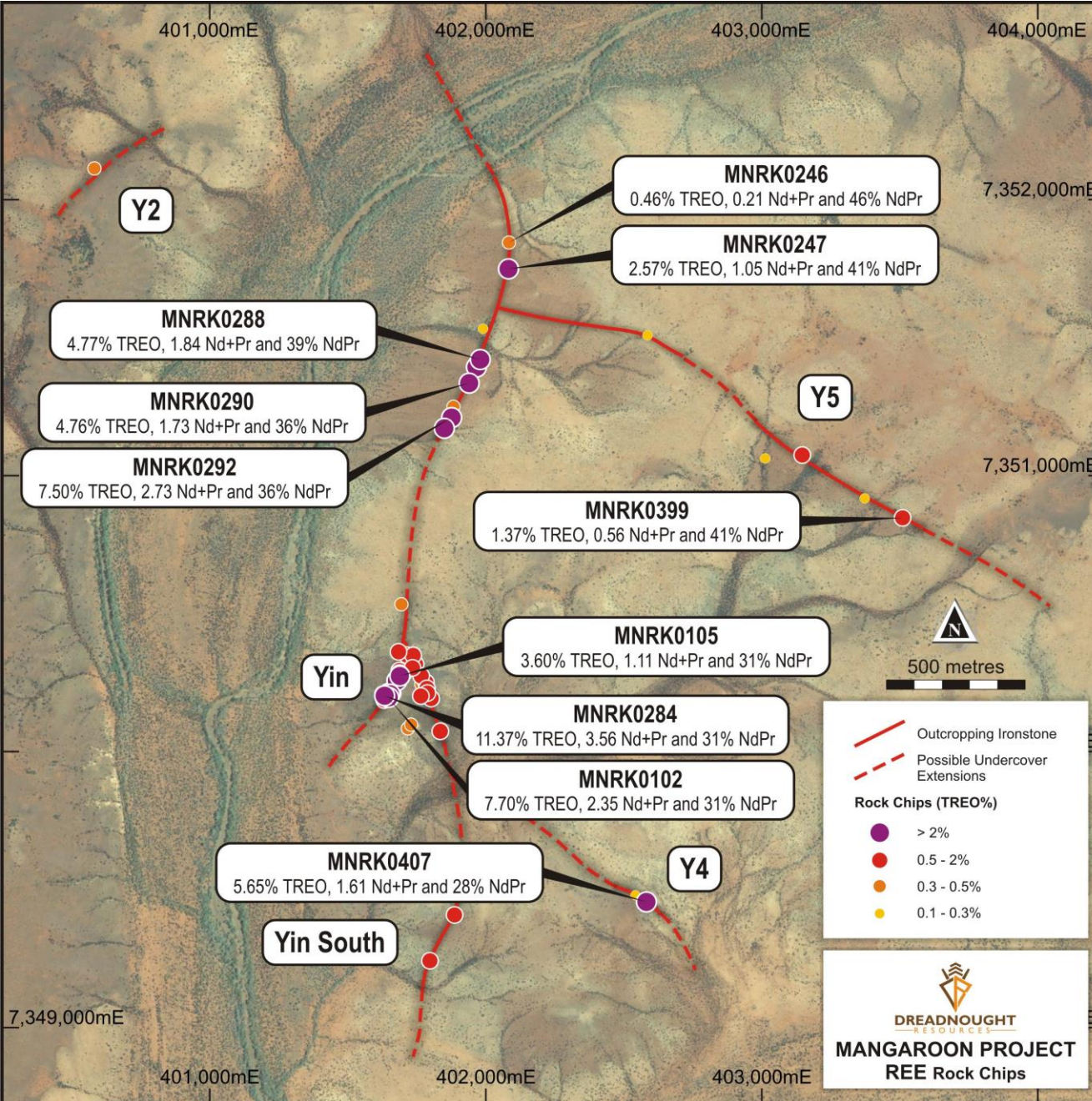
- 50km long, outcropping mafic/ultramafic intrusion with high tenor blebby Cu-Ni-PGE bearing sulphides
- FQM entered into an Option Agreement over 5 tenements covering the Money Intrusion
- Option provides FQM the right, following the completion of an exploration program funded by FQM, to earn 51% interest in the tenements by spending \$15M and a further 19% interest by sole funding all exploration up until a Decision to Mine.
- Dreadnought manages exploration during the option period and retains rights to any gold discoveries.

## ➤ Gold: Minga Bar and Edmund Faults – 100% Owned

- Known outcropping gold mineralisation along two crustal scale structures



# Yin REE Ironstones



## ➤ April – May 2021: Discovery

- Next door to Yangibana – keen geologists
- Reprocessed wide spaced 1990s government magnetic and radiometric data
- Identified coincident thorium radiometric and magnetic anomaly over what looked like an outcropping ironstone
- Yin Discovered

## ➤ June – August 2021: Evaluation

- Reconnaissance mapping and sampling of additional anomalies
- Orientation ground magnetics
- Orientation surface geochemistry
- Early metallurgical flotation test work
- Early mineralogical work



# Yin REE Ironstones

## ✓ Scale

- Six REE ironstones identified to date with over an area of ~10kms x 5kms

## ✓ Grade

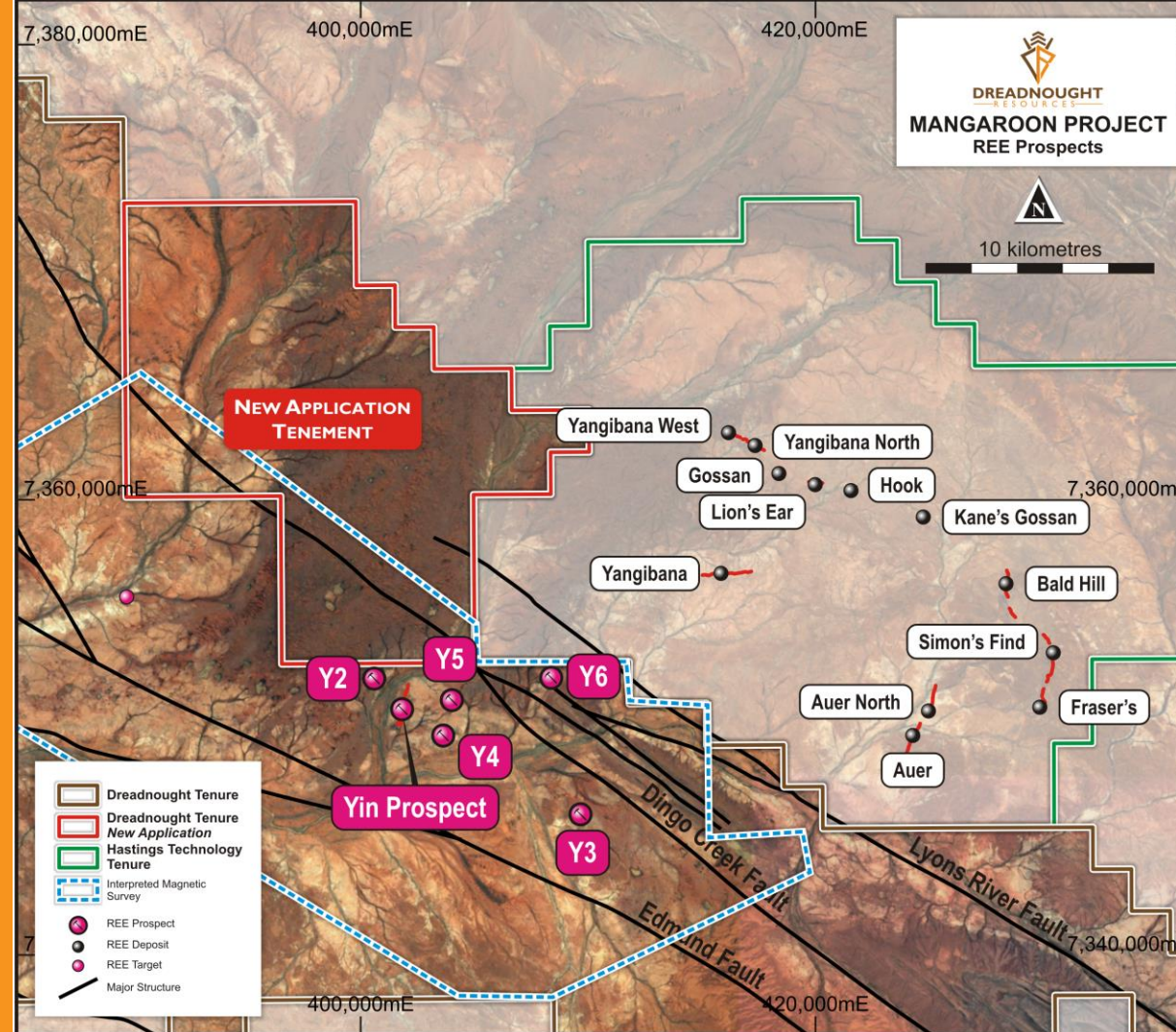
- High grade rock chips with high NdPr ratios – high value concentrate

## ✓ Mineralogy

- Monazite – globally significant REE mineral with abundant processing capacity with three plants to be built in WA

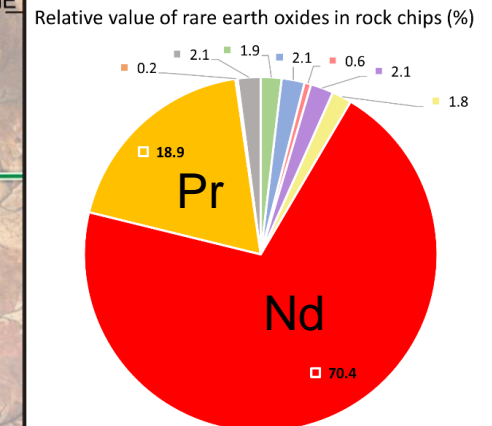
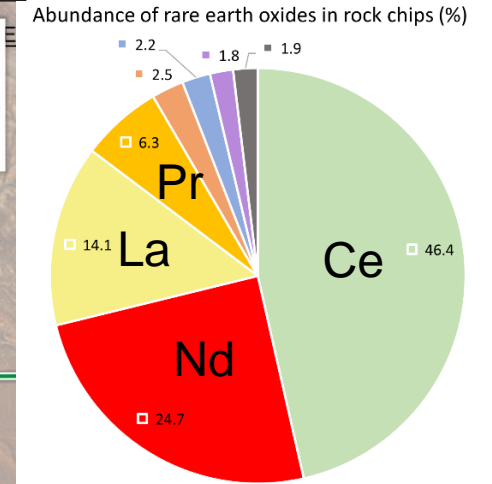
## ✓ Metallurgy

- Standard flotation sheet able to produce high grade concentrate
- 12.3% Nd<sub>2</sub>O<sub>3</sub> / 40% TREO with 92.8% process recovery

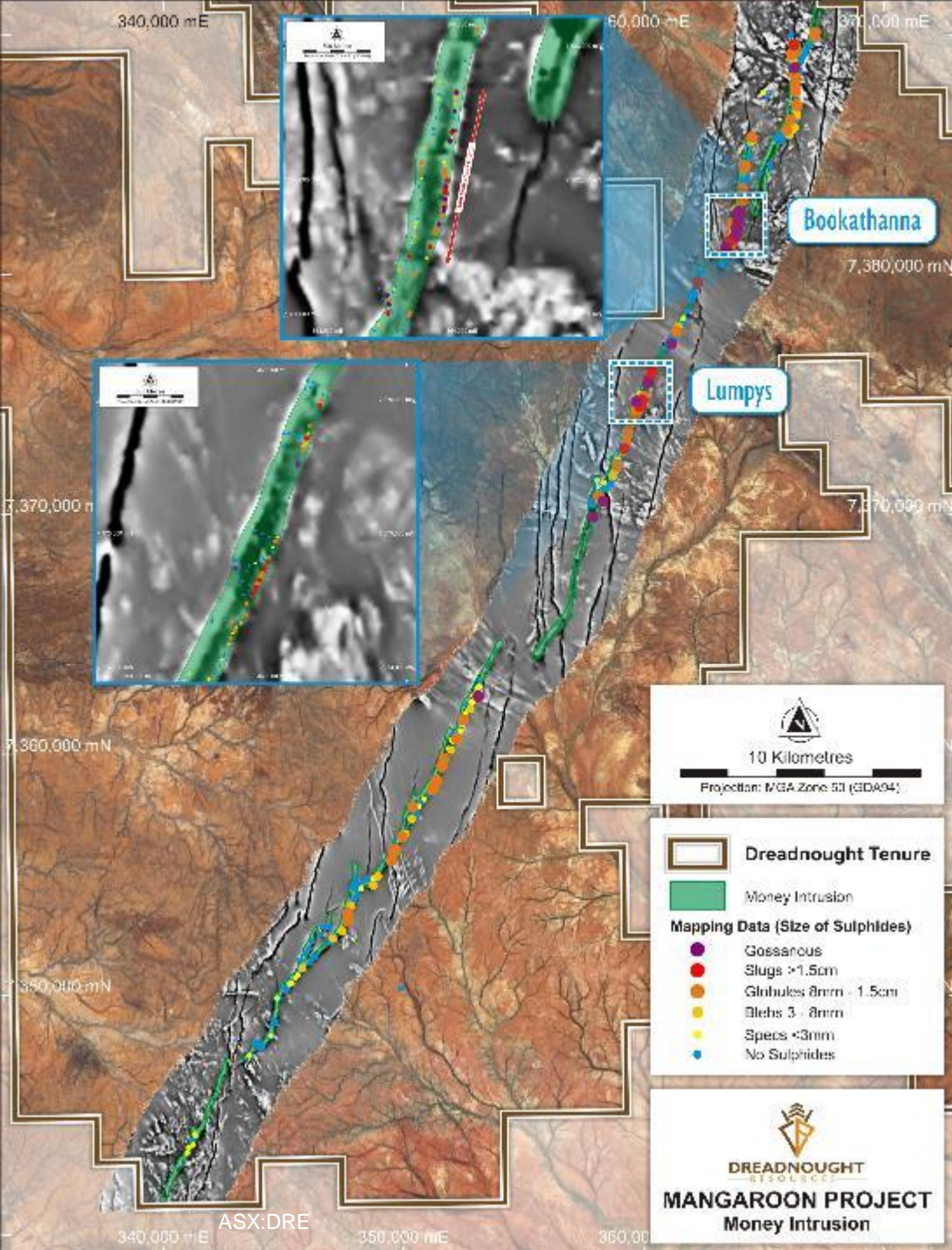


## Next Steps: How big is it and how many more are there?

- September 2021: Airborne magnetic and radiometric survey
- October 2021: Environmental and heritage surveys
- March 2022: Discovery and resource focused drilling
- Mid-Late 2022: Deliver maiden JORC resource







# Mangaroon Ni-Cu-PGE Option/JV Agreement with FQM

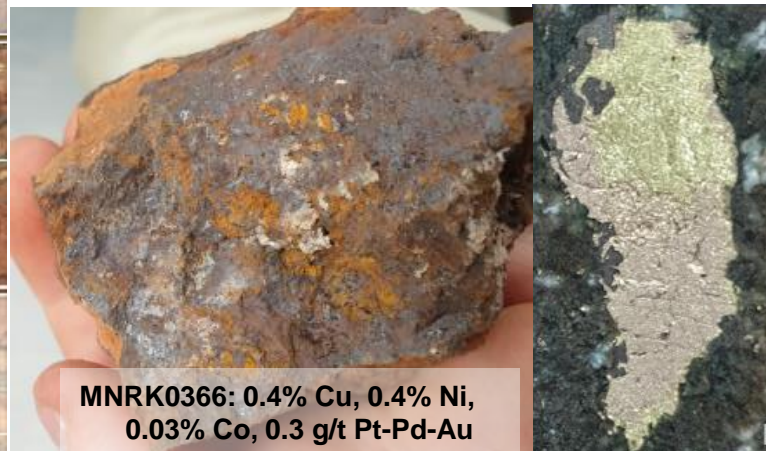
- The Money Intrusion
  - 50km long, outcropping mafic / ultramafic intrusion with high tenor blebby Cu-Ni-PGE bearing sulphides
  - 1km long outcropping gossanous Ni-Cu-PGE horizon at Bookathanna

## Next Steps: Is there a massive sulphide accumulation?

September – November 2021: Ground EM surveys

October / November 2021: Environmental and heritage surveys

March 2022: Discovery focused drilling



Coarse grained mafic intrusion showing high tenor three phase disseminated and blebby sulphides comprised of chalcopyrite, pentlandite and pyrrhotite



An aerial photograph of a mining site in a wooded area. A yellow excavator is visible in the center, surrounded by various pieces of equipment and debris. The ground is disturbed, showing signs of excavation. The background is filled with trees and vegetation.

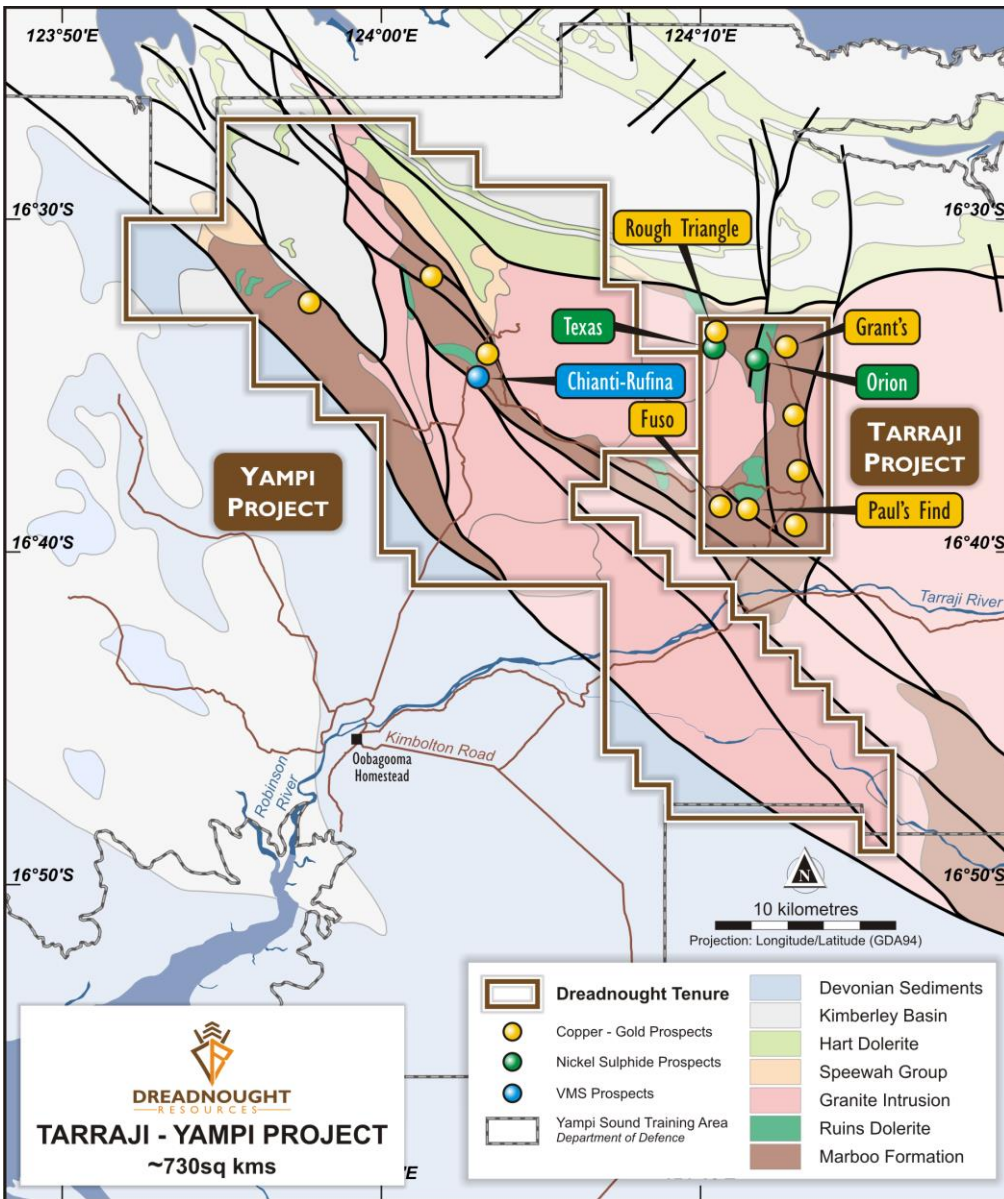
# Tarraji-Yampi Ni-Cu-PGE & Gold Project

---



# Tarraji-Yampi

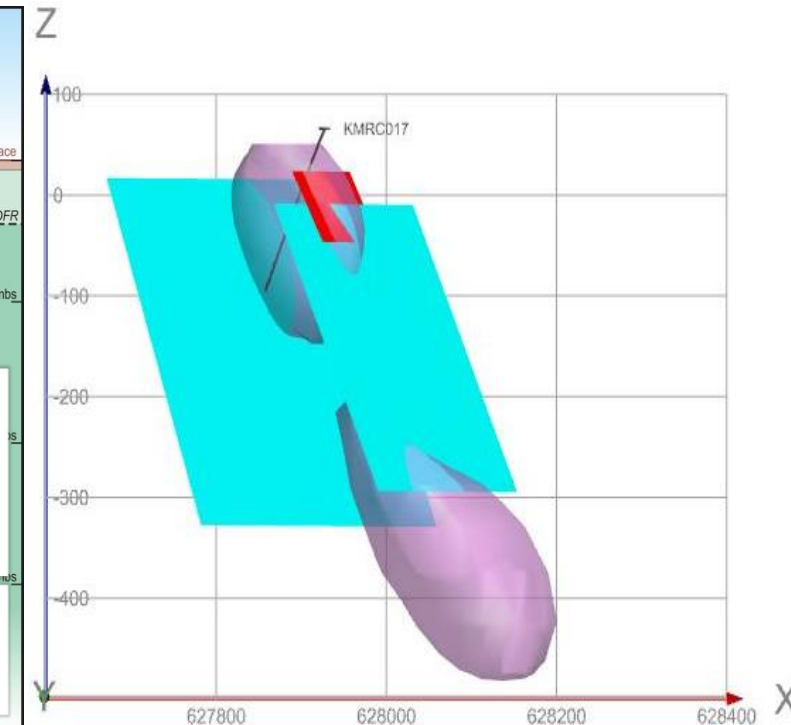
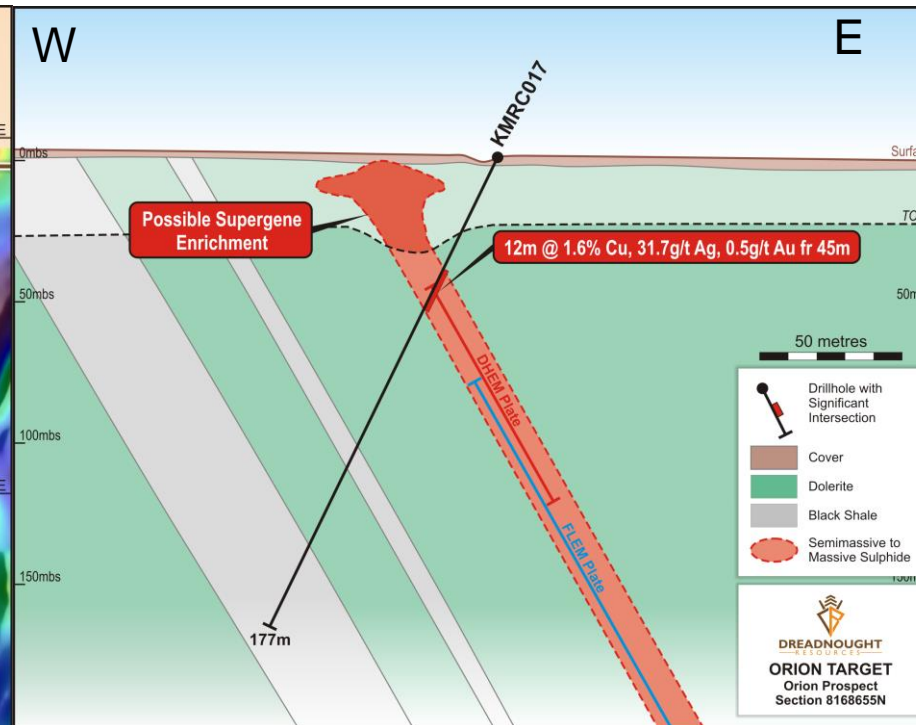
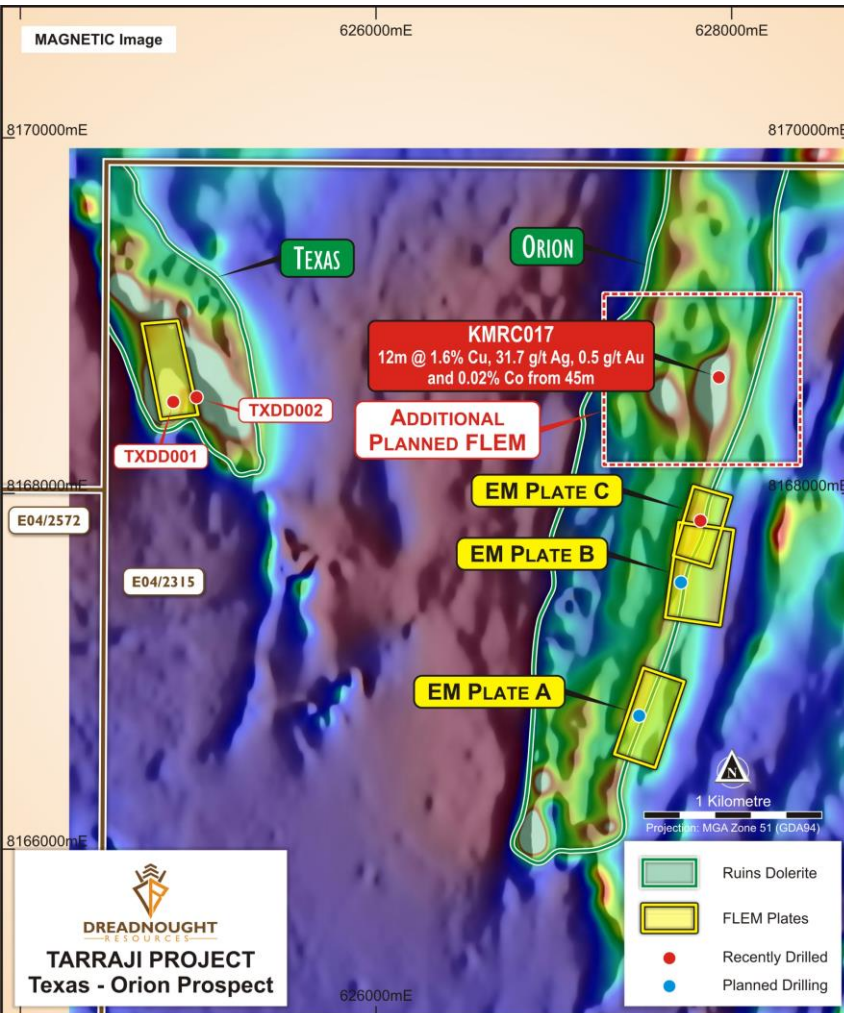
- Located just 80kms from the port of Derby and entirely within the Yampi Sound Training Area – unexplored since 1978
- Abundant outcropping Cu-Au-Ag-Bi-Sb-Co mineralisation – vectors to mineralisation undercover
  - Grant's Find – Discovered 1906
  - Rough Triangle – Discovered 1958 (but was never assayed)
- Hunting the elephants under shallow cover
  - Orion – First hole drilled 2021, 3m of cover into 12m of massive sulphide from 45m depth.
  - Fuso – First program confirmed high grade mineralisation, but the magnetic anomalies remain to be tested – stronger than Orion





# Orion Cu-Ag-Au Target

12m of massive sulphide from the first hole drilled at Orion – *clipped the edge of the plate*



## Next Steps: How big is Orion and how many friends does it have?

- |                 |  |
|-----------------|--|
| September 2021: | RC drilling testing the strike and depth extents of the coincident magnetic and EM anomaly |
| September 2021: | RC drill testing supergene mineralisation  |
| October 2021:   | DHEM surveys on deep drilling  |
| October 2021:   | Test additional magnetic and EM anomalies at Orion   |
| October 2021:   | Initial diamond drilling   |



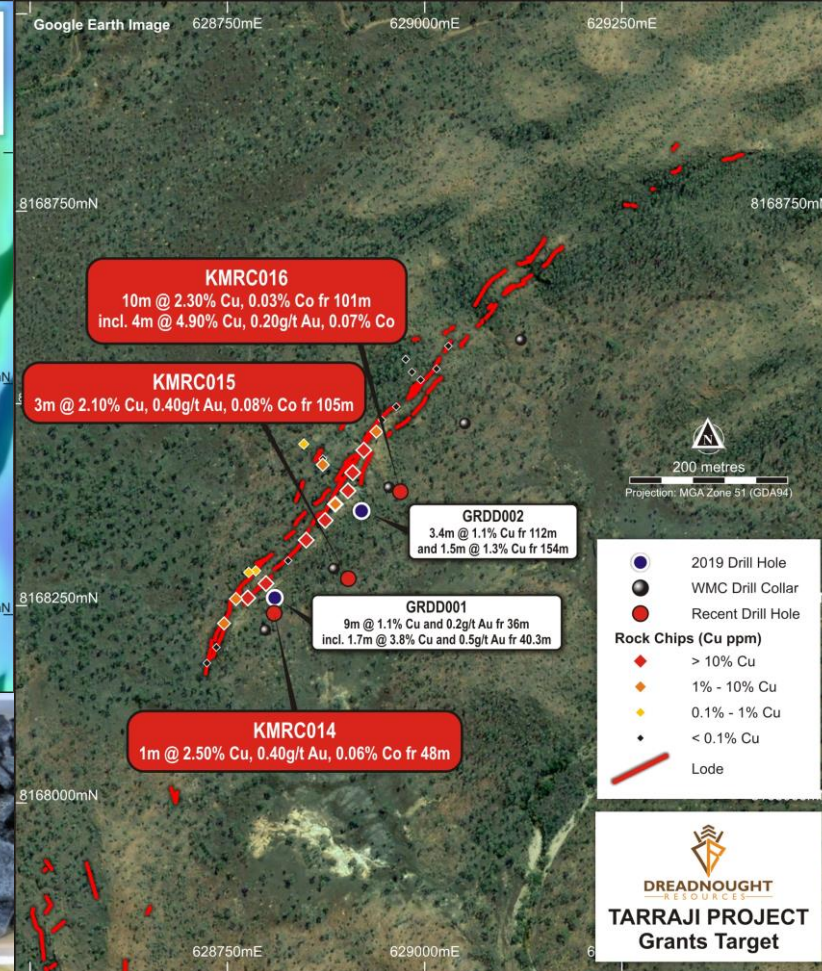
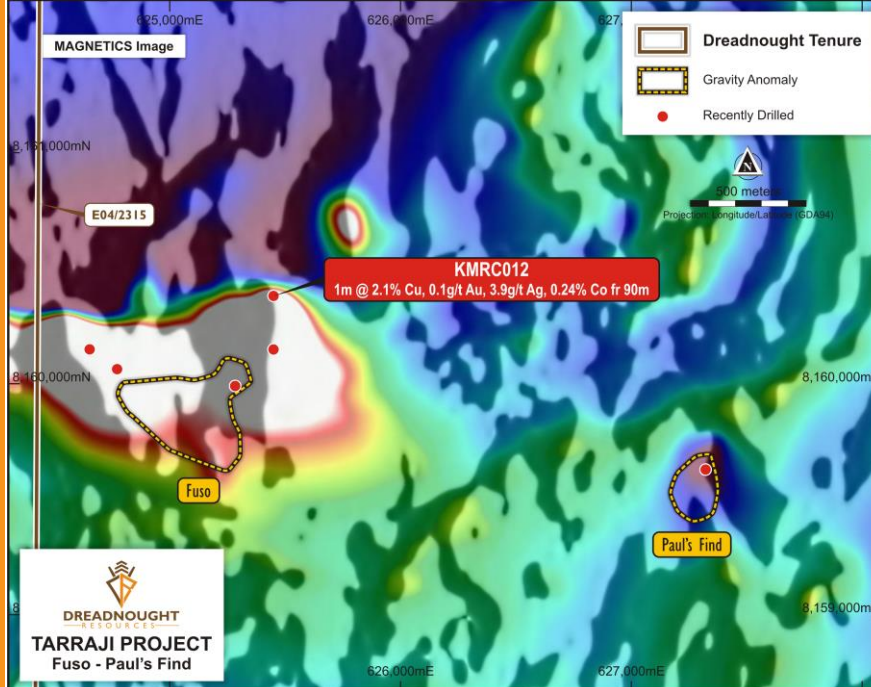
# Grant's Find and Fuso Cu-Au-Co

## ➤ Grant's Find

- Outcropping breccia vein over 800m strike.
- Best intercept to date – most northern drill hole.
- 10m @ 2.3% Cu, 0.03% Co

## ➤ Fuso

- Multiple strong magnetic anomalies, completely under shallow cover.
- New magnetic data indicating we missed the target due to hole deviation.
- 1m @ 2.1% Cu, 0.24% Co, 0.1g/t Au



## Next Steps: Explain the magnetic anomaly and does Grant's Find improve to the North?

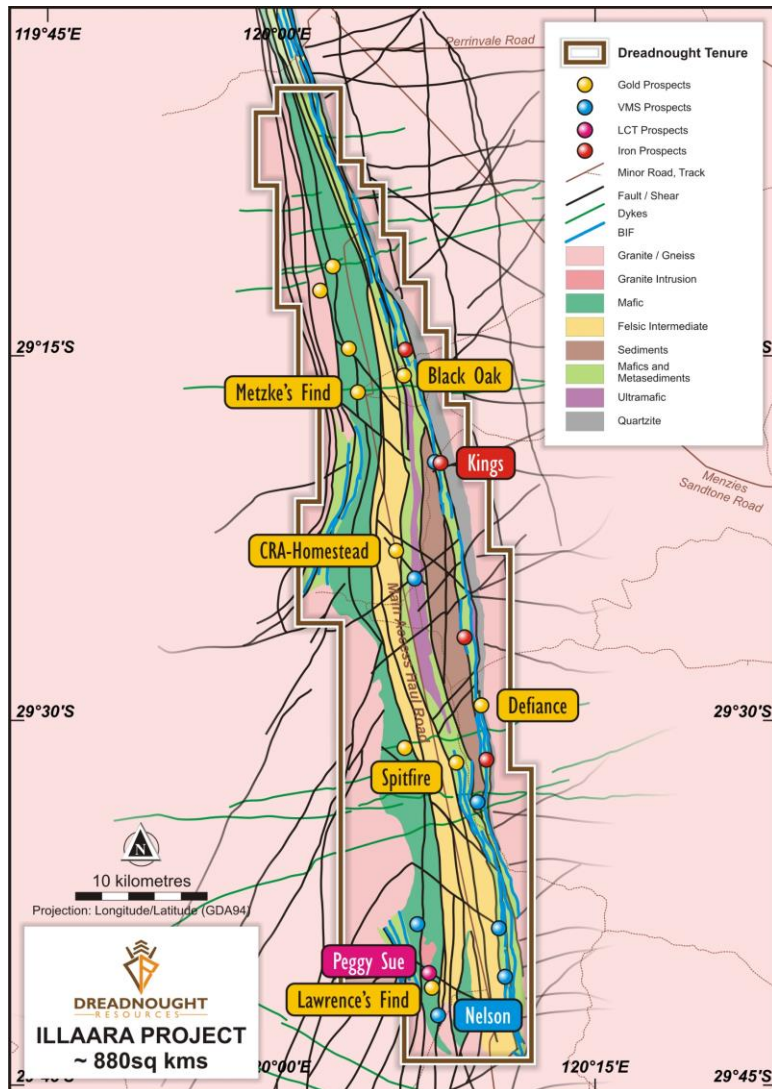
- October 2021: Revisit the Fuso magnetic anomalies
- October 2021: DHEM survey at Fuso
- October 2021: Test Grants further along strike to the north



An aerial photograph of a mining site. The left side of the image is a reddish-brown, arid landscape with sparse vegetation. The right side is a darker, more vegetated area. A white vehicle is visible in the upper left. A horizontal white line is positioned below the title text.

# Ilaara Au-Cu-LCT-Iron Ore Project

# Illara Project Overview



## Lithium Caesium Tantalum Pegmatites – Peggy Sue

- Outcropping fertile LCT pegmatite swarm over an area of 5km x 2kms with multiple clusters of high-grade tantalum (up to 529ppm Ta<sub>2</sub>O<sub>5</sub>)
- Additional mapping and sampling over mineralised clusters will assist with determining zonation trends and define drill targets

## VMS - Nelson

- ~1.4km long Cu-Pb-Zn-Ag anomaly situated over prospective changes in lithology (peak values 640ppm Pb; 1,100ppm Zn; 300ppm Cu; 0.5 g/t Ag)
- FLEM survey to define drill target

## Gold

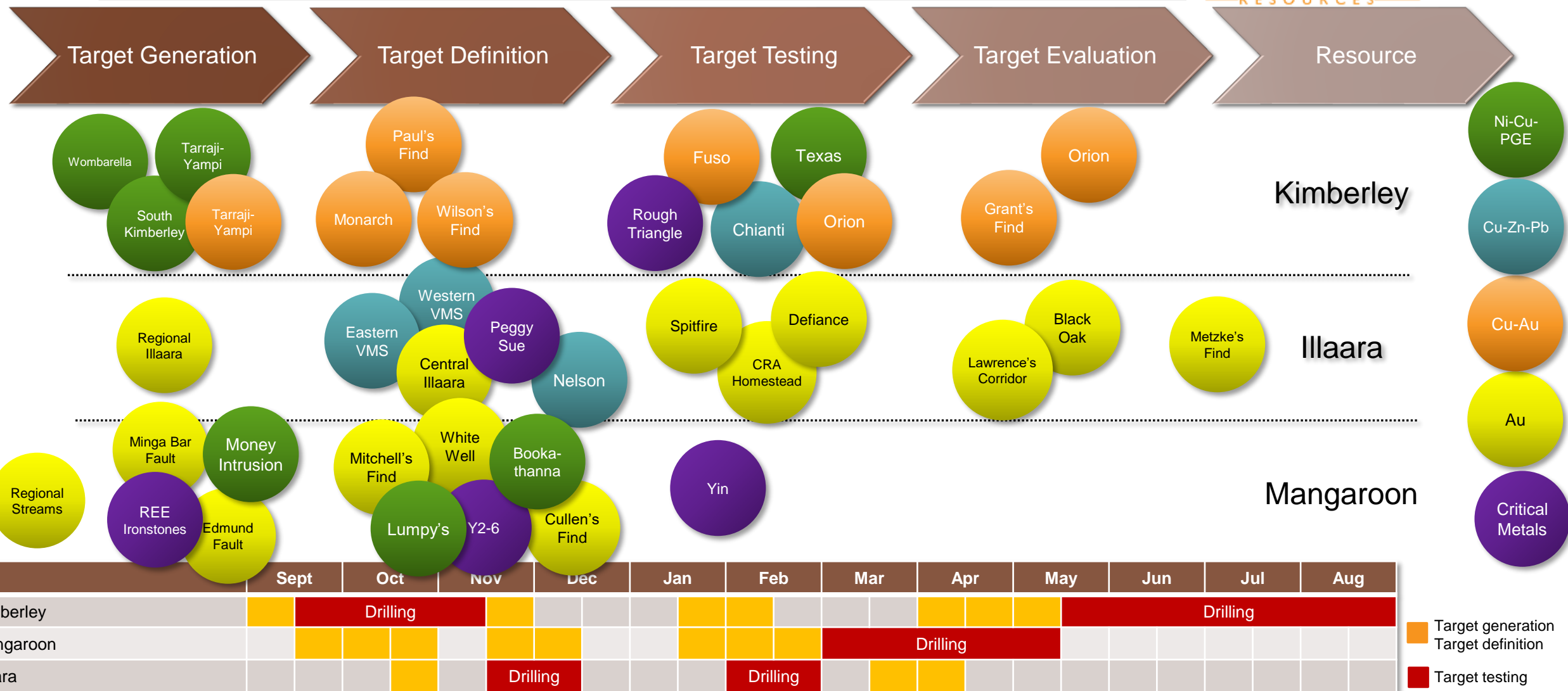
- Near surface high grade gold confirmed at Metzke's and Lawrence's Find – potential to host multiple high grade gold deposits.
  - MZRC016: 3m @ 21.0g/t Au from 85m
  - MZRC019: 2m @ 39.2g/t Au from 45m
  - MZRC017: 7m @ 7.5g/t Au from 51m
  - MZRC022: 2m @ 20.7g/t Au from 19m
- Regional sampling over central and eastern corridor highlighting new large scale coherent gold in soil anomalies

## Iron Ore

- **P-North:** 29m @ 58.6% Fe, 8.3% SiO<sub>2</sub>, 3.4% Al<sub>2</sub>O<sub>3</sub>, 0.04% P, and 4.0% LOI from 6m
  - Incl. 16m @ 64.4% Fe, 2.4% SiO<sub>2</sub>, 1.3% Al<sub>2</sub>O<sub>3</sub>, 0.04% P and 3.7% LOI from 8m
- **Kings:** 49m @ 55.7% Fe, 9.1% SiO<sub>2</sub>, 3.1% Al<sub>2</sub>O<sub>3</sub>, 0.04% P, and 4.0% LOI from 13m
  - Incl. 11m @ 62.7% Fe, 2.5% SiO<sub>2</sub>, 1.2% Al<sub>2</sub>O<sub>3</sub>, 0.05% P and 6.1% LOI from 48m
- **P-3:** 20m @ 58.5% Fe, 2.9% SiO<sub>2</sub>, 1.9% Al<sub>2</sub>O<sub>3</sub>, 0.06% P, and 9.5% LOI from 48m
  - Incl. 5m @ 60.3% Fe, 2.2% SiO<sub>2</sub>, 1.5% Al<sub>2</sub>O<sub>3</sub>, 0.03% P and 8.6% LOI from 55m



# 2021 Work Plan



# Take Away Message

- **Strong news flow: Discovery and evaluation / resource drilling focus for the next 12 months**
- **Kimberley and Mangaroon: first mover with potential for major Cu, Au, Ni and REE deposits**
- **Illaara: Consolidated 75km long underexplored greenstone belt with early exploration success**
- **Experienced management team with a track record of success and strongly aligned with shareholders**

