

OCTOBER 2021



LEGACY MINERALS

GOLD AND COPPER

PRIMED FOR DISCOVERY IN THE
WORLD CLASS LACHLAN FOLD BELT

ASX: LGM

www.legacyminerals.com.au



DISCLAIMER

This presentation may contain certain statements and projections provided by or on behalf of Legacy Minerals Holdings Limited (**ASX: LGM, Legacy Minerals, or the Company**) with respect to the anticipated future undertakings. These forward-looking statements reflect various assumptions by or on behalf of Legacy Minerals.

Accordingly, these statements are subject to significant business, economic and competitive uncertainties and contingencies associated with the mining industry which may be beyond the control of Legacy Minerals which could cause actual results or trends to differ materially, including but not limited to price and currency fluctuations, geotechnical factors, drilling and production results, development progress, operating results, reserve estimates, legislative, fiscal and regulatory developments, economic and financial markets conditions in various countries, approvals and cost estimates, environmental risks, ability to meet funding requirements, share price volatility. Accordingly, there can be no assurance that such statements and projections will be realised. Legacy Minerals makes no representations as to the accuracy or completeness of any such statement of projections or that any forecasts will be achieved.

Additionally, Legacy Minerals makes no representation or warranty, express or implied, in relation to, and no responsibility or liability (whether for negligence, under statute or otherwise) is or will be accepted by Legacy Minerals or by any of their respective officers, directors, shareholders, partners, employees, or advisers as to or in relation to the accuracy or completeness of the information, statements, opinions or matters (express or implied) arising out of, contained in or derived from this presentation or any omission from this presentation or of any other written or oral information or opinions provided now or in the future to any interested party or its advisers. In furnishing this presentation, Legacy Minerals undertakes no obligation to provide any additional or updated information whether as a result of new information, future events or results or otherwise.

Nothing in this material should be construed as either an offer to sell or a solicitation of an offer to buy or sell securities. It does not include all available information and should not be used in isolation as a basis to invest in Legacy Minerals. This presentation contains exploration results and historic exploration results as originally reported the Company's Prospectus dated 28 July 2021 and released 9 September and subsequent ASX market announcements.

The information in this presentation that relates to Exploration Targets, Exploration Results, Mineral Resources or Ore Reserves is based on information compiled by Thomas Wall, a Competent Person who is a Member of the Australian Institute of Geoscientists. Mr Wall is the Technical Director is a full-time employee of Legacy Minerals Limited and a shareholder, who has sufficient experience that is relevant to the style of mineralisation and type of deposit under consideration and to the activity being undertaken to qualify as a Competent Person as defined in the 2012 edition of the Australasian Code for Reporting of Exploration Results, Mineral Resources and Ore Reserves. Mr Wall consents to the inclusion in the report of the matters based on his information in the form and context in which it appears.



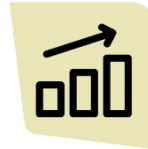
INVESTMENT SNAPSHOT

CURRENTLY DRILLING AND AWATING ASSAYS



- **Maiden drilling completed at Harden**
- Further drill campaigns planned for 2021
- Planned drilling of **16,000m** over the next two years testing shallow targets

SIGNIFICANT DISCOVERY EXPOSURE



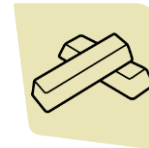
- Five significant gold and copper projects
- **100% owned and unencumbered**
- Exposure to multiple discovery opportunities
- **numerous potential value catalysts**

JURISDICTION AND EXPOSURE

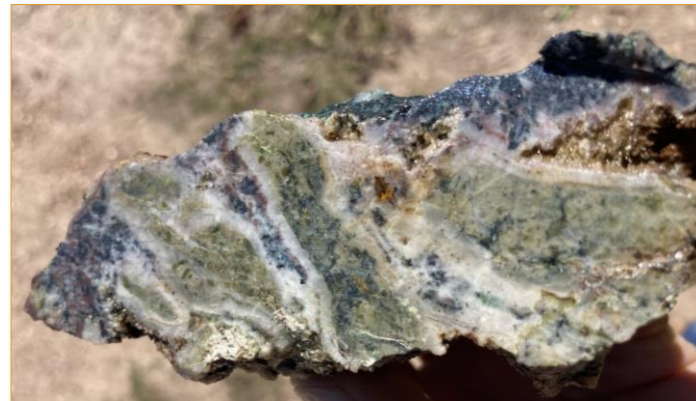


- **Prime position in the Lachlan Fold Belt**
- Diverse mineral system exposure including **porphyry related Cu-Au, epithermal Au-Ag, and Cobar-type**

SIGNIFICANT EXPLORATION POTENTIAL



- High grade and shallow exploration targets present an opportunity for **near term resource definition**



Bauloora Mine mullock

**19.8g/t Au, 462g/t Ag, 6.28% Cu,
7.31% Pb, and 2.07% Zn**

STRATEGY AND COPROATE SNAPSHOT¹

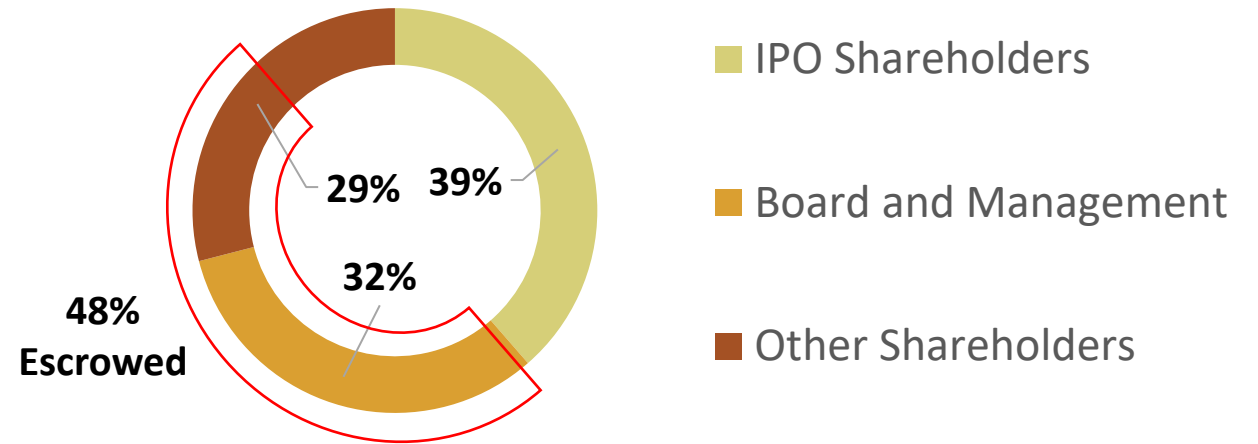
CAPITAL STRUCTURE

ASX Share Price	\$0.205
Shares on Issues	75.2M
Options on Issue (\$0.3)	4.9M
Market Capitalisation	\$15.4M
IPO Capital Raised (13 September 2021)	\$5.8M
Debt	Nil

COMPANY STRATEGY

Legacy Minerals concentrates on geological terrains which are amenable to low-cost exploration techniques with a focus on high-grade gold and base metal mineralisation

ISSUED CAPITAL



COMPANY SNAPSHOT

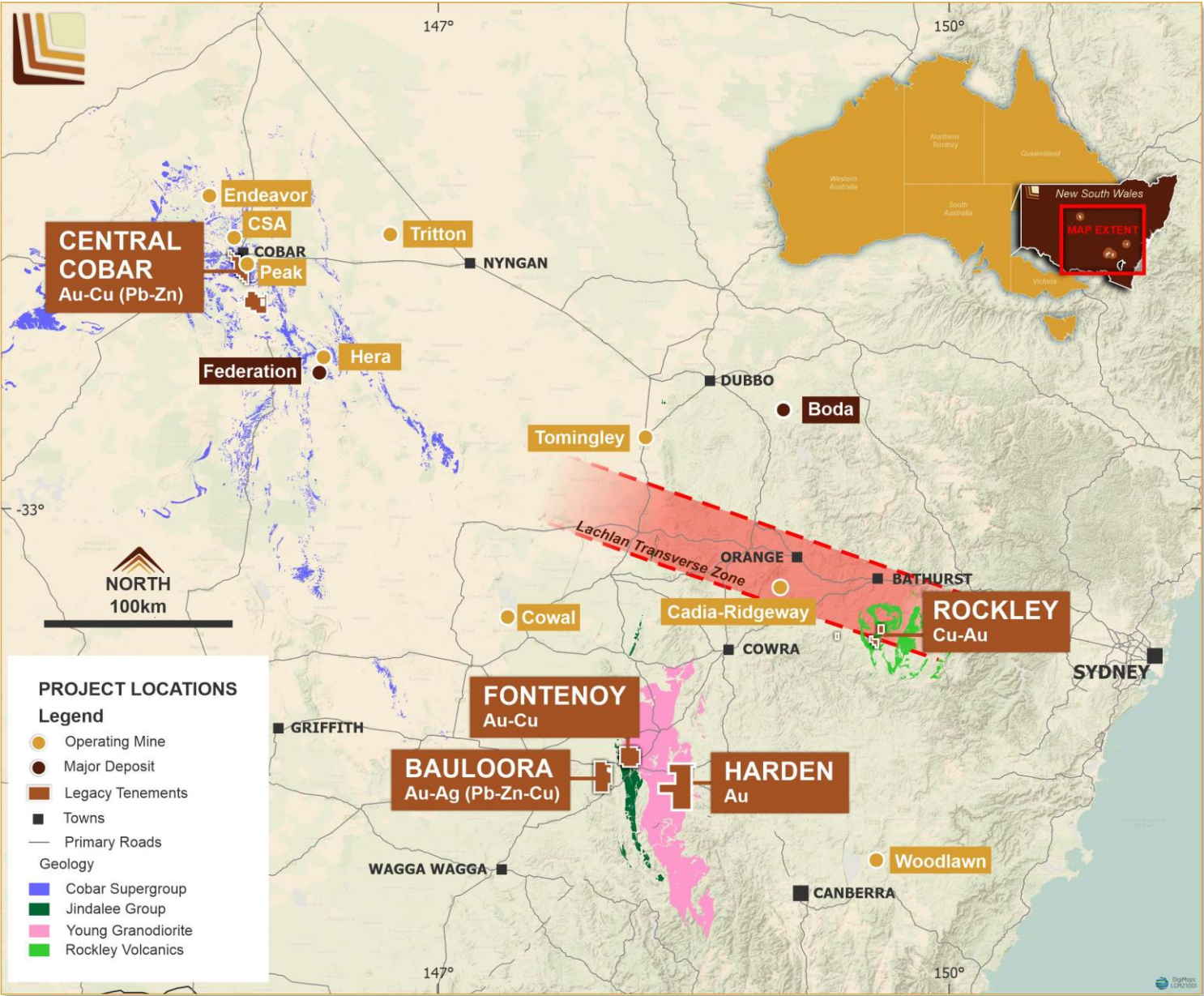
Top 20 Shareholders	63%
Escrowed Shares (12m and 24m)	36M (12m and 24m)
Institutional Investment	23% of IPO Bookbuild
Holders Above 100,000 Shares	82% of issued capital

PROJECT PORTFOLIO

LACHLAN FOLD BELT

- Home to several world class mines:
 - Cadia-Ridgeway (50M oz Au, 8.7Mt Cu)
 - Cowal (11M oz Au)
 - Peak Gold Mines (~10Mt at 7g/t Au)
- Excellent infrastructure, mining and exploration friendly jurisdiction
- Accessible and cost-effective exploration all year round

LGMs Tenements	Area Km ²
Total Tenure	864



The right people to make discoveries



Thomas Wall

Executive Director & Exploration Manager
M.Phil (Sc), B.Sc. (Hons), MAIG, MAusIMM

- Wide ranging experience exploration industry with senior roles at Peak Gold Mines and New South Resources.
- Demonstrated exploration and mining success across a variety of commodities and deposit styles



Doug Menzies

Non-Executive Director
B.Sc. (Hons), MAIG, MSEG

- Widespread experience in the porphyry gold-copper districts of PNG and Australia, epithermal gold-silver projects in Australia, Indonesia, Fiji, Laos, Chile
- 28 years of experience in the mineral exploration and GIS industries holding positions at Rio Tinto, MapInfo and Wafi-Golpu

And the team to develop them



Dr David Carland

Non-Executive Chairman
PhD (Econometrics); MEd; BEc (Hons), MAICD

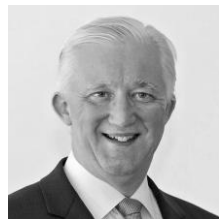
- Over 40 years of investment banking and commercial experience in both the private and government sector holding senior positions at UBS, Bankers Trust and CRA (now Rio Tinto)
- Has a track record of success in the mining space with current and past board positions for listed juniors including Rex Minerals



Chris Byrne

CEO & Managing Director
B.Eng. (Hons), B.Sc., M.Pm., MAusIMM, MAICD

- Diverse experience in the mining sector with Anglo American across maintenance, operations, and capital works
- Proven record of delivering large and complex mining and infrastructure projects in greenfield and brownfield environments



Ian Morgan

CFO and Company Secretary
B Bus, M Com Law, CA, ACIS, MAICD

- Over 35 years of experience in the resources space including holding the position of Company Secretary and CFO for other listed public companies.



Matt Wall

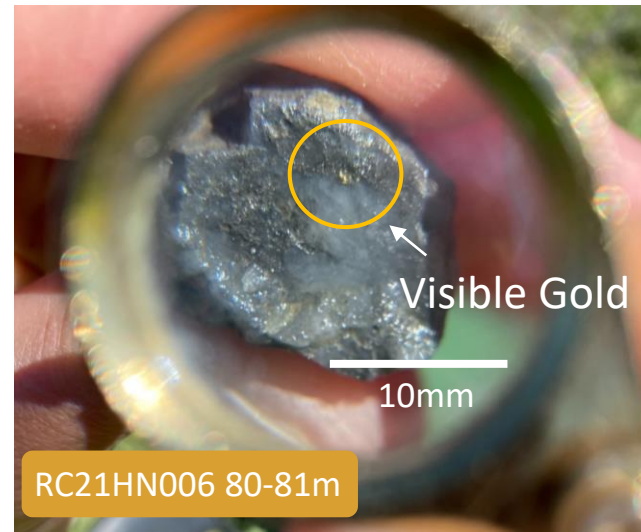
Non-Executive Director
CTE, MCILT

- A metals & mining specialist with over 35 years of experience in sales, marketing, logistics, trading, and risk management
- He has held senior management roles with Rio Tinto, EDF Trading and Wood Mackenzie



INITIAL RC DRILL CAMPAIGN COMPLETE

HIGH GRADE GOLD ASSAYS FROM INITIAL HOLES



HARDEN PROJECT

PROJECT HIGHLIGHTS

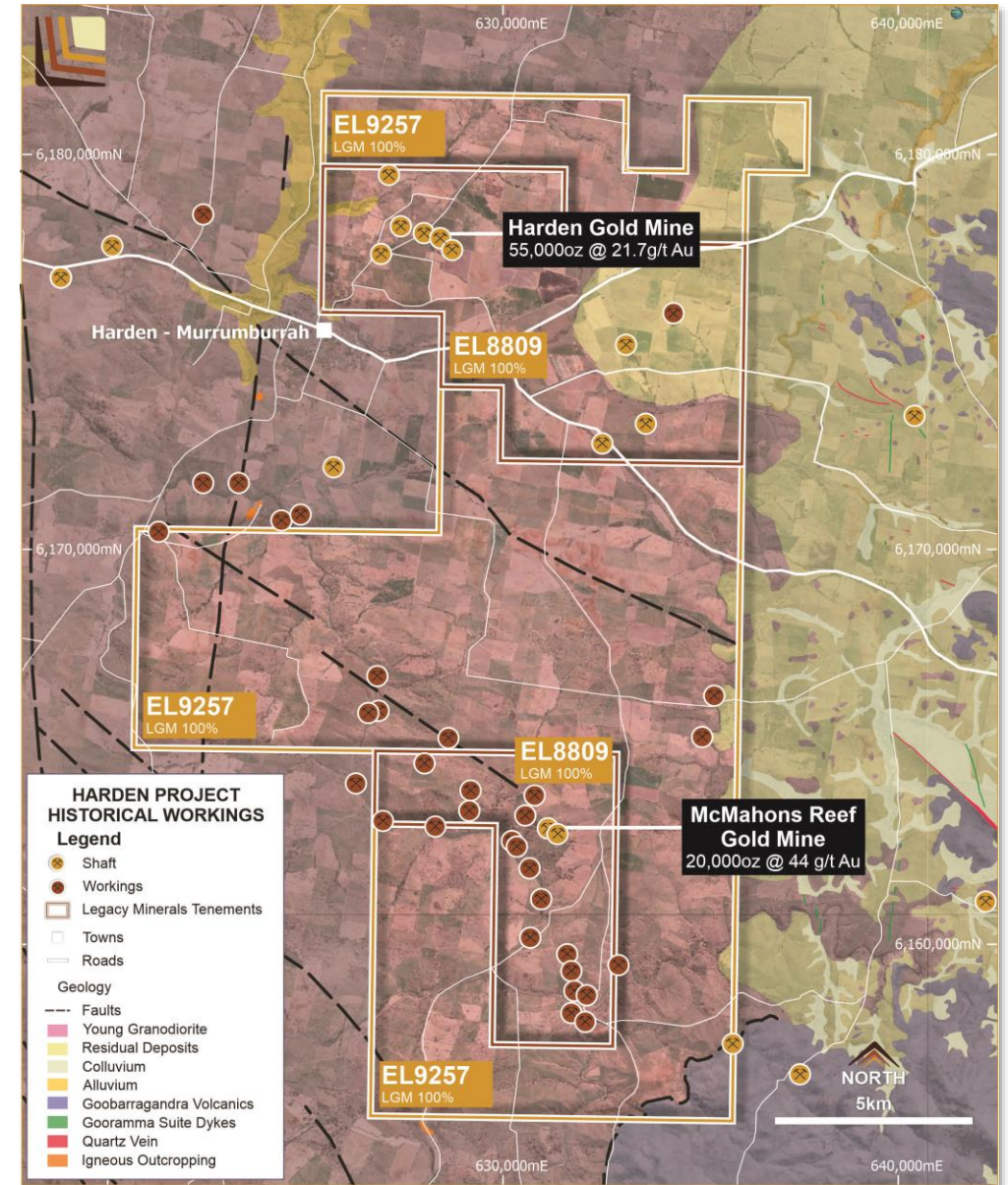
- LGM tenements cover the two largest historical hard rock mines in a district that has produced **460,000 oz of gold**
- These two mines produced **75,000 oz Au @ 28.6g/t Au**
 - **Production grades of up to 50g/t Au**
- Mineralised from surface - open along strike and down plunge
- Untested IP anomalies

RECENT HIGH-GRADE DRILL INTERCEPTS:

- **2m @ 19.09g/t within 5m @ 7.81g/t Au from 111m**
- **3m @ 4.62g/t Au from 79m within 8m @ 2.45g/t Au**
and historic intercepts:
- **3.6m @ 21.7g/t Au from 116m incl. 2m @ 37.9g/t Au**
- **3m @ 10.8g/t Au from 20m incl. 1m @ 19.2g/t Au**



LEGACY MINERALS



HARDEN DRILLING

UNCOVERING A HIGH-GRADE GOLD SYSTEM

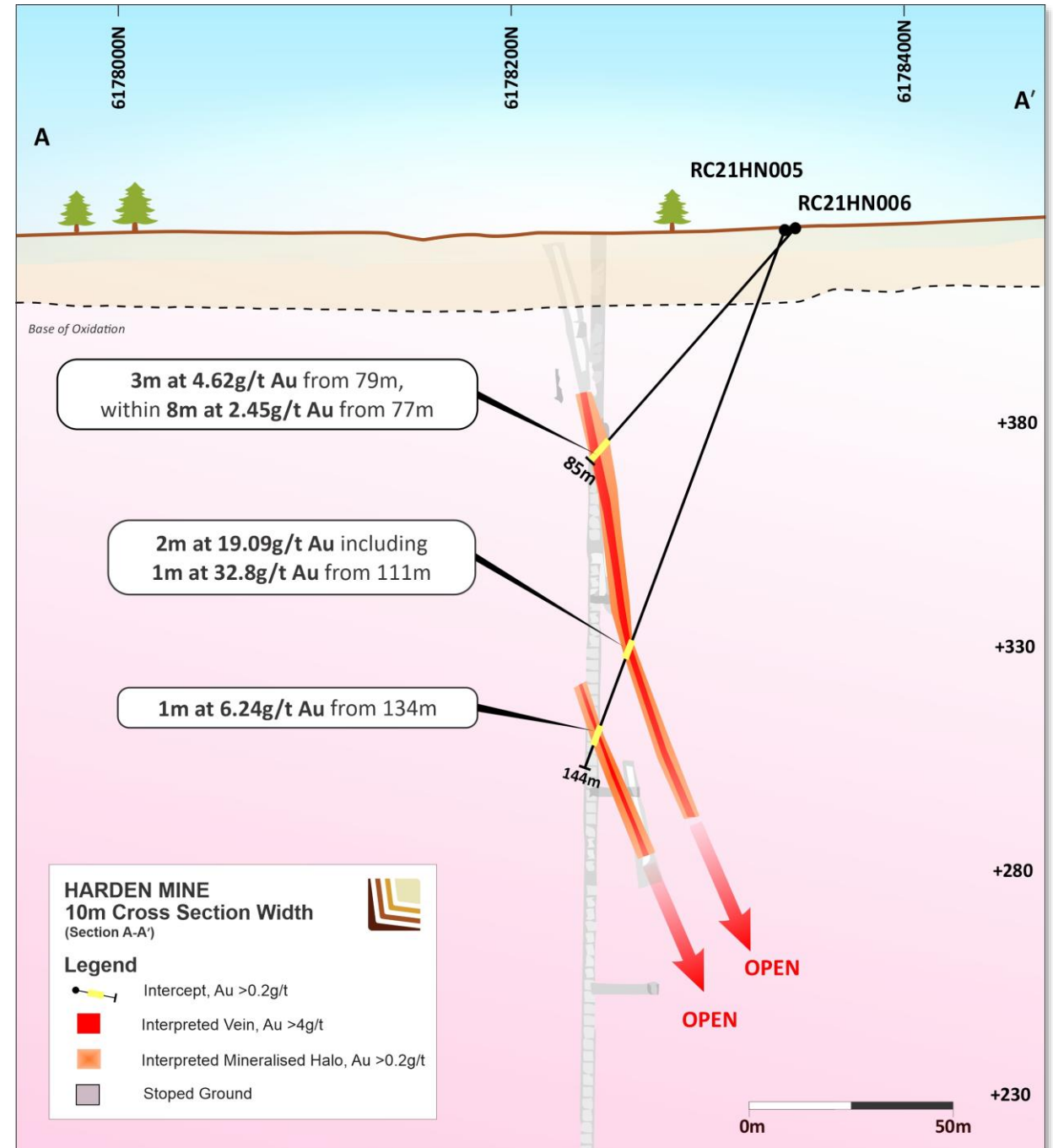
- **Known Harden Gold Mine Corridor 1.4km long**
- Predictable lode structure
- **Parallel high-grade veins**
- High-grade gold mineralisation associated with quartz veining with abundant pyrite and minor amounts of galena and sphalerite
- Chlorite-sericite-pyrite alteration halo
- **Open along strike, down dip and to surface**

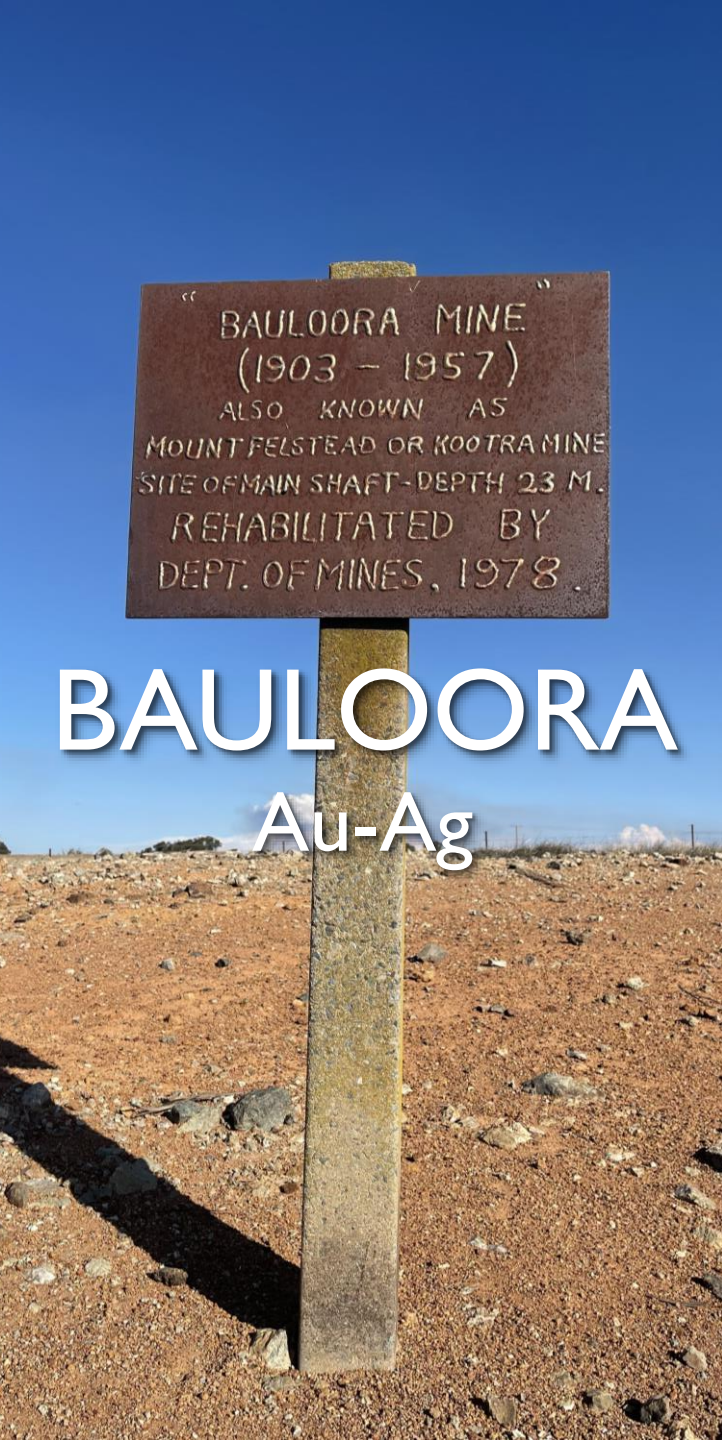
AGGRESSIVE ONGOING EXPLORATION

- 1,550m RC drill campaign completed
- Over 5000m of RC drilling budgeted for the Harden Project
- **High-grade and shallow mineralisation presents near term resource definition opportunity**



LEGACY MINERALS





BAULOORA

Au-Ag

DRILL READY

BONANZA GRADES

LOW SULPHIDATION EPITHERMAL



BAULOORA

PROJECT HIGHLIGHTS

- One of the largest epithermal alteration footprints in NSW
- Bonanza Ag grades and high-grade Au and base metals:
 - 3701g/t Ag, 6.9g/t Au, 29% Pb, 26% Zn, 6.4% Cu (face sample at Bauloora Mine)

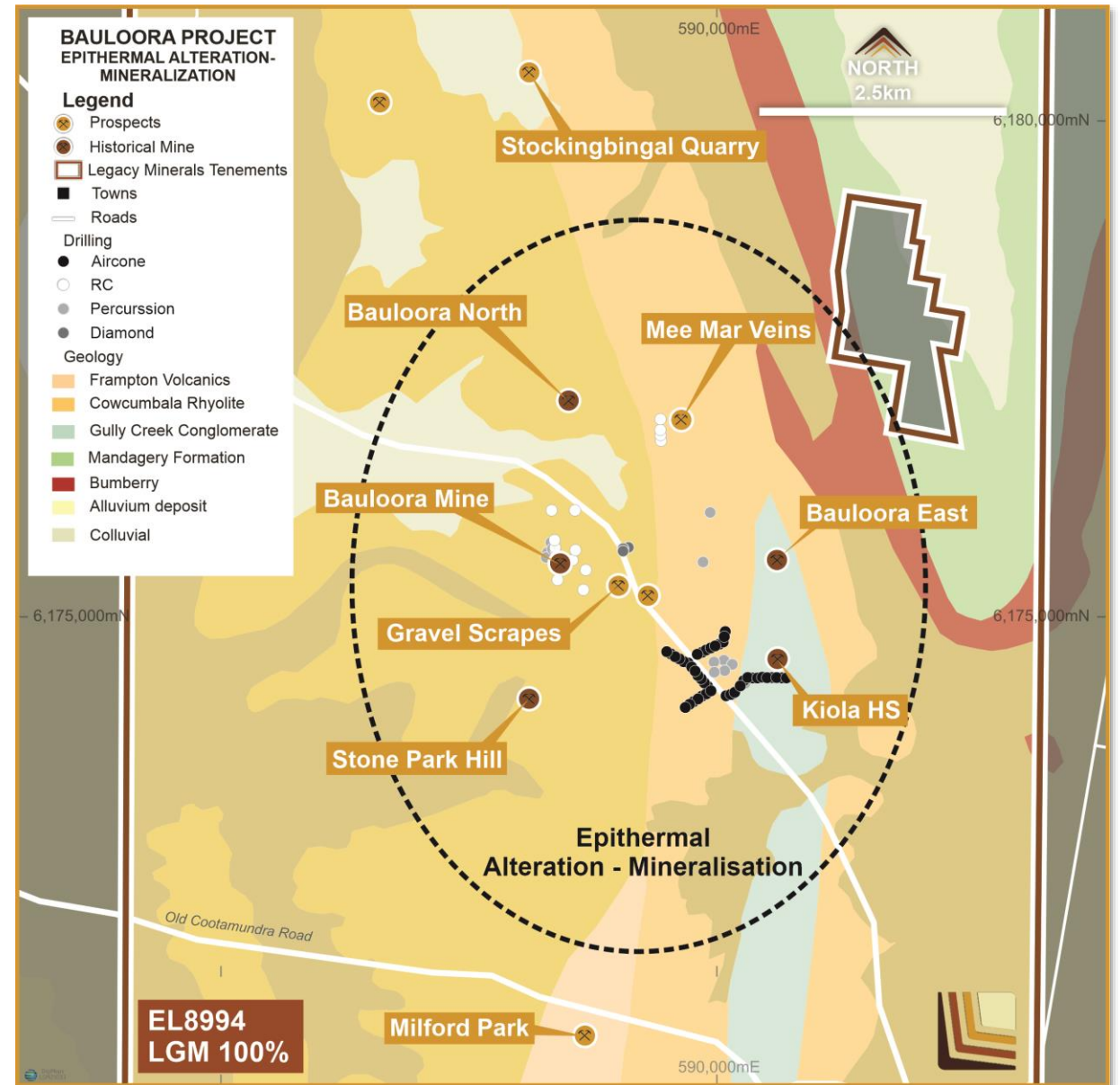
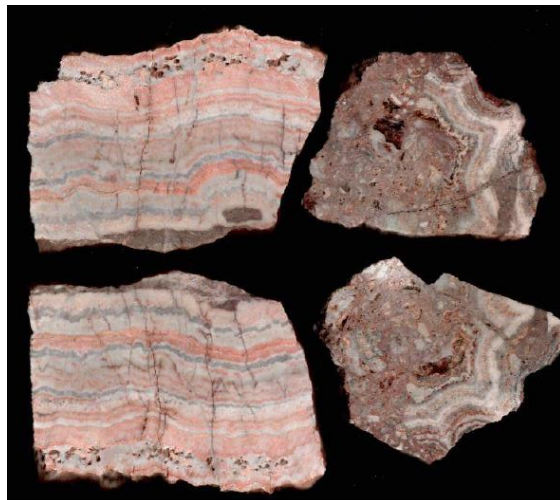
MULTIPLE HIGH PRIORITY TARGETS

- Mee Mar prospect: up to 5m wide and strike > 2km
 - Up to **39g/t Au** rock chip samples
- Gravel Scrapes prospects: up to **8g/t Au** rock chip samples
- Bauloora Mine prospect

TEXT-BOOK ROCKS

Ginguro Colloform Banding:

- grading up to **39g/t Au**



BAULOORA

BONANZA SILVER GRADES

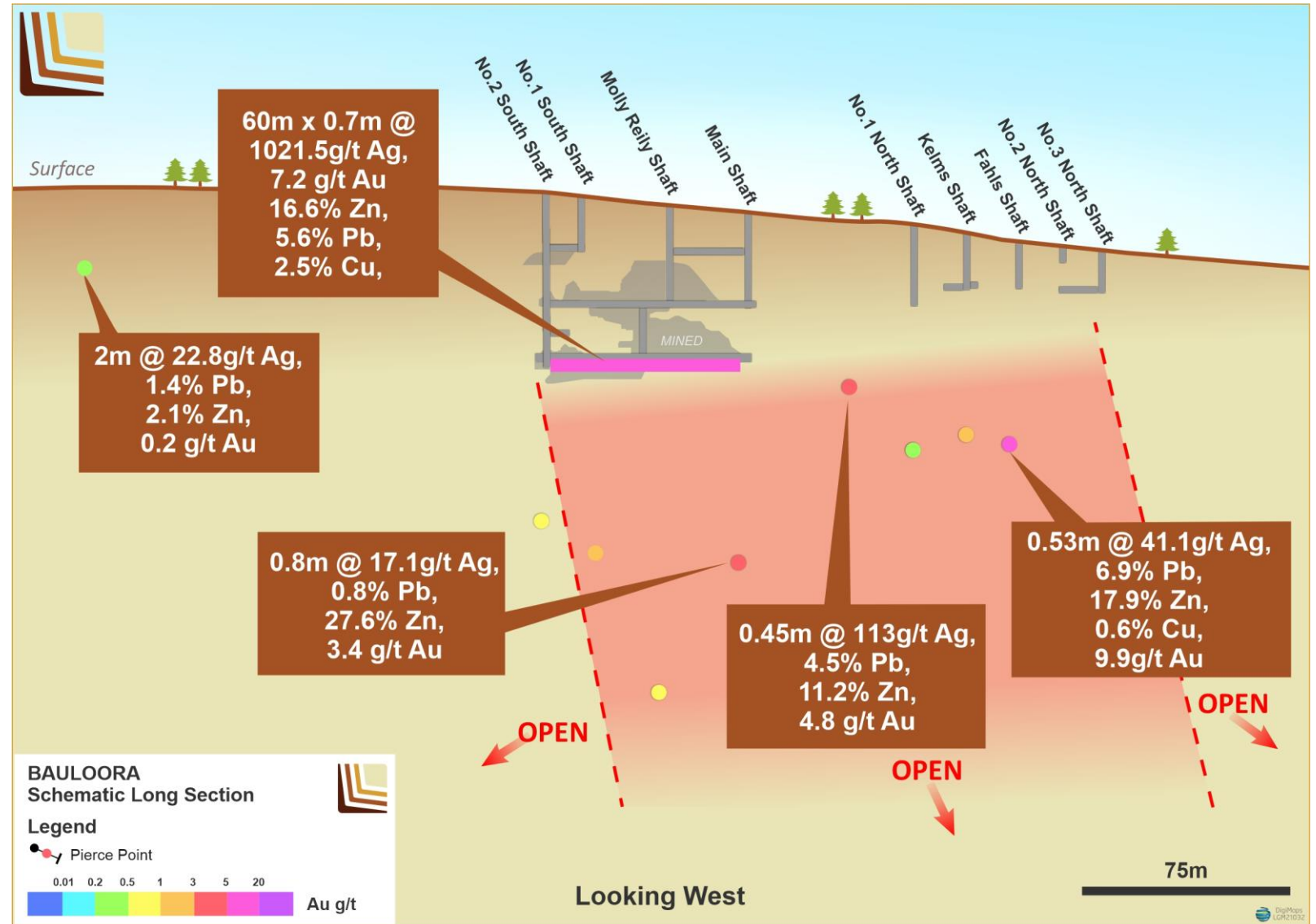
- Historic high-grade mines with **ore widths up to 3.5m**
- **Bonanza silver grades** sampled in an unmined production drive

DRILL READY TARGETS

- Mineralisation open along strike and down plunge at the Bauloora Mine prospect
- Multiple drill targets across the tenement

NEXT STAGES

RC Drill Campaign
planned to test the
Bauloora Mine target

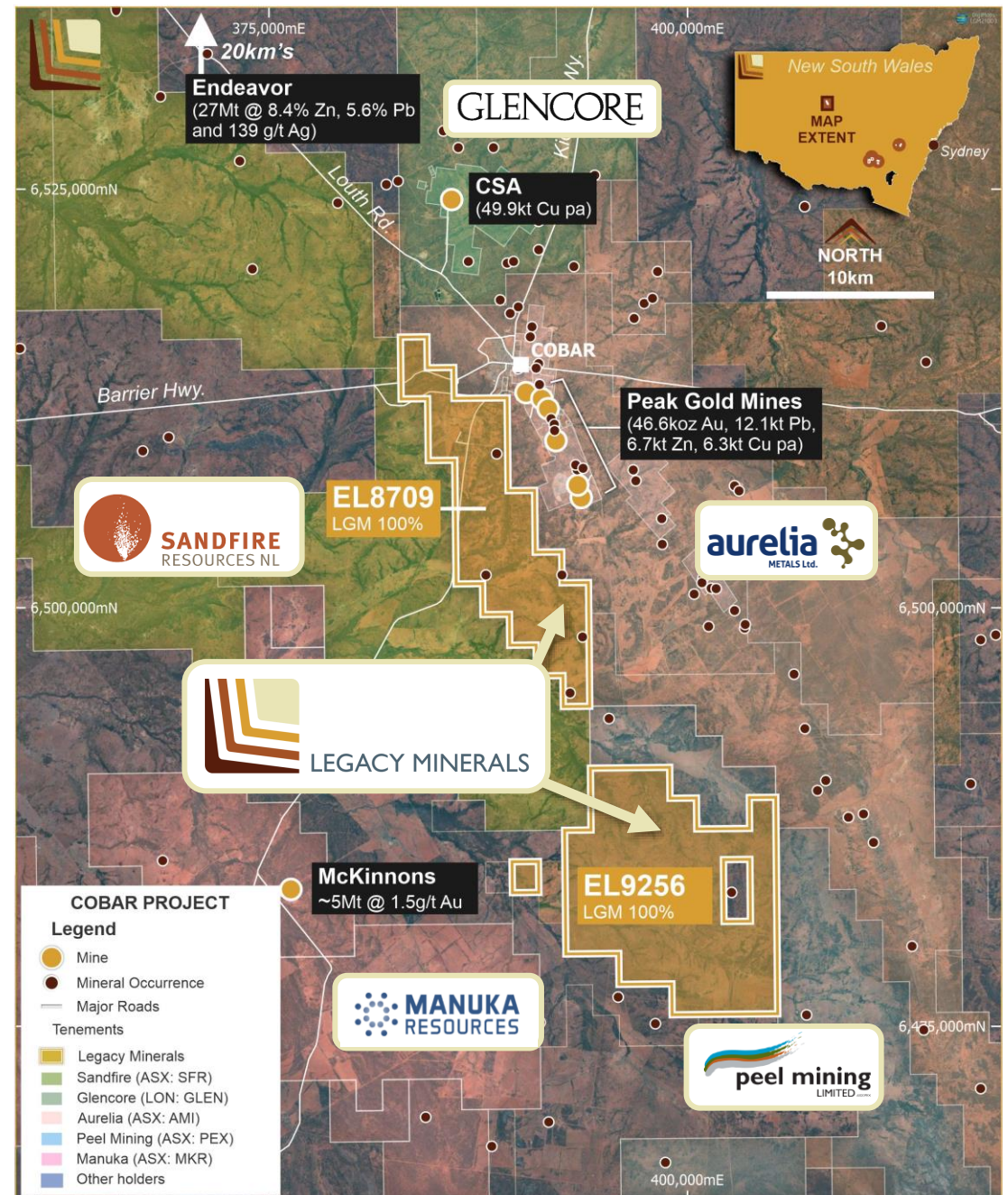


COBAR

Au-Cu
(Pb-Zn)

UN-DRILLED
SEARCH SPACE

HOME TO
WORLD CLASS
MINERS AND
EXPLORERS

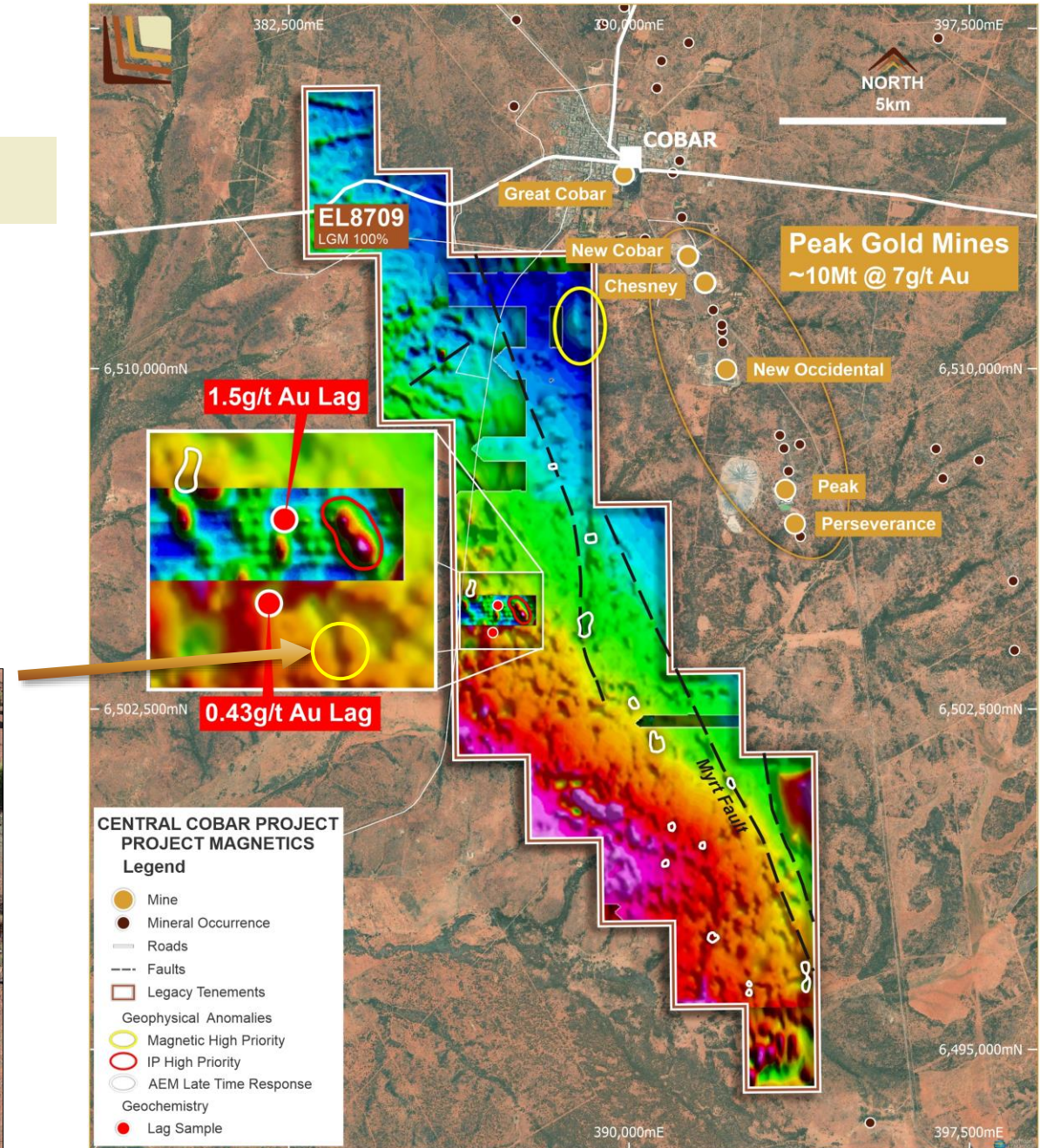


CENTRAL COBAR

HIGHLIGHTS

- **Undrilled targets** next door to the Peak Gold Mines
- Several priority geophysical anomalies
 - **Late time AEM conductors, IP anomaly, and magnetic targets**
- Geochemically anomalous:
 - **Gold in lag up to 1.5g/t Au & 0.43g/t Au**
- >1,000km of co-operative government aerial magnetics and radiometrics flown – **results expected Dec**

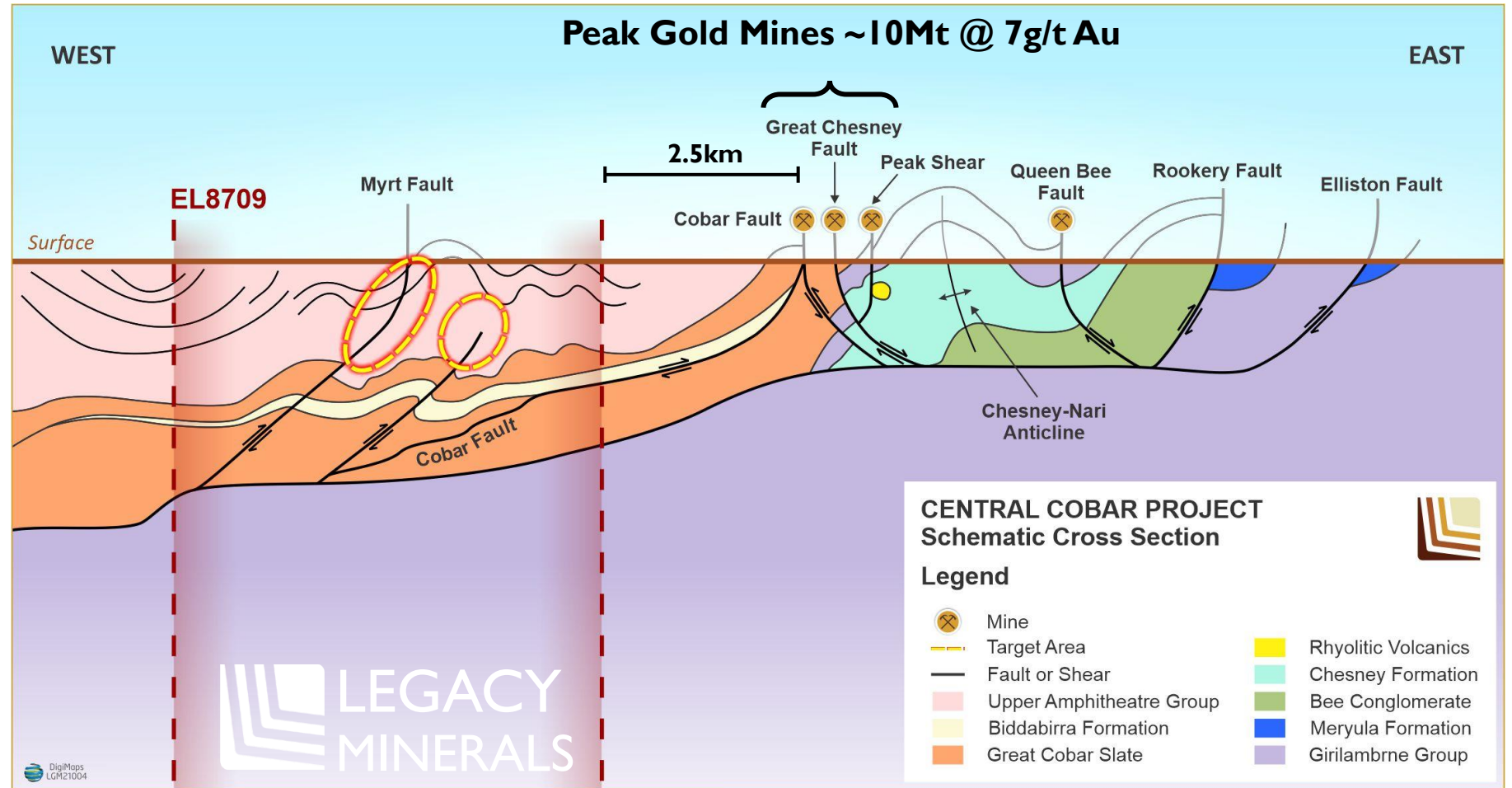
Shaft and workings
(Yarrowonga Anomaly)



CENTRAL COBAR - UNTESTED POTENTIAL

ALL THE RIGHT INGREDIENTS

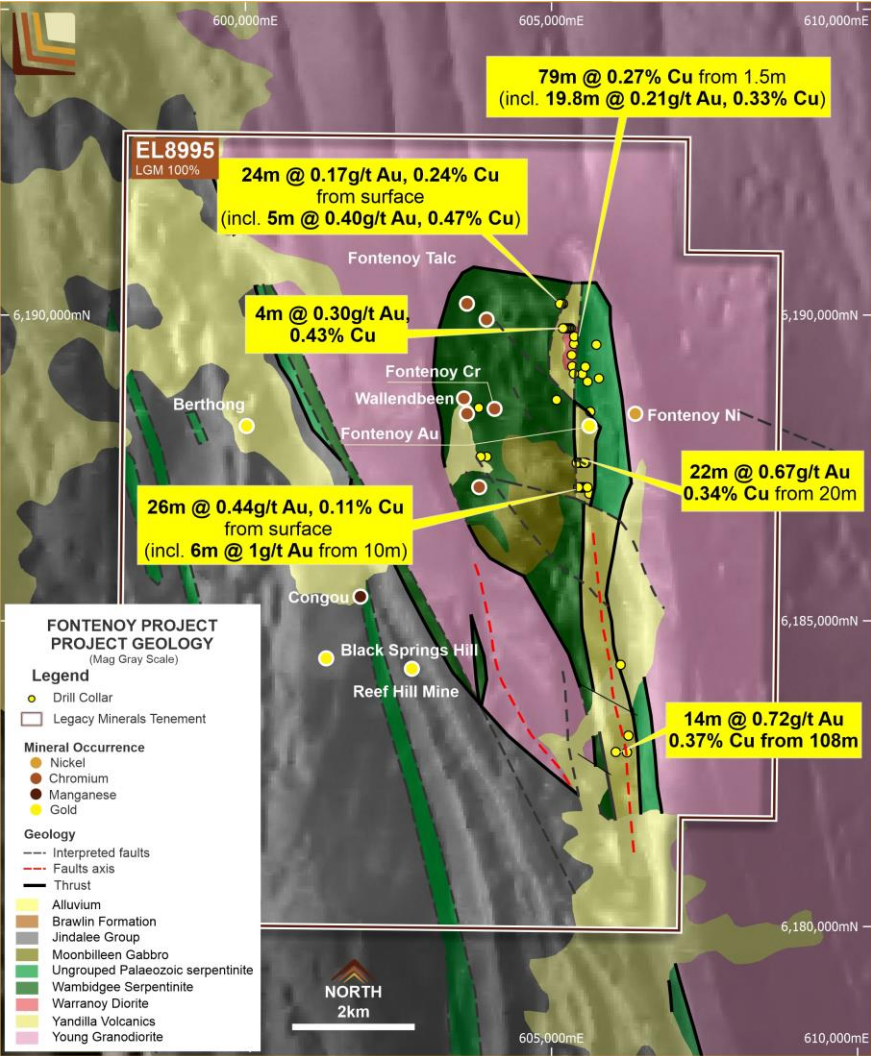
- ✓ Structural complexity
- ✓ Geochemical anomalism
- ✓ Geophysical anomalism
- ✓ Neighbouring world class deposits
- ✓ Proximity to infrastructure and skilled mining workforce



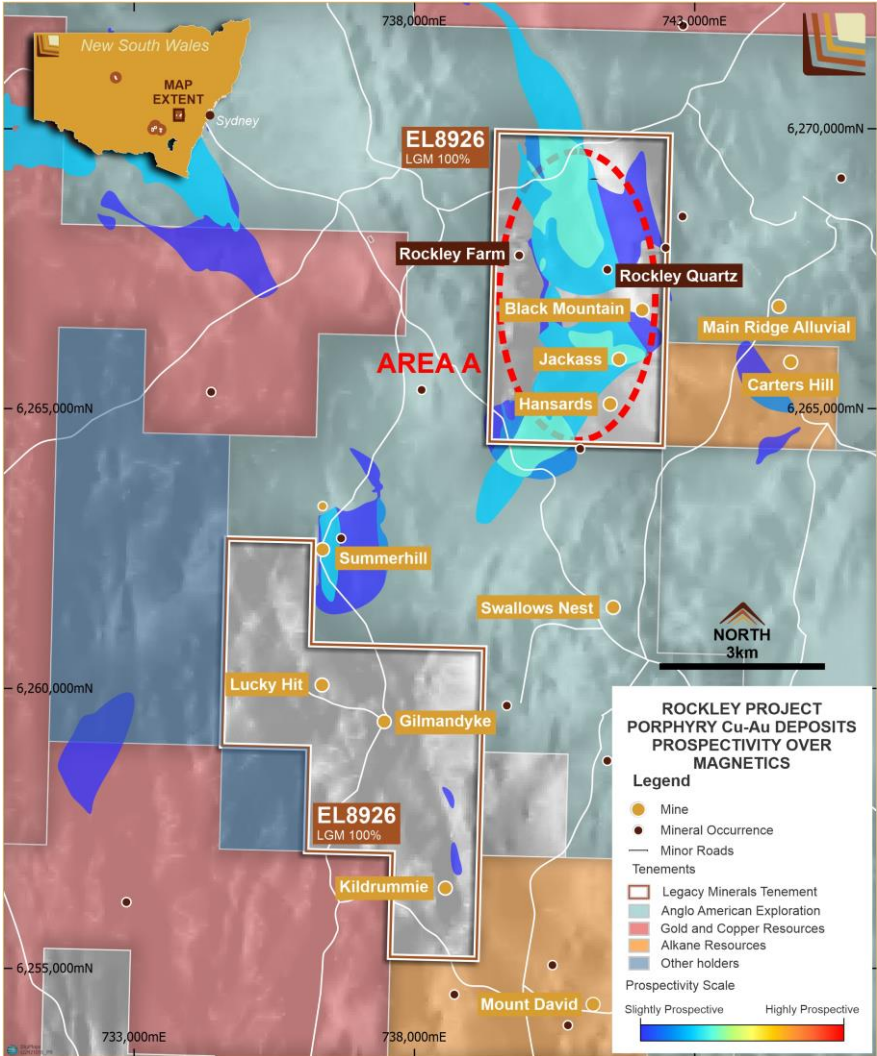


PIPELINE OF POTENTIAL COMPANY MAKERS

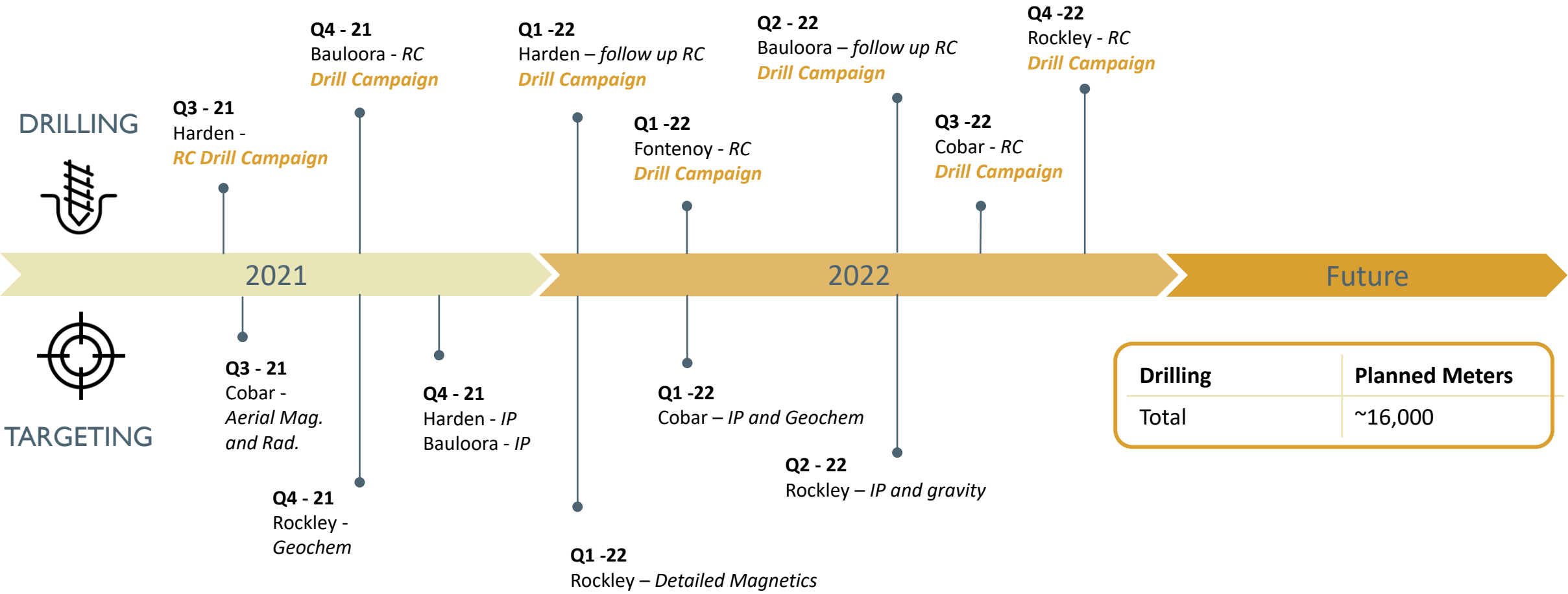
FONTENOY Au-Cu



ROCKLEY Cu-Au



INDICATIVE TIMELINE



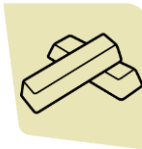
PRIMED FOR DISCOVERY



CURRENTLY DRILLING



PROJECT JURISDICTION AND EXPOSURE



EXPLORATION POTENTIAL



EXPERIENCED TEAM



LEGACY MINERALS

CONTACT

Chris Byrne

CEO and Managing Director

chris.byrne@legacyminerals.com.au

+61 (0) 409 392 326

Victoria Humphries

Media & Investor Relations

victoria@nwrcommunications.com.au

+61 (0) 431 151 676