

Date: 27 October 2021

**Announcement authorised by:**

Samuel Weiss  
Chairman  
Altium Limited

ALT IUM L I M I T E D

ACN 009 568 772

Level 6, Tower B  
The Zenith  
821 Pacific Highway  
Chatswood NSW 2067  
Australia

Investor Relations  
Contact Details:  
Kim Besharati  
Chief of Staff (US based)  
Phone: +1 858 864 1513  
Mobile: +1 760 828 3567

## 2021 RBC Technology Conference Presentation

**Sydney, Australia – 27 October 2021** - Electronic design software company Altium Limited (ASX:ALU) attaches a presentation to be presented virtually at the RBC Technology Conference today by Altium Chief Software Architect Leigh Gawne and Altium CEO Mr Aram Mirkazemi.

This presentation provides a software demonstration and overview of Altium's cloud platform Altium 365.

**Investor Relations contact details:**

Kim Besharati  
Chief of Staff (US based)  
Phone: +1 858 864 1513  
Mobile: +1 760 828 3567

Natasha Davidson  
General Counsel  
Mobile: +61 417 228 389

## About Altium

Altium (ASX:ALU) is a multinational software corporation headquartered in San Diego, California, that focuses on electronics design systems for 3D PCB design and embedded system development. Altium products are found everywhere from world leading electronic design teams to the grassroots electronic design community. With a unique range of technologies, Altium helps organizations and design communities to innovate, collaborate and create connected products while remaining on time and on budget. Products provided are ACTIVEBOM®, ActiveRoute®, Altium 365®, Altium Concord Pro™, Altium Designer®, Altium NEXUS®, Altium Vault®, Autotrax®, Camtastic®, Ciiva™, CIIVA SMARTPARTS®, CircuitMaker®, CircuitStudio®, Common Parts Library™, Draftsman®, DXP™, Easytrax®, EE Concierge®, NanoBoard®, NATIVE 3D™, OCTOMYZE®, Octopart®, P-CAD®, PCBWORKS®, PDN Analyzer™, Protel®, Situs®, SmartParts™, Upverter®, X2®, XSignals®, PCB:NG®, and Gumstix®. Founded in 1985, Altium has offices worldwide, with US locations in San Diego, Boston, Dallas and New York City, European locations in Karlsruhe, Kiev, St Petersburg, Moscow, Munich, Markelo and Zug, and Asia Pacific locations in Shanghai, Beijing, Shenzhen, Tokyo and Sydney. For more information, visit [www.altium.com](http://www.altium.com). You can also follow and engage with Altium via Facebook, Twitter, LinkedIn and YouTube. [www.altium.com](http://www.altium.com)



2021 RBC Capital Markets  
Australian Technology Conference

# Altium's Software and Cloud Platform for Electronics Design and Manufacturing

Aram Mirkazemi CEO  
Leigh Gawne CSA

Virtual  
October 27th  
2021

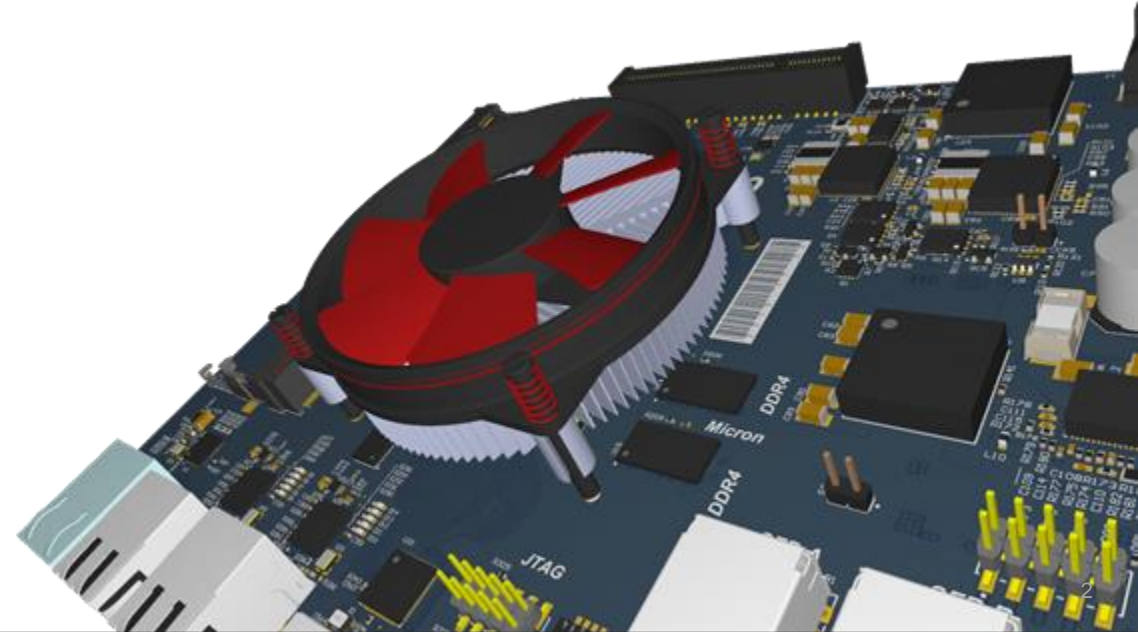


# Altium is the Leading Platform for Electronics Design



- Smart products have electronics at their core. They are complicated to develop and require different people working together to be successful.
- Altium's 35 year journey in partnership with its customers combined with a relentless drive is making the last mile of digital transformation possible.
- Altium 365 is the leading platform for electronics design and manufacturing. It enables the stakeholders in the value chain to work together collaboratively, ultimately delivering business success.
- Thousands of person-years of R&D investment and a genesis that began over a decade ago, Altium 365 delivers truly unique capabilities to thousands of companies around the world every day.

***Hardware is Hard!***



# Connecting All Stakeholders in the Value Chain



Mechanical  
Engineer



Electronics  
Engineer



Project  
Manager



Procurement  
Professional

Increasing productivity by connecting  
all processes and stakeholders along  
the value chain on the cloud



Manufacturing  
Engineer



Librarian



Software  
Engineer



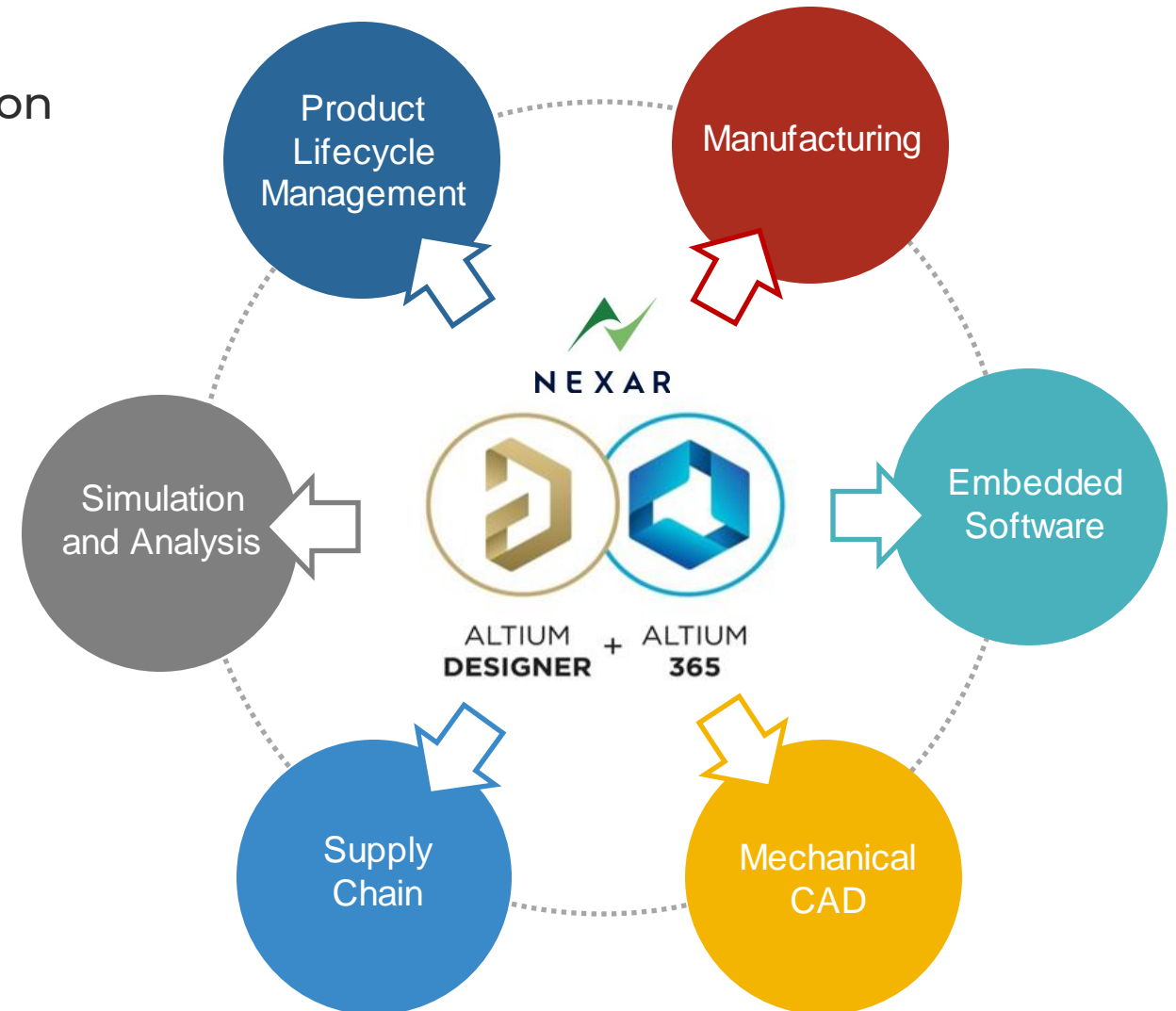
Quality &  
Compliance

# Connecting Electronics to Broader Product Design and Manufacturing Ecosystems



Digital bridges on the cloud are the foundation for connected, model-based collaboration

- Electronic CAD is the gravitational center for data and collaboration for modern smart products.
- Digital continuity with adjacent domains is critical for the challenges of modern-day electronic product design - tools and platforms must integrate.
- Models enable intent and context to be preserved throughout the design to realization process and across domains, meaning faster cycles with fewer errors.

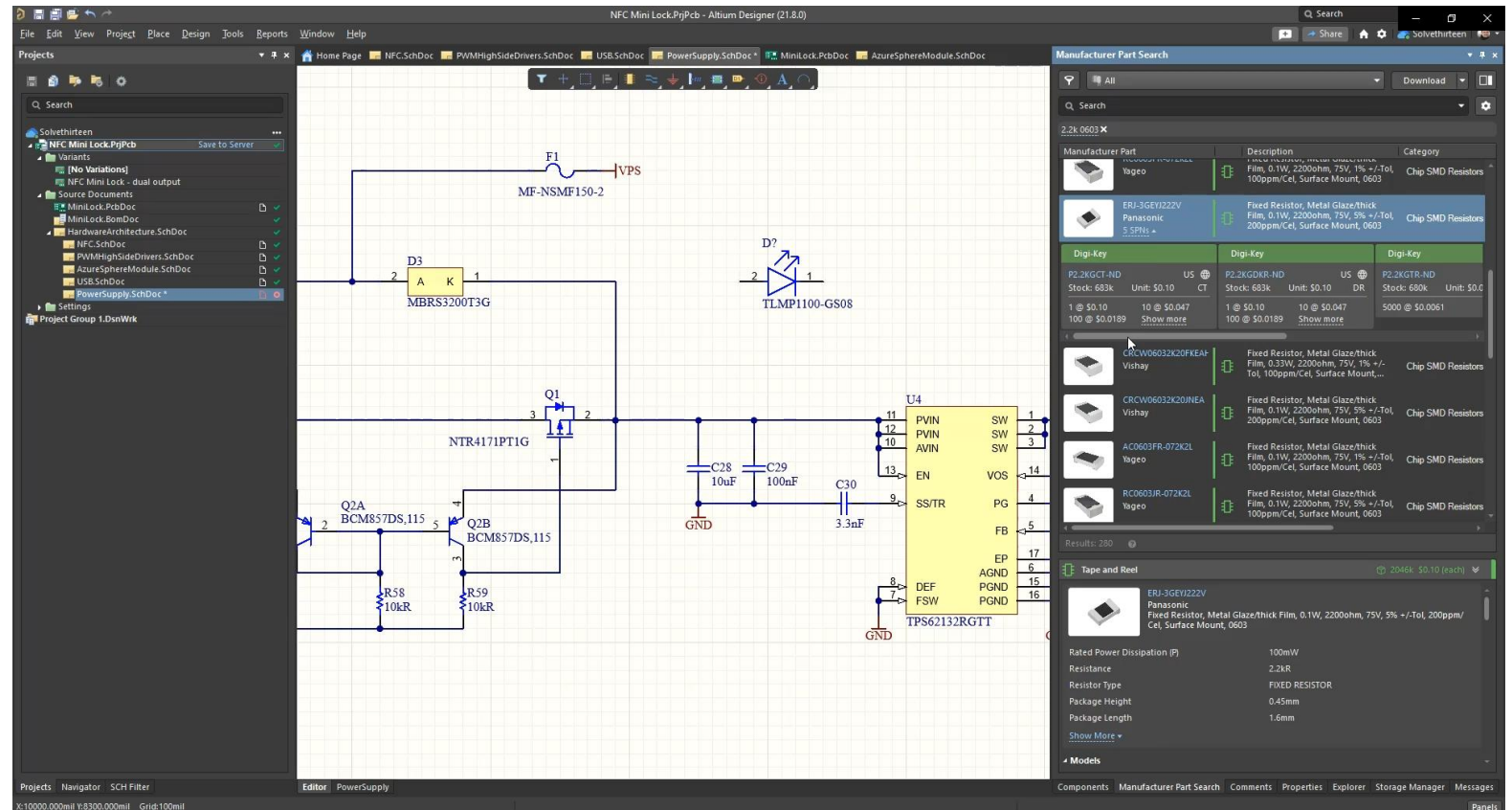


# Design Authoring from the Simple to the Complex

Altium

Altium Designer is the de facto standard for PCB design used by tens of thousands of companies around the world

- Unified design environment with world leading schematic capture and PCB layout
- Handle the most complex designs meaning support for virtual any application
- Low learning curve in combination with Altium 365 make for high individual or team productivity out of the box



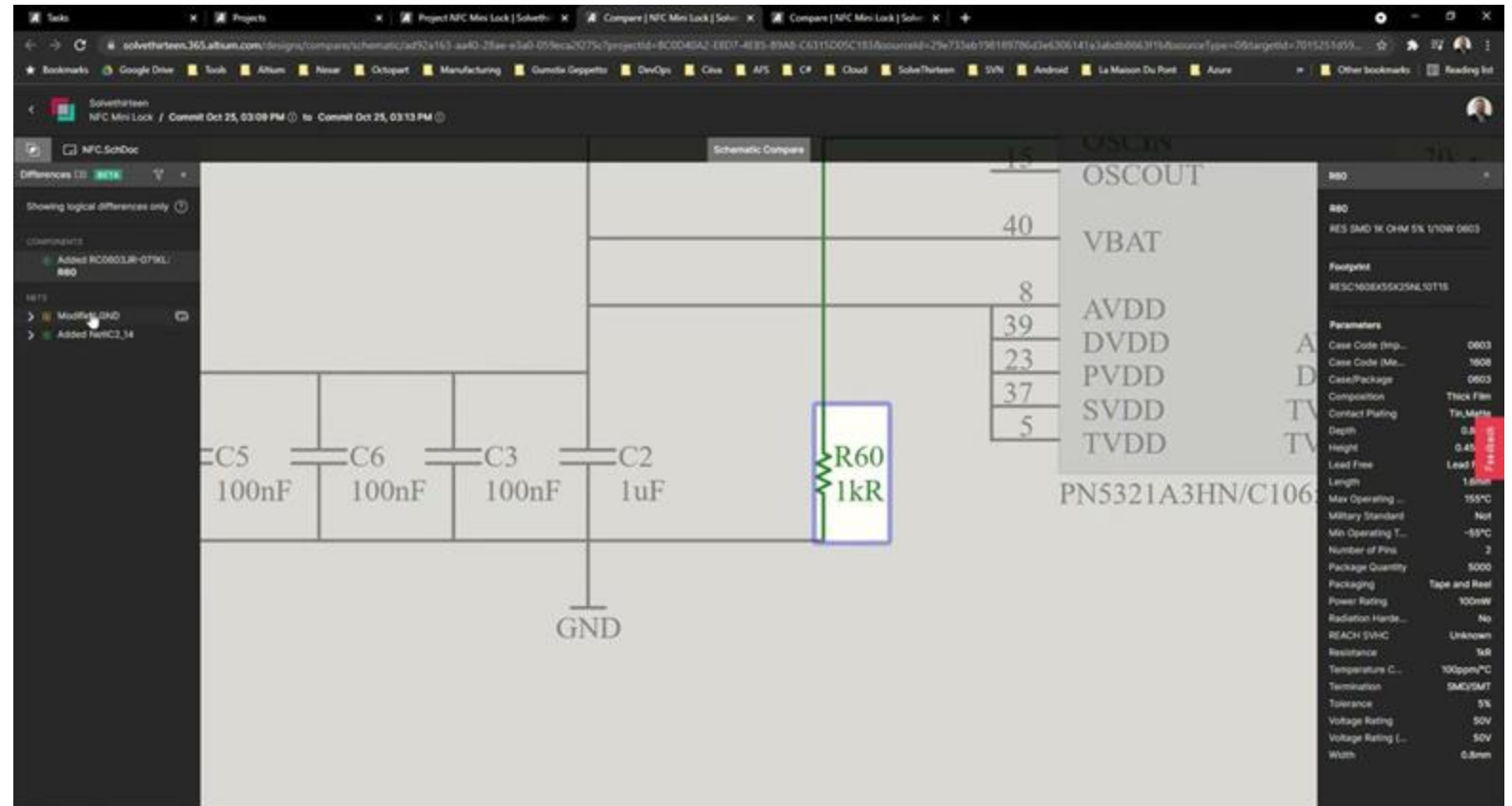


# Digitizing Collaborative Working



A complete digital record of what happened, when it happened, and why, means full visibility and traceability throughout the design process for better business outcomes

- Reduce design iterations and get to market faster through increased transparency and visibility
- Help ensure compliance and quality assurance
- Better control design changes throughout the lifecycle of the design
- CAD native visualization and interaction in browser



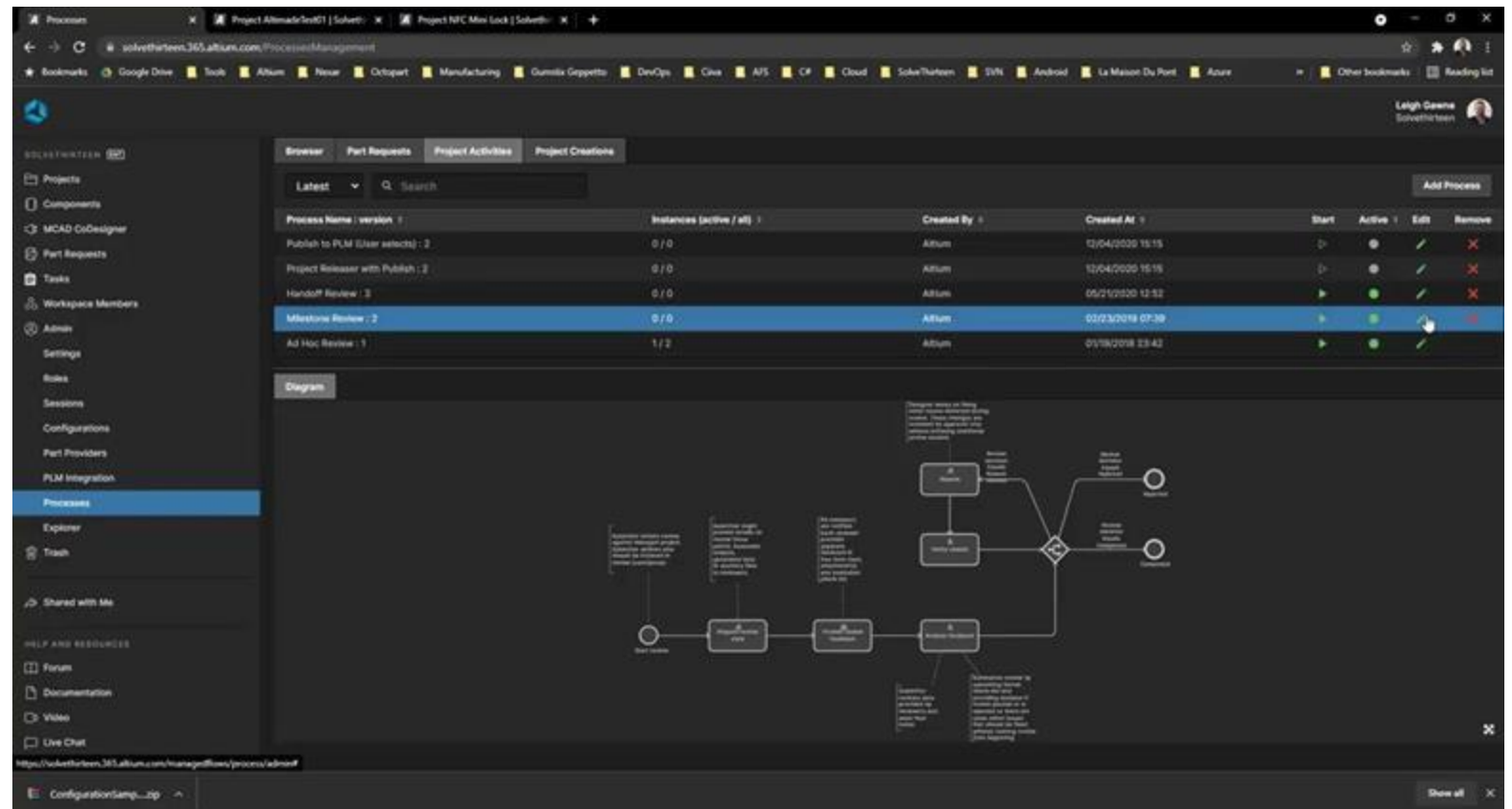


# Business Process Modeling

Altium

Processes that are bespoke to your business, without customized software, enable tailor made solutions that focus on solving your problems in the most effective way possible

- Structure and process for many organizations is key to operational control
- Customizable workflows for mode
- Better control design changes throughout the lifecycle of the design
- CAD native visualization and interaction in browser

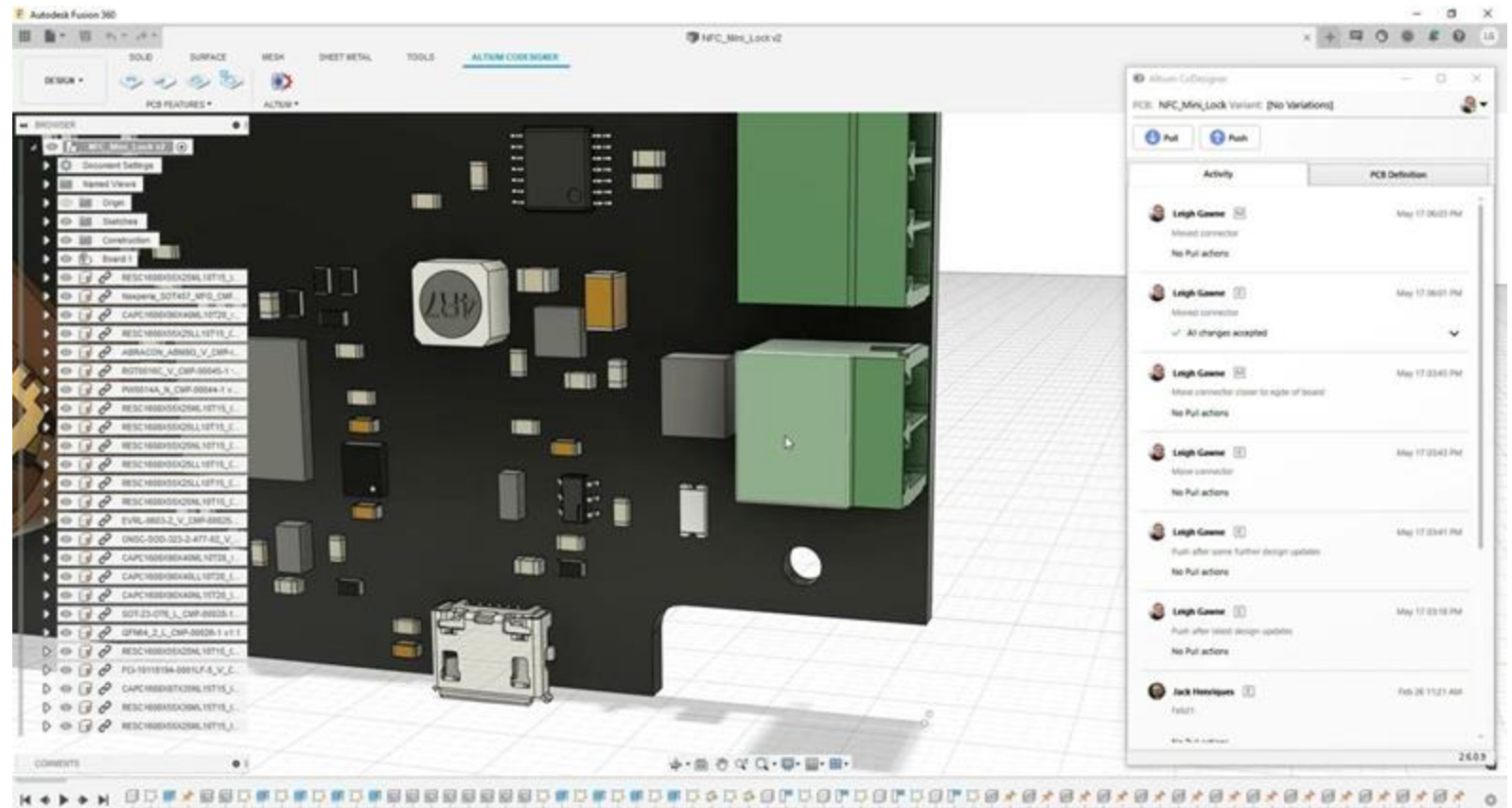


# Electronic and Mechanical Co-Design



Co-Designer provides a digital bridge between the electronic and mechanical domains with native integrations that create a seamless, fileless collaboration experience

- Native integrations with Fusion 360, Inventor, Creo and SOLIDWORKS
- Collaborators stay working within their own environments
- Low to no learning curve making adoption easy
- Easy to keep mechanical and electronic design elements synchronized



# Electronics Supply Chain



Digital integrations with Octopart provide insights and intelligence to enable better component selection decisions and reduce availability risks.

- BOM and component library level insights and analytics
- Create and manage effective multi-sourcing strategies
- Real time supply availability information for leading electronics distributors
- Simple cost roll up for procurement scenario exploration and analysis

The screenshot displays the Bill of Materials (BOM) table within the Altium Designer software. The table lists various electronic components, their descriptions, designators, part numbers, prices, and quantities. The components are organized into a hierarchical structure on the left, with the main table showing details for each item.

NAME	DESCRIPTION	DESIGNATOR	PART NUMBER	PRICE	QTY
DRV104PWPR	TEXAS INSTRUMENTS - DRV104PWPR - PWM DRIVER, 2 CHANNEL, 2A, HTSSOP-14	IC1, IC4, IC5, IC6	Texas Instruments DRV104PWPR	\$1329.77	4
CC0603KRX7R9B0103	Cap Ceramic 0.01uF 50V X7R 10% SMD 0603 125C Automotive T/R	C18, C35	Yageo CC0603KRX7R9B0103	\$3.26	2
1P-217WBC-AL1M2VY13T	LED RED CLEAR 21SMD	D01, D02	Everlight 1P-217WBC-AL1M2VY13T	\$15.02	2
10118184-0001LF	CONN RCPT USB2.0 MICRO B SMD R/A	J1	Amphenol ICC / FCI 10118184-000	\$31.58	1
RC0603FR-07100KL	RES SMD 100K OHM 1% 1/10W 0603	R10, R18, R19, R20, R58	Yageo RC0603FR-07100KL	\$4.36	1
RC0603FR-0733KL	RES SMD 33K OHM 1% 1/10W 0603	R21	Yageo RC0603FR-0733KL	\$0.97	1
FT4232HQ-REEL	IC USB HS QUAD UART/SYNC 64-QFN	U1	FTDI FT4232HQ-REEL	\$567	1
93LC56BT-VOT	MICROCHIP - 93LC56BT-VOT - SERIAL EEPROM, 2KBIT, 2MHZ, SOT-23-6	U2	Microchip 93LC56BT-VOT	\$27	1
RC0603JR-072K2L	RES SMD 2.2K OHM 5% 1/10W 0603	R29, R36, R38, R51, R52, R53, R54	Yageo RC0603JR-072K2L	\$3.6	7
RC0603FR-0712KL	RES SMD 12K OHM 1% 1/10W 0603	R30	Yageo RC0603FR-0712KL	\$0.97	1
RC0603JR-070RL	RES SMD 0 OHM JUMPER 1/10W 0603	R7, R8, R9, R12, R31, R36	Yageo RC0603JR-070RL	\$2.54	6
RC0603JR-074K7L	RES SMD 4.7K OHM 5% 1/10W 0603	R37, R46, R49	Yageo RC0603JR-074K7L	\$2.4	3
RC0603FR-0733RL	RES SMD 33 OHM 1% 1/10W 0603	R32, R33, R34, R45, R47, R48, R50	Yageo RC0603FR-0733RL	\$4.36	7
C0603C47K5RAC7U	CAP CER 470PF 50V X7R 0603	C14, C16, C17	KEMET C0603C47K5RAC7U	\$9.06	4
CC0603KRX7R9B0475	CAP CER 4.7UF 10V X5R 0603	C20	Yageo CC0603KRX7R9B0475	\$6.5	1
CC0603JRNPO68H220	YAGEO - CC0603JRNPO68H220 - Multilayer Ceramic Capacitor, CC Series, 22 pF, -1	C23	Yageo CC0603JRNPO68H220	\$1.4	1
CC0603JRNPO68H100	CAP CER 10PF 50V COG/NPO 0603	C24, C25	Yageo CC0603JRNPO68H100	\$3.62	2
GRM216R80J226ME3RL	CAP CER 22UF 6.3V X5R 0805	C27	Murata GRM216R80J226ME3RL	\$7.4	1
12063D100KAT2A	CAP CER 10UF 25V X5R 1206	C28	Kyocera AVX 12063D100KAT2A	\$27.36	1
C0603C333J5GACTU	KEMET 3.3nF Multilayer Ceramic Capacitor (MLCC) 50 V 5% COG dielectric C SMD m	C30	KEMET C0603C333J5GACTU	\$14.01	1
BAT54HT10	DIODE SCHOTTKY 30V 200MA SOD323	D1, D2	ON Semiconductor / Fairchild BAT54	\$23.92	2
M8RS3200T30	DIODE SCHOTTKY 200V 3A SMB	D3	ON Semiconductor M8RS3200T30	\$45.62	1
MF-NSMF150-2	PTC RESET FUSE 6V 1.5A 1206	F1	Bourns MF-NSMF150-2	\$25.65	1
VLCP9020T1-2R02R6-3	FIXED IND 2.2uH 2.62A 43 MOHM	L3	TDK VLCP9020T1-2R02R6-3	\$60.5	1
6P132210002	TERM BLOCK HDR 2POS 90DEG 3.5MM	P4	Wurth Electronics 6P132210002	\$29.6	1
NTR4179PT10	MOSFET P-CH 30V 2.2A SOT23	Q1	ON Semiconductor NTR4179PT10	\$26.05	1
BCM85705J15	TRANS 2PNP 45V 0.1A 6TSOP	Q2	Neupha BCM85705J15	\$22.84	1
RC0603JR-071ML	RES SMD 1M OHM 5% 1/10W 0603	R40	Yageo RC0603JR-071ML	\$0.8	1

Total: 54 lines, 122 components Price: \$8839.31

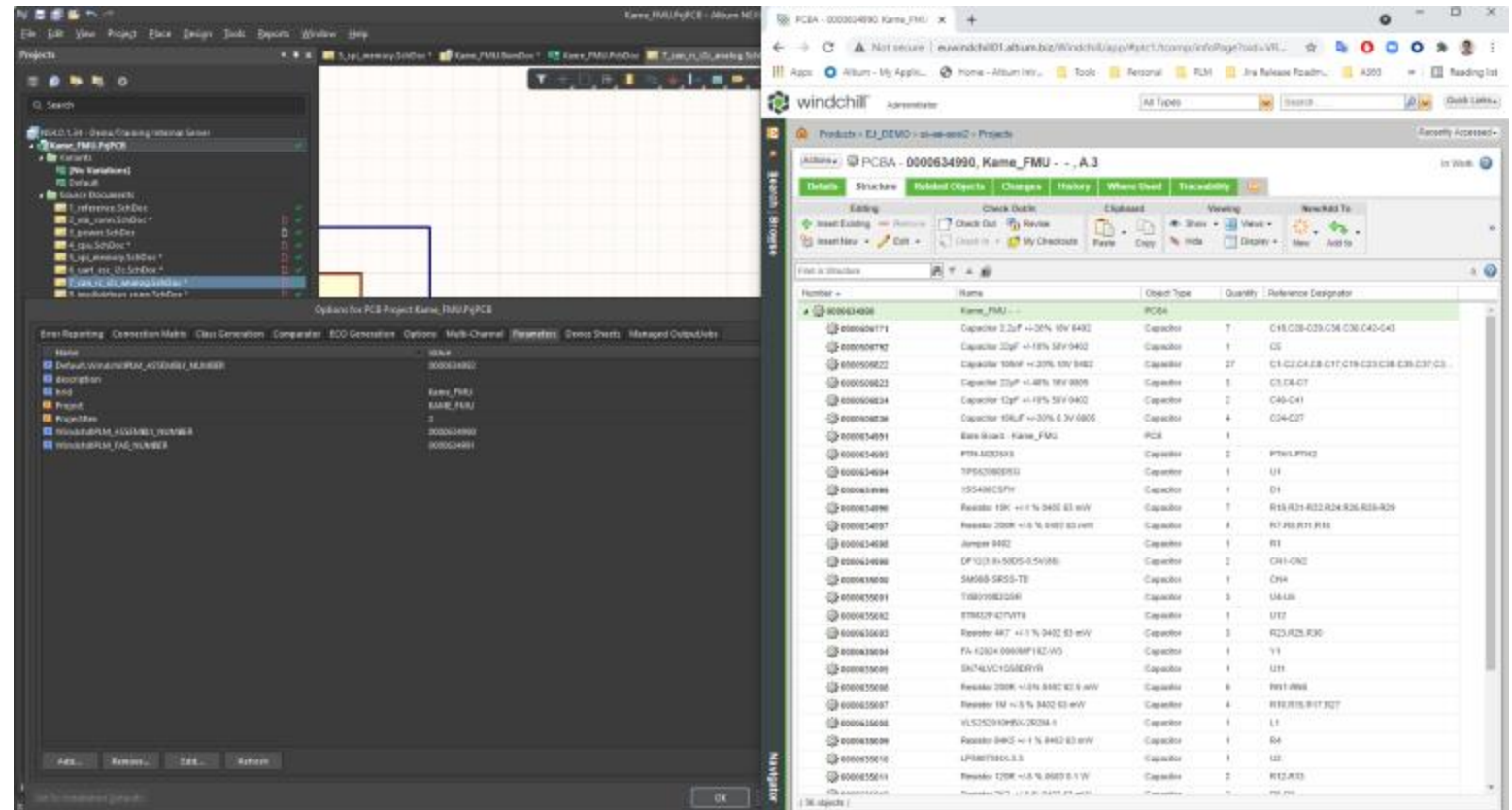


# Product Lifecycle Management (PLM)



PLM systems are part of the fabric of many customers business systems and toolchains. Digital bridges to many of the leading PLM vendors provide low cost, high capability integrations.

- Native integrations with PTC Windchill®, Arena® PLM, Oracle® Agile™ PLM and Siemens Teamcenter®
- Configure to work with your existing business processes
- Fundamental to achieving high levels of compliance, quality, repeatability and predictability

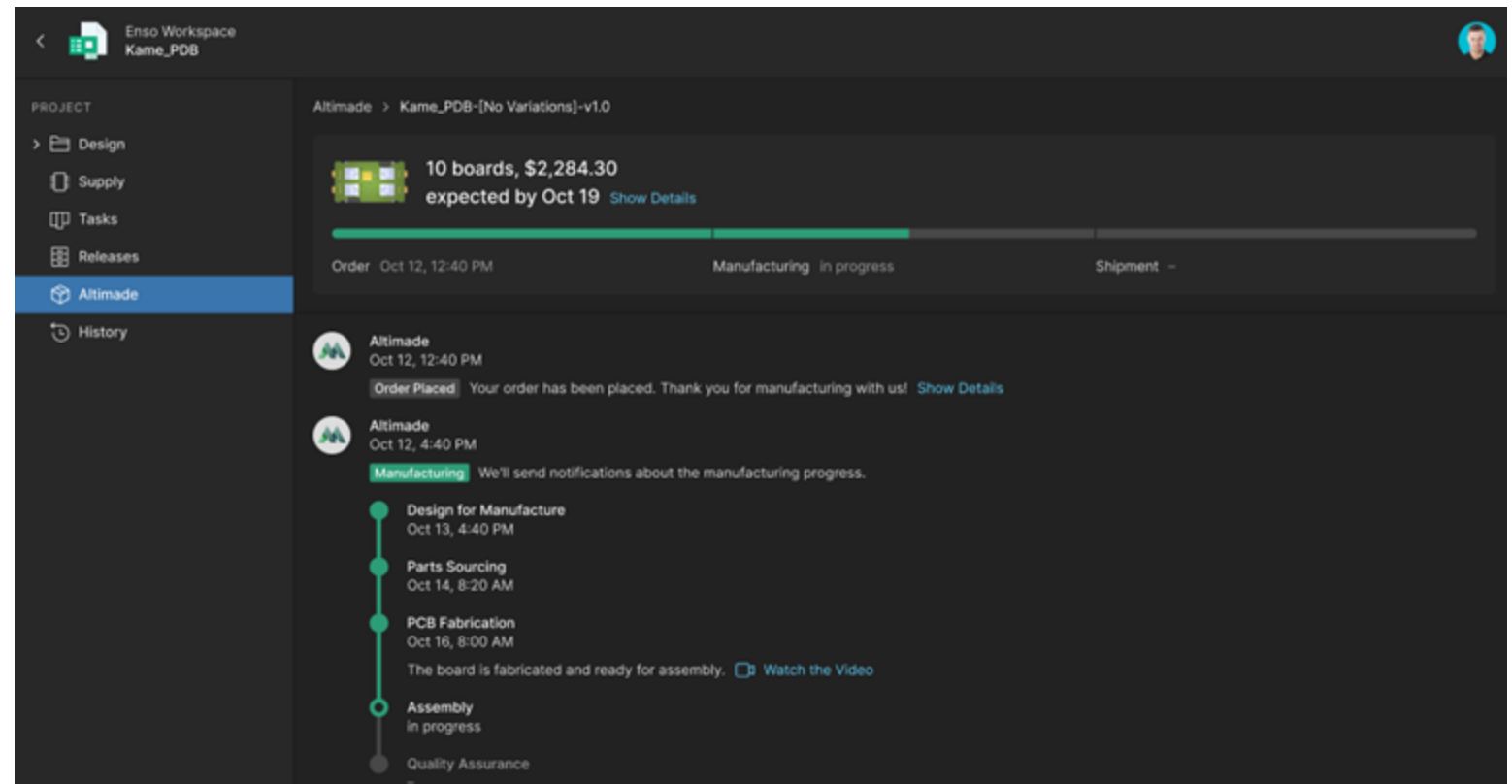






Altitude will deliver a differentiated experience for developing electronics, through a digital first, deterministic, high certainty of outcome Manufacturing as a Service offering

- Altitude will launch in the first quarter of 2022 and will bring the business of manufacturing to Altium 365
- Model based approach will ensure high reliability, low touch manufacturing experience for designer and manufacturer
- Nexar API integration makes it simple and scalable



**Thank You**